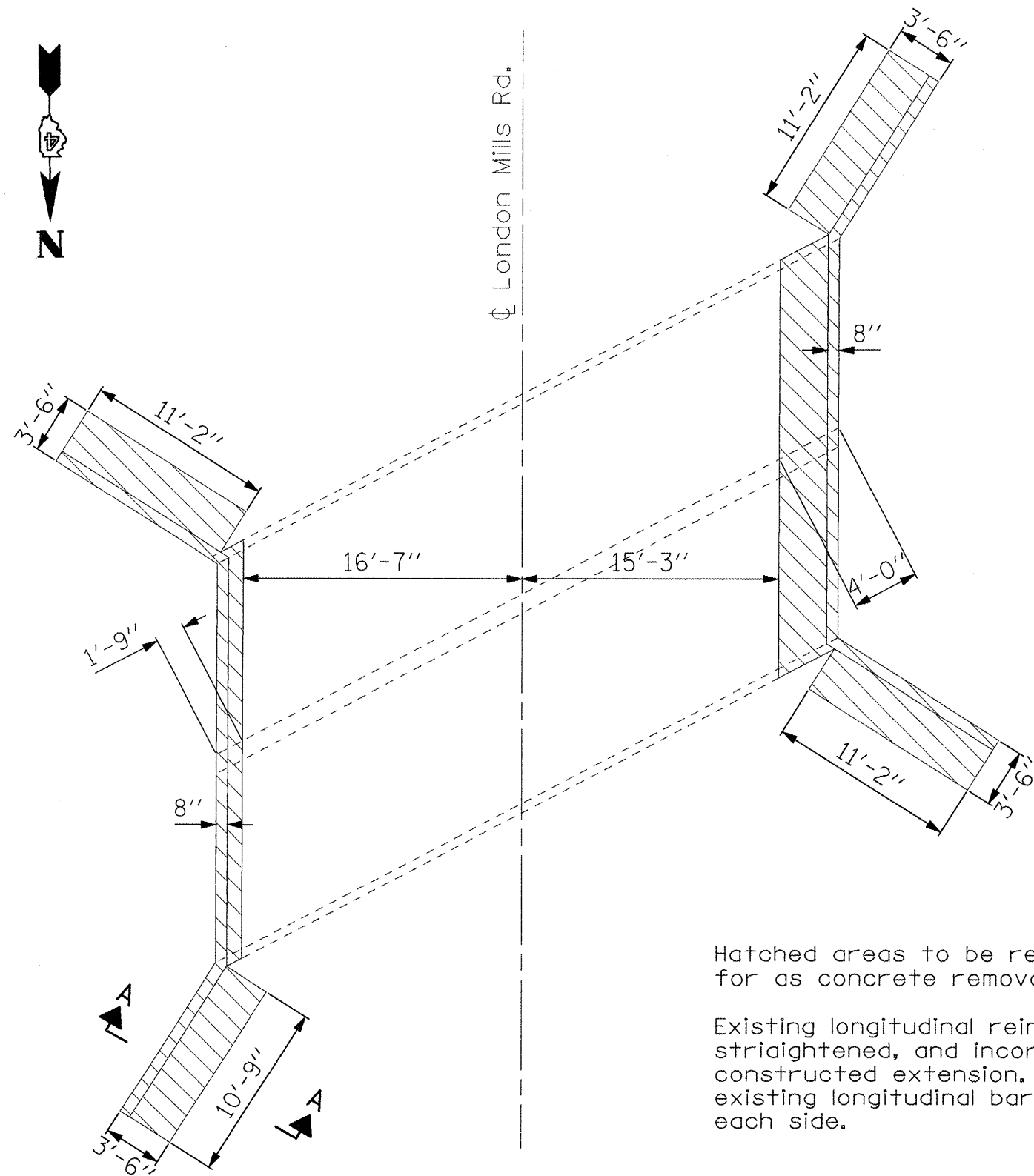


ROUTE	SECTION	COUNTY	TOTAL SHEETS	SHEET NO.
F.A.P. 665	*	FULTON	76	45
MKD. IL 116				

\* 142 RS-6; 143[RS-4, (C-3)BR]; 142X(C-1)I

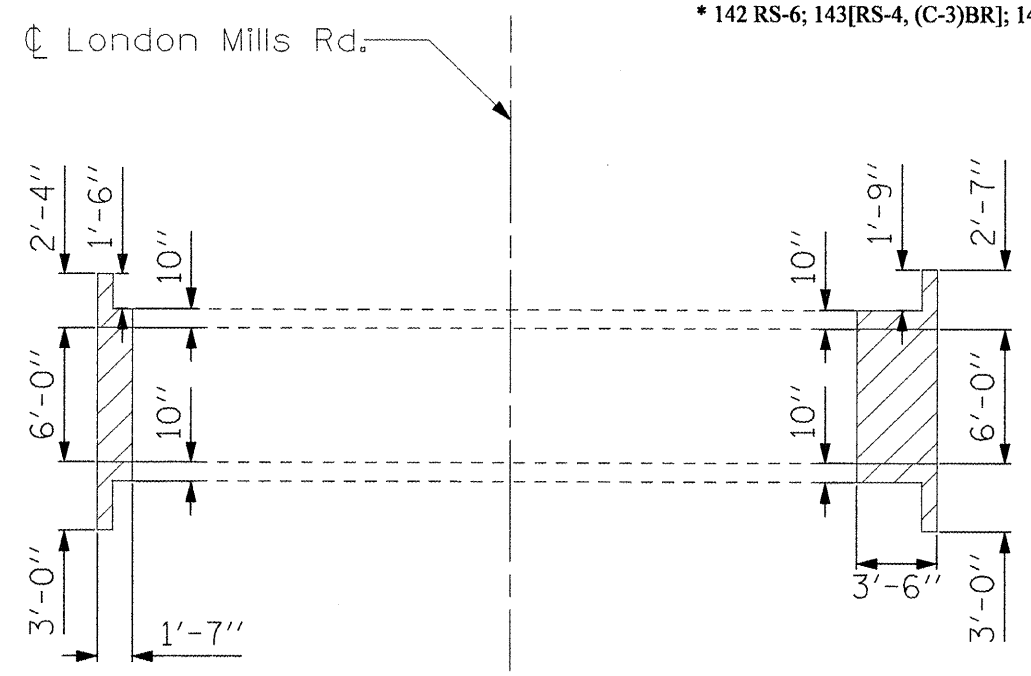


**PLAN VIEW**

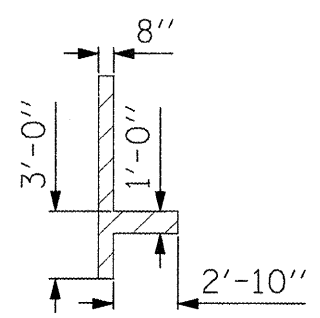
CH 2 (LONDON MILLS RD)  
STA. 23+70.39

Hatched areas to be removed, which shall be paid for as concrete removal

Existing longitudinal reinforcement to be cleaned, straightened, and incorporated into the newly constructed extension. A length of 1'-4" of the existing longitudinal bars should be maintained on each side.



**ELEVATION**



**SECTION A-A**

REVISIONS		ILLINOIS DEPARTMENT OF TRANSPORTATION
NAME	DATE	
		<b>CULVERT REMOVAL DETAIL</b>

SCALE: NOT TO SCALE  
DATE 4/17/08

DRAWN BY DHS  
CHECKED BY