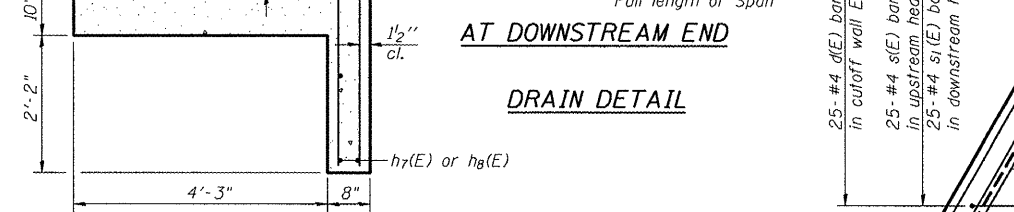
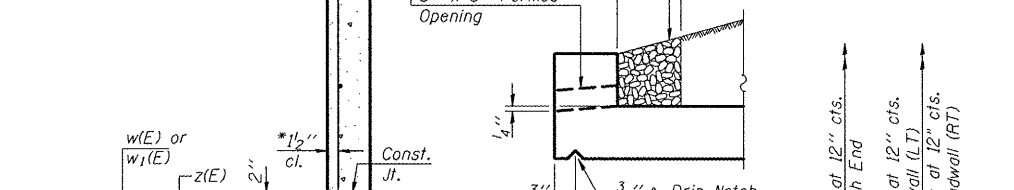
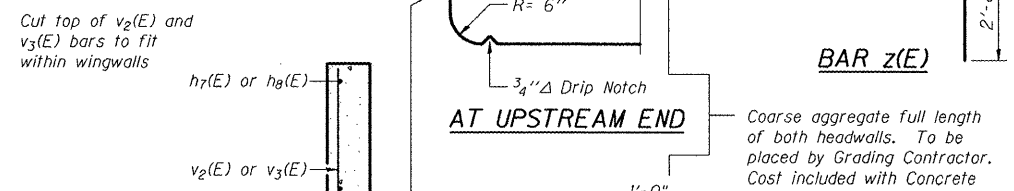
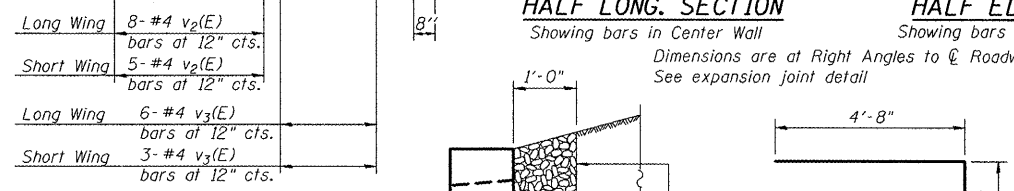
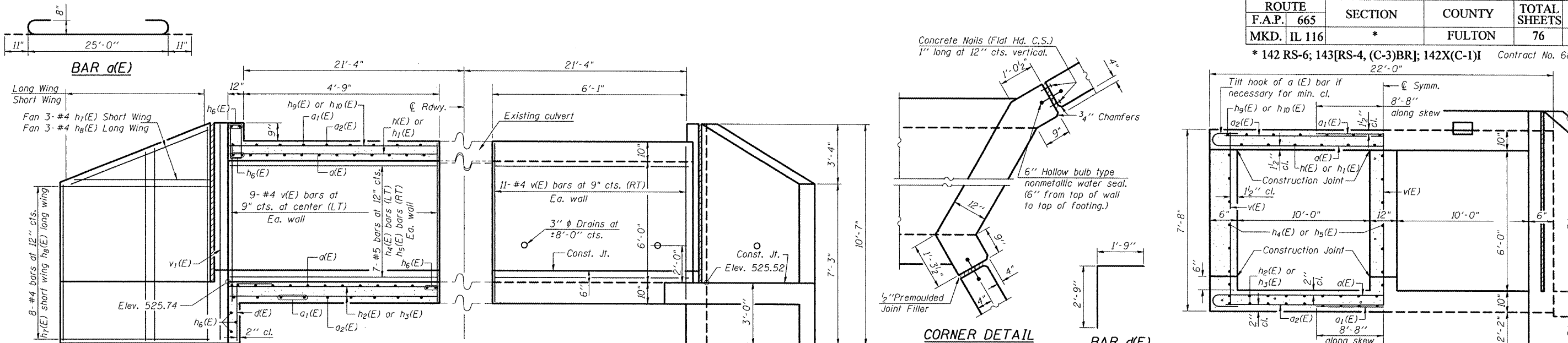
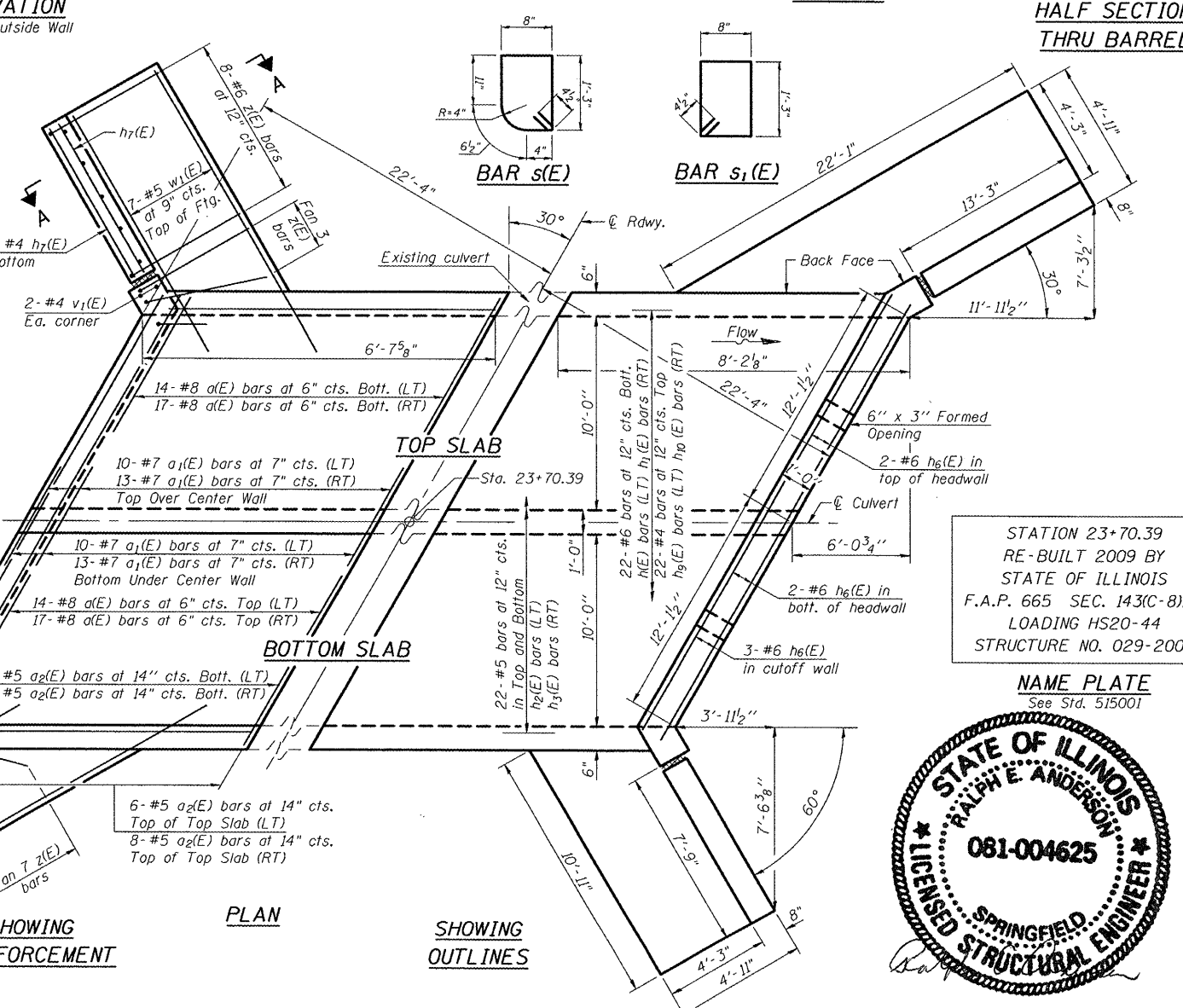


| | | | | |
|-------------|---------|--------|--------------|-----------|
| ROUTE | SECTION | COUNTY | TOTAL SHEETS | SHEET NO. |
| F.A.P. 665 | * | FULTON | 76 | 48 |
| MKD. IL 116 | | | | |

* 142 RS-6; 143[RS-4, (C-3)BR]; 142X(C-1)I Contract No. 68353



Notes: Reinforcement bars shall conform to the requirements of ASTM A 706 Gr 60. See Special Provisions. Plan dimensions and details relative to existing plans are subject to nominal construction variations. The Contractor shall field verify existing dimensions and details affecting new construction and make necessary approved adjustments prior to construction or ordering of materials. Such variations shall not be cause for additional compensation for a change in scope of the work, however, the Contractor will be paid for the quantity actually furnished at the unit price bid for the work.



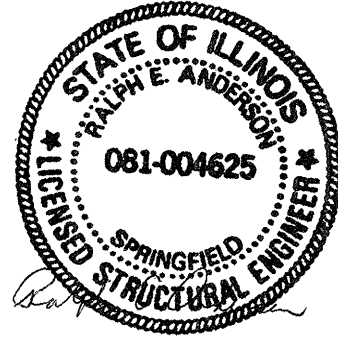
BILL OF MATERIAL

| Bar | No. | Size | Length | Shape |
|----------------------------------|---------|------|---------|-------|
| a(E) | 62 | #8 | 26'-10" | U |
| a1(E) | 46 | #7 | 17'-4" | — |
| a2(E) | 28 | #5 | 14'-6" | — |
| d(E) | 50 | #4 | 4'-6" | — |
| h(E) | 22 | #6 | 6'-4" | — |
| h1(E) | 22 | #6 | 7'-8" | — |
| h2(E) | 44 | #5 | 6'-4" | — |
| h3(E) | 44 | #5 | 7'-8" | — |
| h4(E) | 21 | #5 | 6'-4" | — |
| h5(E) | 21 | #5 | 7'-8" | — |
| h6(E) | 14 | #6 | 24'-6" | — |
| h7(E) | 24 | #4 | 7'-5" | — |
| h8(E) | 24 | #4 | 12'-11" | — |
| h9(E) | 22 | #4 | 6'-4" | — |
| h10(E) | 22 | #4 | 7'-8" | — |
| s(E) | 25 | #4 | 4'-6" | □ |
| s1(E) | 25 | #4 | 4'-7" | □ |
| v(E) | 60 | #4 | 7'-4" | — |
| v1(E) | 8 | #4 | 10'-0" | — |
| v2(E) | 26 | #4 | 8'-6" | — |
| v3(E) | 18 | #4 | 10'-0" | — |
| w(E) | 14 | #5 | 22'-6" | — |
| w1(E) | 14 | #5 | 11'-6" | — |
| z(E) | 64 | #6 | 7'-4" | — |
| Expansion Bolts 3/4" | Each | | 98 | |
| Concrete Box Culverts | Cu. Yd. | | 46 | |
| Reinforcement Bars, Epoxy Coated | Pound | | 11070 | |

Reinforcement bars designated (E) shall be epoxy coated.

STATION 23+70.39
RE-BUILT 2009 BY
STATE OF ILLINOIS
F.A.P. 665 SEC. 143(C-8)BR
LOADING HS20-44
STRUCTURE NO. 029-2000

NAME PLATE
See Std. 515001



ILLINOIS DEPARTMENT OF TRANSPORTATION
CULVERT DETAIL
CH 2 (London Mills Rd.)
Sta. 23+70.39
S.N. 029-2000

SCALE: NOT TO SCALE
DATE 1/25/2008
DRAWN BY DHS
CHECKED BY