

F.A.P. RTE.	SECTION	COUNTY	TOTAL SHEETS	SHEET NO.
824	16-2,19X-2)RS-1,19B,19BR	Coles	49	1
FED. ROAD DIST. NO.	ILLINOIS	CONTRACT NO. 74157		

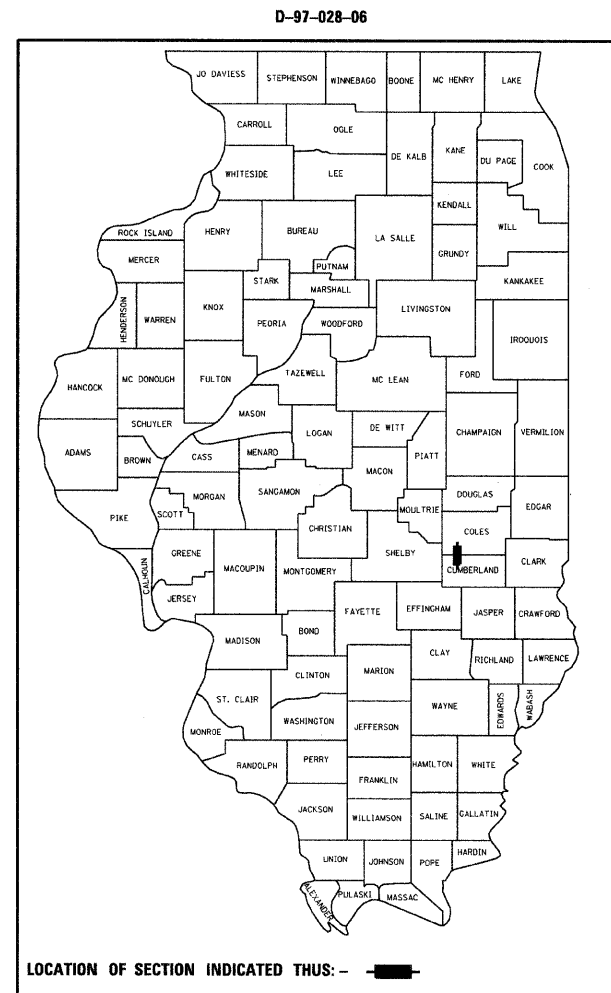
STATE OF ILLINOIS
DEPARTMENT OF TRANSPORTATION
DIVISION OF HIGHWAYS

**PROPOSED
HIGHWAY PLANS**

FAP ROUTE 824 (US 45)
SECTION (16-2,19X-2)RS-1,19B,19BR
PROJECT: F-0824(018)
HMA RESURFACING/BOX CULVERT REPLACEMENT
COLES COUNTY

FOR INDEX OF SHEETS, SEE SHEET NO. 2

2007 ADT = 10,000



C-97-059-06

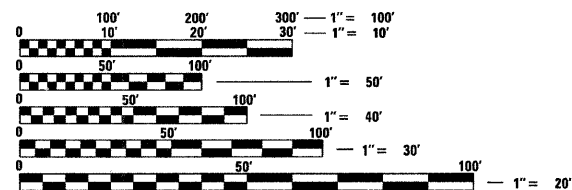


STA 1418+47
NORTH END OF PROJECT

STATION EQUATION
STA 21+50 BK =
STA 1292+98 AH

STATION EQUATION
STA 1242+28.9 BK =
STA 72+19.1 AH

STA 1205+50
SOUTH END OF PROJECT



FULL SIZE PLANS HAVE BEEN PREPARED USING STANDARD ENGINEERING SCALES. REDUCED SIZED PLANS WILL NOT CONFORM TO STANDARD SCALES. IN MAKING MEASUREMENTS ON REDUCED PLANS, THE ABOVE SCALES MAY BE USED.

J.U.L.I.E.
JOINT UTILITY LOCATION INFORMATION FOR EXCAVATION
1-800-892-0123
OR 811

PROJECT ENGINEER: MARK DAUGHERTY
PROJECT MANAGER: JOYCE HEMMEN

CONTRACT NO. 74157

TOTAL LENGTH OF PROJECT = 21,297 FT 4.03 MILES



STATE OF ILLINOIS
DEPARTMENT OF TRANSPORTATION
DIVISION OF HIGHWAYS

SUBMITTED February 9, 2009

Regan L. Siskell
DEPUTY DIRECTOR OF HIGHWAYS, REGION ENGINEER

March 27, 2009
Charles G. Ingersoll
ENGINEER OF DESIGN AND ENVIRONMENT

March 27, 2009
Christine M. Reed
DIRECTOR OF HIGHWAYS, CHIEF ENGINEER

**PRINTED BY THE AUTHORITY
OF THE STATE OF ILLINOIS**