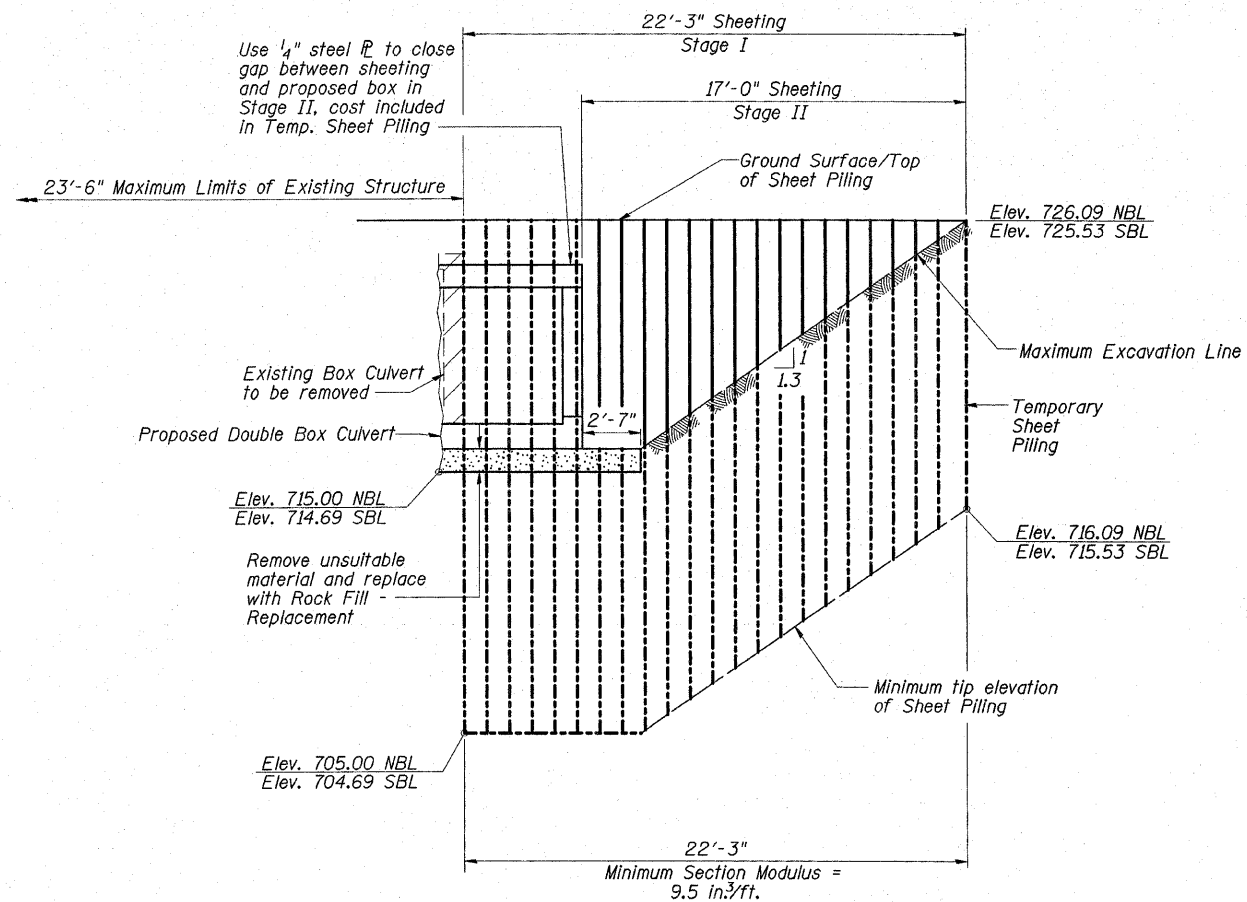


STATE OF ILLINOIS  
DEPARTMENT OF TRANSPORTATION

ROUTE NO.	SECTION	COUNTY	SHEETS	SHEET	SHEET NO.
FAP 824	*	COLES	49	35	9 SHEETS
FED. ROAD DIST. NO.	ILLINOIS	FED. AID PROJECT			
		*16-2, 19X-2/RS-1, 19B, 19BR	Contract #74157		

**TEMPORARY SHEET PILING NOTES**

- If the Contractor chooses to alter the temporary cantilevered sheet piling design requirements shown on the plans, a design submittal including plan details and calculations will be required for review and acceptance by the Engineer.



**TEMPORARY SHEET PILING**

(To be constructed parallel to centerline of lanes on each side)

**STAGE CONSTRUCTION DETAILS**  
**US 45 OVER KICKAPOO CREEK**  
**FAP ROUTE 824**  
**SECTION (16-2, 19X-2)RS-1, 19B, 19BR**  
**COLES COUNTY**  
**STATION 1381+22.50**  
**STRUCTURE NO. 015-2023**

**ESCA**  
CONSULTANTS, INC.

DESIGNED BY:	DAJ	07/08
DRAWN BY:	HAS	07/08
CHECKED BY:	ELH	09/08
APPROVED BY:	RDP	09/08