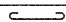
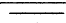
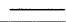
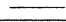
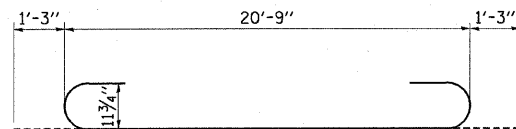


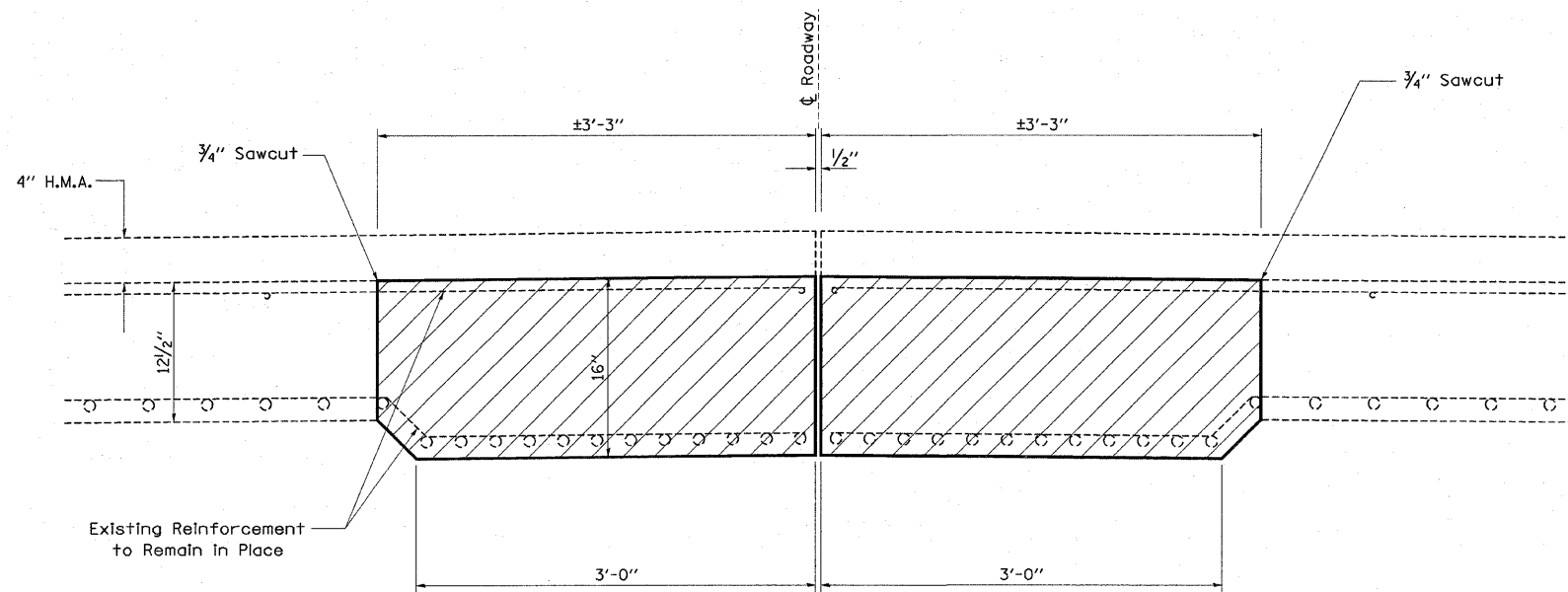
BILL OF MATERIAL

BAR	TOTAL	SIZE	LENGTH	SHAPE
a(E)	14	#9	23'-4"	
a1(E)	4	#5	20'-9"	
b(E)	27	#6	6'-3"	
b1(E)	20	#4	5'-0"	
CONCRETE REMOVAL			CU. YD.	6.9
REINFORCEMENT BARS (EPOXY COATED)			POUND	1520
CONCRETE SUPERSTR.			CU. YD.	6.9

REINFORCEMENT BARS DESIGNATED (E) SHALL BE EPOXY COATED

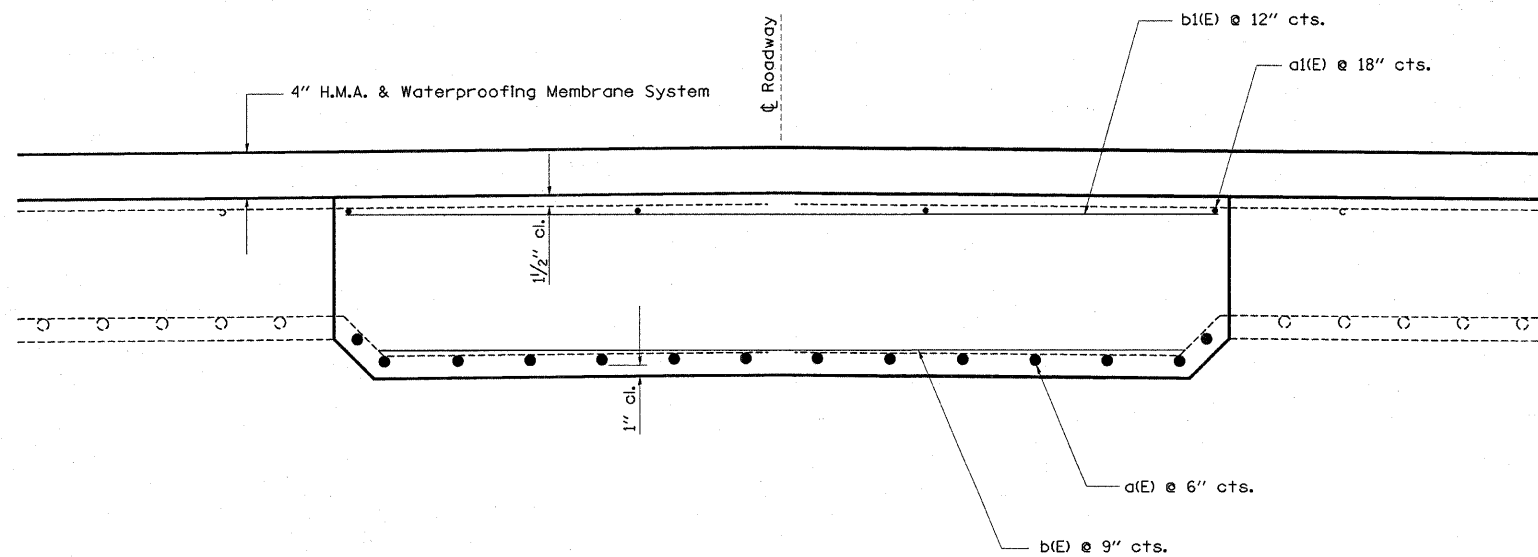


Bar a(E)



SECTION A-A
(Dimensions at RT L's to end of deck)

- Existing Reinforcement
- Proposed Reinforcement



SECTION B-B
(Dimensions at RT L's to end of deck)

SHEET NO. 4
6 SHEETS

FILE NAME =	USER NAME = staffennk	DESIGNED -	REVISED -	STATE OF ILLINOIS DEPARTMENT OF TRANSPORTATION	LONGITUDINAL JOINT REPAIR DETAILS SN. 015-0025	F.A.P. RTE.	SECTION	COUNTY	TOTAL SHEETS	SHEET NO.	
c:\pwwork\pwwid01\STEFFENK\0126049\p	anpropbr_74157.dgn	DRAWN -	REVISED -			824	(16-2,19X-2)RS-1, 19B,19BR	COLES/CUMB	49	43	
	PLOT SCALE = 20.0000 ' / IN.	CHECKED -	REVISED -			CONTRACT NO. 74157					
	PLOT DATE = 2/9/2009	DATE -	REVISED -			FED. ROAD DIST. NO. ILLINOIS FED. AID PROJECT					