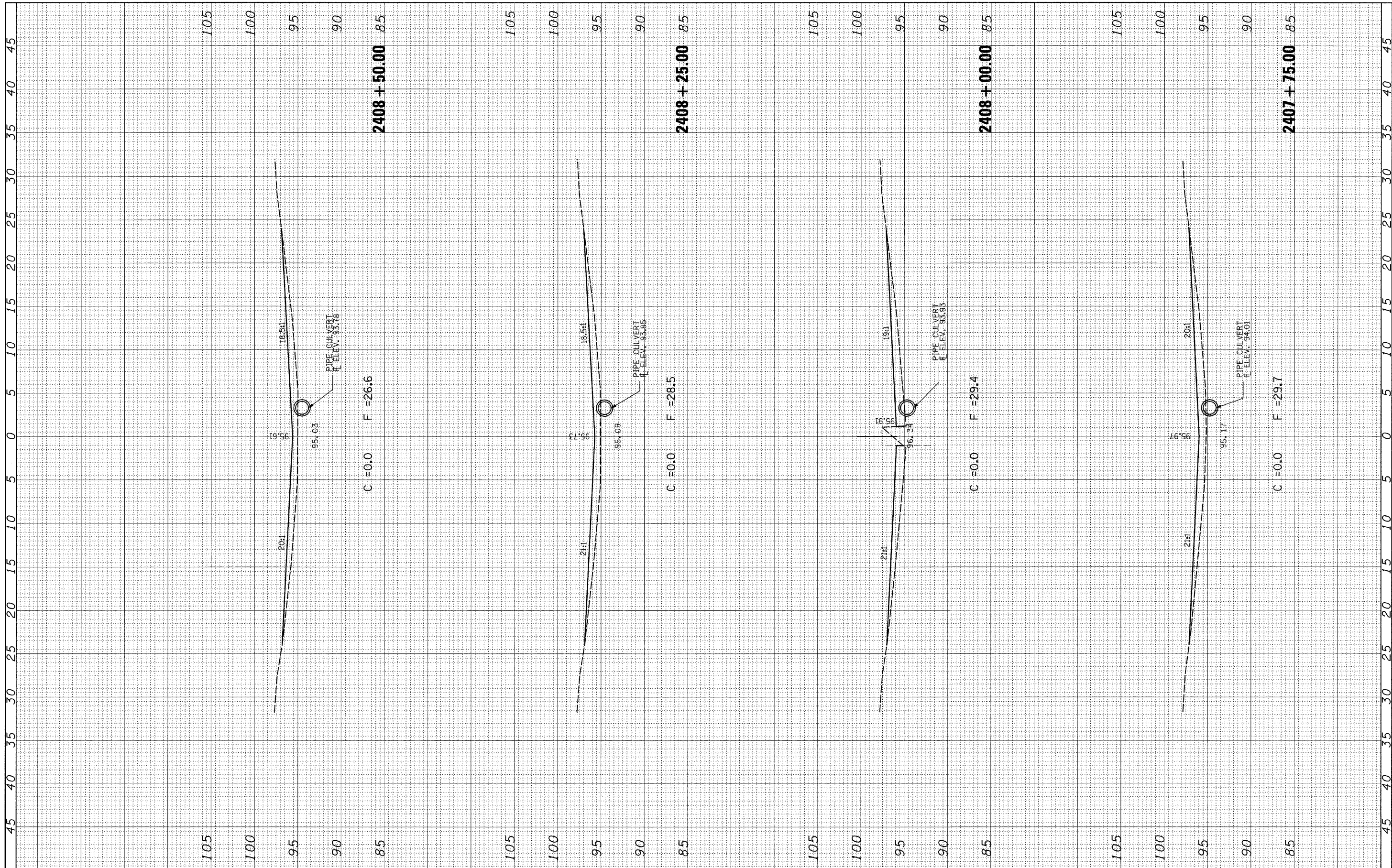


FINAL SURVEYED BY DATE
 SURVEY NO. DATE
 NOTE BOOK NO. DATE
 AREAS CHECKED

ORIGINAL SURVEYED BY DATE
 SURVEY NO. DATE
 NOTE BOOK NO. DATE
 AREAS CHECKED



FILE NAME = c:\pwork\pwork\hemmenje\dms54659\d774314-1\1-29-2009\1-29-2009-1-29-2009.dgn
 USER NAME = hemmenje
 DESIGNED -
 DRAWN -
 CHECKED -
 DATE -

REVISIONS
 REVISION NO. DATE DESCRIPTION
 1 1/29/2009
 2 1/29/2009
 3 1/29/2009

STATE OF ILLINOIS
 DEPARTMENT OF TRANSPORTATION

LOCATION 7
 CROSS-SECTIONS - SN 025-0062
 SCALE: 1" = 5'
 SHEET NO. 7 OF 9 SHEETS
 STA. 2407+75.00 TO STA. 2408+50.00

F.A.I. RTE. TO	SECTION	COUNTY	TOTAL SHEETS	SHEET NO.
	D-7 SAFETY 2009-1	EFFINGHAM	85	61
CONTRACT NO. 74314			ILLINOIS FED. AID PROJECT	