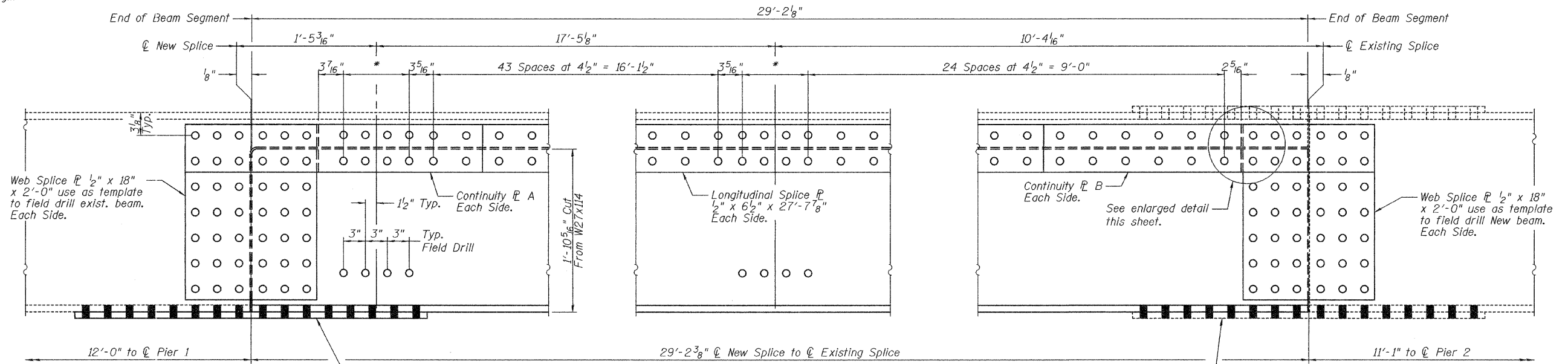
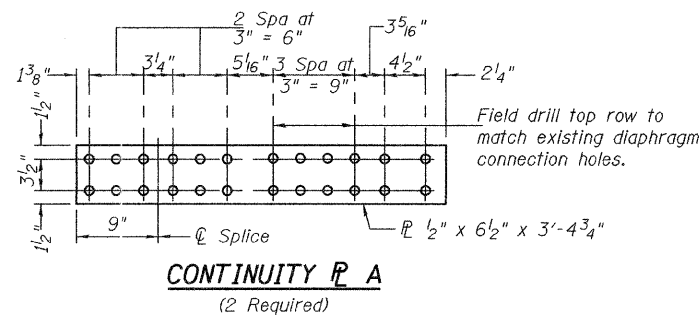


STATE OF ILLINOIS  
DEPARTMENT OF TRANSPORTATION

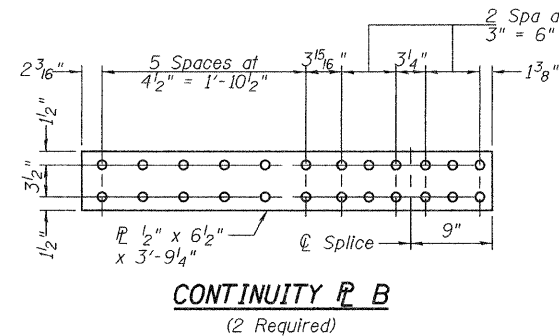
\*3 Spaces at 3" = 9"  
Field drill top row to  
match exist. diaphragm  
connection holes.



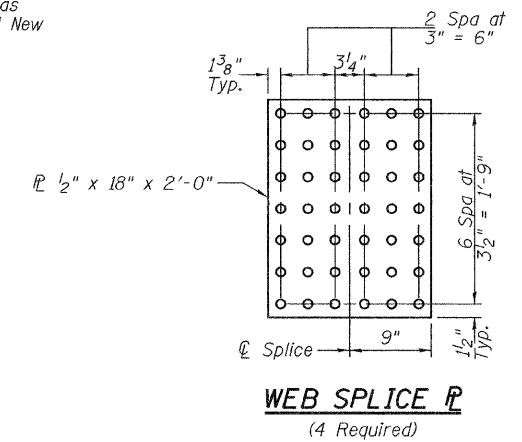
**ELEVATION BEAM 1**  
(Looking South)



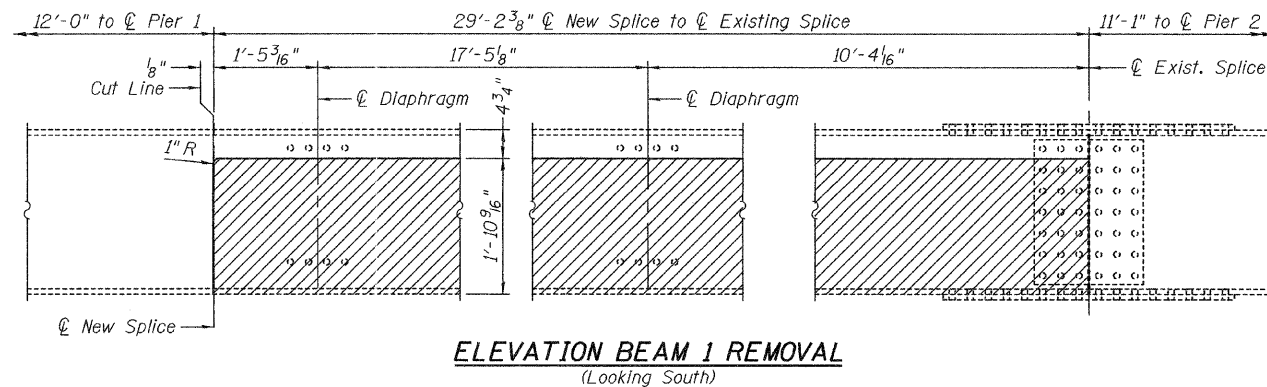
**CONTINUITY PL A**  
(2 Required)



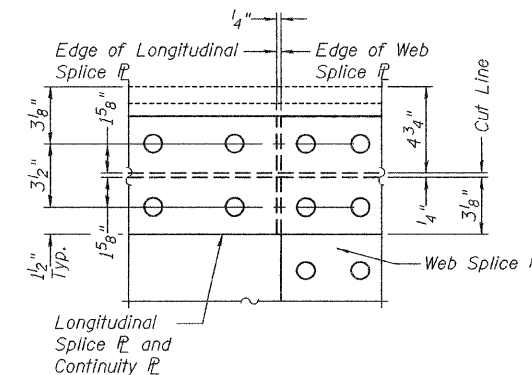
**CONTINUITY PL B**  
(2 Required)



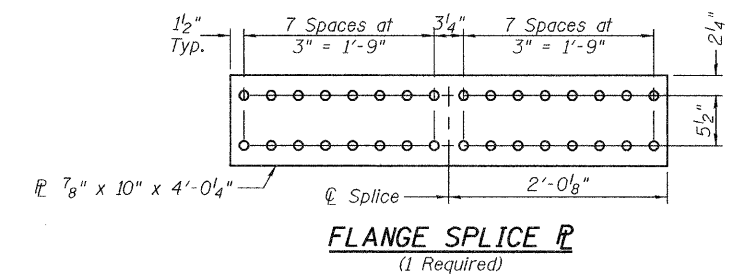
**WEB SPLICE PL**  
(4 Required)



**ELEVATION BEAM 1 REMOVAL**  
(Looking South)



**ENLARGED DETAIL**  
(Opp End Similar)



**FLANGE SPLICE PL**  
(1 Required)

DESIGNED	V.H.V.
CHECKED	A.T.H.
DRAWN	Drew Christopher
CHECKED	V.H.V. A.T.H.

EXAMINED	April 10, 2009
PASSED	Carl P. [Signature] ENGINEER OF STRUCTURAL SERVICES
	Ralph E. [Signature] ENGINEER OF BRIDGES AND STRUCTURES

**BEAM 1 DETAILS**  
SN 060-0139

SHEET NO. 4 5 SHEETS	F.A.I. RTE. 70	SECTION 60-10HB-4R	COUNTY Madison	TOTAL SHEETS 420	SHEET NO. 207D
	FED. ROAD DIST. NO. ILLINOIS FED. AID PROJECT			CONTRACT NO. 76709	