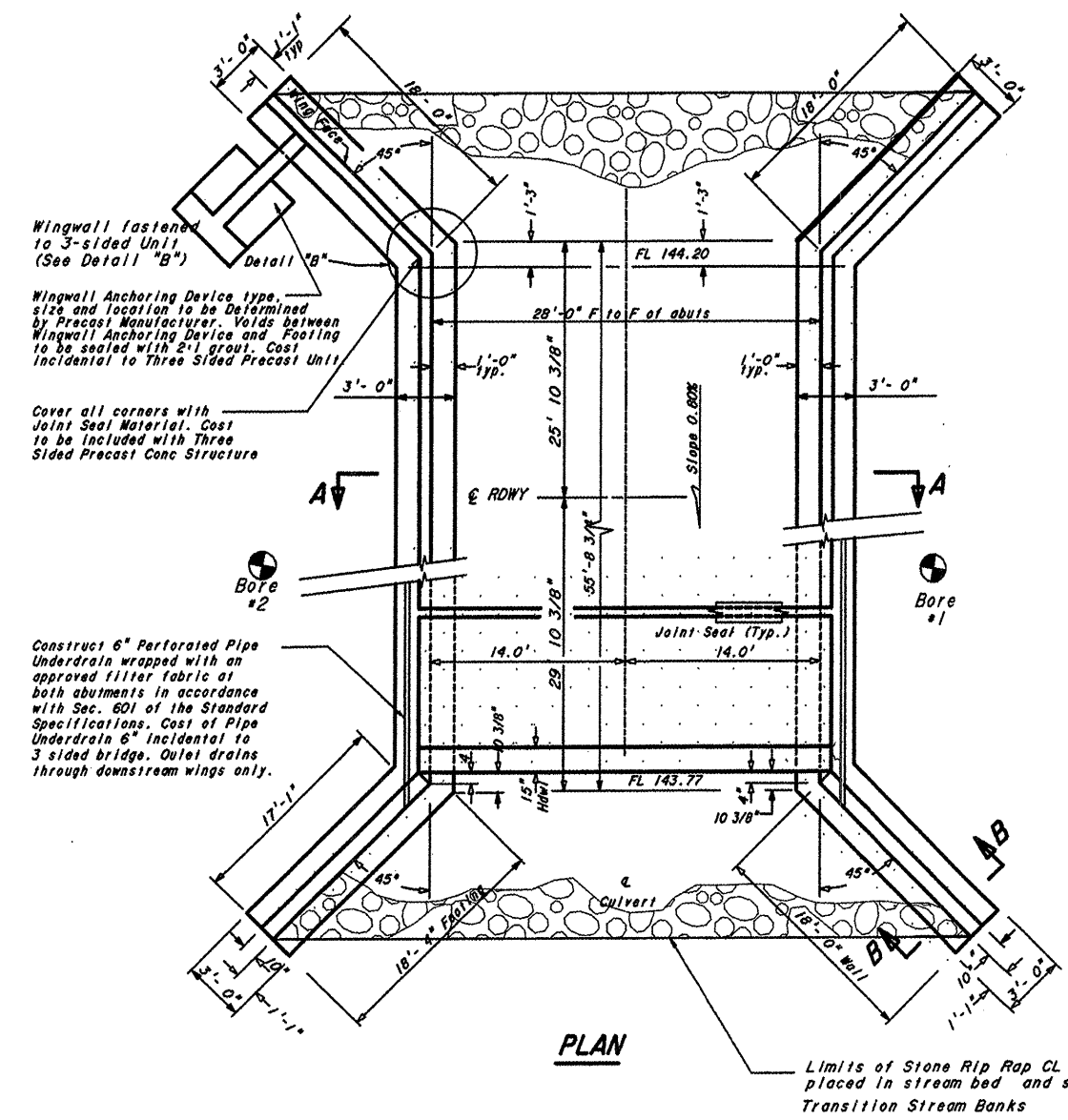
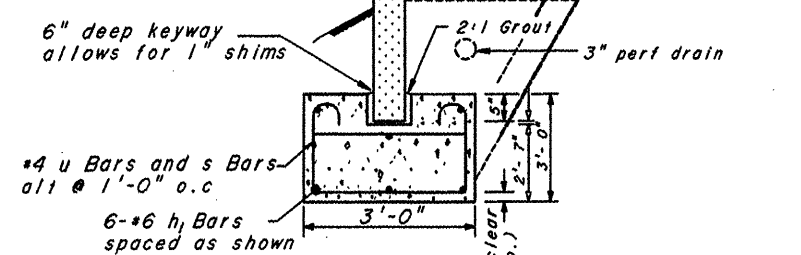


ROUTE NUMBER	SECTION	COUNTY	TOTAL SHEETS	SHEET NO.
1281	09-00648-00-BR	LASALLE	12	11
FED. ROAD DIST. NO.7	ILLINOIS	PROJECT BRS-1281(103)		

CONTRACT NO. 87367
JOB NO. C-93-064-08



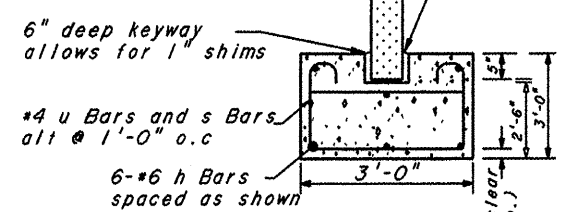
Wing thickness as required by the manufacturer
Wing center and footing center to be identical



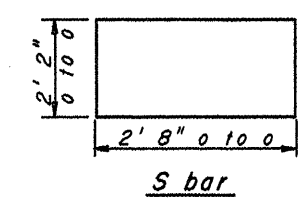
SECTION B-B

Note: The keyway width shall be determined by the precast unit width plus 3" each side to allow for grouting.

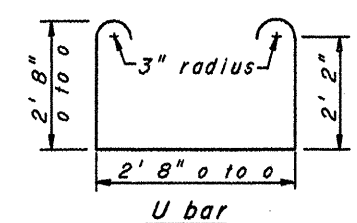
Precast deck unit stem thickness as required by the manufacturer
Stem center and footing center to be identical



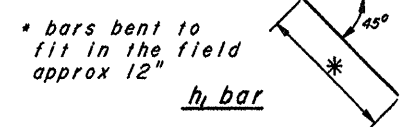
SECTION A-A



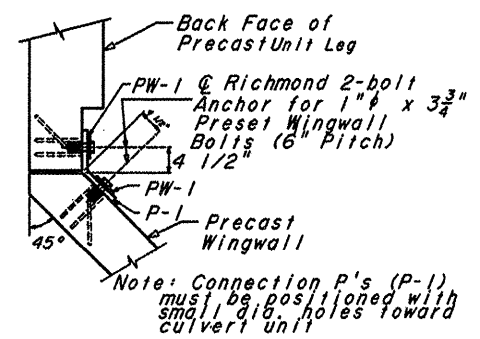
S bar



U bar



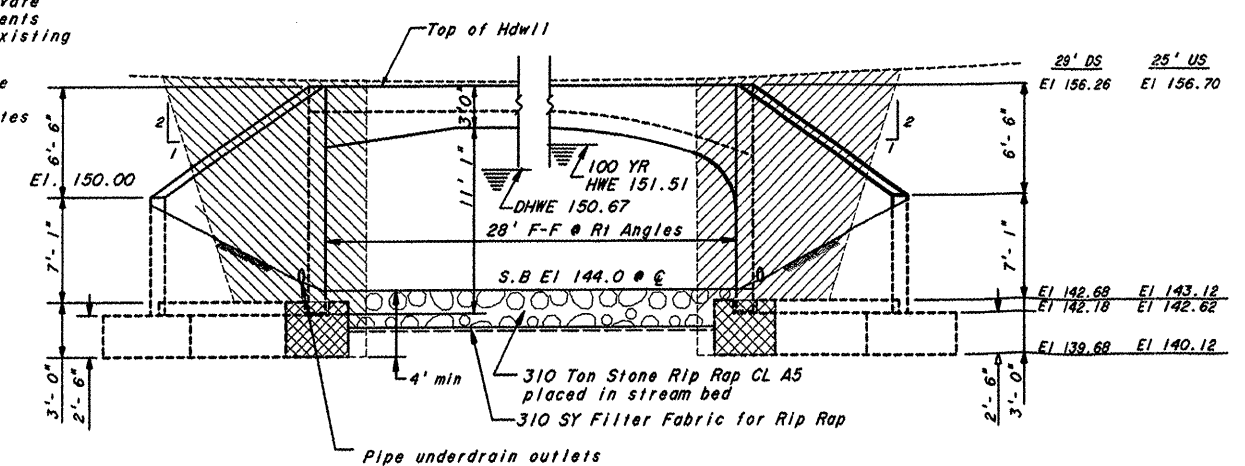
h1 bar



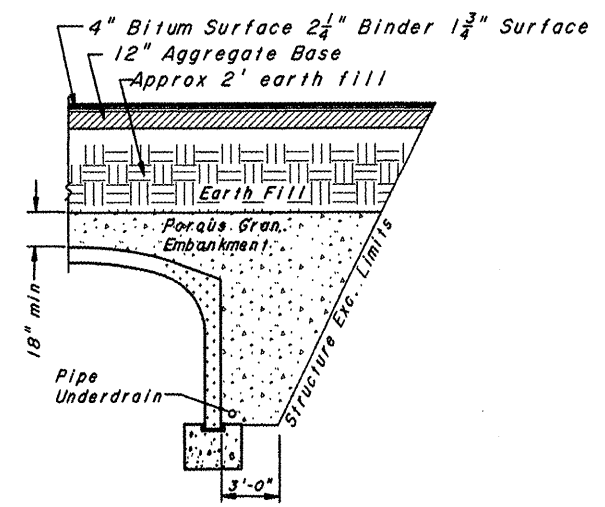
DETAIL "B"
(or alternate)

The Contractor shall excavate behind the existing abutments prior to removal of the existing structure.

Hatched area indicates the limits of Structure Exc. Cross hatched area indicates 40 CY Rock Excavation



END ELEVATION



BACKFILL DETAIL

BILL OF MATERIAL FOR ONE FOOTING

(Includes Footings for two Wingwalls)

Bar	No.	Size	Length	Shape
h	6	#6	55'-8"	—
h1	12	#5	19'-0"	—
s	45	#4	9'-8"	□
u	48	#4	12'-10"	□

Concrete Structures * 28.0 Cu.Yd.
Reinforcement Bars * 1445 Pounds

* see General Notes on sheet 9 regarding the footing design

3 SIDED BRIDGE DETAILS
COUNTY HIGHWAY 6
FAS 1281