

STATE OF ILLINOIS
DEPARTMENT OF TRANSPORTATION
DIVISION OF HIGHWAYS

F. A. RFL.	SECTION	COUNTY	TOTAL SHEETS	SHEET NO.
	12-00061-00-SG	COOK	16	1
STA. 11+00		TO STA. 30+50		
FED. ROAD DIST. NO.	ILLINOIS	FED. AID PROJECT	SRTS-4009(217)	

CONTRACT # 61B28

PLANS FOR PROPOSED FEDERAL AID HIGHWAY

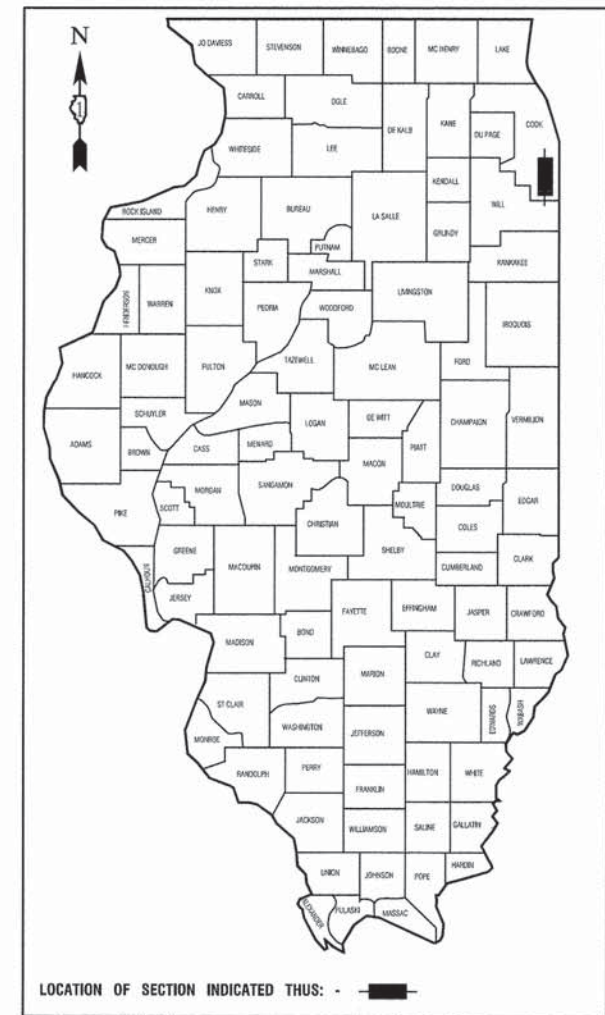
INDEX OF SHEETS

1. COVER SHEET, INDEX OF SHEETS & STATE STANDARDS
2. SUMMARY OF QUANTITIES & GENERAL NOTES
3. TYPICAL SECTIONS
- 4-5. SIDEWALK PLAN & PROFILE
6. SAFE ROUTES TO SCHOOL SAFETY FLASHERS
7. SAFETY FLASHERS DETAILS
8. IDOT DISTRICT 1 STANDARD DETAILS
- 9.-16. CROSS SECTIONS

HIGHWAY STANDARDS

- | | |
|-----------|--|
| 000001-06 | STANDARD SYMBOLS, ABBREVIATIONS AND PATTERNS |
| 424001-08 | PERPENDICULAR CURB RAMPS |
| 424011-02 | CORNER PARALLEL CURB RAMPS FOR SIDEWALKS |
| 424016-02 | MID-BLOCK CURB AND RAMPS FOR SIDEWALKS |
| 701501-06 | URBAN LANE CLOSURE, 2L, 2W, UNDIVIDED |
| 701801-05 | SIDEWALK, CORNER OR CROSSWALK CLOSURE |
| 701901-04 | TRAFFIC CONTROL DEVICES |

**MATTESON AVENUE
VILLAGE COMMONS TO HALLOWAY STREET
SAFE ROUTES TO SCHOOL
PROJECT NO.: SRTS-4009(217)
SECTION NO.: 12-00061-00-SG
VILLAGE of MATTESON
COOK COUNTY
JOB NO.: C-91-020-13**



STATE OF ILLINOIS DEPARTMENT OF TRANSPORTATION
DIVISION OF HIGHWAYS

Approved: *[Signature]*
Mayor, Village of Matteson

Passed: February 18, 2015
[Signature]
District 1 Engineer of Local Roads & Streets

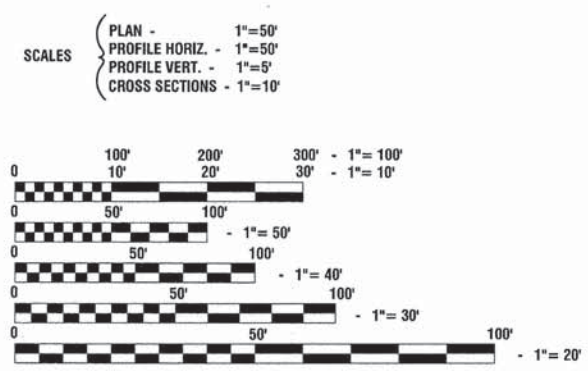
Released for Bid
Based on Limited
Review: February 18, 2015
[Signature]
Deputy Director of Highways, Region 1 Engineer

PRINTED BY THE AUTHORITY OF
THE STATE OF ILLINOIS

PREPARED BY OR UNDER THE
DIRECT SUPERVISION OF:
[Signature]
1/22/2015

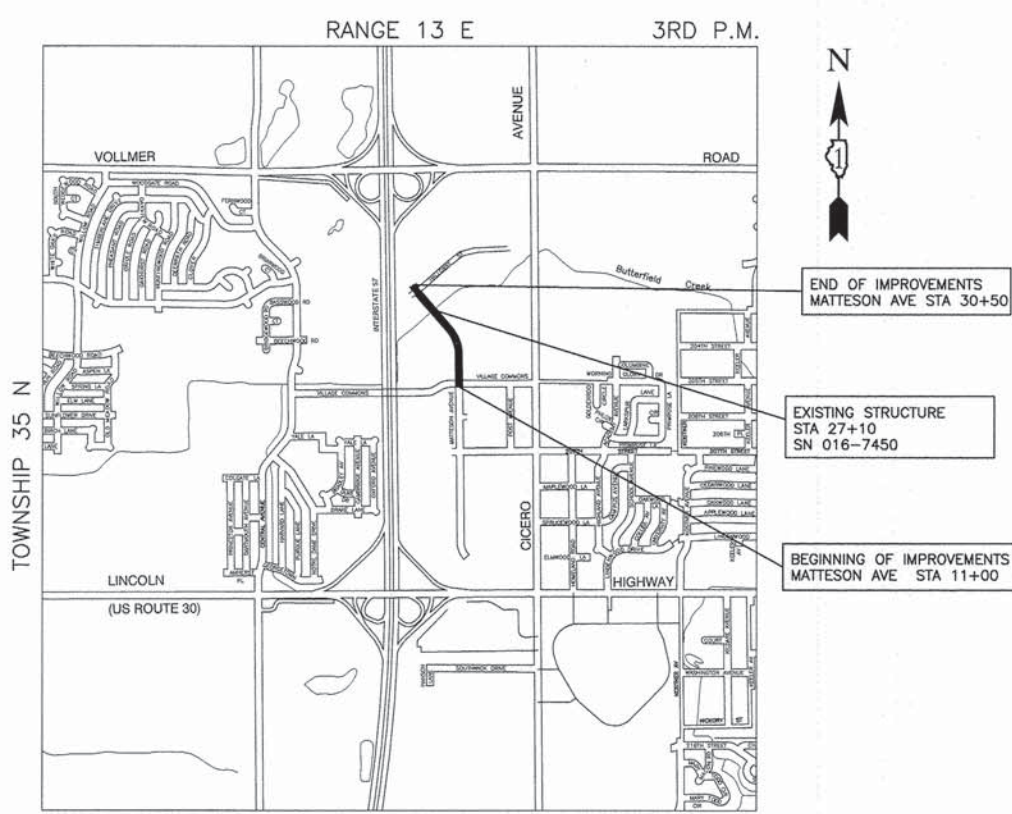
MATTESON AVENUE

2015 ADT - 500
POSTED SPEED LIMIT - 25 mph
DESIGN DESIGNATION - LOCAL



FULL SIZE PLANS HAVE BEEN PREPARED USING STANDARD
ENGINEERING SCALES, REDUCED SIZED PLANS WILL NOT
CONFORM TO STANDARD SCALES, IN MAKING MEASUREMENTS
ON REDUCED PLANS, THE ABOVE SCALES MAY BE USED.

J. U. L. I. E.
JOINT UTILITY LOCATION INFORMATION FOR EXCAVATION
1 - 800 - 892 - 0123 or 811



RICH TOWNSHIP **LOCATION MAP**

GROSS LENGTH=1,950 FEET=0.36 MILES
NET LENGTH=1,950 FEET=0.36 MILES

CONTRACT NO. 61B28

I.D.O.T. FEDERAL AID DESIGN ENGINEER: FAWAD AQUEEL, P.E. 847-705-4021, SCHAUMBURG, IL.
CONSULTANTS: ROBINSON ENGINEERING, LTD. 708-331-6700

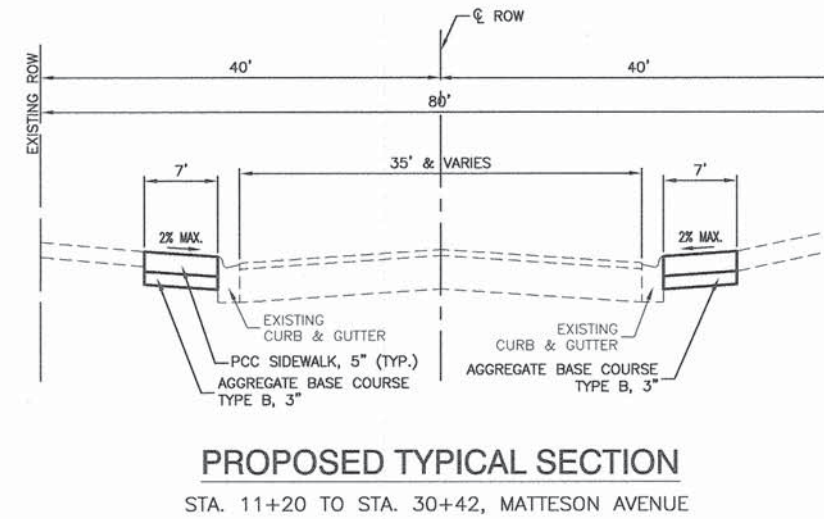
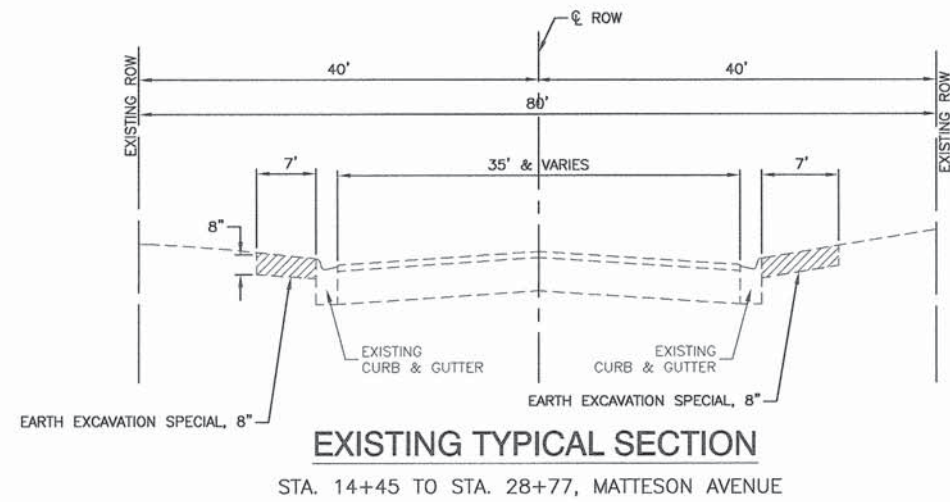
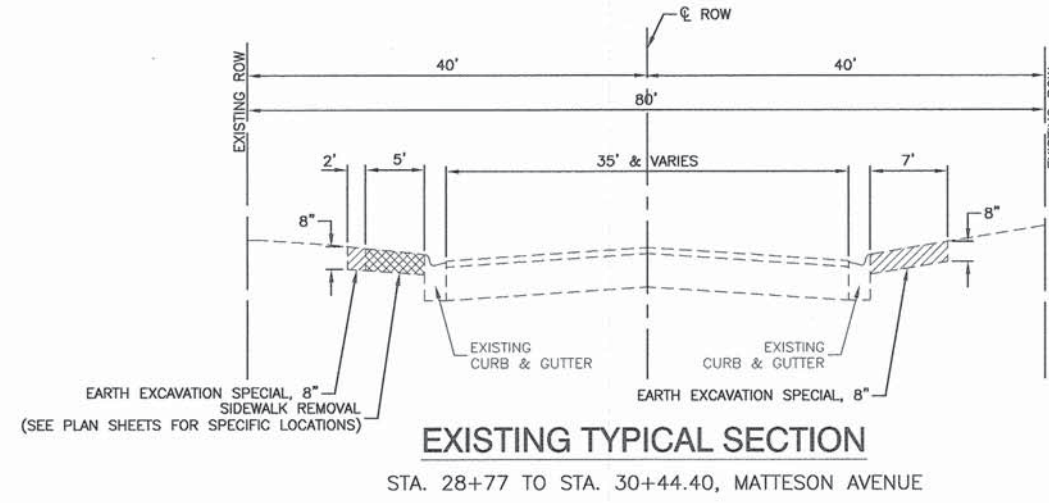
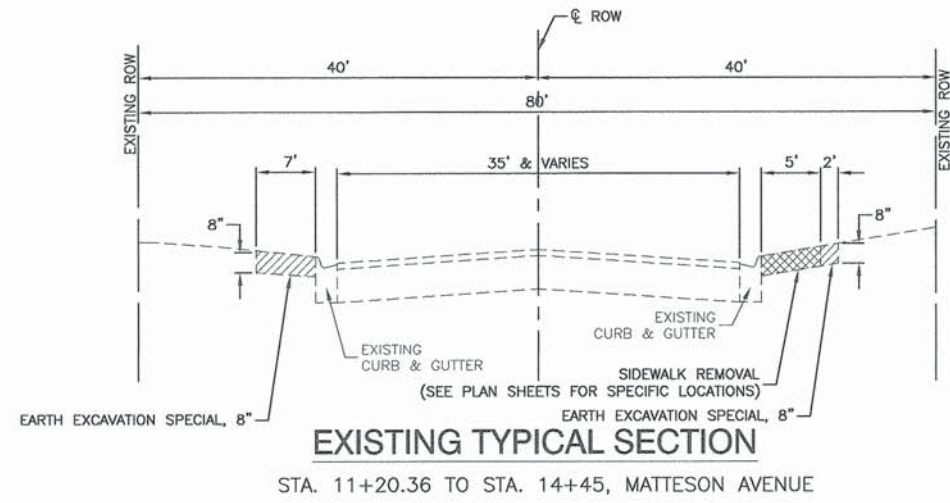
SUMMARY OF QUANTITIES				TOTAL	CONSTRUCTION
S.I.	CODE NO.	ITEM	UNIT	QUANTITY	TYPE CODE
	35101598	AGGREGATE BASE COURSE, TYPE B 3"	SQ YD	2825	0021
	42400200	PORTLAND CEMENT CONCRETE SIDEWALK, 5 INCH	SQ FT	25410	0021
	42400800	DETECTABLE WARNINGS	SQ FT	40	0021
	44000600	SIDEWALK REMOVAL	SQ FT	515	0021
	60300105	FRAMES AND GRATES TO BE ADJUSTED	EACH	38	0021
	67100100	MOBILIZATION	L SUM	1	0021
	70102620	TRAFFIC CONTROL AND PROTECTION, STANDARD 701501	L SUM	1	0021
	70102640	TRAFFIC CONTROL AND PROTECTION, STANDARD 701801	L SUM	1	0021
	X2020410	EARTH EXCAVATION (SPECIAL)	CU YD	725	0021
*	Z0033064	SOLAR EQUIPMENT	EACH	5	0021
	XX006343	SEEDING (COMPLETE)	SQ YD	810	0021

* - INDICATES SPECIALTY ITEMS

GENERAL NOTES

- BEFORE STARTING ANY EXCAVATION THE CONTRACTOR SHALL CALL "J.U.L.I.E." AT (800) 892-0123 OR 811 AND (312) 744-7000 FOR FIELD LOCATIONS OF BURIED ELECTRIC, TELEPHONE AND GAS UTILITIES. (48 HOUR NOTIFICATION REQUIRED)
- UTILITIES INDICATED ON THE PLANS ARE PROVIDED FOR THE CONTRACTOR'S USE AND ARE BASED UPON INFORMATION AVAILABLE AT THE TIME OF THE ADVERTISEMENT FOR BIDS. THE OWNER AND ENGINEER DO NOT GUARANTEE THE ACCURACY OF UTILITY INFORMATION.
- IT SHALL BE THE CONTRACTOR'S RESPONSIBILITY TO VERIFY ALL DIMENSIONS AND CONDITIONS EXISTING IN THE FIELD PRIOR TO CONSTRUCTION AND ORDERING OF MATERIALS.
- THE THICKNESS OF HMA MIXTURE STATED IN THE SPECIFICATIONS IS THE NOMINAL THICKNESS. DEVIATIONS FROM THE NOMINAL THICKNESS WILL BE PERMITTED WHEN SUCH DEVIATIONS OCCUR DUE TO IRREGULARITIES IN THE EXISTING SURFACE OR BASE ON WHICH THE HMA SURFACE IS PLACED.
- THE REMOVAL AND/OR REPLACEMENT OF ANY DRIVEWAYS, PAVEMENT, CURB, SIDEWALK, ETC. SHALL BE ACCOMPLISHED BY MEANS OF A SAW CUT JOINT, AT THE DIRECTION OF THE ENGINEER. THIS WORK WILL NOT BE PAID FOR SEPARATELY, BUT SHALL BE INCLUDED IN THE UNIT PRICE FOR THE ITEM BEING REMOVED.
- ANY LOOSE MATERIAL DEPOSITED IN THE FLOW LINE OF DITCHES, GUTTERS OR OTHER DRAINAGE STRUCTURES SHALL BE REMOVED BY THE END OF EACH DAY BY THE CONTRACTOR AT THEIR EXPENSE.

PLAN	SUBMITTED	DATE
	PLOTTED	
	CHECKED	
	BY	
	DATE	
	NO. OF WAY CHECKED	
	CADD FILE NAME	



PROFILE	SUBMITTED	DATE
	PLOTTED	
	CHECKED	
	BY	
	DATE	
	GRADES CHECKED	
	SUR. NOTED	

FILE NAME = 13082-TYPX-01 - P01

USER NAME =	DESIGNED — ERR	REVISED —
	CHECKED — ERR	REVISED —
PLOT SCALE =	DRAWN — MED	REVISED —
PLOT DATE = 12-01-14	CHECKED — AG	REVISED —

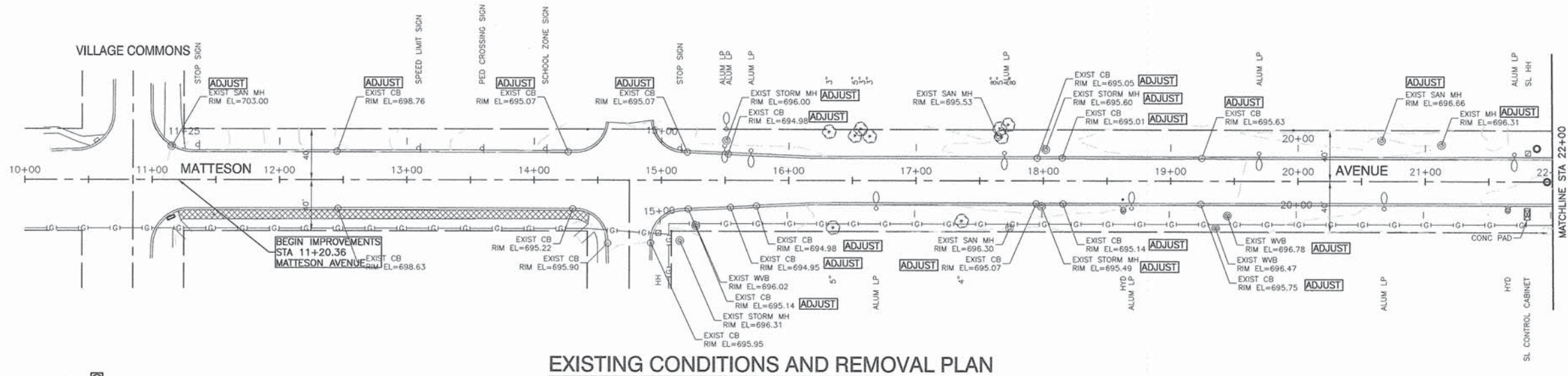
STATE OF ILLINOIS
DEPARTMENT OF TRANSPORTATION

MATTESON AVENUE SAFE ROUTES TO SCHOOL TYPICAL CROSS SECTIONS		
SCALE:	SHEET NO. 3 OF 16 SHEETS	STA. TO STA.

F.A. RTE.	SECTION	COUNTY	TOTAL SHEETS	SHEET NO.
	12-00061-00-SG	COOK	16	3
CONTRACT NO. 61B28				
FED. ROAD DIST. NO.	ILLINOIS	FED. AID PROJECT	SRTS-4009(217)	

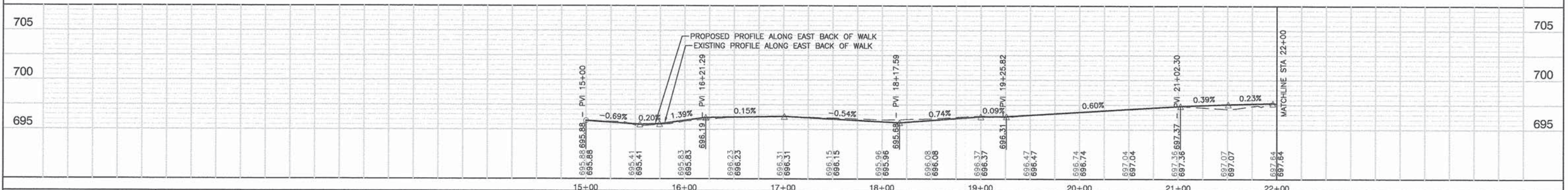
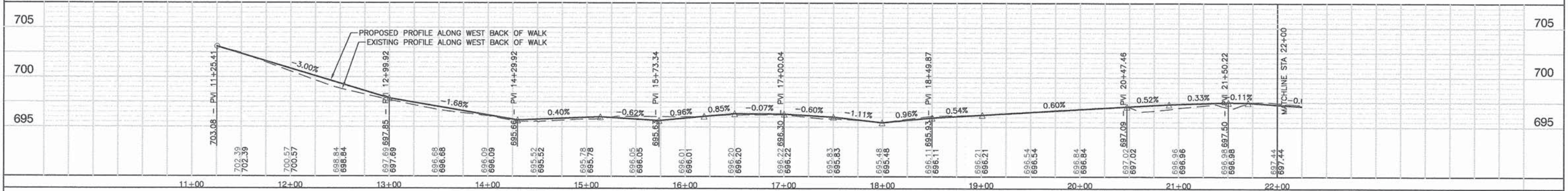
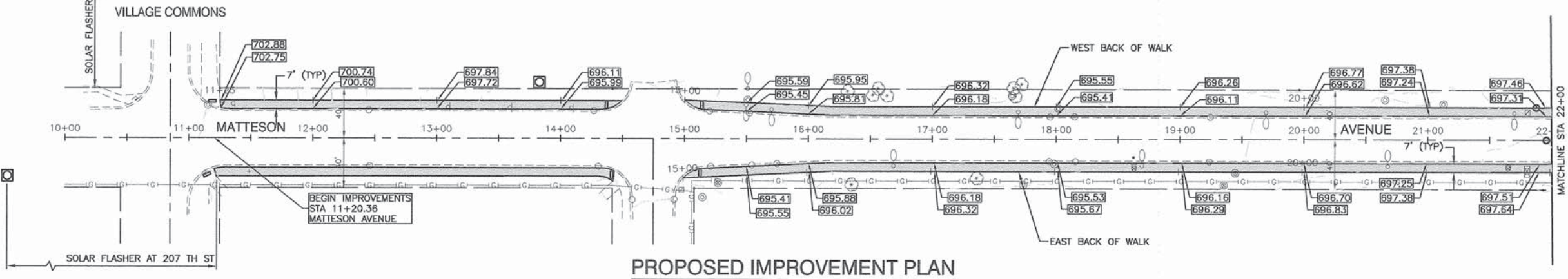
DATE	BY
PLAN	SURVEYED
NOTE BOOK NO.	ALIGNMENT CHECKED
	RT. OF WAY CHECKED
	LOAD FILE NAME

DATE	BY
PROFILE	SURVEYED
NOTE BOOK B.M. NOTED	GRADES CHECKED

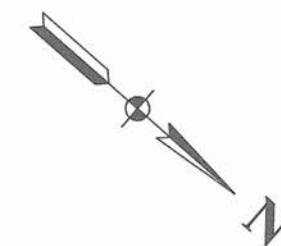
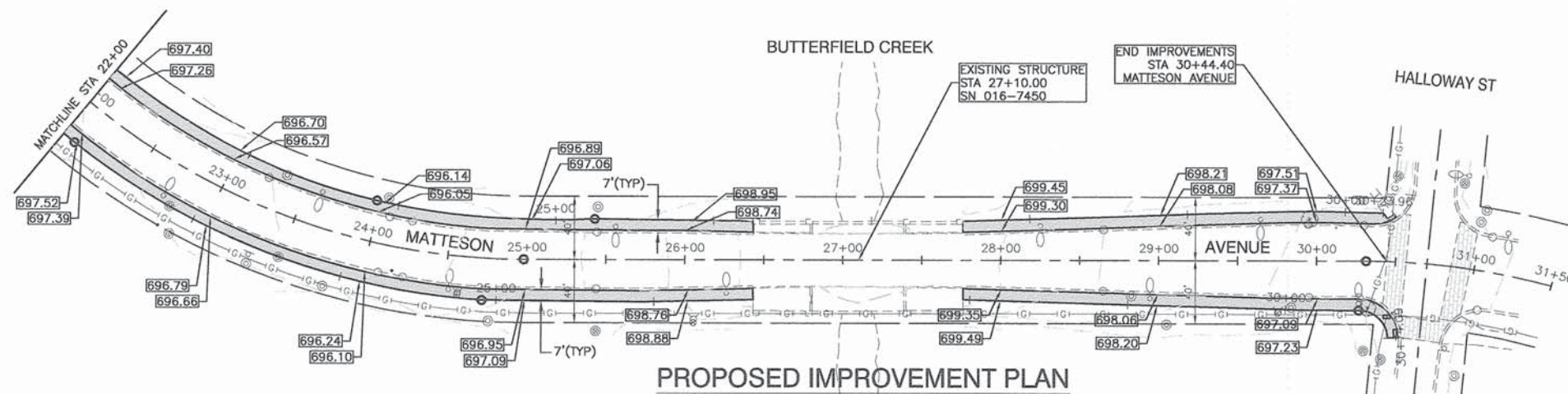
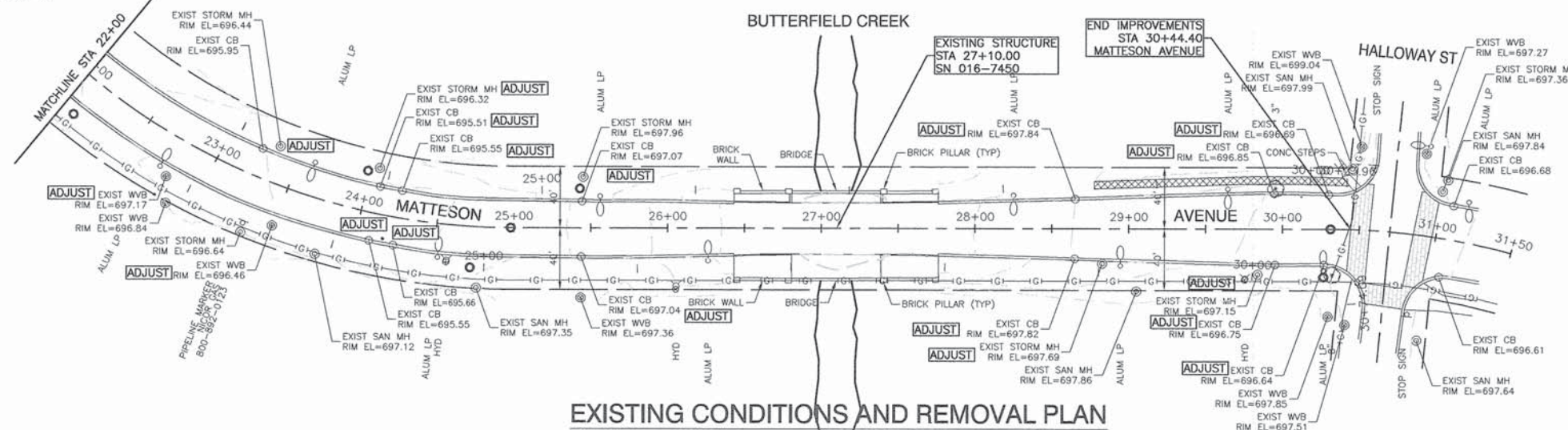


BENCH MARK:
 WATER HYDRANT ON EAST SIDE OF MATTESON AVENUE STA 21+65
 ELEVATION = 757.75'

- LEGEND**
- SIDEWALK REMOVAL
 - DRIVEWAY PAVEMENT REMOVAL
 - PORTLAND CEMENT CONCRETE SIDEWALK, 5" AGGREGATE BASE COURSE, TYPE B, 3"
 - DETECTABLE WARNINGS
 - ADJUST STRUCTURE FRAMES
 - SOLAR FLASHER, TO COMPLY WITH MUTCD STANDARD

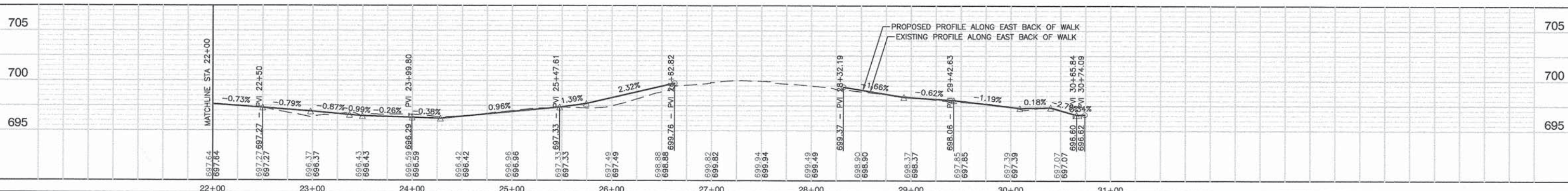
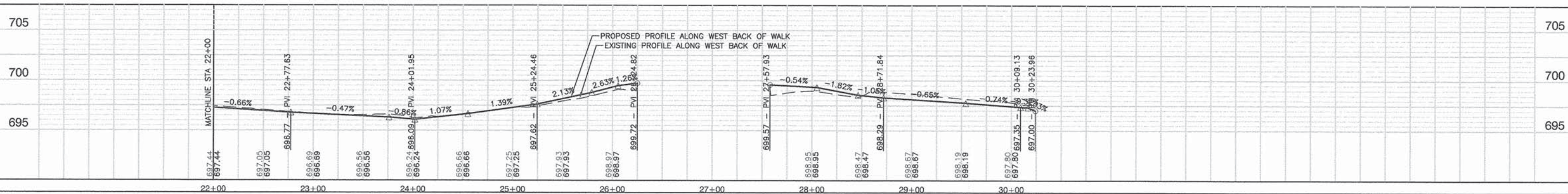


FILE NAME = 13682-PLP8-01 - IDOT PLP801	USER NAME =	DESIGNED -- ERR	REVISED --	STATE OF ILLINOIS DEPARTMENT OF TRANSPORTATION	MATTESON AVENUE SAFE ROUTES TO SCHOOL PLAN & PROFILE		F.A. RTE.	SECTION	COUNTY	TOTAL SHEETS	SHEET NO.			
	PLOT SCALE =	CHECKED -- ERR	REVISED --					12-00061-00-SG	COOK	16	4			
	PLOT DATE = 12-01-14	DRAWN -- MED	REVISED --							CONTRACT NO. 61B28				
		CHECKED -- AG	REVISED --				SCALE: 1"=50'	SHEET NO. 4	OF 16 SHEETS	STA.	TO STA.	FED. ROAD DIST. NO.	ILLINOIS	FED. AID PROJECT



LEGEND

- SIDEWALK REMOVAL
- DRIVEWAY PAVEMENT REMOVAL
- PORTLAND CEMENT CONCRETE SIDEWALK, 5' AGGREGATE BASE COURSE, TYPE B, 3"
- DETECTABLE WARNINGS
- ADJUST STRUCTURE FRAMES
- SOLAR FLASHER, TO COMPLY WITH MUTCD STANDARD



DATE: _____ BY: _____

PLAN

SURVEYED: _____
 PLANNED: _____
 CHECKED: _____
 RT. OF WAY CHECKED: _____
 NOTE BOOK NO.: _____
 DTD FILE NAME: _____

DATE: _____ BY: _____

PROFILE

SURVEYED: _____
 CHECKED: _____
 B.M. NOTED: _____
 NOTE BOOK NO.: _____

FILE NAME = 13682-PLPR-01 - IDOT PLPR02	USER NAME =	DESIGNED - ERR	REVISED -	STATE OF ILLINOIS DEPARTMENT OF TRANSPORTATION	MATTESON AVENUE SAFE ROUTES TO SCHOOL PLAN & PROFILE			F.A. RTE.	SECTION	COUNTY	TOTAL SHEETS	SHEET NO.
	PLOT SCALE =	CHECKED - ERR	REVISED -		12-0061-00-SG	COOK	16	5				
	PLOT DATE = 12-01-14	DRAWN - MED	REVISED -		CONTRACT NO. 61B28							
		CHECKED - AG	REVISED -		FED. ROAD DIST. NO. ILLINOIS FED. AID PROJECT SRTS-4009(217)							
				SCALE: 1"=50'	SHEET NO. 5	OF 16 SHEETS	STA.	TO STA.				



LEGEND

☐ SOLAR FLASHER, TO COMPLY WITH MUTCD STANDARD

FILE NAME = 13662-PLAN-01 - IDOT P01

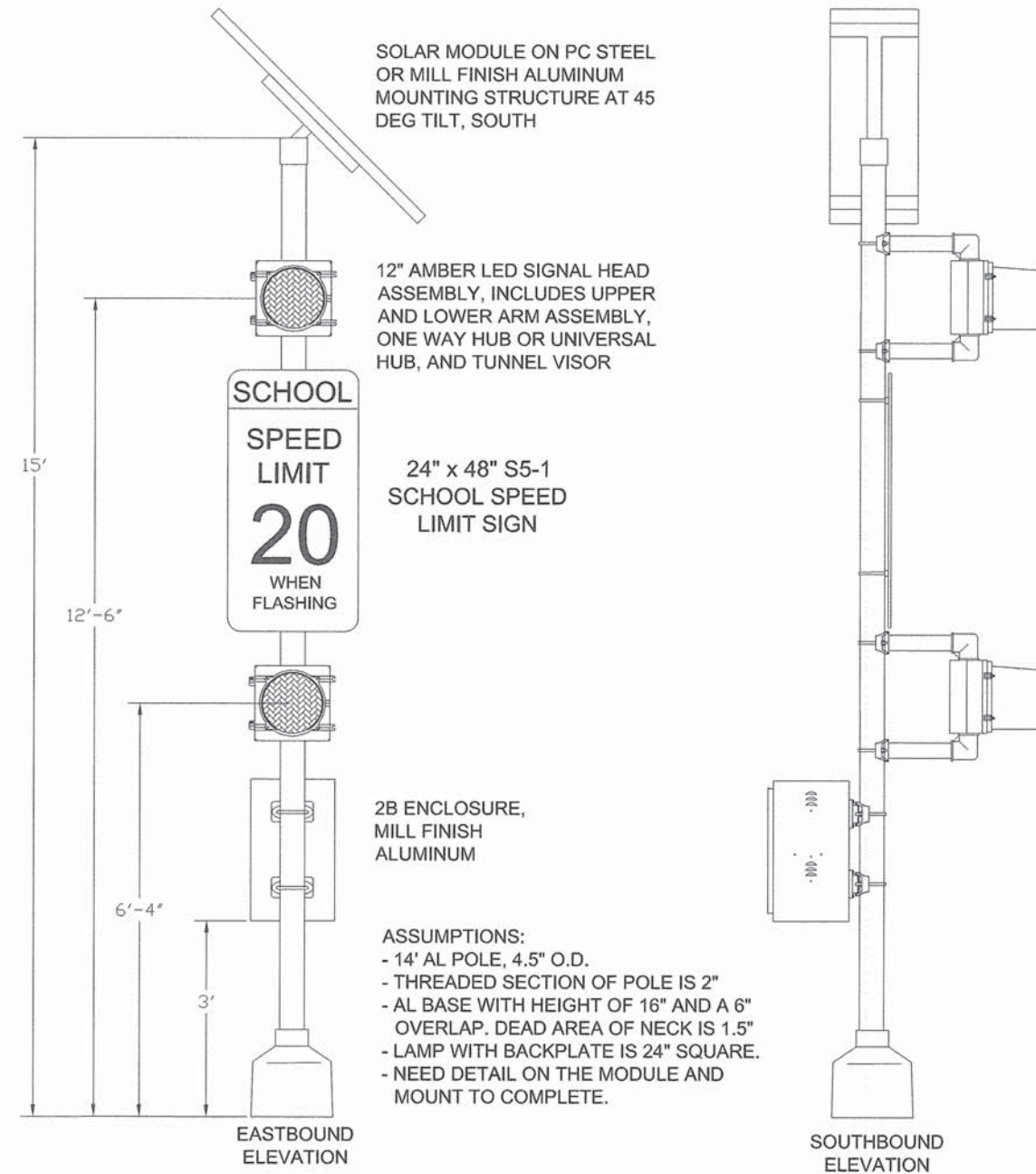
USER NAME =	DESIGNED — ERR	REVISED —
	CHECKED — ERR	REVISED —
PLOT SCALE =	DRAWN — MED	REVISED —
PLOT DATE = 12-01-14	CHECKED — AG	REVISED —

**STATE OF ILLINOIS
DEPARTMENT OF TRANSPORTATION**

**MATTESON AVENUE
SAFE ROUTES TO SCHOOL
SAFE ROUTES TO SCHOOL SAFETY FLASHERS**

SCALE: SHEET NO. 6 OF 16 SHEETS STA. TO STA.

F.A. RTE.	SECTION	COUNTY	TOTAL SHEETS	SHEET NO.
	12-00061-00-SG	COOK	16	6
		CONTRACT NO. 61B28		
FED. ROAD DIST. NO.		ILLINOIS	FED. AID PROJECT SRTS-4009(217)	



FILE NAME = 13682-DTLS-01 - IDOT P01

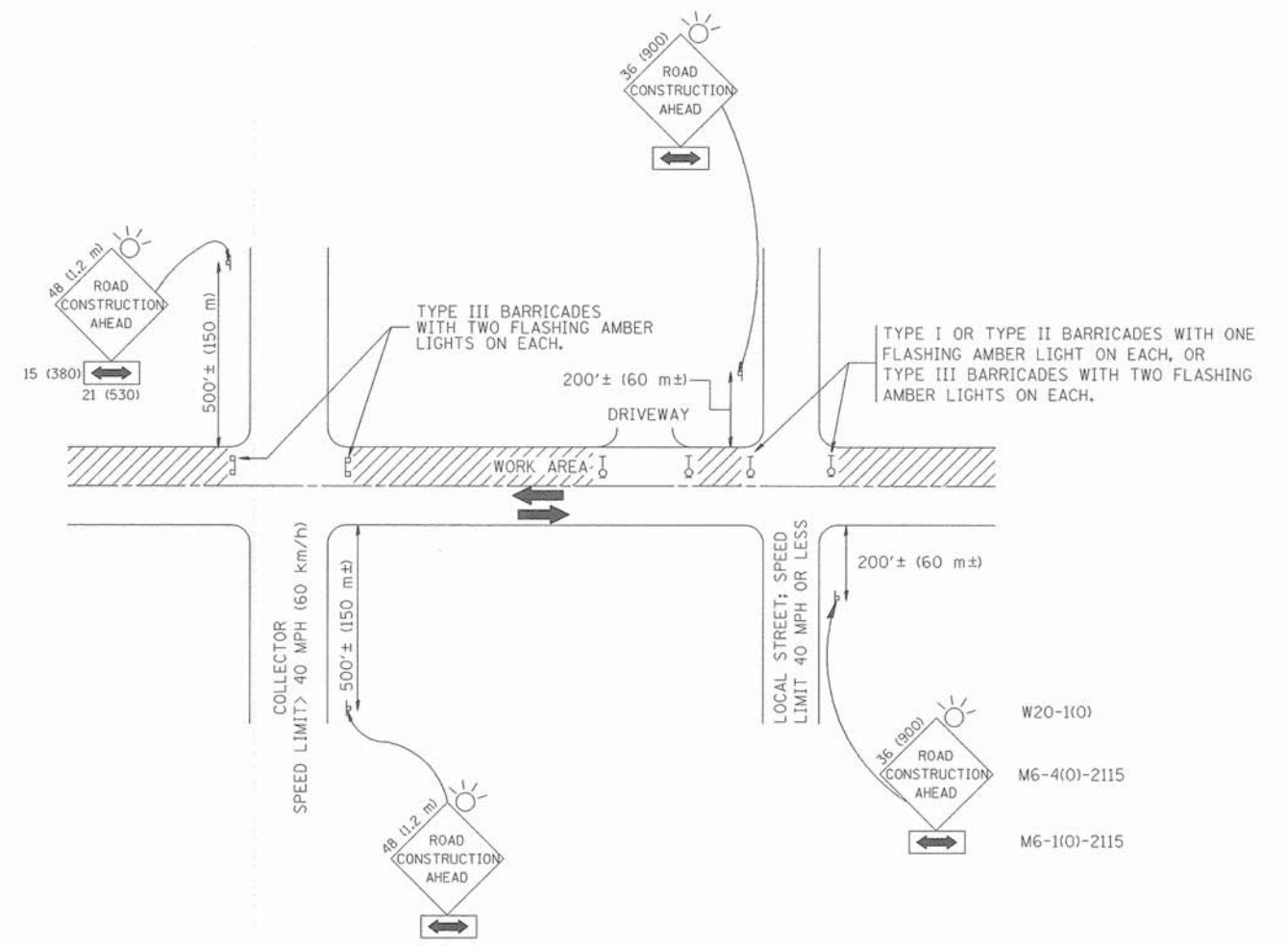
USER NAME =	DESIGNED -- ERR	REVISED --
	CHECKED -- ERR	REVISED --
PLOT SCALE =	DRAWN -- ACAD	REVISED --
PLOT DATE = 12-01-14	CHECKED -- ACAD	REVISED --

STATE OF ILLINOIS
DEPARTMENT OF TRANSPORTATION

SAFE ROUTES TO SCHOOL
MATTESON AVENUE
SAFETY FLASHER DETAILS

F.A. RTE.	SECTION	COUNTY	TOTAL SHEETS	SHEET NO.
	12-00061-00-SG	COOK	16	7
CONTRACT NO. 61B28				
FED. ROAD DIST. NO.	ILLINOIS	FED. AID PROJECT	SRTS-4009(217)	

SCALE: -- SHEET NO. 7 OF 16 SHEETS STA. TO STA.



TRAFFIC CONTROL AND PROTECTION FOR SIDE ROADS, INTERSECTIONS, AND DRIVEWAYS

NOTES:

- A. FOR NO LANE RESTRICTION ON THE SIDE ROAD OR DRIVEWAYS
 1. SIDE ROAD WITH A SPEED LIMIT OF 40 MPH (60 km/h) OR LESS AS SHOWN ON THE DRAWING AND AS DIRECTED BY THE ENGINEER:
 - a) ONE **ROAD CONSTRUCTION AHEAD** SIGN 36 x 36 (900x900) WITH A FLASHER AND FLAG MOUNTED ON IT APPROXIMATELY 200' (60 m) IN ADVANCE OF THE MAIN ROUTE.
 - b) THE CLOSED PORTION OF THE MAIN ROUTE SHALL BE PROTECTED BY BLOCKING WITH TYPE I, TYPE II OR TYPE III BARRICADES, 1/3 OF THE CROSS SECTION OF THE CLOSED PORTION.
 2. SIDE ROAD WITH A SPEED LIMIT GREATER THAN 40 MPH (60 km/h) AS SHOWN ON THE DRAWING AND AS DIRECTED BY THE ENGINEER:
 - a) ONE **ROAD CONSTRUCTION AHEAD** SIGN 48 x 48 (1.2 m x 1.2 m) WITH A FLASHER MOUNTED ON IT APPROXIMATELY 500' (150 m) IN ADVANCE OF THE MAIN ROUTE.
 - b) THE CLOSED PORTION OF THE MAIN ROUTE SHALL BE PROTECTED BY BLOCKING WITH TYPE III BARRICADES, 1/2 OF THE CROSS SECTION OF THE CLOSED PORTION.
 3. WHEN THE SIDE ROAD LIES BETWEEN THE BEGINNING OF THE MAINLINE SIGNING AND THE WORK ZONE, A SINGLE HEADED ARROW (M6-1) SHALL BE USED IN LIEU OF THE DOUBLE HEADED ARROW (M6-4).
- B. FOR A LANE CLOSURE ON A SIDE ROAD OR DRIVEWAY:

USE APPLICABLE PORTIONS OF THE TYPICAL APPLICATION OF TRAFFIC CONTROL DEVICES (STD. 701501, STD. 701606 OR THE APPROPRIATE STANDARD). THE SPACING OF SIGNS AND BARRICADES SHALL BE ADJUSTED FOR FIELD CONDITIONS AS DIRECTED BY THE ENGINEER. THE DIRECTIONAL ARROW SHALL BE COVERED OR REMOVED WHEN NO LONGER CONSISTENT WITH THE SIDE ROAD LANE CLOSURE.
- C. ADVANCE WARNING SIGNS ARE TO BE OMITTED ON DRIVEWAY UNLESS OTHERWISE NOTED.
- D. THE TRAFFIC CONTROL AND PROTECTION FOR SIDE ROADS, INTERSECTIONS, AND DRIVEWAYS SHALL BE INCIDENTAL TO THE COST OF SPECIFIED TRAFFIC CONTROL STANDARDS OR ITEMS.

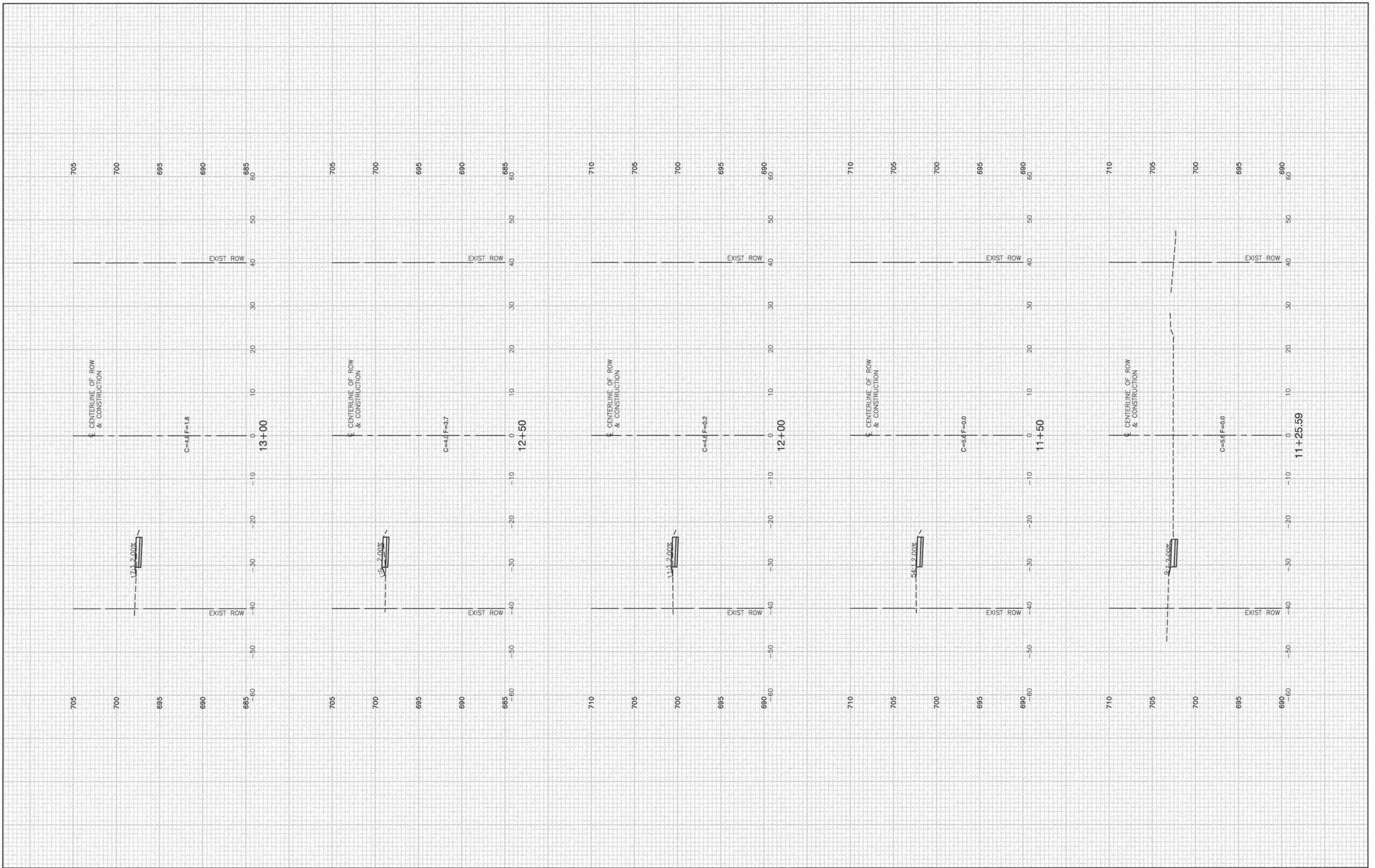
All dimensions are in millimeters (inches) unless otherwise shown.

FILE NAME = 13682-DTLS-01 - TC-10	USER NAME = goglianobt	DESIGNED -- LHA	REVISED -- J. OBERLE 10-18-95
	PLOT SCALE = 50,000' / IN.	DRAWN --	REVISED -- A. HOUSEH 03-06-96
	PLOT DATE = 1/4/2008	CHECKED -- 06-89	REVISED -- A. HOUSEH 10-15-96
			REVISED -- T. RAMMACHER 01-06-00

STATE OF ILLINOIS
DEPARTMENT OF TRANSPORTATION

TRAFFIC CONTROL AND PROTECTION FOR SIDE ROADS, INTERSECTIONS, AND DRIVEWAYS			
SCALE:	SHEET NO. 8 OF 16 SHEETS	STA.	TO STA.

F.A. RTE.	SECTION	COUNTY	TOTAL SHEETS	SHEET NO.
	12-00061-00-SG	COOK	16	8
TC-10			CONTRACT NO. 61B28	
FED. ROAD DIST. NO.		ILLINOIS FED. AID PROJECT SRTS-4009(217)		



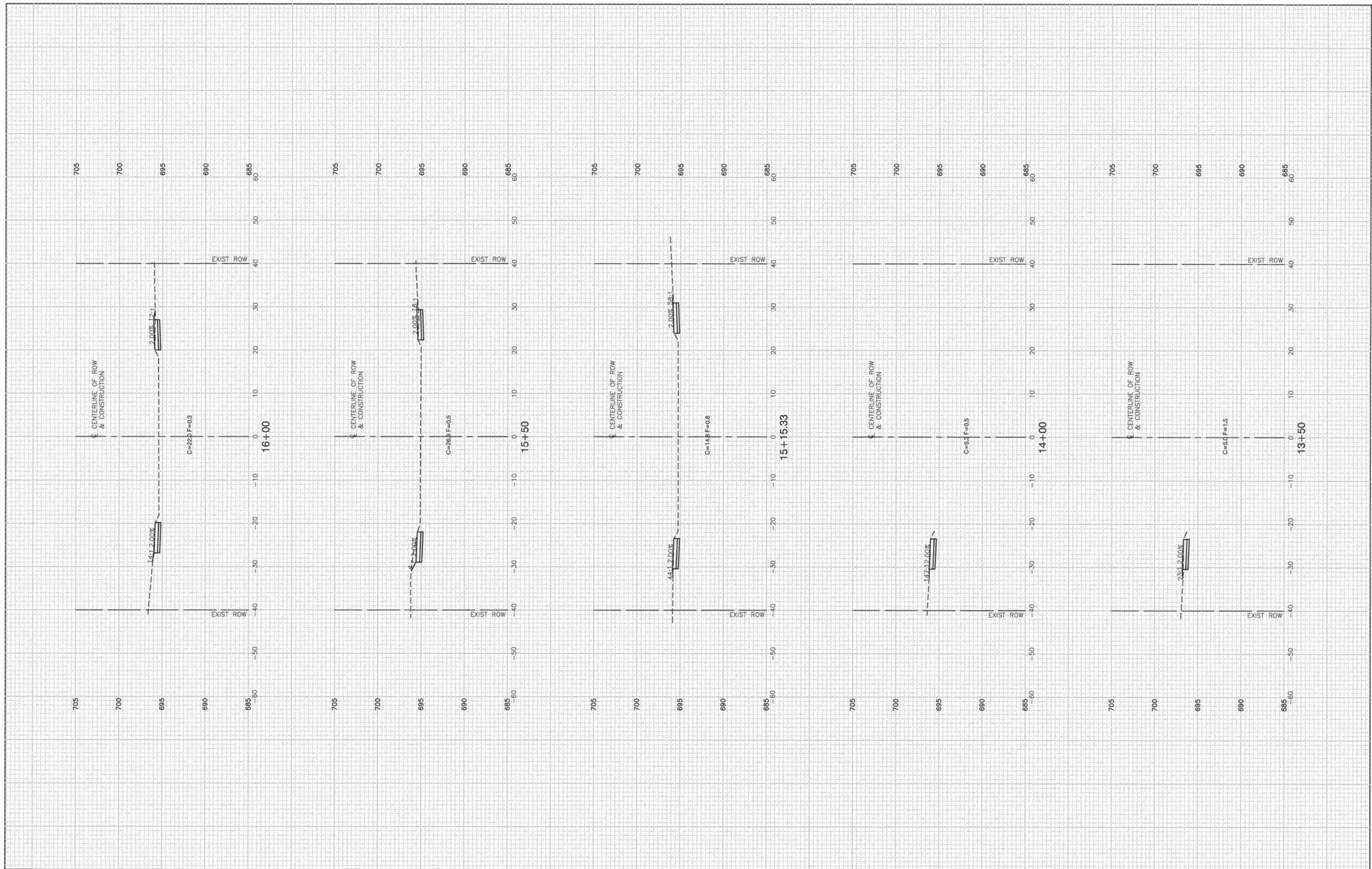
FILE NAME = 13682-XSCT-01 - IDOT P01
 USER NAME =
 PLOT SCALE =
 PLOT DATE = 12-01-14

DESIGNED	ERR	REVISED	-
CHECKED	ERR	REVISED	-
DRAWN	MED	REVISED	-
CHECKED	AG	REVISED	-

STATE OF ILLINOIS
 DEPARTMENT OF TRANSPORTATION

MATTESON AVENUE
 SAFE ROUTES TO SCHOOL
 CROSS SECTIONS
 SCALE: 1"=10'
 SHEET NO. 9 OF 16 SHEETS
 STA. TO STA.

F.A. RTE.	SECTION	COUNTY	TOTAL SHEETS	SHEET NO.
	12-00061-00-SG	COOK	16	9
FED. ROAD DIST. NO.		ILLINOIS FED. AID PROJECT	CONTRACT NO. 61B28	
			SRTS-4009(217)	



FILE NAME = 13682-XSCT-01 - IDOT P02
 USER NAME =
 PLOT SCALE =
 PLOT DATE = 12-01-14

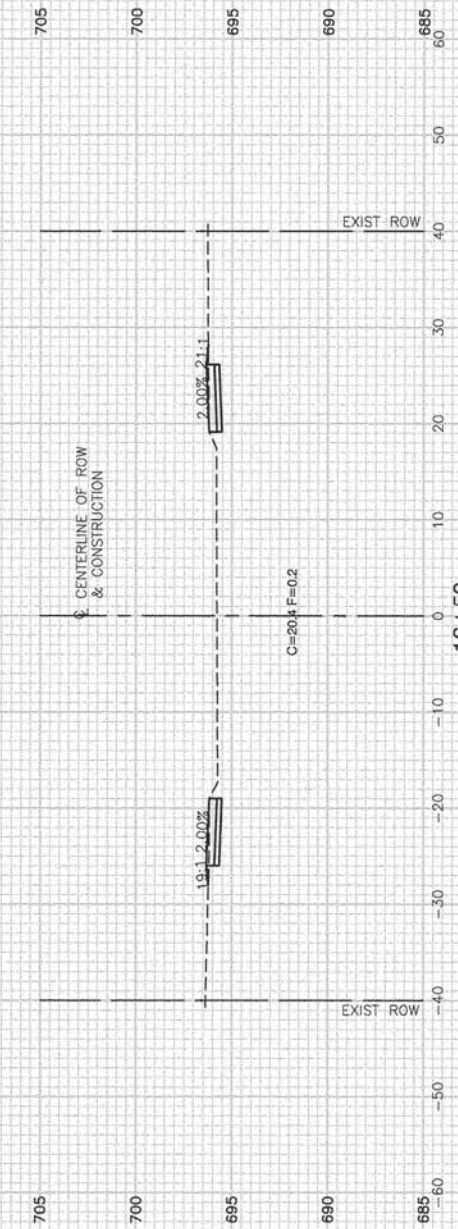
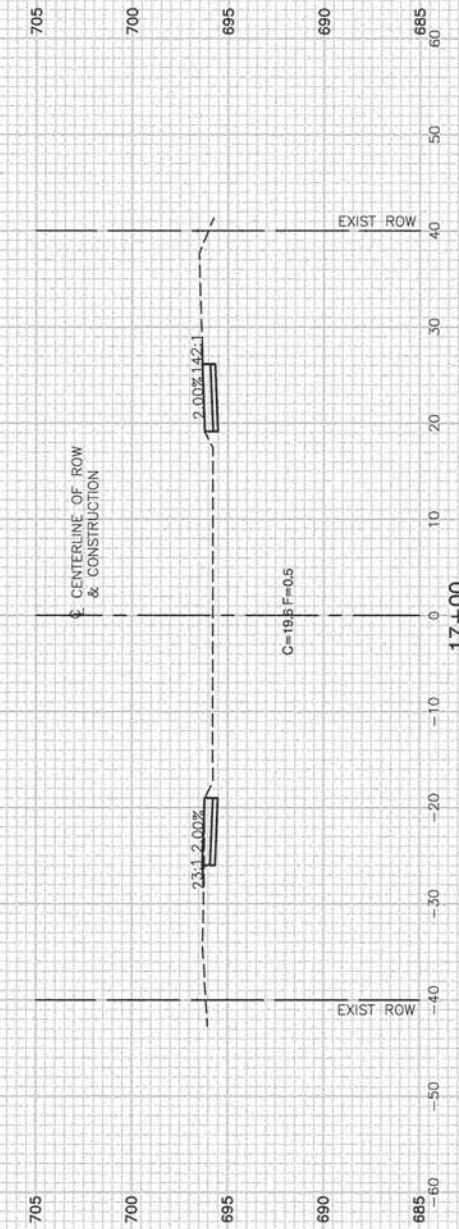
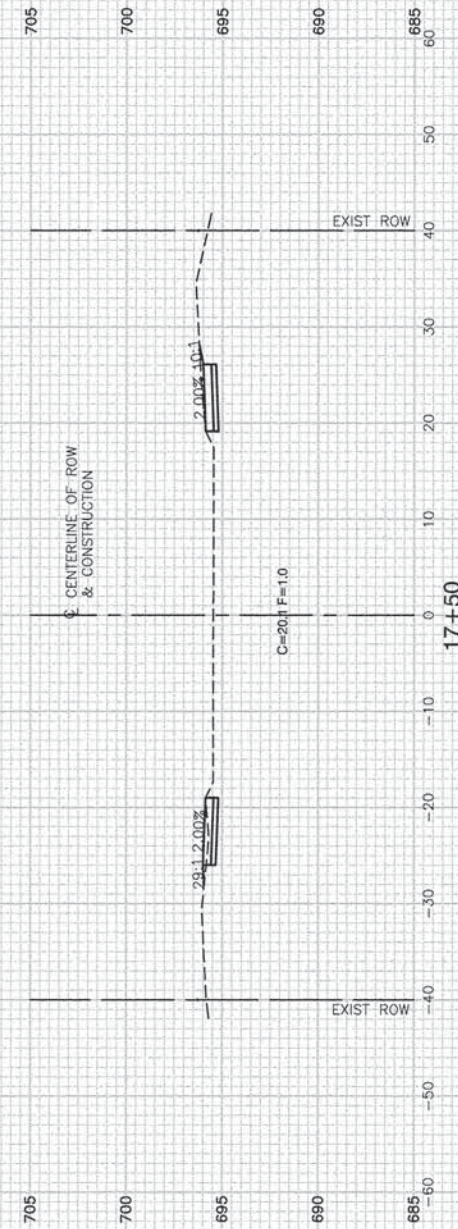
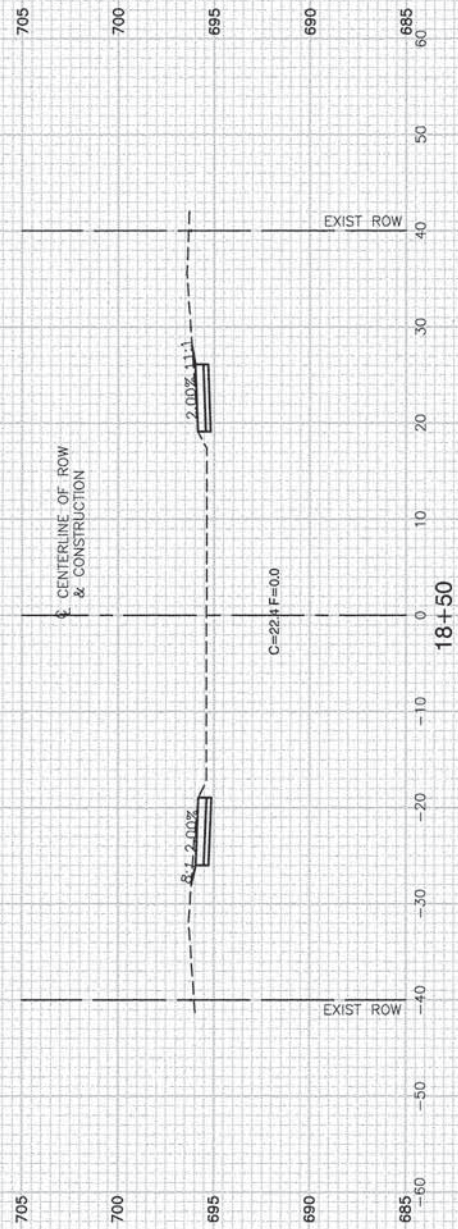
DESIGNED - ERR
 CHECKED - ERR
 DRAWN - MED
 CHECKED - AG

REVISED -
 REVISED -
 REVISED -
 REVISED -

STATE OF ILLINOIS
 DEPARTMENT OF TRANSPORTATION

MATTESON AVENUE
 SAFE ROUTES TO SCHOOL
 CROSS SECTIONS
 SCALE: 1"=10'
 SHEET NO. 10 OF 16 SHEETS
 STA. TO STA.

F.A. RTE.	SECTION	COUNTY	TOTAL SHEETS	SHEET NO.
	12-00061-00-SG	COOK	16	10
FED. ROAD DIST. NO.		ILLINOIS	CONTRACT NO. 61B28	
		FED. AID PROJECT	SRTS-4009(217)	



FILE NAME = 13682-YSC1-01 - IDOT P03

USER NAME =
 PLOT SCALE =
 PLOT DATE = 12-01-14

DESIGNED — ERR
 CHECKED — ERR
 DRAWN — MED
 CHECKED — AG

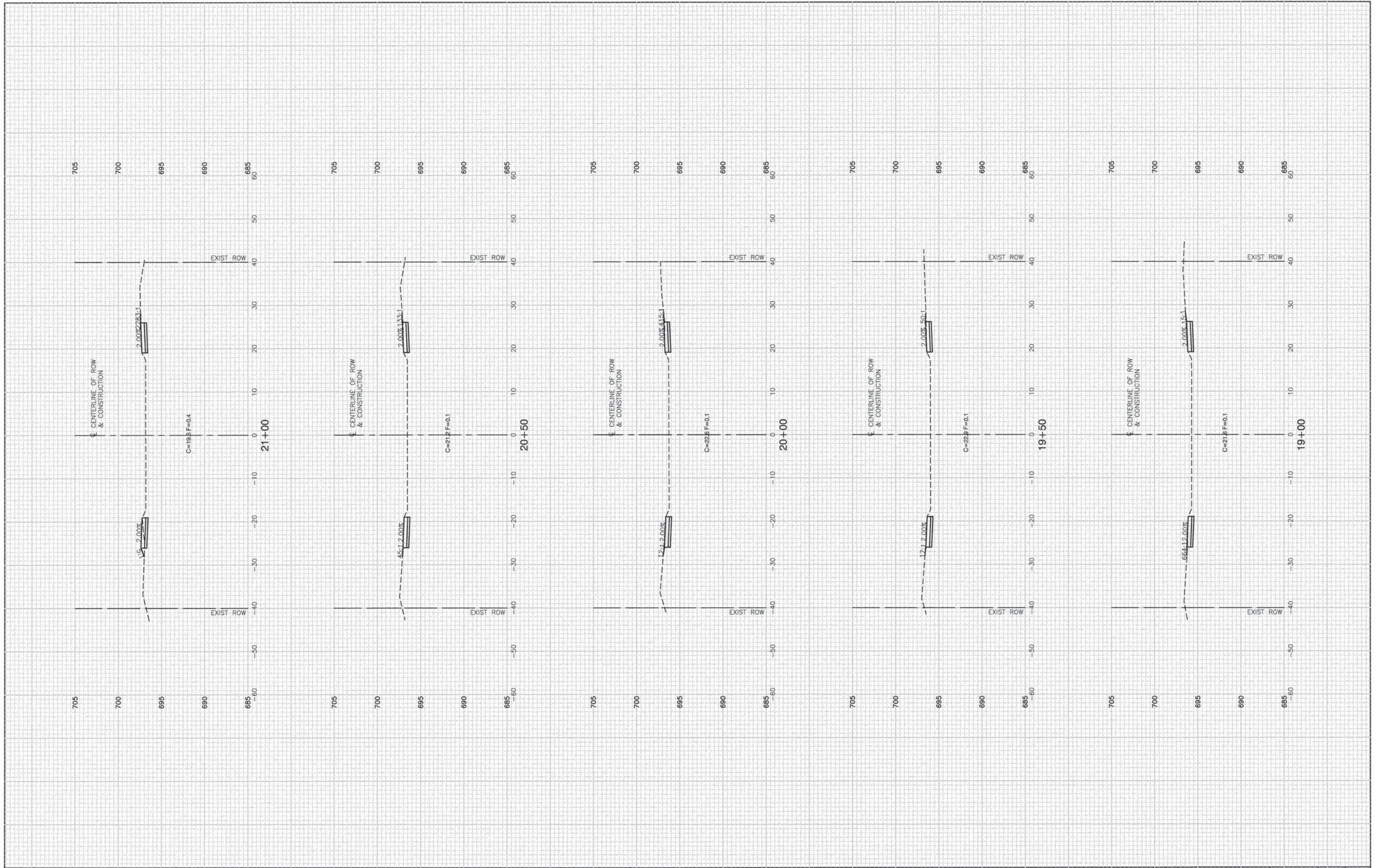
REVISED —
 REVISED —
 REVISED —
 REVISED —

STATE OF ILLINOIS
 DEPARTMENT OF TRANSPORTATION

MATTESON AVENUE
 SAFE ROUTES TO SCHOOL
 CROSS SECTIONS

SCALE: 1"=10'
 SHEET NO. 11 OF 16 SHEETS
 STA. TO STA.

F.A. RTE.	SECTION	COUNTY	TOTAL SHEETS	SHEET NO.
	12-00061-00-SG	COOK	16	11
FED. ROAD DIST. NO.		ILLINOIS	FED. AID PROJECT SRTS-4009(217)	
		CONTRACT NO. 61B28		



FILE NAME = 13882-XSCT-01 - IDOT P04

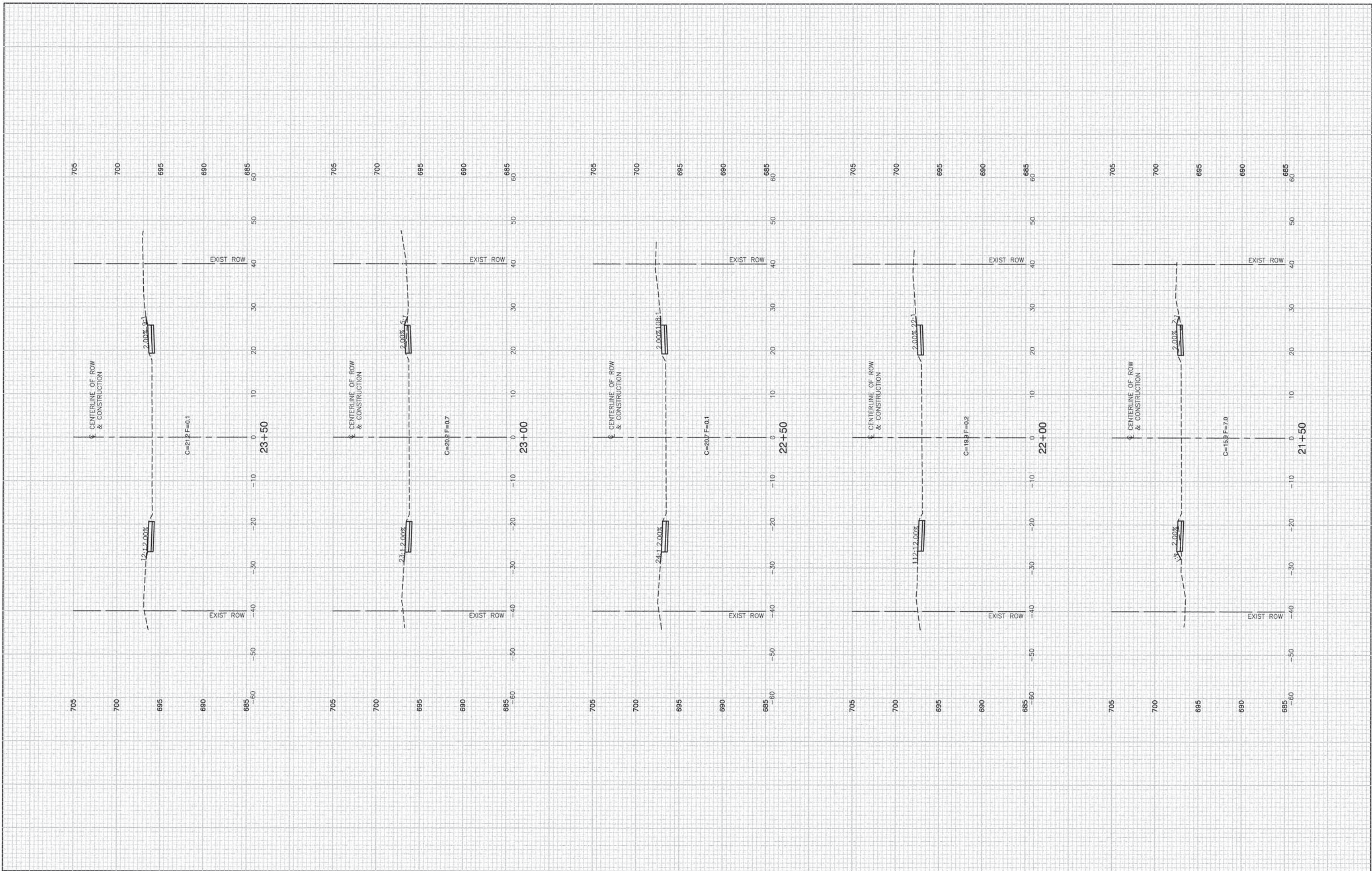
USER NAME =	DESIGNED — ERR	REVISED —
PLOT SCALE =	CHECKED — ERR	REVISED —
PLOT DATE = 12-01-14	DRAWN — MED	REVISED —
	CHECKED — AG	REVISED —

**STATE OF ILLINOIS
DEPARTMENT OF TRANSPORTATION**

**MATTESON AVENUE
SAFE ROUTES TO SCHOOL
CROSS SECTIONS**

SCALE: 1"=10' SHEET NO. 12 OF 16 SHEETS STA. TO STA.

F.A. RTE.	SECTION	COUNTY	TOTAL SHEETS	SHEET NO.
	12-00061-00-SG	COOK	16	12
CONTRACT NO. 61B28				
FED. ROAD DIST. NO.	ILLINOIS	FED. AID PROJECT	SRTS-4009(217)	



FILE NAME = 13682-VSCT-01 - IDOT P05

USER NAME =
 PLOT SCALE =
 PLOT DATE = 12-01-14

DESIGNED - ERR
 CHECKED - ERR
 DRAWN - MED
 CHECKED - AG

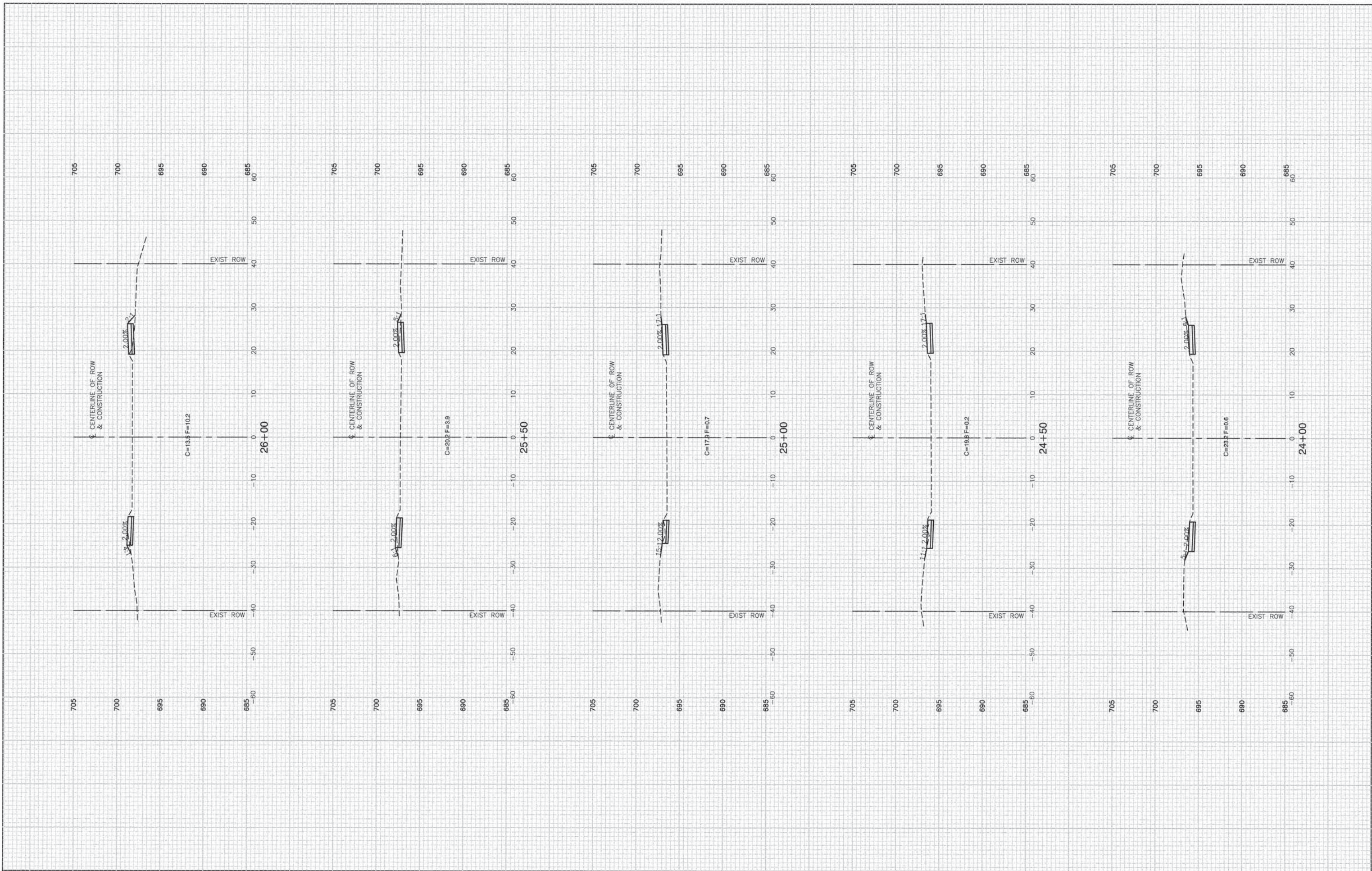
REVISED -
 REVISED -
 REVISED -
 REVISED -

STATE OF ILLINOIS
 DEPARTMENT OF TRANSPORTATION

MATTESON AVENUE
 SAFE ROUTES TO SCHOOL
 CROSS SECTIONS

SCALE: 1"=10'
 SHEET NO. 13 OF 16 SHEETS
 STA. TO STA.

F.A. RTE.	SECTION	COUNTY	TOTAL SHEETS	SHEET NO.
	12-00061-00-SG	COOK	16	13
FED. ROAD DIST. NO.		ILLINOIS	FED. AID PROJECT SRTS-4009(217)	
CONTRACT NO. 61B28				



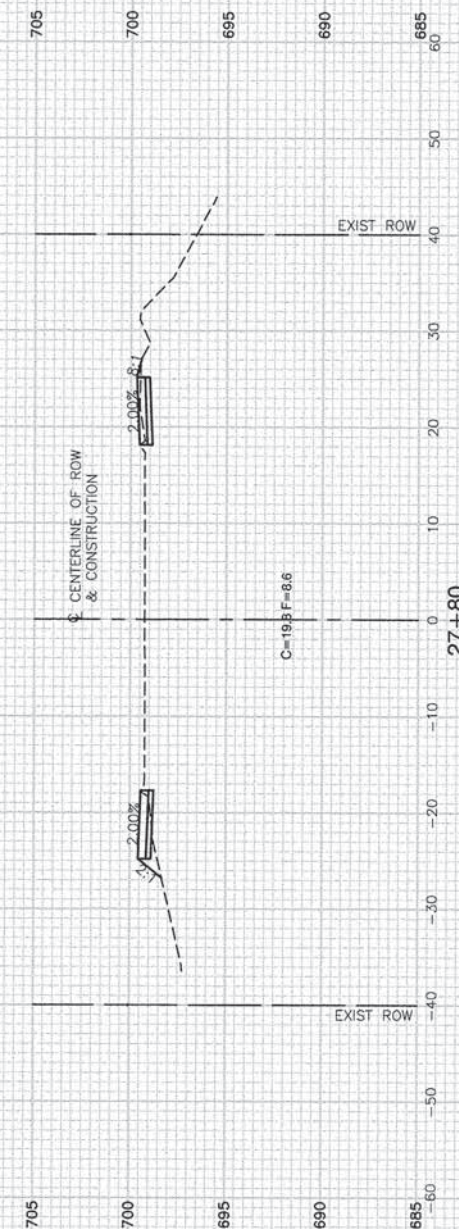
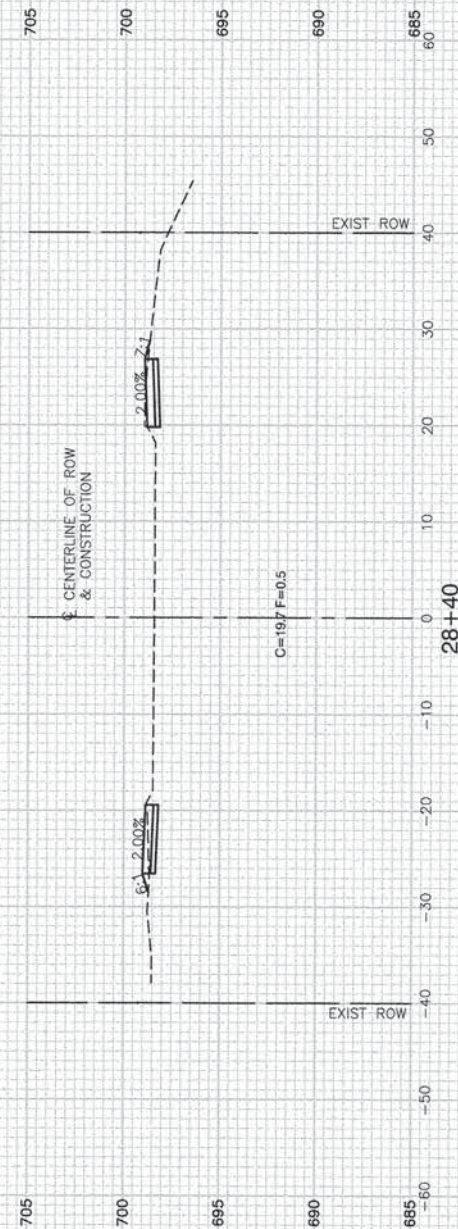
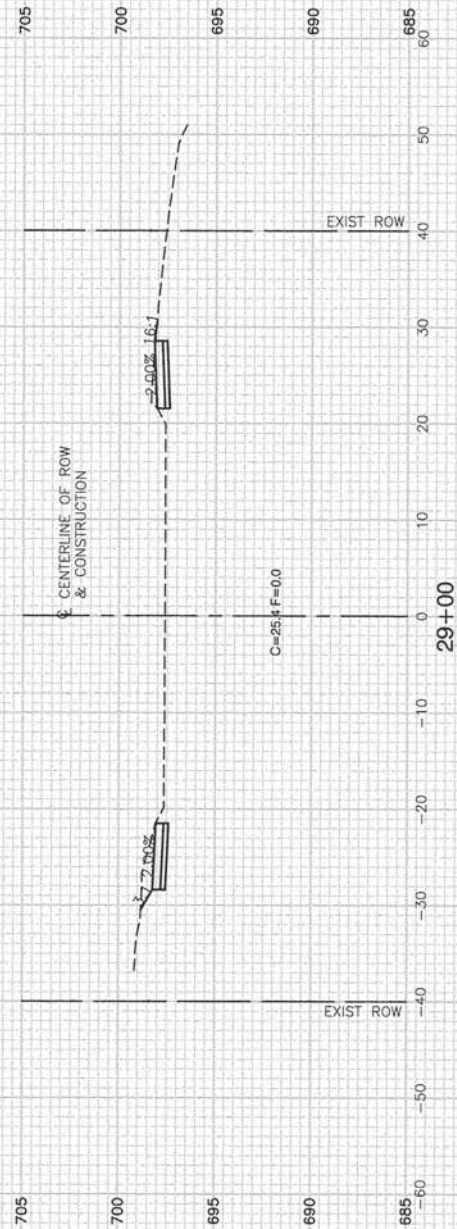
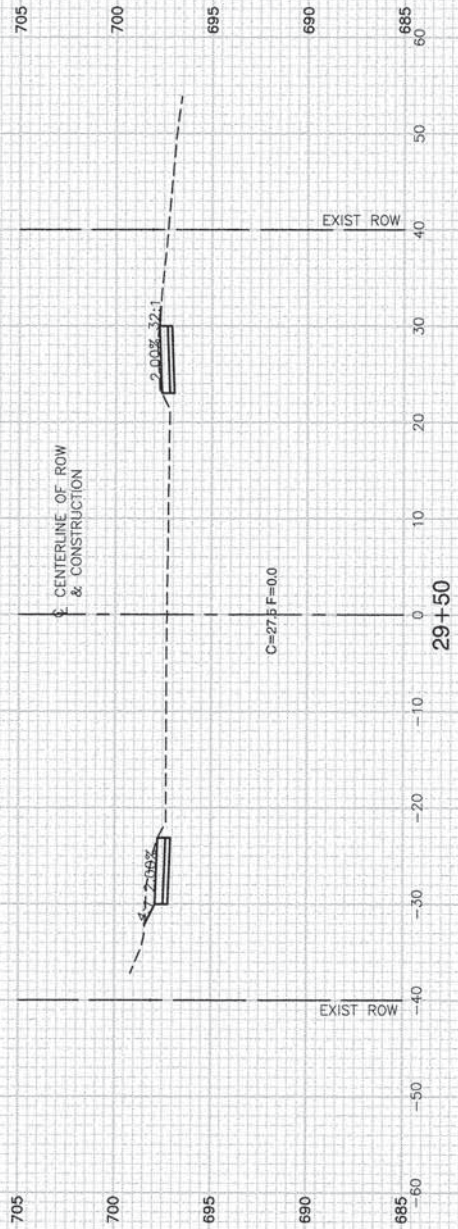
FILE NAME = 13682-XSCT-01 - IDOT P06
 USER NAME =
 PLOT SCALE =
 PLOT DATE = 12-01-14

DESIGNED - ERR	REVISED -
CHECKED - ERR	REVISED -
DRAWN - MED	REVISED -
CHECKED - AG	REVISED -

STATE OF ILLINOIS
 DEPARTMENT OF TRANSPORTATION

MATTESON AVENUE
 SAFE ROUTES TO SCHOOL
 CROSS SECTIONS
 SCALE: 1"=10'
 SHEET NO. 14 OF 16 SHEETS
 STA. TO STA.

F.A. RTE.	SECTION	COUNTY	TOTAL SHEETS	SHEET NO.
	12-00061-00-SG	COOK	16	14
FED. ROAD DIST. NO.		ILLINOIS	FED. AID PROJECT SRTS-4009(217)	
CONTRACT NO. 61B28				



FILE NAME = 13882-XSCT-01 - IDOT P07

USER NAME =
 PLOT SCALE =
 PLOT DATE = 12-01-14

DESIGNED -- ERR
 CHECKED -- ERR
 DRAWN -- MED
 CHECKED -- AG

REVISED --
 REVISED --
 REVISED --
 REVISED --

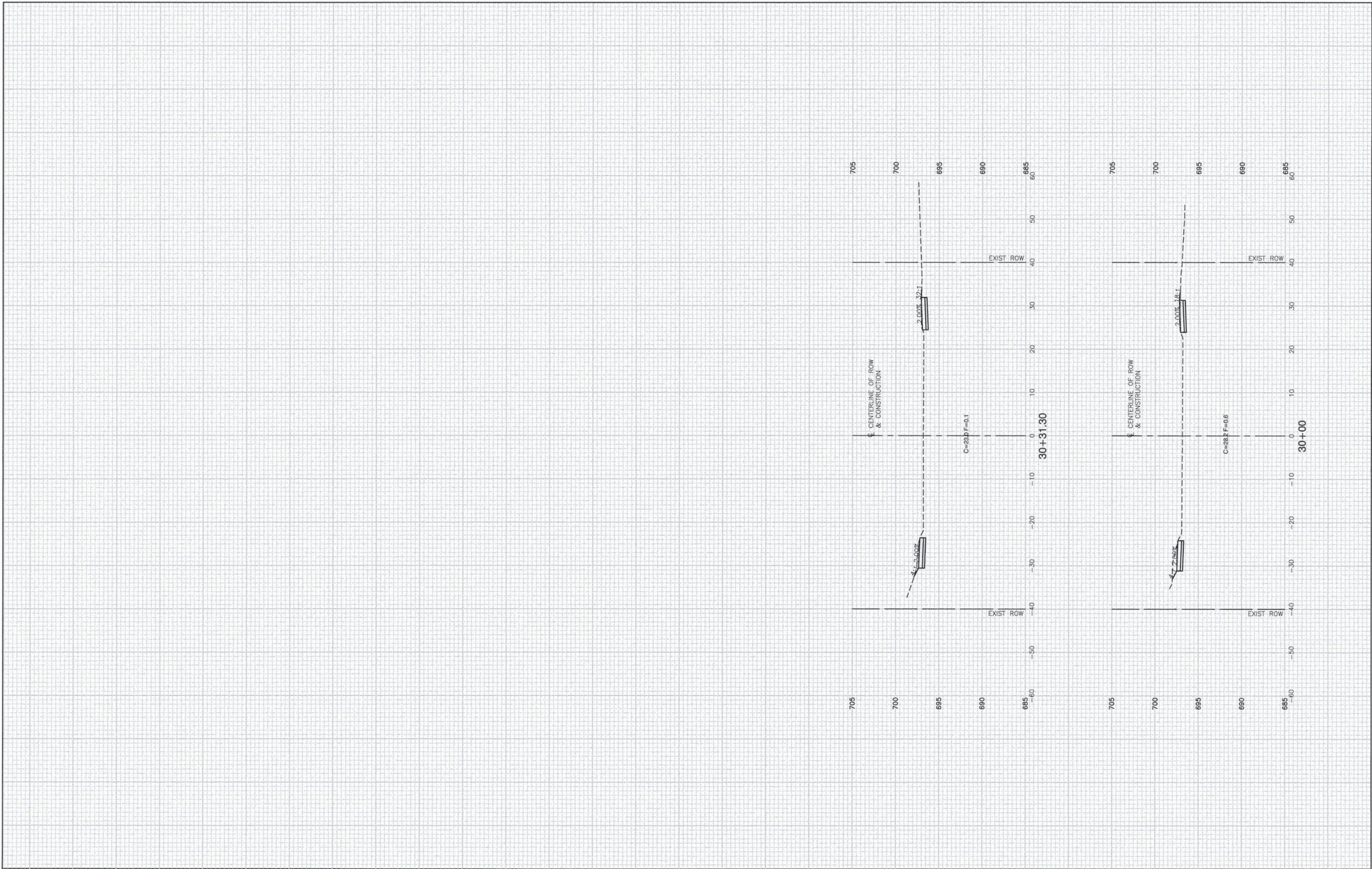
STATE OF ILLINOIS
 DEPARTMENT OF TRANSPORTATION

SCALE: 1"=10'

SHEET NO. 15 OF 16 SHEETS STA. TO STA.

MATTESON AVENUE
 SAFE ROUTES TO SCHOOL
 CROSS SECTIONS

F.A. RTE.	SECTION	COUNTY	TOTAL SHEETS	SHEET NO.
	12-0061-00-SG	COOK	16	15
CONTRACT NO. 61B28				
FED. ROAD DIST. NO. ILLINOIS FED. AID PROJECT SRTS-4009(217)				



FILE NAME = 13682-XSCT-01 - IDOT P08
 USER NAME =
 PLOT SCALE =
 PLOT DATE = 12-01-14

DESIGNED — ERR	REVISED —
CHECKED — ERR	REVISED —
DRAWN — MED	REVISED —
CHECKED — AG	REVISED —

**STATE OF ILLINOIS
 DEPARTMENT OF TRANSPORTATION**

**MATTESON AVENUE
 SAFE ROUTES TO SCHOOL
 CROSS SECTIONS**

SCALE: 1"=10' SHEET NO. 16 OF 16 SHEETS STA. TO STA.

F.A. RTE.	SECTION	COUNTY	TOTAL SHEETS	SHEET NO.
	12-00061-00-SG	COOK	16	16
CONTRACT NO. 61B28				
FED. ROAD DIST. NO.	ILLINOIS	FED. AID PROJECT	SRTS-4009(217)	