

05/14/02 PM 01:11:01 10017.GD:Sheet 1 of 2

DESIGN AND PLAN PREPARATION ENGINEER : K. ENG / M. GOMEZ (847) 705 - 4432

STATE OF ILLINOIS
DEPARTMENT OF TRANSPORTATION
DIVISION OF HIGHWAYS

PROPOSED
HIGHWAY PLANS

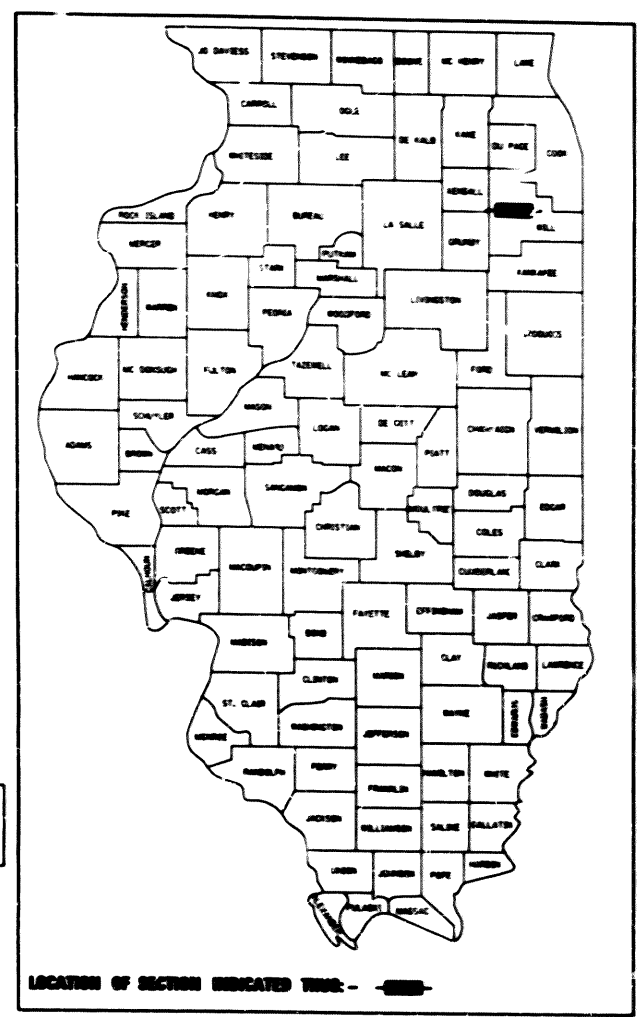
F.A.I. ROUTE 80 (INTERSTATE 80)
GRUNDY COUNTY LINE TO ROWELL STREET
RESURFACING (MAINT.) & BRIDGE REPAIRS
SECTION (99 [1,2,3,4] & 4-1) RS-7
C-91-507-00
WILL COUNTY

F.A.I. RTE.	SECTION	COUNTY	TOTAL SHEETS	SHEET NO.
80		WILL	82	1

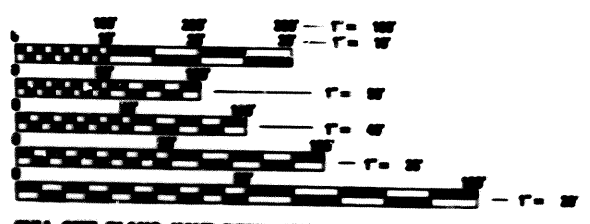
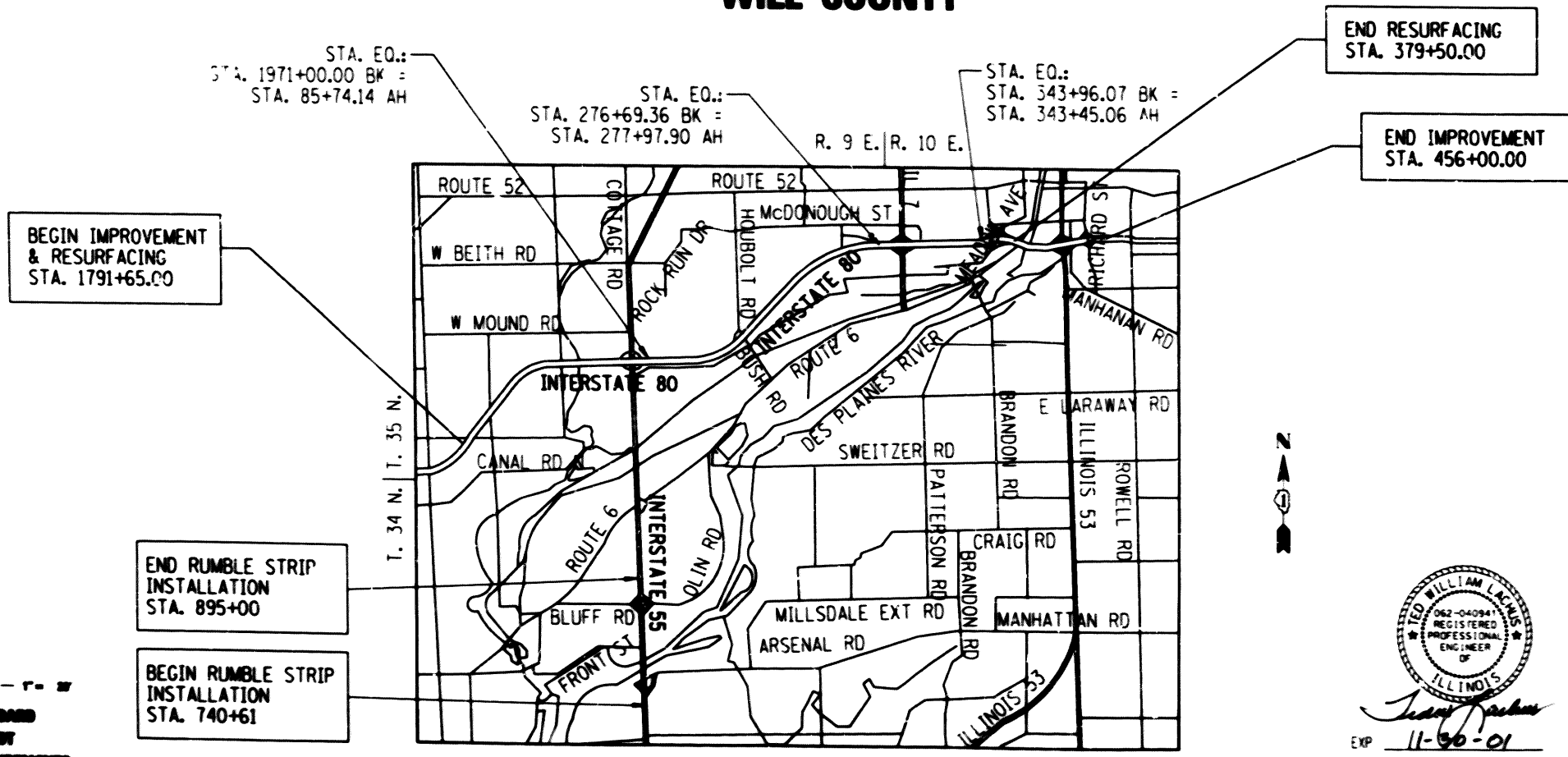
99 (1,2,3,4 & 4-1) RS-7

D-91-507-00

FOR INDEX OF SHEETS, SEE SHEET NO. 2



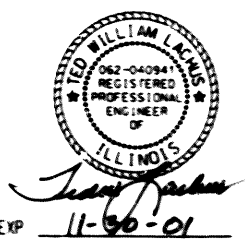
THIS IMPROVEMENT IS LOCATED WITHIN
ROCKDALE AND JOLIET



ALL SHEET PLANS HAVE BEEN PREPARED USING STANDARD ENGINEERING SCALES. REDUCED SIZE PLANS WILL NOT CONFORM TO STANDARD SCALING. IN MAKING MEASUREMENTS ON REDUCED PLANS, THE ABOVE SCALES MAY BE USED.

SCALE:
JOINT UTILITY LOCATION INFORMATION FOR EXISTENCE
1-800-888-0828

CONTRACT NO. 62002



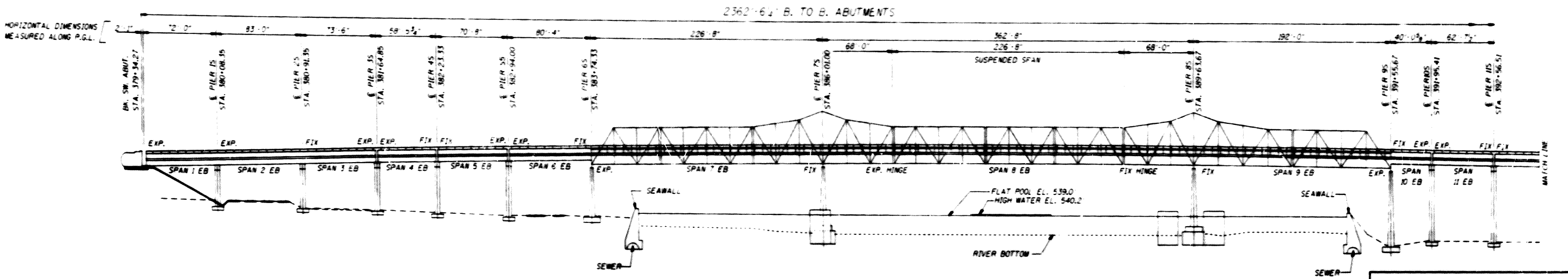
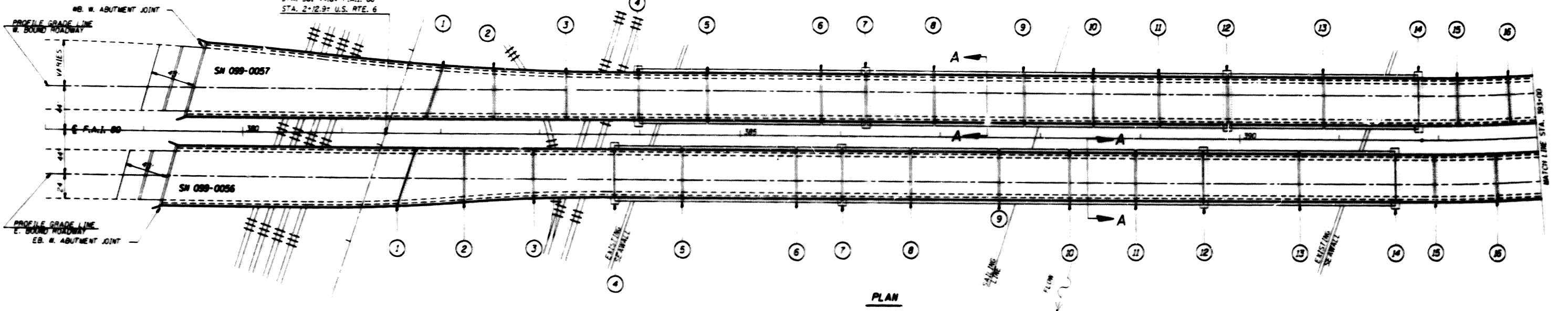
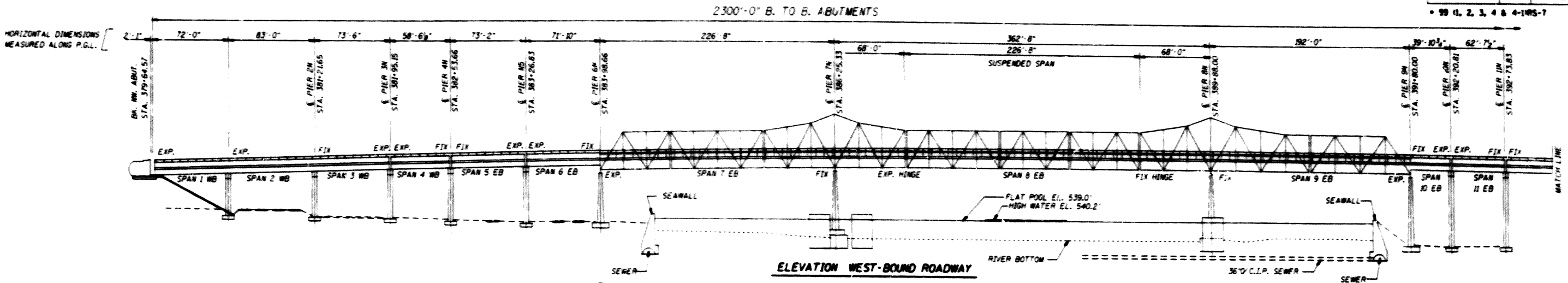
STATE OF ILLINOIS
DEPARTMENT OF TRANSPORTATION
DIVISION OF HIGHWAYS

SUBMITTED: April 12, 2001
 District Engineer: [Signature]
 May 11, 2001
 District Engineer: [Signature]
 May 11, 2001
 District Engineer: [Signature]

PRINTED BY THE AUTHORITY
OF THE STATE OF ILLINOIS

PATRICK ENGINEERING, INC.
TED R. LACHUS, P.E.
062-040941
4-10-01
DATE:

NO.	DATE	BY	CHKD.	APP.
80		WILL	82	63
STA.		TO STA.		
99 (1, 2, 3, 4 & 4-1WS-7				

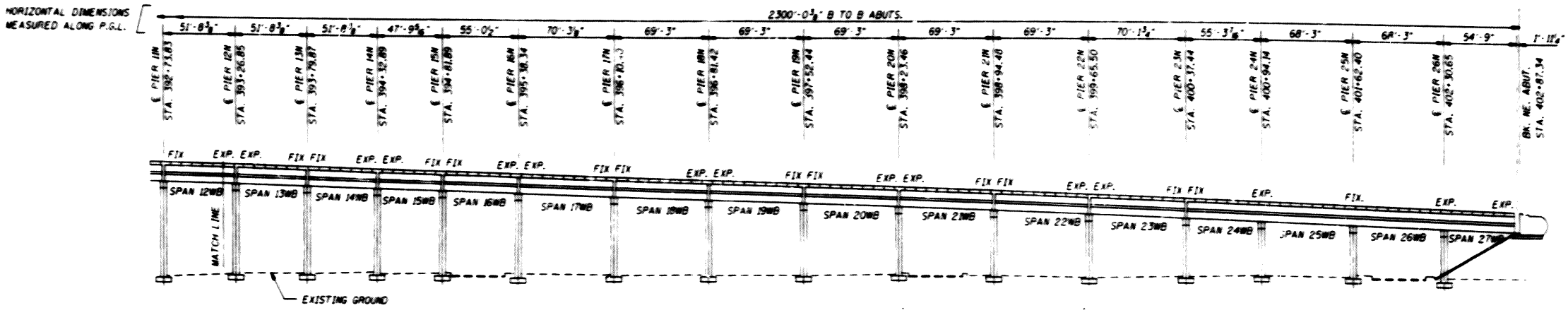


ILLINOIS DEPARTMENT OF TRANSPORTATION
 INT. RTE. 80 OVER
 DES PLAINES RIVER
 SN 099-0056
 SN 099-0057

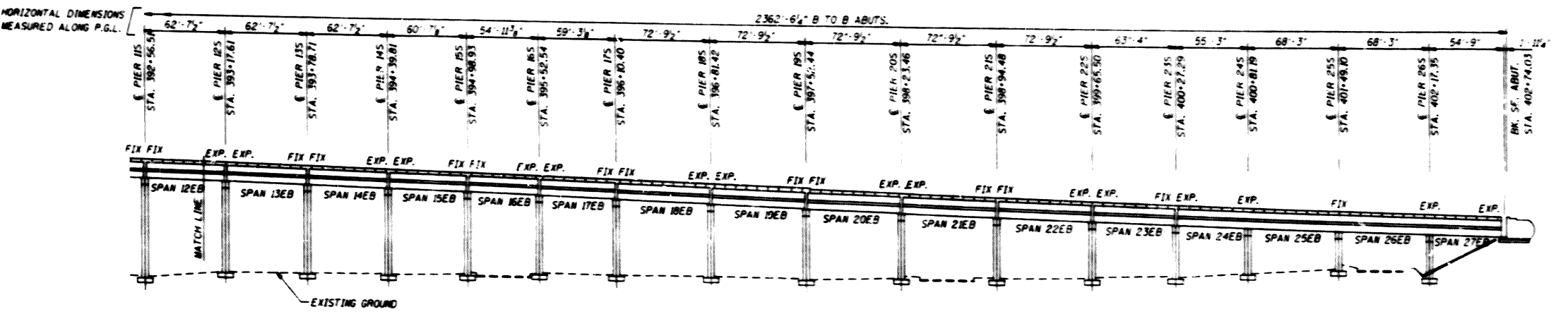
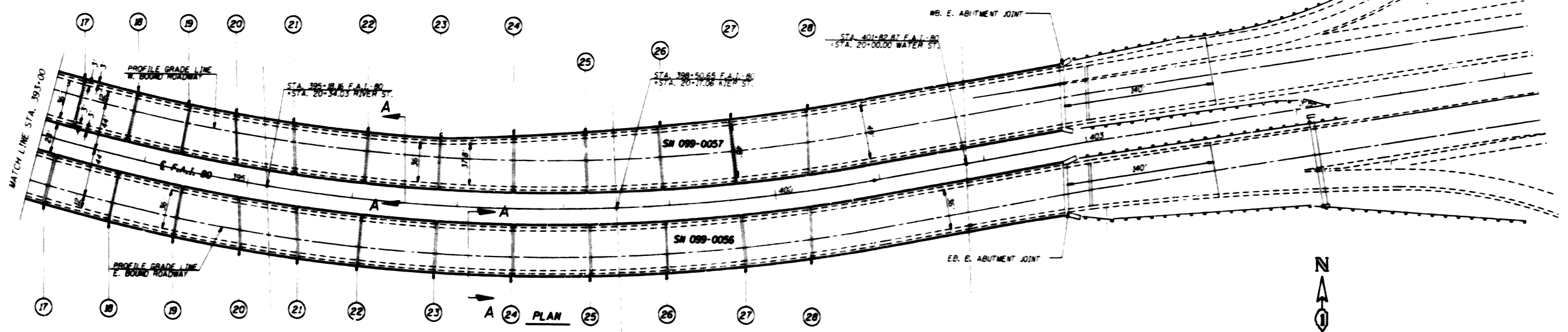
REVISIONS	
NO.	DATE

SCALE: VERT. 1"=50'
 HORIZ. 1"=50'

DRAWN BY: CADD
 CHECKED BY: JMS



ELEVATION WEST-BOUND ROADWAY



ELEVATION EAST-BOUND ROADWAY

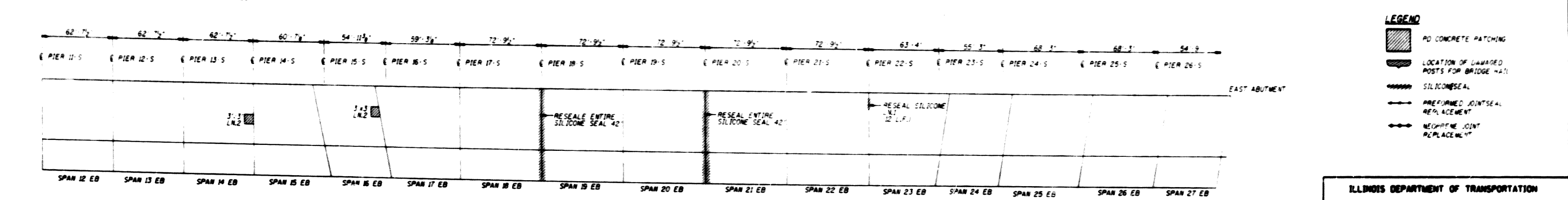
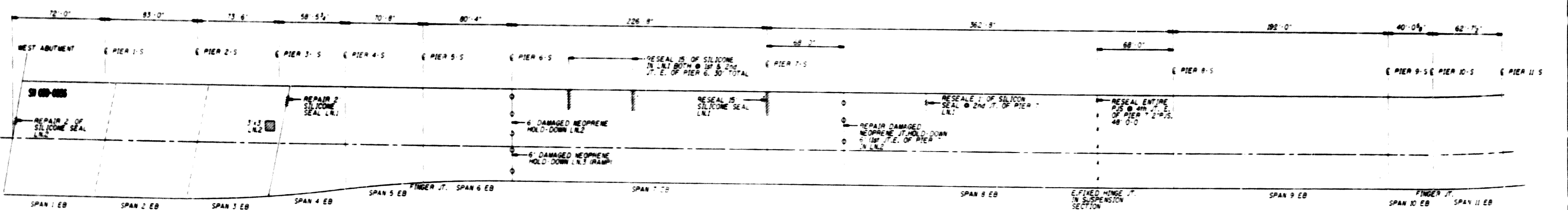
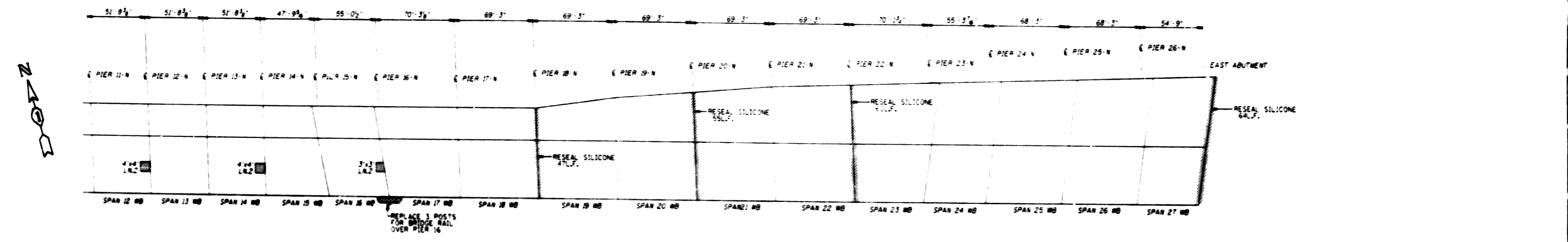
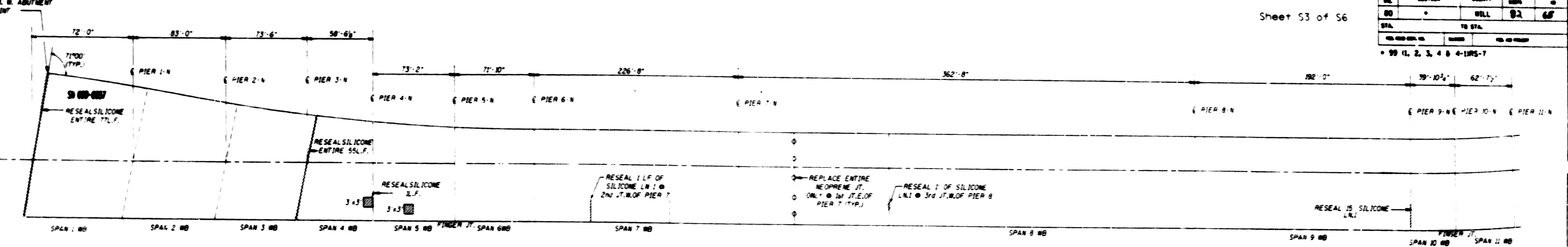
REVISIONS	
NAME	DATE

ILLINOIS DEPARTMENT OF TRANSPORTATION
 INT. RTE. 80 OVER
 DES PLAINES RIVER
 SN 099-0056
 SN 099-0057

SCALE: VERT. 1"=30'
 HORIZ. 1"=50'

DRAWN BY CADD

NO.	SECTION	COUNTY	DATE	BY
80		DELL	82	68
STA.	TO STA.			
99+00	99+00			
• 99 (1, 2, 3, 4 & 4-10RS-7				



- LEGEND**
- PD CONCRETE PATCHING
 - LOCATION OF DAMAGED POSTS FOR BRIDGE RAIL
 - SILICONE SEAL
 - PREFORMED JOINT SEAL REPLACEMENT
 - NEOPRENE JOINT REPLACEMENT

REVISIONS	
NO.	DATE

ILLINOIS DEPARTMENT OF TRANSPORTATION
**INT. RTE. 80 OVER
 DES PLAINES RIVER
 DECK SLAB REPAIRS**
 SN 099-0056
 SN 099-0057
 SCALE: VERT. 1"=50'
 HORIZ. 1"=80'
 DRAWN BY CAOD

SECTION	COUNTY	DATE	REV.
80	WILL	82	66
STA.	TO STA.		
REL. TO PROJ. NO.	PLAN	NO. OF SHEETS	

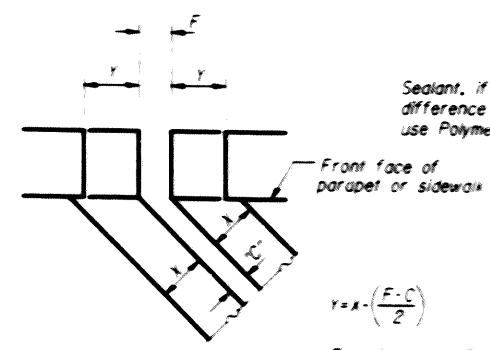
• 99 (1, 2, 3, 4 & 4-1MS-7

Joint Size	"C" at 50°F	"D" at 50°F
2"	2"	1 1/2" Min.
2 1/2"	2 1/2"	1 3/4" Min.
4"	3"	2 1/2" Min.

INSTALLATION NOTES

- Install continuous seal in roadway, parapet, curb, and sidewalk.
- Install anchor blocks as indicated.

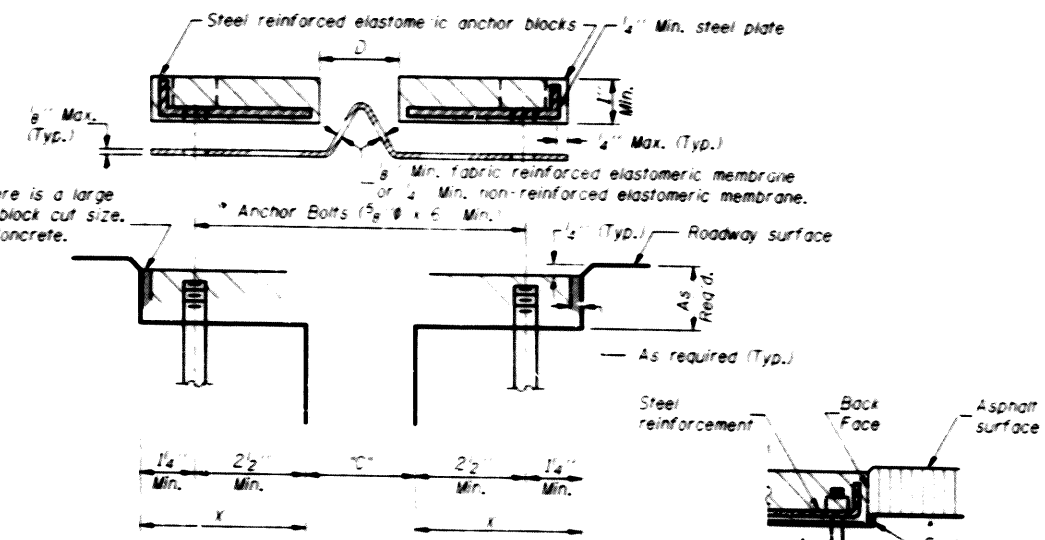
NOTE A: Maximum spacing of anchor bolts shall be 12" center.



FORMING BLOCKOUT SKETCH

$$Y = X \cdot \left(\frac{F-C}{2} \right)$$

For dimension "F" see sheet # 2



CROSS SECTION

ANCHOR BLOCK WITH ASPHALT SURFACE

GENERAL NOTES

Continuous Seal Neoprene Expansion Joint shall consist of molded anchor blocks of elastomer and steel, field assembled over continuous lengths of elastomeric membrane.

The elastomeric membrane shall be premolded with a single or a double upward convolution that will have a "memory" to return to its molded position upon joint closure.

The convolution length shall be such that the extended length will not be greater than the manufactured length when the joint is fully expanded in its design range and will not protrude above the anchor blocks when the joint is fully compressed.

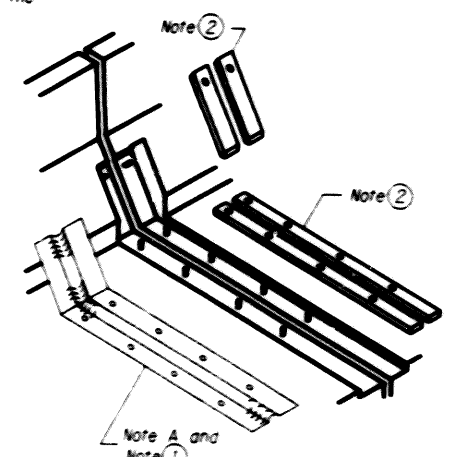
The parapet and roadway membrane shall be made continuous by an approved vulcanizing process. Lapping will not be permitted.

* Epoxy grout 5/8" threaded studs in accordance with article 584 of the Standard Specifications space to miss existing studs.

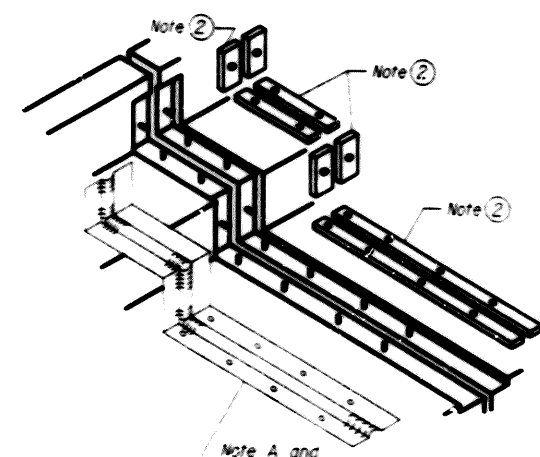
Removal of the existing neoprene expansion joint and studs is included in the cost of "NEOPRENE EXPANSION JOINT" of the size specified.

SKUEW LIMITATIONS

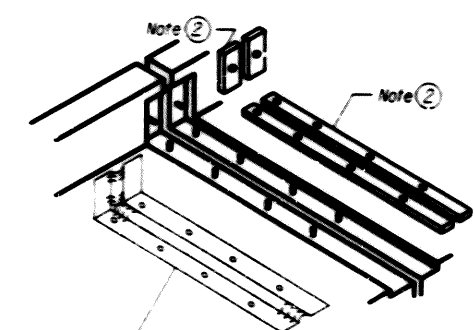
The details of the anchor blocks and the elastomeric membrane in the parapet, as shown, are for up to 50° skews. For skews greater than 50°, the anchor blocks and the elastomeric membrane, installed according to dimension "D", might require modifications to insure a minimum clearance of 1/2" from centerline of anchor studs to edge of parapet opening. The anchor blocks and the elastomeric membrane shall also be installed at the top of the parapet with the anchor studs spaced at 12" cts.



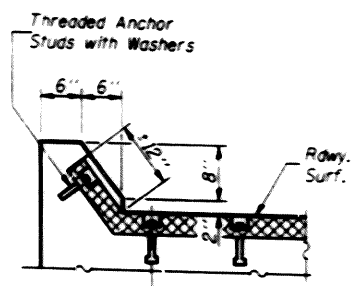
AT PARAPET



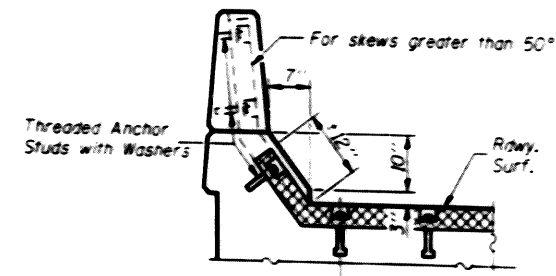
AT SIDEWALK OR MEDIAN



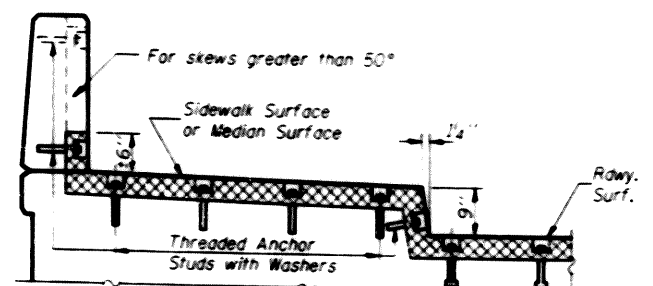
AT WALL



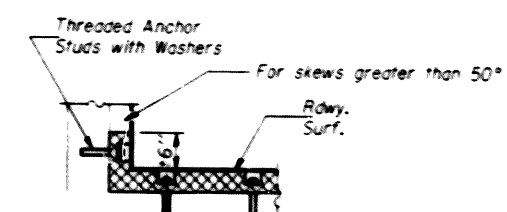
AT CURB



AT PARAPET



AT SIDEWALK OR MEDIAN TYPICAL END TREATMENTS



AT WALL

REVISIONS	
NO.	DATE

ILLINOIS DEPARTMENT OF TRANSPORTATION

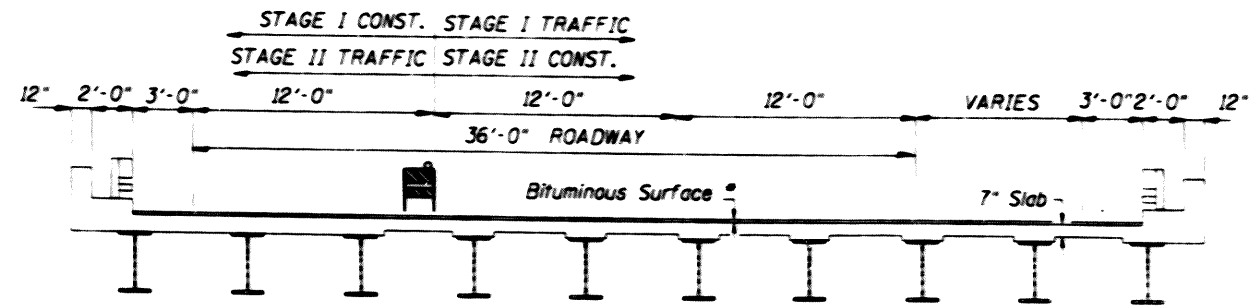
**INT. RTE. 80 OVER
DES PLAINES RIVER
SN 099-0056
SN 099-0057**

SCALE: NONE
DATE: 8/2/82

DRAWN BY CADD
CHECKED BY TJS

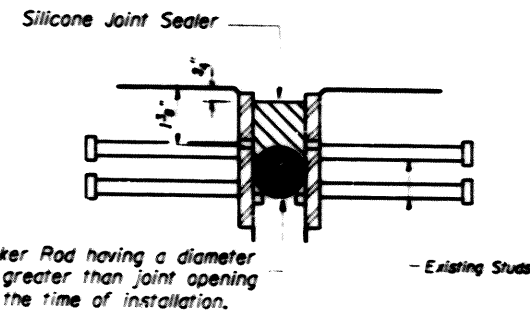
SECTION	COUNTY	DATE	NO.
80	WILL	8a	67
STA.	TO STA.		
NO. AND DATE	BY	NO. AND DATE	

• 99 (1, 2, 3, 4 & 4-1)RS-7



SECTION A-A

* The Bituminous Surface is 2" for Spans 1 to 9 and varies from 1 3/4" to 7" (Transversely) for Spans 10 to 27.



SILICONE JOINT SEAL DETAIL

GENERAL NOTES

PLAN DIMENSIONS AND DETAILS RELATIVE TO EXISTING STRUCTURES HAVE BEEN TAKEN FROM EXISTING PLANS AND ARE SUBJECT TO NOMINAL CONSTRUCTION VARIATIONS. IT SHALL BE THE CONTRACTOR'S RESPONSIBILITY TO VERIFY SUCH DIMENSION AND DETAILS IN THE FIELD AND MAKE NECESSARY APPROVED ADJUSTMENTS PRIOR TO CONSTRUCTION OR ORDERING OF MATERIALS. SUCH VARIATION SHALL NOT BE CAUSE FOR ADDITIONAL COMPENSATION FOR A CHANGE IN THE SCOPE. HOWEVER, THE CONTRACTOR WILL BE PAID FOR THE QUANTITY ACTUALLY FURNISHED AT THE UNIT BID PRICE OR THE WORK.

THE CONTRACTOR MUST USE EXTREME CARE DURING CONCRETE REMOVALS AS NOT TO NECK, CUT, OR DAMAGE ANY EXISTING REINFORCING TO BE INCORPORATED INTO THE NEW CONSTRUCTION. ANY DAMAGE SHALL BE REPAIRED AT CONTRACTOR'S EXPENSE.

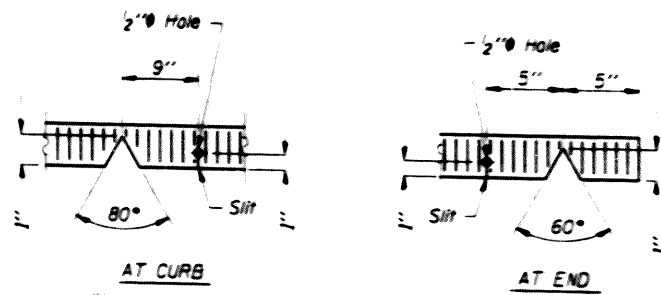
AREAS OF DECK REPAIRS ARE ESTIMATED. THE ACTUAL TYPE AND LOCATION OF THE DECK REPAIRS ARE TO BE DETERMINED BY THE ENGINEER DURING CONSTRUCTION.

THE ENGINEER SHALL MARK THE LOCATIONS OF THE REPAIRS ON THE AS-BUILT PLANS.

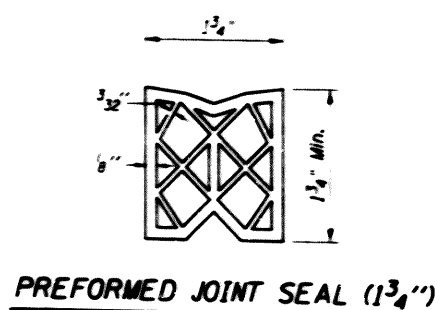
DATE OF SURVEY 10/2000

TOTAL BILL OF MATERIALS

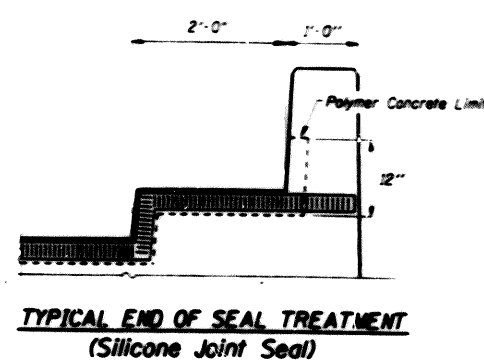
ITEM	UNIT	QUANTITY
Silicone Joint Sealer	Foot	544
Deck Slab Repair (Partial)	Sq. Yd.	335
Preformed Joint Seal, 1 3/4"	Foot	48
Neoprene Expansion Joint, 4"	Foot	48



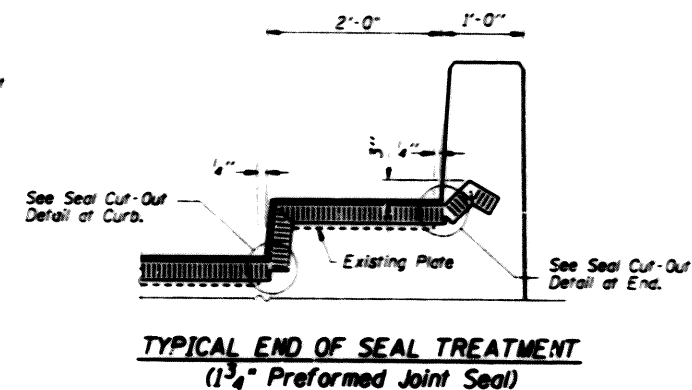
SEAL CUT-OUT DETAIL



PREFORMED JOINT SEAL (1 3/4")



TYPICAL END OF SEAL TREATMENT (Silicone Joint Seal)



TYPICAL END OF SEAL TREATMENT (1 3/4" Preformed Joint Seal)

REVISIONS	
NAME	DATE

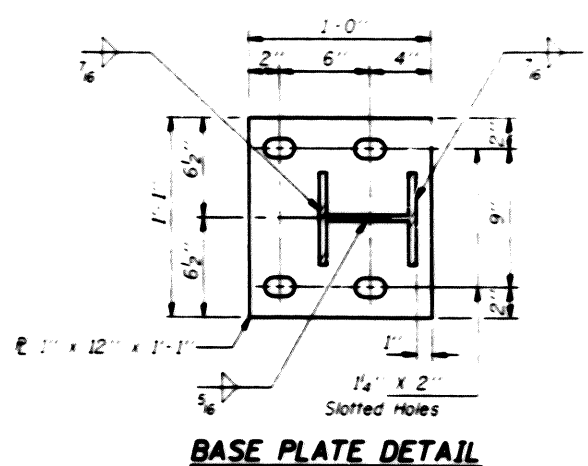
ILLINOIS DEPARTMENT OF TRANSPORTATION
 INT. RTE. 80 OVER
 DES PLAINES RIVER
 SN 099-0056
 SN 099-0057

SCALE: NONE
 DATE: 10/00

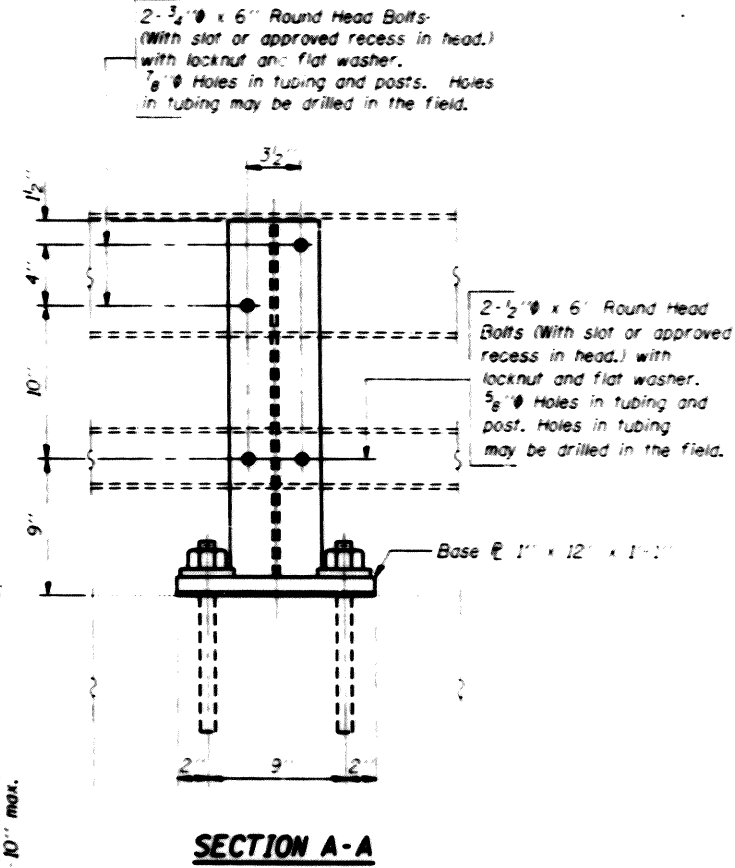
DRAWN BY CADD
 CHECKED BY TMS

SECTION	QUANTITY	UNIT	NO.
342	•	LAKE	82 68
STA.	TO STA.		

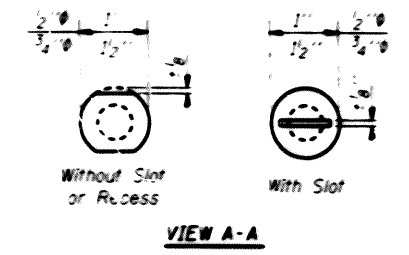
(G&I211-RS-1)



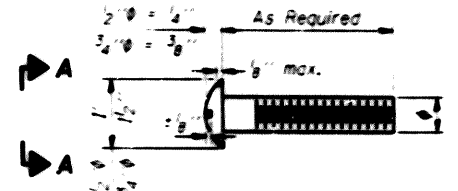
BASE PLATE DETAIL



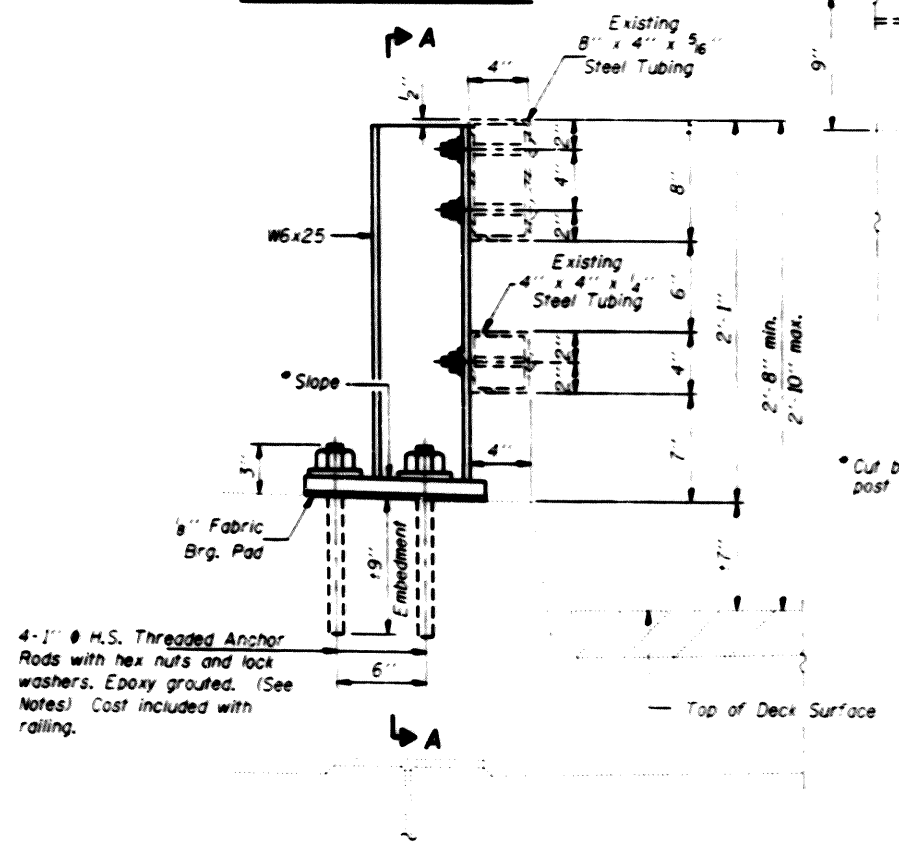
SECTION A-A



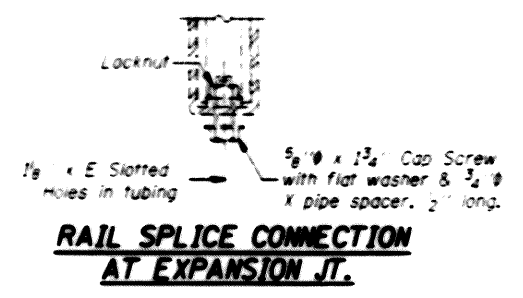
VIEW A-A



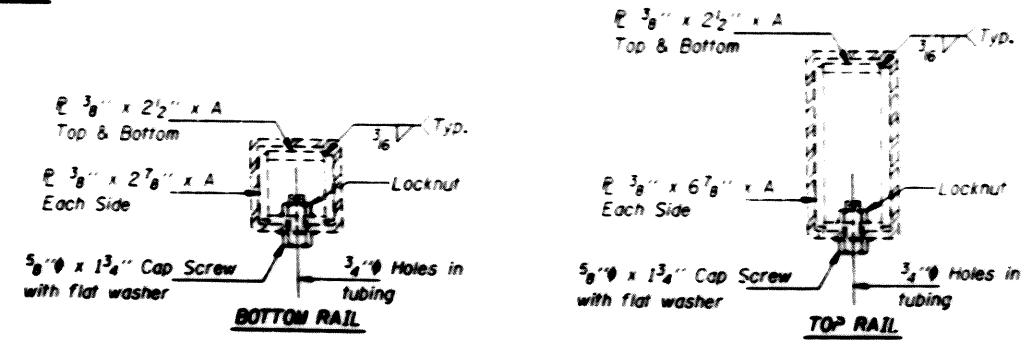
DETAIL OF 1/2" & 3/4" ROUND HEAD BOLTS



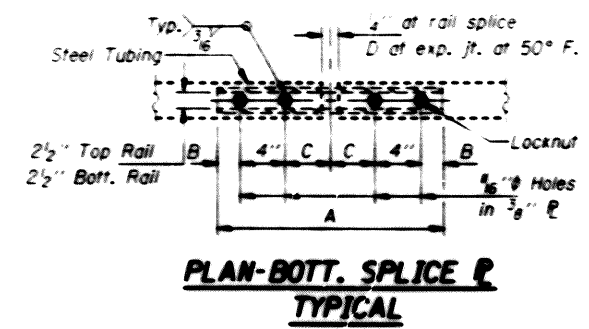
SECTION AT RAIL POST



RAIL SPLICE CONNECTION AT EXPANSION JT.



SECTIONS AT EXISTING RAIL SPLICE



PLAN-BOTT. SPLICE TYPICAL

BILL OF MATERIAL

Item	Unit	Quantity
Steel Bridge Rail Posts	Each	3

ILLINOIS DEPARTMENT OF TRANSPORTATION
 INT. RTE. 80 OVER
 DES PLAINES RIVER
 STEEL BRIDGE RAIL POSTS
 TYPE 2399
 SN 099-0056
 SN 099-0057

REVISIONS	DATE

SCALE: NONE
 DRAWN BY CAD