

103

04-24-2020 LETTING ITEM 103

STATE OF ILLINOIS  
DEPARTMENT OF TRANSPORTATION

F.A.P. RTE.	SECTION	COUNTY	TOTAL SHEETS	SHEET NO.
613	7 RS-2 & 8 RS-5	BUREAU	12	1
		ILLINOIS	CONTRACT NO. 66968	

**INDEX OF SHEETS**

- 1 COVER SHEET
- 2 GENERAL NOTES
- 3-4 SUMMARY OF QUANTITIES
- 5 TYPICAL SECTION
- 6-8 SCHEDULES
- 9 LINE DIAGRAM & PSM TABLE
- 10-12 DETAILS

**LIST OF ILLINOIS DOT HIGHWAY STANDARDS**

- 000001-07 STANDARD SYMBOLS, ABBREVIATIONS AND PATTERNS
- 001006 DECIMAL OF AN INCH AND OF A FOOT
- 442201-03 CLASS C AND D PATCHES
- 604036-03 GRATE, TYPE B
- 701001-02 OFF-ROAD OPERATIONS 2L, 2W, MORE THAN 15' (4.5 m) AWAY
- 701006-05 OFF-ROAD OPERATIONS 2L, 2W, 15' (4.5 m) TO 24" (600 mm) FROM PAVEMENT EDGE
- 701306-04 LANE CLOSURE, 2L, 2W, SLOW MOVING OPERATIONS DAY ONLY, FOR SPEEDS ≥ 45 MPH
- 701311-03 LANE CLOSURE, 2L, 2W, MOVING OPERATIONS - DAY ONLY
- 701901-08 TRAFFIC CONTROL DEVICES
- 780001-05 TYPICAL PAVEMENT MARKINGS
- 781001-04 TYPICAL APPLICATIONS RAISED REFLECTIVE PAVEMENT MARKERS

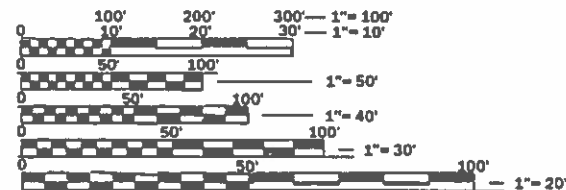
# PROPOSED HIGHWAY PLANS

FAP ROUTE 613 (US 34)  
SECTION 7 RS-2 & 8 RS-5  
PROJECT STP-3SBM(620)  
3P MILLING & RS  
BUREAU COUNTY

C-93-116-09



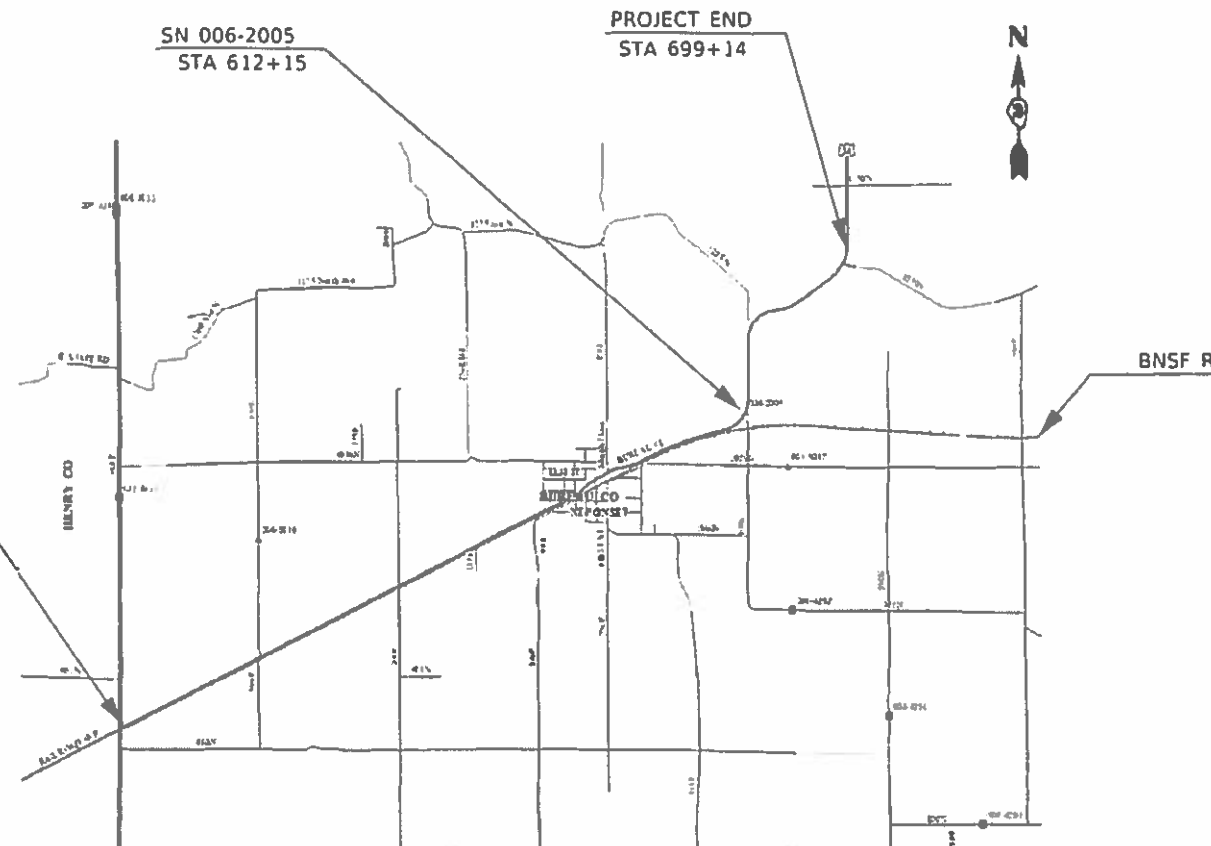
FUNCTIONAL CLASSIFICATION  
RURAL MINOR ARTERIAL  
2019 ADT = 2200  
PV=95.5% SU=2.7% MU=1.8%



FULL SIZE PLANS HAVE BEEN PREPARED USING STANDARD ENGINEERING SCALES. REDUCED SIZED PLANS WILL NOT CONFORM TO STANDARD SCALES. IN MAKING MEASUREMENTS ON REDUCED PLANS, THE ABOVE SCALES MAY BE USED.

J.U.L.I.E.  
JOINT UTILITY LOCATION INFORMATION FOR EXCAVATION  
1-800-892-0123  
OR 811

PROJECT ENGINEER: JOE KANNEL, P.E.  
UNIT CHIEF: ARLENE OTERO-FEBUS  
DISTRICT 3 NO. (815) 434-6131  
CONTRACT NO. 66968



GROSS LENGTH = 35300 FT. = 6.7 MILE  
NET LENGTH = 35300 FT. = 6.7 MILE

STATE OF ILLINOIS  
DEPARTMENT OF TRANSPORTATION

SUBMITTED *February 13, 2020*

*[Signature]*  
REGIONAL ENGINEER

*[Signature]*  
ENGINEER OF DESIGN AND ENVIRONMENT

*[Signature]*  
DIRECTOR OF HIGHWAYS PROJECT IMPLEMENTATION

PRINTED BY THE AUTHORITY  
OF THE STATE OF ILLINOIS

**GENERAL NOTES**

THE HMA SURFACE OF ALL MAILBOX TURNOUTS, PRIVATE ENTRANCES, COMMERCIAL ENTRANCES, AND SIDE ROADS SHALL BE MADE NEATLY, IN A WORKMANLIKE MANNER, AND SHALL ACCURATELY CONFORM TO THE SHAPES AND DIMENSIONS SHOWN ON THE PLAN DETAILS. IF REQUIRED BY THE ENGINEER, THE CONTRACTOR SHALL SAW CUT THE HMA SURFACE TO CONFORM TO THE SHAPES AND DIMENSIONS SHOWN ON THE PLAN DETAILS. THIS WORK WILL BE INCLUDED IN THE COST OF THE HMA SURFACE.

ALL EXCAVATED MATERIAL, WHICH INCLUDES DIGGING OR GRADING OF ANY SOIL OR FILL MATERIAL, WITH THE EXCEPTION OF AGGREGATE FILLS, MUST BE INCORPORATED WITHIN THE IDOT RIGHT OF WAY DUE TO ENVIRONMENTAL DOCUMENTATION REQUIREMENTS.

ON EXISTING PAVEMENT WHICH MAY BE SUPERELEVATED, THE NEW HMA PAVEMENT SHALL BE BUILT WITH THE SAME SUPERELEVATION UNLESS NEW SUPERELEVATION RATES ARE GIVEN ON THE PLANS.

THE FOLLOWING RATES OF APPLICATION HAVE BEEN USED IN CALCULATING PLAN QUANTITIES:

GRANULAR MATERIALS	2.05	TONS / CU YD
HMA RESURFACING	112	LBS / SQ YD / IN
SHORT TERM PAVEMENT MARKING	10	FT / 100 FT OF APPLICATION
MIX FOR CRACKS, JTS & FLGWYS	0.0003	TONS / SQ YD
BINDER (HAND METHOD)	0.0005	TONS / SQ YD

MEMBERS OF JULIE KNOWN TO BE WITHIN THE LIMITS OF THE IMPROVEMENT ARE: AMEREN IP, MEDIACOM, COMCAST, FRONTIER, GENESCO TELEPHONE AND THE VILLAGE OF NEPONSET.

ALL DAMAGE TO DEPARTMENT OWNED UNDERGROUND FACILITIES CAUSED BY THE CONTRACTOR SHALL BE REPAIRED.

**COMMITMENTS**

HMA MIXTURE REQUIREMENT TABLE			
LOCATION(S):	ENTIRE PROJECT	ENTIRE PROJECT	ENTIRE PROJECT
MIXTURE USE(S):	HMA SURFACE COURSE	HMA BINDER COURSE	INCIDENTAL HMA
BINDER GRADE (PG):	PG 64-22	PG 64-22	PG 64-22
DESIGN AIR VOIDS:	4.0% @ N50	4.0% @ N50	4.0% @ N50
MIXTURE COMPOSITION: (MIXTURE GRADATION)	IL-9.5	IL-9.5	IL 9.5
FRICITION AGGREGATE:	MICTURE C		MIXTURE C
MIXTURE WEIGHT:	112.0 LB/SY/IN	112.0 LB/SY/IN	112.0 LB/SY/IN
QUALITY MANAGEMENT PROGRAM:	QCP	QCP	QC/QA
SUBLOT SIZE:	1000 TONS	1000 TONS	N/A
DENSITY TEST METHOD:	CORES	CORES	SATISFACTION OF THE ENGINEER

STATE OF ILLINOIS  
DEPARTMENT OF TRANSPORTATION  
DISTRICT THREE  
AS BUILT INFORMATION

\_\_\_\_\_  
SUPERVISING CONSTRUCTION FIELD ENGINEER

\_\_\_\_\_  
RESIDENT ENGINEER / TECHNICIAN

START & END DATES  
OF CONSTRUCTION:

INSPECTORS:

STATE OF ILLINOIS  
DEPARTMENT OF TRANSPORTATION  
DISTRICT THREE

PREPARED BY: Dave Brown  
DISTRICT STUDIES & PLANS ENGINEER

DATE: 2/14/2020

EXAMINED BY: Kyle Valby  
DISTRICT CONSTRUCTION ENGINEER  
Michael A. Short  
DISTRICT MATERIALS ENGINEER  
Carroll  
DISTRICT OPERATIONS ENGINEER

FILE NAME *	USER NAME = NOLASCOCJ	DESIGNED -	REVISED -
pcv\planroom.doe\illinois.gov\PWIDOT\Documents\1007	Office\Dist\3\Projects\0368968\CAD\Info\CAD\sheet\0368968	DRAMN	REVISED -
Default	PLOT SCALE = 100.0000 / 1 in.	CHECKED -	REVISED -
	PLOT DATE = 2/13/2020	DATE -	REVISED -

STATE OF ILLINOIS  
DEPARTMENT OF TRANSPORTATION

**GENERAL NOTES**

SCALE: SHEET OF SHEETS STA. TO STA.

F.A.P. RTE.	SECTION	COUNTY	TOTAL SHEETS	SHEET NO.
613	7 RS-2 & 8 RS-5	BUREAU	12	2
CONTRACT NO. 66968				
ILLINOIS FED. AID PROJECT				

CODE NO.	ITEM	UNIT	TOTAL QUANTITY	CONSTR. CODE	
				80% FED 20% STATE	
				FUND TYPE	FEDERAL
				ROADWAY	0005
				RURAL	
40600290	BITUMINOUS MATERIALS (TACK COAT)	POUND	74546		74546
40600400	MIXTURE FOR CRACKS, JOINTS, AND FLANGEWAYS	TON	32		32
40600900	HOT-MIX ASPHALT BINDER COURSE (HAND METHOD), N50	TON	53.1		53.1
40600990	TEMPORARY RAMP	SQ YD	619		619
40602978	HOT-MIX ASPHALT BINDER COURSE, 1L- 9.5, N50	TON	11921		11921
40604050	HOT-MIX ASPHALT SURFACE COURSE, 1L-9.5, MIX "C", N50	TON	10430		10430
40800050	INCIDENTAL HOT-MIX ASPHALT SURFACING	TON	915		915
44000164	HOT-MIX ASPHALT SURFACE REMOVAL, 3 3/4"	SQ YD	106435		106435
44201769	CLASS D PATCHES, TYPE III, 10 INCH	SQ YD	46		46
48102100	AGGREGATE WEDGE SHOULDER, TYPE B	TON	1329		1329
60236200	INLETS, TYPE A, TYPE 8 GRATE	EACH	1		1
67000400	ENGINEER'S FIELD OFFICE, TYPE A	CAL MO	3		3
67100100	MOBILIZATION	L SUM	1		1
70100460	TRAFFIC CONTROL AND PROTECTION, STANDARD 701306	L SUM	1		1
70300100	SHORT TERM PAVEMENT MARKING	FOOT	6385		6385

MODEL: Default  
 FILE: \\nlsdot\pub\harcourt\illinois\gov\PI\DOT\Documents\DOT\_Offices\Dir\ct\_3\projects\0366968\CaddData\Cadd\sheet\0366968-rt-500.dgn

USER NAME = NOLASCOCJ	DESIGNED -	REVISED -	<b>STATE OF ILLINOIS DEPARTMENT OF TRANSPORTATION</b>	<b>SUMMARY OF QUANTITIES</b>				F.A.P. RTE.	SECTION	COUNTY	TOTAL SHEETS	SHEET NO.
PLOT SCALE = 100.0000' / in.	DRAWN -	REVISED -						613	7 RS-2 & 8 RS-5	BUREAU	12	3
PLOT DATE = 2/13/2020	CHECKED -	REVISED -		SCALE: SHEET 1 OF 3 SHEETS STA. TO STA.				CONTRACT NO. 66968				
	DATE -	REVISED -		ILLINOIS FED. AID PROJECT								

MODEL: Default  
 FILE: \\nlsdot\pub\lanscom\data\illinois.gov\PWIDOT\Documents\DOT\_Offices\District\_3\Projects\ID366968\CADDData\CAD\Sheet\ID366968-rt-500.dgn

CODE NO.	ITEM	UNIT	TOTAL QUANTITY	CONSTR. CODE	
				FUND TYPE	
				FEDERAL ROADWAY	0005 RURAL
				80% FED 20% STATE	
70300150	SHORT TERM PAVEMENT MARKING REMOVAL	SQ FT	2132		2132
* 78001110	PAINT PAVEMENT MARKING - LINE 4"	FOOT	210866		210866
* 78001130	PAINT PAVEMENT MARKING - LINE 6"	FOOT	12234		12234
* 78001140	PAINT PAVEMENT MARKING - LINE 8"	FOOT	1276		1276
* 78003100	PREFORMED PLASTIC PAVEMENT MARKING, TYPE B - LETTERS AND SYMBOLS	SQ FT	47		47
* 78100100	RAISED REFLECTIVE PAVEMENT MARKER	EACH	446		446
78300200	RAISED REFLECTIVE PAVEMENT MARKER REMOVAL	EACH	217		217
X4401198	HOT-MIX ASPHALT SURFACE REMOVAL, VARIABLE DEPTH	SQ YD	5979		5979
* X7830060	GROOVING FOR RECESSED PAVEMENT MARKING, LETTERS AND SYMBOLS	SQ FT	47		47
Z0030850	TEMPORARY INFORMATION SIGNING	SQ FT	42		42
Z0033700	LONGITUDINAL JOINT SEALANT	FOOT	35474		35474
∅ Z0076600	TRAINEES	HOUR	1000		1000
Z0034105	MATERIAL TRANSFER DEVICE	TON	22351		22351
∅ Z0076604	TRAINEES - TRAINING PROGRAM GRADUATE	HOUR	1000		1000
Z0048665	RAILROAD PROTECTIVE LIABILITY INSURANCE	L SUM	1		1

\*= SPECIALTY ITEM  
 ∅ 0042

USER NAME = NOLASCOCJ	DESIGNED -	REVISED -	<b>STATE OF ILLINOIS DEPARTMENT OF TRANSPORTATION</b>	<b>SUMMARY OF QUANTITIES</b>				F.A.P. RTE.	SECTION	COUNTY	TOTAL SHEETS	SHEET NO.
PLOT SCALE = 100.0000' / in.	DRAWN -	REVISED -						613	7 RS-2 & 8 RS-5	BUREAU	12	4
PLOT DATE = 2/13/2020	CHECKED -	REVISED -		SCALE: SHEET 2 OF 3 SHEETS STA. TO STA.				ILLINOIS FED. AID PROJECT				
	DATE -	REVISED -										



MAINLINE SCHEDULE													
LOCATION	LENGTH	WIDTH	RESURF AREA	HMA SURF REM 3.75"	HMA SURF CSE IL 9.5 MIX C, N50 1.75"	HMA BIND CSE IL-9.5, N50 2"	MATL TRANS DEVICE	BIT MATL (TACK COAT)	MIX CRACKS JTS & FLANGEWAYS	HMA BINDER CSE (HM) N50	LONG JOINT SEAL	TEMP RAMP	AGG WEDGE SHLD TY B
STATION	FOOT	FOOT	SQ FT	SQ YD	TON	TON	TON	POUND	TON	TON	FOOT	SQ YD	TON
STA 344+40 TO STA 537+75	19335	26	502710	55857	5474	6256	11730	37703	16.8	27.9	19335	36	731
STA 537+75 TO STA 539+85	210	36	7560	840	82	94	176	567	0.3	0.4	210		8
STA 539+85 TO STA 544+73	488	26	12688	1410	138	158	296	952	0.4	0.7	488		18
STA 544+73 TO STA 547+23	250	36	9000	1000	98	112	210	675	0.3	0.5	250		9
STA 547+23 TO STA 552+43	520	26	13520	1502	147	168	315	1014	0.5	0.8	520		20
STA 552+43 TO STA 555+00	257	36	9252	1028	101	115	216	694	0.3	0.5	257		10
STA 555+00 TO STA 602+50	4750	26	123500	13722	1345	1537	2882	9263	4.1	6.9	4750		180
STA 602+50 TO STA 617+50	1500	28	42000	4667	457	523	980	3150	1.4	2.3	1500		57
STA 617+50 TO STA 652+40	3490	26	90740	10082	988	1129	2117	6806	3.0	5.0	3490		132
STA 652+40 TO STA 676+00	2360	28	66080	7342	720	822	1542	4956	2.2	3.7	2360		89
STA 676+00 TO STA 679+00	300	26	7800	867	85	97	182	585	0.3	0.4	300		11
STA 679+00 TO STA 680+79	179	34	6086	676	66	76	142	456	0.2	0.3	179		3
STA 680+79 TO STA 688+44	765	40	30600	3400	333	381	714	2295	1.0	1.7	765		14
STA 688+44 TO STA 699+14	1070	34	36380	4042	396	453	849	2729	1.2	2.0	1070	36	40
TOTAL			957916	106435	10430	11921	22351	71845	32.0	53.1	35474	72	1322

SIDE ROADS									
LOCATION			LENGTH	WIDTH	RESURF AREA	HMA SURF REMOVAL VARIABLE DEPTH	BITUMINOUS MATERIAL (TACK COAT)	INCIDENTAL HMA SURFACING	TEMP RAMP
ROAD NAME	SIDE	STATION	FT	FT	SQ FT	SQ YD	POUND	TON	SQ YD
CTY RD 100 E	RT	405+35	30	48	1440	160	72	25	27
105 E ST	LT	407+35	34	61	2074	230	104	35	34
CTY RD 200 E	RT	462+66	30	67	2010	223	101	34	37
CTY RD 200 E	LT	462+96	20	52	1040	116	52	18	29
300 E ST	RT	520+75	30	71	2130	237	107	36	39
N 7TH ST	LT	525+50	30	41	1230	137	62	21	23
COMMERCIAL ST	LT	537+75	50	54	2700	300	135	46	30
5TH ST	LT	539+00	30	85	2550	283	128	44	47
4TH ST	LT	539+85	48	45	2160	240	108	37	25
3RD ST	LT	544+73	30	56	1680	187	84	29	31
2ND ST	RT	547+23	30	59	1770	197	89	30	33
2ND ST	LT	548+23	20	33	660	73	33	11	18
N 1ST ST	RT	554+55	30	52	1560	173	78	27	29
POPLAR ST	LT	554+55	30	53	1590	177	80	27	29
CTY RD 450 E	RT	610+00	30	58	1740	193	87	30	32
CTY RD 1160 N	LT	666+00	48	48	2304	256	115	39	27
CTY RD 1200 N	RT	688+44	30	102	3060	340	153	52	57
TOTALS						3522	1588	541	547

MODEL: Default  
 FILE: h:\m\c\p\pub\lansom.dwg  
 PROJECT: 0366968\CADD\DATA\CADD\PROJECTS\0366968\p\h-sched.tbl.dgn

USER NAME = NOLASCOCJ	DESIGNED -	REVISED -
	DRAWN -	REVISED -
PLOT SCALE = 100.0000' / in.	CHECKED -	REVISED -
PLOT DATE = 2/13/2020	DATE -	REVISED -

**STATE OF ILLINOIS**  
**DEPARTMENT OF TRANSPORTATION**

<b>SCHEDULES</b>			
SCALE:	SHEET	OF	SHEETS
	STA.	TO	STA.

F.A.P. RTE.	SECTION	COUNTY	TOTAL SHEETS	SHEET NO.
613	7 RS-2 & 8 RS-5	BUREAU	12	6
CONTRACT NO. 66968			ILLINOIS FED. AID PROJECT	

PATCHING SCHEDULE			
CLASS D PATCHES 10"			
LOCATION	PATCH LENGTH	PATCH WIDTH	TYPE III
STA TO STA	FT	FT	SQ YD
391+50	26	8	23
370+80	26	8	23
TOTAL			46

ENTRANCES & MAILBOX SCHEDULE									
LOCATION	SIDE	TYPE	MAT'L	WIDTH	AREA	HMA SURF REMOVAL VARIABLE DEPTH	BITUMINOUS MATERIALS (TACK COAT)	INCIDENTAL HMA SURFACING	AGG WEDGE SHLD TYPE B
				FT	SQ FT	SQ YD	POUND	TON	TON
STA 358+40	LT	FE	HMA	23	230	26	12	4	
STA 375+40	LT	FE	HMA	26	260	29	13	4	
STA 386+45	LT	FE	HMA	26	260	29	13	4	
STA 397+65	LT	PE	HMA	51	2652	295	133	45	
STA 416+05	LT	PE	HMA	29	290	32	15	5	
STA 419+05	LT	PE	HMA	31	1550	172	78	26	
STA 419+25	LT	MBTO	HMA	72	244	27	12	4	
STA 435+00	LT	FE	HMA	25	250	28	13	4	
STA 439+00	RT	FE	HMA	31	310	34	16	5	
STA 442+00	LT	FE	HMA	72	720	80	36	12	
STA 447+05	LT	FE	HMA	25	250	28	13	4	
STA 459+25	LT	PE	HMA	28	1260	140	63	22	
STA 480+15	LT	FE	HMA	23	230	26	12	4	
STA 482+00	LT	MBTO	HMA	72	256	28	13	4	
STA 482+60	LT	PE	HMA	29	290	32	15	5	
STA 483+10	RT	FE	HMA	25	250	28	13	4	
STA 495+75	RT	FE	HMA	27	540	60	27	9	
STA 496+65	LT	MBTO	HMA	72	368	41	18	6	
STA 528+90	LT	CE	HMA	24	240	27	12	4	
STA 530+82	LT	CE	HMA	94	1880	209	94	32	
STA 538+47	LT	CE	AGG	25	75				0.5
STA 544+97	RT	CE	HMA	41	820	91	41	14	
STA 548+24	RT	FE	HMA	24	240	27	12	4	
STA 549+54	LT	CE	HMA	83	830	92	42	14	
STA 549+94	RT	FE	HMA	28	280	31	14	5	
STA 551+74	RT	PE	AGG	59	177				1.1
STA 552+04	LT	CE	HMA	85	850	94	43	14	
STA 553+14	RT	PE	HMA	54	540	60	27	9	
STA 553+84	RT	PE	AGG	18	54				0.3
STA 556+54	RT	PE	HMA	29	580	64	29	10	
STA 557+69	LT	CE	HMA	81	1620	180	81	28	
STA 579+79	LT	FE	AGG	22	66				0.4
STA 620+49	LT	FE	AGG	18	54				0.3
STA 621+99	RT	FE	AGG	23	69				0.4
STA 624+24	RT	MBTO	HMA	72	260	29	13	4	
STA 624+74	RT	PE	HMA	31	310	34	16	5	
STA 629+74	LT	PE	HMA	23	920	102	46	16	
STA 631+24	RT	FE	HMA	46	460	51	23	8	
STA 638+24	RT	FE	AGG	25	75				0.5
STA 641+24	LT	FE	HMA	25	250	28	13	4	
STA 675+74	RT	FE	HMA	20	200	22	10	3	
STA 677+54	RT	PE	HMA	25	750	83	38	13	
STA 677+57	LT	FE	AGG	14	42				0.3
STA 680+97	RT	PE	HMA	28	560	62	28	10	
STA 681+42	LT	FE	HMA	32	320	36	16	6	
STA 681+72	RT	MBTO	AGG	72	298				1.9
STA 682+02	RT	PE	AGG	25	75				0.5
STA 688+54	LT	FE	AGG	22	66				0.4
TOTAL						2457	1113	374	7

MODEL: Default  
 FILE: \\nls-px1\pub\room\dat\illnls\gov\PIWDOT\Documents\DOT\_Offices\Illnls\3\Project\366968\CADDData\CAD\Sheet\366968-rt-sched.tbl.dgn

USER NAME = NOLASCOCJ	DESIGNED -	REVISED -
	DRAWN -	REVISED -
PLOT SCALE = 100.0000 ' / in.	CHECKED -	REVISED -
PLOT DATE = 2/13/2020	DATE -	REVISED -

**STATE OF ILLINOIS  
DEPARTMENT OF TRANSPORTATION**

**SCHEDULES**

SCALE: SHEET OF SHEETS STA. TO STA.

F.A.P. RTE.	SECTION	COUNTY	TOTAL SHEETS	SHEET NO.
613	7 RS-2 & 8 RS-5	BUREAU	12	7
CONTRACT NO. 66968				
ILLINOIS FED. AID PROJECT				

SHORT TERM PAVEMENT MARKING SCHEDULE			
LOCATION	LENGTH	SHORT TERM PM	SHORT TERM PM REMOVAL
STATION	FOOT	FOOT	SQ FT
STA 344+40 TO STA 351+90	750	135	45
STA 351+90 TO STA 359+20	730	131	44
STA 359+20 TO STA 362+16	296	53	18
STA 362+16 TO STA 372+01	985	177	59
STA 372+01 TO STA 385+81	1380	248	83
STA 385+81 TO STA 391+91	610	110	37
STA 391+91 TO STA 395+21	330	59	20
STA 395+21 TO STA 402+01	680	122	41
STA 402+01 TO STA 417+01	1500	270	90
STA 417+01 TO STA 426+71	970	175	58
STA 426+71 TO STA 434+96	825	149	50
STA 434+96 TO STA 441+76	680	122	41
STA 441+76 TO STA 442+56	80	14	5
STA 442+56 TO STA 451+16	860	155	52
STA 451+16 TO STA 452+71	155	28	9
STA 452+71 TO STA 460+96	825	149	50
STA 460+96 TO STA 463+76	280	50	17
STA 463+76 TO STA 471+61	785	141	47
STA 471+61 TO STA 508+41	3680	662	221
STA 508+41 TO STA 517+16	875	158	53
STA 517+16 TO STA 522+16	500	90	30
STA 522+16 TO STA 526+66	450	81	27
STA 526+66 TO STA 562+66	3600	648	216
STA 562+66 TO STA 571+96	930	167	56
STA 571+96 TO STA 572+66	70	13	4
STA 572+66 TO STA 580+66	800	144	48
STA 580+66 TO STA 585+06	440	79	26
STA 585+06 TO STA 593+06	800	144	48
STA 593+06 TO STA 601+56	850	153	51
STA 601+56 TO STA 619+81	1825	329	110
STA 619+81 TO STA 630+06	1025	185	62
STA 630+06 TO STA 682+06	5200	936	312
STA 682+06 TO STA 688+44	638	115	38
STA 688+44 TO STA 699+14	1070	193	64
TOTAL	35474	6385	2132

PAVEMENT MARKINGS									
LOCATION	LENGTH	PAINT - 2 APPLICATIONS				PREFORMED PLASTIC PM TYPE B - LETTERS & SYMBOLS* SQ FT	GROOVING FOR RECESSED PM LETTERS & SYMBOLS SQ FT	RAISED REF PM EACH	RAISED REF PM REM EACH
		4" LINE		6" LINE	8" LINE				
		WHITE	YELLOW	YELLOW	WHITE				
STATION	FOOT	FOOT	FOOT	FOOT	FOOT	SQ FT	SQ FT	EACH	EACH
STA 344+40 TO STA 351+90	750	3000			376			9	
STA 351+90 TO STA 359+20	730	2920	1460		366			9	
STA 359+20 TO STA 362+16	296	1184	1184					4	
STA 362+16 TO STA 372+01	985	3940	1970	492				12	
STA 372+01 TO STA 385+81	1380	5520	5520					17	
STA 385+81 TO STA 391+91	610	2440	1220	306				8	
STA 391+91 TO STA 395+21	330	1320		166				4	
STA 395+21 TO STA 402+01	680	2720	1360	340				9	
STA 402+01 TO STA 417+01	1500	6000	6000					19	
STA 417+01 TO STA 426+71	970	3880	1940	486				12	
STA 426+71 TO STA 434+96	825	3300		412				10	
STA 434+96 TO STA 441+76	680	2720	1360	340				9	
STA 441+76 TO STA 442+56	80	320		40				1	
STA 442+56 TO STA 451+16	860	3440	1720	430				11	
STA 451+16 TO STA 452+71	155	620	620					2	
STA 452+71 TO STA 460+96	825	3300	1650	412				10	
STA 460+96 TO STA 463+76	280	1120	1120					4	
STA 463+76 TO STA 471+61	785	3140	1570	392				10	
STA 471+61 TO STA 508+41	3680	14720		1840				46	
STA 508+41 TO STA 517+16	875	3500	1750	438				11	
STA 517+16 TO STA 522+16	500	2000	2000					6	
STA 522+16 TO STA 526+66	450	1800	900	226				6	
STA 526+66 TO STA 562+66	3600	14400		1800				45	45
STA 562+66 TO STA 571+96	930	3720	1860	466				12	12
STA 571+96 TO STA 572+66	70	280		36				1	1
STA 572+66 TO STA 580+66	800	3200	1600	400				10	10
STA 580+66 TO STA 585+06	440	1760		220				6	6
STA 585+06 TO STA 593+06	800	3200	1600	400				10	10
STA 593+06 TO STA 601+56	850	3400	1700	426				11	11
STA 601+56 TO STA 619+81	1825	7300		912				23	23
STA 619+81 TO STA 630+06	1025	4100	2050	512				13	13
STA 630+06 TO STA 682+06	5200	20800	20800					65	65
STA 682+06 TO STA 688+44	638	1616	2672		1276	47	47	8	8
STA 688+44 TO STA 699+14	1070	4280	4280					13	13
TOTAL	35474	210866	12234	1276	47	47	446	217	

\*STA 682+06 TO 688+44 INCLUDES (3) PREFORMED PLASTIC PAVEMENT MARKING TYPE B RIGHT TURN ARROWS AT 1200N ROAD, 15.6 SQ FT EACH

MODEL: Default  
FILE: \\nls-px\pub\ancom.d\illinois.gov\PWIDOT\Documents\DOT\_Offices\Illinet\_3\Projects\0366968\CADDData\CAD\Sheet\0366968-rt-schedule.dgn

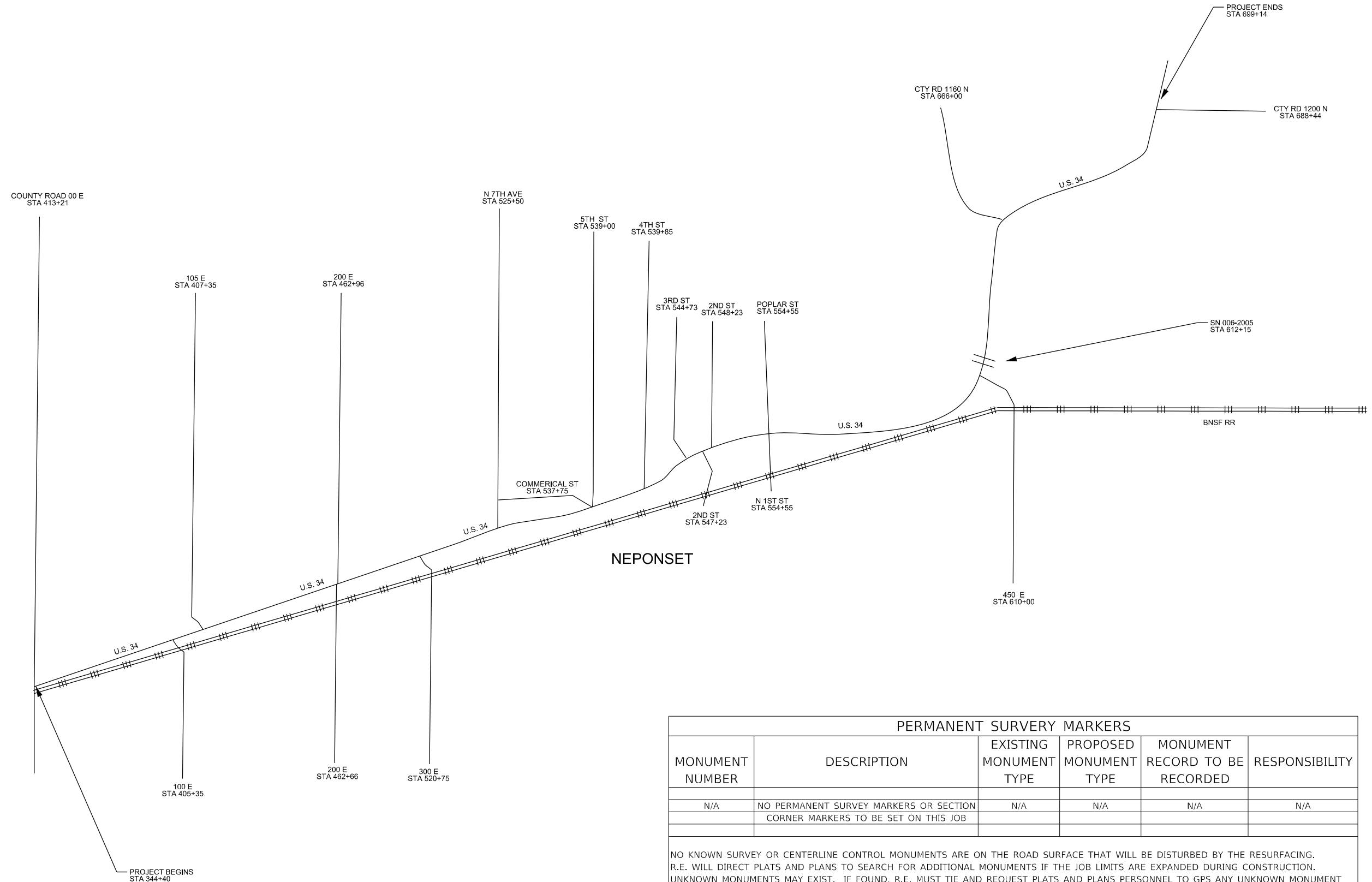
USER NAME = NOLASCOCJ	DESIGNED -	REVISED -
	DRAWN -	REVISED -
PLOT SCALE = 100.0000' / in.	CHECKED -	REVISED -
PLOT DATE = 2/13/2020	DATE -	REVISED -

STATE OF ILLINOIS  
DEPARTMENT OF TRANSPORTATION

SCHEDULES	
SCALE:	SHEET OF SHEETS STA. TO STA.

F.A.P. RTE.	SECTION	COUNTY	TOTAL SHEETS	SHEET NO.
613	7 RS-2 & 8 RS-5	BUREAU	12	8
CONTRACT NO. 66968				
ILLINOIS FED. AID PROJECT				





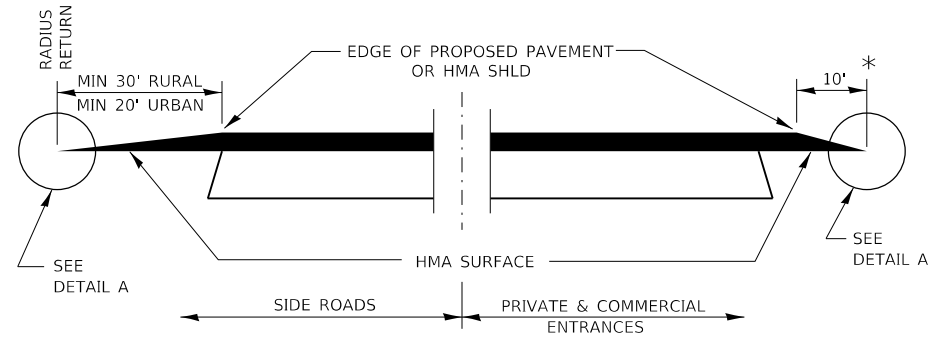
PERMANENT SURVEY MARKERS					
MONUMENT NUMBER	DESCRIPTION	EXISTING MONUMENT TYPE	PROPOSED MONUMENT TYPE	MONUMENT RECORD TO BE RECORDED	RESPONSIBILITY
N/A	NO PERMANENT SURVEY MARKERS OR SECTION CORNER MARKERS TO BE SET ON THIS JOB	N/A	N/A	N/A	N/A
<p>NO KNOWN SURVEY OR CENTERLINE CONTROL MONUMENTS ARE ON THE ROAD SURFACE THAT WILL BE DISTURBED BY THE RESURFACING. R.E. WILL DIRECT PLATS AND PLANS TO SEARCH FOR ADDITIONAL MONUMENTS IF THE JOB LIMITS ARE EXPANDED DURING CONSTRUCTION. UNKNOWN MONUMENTS MAY EXIST. IF FOUND, R.E. MUST TIE AND REQUEST PLATS AND PLANS PERSONNEL TO GPS ANY UNKNOWN MONUMENT WHICH IS SUBJECT TO DESTRUCTION BY THE RESURFACING WORK, AND INFORM THEM TO RESET THE MONUMENT UPON JOB COMPLETION. NO MONUMENT RECORDS ARE REQUIRED FOR THIS JOB.</p>					

FILE NAME =	USER NAME = NOLASCOCJ	DESIGNED -	REVISED -
pw:\planroom\dot\illinois.gov\PWIDOT\Documents\IDOT\Files\District 3\Projects\D366968\CADData\CADsheets\D366968-01.dwg		DRAWN -	REVISED -
Default	PLOT SCALE = 100.0000' / in.	CHECKED -	REVISED -
	PLOT DATE = 2/13/2020	DATE -	REVISED -

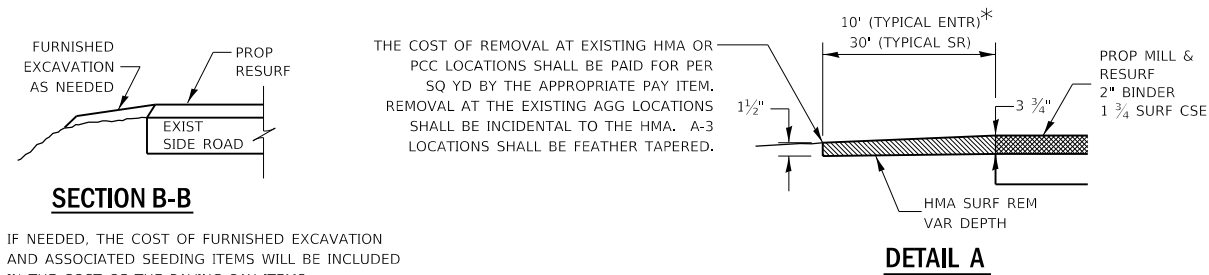
**STATE OF ILLINOIS  
DEPARTMENT OF TRANSPORTATION**

LINE DIAGRAM			
SCALE:	SHEET	OF SHEETS	STA. TO STA.

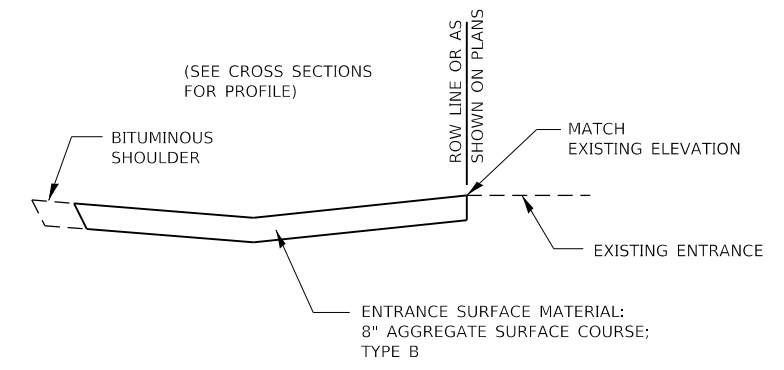
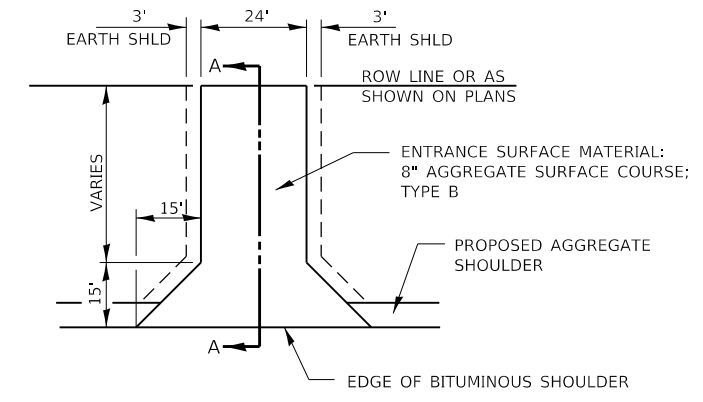
F.A.P. RTE.	SECTION	COUNTY	TOTAL SHEETS	SHEET NO.
613	7 RS-2 & 8 RS-5	BUREAU	12	9
CONTRACT NO. 66968				
ILLINOIS		FED. AID PROJECT		



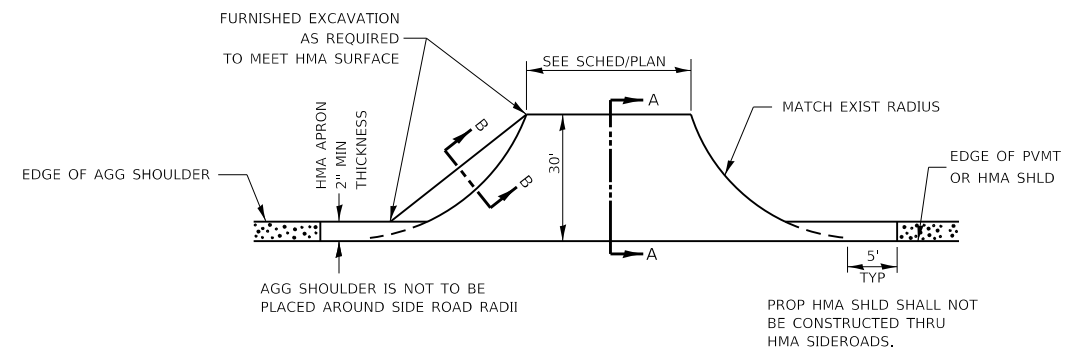
**SECTION A-A**  
**DETAILS AT ENTRANCES & SIDE ROADS**



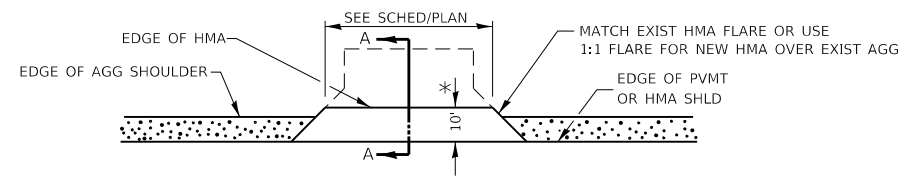
**SECTION B-B**  
IF NEEDED, THE COST OF FURNISHED EXCAVATION AND ASSOCIATED SEEDING ITEMS WILL BE INCLUDED IN THE COST OF THE PAVING PAY ITEMS



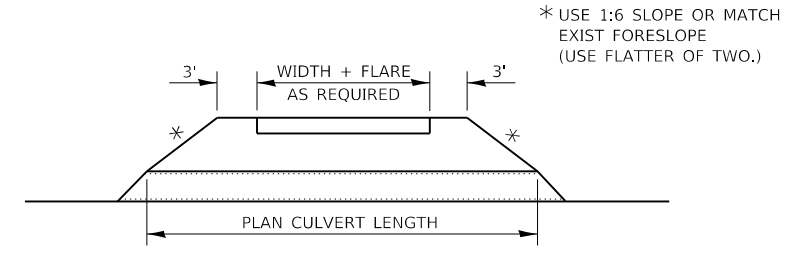
**SECTION A-A**



**PLAN AT SIDE ROADS**



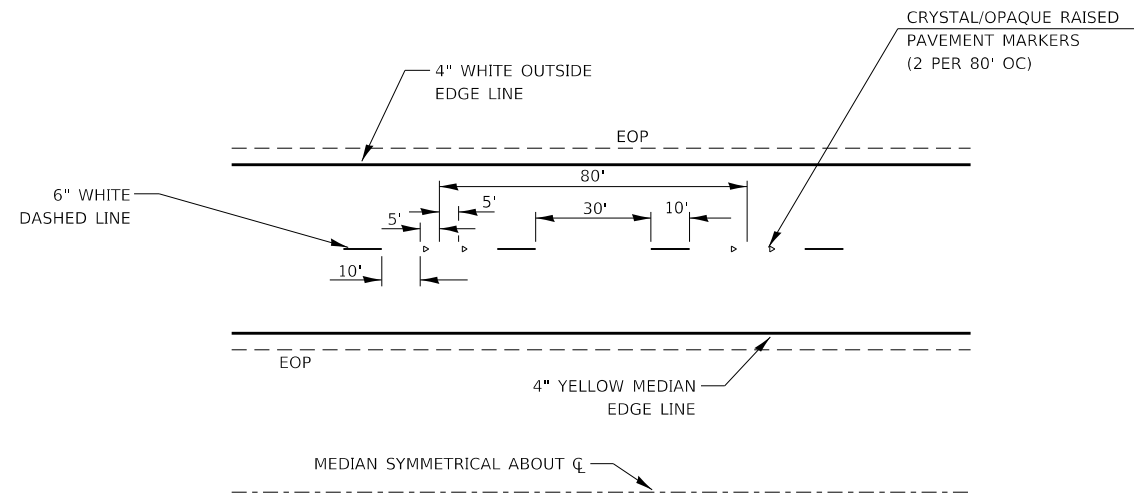
**PLAN AT PRIVATE & COMMERCIAL ENTRANCES**  
(DO NOT RESURFACE FIELD ENTRANCES)



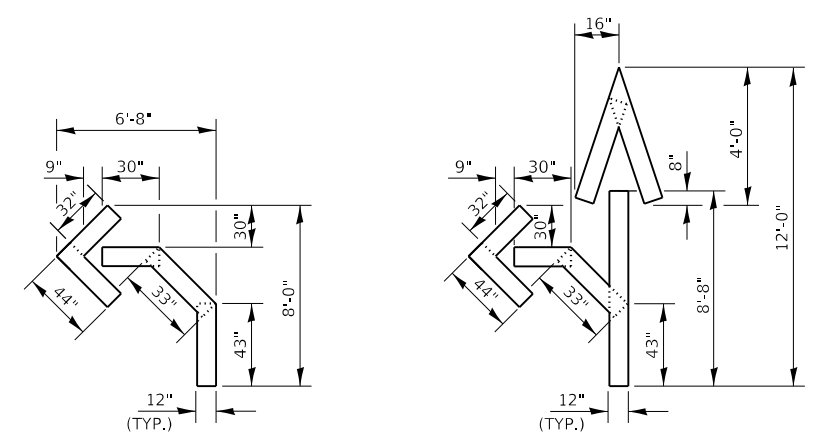
**FIELD ENTRANCE DETAIL**

\* PROPOSED HMA RESURFACING AT PUBLIC EDUCATIONAL FACILITY ENTRANCES SHALL BE EXTENDED TO THE RIGHT-OF-WAY LIMITS.

FILE NAME =	USER NAME = NOLASCOCJ	DESIGNED -	REVISED -	<b>STATE OF ILLINOIS DEPARTMENT OF TRANSPORTATION</b>	<b>DETAILS</b>	F.A.P. RTE.	SECTION	COUNTY	TOTAL SHEETS	SHEET NO.	
pw:\planroom\dot\illinois\gov\PWIDOT\Documents\IDOT\Office\District 3\Projects\D366968\CADData\CADsheets\D366968	DRWING	REVISION	REVISION			613	7 RS-2 & 8 RS-5	BUREAU	12	10	
Default	PLOT SCALE = 100,0000' / in.	CHECKED -	REVISION			CONTRACT NO. 66968					
	PLOT DATE = 2/13/2020	DATE -	REVISION			SCALE:	SHEET	OF	SHEETS	STA.	TO STA.

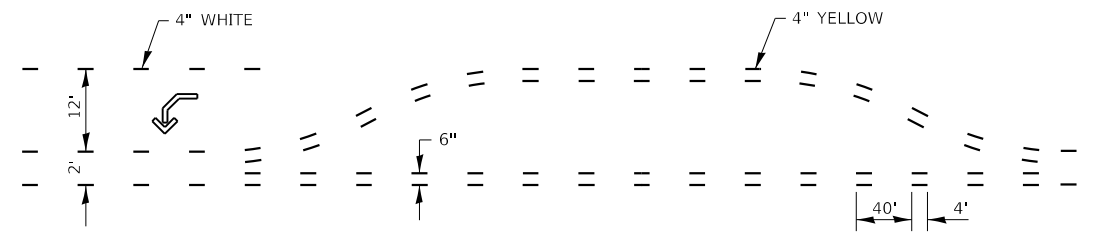


**TYPICAL PAVEMENT MARKINGS**

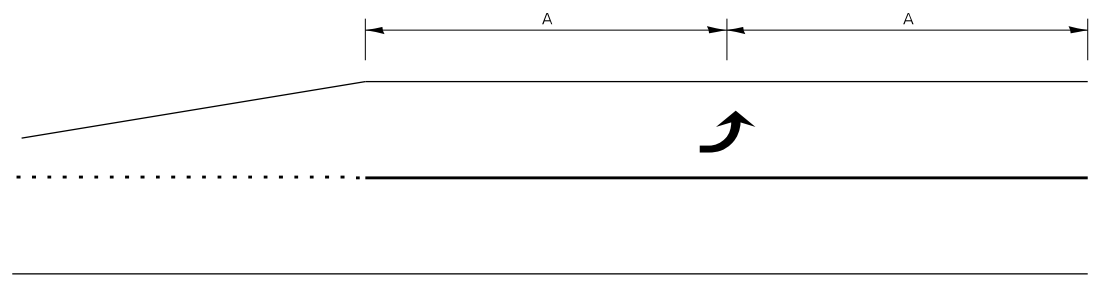


QUANTITY  
12" LINE = 16 LIN FT  
OR 4" LINE = 48 LIN FT

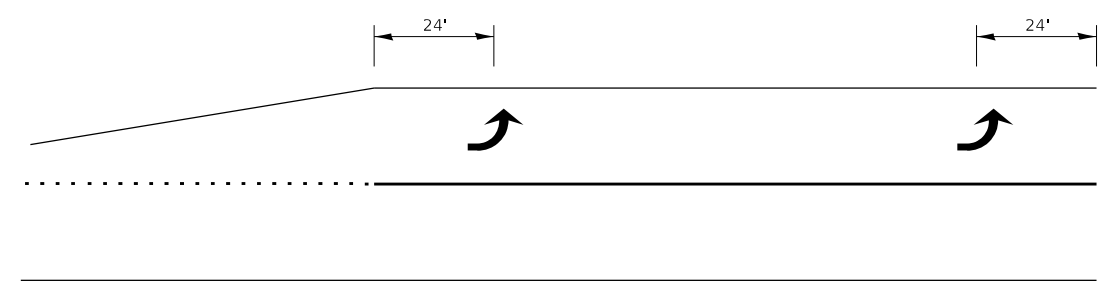
QUANTITY  
12" LINE = 29 LIN FT  
OR 4" LINE = 87 LIN FT



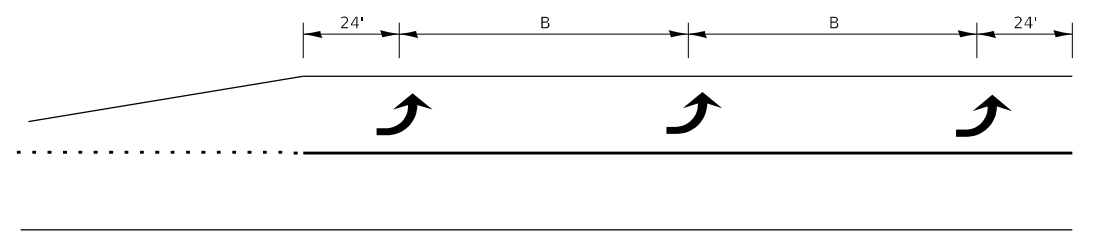
**SHORT-TERM PAVEMENT MARKING FOR MEDIANS AND ARROWS**



**99' AND UNDER**

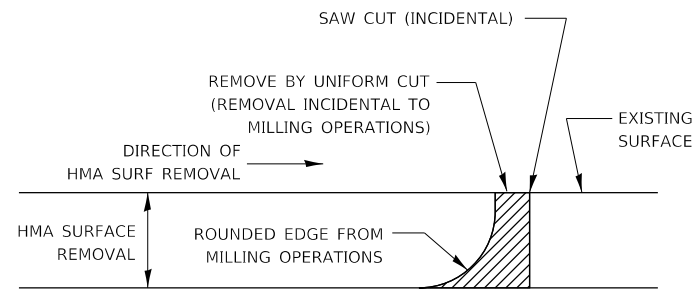


**100' TO 149'**



**150' AND LONGER**

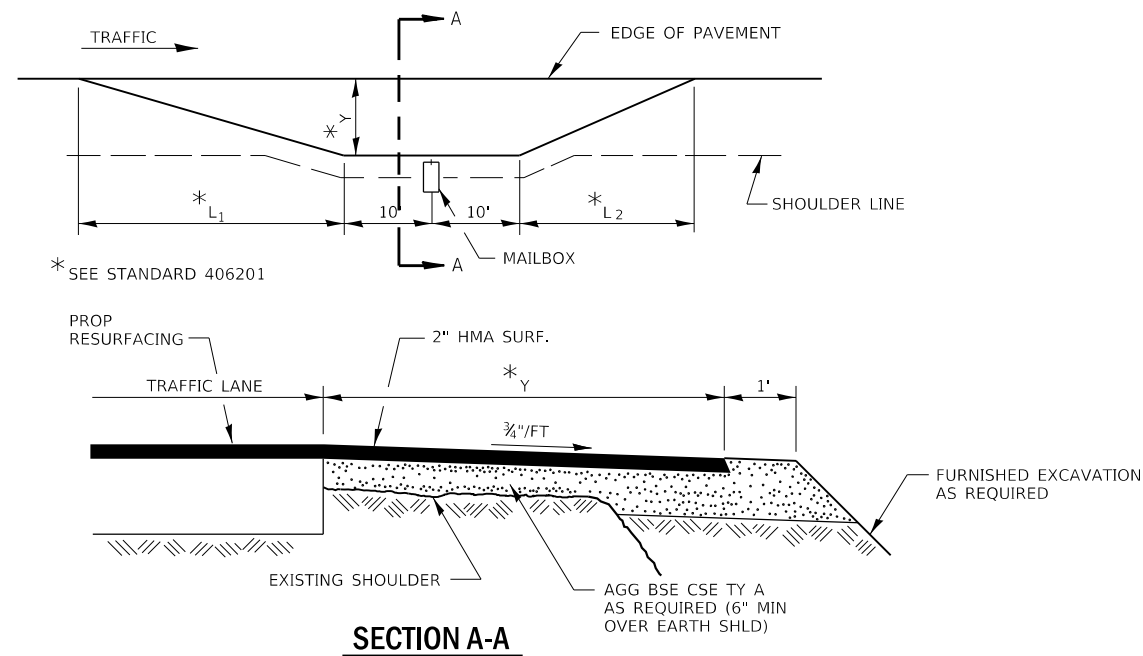
**TYPICAL PLACEMENT OF ARROWS IN TURN LANES**



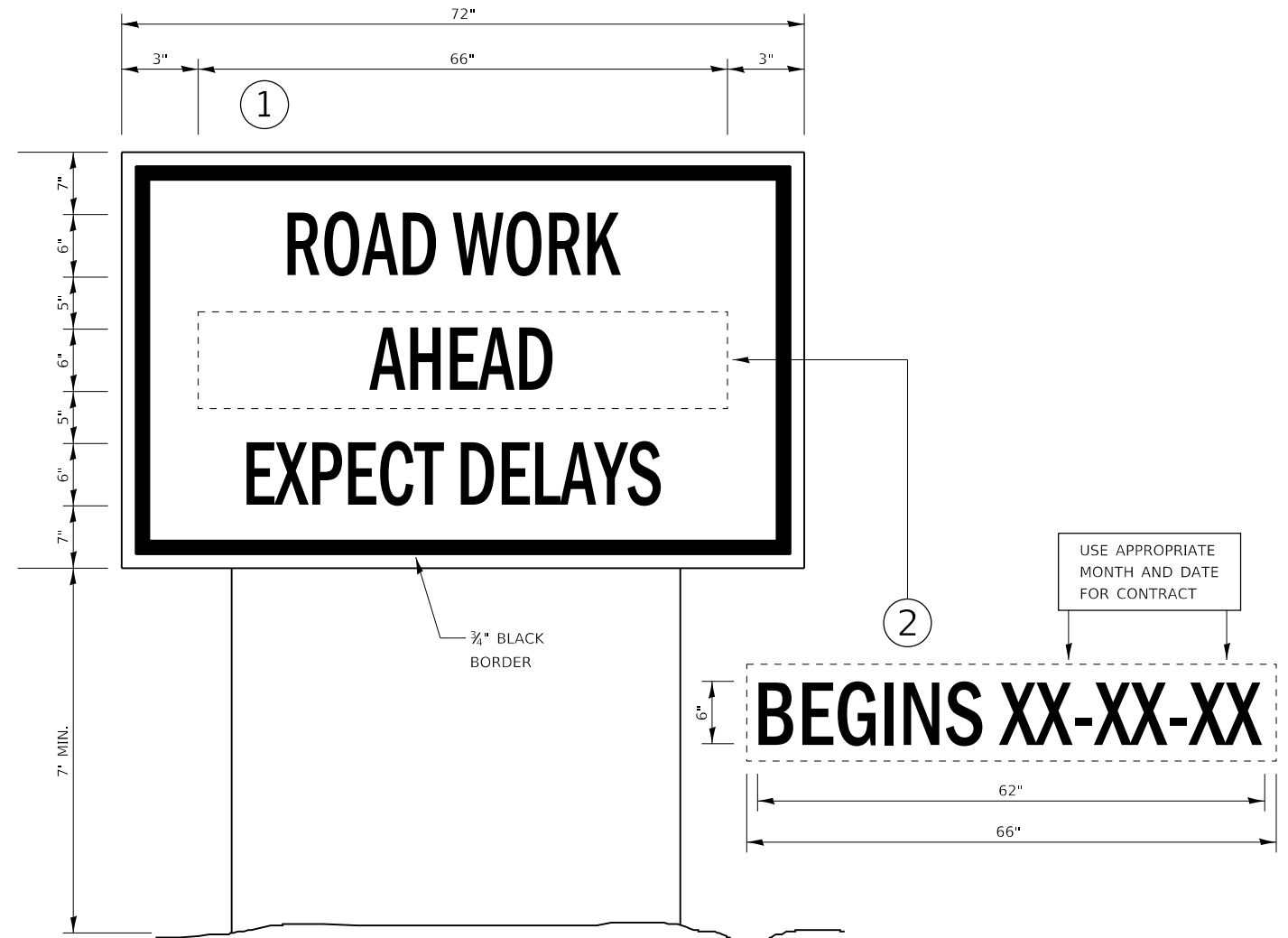
**NOTE:**

WHEN MILLING OPERATIONS PRODUCE A ROUNDED EDGE, THEN A SAW CUT SHALL BE USED TO MANUFACTURE A PERPENDICULAR EDGE AS SHOWN IN THE DETAIL. THE ENGINEER SHALL BE THE SOLE JUDGE CONCERNING THE USE OF THIS DETAIL

**HMA DETAIL AT BUTT JOINTS**



**RURAL MAILBOX TURNOUT DETAILS**



**TEMPORARY INFORMATION SIGNING**

**NOTES:**

1. USE 6" D BLACK LETTERING ON FLUORESCENT ORANGE BACKGROUND.
2. ERECT SIGNS AT LOCATIONS IN ADVANCE OF THE "ROAD CONSTRUCTION AHEAD" SIGNS AS DIRECTED BY THE ENGINEER.
3. ERECT SIGN ① WITH INSTALLED PANEL ② A MINIMUM OF ONE WEEK PRIOR TO THE START OF THE LANE CLOSURE.
4. REMOVE PANEL ② ON THAT DATE.
5. SEE SPECIAL PROVISION "TEMPORARY INFORMATION SIGNING" FOR ADDITIONAL INFORMATION.
6. WILL BE PAID FOR PER SQ FT AS "TEMPORARY INFORMATION SIGNING". EACH SIGN = 21 SQ FT AND THE DATE PANEL ② WILL NOT BE MEASURED SEPARATELY FOR PAYMENT.

FILE NAME =	USER NAME = NOLASCOCJ	DESIGNED -	REVISED -	<b>STATE OF ILLINOIS DEPARTMENT OF TRANSPORTATION</b>	<b>DETAILS</b>	F.A.P. RTE.	SECTION	COUNTY	TOTAL SHEETS	SHEET NO.	
pw:\planroom\dot\illinois\gov\PWIDOT\Documents\DOT\Office\District 3\Projects\D366968\CADData\CADsheets\D366968-DRWINGN -		REVISIONS -				613	7 RS-2 & 8 RS-5	BUREAU	12	12	
Default	PLOT SCALE = 100,0000' / in.	CHECKED -	REVISIONS -			CONTRACT NO. 66968					
	PLOT DATE = 2/13/2020	DATE -	REVISIONS -			SCALE:	SHEET	OF	SHEETS	STA.	TO STA.