

STATE OF ILLINOIS DEPARTMENT OF TRANSPORTATION PROPOSED HIGHWAY PLANS

F.A. RTE.	SECTION	COUNTY	TOTAL SHEETS	SHEET NO.
	19-00018-00-SW	GREENE	22	1
		ILLINOIS	CONTRACT NO. 97726	

INDEX OF SHEETS

- 1 COVER SHEET
- 2 GENERAL NOTES, COMMITMENTS
- 3-5 SUMMARY OF QUANTITIES
- 6-7 TYPICAL SECTIONS
- 8 ALIGNMENT & BENCHMARKS
- 9 CONTROL TIES
- 10-11 PLAN AND PROFILE FIFTH STREET (WEST SIDE)
- 12-13 PLAN AND PROFILE FIFTH STREET (EAST SIDE)
- 14 PLAN AND PROFILE SYCAMORE STREET
- 15 PLAN AND PROFILE FOURTH STREET
- 16 PLAN AND PROFILE SOUTH MAIN STREET (NORTH SIDE)
- 17 PLAN AND PROFILE SOUTH MAIN STREET (SOUTH SIDE)
- 18-22 CONSTRUCTION DETAILS

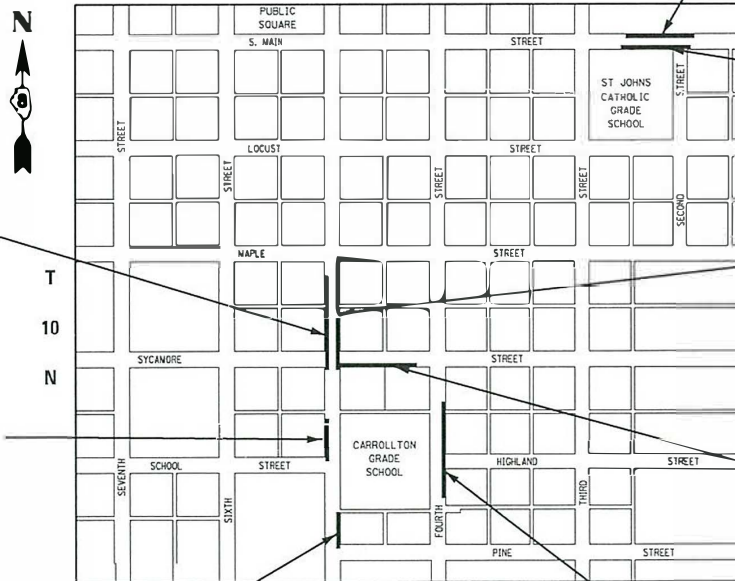
HIGHWAY STANDARDS

- 000001-07 - STANDARD SYMBOLS, ABBREVIATIONS AND PATTERNS
- 280001-07 - TEMPORARY EROSION CONTROL SYSTEMS
- 424001-11 - PERPENDICULAR CURB RAMPS FOR SIDEWALKS
- 424026-03 - ENTRANCE /ALLEY PEDESTRIAN CROSSINGS
- 602301-04 - INLET - TYPE A
- 604036-03 - GRATE TYPE 8
- 606001-07 - CONCRETE CURB TYPE B AND COMBINATION CONCRETE CURB AND GUTTER
- 701006-05 - OFF-RD OPERATIONS, 2L, 2W, 15' TO 24" FROM PAVEMENT EDGE
- 701301-04 - LANE CLOSURE, 2L, 2W, SHORT TIME OPERATIONS
- 701501-06 - URBAN LANE CLOSURE, 2L, 2W, UNDIVIDED
- 701801-06 - SIDEWALK CORNER OR CROSSWALK CLOSURE
- 701901-08 - TRAFFIC CONTROL DEVICES

SECTION 19-00018-00-SW PROJECT UP47(202) SAFE ROUTES TO SCHOOLS PROGRAM SIDEWALK IMPROVEMENTS CITY OF CARROLLTON GREENE COUNTY

C-98-018-20

R 12 W 3rd PM



BEGIN SECTION 19-00018-00-SW
FIFTH STREET (WEST SIDE)
STA. 14 + 51.50
END SECTION 19-00018-00-SW
FIFTH STREET (WEST SIDE)
STA. 17 + 95.10

BEGIN SECTION 19-00018-00-SW
FIFTH STREET (WEST SIDE)
STA. 10 + 63.31
END SECTION 19-00018-00-SW
FIFTH STREET (WEST SIDE)
STA. 12 + 06.60

BEGIN SECTION 19-00018-00-SW
FIFTH STREET (EAST SIDE)
STA. 20 + 62.16
END SECTION 19-00018-00-SW
FIFTH STREET (EAST SIDE)
STA. 22 + 16.23

LAYOUT

0' 400' 800' 1200'
1" = 400'

LENGTH OF IMPROVEMENT FIFTH STREET (WEST SIDE) = 486.89 FEET = 0.092 MILES
 LENGTH OF IMPROVEMENT FIFTH STREET (EAST SIDE) = 618.90 FEET = 0.117 MILES
 LENGTH OF IMPROVEMENT SYCAMORE STREET = 274.50 FEET = 0.052 MILES
 LENGTH OF IMPROVEMENT FOURTH STREET = 326.40 FEET = 0.062 MILES
 LENGTH OF IMPROVEMENT S. MAIN STREET (SOUTH SIDE) = 235.00 FEET = 0.045 MILES
 LENGTH OF IMPROVEMENT S. MAIN STREET (NORTH SIDE) = 284.00 FEET = 0.054 MILES
 TOTAL LENGTH OF IMPROVEMENTS = 2225.69 FT. = 0.422 MILE
 NET LENGTH OF IMPROVEMENTS = 2225.69 FT. = 0.422 MILE

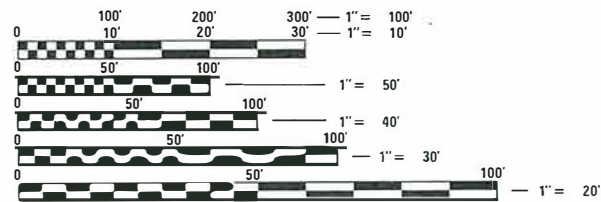
BEGIN SECTION 19-00018-00-SW
S. MAIN STREET (NORTH SIDE)
STA. 60 + 25.50
END SECTION 19-00018-00-SW
S. MAIN STREET (NORTH SIDE)
STA. 63 + 09.50

BEGIN SECTION 19-00018-00-SW
S. MAIN STREET (SOUTH SIDE)
STA. 70 + 81.00
END SECTION 19-00018-00-SW
S. MAIN STREET (SOUTH SIDE)
STA. 73 + 16.00

BEGIN SECTION 19-00018-00-SW
FIFTH STREET (EAST SIDE)
STA. 28 + 08.00
END SECTION 19-00018-00-SW
FIFTH STREET (EAST SIDE)
STA. 32 + 72.83

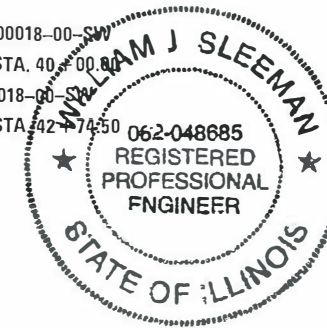
BEGIN SECTION 19-00018-00-SW
SYCAMORE STREET STA. 40 + 00.00
END SECTION 19-00018-00-SW
SYCAMORE STREET STA. 42 + 74.50

BEGIN SECTION 19-00018-00-SW
FOURTH STREET STA. 50 + 34.60
END SECTION 19-00018-00-SW
FOURTH STREET STA. 53 + 61.00



FULL SIZE PLANS HAVE BEEN PREPARED USING STANDARD ENGINEERING SCALES. REDUCED SIZED PLANS WILL NOT CONFORM TO STANDARD SCALES. IN MAKING MEASUREMENTS ON REDUCED PLANS, THE ABOVE SCALES MAY BE USED.

J.U.L.I.E.
JOINT UTILITY LOCATION INFORMATION FOR EXCAVATION
1-800-892-0123
OR 811



BY [Signature]
DATE JAN 21, 2020

STATE OF ILLINOIS DEPARTMENT OF TRANSPORTATION	
APPROVED <u>1/21</u> 20 <u>20</u>	
<u>[Signature]</u> MAYOR - CITY OF CARROLLTON	
PASSED <u>February 5,</u> 20 <u>20</u>	
<u>[Signature]</u> DISTRICT 8 ENGINEER OF LOCAL ROADS & STREETS	
Releasing For Bid Based on Limited Review	<u>February 5,</u> 20 <u>20</u>
<u>[Signature]</u> REGION 5 ENGINEER	

BENTON & ASSOCIATES, INC.
1970 W. Lafayette Ave., Jacksonville IL 62650
(217) 245-4146 (217) 245-4149 Fax

Macomb Illinois
Kirksville Missouri
Macon Missouri
Rolla Missouri
Lebanon Missouri

BENTON & ASSOCIATES INC.
Illinois Design Firm
Registration No. 184-000652

GENERAL NOTES

1. THE LOCATION OF UNDERGROUND UTILITIES SHOWN ON THE PLANS REPRESENTS THE BEST KNOWLEDGE OF THE OWNER AND THE INDICATED ADJUSTMENTS ARE CONSIDERED TO BE REASONABLY ACCURATE. IT SHALL BE THE CONTRACTORS RESPONSIBILITY TO VERIFY LOCATIONS OF UNDERGROUND INSTALLATIONS BEFORE STARTING CONSTRUCTION OPERATIONS. THE CONTRACTOR SHALL INDEMNIFY THE OWNER, ITS OFFICERS AND EMPLOYEES AGAINST ALL CLAIMS DUE TO DAMAGE TO CORPORATE OR PRIVATE PROPERTY RESULTING FROM HIS/HER CONSTRUCTION OPERATIONS AS DESCRIBED IN ARTICLE 107.20 AND 107.26 OF THE STANDARD SPECIFICATIONS FOR ROAD AND BRIDGE CONSTRUCTION.
2. THE CONTRACTOR MAY BE REQUIRED TO CONDUCT SOME OF HIS/HER GRADING OPERATIONS AROUND TRANSMISSION POLES AND UNDER TRANSMISSION LINES. THE ADDED COST OF SO DOING SHALL BE INCLUDED WITH THE COST OF THE CONSTRUCTION ITEM FOR WHICH THE GRADING IS BEING ACCOMPLISHED.
3. WHERE SECTION OR SUBSECTION MONUMENTS ARE ENCOUNTERED, THE ENGINEER SHALL BE NOTIFIED BEFORE SUCH MONUMENTS ARE REMOVED. THE CONTRACTOR SHALL PROTECT AND CAREFULLY PRESERVE ALL MONUMENTS UNTIL AN AUTHORIZED SURVEYOR OR AGENT HAS WITNESSED OR OTHERWISE REFERENCED THEIR LOCATION. THE CONTRACTOR WILL BE RESPONSIBLE FOR HAVING AN AUTHORIZED SURVEYOR RE-ESTABLISH ANY SECTION OR SUBSECTION MONUMENTS DESTROYED BY HIS OPERATIONS.
4. ALL ELEVATIONS SHOWN REFER TO THE U.S.G.S. DATUM - NORTH AMERICAN VERTICAL DATUM OF 1988 (NAVD88).
5. ALL EXISTING ROADWAY FEATURES SUCH AS PAVEMENT, PAVEMENT MARKINGS, CURB, SIDEWALK, DRIVEWAY PAVEMENT, CULVERTS, HEADWALLS, FENCING, SIGNS, RETAINING WALLS, ETC. WHICH INTERFERE WITH THE PROPOSED CONSTRUCTION SHALL BE REMOVED BY THE CONTRACTOR UNLESS NOTED OTHERWISE ON THE PLANS. ALL MISCELLANEOUS FEATURES WHICH ARE TO BE REMOVED AND FOR WHICH THERE IS NO SPECIFIC PAY ITEM, WILL NOT BE MEASURED SEPARATELY FOR PAYMENT. THE COST OF THIS REMOVAL WORK SHALL BE INCLUDED WITH THE COST OF THE CONSTRUCTION ITEM FOR WHICH THE REMOVAL IS BEING ACCOMPLISHED.
6. ALL EXISTING PUBLIC AND MUNICIPAL OWNED UTILITIES REQUIRING ADJUSTMENT WILL BE MADE BY THE UTILITY OWNER INVOLVED UNLESS OTHERWISE NOTED. WHERE NO PROVISIONS HAVE BEEN MADE FOR ADJUSTMENT ON THE PLANS, NO ADDITIONAL COMPENSATION WILL BE ALLOWED DUE TO DELAYS OR INCONVENIENCES CAUSED BY THE SAID UTILITY ADJUSTMENTS.
7. IT IS THE CONTRACTORS RESPONSIBILITY TO ASCERTAIN EXISTING FIELD CONDITIONS BEFORE BIDDING ON THIS PROJECT, SPECIFICALLY AS THEY RELATE TO THE LUMP SUM PAY ITEMS.
8. ABANDONED UNDERGROUND UTILITIES THAT CONFLICT WITH CONSTRUCTION SHALL BE DISPOSED OUTSIDE THE LIMITS OF RIGHT OF WAY ACCORDING TO ARTICLE 202.03 OF THE STANDARD SPECIFICATIONS AND AS DIRECTED BY THE ENGINEER. THIS WORK WILL NOT BE PAID FOR SEPARATELY, BUT SHALL BE CONSIDERED INCLUDED IN THE COST OF EARTH EXCAVATION AND NO ADDITIONAL COMPENSATION WILL BE ALLOWED.
9. THE CONTRACTOR SHALL VERIFY ALL DIMENSIONS AND CONDITIONS IN THE FIELD PRIOR TO CONSTRUCTION AND ORDERING OF MATERIALS.
10. REMOVAL OF EXISTING BITUMINOUS SURFACE (OIL AND CHIP), HMA SURFACE, AGGREGATE BASE COURSE AND AGGREGATE SURFACE COURSE SHALL BE CONSIDERED INCLUDED IN EARTH EXCAVATION. ALL TRANSITIONS BETWEEN EXISTING ROADWAY SURFACES TO REMAIN AND THE PROPOSED IMPROVEMENTS SHALL BE MADE AS DIRECTED BY THE DEPARTMENT. COST OF THESE TRANSITIONS SHALL BE INCLUDED IN THE COST OF THE WORK ASSOCIATED WITH COMBINATION CONCRETE CURB AND GUTTER AND PORTLAND CEMENT CONCRETE SIDEWALK.
11. EXISTING PAVEMENT, PAVEMENT MARKING, SIGNS, SIDEWALK AND CURB AND GUTTER DAMAGED DUE TO THE CONTRACTORS NEGLIGENCE SHALL BE REPLACED TO THE SATISFACTION OF THE ENGINEER, AT NO ADDITIONAL COST TO THE DEPARTMENT.
12. DURING CONSTRUCTION OPERATIONS, THE CONTRACTOR SHALL COMPLY WITH THE LEGAL LOADING LIMITS. THE CONTRACTOR SHALL BE RESPONSIBLE FOR REPAIRING ANY DAMAGE CAUSED BY THE LUGS OR CLEATS ON TREADS OR WHEELS, OR EQUIPMENT, OR BY EXCESSIVE WEIGHTS AND LOADS.
13. THE CONTRACTOR SHALL CONFINE HIS/HER OPERATIONS TO THE AREA LOCATED WITHIN THE CONSTRUCTION LIMITS SHOWN ON THE PLANS. ANY AREA DISTURBED BEYOND THESE LIMITS SHALL BE RESTORED TO ITS ORIGINAL CONDITION AT NO ADDITIONAL COST TO THE DEPARTMENT.
14. DURING CONSTRUCTION OPERATIONS, IF ANY LOOSE MATERIAL IS DEPOSITED IN THE FLOW LINE OF DITCHES, GUTTERS OR DRAINAGE STRUCTURES SO THAT THE NATURAL FLOW OF WATER IS OBSTRUCTED, IT SHALL BE REMOVED AT THE CLOSE OF EACH WORKING DAY. AT THE CONCLUSION OF CONSTRUCTION OPERATIONS, ALL DRAINAGE STRUCTURES SO AFFECTED SHALL BE FREE FROM ALL DEBRIS. THIS WORK SHALL BE INCLUDED IN THE COST OF EARTH EXCAVATION.
15. ALL SAW CUTS THAT ARE INDICATED IN THE PLANS SHALL BE CONSIDERED INCLUDED IN THE PORTLAND CEMENT CONCRETE SIDEWALK AND NO ADDITIONAL COST WILL BE ALLOWED.
16. ALL AREAS OF SIDEWALK REMOVAL INDICATED IN THE PLANS WHERE NO SIDEWALK IS BEING RECONSTRUCTED SHALL HAVE CLEAN EARTHEN MATERIAL PLACED, GRADED AND SEEDED. THE COST OF THE REQUIRED EARTHEN MATERIAL SHALL BE CONSIDERED INCLUDED IN THE COST OF THE SIDEWALK REMOVAL AND NO ADDITIONAL COST WILL BE ALLOWED.
17. ANY NECESSARY TRENCH BACKFILL REQUIRED FOR INSTALLATION OF PIPE CULVERTS OR STORM SEWERS AS INDICATED IN THE PLANS SHALL BE INCLUDED IN THE COST OF THE CULVERT PIPE OR STORM SEWER AND NO ADDITIONAL COST WILL BE ALLOWED.

APPLICATION RATES:

FACTORS USED FOR ESTIMATING PLAN QUANTITIES ARE AS FOLLOWS AND SHALL NOT BE USED FOR THE BASIS OF FINAL QUANTITIES:

ALL HOT-MIX ASPHALT..... 112 LB/SO YD/INCH
 BITUMINOUS MATERIALS (TACK COAT)
 ON MILLED PAVEMENTS..... 0.05 LB/SO FT
 ALL AGGREGATE..... 2.05 TON/CU YD

TRAFFIC CONTROL

1. NO OVERNIGHT LANE CLOSURES WILL BE ALLOWED.
2. "ROAD CONSTRUCTION AHEAD" SIGNS SHALL BE PLACED AT THE BEGINNING AND END OF THE PROJECT AND ON THE INTERSECTING SIDE ROADS, AND SHALL BE INCLUDED IN THE TRAFFIC CONTROL PAY ITEMS. ALL CONSTRUCTION SIGNS SHALL BE (48x48) FLUORESCENT ORANGE.
3. FLAGMEN SHALL BE PRESENT DURING CLOSURE OF ANY ADJACENT TRAFFIC LANES AND NO ADDITIONAL COMPENSATION SHALL BE ALLOWED.
4. FOR STABILIZATION, ALL TYPE III BARRICADES SHALL REQUIRE A MINIMUM OF FOUR SANDBAGS PER BARRICADE.

UTILITY COORDINATION

ILLINOIS STATE LAW REQUIRES A 48 - HOUR NOTICE BE GIVEN TO ALL UTILITIES BEFORE DIGGING. FIELD MARKING OF FACILITIES MAY BE OBTAINED BY CONTACTING J.U.L.I.E. OR FOR NON-MEMBERS, THE UTILITY COMPANY DIRECTLY. AGENCIES KNOWN TO HAVE FACILITIES WITHIN THE PROJECT AREA ARE AS FOLLOWS:

- AMEREN CIPS - ELECTRIC
- FRONTIER COMMUNICATIONS - TELEPHONE
- NEW WAVE COMMUNICATIONS - FIBER COMMUNICATIONS
- CITY OF CARROLLTON - WATER
- CITY OF CARROLLTON - SEWER
- CITY OF CARROLLTON - GAS

MEMBERS OF J.U.L.I.E. (800-892-0123) ARE INDICATED BY AN *. NON-J.U.L.I.E. MEMBERS MUST BE NOTIFIED INDIVIDUALLY.

UNDERGROUND FACILITIES, STRUCTURES AND UTILITIES HAVE BEEN PLOTTED FROM AVAILABLE INFORMATION FURNISHED BY THE UTILITY OWNERS AND MUST BE CONSIDERED APPROXIMATE. IT IS POSSIBLE THERE MAY BE OTHERS, THE EXISTENCE OF WHICH IS NOT PRESENTLY KNOWN OR SHOWN. IT IS THE CONTRACTOR'S RESPONSIBILITY TO DETERMINE THEIR EXISTENCE AND EXACT LOCATION AND TO AVOID DAMAGE THERETO.

COMMITMENTS

COMMITMENTS FOR THIS PROJECT ARE AS FOLLOWS:

NONE

MIXTURE REQUIREMENTS

SECTION	19-00018-00-SW
COUNTY	GREENE
CONTRACT	97726

MIXTURE USE:	INCIDENTAL
AC/PG	PG 64-22
RAP% (MAX)	SEE SPEC. PROVISION
DESIGN AIR VOIDS	4.0% @ Ndes = 70
MIX COMPOSITION (GRADATION)	IL 9.5
FRICTION AGG	MIXTURE "C"
QUALITY MGMT PROGRAM	QC/OA

FILE NAME =	USER NAME = \$USER\$	DESIGNED -	REVISED -	CITY OF CARROLLTON SAFE ROUTES TO SCHOOLS PROGRAM	GENERAL NOTES	F.A. RTE.	SECTION	COUNTY	TOTAL SHEETS	SHEET NO.	
P:\19e3283\Design\Design\CADD Sheets\97	26-002-shit-general notes-commitments.dgn	DRAWN - M. McEVERS	REVISED -			19-00018-00-SW	GREENE	22	2		
Default	PLOT SCALE = 40.0000' / in.	CHECKED - W. SLEEMAN	REVISED -			CONTRACT NO. 97726					
	PLOT DATE = 1/22/2020	DATE - 10/2019	REVISED -			SCALE:	SHEET 1	OF 1	SHEETS	STA.	TO STA.

CODE NO.	ITEM	UNIT	TOTAL QUANTITY	CONST CODE
				0021
20200100	EARTH EXCAVATION	CU YD	148	148
25000100	SEEDING, CLASS 1	ACRE	0.25	0.25
25000400	NITROGEN FERTILIZER NUTRIENT	POUND	23	23
25000500	PHOSPHOROUS FERTILIZER NUTRIENT	POUND	23	23
25000600	POTASSIUM FERTILIZER NUTRIENT	POUND	23	23
25100115	MULCH, METHOD 2	ACRE	0.25	0.25
28000500	INLET AND PIPE PROTECTION	EACH	10	10
40200800	AGGREGATE SURFACE COURSE, TYPE B	TON	16	16
40600982	HOT-MIX ASPHALT SURFACE REMOVAL - BUTT JOINT	SQ YD	36	36
40600990	TEMPORARY RAMP	SQ YD	36	36
40800029	BITUMINOUS MATERIALS (TACK COAT)	POUND	37	37
40800050	INCIDENTAL HOT-MIX ASPHALT SURFACING	TON	11	11
42300200	PORTLAND CEMENT CONCRETE DRIVEWAY PAVEMENT, 6 INCH	SQ YD	36	36
42400800	DETECTABLE WARNINGS	SQ FT	180	180

(S) SEE SPECIAL PROVISIONS

FILE NAME :	USER NAME : #USER#	DESIGNED -	REVISED -	CITY OF CARROLLTON SAFE ROUTES TO SCHOOLS PROGRAM	SUMMARY OF QUANTITIES			F.A. RTE.	SECTION	COUNTY	TOTAL SHEETS	SHEET NO.
P:\19e3283\Design\Design\CADD Sheets\97	28-003-005-sht-500.dgn	DRAWN - M. McEVERS	REVISED -					19-00018-00-SW	GREENE	22	3	
Default	PLOT SCALE = 40.0000' / in.	CHECKED - W. SLEEMAN	REVISED -		SCALE: SHEET 1 OF 3 SHEETS STA. TO STA.			CONTRACT NO. 97726				
	PLOT DATE = 1/21/2020	DATE - 10/2019	REVISED -		ILLINOIS FED. AID PROJECT							

CODE NO.	ITEM	UNIT	TOTAL QUANTITY	CONST CODE
				0021
44000200	DRIVEWAY PAVEMENT REMOVAL	SQ YD	47	47
44000500	COMBINATION CURB AND GUTTER REMOVAL	FOOT	109	109
44000600	SIDEWALK REMOVAL	SQ FT	9047	9047
50104400	CONCRETE HEADWALL REMOVAL	EACH	4	4
50105220	PIPE CULVERT REMOVAL	FOOT	22	22
50901760	PIPE HANDRAIL	FOOT	46	46
542D0211	PIPE CULVERTS, CLASS D, TYPE 1 6"	FOOT	9	9
542D0213	PIPE CULVERTS, CLASS D, TYPE 1 8"	FOOT	9	9
542D0215	PIPE CULVERTS, CLASS D, TYPE 1 10"	FOOT	11	11
542D0217	PIPE CULVERTS, CLASS D, TYPE 1 12"	FOOT	13	13
542D0220	PIPE CULVERTS, CLASS D, TYPE 1 15"	FOOT	6	6
550B0050	STORM SEWERS, CLASS B, TYPE 1 12"	FOOT	96	96
60236200	INLETS, TYPE A, TYPE 8 GRATE	EACH	2	2
(S) 60605100	COMBINATION CONCRETE CURB AND GUTTER, TYPE B-6.24 (ABUTTING EXISTING PAVEMENT)	FOOT	109	109

(S) SEE SPECIAL PROVISIONS

FILE NAME = P:\19e3283\Design\Design\CADD Sheets\9726-003-005-shr-S00.dgn	USER NAME = sUSERs	DESIGNED -	REVISED -	CITY OF CARROLLTON SAFE ROUTES TO SCHOOLS PROGRAM	SUMMARY OF QUANTITIES				F.A. RTE.	SECTION	COUNTY	TOTAL SHEETS	SHEET NO.	
Default	PLOT SCALE = 40.0000' / in.	DRAWN - M. McEVERS	REVISED -		SCALE:	SHEET 2	OF 3	SHEETS	STA.	TO STA.	19-00018-00-SW	GREENE	22	4
	PLOT DATE = 1/21/2020	CHECKED - W. SLEEMAN	REVISED -		CONTRACT NO. 97726									
		DATE - 10/2019	REVISED -		ILLINOIS FED. AID PROJECT									

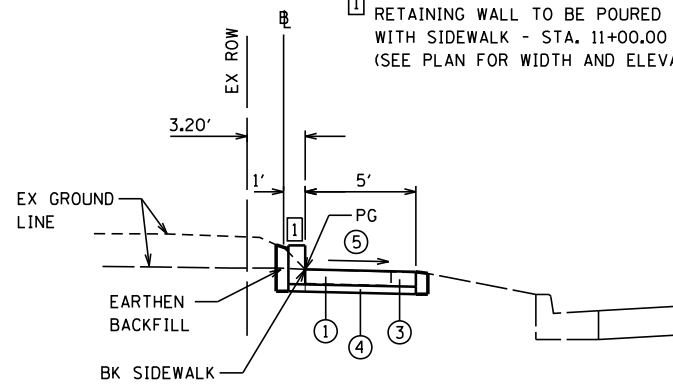
CODE NO.	ITEM	UNIT	TOTAL QUANTITY	CONST CODE
				0021
Δ (S) 66900200	NON-SPECIAL WASTE DISPOSAL	CU YD	10	10
Δ (S) 66900530	SOIL DISPOSAL ANALYSIS	EACH	1	1
Δ (S) 66901001	REGULATED SUBSTANCES PRE-CONSTRUCTION PLAN	L SUM	1	1
Δ (S) 66901003	REGULATED SUBSTANCES FINAL CONSTRUCTION REPORT	L SUM	1	1
Δ (S) 66901006	REGULATED SUBSTANCES MONITORING	CAL DAY	2	2
67100100	MOBILIZATION	L SUM	1	1
70102640	TRAFFIC CONTROL AND PROTECTION, STANDARD 701801	L SUM	1	1
(S) X1700063	CONCRETE HEADWALL (SPECIAL)	EACH	1	1
(S) X4240420	PORTLAND CEMENT CONCRETE SIDEWALK 4 INCH, SPECIAL	SQ FT	10,654	10,654
(S) X4240440	PORTLAND CEMENT CONCRETE SIDEWALK 6 INCH, SPECIAL	SQ FT	863	863
(S) X4401198	HOT-MIX ASPHALT SURFACE REMOVAL, VARIABLE DEPTH	SQ YD	46	46
(S) X7010216	TRAFFIC CONTROL AND PROTECTION, (SPECIAL)	L SUM	1	1
(S) Z0013798	CONSTRUCTION LAYOUT	L SUM	1	1

(S) SEE SPECIAL PROVISIONS Δ SPECIALTY ITEMS

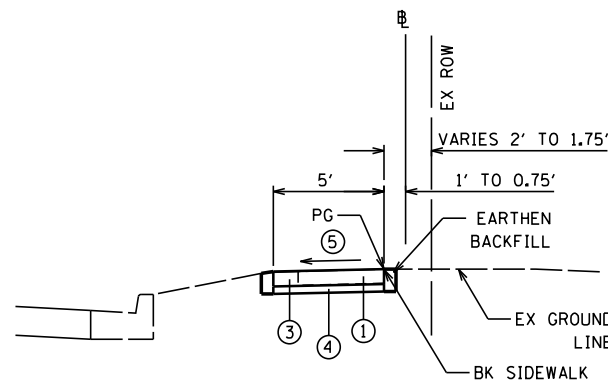
FILE NAME = P:\19e3283\Design\Design\CADD Sheets\97	USER NAME = #USER# 26-003-005-shr-500.dgn	DESIGNED - M. McEVERS	REVISED - 1/27/2020	CITY OF CARROLLTON SAFE ROUTES TO SCHOOLS PROGRAM	SUMMARY OF QUANTITIES				F.A. RTE.	SECTION	COUNTY	TOTAL SHEETS	SHEET NO.	
Default	PLOT SCALE = 40.0000' / 1" =	CHECKED - W. SLEEMAN	REVISED -		SCALE:	SHEET 3	OF 3	SHEETS	STA.	TO STA.	19-00018-00-SW	GREENE	22	5
	PLOT DATE = 1/27/2020	DATE - 10/2019	REVISED -		CONTRACT NO. 97726									
											ILLINOIS FED. AID PROJECT			

NOTE:

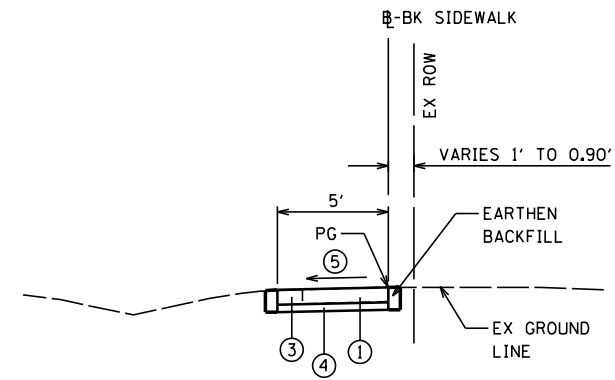
① RETAINING WALL TO BE POURED MONOLITHICALLY WITH SIDEWALK - STA. 11+00.00 TO 12+00.00 (SEE PLAN FOR WIDTH AND ELEVATION)



**TYPICAL SIDEWALK SECTION
FIFTH STREET (WEST SIDE)**
STA. 10+63.31 TO STA. 12+06.60
(EXCEPT TRANSITIONS)



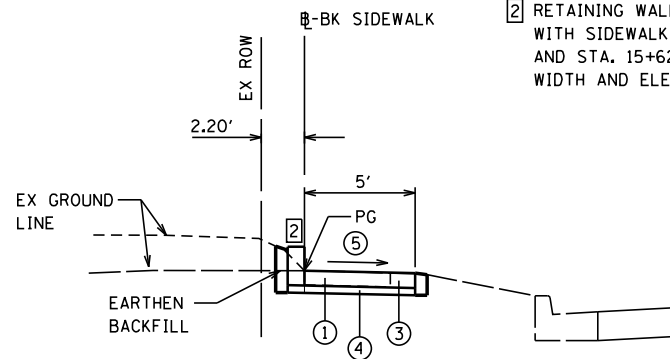
**TYPICAL SIDEWALK SECTION
FIFTH STREET (EAST SIDE)**
STA. 20+62.16 TO STA. 22+16.23
(EXCEPT TRANSITIONS)



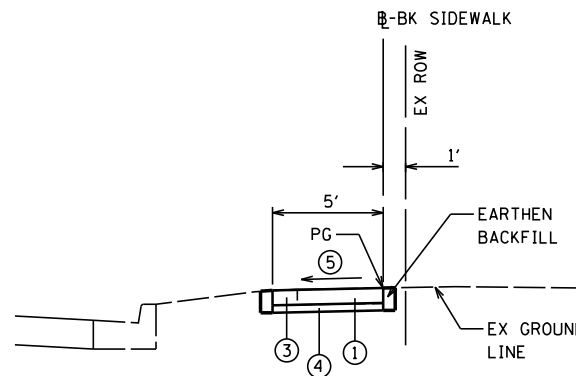
**TYPICAL SIDEWALK SECTION
SYCAMORE STREET**
STA. 40+00.00 TO STA. 42+74.50
(EXCEPT TRANSITIONS)

NOTE:

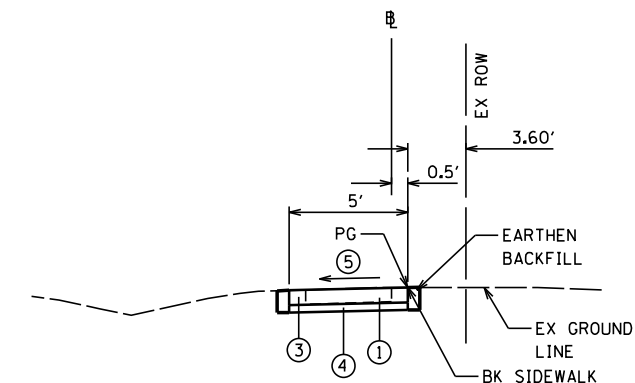
② RETAINING WALL TO BE POURED MONOLITHICALLY WITH SIDEWALK - STA. 15+14.00 TO 15+51.80 AND STA. 15+62.00 TO 15+83.00. (SEE PLAN FOR WIDTH AND ELEVATION)



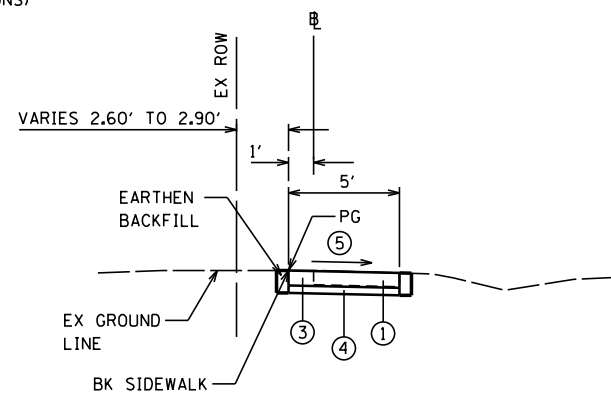
**TYPICAL SIDEWALK SECTION
FIFTH STREET (WEST SIDE)**
STA. 14+51.50 TO STA. 17+95.10
(EXCEPT TRANSITIONS)



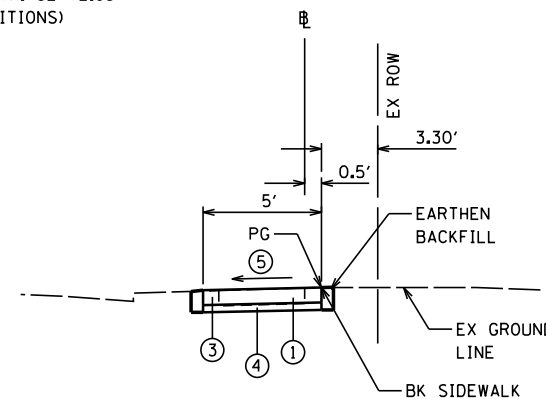
**TYPICAL SIDEWALK SECTION
FIFTH STREET (EAST SIDE)**
STA. 28+08.00 TO STA. 32+72.83
(EXCEPT TRANSITIONS)



**TYPICAL SIDEWALK SECTION
FOURTH STREET**
STA. 50+34.60 TO STA. 53+61.00
(EXCEPT TRANSITIONS)



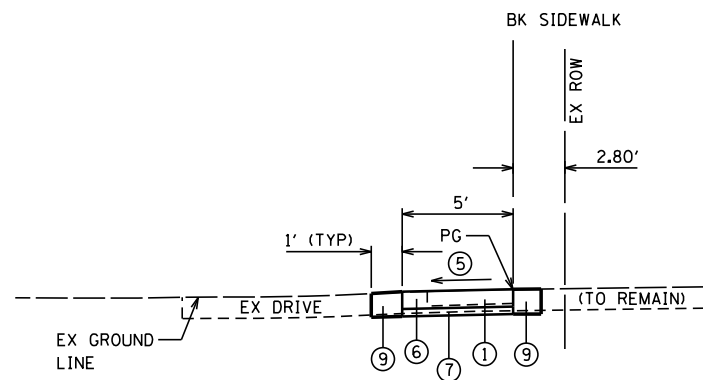
**TYPICAL SIDEWALK SECTION
S. MAIN STREET (NORTH SIDE)**
STA. 60+25.50 TO STA. 63+09.50
(EXCEPT TRANSITIONS)



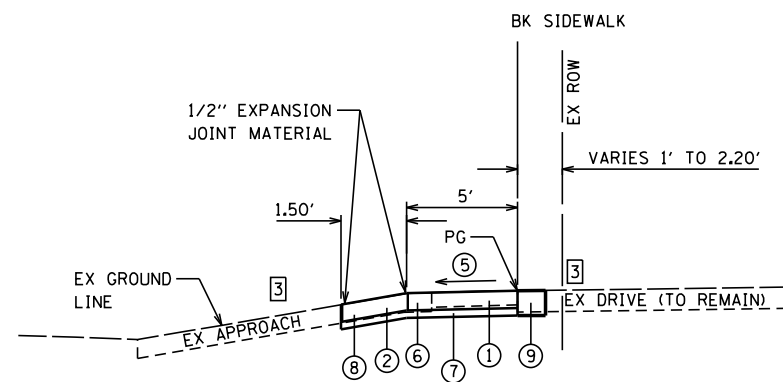
**TYPICAL SIDEWALK SECTION
S. MAIN STREET (SOUTH SIDE)**
STA. 70+81.00 TO STA. 73+16.00
(EXCEPT TRANSITIONS)

- ① EXISTING CONCRETE SIDEWALK (TO BE REMOVED UNLESS NOTED OTHERWISE)
- ② EXISTING DRIVEWAY PAVEMENT (TO BE REMOVED UNLESS NOTED OTHERWISE)
- ③ PROPOSED PORTLAND CEMENT CONCRETE SIDEWALK 4 INCH, SPECIAL
- ④ PROPOSED FINE AGGREGATE SUBBASE, 2" (COST TO BE INCLUDED IN PCC SIDEWALK)
- ⑤ CROSS SLOPE AS SHOWN ON PLANS (2% MAX)
- ⑥ PROPOSED PORTLAND CEMENT CONCRETE SIDEWALK 6 INCH, SPECIAL
- ⑦ PROPOSED COARSE AGGREGATE SUBBASE, 2" (COST TO BE INCLUDED IN PCC SIDEWALK AND DRIVEWAY PAVEMENT)
- ⑧ PROPOSED PORTLAND CEMENT CONCRETE DRIVEWAY PAVEMENT, 6 INCH
- ⑨ PROPOSED AGGREGATE SURFACE COURSE, TYPE B, 8"
- ⑩ PROPOSED AGGREGATE SURFACE COURSE, TYPE B, 6" W/INCIDENTAL HMA SURFACE, 2"

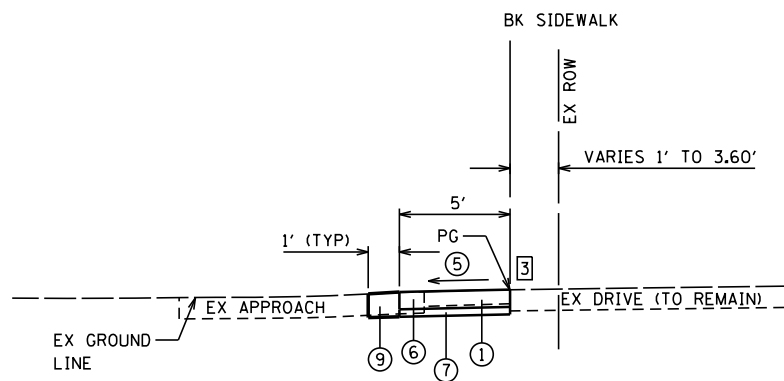
FILE NAME =	USER NAME = \$USER\$	DESIGNED -	REVISED -	CITY OF CARROLLTON SAFE ROUTES TO SCHOOLS PROGRAM	TYPICAL SECTIONS			F.A. RTÉ.	SECTION	COUNTY	TOTAL SHEETS	SHEET NO.
P:\19e3283\Design\CADD Sheets\97	26-006-007-sht-typicals.dgn	DRAWN - M. McEVERS	REVISED -					19-00018-00-SW	GREENE	22	6	
Default	PLOT SCALE = 40.0000' / in.	CHECKED - W. SLEEMAN	REVISED -		SCALE: SHEET 1 OF 2 SHEETS STA. TO STA.			CONTRACT NO. 97726				
	PLOT DATE = 1/21/2020	DATE - 10/2019	REVISED -		ILLINOIS FED. AID PROJECT							



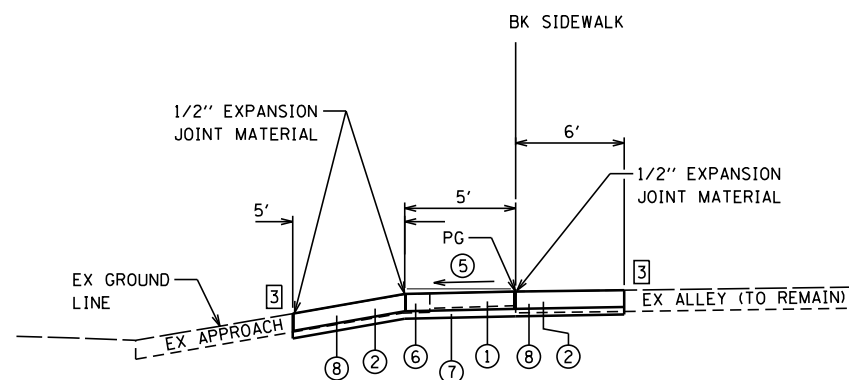
TYPICAL SIDEWALK SECTION - ACROSS AGGREGATE ENTRANCES
(EXCEPT TRANSITIONS)



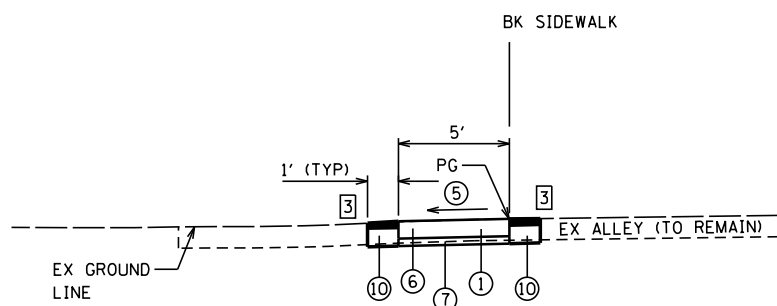
TYPICAL SIDEWALK SECTION - ACROSS AGGREGATE ENTRANCES WITH CONCRETE APPROACH
(EXCEPT TRANSITIONS)



TYPICAL SIDEWALK SECTION - ACROSS CONCRETE ENTRANCES WITH AGGREGATE APPROACH
(EXCEPT TRANSITIONS)



TYPICAL SIDEWALK SECTION - ACROSS BITUMINOUS TREATED ALLEY WITH CONCRETE APPROACH
(EXCEPT TRANSITIONS)



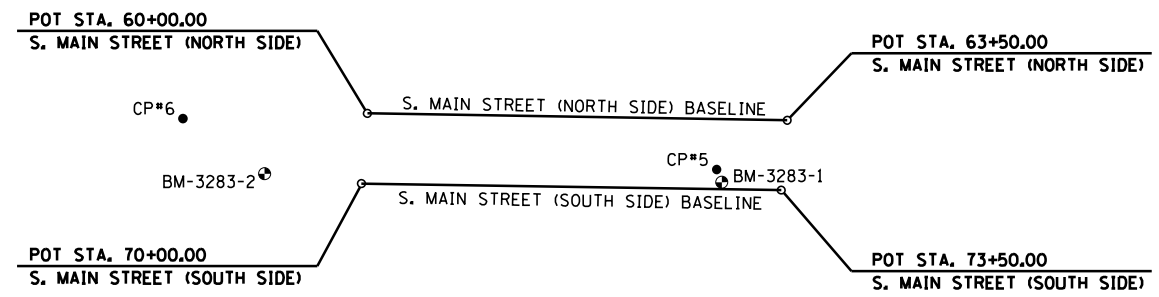
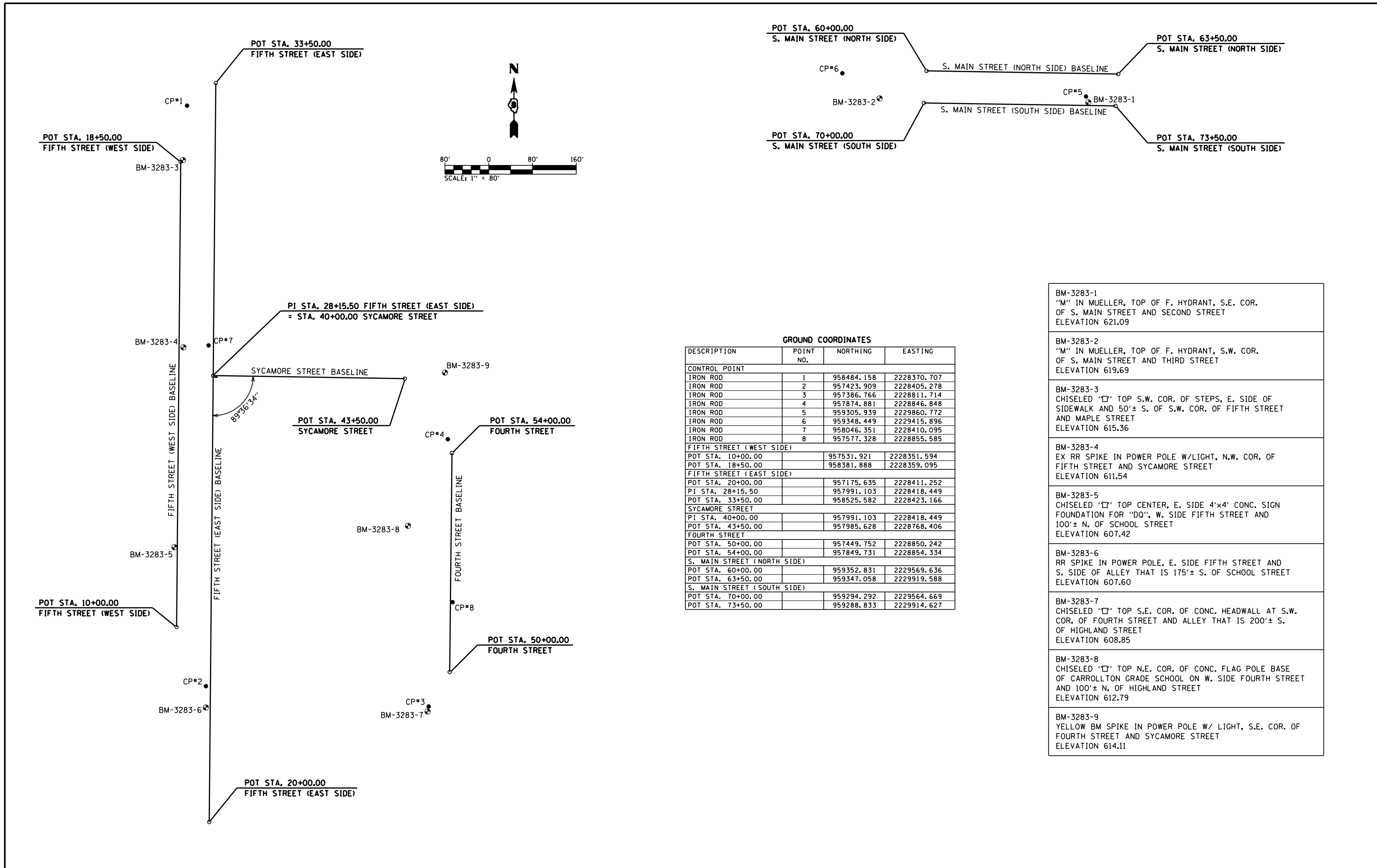
TYPICAL SIDEWALK SECTION - ACROSS BITUMINOUS TREATED ALLEY
(EXCEPT TRANSITIONS)

NOTE:

3 SAW CUT EXISTING ALLEY SURFACE AND CONCRETE APPROACHES ONLY. COST OF SAW CUTTING SHALL BE INCLUDED IN COST OF DRIVEWAY PAVEMENT REMOVAL.

- 1 EXISTING CONCRETE SIDEWALK (TO BE REMOVED UNLESS NOTED OTHERWISE)
- 2 EXISTING DRIVEWAY PAVEMENT (TO BE REMOVED UNLESS NOTED OTHERWISE)
- 3 PROPOSED PORTLAND CEMENT CONCRETE SIDEWALK 4 INCH, SPECIAL
- 4 PROPOSED FINE AGGREGATE SUBBASE, 2" (COST TO BE INCLUDED IN PCC SIDEWALK)
- 5 CROSS SLOPE AS SHOWN ON PLANS (2% MAX)
- 6 PROPOSED PORTLAND CEMENT CONCRETE SIDEWALK 6 INCH, SPECIAL
- 7 PROPOSED COARSE AGGREGATE SUBBASE, 2" (COST TO BE INCLUDED IN PCC SIDEWALK AND DRIVEWAY PAVEMENT)
- 8 PROPOSED PORTLAND CEMENT CONCRETE DRIVEWAY PAVEMENT, 6 INCH
- 9 PROPOSED AGGREGATE SURFACE COURSE, TYPE B, 8"
- 10 PROPOSED AGGREGATE SURFACE COURSE, TYPE B, 6" W/INCIDENTAL HMA SURFACE, 2"

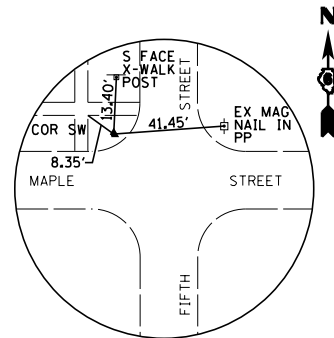
FILE NAME =	USER NAME = \$USER\$	DESIGNED -	REVISED -	CITY OF CARROLLTON SAFE ROUTES TO SCHOOLS PROGRAM	TYPICAL SECTIONS			F.A. RTE.	SECTION	COUNTY	TOTAL SHEETS	SHEET NO.
P:\19e3283\Design\Design\CADD Sheets\97	26-006-007-sht-typicals.dgn	DRAWN - M. McEVERS	REVISED -					19-0018-00-SW	GREENE	22	7	
Default	PLOT SCALE = 40.0000' / in.	CHECKED - W. SLEEMAN	REVISED -		SCALE: SHEET 2 OF 2 SHEETS STA. TO STA.			CONTRACT NO. 97726		ILLINOIS FED. AID PROJECT		
	PLOT DATE = 1/21/2020	DATE - 10/2019	REVISED -									



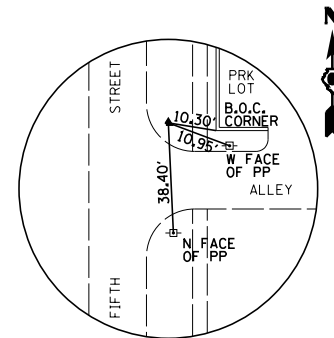
GROUND COORDINATES

DESCRIPTION	POINT NO.	NORTHING	EASTING
CONTROL POINT			
IRON ROD	1	958484.158	2228370.707
IRON ROD	2	957423.909	2228405.278
IRON ROD	3	957386.766	2228811.714
IRON ROD	4	957874.881	2228846.848
IRON ROD	5	959305.939	2229860.772
IRON ROD	6	959348.449	2229415.896
IRON ROD	7	958046.351	2228410.095
IRON ROD	8	957577.328	2228855.585
FIFTH STREET (WEST SIDE)			
POT STA. 10+00.00		957531.921	2228351.594
POT STA. 18+50.00		958381.888	2228359.095
FIFTH STREET (EAST SIDE)			
POT STA. 20+00.00		957175.635	2228411.252
PI STA. 28+15.50		957991.103	2228418.449
POT STA. 33+50.00		958525.582	2228423.166
SYCAMORE STREET			
PI STA. 40+00.00		957991.103	2228418.449
POT STA. 43+50.00		957985.628	2228768.406
FOURTH STREET			
POT STA. 50+00.00		957449.752	2228850.242
POT STA. 54+00.00		957849.731	2228854.334
S. MAIN STREET (NORTH SIDE)			
POT STA. 60+00.00		959352.831	2229569.636
POT STA. 63+50.00		959347.058	2229919.588
S. MAIN STREET (SOUTH SIDE)			
POT STA. 70+00.00		959294.292	2229564.669
POT STA. 73+50.00		959288.833	2229914.627

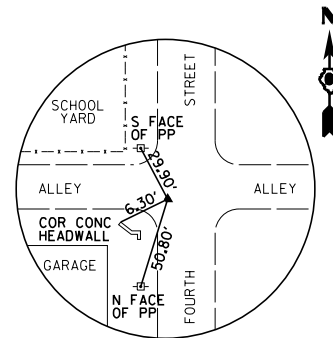
- BM-3283-1
'M' IN MUELLER, TOP OF F. HYDRANT, S.E. COR. OF S. MAIN STREET AND SECOND STREET
ELEVATION 621.09
- BM-3283-2
'M' IN MUELLER, TOP OF F. HYDRANT, S.W. COR. OF S. MAIN STREET AND THIRD STREET
ELEVATION 619.69
- BM-3283-3
CHISELED '□' TOP S.W. COR. OF STEPS, E. SIDE OF SIDEWALK AND 50'± S. OF S.W. COR. OF FIFTH STREET AND MAPLE STREET
ELEVATION 615.36
- BM-3283-4
EX RR SPIKE IN POWER POLE W/LIGHT, N.W. COR. OF FIFTH STREET AND SYCAMORE STREET
ELEVATION 611.54
- BM-3283-5
CHISELED '□' TOP CENTER, E. SIDE 4'x4' CONC. SIGN FOUNDATION FOR 'DO', W. SIDE FIFTH STREET AND 100'± N. OF SCHOOL STREET
ELEVATION 607.42
- BM-3283-6
RR SPIKE IN POWER POLE, E. SIDE FIFTH STREET AND S. SIDE OF ALLEY THAT IS 175'± S. OF SCHOOL STREET
ELEVATION 607.60
- BM-3283-7
CHISELED '□' TOP S.E. COR. OF CONC. HEADWALL AT S.W. COR. OF FOURTH STREET AND ALLEY THAT IS 200'± S. OF HIGHLAND STREET
ELEVATION 608.85
- BM-3283-8
CHISELED '□' TOP N.E. COR. OF CONC. FLAG POLE BASE OF CARROLLTON GRADE SCHOOL ON W. SIDE FOURTH STREET AND 100'± N. OF HIGHLAND STREET
ELEVATION 612.79
- BM-3283-9
YELLOW BM SPIKE IN POWER POLE W/ LIGHT, S.E. COR. OF FOURTH STREET AND SYCAMORE STREET
ELEVATION 614.11



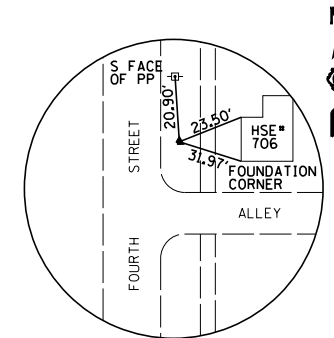
CONTROL POINT #1
SET 1/2" IRON ROD



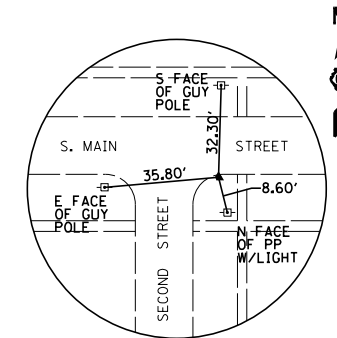
CONTROL POINT #2
SET 1/2" IRON ROD



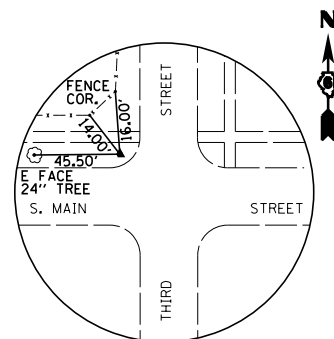
CONTROL POINT #3
SET MAG NAIL



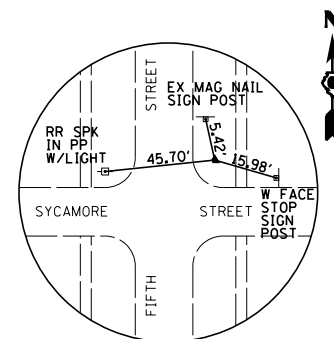
CONTROL POINT #4
SET 1/2" IRON ROD



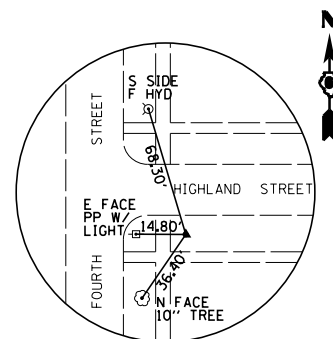
CONTROL POINT #5
SET 1/2" IRON ROD



CONTROL POINT #6
SET 1/2" IRON ROD



CONTROL POINT #7
SET 1/2" IRON ROD

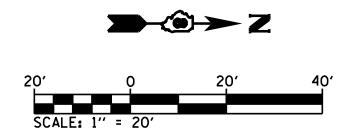
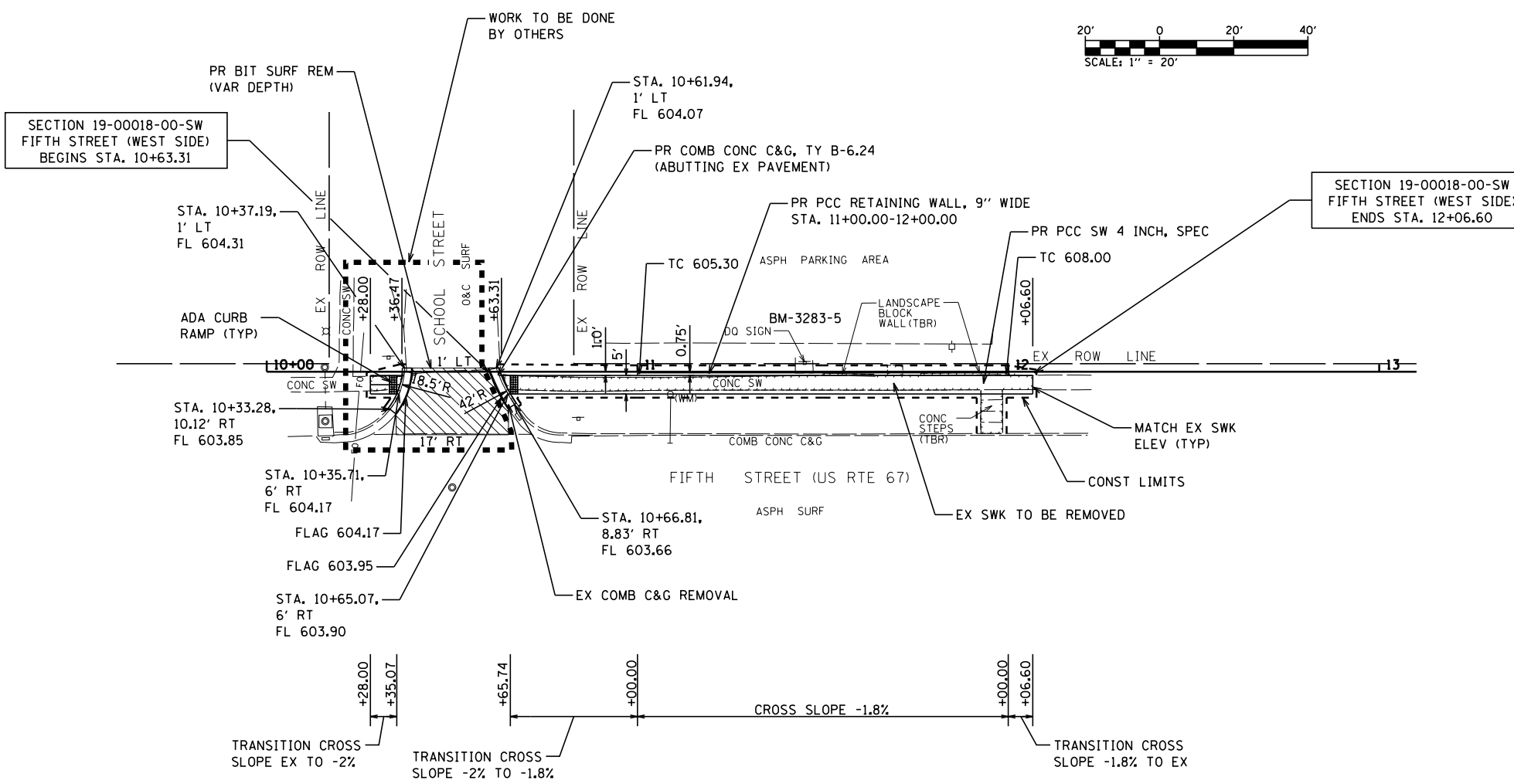


CONTROL POINT #8
SET 1/2" IRON ROD

FILE NAME =	USER NAME = \$USER\$	DESIGNED -	REVISED -	CITY OF CARROLLTON SAFE ROUTES TO SCHOOLS PROGRAM	CONTROL TIES			F.A. RTE.	SECTION	COUNTY	TOTAL SHEETS	SHEET NO.	
P:\19e3283\Design\Design\CADD Sheets\97	26-009-shr-ATB2.dgn	DRAWN - M. McEVERS	REVISED -		SCALE:	SHEET 1	OF 1	SHEETS	STA.	TO STA.	19-00018-00-SW	22	9
Default	PLOT SCALE = 160.0000' / in.	CHECKED - W. SLEEMAN	REVISED -		CONTRACT NO. 97726								
	PLOT DATE = 1/21/2020	DATE - 10/2019	REVISED -		ILLINOIS FED. AID PROJECT								

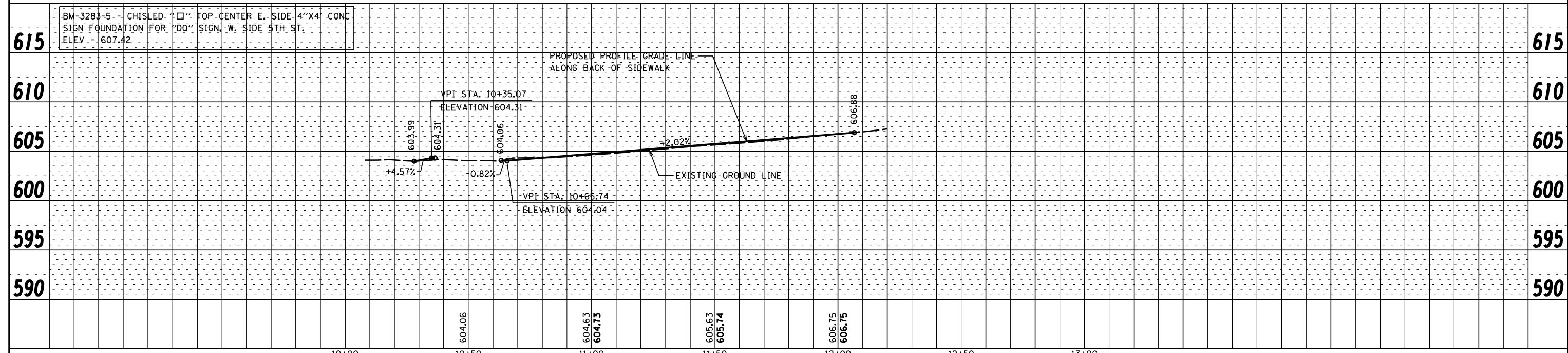
DATE	
BY	
SURVEYED	
PLOTTED	
ALIGNED	
CHECKED	
FILE NAME	
PLAN	
NOTE BOOK	
NO.	

DATE	
BY	
SURVEYED	
PLOTTED	
GRADES CHECKED	
STRUCTURE	
NOTATIS	
PROFILE	
NOTE BOOK	
NO.	



TOTALS THIS SHEET

EARTH EXCAVATION	- 9.1 CY
SEEDING, CLASS 1	- 0.02 AC
NITROGEN FERTILIZER NUTRIENT	- 1.8 LB
PHOSPHORUS FERTILIZER NUTRIENT	- 1.8 LB
POTASSIUM FERTILIZER NUTRIENT	- 1.8 LB
MULCH, METHOD 2	- 0.02 AC
INCIDENTAL HMA SURFACING	- 0.3 TON
PC CONCRETE SIDEWALK 4 INCH, SPEC	- 786 SF
DETECTABLE WARNINGS	- 10 SF
COMB CURB AND GUTTER REMOVAL	- 11 FT
SIDEWALK REMOVAL	- 566.8 SF
COMB CONC C&G, TY B-6.24 (ABUTTING EX PVMT)	- 11 FT

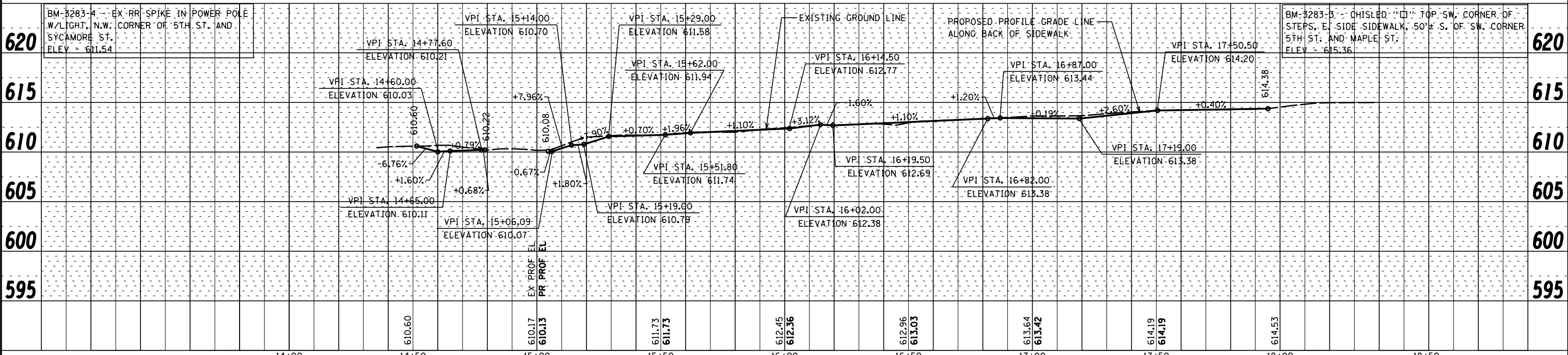
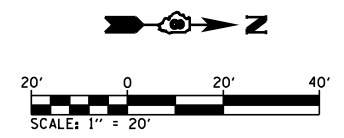
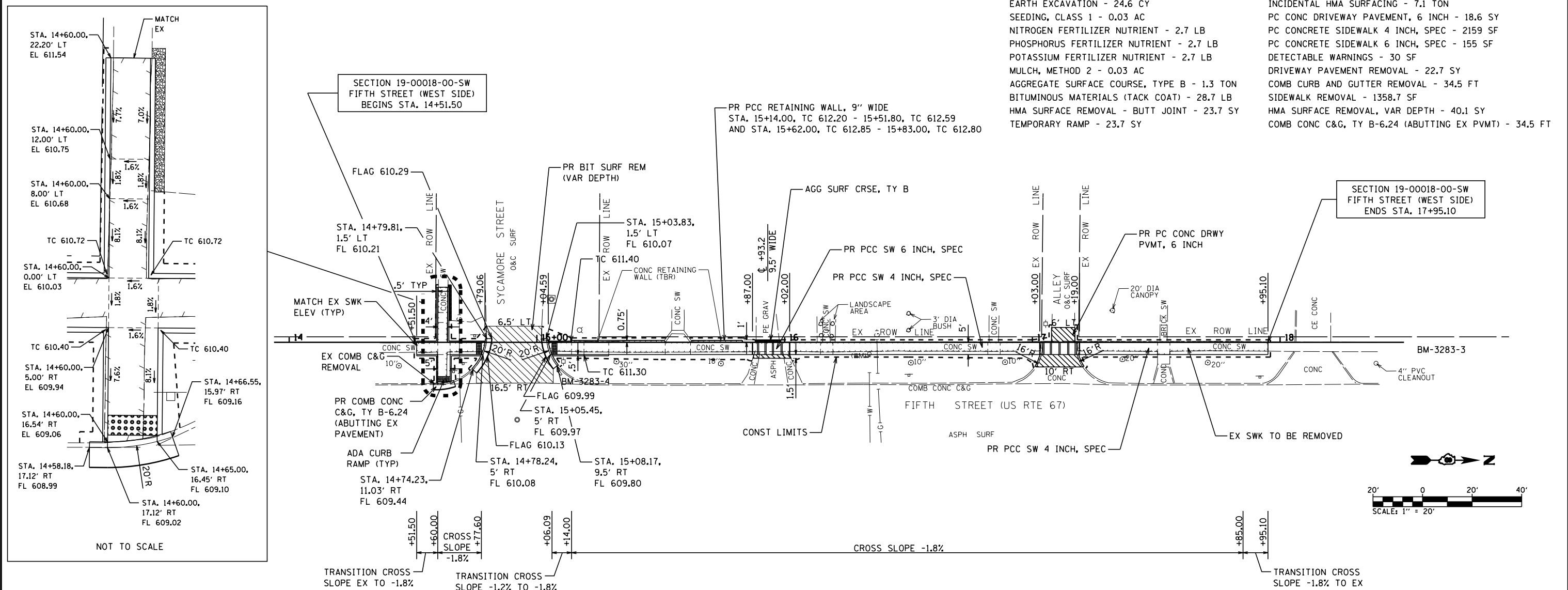


FILE NAME =	USER NAME = \$USER\$	DESIGNED - M. McEvers	REVISED -	CITY OF CARROLLTON SAFE ROUTES TO SCHOOLS PROGRAM	PLAN AND PROFILE FIFTH STREET (WEST SIDE)	F.A. RTE.	SECTION	COUNTY	TOTAL SHEETS	SHEET NO.
P:\19e3283\Design\Design\CADD Sheets\97726-010-shr-plnprf-5th wside 10-13.dgn	DRAWN - M. McEvers	REVISED -				19-00018-00-SW	GREENE	22	10	
Default	PLOT SCALE = 40.000' / in.	CHECKED - W. Sleeman	REVISED -			CONTRACT NO. 97726			ILLINOIS FED. AID PROJECT	
	PLOT DATE = 2/4/2020	DATE - 10/2019	REVISED -			SCALE:	SHEET 1 OF 2 SHEETS	STA. 10+00.00 TO STA. 13+00.00		

- EARTH EXCAVATION - 24.6 CY
- SEEDING, CLASS 1 - 0.03 AC
- NITROGEN FERTILIZER NUTRIENT - 2.7 LB
- PHOSPHORUS FERTILIZER NUTRIENT - 2.7 LB
- POTASSIUM FERTILIZER NUTRIENT - 2.7 LB
- MULCH, METHOD 2 - 0.03 AC
- AGGREGATE SURFACE COURSE, TYPE B - 1.3 TON
- BITUMINOUS MATERIALS (TACK COAT) - 28.7 LB
- HMA SURFACE REMOVAL - BUTT JOINT - 23.7 SY
- TEMPORARY RAMP - 23.7 SY
- INCIDENTAL HMA SURFACING - 7.1 TON
- PC CONC DRIVEWAY PAVEMENT, 6 INCH - 18.6 SY
- PC CONCRETE SIDEWALK 4 INCH, SPEC - 2159 SF
- PC CONCRETE SIDEWALK 6 INCH, SPEC - 155 SF
- DETECTABLE WARNINGS - 30 SF
- DRIVEWAY PAVEMENT REMOVAL - 22.7 SY
- COMB CURB AND GUTTER REMOVAL - 34.5 FT
- SIDEWALK REMOVAL - 1358.7 SF
- HMA SURFACE REMOVAL, VAR DEPTH - 40.1 SY
- COMB CONC C&G, TY B-6.24 (ABUTTING EX PVMT) - 34.5 FT

DATE	
BY	
PLAN	SURVEYED
	PLOTTED
	ALIGNED
	CHECKED
	DESIGNED
	NO. _____

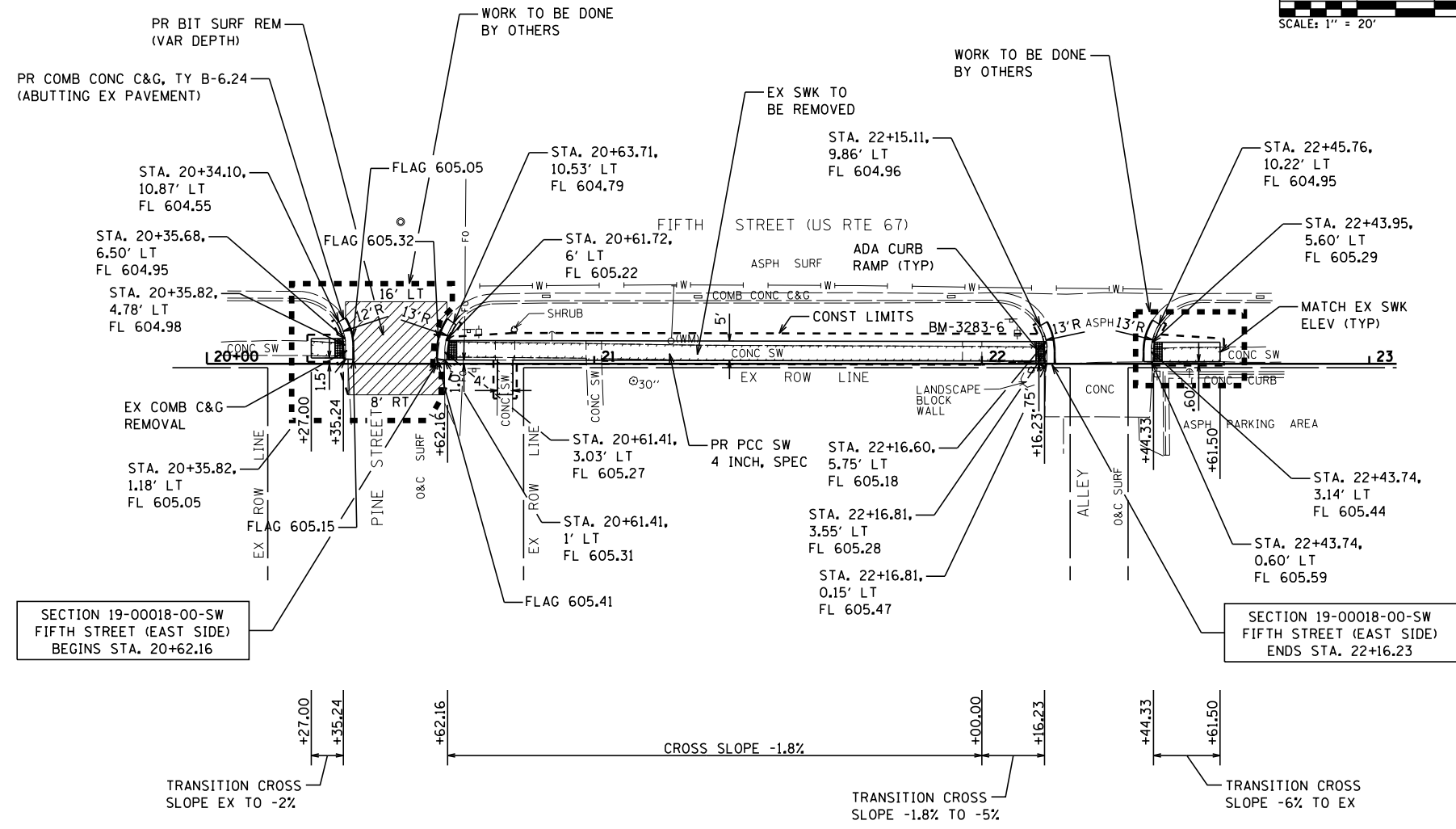
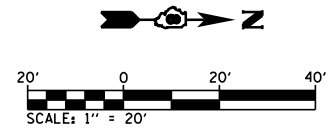
DATE	
BY	
PROFILE	SURVEYED
	PLOTTED
	GRADES CHECKED
	STRUCTURE NOTATIONS CHECKED
	NO. _____



FILE NAME =	USER NAME = \$USER\$	DESIGNED - M. McEvers	REVISED -	CITY OF CARROLLTON SAFE ROUTES TO SCHOOLS PROGRAM	PLAN AND PROFILE FIFTH STREET (WEST SIDE)	F.A. RTE.	SECTION	COUNTY	TOTAL SHEETS	SHEET NO.
P:\19e3283\Design\Design\CADD Sheets\97726-011-sht-plnprf-5th side 14-18.dgn	DRAWN - M. McEvers	REVISOR -	19-00018-00-SW			GREENE	22	11		
PLOT SCALE = 48.000' / in.	CHECKED - W. Sleeman	REVISOR -	CONTRACT NO. 97726							
Default	DATE - 10/2019	REVISOR -	ILLINOIS FED. AID PROJECT							

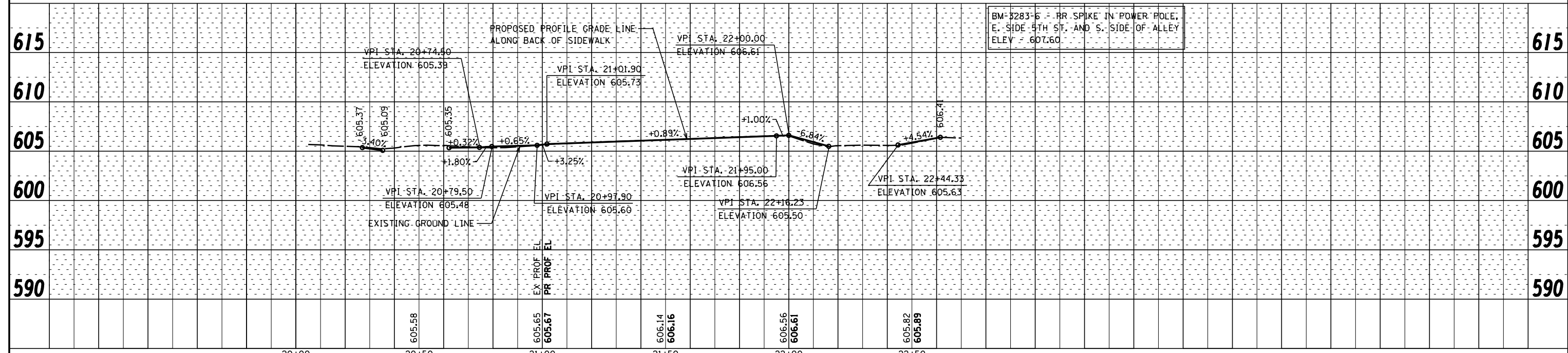
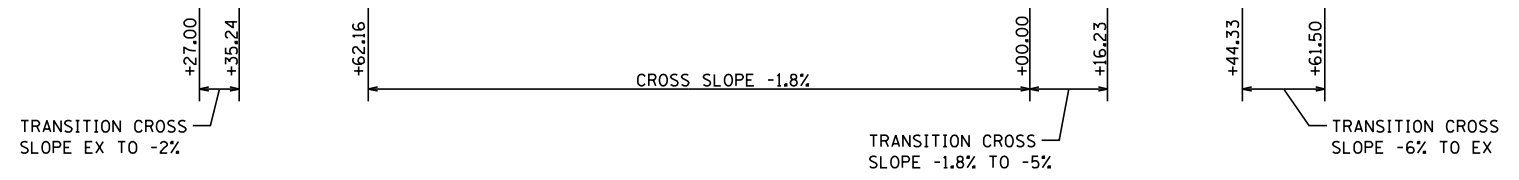
DATE	
BY	
PLAN	SURVEYED
	PLOTTED
	ALIGNED
	CHECKED
	FILED
	NO.
	FILE NAME

DATE	
BY	
PROFILE	SURVEYED
	PLOTTED
	GRADES CHECKED
	STRUCTURE NOTATIONS CHECKED
	NO.
	FILE NAME



SECTION 19-00018-00-SW
FIFTH STREET (EAST SIDE)
BEGINS STA. 20+62.16

SECTION 19-00018-00-SW
FIFTH STREET (EAST SIDE)
ENDS STA. 22+16.23



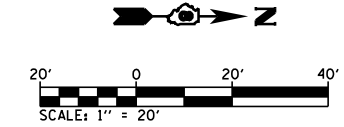
BM-3283-6 - RR SPIKE IN POWER POLE,
E. SIDE 5TH ST. AND S. SIDE OF ALLEY
ELEV = 607.60

FILE NAME =	USER NAME = \$USER\$	DESIGNED - M. McEvers	REVISED -	CITY OF CARROLLTON SAFE ROUTES TO SCHOOLS PROGRAM	PLAN AND PROFILE FIFTH STREET (EAST SIDE)	F.A. RTÉ.	SECTION	COUNTY	TOTAL SHEETS	SHEET NO.
P:\19e3283\Design\Design\CADD Sheets\97726-012-shr-plnprf-5th eside 20-23.dgn		DRAWN - M. McEvers	REVISED -			19-00018-00-SW	GREENE	22	12	
Default	PLOT SCALE = 40.000' / in.	CHECKED - W. Sleeman	REVISED -			CONTRACT NO. 97726			ILLINOIS FED. AID PROJECT	
	PLOT DATE = 2/4/2020	DATE - 10/2019	REVISED -			SCALE:	SHEET 1 OF 2 SHEETS	STA. 20+00.00 TO STA. 23+00.00		

- TOTALS THIS SHEET**
- EARTH EXCAVATION - 6.7 CY
 - SEEDING, CLASS 1 - 0.02 AC
 - NITROGEN FERTILIZER NUTRIENT - 1.8 LB
 - PHOSPHORUS FERTILIZER NUTRIENT - 1.8 LB
 - POTASSIUM FERTILIZER NUTRIENT - 1.8 LB
 - MULCH, METHOD 2 - 0.02 AC
 - INCIDENTAL HMA SURFACING - 0.5 TON
 - PC CONCRETE SIDEWALK 4 INCH, SPEC - 302.8 SF
 - DETECTABLE WARNINGS - 20 SF
 - COMB CURB AND GUTTER REMOVAL - 20 FT
 - SIDEWALK REMOVAL - 649.3 SF
 - COMB CONC C&G, TY B-6.24 (ABUTTING EX PVMT) - 20 FT

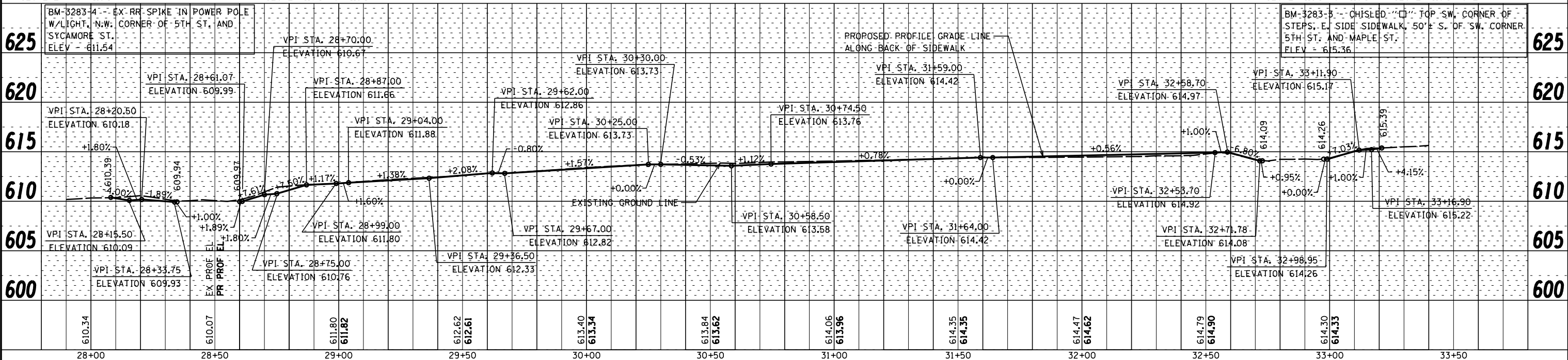
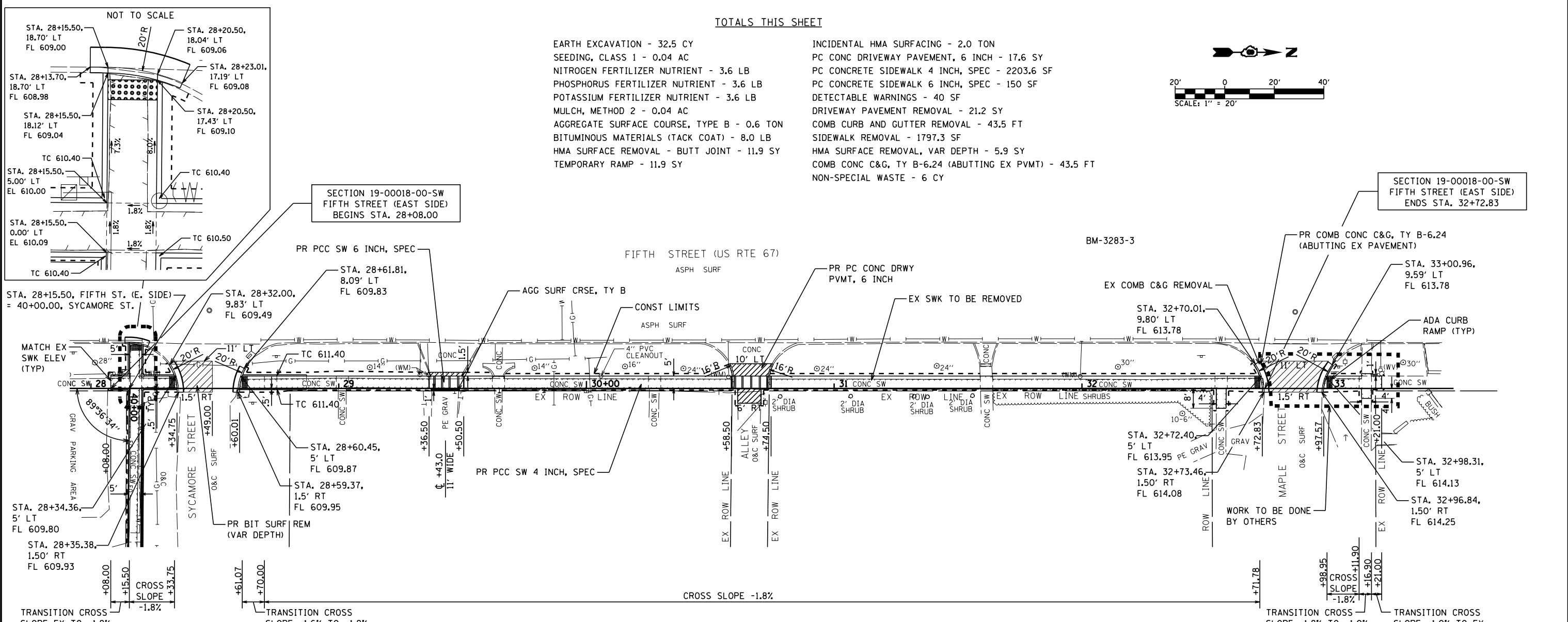
TOTALS THIS SHEET

- EARTH EXCAVATION - 32.5 CY
- SEEDING, CLASS 1 - 0.04 AC
- NITROGEN FERTILIZER NUTRIENT - 3.6 LB
- PHOSPHORUS FERTILIZER NUTRIENT - 3.6 LB
- POTASSIUM FERTILIZER NUTRIENT - 3.6 LB
- MULCH, METHOD 2 - 0.04 AC
- AGGREGATE SURFACE COURSE, TYPE B - 0.6 TON
- BITUMINOUS MATERIALS (TACK COAT) - 8.0 LB
- HMA SURFACE REMOVAL - BUTT JOINT - 11.9 SY
- TEMPORARY RAMP - 11.9 SY
- INCIDENTAL HMA SURFACING - 2.0 TON
- PC CONC DRIVEWAY PAVEMENT, 6 INCH - 17.6 SY
- PC CONCRETE SIDEWALK 4 INCH, SPEC - 2203.6 SF
- PC CONCRETE SIDEWALK 6 INCH, SPEC - 150 SF
- DETECTABLE WARNINGS - 40 SF
- DRIVEWAY PAVEMENT REMOVAL - 21.2 SY
- COMB CURB AND GUTTER REMOVAL - 43.5 FT
- SIDEWALK REMOVAL - 1797.3 SF
- HMA SURFACE REMOVAL, VAR DEPTH - 5.9 SY
- COMB CONC C&G, TY B-6.24 (ABUTTING EX PVMT) - 43.5 FT
- NON-SPECIAL WASTE - 6 CY



DATE	
BY	
PLAN	SURVEYED
	PLOTTED
	ALIGNED
	CHECKED
	FILED
	NO.
	NO.
	NO.
	NO.

DATE	
BY	
PROFILE	SURVEYED
	PLOTTED
	GRADES CHECKED
	STRUCTURE NOTATIONS OK'D
	NO.
	NO.
	NO.
	NO.



FILE NAME =	USER NAME = \$USER\$	DESIGNED - M. McEvers	REVISED -	<p align="center">CITY OF CARROLLTON SAFE ROUTES TO SCHOOLS PROGRAM</p>	<p align="center">PLAN AND PROFILE FIFTH STREET (EAST SIDE)</p>	F.A. RTÉ.	SECTION	COUNTY	TOTAL SHEETS	SHEET NO.
P:\19e3283\Design\Design\CADD Sheets\97726-013-shr-plnprf-5th_eshd_28-33.dgn		DRAWN - M. McEvers	REVISED -			19-00018-00-SW	GREENE	22	13	
PLOT SCALE = 48.000' / in.		CHECKED - W. Sleeman	REVISED -			CONTRACT NO. 97726				
Default		DATE - 10/2019	REVISED -			ILLINOIS FED. AID PROJECT				
		SCALE:	SHEET 2 OF 2 SHEETS		STA. 28+00.00 TO STA. 33+50.00					

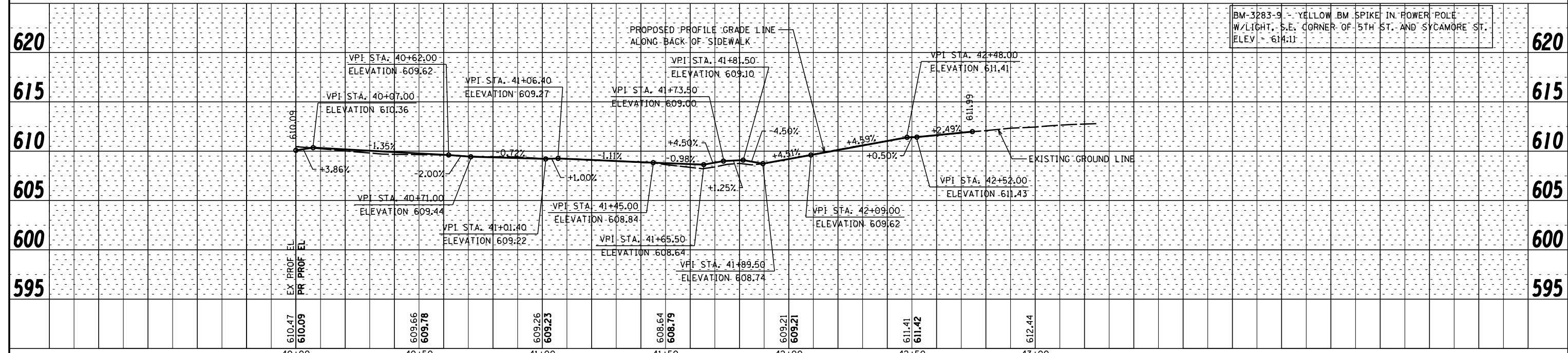
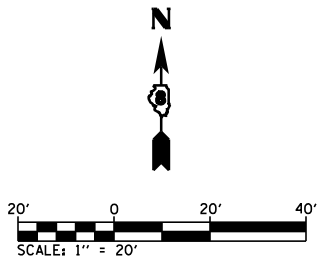
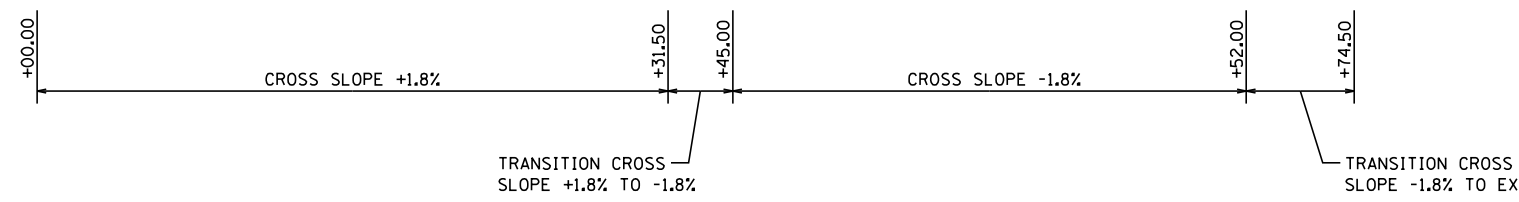
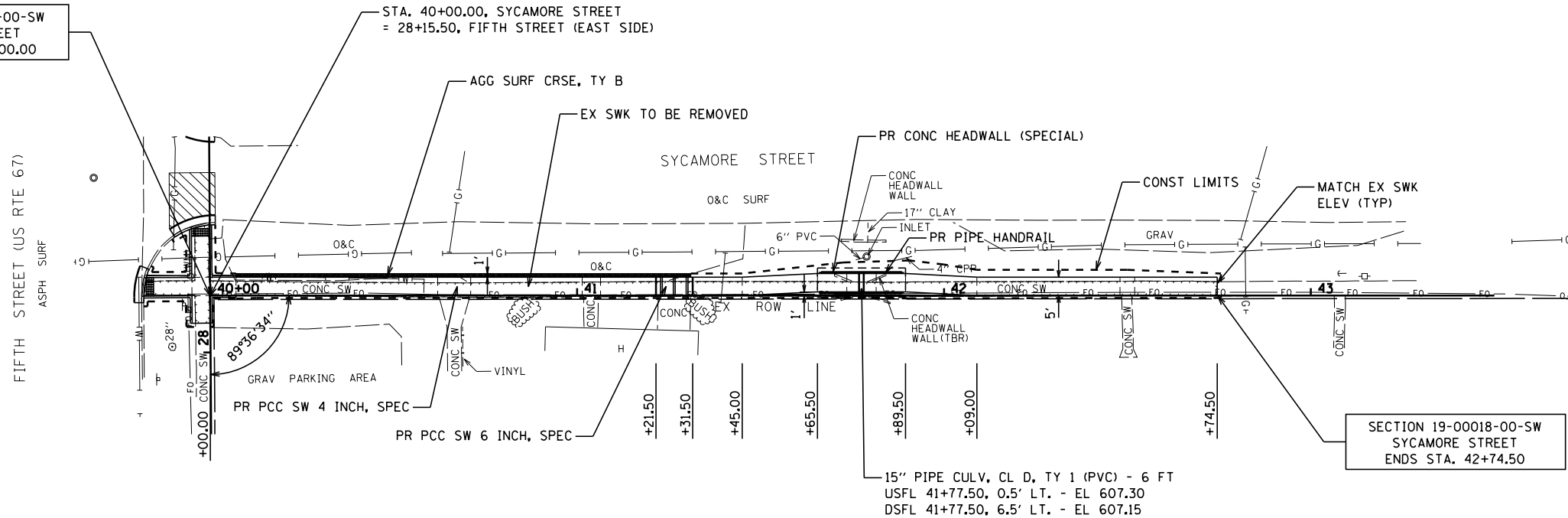
TOTALS THIS SHEET
 EARTH EXCAVATION - 36.1 CY
 SEEDING, CLASS 1 - 0.04 AC
 NITROGEN FERTILIZER NUTRIENT - 3.6 LB
 PHOSPHORUS FERTILIZER NUTRIENT - 3.6 LB
 POTASSIUM FERTILIZER NUTRIENT - 3.6 LB
 MULCH, METHOD 2 - 0.04 AC
 INLET AND PIPE PROTECTION - 2 EA
 AGGREGATE SURFACE COURSE, TYPE B - 4.7 TON
 CONCRETE HEADWALL (SPECIAL) - 1 EA
 PC CONCRETE SIDEWALK 4 INCH, SPEC - 1329.5 SF
 PC CONCRETE SIDEWALK 6 INCH, SPEC - 50 SF
 SIDEWALK REMOVAL - 1099.2 SF
 CONCRETE HEADWALL REMOVAL - 4 EA
 PIPE HANDRAIL - 46 FT
 PIPE CULV. CL D, TY 1 15" - 6 FT

BM-3283-9

PLAN	SURVEYED	DATE
	PLOTTED	
	NOTE BOOK	
	NO.	
	CHECKED	
	BY	
	FILE NAME	

PROFILE	SURVEYED	DATE
	PLOTTED	
	GRADES CHECKED	
	NO.	
	STRUCTURE	
	NOTATIONS	
	CHKD	

SECTION 19-00018-00-SW
 SYCAMORE STREET
 BEGINS STA. 40+00.00

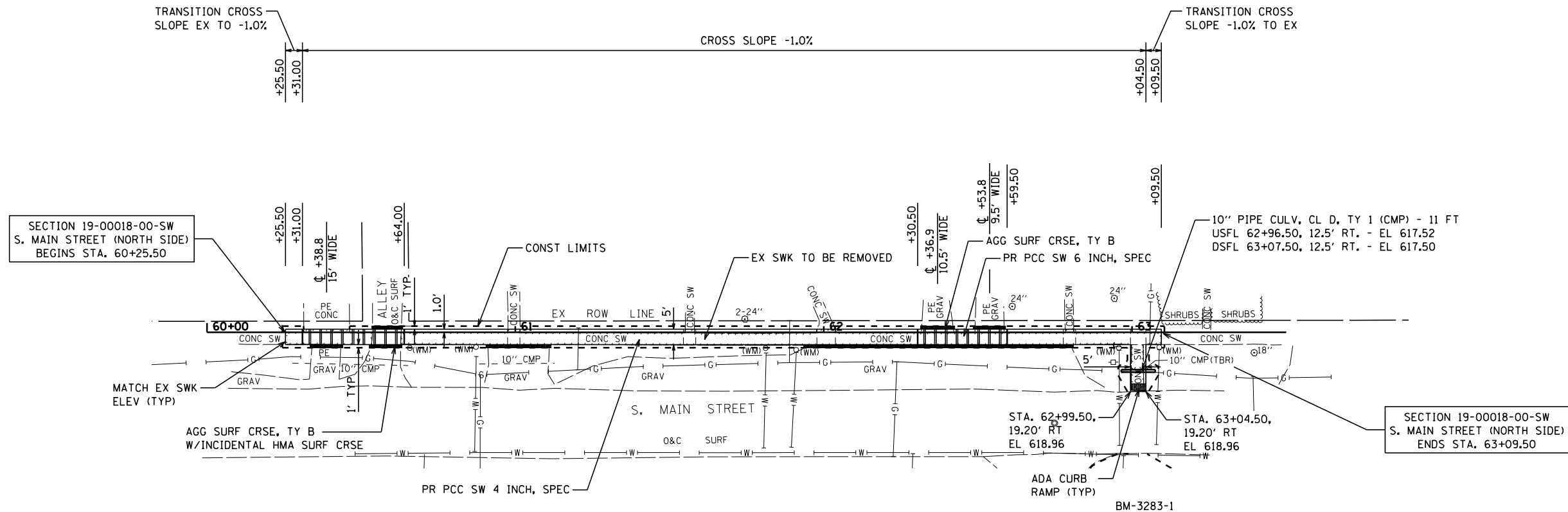


BM-3283-9 - YELLOW BM SPIKE IN POWER POLE
 W/LIGHT, S.E. CORNER OF 5TH ST. AND SYCAMORE ST.
 ELEV - 614.11

FILE NAME =	USER NAME = \$USER\$	DESIGNED - M. McEvers	REVISED -	CITY OF CARROLLTON SAFE ROUTES TO SCHOOLS PROGRAM	PLAN AND PROFILE SYCAMORE STREET	F.A. RTÉ.	SECTION	COUNTY	TOTAL SHEETS	SHEET NO.
P:\19e3283\Design\Design\CADD Sheets\97726-014-shr-plnprf-sycamore.dgn	DRAWN - M. McEvers	REVISED -	19-00018-00-SW			GREENE	22	14		
Default	CHECKED - W. Sleeman	REVISED -	CONTRACT NO. 97726							
	DATE - 10/2019	REVISED -	ILLINOIS FED. AID PROJECT							
					SCALE:	SHEET 1 OF 1 SHEETS		STA. 40+00.00 TO STA. 43+50.00		

DATE	
BY	
PLAN	SURVEYED
	PLOTTED
	GRADES CHECKED
	ALIGNMENT CHECKED
	STRUCTURE NOTED
	NOT AT THIS OFFICE
NOTE BOOK NO.	
CADD FILE NAME	

DATE	
BY	
PROFILE	SURVEYED
	PLOTTED
	GRADES CHECKED
	ALIGNMENT CHECKED
	STRUCTURE NOTED
	NOT AT THIS OFFICE
NOTE BOOK NO.	
CADD FILE NAME	

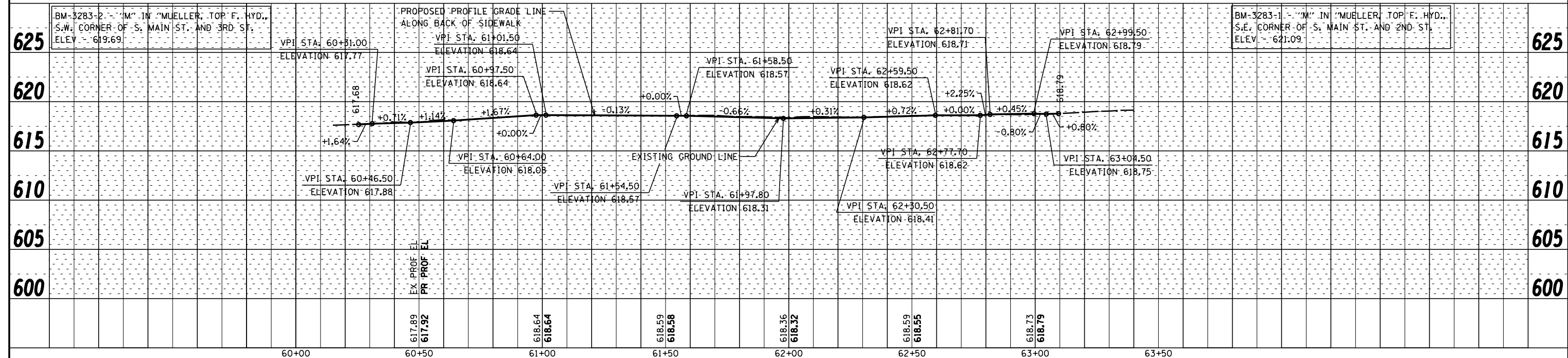
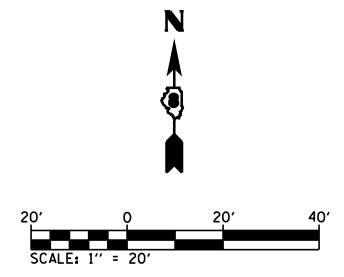


BM-3283-2

BM-3283-1

TOTALS THIS SHEET

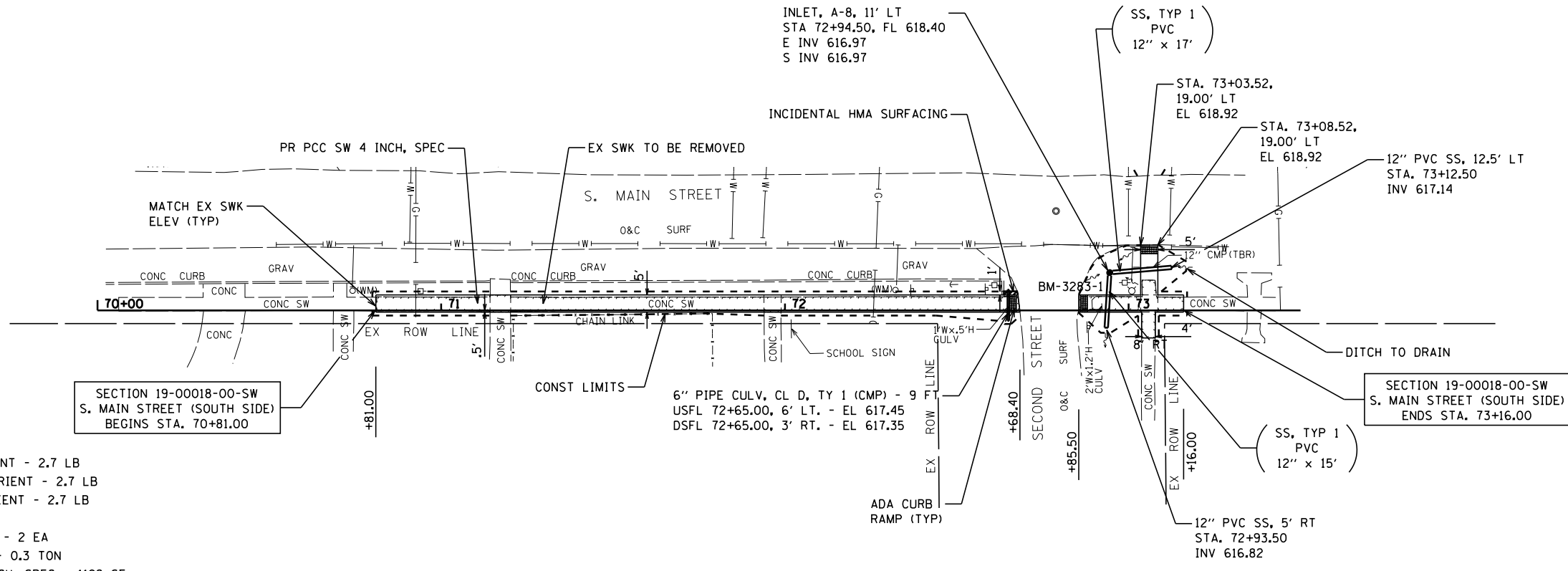
EARTH EXCAVATION - 14.8 CY	INCIDENTAL HMA SURFACING - 0.3 TON
SEEDING, CLASS 1 - 0.03 AC	PC CONCRETE SIDEWALK 4 INCH, SPEC - 1185.5 SF
NITROGEN FERTILIZER NUTRIENT - 2.7 LB	PC CONCRETE SIDEWALK 6 INCH, SPEC - 310 SF
PHOSPHORUS FERTILIZER NUTRIENT - 2.7 LB	DETECTABLE WARNINGS - 10 SF
POTASSIUM FERTILIZER NUTRIENT - 2.7 LB	DRIVEWAY PAVEMENT REMOVAL - 1.7 SY
MULCH, METHOD 2 - 0.03 AC	SIDEWALK REMOVAL - 1196.4 SF
INLET AND PIPE PROTECTION - 1 EA	PIPE CULVERT REMOVAL - 4 FT
AGGREGATE SURFACE COURSE, TYPE B - 6.9 TON	PIPE CULVERTS, CL D, TYPE 1 10" - 11 FT



FILE NAME =	USER NAME = \$USER\$	DESIGNED - M. McEvers	REVISED -	CITY OF CARROLLTON SAFE ROUTES TO SCHOOLS PROGRAM	PLAN AND PROFILE S. MAIN STREET (NORTH SIDE)	F.A. RTE.	SECTION	COUNTY	TOTAL SHEETS	SHEET NO.
P:\19e3283\Design\Design\CADD Sheets\97726-016-shit-plnprf-smain nsid.dgn	PLOT SCALE = 48.000' / in.	DRAWN - M. McEvers	REVISED -			19-00018-00-SW	GREENE	22	16	
Default	PLOT DATE = 2/4/2020	CHECKED - W. Sleeman	REVISED -			CONTRACT NO. 97726			ILLINOIS FED. AID PROJECT	
		DATE - 10/2019	REVISED -			SCALE:	SHEET 1 OF 1 SHEETS	STA. 60+00.00 TO STA. 63+09.50		

PLAN	SURVEYED	DATE
	PLOTTED	
	ALIGNED	
	CHECKED	
	FILED	
NO.	NO.	NO.

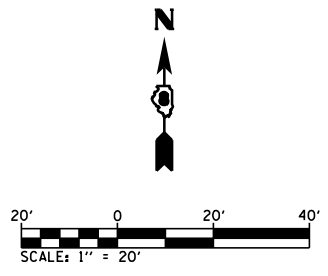
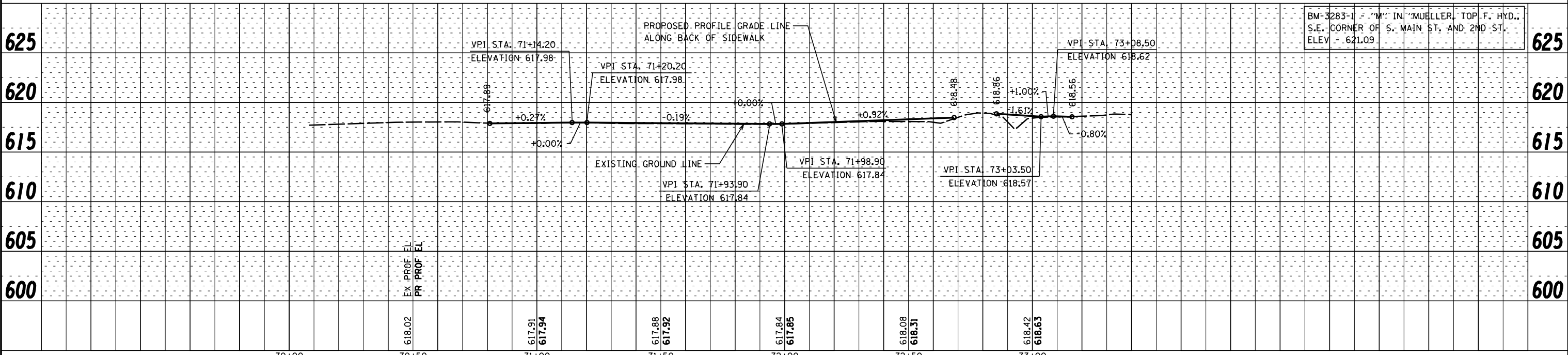
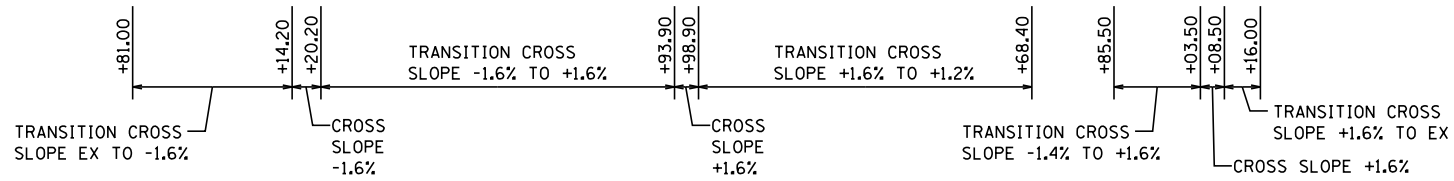
PROFILE	SURVEYED	DATE
	PLOTTED	
	GRADES CHECKED	
	STRUCTURE	
	NOTATIONS	
NO.	NO.	NO.



TOTALS THIS SHEET
 EARTH EXCAVATION - 9 CY
 SEEDING, CLASS 1 - 0.03 AC
 NITROGEN FERTILIZER NUTRIENT - 2.7 LB
 PHOSPHORUS FERTILIZER NUTRIENT - 2.7 LB
 POTASSIUM FERTILIZER NUTRIENT - 2.7 LB
 MULCH, METHOD 2 - 0.03 AC
 INLET AND PIPE PROTECTION - 2 EA
 INCIDENTAL HMA SURFACING - 0.3 TON
 PC CONCRETE SIDEWALK 4 INCH, SPEC - 1192 SF
 DETECTABLE WARNINGS - 30 SF
 SIDEWALK REMOVAL - 919.6 SF
 PIPE CULVERT REMOVAL - 9 FT
 PIPE CULVERTS, CL D, TYPE 1 6" - 9 FT
 STORM SEWERS, CL B, TYPE 1 12" - 32 FT
 INLETS, TYPE A, TYPE 8 GRATE - 1 EA

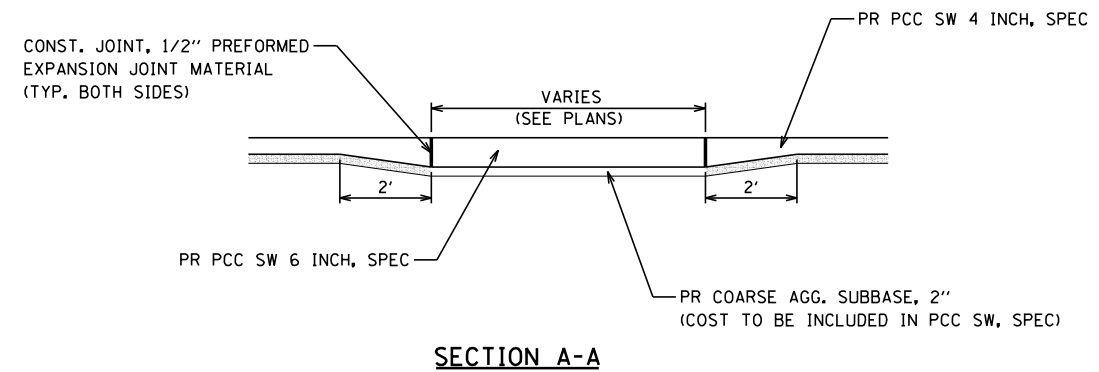
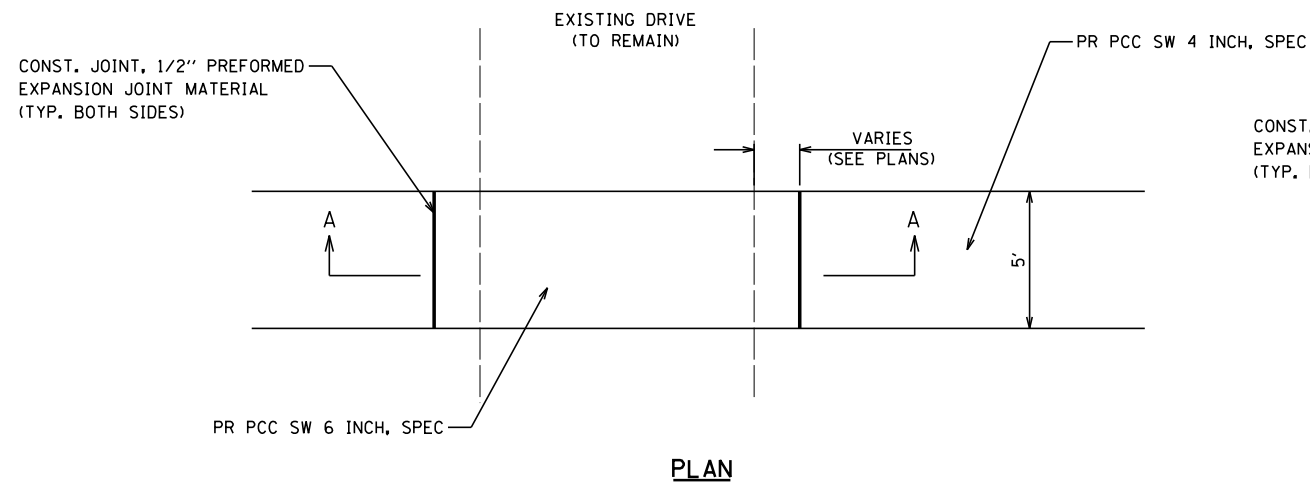
SECTION 19-00018-00-SW
 S. MAIN STREET (SOUTH SIDE)
 BEGINS STA. 70+81.00

SECTION 19-00018-00-SW
 S. MAIN STREET (SOUTH SIDE)
 ENDS STA. 73+16.00

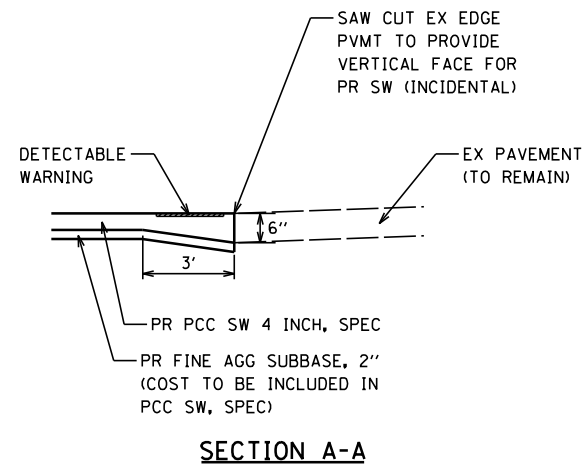
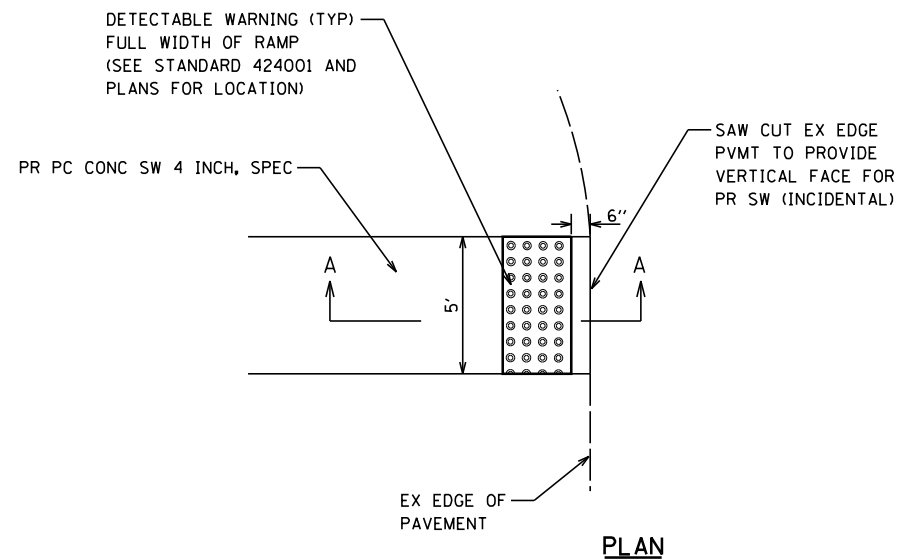


BM-3283-1 = 12" IN "MUELLER" TOP F. HYD.,
 S.E. CORNER OF S. MAIN ST. AND 2ND ST.
 ELEV = 621.09

FILE NAME =	USER NAME = \$USER\$	DESIGNED - M. McEvers	REVISED -	CITY OF CARROLLTON SAFE ROUTES TO SCHOOLS PROGRAM	PLAN AND PROFILE S. MAIN STREET (SOUTH SIDE)	F.A. RTE.	SECTION	COUNTY	TOTAL SHEETS	SHEET NO.
P:\19e3283\Design\Design\CADD Sheets\97726-017-shit-plnprf-smain ssdide.dgn	DRAWN - M. McEvers	REVISED -				19-00018-00-SW	GREENE	22	17	
Default	PLOT SCALE = 48.000' / in.	CHECKED - W. Sleeman	REVISED -			CONTRACT NO. 97726				
	PLOT DATE = 2/4/2020	DATE - 10/2019	REVISED -			ILLINOIS FED. AID PROJECT				

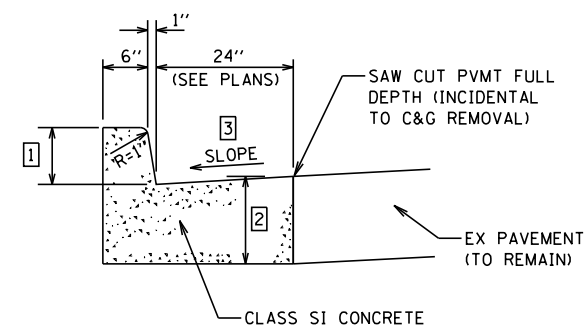


PROPOSED PCC SIDEWALK TRANSITION DETAIL ACROSS DRIVES
NOT TO SCALE



DETAIL SIDEWALK END ABUTTING EXISTING PAVEMENT
NOT TO SCALE

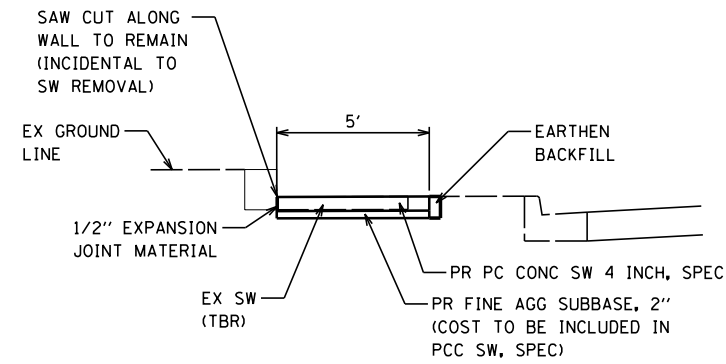
NOTE: COST OF ADDED THICKNESS FOR SWK AT EDGE OF EX PAVEMENT SHALL BE INCLUDED IN THE COST OF PORTLAND CEMENT CONCRETE SIDEWALK 4 INCH, SPEC



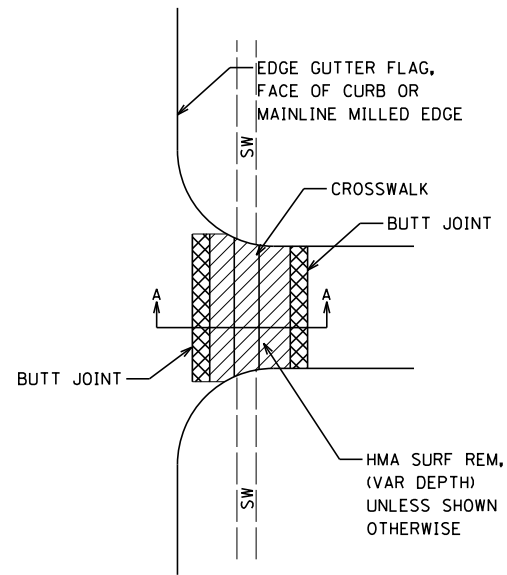
- NOTE:**
- 1 HEIGHT OF CURB WILL VARY. MAX. HEIGHT IS 6". CONTRACTOR SHALL MATCH HEIGHT AT ENDS OF CURBS WHEN TIEING PROPOSED INTO EX.
 - 2 THICKNESS VARIES. MATCH EX. PAVEMENT (TO REMAIN). MINIMUM THICKNESS OF 9".
 - 3 SLOPE PER HWY STD 606001 (UNLESS OTHERWISE SHOWN)

DETAIL COMBINATION CURB AND GUTTER ABUTTING EXISTING PAVEMENT
NOT TO SCALE

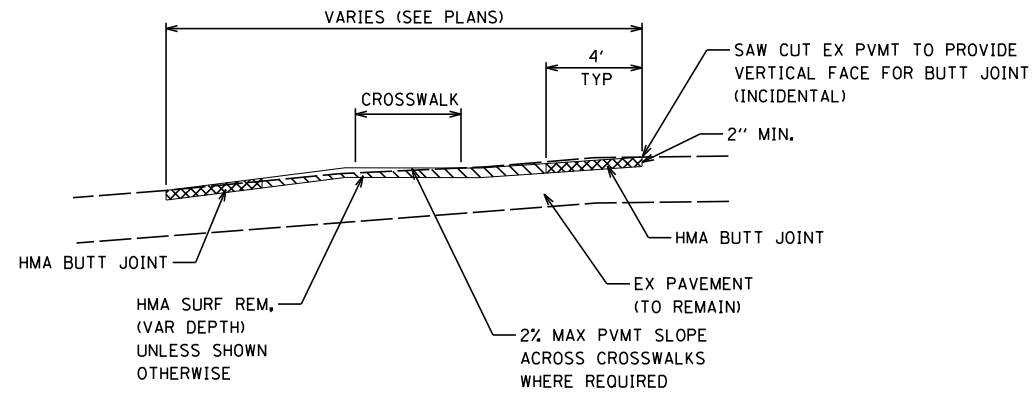
FILE NAME =	USER NAME = \$USER\$	DESIGNED -	REVISED -	CITY OF CARROLLTON SAFE ROUTES TO SCHOOLS PROGRAM	CONSTRUCTION DETAILS			F.A. RTE.	SECTION	COUNTY	TOTAL SHEETS	SHEET NO.
P:\19e3283\Design\Design\CADD Sheets\97	26-018-022-sht-const details.dgn	DRAWN - M. McEVERS	REVISED -					19-00018-00-SW	GREENE	22	18	
Default	PLOT SCALE = 40.0000' / in.	CHECKED - W. SLEEMAN	REVISED -		SCALE: SHEET 1 OF 5 SHEETS STA. TO STA.			CONTRACT NO. 97726				
	PLOT DATE = 1/23/2020	DATE - 10/2019	REVISED -		ILLINOIS FED. AID PROJECT							



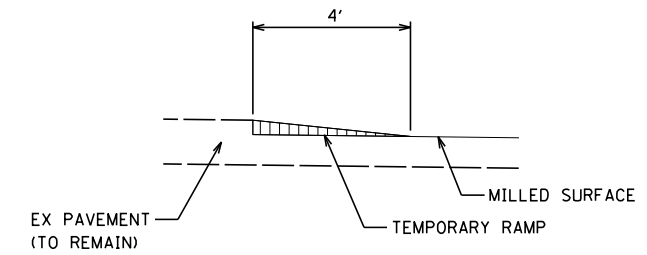
DETAIL SIDEWALK ADJACENT TO LANDSCAPE RETAINING WALL (TO REMAIN)
 STA. 22+09.00 TO STA. 22+15.00
 NOT TO SCALE



PLAN



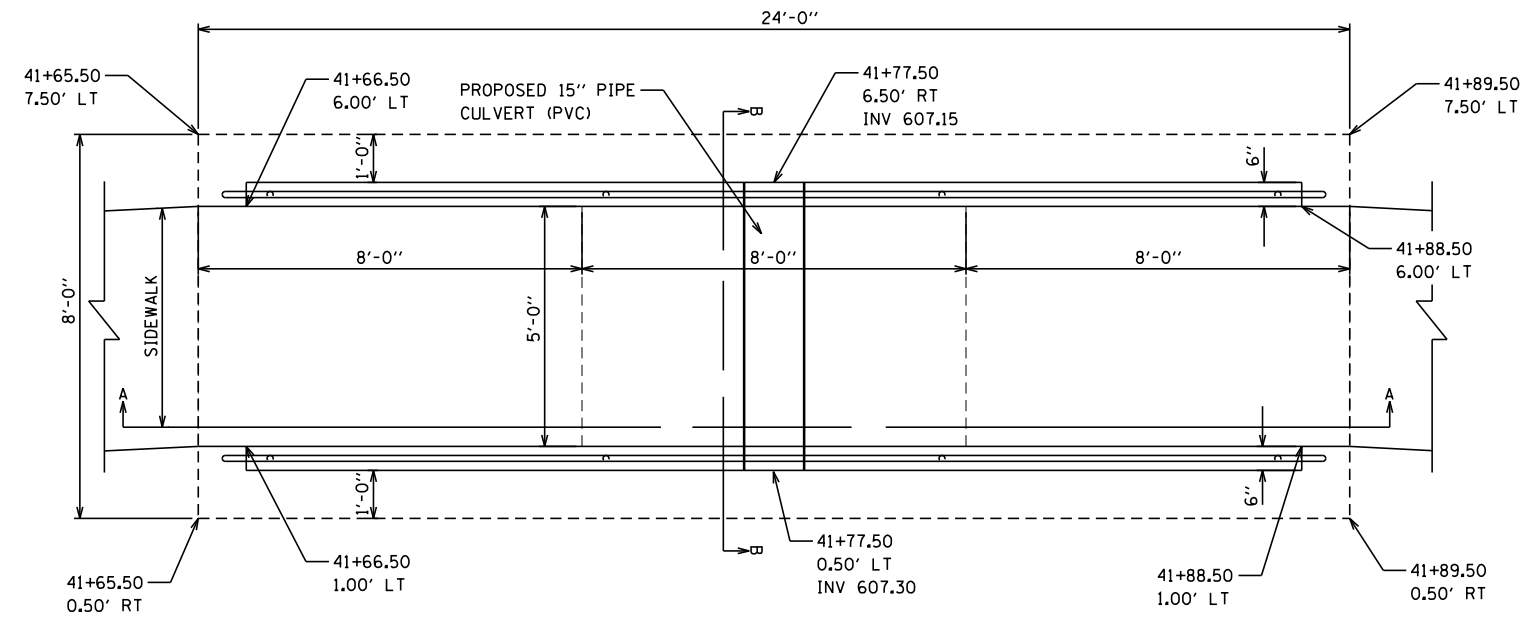
SECTION A-A



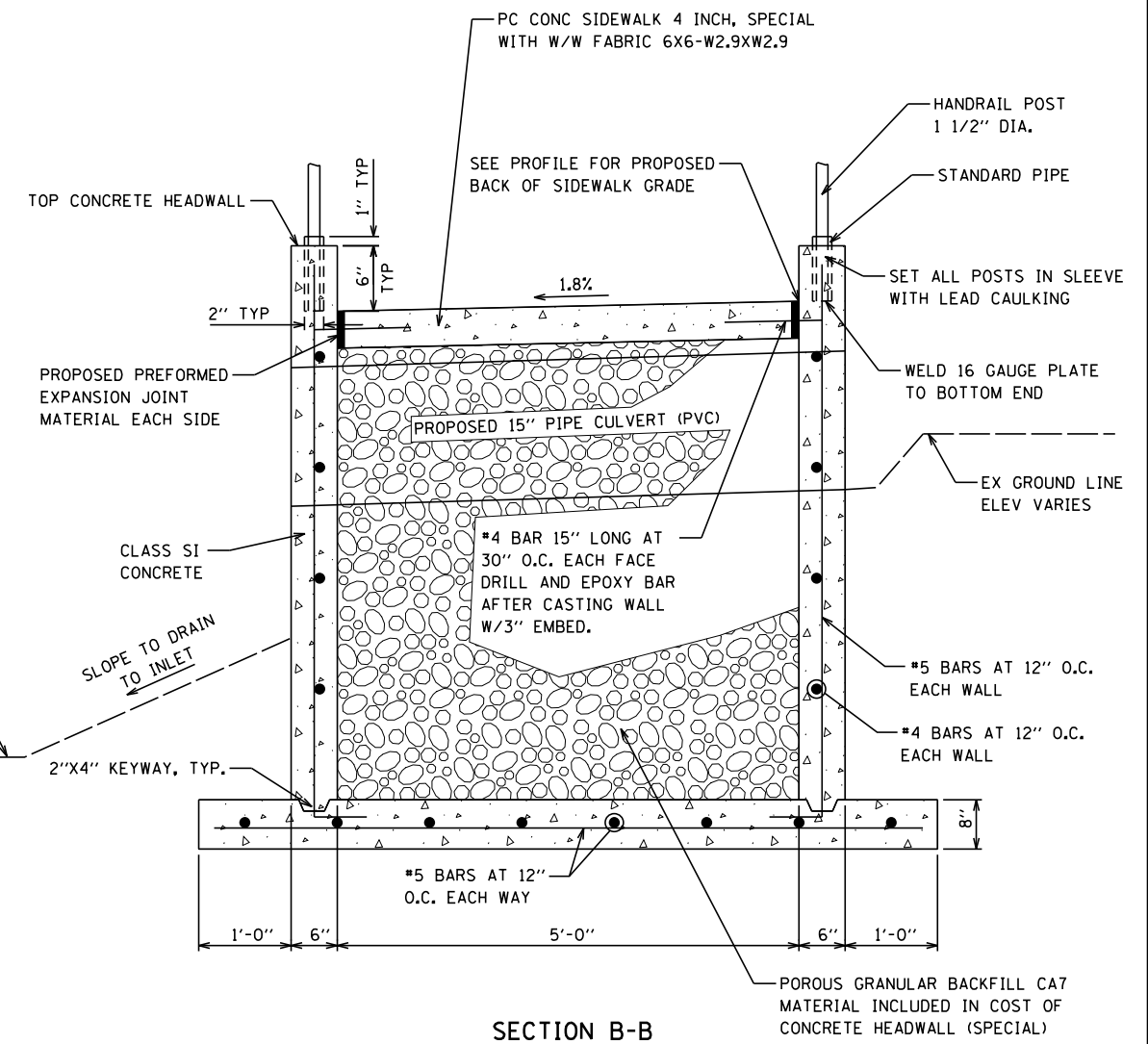
SIDE ROAD TEMPORARY RAMP DETAIL
 NOT TO SCALE

SIDE ROAD MILLING AND BUTT JOINT DETAIL
 NOT TO SCALE

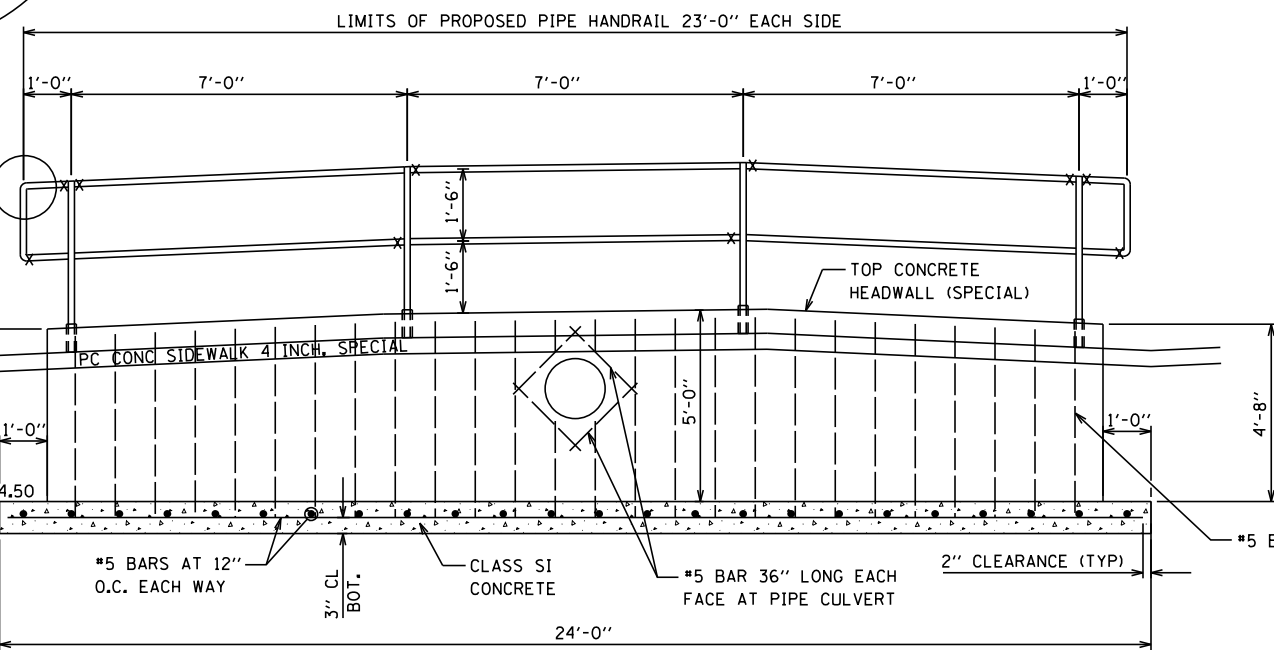
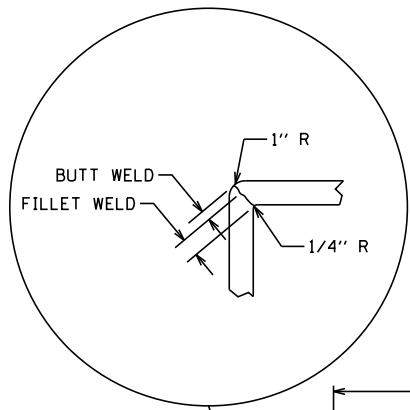
FILE NAME =	USER NAME = \$USER\$	DESIGNED -	REVISED -	CITY OF CARROLLTON SAFE ROUTES TO SCHOOLS PROGRAM	CONSTRUCTION DETAILS			F.A. RTÉ.	SECTION	COUNTY	TOTAL SHEETS	SHEET NO.
P:\19e3283\Design\Design\CADD Sheets\97	26-018-022-shr-const details.dgn	DRAWN - M. McEVERS	REVISED -					19-00018-00-SW	GREENE	22	19	
Default	PLOT SCALE = 40.0000' / in.	CHECKED - W. SLEEMAN	REVISED -		SCALE: SHEET 2 OF 5 SHEETS STA. TO STA.			CONTRACT NO. 97726				
	PLOT DATE = 1/23/2020	DATE - 10/2019	REVISED -		ILLINOIS FED. AID PROJECT							



PLAN



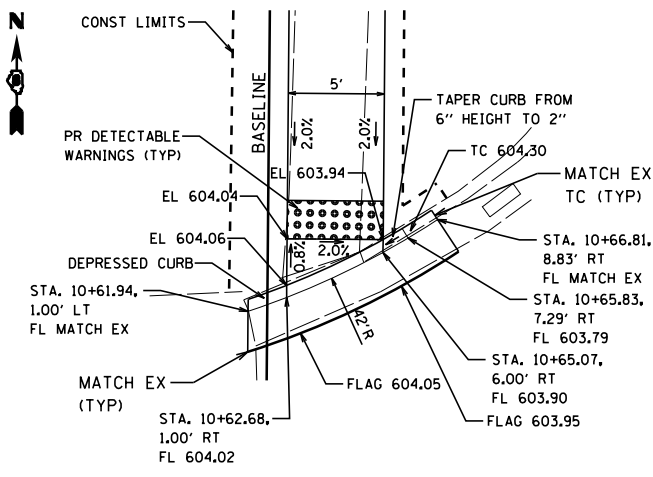
SECTION B-B



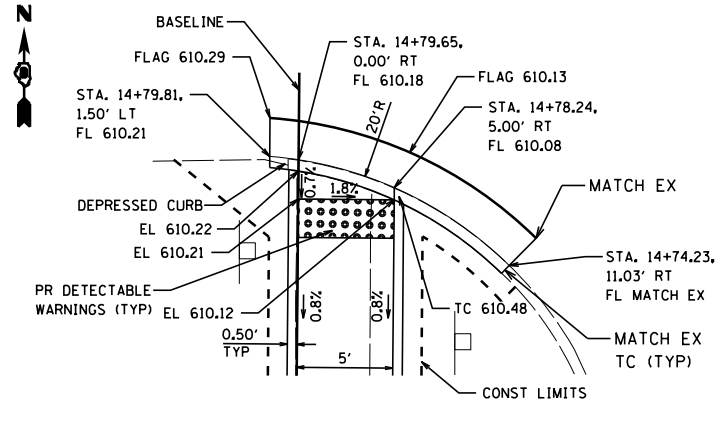
SECTION A-A

CONCRETE HEADWALL (SPECIAL) DETAILS
 STA. 41+65.50 TO STA. 41+89.50
 NOT TO SCALE

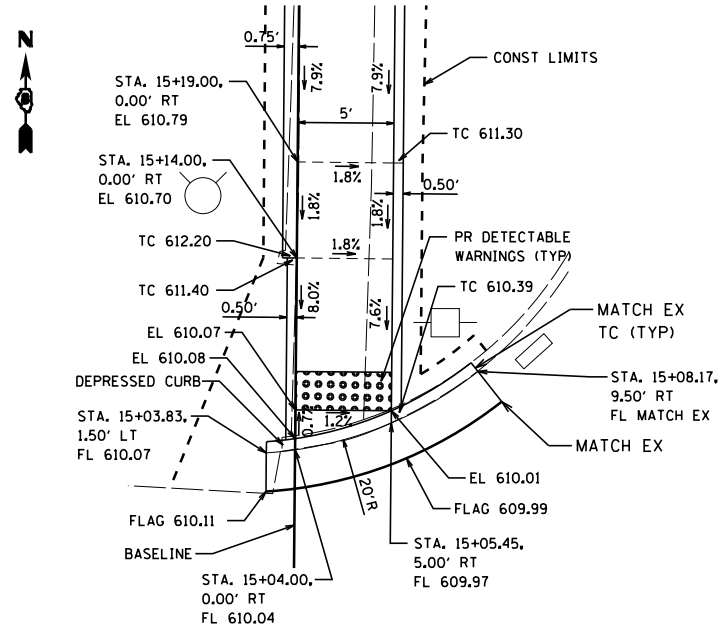
FILE NAME =	USER NAME = \$USER\$	DESIGNED -	REVISED -	CITY OF CARROLLTON SAFE ROUTES TO SCHOOLS PROGRAM	CONSTRUCTION DETAILS			F.A. RTE.	SECTION	COUNTY	TOTAL SHEETS	SHEET NO.
P:\19e3283\Design\CADD Sheets\97	26-018-022-sht-const details.dgn	DRAWN - M. McEVERS	REVISED -					19-00018-00-SW	GREENE	22	20	
Default	PLOT SCALE = 48.0000' / in.	CHECKED - W. SLEEMAN	REVISED -		SCALE: SHEET 3 OF 5 SHEETS STA. TO STA.			CONTRACT NO. 97726		ILLINOIS FED. AID PROJECT		
	PLOT DATE = 1/23/2020	DATE - 10/2019	REVISED -									



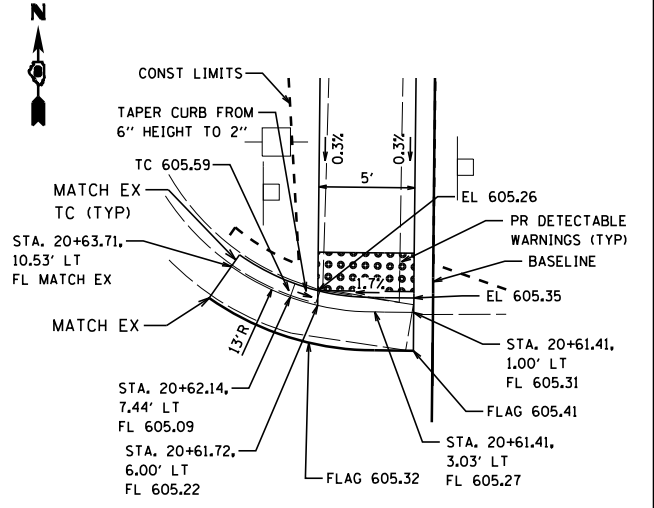
**NORTHWEST QUADRANT FIFTH STREET
(US RTE 67) AND SCHOOL STREET**
SCALE: 1" = 5'



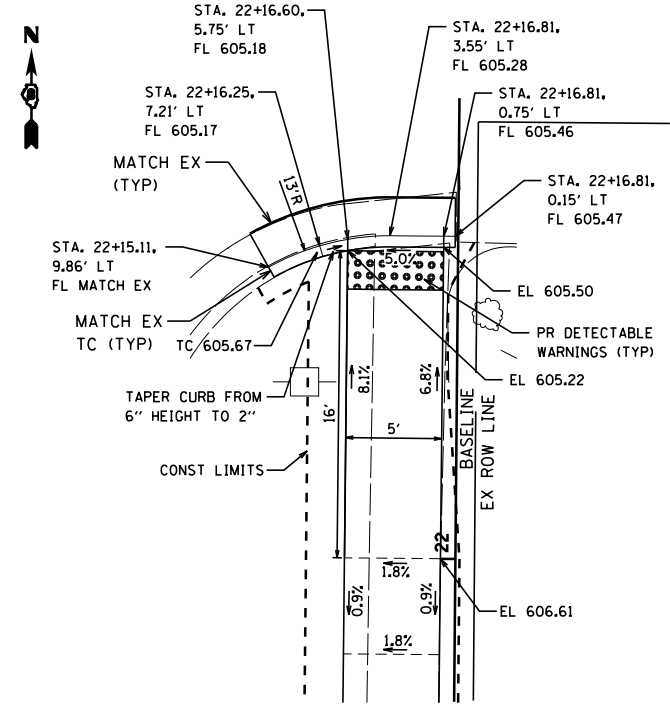
**SOUTHWEST QUADRANT FIFTH STREET
(US RTE 67) AND SYCAMORE STREET**
SCALE: 1" = 5'



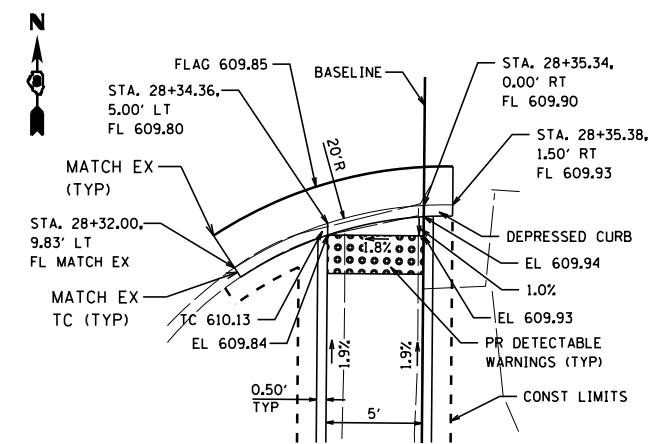
**NORTHWEST QUADRANT FIFTH STREET
(US RTE 67) AND SYCAMORE STREET**
SCALE: 1" = 5'



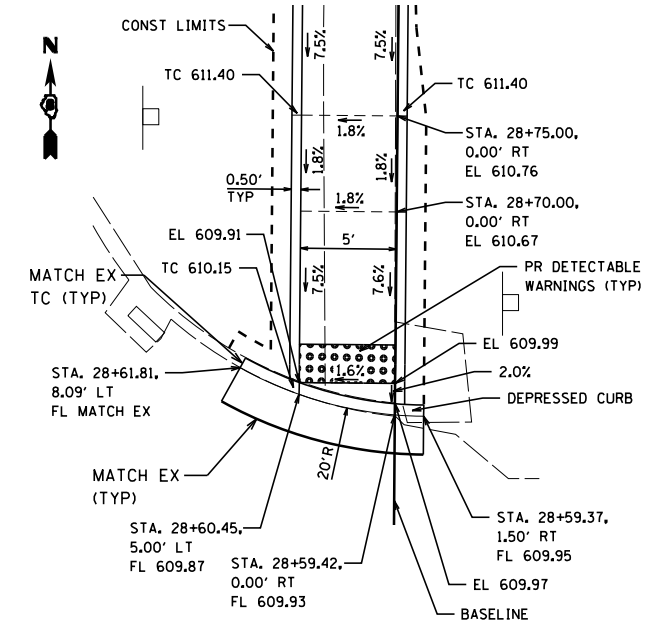
**NORTHEAST QUADRANT FIFTH STREET
(US RTE 67) AND PINE STREET**
SCALE: 1" = 5'



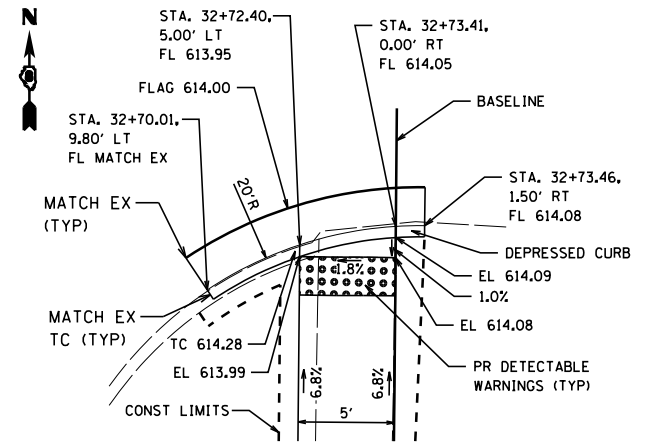
**SOUTHEAST QUADRANT FIFTH STREET (US RTE 67)
AND ALLEY NORTH OF PINE STREET**
SCALE: 1" = 5'



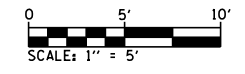
**SOUTHEAST QUADRANT FIFTH STREET
(US RTE 67) AND SYCAMORE STREET**
SCALE: 1" = 5'



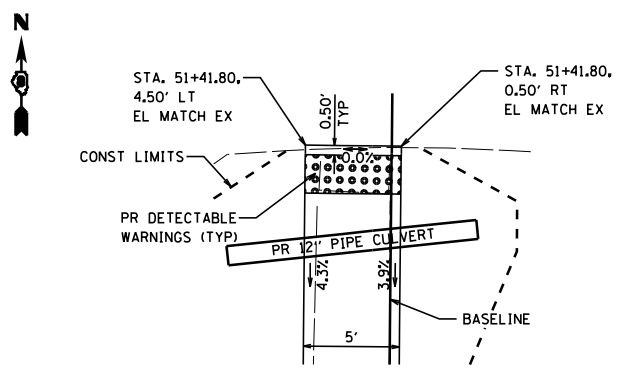
**NORTHEAST QUADRANT FIFTH STREET
(US RTE 67) AND SYCAMORE STREET**
SCALE: 1" = 5'



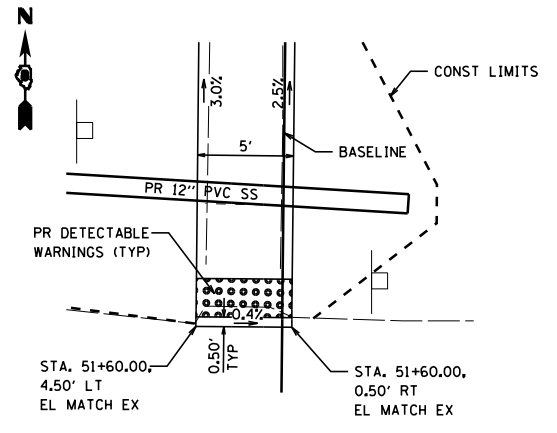
**SOUTHEAST QUADRANT FIFTH STREET
(US RTE 67) AND MAPLE STREET**
SCALE: 1" = 5'



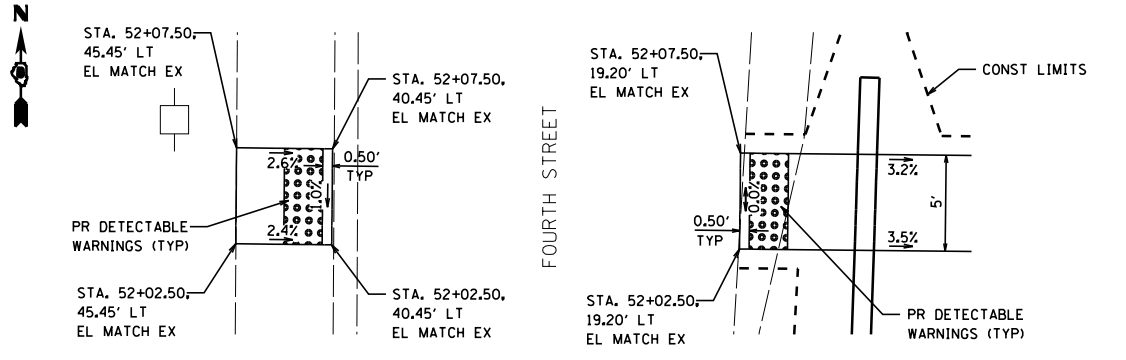
FILE NAME = P:\19e3283\Design\Design\CADD Sheets\97	USER NAME = \$USER\$	DESIGNED -	REVISED -	CITY OF CARROLLTON SAFE ROUTES TO SCHOOLS PROGRAM	CONSTRUCTION DETAILS	F.A. RTE.	SECTION	COUNTY	TOTAL SHEETS	SHEET NO.	
Default	26-018-022-sht-const details.dgn	DRAWN - M. McEVERS	REVISED -			SCALE:	SHEET 4 OF 5 SHEETS	STA.	TO STA.	ILLINOIS FED. AID PROJECT	
	PLOT SCALE = 40.0000' / in.	CHECKED - W. SLEEMAN	REVISED -								
	PLOT DATE = 2/5/2020	DATE - 10/2019	REVISED -								



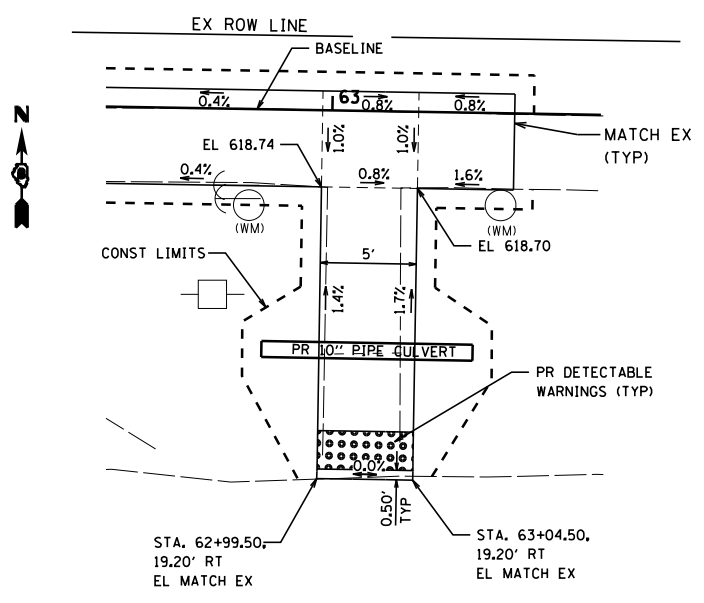
**SOUTHEAST QUADRANT FOURTH STREET
AND HIGHLAND STREET**
SCALE: 1" = 5'



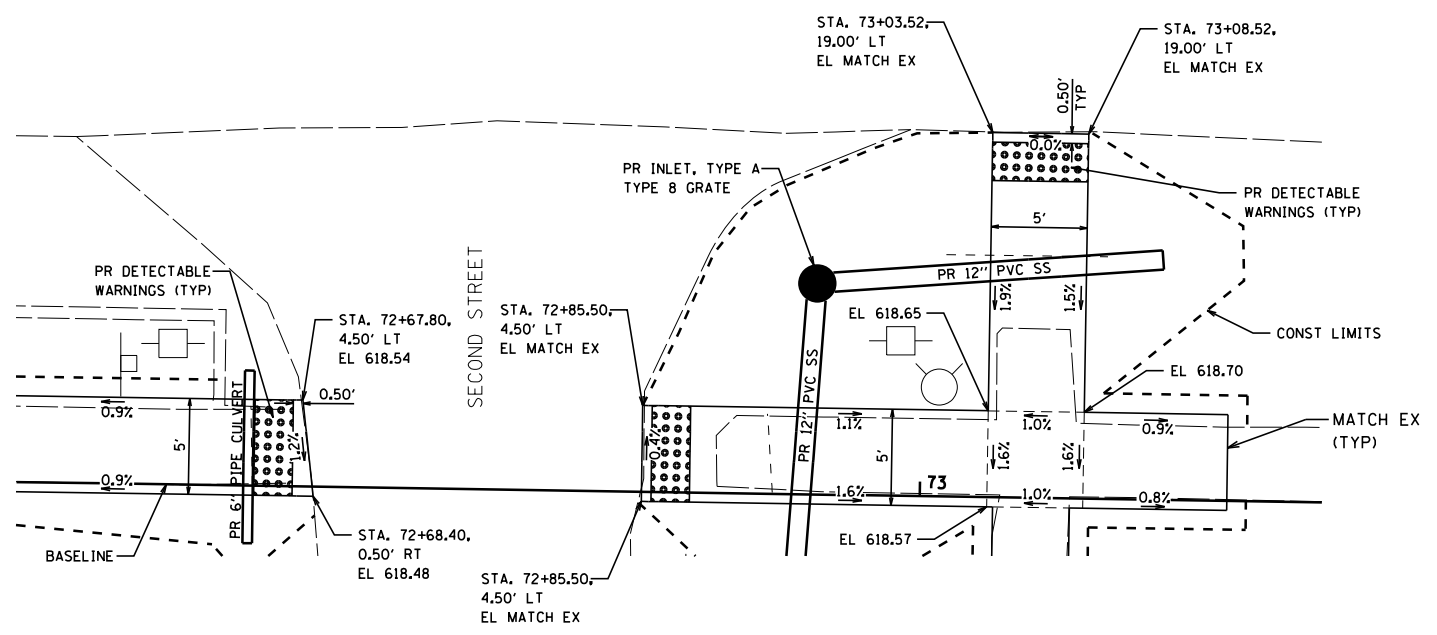
**NORTHEAST QUADRANT FOURTH STREET
AND HIGHLAND STREET**
SCALE: 1" = 5'



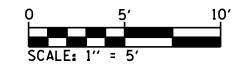
**SCHOOL CROSSING - FOURTH STREET
NORTH OF HIGHLAND STREET**
SCALE: 1" = 5'



**NORTHEAST QUADRANT S. MAIN STREET
AND SECOND STREET**
SCALE: 1" = 5'



**SOUTHEAST/SOUTHWEST QUADRANT
S. MAIN STREET AND SECOND STREET**
SCALE: 1" = 5'



FILE NAME =	USER NAME = \$USER\$	DESIGNED -	REVISED -	CITY OF CARROLLTON SAFE ROUTES TO SCHOOLS PROGRAM	CONSTRUCTION DETAILS			F.A. RTE.	SECTION	COUNTY	TOTAL SHEETS	SHEET NO.
P:\19e3283\Design\Design\CADD Sheets\97	26-018-022-sht-const details.dgn	DRAWN - M. McEVERS	REVISED -					19-0018-00-SW	GREENE	22	22	
Default	PLOT SCALE = 40.0000' / in.	CHECKED - W. SLEEMAN	REVISED -		SCALE: SHEET 5 OF 5 SHEETS STA. TO STA.			CONTRACT NO. 97726		ILLINOIS FED. AID PROJECT		
	PLOT DATE = 1/23/2020	DATE - 10/2019	REVISED -									