

STATE OF ILLINOIS
DEPARTMENT OF TRANSPORTATION

F.A.I. RTE.	SECTION	COUNTY	TOTAL SHEETS	SHEET NO.
57	(0404-1023K) C, BR 24	COOK / WILL	14	1
		ILLINOIS	CONTRACT NO. 62X31	

D-91-016-25

FOR INDEX OF SHEETS, SEE SHEET NO. 2
FOR LIST OF HIGHWAY STANDARDS, SEE SHEET NO. 2

IMPROVEMENT IS LOCATED IN THE VILLAGE OF MONEE AND THE VILLAGE OF MATTESON

TRAFFIC DATA
2023 ADT = 79,300 (15% TRUCKS)
DESIGN CLASSIFICATION = INTERSTATE
POSTED SPEED LIMIT = 55

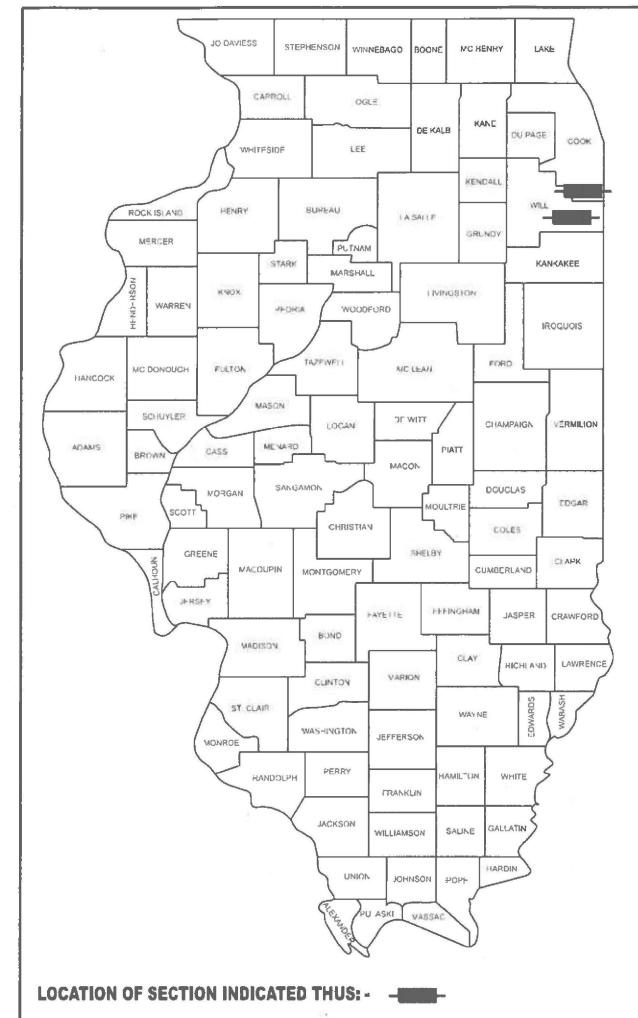


Expires 11-30-2026

Amber Seiber

PROPOSED
HIGHWAY PLANS

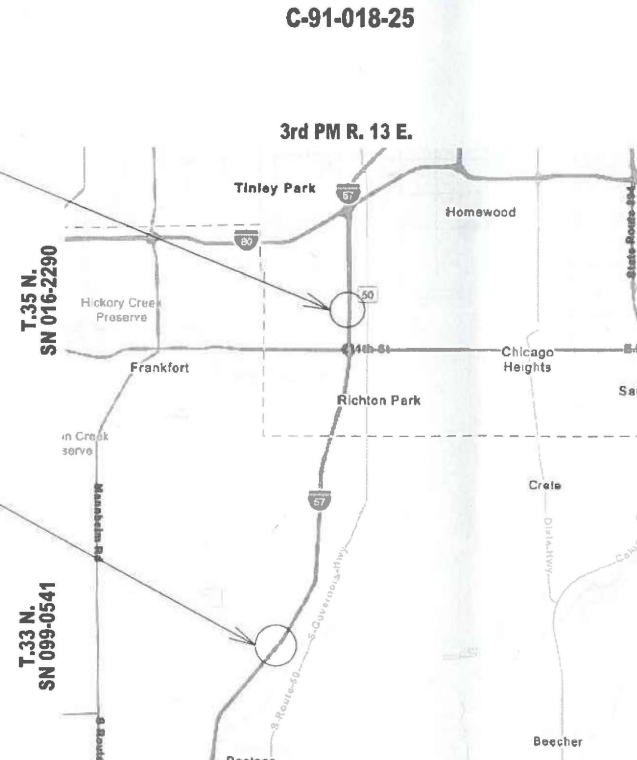
F.A.I. ROUTE 57: I-57 OVER BUTTERFIELD CREEK AND I-57 OVER CULVERT 0.38 MILES NORTH OF HARLEM AVE SECTION (0404-1023K)C, BR-24 CULVERT REPAIR, WINGWALL REPAIR COOK & WILL COUNTIES



LOCATION OF SECTION INDICATED THUS: - [shaded box] -

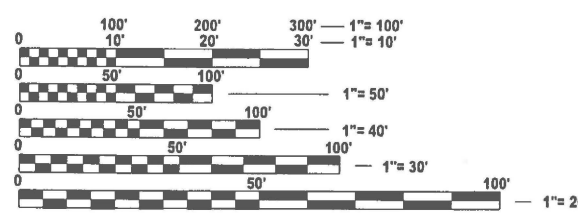
PROJECT LOCATION
SN 016-2290

PROJECT LOCATION
SN 099-0541



LOCATION MAP
NOT TO SCALE

GROSS LENGTH = 650.00 FT. = 0.12 MILE
NET LENGTH = 650.00 FT. = 0.12 MILE



FULL SIZE PLANS HAVE BEEN PREPARED USING STANDARD ENGINEERING SCALES. REDUCED SIZED PLANS WILL NOT CONFORM TO STANDARD SCALES. IN MAKING MEASUREMENTS ON REDUCED PLANS, THE ABOVE SCALES MAY BE USED.

J.U.L.I.E.
JOINT UTILITY LOCATION INFORMATION FOR EXCAVATION
1-800-892-0123
OR 811

PROJECT ENGINEER: RODRIGO LEDEZMA, P.E. (847)705-4580
PROJECT MANAGER: J. ALAIN MIDY, P.E. (847)221-3056

CONTRACT NO. 62X31



STATE OF ILLINOIS
DEPARTMENT OF TRANSPORTATION

SUBMITTED Dec 3rd 2025
[Signature]
REGIONAL ENGINEER

March 20, 2026
[Signature]
ENGINEER OF DESIGN AND ENVIRONMENT

March 20, 2026
[Signature]
DIRECTOR OF HIGHWAYS PROJECT IMPLEMENTATION

PRINTED BY THE AUTHORITY
OF THE STATE OF ILLINOIS

GENERAL NOTES

- IT SHALL BE THE CONTRACTOR'S RESPONSIBILITY TO VERIFY ALL DIMENSIONS AND CONDITIONS EXISTING IN THE FIELD PRIOR TO CONSTRUCTION AND ORDERING OF MATERIALS.
- BEFORE STARTING ANY EXCAVATION, THE CONTRACTOR SHALL CALL "J.U.L.I.E" AT (800) 892-0123 OR 811 FOR FIELD LOCATIONS OF BURIED ELECTRIC, TELEPHONE, AND GAS UTILITIES. 48 HOUR NOTIFICATION IS REQUIRED.
- THE CONTRACTOR SHALL COORDINATE CONSTRUCTION ACTIVITIES WITH UTILITY COMPANIES AND THE VILLAGE OF MATTESON AND THE VILLAGE OF MONEE. THE CONTRACTOR SHALL NOTIFY THE VILLAGE PRIOR TO THE START OF CONSTRUCTION.
- THE CONTRACTOR WILL NOT BE ALLOWED TO SET UP A YARD OR FIELD OFFICE ON STATE PROPERTY WITHOUT WRITTEN PERMISSION FROM THE DEPARTMENT.
- THIS PROJECT REQUIRES A US ARMY CORPS OF ENGINEERS (USACE) 404 PERMIT THAT WILL BE SECURED BY THE DEPARTMENT. AS A CONDITION OF THIS PERMIT, THE CONTRACTOR WILL NEED TO SUBMIT AN IN-STREAM WORK PLAN TO THE DEPARTMENT FOR APPROVAL. GUIDELINES ON ACCEPTABLE IN-STREAM WORK TECHNIQUES CAN BE FOUND ON THE USACE WEBSITE. THE USACE DEFINES AND DETERMINES IN-STREAM WORK. THE COST OF ALL MATERIALS AND LABOR NECESSARY TO COMPLY WITH THE ABOVE PROVISIONS TO PREPARE AND IMPLEMENT AN IN-STREAM WORK PLAN WILL NOT BE PAID FOR SEPARATELY, BUT SHALL BE CONSIDERED AS INCLUDED IN THE UNIT BID PRICES OF THE CONTRACT AND NO ADDITIONAL COMPENSATION WILL BE ALLOWED.
- DURING CONSTRUCTION OPERATIONS, LOOSE MATERIAL DEPOSITS THAT OBSTRUCT THE FLOW OF WATER IN DRAINING THE AREA SHALL BE REMOVED BEFORE THE END OF EACH WORK DAY. THIS WORK WILL NOT BE PAID FOR SEPARATELY BUT SHALL BE CONSIDERED INCIDENTAL TO THE CONTRACT.
- THE CONTRACTOR SHALL CONTACT KALPANA KANNAN-HOSADURGA, THE DISTRICT ONE TRAFFIC CONTROL SUPERVISOR, AT KALPANA.KANNAN-HOSADURGA@ILLINOIS.GOV A MINIMUM OF 72 HOURS IN ADVANCE OF BEGINNING WORK.
- DO NOT SCALE PLANS FOR CONSTRUCTION DIMENSIONS.
- THE CONTRACTOR SHALL REQUEST AND GAIN APPROVAL FROM THE ILLINOIS DEPARTMENT OF TRANSPORTATION'S EXPRESSWAY TRAFFIC OPERATIONS ENGINEER AT WWW.IDOTLCS.COM TWENTY-FOUR (24) HOURS IN ADVANCE OF ALL DAILY LANE, RAMP AND SHOULDER CLOSURES AND SEVEN (7) DAYS IN ADVANCE OF ALL PERMANENT AND WEEKEND CLOSURES ON ALL FREEWAYS AND/OR EXPRESSWAYS IN DISTRICT ONE. THIS ADVANCE NOTIFICATION IS CALCULATED BASED ON THE WORKWEEK OF MONDAY THROUGH FRIDAY AND SHALL NOT INCLUDE WEEKENDS OR HOLIDAYS.
- THE CONTRACTOR SHALL CONTACT THE IDOT EXPRESSWAY TRAFFIC CONTROL SUPERVISOR, DISTRICT ONE, CARLOS MUNOZ AT CARLOS.MUNOZ@ILLINOIS.GOV A MINIMUM OF 72 HOURS IN ADVANCE OF BEGINNING WORK.

INDEX OF SHEETS

1	COVER SHEET
2	INDEX OF SHEETS, HIGHWAY STANDARDS AND GENERAL NOTES
3	SUMMARY OF QUANTITIES
4	TYPICAL SECTIONS
5	EROSION CONTROL PLAN - S.N. 016-2290
6	EROSION CONTROL PLAN - S.N. 099-0541
7-8	CULVERT REPAIRS - S.N. 016-2290
9-12	WINGWALL REPAIRS - S.N. 099-0541
13-14	DISTRICT STANDARDS

HIGHWAY STANDARDS

000001-09	STANDARD SYMBOLS, ABBREVIATIONS, AND PATTERNS
001001-02	AREAS OF REINFORCEMENT BARS
280001-07	TEMPORARY EROSION CONTROL SYSTEMS
701001-02	OFF-ROAD OPERATIONS, 2L, 2W, MORE THAN 15' AWAY
701006-05	OFF-ROAD OPERATIONS, 2L, 2W, 15' TO 24' FROM PAVEMENT EDGE
701011-04	OFF-ROAD MOVING OPERATIONS, 2L, 2W, DAY ONLY
701106-02	OFF-ROAD OPERATIONS, MULTILANE, MORE THAN 15' AWAY
701400-12	APPROACH TO LANE CLOSURE, FREEWAY/EXPRESSWAY
701401-13	LANE CLOSURE FREEWAY/EXPRESSWAY
701411-09	MULTI-LANE, TRAFFIC CONTROL AT ENTRANCE OF EXIT RAMP
701428-01	TRAFFIC CONTROL SETUP & REMOVAL FREEWAY/EXPRESSWAY
701901-11	TRAFFIC CONTROL DEVICES

IDOT DISTRICT 1 STANDARD DRAWINGS

STANDARD NO.	DESCRIPTION
TC - 09	SINGLE LANE WEAVE AND MULTI-LANE WEAVE
TC - 17	TRAFFIC CONTROL FOR FREEWAY SHOULDER CLOSURES AND PARTIAL RAMP CLOSURES

MODEL: Default
FILE NAME: C:\Users\aseiber\OneDrive\Engineers\ic.com\Orion Admin - 2025011 - IDOT Various Phase II (0-91-046-25)WOC #2 - 62X31\CADD\Med\62X31-Border.dgn



USER NAME = aseiber	DESIGNED -	REVISED -
	DRAWN -	REVISED -
	CHECKED -	REVISED -
PLOT DATE = 12/12/2025	DATE -	REVISED -

**STATE OF ILLINOIS
DEPARTMENT OF TRANSPORTATION**

**INDEX OF SHEETS, HIGHWAY STANDARDS AND GENERAL NOTES
F.A.I. ROUTE 57 OVER BUTTERFIELD CREEK AND OVER CULVERT**

SCALE: SHEET OF SHEETS STA. TO STA.

F.A.I. RTE.	SECTION	COUNTY	TOTAL SHEETS	SHEET NO.
57	(0404-1023K) C, BR 24	COOK / WILL	14	2
CONTRACT NO. 62X31				
ILLINOIS FED. AID PROJECT				

MODEL: Default
 FILE NAME: C:\Users\aseiber\OneDrive\Engineering\62X31 - IDOT Various Phase II (D-91-046-25)\WC #2 - 62X31\CADD\Med\62X31-Border.dgn

SP	CODE NO.	ITEM	UNIT	TOTAL QUANTITY	CONSTRUCTION CODE	
					CONTRACT MAINTENANCE	
					100% STATE	
					SN 016-2290 0004 URBAN	SN 099-0541 0004 URBAN
	28000400	PERIMETER EROSION BARRIER	FOOT	647	385	262
	28100707	STONE DUMPED RIPRAP, CLASS A4	SQ YD	39	0	39
	50102400	CONCRETE REMOVAL	CU YD	2.9	0	2.9
	50200100	STRUCTURE EXCAVATION	CU YD	15	0	15
	50300225	CONCRETE STRUCTURES	CU YD	3.5	0	3.5
	50800205	REINFORCEMENT BARS, EPOXY COATED	POUND	730	0	730
	53212754	STRUCTURAL REPAIR OF CONCRETE (DEPTH EQUAL TO OR LESS THAN 5 INCHES)	SQ FT	130	128	2
	58600101	GRANULAR BACKFILL FOR STRUCTURES	CU YD	15	0	15
	58700300	CONCRETE SEALER	SQ FT	135	0	135
	59000200	EPOXY CRACK INJECTION	FOOT	15	0	15
	63300575	REMOVE AND REERECT RAIL ELEMENT OF EXISTING GUARDRAIL	FOOT	200	100	100
	67100100	MOBILIZATION	L SUM	1	0.5	0.5
	X2010514	SELECTIVE CLEARING	ACRE	0.50	0.25	0.25
	X2502024	SEEDING, CLASS 4B (MODIFIED)	ACRE	0.50	0.25	0.25
	X2511630	EROSION CONTROL BLANKET (SPECIAL)	SQ YD	1122	633	489
	X5021512	COFFERDAM (TYPE 1) (IN-STREAM/WETLAND WORK)	EACH	2	1	1
	X7011015	TRAFFIC CONTROL AND PROTECTION (EXPRESS WA YS)	LSUM	1	0.5	0.5
*	66900200	NON SPECIAL WASTE DISPOSAL	CU YD	50	25	25
*	66900530	SOIL DISPOSAL ANAL YSIS	EACH	2	1	1
*	66901001	REGULATED SUBSTANCES PRE - CONSTRUCTION PLAN	L SUM	1	0.5	0.5
*	66901003	REGULATED SUBSTANCES FINAL CONSTRUCTION REPORT	L SUM	1	0.5	0.5
*	66901006	REGULATED SUBSTANCES MONITORING	CAL DA	20	10	10

* SPECIALTY ITEM



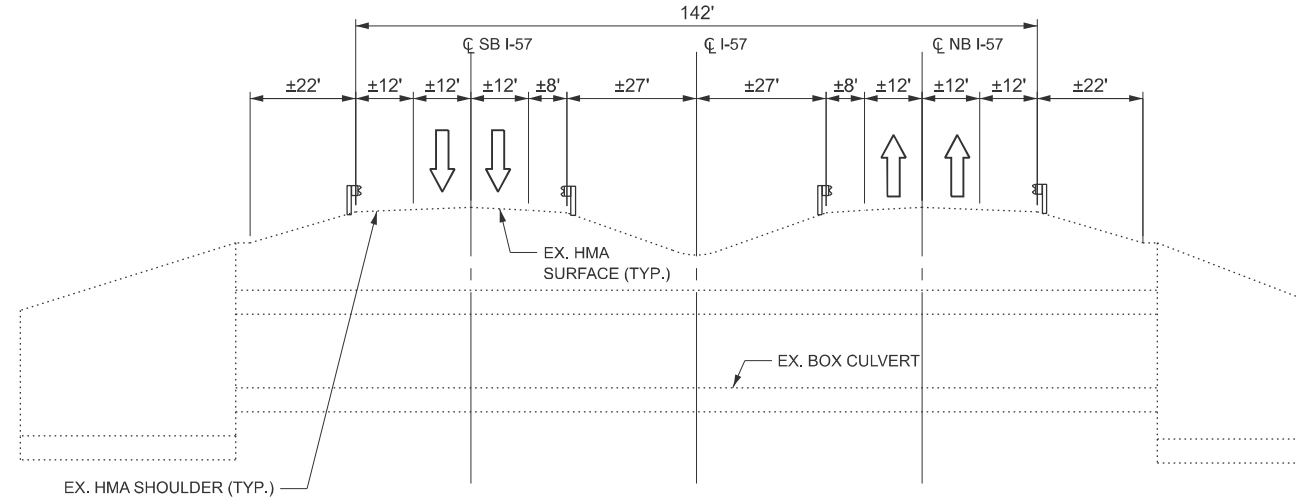
USER NAME = aseiber	DESIGNED -	REVISED -
	DRAWN -	REVISED -
	CHECKED -	REVISED -
PLOT DATE = 12/12/2025	DATE -	REVISED -

STATE OF ILLINOIS
 DEPARTMENT OF TRANSPORTATION

SUMMARY OF QUANTITIES
 F.A.I. ROUTE 57 OVER BUTTERFIELD CREEK AND OVER CULVERT

SCALE: SHEET OF SHEETS STA. TO STA.

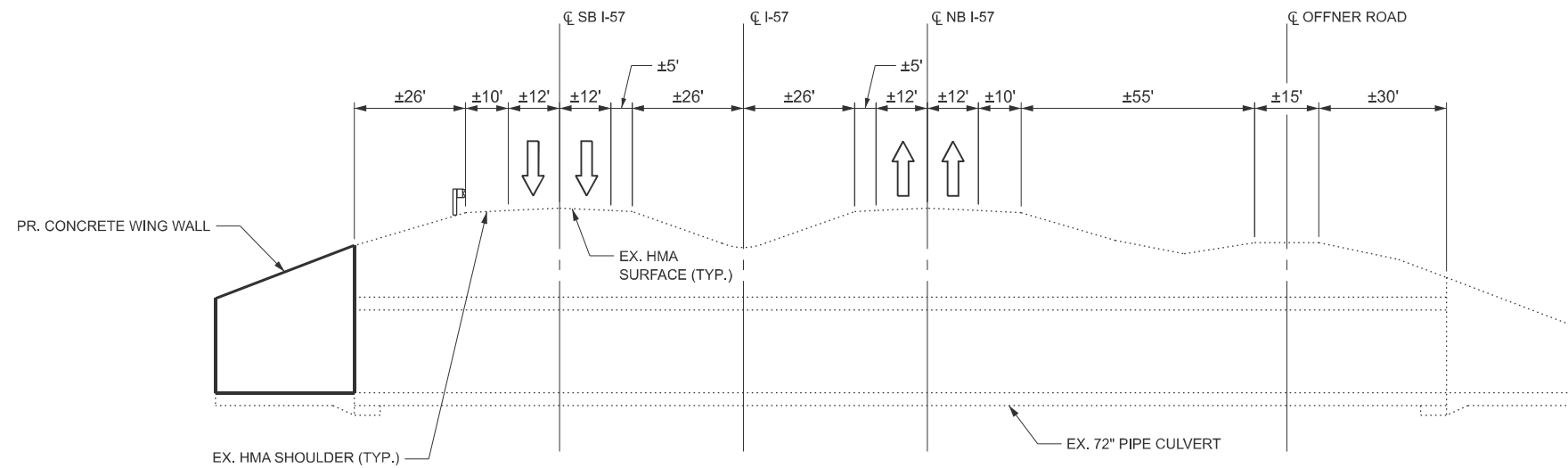
F.A.I. RTE.	SECTION	COUNTY	TOTAL SHEETS	SHEET NO.
57	(0404-1023K) C, BR 24	COOK / WILL	14	3
			CONTRACT NO. 62X31	
			ILLINOIS FED. AID PROJECT	



TYPICAL SECTION

AT STRUCTURE NO. 016-2290
LOOKING NORTH

ALL DIMENSIONS ARE PERPENDICULAR
TO THE CL OF I-57



TYPICAL SECTION

AT STRUCTURE NO. 099-0541
LOOKING NORTHEAST

MODEL: Default
FILE NAME: C:\Users\aseiber\OneDrive\Documents\Orion Admin - 2025011 - IDOT Various Phase II (D-91-046-25)WOC #2 - 62X31\CADD\Mod\62X31-Border.dgn



USER NAME = aseiber	DESIGNED -	REVISED -
	DRAWN -	REVISED -
	CHECKED -	REVISED -
PLOT DATE = 12/12/2025	DATE -	REVISED -

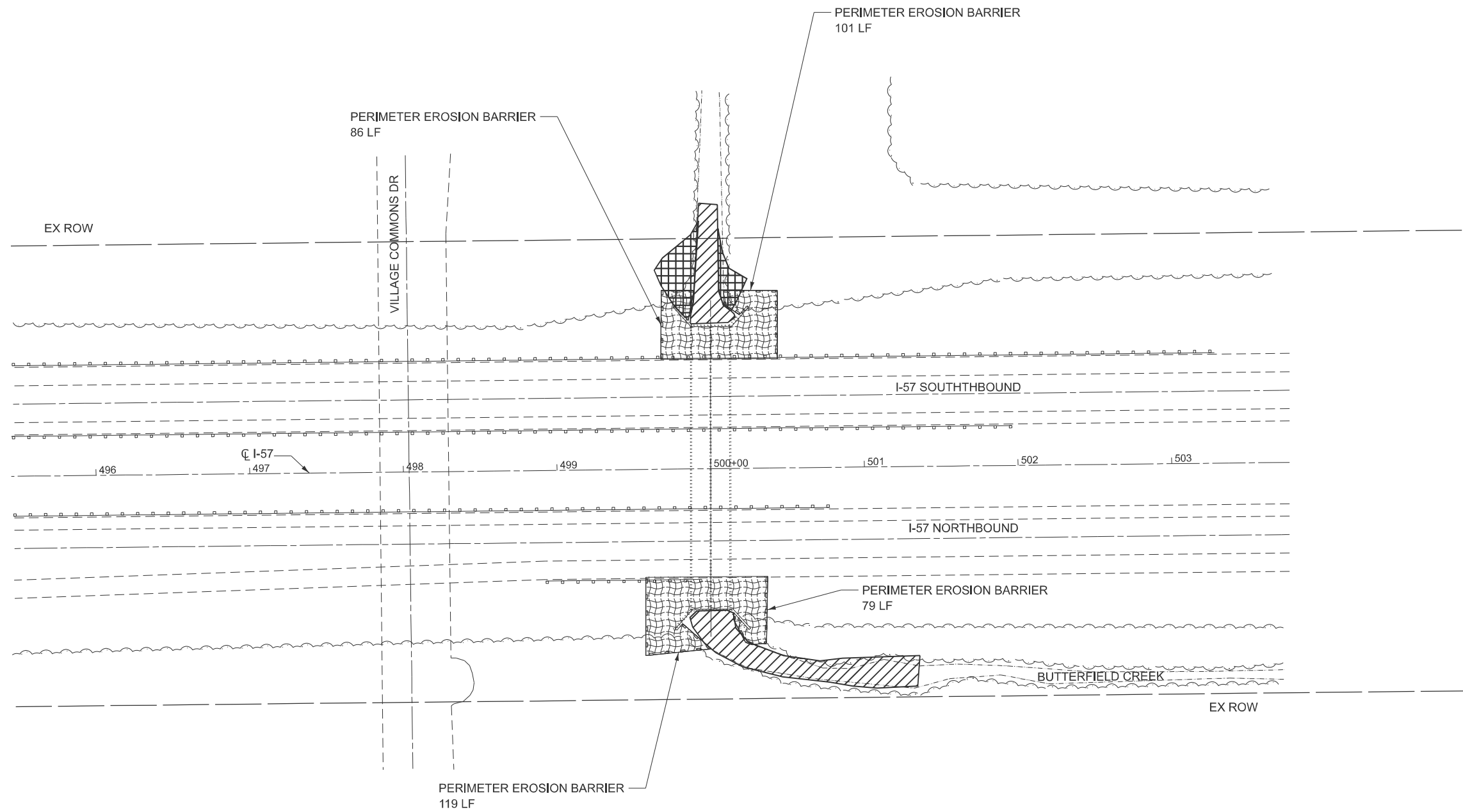
STATE OF ILLINOIS
DEPARTMENT OF TRANSPORTATION

TYPICAL SECTIONS
F.A.I. ROUTE 57 OVER BUTTERFIELD CREEK AND OVER CULVERT





SCALE: SHEET OF SHEETS STA. TO STA.

F.A.I. RTE.	SECTION	COUNTY	TOTAL SHEETS	SHEET NO.
57	(0404-1023K) C, BR 24	COOK / WILL	14	4
CONTRACT NO. 62X31				
ILLINOIS FED. AID PROJECT				

MODEL: Default
 FILE NAME: C:\Users\asaber\OneDrive\Engineering\Illinois\DOT\Various Phase II (D-91-046-25)\WC #2 - 62X31\CADD\Mod\62X31-Border.dgn



LEGEND

-  EROSION CONTROL BLANKET (SPECIAL) SEEDING, CLASS 4B (MODIFIED)
-  PERIMETER EROSION BARRIER
-  WETLANDS
-  OTHER SURFACE WATERS



USER NAME = aselber	DESIGNED -	REVISED -
	DRAWN -	REVISED -
	CHECKED -	REVISED -
PLOT DATE = 1/7/2026	DATE -	REVISED -

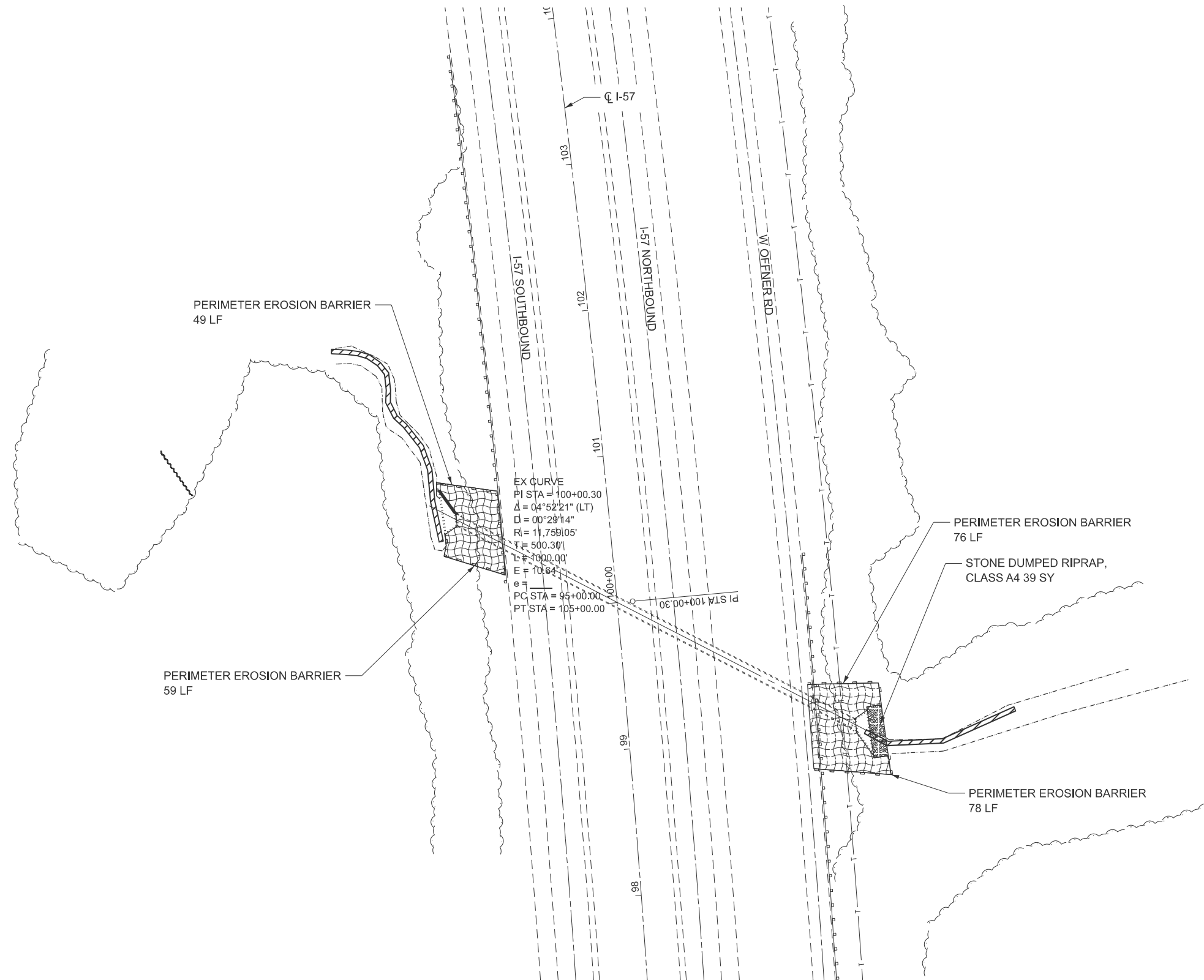
STATE OF ILLINOIS
DEPARTMENT OF TRANSPORTATION

EROSION CONTROL PLAN - S.N. 016-2290
F.A.I. ROUTE 57 OVER BUTTERFIELD CREEK AND OVER CULVERT





SCALE: SHEET OF SHEETS STA. TO STA.

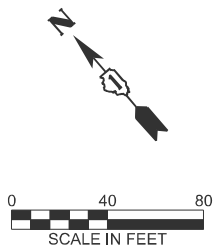
F.A.I. RTE.	SECTION	COUNTY	TOTAL SHEETS	SHEET NO.
57	(0404-1023K) C, BR 24	COOK / WILL	14	5
CONTRACT NO. 62X31				
ILLINOIS FED. AID PROJECT				

MODEL: Default
 FILE NAME: C:\Users\aseilber\OneDrive\Documents\Orion Admin - 2025011 - IDOT Various Phase II (D-91-046-25)\WC #2 - 62X31\CADD\Med\62X31-Border.dgn



LEGEND

-  STONE DUMPED RIPRAP, CLASS A4
-  EROSION CONTROL BLANKET (SPECIAL) SEEDING, CLASS 4B (MODIFIED)
-  PERIMETER EROSION BARRIER
-  OTHER SURFACE WATERS



USER NAME = aseilber	DESIGNED -	REVISED -
	DRAWN -	REVISED -
	CHECKED -	REVISED -
PLOT DATE = 1/7/2026	DATE -	REVISED -

STATE OF ILLINOIS
 DEPARTMENT OF TRANSPORTATION

EROSION CONTROL PLAN - S.N. 099-0541
 F.A.I. ROUTE 57 OVER BUTTERFIELD CREEK AND OVER CULVERT

SCALE: SHEET OF SHEETS STA. TO STA.

F.A.I. RTE.	SECTION	COUNTY	TOTAL SHEETS	SHEET NO.
57	(0404-1023K) C, BR 24	COOK / WILL	14	6
CONTRACT NO. 62X31				
ILLINOIS FED. AID PROJECT				

Existing Structure: SN 016-2290 is a two-barrel reinforced concrete box culvert constructed in 1967. The culvert length is approximately 186' with each barrel opening measuring 9'x12'.

SCOPE OF WORK

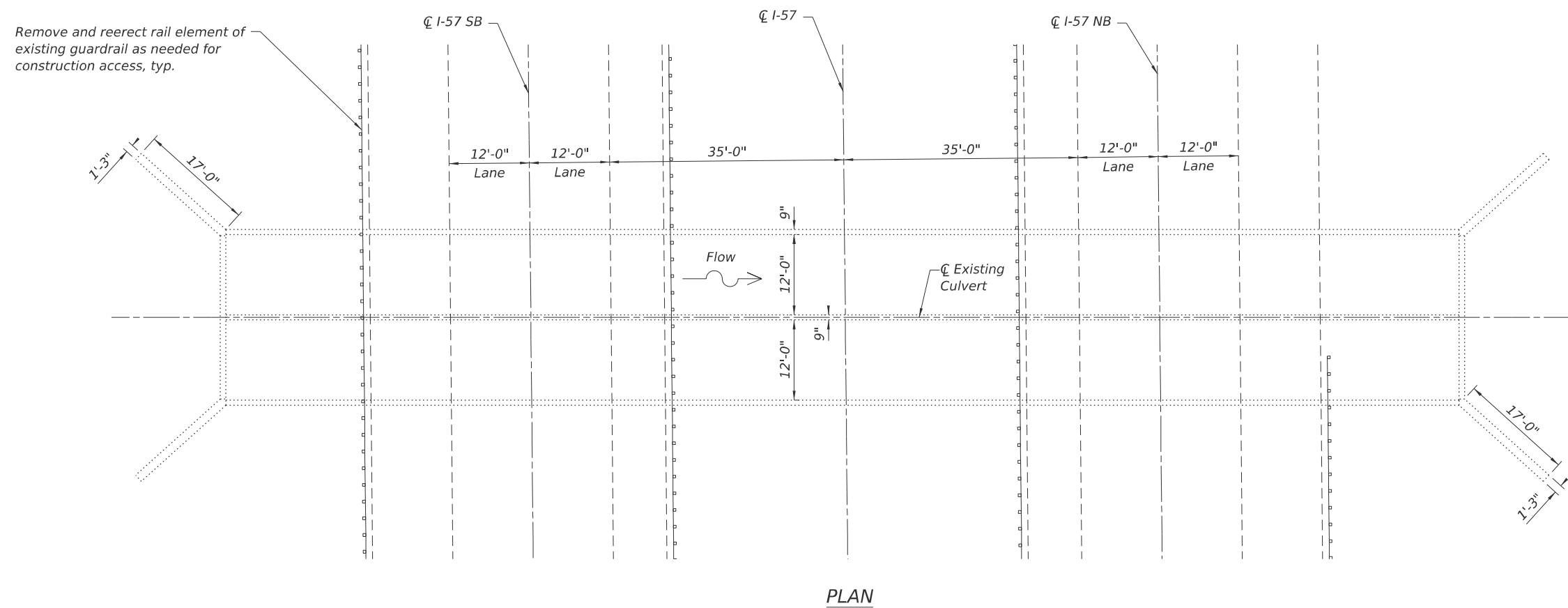
1. Perform concrete repairs.

INDEX OF SHEETS

- S1 General Plan
- S2 Culvert Repairs

TOTAL BILL OF MATERIALS

ITEM	UNIT	TOTAL
Structural Repair of Concrete (Depth Equal to or Less than 5 Inches)	Sq. Ft.	128

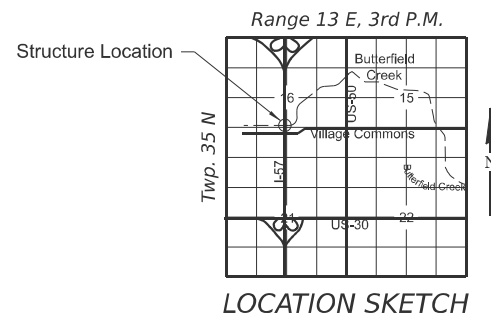


PLAN



Exp 11-30-26

DESIGN SPECIFICATIONS
2002 AASHTO Standard Specifications for Highway Bridges 17th Edition



GENERAL NOTES

1. Plan dimensions and details relative to the existing structure have been taken from existing plans are subjected to normal construction variations. The Contractor shall field verify existing dimensions and details affecting new construction and make necessary approved adjustments prior to construction or ordering of materials. Such variations shall not be cause for additional compensation for a change in scope of the work, however, the Contractor will be paid for the quantity actually furnished at the unit bid for the work.
2. Existing reinforcement bars extending into the removal area shall be cleaned, straightened, and incorporated into the new construction. Any reinforcement bars that are damaged during concrete removal shall be replaced with an approved bar splicer or anchorage system at the Contractor's expense.

GENERAL PLAN
I-57 OVER BUTTERFIELD CREEK
F.A.I. ROUTE 57 - SEC. (0404-1023K) C, BR 24
COOK COUNTY
STRUCTURE NO. 016-2290

MODEL: Default
FILE NAME: C:\Users\aseiber\OneDrive\Engineering\Illinois\DOT\Various Phase II (D-91-046-25)\WO #2 - 62X31\CADD\Med\62X31-1-Border.dgn



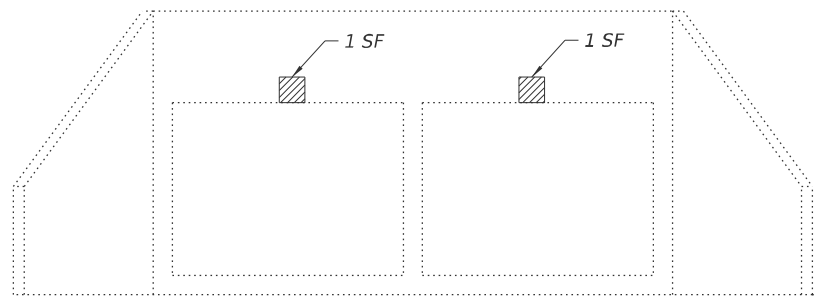
USER NAME = aseiber	DESIGNED -	REVISED -
	DRAWN -	REVISED -
	CHECKED -	REVISED -
PLOT DATE = 12/12/2025	DATE -	REVISED -

STATE OF ILLINOIS
DEPARTMENT OF TRANSPORTATION

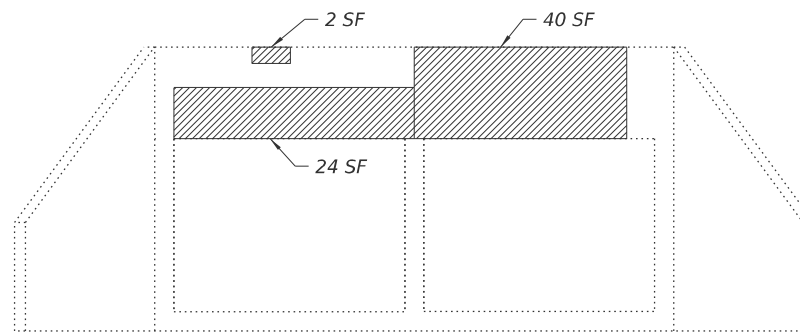
GENERAL PLAN - S.N. 016-2290
F.A.I. ROUTE 57 OVER BUTTERFIELD CREEK AND OVER CULVERT

SCALE: SHEET S1 OF S2 SHEETS STA. TO STA.

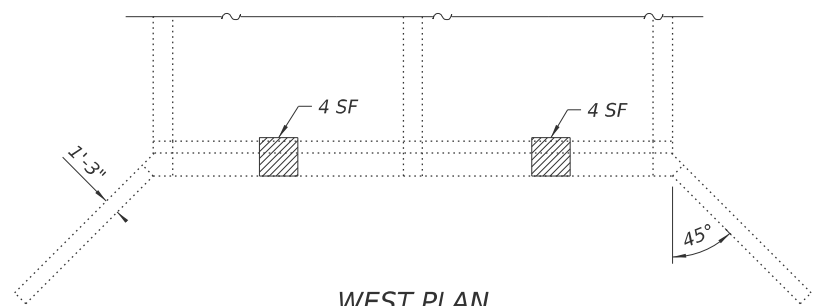
F.A.I. RTE.	SECTION	COUNTY	TOTAL SHEETS	SHEET NO.
57	(0404-1023K) C, BR 24	COOK / WILL	14	7
CONTRACT NO. 62X31			ILLINOIS FED. AID PROJECT	



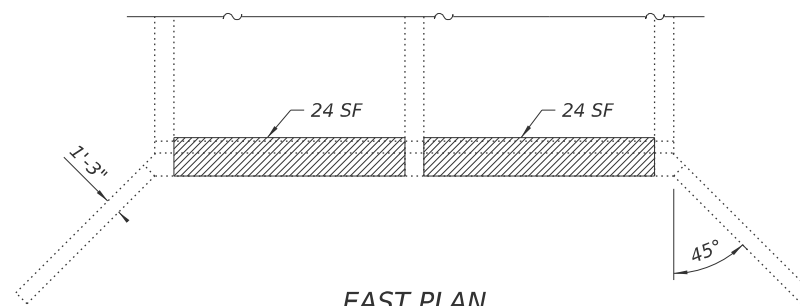
WEST ELEVATION



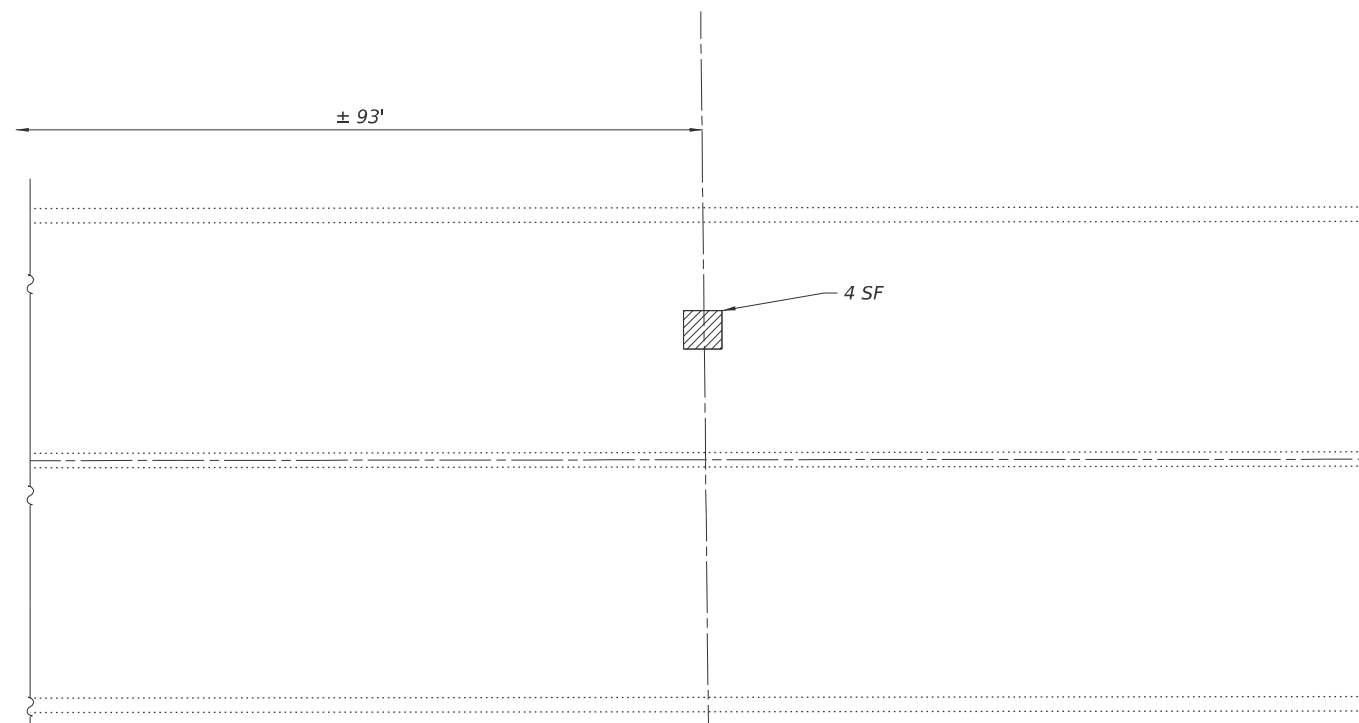
EAST ELEVATION



WEST PLAN
(Showing Underside of Top Slab)



EAST PLAN
(Showing Underside of Top Slab)



PARTIAL PLAN
(Showing Underside of Top Slab)



BILL OF MATERIALS

ITEM	UNIT	TOTAL
Structural Repair of Concrete (Depth Equal to or Less than 5 Inches)	Sq. Ft.	128

LEGEND

Structural Repair of Concrete (Depth Equal to or Less than 5 Inches)

MODEL: Default
FILE NAME: C:\Users\aselber\OneDrive\Engineering\Illinois\62X31\CADD\Mod\62X31-Border.dgn
IDOT Various Phase II (D-91-046-25) W/O #2 - 62X31
20250111 - IDOT Various Phase II (D-91-046-25) W/O #2 - 62X31
CADD\Mod\62X31-Border.dgn



USER NAME = aselber	DESIGNED -	REVISED -
	DRAWN -	REVISED -
	CHECKED -	REVISED -
PLOT DATE = 12/12/2025	DATE -	REVISED -

STATE OF ILLINOIS
DEPARTMENT OF TRANSPORTATION

CULVERT REPAIRS - S.N. 016-2290
F.A.I. ROUTE 57 OVER BUTTERFIELD CREEK AND OVER CULVERT

SCALE: SHEET S2 OF S2 SHEETS STA. TO STA.

F.A.I. RTE.	SECTION	COUNTY	TOTAL SHEETS	SHEET NO.
57	(0404-1023K) C, BR 24	COOK / WILL	14	8
ILLINOIS FED. AID PROJECT			CONTRACT NO. 62X31	

Existing Structure: SN099-0541 is a 72" dia. reinforced concrete culvert constructed in 1998. The culvert length is approximately 350'.

No Salvage

SCOPE OF WORK

1. Remove and replace northwest wingwall.
2. Perform concrete repairs.
3. Apply concrete sealer to the new concrete surfaces.
4. Place stone dumped riprap at the east apron.

DESIGN SPECIFICATIONS

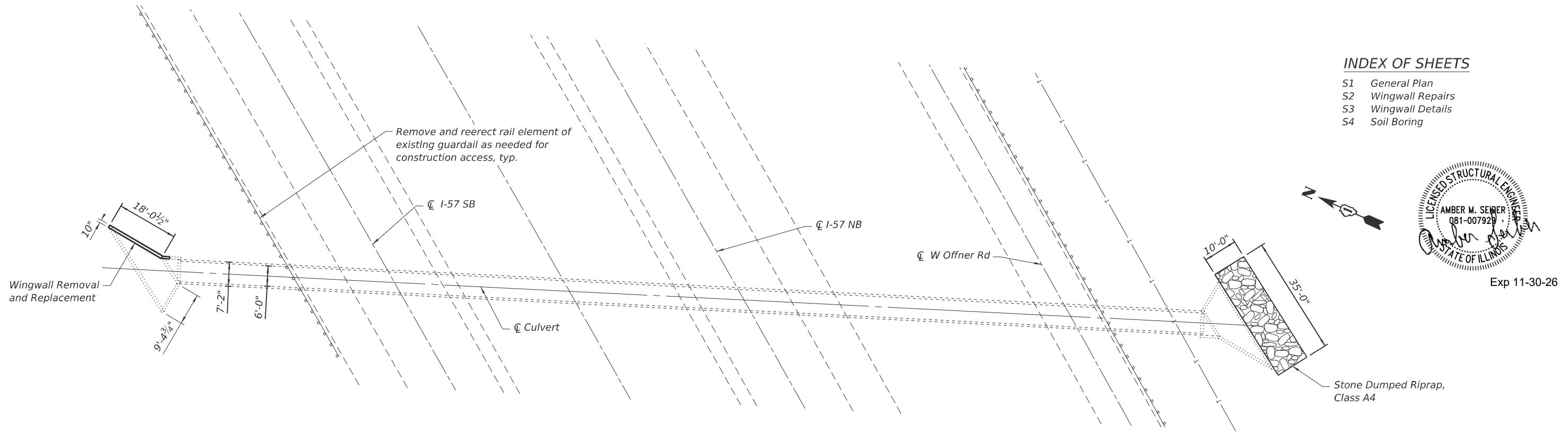
2002 AASHTO Standard Specifications for Highway Bridges 17th Edition

DESIGN STRESSES

$f_c = 3,500$ psi (Concrete)
 $f_y = 60,000$ psi (Reinforcement)

TOTAL BILL OF MATERIAL

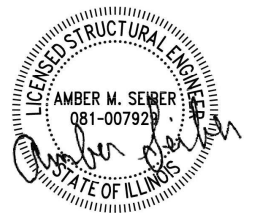
ITEM	UNIT	TOTAL
Stone dumped Riprap, Class 4A	Sq. Yd.	39
Concrete Removal	Cu. Yd.	2.9
Structure Excavation	Cu. Yd.	15
Concrete Structures	Cu. Yd.	3.5
Reinforcement Bars, Epoxy Coated	Pound	730
Granular Backfill for Structures	Cu. Yd.	15
Epoxy Crack Injection	Foot	15
Concrete Sealer	Sq. Ft.	135
Structural Repair of Concrete (Depth Equal to or Less than 5 Inches)	Sq. Ft.	2



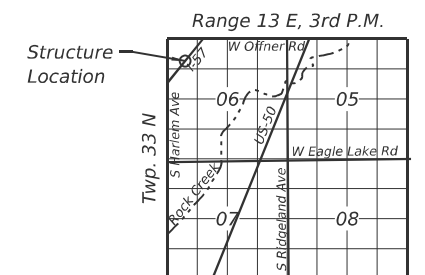
PLAN

INDEX OF SHEETS

- S1 General Plan
- S2 Wingwall Repairs
- S3 Wingwall Details
- S4 Soil Boring



Exp 11-30-26



LOCATION SKETCH

GENERAL NOTES

1. Plan dimensions and details relative to the existing structure have been taken from existing plans are subjected to normal construction variations. The Contractor shall field verify existing dimensions and details affecting new construction and make necessary approved adjustments prior to construction or ordering of materials. Such variations shall not be cause for additional compensation for a change in scope of the work, however, the Contractor will be paid for the quantity actually furnished at the unit bid for the work.
2. Reinforcement bars designated (E) shall be epoxy coated.

GENERAL PLAN
I-57 OVER CULVERT
(0.38 MILES NORTH OF HARLEM AVE)
F.A.I. ROUTE 57 - SEC. (0404-1023K) C, BR 24
WILL COUNTY
STRUCTURE NO. 099-0541

MODEL: Default
 FILE NAME: C:\Users\aseiber\OneDrive\Engineering\Illinois\DOT\Various Phase II (D-91-046-25)\WO #2 - 62X31\CADD\Med\62X31-Border.dgn
 C:\Users\aseiber\OneDrive\Engineering\Illinois\DOT\Various Phase II (D-91-046-25)\WO #2 - 62X31\CADD\Med\62X31-Border.dgn



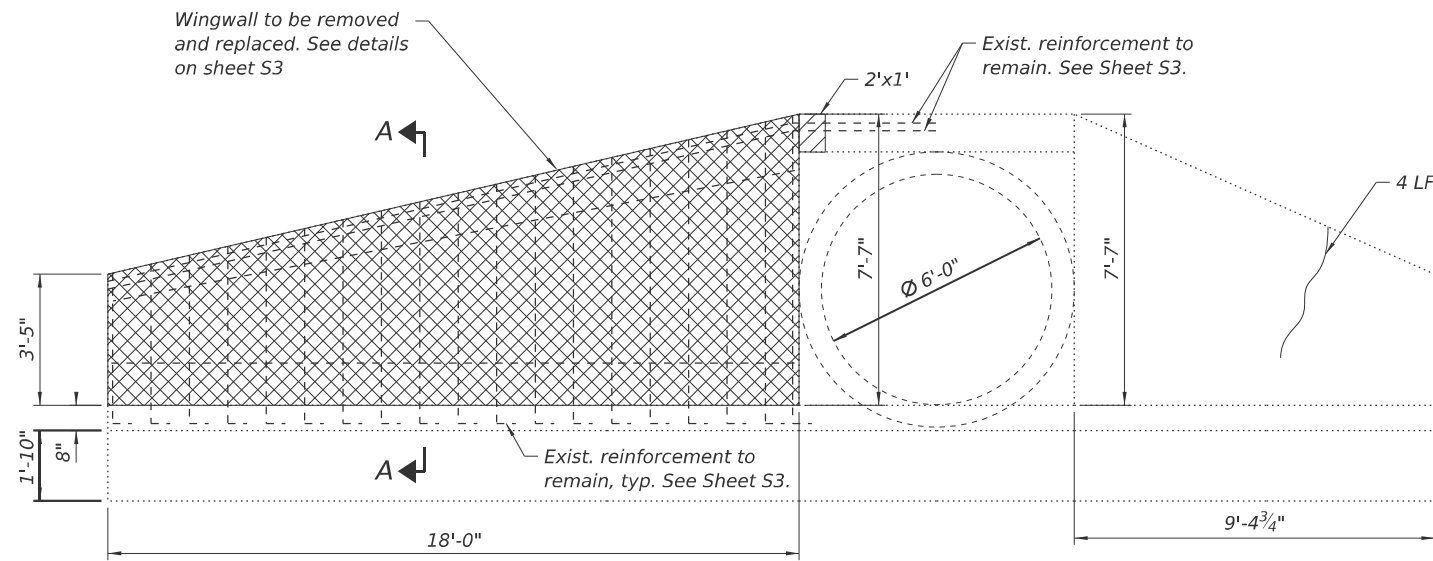
USER NAME = aseiber	DESIGNED -	REVISED -
	DRAWN -	REVISED -
	CHECKED -	REVISED -
PLOT DATE = 12/12/2025	DATE -	REVISED -

STATE OF ILLINOIS
DEPARTMENT OF TRANSPORTATION

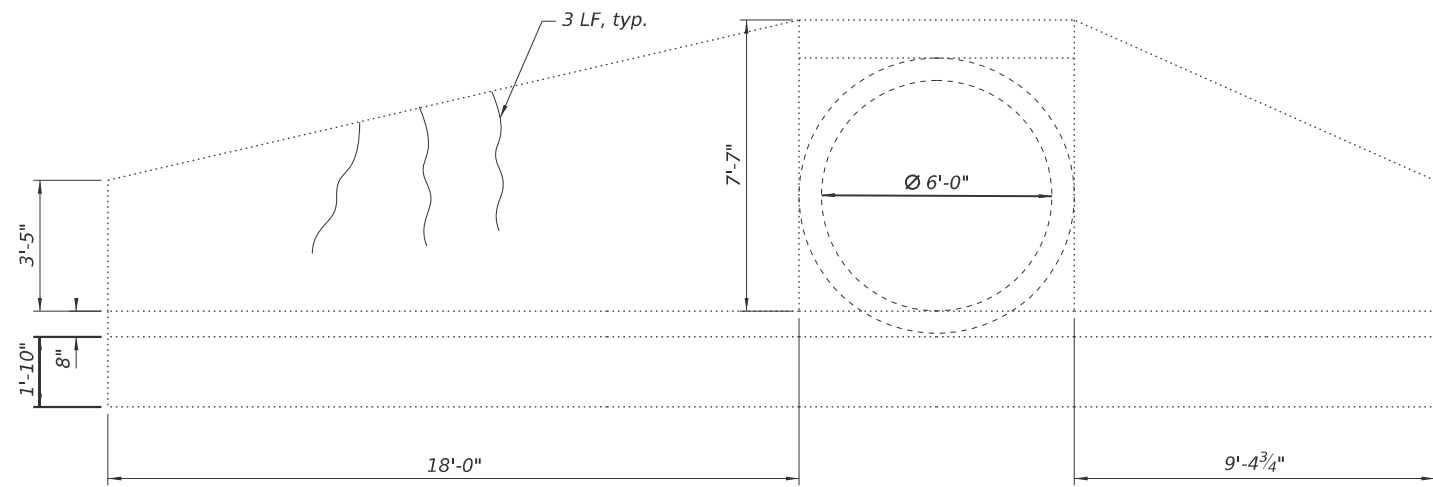
GENERAL PLAN - S.N. 099-0541
F.A.I. ROUTE 57 OVER BUTTERFIELD CREEK AND OVER CULVERT

SCALE: SHEET S1 OF S4 SHEETS STA. TO STA.

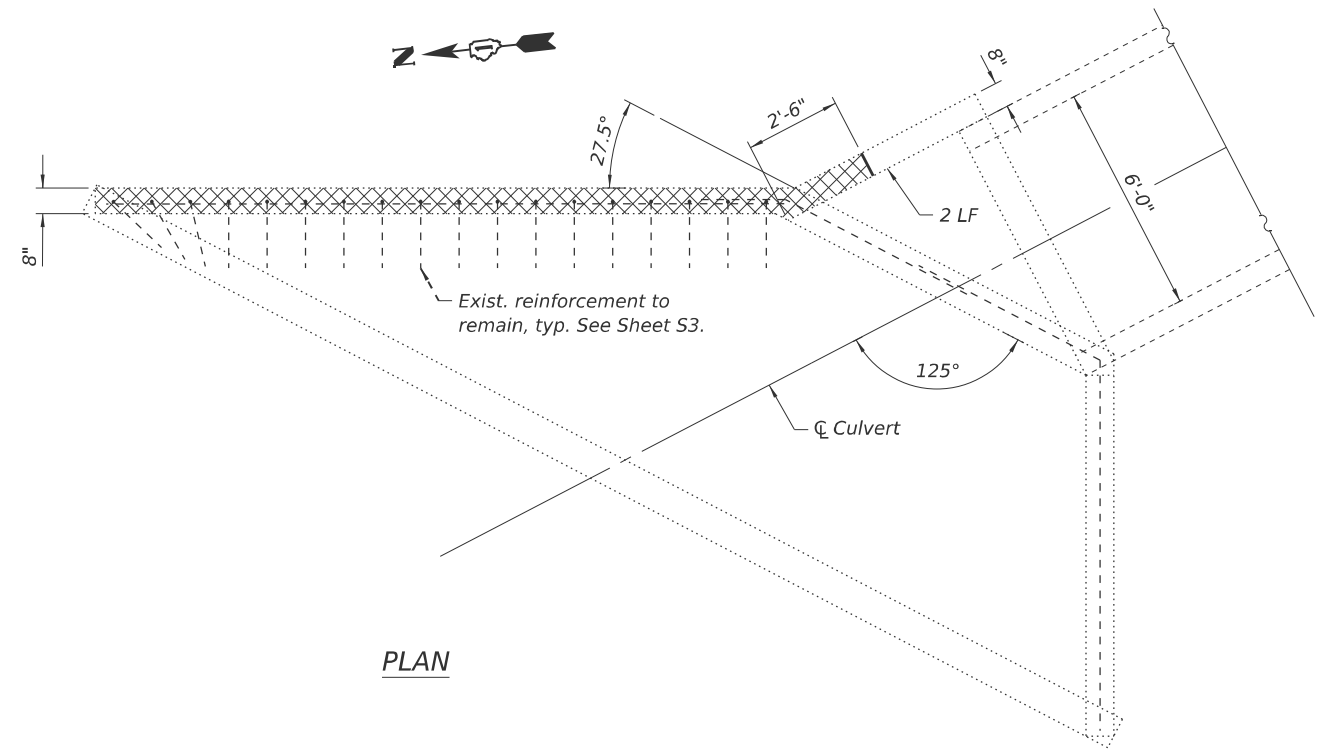
F.A.I. RTE.	SECTION	COUNTY	TOTAL SHEETS	SHEET NO.
57	(0404-1023K) C, BR 24	COOK / WILL	14	9
			CONTRACT NO. 62X31	
ILLINOIS FED. AID PROJECT				



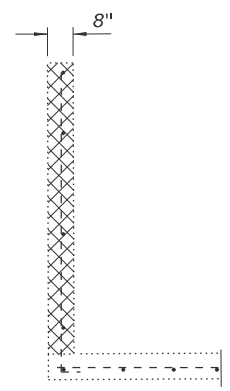
WEST END SECTION



EAST END SECTION



PLAN



SECTION A-A

BILL OF MATERIALS

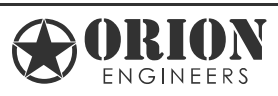
ITEM	UNIT	TOTAL
Concrete Removal	Cu. Yd.	2.9
Epoxy Crack Injection	Foot	15
Structural Repair of Concrete (Depth Equal to or Less than 5 Inches)	Sq. Ft.	2

Note:
Existing reinforcement bars extending into the removal area shall be cleaned, straightened, and incorporated into the new construction. Any reinforcement bars that are damaged during concrete removal shall be replaced with an approved bar splicer or anchorage system at the Contractor's expense.

LEGEND

- Concrete Removal
- Epoxy Crack Injection
- Structural Repair of Concrete (Depth Equal to or Less than 5 Inches)

MODEL: Default
FILE NAME: C:\Users\aseilber\OneDrive\Engineering\Illinois\DOT\Various Phase II (0-91-046-25)\WO #2 - 62X31\CADD\Med\62X31-Border.dgn
DOT Various Phase II (0-91-046-25)\WO #2 - 62X31\CADD\Med\62X31-Border.dgn



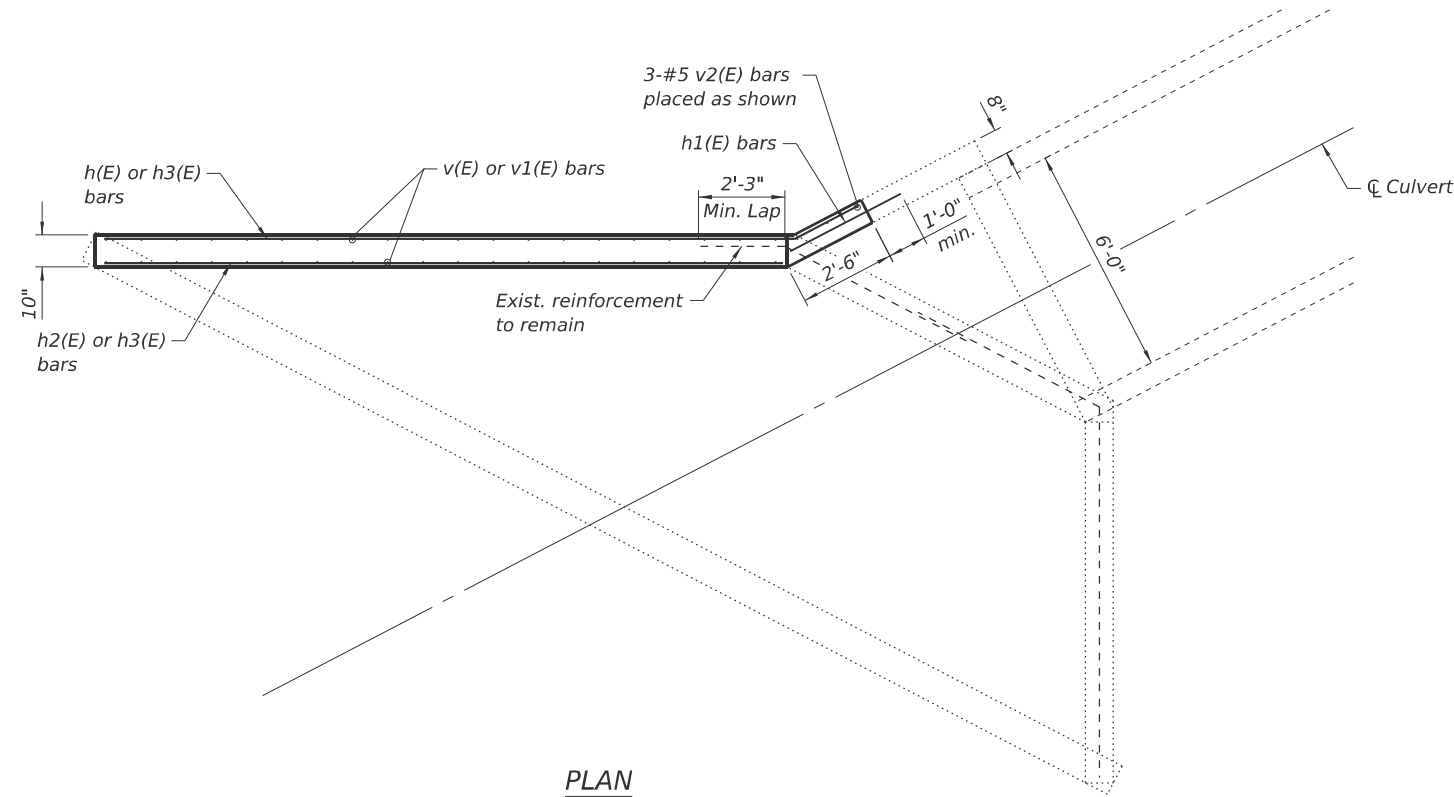
USER NAME = aseilber	DESIGNED -	REVISED -
	DRAWN -	REVISED -
	CHECKED -	REVISED -
PLOT DATE = 1/16/2026	DATE -	REVISED -

STATE OF ILLINOIS
DEPARTMENT OF TRANSPORTATION

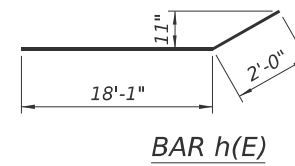
WINGWALL REPAIRS - S.N. 099-0541
F.A.I. ROUTE 57 OVER BUTTERFIELD CREEK AND OVER CULVERT

F.A.I. RTE.	SECTION	COUNTY	TOTAL SHEETS	SHEET NO.
57	(0404-1023K) C, BR 24	COOK / WILL	14	10
CONTRACT NO. 62X31				
ILLINOIS FED. AID PROJECT				

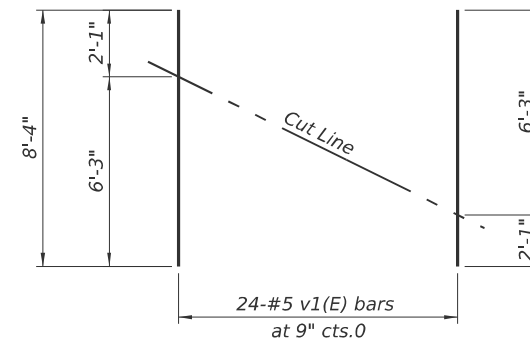
SCALE: SHEET S2 OF S4 SHEETS STA. TO STA.



PLAN



BAR h(E)



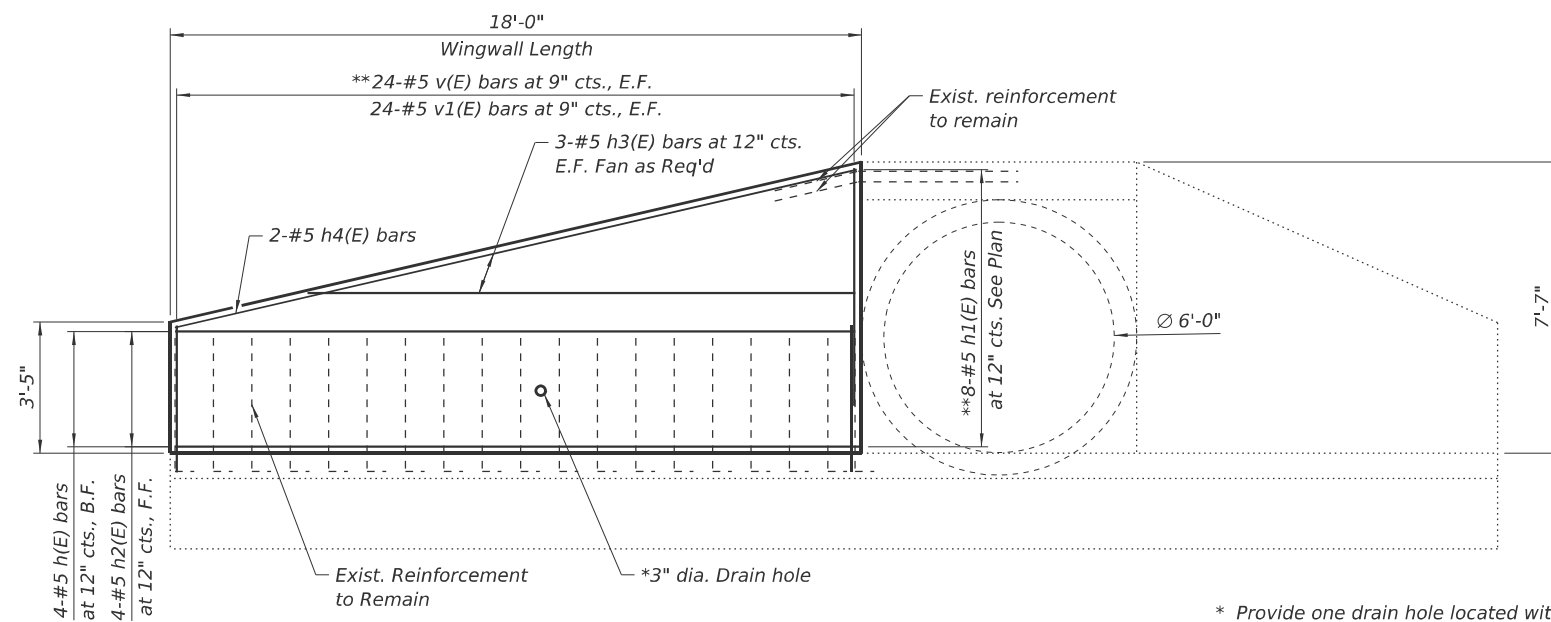
FIELD CUTTING DIAGRAM

Order bars full length. Use remainder of bars in the opposite face of wingwall

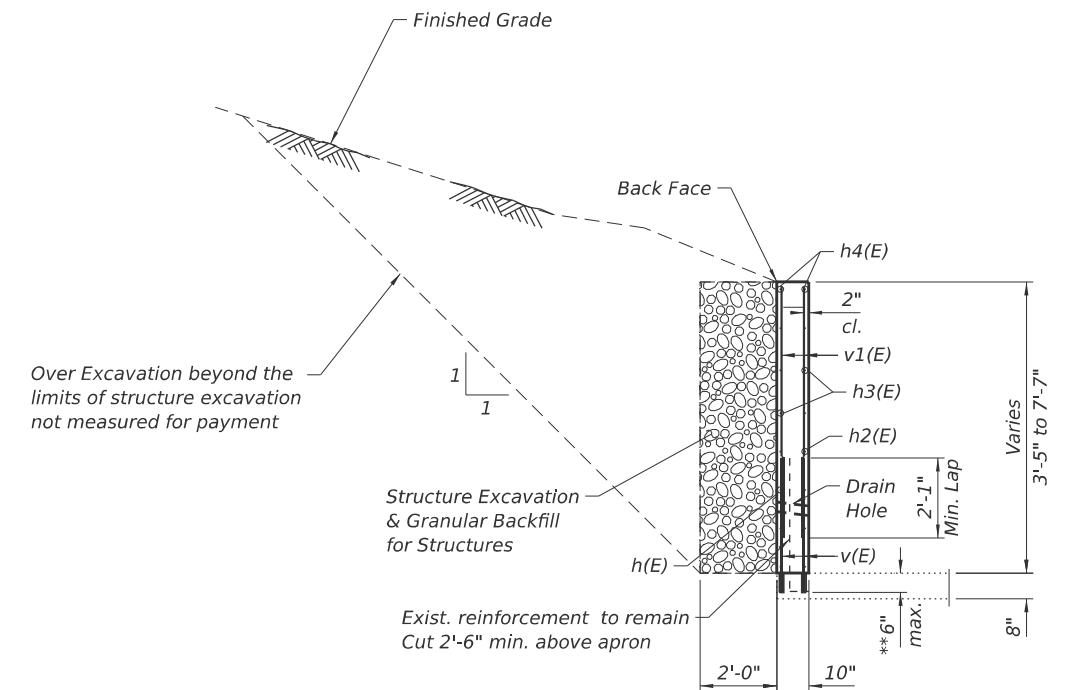
BILL OF MATERIAL

Bar	No.	Size	Length	Shape
h(E)	4	#5	20'-1"	
h1(E)	8	#5	3'-3"	
h2(E)	4	#5	17'-8"	
h3(E)	6	#5	14'-5"	
h4(E)	2	#5	18'-2"	
v(E)	48	#5	3'-9"	
v1(E)	24	#5	8'-4"	
v2(E)	3	#5	7'-3"	
Structure Excavation			Cu. Yd.	15
Concrete Structures			Cu. Yd.	3.5
Reinforcement Bars, Epoxy Coated			Pound	730
Granular Backfill for Structures			Cu. Yd.	15
Concrete Sealer			Sq. Ft.	166

Note:
Existing reinforcement bars extending into the removal area shall be cleaned, straightened, and incorporated into the new construction. Any reinforcement bars that are damaged during concrete removal shall be replaced with an approved bar splicer or anchorage system at the Contractor's expense.



ELEVATION



SECTION THRU WINGWALL

- * Provide one drain hole located within the lower 1/3 of the clear rise and conforming to the requirements of Article 503.11 of the Standard Specifications.
- ** Drill and Grout #5 h1(E) or v(E) bars to the depths shown according to Article 509.06 of the Standard Specifications. Drilled holes shall be roughened per manufacturer's recommendations. Contractor to take necessary precautions to prevent drilled hole interference with existing reinforcement.

MODEL: Default
FILE NAME: C:\Users\asibenton\OneDrive\Documents\ORION Admin - 20250111 - IDOT Various Phase II (0-91046-25)W/O #2 - 62X31\CADD\Med\62X31-Border.dgn



USER NAME = aselber	DESIGNED -	REVISED -
	DRAWN -	REVISED -
	CHECKED -	REVISED -
PLOT DATE = 12/12/2025	DATE -	REVISED -

STATE OF ILLINOIS
DEPARTMENT OF TRANSPORTATION

WINGWALL DETAILS - S.N. 099-0541
F.A.I. ROUTE 57 OVER BUTTERFIELD CREEK AND OVER CULVERT

SCALE: SHEET S3 OF S4 SHEETS STA. TO STA.

F.A.I. RTE.	SECTION	COUNTY	TOTAL SHEETS	SHEET NO.
57	(0404-1023K) C, BR 24	COOK / WILL	14	11
CONTRACT NO. 62X31				
ILLINOIS FED. AID PROJECT				



SOIL BORING LOG

Date 9/10/25

ROUTE FAI 57 DESCRIPTION I-57 over Rock Creek LOGGED BY ME
 SECTION 0405-1023k LOCATION NW Corner of SEC. 6, TWP. 33N, RNG. 13E, 3rd PM
Latitude 41°22'54.696", Longitude -87°46'53.0436"
 COUNTY Will DRILLING METHOD HSA HAMMER TYPE Auto

STRUCT. NO.	Station	D E P T H (ft)	B L O W S (/6")	U C S Qu (tsf)	M O I S T (%)	Surface Water Elev.	Stream Bed Elev.	D E P T H (ft)	B L O W S (/6")	U C S Qu (tsf)	M O I S T (%)
099-0541	NA					-	-				
SB-01	NA					80.5	80.4				
	0.0 ft -					80.7	80.7				
	Ground Surface Elev. 100.00										
Stiff to Very Stiff, Brown, Moist, SILTY CLAY											
		2							2		
		3							3		21
		5							5		
		77.00									
		3							3		
		3	1.4		18				5	1.7	14
		3	B						6	B	
		-5							-25		
		3							3		
		3	2.6		16				5	1.9	12
		4	B						7	B	
		2							5		
		2	1.1		16				5	2.6	14
		2	B						9	B	
		70.50									
	90.00 -10								-30		
Medium Stiff, Black and Brown mottled, Moist, SILTY CLAY (possible buried topsoil)											
		1							4		
		2	0.5		20				5	1.0	21
		3	B						8	B	
	87.50										
Very Stiff, Brown and Gray mottled, Moist, SILTY CLAY											
		3									
		4	3.1		17						
		5	B								
		-15							-35		
		3							5		
		3	2.5		20				7	1.9	16
		4	B						9	B	
		63.50									
	82.00										
Very Stiff, Gray, Moist, SILTY CLAY											
		3									
		5	3.3		17						
		5	B								
	80.50										
		-20							-40		
Note: Ground surface elevation at the boring location assumed to be 100 feet.											
End of Boring											

The Unconfined Compressive Strength (UCS) Failure Mode is indicated by (B-Bulge, S-Shear, P-Penetrometer)
 The SPT (N value) is the sum of the last two blow values in each sampling zone (AASHTO T206)

BBS, form 137 (Rev. 8-99)

MODEL: Default
FILE NAME: C:\Users\aseiber\OneDrive\Documents\Orion Admin - 2025011 - IDOT Various Phase II (D-91-046-25)\WC #2 - 62X31\CADD\Med\62X31-Border.dgn

SOIL BORING I-57 OVER ROCK CREEK, TSRS BORING GPJ IL_DOT.GDT 9/15/25



USER NAME = aseiber	DESIGNED -	REVISED -
	DRAWN -	REVISED -
	CHECKED -	REVISED -
PLOT DATE = 12/12/2025	DATE -	REVISED -

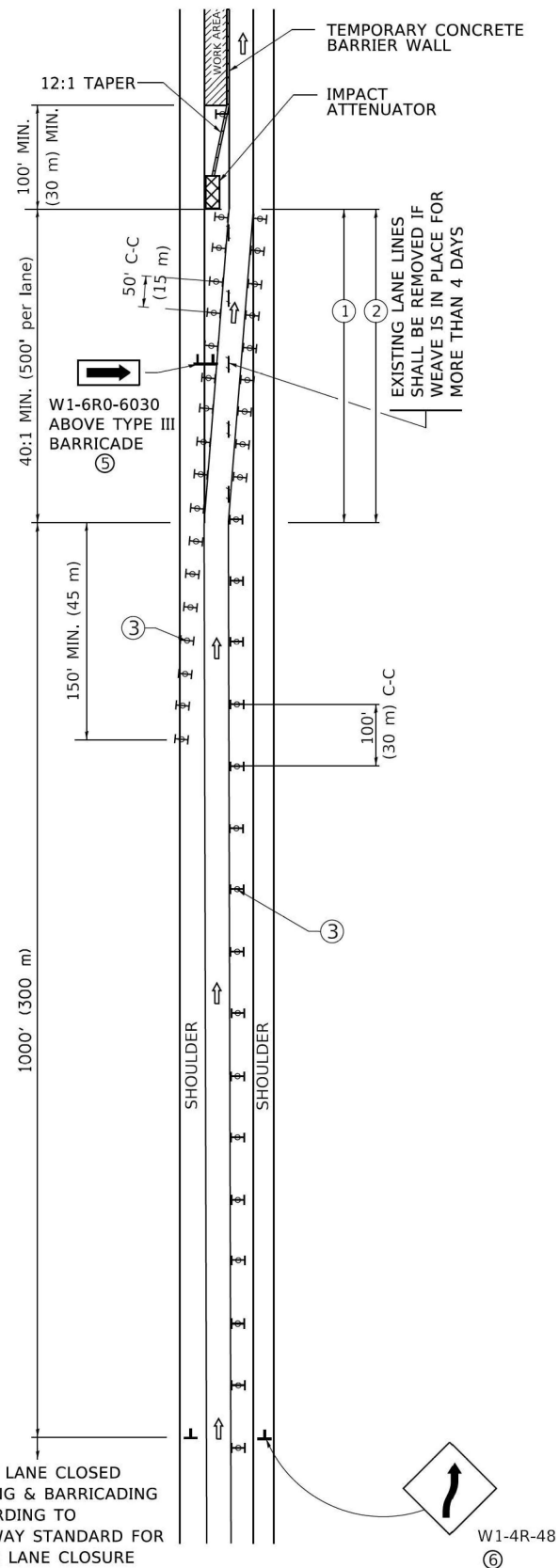
**STATE OF ILLINOIS
DEPARTMENT OF TRANSPORTATION**

**SOIL BORING - S.N. 099-0541
F.A.I. ROUTE 57 OVER BUTTERFIELD CREEK AND OVER CULVERT**

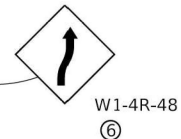
F.A.I. RTE.	SECTION	COUNTY	TOTAL SHEETS	SHEET NO.
57	(0404-1023K) C, BR 24	COOK / WILL	14	12
CONTRACT NO. 62X31				
ILLINOIS FED. AID PROJECT				

SCALE: SHEET S4 OF S4 SHEETS STA. TO STA.

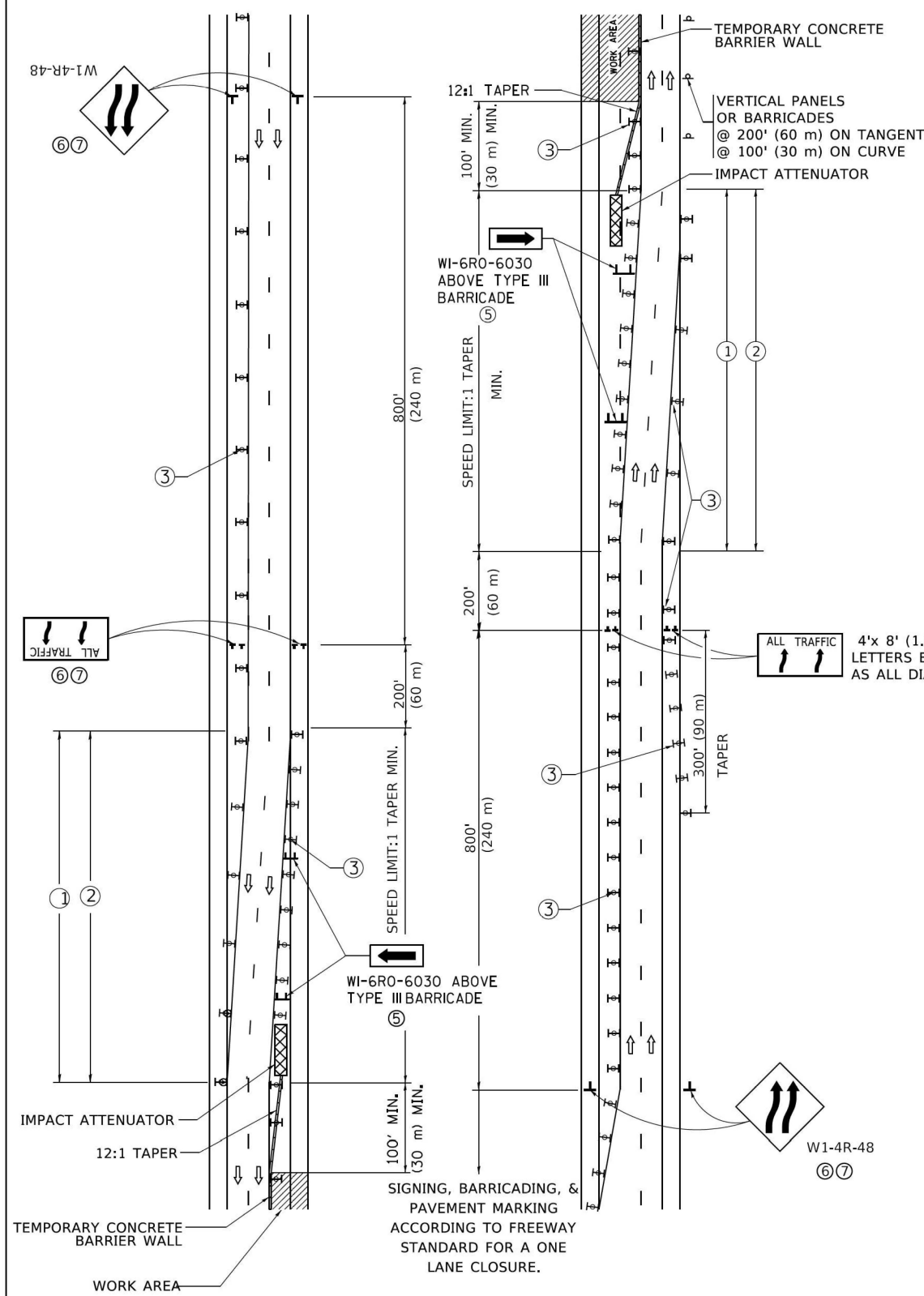
SINGLE LANE WEAVE



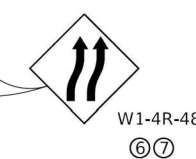
RIGHT LANE CLOSED SIGNING & BARRICADING ACCORDING TO FREEWAY STANDARD FOR A ONE LANE CLOSURE



MULTI-LANE WEAVE



4'x 8' (1.2 m x 2.4 m); 1 (25) BORDER; 10 (250) CAPITAL LETTERS BACKGROUND SHEETING SHALL BE THE SAME AS ALL DIAMOND SHAPED CONSTRUCTION SIGNS.



- SYMBOLS**
- DIRECTION OF TRAFFIC
 - WORK AREA
 - SIGN ON PORTABLE OR PERMANENT SUPPORT
 - TYPE II BARRICADE OR DRUM WITH MONO-DIRECTIONAL STEADY BURNING LIGHT
 - TEMPORARY CONCRETE BARRIER WALL
 - IMPACT ATTENUATOR
 - W24-1-48

GENERAL NOTES:

- ① EXISTING CONFLICTING PAVEMENT MARKING LINES SHALL BE REMOVED. PAVEMENT MARKING REMOVAL SHALL NOT BE REQUIRED FOR SINGLE LANE WEAVES UNDER 4 DAYS IN DURATION.
- ② CONTINUOUS REFLECTIVE TEMPORARY PAVEMENT MARKING TAPE SHALL BE PLACED THROUGHOUT THE TAPER AND FOR 300' (90 m) ALONG SIDE THE WORK AREA WHERE THE CLOSURE TIME IS GREATER THAN FOURTEEN DAYS. THE LEFT EDGE LINE SHALL BE YELLOW AND THE RIGHT EDGE LINE SHALL BE WHITE. FOR MULTI-LANE WEAVES LANE LINES SHALL BE 5 INCH, 10'-30' (3 m-9 m) SKIP DASH, WHITE.
- ③ PLASTIC DRUMS WITH STEADY BURN LIGHTS AT 50' (15 m) C-C SPACING IN TAPERS AND 100' (30 m) C-C SPACING IN TANGENTS.
- ④ ALL SIGNS SHALL BE POST MOUNTED IF THE CLOSURE TIME EXCEEDS FOUR DAYS.
- ⑤ TYPE III BARRICADES MAY BE OMITTED FOR SINGLE-LANE WEAVES UNDER 24-HOURS IN DURATION. W1-6 SIGNS WILL STILL BE REQUIRED. IF THE WIDTH OF OFFSET IS LESS THAN 6' THEN THE TYPE III BARRICADE WITH ATTACHED ARROW SIGN PANEL CAN BE ELIMINATED IN THE TAPER AREAS.
- ⑥ WHEN THE LENGTH OF THE SHIFTED SEGMENT (DISTANCE BETWEEN WEAVE POINTS) IS LESS THAN 1500', DOUBLE REVERSE CURVE SIGNS (W24-1) SHOULD BE USED INSTEAD OF THE REVERSE CURVE (W1-4) SIGNS. ARROWS ON THE 4'X8' "ALL TRAFFIC" SIGNS SHALL BE THE SAME SHAPE.
- ⑦ THE NUMBER OF ARROWS ON THESE SIGNS SHALL MATCH THE NUMBER OF LANES OPEN TO TRAFFIC.

ALL DIMENSIONS ARE IN INCHES (MILLIMETERS) UNLESS OTHERWISE SHOWN

MODEL: Default
FILE NAME: C:\Users\aseiber\OneDrive\Engineering\Illinois\DOT\Various Phase II (D-91-046-25)\WC #2 - 62X31\CADD\Med\62X31-Border.dgn



USER NAME = aseiber	DESIGNED -	REVISED -
	DRAWN -	REVISED -
	CHECKED -	REVISED -
PLOT DATE = 12/12/2025	DATE -	REVISED -

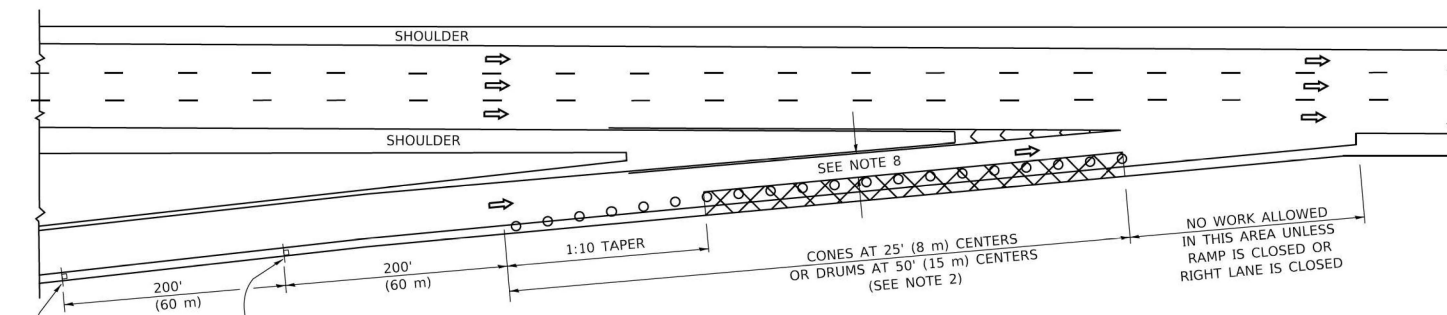
STATE OF ILLINOIS
DEPARTMENT OF TRANSPORTATION

TRAFFIC CONTROL DETAILS FOR
FREEWAY SINGLE & MULTI-LANE WEAVE

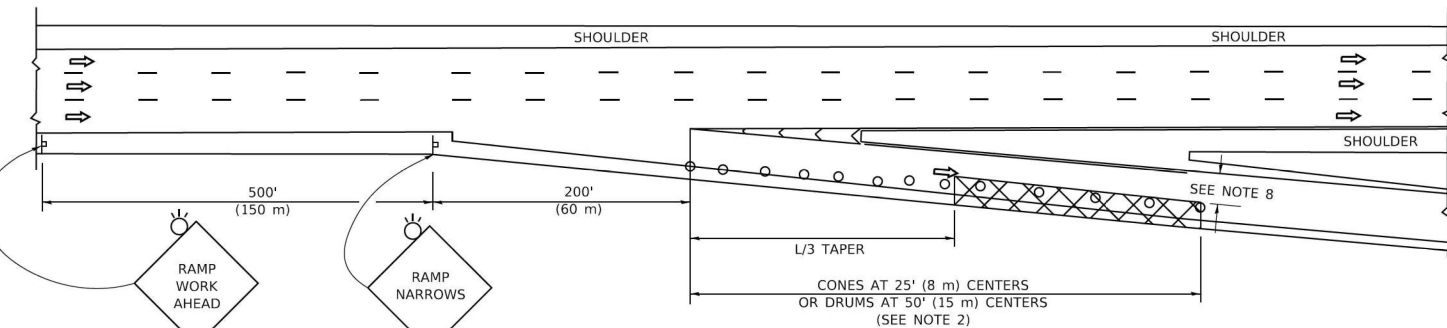
SCALE: SHEET OF SHEETS STA. TO STA.

F.A.I. RTE.	SECTION	COUNTY	TOTAL SHEETS	SHEET NO.
57	(0404-1023K) C, BR 24	COOK / WILL	14	13
TC-09		CONTRACT NO. 62X31		
ILLINOIS FED. AID PROJECT				

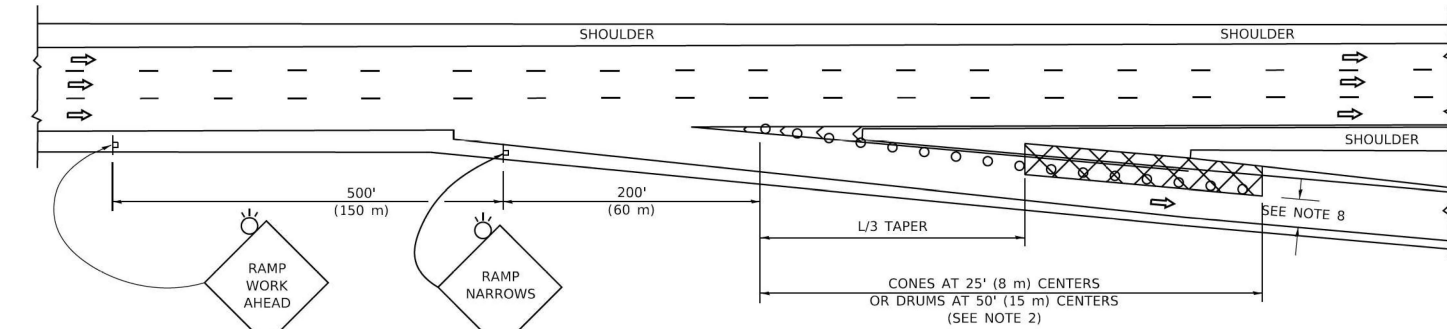
PARTIAL RAMP CLOSURE DETAILS



TYPICAL ENTRANCE RAMP



TYPICAL EXIT RAMP



TYPICAL EXIT RAMP

SYMBOLS

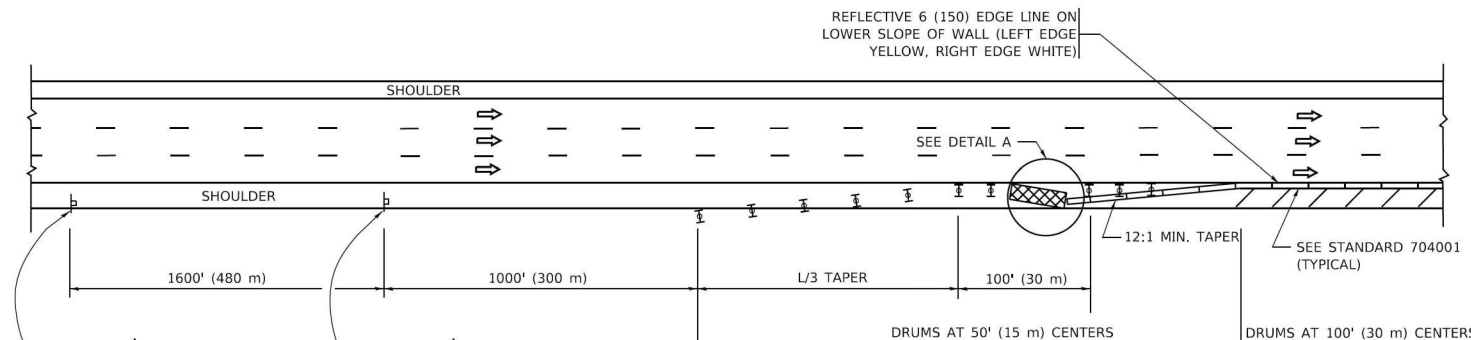
- ACTIVE WORK AREA
- SIGN ON PORTABLE OR PERMANENT SUPPORT
- FLAGGER WITH CONTROL SIGN
- TYPE II BARRICADE OR DRUM
- CONE, DRUM OR BARRICADE
- IMPACT ATTENUATOR OF TYPE AND TEST LEVEL SPECIFIED

GENERAL NOTES:

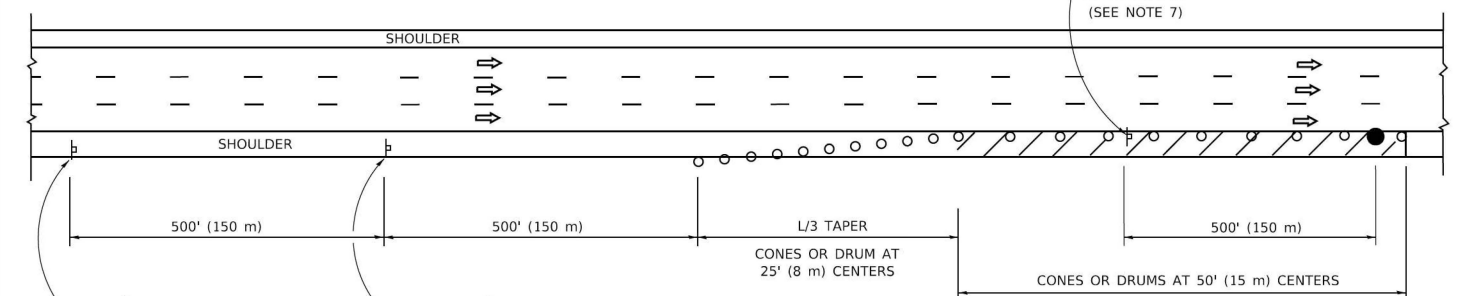
1. THE "L" DISTANCE EQUALS:

SPEED LIMIT	FORMULAS
45 mph (80 km/h)	METRIC ENGLISH
OR GREATER:	$L=0.65(W/S)$ $L=(W/S)$
	W = WIDTH OF OFFSET IN FEET (METERS)
	S = NORMAL POSTED SPEED MPH (KM/H)
2. TYPE II BARRICADES OR DRUMS ARE REQUIRED FOR ALL NIGHTTIME CLOSURES. TYPE II BARRICADES OR DRUMS WITH MONODIRECTIONAL STEADY BURN LIGHTS ARE REQUIRED FOR DELINEATING OBSTACLES, EXCAVATIONS, OR HAZARDS EXCEEDING 100 FT (30m) IN LENGTH AT NIGHT.
3. ALL SIGNS SHALL BE POST MOUNTED IF THE CLOSURE TIME EXCEEDS FOUR DAYS.
4. FLASHING LIGHTS SHALL BE USED DURING THE HOURS OF DARKNESS AND SHALL BE INSTALLED ABOVE THE FIRST TWO SETS OF SIGNS.

SHOULDER CLOSURE DETAILS



PERMANENT SHOULDER CLOSURE



DAYTIME SHOULDER CLOSURE

THIS DETAIL IS USED WHERE:
 1. VEHICLES, EQUIPMENT, WORKERS OR THEIR ACTIVITIES ENCOACH IN AN AREA CLOSER THAN 15' (4.5 m) TO THE EDGE OF PAVEMENT FOR A PERIOD IN EXCESS OF 15 MINUTES.

ARRAY DESIGN PER MANUFACTURER TO BE NCHRP 350/MASH COMPLIANT.

DETAIL "A"
 IMPACT ATTENUATOR, TEMPORARY
 (SEE NOTE 5)

5. THE IMPACT ATTENUATOR. TEMPORARY IS NOT REQUIRED WHEN THE TEMPORARY CONCRETE BARRIER WALL IS PROTECTED BY OR IS TIED INTO THE EXISTING GUARDRAIL. IF OFFSET IS LESS THAN 5 FEET USE NARROW USE TYPE DEVICE TO MEET NCHRP350/MASH.
6. AUTHORIZATION FROM THE DISTRICT'S BUREAU OF TRAFFIC IS REQUIRED FOR ALL FREEWAY CLOSURES.
7. THE FLAGGER AND FLAGGER SIGN ARE REQUIRED AT THE ABOVE WORK SITES WHEN:
 - a. FOUR OR MORE WORK VEHICLES ENTER THE TRAFFIC LANES IN A ONE HOUR PERIOD.
 - b. THE WORK AVTIVITY REQUIRES FREQUENT ENCOACHMENT INTO THE LANE OPEN TO TRAFFIC.
 THE FLAGGER SHALL BE STATIONED APPROXIMATELY 100' (30 m) TO 200' (60 m) IN ADVANCE OF THE WORKERS.
8. 12' MIN. WIDTH TANGENT SECTION
 16' MIN. WIDTH CURVE SECTION.

ALL DIMENSIONS ARE IN INCHES (MILLIMETERS) UNLESS OTHERWISE SHOWN.

MODEL: Default
 FILE NAME: C:\Users\aseiber\OneDrive\Documents\Orion Admin - 2025011 - IDOT Various Phase II (D-91-046-25)\WC #2 - 62X31\CADD\Mod62X31-Border.dgn



USER NAME = aseiber	DESIGNED -	REVISED -
	DRAWN -	REVISED -
	CHECKED -	REVISED -
PLOT DATE = 12/12/2025	DATE -	REVISED -

**STATE OF ILLINOIS
 DEPARTMENT OF TRANSPORTATION**

**TRAFFIC CONTROL DETAILS FOR FREEWAY
 SHOULDER CLOSURES AND PARTIAL RAMP CLOSURES**

SCALE: SHEET OF SHEETS STA. TO STA.

F.A.I. RTE.	SECTION	COUNTY	TOTAL SHEETS	SHEET NO.
57	(0404-1023K) C, BR 24	COOK / WILL	14	14
TC-17		CONTRACT NO. 62X31		
ILLINOIS FED. AID PROJECT				