

STATE OF ILLINOIS  
DEPARTMENT OF TRANSPORTATION

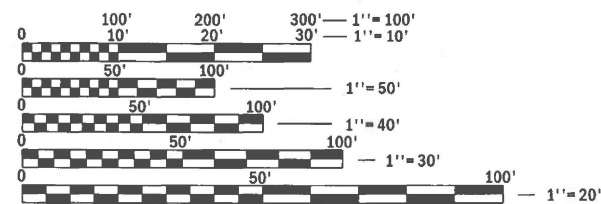
F.A.P. RTE.	SECTION	COUNTY	TOTAL SHEETS	SHEET NO.
334	2025-1085-RS	MCHENRY	27	1
		ILLINOIS	CONTRACT NO. 80B12	

FOR INDEX OF SHEETS, SEE SHEET NO. 2

IMPROVEMENT LOCATED IN  
THE VILLAGE OF RICHMOND

TRAFFIC DATA

ADT: 15,400  
POSTED SPEED: 45 MPH  
DESIGN SPEED: 50 MPH

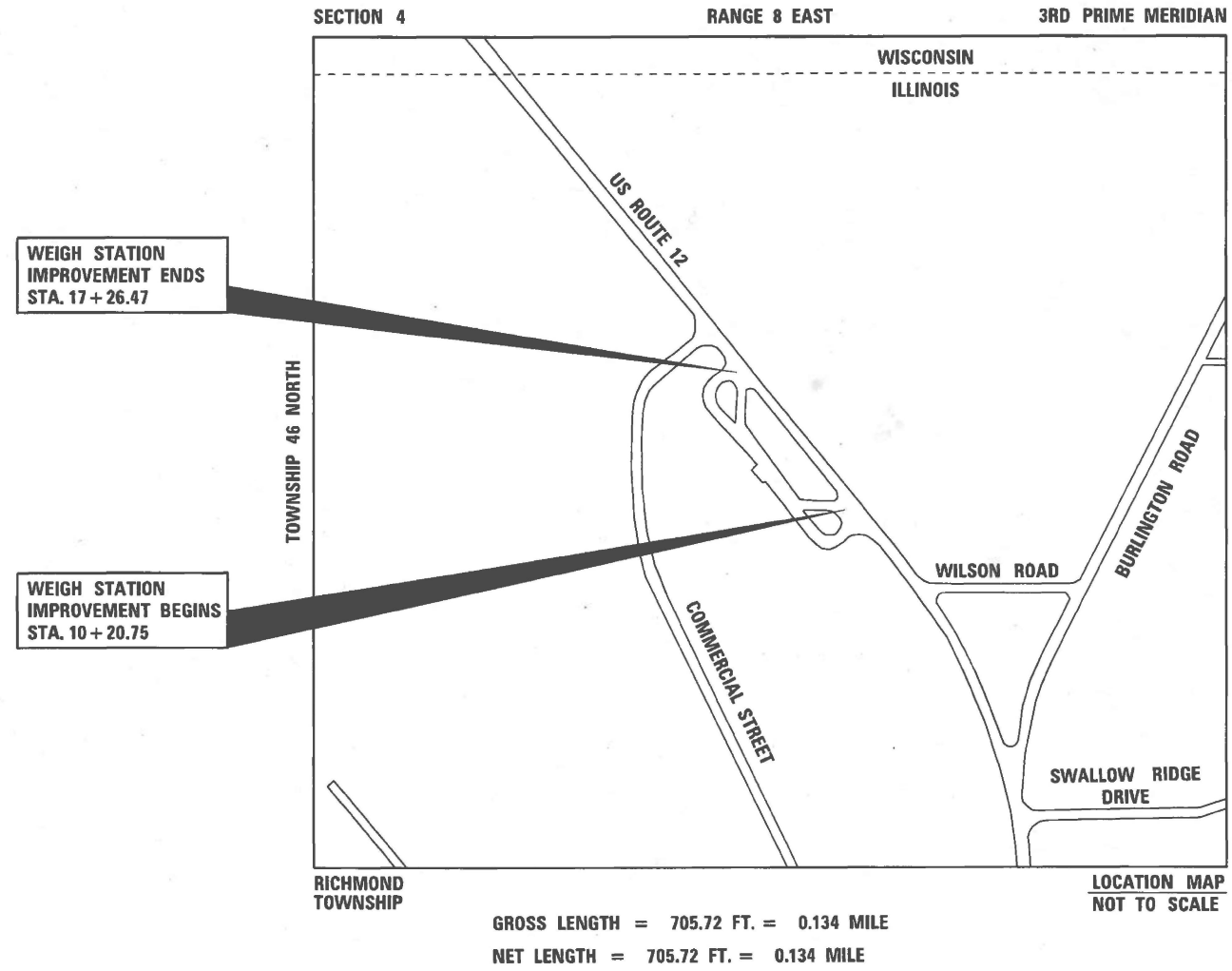


FULL SIZE PLANS HAVE BEEN PREPARED USING STANDARD ENGINEERING SCALES. REDUCED SIZED PLANS WILL NOT CONFORM TO STANDARD SCALES. IN MAKING MEASUREMENTS ON REDUCED PLANS, THE ABOVE SCALES MAY BE USED.

J.U.L.I.E.  
JOINT UTILITY LOCATION INFORMATION FOR EXCAVATION  
1-800-892-0123  
OR 811

PROJECT ENGINEER: RODRIGO LEDEZMA, P.E. (847-705-4580)  
PROJECT MANAGER: J. ALAIN MIDY, P.E. (847-221-3056)  
CONTRACT NO. 80B12

FAP ROUTE 334: US 12  
S OF COMMERCIAL ST (RICHMOND WEIGH STATION)  
SECTION: 2025-1085-RS  
WEIGH STATION PAVEMENT REHABILITATION  
MCHENRY COUNTY  
C-91-245-25



GROSS LENGTH = 705.72 FT. = 0.134 MILE  
NET LENGTH = 705.72 FT. = 0.134 MILE

LOCATION MAP  
NOT TO SCALE



STATE OF ILLINOIS  
DEPARTMENT OF TRANSPORTATION

SUBMITTED Jan 23<sup>rd</sup> 20 26  
Jose Robs IR  
REGIONAL ENGINEER

March 20 20 26  
See Ed etc  
ENGINEER OF DESIGN AND ENVIRONMENT

March 20 20 26  
5  
DIRECTOR OF HIGHWAYS PROJECT IMPLEMENTATION

PRINTED BY THE AUTHORITY  
OF THE STATE OF ILLINOIS

V3 COMPANIES LTD.  
JACOB W. BAUER  
# 062-064761  
Jacob Bauer  
DATE: 01-23-2026  
SIGNATURE AND SEAL APPLY TO  
SHEETS: 1-27  
EXPIRATION DATE: 11-30-2027

**INDEX OF SHEETS**

- 1 COVER SHEET
- 2 INDEX OF SHEETS, GENERAL NOTES, AND HIGHWAY STANDARDS
- 3-5 SUMMARY OF QUANTITIES
- 6 TYPICAL SECTIONS
- 7 EARTHWORK SCHEDULE
- 8 ALIGNMENT AND TIES
- 9 REMOVAL PLAN
- 10 ROADWAY PLAN
- 11 TRAFFIC CONTROL PLAN
- 12 PAVEMENT MARKING AND SIGNAGE PLAN
- 13 DRAINAGE PLAN
- 14-15 EROSION CONTROL PLAN
- 16 LANDSCAPING PLAN
- 17 BD-24 CURB OR CURB AND GUTTER REMOVAL AND REPLACEMENT
- 18 BD-32 BUTT JOINT AND HMA TAPER DETAILS
- 19 TC-10 TRAFFIC CONTROL AND PROTECTION FOR SIDE ROADS, INTERSECTIONS, AND DRIVEWAYS
- 20 TC-13 DISTRICT ONE TYPICAL PAVEMENT MARKINGS
- 21 TC-22 ARTERIAL ROAD INFORMATION SIGN
- 22-27 CROSS SECTIONS

**IDOT HIGHWAY STANDARDS**

- 000001-09 STANDARD SYMBOLS, ABBREVIATIONS AND PATTERNS
- 280001-07 TEMPORARY EROSION CONTROL SYSTEMS
- 442101-09 CLASS B PATCHES
- 482011-03 HMA, SHLD, STRIPS/SHLDS, WITH RESURFACING OR WIDENING AND RESURFACING PROJECTS
- 604036-03 GRATE TYPE 8
- 606001-09 CONCRETE CURB TYPE B AND COMBINATION CONCRETE CURB AND GUTTER
- 701006-05 OFF-RD OPERATIONS, 2L, 2W, 15' (4.5 m) TO 24" (600 mm) FROM PAVEMENT EDGE
- 701301-04 LANE CLOSURE, 2L, 2W, SHORT TIME OPERATIONS
- 701501-06 URBAN LANE CLOSURE, 2L, 2W, UNDIVIDED
- 701901-11 TRAFFIC CONTROL DEVICES
- 704001-08 TEMPORARY CONCRETE BARRIER
- 780001-05 TYPICAL PAVEMENT MARKINGS

**DISTRICT 1 STANDARD DETAILS**

- BD-24 CURB OR CURB AND GUTTER REMOVAL AND REPLACEMENT
- BD-32 BUTT JOINT AND HMA TAPER DETAILS
- TC-10 TRAFFIC CONTROL AND PROTECTION FOR SIDE ROADS, INTERSECTIONS, AND DRIVEWAYS
- TC-13 DISTRICT ONE TYPICAL PAVEMENT MARKINGS
- TC-22 ARTERIAL ROAD INFORMATION SIGN

**GENERAL NOTES**

1. BEFORE STARTING ANY EXCAVATION, THE CONTRACTOR SHALL CONTACT "JULIE", IDOT, AND THE VILLAGE OF RICHMOND FOR FIELD LOCATIONS OF BURIED UTILITIES 48 HOURS IN ADVANCE OF WORK.
2. IT SHALL BE THE CONTRACTOR'S RESPONSIBILITY TO VERIFY ALL DIMENSIONS AND CONDITIONS EXISTING IN THE FIELD PRIOR TO CONSTRUCTION AND ORDERING OF MATERIALS.
3. THE CONTRACTOR WILL NOT BE PERMITTED TO SET UP A YARD OR FIELD OFFICE ON STATE OR VILLAGE PROPERTY WITHOUT PRIOR WRITTEN PERMISSION OF THE DEPARTMENT.
4. WHERE SECTION OR SUBSECTION MONUMENTS ARE ENCOUNTERED, THE ENGINEER SHALL BE NOTIFIED BEFORE SUCH MONUMENTS ARE DISTURBED. THE CONTRACTOR SHALL CAREFULLY PRESERVE ALL PROPERTY MARKERS AND MONUMENTS UNTIL THE OWNER, AN AUTHORIZED SURVEYOR OR AGENT HAS WITNESSED OR OTHERWISE REFERENCED EACH LOCATION.
5. THE CONTRACTOR SHALL CONTACT KALPANA KANNAN-HOSADURGA, THE DISTRICT ONE TRAFFIC CONTROL SUPERVISOR, AT KALPANA.KANNAN-HOSADURGA@ILLINOIS.GOV A MINIMUM OF 72 HOURS IN ADVANCE OF BEGINNING WORK.
6. THE SUBGRADE STABILITY SHALL BE VERIFIED BY PROOF ROLLING WITH A FULLY LOADED TANDEM-AXLE TRUCK OR OTHER APPROPRIATE EQUIPMENT AS APPROVED BY THE ENGINEER.
7. GEOTECHNICAL FABRIC FOR GROUND STABILIZATION AND/OR AGGREGATE SUBGRADE IMPROVEMENT (CU YD) HAVE BEEN PROVIDED FOR USE AT THE LOCATIONS INDICATED FOR SOILS THAT TEND TO BE UNSTABLE AND/OR UNSUITABLE. THE ACTUAL NEED FOR REMOVAL AND REPLACEMENT WITH ABOVE ITEM WILL BE DETERMINED IN THE FIELD AT THE TIME OF CONSTRUCTION BY THE GEOTECHNICAL ENGINEER. ALL POTENTIALLY UNSTABLE SOILS SHOULD BE TESTED WITH A STATIC OR DYNAMIC CONE PENETROMETER AND TREATED IN ACCORDANCE WITH ARTICLE 301.04 OF THE SSRBC AND IDOT SUBGRADE STABILITY MANUAL. IF UNSTABLE AND/OR UNSUITABLE SOILS ARE NOT ENCOUNTERED, THEN THE QUANTITY SHALL BE DEDUCTED AND NO ADDITIONAL COMPENSATION WILL BE DUE TO THE CONTRACTOR.
8. GEOTECHNICAL FABRIC FOR GROUND STABILIZATION SHALL BE WOVEN.
9. ANY AGGREGATE SUBGRADE IMPROVEMENT CONTAMINATED AND/OR DAMAGED BY THE CONTRACTORS VEHICLES EQUIPMENTS IS TO BE REMOVED AND REPLACED AS DIRECTED BY THE ENGINEER AT CONTRACTOR EXPENSE.
10. ALL MILLED SURFACES SHALL BE A UNIFORM CROSS SLOPE PER LANE AND FREE OF RIDGES BETWEEN PASSES, ANY DEVIATIONS SHALL BE CORRECTED AT NO COST TO THE DEPARTMENT.
11. BUTT JOINTS SHALL BE INSTALLED AT THE ENDS OF ALL RESURFACING (WHERE RESURFACING MEETS EXISTING PAVEMENT) ACCORDING TO THE "BUTT JOINT AND HOT-MIX ASPHALT TAPER DETAILS" SHEET INCLUDED IN THE PLANS, UNLESS OTHERWISE SPECIFIED.
12. TEN (10) FOOT TRANSITIONS SHALL BE USED TO MATCH PROPOSED CURB AND GUTTER AND MEDIAN ITEMS OF WORK TO EXISTING CURBS AND GUTTER AND MEDIANS IN THE FIELD, UNLESS OTHERWISE SHOWN.
13. BEFORE BEGINNING ANY WORK, THE CONTRACTORS SHALL RETAIN AND RECORD FOR FUTURE REFERENCE, ALL EXISTING PAVEMENT MARKING LINES (AND RAISED REFLECTIVE PAVEMENT MARKERS) IN ORDER THAT THESE LOCATIONS CAN BE RE-ESTABLISHED FOR STRIPING. EXACT LOCATIONS OF ALL PAVEMENT MARKINGS SHALL BE SHOWN ON THE PLANS OR AS DIRECTED BY THE RESIDENT ENGINEER.
14. LOCATIONS OF COMBINATION CONCRETE CURB AND GUTTER REMOVAL AND REPLACEMENT SHALL BE DETERMINED BY THE ENGINEER.
15. THE CONTRACTOR SHALL COORDINATE CONSTRUCTION ACTIVITIES WITH UTILITY COMPANIES AND THE VILLAGE OF RICHMOND.
16. SAW CUTTING PRIOR TO ANY REMOVAL ITEMS NOTED IN THE PLANS SHALL BE CONSIDERED INCLUDED IN THE COST OF THE ITEMS BEING REMOVED, UNLESS NOTED OTHERWISE. SAW CUTTING FOR CLASS B PATCHES WILL BE MEASURED AND PAID IN ACCORDANCE WITH ARTICLES 442.10 AND 442.11 OF THE SSRBC.
17. THE AGGREGATE GRADATION FOR THE LOWER 9 INCHES OF AGGREGATE SUBGRADE IMPROVEMENT 12" SHALL BE CS 1 OR RR1.
18. IN ADDITION TO THE AREAS SHOWN IN THE PLANS, ADDITIONAL QUANTITY OF CLASS B PATCHES, TYPE IV, 8 INCH, ARE INCLUDED IN THIS CONTRACT TO BE COMPLETED AT THE DIRECTION OF THE ENGINEER.
19. THE WEIGH STATION SHALL BE CLOSED TO TRAFFIC FOR THE DURATION OF CONSTRUCTION AS SHOWN IN THE TRAFFIC CONTROL PLAN, UNLESS OTHERWISE DIRECTED BY THE ENGINEER. IT IS THE CONTRACTOR'S RESPONSIBILITY TO COORDINATE SUCH CLOSURES WITH THE ENGINEER A MINIMUM 7 DAYS IN ADVANCE OF STARTING WORK.

**COMMITMENTS**

NONE

**HOT-MIX ASPHALT REQUIREMENTS**

MIXTURE TYPE	AIR VOIDS @ NDES	QMP DESIGNATION
WEIGH STATION ASPHALT SURFACE COURSE		
POLYMERIZED HOT-MIX ASPHALT SURFACE COURSE, IL-9.5, MIX "E", N70	4% @ 70 GYR	QC/QA
QMP DESIGNATIONS: QUALITY CONTROL/QUALITY ASSURANCE (QC/QA); QUALITY CONTROL FOR PERFORMANCE (QCP); PAY FOR PERFORMANCE (PFP)		

**NOTES**

1. THE UNIT WEIGHT USED TO CALCULATE ALL HMA MIXTURE QUANTITIES IS 112 LBS/SQYD/IN.
2. THE "AC TYPE" FOR POLYMERIZED HMA MIXES SHALL BE "SBS/SBR PG 76-22" AND FOR NON-POLYMERIZED HMA THE "AC TYPE" SHALL BE "PG 64-22" UNLESS MODIFIED BY RECLAIMED MATERIAL SPECIFICATIONS.

MODEL: 80144 Border  
FILE NAME: N:\2025\250509\250509.03\Drawings\Main\Design\180144-cdf-bordenHB.dgn



USER NAME = cwasowicz	DESIGNED -	REVISED -	
	DRAWN -	REVISED -	
	CHECKED -	REVISED -	
PLOT DATE = 01/23/2026	DATE -	REVISED -	

**STATE OF ILLINOIS  
DEPARTMENT OF TRANSPORTATION**

**INDEX OF SHEETS, GENERAL NOTES  
AND HIGHWAY STANDARDS**

SCALE: NONE    SHEET 1 OF 1 SHEETS    STA.    TO STA.

F A P RTE	SECTION	COUNTY	TOTAL SHEETS	SHEET NO.
334	2025-1085-RS	MCHENRY	27	2
CONTRACT NO. 80B12				
ILLINOIS   FED. AID PROJECT				

CONSTRUCTION CODE  
100% STATE  
0005

SPECIALTY ITEM	CODE NO.	ITEM	UNIT	TOTAL QUANTITY
	20200100	EARTH EXCAVATION	CU YD	365
	20201200	REMOVAL AND DISPOSAL OF UNSUITABLE MATERIAL	CU YD	36
	21001000	GEOTECHNICAL FABRIC FOR GROUND STABILIZATION	SQ YD	108
	21101505	TOPSOIL EXCAVATION AND PLACEMENT	CU YD	304
	25000210	SEEDING, CLASS 2A	ACRE	0.37
	25000400	NITROGEN FERTILIZER NUTRIENT	POUND	33
	25000600	POTASSIUM FERTILIZER NUTRIENT	POUND	33
	25100630	EROSION CONTROL BLANKET	SQ YD	3,538
	28000250	TEMPORARY EROSION CONTROL SEEDING	POUND	100
	28000400	PERIMETER EROSION BARRIER	FOOT	831
	28000510	INLET FILTERS	EACH	3
	28100105	STONE RIPRAP, CLASS A3	SQ YD	106
	30300001	AGGREGATE SUBGRADE IMPROVEMENT	CU YD	36
	30300112	AGGREGATE SUBGRADE IMPROVEMENT 12"	SQ YD	745
	35300300	PORTLAND CEMENT CONCRETE BASE COURSE 8"	SQ YD	711
	35400300	PORTLAND CEMENT CONCRETE BASE COURSE WIDENING 8"	SQ YD	34
	40600290	BITUMINOUS MATERIALS (TACK COAT)	POUND	1,591
	40600370	LONGITUDINAL JOINT SEALANT	FOOT	613
	40600400	MIXTURE FOR CRACKS, JOINTS, AND FLANGEWAYS	TON	10

\* SPECIALTY ITEM

MODEL: 80144 Border  
FILE NAME: N:\2025\250509\250509.03\Drawings\Main\Design\1\80144-ctf-borderNB.dgn



USER NAME = cwasowicz	DESIGNED -	REVISED -
	DRAWN -	REVISED -
	CHECKED -	REVISED -
PLOT DATE = 01/23/2026	DATE -	REVISED -

**STATE OF ILLINOIS  
DEPARTMENT OF TRANSPORTATION**

**SUMMARY OF QUANTITIES**

SCALE: NONE SHEET 1 OF 3 SHEETS STA. TO STA.

F.A.P. RTE.	SECTION	COUNTY	TOTAL SHEETS	SHEET NO.
334	2025-1085-RS	MCHENRY	27	3
ILLINOIS FED. AID PROJECT			CONTRACT NO. 80B12	

CONSTRUCTION CODE  
100% STATE  
0005

SPECIALTY ITEM	CODE NO.	ITEM	UNIT	TOTAL QUANTITY
	40600982	HOT-MIX ASPHALT SURFACE REMOVAL - BUTT JOINT	SQ YD	116
	40604172	POLYMERIZED HOT-MIX ASPHALT SURFACE COURSE, IL-9.5, MIX "E", N70	TON	450
	42000060	WELDED WIRE REINFORCEMENT	SQ YD	628
	44000100	PAVEMENT REMOVAL	SQ YD	160
	44000157	HOT-MIX ASPHALT SURFACE REMOVAL, 2"	SQ YD	3,200
	44200944	CLASS B PATCHES, TYPE IV, 8 INCH	SQ YD	628
	44201298	DOWEL BARS 1 1/4"	EACH	300
	44213200	SAW CUTS	FOOT	610
	44213204	TIE BARS 3/4"	EACH	61
	48101600	AGGREGATE SHOULDERS, TYPE B 8"	SQ YD	156
	48102100	AGGREGATE WEDGE SHOULDER, TYPE B	TON	17
	60200805	CATCH BASINS, TYPE A, 4'-DIAMETER, TYPE 8 GRATE	EACH	1
	60253800	CATCH BASINS TO BE RECONSTRUCTED WITH NEW TYPE 8 GRATE	EACH	2
	60255410	CATCH BASINS TO BE CLEANED	EACH	3
	60500050	REMOVING CATCH BASINS	EACH	1
*	66900200	NON-SPECIAL WASTE DISPOSAL	CU YD	30
*	66900530	SOIL DISPOSAL ANALYSIS	EACH	1
*	66901001	REGULATED SUBSTANCES PRE-CONSTRUCTION PLAN	L SUM	1
*	66901003	REGULATED SUBSTANCES FINAL CONSTRUCTION REPORT	L SUM	1

\* SPECIALTY ITEM

MODEL: 80144 Border  
FILE NAME: N:\2025\250509\250509.03\Drawings\Main\Design\1\80144-ctf-borderNB.dgn



USER NAME = cwasowicz	DESIGNED -	REVISED -
	DRAWN -	REVISED -
	CHECKED -	REVISED -
PLOT DATE = 01/23/2026	DATE -	REVISED -

**STATE OF ILLINOIS  
DEPARTMENT OF TRANSPORTATION**

**SUMMARY OF QUANTITIES**

SCALE: NONE SHEET 2 OF 3 SHEETS STA. TO STA.

F.A.P. RTE.	SECTION	COUNTY	TOTAL SHEETS	SHEET NO.
334	2025-1085-RS	MCHENRY	27	4
CONTRACT NO. 80B12				
ILLINOIS FED. AID PROJECT				

CONSTRUCTION CODE  
100% STATE  
0005

SPECIALTY ITEM	CODE NO.	ITEM	UNIT	TOTAL QUANTITY
*	66901006	REGULATED SUBSTANCES MONITORING	CAL DA	2
	67100100	MOBILIZATION	L SUM	1
*	72400500	RELOCATE SIGN PANEL ASSEMBLY - TYPE A	EACH	1
*	78000100	THERMOPLASTIC PAVEMENT MARKING - LETTERS AND SYMBOLS	SQ FT	92
*	78000400	THERMOPLASTIC PAVEMENT MARKING - LINE 6"	FOOT	1,840
*	78000600	THERMOPLASTIC PAVEMENT MARKING - LINE 12"	FOOT	476
*	78000650	THERMOPLASTIC PAVEMENT MARKING - LINE 24"	FOOT	116
*	78009006	MODIFIED URETHANE PAVEMENT MARKING - LINE 6"	FOOT	332
*	78009008	MODIFIED URETHANE PAVEMENT MARKING - LINE 8"	FOOT	490
*	78009024	MODIFIED URETHANE PAVEMENT MARKING - LINE 24"	FOOT	18
	X4400503	COMBINATION CURB AND GUTTER REMOVAL AND REPLACEMENT GREATER THAN 10 FEET	FOOT	188
	X5537800	STORM SEWERS TO BE CLEANED 12"	FOOT	268
	X6700407	ENGINEER'S FIELD OFFICE, TYPE A (D1)	CAL MO	4
	X7010216	TRAFFIC CONTROL AND PROTECTION (SPECIAL)	L SUM	1
	X7040652	REMOVE TEMPORARY CONCRETE BARRIER, STATE OWNED	FOOT	122
	X7200061	TEMPORARY INFORMATION SIGNING	SQ FT	51.4
	Z0013798	CONSTRUCTION LAYOUT	L SUM	1
*	Z0036200	PAINT CURB	FOOT	395

\* SPECIALTY ITEM

MODEL: 80144 Border  
FILE NAME: N:\2025\250509\250509.03\Drawings\Main\Design\1\80144-ctf-borderNB.dgn



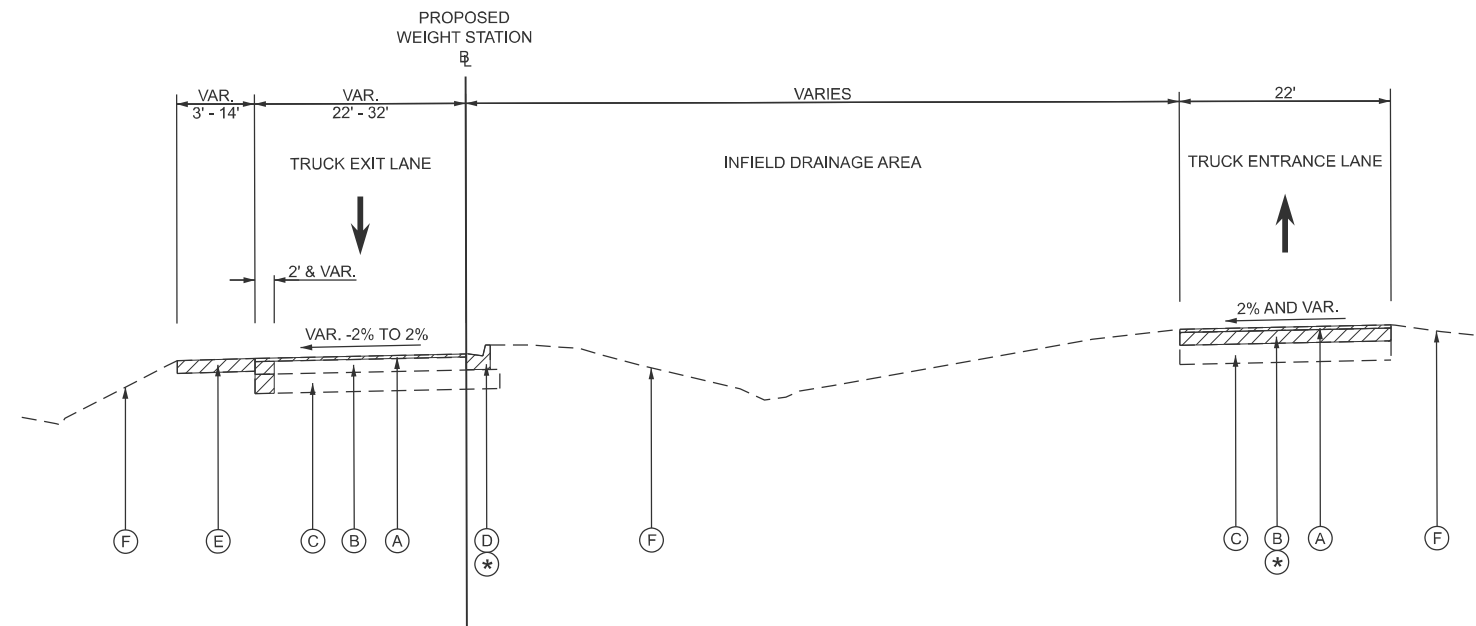
USER NAME = cwasowicz	DESIGNED -	REVISED -
	DRAWN -	REVISED -
	CHECKED -	REVISED -
PLOT DATE = 01/23/2026	DATE -	REVISED -

**STATE OF ILLINOIS  
DEPARTMENT OF TRANSPORTATION**

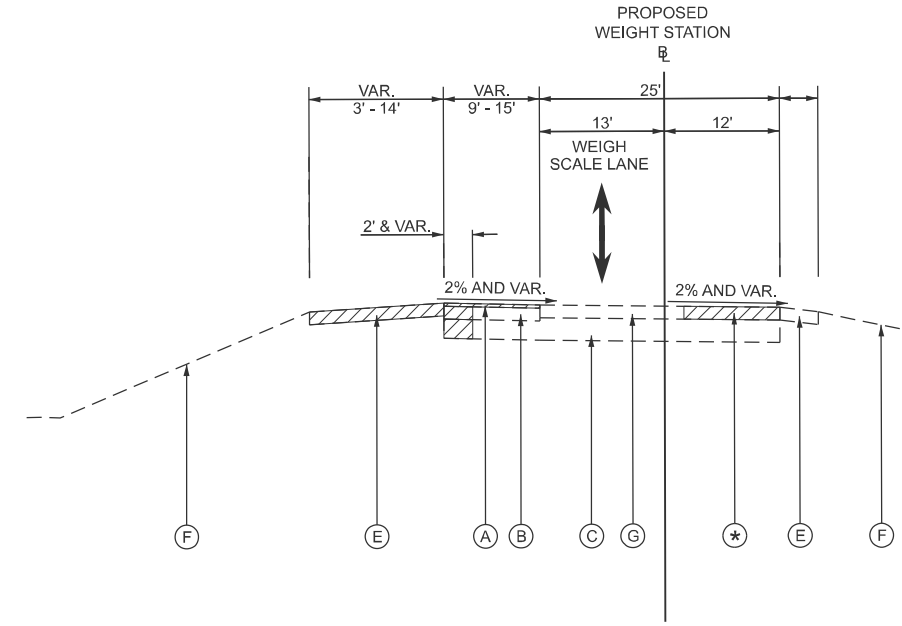
**SUMMARY OF QUANTITIES**

SCALE: NONE SHEET 3 OF 3 SHEETS STA. TO STA.

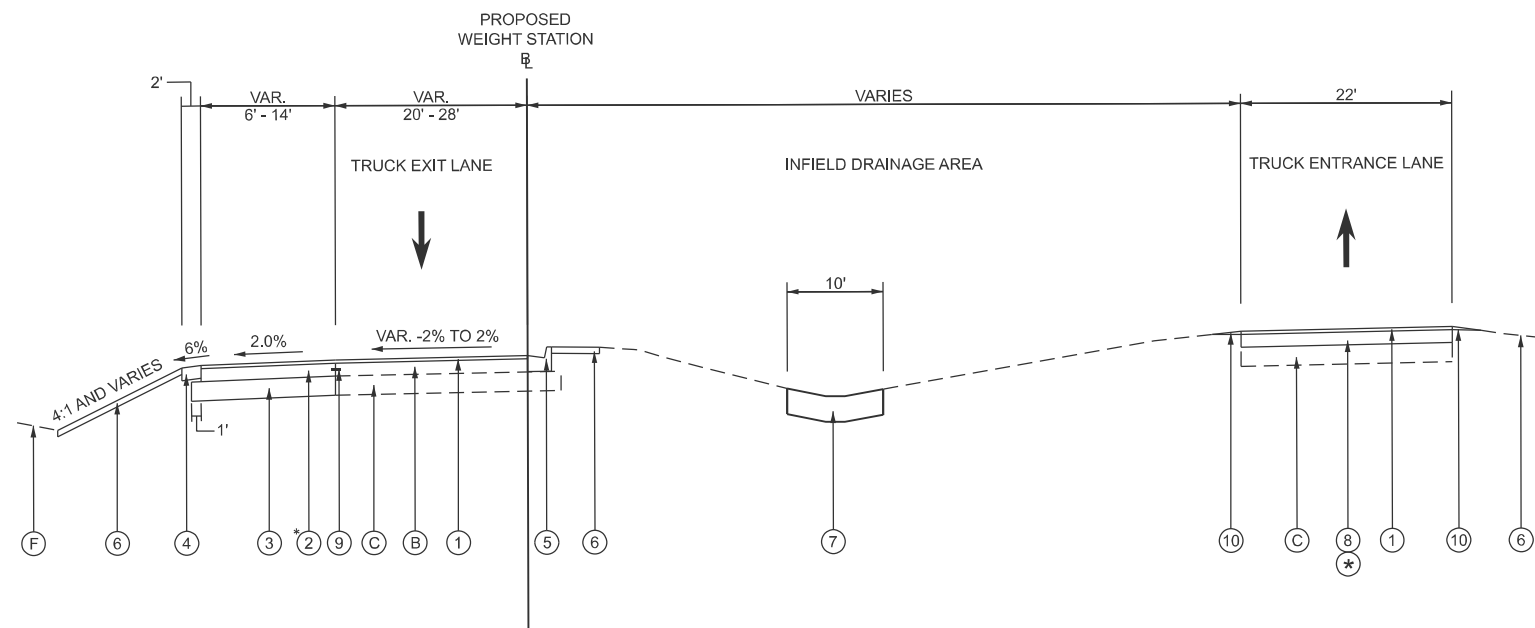
F.A.P. RTE.	SECTION	COUNTY	TOTAL SHEETS	SHEET NO.
334	2025-1085-RS	MCHENRY	27	5
CONTRACT NO. 80B12				
ILLINOIS FED. AID PROJECT				



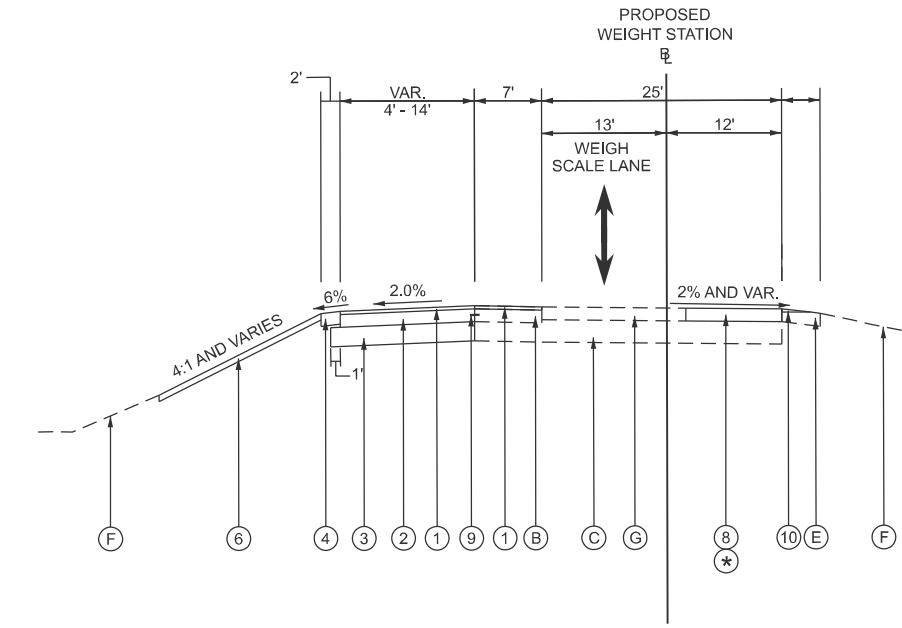
**EXISTING TYPICAL SECTION  
RICHMOND WEIGH STATION**  
STA 10+20.75 TO STA 13+09.54,  
STA 14+43.22 TO STA 17+26.47



**EXISTING TYPICAL SECTION  
RICHMOND WEIGH STATION**  
STA 13+09.54 TO STA 14+43.22



**PROPOSED TYPICAL SECTION  
RICHMOND WEIGH STATION**  
STA 10+20.75 TO STA 13+09.54,  
STA 14+43.22 TO STA 17+26.47



**PROPOSED TYPICAL SECTION  
RICHMOND WEIGH STATION**  
STA 13+09.54 TO STA 14+43.22

\* PCC BASE COURSE WIDENING ITEMS SHALL BE USED WHEN WIDTH IS LESS THAN 6' (SEE PLANS FOR LOCATIONS)

(\*) SEE PLANS FOR LOCATIONS

**EXISTING LEGEND**

- (A) EXISTING HMA SURFACE COURSE, 2"
- (B) EXISTING PCC BASE COURSE, 8"
- (C) EXISTING AGGREGATE SUBGRADE
- (D) EXISTING COMBINATION CONCRETE CURB AND GUTTER, TYPE B-6.24
- (E) EXISTING AGGREGATE SHOULDERS
- (F) EXISTING GROUND
- (G) EXISTING PCC PAVEMENT
- (Hatched Box) ITEM TO BE REMOVED

**PROPOSED LEGEND**

- (1) POLYMERIZED HMA SURFACE COURSE, MIX "E", N70 (IL-9.5 mm), 2"
- (2) PORTLAND CEMENT CONCRETE BASE COURSE, 8"
- (3) AGGREGATE SUBGRADE IMPROVEMENT, 12"
- (4) AGGREGATE SHOULDERS, TYPE B, 8"
- (5) COMBINATION CONCRETE CURB AND GUTTER, TYPE B-6.24
- (6) TOPSOIL EXCAVATION AND PLACEMENT
- (7) STONE RIPRAP, CLASS A3
- (8) CLASS B PATCHES, TYPE IV, 8 INCH
- (9) TIE BARS 3/4"
- (10) AGGREGATE WEDGE SHOULDER

**NOTES:**

1. LONGITUDINAL JOINT SEALANT SHALL BE PLACED UNDER HMA SURFACE MIX.
2. THIS CONTRACT WILL REQUIRE MILLING BEFORE PATCHING.

MODEL: 80144 Border  
FILE NAME: N:\2025\250509\250509\03\Drawings\Main\Design\180144-cdf-borderNB.dgn



USER NAME = cwasowicz	DESIGNED -	REVISED -
	DRAWN -	REVISED -
	CHECKED -	REVISED -
PLOT DATE = 01/23/2026	DATE -	REVISED -

**STATE OF ILLINOIS  
DEPARTMENT OF TRANSPORTATION**

**TYPICAL SECTIONS**

SCALE: 1"=10' SHEET 1 OF 1 SHEETS STA. TO STA.

F.A.P. RTE.	SECTION	COUNTY	TOTAL SHEETS	SHEET NO.
334	2025-1085-RS	MCHENRY	27	6
CONTRACT NO. 80B12				
ILLINOIS FED. AID PROJECT				

EARTHWORK								
LOCATION	EARTH EXCAVATION (CUT)	EARTH EXCAVATION ADJUSTED FOR SHRINKAGE (15%)	EMBANKMENT (FILL)	EARTHWORK BALANCE WASTE (+) SHORTAGE (-)	TOPSOIL EXCAVATION (4" DEPTH)	TOPSOIL EXCAVATION ADJUSTED FOR SHRINKAGE (15%)	TOPSOIL PLACEMENT	TOPSOIL BALANCE WASTE (+) SHORTAGE (-)
	1	2	3	4	5	6	7	8
STATION	CUBIC YARD	CUBIC YARD	CUBIC YARD	CUBIC YARD	CUBIC YARD	CUBIC YARD	CUBIC YARD	CUBIC YARD
<b>RICHMOND WEIGH STATION</b>								
10+50.00	0.0	0.0	0.0	0.0	0.0	0.0	0.0	0.0
11+00.00	4.7	4.0	0.0	4.0	14.5	12.3	1.6	10.7
11+50.00	24.7	21.0	5.0	16.0	17.3	14.7	5.7	9.0
12+00.00	39.3	33.4	6.7	26.7	20.8	17.7	8.4	9.3
12+50.00	37.8	32.1	1.9	30.3	20.8	17.7	4.9	12.8
13+00.00	36.4	30.9	1.5	29.4	20.9	17.8	3.5	14.3
13+50.00	36.7	31.2	1.7	29.5	19.5	16.6	4.4	12.2
14+00.00	25.2	21.4	0.7	20.7	19.3	16.4	1.9	14.5
14+50.00	21.6	18.3	4.1	14.3	20.5	17.4	2.9	14.5
15+00.00	33.9	28.8	5.3	23.5	20.6	17.5	3.9	13.6
15+50.00	38.4	32.7	1.9	30.8	21.3	18.1	2.3	15.8
16+00.00	39.3	33.4	4.3	29.1	33.6	28.6	3.5	25.1
16+50.00	23.5	20.0	4.0	16.0	44.8	38.1	4.5	33.6
17+00.00	4.0	3.4	0.0	3.4	30.2	25.7	1.8	23.9
<b>TOTAL (RICHMOND WEIGH STATION)</b>	<b>365.4</b>	<b>310.6</b>	<b>36.9</b>	<b>273.7</b>	<b>304.1</b>	<b>258.5</b>	<b>49.3</b>	<b>209.2</b>

EARTHWORK QUANTITIES		
PAY ITEM	UNIT	QTY
EARTH EXCAVATION (COLUMN 1)	CU YD	365
TOPSOIL EXCAVATION AND PLACEMENT (COLUMN 5)	CU YD	304

MODEL: 80144.Border  
FILE NAME: N:\2025\250509\250509.03\Drawings\Misc\Design\180144-ctrl-borderNB.dgn



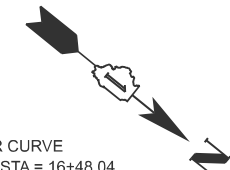
USER NAME = cwasowicz	DESIGNED -	REVISED -
	DRAWN -	REVISED -
	CHECKED -	REVISED -
PLOT DATE = 01/23/2026	DATE -	REVISED -

STATE OF ILLINOIS  
DEPARTMENT OF TRANSPORTATION

EARTHWORK SCHEDULE

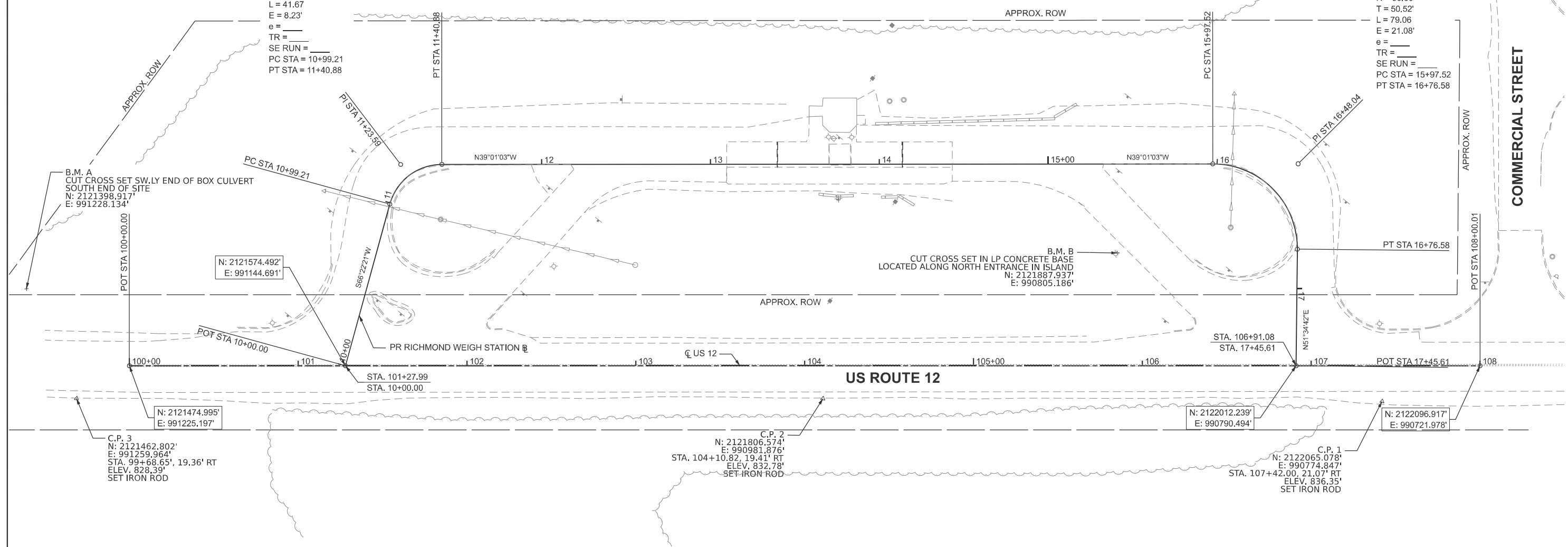
SCALE: NONE SHEET 1 OF 1 SHEETS STA. TO STA.

F.A.P RTE.	SECTION	COUNTY	TOTAL SHEETS	SHEET NO.
334	2025-1085-RS	MCHENRY	27	7
CONTRACT NO. 80B12				
ILLINOIS FED. AID PROJECT				



PR CURVE  
 PI STA = 11+23.59  
 $\Delta = 74^{\circ}36'37''$  (RT)  
 $D = 179^{\circ}02'58''$   
 $R = 32.00'$   
 $T = 24.38'$   
 $L = 41.67'$   
 $E = 8.23'$   
 $e =$   
 $TR =$   
 $SE\ RUN =$   
 $PC\ STA = 10+99.21$   
 $PT\ STA = 11+40.88$

PR CURVE  
 PI STA = 16+48.04  
 $\Delta = 90^{\circ}35'44''$  (RT)  
 $D = 114^{\circ}35'30''$   
 $R = 50.00'$   
 $T = 50.52'$   
 $L = 79.06'$   
 $E = 21.08'$   
 $e =$   
 $TR =$   
 $SE\ RUN =$   
 $PC\ STA = 15+97.52$   
 $PT\ STA = 16+76.58$



B.M. A  
 CUT CROSS SET SW. LY END OF BOX CULVERT  
 SOUTH END OF SITE  
 $N: 2121398.917'$   
 $E: 991228.134'$

$N: 2121574.492'$   
 $E: 991144.691'$

B.M. B  
 CUT CROSS SET IN LP CONCRETE BASE  
 LOCATED ALONG NORTH ENTRANCE IN ISLAND  
 $N: 2121887.937'$   
 $E: 990805.186'$

$N: 2121474.995'$   
 $E: 991225.197'$

C.P. 3  
 $N: 2121462.802'$   
 $E: 991259.964'$   
 $STA. 99+68.65', 19.36'$  RT  
 $ELEV. 828.39'$   
 SET IRON ROD

C.P. 2  
 $N: 2121806.574'$   
 $E: 990981.876'$   
 $STA. 104+10.82, 19.41'$  RT  
 $ELEV. 832.78'$   
 SET IRON ROD

$N: 2122012.239'$   
 $E: 990790.494'$

C.P. 1  
 $N: 2122065.078'$   
 $E: 990774.847'$   
 $STA. 107+42.00, 21.07'$  RT  
 $ELEV. 836.35'$   
 SET IRON ROD

$N: 2122096.917'$   
 $E: 990721.978'$

NOTE:  
 ELEVATIONS SHOWN REFER TO NAVD88.  
 COORDINATES SHOWN HEREON ARE ILLINOIS STATE PLANE, EAST ZONE, NAD83(HARN) GRID.



MODEL: 80144 Border  
 FILE NAME: N:\2025\250509\250509.03\Drawings\Main\Design\180144-ctf-borderNB.dgn



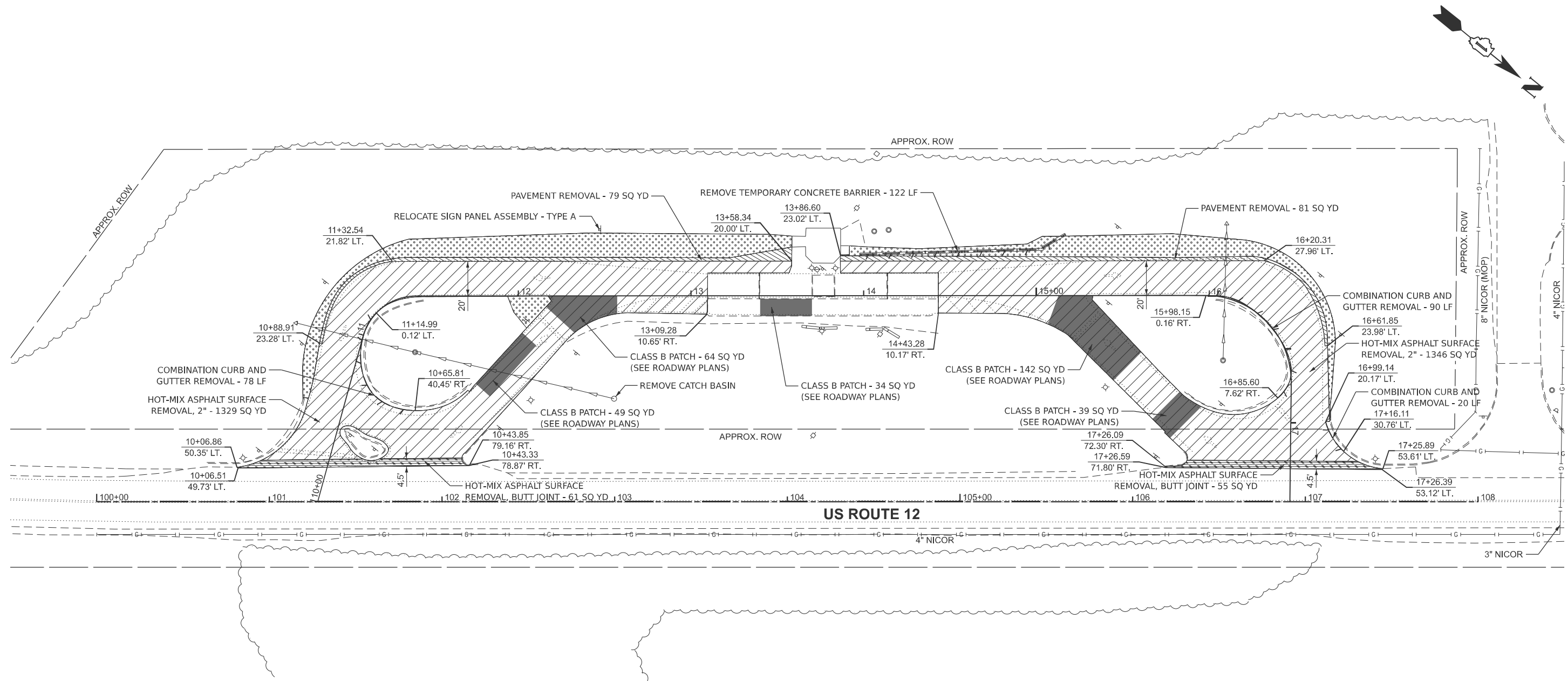
USER NAME = cwasowicz	DESIGNED -	REVISED -
	DRAWN -	REVISED -
	CHECKED -	REVISED -
PLOT DATE = 01/23/2026	DATE -	REVISED -

**STATE OF ILLINOIS  
 DEPARTMENT OF TRANSPORTATION**

**RICHMOND WEIGH STATION  
 ALIGNMENT AND TIES**

SCALE: 1"=30'    SHEET 1 OF 1 SHEETS    STA. 99+50.00 TO STA. 108+50.00

F.A.P. RTE.	SECTION	COUNTY	TOTAL SHEETS	SHEET NO.
334	2025-1085-RS	MCHENRY	27	8
CONTRACT NO. 80B12			ILLINOIS FED. AID PROJECT	



REMOVAL LEGEND	
	PAVEMENT REMOVAL
	HOT-MIX ASPHALT SURFACE REMOVAL - BUTT JOINT
	CLASS B PATCH
	AGGREGATE SHOULDER REMOVAL (INCLUDED IN EARTH EXCAVATION)
	HOT-MIX ASPHALT SURFACE REMOVAL, 2"
	LINEAR ITEM REMOVAL

NOTE:  
EXISTING HMA SURFACE SHALL BE MILLED PRIOR TO CLASS B PATCHING AND PAVEMENT REMOVAL.



MODEL: 80144 Border  
FILE NAME: N:\2025\250509\Drawings\Main\Design\180144-ctf-borderNB.dgn



USER NAME = cwasowicz	DESIGNED -	REVISED -
	DRAWN -	REVISED -
	CHECKED -	REVISED -
PLOT DATE = 01/23/2026	DATE -	REVISED -

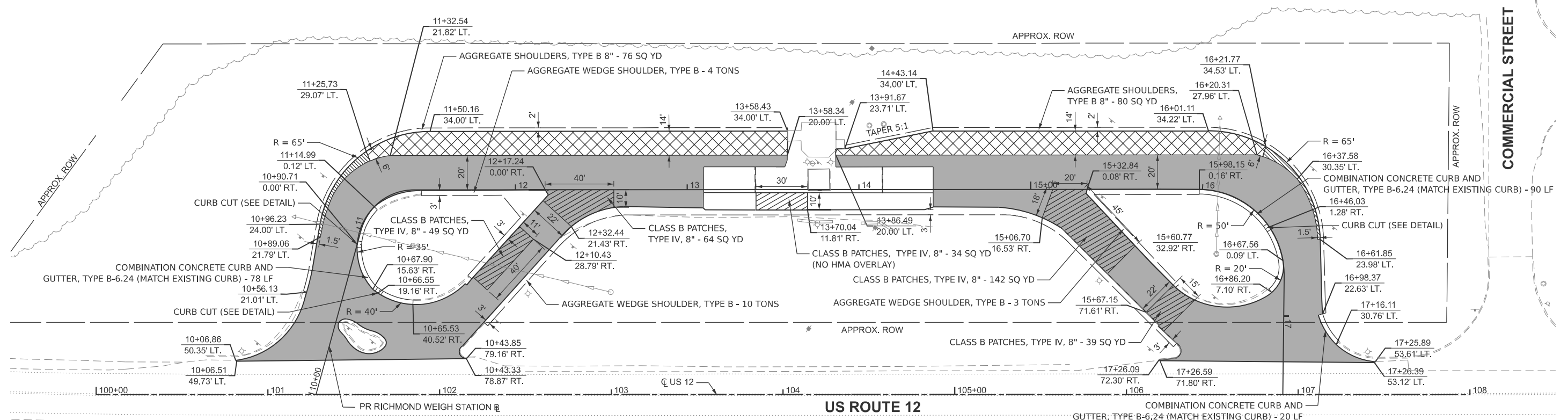
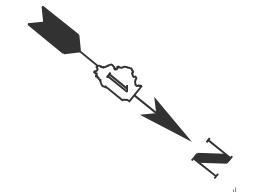
**STATE OF ILLINOIS  
DEPARTMENT OF TRANSPORTATION**

**RICHMOND WEIGH STATION  
REMOVAL PLAN**

SCALE: 1"=30' SHEET 1 OF 1 SHEETS STA. 99+50.00 TO STA. 108+50.00

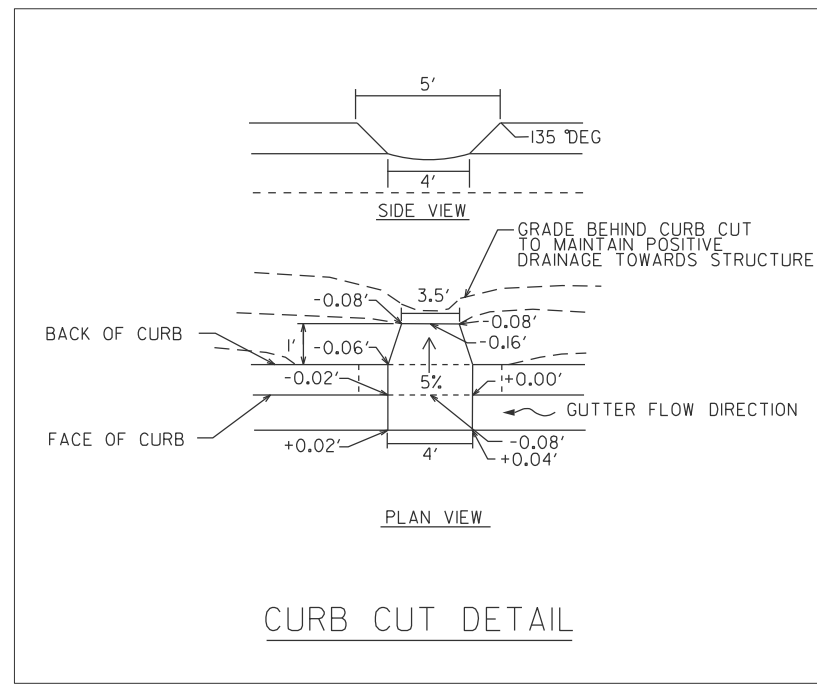
F.A.P. RTE.	SECTION	COUNTY	TOTAL SHEETS	SHEET NO.
334	2025-1085-RS	MCHENRY	27	9
			CONTRACT NO. 80B12	

ILLINOIS FED. AID PROJECT



PAVING LEGEND	
	POLY. HMA SURFACE COURSE, MIX "E", N70 (IL-9.5 mm), 2"
	POLY. HMA SURFACE COURSE, MIX "E", N70 (IL-9.5 mm), 2" PORTLAND CEMENT CONCRETE BASE COURSE, 8" AGGREGATE SUBGRADE IMPROVEMENT, 12"
	POLY. HMA SURFACE COURSE, MIX "E", N70 (IL-9.5 mm), 2" PORTLAND CEMENT CONCRETE BASE COURSE WIDENING, 8" AGGREGATE SUBGRADE IMPROVEMENT, 12"
	CLASS B PATCHES, TYPE IV, 8"

NOTE:  
 1. LONGITUDINAL JOINT SEALANT SHALL BE PLACED UNDER HMA SURFACE MIX.  
 2. SEE HMA MIX TABLE FOR MATERIAL SPECS



MODEL: 80144 Border  
 FILE NAME: N:\2025\250509\250509.03\Drawings\Main\Design\180144-cdf-borderNB.dgn



USER NAME = cwasowicz	DESIGNED -	REVISED -
	DRAWN -	REVISED -
	CHECKED -	REVISED -
PLOT DATE = 01/23/2026	DATE -	REVISED -

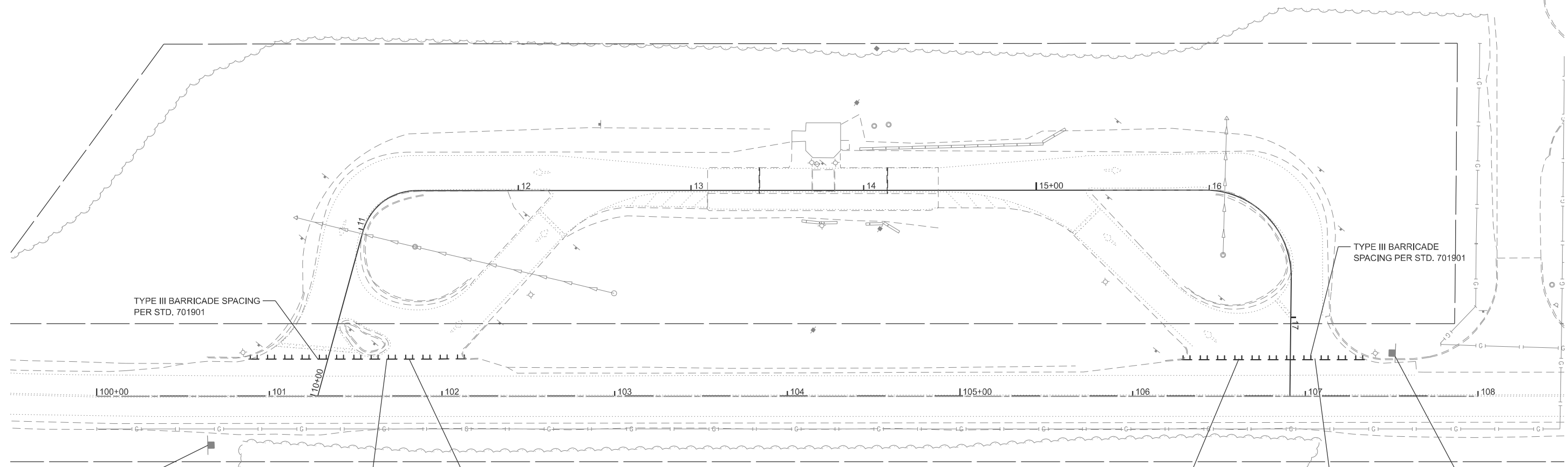
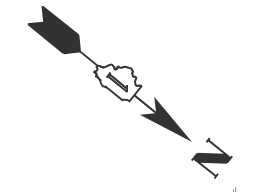
STATE OF ILLINOIS  
 DEPARTMENT OF TRANSPORTATION

RICHMOND WEIGH STATION  
 ROADWAY PLAN

SCALE: 1"=30' SHEET 1 OF 1 SHEETS STA. 99+50.00 TO STA. 108+50.00

F.A.P. RTE.	SECTION	COUNTY	TOTAL SHEETS	SHEET NO.
334	2025-1085-RS	MCHENRY	27	10
			CONTRACT NO. 80B12	

ILLINOIS FED. AID PROJECT



EXISTING SIGN TO BE COVERED



SPECIAL 48"X48" 8" BLACK LETTERS ON WHITE BACKGROUND



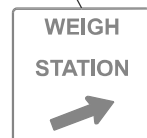
R5-1-48



R5-1-48



SPECIAL 48"X48" 8" BLACK LETTERS ON WHITE BACKGROUND



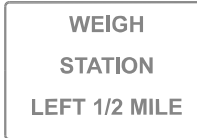
EXISTING SIGN TO BE COVERED

**LEGEND**  
 TYPE III BARRICADE WITH AMBER FLASHING LIGHTS

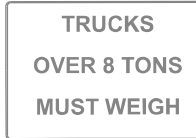


ENSURE DMS READS "CLOSED"

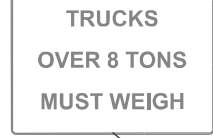
EXISTING SIGN TO BE COVERED



EXISTING SIGN TO BE COVERED



EXISTING SIGN TO BE COVERED



ENSURE DMS READS "CLOSED"

IL 173

WISCONSIN

**WB US 12 DIRECTION**

**EB US 12 DIRECTION**



MODEL: 80144 Border  
 FILE NAME: N:\2025\250509\250509.03\Drawings\Main\Design\180144-ctrl-borderNB.dgn



V3 Companies  
 7325 Janes Avenue  
 Woodridge, IL 60517  
 630 724 9200 phone  
 www.v3co.com

USER NAME = cwasowicz	DESIGNED -	REVISED -
	DRAWN -	REVISED -
	CHECKED -	REVISED -
PLOT DATE = 01/23/2026	DATE -	REVISED -

**STATE OF ILLINOIS  
 DEPARTMENT OF TRANSPORTATION**

**RICHMOND WEIGH STATION  
 TRAFFIC CONTROL PLAN**

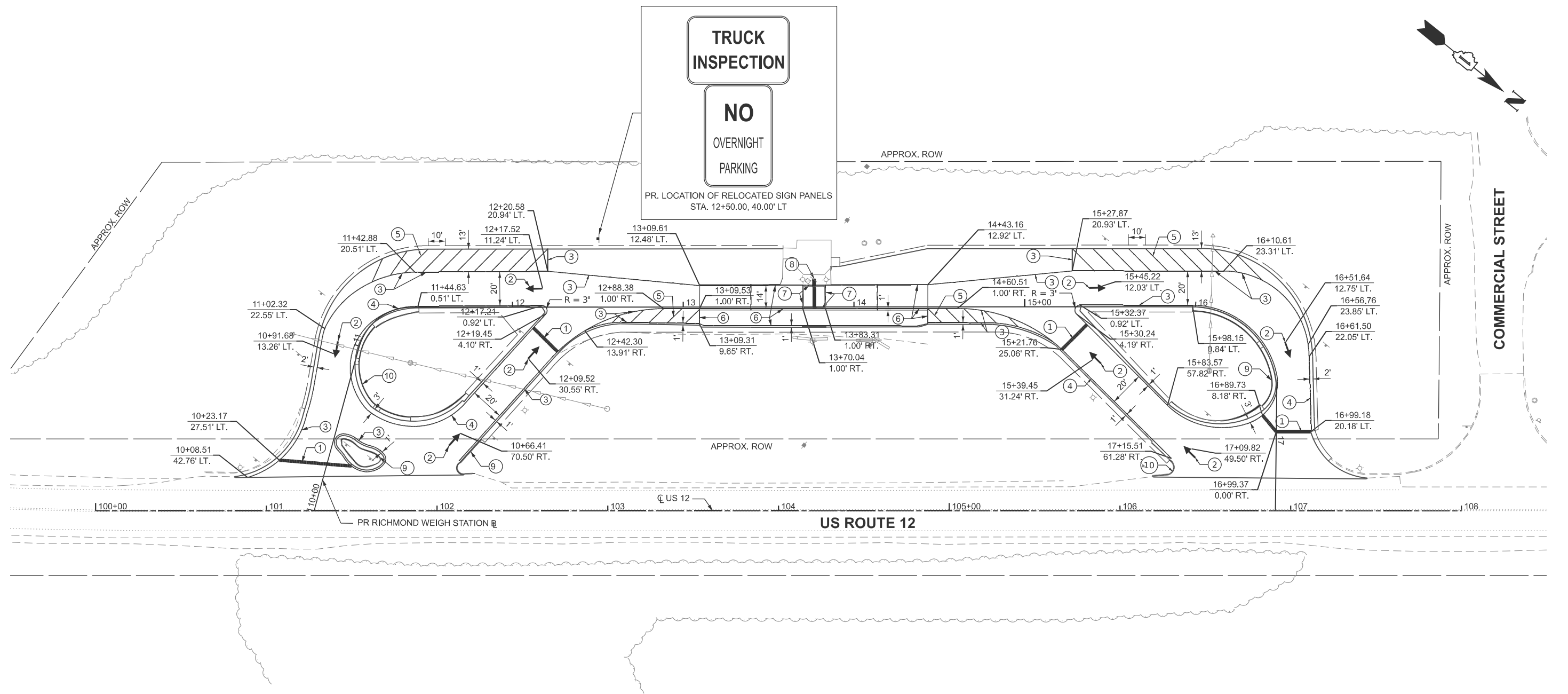
SCALE: 1"=30' SHEET 1 OF 1 SHEETS STA. 0+00.00 TO STA. 9+00.00

F.A.P. RTE.	SECTION	COUNTY	TOTAL SHEETS	SHEET NO.
334	2025-1085-RS	MCHENRY	27	11
CONTRACT NO. 80B12			ILLINOIS FED. AID PROJECT	

TRUCK  
INSPECTION

NO  
OVERNIGHT  
PARKING

PR. LOCATION OF RELOCATED SIGN PANELS  
STA. 12+50.00, 40.00' LT



**PAVEMENT MARKING LEGEND**

- |  |  |
|--|--|
| ① THERMOPLASTIC PAVEMENT MARKING LINE - 24" WHITE STOP BAR (TYP)           | ⑥ MODIFIED URETHANE PAVEMENT MARKING LINE - 6" SOLID WHITE (TYP)     |
| ② THERMOPLASTIC PAVEMENT MARKING LETTERS AND SYMBOLS SOLID WHITE (TYP)     | ⑦ MODIFIED URETHANE PAVEMENT MARKING LINE - 8" SOLID YELLOW (TYP)    |
| ③ THERMOPLASTIC PAVEMENT MARKING LINE - 6" SOLID WHITE (TYP)               | ⑧ MODIFIED URETHANE PAVEMENT MARKING LINE - 24" WHITE STOP BAR (TYP) |
| ④ THERMOPLASTIC PAVEMENT MARKING LINE - 6" SOLID YELLOW (TYP)              | ⑨ PAINTED CURB, SOLID WHITE (TYP)                                    |
| ⑤ THERMOPLASTIC PAVEMENT MARKING LINE - 12" SOLID WHITE (TYP) AT 45° ANGLE | ⑩ PAINTED CURB, SOLID YELLOW (TYP)                                   |



MODEL: 80144 Border  
FILE NAME: N:\2025\250509\250509.03\Drawings\Main\Design\180144-cdf-borderNB.dgn



USER NAME	= cwasowicz
DESIGNED	-
DRAWN	-
CHECKED	-
DATE	= 01/23/2026

DESIGNED	-
DRAWN	-
CHECKED	-
DATE	-

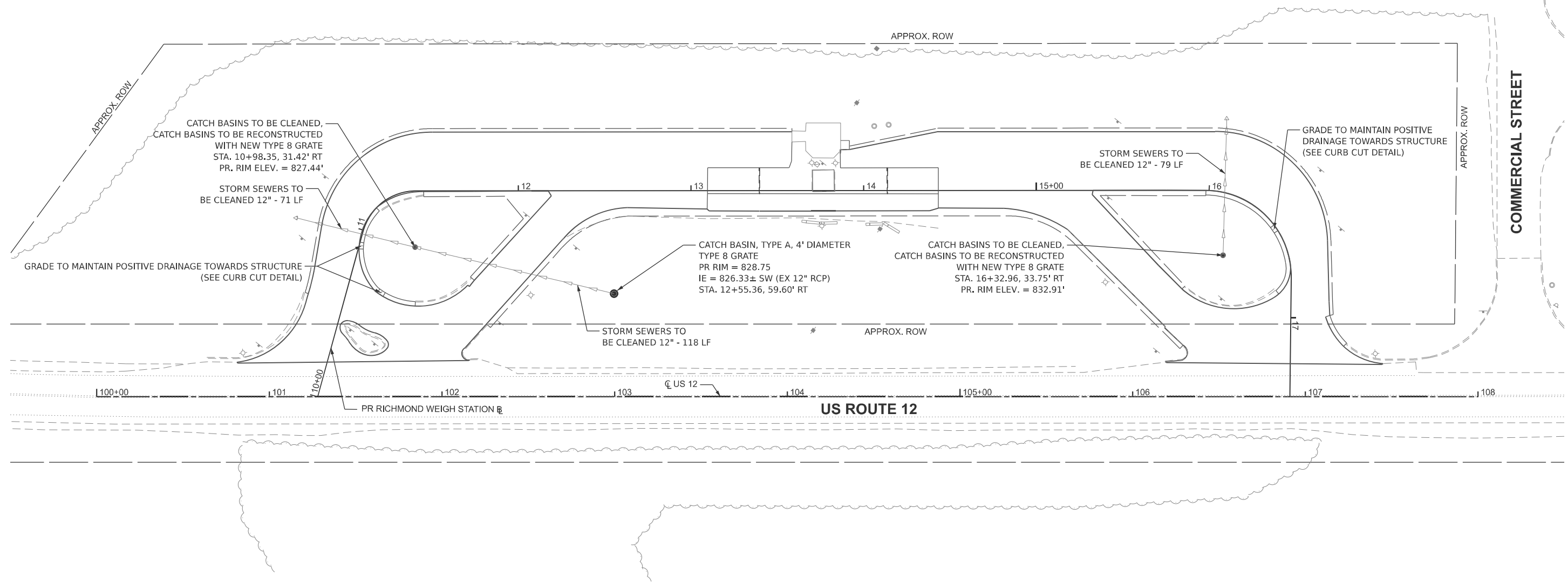
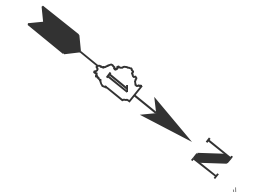
REVISED	-
REVISED	-
REVISED	-
REVISED	-

STATE OF ILLINOIS  
DEPARTMENT OF TRANSPORTATION

RICHMOND WEIGH STATION  
PAVEMENT MARKING AND SIGNAGE PLAN

SCALE: 1"=30' SHEET 1 OF 1 SHEETS STA. 99+50.00 TO STA. 108+50.00

F.A.P. RTE.	SECTION	COUNTY	TOTAL SHEETS	SHEET NO.
334	2025-1085-RS	MCHENRY	27	12
CONTRACT NO. 80B12			ILLINOIS FED. AID PROJECT	



MODEL: 80144\_Border  
 FILE NAME: N:\2025\250509\250509.03\Drawings\Mstn\Design\180144-ctf-borderNB.dgn



USER NAME = cwasowicz	DESIGNED -	REVISED -
	DRAWN -	REVISED -
	CHECKED -	REVISED -
PLOT DATE = 01/23/2026	DATE -	REVISED -

**STATE OF ILLINOIS  
DEPARTMENT OF TRANSPORTATION**

**RICHMOND WEIGH STATION  
DRAINAGE PLAN**

SCALE: 1"=30' SHEET 1 OF 1 SHEETS STA. 99+50.00 TO STA. 108+50.00

F.A.P. RTE.	SECTION	COUNTY	TOTAL SHEETS	SHEET NO.
334	2025-1085-RS	MCHENRY	27	13
CONTRACT NO. 80B12				
ILLINOIS FED. AID PROJECT				

**EROSION CONTROL NOTES**

1. A STAMPED AND SIGNED COPY OF THE APPROVED SOIL EROSION AND SEDIMENT CONTROL PLAN SHALL BE MAINTAINED ON THE SITE AT ALL TIMES AND BE PRESENTED WHEN REQUESTED.
2. THE CONTRACTOR SHALL BE RESPONSIBLE FOR EROSION AND SEDIMENTATION CONTROL AS SHOWN ON THESE DRAWINGS.
3. THE CONTRACTOR WILL BE REQUIRED TO IMPLEMENT AND MAINTAIN EROSION CONTROL MEASURES IMMEDIATELY AFTER STRIPPING OF EXISTING VEGETATION.
4. STOCKPILES OF SOIL AND OTHER BUILDING MATERIALS TO REMAIN IN PLACE MORE THAN SEVEN (7) DAYS SHALL BE FURNISHED WITH EROSION CONTROL AND SEDIMENT CONTROL MEASURES (I.E. PERIMETER SILT FENCE). STOCKPILES TO REMAIN IN PLACE FOR 14 DAYS OR MORE SHALL RECEIVE TEMPORARY SEEDING. TEMPORARY SEEDING WILL NOT BE PAID FOR SEPARATELY. NO ADDITIONAL COMPENSATION WILL BE ALLOWED.
5. THE CONTRACTOR SHALL TAKE ALL PRECAUTIONS TO PREVENT POLLUTION OF STORM WATER AND SHALL FOLLOW IEPA & IDOT CONSTRUCTION MEMORANDUM NO. 95-60.
6. SEEDING MIXTURE SHALL BE CLASS TYPE 2A AS DETAILED IN SECTION 250 OF THE STANDARD SPECIFICATIONS. PLANTING TIMES ARE LIMITED TO APRIL 1ST TO JUNE 15TH AND AUGUST 1ST TO NOVEMBER 1ST.
7. THE CONTRACTOR WILL BE REQUIRED TO HAVE A DESIGNATED CONCRETE WASHOUT AREA DURING ALL CONCRETE POURS.
8. ALL MATERIALS USED FOR TEMPORARY CONSTRUCTION ACTIVITIES WILL BE REMOVED TO UPLAND AREAS IMMEDIATELY FOLLOWING COMPLETION OF CONSTRUCTION ACTIVITY.
9. IN AREAS WHERE CONSTRUCTION ACTIVITY IS CEASED FOR 14 DAYS OR MORE, STABILIZATION MEASURES SHALL BE INITIATED WITHIN 7 DAYS.
10. ALL ADJACENT STREETS MUST BE KEPT CLEAR OF DEBRIS, INSPECTED DAILY AND CLEANED.
11. ALL SOIL EROSION AND SEDIMENT CONTROL PRACTICES ARE REFERENCED FROM THE ILLINOIS URBAN MANUAL WHEN NECESSARY OR AS DIRECTED BY THE ENGINEER.
12. THE CONTRACTOR IS RESPONSIBLE FOR INSTALLATION OF ANY ADDITIONAL EROSION CONTROL MEASURES NECESSARY TO PREVENT EROSION AND SEDIMENTATION AS DETERMINED BY THE ENGINEER.
13. THE MAINTENANCE AND REPAIR OR REPLACEMENT OF EROSION CONTROL ITEMS, WHEN DIRECTED BY THE ENGINEER, WILL NOT BE PAID FOR SEPARATELY, BUT SHALL BE INCLUDED IN THE COST OF THE ASSOCIATED PAY ITEMS.
14. TOPSOIL AND FERTILIZER NUTRIENTS ARE NOT REQUIRED FOR TEMPORARY EROSION CONTROL SEEDING.
15. SEED BED PREPARATION WILL NOT BE REQUIRED FOR TEMPOARARY EROSION CONTROL SEEDING IF THE SOIL IS IN A LOOSE CONDITION. LIGHT DISKING SHALL BE DONE IF THE SOIL IS HARD PACKED OR CAKED.
16. THE CONSTRUCTION LIMITS WILL BE STAKED BY THE CONTRACTOR PRIOR TO COMMENCING CONSTRUCTION. THE CONSTRUCTION LIMITS MAY BE ADJUSTED BY THE ENGINEER AND NO ADDITIONAL COMPENSATION WILL BE PAID TO THE CONTRACTOR FOR CHANGED CONSTRUCTION LIMITS.
17. ALL EROSION CONTROL MEASURES SHALL BE CHECKED WEEKLY AND AFTER EACH RAINFALL OF 0.5 INCHES OR GREATER IN A 24 HOUR PERIOD.
18. THE CONTRACTOR SHALL PROVIDED ADEQUATE STORAGE RECEPTACLES FOR THE DISPOSAL OF ALL CONSTRUCTION MATERIAL DEBRIS GENERATED DURING THE CONSTRUCTION PROCESS. THE CONTRACTOR MAY NOT DUMP OR DISCARD ANY CONSTRUCTION MATERIAL DEBRIS IN OR UPON THE PROJECT SITE.
19. ADDITIONAL CLEARING, EROSION CONTROL MEASURES, SEEDING, TOPSOIL PLACEMENT, OR OTHER MEASURES NEEDED FOR RESTORATION OF ACCESS ROUTES OR THE WORK AREA BEYOND THE LIMITS SHOWN IN THE PLAN SHALL BE INCLUDED IN THE COST OF THE CONTRACT UNLESS APPROVED BY THE ENGINEER.

**EROSION CONTROL SEQUENCES**

1. THE FOLLOWING EROSION CONTROL MEASURES ARE TO BE INSTALLED PRIOR TO THE START OF ANY CLEARING OR CONSTRUCTION:
  - PERIMETER EROSION BARRIER  
INSTALL ALL PERIMETER EROSION BARRIER AS SHOWN ON THE EROSION CONTROL PLANS TO PREVENT SEDIMENT FROM RUNOFF LEAVING THE DISTURBED AREAS.
2. WITHIN 7 DAYS OF THE COMPLETION OF CLEARING OR GRADING OR WITHIN 14 DAYS OF LAST DISTURBANCE, THE FOLLOWING MEASURES SHALL BE ENFORCED:
  - TEMPORARY STABILIZATION  
PROVIDE TEMPORARY STABILIZATION OVER AREAS THAT CANNOT BE STABILIZED WITH PERMANENT SEEDING FOR 14 DAYS OR MORE AND THUS REQUIRE TEMPORARY SEEDING AND TEMPORARY EROSION CONROL BLANKET.
  - PERMANENT EROSION CONTROL/LANDSCAPING  
PROVIDE PERMANENT VEGETATION AND INSTALL ALL PERMANENT LANDCAPING MEASURES AS SHOWN ON THE LANDSCAPING PLANS OR AS DIRECTED BY THE ENGINEER. THIS WORK SHALL BE COMPLETED BEFORE THE REMOVAL OF TEMPORARY EROSION CONTROL MEASURES.

MODEL: 80144 Border  
FILE NAME: N:\2025\250509\250509.03\Drawings\Main\Design\180144-ctrl-borderNB.dgn



V3 Companies  
7325 Janes Avenue  
Woodridge, IL 60517  
630 724 9200 phone  
www.v3co.com

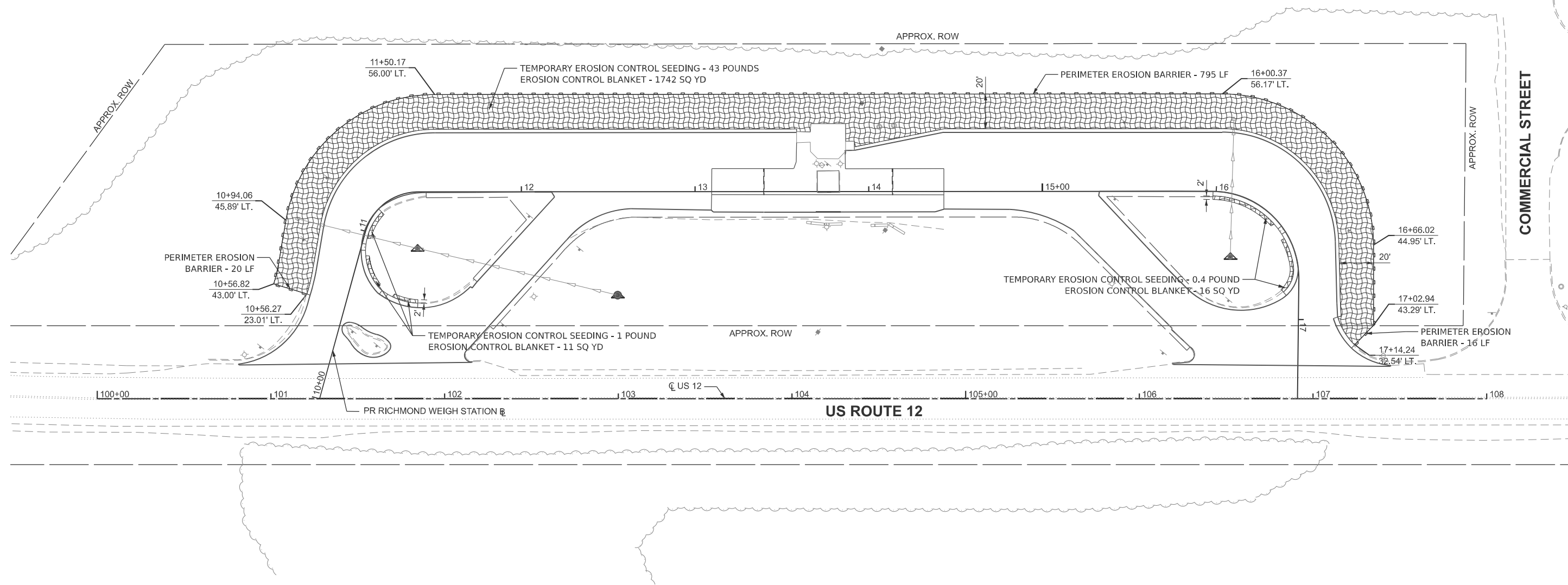
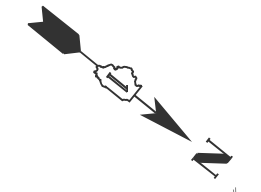
USER NAME = cwasowicz	DESIGNED -	REVISED -
	DRAWN -	REVISED -
	CHECKED -	REVISED -
PLOT DATE = 01/23/2026	DATE -	REVISED -

**STATE OF ILLINOIS  
DEPARTMENT OF TRANSPORTATION**

**EROSION CONTROL NOTES**

SCALE: NONE    SHEET 1 OF 1 SHEETS    STA.    TO STA.

F.A.P RTE.	SECTION	COUNTY	TOTAL SHEETS	SHEET NO.
334	2025-1085-RS	MCHENRY	27	14
CONTRACT NO. 80B12				
ILLINOIS FED. AID PROJECT				



EROSION CONTROL LEGEND	
	EROSION CONTROL BLANKET
	TEMPORARY ERPOSION CONTROL SEEDING
	INLET FILTER
	PERIMETER EROSION BARRIER



MODEL: 80144\_Border  
 FILE NAME: N:\2025\250509\250509.03\Drawings\Main\Design\180144-ctf-borderNB.dgn



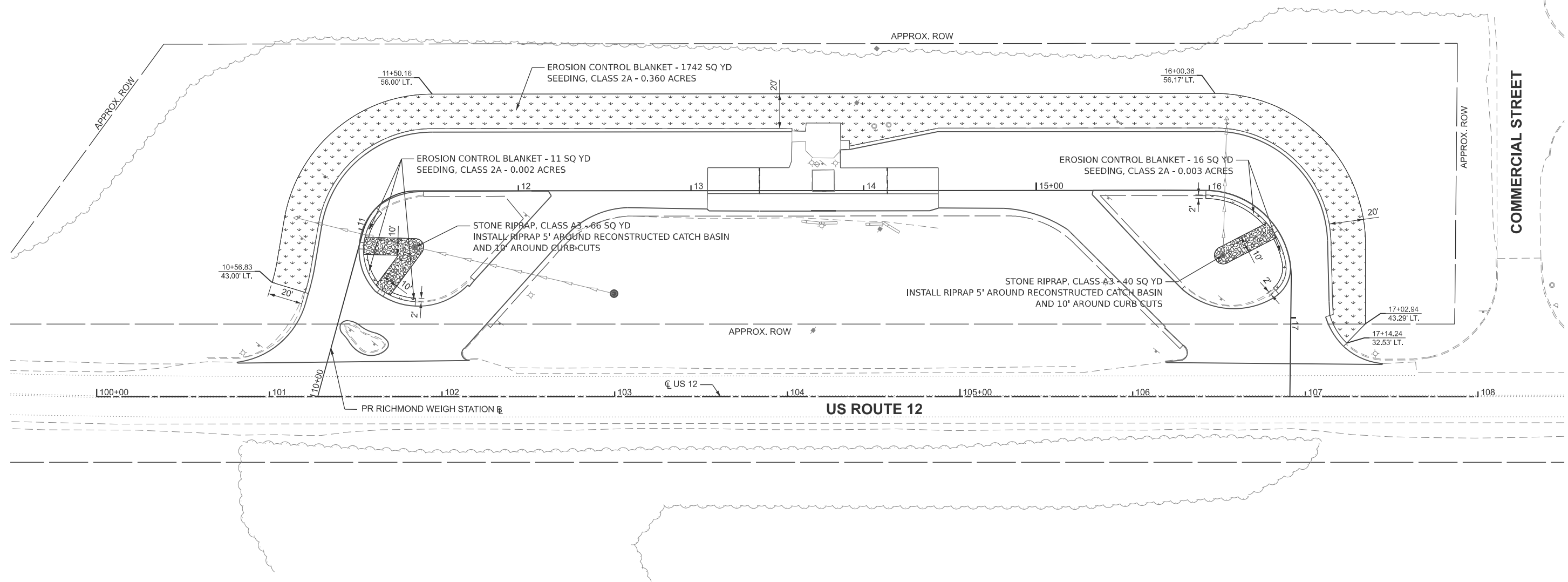
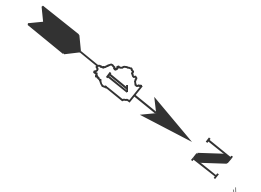
USER NAME = cwasowicz	DESIGNED -	REVISED -
	DRAWN -	REVISED -
	CHECKED -	REVISED -
PLOT DATE = 01/23/2026	DATE -	REVISED -

**STATE OF ILLINOIS**  
**DEPARTMENT OF TRANSPORTATION**

**RICHMOND WEIGH STATION**  
**EROSION CONTROL PLAN**

SCALE: 1"=30'    SHEET 1 OF 1 SHEETS    STA. 99+50.00    TO STA. 108+50.00

F.A.P. RTE.	SECTION	COUNTY	TOTAL SHEETS	SHEET NO.
334	2025-1085-RS	MCHENRY	27	15
CONTRACT NO. 80B12				
ILLINOIS FED. AID PROJECT				



LANDSCAPING LEGEND	
	EROSION CONTROL BLANKET SEEDING, CLASS 2A
	STONE RIPRAP, CLASS A3

MODEL: 80144 Border  
 FILE NAME: N:\2025\250509\250509.03\Drawings\Main\Design\180144-ctf-borderNB.dgn

**V3** Companies  
 7325 Janes Avenue  
 Woodridge, IL 60517  
 630 724 9200 phone  
 www.v3co.com

USER NAME = cwasowicz	DESIGNED -	REVISED -
	DRAWN -	REVISED -
	CHECKED -	REVISED -
PLOT DATE = 01/23/2026	DATE -	REVISED -

**STATE OF ILLINOIS**  
**DEPARTMENT OF TRANSPORTATION**

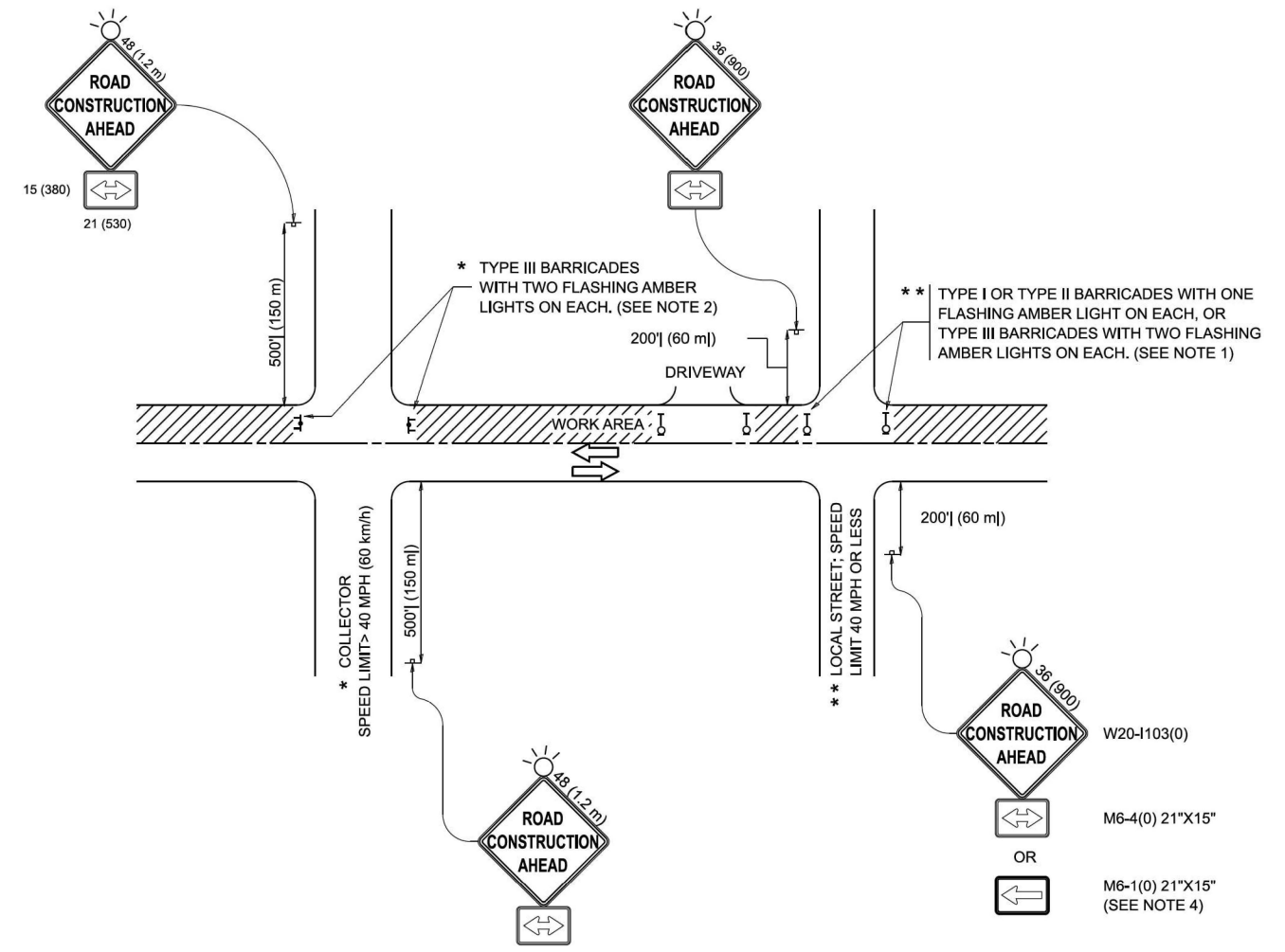
**RICHMOND WEIGH STATION**  
**LANDSCAPING PLAN**

SCALE: 1"=30'    SHEET 1 OF 1 SHEETS    STA. 99+50.00    TO STA. 108+50.00

F.A.P. RTE.	SECTION	COUNTY	TOTAL SHEETS	SHEET NO.
334	2025-1085-RS	MCHENRY	27	16
CONTRACT NO. 80B12			ILLINOIS FED. AID PROJECT	







**NOTES:**

1. SIDE ROAD WITH A SPEED LIMIT OF 40 MPH (60 km/h) OR LESS AS SHOWN ON THE DRAWING AND AS DIRECTED BY THE ENGINEER:
  - a) ONE "ROAD CONSTRUCTION AHEAD" SIGN 36 x 36 (900x900) WITH A FLASHER MOUNTED ON IT APPROXIMATELY 200' (60 m) IN ADVANCE OF THE MAIN ROUTE.
  - b) THE CLOSED PORTION OF THE MAIN ROUTE SHALL BE PROTECTED BY BLOCKING WITH TYPE I, TYPE II OR TYPE III BARRICADES, 1/3 OF THE CROSS SECTION OF THE CLOSED PORTION.
2. SIDE ROAD WITH A SPEED LIMIT GREATER THAN 40 MPH (60 km/h) AS SHOWN ON THE DRAWING AND AS DIRECTED BY THE ENGINEER:
  - a) ONE "ROAD CONSTRUCTION AHEAD" SIGN 48 x 48 (1.2 m x 1.2 m) WITH A FLASHER MOUNTED ON IT APPROXIMATELY 500' (150 m) IN ADVANCE OF THE MAIN ROUTE.
  - b) THE CLOSED PORTION OF THE MAIN ROUTE SHALL BE PROTECTED BY BLOCKING WITH TYPE III BARRICADES, 1/2 OF THE CROSS SECTION OF THE CLOSED PORTION.
3. CONES MAY BE SUBSTITUTED FOR BARRICADES OR DRUMS AT HALF THE SPACING DURING DAY OPERATIONS. CONES SHALL BE A MINIMUM OF 28 (710) IN HEIGHT.
4. WHEN THE SIDE ROAD LIES BETWEEN THE BEGINNING OF THE MAINLINE SIGNING AND THE WORK ZONE, A SINGLE HEADED ARROW (M6-1) SHALL BE USED IN LIEU OF THE DOUBLE HEADED ARROW (M6-4).
5. WHEN WORK IS BEING PERFORMED ON A SIDE ROAD OR DRIVEWAY, FOLLOW THE APPLICABLE STANDARD(S). THE DIRECTIONAL ARROW (M6-1 OR M6-4) SHALL BE COVERED OR REMOVED WHEN NO LONGER CONSISTENT WITH THE TRAFFIC CONTROL SET-UP.
6. ADVANCE WARNING SIGNS ARE TO BE OMITTED ON DRIVEWAYS UNLESS OTHERWISE SPECIFIED IN THE PLANS OR BY THE ENGINEER.
7. THE TRAFFIC CONTROL AND PROTECTION FOR SIDE ROADS, INTERSECTIONS, AND DRIVEWAYS SHALL BE INCLUDED IN THE COST OF SPECIFIED TRAFFIC CONTROL STANDARDS OR ITEMS.

All dimensions are in inches (millimeters) unless otherwise shown.

MODEL: TC-10 (Sheet)  
FILE NAME: c:\paw\_work\paw\lawrence.demanche\illinois.gov\d0951415\TC-10.dgn

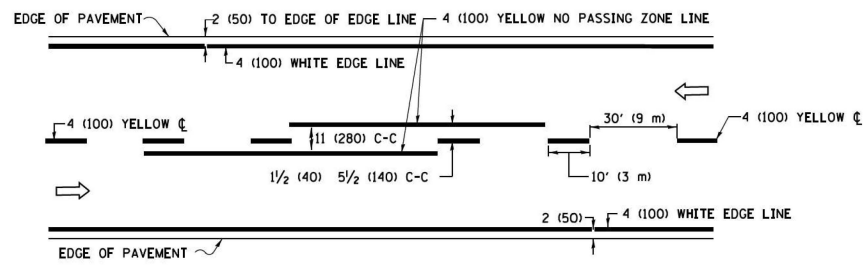
USER NAME = lawrence.demanche	DESIGNED - L.H.A.	REVISED - T. RAMMACHER 01-06-00
	DRAWN -	REVISED - A. SCHUETZE 07-01-13
PLOT SCALE = 0.083333317 / in.	CHECKED -	REVISED - A. SCHUETZE 09-15-06
PLOT DATE = 10/2/2025	DATE - 06-89	REVISED - D. SENDERAK 05-03-25

**STATE OF ILLINOIS  
DEPARTMENT OF TRANSPORTATION**

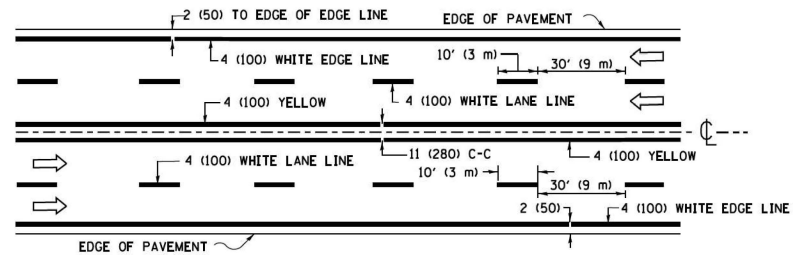
**TRAFFIC CONTROL AND PROTECTION FOR  
SIDE ROADS, INTERSECTIONS, AND DRIVEWAYS**

SCALE: SHEET OF SHEETS STA. TO STA.

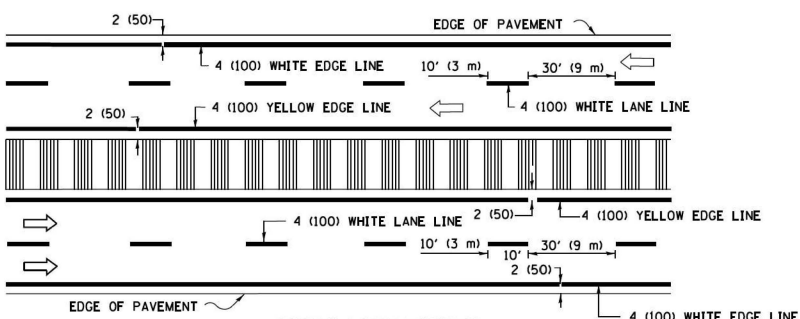
F.A.P. RTE.	SECTION	COUNTY	TOTAL SHEETS	SHEET NO.
334	2025-1085-RS	MCHENRY	27	19
<b>TC-10</b>			CONTRACT NO. 80B12	
ILLINOIS FED. AID PROJECT				



**2-LANE ROADWAY**

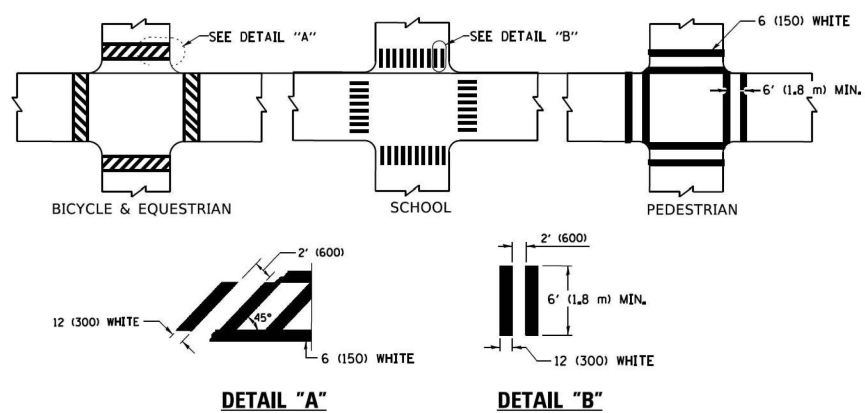


**MULTI-LANE UNDIVIDED**



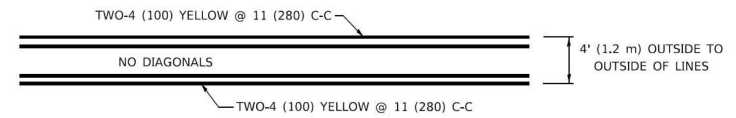
**MULTI-LANE DIVIDED WITH MEDIAN**

**TYPICAL LANE AND EDGE LINE MARKING**

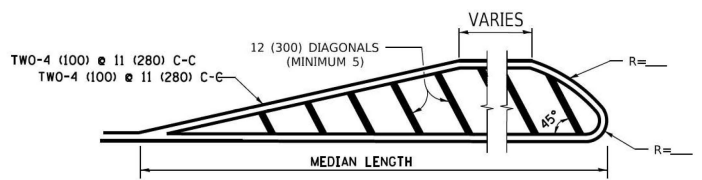


**TYPICAL CROSSWALK MARKING**

\* MARKINGS SHALL BE INSTALLED PARALLEL TO THE CENTERLINE OF THE ROAD WHICH IT CROSSES



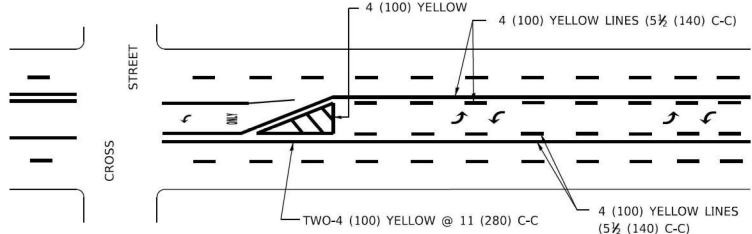
**4' (1.2 m) WIDE MEDIANS ONLY**



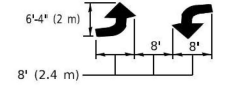
FOR MEDIAN LENGTHS WHERE DIAGONAL SPACING CANNOT BE ATTAINED, USE 5 (FIVE) EQUALLY SPACED DIAGONAL LINES.

DIAGONAL LINE SPACING: 50' (15 m) C-C (LESS THAN 30MPH (50 km/h))  
75' (25 m) C-C 30MPH (50 km/h) TO 45MPH (70 km/h)  
150' (45 m) C-C (MORE THAN 45MPH (70 km/h))

**MEDIANS OVER 4' (1.2 m) WIDE**

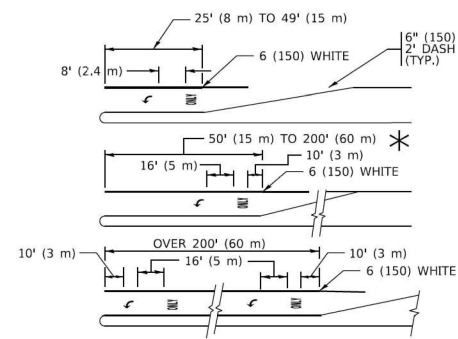


A MINIMUM OF TWO PAIRS OF TURN ARROWS SHALL BE USED, WHITE IN COLOR. ADDITIONAL PAIRS SHALL BE PLACED AT 200' (60 m) TO 300' (90 m) INTERVALS.



**MEDIAN WITH TWO-WAY LEFT TURN LANE**

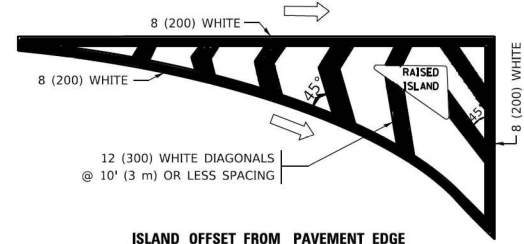
**TYPICAL PAINTED MEDIAN MARKING**



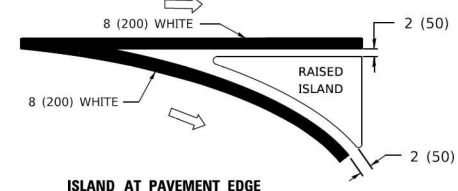
FULL SIZE LETTERS 8' (2.4 m) AND ARROWS SHALL BE USED.  
AREA = 15.6 SQ. FT. (1.5 m<sup>2</sup>) ONLY AREA = 20.8 SQ. FT. (1.9 m<sup>2</sup>)  
\* TURN LANES IN EXCESS OF 400' (120 m) IN LENGTH MAY HAVE AN ADDITIONAL SET OF ARROW - "ONLY" INSTALLED MIDWAY BETWEEN THE OTHER TWO SETS OF ARROW - "ONLY".

**TYPICAL LEFT (OR RIGHT) TURN LANE**

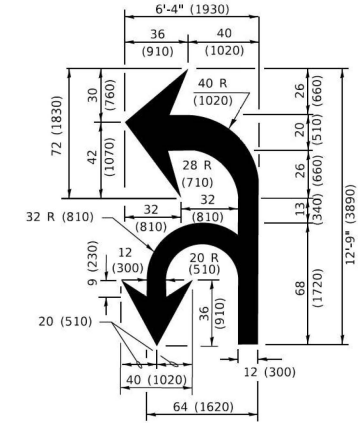
**TYPICAL TURN LANE MARKING**



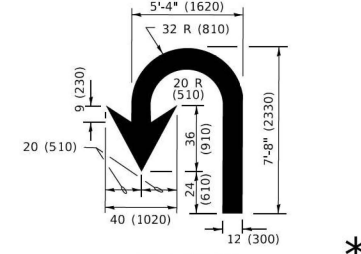
**ISLAND OFFSET FROM PAVEMENT EDGE**



**TYPICAL ISLAND MARKING**



**COMBINATION LEFT AND U-TURN**



**LANE REDUCTION TRANSITION**

\* LANE REDUCTION ARROWS REQUIRED AT SPEEDS OF 45 MPH OR GREATER OR WHEN SPECIFIED IN PLANS.

D(FT)	SPEED LIMIT
345	30
425	35
500	40
580	45
665	50
750	55

TYPE OF MARKING	WIDTH OF LINE	PATTERN	COLOR	SPACING / REMARKS
CENTERLINE ON 2 LANE PAVEMENT	4 (100)	SKIP-DASH	YELLOW	10' (3 m) LINE WITH 30' (9 m) SPACE
CENTERLINE ON MULTI-LANE UNDIVIDED PAVEMENT	2 @ 4 (100)	SOLID	YELLOW	11 (280) C-C
NO PASSING ZONE LINES; FOR ONE DIRECTION FOR BOTH DIRECTIONS	4 (100) 2 @ 4 (100)	SOLID SOLID	YELLOW YELLOW	5 1/2 (140) C-C FROM SKIP-DASH CENTERLINE 11 (280) C-C OMIT SKIP-DASH CENTERLINE BETWEEN
LANE LINES	4 (100) 5 (125) ON FREEWAYS	SKIP-DASH SKIP-DASH	WHITE WHITE	10' (3 m) LINE WITH 30' (9 m) SPACE
DOTTED LINES (EXTENSIONS OF CENTER, LANE OR TURN LANE MARKINGS)	SAME AS LINE BEING EXTENDED	SKIP-DASH	SAME AS LINE BEING EXTENDED	2' (600) LINE WITH 6' (1.8 m) SPACE
EDGE LINES	4 (100)	SOLID	YELLOW-LEFT WHITE-RIGHT	OUTLINE MEDIANS IN YELLOW
TURN LANE MARKINGS	6 (150) LINE; FULL SIZE LETTERS & SYMBOLS (8' (2.4m))	SOLID	WHITE	SEE TYPICAL TURN LANE MARKING DETAIL
TWO WAY LEFT TURN MARKING	2 @ 4 (100) EACH DIRECTION 8' (2.4m) LEFT ARROW	SKIP-DASH AND SOLID IN PAIRS	YELLOW WHITE	10' (3 m) LINE WITH 30' (9 m) SPACE FOR SKIP-DASH; 5 1/2 (140) C-C BETWEEN SOLID LINE AND SKIP-DASH LINE SEE TYPICAL TWO-WAY LEFT TURN MARKING DETAIL
CROSSWALK LINES (PEDESTRIAN) A. DIAGONALS (BIKE & EQUESTRIAN) B. LONGITUDINAL BARS (SCHOOL)	2 @ 6 (150) 12 (300) @ 45° 12 (300) @ 90°	SOLID SOLID SOLID	WHITE WHITE WHITE	NOT LESS THAN 6' (1.8 m) APART 2' (600) APART 2' (600) APART SEE TYPICAL CROSSWALK MARKING DETAILS.
STOP LINES	24 (600)	SOLID	WHITE	PLACE 4' (1.2 m) IN ADVANCE OF AND PARALLEL TO CROSSWALK, IF PRESENT. OTHERWISE, PLACE AT DESIRED STOPPING POINT. PARALLEL TO CROSSROAD CENTERLINE, WHERE POSSIBLE.
PAINTED MEDIANS	2 @ 4 (100) WITH 12 (300) DIAGONALS @ 45° NO DIAGONALS USED FOR 4' (1.2 m) WIDE MEDIANS	SOLID	YELLOW: TWO WAY TRAFFIC WHITE: ONE WAY TRAFFIC	11 (280) C-C FOR THE DOUBLE LINE SEE TYPICAL PAINTED MEDIAN MARKING.
GORE MARKING AND CHANNELIZING LINES	8 (200) WITH 12 (300) DIAGONALS @ 45°	SOLID	WHITE	DIAGONALS: 15' (4.5 m) C-C (LESS THAN 30MPH (50 km/h)) 20' (6 m) C-C 30MPH (50 km/h) TO 45MPH (70 km/h) 30' (9 m) C-C (OVER 45MPH (70 km/h))
RAILROAD CROSSING	24 (600) TRANSVERSE LINES: "RR" 15' 6" (1.8 m) LETTERS; 16 (400) LINE FOR "X"	SOLID	WHITE	SEE STATE STANDARD 780001 AREA OF: *R*=3.6 SQ. FT. (0.33 m <sup>2</sup> ) EACH *X*=54.0 SQ. FT. (5.0 m <sup>2</sup> )
SHOULDER DIAGONALS (REQUIRED FOR SHOULDERS > 8')	12 (300) @ 45°	SOLID	WHITE - RIGHT YELLOW - LEFT	50' (15 m) C-C (LESS THAN 30MPH (50 km/h)) 75' (25 m) C-C (30 MPH (50 km/h) TO 45MPH (70 km/h)) 150' (45 m) C-C (OVER 45MPH (70 km/h))
U TURN ARROW	SEE DETAIL	SOLID	WHITE	16.3 SF
2 ARROW COMBINATION LEFT AND U TURN	SEE DETAIL	SOLID	WHITE	30.4 SF

FOR FURTHER DETAILS ON PAVEMENT MARKING REFER TO STANDARD SPECIFICATIONS FOR ROAD AND BRIDGE CONSTRUCTION AND STATE STANDARD 780001.

All dimensions are in inches (millimeters) unless otherwise shown.

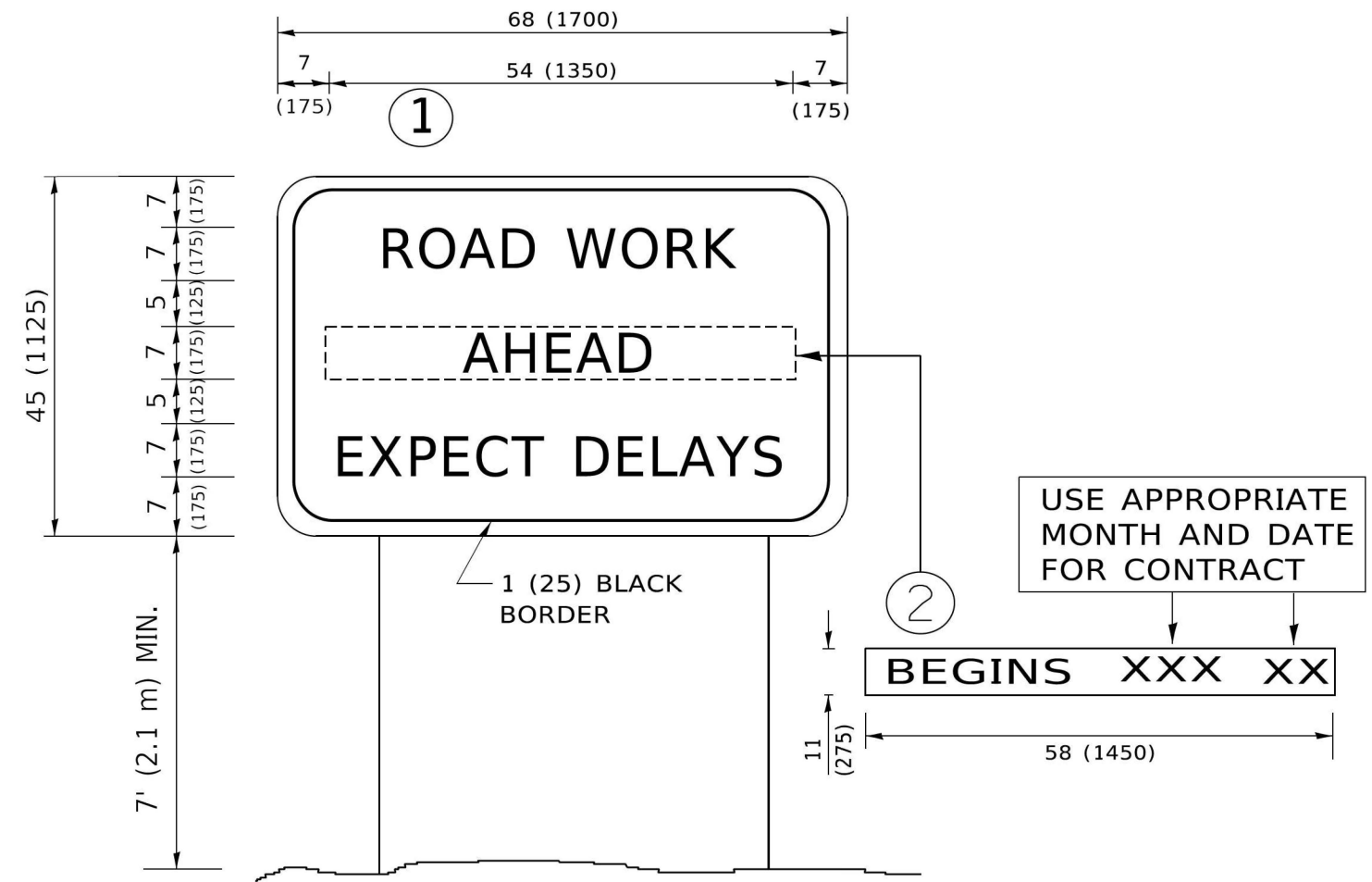
MODEL: D:\draft\...  
FILE NAME: p:\projects\104848\104848.dwg  
PROJECT: 104848  
DATE: 03/19/2019

USER NAME	DESIGNED	REVISED
= footemj	- EVERS	- C. JUCIUS 09-09-09
	-	- C. JUCIUS 07-01-13
	-	- C. JUCIUS 12-21-15
	-	- C. JUCIUS 04-12-16

**STATE OF ILLINOIS  
DEPARTMENT OF TRANSPORTATION**

DISTRICT ONE	
TYPICAL PAVEMENT MARKINGS	
SCALE: NONE	SHEET 1 OF 2 SHEETS
STA.	TO STA.

F.A.P. RTE.	SECTION	COUNTY	TOTAL SHEETS	SHEET NO.
334	2025-1085-RS	MCHENRY	27	20
TC-13		CONTRACT NO. 80B12		
ILLINOIS		FED. AID PROJECT		



**NOTES:**

1. USE BLACK LETTERING ON ORANGE BACKGROUND.
2. ERECT SIGNS IN ADVANCE OF THE LOCATION FOR THE "ROAD CONSTRUCTION AHEAD" SIGN AT LOCATIONS AS DIRECTED BY THE ENGINEER.
3. ERECT SIGN ① WITH INSTALLED PANEL ② ONE WEEK PRIOR TO THE START OF CONSTRUCTION.
4. REMOVE PANEL ② SOON AFTER THE START OF CONSTRUCTION.
5. SEE SPECIAL PROVISION FOR "TEMPORARY INFORMATION SIGNING" FOR ADDITIONAL INFORMATION.
6. ONE SIGN ASSEMBLY EQUALS 25.70 SQ. FT. (2.3 SQ. M.)
7. SHALL BE PAID FOR AS TEMPORARY INFORMATION SIGNING.

ALL DIMENSIONS ARE IN INCHES (MILLIMETERS) UNLESS OTHERWISE SHOWN.

MODEL: D:\info\h...  
 FILE NAME: p...

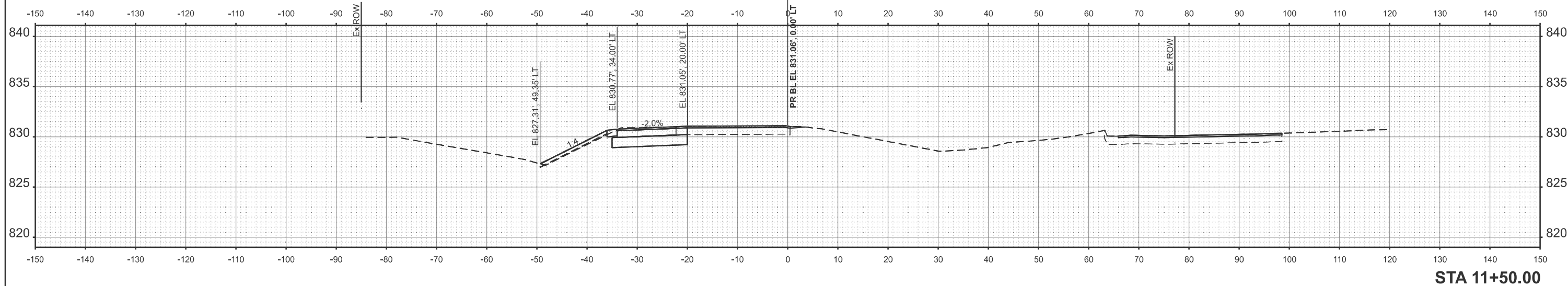
USER NAME = foatemj	DESIGNED -	REVISED - R. MIRS 09-15-97
	DRAWN -	REVISED - R. MIRS 12-11-97
PLOT SCALE = 50.0000 ' / in.	CHECKED -	REVISED - T. RAMMACHER 02-02-99
PLOT DATE = 3/4/2019	DATE -	REVISED - C. JUCIUS 01-31-07

**STATE OF ILLINOIS  
DEPARTMENT OF TRANSPORTATION**

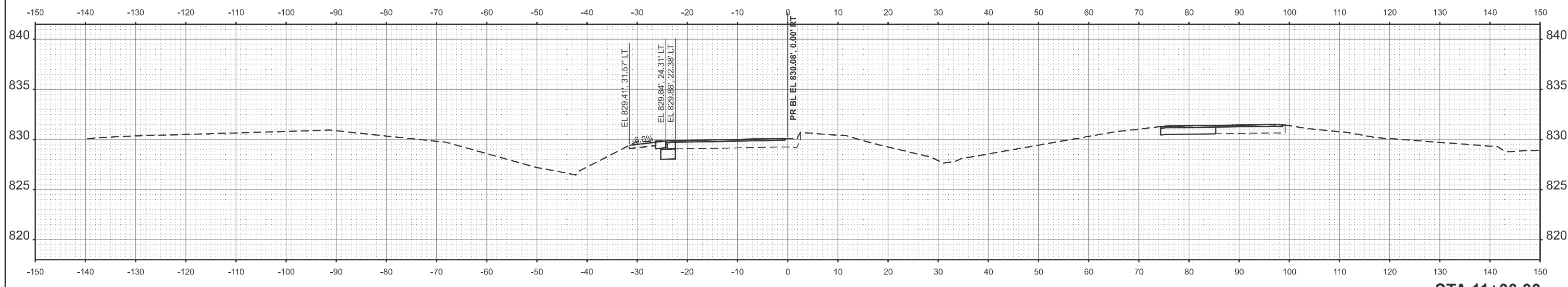
**ARTERIAL ROAD  
INFORMATION SIGN**

SCALE: NONE SHEET 1 OF 1 SHEETS STA. TO STA.

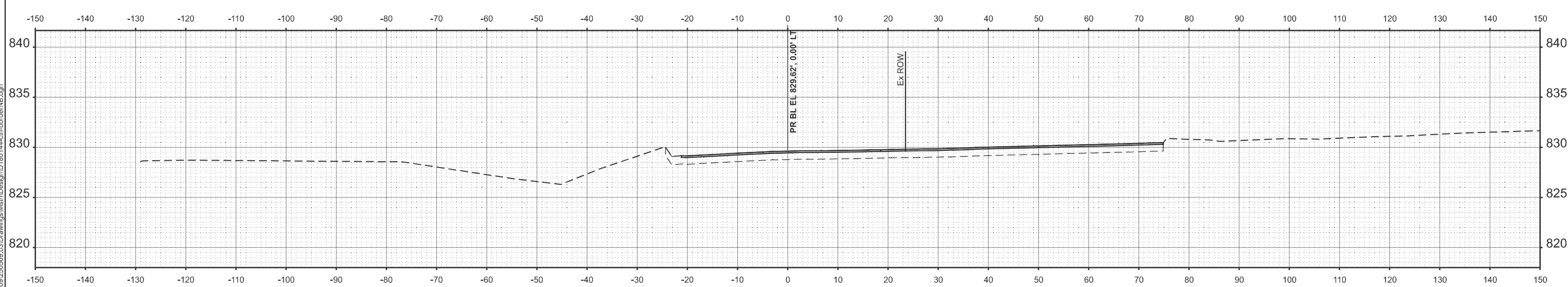
F.A.P. RTE.	SECTION	COUNTY	TOTAL SHEETS	SHEET NO.
334	2025-1085-RS	MCHENRY	27	21
<b>TC-22</b>		CONTRACT NO. 80B12		
ILLINOIS FED. AID PROJECT				



STA 11+50.00



STA 11+00.00



STA 10+50.00

MODEL: 80144 Border  
 FILE NAME: N:\2025\250509\250509\03\Drawings\Misc\Design\180144-ctf-borderNB.dgn



USER NAME = cwasowicz	DESIGNED -	REVISED -
	DRAWN -	REVISED -
	CHECKED -	REVISED -
PLOT DATE = 01/23/2026	DATE -	REVISED -

STATE OF ILLINOIS  
 DEPARTMENT OF TRANSPORTATION

RICHMOND WEIGH STATION  
 CROSS SECTIONS

SCALE: 1"=10' SHEET 1 OF 6 SHEETS STA. TO STA.

F.A.P. RTE.	SECTION	COUNTY	TOTAL SHEETS	SHEET NO.
334	2025-1085-RS	MCHENRY	27	22
CONTRACT NO. 80B12				
ILLINOIS FED. AID PROJECT				

MODEL: 80144 Border  
 FILE NAME: N:\2025\250509\03\Drawings\Main\Design\180144-ctf-borderNB.dgn



USER NAME	= cwasowicz
DESIGNED	-
DRAWN	-
CHECKED	-
DATE	-
PLOT DATE	= 01/23/2026

DESIGNED	-
REVISIONS	-
CHECKED	-
DATE	-

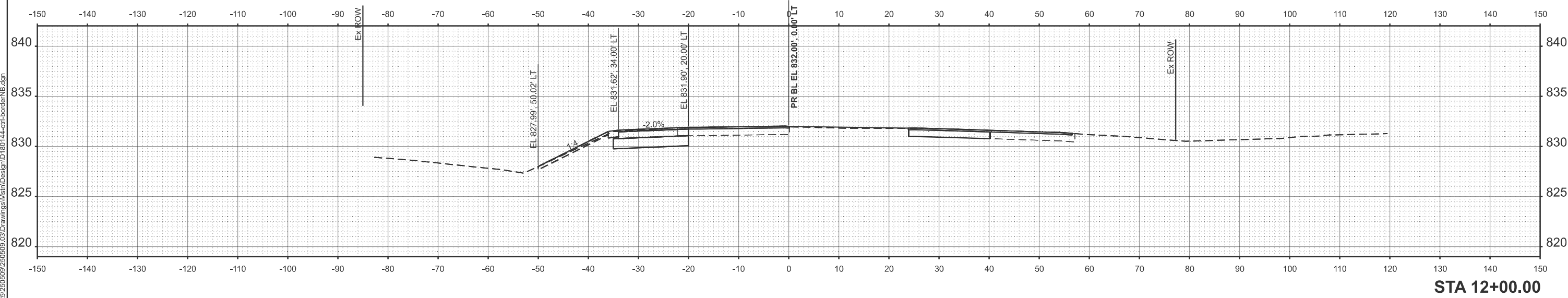
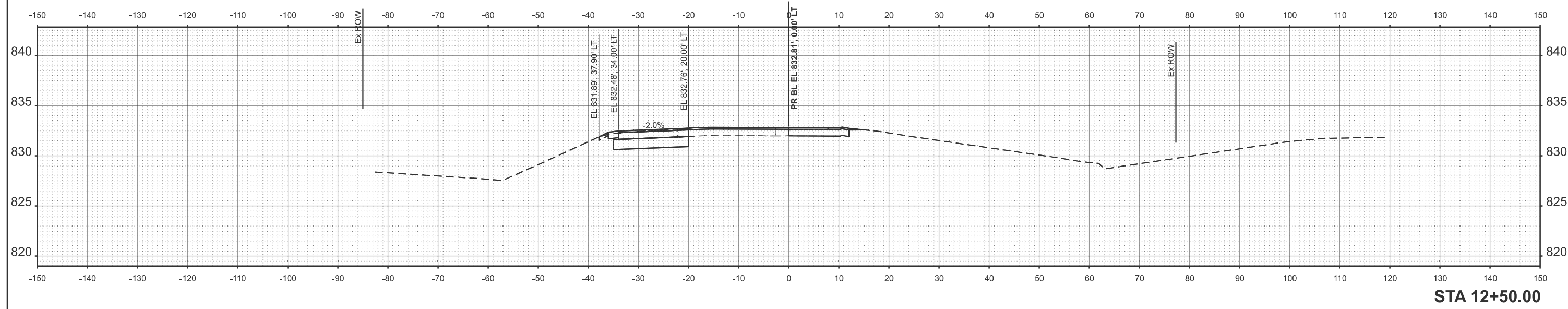
REVISIONS	-
REVISIONS	-
REVISIONS	-
REVISIONS	-

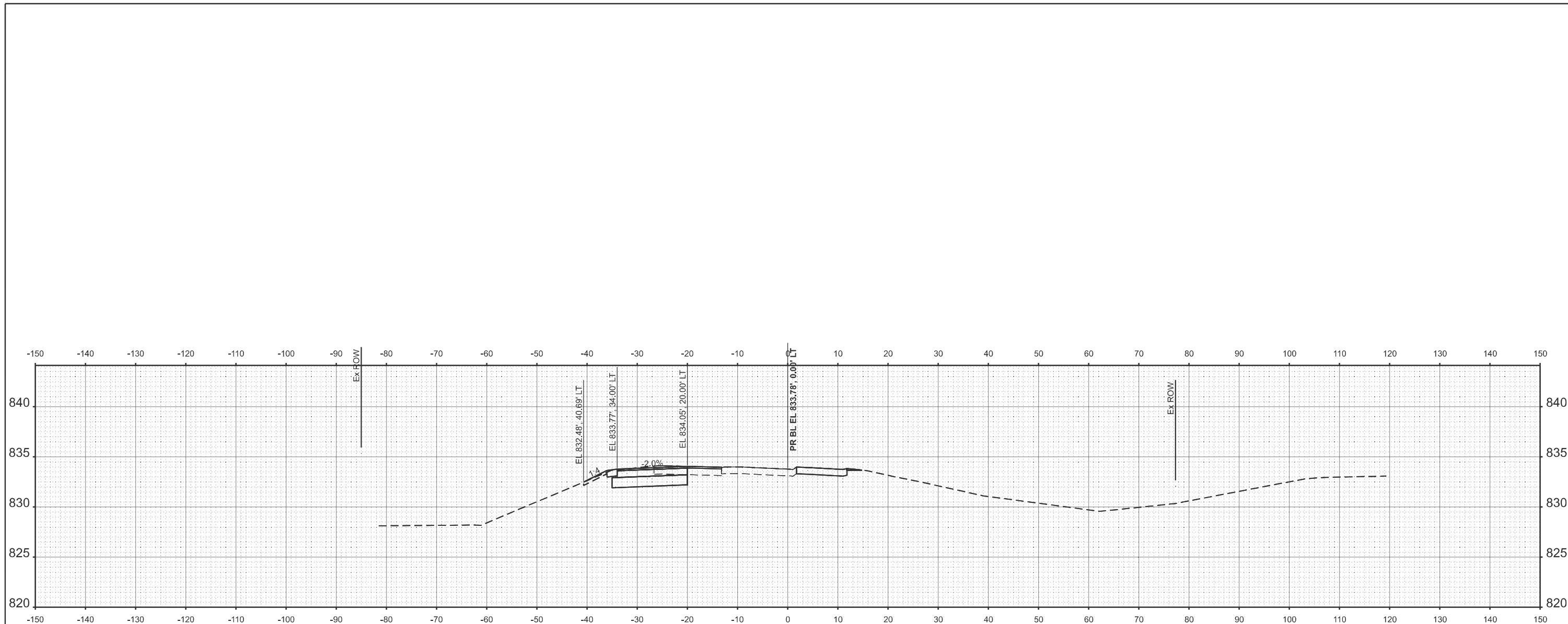
**STATE OF ILLINOIS  
 DEPARTMENT OF TRANSPORTATION**

**RICHMOND WEIGH STATION  
 CROSS SECTIONS**

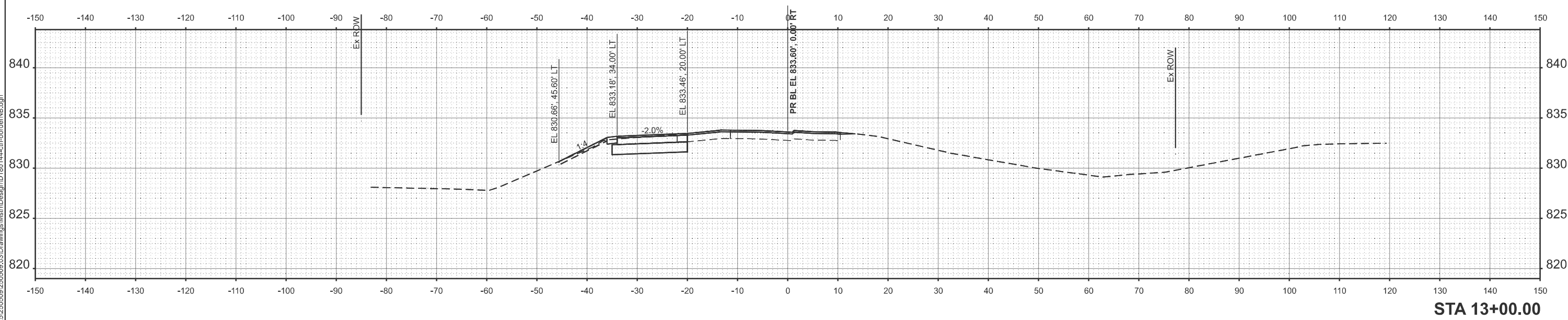
SCALE: 1"=10'    SHEET 2    OF 6    SHEETS    STA.    TO STA.

F.A.P. RTE.	SECTION	COUNTY	TOTAL SHEETS	SHEET NO.
334	2025-1085-RS	MCHENRY	27	23
CONTRACT NO. 80B12				
ILLINOIS FED. AID PROJECT				





STA 13+50.00



STA 13+00.00

MODEL: 80144 Border  
 FILE NAME: N:\2025\250509\250509.03\Drawings\Main\Design\180144-clf-borderNB.dgn



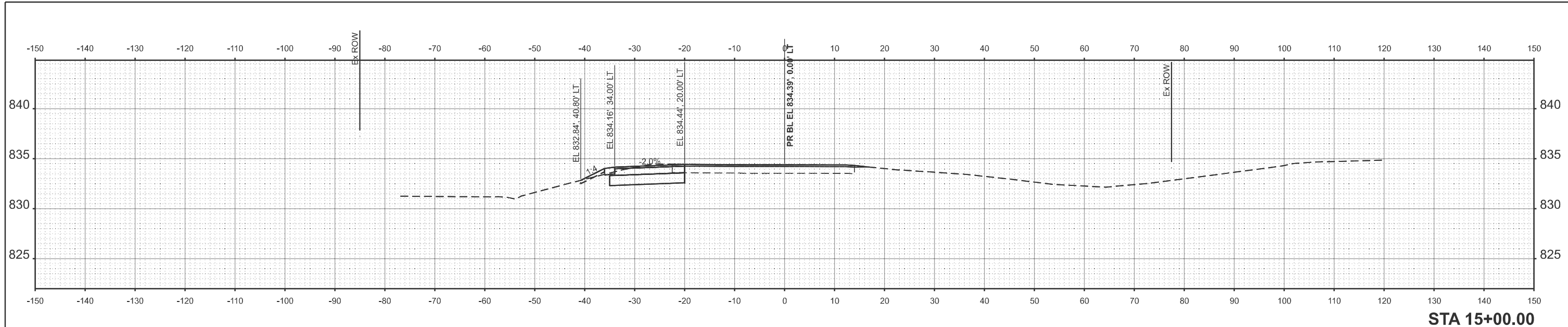
USER NAME = cwasowicz	DESIGNED -	REVISED -
	DRAWN -	REVISED -
	CHECKED -	REVISED -
PLOT DATE = 01/23/2026	DATE -	REVISED -

**STATE OF ILLINOIS**  
**DEPARTMENT OF TRANSPORTATION**

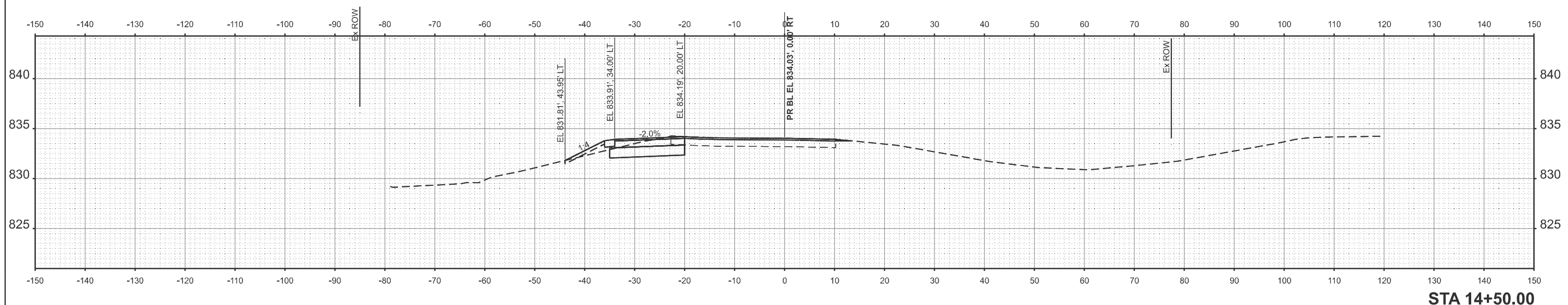
**RICHMOND WEIGH STATION**  
**CROSS SECTIONS**

SCALE: 1"=10'    SHEET 3    OF 6    SHEETS    STA.    TO STA.

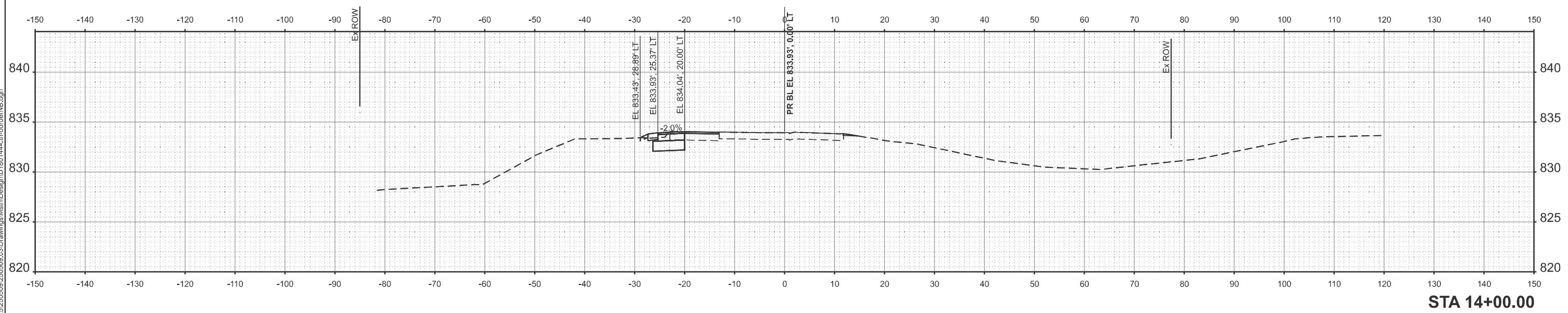
F.A.P. RTE.	SECTION	COUNTY	TOTAL SHEETS	SHEET NO.
334	2025-1085-RS	MCHENRY	27	24
CONTRACT NO. 80B12				
ILLINOIS FED. AID PROJECT				



STA 15+00.00



STA 14+50.00



STA 14+00.00

MODEL: 80144 Border  
FILE NAME: N:\2025\250509\250509.03\Drawings\Main\Design\180144-ctf-borderNB.dgn



V3 Companies  
7325 Janes Avenue  
Woodridge, IL 60517  
630 724 9200 phone  
www.v3co.com

USER NAME = cwasowicz  
DESIGNED -  
DRAWN -  
CHECKED -  
PLOT DATE = 01/23/2026

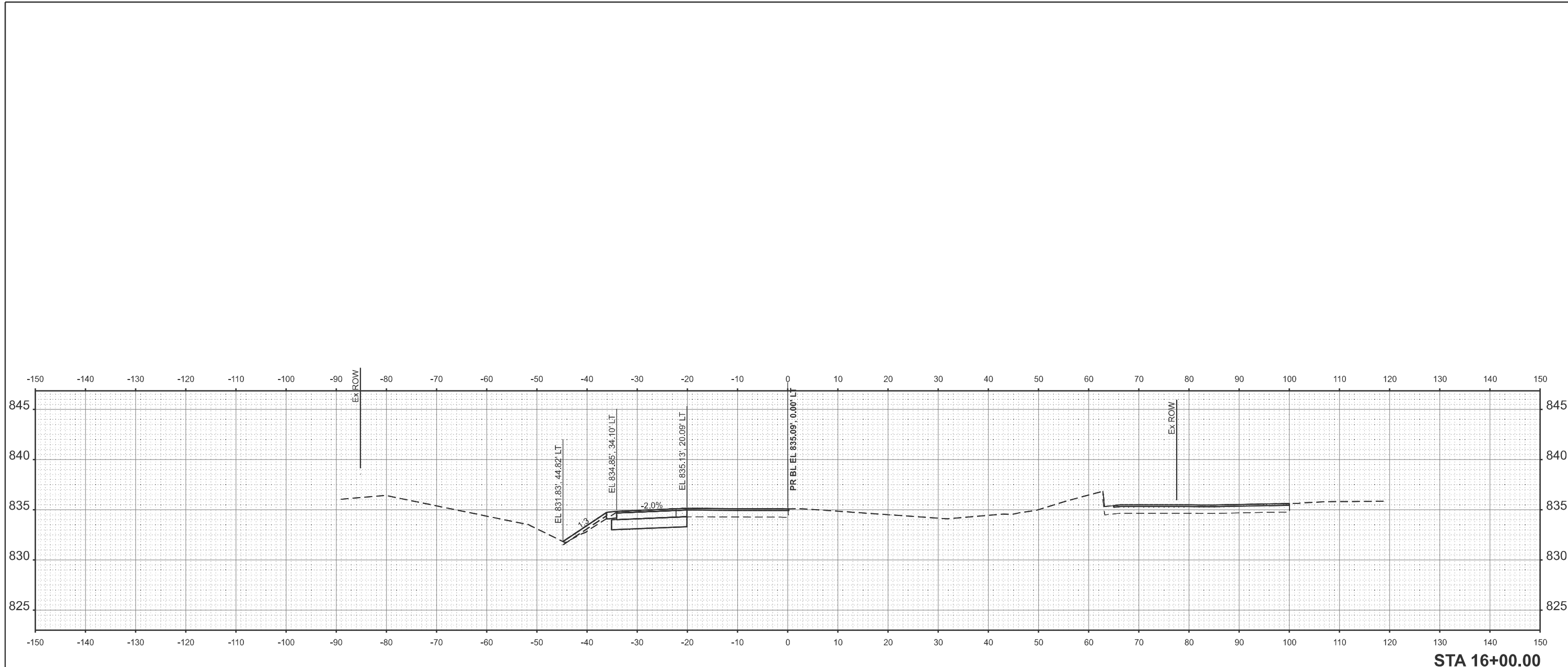
REVISED -  
REVISED -  
REVISED -  
REVISED -

STATE OF ILLINOIS  
DEPARTMENT OF TRANSPORTATION

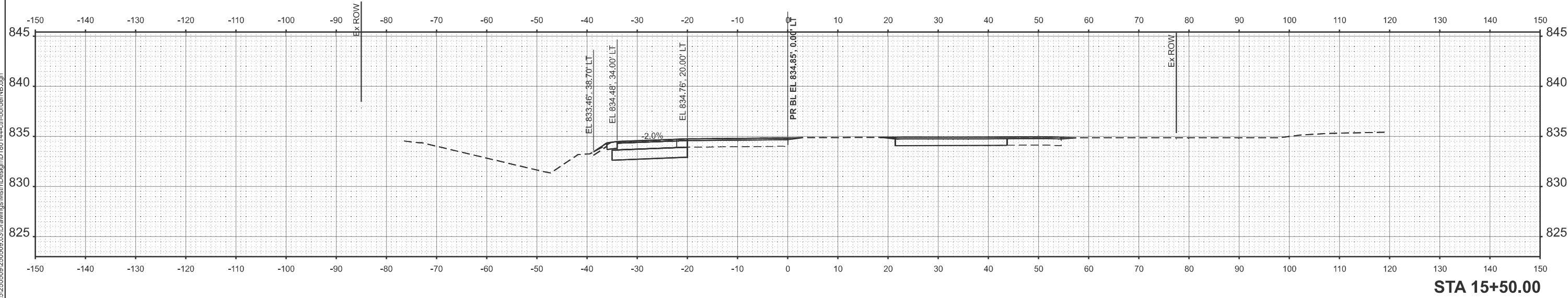
RICHMOND WEIGH STATION  
CROSS SECTIONS

SCALE: 1"=10' SHEET 4 OF 6 SHEETS STA. TO STA.

F.A.P. RTE.	SECTION	COUNTY	TOTAL SHEETS	SHEET NO.
334	2025-1085-RS	MCHENRY	27	25
CONTRACT NO. 80B12				
ILLINOIS FED. AID PROJECT				



STA 16+00.00



STA 15+50.00

MODEL: 80144 Border  
 FILE NAME: N:\2025\250509\250509\03\Drawings\Main\Design\180144-ctf-borderNB.dgn



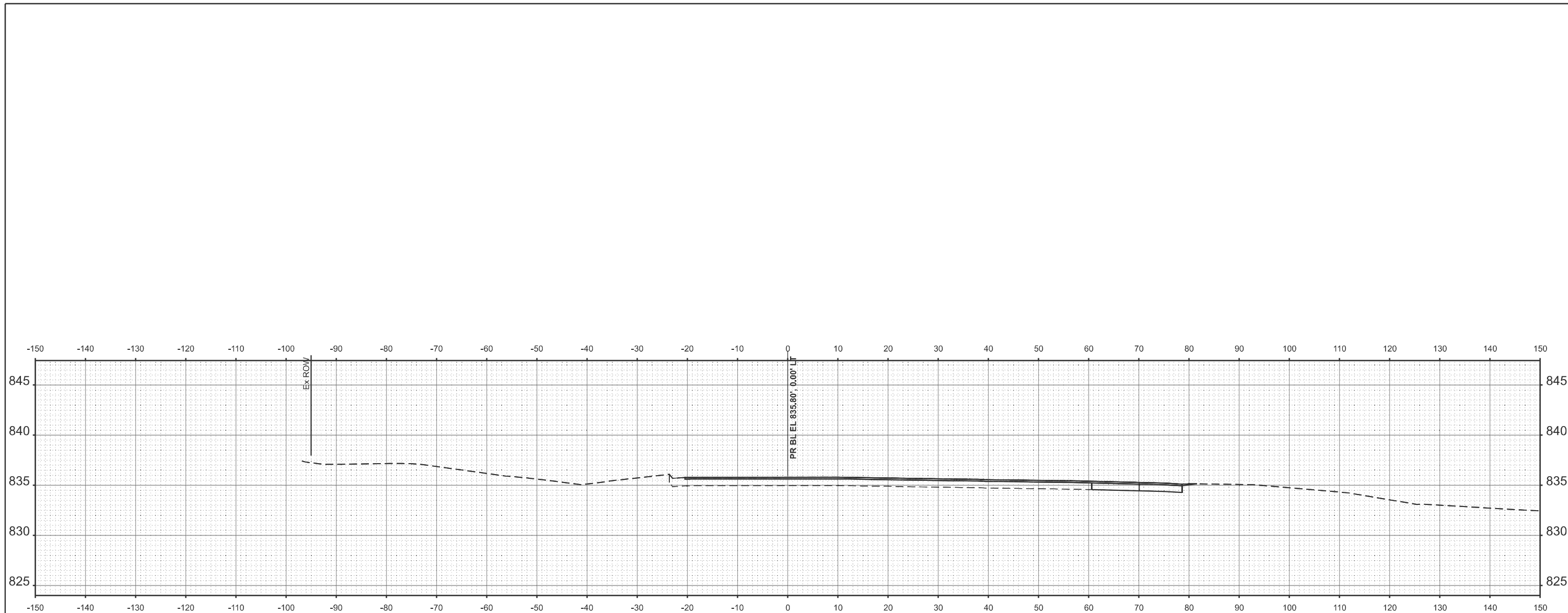
USER NAME = cwasowicz	DESIGNED -	REVISED -
	DRAWN -	REVISED -
	CHECKED -	REVISED -
PLOT DATE = 01/23/2026	DATE -	REVISED -

**STATE OF ILLINOIS**  
**DEPARTMENT OF TRANSPORTATION**

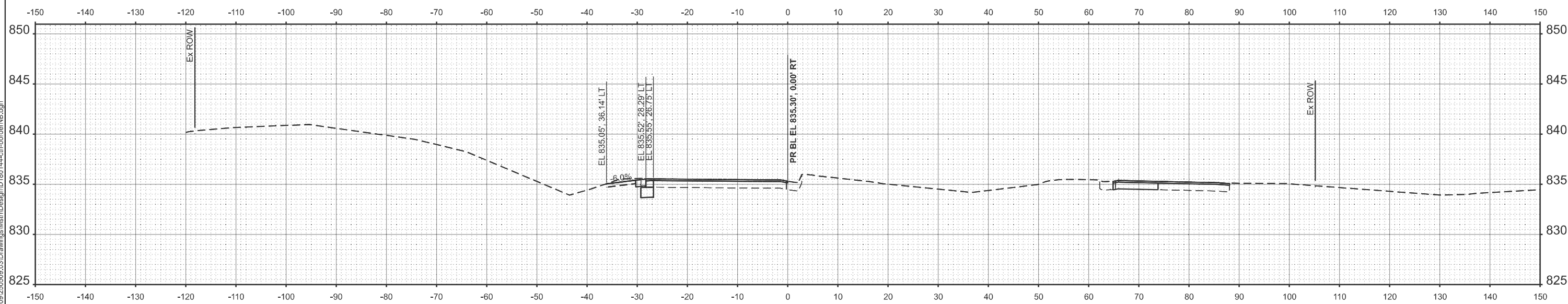
**RICHMOND WEIGH STATION**  
**CROSS SECTIONS**

SCALE: 1"=10'    SHEET 5    OF 6    SHEETS    STA.    TO STA.

F.A.P. RTE.	SECTION	COUNTY	TOTAL SHEETS	SHEET NO.
334	2025-1085-RS	MCHENRY	27	26
CONTRACT NO. 80B12				
ILLINOIS FED. AID PROJECT				



STA 17+00.00



STA 16+50.00

MODEL: 80144 Border  
FILE NAME: N:\2025\250509\250509.03\Drawings\Misc\Design\180144-ctf-borderNB.dgn



USER NAME = cwasowicz	DESIGNED -	REVISED -
	DRAWN -	REVISED -
	CHECKED -	REVISED -
PLOT DATE = 01/23/2026	DATE -	REVISED -

STATE OF ILLINOIS  
DEPARTMENT OF TRANSPORTATION

RICHMOND WEIGH STATION  
CROSS SECTIONS

SCALE: 1"=10' SHEET 6 OF 6 SHEETS STA. TO STA.

F.A.P. RTE.	SECTION	COUNTY	TOTAL SHEETS	SHEET NO.
334	2025-1085-RS	MCHENRY	27	27
CONTRACT NO. 80B12				
ILLINOIS FED. AID PROJECT				