

STATE OF ILLINOIS
DEPARTMENT OF TRANSPORTATION

**PROPOSED
HIGHWAY PLANS**

FAI ROUTE 80: I-80 AT MAPLE RD
(S.N. 099-0198)

SECTION: (99-5HB-3) BDR,BJR 25
PROJECT: NHPP- MQX8(396)
BRIDGE JOINT REPLACE/REPAIR
BRIDGE DECK OVERLAY

WILL COUNTY

C-91-011-26

R 11 E

C.H. RTE.	SECTION	COUNTY	TOTAL SHEETS	SHEET NO.
38	(99-5HB-3) BDR,BJR 25	WILL	25	1
		ILLINOIS	CONTRACT NO. 80B46	

D-91-010-26



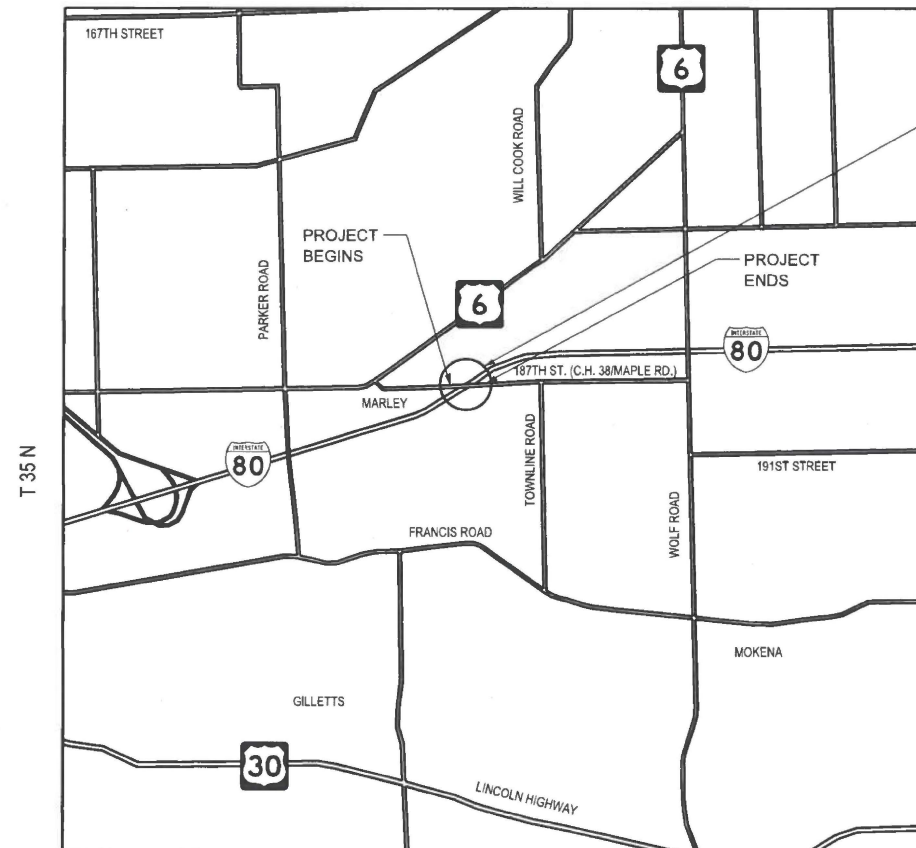
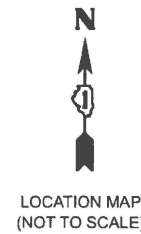
FOR INDEX OF SHEETS, SEE SHEET NO. 2

THE PROJECT IS LOCATED IN
NEW LENOX TOWNSHIP

TRAFFIC DATA

W 187TH STREET
POSTED SPEED LIMIT: 30 MPH
2023 ADT: 8000 VPD
FUNCTIONAL CLASSIFICATION: LOCAL ROAD OR STREET

INTERSTATE 80
POSTED SPEED LIMIT: 65 MPH
2023 ADT: 94400 VPD (23.8% HEAVY COMMERCIAL)
FUNCTIONAL CLASSIFICATION: INTERSTATE

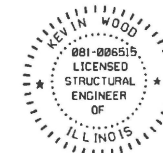


187TH STREET OVER INTERSTATE 80
(S.N. 099-0198)



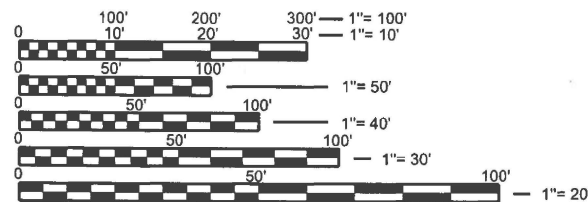
Jeff Orzech
JEFFREY S. ORZECH
ILLINOIS P.E. 062-053695
EXPIRES 11/30/2027
SIGNATURE AND SEAL
APPLY TO ALL SHEETS AS NOTED BELOW:
SHEETS 1-8, 19-25

12/1/2025
DATE



Kevin Wood
KEVIN WOOD
ILLINOIS S.E. 081-006515
EXPIRES 11/30/2026
SIGNATURE AND SEAL
APPLY TO ALL SHEETS AS NOTED BELOW:
SHEETS 9-18

12/1/2025
DATE



FULL SIZE PLANS HAVE BEEN PREPARED USING STANDARD ENGINEERING SCALES. REDUCED SIZED PLANS WILL NOT CONFORM TO STANDARD SCALES. IN MAKING MEASUREMENTS ON REDUCED PLANS, THE ABOVE SCALES MAY BE USED.

J.U.L.I.E.
JOINT UTILITY LOCATION INFORMATION FOR EXCAVATORS
1-800-892-0123 OR 811
MEADE ELECTRIC CO.
DISTRICT ONE ELECTRICAL MAINTENANCE CONTRACTOR
LOCATES IDOT ELECTRICAL EQUIPMENT AND UNDERGROUND CABLES: 773-287-7672

PROJECT ENGINEER: RODRIGO LEDEZMA, PE, PHONE (847-705-4580)
PROJECT MANAGER: J. ALAIN MIDY, PE, PHONE (847-221-3056)

CONTRACT NO. 80B46

GROSS LENGTH = 500 FT = 0.095 MI

NET LENGTH = 500 FT = 0.095 MI

PREPARED BY

GRÄEF

8501 W. Higgins Road, Suite 280
Chicago, Illinois 60631; (773) 399-0112

STATE OF ILLINOIS
DEPARTMENT OF TRANSPORTATION

SUBMITTED Dec 2nd 2025
Robert J. ... IR
REGIONAL ENGINEER

March 20 2026
Kevin Wood
ENGINEER OF DESIGN AND ENVIRONMENT

March 20 2026
Kevin Wood
DIRECTOR OF HIGHWAYS PROJECT IMPLEMENTATION

PRINTED BY THE AUTHORITY
OF THE STATE OF ILLINOIS

INDEX OF SHEETS

SHEET NO.	SHEET DESCRIPTION
1	COVER SHEET
2	INDEX OF SHEETS & GENERAL NOTES
3 - 5	SUMMARY OF QUANTITIES
6	TYPICAL SECTIONS
7	ROADWAY PLAN
8	DETOUR PLAN
9 - 18	STRUCTURAL PLANS - S.N. 099-0198
19	BD-32 BUTT JOINT AND HMA TAPER DETAILS
20	TC-10 TRAFFIC CONTROL AND PROTECTION FOR SIDE ROADS, INTERSECTIONS, AND DRIVEWAYS
21	TC-11 TYPICAL APPLICATIONS RAISED REFLECTIVE PAVEMENT MARKERS (SNOW-PLOW RESISTANT)
22	TC-13 DISTRICT ONE TYPICAL PAVEMENT MARKINGS
23	TC-17 TRAFFIC CONTROL DETAILS FOR FREEWAY SHOULDER CLOSURES AND PARTIAL RAMP CLOSURES
24	TC-21 DETOUR SIGNING FOR CLOSING STATE HIGHWAYS
25	TC-22 ARTERIAL ROAD INFORMATION SIGN

HIGHWAY STANDARDS

000001- 09	STANDARD SYMBOLS, ABBREVIATIONS AND PATTERNS
001001-02	AREAS OF REINFORCEMENT BARS
001006	DECIMAL OF AN INCH AND OF A FOOT
630001-13	STEEL PLATE BEAM GUARDRAIL
701006-05	OFF-RD OPERATIONS, 2L, 2W, 15' TO 24" FROM PAVEMENT EDGE
701301-04	LANE CLOSURE, 2L, 2W, SHORT TIME OPERATIONS
701311-03	LANE CLOSURE, 2L, 2W, MOVING OPERATIONS-DAY ONLY
701428-01	TRAFFIC CONTROL SETUP AND REMOVAL FREEWAY/EXPRESSWAY
701501-06	URBAN LANE CLOSURE, 2L, 2W, UNDIVIDED
701901- 11	TRAFFIC CONTROL DEVICES

GENERAL NOTES

- BEFORE STARTING ANY EXCAVATION, THE CONTRACTOR SHALL CALL "J.U.L.I.E." AT 1-800-892-0123 FOR FIELD LOCATIONS OF BURIED ELECTRIC, TELEPHONE, AND GAS FACILITIES. (48 HOURS NOTIFICATION IS REQUIRED).
- IDOT FACILITIES ARE NOT LOCATED BY JULIE OR DIGGER. IDOT ELECTRICAL FACILITIES INCLUDING ROADWAY LIGHTING, FIBER OPTIC, ITS EQUIPMENT, TRAFFIC SIGNAL AND PUMP STATION FACILITIES ARE LOCATED BY THE DEPARTMENT'S ELECTRICAL MAINTENANCE CONTRACTOR. AS OF THE LETTING DATE, CONTACT THE MEADE ELECTRIC COMPANY AT 773-287-7672.
- THE CONTRACTOR SHALL COORDINATE CONSTRUCTION ACTIVITIES WITH UTILITY COMPANIES, PACE BUSES AND WILL COUNTY.
- THE CONTRACTOR WILL NOT BE ALLOWED TO SET UP A YARD OR FIELD OFFICE ON STATE PROPERTY WITHOUT WRITTEN PERMISSION FROM THE DEPARTMENT.
- BUTT JOINTS WILL BE INSTALLED AT THE ENDS OF ALL RESURFACING (WHERE RESURFACING MEETS EXISTING PAVEMENT), IN ACCORDANCE WITH THE DISTRICT ONE "BUTT JOINT AND HMA TAPER DETAILS" (BD-32).
- IT SHALL BE THE CONTRACTOR'S RESPONSIBILITY TO VERIFY ALL DIMENSIONS AND CONDITIONS EXISTING IN THE FIELD PRIOR TO CONSTRUCTION AND ORDERING OF MATERIALS.
- THE CONTRACTOR SHALL CONTACT KALPANA KANNAN-HOSADURGA, THE DISTRICT ONE TRAFFIC CONTROL SUPERVISOR AT KALPANA.KANNAN-HOSADURGA@ILLINOIS.GOV A MINIMUM OF 72 HOURS IN ADVANCE OF BEGINNING WORK.
- FOR ALL PAVEMENT WORK OUTSIDE LIMITS OF BRIDGE APPROACH PAVEMENT, ALL REFERENCES IN THE HIGHWAY STANDARDS AND STANDARD SPECIFICATIONS FOR REINFORCEMENT, DOWEL BARS AND TIE BARS IN PAVEMENT SHALL BE EPOXY COATED UNLESS NOTED ON THE PLANS.
- RAISED REFLECTIVE PAVEMENT MARKERS ARE TO BE USED AS SHOWN ON THE DISTRICT ONE DETAIL TC-11 "TYPICAL APPLICATIONS-RAISED REFLECTIVE PAVEMENT MAKERS (SNOW-PLOW RESISTANT)" SHOWN IN PLAN. RAISED REFLECTIVE PAVEMENT MARKERS TO ONLY BE INSTALLED ON HMA SURFACE SECTION OF PROJECT.
- NO REMOVAL OF TREES MEASURING THREE (3) INCHES IN DIAMETER OR GREATER AT BREST HEIGHT SHALL OCCUR BETWEEN APRIL 1 AND OCTOBER 31 OF ANY GIVEN YEAR TO CONSERVE THE THREATENED AND ENDANGERED NORTHERN LONG-EARED BAT (NLEB).
- BEFORE BEGINNING ANY WORK, THE CONTRACTOR SHALL RETAIN AND RECORD, FOR FUTURE REFERENCE, ALL EXISTING PAVEMENT MARKING LINES (AND RAISED REFLECTIVE PAVEMENT MARKERS) IN ORDER THAT THESE LOCATIONS BE RE-ESTABLISHED FOR STRIPING. EXACT LOCATIONS OF ALL PAVEMENT MARKINGS SHALL BE AS DIRECTED BY THE ENGINEER.
- THE ENGINEER SHALL CONTACT ERIC CAMPOS, AREA TRAFFIC FIELD ENGINEER, AT 815-485-6475 A MINIMUM OF TWO (2) WEEKS PRIOR TO THE PLACEMENT OF PERMANENT PAVEMENT MARKINGS.
- WILL COUNTY DOT (WCDOT) MUST BE GIVEN 2 WEEKS OF NOTICE PRIOR TO CLOSING THE COUNTY HIGHWAY.

MODEL: 0164622 Genncle4 [Sheet]
FILE NAME: X:\OH\2025\20250016-4\Design\CADD\Drawings\SheetsPlan\180B46-shr-gemote.dgn

 <p>8501 W. Higgins Road Suite 280 Chicago, Illinois 60634 (773) 399-082</p>	USER NAME = 2321	DESIGNED -	REVISED -	<p align="center">STATE OF ILLINOIS DEPARTMENT OF TRANSPORTATION</p>	<p align="center">INDEX OF SHEETS & GENERAL NOTES</p>			C.H. RTE.	SECTION	COUNTY	TOTAL SHEETS	SHEET NO.
	PLOT DATE = 1/30/2026 10:11:43 AM	DRAWN -	REVISED -					38	(99-SHB-3) BDR, BJR 25	WILL	25	2
	CHECKED -	REVISED -		SCALE: SHEET 1 OF 1 SHEETS STA. TO STA.			CONTRACT NO. 80B46					
	DATE -	REVISED -					ILLINOIS FED. AID PROJECT					

				CONSTRUCTION CODE
CODE NO.	ITEM	UNIT	TOTAL QUANTITY	187TH STREET (S.N. 099-0198) 0059 NHPP 90% FED 10% STATE
40600290	BITUMINOUS MATERIALS (TACK COAT)	POUND	352	352
40600370	LONGITUDINAL JOINT SEALANT	FOOT	183	183
40600982	HOT-MIX ASPHALT SURFACE REMOVAL - BUTT JOINT	SQ YD	179	179
40604062	HOT-MIX ASPHALT SURFACE COURSE, IL-9.5, MIX "D", N70	TON	50	50
44000150	HOT-MIX ASPHALT SURFACE REMOVAL, 1/4"	SQ YD	121	121
44213200	SAW CUTS	FOOT	118	118
45000120	RELIEF JOINT 3"	FOOT	109	109
48203004	HOT-MIX ASPHALT SHOULDERS, 1 3/4"	SQ YD	34	34
48203029	HOT-MIX ASPHALT SHOULDERS, 8"	SQ YD	58	58
50102400	CONCRETE REMOVAL	CU YD	1.3	1.3
50300300	PROTECTIVE COAT	SQ YD	1,238	1,238

MODEL: S00001
FILE NAME: X:\CH\2025\2025001\6-44\Design\CADD\Drawings\Sheets\Plan\180B46-shr-S00.dgn

GRAEF
8501 W. Higgins Road, Suite 280
Chicago, Illinois 60634 (773) 399-082

USER NAME = 2321
DESIGNED -
DRAWN -
CHECKED -
PLOT DATE = 1/30/2026 10:11:44 AM
DATE -

REVISÉD -
REVISÉD -
REVISÉD -
REVISÉD -

**STATE OF ILLINOIS
DEPARTMENT OF TRANSPORTATION**

SUMMARY OF QUANTITIES

SCALE: SHEET 1 OF 4 SHEETS STA. TO STA.

C.H. RTE.	SECTION	COUNTY	TOTAL SHEETS	SHEET NO.
38	(99-SHB-3) BDR, BJR 25	WILL	25	3
CONTRACT NO. 80B46				
ILLINOIS FED. AID PROJECT				

				CONSTRUCTION CODE
CODE NO.	ITEM	UNIT	TOTAL QUANTITY	187TH STREET (S.N. 099-0198) 0059 NHPP 90% FED 10% STATE
* 63000001	STEEL PLATE BEAM GUARDRAIL, TYPE A, 6 FOOT POSTS	FOOT	100	100
63200310	GUARDRAIL REMOVAL	FOOT	100	100
67100100	MOBILIZATION	L SUM	1	1
70107025	CHANGEABLE MESSAGE SIGN	CAL DA	28	28
* 78000200	THERMOPLASTIC PAVEMENT MARKING - LINE 4"	FOOT	724	724
* 78009004	MODIFIED URETHANE PAVEMENT MARKING - LINE 4"	FOOT	1,720	1,720
* 78100100	RAISED REFLECTIVE PAVEMENT MARKER	EACH	12	12
78300200	RAISED REFLECTIVE PAVEMENT MARKER REMOVAL	EACH	32	32
78300202	PAVEMENT MARKING REMOVAL - WATER BLASTING	SQ FT	117	117
X4404262	SHOULDER REMOVAL (SPECIAL)	SQ YD	59	59
X5030250	BRIDGE DECK GROOVING (LONGITUDINAL)	SQ YD	944	944
X5230172	DRAINAGE SCUPPERS TO BE ADJUSTED	EACH	6	6
X6700407	ENGINEER'S FIELD OFFICE, TYPE A (D1)	CAL MO	6	6
X7010216	TRAFFIC CONTROL AND PROTECTION (SPECIAL)	L SUM	1	1

* SPECIALTY ITEM

MODEL: S00402
FILE NAME: X:\CH\2025\20250016-44\Design\CADD\Drawings\SheetsPlan\180B46-sh-S00.dgn

GRAEF
8501 W. Higgins Road Suite 280
Chicago, Illinois 60634 (773) 399-082

USER NAME = 2321
PLOT DATE = 1/30/2026 10:11:44 AM

DESIGNED -
DRAWN -
CHECKED -
DATE -

REVISED -
REVISED -
REVISED -
REVISED -

**STATE OF ILLINOIS
DEPARTMENT OF TRANSPORTATION**

SUMMARY OF QUANTITIES

SCALE: SHEET 2 OF 4 SHEETS STA. TO STA.

C.H. RTE.	SECTION	COUNTY	TOTAL SHEETS	SHEET NO.
38	(99-SHB-3) BDR, BJR 25	WILL	25	4
CONTRACT NO. 80B46				
ILLINOIS FED. AID PROJECT				

				CONSTRUCTION CODE
CODE NO.	ITEM	UNIT	TOTAL QUANTITY	187TH STREET (S.N. 099-0198) 0059 NHPP 90% FED 10% STATE
X7011015	TRAFFIC CONTROL AND PROTECTION (EXPRESSWAYS)	L SUM	1	1
X7200061	TEMPORARY INFORMATION SIGNING	SQ FT	52	52
X8900104	TEMPORARY TRAFFIC SIGNAL TIMING	EACH	2	2
53101410	BRIDGE DECK LATEX CONCRETE OVERLAY, 2 3/4 INCHES	SQ YD	1,238	1,238
53101002	BRIDGE DECK SCARIFICATION 3/4"	SQ YD	1,238	1,238
53212754	STRUCTURAL REPAIR OF CONCRETE (DEPTH EQUAL TO OR LESS THAN 5 INCHES)	SQ FT	300	300
53016002	DECK SLAB REPAIR (FULL DEPTH, TYPE II)	SQ YD	1	1
Z0029090	DIAMOND GRINDING (BRIDGE SECTION)	SQ YD	1,238	1,238
52000037	PREFORMED JOINT SEAL, 3"	FOOT	118	118
50157300	PROTECTIVE SHIELD	SQ YD	811	811
58700300	CONCRETE SEALER	SQ FT	3,087	3,087
Z0001800	APPROACH SLAB REPAIR (PARTIAL DEPTH)	SQ YD	4	4
Z0041895	POLYMER CONCRETE	CU FT	20	20

MODEL: S00403
 FILE NAME: X:\CH\2025\20250016-44\Design\CADD\Drawings\Sheets\Plan\180B46-sh-S00.dgn



USER NAME = 2321
 DESIGNED -
 DRAWN -
 CHECKED -
 PLOT DATE = 1/30/2026 10:11:45 AM
 DATE -

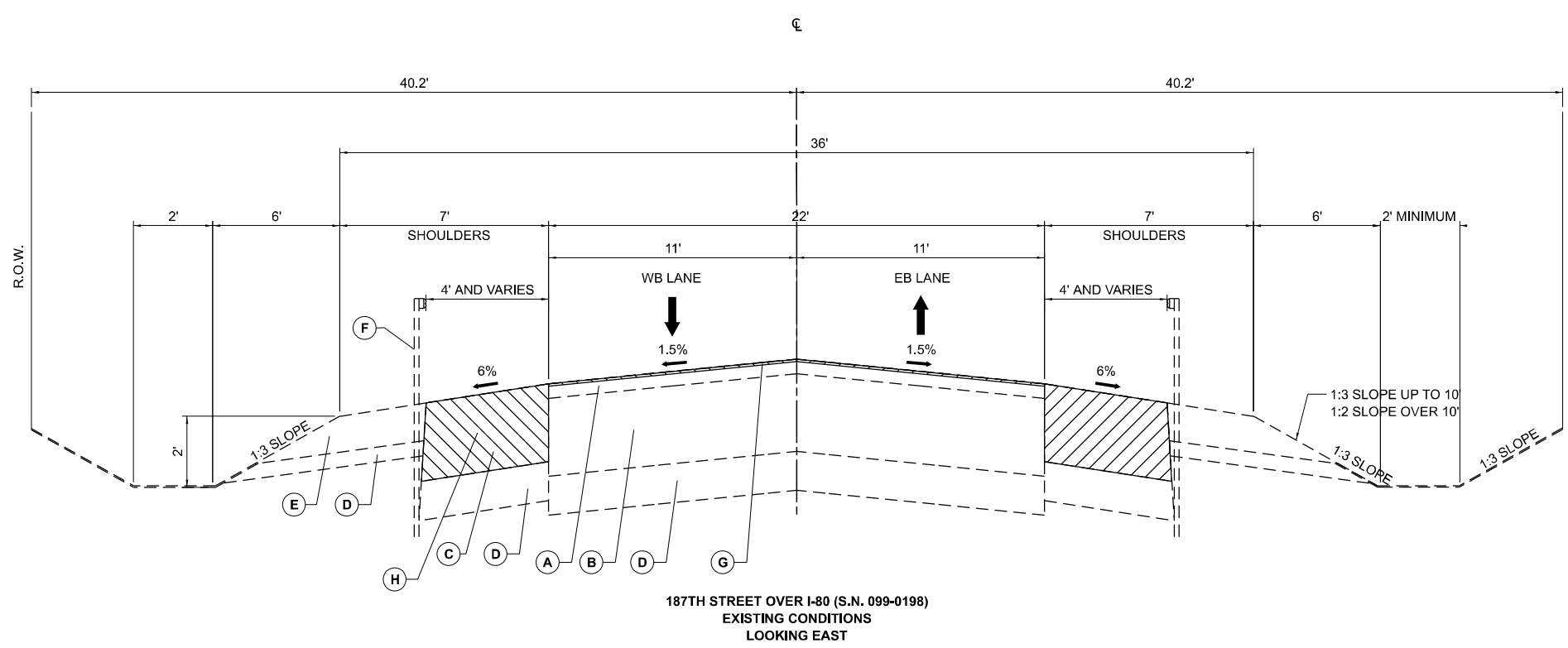
REVISED -
 REVISED -
 REVISED -
 REVISED -

**STATE OF ILLINOIS
 DEPARTMENT OF TRANSPORTATION**

SUMMARY OF QUANTITIES

SCALE: SHEET 3 OF 4 SHEETS STA. TO STA.

C.H. RTE.	SECTION	COUNTY	TOTAL SHEETS	SHEET NO.
38	(99-SHB-3) BDR, BJR 25	WILL	25	5
CONTRACT NO. 80B46			ILLINOIS FED. AID PROJECT	



187TH STREET OVER I-80 (S.N. 099-0198)
EXISTING CONDITIONS
LOOKING EAST

EXISTING LEGEND

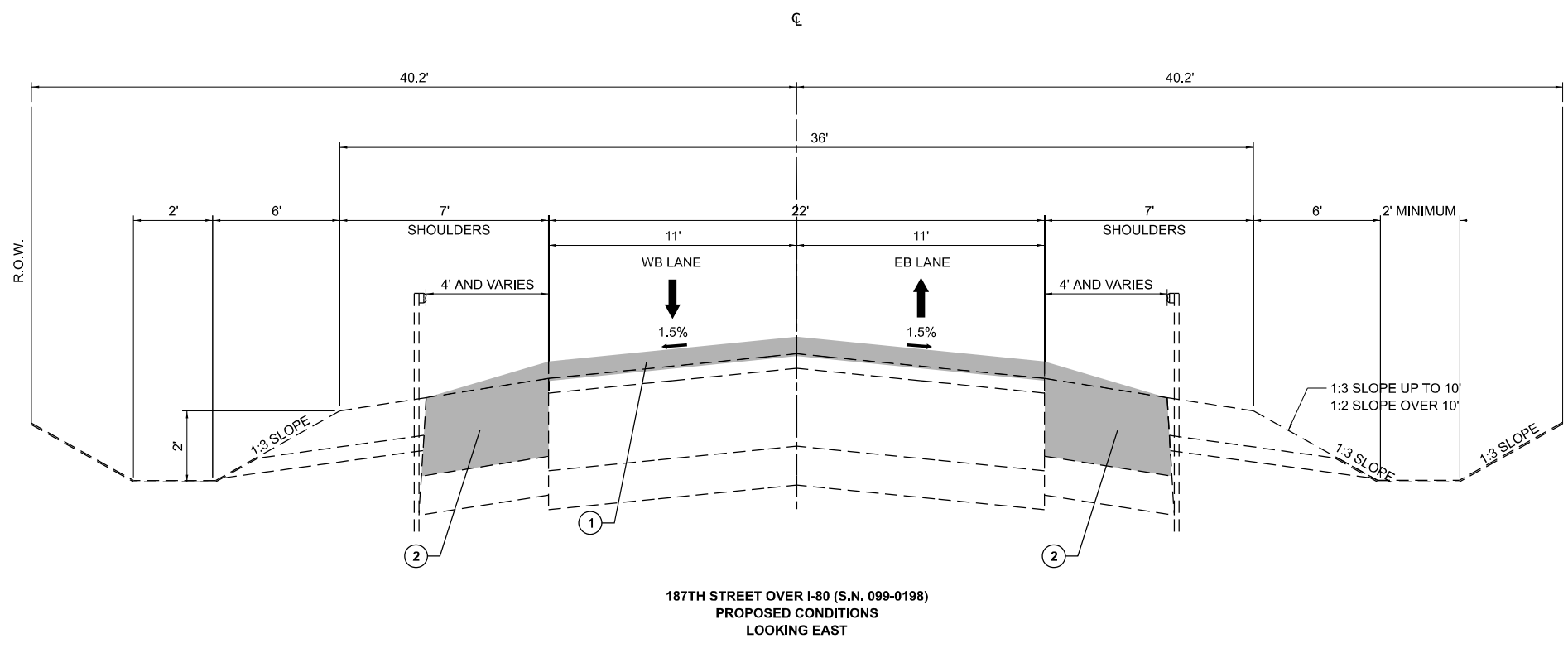
- (A) — EXISTING BITUMINOUS CONCRETE SURFACE COURSE MIXTURE D. CLASS 1, 1.5"
- (B) — EXISTING BITUMINOUS BASE COURSE, 8"
- (C) — EXISTING BITUMINOUS SHOULDER, 8" WITH SECTIONS OF AGGREGATE SHOULDER
- (D) — EXISTING AGGREGATE TYPE B, 4"
- (E) — EXISTING BITUMINOUS SHOULDER STABILIZATION, 6 IN
- (F) — EXISTING GUARDRAIL
- (G) — HMA SURFACE REMOVAL 1/4"
- (H) — SHOULDER REMOVAL (SPECIAL)

PROPOSED LEGEND

- (1) — HOT-MIX ASPHALT SURFACE COURSE, IL-9.5, MIX "D", N70, 2"
- (2) — HOT-MIX ASPHALT SHOULDERS, 8"

NOTES

1. 100' OF GUARDRAIL REMOVAL AND REPLACEMENT HAS BEEN PROVIDED FOR USE AT DETERIORATED OR DAMAGED LOCATIONS AS DETERMINED BY THE RESIDENT ENGINEER.
2. THE LONGITUDINAL JOINT SEALANT SHALL BE PLACED UNDER THE HMA SURFACE MIX.



187TH STREET OVER I-80 (S.N. 099-0198)
PROPOSED CONDITIONS
LOOKING EAST

HOT-MIX ASPHALT MIXTURE REQUIREMENTS

MIXTURE TYPE	AIR VOIDS @ N DES	QUALITY MANAGEMENT PROGRAM (QMP)
PAVEMENT RESURFACING		
HOT-MIX ASPHALT SURFACE COURSE, IL-9.5, MIX "D", N70	4% @ 70 GYR.	QC/QA
SHOULDER RESURFACING (HOT-MIX ASPHALT SHOULDERS, 1 3/4")		
HOT-MIX ASPHALT SURFACE COURSE, IL-9.5, MIX "D", N70	4% @ 70 GYR.	QC/QA
SHOULDER RECONSTRUCTION (HOT-MIX ASPHALT SHOULDERS, 8")		
HOT-MIX ASPHALT BINDER COURSE, IL-19.0, N70, 6 1/4"	4% @ 70 GYR.	QC/QA
HOT-MIX ASPHALT SURFACE COURSE, MIX "D", IL-9.5, N70, 1 3/4"	4% @ 70 GYR.	QC/QA
QMP DESIGNATION: QUALITY CONTROL / QUALITY ASSURANCE (QC/QA); QUALITY CONTROL FOR PERFORMANCE (QCP); PAY FOR PERFORMANCE (PFP)		

THE UNIT WEIGHT USED TO CALCULATE ALL HMA SURFACE MIXTURES IS 112 LBS/SQ YD/IN.

THE "AC TYPE" FOR POLYMERIZED HMA MIXES SHALL BE "SBS/SBR PG 76-22" AND FOR NON-POLYMERIZED HMA THE "AC TYPE" SHALL BE "PG 64-22" UNLESS MODIFIED BY RECLAIMED MATERIALS SPECIFICATIONS.

MODEL: MOT Typical Sections
FILE NAME: X:\OH\2025\2025001\6-41\Design\CADD\Drawings\Sheets\Plan\180B46-shr-Typical.dgn



USER NAME = 2321	DESIGNED -	REVISED -
	DRAWN -	REVISED -
	CHECKED -	REVISED -
PLOT DATE = 1/30/2026 10:11:45 AM	DATE -	REVISED -




**STATE OF ILLINOIS
DEPARTMENT OF TRANSPORTATION**

**TYPICAL SECTIONS
187TH ST. (C.H. 38/MAPLE RD.)**

SCALE: SHEET 1 OF 1 SHEETS STA. TO STA.

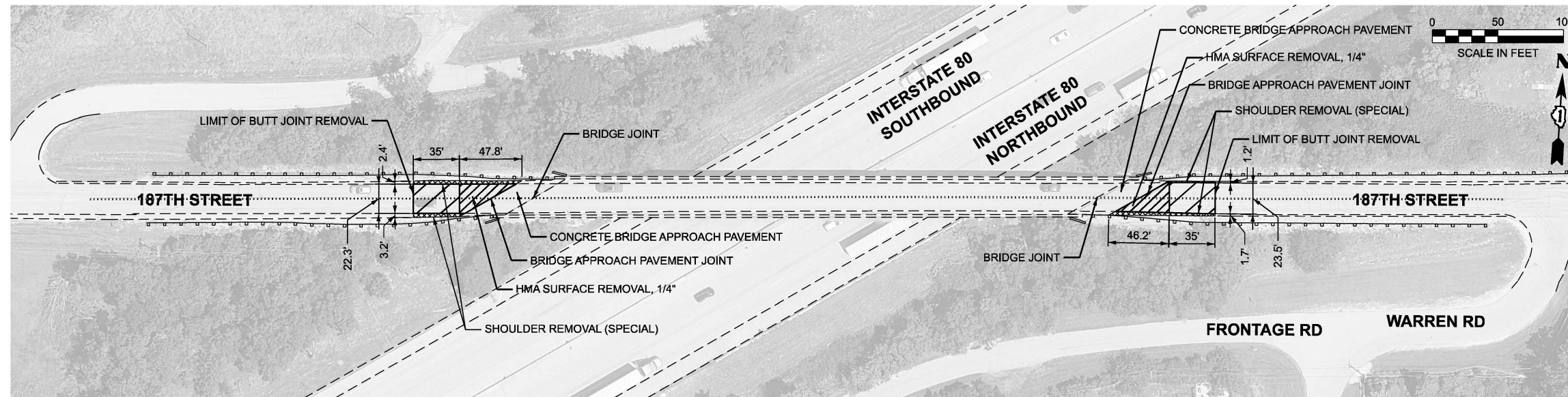
C.H. RTE.	SECTION	COUNTY	TOTAL SHEETS	SHEET NO.
38	(99-SHB-3) BDR, BJR 25	WILL	25	6
CONTRACT NO. 80B46				
ILLINOIS FED. AID PROJECT				

REMOVAL LEGEND

-  — HOT-MIX ASPHALT SURFACE REMOVAL - BUTT JOINT
-  — HMA SURFACE REMOVAL, 1/4"
-  — SHOULDER REMOVAL (SPECIAL)




REMOVAL NOTES

1. CONTRACTOR TO MEASURE LANE LINES, TAPERS, AND HATCHING BEFORE CONSTRUCTION BEGINS.
2. 100' OF GUARDRAIL REMOVAL AND REPLACEMENT HAS BEEN PROVIDED FOR USE AT DETERIORATED OR DAMAGED LOCATIONS AS DETERMINED BY THE RESIDENT ENGINEER.
3. ALL PAVEMENT MARKINGS SHALL BE REMOVED VIA WATERBLASTING AND ALL RAISED REFLECTIVE PAVEMENT MARKERS SHALL BE REMOVED BEFORE PLACING ANY LATEX OVERLAYS OR HOT-MIX ASPHALT ON THOSE AREAS.





REMOVAL PLAN

PROPOSED LEGEND



-  — HMA SURFACE COURSE, IL-9.5, MIX "D", N70
-  — HOT-MIX ASPHALT SHOULDERS, 8"
-  — HOT-MIX ASPHALT SHOULDERS, 1 3/4"

PROPOSED PAVEMENT MARKINGS

HMA PAVEMENT

-  — THERMOPLASTIC PAVEMENT MARKING - LINE 4" (WHITE, SOLID)
-  — THERMOPLASTIC PAVEMENT MARKING - LINE 4" (YELLOW, DOUBLE SOLID, 11" C-C)

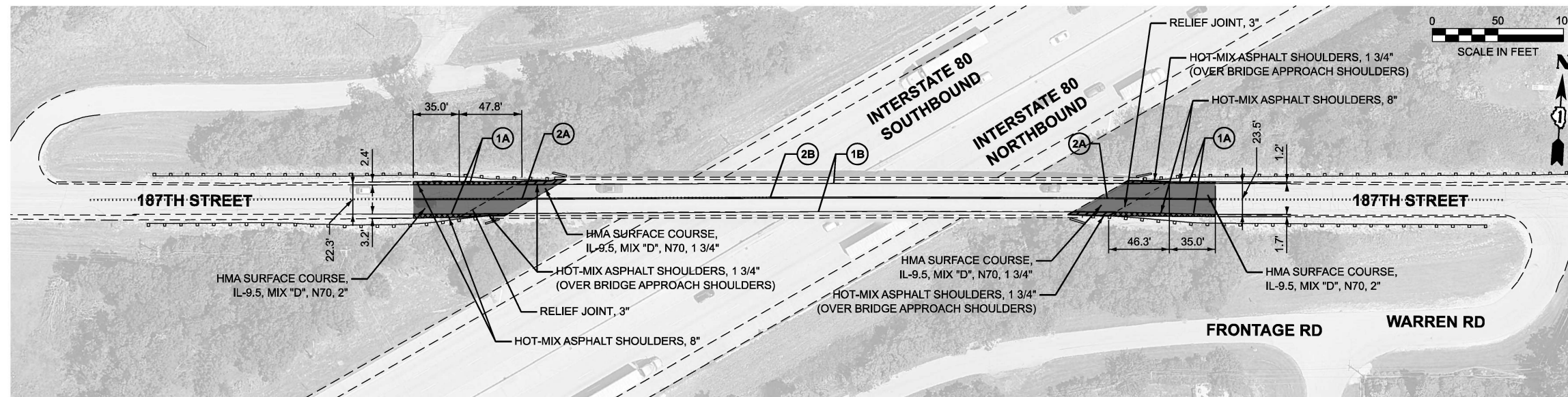
CONCRETE BRIDGE DECK AND JOINTS

-  — MODIFIED URETHANE PAVEMENT MARKING - LINE 4" (WHITE, SOLID)
-  — MODIFIED URETHANE PAVEMENT MARKING - LINE 4" (YELLOW, DOUBLE SOLID, 11" C-C)

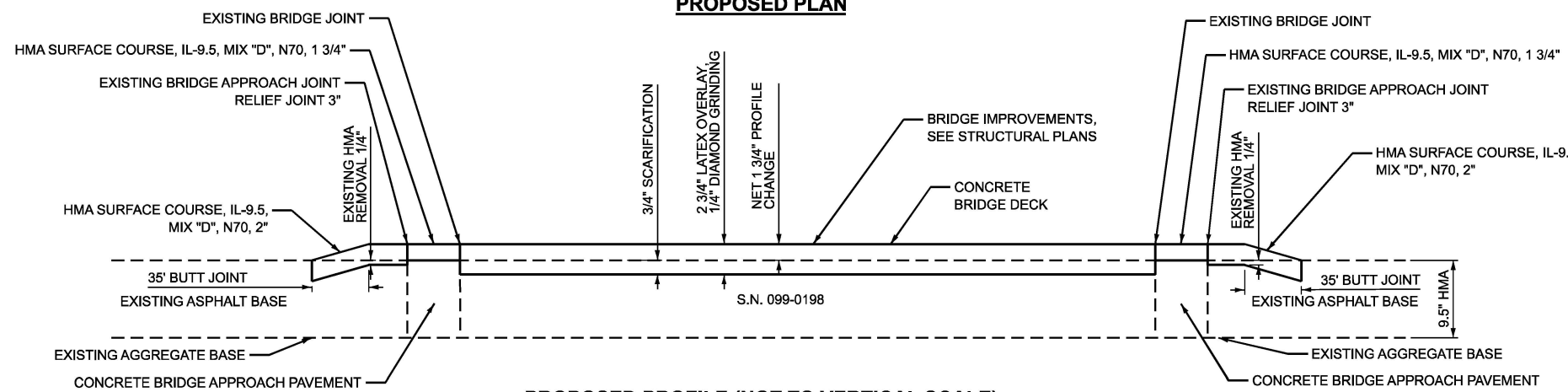
NO RAISED REFLECTIVE PAVEMENT MARKERS TO BE INSTALLED ON BRIDGE DECK

PROPOSED NOTES

1. MINIMUM OF 20' LENGTH PER 1" CHANGE IN DEPTH FOR ALL BUTT JOINTS.
2. SEE STRUCTURAL PLANS FOR S.N. 099-0198 BRIDGE IMPROVEMENTS.
3. INSTALL ALL PAVEMENT MARKINGS ACCORDING TO IDOT D1 DETAIL TC-13



PROPOSED PLAN

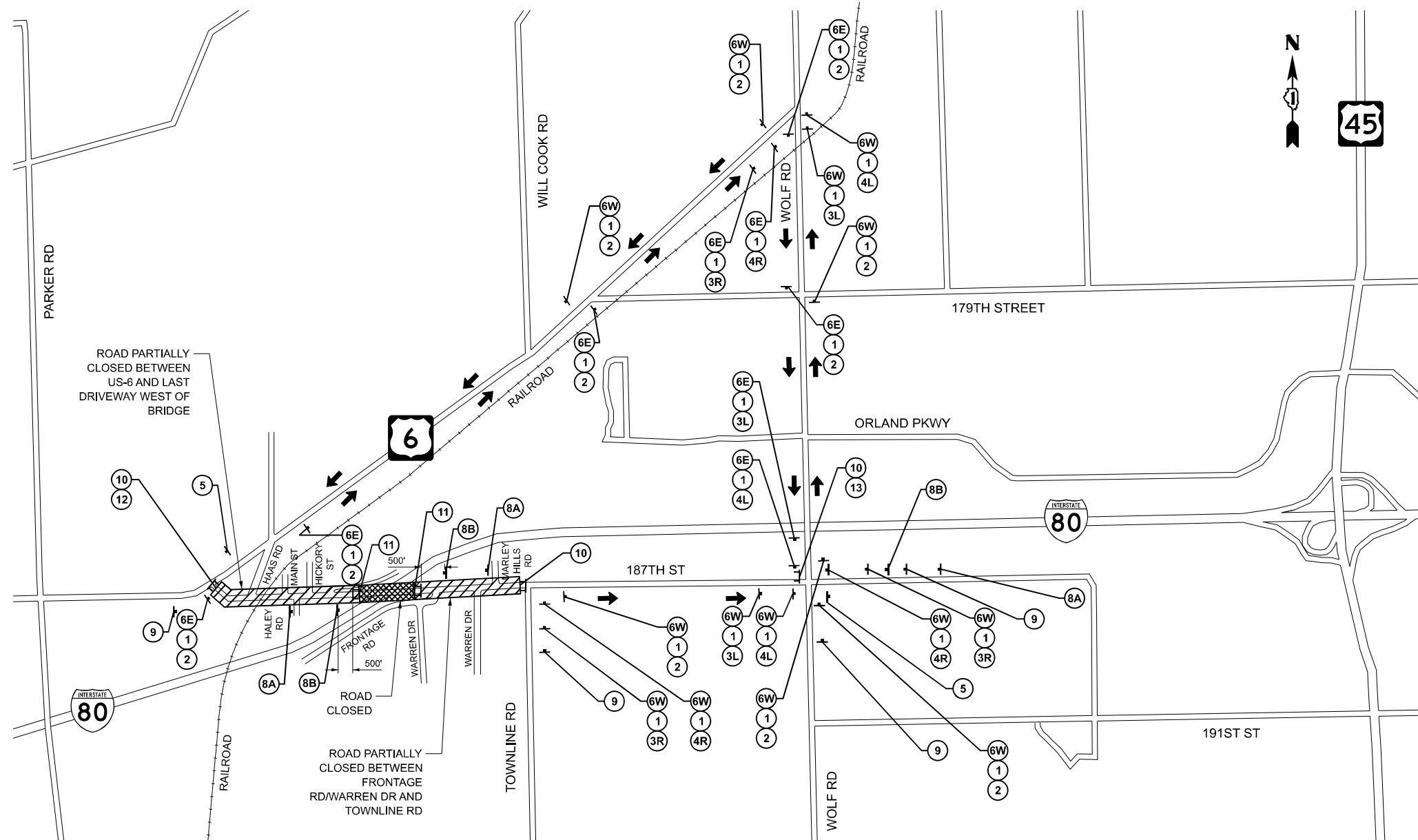


PROPOSED PROFILE (NOT TO VERTICAL SCALE)

MODEL: PLAN (Sheet) FILE NAME: X:\01\2025\20250016-04\Design\CADD\Drawings\Sheets\Plan\180B46-shr-Plan.dgn

USER NAME = 2321	DESIGNED -	REVISED -
	DRAWN -	REVISED -
	CHECKED -	REVISED -
PLOT DATE = 1/30/2026 10:11:47 AM	DATE -	REVISED -

C.H. RTE.	SECTION	COUNTY	TOTAL SHEETS	SHEET NO.
38	(99-SHB-3) BDR,BJR 25	WILL	25	7
CONTRACT NO. 80B46				
ILLINOIS FED. AID PROJECT				



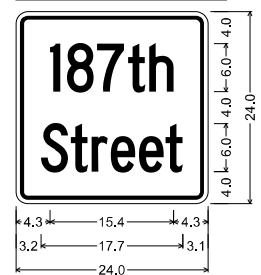
LEGEND

- ┆ — PROPOSED TEMPORARY SIGNAGE
- ➔ — PROPOSED DETOUR ROUTE
- ⚡ — FLASHING AMBER LIGHT
- ① **187th Street** SPECIAL-1-2424
- ② **DETOUR** (up arrow) M4-9(O)-3024
- ③L **DETOUR** (left arrow) M4-9(O)-3024
- ④L **DETOUR** (left arrow) M4-9(O)-3024
- ⑤ **END DETOUR** M4-8a(O)-2418
- ⑥E **EAST** M3-2P(O)-2412
- ⑦L **DETOUR** (left arrow) M6-1PL(O)-2115
- ③R **DETOUR** (right arrow) M4-9(O)-3024
- ④R **DETOUR** (right arrow) M4-9(O)-3024
- ⑥W **WEST** M3-4P(O)-2412
- ⑦R **DETOUR** (right arrow) M6-1PR(O)-2115
- ⑧A **ROAD CLOSED AHEAD** W20-3(O)-48
- ⑧B **ROAD CLOSED 500 FT** W20-3(O)-48
- ⑨ **DETOUR AHEAD** W20-2(O)-48
- ⑩ **ROAD CLOSED TO THRU TRAFFIC** R11-4-6036
- ⑪ **ROAD CLOSED** R11-2-4830
- ⑬ **BRIDGE OUT** R11-2b-4830
- ⑫ **DETOUR** (left arrow) R11-2-4830
- ⑬ **DETOUR** (right arrow) R11-2-4830

DETOUR NOTES

1. ALL SIGNING MUST BE IN ACCORDANCE WITH THE APPLICABLE PROVISIONS OF THE STATE OF ILLINOIS "STANDARD SPECIFICATIONS FOR ROAD AND BRIDGE CONSTRUCTION", LATEST EDITION, THE DETAILS IN THESE PLANS, THE LATEST EDITION OF THE IDOT BUREAU OF DESIGN AND ENVIRONMENT HIGHWAY STANDARDS, AND THE LATEST EDITION OF THE STATE OF ILLINOIS "MANUAL ON UNIFORM TRAFFIC CONTROL DEVICES".
2. PROPOSED DETOUR SIGNAGE MUST BE COVERED OR REMOVED WHEN NOT REQUIRED DURING A SPECIFIC STAGE OF CONSTRUCTION.
3. THE CONTRACTOR MUST CONDUCT THE WORK IN SUCH A MANNER THAT EMERGENCY VEHICLES WILL HAVE ACCESS TO THE AREA AT ALL TIMES. THE CONTRACTOR MUST ALWAYS MAINTAIN ACCESS TO THE PARTIALLY CLOSED ROADS TO LOCAL TRAFFIC.
4. THE CONTRACTOR SHALL NOT OBSTRUCT ANY EXISTING SIGNAGE WITH PLACEMENT OF DETOUR SIGNAGE UNLESS IT CONFLICTS WITH DETOUR SIGNAGE.
5. TEMPORARY TRAFFIC SIGNAL TIMING TO BE IMPLEMENTED ALONG THE DETOUR AT THE FOLLOWING TWO (2) TRAFFIC SIGNALS:
 - US ROUTE 6 AND WOLF RD
 - 187TH STREET AND WOLF RD
6. A MINIMUM OF FOURTEEN (14) DAYS IN ADVANCE OF THE CONSTRUCTION ON HALSTED ST, THE CONTRACTOR SHALL PLACE ONE (1) CHANGEABLE MESSAGE SIGN AT EACH END OF THE PROJECT ALONG THE ROUTE AS DIRECTED AND AT A LOCATION DESIGNATED BY THE ENGINEER TO INFORM MOTORISTS OF THE UPCOMING CONSTRUCTION. THE MESSAGE SHALL BE APPROVED BY THE ENGINEER. THIS WORK IS TO BE PAID FOR AT THE CONTRACT UNIT PRICE PER CALENDAR DAY FOR CHANGEABLE MESSAGE SIGN.
7. SEE IDOT D1 DETAIL TC-21 FOR TYPICAL SIGN SPACING.

SPECIAL-1 DETAIL



BLACK SERIES C LEGEND ON ORANGE RETROREFLECTIVE BACKGROUND

DIMENSIONS LISTED IN INCHES

**STATE OF ILLINOIS
DEPARTMENT OF TRANSPORTATION**

DETOUR PLAN
187TH ST. (C.H. 38/MAPLE RD.) OVER I-80 (S.N. 099-0198)

C.H. RTE.	SECTION	COUNTY	TOTAL SHEETS	SHEET NO.
38	(99-SHB-3) BDR, BJR 25	WILL	25	8
CONTRACT NO. 80B46				
ILLINOIS FED. AID PROJECT				

MODEL: PLAN | Sheet1
 FILE NAME: X:\CH\2025\2025001\6-41\Design\CADD\Drawings\Sheets\Plan\180B46-sh1-detour.dgn

GR&EF
850 W. Higgins Road Suite 280
Chicago, Illinois 60634 (773) 399-082

USER NAME = 2321	DESIGNED - JPC	REVISED -
	DRAWN - JPC	REVISED -
	CHECKED - JSO	REVISED -
PLOT DATE = 1/30/2026 10:11:50 AM	DATE -	REVISED -

SCALE: N/A SHEET 1 OF 1 SHEETS STA. TO STA.

Existing Structure: SN 099-0198 was built in 1966 and redecked in 1999. The structure has a back to back length of 431'-4⁵/₈" and an out-to-out width of 29'-6¹/₄". The superstructure consists of a 7³/₈" thick reinforced concrete slab supported on Four Span welded plate girder.

Traffic shall be detoured during rehabilitation.

No Salvage:

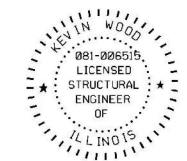
LOADING MS18
Allow 25#/sq. ft for future wearing surface

DESIGN SPECIFICATIONS
1992 AASHTO Standard Specifications
with 1993 and 1994 Interims

DESIGN STRESSES

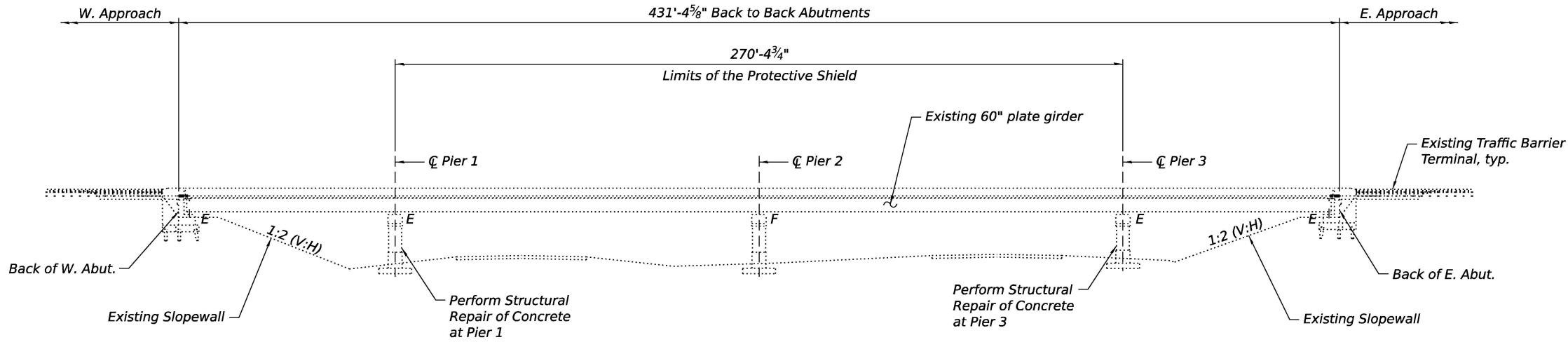
FIELD UNITS (EXIST. CONST.)
 $f_c = 3,500$ psi (Superstructure)
 $f_c = 800$ psi (Substructure)
 $f_y = 60,000$ psi (Superstructure Reinforcement)
 $f_y = 20,000$ psi (Substructure Reinforcement)
 $f_y = 18,000$ psi (1954 Struct. Steel)
 $f_y = 20,000$ psi (2001 Struct. Steel)

FIELD UNITS (NEW CONST.)
 $f_c = 4,000$ psi
 $f_y = 60,000$ psi (Reinforcement)

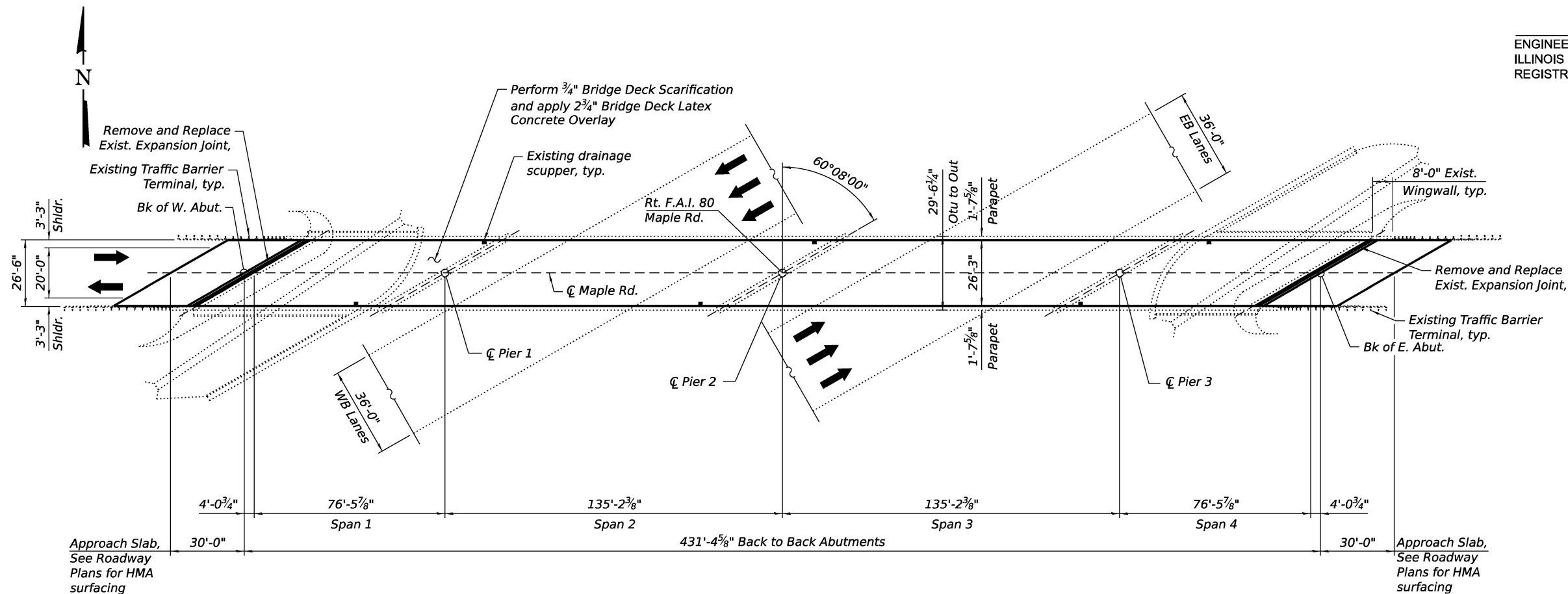


Kevin Wood

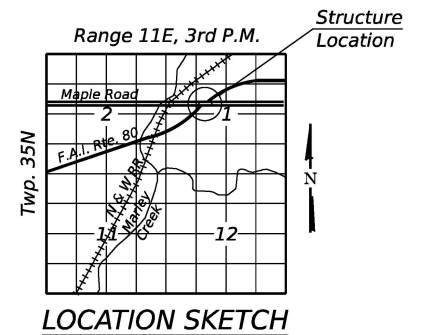
ENGINEER FULL NAME: KEVIN WOOD DATE: 12-1-2025
 ILLINOIS REGISTERED LICENSE NO. 081-006515
 REGISTRATION EXPIRES 11-30-2026



ELEVATION



PLAN



LOCATION SKETCH

GENERAL PLAN & ELEVATION
CH-38A (MAPLE ROAD)
OVER F.A.I. RTE. 80
SECTION (99-5HB-3) BDR,BJR 25
WILL COUNTY
STRUCTURE NO. 099-0198

MODEL: Default
 FILE NAME: X:\OH\2025\20250016-04\Design\CADD\Structures\Sheets\Plan\SN-099-0198-0990198-80B46-001-GPE.dgn
 3/12/2026 10:23:23 AM



USER NAME =	DESIGNED - BB	REVISIONS -
	CHECKED - CG	REVISIONS -
PLOT SCALE =	DRAWN - DCP	REVISIONS -
PLOT DATE =	CHECKED - SH	REVISIONS -

STATE OF ILLINOIS
DEPARTMENT OF TRANSPORTATION

SHEET 1 OF 10 SHEETS

F.A.I. RTE.	SECTION	COUNTY	TOTAL SHEETS	SHEET NO.
80	(99-5HB-3) BDR,BJR 25	WILL	25	9
CONTRACT NO. 80B46			ILLINOIS FED. AID PROJECT	

GENERAL NOTES:

1. Plan dimensions and details relative to the existing structure have been taken from existing plans and are subject to nominal construction variations. The Contractor shall field verify existing dimensions and details affecting new construction and make necessary approved adjustments prior to construction or ordering of materials. Such variations shall not be cause for additional compensation for a change in scope of the work, however, the Contractor will be paid for the quantity actually furnished at the unit price bid for the work.
2. The Contractor shall use extreme care during the work so as not to damage the steel girder.
3. Joint openings shall be adjusted according to Article 520.04 of the Std. Specs. when replacing the joint at an ambient temperature other than 50°F.
4. The Concrete Sealer shall be applied to the existing parapets and Protective Coat on the deck latex overlay where specified after it has properly cured.
5. The minimum thickness of Concrete Overlay shall be 2¾" and varies as required to adjust for the existing profile grade and beam camber.
6. The Contractor needs to use extra care with the existing paint coating on structural steel girders and other steel elements. Any damage to the paint coatings caused by the Contractor will be repaired at the Contractor's expense.
7. Areas of deck repairs shown are estimated. The Engineer will determine the actual limits of deck repairs in the field.
8. Joint openings shall be adjusted according to Article 520.04 of the Standard Specifications when installing the preformed joint seal at an ambient temperature other than 50°F.
9. All new structural steel used for drainage scupper adjustments shall conform to AASHTO M 270 Grade 36, unless otherwise noted.

INDEX OF SHEETS

1. General Plan and Elevation
2. General Data
3. Bridge Deck Overlay and Repairs
4. Approach Slab Repairs
5. Drainage Adjustment Details
6. Expansion Joint Details
7. Pier 1 Repairs
8. Pier 3 Repairs
9. Existing Plan
10. Existing Plan

SCOPE OF WORK

1. Install the Protective Shield within the limits shown on the plans.
2. Scarify ¾" from the bridge deck.
3. Remove and reconstruct expansion joints at west and east abutments, and install Preformed Joint Seals with Polymer Concrete Nosing.
4. Perform concrete repairs of the approach slab.
5. Apply a 2¾" Bridge Deck Latex Concrete Overlay on the bridge deck and perform smoothness grinding.
6. Apply waterproofing membrane and variable thickness HMA overlay over Approach Slabs to account for profile change (See Roadway Plans).
7. Apply Protective Coat to the reconstructed transverse expansion joints, new latex concrete overlay and Concrete Sealer on the front faces and tops of parapets.
8. Adjust drainage scuppers.
9. Perform Structural Repair of Concrete to substructure units where shown.

TOTAL BILL OF MATERIAL

ITEM	UNIT	SUPER	SUB	TOTAL
Concrete Removal	Cu Yd	1.3	-	1.3
Protective Shield	Sq Yd	811	-	811
Protective Coat	Sq Yd	1,238	-	1,238
Preformed Joint Seal, 3"	Foot	118	-	118
Deck Slab Repair (Full Depth Type II)	Sq Yd	1	-	1
Bridge Deck Scarification ¾"	Sq Yd	1,238	-	1,238
Bridge Deck Latex Concrete Overlay, 2 ¾ Inches	Sq Yd	1,238	-	1,238
Structural Repair of Concrete (Depth Equal to or less than 5 Inches)	Sq Ft	-	300	300
Concrete Sealer	Sq Ft	3,087	-	3,087
Bridge Deck Grooving (Longitudinal)	Sq Yd	944	-	944
Drainage Scuppers to be Adjusted	Each	6	-	6
Approach Slab Repair (Partial Depth)	Sq Yd	4	-	4
Diamond Grinding (Bridge Section)	Sq Yd	1,238	-	1,238
Polymer Concrete	Cu Ft	20	-	20

MODEL: Default
FILE NAME: X:\OH\2025\20250016-44\Design\CADD\Structures\Sheets\Plan\SN-099-01\198-40\B46-012-GEN.dgn



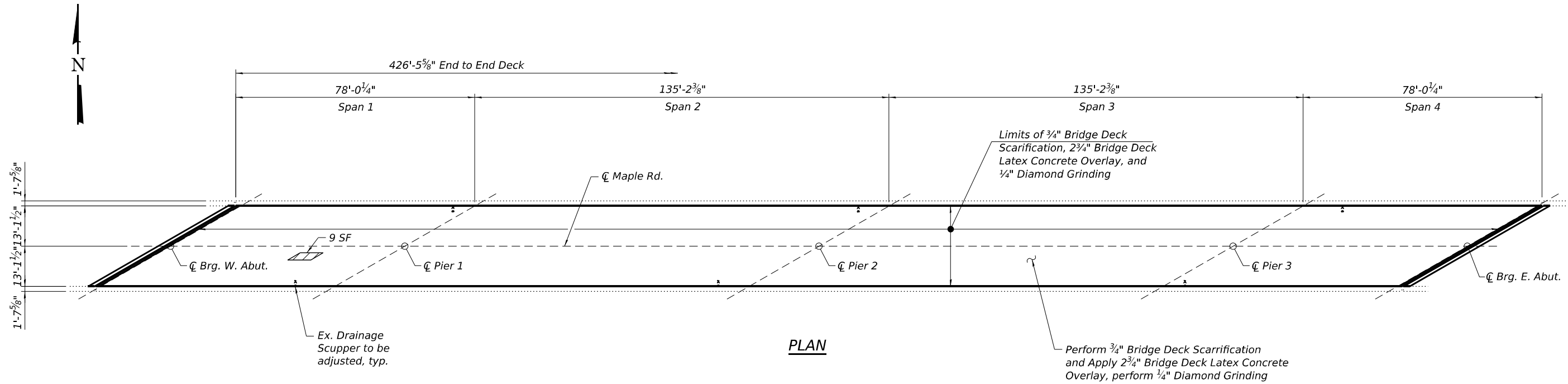
USER NAME =	DESIGNED - BB	REVISED -
	CHECKED - CG	REVISED -
PLOT SCALE =	DRAWN - DCP	REVISED -
PLOT DATE =	CHECKED - SH	REVISED -

**STATE OF ILLINOIS
DEPARTMENT OF TRANSPORTATION**

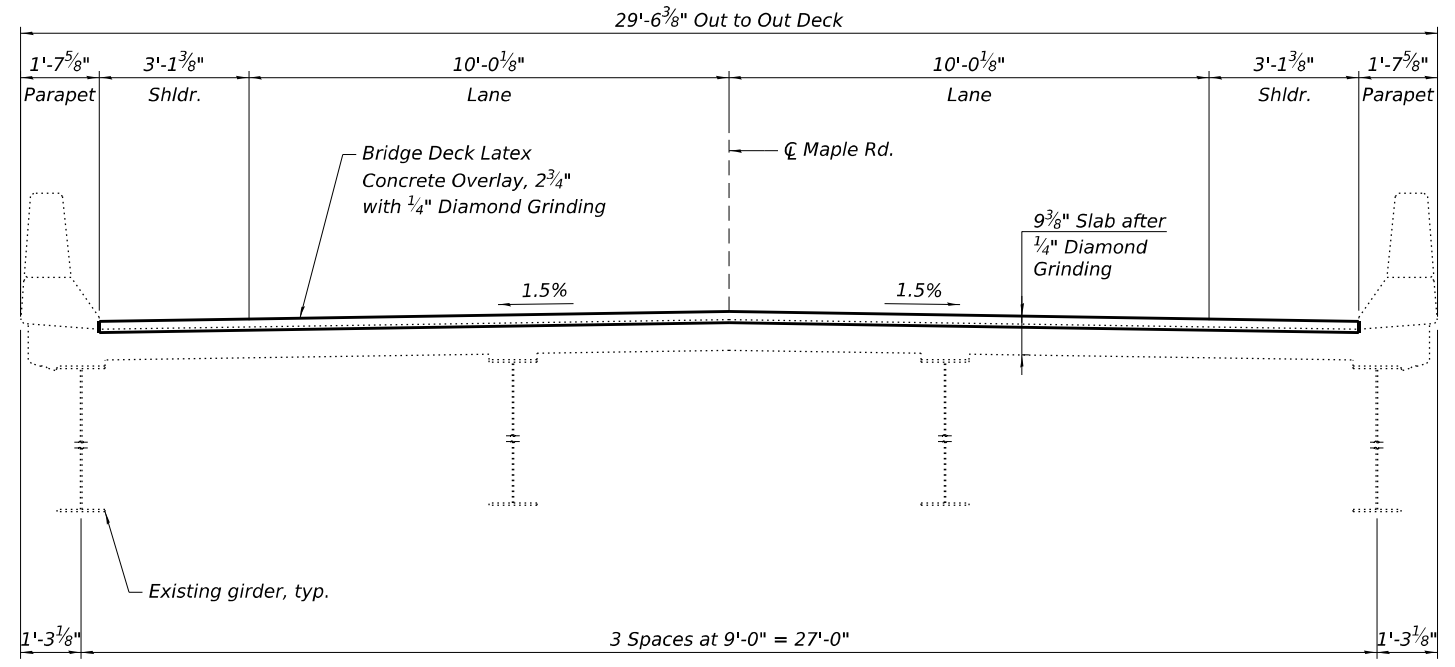
**GENERAL DATA
STRUCTURE NO. 099-0198**

SHEET 2 OF 10 SHEETS

F.A.I. RTE.	SECTION	COUNTY	TOTAL SHEETS	SHEET NO.
80	(99-5HB-3) BDR,BJR 25	WILL	25	10
			CONTRACT NO. 80B46	
		ILLINOIS	FED. AID PROJECT	



PLAN



TYPICAL CROSS SECTION
(Looking East)

BILL OF MATERIAL

ITEM	UNIT	QUANTITY
Protective Coat	Sq Yd	1,238
Concrete Sealer	Sq Ft	3,087
Bridge Deck Latex Concrete Overlay, 2 3/4 Inches	Sq Yd	1,238
Bridge Deck Scarification, 3/4"	Sq Yd	1,238
Diamond Grinding (Bridge Section)	Sq Yd	1,238
Bridge Deck Grooving (Longitudinal)	Sq Yd	944
Deck Slab Repair (Full Depth, Type II)	Sq Yd	1

LEGEND

- Deck Slab Repair (Full Depth, Type II)
- SF Square Foot

MODEL: Default
 FILE NAME: X:\O\12025\20250016-04\Design\CADD\Structures\Sheets\Plan\SN-099-0198-0990198-80B46-003-DEK.dgn
 3/12/2026 10:23:26 AM

GR&EF
 8501 W. Higgins Road, Suite 280
 Chicago, Illinois 60634 (773) 399-0182

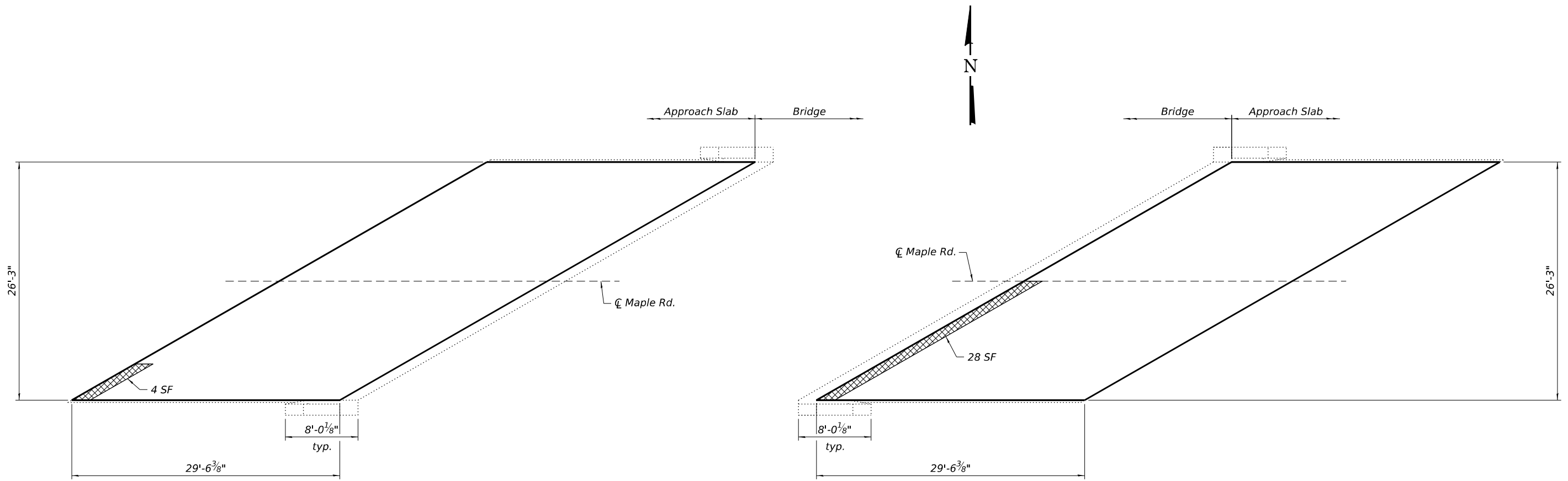
USER NAME =	DESIGNED - BB	REVISED -
	CHECKED - CG	REVISED -
PLOT SCALE =	DRAWN - DCP	REVISED -
PLOT DATE =	CHECKED - SH	REVISED -

STATE OF ILLINOIS
DEPARTMENT OF TRANSPORTATION

BRIDGE DECK OVERLAY AND REPAIRS
STRUCTURE NO. 099-0198

SHEET 3 OF 10 SHEETS

F.A.I. RTE.	SECTION	COUNTY	TOTAL SHEETS	SHEET NO.
80	(99-SHB-3) BDR,BJR 25	WILL	25	11
			CONTRACT NO. 80B46	
		ILLINOIS	FED. AID PROJECT	



EXISTING WEST APPROACH SLAB

EXISTING EAST APPROACH SLAB

BILL OF MATERIAL

ITEM	UNIT	QUANTITY
Approach Slab Repair (Partial Depth)	Sq Yd	4

LEGEND

- Approach Slab Repair
(Partial Depth)
- SF Square Foot

MODEL: Default
 FILE NAME: X:\O\12025\20250016-44\Design\CADD\Structures\Sheets\Plan\SN-099-01198\0990198-80B46-004-APP.dgn
 3/12/2026 10:23:26 AM

GRAEF
 8501 W. Higgins Road, Suite 280
 Chicago, Illinois 60634 (773) 399-0182

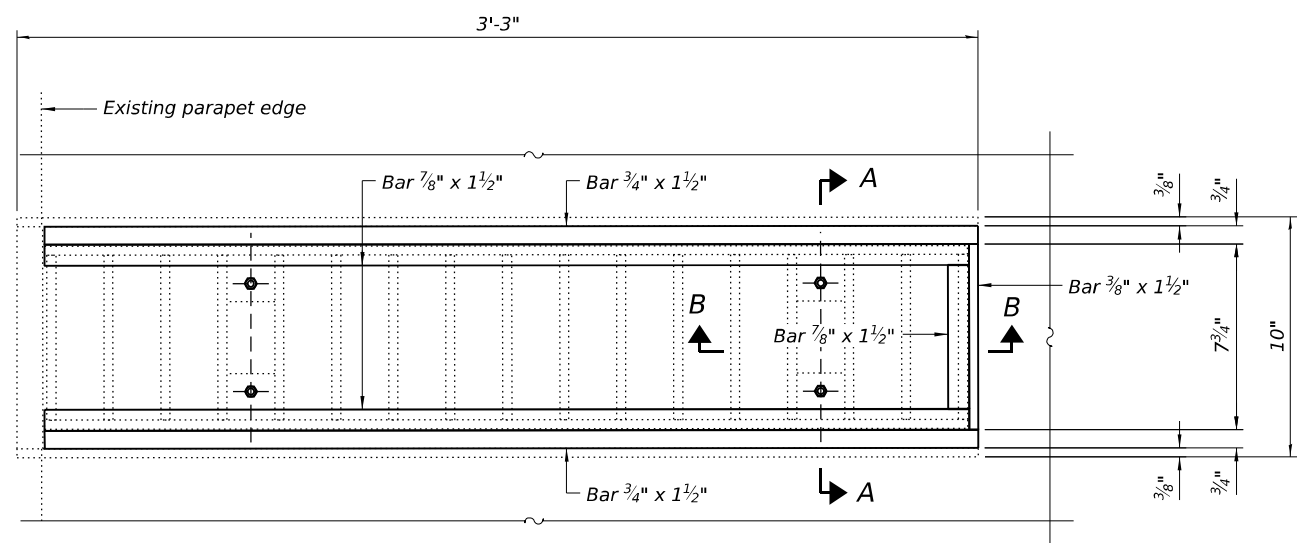
USER NAME =	DESIGNED - BB	REVISED -
	CHECKED - CG	REVISED -
PLOT SCALE =	DRAWN - DCP	REVISED -
PLOT DATE =	CHECKED - SH	REVISED -

STATE OF ILLINOIS
 DEPARTMENT OF TRANSPORTATION

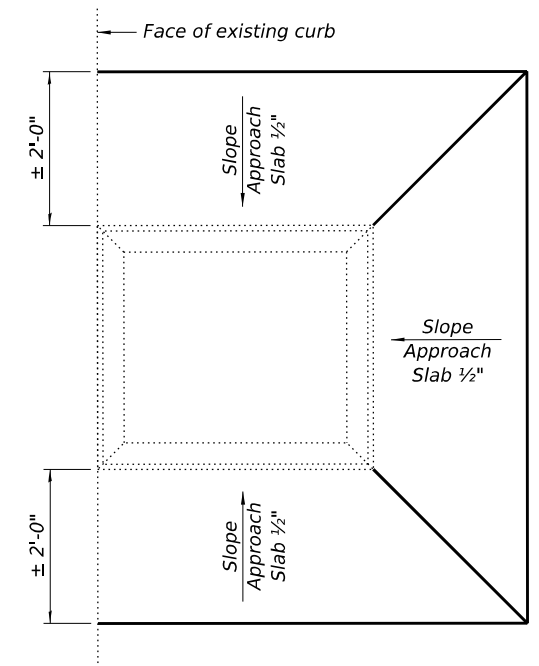
APPROACH SLAB REPAIRS
 STRUCTURE NO. 099-0198

SHEET 4 OF 10 SHEETS

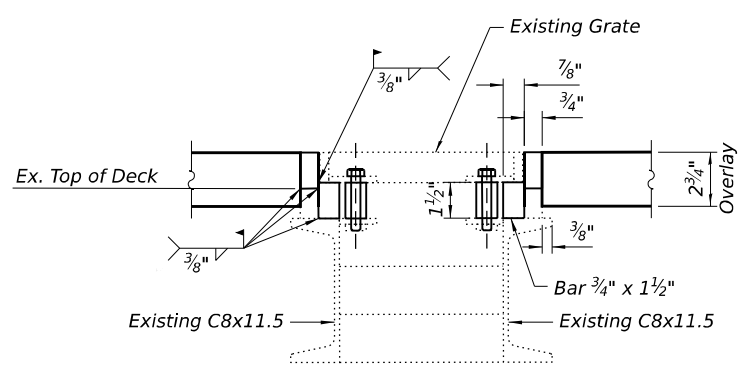
F.A.I. RTE.	SECTION	COUNTY	TOTAL SHEETS	SHEET NO.
80	(99-5HB-3) BDR,BJR 25	WILL	25	12
CONTRACT NO. 80B46				
ILLINOIS		FED. AID PROJECT		



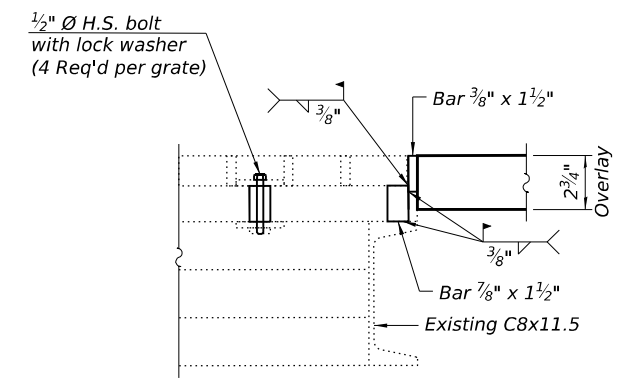
DRAINAGE SCUPPER PLAN



SLOPING PLAN



SECTION A-A



SECTION B-B

Notes:

- All structural steel shall be AASHTO M270 Grade 36. The adjusting inlet ring and adjusting scupper ring shall be galvanized.
- Bolts shall be 1/2" Ø, AASHTO M164 Type I, mechanically galvanized.
- All dimensions shall be field measured, verified, and adjusted as appropriate prior to shop drawings preparation. Contractor shall mark red line as-built plans.
- Shop drawings for proposed Steel \square Frame Extension and proposed adjusting scupper ring shall be submitted for approval prior to fabrication.
- Contractor shall ensure that no damage is done to existing grates to be reused.
- Cost of all labor and materials necessary to remove existing grates, install Steel \square Frame Extensions and reinstall grates is included in the cost per unit each for Inlet to be Adjusted.
- Cost of all labor and materials necessary to remove existing grates, clean existing scuppers, inlet all adjusting scupper rings and reinstall grates is included in the cost per unit each for Drainage Scuppers to be Adjusted.

BILL OF MATERIAL

ITEM	UNIT	QUANTITY
Drainage Scuppers to be Adjusted	Sq Yd	6

MODEL: Default
FILE NAME: X:\OH\2025\20250016-04\Design\CADD\Structures\Sheets\Plan\SN-099-0198-00-04\B46-005-DRN.dgn
3/12/2026 10:23:27 AM



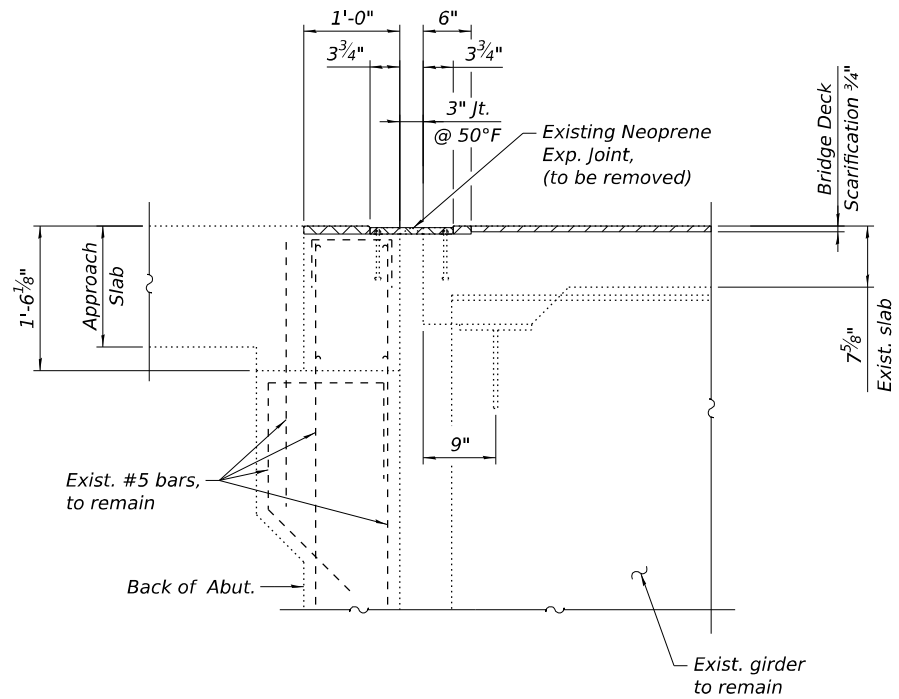
USER NAME =	DESIGNED - BB	REVISED -
	CHECKED - CG	REVISED -
PLOT SCALE =	DRAWN - DCP	REVISED -
PLOT DATE =	CHECKED - SH	REVISED -

**STATE OF ILLINOIS
DEPARTMENT OF TRANSPORTATION**

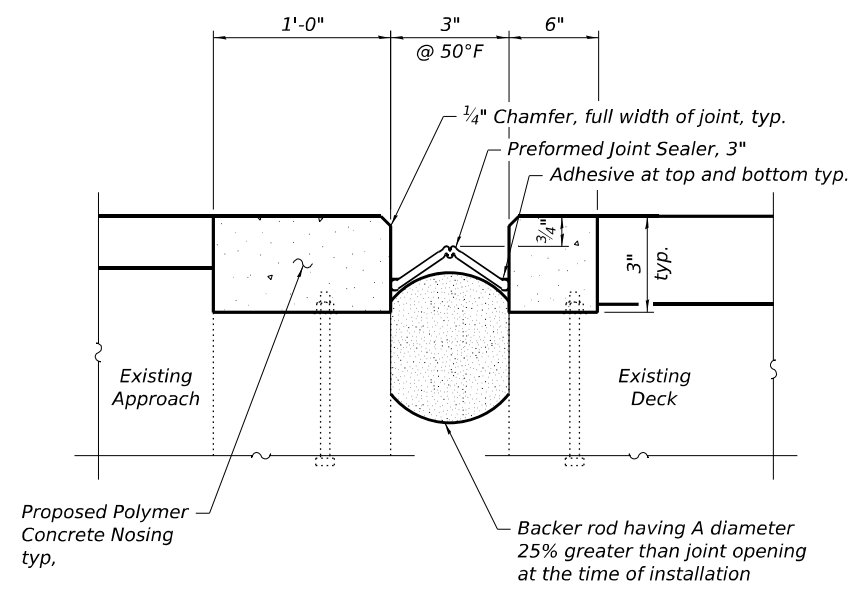
**DRAINAGE ADJUSTMENT DETAILS
STRUCTURE NO. 099-0198**

SHEET 5 OF 10 SHEETS

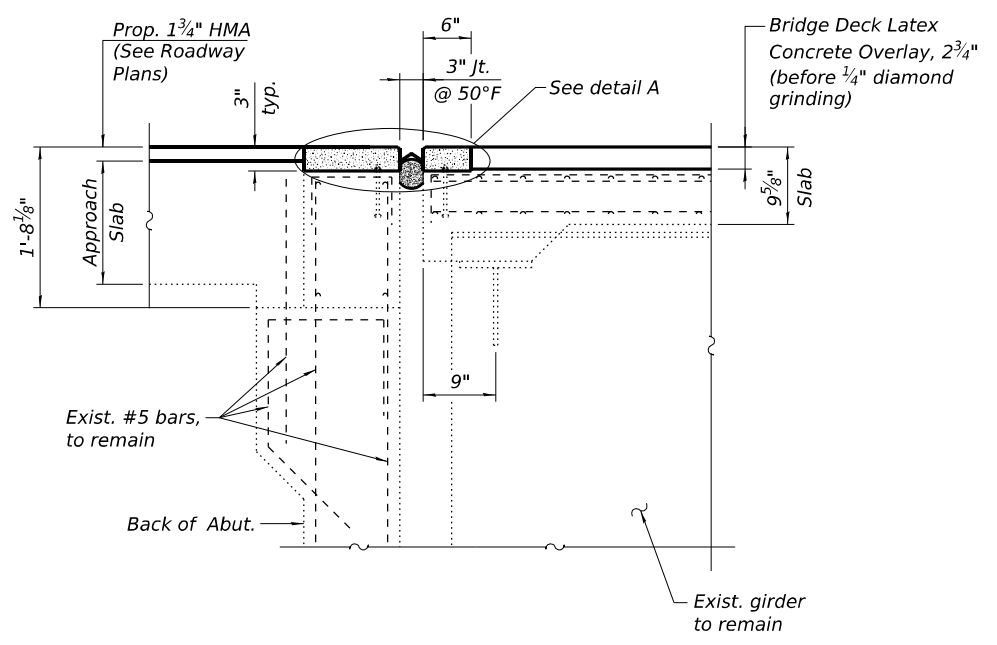
F.A.I. RTE.	SECTION	COUNTY	TOTAL SHEETS	SHEET NO.
80	(99-5HB-3) BDR,BJR 25	WILL	25	13
ILLINOIS FED. AID PROJECT			CONTRACT NO. 80B46	



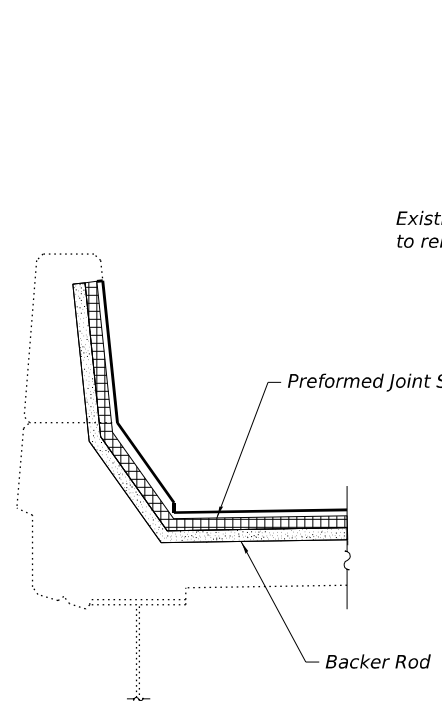
SECTION AT WEST ABUTMENT JOINT (EXISTING)
(East Abutment Joint Similar)



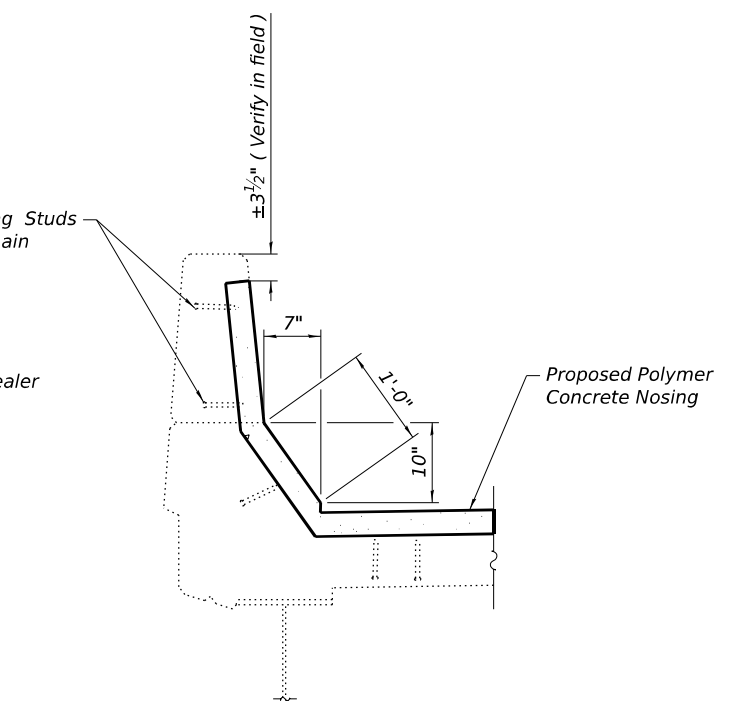
DETAIL A



SECTION AT WEST ABUTMENT JOINT (PROPOSED)
(East Abutment Joint Similar)



SECTION AT PARPAPET
(Preformed Joint Sealer)



SECTION AT PARPAPET
(Polymer Concrete Nosing)

- Notes:
1. Plan dimensions and details relative to existing plans are subject to nominal construction variations. The Contractor shall field verify existing dimensions and details affecting new construction and make necessary approved adjustments prior to construction or ordering of materials. Such variations shall not be cause for additional compensation for a change in scope of the work, however the Contractor will be paid for the quantity actually furnished at the unit bid price for the work.
 2. Removal of existing Neoprene Expansion Joint shall be included with the cost of Preformed Joint Seal.

BILL OF MATERIAL

ITEM	UNIT	QUANTITY
Preformed Joint Seal, 3"	Foot	118
Polymer Concrete	Cu. Ft.	20

LEGEND

- Concrete Removal
- Scarification

MODEL: Default
FILE NAME: X:\OH\2025\20250016-44\Design\CADD\Structures\Sheets\Plan\SN-099-41198\0990198-40B46-016-EXP.dgn
3/12/2026 10:23:28 AM

GRAEF
8501 W. Higgins Road, Suite 280
Chicago, Illinois 60634 (773) 399-0182

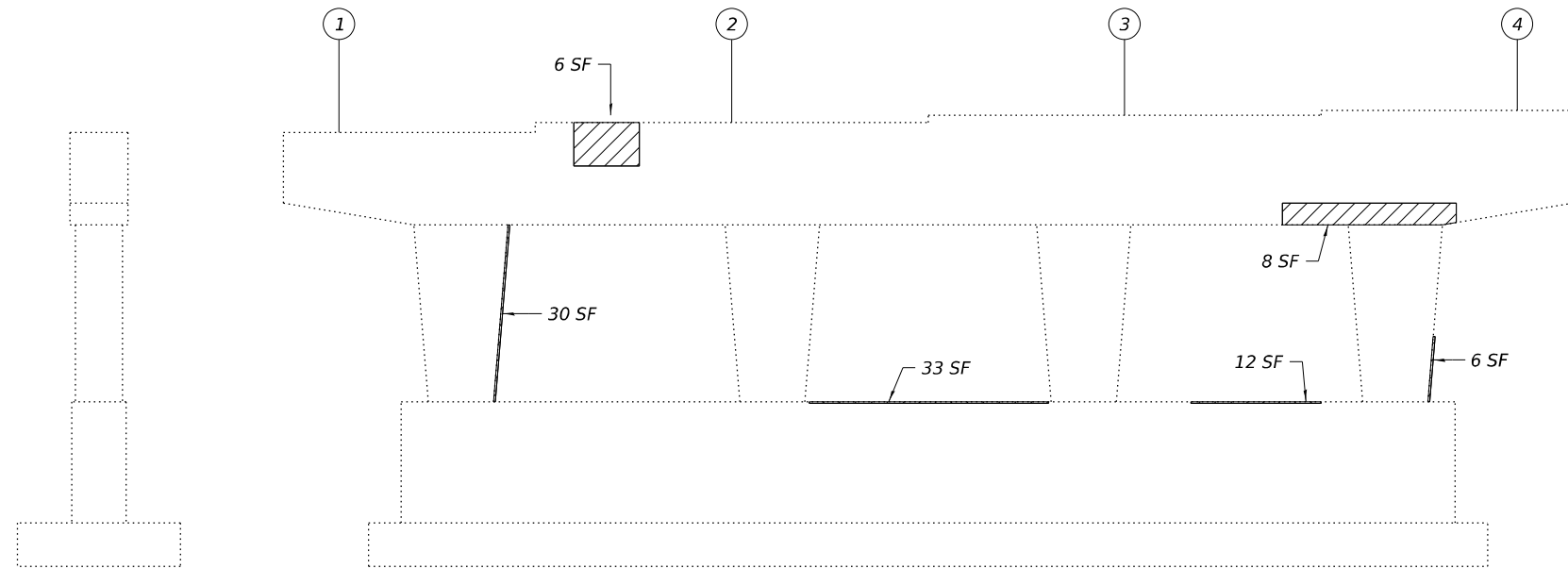
USER NAME =	DESIGNED - BB	REVISED -
	CHECKED - CG	REVISED -
PLOT SCALE =	DRAWN - DCP	REVISED -
PLOT DATE =	CHECKED - SH	REVISED -

STATE OF ILLINOIS
DEPARTMENT OF TRANSPORTATION

EXPANSION JOINT DETAILS
STRUCTURE NO. 099-0198

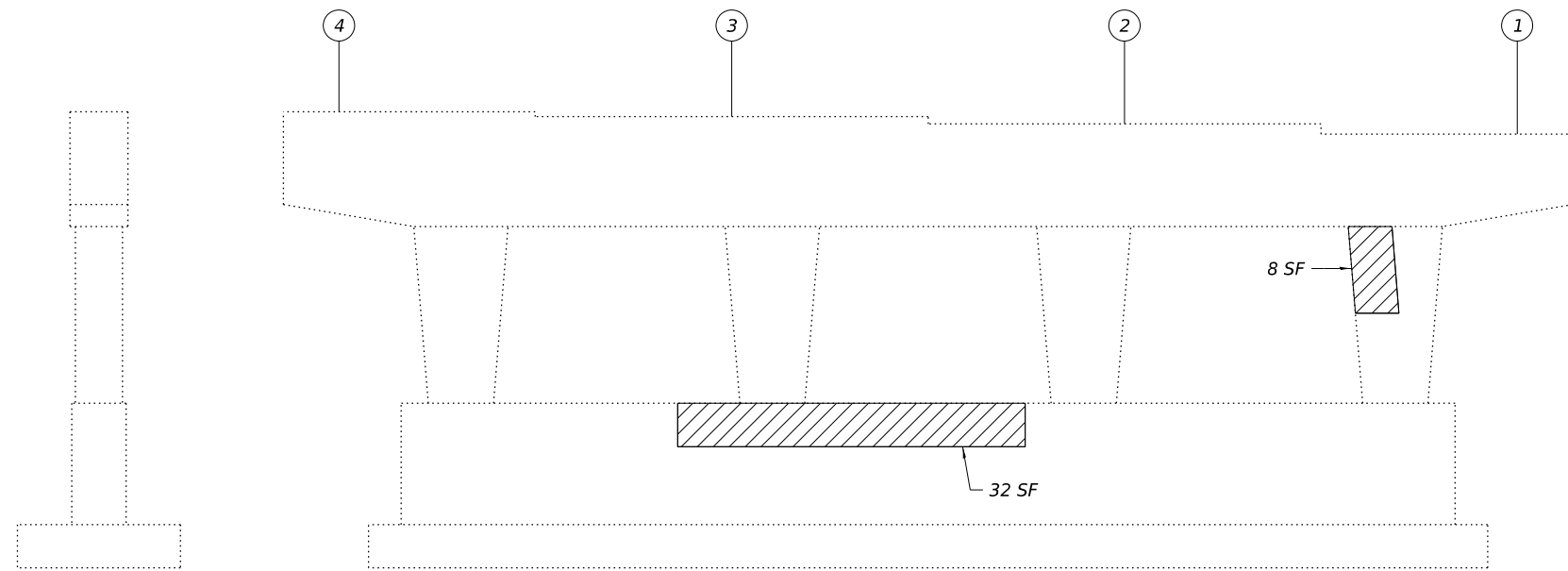
SHEET 6 OF 10 SHEETS

F.A.I. RTE.	SECTION	COUNTY	TOTAL SHEETS	SHEET NO.
80	(99-5HB-3) BDR,BJR 25	WILL	25	14
CONTRACT NO. 80B46				
ILLINOIS FED. AID PROJECT				



END VIEW

ELEVATION
(Looking West)



END VIEW

ELEVATION
(Looking East)

BILL OF MATERIAL

ITEM	UNIT	QUANTITY
Structural Repair of Concrete (Depth Equal to or Less Than 5 Inches)	Sq Ft	135

LEGEND

- Structural Repair of Concrete
(Depth Equal to or Less Than 5 Inches)
- SF Square Foot

MODEL: Default
 FILE NAME: X:\OH\2025\20250016-04\Design\CADD\Structures\Sheets\Plan\SN-099-01\198-0990198-80B46-017-PR1.dgn
 3/12/2026 10:23:29 AM

GRāEF
 8501 W. Higgins Road, Suite 280
 Chicago, Illinois 60634 (773) 399-0182

USER NAME =	DESIGNED - BB	REVISED -
	CHECKED - CG	REVISED -
PLOT SCALE =	DRAWN - DCP	REVISED -
PLOT DATE =	CHECKED - SH	REVISED -

STATE OF ILLINOIS
DEPARTMENT OF TRANSPORTATION

PIER 1 REPAIRS
STRUCTURE NO. 099-0198

SHEET 7 OF 10 SHEETS

F.A.I. RTE.	SECTION	COUNTY	TOTAL SHEETS	SHEET NO.
80	(99-SHB-3) BDR,BJR 25	WILL	25	15
			CONTRACT NO. 80B46	
		ILLINOIS	FED. AID PROJECT	

STATE OF ILLINOIS
DEPARTMENT OF TRANSPORTATION

FILE NO.	SECTION	COUNTY	TOTAL SHEETS	SHEET NO.
80	*	WILL	31	21
STA. 1+437.76		TO STA. 1+410.23		
FED. ROAD DIST. NO.		ILLINOIS	FED. AID PROJECT	
SECTION 99-54B		3 - R		

Sheet 7 of 14

Joint Size	"C" at 10 °C	"D" at 10 °C
100	75	65 Min.

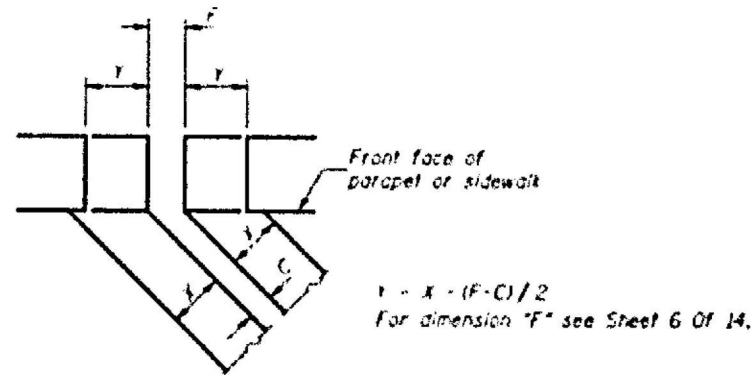
INSTALLATION NOTES

- Install continuous seal in roadway, parapet & curbs.
- Install anchor blocks as indicated.

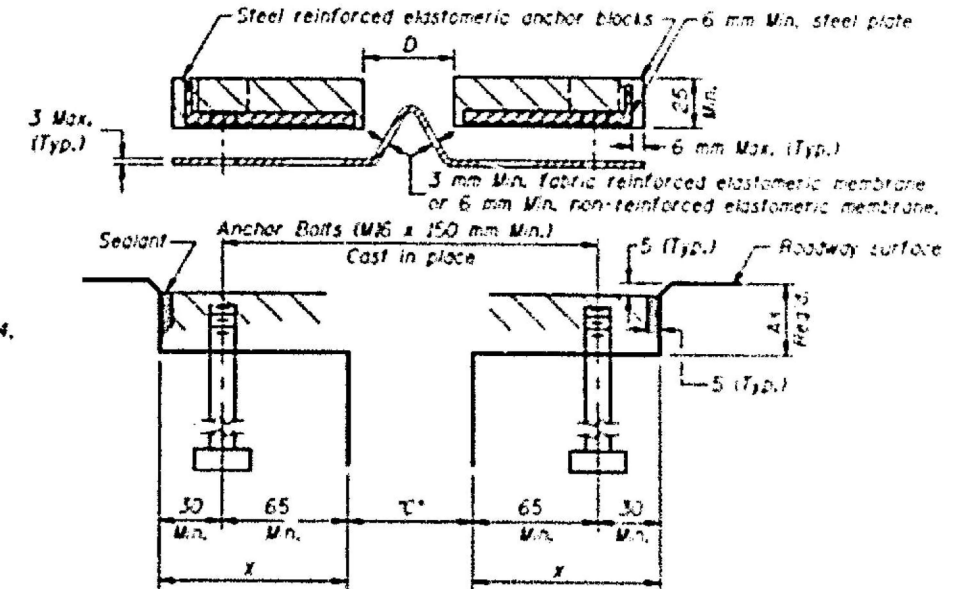
NOTE: A) Maximum spacing of anchor bolts shall be 500 centers.

SKEW LIMITATIONS

The details of the anchor blocks and the elastomeric membrane in the parapet, as shown, are for up to 50° skew. For skews greater than 50°, the anchor blocks and the elastomeric membrane, installed in accordance with dimension "D", might require modification to insure a minimum clearance of 40 mm from centerline of anchor studs to edge of parapet opening. The anchor blocks and the elastomeric membrane shall also be installed to the top of the parapet with the anchor studs spaced at 500 mm.



FORMING BLOCKOUT SKETCH



CROSS SECTION

GENERAL NOTES

Continuous Seal Neoprene Expansion Joint shall consist of molded anchor blocks of elastomer and steel, field assembled over continuous lengths of elastomeric membrane.

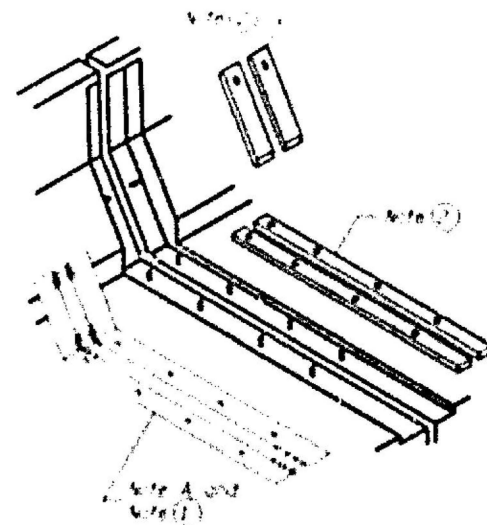
The elastomeric membrane shall be pre-molded with a single or a double upward convolution that will have a "memory" to return to its molded position upon joint closure.

The convolution length shall be such that the extended length will not be greater than the manufactured length when the joint is fully expanded in its design range and will not protrude above the anchor blocks when the joint is fully compressed.

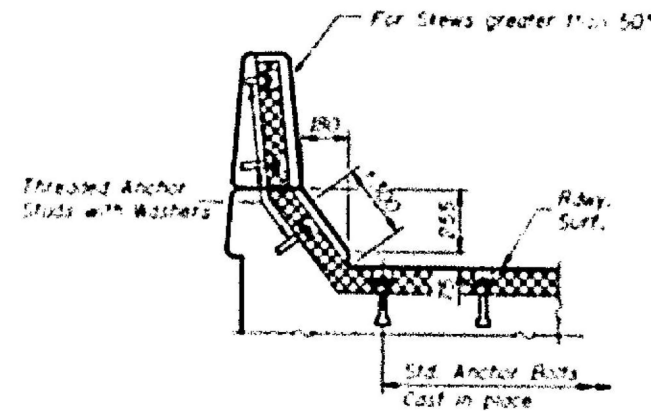
Joint openings shall be adjusted in accordance with Article 503.81(c) of the Standard Specifications when the deck is poured at an ambient temperature other than 10 °C.

The parapet and sidewalk flaps shall be made continuous by an approved vulcanizing process. Lapping will not be permitted.

All dimensions are in millimeters (mm) except as noted.



AT PARAPET



AT PARAPET

FOR INFORMATION ONLY

Bil of Material

Item	Unit	Total
Neoprene Exp. JT. 200mm	m	16.00

DuSABLE, Inc
CONSULTING ENGINEERS
CONSTRUCTION MANAGERS
175 W. JACKSON BLVD.
SUITE 4025
CHICAGO IL 60604

REVISION	DATE

STATE OF ILLINOIS
DEPARTMENT OF TRANSPORTATION
CONTINUOUS SEAL TYPE NEOPRENE EXPANSION JOINTS
CH-38A MAPLE ROAD OVER
F.A.L. ROUTE 80 SECT. 99-54B-3-R
WILL COUNTY
STA. 1 + 524.00
STRUCTURE NO. 099-0198
SCALE: NONE
(DRAWN BY: VBL)

MODEL: Default
FILE NAME: X:\OH\2025\20250016-04\Design\CADD\Structures\Sheets\Plan\SN-099-0198\0990198-80B46-010-EXT.dgn
3/12/2026 10:23:33 AM

GR&EF
8501 W. Higgins Road, Suite 280
Chicago, Illinois 60634 (773) 399-082

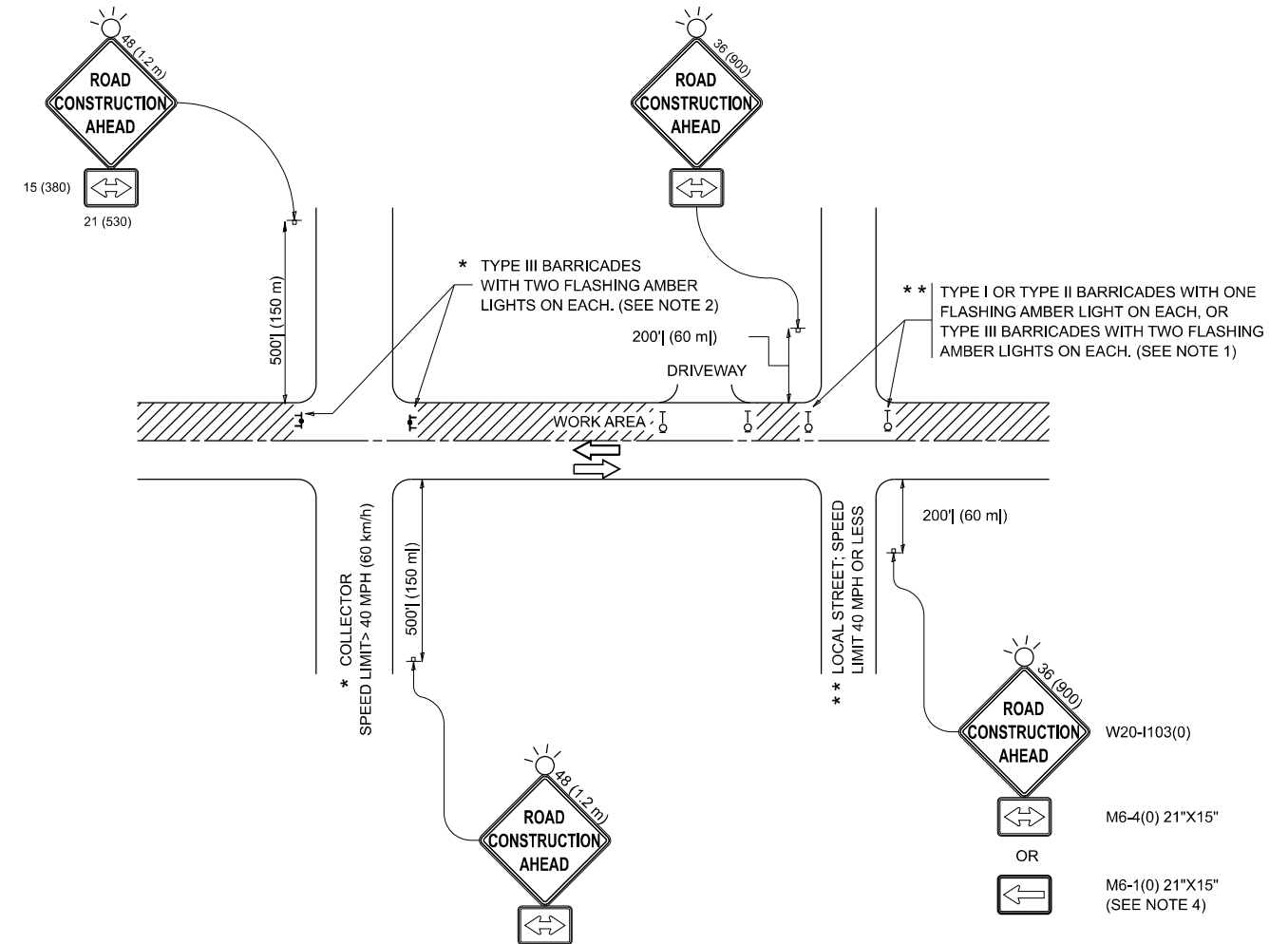
USER NAME =	DESIGNED - BB	REVISED -
	CHECKED - CG	REVISED -
PLOT SCALE =	DRAWN - DCP	REVISED -
PLOT DATE =	CHECKED - SH	REVISED -

STATE OF ILLINOIS
DEPARTMENT OF TRANSPORTATION

EXISTING PLAN
STRUCTURE NO. 099-0198

SHEET 10 OF 10 SHEETS

F.A.I. RTE.	SECTION	COUNTY	TOTAL SHEETS	SHEET NO.
80	(99-54B-3) BDR, BJR 25	WILL	25	18
ILLINOIS				FED. AID PROJECT
CONTRACT NO. 80B46				



NOTES:

1. SIDE ROAD WITH A SPEED LIMIT OF 40 MPH (60 km/h) OR LESS AS SHOWN ON THE DRAWING AND AS DIRECTED BY THE ENGINEER:
 - a) ONE "ROAD CONSTRUCTION AHEAD" SIGN 36 x 36 (900x900) WITH A FLASHER MOUNTED ON IT APPROXIMATELY 200' (60 m) IN ADVANCE OF THE MAIN ROUTE.
 - b) THE CLOSED PORTION OF THE MAIN ROUTE SHALL BE PROTECTED BY BLOCKING WITH TYPE I, TYPE II OR TYPE III BARRICADES, 1/3 OF THE CROSS SECTION OF THE CLOSED PORTION.
2. SIDE ROAD WITH A SPEED LIMIT GREATER THAN 40 MPH (60 km/h) AS SHOWN ON THE DRAWING AND AS DIRECTED BY THE ENGINEER:
 - a) ONE "ROAD CONSTRUCTION AHEAD" SIGN 48 x 48 (1.2 m x 1.2 m) WITH A FLASHER MOUNTED ON IT APPROXIMATELY 500' (150 m) IN ADVANCE OF THE MAIN ROUTE.
 - b) THE CLOSED PORTION OF THE MAIN ROUTE SHALL BE PROTECTED BY BLOCKING WITH TYPE III BARRICADES, 1/2 OF THE CROSS SECTION OF THE CLOSED PORTION.
3. CONES MAY BE SUBSTITUTED FOR BARRICADES OR DRUMS AT HALF THE SPACING DURING DAY OPERATIONS. CONES SHALL BE A MINIMUM OF 28 (710) IN HEIGHT.
4. WHEN THE SIDE ROAD LIES BETWEEN THE BEGINNING OF THE MAINLINE SIGNING AND THE WORK ZONE, A SINGLE HEADED ARROW (M6-1) SHALL BE USED IN LIEU OF THE DOUBLE HEADED ARROW (M6-4).
5. WHEN WORK IS BEING PERFORMED ON A SIDE ROAD OR DRIVEWAY, FOLLOW THE APPLICABLE STANDARD(S). THE DIRECTIONAL ARROW (M6-1 OR M6-4) SHALL BE COVERED OR REMOVED WHEN NO LONGER CONSISTENT WITH THE TRAFFIC CONTROL SET-UP.
6. ADVANCE WARNING SIGNS ARE TO BE OMITTED ON DRIVEWAYS UNLESS OTHERWISE SPECIFIED IN THE PLANS OR BY THE ENGINEER.
7. THE TRAFFIC CONTROL AND PROTECTION FOR SIDE ROADS, INTERSECTIONS, AND DRIVEWAYS SHALL BE INCLUDED IN THE COST OF SPECIFIED TRAFFIC CONTROL STANDARDS OR ITEMS.

All dimensions are in inches (millimeters) unless otherwise shown.

MODEL: TC-10 (Sheet)
FILE NAME: c:\pw\work\vw\illinois\rev\0951415\TC-10.dgn

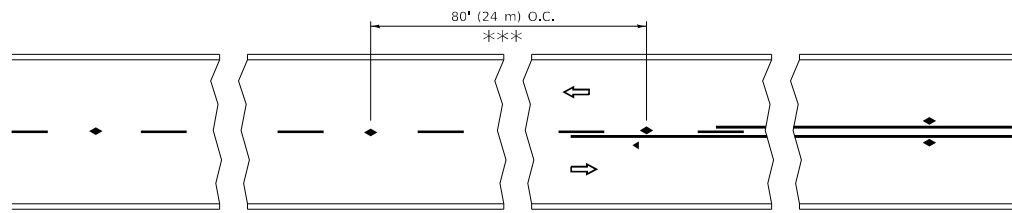
USER NAME =	lawrence.demanche	DESIGNED -	L.H.A.	REVISED -	T. RAMMACHER 01-06-00
		DRAWN -		REVISED -	A. SCHUETZE 07-01-13
PLOT SCALE =	0.083333317" / in.	CHECKED -		REVISED -	A. SCHUETZE 09-15-06
PLOT DATE =	10/2/2025	DATE -	06-89	REVISED -	D. SENDERAK 05-03-25

**STATE OF ILLINOIS
DEPARTMENT OF TRANSPORTATION**

**TRAFFIC CONTROL AND PROTECTION FOR
SIDE ROADS, INTERSECTIONS, AND DRIVEWAYS**

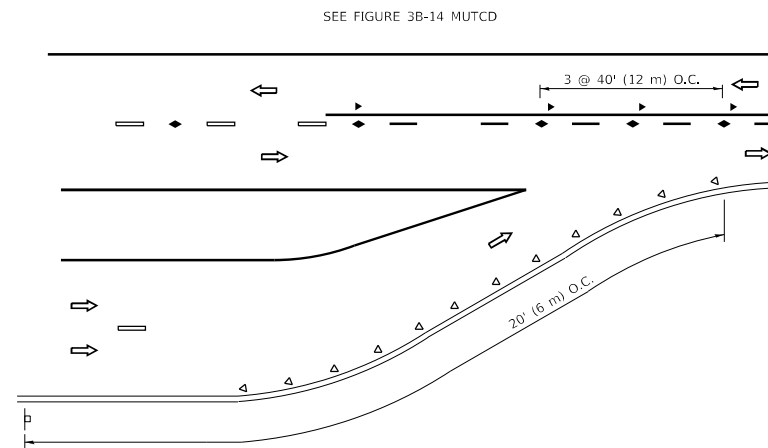
SCALE: SHEET OF SHEETS STA. TO STA.

F.A.P. RTE.	SECTION	COUNTY	TOTAL SHEETS	SHEET NO.
			25	20
TC-10			CONTRACT NO.	
ILLINOIS FED. AID PROJECT				

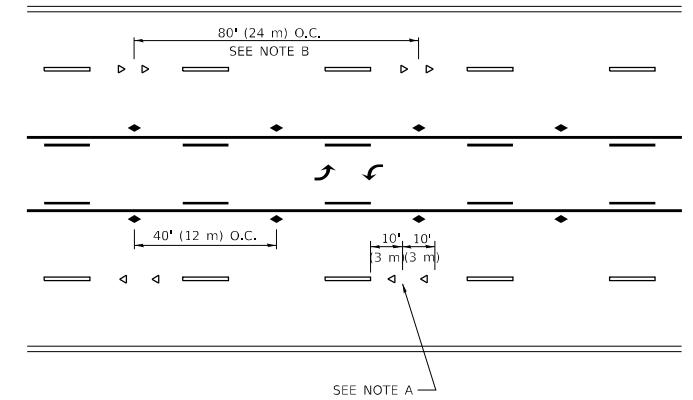


*** REDUCE TO 40' (12 m) O.C. ON CURVES WITH POSTED OR ADVISORY SPEED 45 M.P.H. (70 km/h) OR LESS.

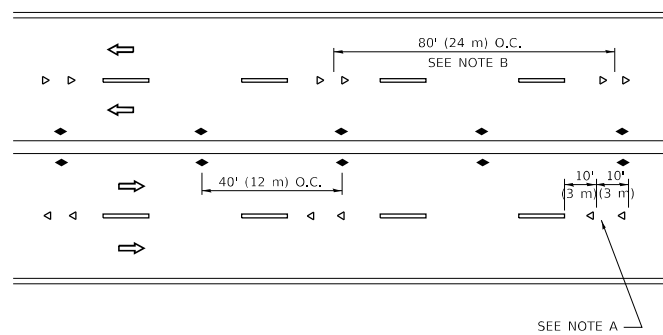
TWO-LANE/TWO-WAY



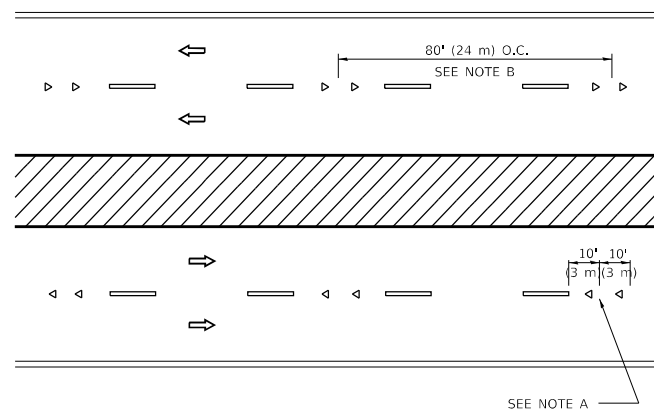
LANE REDUCTION TRANSITION



TWO-WAY LEFT TURN



MULTI-LANE/UNDIVIDED



MULTI-LANE/DIVIDED

GENERAL NOTES

1. MARKERS USED WITH DASHED LINES SHALL BE CENTERED IN THE GAP BETWEEN SEGMENTS.
2. MARKERS USED ADJACENT TO SOLID LINES SHALL BE OFFSET 2 TO 3 (50 TO 75) TOWARD TRAFFIC AS SHOWN.
3. MARKERS THROUGH TANGENTS LESS THAN 500' (150 m) IN LENGTH BETWEEN CURVES SHALL BE INSTALLED AT THE LESSER OF THE TWO CURVE SPACINGS.
4. MARKERS ARE TO BE USED ADJACENT TO BOTH SOLID WHITE LINES IN DUAL LEFT TURN LANES

SYMBOLS

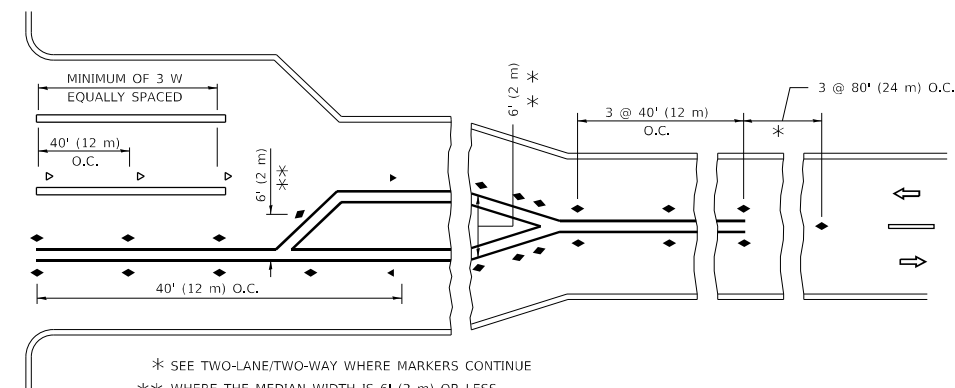
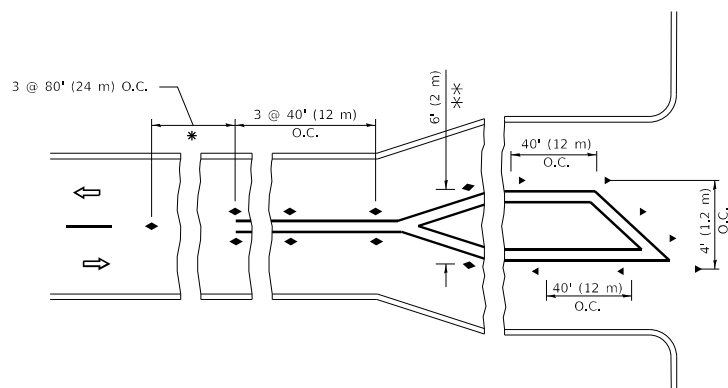
- YELLOW STRIPE
- WHITE STRIPE
- ◀ ONE-WAY AMBER MARKER
- ◀ ONE-WAY CRYSTAL MARKER (W/O)
- ◆ TWO-WAY AMBER MARKER

LANE MARKER NOTES

- A. USE DOUBLE LANE LINE MARKERS SPACED AS SHOWN.
- B. REDUCE TO 40' (12 m) O.C. ON CURVES WHERE ADVISORY SPEEDS ARE 10 M.P.H (20 km/h) LOWER THAN POSTED SPEEDS.

DESIGN NOTES

1. DOUBLE LANE LINE MARKERS SHALL BE USED UNLESS SPECIFIED OTHERWISE.
2. EXCEPT AS SHOWN ON THE LANE REDUCTION TRANSITION AND FREEWAY EXIT RAMP DETAIL, MARKERS ARE NOT TO BE SPECIFIED ON RIGHT EDGE LINES.
3. THE EXACT MARKER LIMITS, SPACING, AND COLOR SHALL BE INCLUDED IN THE PLANS WHEN STANDARD SPECIFICATIONS ARE NOT BEING USED.
4. MARKERS SHOULD NOT BE USED ALONGSIDE CURBS EXCEPT FOR EXTREMELY SHORT SECTIONS OF CURBS WHERE NOT MORE THAN TWO MARKERS WOULD BE INVOLVED.



* SEE TWO-LANE/TWO-WAY WHERE MARKERS CONTINUE
 *** WHERE THE MEDIAN WIDTH IS 6' (2 m) OR LESS USE TWO-WAY MARKERS.

TURN LANES

All dimensions are in inches (millimeters) unless otherwise shown.

MODEL: D:\draft... FILE NAME: ... PROJECT: ...

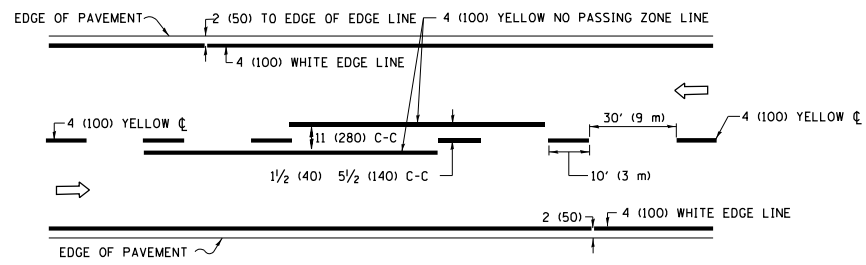
USER NAME = footemj	DESIGNED -	REVISED - T. RAMMACHER 03-12-99
	DRAWN -	REVISED - T. RAMMACHER 01-06-00
PLOT SCALE = 50.0000 1/ in.	CHECKED -	REVISED - C. JUCIUS 09-09-09
PLOT DATE = 3/4/2019	DATE -	REVISED - C. JUCIUS 07-01-13

**STATE OF ILLINOIS
DEPARTMENT OF TRANSPORTATION**

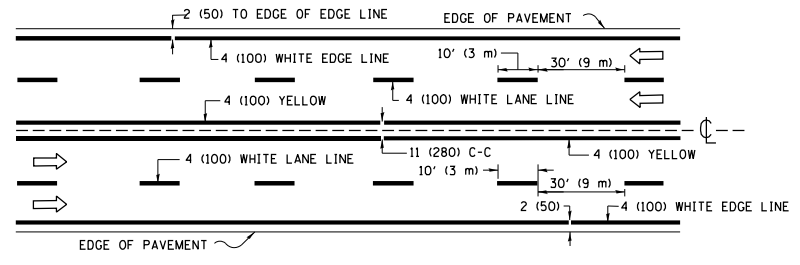
**TYPICAL APPLICATIONS
RAISED REFLECTIVE PAVEMENT MARKERS (SNOW-PLOW RESISTANT)**

SCALE: NONE SHEET 1 OF 1 SHEETS STA. TO STA.

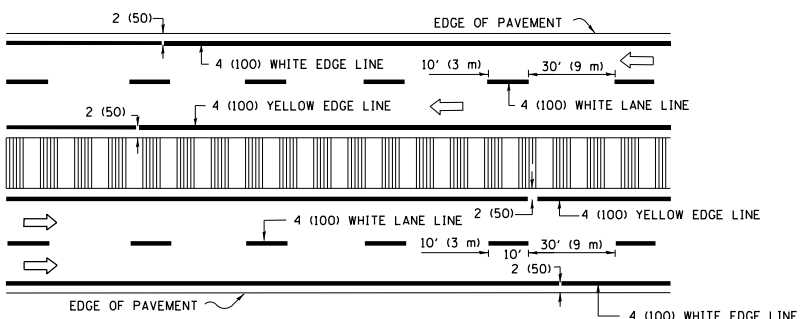
F.A. RTE.	SECTION	COUNTY	TOTAL SHEETS	SHEET NO.
			25	21
TC-11			CONTRACT NO.	
ILLINOIS FED. AID PROJECT				



2-LANE ROADWAY

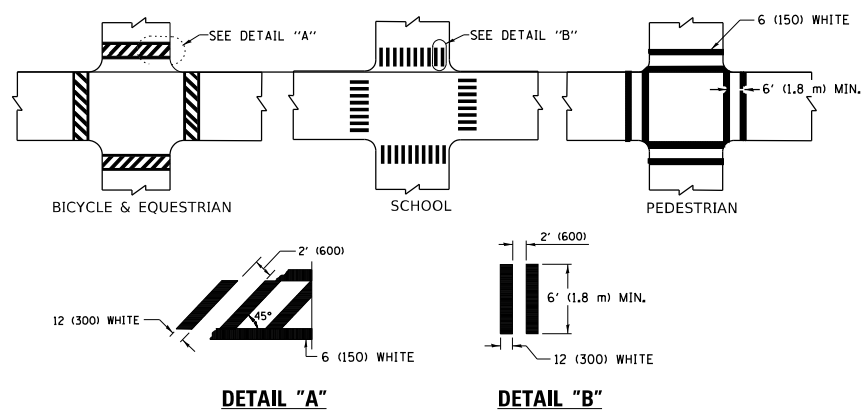


MULTI-LANE UNDIVIDED



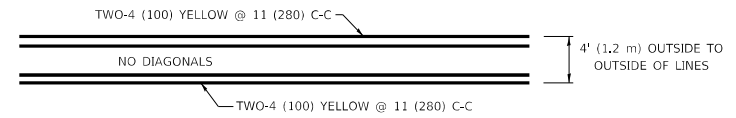
MULTI-LANE DIVIDED WITH MEDIAN

TYPICAL LANE AND EDGE LINE MARKING

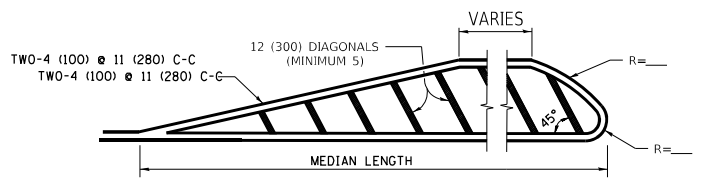


TYPICAL CROSSWALK MARKING

* MARKINGS SHALL BE INSTALLED PARALLEL TO THE CENTERLINE OF THE ROAD WHICH IT CROSSES



4' (1.2 m) WIDE MEDIANS ONLY

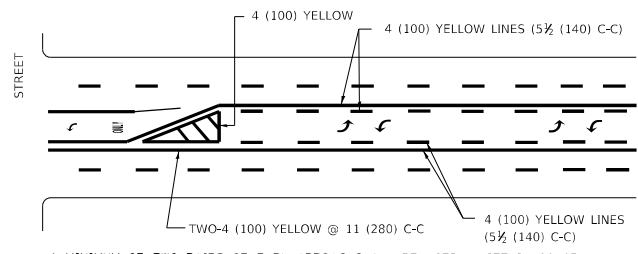


MEDIANS OVER 4' (1.2 m) WIDE

FOR MEDIAN LENGTHS WHERE DIAGONAL SPACING CANNOT BE ATTAINED, USE 5 (FIVE) EQUALLY SPACED DIAGONAL LINES.

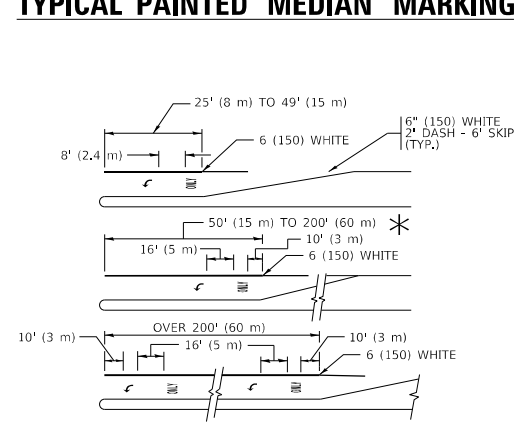
DIAGONAL LINE SPACING: 50' (15 m) C-C (LESS THAN 30MPH (50 km/h))
75' (25 m) C-C 30MPH (50 km/h) TO 45MPH (70 km/h)
150' (45 m) C-C (MORE THAN 45MPH (70 km/h))

TYPICAL PAINTED MEDIAN MARKING



MEDIAN WITH TWO-WAY LEFT TURN LANE

TYPICAL TURN LANE MARKING

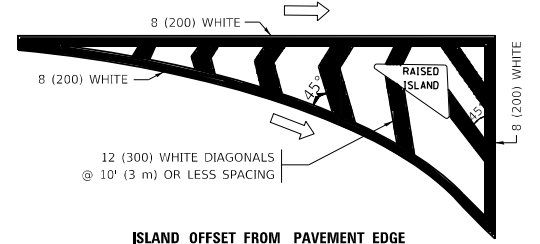


FULL SIZE LETTERS 8' (2.4 m) AND ARROWS SHALL BE USED.
AREA = 15.6 SQ. FT. (1.5 m²) ONLY AREA = 20.8 SQ. FT. (1.9 m²)

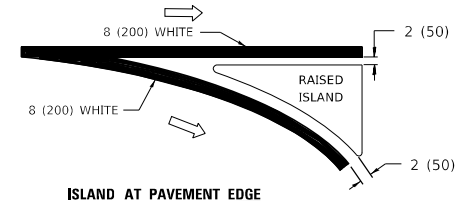
* TURN LANES IN EXCESS OF 400' (120 m) IN LENGTH MAY HAVE AN ADDITIONAL SET OF ARROW - "ONLY" INSTALLED MIDWAY BETWEEN THE OTHER TWO SETS OF ARROW - "ONLY".

TYPICAL LEFT (OR RIGHT) TURN LANE

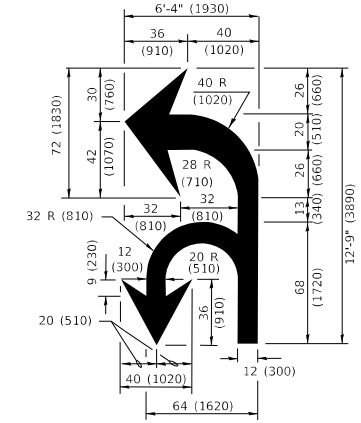
TYPICAL TURN LANE MARKING



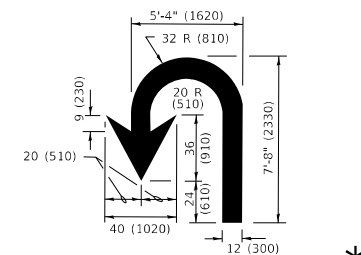
ISLAND OFFSET FROM PAVEMENT EDGE



TYPICAL ISLAND MARKING



COMBINATION LEFT AND U-TURN



U-TURN

LANE REDUCTION TRANSITION

* LANE REDUCTION ARROWS REQUIRED AT SPEEDS OF 45 MPH OR GREATER OR WHEN SPECIFIED IN PLANS.

D(FT)	SPEED LIMIT
345	30
425	35
500	40
580	45
665	50
750	55

TYPE OF MARKING	WIDTH OF LINE	PATTERN	COLOR	SPACING / REMARKS
CENTERLINE ON 2 LANE PAVEMENT	4 (100)	SKIP-DASH	YELLOW	10' (3 m) LINE WITH 30' (9 m) SPACE
CENTERLINE ON MULTI-LANE UNDIVIDED PAVEMENT	2 @ 4 (100)	SOLID	YELLOW	11 (280) C-C
NO PASSING ZONE LINES: FOR ONE DIRECTION FOR BOTH DIRECTIONS	4 (100) 2 @ 4 (100)	SOLID SOLID	YELLOW YELLOW	5/2 (140) C-C FROM SKIP-DASH CENTERLINE 11 (280) C-C OMIT SKIP-DASH CENTERLINE BETWEEN
LANE LINES	4 (100) 5 (125) ON FREEWAYS	SKIP-DASH SKIP-DASH	WHITE WHITE	10' (3 m) LINE WITH 30' (9 m) SPACE
DOTTED LINES (EXTENSIONS OF CENTER, LANE OR TURN LANE MARKINGS)	SAME AS LINE BEING EXTENDED	SKIP-DASH	SAME AS LINE BEING EXTENDED	2' (600) LINE WITH 6' (1.8 m) SPACE
EDGE LINES	4 (100)	SOLID	YELLOW-LEFT WHITE-RIGHT	OUTLINE MEDIANS IN YELLOW
TURN LANE MARKINGS	6 (150) LINE; FULL SIZE LETTERS & SYMBOLS (8' (2.4m))	SOLID	WHITE	SEE TYPICAL TURN LANE MARKING DETAIL
TWO WAY LEFT TURN MARKING	2 @ 4 (100) EACH DIRECTION 8' (2.4m) LEFT ARROW	SKIP-DASH AND SOLID IN PAIRS	YELLOW WHITE	10' (3 m) LINE WITH 30' (9 m) SPACE FOR SKIP-DASH; 5/2 (140) C-C BETWEEN SOLID LINE AND SKIP-DASH LINE SEE TYPICAL TWO-WAY LEFT TURN MARKING DETAIL
CROSSWALK LINES (PEDESTRIAN) A. DIAGONALS (BIKE & EQUESTRIAN) B. LONGITUDINAL BARS (SCHOOL)	2 @ 6 (150) 12 (300) @ 45° 12 (300) @ 90°	SOLID SOLID SOLID	WHITE WHITE WHITE	NOT LESS THAN 6' (1.8 m) APART 2' (600) APART SEE TYPICAL CROSSWALK MARKING DETAILS.
STOP LINES	24 (600)	SOLID	WHITE	PLACE 4' (1.2 m) IN ADVANCE OF AND PARALLEL TO CROSSWALK, IF PRESENT. OTHERWISE, PLACE AT DESIRED STOPPING POINT, PARALLEL TO CROSSROAD CENTERLINE, WHERE POSSIBLE
PAINTED MEDIANS	2 @ 4 (100) WITH 12 (300) DIAGONALS @ 45° NO DIAGONALS USED FOR 4' (1.2 m) WIDE MEDIANS	SOLID	YELLOW: TWO WAY TRAFFIC WHITE: ONE WAY TRAFFIC	11 (280) C-C FOR THE DOUBLE LINE SEE TYPICAL PAINTED MEDIAN MARKING.
GORE MARKING AND CHANNELIZING LINES	8 (200) WITH 12 (300) DIAGONALS @ 45°	SOLID	WHITE	DIAGONALS: 15' (4.5 m) C-C (LESS THAN 30MPH (50 km/h)) 20' (6 m) C-C 30MPH (50 km/h) TO 45MPH (70 km/h) 30' (9 m) C-C (OVER 45MPH (70 km/h))
RAILROAD CROSSING	24 (600) TRANSVERSE LINES "RR" IS 8' (1.8 m) LETTERS: 16 (400) LINE FOR "X"	SOLID	WHITE	SEE STATE STANDARD 780001 AREA OF: "R"=3.6 SQ. FT. (0.33 m ²) EACH "X"=54.0 SQ. FT. (5.0 m ²)
SHOULDER DIAGONALS (REQUIRED FOR SHOULDERS ≥ 8')	12 (300) @ 45°	SOLID	WHITE - RIGHT YELLOW - LEFT	50' (15 m) C-C (LESS THAN 30MPH (50 km/h)) 75' (25 m) C-C (30 MPH (50 km/h) TO 45MPH (70 km/h)) 150' (45 m) C-C (OVER 45MPH (70 km/h))
U TURN ARROW	SEE DETAIL	SOLID	WHITE	16.3 SF
2 ARROW COMBINATION LEFT AND U TURN	SEE DETAIL	SOLID	WHITE	30.4 SF

FOR FURTHER DETAILS ON PAVEMENT MARKING REFER TO STANDARD SPECIFICATIONS FOR ROAD AND BRIDGE CONSTRUCTION AND STATE STANDARD 780001.

All dimensions are in inches (millimeters) unless otherwise shown.

MODEL: D:\draft...
FILE NAME: p:\u0008\BID\NITEC...
PROJECT: D:\draft...
DATE: 3/4/2019

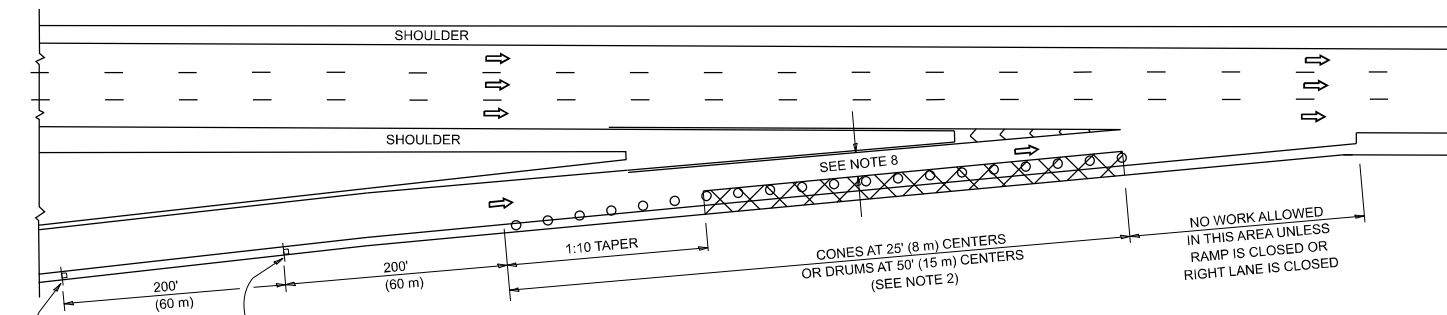
USER NAME	DESIGNED	REVISION
= footemj	- EVERS	- C. JUCIUS 09-09-09
	-	- C. JUCIUS 07-01-13
PLOT SCALE = 50.0000 1' / in.	CHECKED -	REVISION - C. JUCIUS 12-21-15
PLOT DATE = 3/4/2019	DATE - 03-19-90	REVISION - C. JUCIUS 04-12-16

**STATE OF ILLINOIS
DEPARTMENT OF TRANSPORTATION**

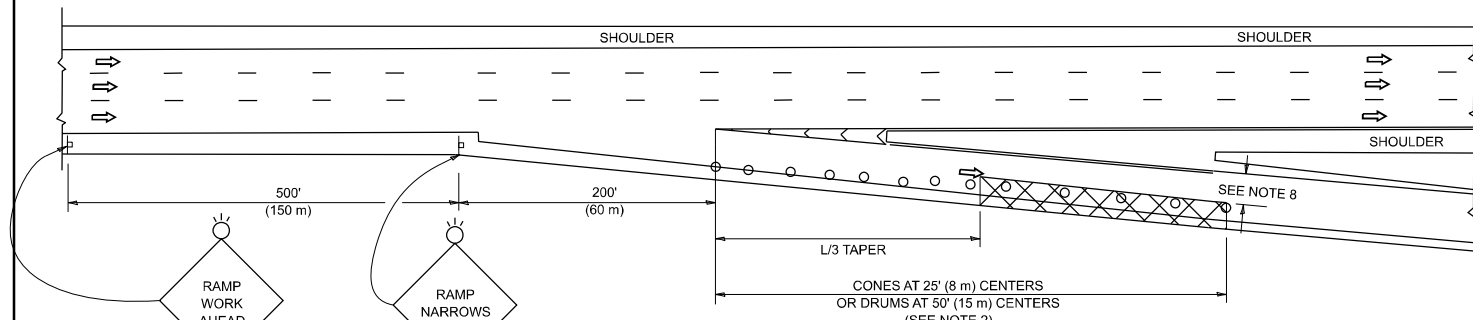
DISTRICT ONE TYPICAL PAVEMENT MARKINGS			
SCALE: NONE	SHEET 1 OF 2 SHEETS	STA. TO STA.	

F.A. RTE.	SECTION	COUNTY	TOTAL SHEETS	SHEET NO.
			25	22
TC-13			CONTRACT NO.	
ILLINOIS FED. AID PROJECT				

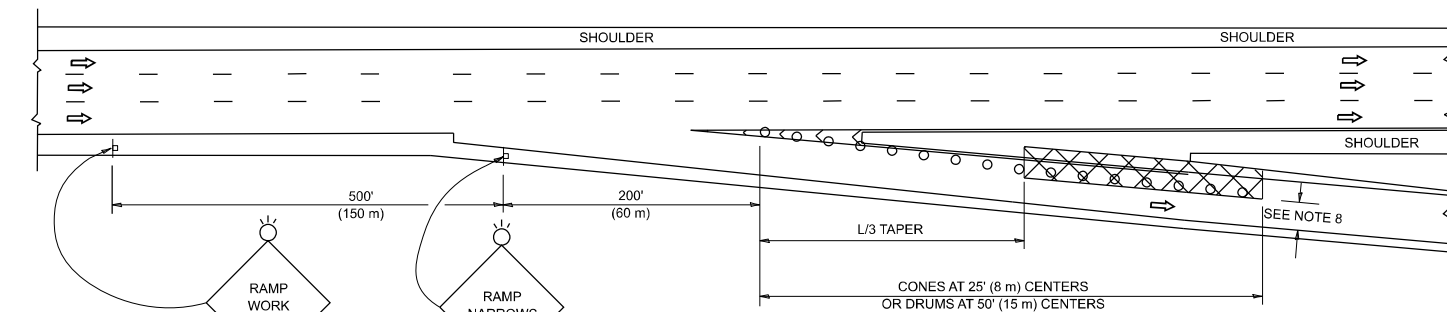
PARTIAL RAMP CLOSURE DETAILS



TYPICAL ENTRANCE RAMP



TYPICAL EXIT RAMP



TYPICAL EXIT RAMP

SYMBOLS

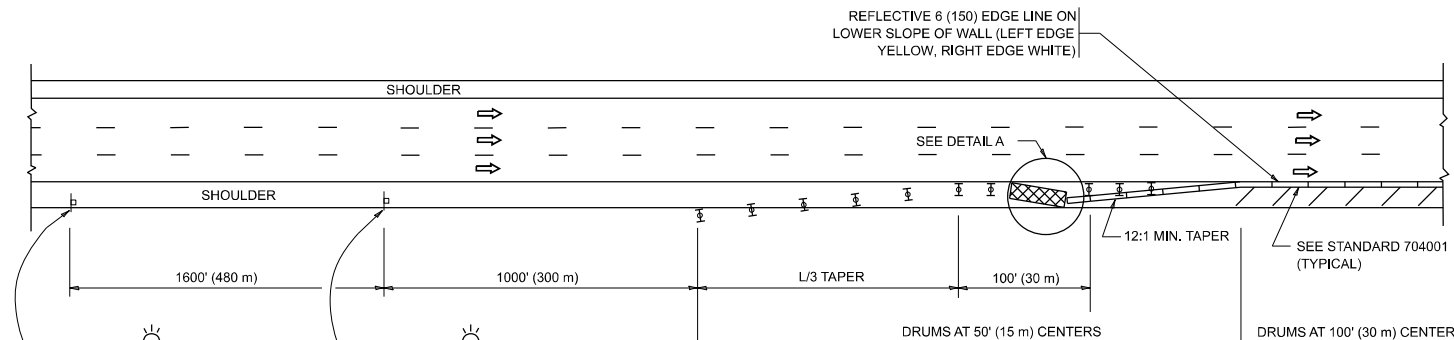
- ACTIVE WORK AREA
- SIGN ON PORTABLE OR PERMANENT SUPPORT
- FLAGGER WITH CONTROL SIGN
- TYPE II BARRICADE OR DRUM
- CONE, DRUM OR BARRICADE
- IMPACT ATTENUATOR OF TYPE AND TEST LEVEL SPECIFIED

GENERAL NOTES:

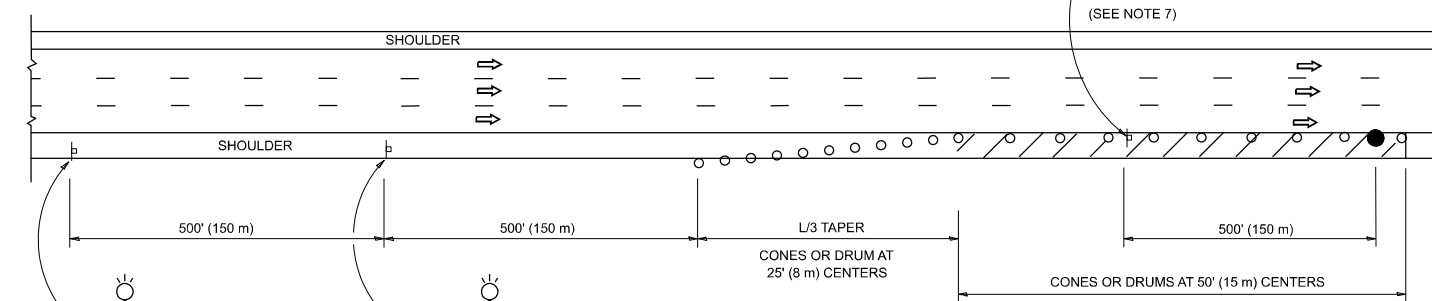
- THE "L" DISTANCE EQUALS:

SPEED LIMIT	FORMULAS
45 mph (80 km/h) OR GREATER:	METRIC ENGLISH L=0.85(W)(S) L=W(S)
W = WIDTH OF OFFSET IN FEET (METERS)	
S = NORMAL POSTED SPEED MPH (KM/H)	
- TYPE II BARRICADES OR DRUMS ARE REQUIRED FOR ALL NIGHTTIME CLOSURES. TYPE II BARRICADES OR DRUMS WITH MONODIRECTIONAL STEADY BURN LIGHTS ARE REQUIRED FOR DELINEATING OBSTACLES, EXCAVATIONS, OR HAZARDS EXCEEDING 100 FT (30m) IN LENGTH AT NIGHT.
- ALL SIGNS SHALL BE POST MOUNTED IF THE CLOSURE TIME EXCEEDS FOUR DAYS.
- FLASHING LIGHTS SHALL BE USED DURING THE HOURS OF DARKNESS AND SHALL BE INSTALLED ABOVE THE FIRST TWO SETS OF SIGNS.

SHOULDER CLOSURE DETAILS

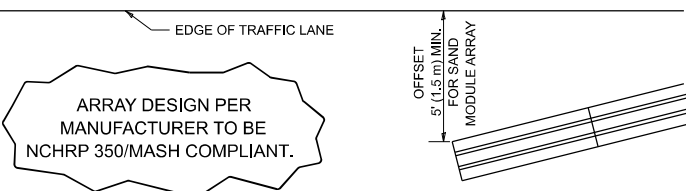


PERMANENT SHOULDER CLOSURE



TEMPORARY SHOULDER CLOSURE

- THIS DETAIL IS USED WHERE:
- VEHICLES, EQUIPMENT, WORKERS OR THEIR ACTIVITIES ENCR OACH IN AN AREA CLOSER THAN 15' (4.5 m) TO THE EDGE OF PAVEMENT FOR A PERIOD IN EXCESS OF 15 MINUTES.



**DETAIL "A"
IMPACT ATTENUATOR, TEMPORARY
(SEE NOTE 5)**

- THE IMPACT ATTENUATOR, TEMPORARY IS NOT REQUIRED WHEN THE TEMPORARY CONCRETE BARRIER WALL IS PROTECTED BY OR IS TIED INTO THE EXISTING GUARDRAIL. IF OFFSET IS LESS THAN 5 FEET USE NARROW USE TYPE DEVICE TO MEET NCHRP350/MASH.
- AUTHORIZATION FROM THE DISTRICT'S BUREAU OF TRAFFIC IS REQUIRED FOR ALL FREEWAY CLOSURES.
- THE FLAGGER AND FLAGGER SIGN ARE REQUIRED AT THE ABOVE WORK SITES WHEN:
 - FOUR OR MORE WORK VEHICLES ENTER THE TRAFFIC LANES IN A ONE HOUR PERIOD.
 - THE WORK ACTIVITY REQUIRES FREQUENT ENCR OACHMENT INTO THE LANE OPEN TO TRAFFIC.
 THE FLAGGER SHALL BE STATIONED APPROXIMATELY 100' (30 m) TO 200' (60 m) IN ADVANCE OF THE WORKERS.
- 12' MIN. WIDTH TANGENT SECTION
16' MIN. WIDTH CURVE SECTION.
- TEMPORARY SHOULDER AND NON-SYSTEM INTERCHANGE PARTIAL RAMP CLOSURES ARE ALLOWED WEEKDAYS BETWEEN 9:00 A.M. AND 3:00 P.M. AND BETWEEN 7:00 P.M. AND 5:00 A.M. OR AS APPROVED BY THE EXPRESSWAY TRAFFIC OPERATIONS ENGINEER. PERMANENT SHOULDER AND PARTIAL RAMP CLOSURES WILL ONLY BE PERMITTED IF CALLED FOR IN THE PLANS OR AS APPROVED BY THE EXPRESSWAY OPERATIONS ENGINEER.

ALL DIMENSIONS ARE IN INCHES (MILLIMETERS) UNLESS OTHERWISE SHOWN.

MODEL: TC-17 (Sheet)
FILE NAME: c:\p\work\wvictor\lawrence.demanche\0951415\TC-17.dgn

USER NAME = lawrence.demanche	DESIGNED -	REVISED - M.D. 06-13
	DRAWN - D.W.S.	REVISED - M.D. 01-18
PLOT SCALE = 0.08333317' / in.	CHECKED -	REVISED - M.D. 10-20
PLOT DATE = 10/2/2025	DATE - 11-96	REVISED - D.S. 05-25

**STATE OF ILLINOIS
DEPARTMENT OF TRANSPORTATION**

**TRAFFIC CONTROL DETAILS FOR FREEWAY
SHOULDER CLOSURES AND PARTIAL RAMP CLOSURES**

SCALE: NONE SHEET 1 OF 1 SHEETS STA. TO STA.

F.A.P. RTE.	SECTION	COUNTY	TOTAL SHEETS	SHEET NO.
			25	23
TC-17			CONTRACT NO.	
ILLINOIS FED. AID PROJECT				

MODEL: Plan Signage (Sheet)
 FILE NAME: Z:\DOTCAD_ORB\Folder Master\Master_Files\DOTCAD_CONNECT\Configuration\Organization\Civil\DOT_Standards\Drawings\Sheet_Standards\Civil_Named_Boundary_Sheet\Seeds.dgn

ROUTE MARKERS

FOR U.S. ROUTES
M1-40-2424

FOR ILLINOIS ROUTES
M1-50-2424

MAIN STREET
 R.R. UNMARKED ROUTES
 SPECIAL 24" x 18" VARIABLE
 4" BLACK LETTERS ON WHITE
 REFLECTIVE BACKGROUND

ARROWS SIGNS

M5-1L-2115

M5-1R-2115

M6-1-2115

M6-1-2115

M6-3-2115

CARDINAL DIRECTION & DETOUR SIGNS

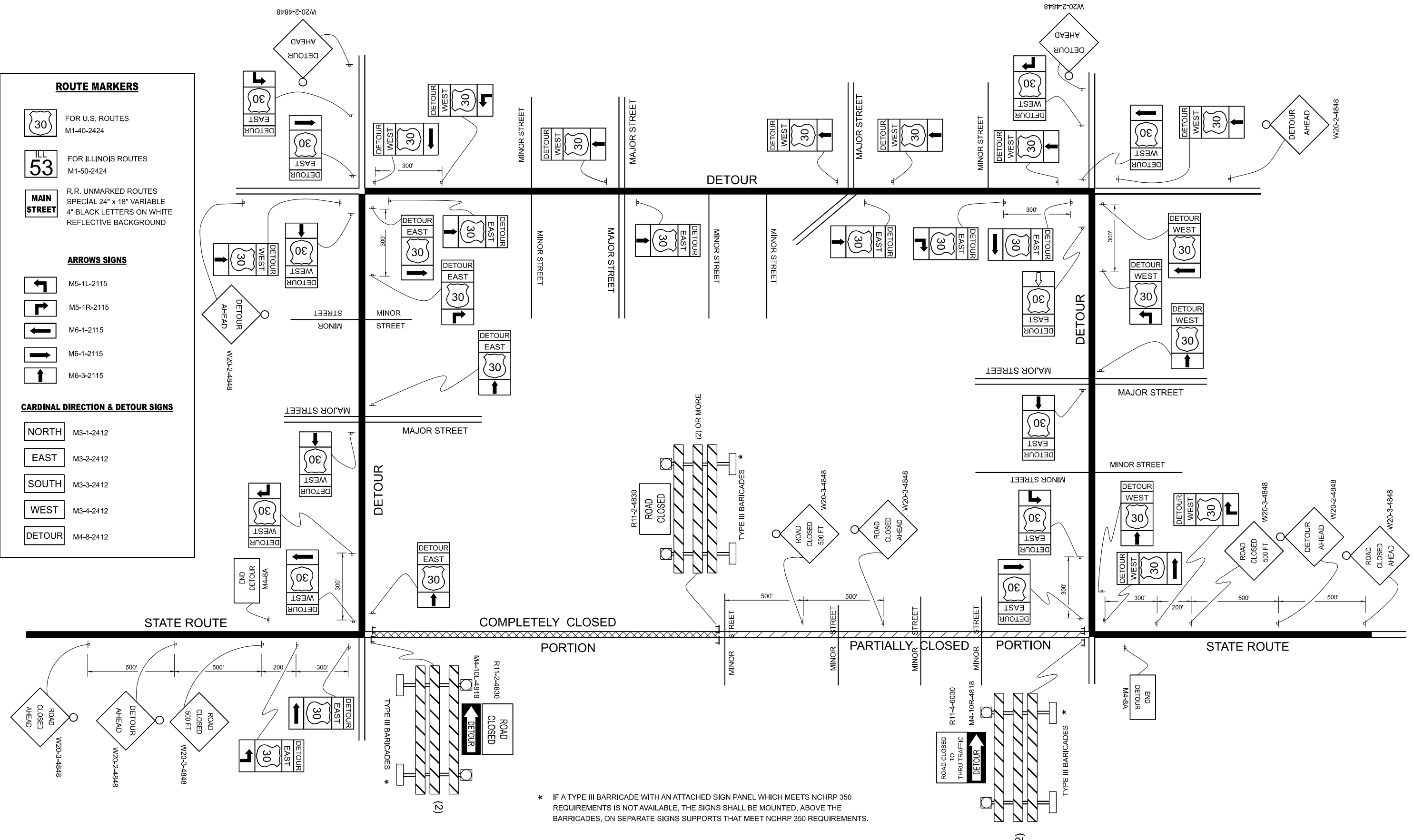
NORTH M3-1-2412

EAST M3-2-2412

SOUTH M3-3-2412

WEST M3-4-2412

DETOUR M4-8-2412



* IF A TYPE III BARRICADE WITH AN ATTACHED SIGN PANEL WHICH MEETS NCHRP 350 REQUIREMENTS IS NOT AVAILABLE, THE SIGNS SHALL BE MOUNTED, ABOVE THE BARRICADES, ON SEPARATE SIGNS SUPPORTS THAT MEET NCHRP 350 REQUIREMENTS.

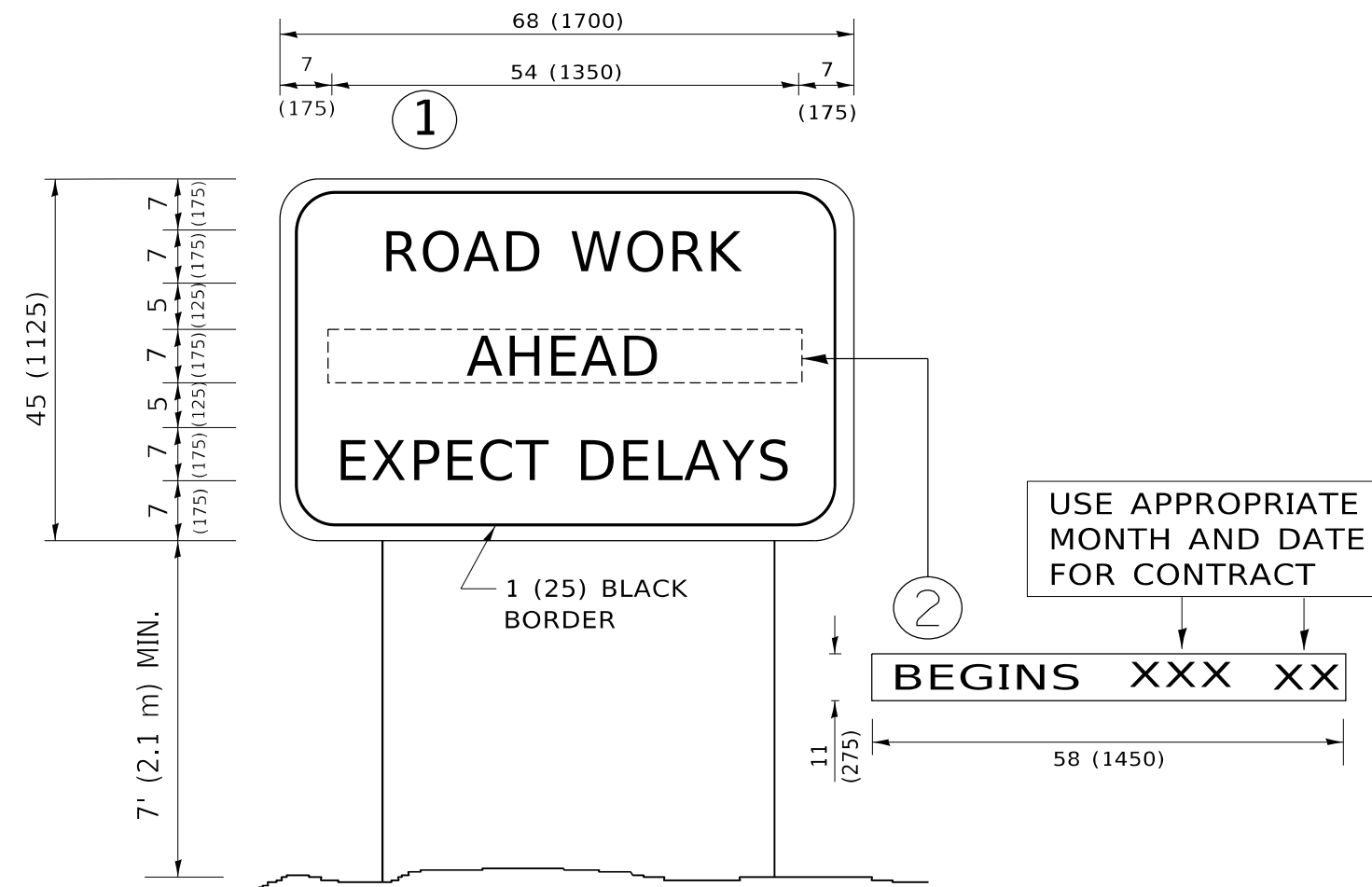
USER NAME = brad.gagliano	DESIGNED -	REVISED - 10-18-02
PLOT SCALE = 0.083333317' / in.	DRAWN -	REVISED - B. BORO 09-14-09
PLOT DATE = 8/30/2023	CHECKED -	REVISED -
	DATE -	REVISED -

**STATE OF ILLINOIS
 DEPARTMENT OF TRANSPORTATION**

**DETOUR SIGNING
 FOR CLOSING STATE HIGHWAYS**

SCALE: NONE SHEET 1 OF 1 SHEETS STA. TO STA.

F.A. RTE.	SECTION	COUNTY	TOTAL SHEETS	SHEET NO.
	TC-21		25	24
ILLINOIS FED. AID PROJECT			CONTRACT NO.	



NOTES:

1. USE BLACK LETTERING ON ORANGE BACKGROUND.
2. ERECT SIGNS IN ADVANCE OF THE LOCATION FOR THE "ROAD CONSTRUCTION AHEAD" SIGN AT LOCATIONS AS DIRECTED BY THE ENGINEER.
3. ERECT SIGN ① WITH INSTALLED PANEL ② ONE WEEK PRIOR TO THE START OF CONSTRUCTION.
4. REMOVE PANEL ② SOON AFTER THE START OF CONSTRUCTION.
5. SEE SPECIAL PROVISION FOR "TEMPORARY INFORMATION SIGNING" FOR ADDITIONAL INFORMATION.
6. ONE SIGN ASSEMBLY EQUALS 25.70 SQ. FT. (2.3 SQ. M.)
7. SHALL BE PAID FOR AS TEMPORARY INFORMATION SIGNING.

ALL DIMENSIONS ARE IN INCHES (MILLIMETERS) UNLESS OTHERWISE SHOWN.

MODEL: D:\draft
 FILE NAME: p:\1108\BEBIDNTEG\Illinois.gov\RWIDOT\Documents\DOT_Offices\District 1\Projects\DH\5422\240\CAD\Drawings\CAD\sheet1122.dgn

USER NAME = footemj	DESIGNED -	REVISED - R. MIRS 09-15-97
	DRAWN -	REVISED - R. MIRS 12-11-97
PLOT SCALE = 50.0000 ' / in.	CHECKED -	REVISED - T. RAMMACHER 02-02-99
PLOT DATE = 3/4/2019	DATE -	REVISED - C. JUCIUS 01-31-07

**STATE OF ILLINOIS
DEPARTMENT OF TRANSPORTATION**

**ARTERIAL ROAD
INFORMATION SIGN**

SCALE: NONE SHEET 1 OF 1 SHEETS STA. TO STA.

F.A. RTE.	SECTION	COUNTY	TOTAL SHEETS	SHEET NO.
			25	25
TC-22			CONTRACT NO.	
ILLINOIS FED. AID PROJECT				