

STATE OF ILLINOIS
DEPARTMENT OF TRANSPORTATION

F.A.P. RTE.	SECTION	COUNTY	TOTAL SHEETS	SHEET NO.
*	(2626.2-4B-R(85)) BP 25	COOK	13	1
		ILLINOIS	CONTRACT NO. 80B55	
* FAP 347, MS 3460C				

FOR INDEX OF SHEETS, SEE SHEET NO. 2

THIS IMPROVEMENT IS IN THE CITY OF CHICAGO

PROPOSED HIGHWAY PLANS

LOCATION 1: FAP 347 (ROOSEVELT RD.) OVER I-90/94 (DAN RYAN EXPWY)
LOCATION 2: MS 3460C (WILSON AVE.) OVER I-94 (EDENS EXPWY)

SECTION : (2626.2-4B-R(85)) BP 25

**BRIDGE PAINTING
COOK COUNTY
C-91-050-26**

LOCATION #1:
ROOSEVELT RD OVER I-90/94 (DAN RYAN EXPWY)
SN: 016-0478.

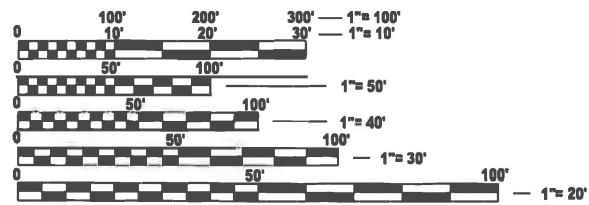
LOCATION #2:
WILSON AVE OVER I-94 (EDENS RYAN EXPWY)
SN: 016-2038.

2024 ADT
I-94 AT ROOSEVELT RD = 206,100
I-94 AT WILSON AVE = 122,800

POSTED SPEED LIMITS
I-94 AT ROOSEVELT RD = 45 MPH
I-94 AT WILSON AVE = 55 MPH

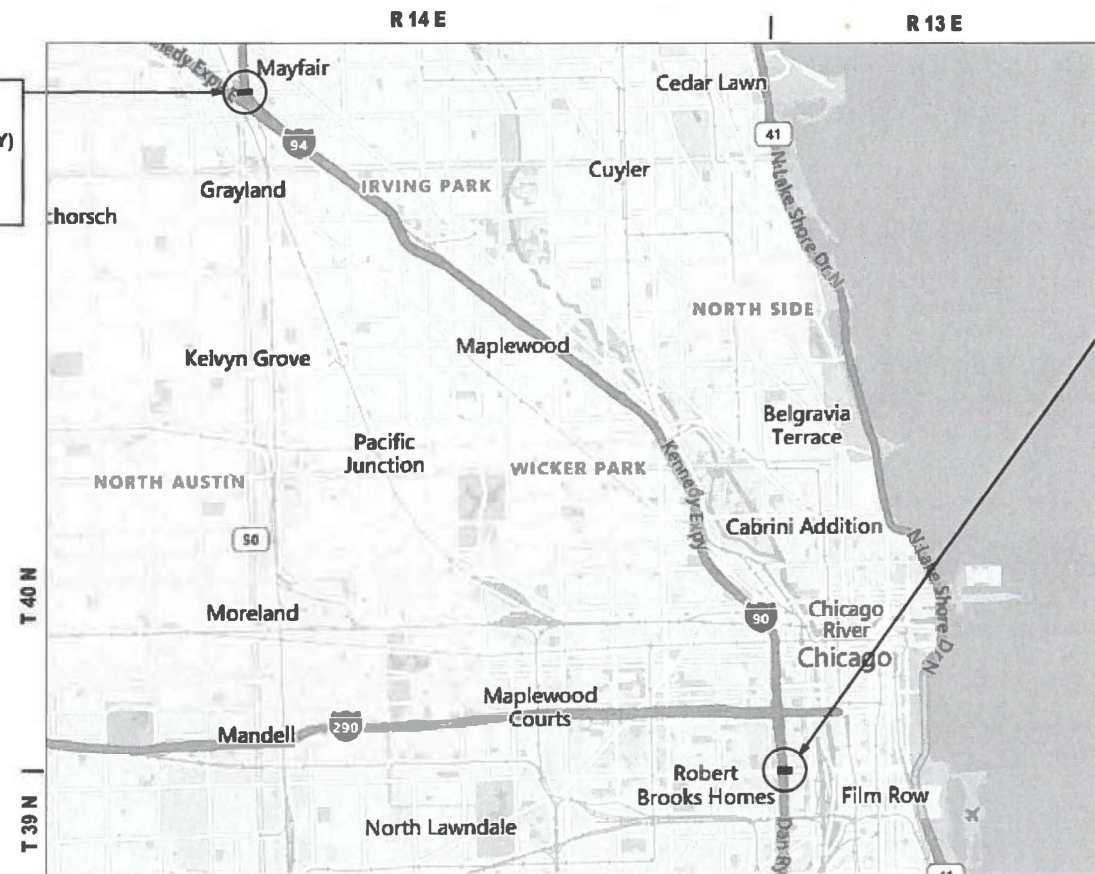
LOCATION #2:
WILSON AVE OVER I-94 (EDENS EXPWY)
SN: 016-2038.
CITY OF CHICAGO

LOCATION #1:
ROOSEVELT RD OVER I-90/94 (DAN RYAN EXPWY)
SN: 016-0478.
CITY OF CHICAGO



FULL SIZE PLANS HAVE BEEN PREPARED USING STANDARD ENGINEERING SCALES. REDUCED SIZED PLANS WILL NOT CONFORM TO STANDARD SCALES. IN MAKING MEASUREMENTS ON REDUCED PLANS, THE ABOVE SCALES MAY BE USED.

C.U.A.N.
CHICAGO UTILITY ALERT NETWORK
1-312-744-7000



PROJECT ENGINEER: DANIEL WILGREEN (847) 705-4240
PROJECT MANAGER: J.ALAIN MIDY (847) 221-3056

CHICAGO CITY TOWNSHIP

CONTRACT NO. 80B55

D-91-044-26



LOCATION OF SECTION INDICATED THIS: - [Symbol]

**STATE OF ILLINOIS
DEPARTMENT OF TRANSPORTATION**

SUBMITTED Oct 15th 2025

[Signature]
REGIONAL ENGINEER

March 20 2026

[Signature]
ENGINEER OF DESIGN AND ENVIRONMENT

March 20 2026

[Signature]
DIRECTOR OF HIGHWAYS PROJECT IMPLEMENTATION

**PRINTED BY THE AUTHORITY
OF THE STATE OF ILLINOIS**

INDEX OF SHEETS

STATE STANDARDS

GENERAL NOTES

SHEET NO. DESCRIPTION

STANDARD NO. DESCRIPTION

1	COVER SHEET	000001-09	STANDARD SYMBOLS, ABBREVIATIONS AND PATTERNS
2	INDEX OF SHEETS, STATE STANDARDS AND GENERAL NOTES	701101-05	OFF-ROAD OPERATIONS, MULTILANE, IS' TO 24" FROM PAVEMENT EDGE
3	SUMMARY OF QUANTITIES	701106-02	OFF-ROAD OPERATIONS, MULTILANE, MORE THAN 15' (4.5 M) AWAY
4-6	EXISTING BRIDGE PLANS (SN 016-0478)	701400-12	APPROACH TO LANE CLOSURE FREEWAY/EXPRESSWAY
7-10	EXISTING BRIDGE PLANS (SN 016-2038)	701401-13	LANE CLOSURE FREEWAY/EXPRESSWAY
11	ENTRANCE AND EXIT RAMP CLOSURE DETAILS (TC-08)	701411-09	LANE CLOSURE, MULTILANE AT ENTRANCE OR EXIT RAMP FOR SPEEDS ≥ 45 MPH
12	TRAFFIC CONTROL DETAILS FOR FREEWAY SINGLE & MULTI-LANE WEAVE (TC-09)	701428-01	TRAFFIC CONTROL SETUP AND REMOVAL FREEWAY/EXPRESSWAY
13	TRAFFIC CONTROL DETAILS FOR FREEWAY SHOULDER CLOSURES AND PARTIAL RAMP CLOSURES (TC-17)	701446-11	TWO LANE CLOSURE FREEWAY/EXPRESSWAY
		701901-11	TRAFFIC CONTROL DEVICES

- BEFORE STARTING ANY EXCAVATION, THE CONTRACTOR SHALL CALL "C.U.A.N." (CHICAGO UTILITY ALERT NETWORK) AT (312) 744-7000 FOR FIELD LOCATIONS OF BURIED ELECTRIC, TELEPHONE, AND GAS UTILITIES.. 48 HOUR NOTIFICATION IS REQUIRED.
- THE CONTRACTOR SHALL COORDINATE CONSTRUCTION ACTIVITIES WITH UTILITY COMPANIES AND THE CITY OF CHICAGO AND OBTAIN ALL NECESSARY PERMITS.
- THE CONTRACTOR WILL NOT BE ALLOWED TO SET UP A YARD OR FIELD OFFICE ON STATE PROPERTY WITHOUT WRITTEN PERMISSION FROM THE DEPARTMENT.
- THESE PLANS HAVE BEEN PREPARED FROM NOTES RECEIVED FROM THE BUREAU OF MAINTENANCE BRIDGE INSPECTORS.
- IT SHALL BE THE CONTRACTOR'S RESPONSIBILITY TO PROTECT AND MAINTAIN THE EXISTING BRIDGE LIGHTING AT ANY LOCATIONS THAT LIGHTING IS ENCOUNTERED ADJACENT TO AN AREA TO BE CLEANED AND PAINTED.
- IT SHALL BE THE CONTRACTOR'S RESPONSIBILITY TO VERIFY ALL DIMENSIONS AND CONDITIONS EXISTING IN THE FIELD PRIOR TO CONSTRUCTION AND ORDERING OF MATERIALS.
- WHEN ARTIFICIAL LIGHTING IS UTILIZED IN NIGHTTIME OPERATIONS, THE CONTRACTOR SHALL EXERCISE THE UTMOST PRECAUTIONS PREVENTING ADVERSE VISIBILITY TO THE MOTORING PUBLIC AND ADJACENT RESIDENTIAL AREAS.
- THE CONTRACTOR SHALL TAKE NECESSARY PRECAUTIONS WHEN WORKING NEAR THE ABUTMENTS IF ELECTRICAL JUNCTIONS BOXES AND ATTACHED CONDUITS ARE PRESENT.
- THE CONTRACTOR WILL NOT BE ALLOWED TO INSTALL LANE CLOSURES OR SIDEWALK CLOSURES ON ANY ARTERIAL ROADWAY WITHOUT WRITTEN PERMISSION FROM THE DEPARTMENT
- THE CONTRACTOR SHALL CONTACT THE IDOT EXPRESSWAY TRAFFIC CONTROL SUPERVISOR DISTRICT ONE CARLOS AT CARLOS.MUNOZ@ILLINOIS.GOV A MINIMUM OF 72 HOURS IN ADVANCE OF THE BEGINNING OF WORK.
- THE CONTRACTOR SHALL REQUEST AND GAIN APPROVAL FROM THE ILLINOIS DEPARTMENT OF TRANSPORTATION'S EXPRESSWAY TRAFFIC OPERATIONS ENGINEER AT WWW.IDOTLCS.COM TWENTY-FOUR (24) HOURS IN ADVANCE OF ALL DAILY LANE, RAMP, AND SHOULDER CLOSURES AND SEVEN DAYS IN ADVANCE OF ALL PERMANENT AND WEEKEND CLOSURES ON ALL FREEWAYS AND/OR EXPRESSWAYS IN DISTRICT ONE. THIS ADVANCE NOTIFICATION IS CALCULATED BASED ON THE WORKWEEK OF MONDAY THROUGH FRIDAY AND SHALL NOT INCLUDE WEEKENDS OR HOLIDAYS.
- CONTRACTOR SHALL REFRAIN FROM PARKING VEHICLES, EQUIPMENT, AND MATERIALS BETWEEN THE I-90/94 WEST MAINLINE AND THE WILSON AVENUE EXIT RAMP. THIS AREA IS MAINTAINED BY GATEWAY GREEN AND ACCESS IS NEEDED

GENERAL PAINT NOTES

- CLEANING AND PAINTING OF THE EXISTING STRUCTURAL STEEL SHALL BE AS SPECIFIED IN THE SPECIAL PROVISION FOR "CLEANING AND PAINTING EXISTING STEEL STRUCTURES".
- ALL ITEMS (SUCH AS, BUT NOT LIMITED TO: CONDUITS, BRACKETS AND DECK DRAINS) ATTACHED TO OUTSIDE OF THE FASCIA BEAMS SHOULD BE CLEANED AND PAINTED.
- LOCATION 1 & 2 (SN 016-0478 & SN 016-2038): ALL GIRDERS, BEAMS, BEARINGS AND OTHER STRUCTURAL STEEL, SHALL BE CLEANED PER NEAR WHITE BLAST CLEANING SSPC-SP10.
- ALL AREAS THAT ARE DESIGNATED TO BE CLEANED SHALL BE PAINTED ACCORDING TO THE REQUIREMENTS OF PAINT SYSTEM 1 -0Z/E/U. THE COLOR OF THE FINAL FINISH COAT FOR ALL INTERIOR STEEL SURFACES SHALL BE GRAY, MUNSELL NO 5B 7/1. THE COLOR OF THE FINAL FINISH COAT FOR THE EXTERIOR AND BOTTOM FLANGE OF THE FASCIA BEAMS SHALL BE REDDISH BROWN, MUNSELL NO 2, 5YR 3/4.
- A MINIMUM OF 2 AIR MONITORS AT EVERY LOCATION WILL BE REQUIRED TO MONITOR ABRASIVE BLASTING OPERATIONS. SEE SPECAL PROVISIONS FOR "CONTAINMENT AND DISPOSAL OF LEAD PAINT CLEANING RESIDUE".
- SSPC QP1 CERTIFICATION IS REQUIRED FOR THIS CONTRACT.

MODEL: GenNotesSh01 (Sheet)
FILE NAME: c:\pw_work\kwid\illinois.gov_baraa_alsmadi\illinois.gov_baraa_alsmadi\152830\0104426-shi-gennote.dgn

USER NAME = Baraa.alsmadi	DESIGNED -	REVISED -
	DRAWN -	REVISED -
PLOT SCALE = 0.16666633' / in.	CHECKED -	REVISED -
PLOT DATE = 2/25/2026	DATE -	REVISED -

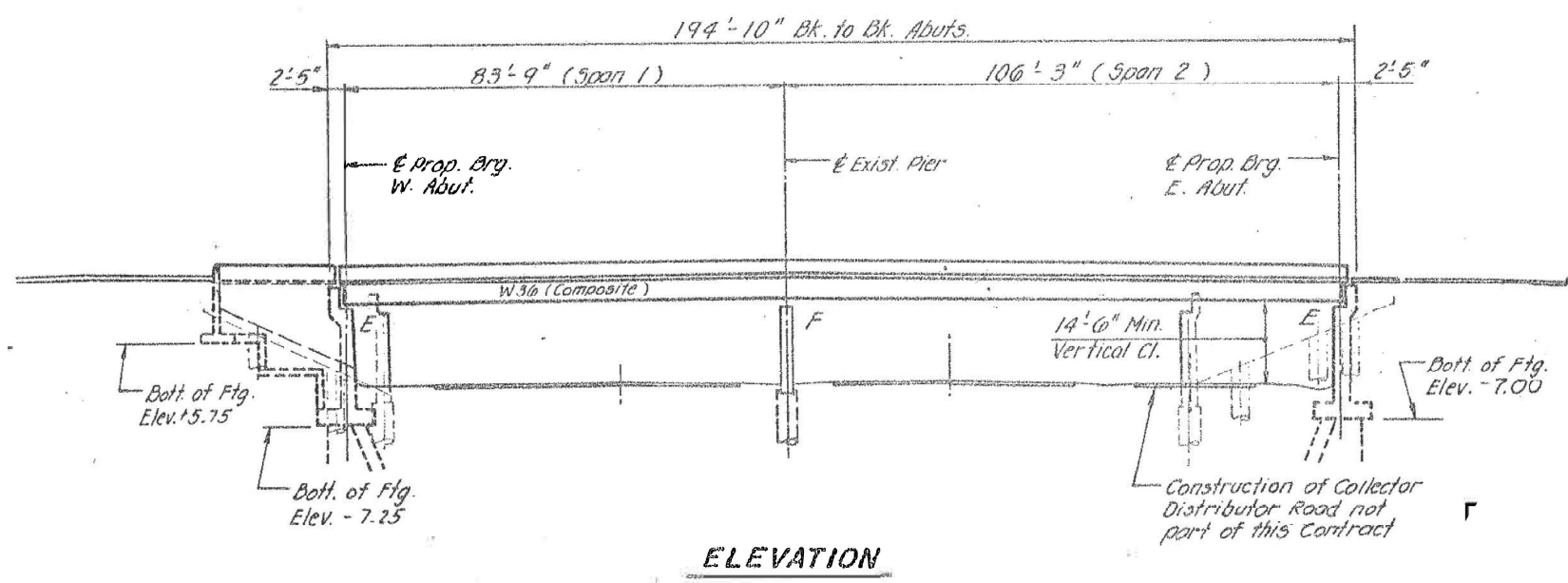
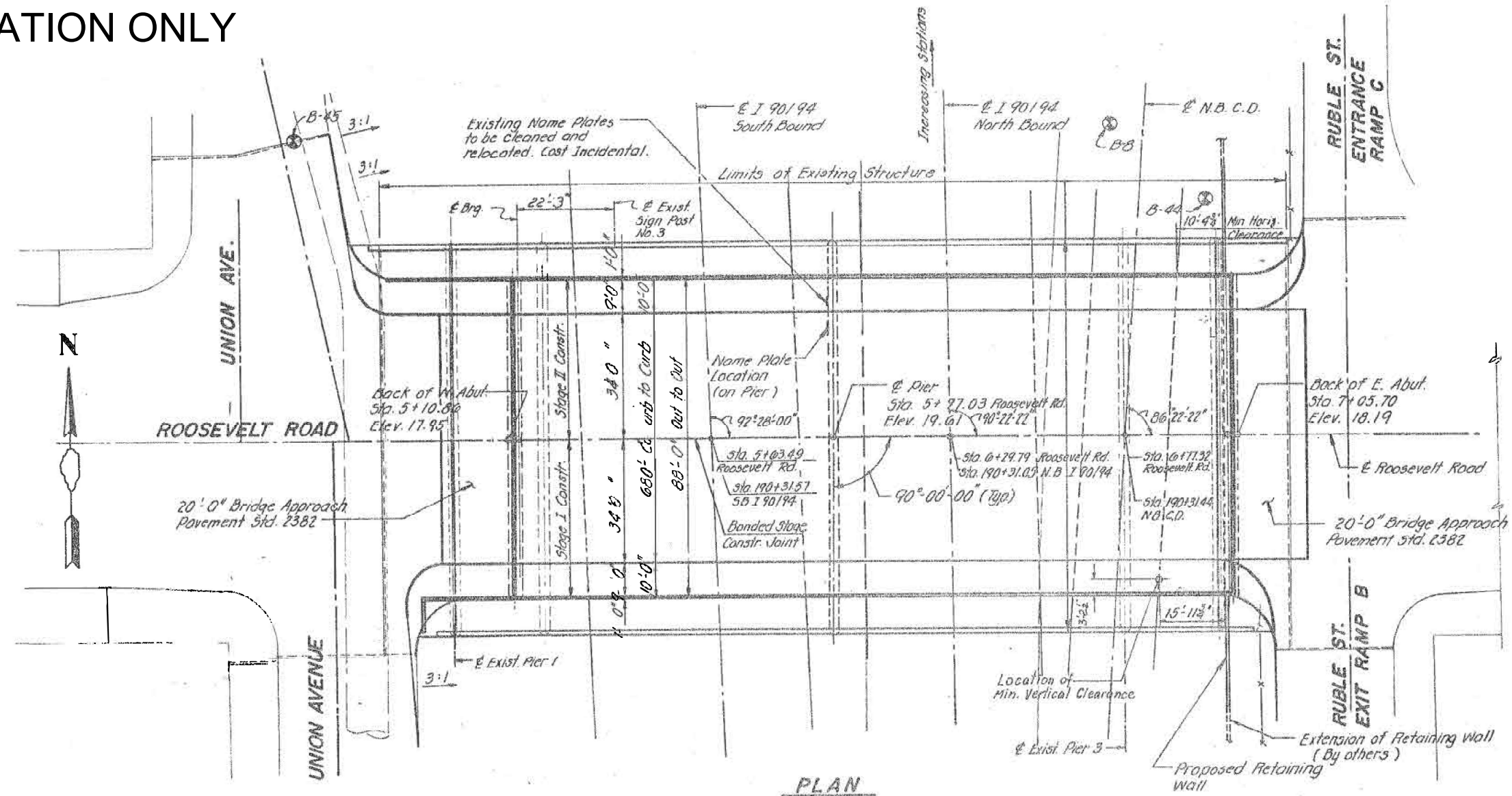
**STATE OF ILLINOIS
DEPARTMENT OF TRANSPORTATION**

**INDEX OF SHEETS, STATE STANDARDS, AND GENERAL NOTES
AT VARIOUS LOCATIONS**

SCALE: SHEET OF 1 SHEETS STA. TO STA.

F.A.P. RTE.	SECTION	COUNTY	TOTAL SHEETS	SHEET NO.
*	(2626.2-4B-R(85)) BP 25	COOK	13	2
CONTRACT NO. 80B55				
ILLINOIS FED. AID PROJECT				

FOR INFORMATION ONLY



MODEL: 016-0478 (3) [Sheet]
FILE NAME: c:\pwworking\illinois.gov\baraa.alsmadi\152830\0104426-sh-plan.dgn

USER NAME = Baraa.alsmadi	DESIGNED -	REVISED -
	DRAWN -	REVISED -
	CHECKED -	REVISED -
PLOT DATE = 10/15/2025	DATE -	REVISED -

**STATE OF ILLINOIS
DEPARTMENT OF TRANSPORTATION**

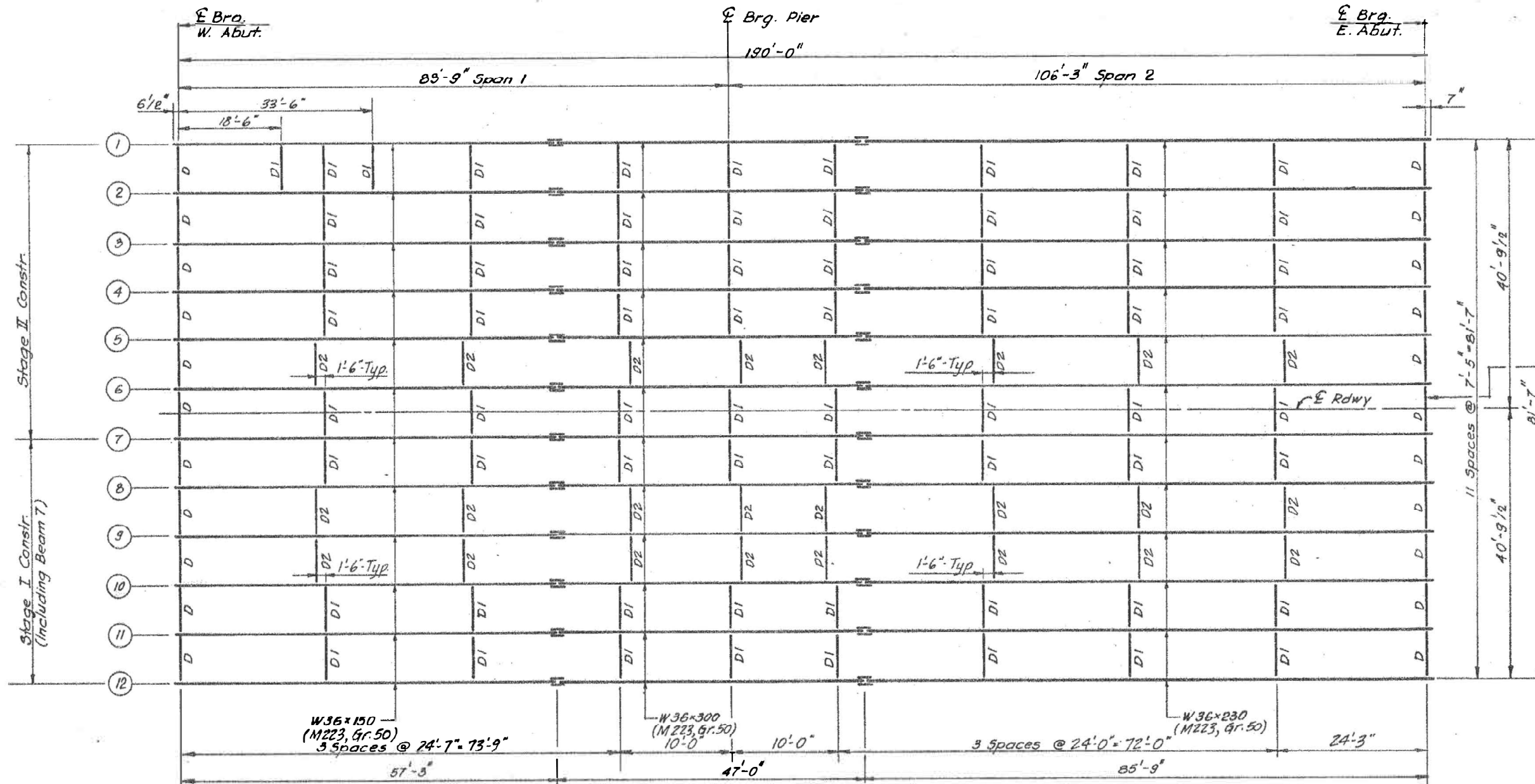
**GENERAL PLAN & ELEVATION
STRUCTURE NO. 016-0478**

SCALE: SHEET 1 OF 7 SHEETS STA. TO STA.

F.A.P. RTE.	SECTION	COUNTY	TOTAL SHEETS	SHEET NO.
*	(2626.2-4B-R(85)) BP 25	COOK	13	4
CONTRACT NO. 80B55				

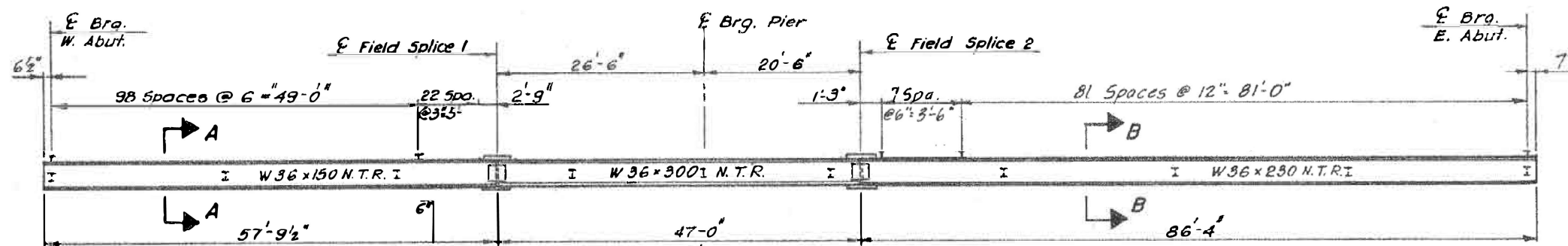
ILLINOIS FED. AID PROJECT

FOR INFORMATION ONLY



DIAPHRAGM

D = W12 X 40



MODEL: 016-0478 (1) [Sheet]
FILE NAME: c:\pwworking\illinois.gov\baraa.alsmadi\illinois\proj\152830\0104426-sh-plan.dgn

USER NAME = Baraa.alsmadi	DESIGNED -	REVISED -
	DRAWN -	REVISED -
	CHECKED -	REVISED -
PLOT DATE = 10/15/2025	DATE -	REVISED -

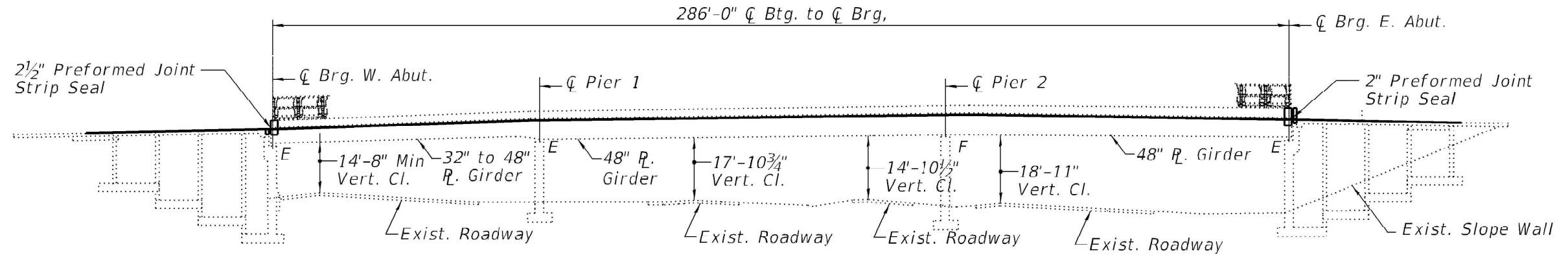
STATE OF ILLINOIS
DEPARTMENT OF TRANSPORTATION

FRAMING PLAN
STRUCTURE NO. 016-0478

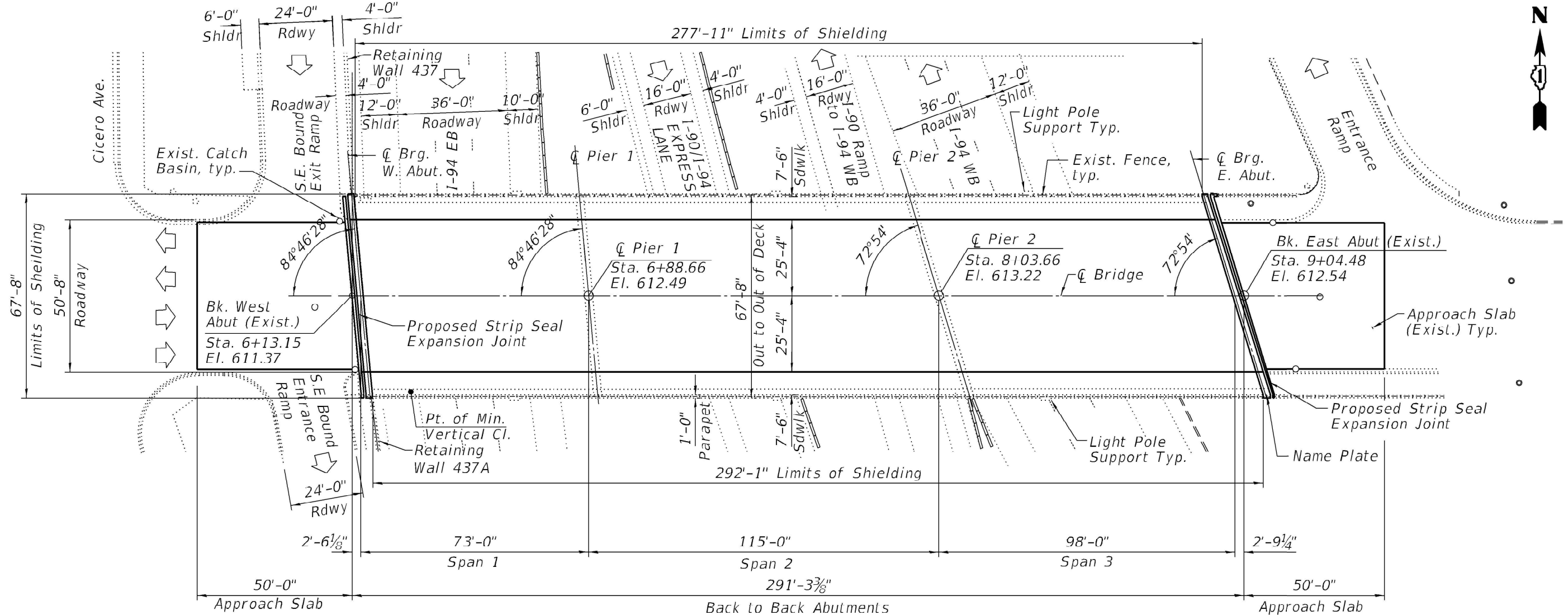
SCALE: SHEET 2 OF 7 SHEETS STA. TO STA.

F.A.P. RTE.	SECTION	COUNTY	TOTAL SHEETS	SHEET NO.
*	(2626.2-4B-R(85)) BP 25	COOK	13	5
CONTRACT NO. 80B55				
ILLINOIS FED. AID PROJECT				

FOR INFORMATION ONLY



ELEVATION



PLAN

MODEL: 016-2038 (4) [Sheet]
FILE NAME: c:\pwworking\illinois.gov\baraa.alsmadi\152830104426-sh-plan.dgn

USER NAME = Baraa.alsmadi	DESIGNED -	REVISED -
	DRAWN -	REVISED -
	CHECKED -	REVISED -
PLOT DATE = 10/15/2025	DATE -	REVISED -

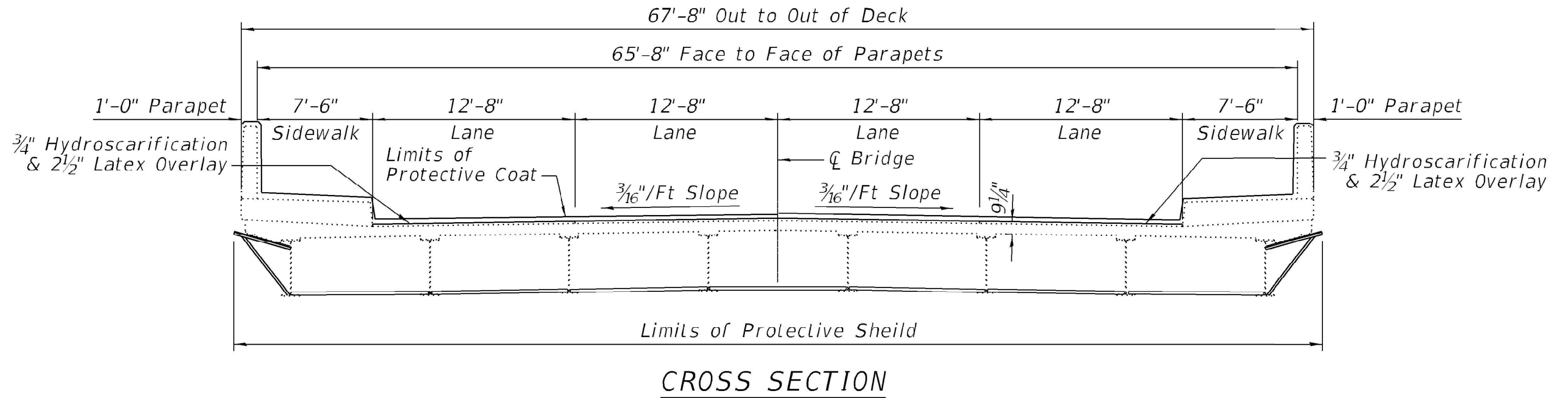
STATE OF ILLINOIS
DEPARTMENT OF TRANSPORTATION

GENERAL PLAN & ELEVATION
STRUCTURE NO. 016-2038

SCALE: SHEET 4 OF 7 SHEETS STA. TO STA.

F.A.P. RTE.	SECTION	COUNTY	TOTAL SHEETS	SHEET NO.
*	(2626.2-4B-R(85)) BP 25	COOK	13	7
CONTRACT NO. 80B55				
ILLINOIS FED. AID PROJECT				

FOR INFORMATION ONLY



MODEL: 016-2038 (5) [Sheet]
 FILE NAME: c:\p\work\project\illinois.gov_baraa_alsmadi\illinois.gov\152830\0104426-sh-clan.dgn

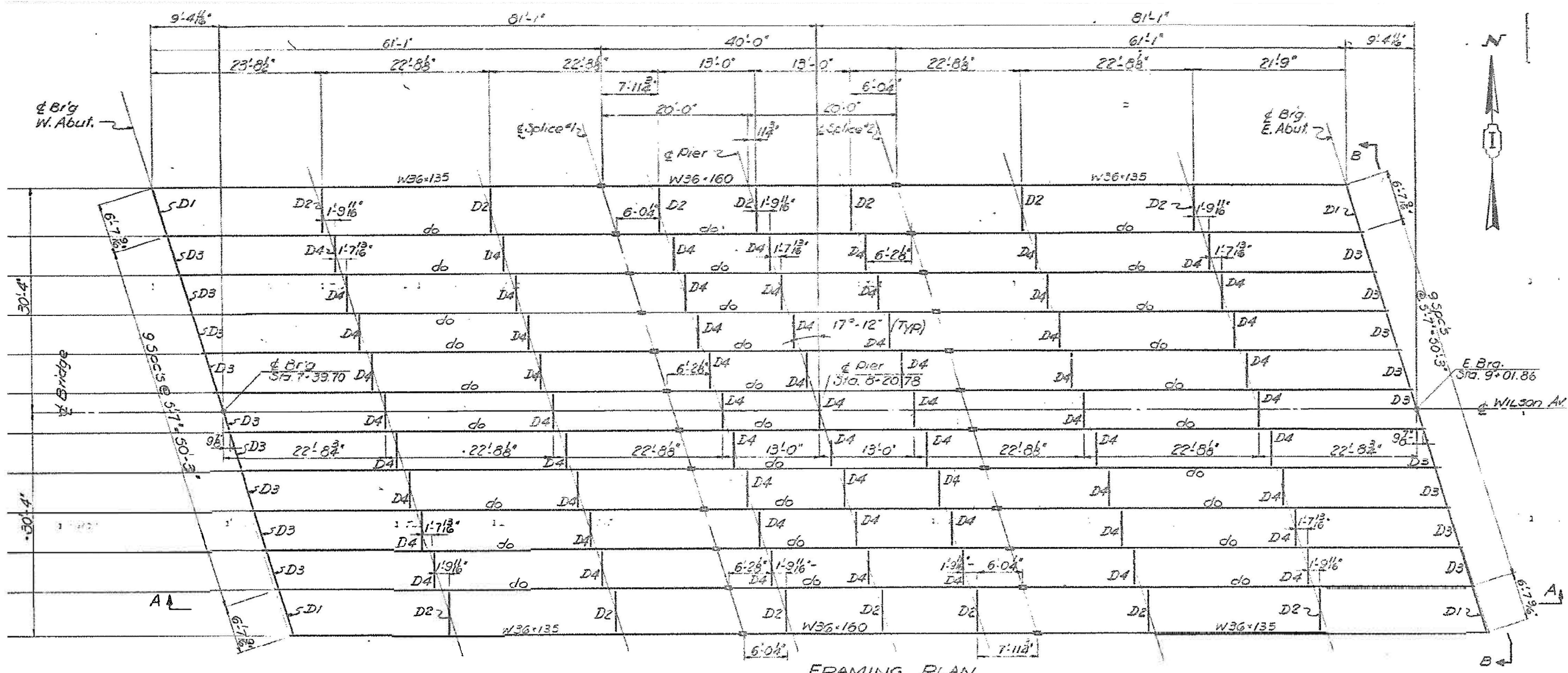
USER NAME = Baraa.alsmadi	DESIGNED -	REVISED -
	DRAWN -	REVISED -
	CHECKED -	REVISED -
PLOT DATE = 10/15/2025	DATE -	REVISED -

**STATE OF ILLINOIS
 DEPARTMENT OF TRANSPORTATION**

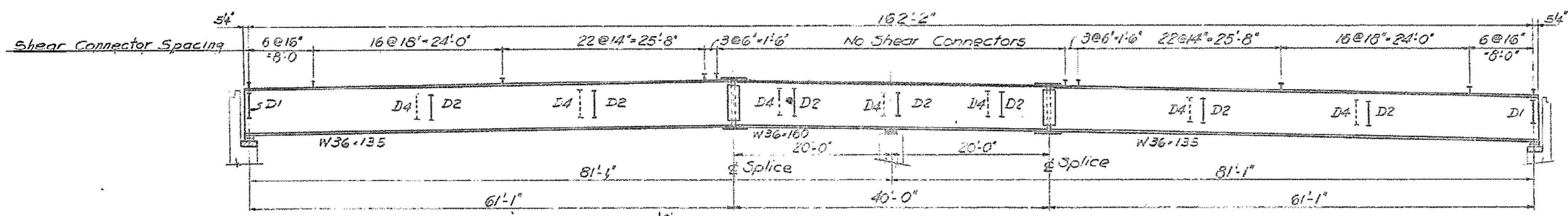
**CROSS SECTION
 STRUCTURE NO. 016-2038**

SCALE: SHEET 5 OF 7 SHEETS STA. TO STA.

F.A.P. RTE.	SECTION	COUNTY	TOTAL SHEETS	SHEET NO.
*	(2626.2-4B-R(85)) BP 25	COOK	13	8
CONTRACT NO. 80B55				
ILLINOIS FED. AID PROJECT				



FRAMING PLAN



SECTION A-A (TYPICAL)

FOR INFORMATION ONLY

MODEL: 016-2038 (6) [Sheet]
 FILE NAME: c:\pwworking\illinois.gov\baraa.alsmadi\illinois.gov\016-2038-01\04426-sfr-plan.dgn

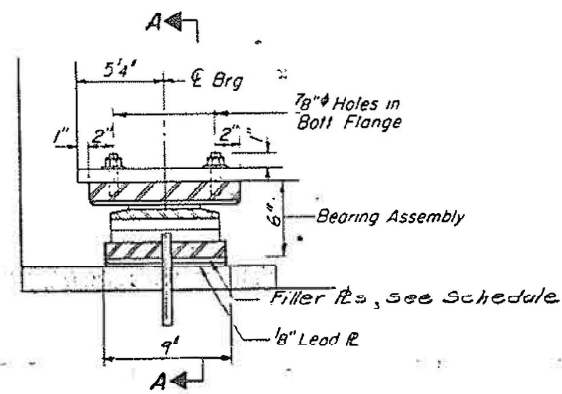
USER NAME - Baraa.alsmadi	DESIGNED -	REVISED -
	DRAWN -	REVISED -
	CHECKED -	REVISED -
PLOT DATE = 10/15/2025	DATE -	REVISED -

STATE OF ILLINOIS
DEPARTMENT OF TRANSPORTATION

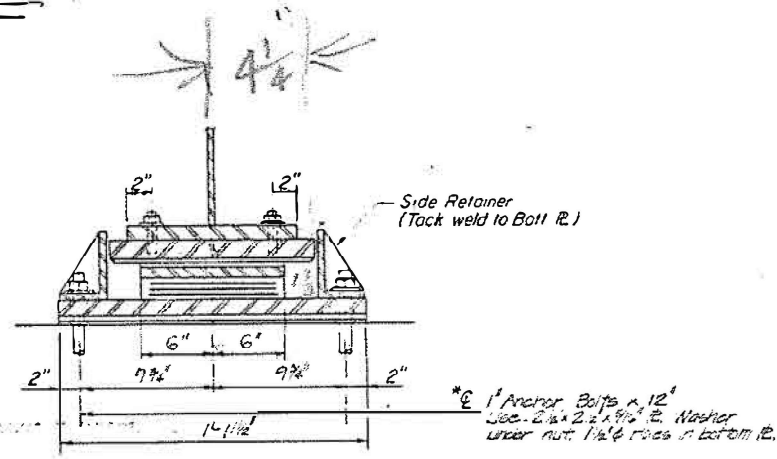
FRAMING PLAN
STRUCTURE NO. 016-2038

SCALE: SHEET 6 OF 7 SHEETS STA. TO STA.

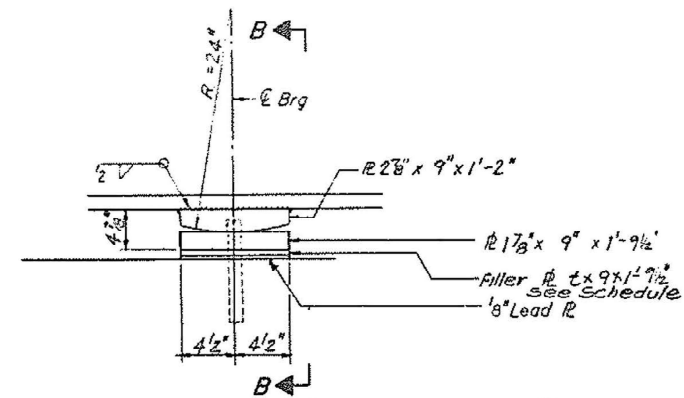
F.A.P. RTE.	SECTION	COUNTY	TOTAL SHEETS	SHEET NO.
	(2626.2-4B-R(85)) BP 25	COOK	13	9
CONTRACT NO. 80B55				
ILLINOIS FED. AID PROJECT				



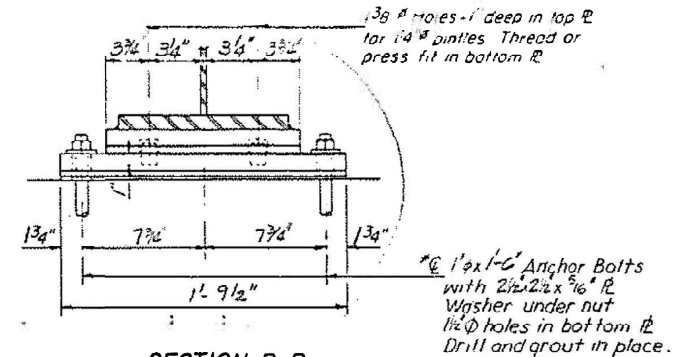
SECTION AT ABUT.



SECTION A-A



ELEVATION AT PIER

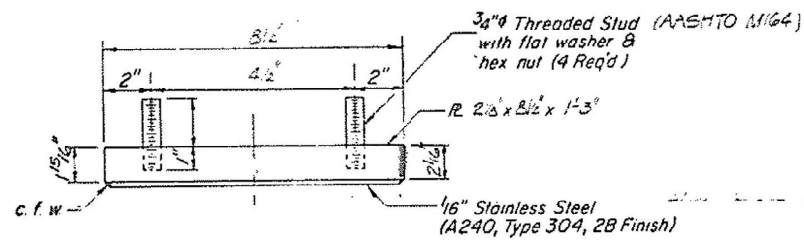


SECTION B-B

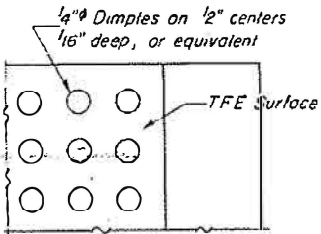
TYPE II TFE ELASTOMERIC EXP. BRG.

FIXED BEARING

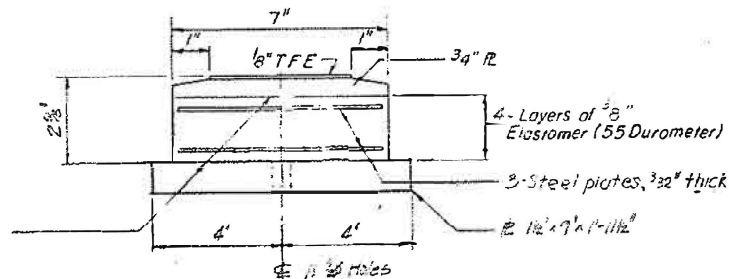
* Contractor shall check existing bearing pad elevations before fabricating Filler Plates.



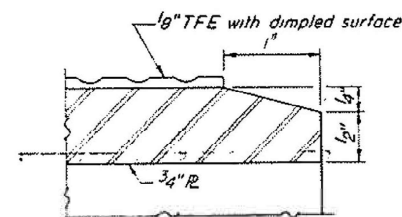
TOP BEARING ASSEMBLY



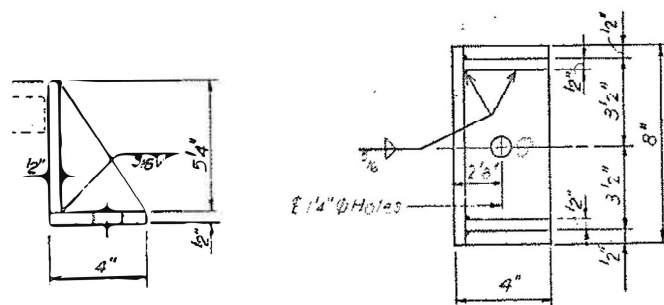
PLAN-TFE SURFACE



BOTTOM BEARING ASSEMBLY



SECTION THRU TFE



SIDE RETAINER

FOR INFORMATION ONLY

MODEL: 016-2038 (7) [Sheet]
FILE NAME: c:\pwworking\illinois.gov\baraa.alsmadi\illinois.gov\d1528301\04426-sh-clan.dgn

USER NAME = Baraa.alsmadi	DESIGNED -	REVISED -
	DRAWN -	REVISED -
	CHECKED -	REVISED -
PLOT DATE = 10/15/2025	DATE -	REVISED -

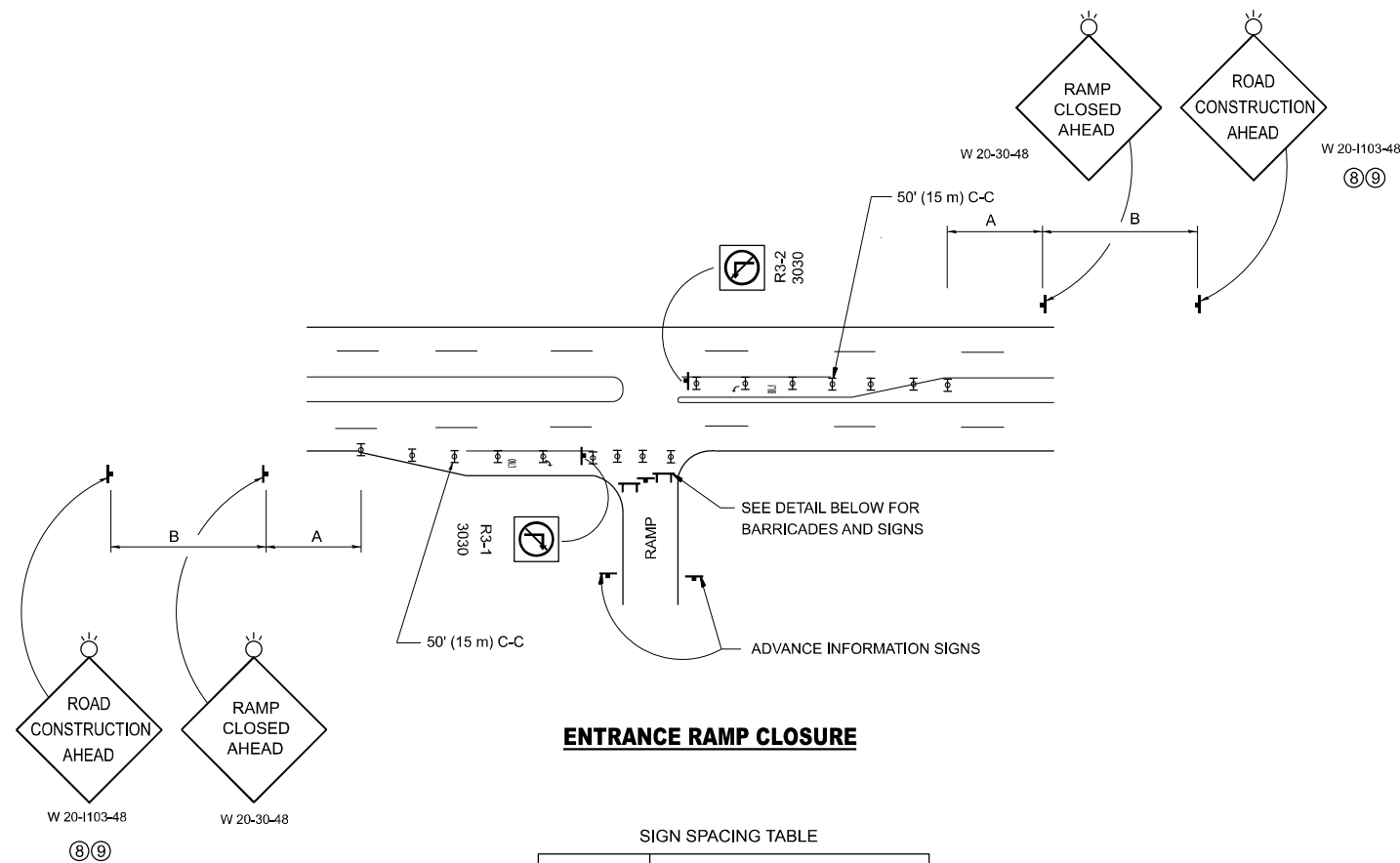
STATE OF ILLINOIS
DEPARTMENT OF TRANSPORTATION

BEARING DETAILS
STRUCTURE NO. 016-2038

SCALE: SHEET 7 OF 7 SHEETS STA. TO STA.

F.A.P. RTE.	SECTION	COUNTY	TOTAL SHEETS	SHEET NO.
*	(2626.2-4B-R(85)) BP 25	COOK	13	10
CONTRACT NO. 80B55				
ILLINOIS FED. AID PROJECT				

* FAP 347, MS 3460C

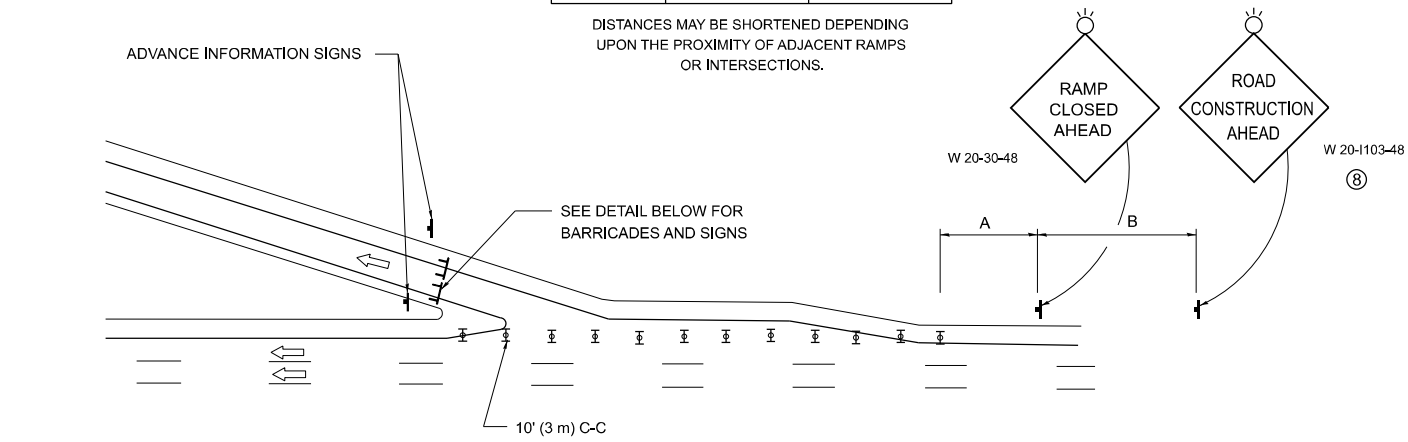


ENTRANCE RAMP CLOSURE

SIGN SPACING TABLE

FACILITY	DISTANCE BETWEEN SIGNS	
	A	B
EXPRESSWAY >24 HOURS	1000' (300 m)	1500' (450 m)
EXPRESSWAY ≤24 HOURS	500' (150 m)	500' (150 m)
ARTERIAL 55 MPH	500' (150 m)	500' (150 m)
ARTERIAL 50-45 MPH	350' (100 m)	350' (100 m)
ARTERIAL <45 MPH	200' (60 m)	200' (60 m)

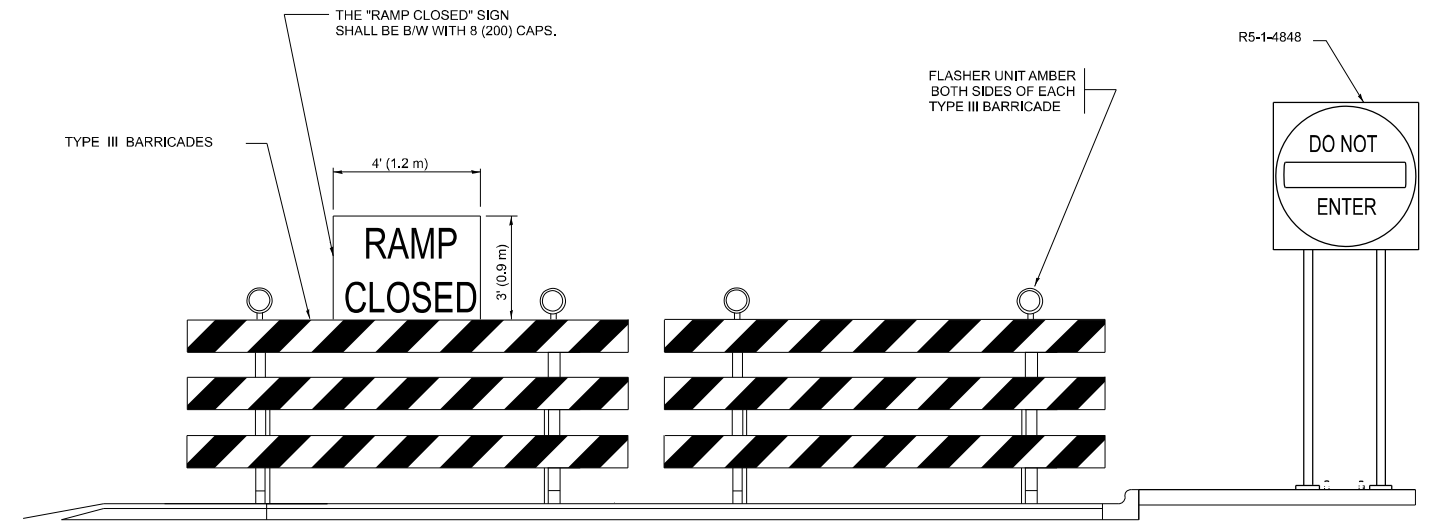
DISTANCES MAY BE SHORTENED DEPENDING UPON THE PROXIMITY OF ADJACENT RAMPS OR INTERSECTIONS.



EXIT RAMP CLOSURE

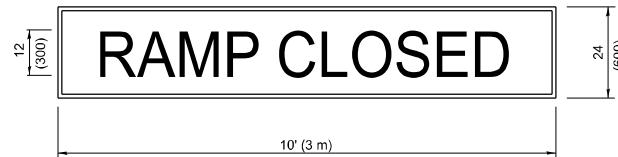
SYMBOLS

- ▬ TYPE II BARRICADE OR DRUM
- ▬ TYPE III BARRICADE WITH 2 FLASHING LIGHTS



DETAIL FOR REQUIRED BARRICADES & SIGNS

RAMP CLOSURE ADVANCE WARNING SIGN



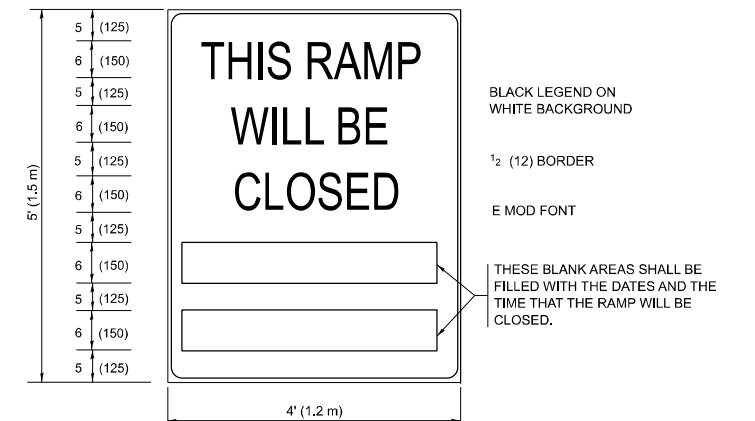
BLACK LEGEND ON ORANGE BACKGROUND MOUNTED DIAGONALLY
E MOD FONT
1 (25) BORDER

THESE SIGNS ARE REQUIRED ON ALL THE EXIT GUIDE SIGNS FOR EXIT RAMPS THAT WILL BE CLOSED FOR MORE THAN FOUR (4) CONSECUTIVE DAYS.

THESE SIGNS ARE REQUIRED ON BOTH SIDES OF THE RAMP, MINIMUM OF 1 WEEK IN ADVANCE OF THE CLOSURE.

THESE SIGNS SHALL BE FABRICATED AND PAID FOR ACCORDING TO THE TEMPORARY INFORMATION SIGNING SPECIAL PROVISION

RAMP CLOSURE ADVANCE INFORMATION SIGN



BLACK LEGEND ON WHITE BACKGROUND

1/2 (12) BORDER

E MOD FONT

THESE BLANK AREAS SHALL BE FILLED WITH THE DATES AND THE TIME THAT THE RAMP WILL BE CLOSED.

GENERAL NOTES:

- 1 CONES MAY BE SUBSTITUTED FOR DRUMS OR TYPE II BARRICADES DURING DAY OPERATIONS. CONES SHALL BE A MINIMUM OF 28 (700) HIGH.
- 2 VERTICAL BARRICADES SHALL NOT BE USED FOR RAMP CLOSURES.
- 3 A FLAGGER SHALL BE POSITIONED AT EACH CLOSED RAMP THAT IS OPEN TO CONSTRUCTION VEHICLES, PRECEDED BY A W20-7 FLAGGER WARNING SIGN.
- 4 ALL ROUTE MARKERS AND TRAILBLAZER ASSEMBLIES WHICH DIRECT MOTORISTS TO A CLOSED ENTRANCE RAMP SHALL BE COVERED WHEN THE RAMP IS CLOSED FOR MORE THAN FOUR (4) DAYS.
- 5 THE SIGNING AND BARRICADING WHICH IS REQUIRED BY THIS DETAIL SHALL BE INCLUDED IN THE COST OF TRAFFIC CONTROL AND PROTECTION (EXPRESSWAYS).
- 6 AUTHORIZATION FROM THE DISTRICT'S BUREAU OF TRAFFIC IS REQUIRED FOR ALL RAMP CLOSURES.
- 7 THE RAMP CLOSURE ADVANCE INFORMATION SIGNS SHALL BE ERECTED IF THE CLOSURE TIME EXCEEDS TWENTY-FOUR (24) HOURS. ADDITIONAL ADVANCE WARNING SIGNS ON EXIT GUIDE SIGNING WILL BE REQUIRED FOR EXIT RAMP CLOSURES THAT EXCEED FOUR (4) DAYS IN LENGTH
- 8 ROAD CONSTRUCTION AHEAD SIGNS MAY BE OMITTED WHEN THIS DETAIL IS USED IN CONJUNCTION WITH OTHER TRAFFIC CONTROL THAT ALREADY INCLUDES A ROAD CONSTRUCTION AHEAD SIGN.
- 9 ARTERIAL ROAD CONSTRUCTION AHEAD SIGNS SHALL BE INSTALLED ON THE LEFT SIDE OF TRAFFIC IF THE MEDIAN IS MORE THAN 10 FT WIDE.

ALL DIMENSIONS ARE IN INCHES (MILLIMETERS) UNLESS OTHERWISE SHOWN.

MODEL: TC-08 (Sheet)
FILE NAME: c:\p\work\vw\illinois.gov_baraa_alsmadi\illinois.gov\152830\0104426-sh-Dis\Dis.dgn

USER NAME = Baraa.alsmadi	DESIGNED - D.W.S.	REVISED - S.P.B._12-09
	DRAWN - M.D._06-13	REVISED - M.D._06-13
	CHECKED -	REVISED - M.D._01-18
PLOT DATE = 10/15/2025	DATE - 02-83	REVISED - D.S._05-24

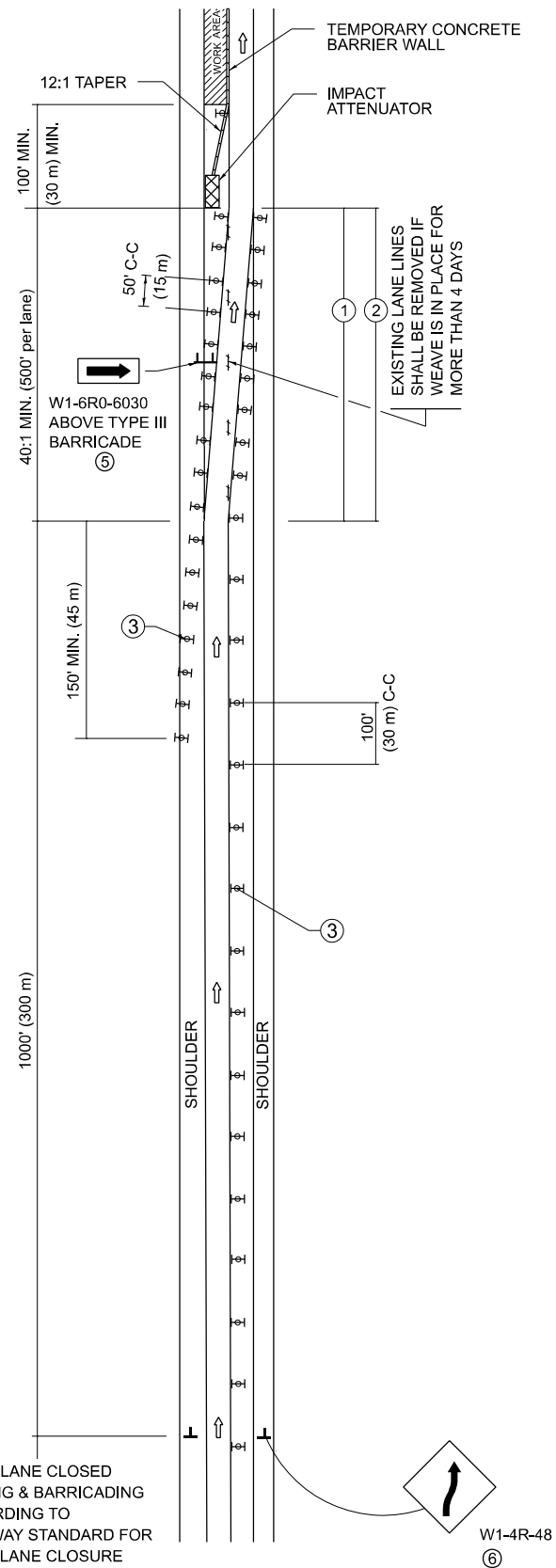
**STATE OF ILLINOIS
DEPARTMENT OF TRANSPORTATION**

**ENTRANCE AND EXIT RAMP
CLOSURE DETAILS**

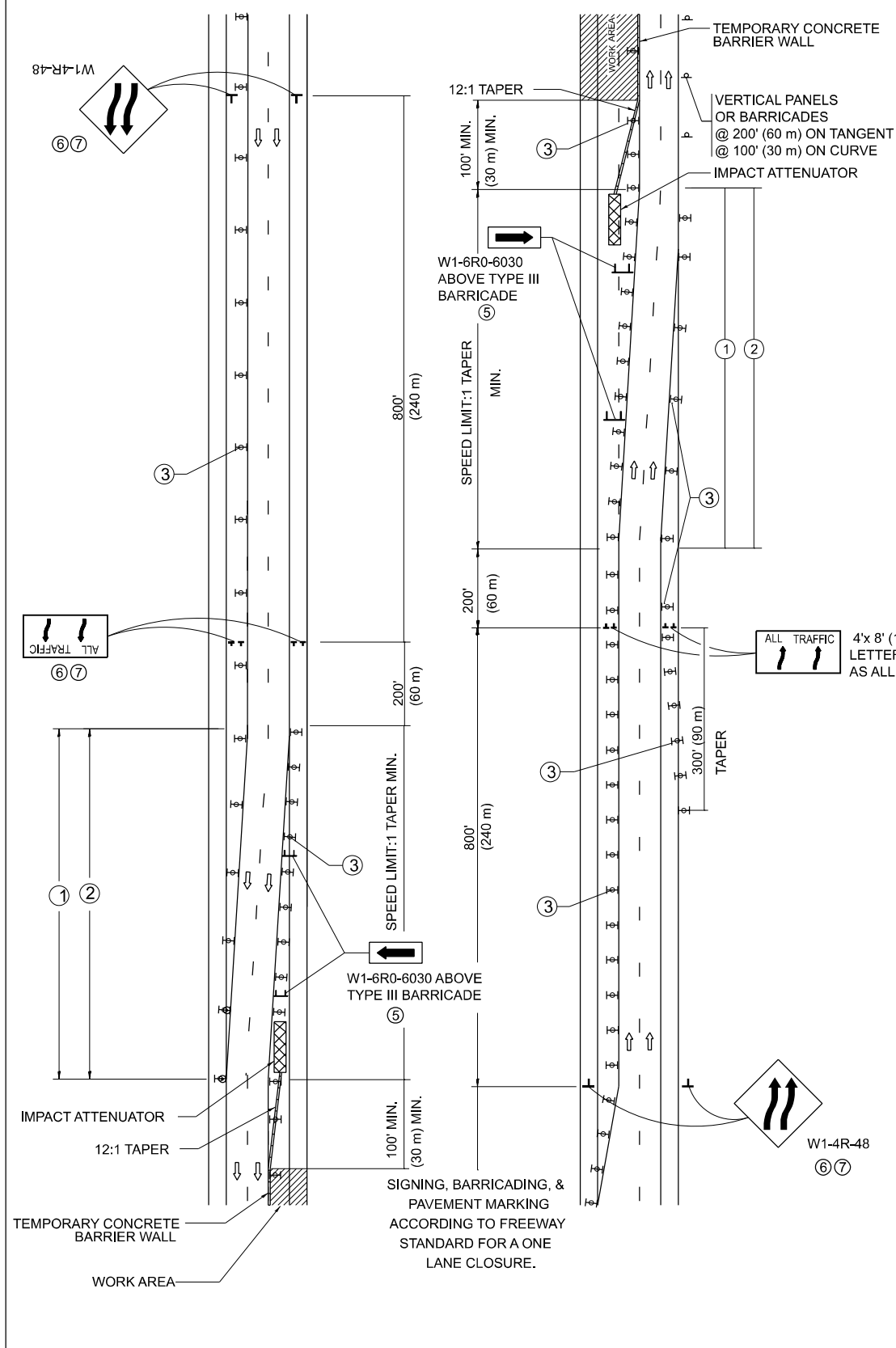
SCALE: NONE SHEET 1 OF 1 SHEETS STA. TO STA.

F.A.P. RTE.	SECTION	COUNTY	TOTAL SHEETS	SHEET NO.
*	(2626.2-4B-R(85)) BP 25	COOK	13	11
TC-08			CONTRACT NO. 80B55	
		ILLINOIS	FED. AID PROJECT	

SINGLE LANE WEAVE



MULTI-LANE WEAVE



GENERAL NOTES:

- ① EXISTING CONFLICTING PAVEMENT MARKING LINES SHALL BE REMOVED. PAVEMENT MARKING REMOVAL SHALL NOT BE REQUIRED FOR SINGLE LANE WEAVES UNDER 4 DAYS IN DURATION.
- ② CONTINUOUS REFLECTIVE TEMPORARY PAVEMENT MARKING TAPE SHALL BE PLACED THROUGHOUT THE TAPER AND FOR 300' (90 m) ALONG SIDE THE WORK AREA WHERE THE CLOSURE TIME IS GREATER THAN FOURTEEN DAYS. THE LEFT EDGE LINE SHALL BE YELLOW AND THE RIGHT EDGE LINE SHALL BE WHITE, FOR MULTI-LANE WEAVES LANE LINES SHALL BE 5 INCH, 10'-30' (3 m-9 m) SKIP DASH, WHITE.
- ③ PLASTIC DRUMS WITH STEADY BURN LIGHTS AT 50' (15 m) C-C SPACING IN TAPERS AND 100' (30 m) C-C SPACING IN TANGENTS.
- ④ ALL SIGNS SHALL BE POST MOUNTED IF THE CLOSURE TIME EXCEEDS FOUR DAYS.
- ⑤ TYPE III BARRICADES MAY BE OMITTED FOR SINGLE-LANE WEAVES UNDER 24-HOURS IN DURATION. W1-6 SIGNS WILL STILL BE REQUIRED. IF THE WIDTH OF OFFSET IS LESS THAN 6' THEN THE TYPE III BARRICADE WITH ATTACHED ARROW SIGN PANEL CAN BE ELIMINATED IN THE TAPER AREAS.
- ⑥ WHEN THE LENGTH OF THE SHIFTED SEGMENT (DISTANCE BETWEEN WEAVE POINTS) IS LESS THAN 1500', DOUBLE REVERSE CURVE SIGNS (W24-1) SHOULD BE USED INSTEAD OF THE REVERSE CURVE (W1-4) SIGNS. ARROWS ON THE 4'X8' "ALL TRAFFIC" SIGNS SHALL BE THE SAME SHAPE.
- ⑦ THE NUMBER OF ARROWS ON THESE SIGNS SHALL MATCH THE NUMBER OF LANES OPEN TO TRAFFIC.

SYMBOLS

- DIRECTION OF TRAFFIC
- WORK AREA
- SIGN ON PORTABLE OR PERMANENT SUPPORT
- TYPE II BARRICADE OR DRUM WITH MONO-DIRECTIONAL STEADY BURNING LIGHT
- TEMPORARY CONCRETE BARRIER WALL
- IMPACT ATTENUATOR
- W1-4R-48
- W24-1-48

ALL DIMENSIONS ARE IN INCHES (MILLIMETERS) UNLESS OTHERWISE SHOWN

MODEL: TC-09 (Sheet)
FILE NAME: c:\p\work\vw\illinois.gov_baraa_alsmadi\illinois.gov\1152830\104426-sh-Dist-Dist.dgn

USER NAME = Baraa.alsmadi	DESIGNED - D.W.S.	REVISED - J.A.F. 02-06
	DRAWN -	REVISED - S.P.B. 01-07
	CHECKED -	REVISED - S.P.B. 12-09
PLOT DATE = 10/15/2025	DATE - 02-87	REVISED - M.D. 06-13

STATE OF ILLINOIS
DEPARTMENT OF TRANSPORTATION

TRAFFIC CONTROL DETAILS FOR
FREEWAY SINGLE & MULTI-LANE WEAVE

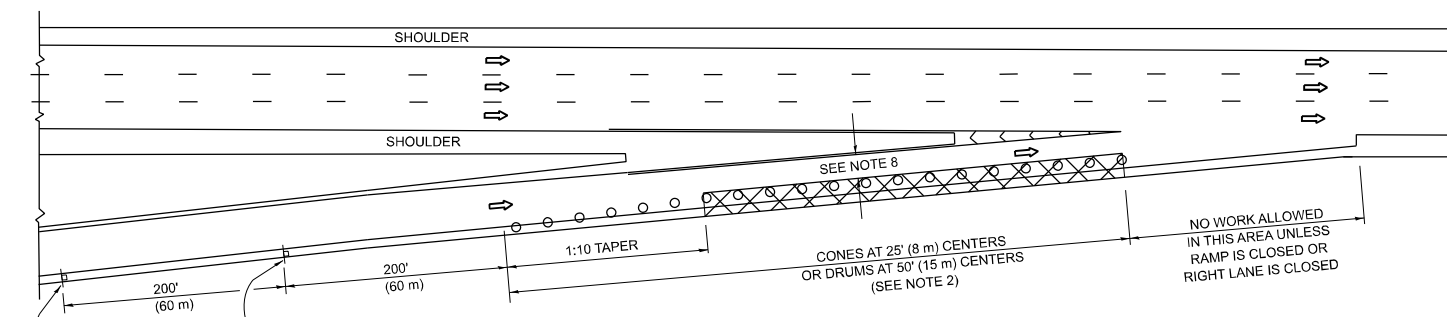
SCALE: NONE SHEET 1 OF 1 SHEETS STA. TO STA.

F.A.P. RTE.	SECTION	COUNTY	TOTAL SHEETS	SHEET NO.
*	(2626.2-4B-R(85)) BP 25	COOK	13	12
TC-09		CONTRACT NO. 80B55		

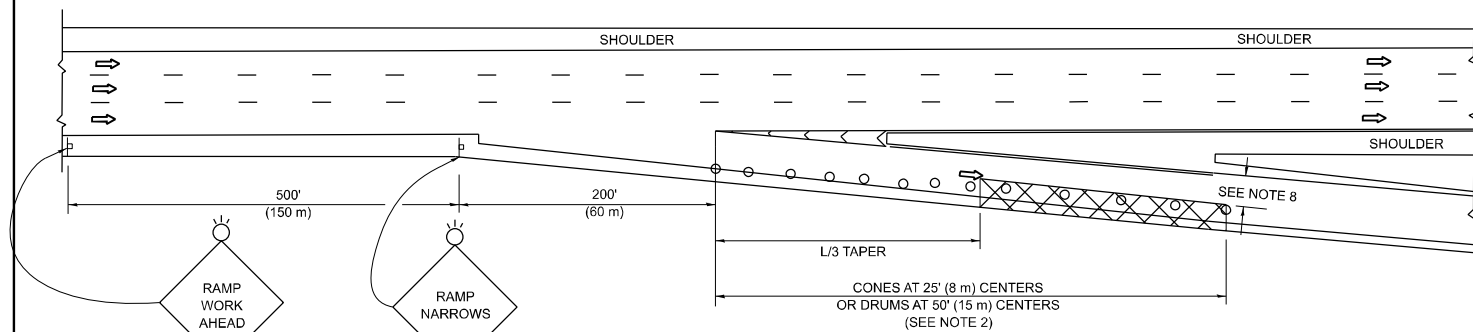
ILLINOIS FED. AID PROJECT

* FAP 347, MS 3460C

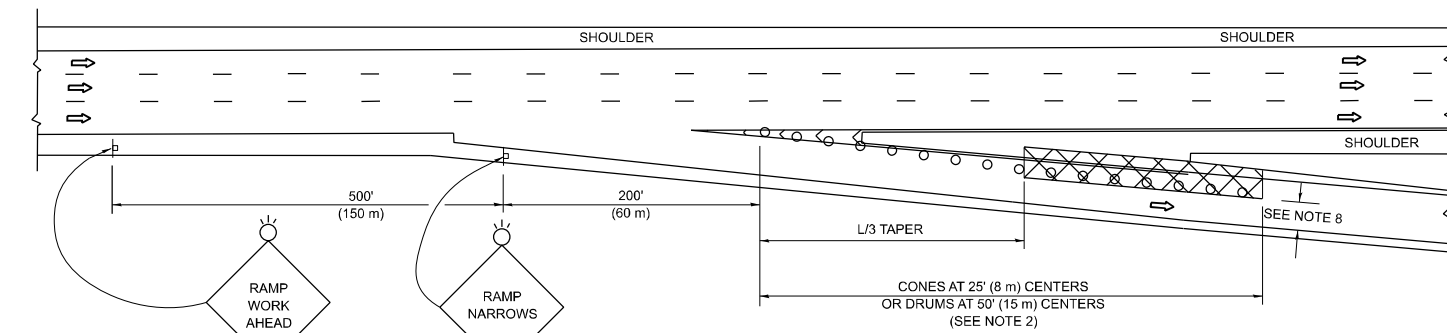
PARTIAL RAMP CLOSURE DETAILS



TYPICAL ENTRANCE RAMP



TYPICAL EXIT RAMP



TYPICAL EXIT RAMP

SYMBOLS

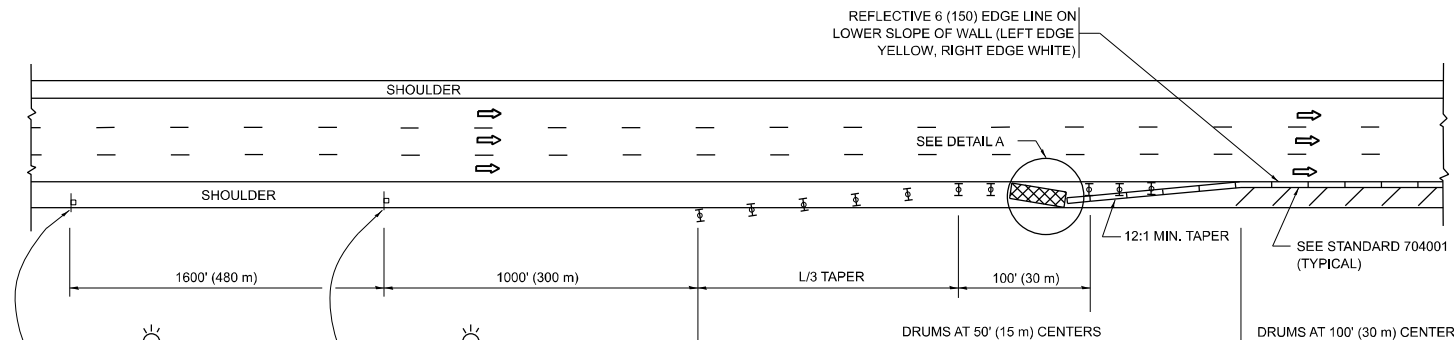
- ACTIVE WORK AREA
- SIGN ON PORTABLE OR PERMANENT SUPPORT
- FLAGGER WITH CONTROL SIGN
- TYPE II BARRICADE OR DRUM
- CONE, DRUM OR BARRICADE
- IMPACT ATTENUATOR OF TYPE AND TEST LEVEL SPECIFIED

GENERAL NOTES:

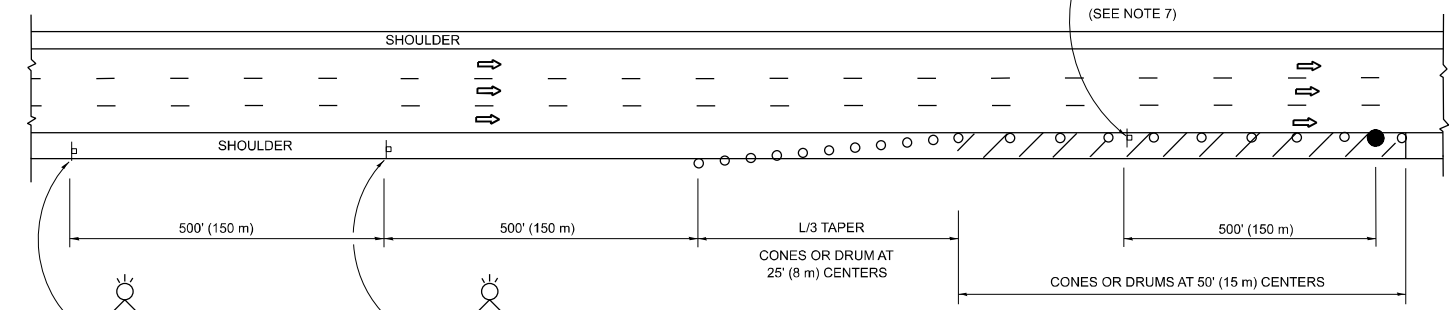
- THE "L" DISTANCE EQUALS:

SPEED LIMIT	FORMULAS
45 mph (80 km/h)	METRIC ENGLISH
OR GREATER:	$L=0.65(W)(S)$ $L=(W)(S)$
W = WIDTH OF OFFSET IN FEET (METERS)	
S = NORMAL POSTED SPEED MPH (KM/H)	
- TYPE II BARRICADES OR DRUMS ARE REQUIRED FOR ALL NIGHTTIME CLOSURES. TYPE II BARRICADES OR DRUMS WITH MONODIRECTIONAL STEADY BURN LIGHTS ARE REQUIRED FOR DELINEATING OBSTACLES, EXCAVATIONS, OR HAZARDS EXCEEDING 100 FT (30m) IN LENGTH AT NIGHT.
- ALL SIGNS SHALL BE POST MOUNTED IF THE CLOSURE TIME EXCEEDS FOUR DAYS.
- FLASHING LIGHTS SHALL BE USED DURING THE HOURS OF DARKNESS AND SHALL BE INSTALLED ABOVE THE FIRST TWO SETS OF SIGNS.

SHOULDER CLOSURE DETAILS

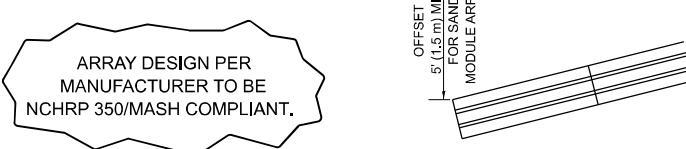


PERMANENT SHOULDER CLOSURE



TEMPORARY SHOULDER CLOSURE

- THIS DETAIL IS USED WHERE:
- VEHICLES, EQUIPMENT, WORKERS OR THEIR ACTIVITIES ENCR OACH IN AN AREA CLOSER THAN 15' (4.5 m) TO THE EDGE OF PAVEMENT FOR A PERIOD IN EXCESS OF 15 MINUTES.



**DETAIL "A"
IMPACT ATTENUATOR, TEMPORARY
(SEE NOTE 5)**

- THE IMPACT ATTENUATOR, TEMPORARY IS NOT REQUIRED WHEN THE TEMPORARY CONCRETE BARRIER WALL IS PROTECTED BY OR IS TIED INTO THE EXISTING GUARDRAIL. IF OFFSET IS LESS THAN 5 FEET USE NARROW USE TYPE DEVICE TO MEET NCHRP350/MASH.
- AUTHORIZATION FROM THE DISTRICT'S BUREAU OF TRAFFIC IS REQUIRED FOR ALL FREEWAY CLOSURES.
- THE FLAGGER AND FLAGGER SIGN ARE REQUIRED AT THE ABOVE WORK SITES WHEN:
 - FOUR OR MORE WORK VEHICLES ENTER THE TRAFFIC LANES IN A ONE HOUR PERIOD.
 - THE WORK ACTIVITY REQUIRES FREQUENT ENCR OACHMENT INTO THE LANE OPEN TO TRAFFIC.
 THE FLAGGER SHALL BE STATIONED APPROXIMATELY 100' (30 m) TO 200' (60 m) IN ADVANCE OF THE WORKERS.

- 12' MIN. WIDTH TANGENT SECTION
16' MIN. WIDTH CURVE SECTION.
- TEMPORARY SHOULDER AND NON-SYSTEM INTERCHANGE PARTIAL RAMP CLOSURES ARE ALLOWED WEEKDAYS BETWEEN 9:00 A.M. AND 3:00 P.M. AND BETWEEN 7:00 P.M. AND 5:00 A.M. OR AS APPROVED BY THE EXPRESSWAY TRAFFIC OPERATIONS ENGINEER. PERMANENT SHOULDER AND PARTIAL RAMP CLOSURES WILL ONLY BE PERMITTED IF CALLED FOR IN THE PLANS OR AS APPROVED BY THE EXPRESSWAY OPERATIONS ENGINEER.

ALL DIMENSIONS ARE IN INCHES (MILLIMETERS) UNLESS OTHERWISE SHOWN.

MODEL: TC-17 (Sheet)
FILE NAME: c:\p\work\wv\illinois.gov\baraa.alsmadi\illinois.gov\1152830\104426-sh-Dis\Dis.dgn

USER NAME = Baraa.alsmadi	DESIGNED -	REVISED - M.D. 06-13
	DRAWN - D.W.S.	REVISED - M.D. 01-18
	CHECKED -	REVISED - M.D. 10-20
PLOT DATE = 10/15/2025	DATE - 11-96	REVISED - D.S. 05-24

**STATE OF ILLINOIS
DEPARTMENT OF TRANSPORTATION**

**TRAFFIC CONTROL DETAILS FOR FREEWAY
SHOULDER CLOSURES AND PARTIAL RAMP CLOSURES**

SCALE: NONE SHEET 1 OF 1 SHEETS STA. TO STA.

F.A.P. RTE.	SECTION	COUNTY	TOTAL SHEETS	SHEET NO.
*	(2626.2-4B-R(85)) BP 25	COOK	13	13
TC-17			CONTRACT NO. 80B55	
ILLINOIS FED. AID PROJECT				