

STATE OF ILLINOIS  
DEPARTMENT OF TRANSPORTATION

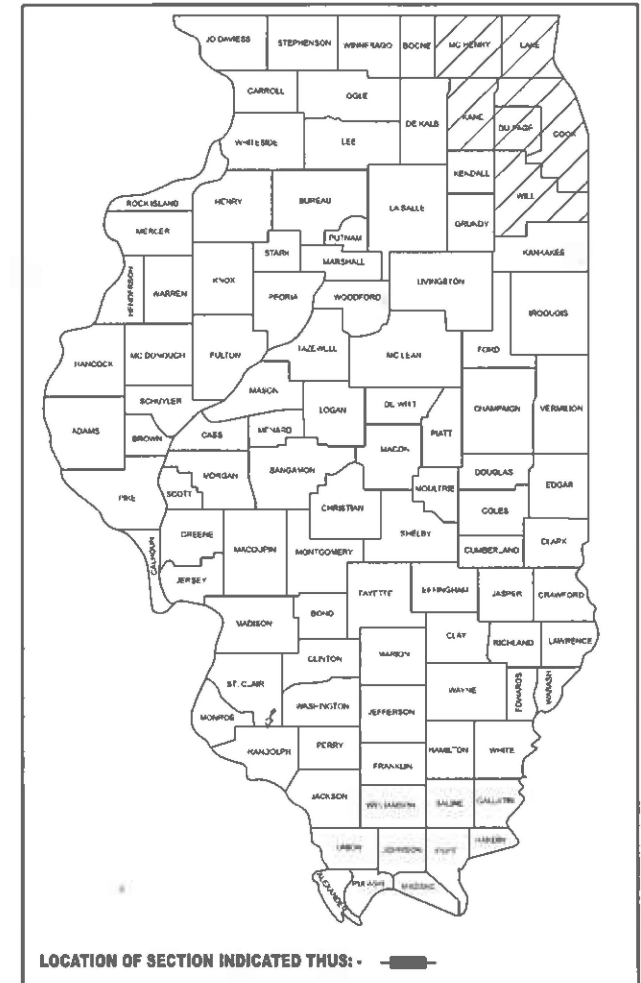
F.A. RTE.	SECTION	COUNTY	TOTAL SHEETS	SHEET NO.
VAR	2026-2149-DTR	VARIOUS	8	1
		ILLINOIS	CONTRACT NO. 80D22	

D-91-214-26

FOR INDEX OF SHEETS, SEE SHEET NO. 2

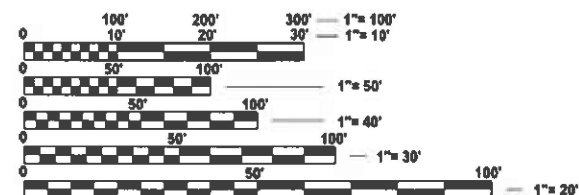
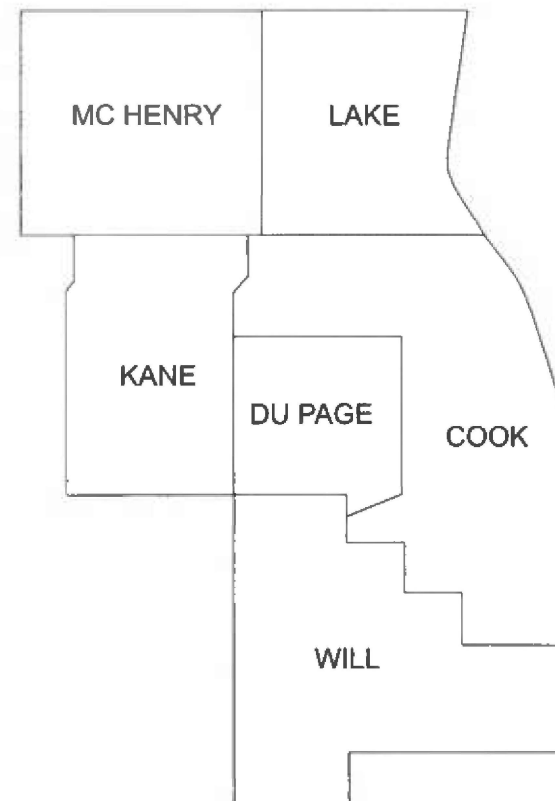
# PROPOSED HIGHWAY PLANS

ROUTE VARIOUS  
SECTION 2026-2149-DTR  
PROJECT N/A  
VARIOUS LOCATIONS (DEAD TREE REMOVAL)  
VARIOUS COUNTY



IMPROVEMENTS ARE AT VARIOUS  
LOCATIONS WITHIN DISTRICT ONE

C-91-241-26



FULL SIZE PLANS HAVE BEEN PREPARED USING STANDARD  
ENGINEERING SCALES. REDUCED SIZED PLANS WILL NOT  
CONFORM TO STANDARD SCALES. IN MAKING MEASUREMENTS  
ON REDUCED PLANS, THE ABOVE SCALES MAY BE USED.

J.U.L.I.E.  
JOINT UTILITY LOCATION INFORMATION FOR EXCAVATION  
1-800-892-0123  
OR 811

PROJECT ENGINEER: MELISSA DEL ROSARIO (847) 705-4391  
PROJECT MANAGER: GIOVANNA ZAFFINA

CONTRACT NO. 80D22

STATE OF ILLINOIS  
DEPARTMENT OF TRANSPORTATION

SUBMITTED Jan 15<sup>th</sup> 2026  
[Signature] REGIONAL ENGINEER

March 20 2026  
[Signature] ENGINEER OF DESIGN AND ENVIRONMENT

March 20 2026  
[Signature] DIRECTOR OF HIGHWAYS PROJECT IMPLEMENTATION

PRINTED BY THE AUTHORITY  
OF THE STATE OF ILLINOIS

## INDEX OF SHEETS

## STATE STANDARDS

## GENERAL NOTES

**SHEET NO.**

**DESCRIPTION**

**STANDARD NO.**

**DESCRIPTION**

1	COVER SHEET	701001-02	OFF-ROAD OPERATIONS, 2L, 2W, MORE THAN 15' AWAY
2	INDEX OF SHEETS, STATE STANDARDS, AND GENERAL NOTES	701006-05	OFF-ROAD OPERATION, 2L, 2W, 15' TO 24" FROM PAVEMENT EDGE
3	SUMMARY OF QUANTITIES	701106-02	OFF-ROAD OPERATIONS, MORE THAN 15' AWAY
4	DEAD TREE REMOVAL SAMPLE WORK ORDER	701201-05	LANE CLOSURE, 2L, 2W, DAY ONLY, FOR SPEEDS ≥ 45 MPH
5	DEAD TREE REMOVAL STUMP DETAILS	701301-04	LANE CLOSURE, 2L, 2W, SHORT TIME OPERATIONS
6	PRUNING FOR SAFETY AND EQUIPMENT CLEARANCE DETAIL	701311-03	LANE CLOSURE, 2L, 2W MOWING OPERATIONS - DAY ONLY
7	TRAFFIC CONTROL AND PROTECTION FOR SIDE ROADS, INTERSECTIONS, & DRIVEWAYS (TC-10)	701421-08	LANE CLOSURE, MULTILANE, DAY OPERATION ONLY, FOR SPEEDS ≥ 45 MPH TO 55 MPH
8	TRAFFIC CONTROL DETAIL FOR FREEWAY SHOULDER CLOSURES AND PARTIAL RAMP CLOSURE (TC-17)	701422-10	LANE CLOSURE, MULTILANE, FOR SPEEDS ≥ 45 MPH TO 55 MPH
		701427-05	LANE CLOSURE, MULTILANE, INTERMITTENT OR MOVING OPERATION, FOR SPEEDS ≤ 40 MPH
		701501-06	URBAN LANE CLOSURE, 2L, 2W, UNDIVIDED
		701502-09	URBAN LANE CLOSURE, 2L, 2W, BI-DIRECTIONAL LEFT TURN LANE
		701601-09	URBAN LANE CLOSURE, MULTILANE, 1W OR 2W WITH NON-TRAVERSABLE MEDIAN
		701606-10	URBAN SINGLE LANE CLOSURE, MULTILANE, 2W WITH MOUNTABLE MEDIAN
		701611-01	URBAN HALF CLOSURE, MULTILANE, 2W WITH MOUNTABLE MEDIAN
		701701-10	URBAN LANE CLOSURE, MULTILANE INTERSECTION
		701801-06	SIDEWALK, CORNER OR CROSSWALK CLOSURE
		701901-11	TRAFFIC CONTROL DEVICES

BEFORE STARTING ANY EXCAVATION, THE CONTRACTOR SHALL CALL "JULIE AT (800) 892-0123 OR 811 FOR FIELD LOCATIONS OF BURIED ELECTRIC, TELEPHONE AND GAS FACILITIES, (48 HOURS NOTIFICATION IS REQUIRED).

THE CONTRACTOR WILL NOT BE ALLOWED TO SET UP A YARD OR FIELD OFFICE ON STATE PROPERTY WITHOUT WRITTEN PERMISSION FROM THE DEPARTMENT.

IT SHALL BE THE CONTRACTOR'S RESPONSIBILITY TO VERIFY ALL CONDITIONS EXISTING IN THE FIELD PRIOR TO STARTING WORK ORDERS.

THE CONTRACTOR SHALL CONTACT KALPANA KANNAN-HOSADURGA, THE DISTRICT ONE TRAFFIC CONTROL SUPERVISOR AT KALPANA.KANNAN-HOSADURGA@ILLINOIS.GOV A MINIMUM OF 72 HOURS IN ADVANCE OF BEGINNING WORK.

THE CONTRACTOR SHALL REQUEST AND GAIN APPROVAL FROM THE ILLINOIS DEPARTMENT OF TRANSPORTATION'S EXPRESSWAY TRAFFIC OPERATIONS ENGINEER AT WWW.IDOTLCS.COM TWENTY-FOUR (24) HOURS IN ADVANCE OF ALL DAILY LANE, RAMP, AND SHOULDER CLOSURES AND (7) DAYS IN ADVANCE OF ALL PERMANENT AND WEEKEND CLOSURES ON FREEWAYS AND/OR EXPRESSWAYS IN DISTRICT ONE. THIS ADVANCE NOTIFICATION IS CALCULATED BASED ON WORK WEEK OF MONDAY THROUGH FRIDAY AND SHALL NOT INCLUDE WEEKENDS OR HOLIDAYS.

THE CONTRACTOR SHALL BE REQUIRED TO PROVIDE ACCESS TO ABUTTING PROPERTY AT ALL TIMES DURING THE CONSTRUCTION OF THIS PROJECT.

THE CONTRACTOR SHALL USE CARE IN TREE REMOVAL OPERATIONS NEAR ANY AND ALL EXISTING ITEMS THAT WILL NOT BE REMOVED. ANY DAMAGE DONE TO EXISTING ITEMS BY THE CONTRACTOR SHALL BE REPAIRED AT THE CONTRACTOR'S OWN EXPENSE TO THE SATISFACTION OF THE ENGINEER.

THE CONTRACTOR SHALL MAINTAIN PEDESTRIAN ACCESS AT ALL TIMES DURING CONSTRUCTION.

THE CONSTRUCTION LIMITS WILL BE STAKED AND APPROVED BY THE ENGINEER PRIOR TO COMMENCING CONSTRUCTION. THE CONSTRUCTION LIMITS MAY BE ADJUSTED BY THE ENGINEER TO PRESERVE TREES AND NO ADDITIONAL COMPENSATION WILL BE PAID TO THE CONTRACTOR FOR CHANGES IN CONSTRUCTION LIMITS.

DURING CONSTRUCTION OPERATIONS, WHEN ANY LOOSE MATERIAL IS DEPOSITED IN THE FLOW LINE OF DITCHES, GUTTERS, OR DRAINAGE STRUCTURES SO THAT THE NATURAL FLOW OF WATER IS OBSTRUCTED, THE MATERIAL SHALL BE REMOVED AT THE CLOSE OF EACH WORKING DAY. THIS WORK IS CONSIDERED AS PART OF CLEAN-UP.

DO NOT SCALE PLANS FOR CONSTRUCTION DIMENSIONS.

TO AVOID IMPACTS TO THE STATE AND FEDERALLY-THREATENED NORTHERN LONG-EARED BAT (MYOTIS SEPTENTRIONALIS) AND ITS HABITAT, CLEARING OF POTENTIAL HABITAT TREES SHALL NOT BE PERMITTED FROM APRIL 1ST THROUGH OCTOBER 31ST. THE ENGINEER SHALL HAVE THE FINAL DETERMINATION OF TREE REMOVAL.

THE CONTRACTOR SHALL ADHERE TO ARTICLE 107.23 OF THE CURRENT IDOT STANDARD SPECIFICATIONS BOOK.

WHEN HERBICIDE WORK IS SPECIFIED AND AUTHORIZED, THE CONTRACTOR SHALL HAVE A LICENSED APPLICATOR ON THE WORK SITE TO PERFORM SAID WORK UNDER THE DIRECT SUPERVISION OF THE RESIDENT ENGINEER.

THE CONTRACTOR SHALL CONTACT THE IDOT EXPRESSWAY TRAFFIC CONTROL SUPERVISOR DISTRICT ONE CARLOS AT CARLOS.MUNOZ@ILLINOIS.GOV A MINIMUM OF 72 HOURS IN ADVANCE OF BEGINNING OF WORK.

MODEL: GenNotesShr01 [Sheet]  
FILE NAME: c:\p\work\w10101\yuyang.deng@illinois.gov\1191405D\121426-shr-gennote.dgn

	USER NAME = Yuyang.Deng	DESIGNED -	REVISED -	<b>STATE OF ILLINOIS DEPARTMENT OF TRANSPORTATION</b>	<b>INDEX OF SHEETS, STATE STANDARDS, AND GENERAL NOTES</b>	F.A. RTE.	SECTION	COUNTY	TOTAL SHEETS	SHEET NO.
		DRAWN -	REVISED -				2026-2149-DTR	VARIOUS	8	2
	PLOT SCALE = 0.16666633' / in.	CHECKED -	REVISED -							
	PLOT DATE = 2/4/2026	DATE -	REVISED -		SCALE:	SHEET 2	OF 8	SHEETS	STA.	TO STA.
										ILLINOIS FED. AID PROJECT

MODEL: SOQ01 [Sheet]  
 FILE NAME: c:\pwr\_work\kwid\yuyang.deng@illinois.gov\1191405D121426-shh-SOQ.dgn

SUMMARY OF QUANTITIES				TYPE CODE						
				URBAN	URBAN	URBAN	URBAN	URBAN	URBAN	
				ROADWAY						
Code No.	Item	Unit	Total Quantity	0031						
20100110	TREE REMOVAL (6 TO 15 UNITS DIAMETER)	UNIT	4400	4400						
20100210	TREE REMOVAL (OVER 15 UNITS DIAMETER)	UNIT	4000	4000						
20101300	TREE PRUNING (1 TO 10 INCH DIAMETER)	EACH	30	30						
20101350	TREE PRUNING (OVER 10 INCH DIAMETER)	EACH	75	75						
67100100	MOBILIZATION	L SUM	1	1						
X2010100	TREE LIMB REMOVAL (4 TO 10 INCHES DIAMETER)	EACH	30	30						
X2010101	TREE LIMB REMOVAL (4 TO 10 INCHES DIAMETER), EXPEDITED	EACH	10	10						
X2010106	TREE REMOVAL (UNDER 6 UNITS DIAMETER)	UNIT	630	630						
X2010110	TREE REMOVAL (6 TO 15 UNITS DIAMETER) EXPEDITED	UNIT	300	300						
X2010200	TREE LIMB REMOVAL (OVER 10 INCHES DIAMETER)	EACH	45	45						
X2010201	TREE LIMB REMOVAL (OVER 10 INCHES DIAMETER), EXPEDITED	EACH	10	10						
X2010210	TREE REMOVAL (OVER 15 UNITS DIAMETER), EXPEDITED	UNIT	300	300						
X2010305	TREE PRUNING (SPECIAL)	UNIT	300	300						
X2010310	TREE REMOVAL (SPECIAL)	UNIT	12	12						
X2010350	TREE REMOVAL, ACRES (SPECIAL)	ACRE	7	7						
X2010400	STUMP REMOVAL ONLY	UNIT	110	110						
X2010514	SELECTIVE CLEARING	ACRE	0.75	0.75						
X2010516	SELECTIVE CLEARING	UNIT	275	275						
X2011300	TREE PRUNING (1 TO 10 INCH DIAMETER), EXPEDITED	EACH	5	5						
X2011350	TREE PRUNING (OVER 10 INCH DIAMETER), EXPEDITED	EACH	10	10						
X2100002	PRUNING FOR SAFETY AND EQUIPMENT CLEARANCE	UNIT	430	430						
Ø Z0076604	TRAINEES - TRAINING PROGRAM GRADUATE	hour	1500	1500						

\* DENOTES SPECIALTY ITEM

Ø 0042

USER NAME = Yuyang.Deng	DESIGNED -	REVISED -
	DRAWN -	REVISED -
PLOT SCALE = 0.16666633' / in.	CHECKED -	REVISED -
PLOT DATE = 1/13/2026	DATE -	REVISED -

**STATE OF ILLINOIS  
 DEPARTMENT OF TRANSPORTATION**

**SUMMARY OF QUANTITIES**

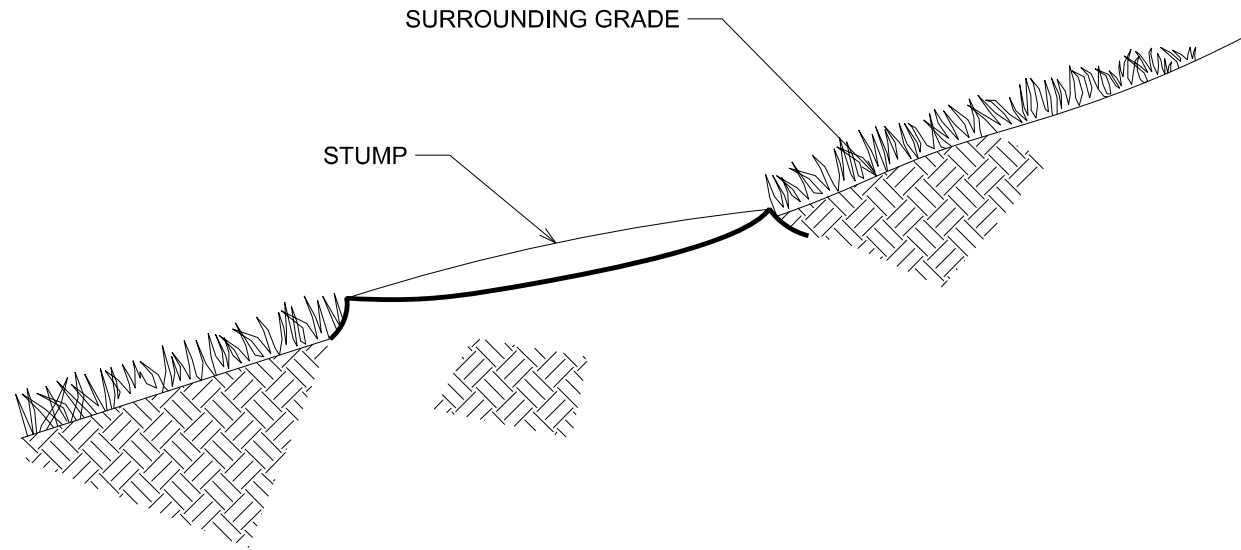
SCALE: SHEET 3 OF 8 SHEETS STA. TO STA.

F.A. RTE.	SECTION	COUNTY	TOTAL SHEETS	SHEET NO.
VAR	2026-2149-DTR	VARIOUS	8	3
ILLINOIS			CONTRACT NO. 80D22	
FED. AID PROJECT				

<b>Illinois Department of Transportation</b>		<b>CONTRACT 80D22</b>		WORK ORDER NUMBER:					
Field Work By:	Standard - 30 Day	PAGE: ____ of ____							
Prepared By:	Completion Date								
Cook	DuPage	Kane	Team Section						
Lake	McHenry	Will							
Marked Route:	Municipality:	Side of Road:							
Location:									
TREE REMOVAL BY AREA	LOCATION	MEASUREMENTS			PRUNING FOR SAFETY & EQUIP. CLEAR. (X2100002) UNIT - (100 LF)	SELECTIVE CLEARING (X2010516) UNIT - (1000 SF)	SELECTIVE CLEARING (X2010514) ACRE	TREE REMOVAL SPECIAL (X2010310) UNIT - (1000 SF)	TREE REMOVAL, ACRES (SPECIAL) (X2010350) ACRE
		WIDTH	LENGTH	TOTAL AREA					
	SHEET TOTAL								
GRAND TOTAL									
Special Instructions:									
Reason for Removal:									
AUTHORIZATION OF WORK			CERTIFICATION OF COMPLETED WORK						
IDOT Resident Engineer/Technician Signature			Contractor Signature						
Date Work Order Issued	Contractor Signature		Date Work Order Completed						
OFFICE USE ONLY			INSPECTION AND ACCEPTANCE OF COMPLETED WORK						
	INITIAL(S)	DATE	Inspector Signature						
Measured in place by:									
Calculated by:									
Checked by:			Date Work Ordered Inspected and Accepted						
This is to certify that the work has been completed.									

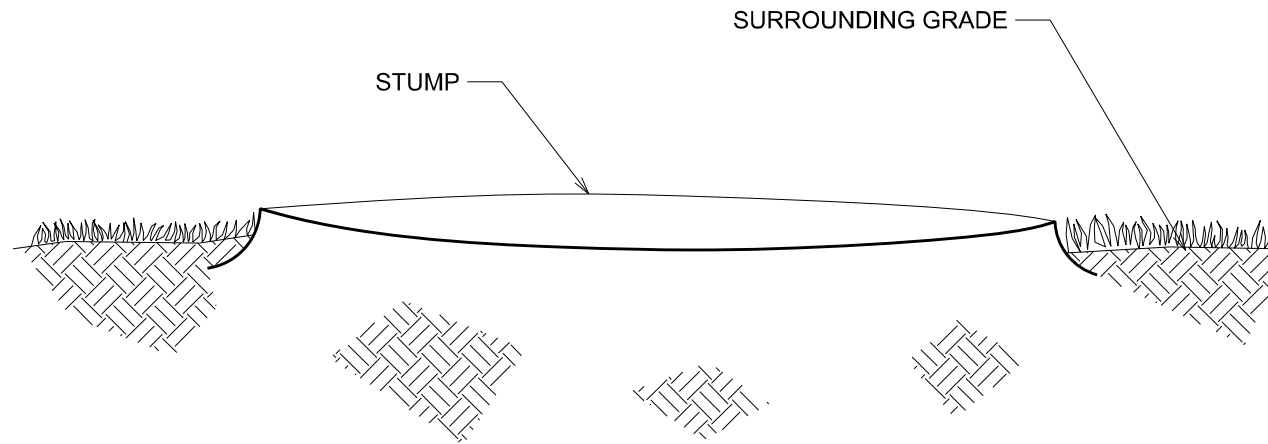
<b>Illinois Department of Transportation</b>		<b>CONTRACT 80D22</b>		WORK ORDER NUMBER:					
Field Work By:	Standard - 30 Day	PAGE: ____ of ____							
Prepared By:	Completion Date								
Cook	DuPage	Kane	Team Section						
Lake	McHenry	Will							
Marked Route:	Municipality:	Side of Road:							
Location:									
TREE REMOVAL BY UNIT	TREE #	LIMB REMOVAL		TREE REMOVAL			TREE PRUNING		
		4" - 10" (X2010100) EACH	>10" (X2010200) EACH	Under 6" Diameter (X2010106) UNIT (DIA)	6"-15" (20100110) UNIT (DIA)	> 15" (20100210) UNIT (DIA)	STUMP REMOVAL ONLY (X2010400) UNIT (DIA)	1" - 10" (20101300) UNIT (DIA)	> 10" (20101350) UNIT (DIA)
	SHEET TOTAL								
GRAND TOTAL									
Special Instructions:									
Reason for Removal:									
AUTHORIZATION OF WORK			CERTIFICATION OF COMPLETED WORK						
IDOT Resident Engineer/Technician Signature			Contractor Signature						
Date Work Order Issued	Contractor Signature		Date Work Order Completed						
OFFICE USE ONLY			INSPECTION AND ACCEPTANCE OF COMPLETED WORK						
	INITIAL(S)	DATE	Inspector Signature						
Measured in place by:									
Calculated by:									
Checked by:			Date Work Ordered Inspected and Accepted						
This is to certify that the work has been completed.									

MODEL: DTR Work Order (Sheet)  
FILE NAME: c:\p\work\pob\yuyang.dwg@illinois.gpo\1191405D\121426-shr-schedule.dgn



**STUMP CUT FLUSH AT A HORIZONTAL PLANE**

NOTE: STUMPS SHALL BE CUT LESS THAN 2" OF THE SURROUNDING GRADE



**STUMP CUT FLUSH ON A SLOPE**

NOTE: STUMPS SHALL BE CUT LESS THAN 2" OF THE SURROUNDING GRADE

MODEL: DTR Stump Detail-1 (Sheet)  
FILE NAME: c:\p\work\wtd\yuyang.deng@illinois.gov\1191405D\121425-shh-details.dgn

USER NAME = Yuyang.Deng	DESIGNED -	REVISED -
	DRAWN -	REVISED -
	CHECKED -	REVISED -
PLOT DATE = 1/15/2026	DATE -	REVISED -

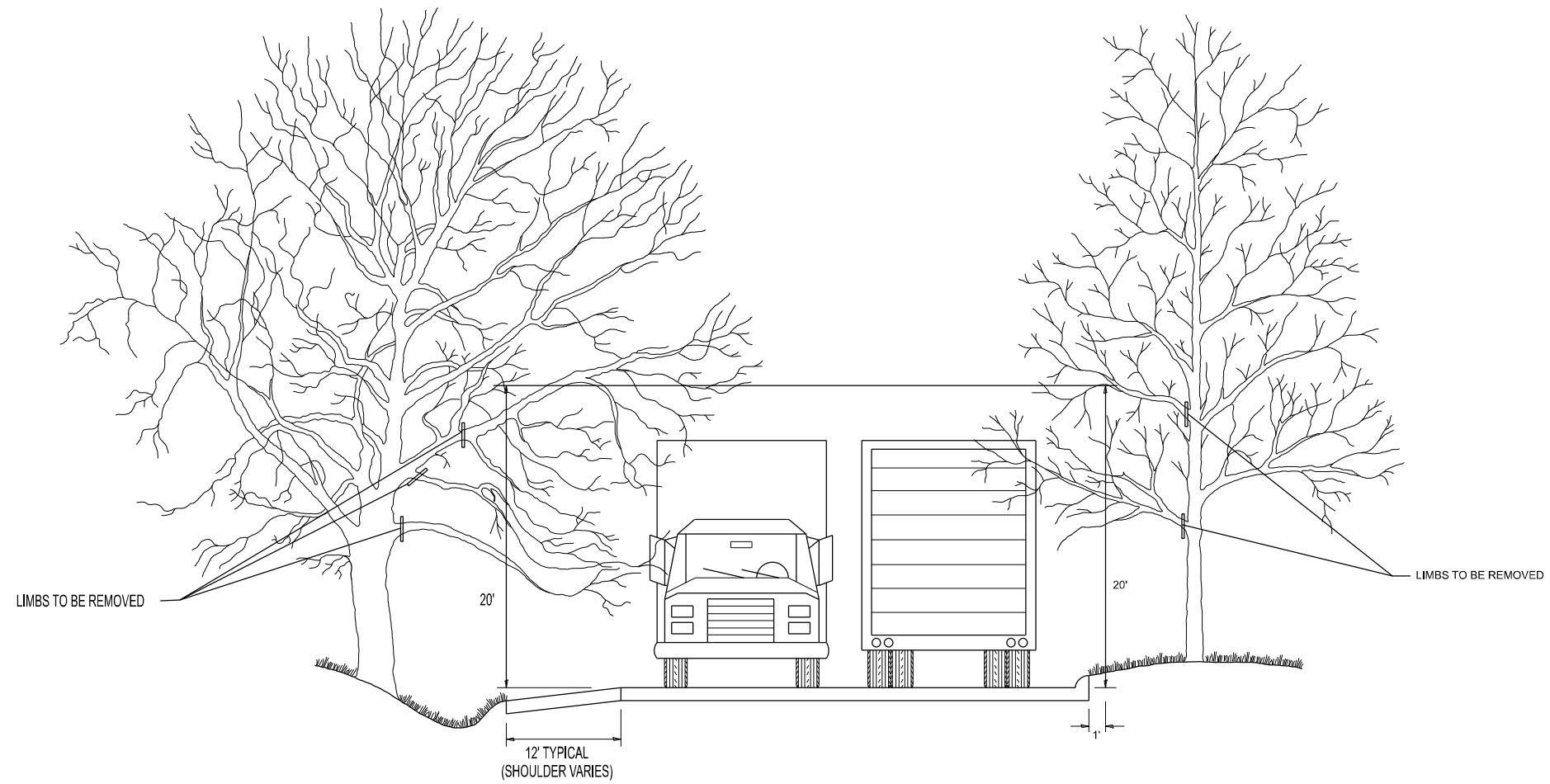
**STATE OF ILLINOIS  
DEPARTMENT OF TRANSPORTATION**

**DEAD TREE REMOVAL STUMP DETAILS**

SCALE: SHEET 5 OF 8 SHEETS STA. TO STA.

F.A. RTE.	SECTION	COUNTY	TOTAL SHEETS	SHEET NO.
VAR	2026-2149-DTR	VARIOUS	8	5
ILLINOIS FED. AID PROJECT			CONTRACT NO. 80D22	

MODEL: Pruning for safety and equipment clearing detail (Sheet)  
 FILE NAME: c:\p\work\wtdbyyuyang.deng@illinois.gov\1191405D\121425-shh-DhsStds.dgn



USER NAME = Yuyang.Deng	DESIGNED -	REVISED - R. BORO 10-31-06
	DRAWN -	REVISED -
	CHECKED -	REVISED -
PLOT DATE = 1/13/2026	DATE -	REVISED -

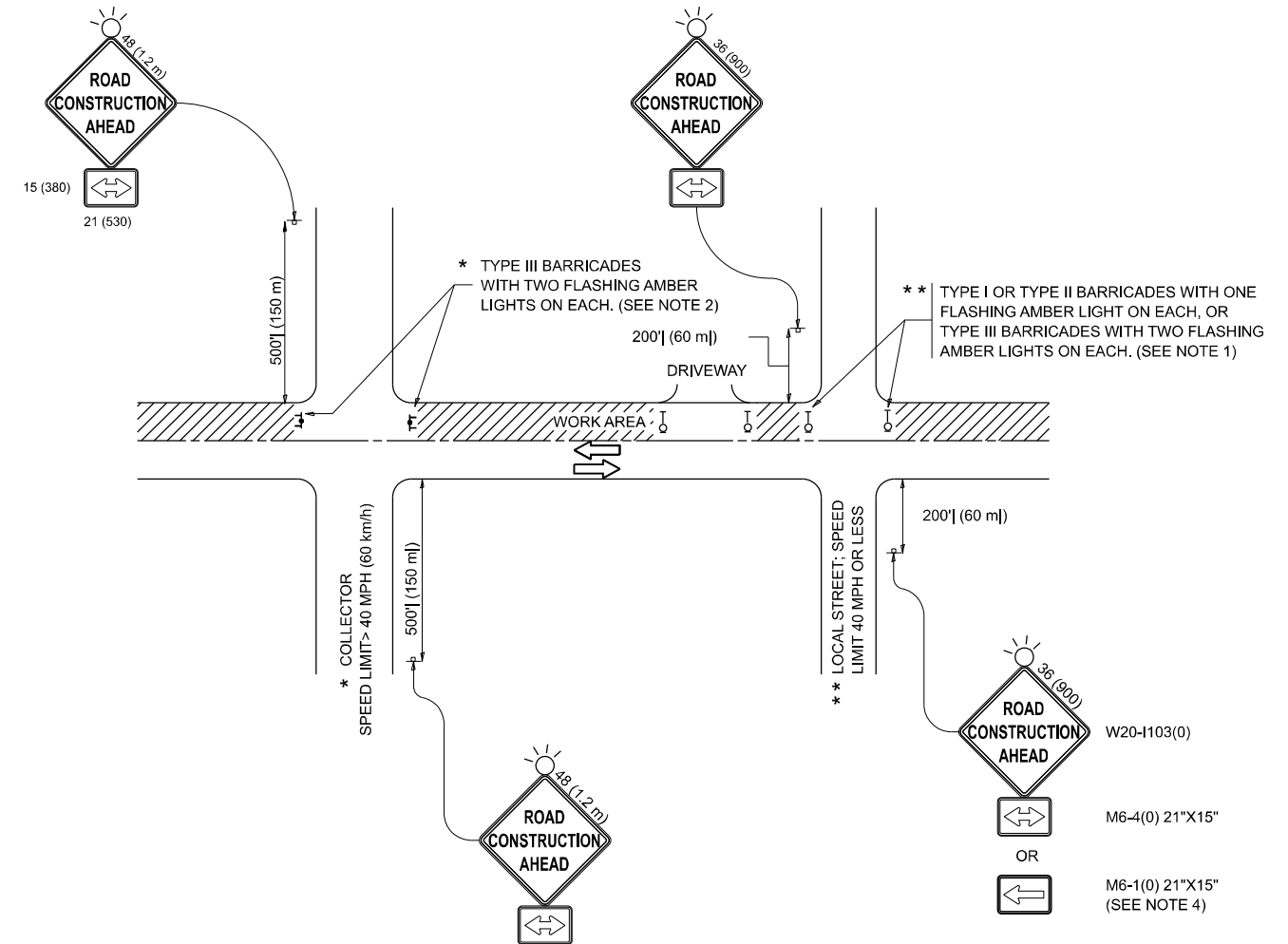
**STATE OF ILLINOIS  
 DEPARTMENT OF TRANSPORTATION**

**PRUNING FOR SAFETY AND  
 EQUIPMENT CLEARANCE**

SCALE: NONE SHEET 1 OF 1 SHEETS STA. TO STA.

F.A. RTE.	SECTION	COUNTY	TOTAL SHEETS	SHEET NO.
VAR	2026-2149-DTR	VARIOUS	8	6
<b>BM-20</b>			CONTRACT NO. 80D22	
ILLINOIS FED. AID PROJECT				

MODEL: TC-10 (Sheet)  
 FILE NAME: c:\p\work\yuyang.deng@illinois.gov\1191405D\121426-shh-DiaStds.dgn



**NOTES:**

- SIDE ROAD WITH A SPEED LIMIT OF 40 MPH (60 km/h) OR LESS AS SHOWN ON THE DRAWING AND AS DIRECTED BY THE ENGINEER:
  - ONE "ROAD CONSTRUCTION AHEAD" SIGN 36 x 36 (900x900) WITH A FLASHER MOUNTED ON IT APPROXIMATELY 200' (60 m) IN ADVANCE OF THE MAIN ROUTE.
  - THE CLOSED PORTION OF THE MAIN ROUTE SHALL BE PROTECTED BY BLOCKING WITH TYPE I, TYPE II OR TYPE III BARRICADES, 1/3 OF THE CROSS SECTION OF THE CLOSED PORTION.
- SIDE ROAD WITH A SPEED LIMIT GREATER THAN 40 MPH (60 km/h) AS SHOWN ON THE DRAWING AND AS DIRECTED BY THE ENGINEER:
  - ONE "ROAD CONSTRUCTION AHEAD" SIGN 48 x 48 (1.2 m x 1.2 m) WITH A FLASHER MOUNTED ON IT APPROXIMATELY 500' (150 m) IN ADVANCE OF THE MAIN ROUTE.
  - THE CLOSED PORTION OF THE MAIN ROUTE SHALL BE PROTECTED BY BLOCKING WITH TYPE III BARRICADES, 1/2 OF THE CROSS SECTION OF THE CLOSED PORTION.
- CONES MAY BE SUBSTITUTED FOR BARRICADES OR DRUMS AT HALF THE SPACING DURING DAY OPERATIONS. CONES SHALL BE A MINIMUM OF 28 (710) IN HEIGHT.
- WHEN THE SIDE ROAD LIES BETWEEN THE BEGINNING OF THE MAINLINE SIGNING AND THE WORK ZONE, A SINGLE HEADED ARROW (M6-1) SHALL BE USED IN LIEU OF THE DOUBLE HEADED ARROW (M6-4).
- WHEN WORK IS BEING PERFORMED ON A SIDE ROAD OR DRIVEWAY, FOLLOW THE APPLICABLE STANDARD(S). THE DIRECTIONAL ARROW (M6-1 OR M6-4) SHALL BE COVERED OR REMOVED WHEN NO LONGER CONSISTENT WITH THE TRAFFIC CONTROL SET-UP.
- ADVANCE WARNING SIGNS ARE TO BE OMITTED ON DRIVEWAYS UNLESS OTHERWISE SPECIFIED IN THE PLANS OR BY THE ENGINEER.
- THE TRAFFIC CONTROL AND PROTECTION FOR SIDE ROADS, INTERSECTIONS, AND DRIVEWAYS SHALL BE INCLUDED IN THE COST OF SPECIFIED TRAFFIC CONTROL STANDARDS OR ITEMS.

All dimensions are in inches (millimeters) unless otherwise shown.

USER NAME = Yuyang.Deng	DESIGNED - L.H.A.	REVISED - T. RAMMACHER 01-06-00
	DRAWN -	REVISED - A. SCHUETZE 07-01-13
	CHECKED -	REVISED - A. SCHUETZE 09-15-06
PLOT DATE = 1/13/2026	DATE - 06-89	REVISED - D. SENDERAK 05-03-24

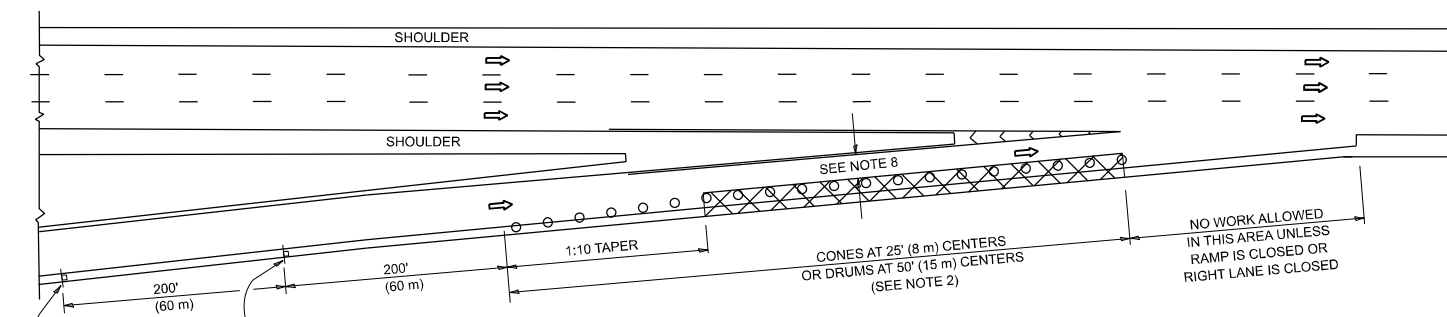
**STATE OF ILLINOIS  
 DEPARTMENT OF TRANSPORTATION**

**TRAFFIC CONTROL AND PROTECTION FOR  
 SIDE ROADS, INTERSECTIONS, AND DRIVEWAYS**

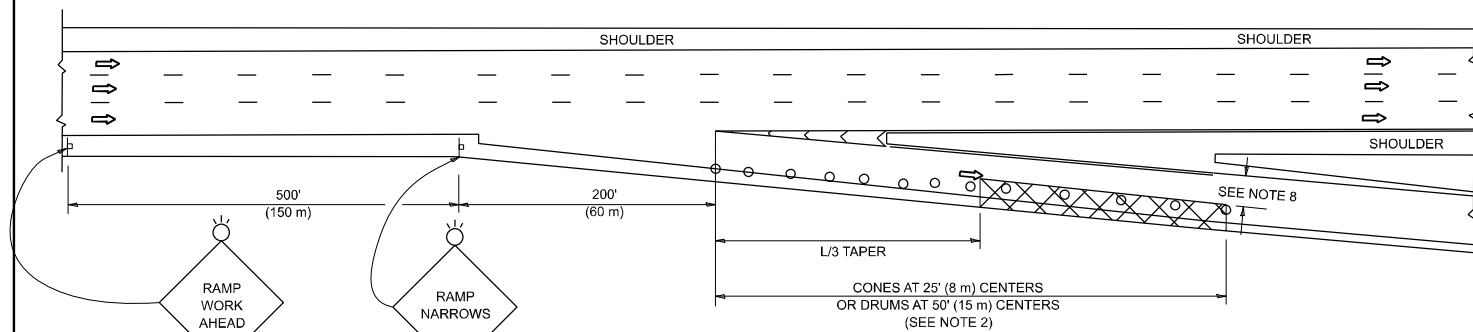
SCALE: SHEET OF SHEETS STA. TO STA.

F.A. RTE.	SECTION	COUNTY	TOTAL SHEETS	SHEET NO.
VAR	2026-2149-DTR	VARIOUS	8	7
<b>TC-10</b>			CONTRACT NO. 80D22	
ILLINOIS FED. AID PROJECT				

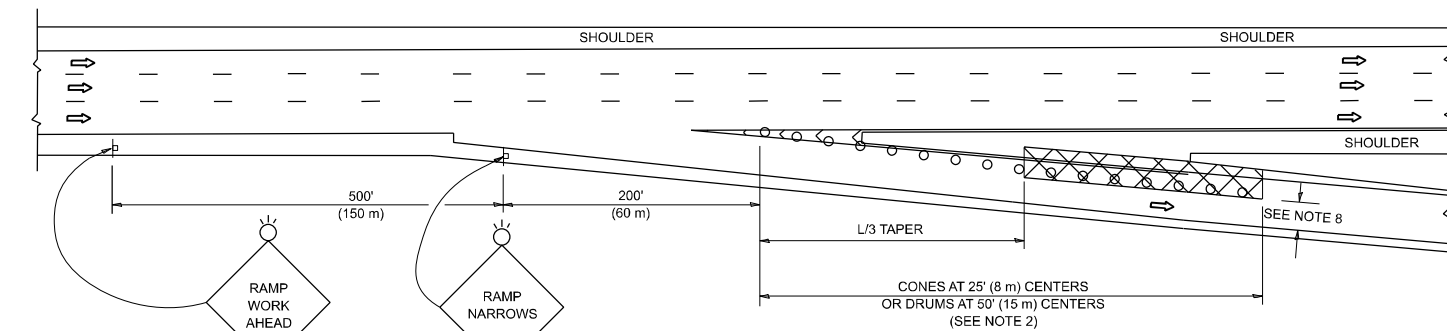
**PARTIAL RAMP CLOSURE DETAILS**



**TYPICAL ENTRANCE RAMP**



**TYPICAL EXIT RAMP**



**TYPICAL EXIT RAMP**

**SYMBOLS**

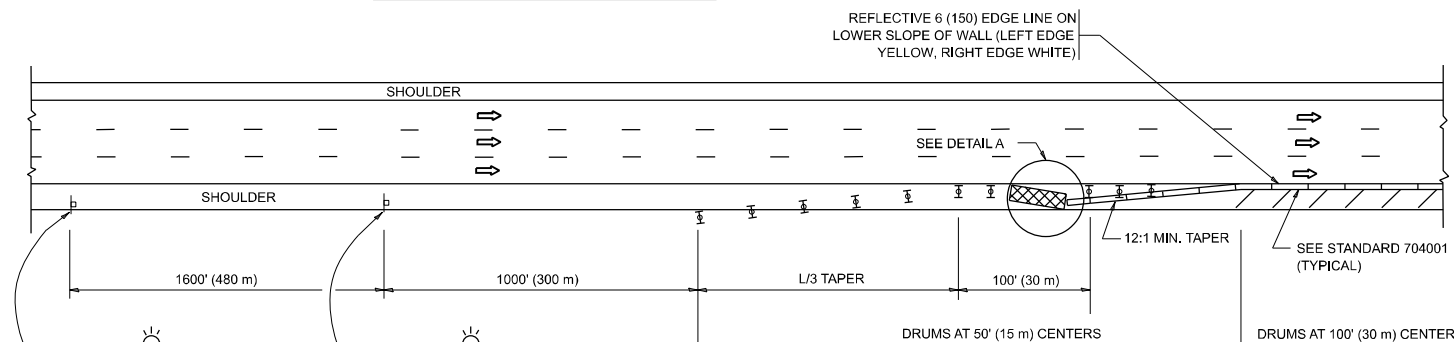
- ACTIVE WORK AREA
- SIGN ON PORTABLE OR PERMANENT SUPPORT
- FLAGGER WITH CONTROL SIGN
- TYPE II BARRICADE OR DRUM
- CONE, DRUM OR BARRICADE
- IMPACT ATTENUATOR OF TYPE AND TEST LEVEL SPECIFIED

**GENERAL NOTES:**

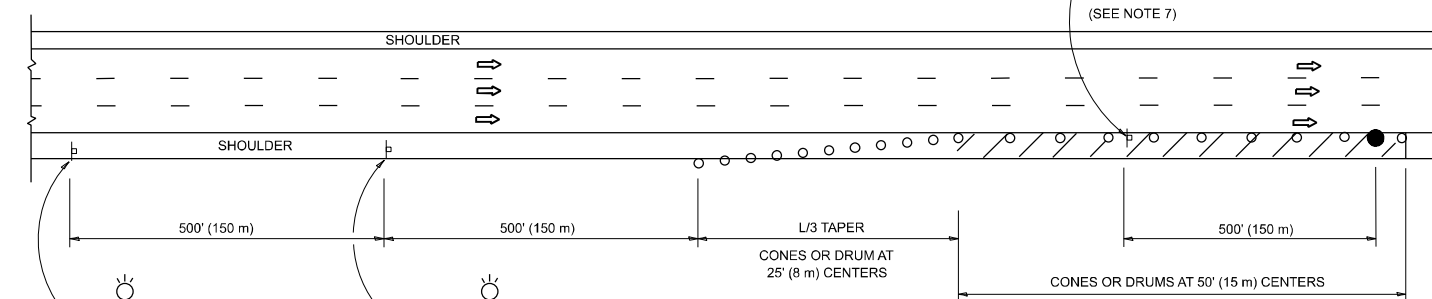
1. THE "L" DISTANCE EQUALS:
 

<b>SPEED LIMIT</b>	<b>FORMULAS</b>
45 mph (80 km/h) OR GREATER:	METRIC    ENGLISH L=0.65(W)(S)    L=(W)(S)
W = WIDTH OF OFFSET IN FEET (METERS) S = NORMAL POSTED SPEED MPH (KM/H)	
2. TYPE II BARRICADES OR DRUMS ARE REQUIRED FOR ALL NIGHTTIME CLOSURES. TYPE II BARRICADES OR DRUMS WITH MONODIRECTIONAL STEADY BURN LIGHTS ARE REQUIRED FOR DELINEATING OBSTACLES, EXCAVATIONS, OR HAZARDS EXCEEDING 100 FT (30m) IN LENGTH AT NIGHT.
3. ALL SIGNS SHALL BE POST MOUNTED IF THE CLOSURE TIME EXCEEDS FOUR DAYS.
4. FLASHING LIGHTS SHALL BE USED DURING THE HOURS OF DARKNESS AND SHALL BE INSTALLED ABOVE THE FIRST TWO SETS OF SIGNS.

**SHOULDER CLOSURE DETAILS**

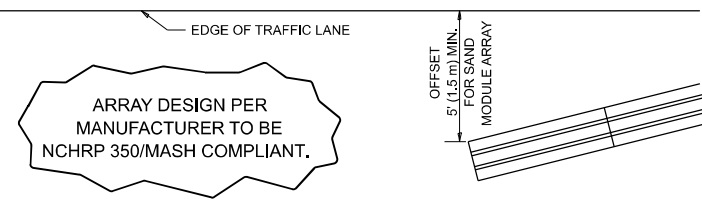


**PERMANENT SHOULDER CLOSURE**



**TEMPORARY SHOULDER CLOSURE**

- THIS DETAIL IS USED WHERE:
1. VEHICLES, EQUIPMENT, WORKERS OR THEIR ACTIVITIES ENCOACH IN AN AREA CLOSER THAN 15' (4.5 m) TO THE EDGE OF PAVEMENT FOR A PERIOD IN EXCESS OF 15 MINUTES.



**DETAIL "A"  
IMPACT ATTENUATOR, TEMPORARY  
(SEE NOTE 5)**

5. THE IMPACT ATTENUATOR, TEMPORARY IS NOT REQUIRED WHEN THE TEMPORARY CONCRETE BARRIER WALL IS PROTECTED BY OR IS TIED INTO THE EXISTING GUARDRAIL. IF OFFSET IS LESS THAN 5 FEET USE NARROW USE TYPE DEVICE TO MEET NCHRP350/MASH.
6. AUTHORIZATION FROM THE DISTRICT'S BUREAU OF TRAFFIC IS REQUIRED FOR ALL FREEWAY CLOSURES.
7. THE FLAGGER AND FLAGGER SIGN ARE REQUIRED AT THE ABOVE WORK SITES WHEN:
  - a. FOUR OR MORE WORK VEHICLES ENTER THE TRAFFIC LANES IN A ONE HOUR PERIOD.
  - b. THE WORK ACTIVITY REQUIRES FREQUENT ENCOACHMENT INTO THE LANE OPEN TO TRAFFIC.
 THE FLAGGER SHALL BE STATIONED APPROXIMATELY 100' (30 m) TO 200' (60 m) IN ADVANCE OF THE WORKERS.

8. 12' MIN. WIDTH TANGENT SECTION  
16' MIN. WIDTH CURVE SECTION.
9. TEMPORARY SHOULDER AND NON-SYSTEM INTERCHANGE PARTIAL RAMP CLOSURES ARE ALLOWED WEEKDAYS BETWEEN 9:00 A.M. AND 3:00 P.M. AND BETWEEN 7:00 P.M. AND 5:00 A.M. OR AS APPROVED BY THE EXPRESSWAY TRAFFIC OPERATIONS ENGINEER. PERMANENT SHOULDER AND PARTIAL RAMP CLOSURES WILL ONLY BE PERMITTED IF CALLED FOR IN THE PLANS OR AS APPROVED BY THE EXPRESSWAY OPERATIONS ENGINEER.

ALL DIMENSIONS ARE IN INCHES (MILLIMETERS) UNLESS OTHERWISE SHOWN.

MODEL: TC-17 (Sheet)  
FILE NAME: c:\p\work\wv\wv\yuyang.dwg\1191405D121426-shh-DtblStats.dgn

USER NAME = Yuyang,Deng	DESIGNED -	REVISED - M.D. 06-13
	DRAWN - D.W.S.	REVISED - M.D. 01-18
	CHECKED -	REVISED - M.D. 10-20
PLOT DATE = 1/13/2026	DATE - 11-96	REVISED - D.S. 05-24

**STATE OF ILLINOIS  
DEPARTMENT OF TRANSPORTATION**

**TRAFFIC CONTROL DETAILS FOR FREEWAY  
SHOULDER CLOSURES AND PARTIAL RAMP CLOSURES**

SCALE: NONE SHEET 1 OF 1 SHEETS STA. TO STA.

F.A. RTE.	SECTION	COUNTY	TOTAL SHEETS	SHEET NO.
VAR	2026-2149-DTR	VARIOUS	8	8
<b>TC-17</b>			CONTRACT NO. 80D22	
ILLINOIS FED. AID PROJECT				