

04-24-2026 LETTING ITEM 043

FOR INDEX OF SHEETS, SEE SHEET NO. 2

FOR INDEX OF HIGHWAY STANDARDS, SEE SHEET NO. 2

PROJECT IS LOCATED IN THE CITY OF AURORA

TRAFFIC DATA

S. EDGELAWN DRIVE

POSTED SPEED LIMIT: 30 MPH
DESIGN SPEED LIMIT: 35 MPH

ADT: 5,500 (2022)
ROADWAY CLASSIFICATION: MAJOR COLLECTOR

STATE OF ILLINOIS

DEPARTMENT OF TRANSPORTATION

PLANS FOR PROPOSED FEDERAL AID HIGHWAY

FAU 2504 (SOUTH EDGELAWN DRIVE)
SHARED-USE PATH
AT BURLINGTON NORTHERN SANTA FE RAILROAD

SECTION: 20-00335-00-FL
PROJECT: UNJA(541)
CITY OF AURORA
KANE COUNTY

C-91-095-21

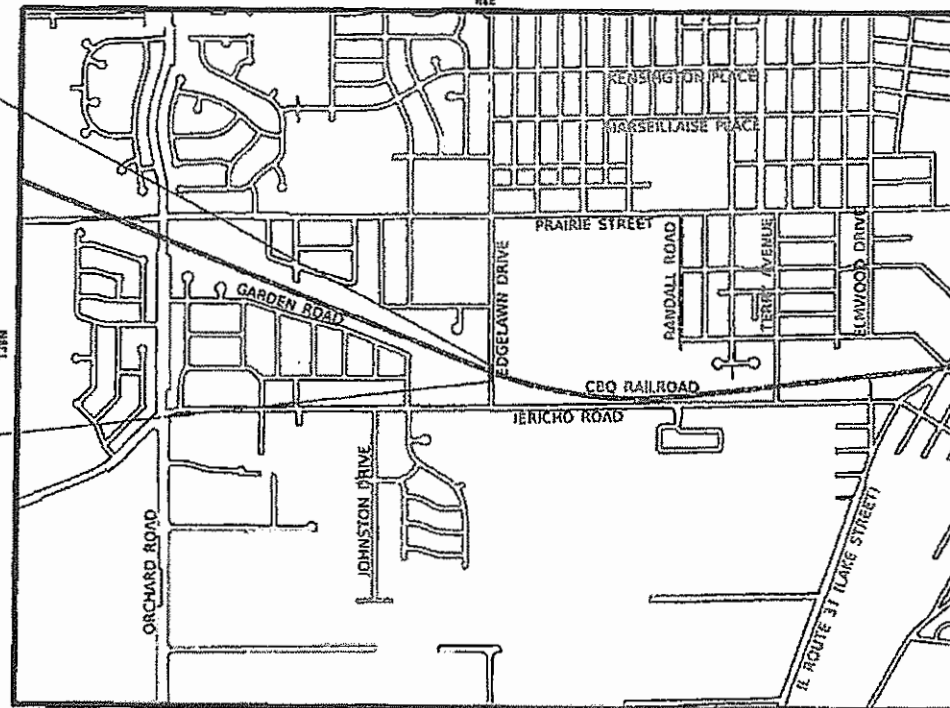
LOCATION MAP
NOT TO SCALE

F.A. RTE.	SECTION	COUNTY	TOTAL SHEETS	SHEET NO.
2504	20-00335-00-FL	KANE	25	1
UNJA(541)		ILLINOIS CONTRACT NO. 61M11		

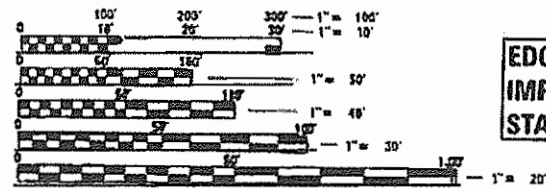


EDGELAWN DRIVE
IMPROVEMENT ENDS
STA. 22 + 06

EDGELAWN DRIVE
IMPROVEMENT BEGINS
STA. 20 + 15.58



GROSS LENGTH = 190.42 FT. = 0.036 MILE
NET LENGTH = 190.42 FT. = 0.036 MILE



FULL SIZE PLANS HAVE BEEN PREPARED USING STANDARD ENGINEERING SCALES. REDUCED SIZED PLANS WILL NOT CONFORM TO STANDARD SCALES. IN MAKING MEASUREMENTS ON REDUCED PLANS, THE ABOVE SCALES MAY BE USED.

JULIE, DESIGN STAGE REQUEST
DIG. No. X2229T0593 & X2229T0595



CONTACT JULIE AT 811 OR 800-892-0123 WITH THE FOLLOWING:

COUNTY = KANE
CITY-TOWNSHIP = AURORA - AURORA

SEC. & 1/4 SEC. NO. =
48 HOURS 42 hrs 4 days 5 BE FOR BUYD IG

CONTRACT NO. 61M11

BAXTER & WOODMAN

Consulting Engineers



PROJECT MANAGER
JOSHUA S. HARRIS

STATE OF ILLINOIS DEPARTMENT OF TRANSPORTATION DIVISION OF HIGHWAYS	
APPROVED	JANUARY 5th, 2026 <i>Stanley D. Brock</i> FOX VALLEY PARK DISTRICT
APPROVED	December 30, 2025 <i>John A. Chiles</i> CITY OF AURORA
PASSED	JANUARY 12, 2026 <i>John A. Chiles</i> DISTRICT 1 ENGINEER OF LOCAL ROADS AND STREETS
RELEASING FOR BID BASED ON LIMITED REVIEW	Jan 12, 2026 <i>John A. Chiles</i> REGIONAL ENGINEER

PRINTED BY THE AUTHORITY
OF THE STATE OF ILLINOIS

FEDERAL AID PROGRAM ENGINEER: CARMEN E. HARRIS, P.E., SCHLAUBURG, IL

GENERAL NOTES

- ALL CONSTRUCTION SHALL BE DONE IN ACCORDANCE WITH THE DETAILS IN THE PLANS, THE SPECIAL PROVISIONS INCLUDED IN THE CONTRACT DOCUMENTS, THE JANUARY 1, 2022 EDITION OF THE "THE STANDARD SPECIFICATIONS FOR ROAD AND BRIDGE CONSTRUCTION" (REFERRED TO AS THE "STANDARD SPECIFICATIONS"), THE JANUARY 1, 2026 EDITION OF THE "SUPPLEMENTAL SPECIFICATIONS AND RECURRING SPECIAL PROVISIONS", THE 11th EDITION OF THE "MANUAL ON UNIFORM TRAFFIC CONTROL DEVICES FOR STREETS AND HIGHWAYS" AND THE JANUARY 1, 2022 EDITION OF THE "MANUAL OF TEST PROCEDURES FOR MATERIALS".
- THE LOCATIONS OF PUBLIC OR PRIVATE UTILITIES SHOWN ON THE PLANS REPRESENTS ONLY THE OPINION OF THE CITY AND ARE ONLY INCLUDED FOR THE CONVENIENCE OF THE BIDDER AND THE ACCURACY IS NOT GUARANTEED. THE CONTRACTOR SHALL BE RESPONSIBLE FOR THE PROTECTION OF ALL UNDERGROUND OR SURFACE UTILITIES, INCLUDING SPRINKLER SYSTEMS, EVEN THOUGH THEY MAY NOT BE SHOWN ON THE PLANS. THE CONTRACTOR SHALL ALSO VERIFY THE DEPTHS OF THE EXISTING UTILITIES IF NECESSARY TO VERIFY THAT GRADE CONFLICTS WILL NOT OCCUR WITH ANY PROPOSED UTILITIES PRIOR TO CONSTRUCTION AND ORDERING ANY MATERIALS. ANY RELOCATION OR LOWERING OF UTILITIES SHALL BE COORDINATED BY THE CONTRACTOR.
- THE CONTRACTOR SHALL NOTIFY THE CITY PUBLIC WORKS ADMINISTRATOR AT LEAST 48 HOURS IN ADVANCE OF BEGINNING WORK TO OBTAIN CITY UTILITY LOCATIONS.
- THE INDISCRIMINATE USE OF FIRE HYDRANTS OR EXISTING STREAMS, CREEKS, WETLANDS OR PONDS IS STRICTLY PROHIBITED. THE CONTRACTOR SHALL PROVIDE A WATER TRUCK AND DRIVER AS REQUIRED TO OBTAIN AND TRANSPORT THIS WATER. THE CONTRACTOR SHALL BE RESPONSIBLE FOR OBTAINING WATER FROM AN APPROVED SOURCE. IF THIS WATER IS FROM A SOURCE OTHER THAN THEIR YARD, WRITTEN APPROVAL FROM THE AGENCY HAVING JURISDICTION FOR THE SOURCE OF THE WATER MUST BE RECEIVED BY THE ENGINEER PRIOR TO THE USE OF THE WATER. THE USE OF CITY WATER REQUIRES THE CONTRACTOR TO OBTAIN A METER FROM THE CITY'S WATER TREATMENT PLANT AND PROVIDE APPROPRIATE DEPOSIT.
- ACCESS TO PRIVATE DRIVEWAYS SHALL BE PROVIDED AT ALL TIMES EXCEPT DURING ACTUAL CONSTRUCTION ADJACENT THERE TO. TEMPORARY RAMPS SHALL BE CONSTRUCTED AS NEEDED TO PROVIDE SUCH ACCESS, UTILIZING CRUSHED STONE OR CRUSHED GRAVEL.
- IT WILL BE THE CONTRACTOR'S RESPONSIBILITY TO NOTIFY THE ENGINEER, RESIDENTS AND THE CITY WHEN ACCESS TO DRIVEWAYS WILL BE TEMPORARILY CLOSED DUE TO CURB AND GUTTER AND/OR DRIVEWAY REPLACEMENT. THE CONTRACTOR SHALL DISTRIBUTE NOTICES PROVIDED BY THE CITY TO RESIDENTS AT LEAST 24 HOURS PRIOR TO PLANNED CLOSURE. EVERY EFFORT SHALL BE MADE TO ACCOMMODATE ACCESS TO THESE PROPERTIES INCLUDING KNOCKING ON DOORS WHEN DRIVEWAYS ARE ABOUT TO BE CLOSED.
- THE CURB SHALL BE TAPERED TO THE GUTTER IN A FIVE (5) FOOT LENGTH WHEREVER THE CURB AND GUTTER TERMINATES, WITH AN EXPANSION JOINT PLACED AT THE START OF THE TAPER.
- A PORTABLE BATHROOM(S) SHALL BE PLACED ON THE JOB SITE(S) AND RELOCATED WHEN NECESSARY SO IT IS ACCESSIBLE TO WORKERS. IF WORK IS OCCURRING AT SEVERAL LOCATIONS, ONE PORTABLE BATHROOM SHALL BE PLACED AT EACH LOCATION WITHIN A REASONABLE DISTANCE FROM THE WORK AS DETERMINED BY THE ENGINEER.
- ALL REQUIRED CONSTRUCTION STAKING (BENCHMARK ESTABLISHMENT, ROW SIDEWALK, UTILITY LOCATION AND ELEVATIONS) SHALL BE THE RESPONSIBILITY OF THE CONTRACTOR. THE CONTRACTOR SHALL ASSUME FULL RESPONSIBILITY FOR DIMENSIONS AND ELEVATIONS MEASURED FROM CONTRACTOR'S STAKES. THE CONTRACTOR SHALL EXERCISE PROPER CARE IN THE PRESERVATION OF STAKES SET UNTIL THE ENGINEER'S APPROVAL FOR STAKE REMOVAL IS OBTAINED.
- ALL TREE PROTECTION, TREE PRUNING AND ROOT PRUNING SHALL BE COMPLETED BEFORE WORK OPERATIONS COMMENCE IN ANY AREA. AT NO TIME SHALL THE CONTRACTOR PRUNE OR REMOVE ANY TREES UNLESS SPECIFICALLY DETERMINED BY THE ENGINEER.
- IT IS THE CONTRACTOR'S SOLE RESPONSIBILITY TO COORDINATE WITH THE BNSF RAILROAD COMPANY WHENEVER CONSTRUCTION ACTIVITY IS WITHIN 25 FEET OF THE RAILROAD ROW. THE CONTRACTOR SHALL RETAIN FLAGMEN EMPLOYED AND DESIGNATED BY THE BNSF RAILROAD COMPANY TO MONITOR ON-COMING TRAIN TRAFFIC AND ADVISE CONTRACTOR PERSONNEL WHEN ACTIVITY ON OR NEAR THE RAILROAD RIGHT-OF-WAY MAY PROCEED. THIS ITEM WILL BE PAID FOR ACCORDING TO ARTICLE 107.12 AND WILL BE REIMBURSED ACCORDING TO ARTICLE 109.05.

INDEX OF SHEETS

- | | |
|---------|-------------------------------------------------------|
| 1 | COVER |
| 2 | GENERAL NOTES, HIGHWAY STANDARDS, AND INDEX OF SHEETS |
| 3 - 6 | SUMMARY OF QUANTITIES |
| 7 | TYPICAL SECTIONS |
| 8 | SCHEDULE OF QUANTITIES |
| 9 | ALIGNMENT, TIES, AND BENCHMARKS |
| 10 | EXISTING CONDITIONS AND REMOVAL PLAN |
| 11 | PLAN AND PROFILE |
| 12 | DETOUR PLAN |
| 13 | DETOUR NOTES |
| 14 | EROSION CONTROL AND LANDSCAPING PLAN |
| 15 | PAVEMENT MARKING AND SIGNING PLAN |
| 16 | MISCELLANEOUS DETAILS |
| 17 - 19 | DISTRICT ONE DETAILS - BD |
| 20 - 23 | DISTRICT ONE DETAILS - TC |
| 24 - 25 | CROSS SECTIONS |

HIGHWAY STANDARDS

- | | |
|-----------|---------------------------------------------------------------------------|
| 000001-09 | STANDARD SYMBOLS, ABBREVIATIONS AND PATTERNS |
| 606001-09 | CONCRETE CURB TYPE B AND COMBINATION CONCRETE CURB AND GUTTER |
| 606301-04 | PC CONCRETE ISLANDS AND MEDIANS |
| 635001-02 | DELINEATORS |
| 701001-02 | OFF-RD OPERATIONS, 2L, 2W, MORE THAN 15' (4.5 m) AWAY |
| 701006-05 | OFF-RD OPERATIONS, 2L, 2W, 15' (4.5 m) TO 24" (600 mm) FROM PAVEMENT EDGE |
| 701011-04 | OFF-RD MOVING OPERATIONS, 2L, 2W, DAY ONLY |
| 701301-04 | LANE CLOSURE, 2L, 2W, SHORT TIME OPERATIONS |
| 701311-03 | LANE CLOSURE 2L, 2W MOVING OPERATIONS - DAY ONLY |
| 701501-06 | URBAN LANE CLOSURE, 2L, 2W, UNDIVIDED |
| 701801-06 | SIDEWALK, CORNER OR CROSSWALK CLOSURE |
| 701901-11 | TRAFFIC CONTROL DEVICES |
| 720001-01 | SIGN PANEL MOUNTING DETAILS |
| 720006-04 | SIGN PANEL ERECTION DETAILS |
| 720011-01 | METAL POSTS FOR SIGNS, MARKERS & DELINEATORS |
| 728001-01 | TELESCOPING STEEL SIGN SUPPORT |
| 729001-01 | APPLICATIONS OF TYPES A & B METAL POSTS (FOR SIGNS & MARKERS) |
| 731001-01 | BASE FOR TELESCOPING STEEL SIGN SUPPORT |
| 780001-05 | TYPICAL PAVEMENT MARKINGS |

DISTRICT ONE DETAILS

- | | |
|-------|----------------------------------------------------------------------------|
| BD-24 | CURB OR CURB AND GUTTER REMOVAL AND REPLACEMENT |
| BD-32 | BUTT JOINT AND HMA TAPER DETAILS |
| BD-58 | CITY OF CHICAGO DETECTABLE WARNINGS |
| TC-10 | TRAFFIC CONTROL AND PROTECTION FOR SIDE ROADS, INTERSECTIONS AND DRIVEWAYS |
| TC-13 | DISTRICT ONE TYPICAL PAVEMENT MARKINGS |
| TC-21 | DETOUR SIGNING FOR CLOSING STATE HIGHWAYS |
| TC-22 | ARTERIAL ROAD INFORMATION SIGN |

COMMITMENTS

- ANY TEMPORARY WETLAND IMPACTS SHALL BE MITIGATED VIA RESTORING ORIGINAL CONTOURS AND RE-SEEDING WITH CLASS 4B/5B SEED MIXTURE IN ACCORDANCE WITH SECTION 250 OF IDOT'S STANDARD SPECIFICATION FOR ROAD AND BRIDGE CONSTRUCTION.

STATE OF ILLINOIS - PROFESSIONAL DESIGN FIRM
 LICENSE NO. - 184-001121 - EXPIRES 4/30/2025
 mzhao 3/30/2026 7:51:01 AM
 ...\\pc\dtr\p\pdf-BW_Default.plt
 ...\\CAD\Plot\201383-Plasell.tbl
 P:\AR0\RD\201383-S.Edgelawn Drive at\CAD\Sheets\201383_SHT-GenNotes.dgn
 THE USER: P:\AR0\RD\201383-S.Edgelawn Drive at\CAD\Sheets\201383_SHT-GenNotes.dgn



USER NAME = mzhao	DESIGNED -	REVISED -
	DRAWN -	REVISED -
PLOT SCALE = 40.0000' / in.	CHECKED -	REVISED +
PLOT DATE = 3/30/2026	DATE = 3/30/2026	FILE = 201383_SHT-GenNotes.dgn

STATE OF ILLINOIS
 DEPARTMENT OF TRANSPORTATION

**GENERAL NOTES, HIGHWAY STANDARDS,
 DISTRICT ONE DETAILS, AND INDEX OF SHEETS**

SCALE: N.T.S. SHEET 1 OF 1 SHEETS STA. TO STA.

F.A. RTE.	SECTION	COUNTY	TOTAL SHEETS	SHEET NO.
2504	20-00335-00-FL	KANE	25	2
				CONTRACT NO. 61M11
ILLINOIS FED. AID PROJECT UNJAI541				

STATE OF ILLINOIS - PROFESSIONAL DESIGN FIRM
 LICENSE NO. - 184-001121 - EXPIRES 4/30/2025
 mzhao 3/30/2026 7:51:02 AM
 P:\ARORC\201383-5_EdgeLawn Drive atCAD\Sheets\201383_SHT-SOQ.dgn
 PLOT DATE = 3/30/2026



USER NAME = mzhao	DESIGNED -	REVISED -
PLOT SCALE = 40,000' / 1"	DRAWN -	REVISED -
PLOT DATE = 3/30/2026	CHECKED -	REVISED -
	DATE = 3/30/2026	FILE = 201383_SHT-SOQ.dgn

STATE OF ILLINOIS
 DEPARTMENT OF TRANSPORTATION

SUMMARY OF QUANTITIES			
SCALE: N.T.S.	SHEET 1	OF 4 SHEETS	STA. TO STA.

F.A. RTE.	SECTION	COUNTY	TOTAL SHEETS	SHEET NO.
2504	20-00335-00-FL	KANE	25	3
CONTRACT NO. 61M11				
ILLINOIS FED. AID PROJECT UN1A15411				

CODE NO.	ITEM	UNIT	TOTAL QUANTITY	CONSTRUCTION CODE	
				90% RRP	10% Local
				Roadway	Urban
20101100	TREE TRUNK PROTECTION	EACH	1	1	1
20101200	TREE ROOT PRUNING	EACH	1	1	1
20101350	TREE PRUNING (OVER 10 INCH DIAMETER)	EACH	1	1	1
20200100	EARTH EXCAVATION	CU YD	17	17	
20201200	REMOVAL AND DISPOSAL OF UNSUITABLE MATERIAL	CU YD	9	9	
20400800	FURNISHED EXCAVATION	CU YD	12	12	
21001000	GEOTECHNICAL FABRIC FOR GROUND STABILIZATION	SQ YD	210	210	
28000400	PERIMETER EROSION BARRIER	FOOT	190	190	
30300001	AGGREGATE SUBGRADE IMPROVEMENT	CU YD	40	40	
35101600	AGGREGATE BASE COURSE, TYPE B 4"	SQ YD	33	33	
35101800	AGGREGATE BASE COURSE, TYPE B 6"	SQ YD	208	208	
35800100	PREPARATION OF BASE	SQ YD	33	33	
40200900	AGGREGATE SURFACE COURSE, TYPE B	CU YD	8	8	
40600275	BITUMINOUS MATERIALS (PRIME COAT)	POUND	1,332	1,332	
40600290	BITUMINOUS MATERIALS (TACK COAT)	POUND	180	180	
40600982	HOT-MIX ASPHALT SURFACE REMOVAL - BUTT JOINT	SQ YD	25	25	

* INDICATES SPECIALTY ITEM

STATE OF ILLINOIS - PROFESSIONAL DESIGN FIRM
 LICENSE NO. - 184-001121 - EXPIRES 4/30/2025
 mzhaob 3/30/2026 7:51:02 AM
 MODEL: P:\ARORC\0201383-5_Edgelawn Drive at ICA\DWG\SHEETS\201383_SHT-50Q.dgn
 USER: mzhaob
 FILE NAME: P:\ARORC\0201383-5_Edgelawn Drive at ICA\DWG\SHEETS\201383_SHT-50Q.dgn



USER NAME = mzhaob	DESIGNED -	REVISED -
PLOT SCALE = 40.0000' / in.	DRAWN -	REVISED -
PLOT DATE = 3/30/2026	CHECKED -	REVISED -
	DATE - 3/30/2026	FILE - 201383_SHT-50Q.dgn

STATE OF ILLINOIS
 DEPARTMENT OF TRANSPORTATION

SUMMARY OF QUANTITIES			
SCALE: N.T.S.	SHEET 2	OF 4 SHEETS	STA. TO STA.

F.A. RTE	SECTION	COUNTY	TOTAL SHEETS	SHEET NO.
2504	20-00335-00-FL	KANE	25	4
CONTRACT NO. 61M11				
ILLINOIS FED. AID PROJECT UNIA1541				

CODE NO.	ITEM	UNIT	TOTAL QUANTITY	CONSTRUCTION CODE	
				90% RRP	10% Local
				Roadway	
				0021	Urban
40604060	HOT-MIX ASPHALT SURFACE COURSE, IL-9.5, MIX "D", N50	TON	113		113
44000100	PAVEMENT REMOVAL	SQ YD	39		39
44000157	HOT-MIX ASPHALT SURFACE REMOVAL, 2"	SQ YD	592		592
44000500	COMBINATION CURB AND GUTTER REMOVAL	FOOT	36		36
44201713	CLASS D PATCHES, TYPE I, 6 INCH	SQ YD	30		30
44201717	CLASS D PATCHES, TYPE II, 6 INCH	SQ YD	30		30
44201721	CLASS D PATCHES, TYPE III, 6 INCH	SQ YD	30		30
44201723	CLASS D PATCHES, TYPE IV, 6 INCH	SQ YD	30		30
48101500	AGGREGATE SHOULDERS, TYPE B 6"	SQ YD	104		104
60603800	COMBINATION CONCRETE CURB AND GUTTER, TYPE B-6.12	FOOT	27		27
* 66900200	NON-SPECIAL WASTE DISPOSAL	CU YD	9		9
* 66900530	SOIL DISPOSAL ANALYSIS	EACH	5		5
* 66901001	REGULATED SUBSTANCES PRE-CONSTRUCTION PLAN	LSUM	1		1
* 66901003	REGULATED SUBSTANCES FINAL CONSTRUCTION REPORT	LSUM	1		1
* 66901006	REGULATED SUBSTANCES MONITORING	CAL DAY	10		10
67100100	MOBILIZATION	LSUM	1		1

* INDICATES SPECIALTY ITEM

STATE OF ILLINOIS - PROFESSIONAL DESIGN FIRM
 LICENSE NO. - 184-001121 - EXPIRES 4/30/2025
 mzhaoo 3/30/2026 7:51:03 AM
 P:\ARORC\20201383-5-Edgelawn Drive atCAD\Sheets\201383_SHT-SOQ.dgn
 P:\ARORC\20201383-5-Edgelawn Drive atCAD\Sheets\201383_SHT-SOQ.dgn



USER NAME = mzhaoo	DESIGNED -	REVISED -
PLOT SCALE = 40.0000' / in	DRAWN -	REVISED -
PLOT DATE = 3/30/2026	CHECKED -	REVISED -
	DATE - 3/30/2026	FILE - 201383_SHT-SOQ.dgn

STATE OF ILLINOIS
 DEPARTMENT OF TRANSPORTATION

SUMMARY OF QUANTITIES

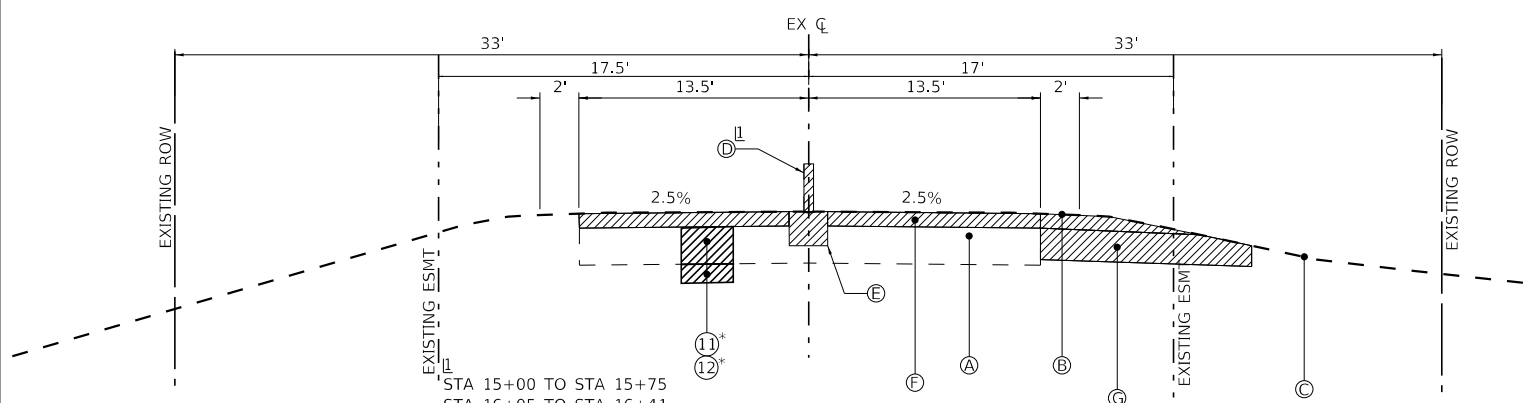
SCALE: N.T.S.	SHEET 3 OF 4 SHEETS	STA. TO STA.
---------------	---------------------	--------------

F.A. RTE	SECTION	COUNTY	TOTAL SHEETS	SHEET NO.
2504	20-00335-00-FL	KANE	25	5
			CONTRACT NO. 61M11	
ILLINOIS FED. AID PROJECT UNIA(541)				

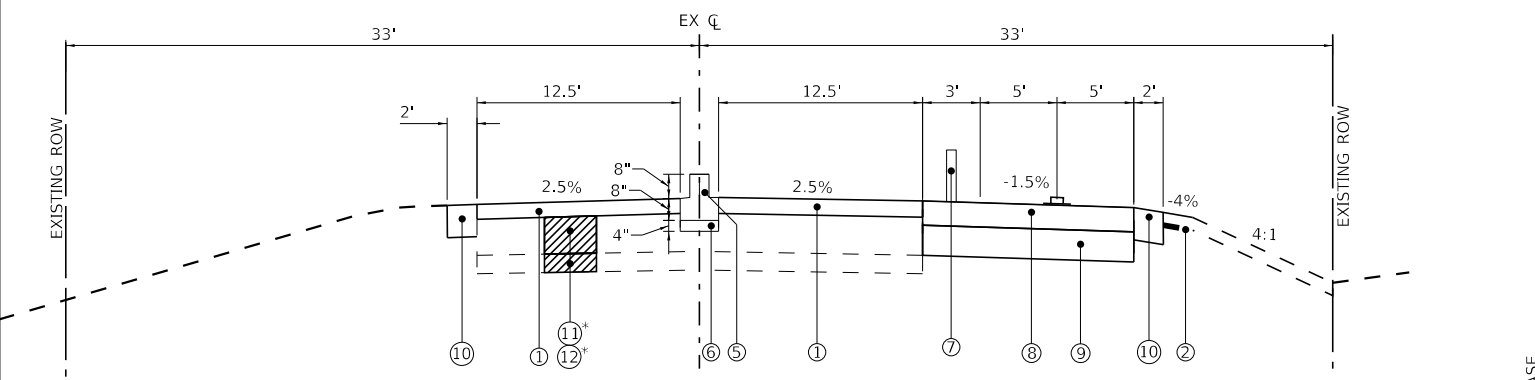
CODE NO.	ITEM	UNIT	TOTAL QUANTITY	CONSTRUCTION CODE	
				90% RRP 10% Local	
				Roadway 0021 Urban	
* 72000100	SIGN PANEL - TYPE 1	SQ FT	126	126	
72400100	REMOVE SIGN PANEL ASSEMBLY - TYPE A	EACH	1	1	
72400205	REMOVE AND RELOCATE SIGN PANEL ASSEMBLY - TYPE A	EACH	2	2	
* 72800100	TELESCOPING STEEL SIGN SUPPORT	FOOT	142	142	
* 78000100	THERMOPLASTIC PAVEMENT MARKING - LETTERS AND SYMBOLS	SQ FT	119	119	
* 78000200	THERMOPLASTIC PAVEMENT MARKING - LINE 4"	FOOT	509	509	
* 78000400	THERMOPLASTIC PAVEMENT MARKING - LINE 6"	FOOT	42	42	
* 78000650	THERMOPLASTIC PAVEMENT MARKING - LINE 24"	FOOT	42	42	
X4240800	DETECTABLE WARNINGS (SPECIAL)	SQ FT	40	40	
X6060714	CONCRETE MEDIAN (SPECIAL)	SQ FT	270	270	
X6350120	DELINEATOR REMOVAL	EACH	2	2	
X6350108	FLEXIBLE DELINEATORS	EACH	7	7	
X7010216	TRAFFIC CONTROL AND PROTECTION, (SPECIAL)	LSUM	1	1	
X7200061	TEMPORARY INFORMATION SIGNING	SQ FT	52	52	
Z0019600	DUST CONTROL WATERING	UNIT	5	5	
Z0013798	CONSTRUCTION LAYOUT	LSUM	1	1	

* INDICATES SPECIALTY ITEM

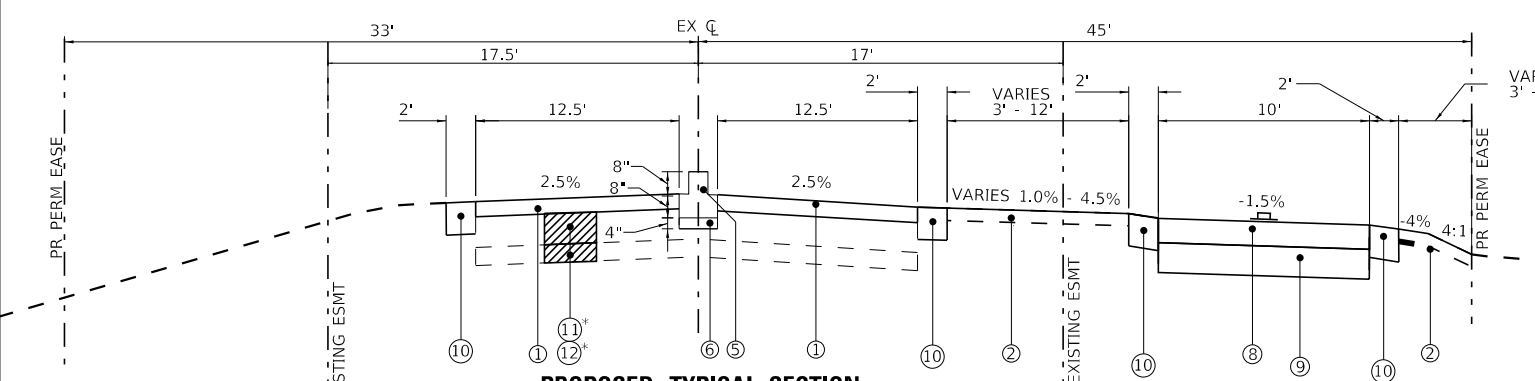
STATE OF ILLINOIS - PROFESSIONAL DESIGN FIRM
 LICENSE NO. - 184-001121 - EXPIRES 4/30/2025
 mzhao 3/30/2026 7:51:04 AM
 FILE NAME: P:\03\0201383-5\Edgelawn Drive atCAD\Sheets\201383_SHT-TypSec.dgn
 ...:\Pic\dry\pdf\BW_Default.rtf
 ...:\CAD\Plot\201383_Phase1.tbl
 P:\ARORC\201383-5\Edgelawn Drive atCAD\Sheets\201383_SHT-TypSec.dgn



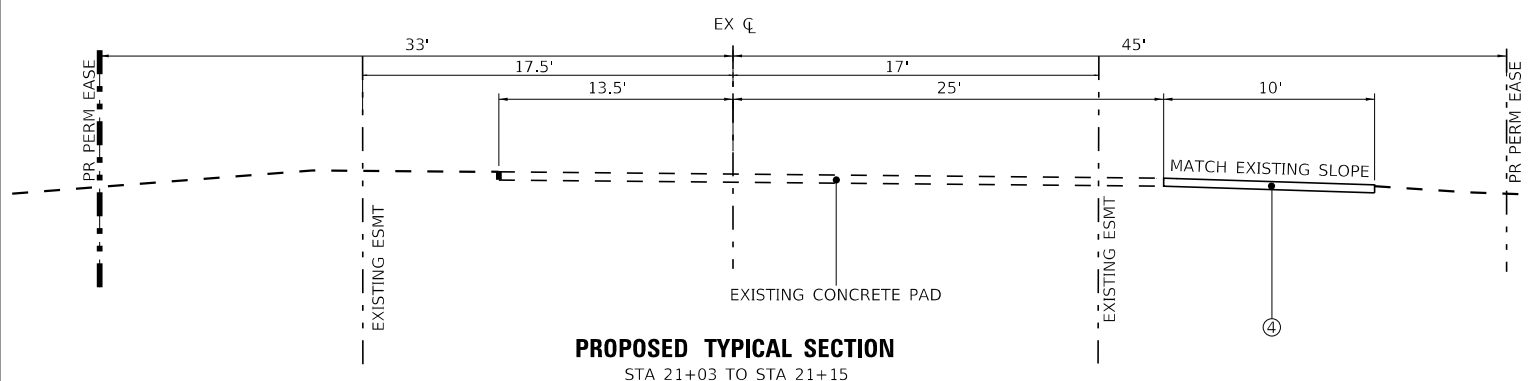
EXISTING TYPICAL SECTION
 STA 15+00 TO STA 15+75
 STA 16+05 TO STA 16+41



PROPOSED TYPICAL SECTION
 STA 20+15 TO STA 20+44
 STA 21+63 TO STA 22+06
 * AS DETERMINED BY THE ENGINEER



PROPOSED TYPICAL SECTION
 STA 20+44 TO STA 21+03
 * AS DETERMINED BY THE ENGINEER



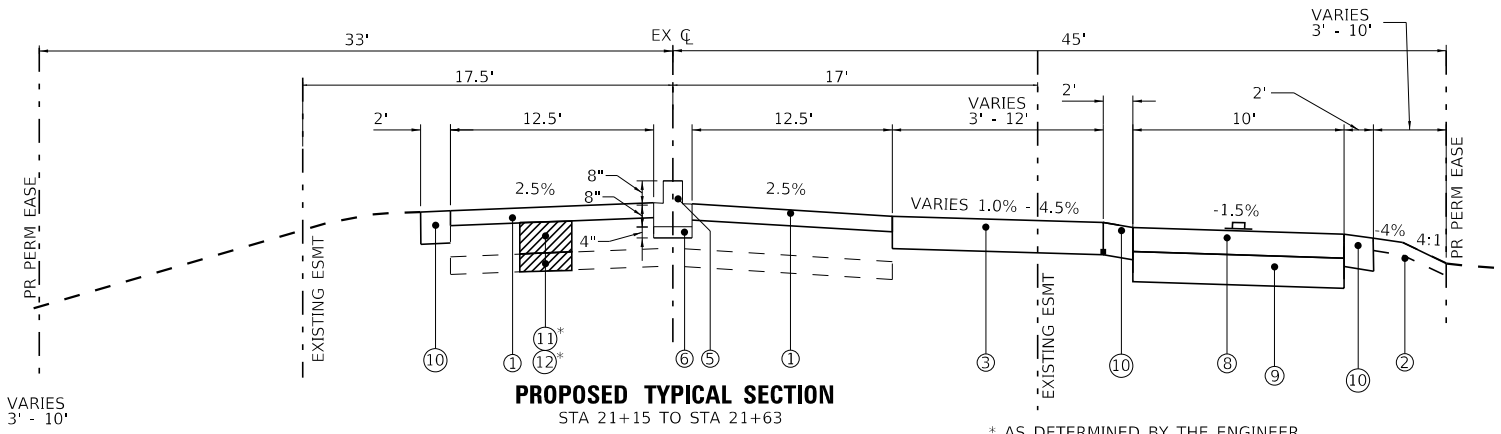
PROPOSED TYPICAL SECTION
 STA 21+03 TO STA 21+15
 LOCATION ON RAILROAD TRACKS

EXISTING LEGEND

- (A) EXISTING ROADWAY PAVEMENT
- (B) HOT MIX ASPHALT SHOULDER
- (C) EXISTING GROUND
- (D) REFLECTIVE CHANNELIZATION PANELS
- (E) SUBBASE GRANULAR MATERIAL
- (F) HOT-MIX ASPHALT SURFACE REMOVAL, 2"
- (G) REMOVAL AND DISPOSAL OF UNSUITABLE MATERIAL
- (Hatched) ITEM TO BE REMOVED

PROPOSED LEGEND

- (1) HOT MIX ASPHALT SURFACE COURSE, IL-9.5, MIX "D", N50 - 2"
- (2) PARKWAY RESTORATION - SPECIAL
- (3) AGGREGATE SURFACE COURSE, TYPE B - 6"
- (4) CONCRETE PAD (BY OTHERS)
- (5) CONCRETE MEDIAN (SPECIAL)
- (6) AGGREGATE BASE COURSE, TYPE B - 4"
- (7) FLEXIBLE DELINEATORS
- (8) HOT MIX ASPHALT SURFACE COURSE, IL 9.5, MIX "D", N50 - 4"
- (9) AGGREGATE BASE COURSE, TYPE B - 6"
- (10) AGGREGATE SHOULDERS, TYPE B - 6"
- (11) CLASS D PATCHES, 6"
- (12) AGGREGATE SUBGRADE IMPROVEMENT



PROPOSED TYPICAL SECTION
 STA 21+15 TO STA 21+63
 * AS DETERMINED BY THE ENGINEER

HOT-MIX ASPHALT MIXTURE REQUIREMENTS

MIXTURE TYPE	AIR VOIDS @ Ndes	QMP
SHARED USE PATH		
HOT-MIX ASPHALT SURFACE COURSE, MIX "D", IL-9.5, N50, 4" (IN 2 LIFTS)	4% @ 50 Gyr.	LR1030-2
HOT-MIX ASPHALT RE SURFACING		
HOT-MIX ASPHALT SURFACE COURSE, MIX "D", IL-9.5, N50, 2"	4% @ 50 Gyr.	LR1030-2
PATCHING		
CLASS D PATCHES (HMA BINDER IL-19.0), 6"	4% @ 70 Gyr.	LR1030-2
QMP Designations: Quality Control/Quality Assurance (QC/QA); PER LR1030-02		

THE UNIT WEIGHT USED TO CALCULATE ALL HMA SURFACE MIXTURE QUANTITIES IS 112 LBS/SQ YD/IN.
 THE "AC TYPE" FOR POLYMERIZED HMA MIXES SHALL BE "SBS/SBR PG 76-22" AND FOR NON-POLYMERIZED HMA THE "AC TYPE" SHALL BE "PG 64-22" UNLESS MODIFIED BY RECLAIMED MATERIALS SPECIFICATIONS.



USER NAME = mzhao	DESIGNED -	REVISED -
PLOT SCALE = 40.0000' / in.	DRAWN -	REVISED -
PLOT DATE = 3/30/2026	CHECKED -	REVISED -
	DATE - 3/30/2026	FILE - 201383_SHT-TypSec.dgn

STATE OF ILLINOIS
 DEPARTMENT OF TRANSPORTATION

**TYPICAL SECTIONS AND
 HOT-MIX ASPHALT REQUIREMENTS**

SCALE: N.T.S. SHEET 1 OF 1 SHEETS STA. TO STA.

F.A. RTE.	SECTION	COUNTY	TOTAL SHEETS	SHEET NO.
2504	20-00335-00-FL	KANE	25	7
CONTRACT NO. 61M11				
ILLINOIS FED. AID PROJECT UNJAI541				

EARTHWORK									
LOCATION	TOPSOIL			D=C	E	F	H=(F-E+G)* 0.85	I	J=H-I
	A	B	C=A-B						
	TOPSOIL EXCAVATION (CU YD)	TOPSOIL PLACEMENT (CU YD)	TOPSOIL BALANCE WASTE (+) OR SHORTAGE (-) (CU YD)	REMOVAL & DISPOSAL OF UNSUITABLE MATERIAL (CU YD)	UNDERCUT PAID FOR AS EARTH EXCAVATION (CU YD)	EARTH EXCAVATION (CU YD)	EXCAVATION TO BE USED IN EMBANKMENT (15% SHRINKAGE) (CU YD)	EMBANKMENT (CU YD)	EARTHWORK BALANCE WASTE (+) OR SHORTAGE (-) (CU YD)
SOUTH EDGELAWN DRIVE STATION 20+15 to 22+00	26	17	9	9	-	17	15	27	(12)
TOTAL	26	17	9	9	-	17	15	27	(12)

Column A - Topsoil removal quantity from cross sections (topsoil removed at 4" depth).
Column B - Topsoil required for final condition (topsoil installed at 4" depth).
Column C - Topsoil balance after removing non-special waste.
Column D - Excess topsoil material.
Column E - Additional cut material that is determined to be either unstable or unsuitable for use in embankment. Contingency quantity.
Column F - Cut quantity from cross sections.
Column G - NOT USED
Column H - Cut quantities that are acceptable for use in embankment multiplied by a shrinkage factor.
Column I - Fill quantities from cross sections.
Column J - Off-site material needed or material waste.

(20200100) EARTH EXCAVATION	17	CU YD
(20201200) REMOVAL AND DISPOSAL OF UNSUITABLE MATERIAL	9	CU YD
(20400800) FURNISHED EXCAVATION	12	CU YD
(XX007278) PARKWAY RESTORATION (SPECIAL)	188	SQ YD

STATE OF ILLINOIS - PROFESSIONAL DESIGN FIRM
LICENSE NO. - 184-001121 - EXPIRES 4/30/2025
mzhao 3/30/2026 7:51:05 AM
...\\pltdrv\p\pdf\BW_Default.rvt
...\\CAD\Plot\201383_Phase1.tbl
P:\ARORC\201383-5_Edgelawn Drive at\CAD\Sheets\201383_SHT-Schedules.dgn



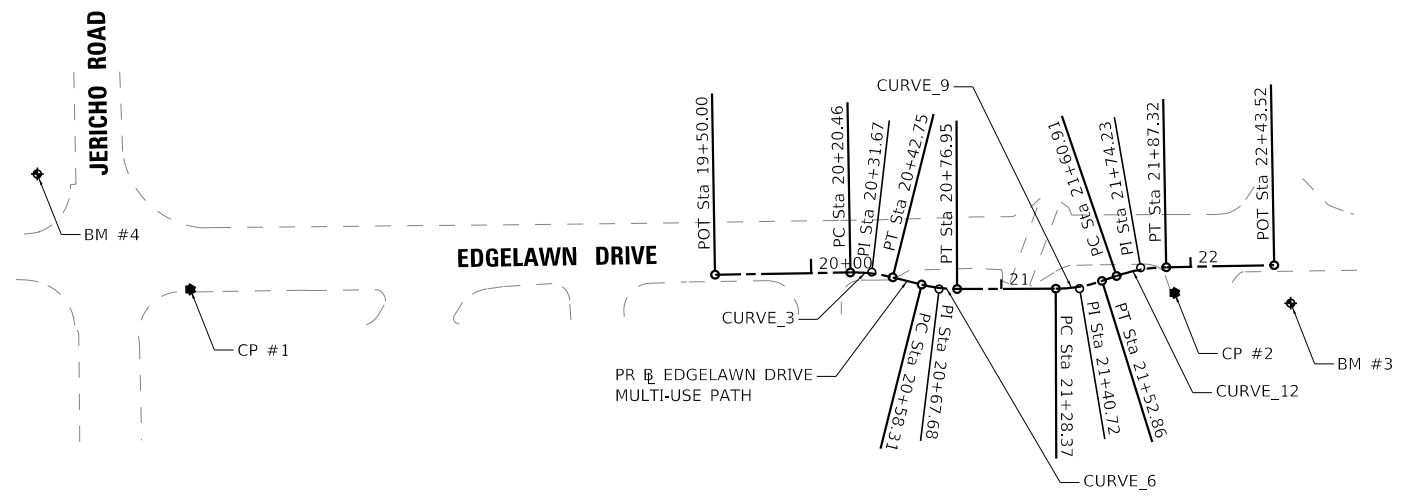
USER NAME = mzhao	DESIGNED -	REVISED -
	DRAWN -	REVISED -
PLOT SCALE = 40.0000 ' / in.	CHECKED -	REVISED -
PLOT DATE = 3/30/2026	DATE - 3/30/2026	FILE - 201383_SHT-Schedules.dgn

STATE OF ILLINOIS
DEPARTMENT OF TRANSPORTATION

SCHEDULE OF QUANTITIES

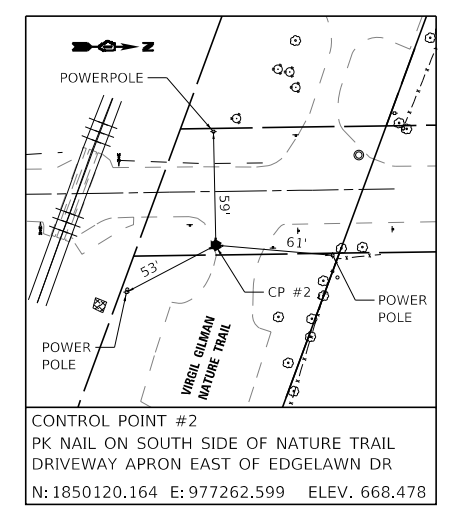
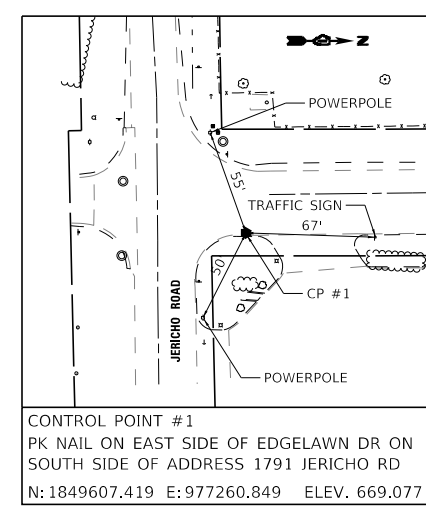
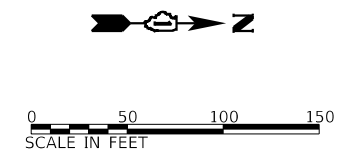
SCALE: N.T.S. SHEET 1 OF 1 SHEETS STA. TO STA.

F.A. RTE.	SECTION	COUNTY	TOTAL SHEETS	SHEET NO.
2504	20-00335-00-FL	KANE	25	8
CONTRACT NO. 61M11			ILLINOIS FED. AID PROJECT UNJAI541	



CURVE DATA

PROP. CURVE BIREVISED_3 PI STA. = 20+31.67 $\Delta = 15^\circ 01' 39''$ (RT) $D = 67^\circ 24' 24''$ $R = 85.00'$ $T = 11.21'$ $L = 22.29'$ $E = 0.74'$ $e = N/A$ T.R. = N/A S.E. RUN = N/A P.C. STA. = 20+20.46 P.T. STA. = 20+42.75	PROP. CURVE BIREVISED_6 PI STA. = 20+67.68 $\Delta = 14^\circ 14' 29''$ (LT) $D = 76^\circ 23' 40''$ $R = 75.00'$ $T = 9.37'$ $L = 18.64'$ $E = 0.58'$ $e = N/A$ T.R. = N/A S.E. RUN = N/A P.C. STA. = 20+58.31 P.T. STA. = 20+76.95
PROP. CURVE BIREVISED_9 PI STA. = 21+40.72 $\Delta = 18^\circ 42' 25''$ (LT) $D = 76^\circ 23' 40''$ $R = 75.00'$ $T = 12.35'$ $L = 24.49'$ $E = 1.01'$ $e = N/A$ T.R. = N/A S.E. RUN = N/A P.C. STA. = 21+28.37 P.T. STA. = 21+52.86	PROP. CURVE BIREVISED_12 PI STA. = 21+74.23 $\Delta = 17^\circ 48' 07''$ (RT) $D = 67^\circ 24' 24''$ $R = 85.00'$ $T = 13.31'$ $L = 26.41'$ $E = 1.04'$ $e = N/A$ T.R. = N/A S.E. RUN = N/A P.C. STA. = 21+60.91 P.T. STA. = 21+87.32



BENCHMARK #3

MINI RRS ON WEST SIDE OF POWERPOLE ON EAST SIDE OF EDGELAWN DRIVE APPROX. 100' NORTH OF RAILROAD.

 STA. 21+91.34, 13.43' RT
 ELEV. 669.503

BENCHMARK #4

TAGGED BURY BOLT ON SOUTHEAST SIDE OF FIRE HYDRANT ON SOUTH SIDE OF JERICHO ROAD AT EDGELAWN DRIVE.

 N = 1849527.701 E = 977200.697
 ELEV. 670.652

STATE OF ILLINOIS - PROFESSIONAL DESIGN FIRM
 LICENSE NO. - 184-001121 - EXPIRES 4/30/2025
 mzhao 3/30/2026 7:51:06 AM
 FILE NAME: P:\303\0201383-5-Edgelawn Drive at Jericho Road\Sheets\201383_SHT-ATB_01.dgn



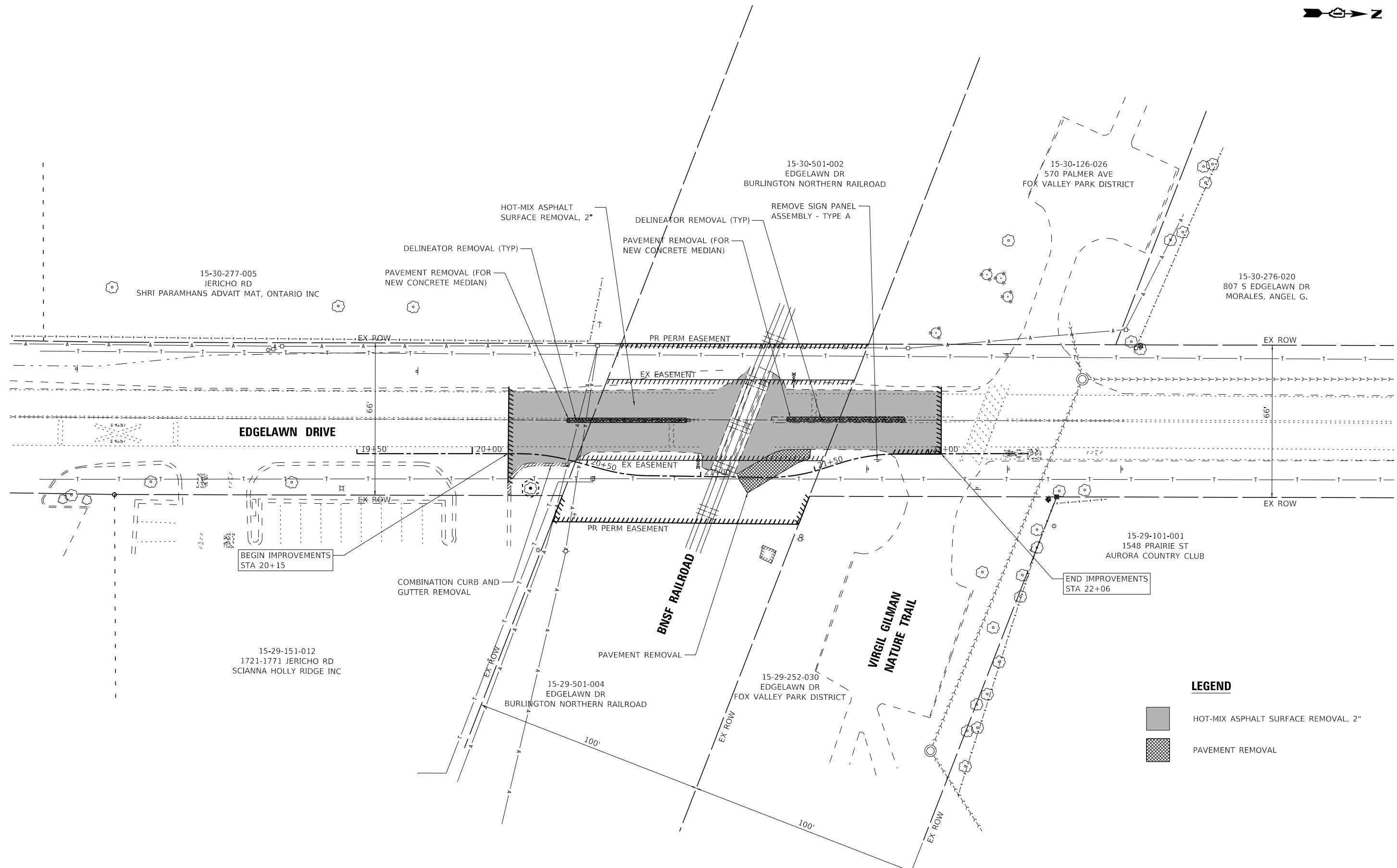
USER NAME = mzhao	DESIGNED -	REVISED -
DRAWN -	REVISED -	
PLOT SCALE = 100.0000' / in.	CHECKED -	REVISED -
PLOT DATE = 3/30/2026	DATE = 3/30/2026	FILE = 201383_SHT-ATB_01.dgn

STATE OF ILLINOIS
 DEPARTMENT OF TRANSPORTATION

ALIGNMENT, TIES, AND BENCHMARKS

SCALE: 1" = 50'	SHEET 1 OF 1 SHEETS	STA. TO STA.
-----------------	---------------------	--------------

F.A. RTE.	SECTION	COUNTY	TOTAL SHEETS	SHEET NO.
2504	20-00335-00-FL	KANE	25	9
CONTRACT NO. 61M11				
ILLINOIS FED. AID PROJECT UNJAI(541)				



LEGEND

	HOT-MIX ASPHALT SURFACE REMOVAL, 2"
	PAVEMENT REMOVAL

STATE OF ILLINOIS - PROFESSIONAL DESIGN FIRM
 LICENSE NO. - 184-001121 - EXPIRES 4/30/2025
 mzhao 3/30/2026 7:51:08 AM
 FILE: \\baxterwoodman.com\public\201383-Edgelawn Drive - 201383_SHT-Removal_01.dgn



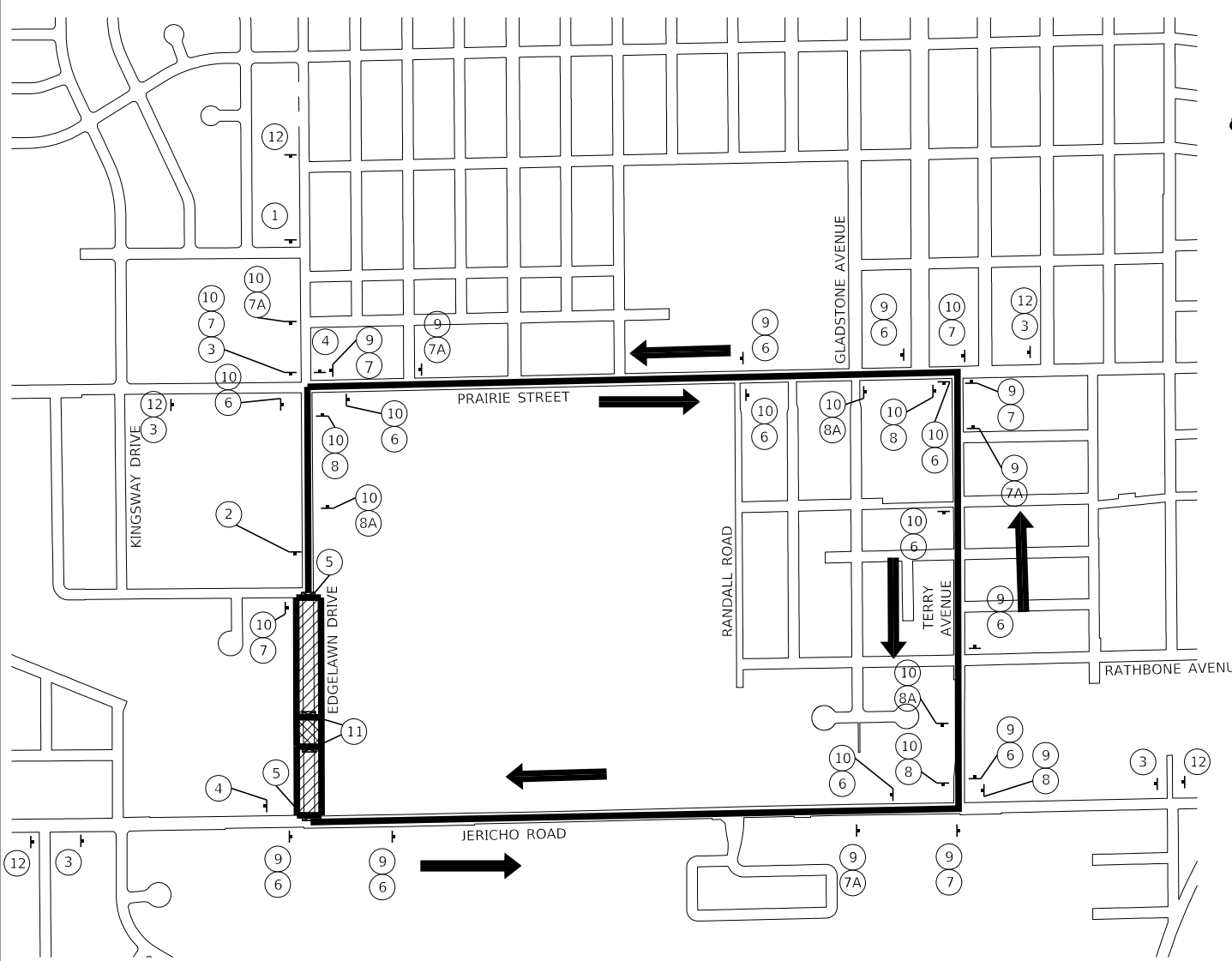
USER NAME = mzhao	DESIGNED -	REVISED -
	DRAWN -	REVISED -
PLOT SCALE = 40,0000' / in.	CHECKED -	REVISED -
PLOT DATE = 3/30/2026	DATE - 3/30/2026	FILE - 201383_SHT-Removal_01.dgn

STATE OF ILLINOIS
 DEPARTMENT OF TRANSPORTATION






EXISTING CONDITIONS AND REMOVAL PLAN
 SCALE: 1" = 20' SHEET 1 OF 1 SHEETS STA. TO STA.

F.A. RTE.	SECTION	COUNTY	TOTAL SHEETS	SHEET NO.
2504	20-00335-00-FL	KANE	25	10
CONTRACT NO. 61M11				
ILLINOIS FED. AID PROJECT UNJAI541				

STATE OF ILLINOIS - PROFESSIONAL DESIGN FIRM
 LICENSE NO. - 184-001121 - EXPIRES 4/30/2025
 mzhao 3/30/2026 7:51:10 AM
 FILE: \\mzhao\p\201383-5-Edgelawn.Dwg atCAD\Sheets\201383_SHT-Detour_01.dgn

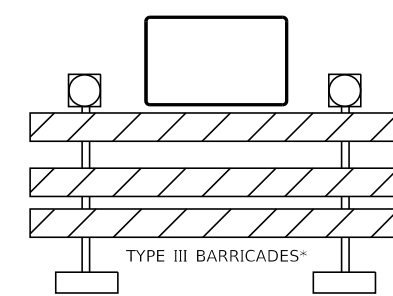


LEGEND




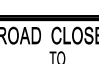
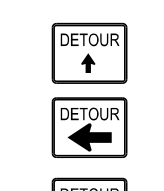







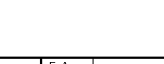
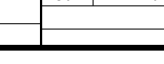
-  PROJECT LOCATION
-  ROADWAY CLOSED TO THRU TRAFFIC
-  DETOUR ROUTE
-  TRAFFIC DIRECTION
-  TYPE III BARRICADE*

DETOUR NOTES

1. DETOUR SIGNAGE SHALL BE CONSIDERED INCLUDED IN THE COST FOR TEMPORARY TRAFFIC CONTROL AND PROTECTION (SPECIAL) EXCEPT OTHERWISE NOTED.
2. THE CONTRACTOR SHALL NOT OBSTRUCT ANY EXISTING SIGN WITH THE PLACEMENT OF DETOUR SIGNAGE.
3. SEE DETAIL TC-21 FOR TYPICAL SIGN SPACING.
4. ALL DETOUR SIGNS SHALL BE ERECTED AND COORDINATED WITH THE ENGINEER PRIOR TO ROAD CLOSURE.



* IF A TYPE III BARRICADE WITH AN ATTACHED SIGN PANEL WHICH MEETS NCHRP 350 REQUIREMENTS IS NOT AVAILABLE, THE SIGNS SHALL BE MOUNTED, ABOVE THE BARRICADES, ON SEPERATE SIGNS SUPPOTS THAT MEET NCHRP 350 REQUIREMENTS

- ①  ROAD CLOSED AHEAD
W20-3(3)-48
36 X 36
- ②  ROAD CLOSED 500 FT
W20-3(O)-48
36 X 36
- ③  DETOUR AHEAD
W20-2A
36 X 36
- ④  END DETOUR
M4-8A
24 X 18
- ⑤  ROAD CLOSED TO THRU TRAFFIC
R11-4
48 X 30
- ⑥  DETOUR ↑
M4-9S
30 x 24
- ⑦  DETOUR ←
M4-9L
30 x 24
- ⑦A  DETOUR ←
M4-9LA
30 x 24
- ⑧  DETOUR →
M4-9R
30 x 24
- ⑧A  DETOUR →
M4-9RA
30 x 24
- ⑨  NORTH
EdgeLawn Dr
M3-1P(O)
24 x 12
- ⑩  SOUTH
EdgeLawn Dr
M3-3P(O)
24 x 12
- ⑪  ROAD CLOSED
R11-2-4830
48 x 30
- ⑫  Edgelawn Drive CLOSED AT BNSF Railroad ON/AFTER [DATE]
SIGN SHALL HAVE AN ORANGE BACKGROUND WITH BLACK TEXT, AT LEAST 6" UPPERCASE AND 4.5" LOWERCASE.



USER NAME = mzhao	DESIGNED -	REVISED -
DRAWN -	REVISIED -	
PLOT SCALE = 1000.0000' / in.	CHECKED -	REVISED -
PLOT DATE = 3/30/2026	DATE - 3/30/2026	FILE - 201383_SHT-Detour_01.dgn

STATE OF ILLINOIS
DEPARTMENT OF TRANSPORTATION

DETOUR PLAN

SCALE: N.T.S. SHEET 1 OF 2 SHEETS STA. TO STA.

F.A. RTE.	SECTION	COUNTY	TOTAL SHEETS	SHEET NO.
2504	20-00335-00-FL	KANE	25	12
CONTRACT NO. 61M11				
ILLINOIS FED. AID PROJECT UNJAI541				

DETOUR GENERAL NOTES

1. THE CONTRACTOR SHALL SUBMIT A PREPLANNED SEQUENCE OF WORK AT THE PRECONSTRUCTION MEETING FOR REVIEW AND APPROVAL. WORK SHALL BE SCHEDULED TO MINIMIZE INCONVENIENCE TO RESIDENTS AND BUSINESSES AND TO MAINTAIN REASONABLE LEVEL OF CONSTRUCTION EFFICIENCY. THE CITY AND/OR ENGINEER RESERVE THE RIGHT TO RESTRICT WORK ON ANY ROADWAY SEGMENT IF CONSTRUCTION OPERATIONS ON A PREVIOUS SEGMENT ARE UNACCEPTABLE; TRAFFIC CONTROL OPERATIONS BECOME UNACCEPTABLE; OR ANY EROSION CONTROL DEFICIENCY EXISTS.
2. THE CONTRACTOR WILL BE REQUIRED TO ATTEND WEEKLY PROGRESS MEETINGS WITH THE CITY AND ENGINEER TO PROVIDE WEEKLY UPDATES ON THE PROPOSED WORK SCHEDULE AND UPCOMING SEQUENCE OF CONSTRUCTION ACTIVITIES. THE WORK SCHEDULE AND SEQUENCE OF WORK WILL REQUIRE APPROVAL OF THE CITY AND COORDINATION WITH IMPACTED PROPERTY OWNERS AND TENANTS.
3. ALL FLAGGERS REQUIRED FOR MAINTENANCE OF TRAFFIC INCLUDING ANY FLAGGERS NEEDED TO MAINTAIN TRAFFIC FOR SIDE STREETS AND DRIVEWAYS, SHALL BE INCLUDED IN THE COST OF TRAFFIC CONTROL AND PROTECTION.
4. THE ENGINEER SHALL BE NOTIFIED OF ANY CHANGES TO CONSTRUCTION STAGING. ALL CHANGES TO CONSTRUCTION STAGING MUST BE APPROVED BY THE ENGINEER PRIOR TO IMPLEMENTATION.
5. THE CONTRACTOR SHALL PROVIDE TEMPORARY ACCESS TO DRIVEWAYS AND SIDE STREETS DURING CONSTRUCTION.
6. CONSTRUCTION OPERATIONS INVOLVING THE TEMPORARY CLOSING OF DRIVEWAYS SHALL NOT COMMENCE WITHOUT THE CONTRACTOR NOTIFYING THE CITY AT LEAST THREE DAYS PRIOR. THE CONTRACTOR WILL ALSO BE REQUIRED TO PROVIDE 48-HOUR NOTICE TO AFFECTED PARTIES BY DISTRIBUTING NOTICES AND/OR POSTING SIGNS.
7. ALL TRENCHES, HOLES, AND PITS SHALL BE FILLED OR COVERED WITH STEEL PLATES EXCEPT DURING ACTUAL CONSTRUCTION THE CONTRACTOR IS IN. THE CONTRACTOR SHALL FILL OR USE STEEL PLATES TO COVER TRENCHES, HOLES AND PITS AT THE END OF EACH WORK DAY TO OPEN THE ROADWAY TO TRAFFIC. THIS WORK SHALL BE INCLUDED IN THE COST OF THE ITEMS FOR WHICH IT APPLIES.
8. EXISTING TRAFFIC CONTROL DEVICES WITHIN THE LIMITS OF CONSTRUCTION ARE TO BE PROTECTED FROM DAMAGE BY THE CONTRACTOR. ANY DAMAGE SIGNS CAUSED BY HIS WORK SHALL BE REPLACED BY THE CONTRACTOR.
9. TYPE I, TYPE II, OR DRUM BARRICADES WITH TWO-WAY FLASHING LIGHTS SHALL BE REQUIRED AT ALL OPEN TRENCHES, EXCAVATIONS, OPEN OR EXPOSED SEWER STRUCTURES, TRANSVERSE PAYMENT JOINT, MATERIALS OR EQUIPMENT WITHIN THE RIGHT-OF-WAY (NUMBER AND SPACING DEPENDS ON THE CONDITIONS); AND AT LOCATIONS DESIGNATED BY THE ENGINEER OR LOCAL LAW ENFORCEMENT AGENCIES.
10. THE FURNISHING, INSTALLING, AND RELOCATION OF ALL TRAFFIC SIGNS SHALL BE INCLUDED IN THE COST OF TRAFFIC CONTROL AND PROTECTION. ALL CONFLICTING TRAFFIC SIGNS SHALL BE COVERED AS DETERMINED BY THE ENGINEER AND INCLUDED IN THE COST OF TRAFFIC CONTROL AND PROTECTION).
11. ALL ITEMS SHALL CONFORM TO THE MANUAL ON UNIFORM TRAFFIC CONTROL DEVICES (MUTCD) AND APPLICABLE HIGHWAY STANDARDS.
12. CONTRACTOR TO ENSURE PROPER MAINTENANCE OF ALL BARRICADES AND SIGNAGE ON WEEKENDS AND HOLIDAYS.
13. TRAFFIC CONDITIONS, CRASHES, AND OTHER UNFORSEEN EMERGENCY CONDITIONS MAY REQUIRE THE ENGINEER TO RESTRICT, MODIFY, OR REMOVE LANE CLOSURES OR CHANNELIZATION DESCRIBED IN THE PLANS. THE CONTRACTOR SHALL MAKE THE NECESSARY ADJUSTMENTS AS DETERMINED BY THE ENGINEER WITHOUT DELAY. THE CONTRACTOR SHALL RESPOND TO ANY REQUEST MADE BY THE ENGINEER FOR CORRECTION WITHIN TWO HOURS FROM THE TIME OF NOTIFICATION.
14. ACCESS FOR EMERGENCY VEHICLES SHALL BE MAINTAINED AT ALL TIMES.
15. THE CONTRACTOR SHALL REMOVE OR COVER ALL WORKERS (W21-1(0)) OR FLAGGER (W20-7(0)) SIGNS WHEN WORKERS OR FLAGGERS ARE NOT PRESENT FOR MORE THAN AN HOUR.
16. THE COST OF ADDITIONAL DEPLOYMENTS, SETUPS AND/OR MOBILIZATIONS NEEDED FOR STAGED CONSTRUCTION SHALL BE INCLUDED IN THE COST OF TRAFFIC CONTROL AND PROTECTION, AND NO ADDITIONAL COMPENSATION WILL BE ALLOWED.
17. THE CITY OF AURORA CODE RESTRICTS CONSTRUCTION TO THE HOURS OF 6:00 A.M. AND 9:00 P.M., MONDAY THROUGH FRIDAY, AND 8:00 AM TO 6:00 P.M. ON SATURDAY. NO EQUIPMENT MAY BE STARTED ON ANY PART OF THE PROJECT PRIOR TO 6:00 A.M. VIOLATIONS OF THIS CODE ARE SUBJECT TO POLICE ENFORCEMENT AND SUBSEQUENT FINES AS OUTLINED IN THE CODE.
18. THE CONTRACTOR SHALL COORDINATE FLAGGING ACTIVITIES WITH AT&T TO ALLOW AT&T WORK TO BE COMPLETED WITH PROPOSED EDGELAWN DRIVE CONSTRUCTION. AT&T SHALL BE CONTACTED THREE WEEKS AHEAD OF FLAGGING ACTIVITIES.

SEQUENCE OF CONSTRUCTION

- PRE-STAGE
1. ESTABLISH S. EDGELAWN DRIVE STAGE 1 TRAFFIC CONTROL ITEMS, INCLUDING DETOUR SIGNAGE AS SHOWN ON DETOUR PLAN. CLOSE S. EDGELAWN DRIVE TO THROUGH TRAFFIC BETWEEN KINGSWAY DRIVE AND JERICHO ROAD AND PROVIDE A DETOUR AS SHOWN IN DETOUR PLAN. THE CONTRACTOR SHALL PROVIDE ACCESS FOR EMERGENCY VEHICLES AT ALL TIMES AND FOR GARBAGE TRUCKS AND FOOD DELIVERIES DURING THE DAY.
 2. ESTABLISH EROSION CONTROL MEASURES AND TREE PROTECTION.
- STAGE 1 RAILROAD CONCRETE PAD EXTENSION (TO BE COMPLETED BY OTHERS)
1. MAINTAIN DETOUR SIGNAGE AS SHOWN ON DETOUR PLAN.
 2. RAILROAD TO REMOVE AND REPLACE PUBLIC CROSSING AND OTHER MISCELLANEOUS ITEMS OF WORK NECESSARY TO INSTALL CONCRETE PAD EXTENSION.
- STAGE 2 S. EDGELAWN DRIVE ROADWAY WORK
1. MAINTAIN DETOUR SIGNAGE AS SHOWN ON DETOUR PLAN.
 2. REMOVE ASPHALT PAVEMENT, SAWCUT ASPHALT AND REMOVE AGGREGATE AND TEMPORARY MATERIALS TO THE PROPOSED SUBBASE ELEVATION FOR NEW CONCRETE MEDIAN INSTALLATION.
 3. INSTALL NEW CONCRETE MEDIAN.
 4. PREPARE SUBBASE FOR ASPHALT PAVING.
 5. INSTALL SURFACE COURSE.
 6. COMPLETE UTILITY RELOCATIONS.
- STAGE 3 BIKE PATH INSTALLATION
1. REMOVE TRAFFIC CONTROL ITEMS AND OPEN S. EDGELAWN DRIVE TO TRAFFIC. NORTHBOUND AND SOUTHBOUND TRAFFIC ON S. EDGELAWN DRIVE SHALL BE MAINTAINED AT ALL TIMES.
 2. ACCESS TO THE ADJACENT PARKING LOTS ON THE SOUTH AND NORTH SIDES OF THE RAILROAD SHALL BE MAINTAINED AT ALL TIMES. PROVIDE OFF ROAD TRAFFIC CONTROL AS DESCRIBED IN SPECIAL PROVISIONS AND STANDARD DETAILS.
 3. REMOVE TEMPORARY STONE, EARTH, AND/OR ASPHALT TO THE BIKE PATH SUBBASE DEPTH.
 4. REMOVE EXISTING ELEMENTS INCLUDING CURB AND GUTTER AND PAVEMENT AS SHOWN IN PLANS.
 5. INSTALL BIKE PATH ELEMENTS.
- STAGE 4 RAILROAD PEDESTRIAN GATE INSTALLATION (TO BE COMPLETED BY OTHERS)
1. MAINTAIN STAGE 3 TRAFFIC CONTROL.
 2. ACCESS TO THE ADJACENT PARKING LOTS ON THE SOUTH AND NORTH SIDES OF THE RAILROAD SHALL BE MAINTAINED AT ALL TIMES.
 3. INSTALL FOUNDATIONS, CABLING, GATE ARMS, AND OTHER MISCELLANEOUS ITEMS OF WORK NECESSARY TO INSTALL RAILROAD PEDESTRIAN GATES. PROVIDE TRAFFIC CONTROL.
- POST STAGE WORK
1. INSTALL PAVEMENT MARKINGS.
 2. COMPLETE PARKWAY RESTORATION.
 3. COMPLETE PUNCH LIST ITEMS.
 4. REMOVE TEMPORARY EROSION CONTROL ONCE SEED ESTABLISHES.
 5. REMOVE REMAINING TRAFFIC CONTROL ITEMS.

STATE OF ILLINOIS - PROFESSIONAL DESIGN FIRM
 LICENSE NO. - 184-0011211 - EXPIRES 4/30/2025
 mzhao 3/30/2026 7:51:11 AM
 FILE: \\mzhao\p\201383-5-Edgelawn.Dwg at\CAD\Sheets\201383_SHT-DeTour_Notes.dgn

	USER NAME = mzhao	DESIGNED -	REVISED -
	PLOT SCALE = 40,0000 ' / in.	DRAWN -	REVISED -
	PLOT DATE = 3/30/2026	CHECKED -	REVISED -
		DATE - 3/30/2026	FILE - 201383_SHT-DeTour_Notes.dgn

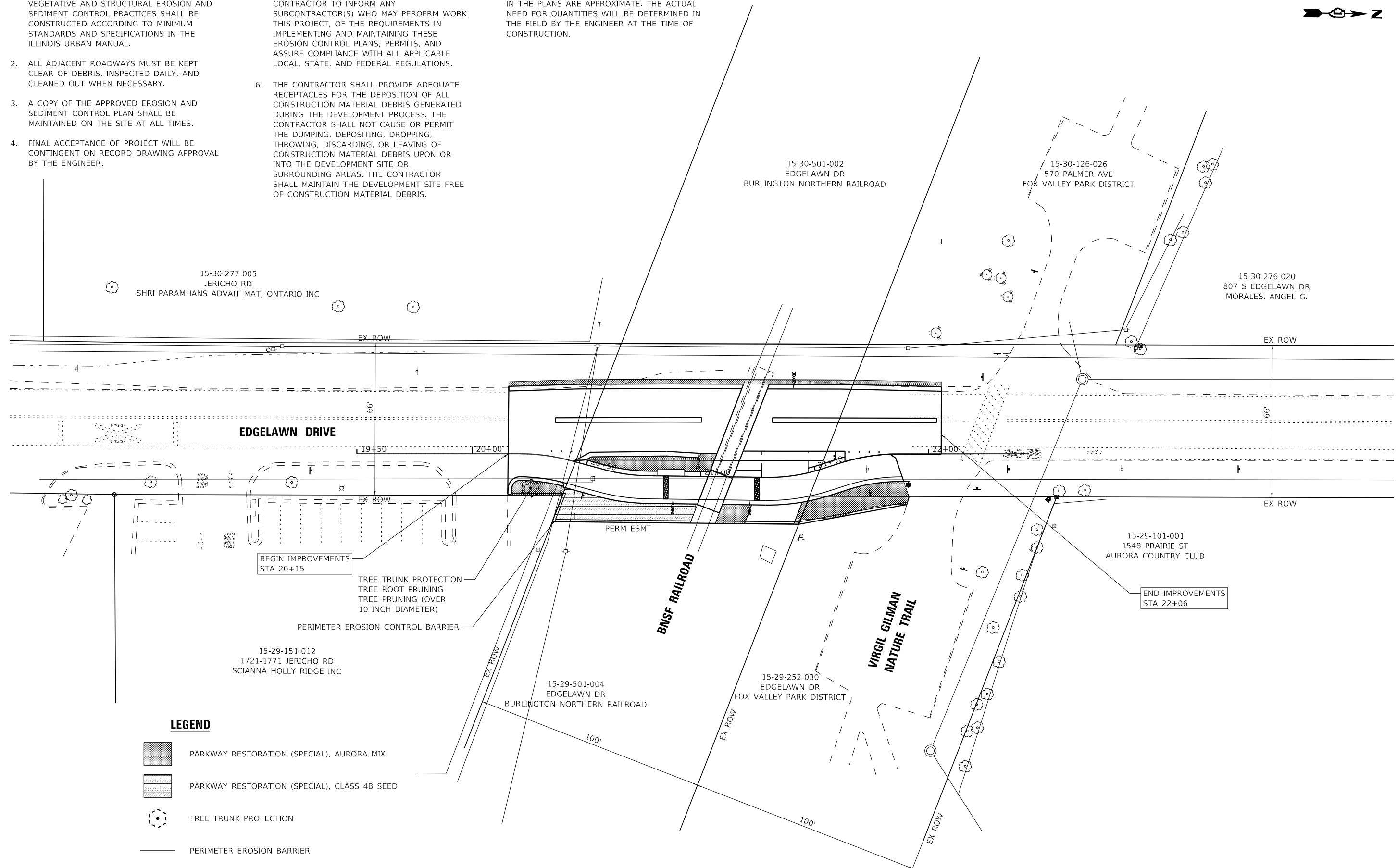
STATE OF ILLINOIS
 DEPARTMENT OF TRANSPORTATION

DETOUR NOTES			
SCALE: N.T.S.	SHEET 1	OF 1 SHEETS	STA. TO STA.

F.A. RTE.	SECTION	COUNTY	TOTAL SHEETS	SHEET NO.
2504	20-00335-00-FL	KANE	25	13
CONTRACT NO. 61M11				
ILLINOIS FED. AID PROJECT UNJAI541				

EROSION CONTROL NOTES

- UNLESS OTHERWISE INDICATED, ALL VEGETATIVE AND STRUCTURAL EROSION AND SEDIMENT CONTROL PRACTICES SHALL BE CONSTRUCTED ACCORDING TO MINIMUM STANDARDS AND SPECIFICATIONS IN THE ILLINOIS URBAN MANUAL.
- ALL ADJACENT ROADWAYS MUST BE KEPT CLEAR OF DEBRIS, INSPECTED DAILY, AND CLEANED OUT WHEN NECESSARY.
- A COPY OF THE APPROVED EROSION AND SEDIMENT CONTROL PLAN SHALL BE MAINTAINED ON THE SITE AT ALL TIMES.
- FINAL ACCEPTANCE OF PROJECT WILL BE CONTINGENT ON RECORD DRAWING APPROVAL BY THE ENGINEER.
- IT IS THE RESPONSIBILITY OF THE GENERAL CONTRACTOR TO INFORM ANY SUBCONTRACTOR(S) WHO MAY PERFORM WORK THIS PROJECT, OF THE REQUIREMENTS IN IMPLEMENTING AND MAINTAINING THESE EROSION CONTROL PLANS, PERMITS, AND ASSURE COMPLIANCE WITH ALL APPLICABLE LOCAL, STATE, AND FEDERAL REGULATIONS.
- THE CONTRACTOR SHALL PROVIDE ADEQUATE RECEPTACLES FOR THE DEPOSITION OF ALL CONSTRUCTION MATERIAL DEBRIS GENERATED DURING THE DEVELOPMENT PROCESS. THE CONTRACTOR SHALL NOT CAUSE OR PERMIT THE DUMPING, DEPOSITING, DROPPING, THROWING, DISCARDING, OR LEAVING OF CONSTRUCTION MATERIAL DEBRIS UPON OR INTO THE DEVELOPMENT SITE OR SURROUNDING AREAS. THE CONTRACTOR SHALL MAINTAIN THE DEVELOPMENT SITE FREE OF CONSTRUCTION MATERIAL DEBRIS.
- THE EROSION CONTROL QUANTITIES PROVIDED IN THE PLANS ARE APPROXIMATE. THE ACTUAL NEED FOR QUANTITIES WILL BE DETERMINED IN THE FIELD BY THE ENGINEER AT THE TIME OF CONSTRUCTION.



LEGEND

- PARKWAY RESTORATION (SPECIAL), AURORA MIX
- PARKWAY RESTORATION (SPECIAL), CLASS 4B SEED
- TREE TRUNK PROTECTION
- PERIMETER EROSION BARRIER

STATE OF ILLINOIS - PROFESSIONAL DESIGN FIRM
 LICENSE NO. - 184-001121 - EXPIRES 4/30/2025
 mzhao 3/30/2026 7:51:12 AM
 FILE: \\mzhao\p\201383-5-Edgelawn Drive - at\CAD\Sheets\201383_SHT-Landscape_01.dgn



USER NAME = mzhao	DESIGNED -	REVISED -
	DRAWN -	REVISED -
PLOT SCALE = 40,0000' / in.	CHECKED -	REVISED -
PLOT DATE = 3/30/2026	DATE - 3/30/2026	FILE - 201383_SHT-Landscape_01.dgn

STATE OF ILLINOIS
DEPARTMENT OF TRANSPORTATION

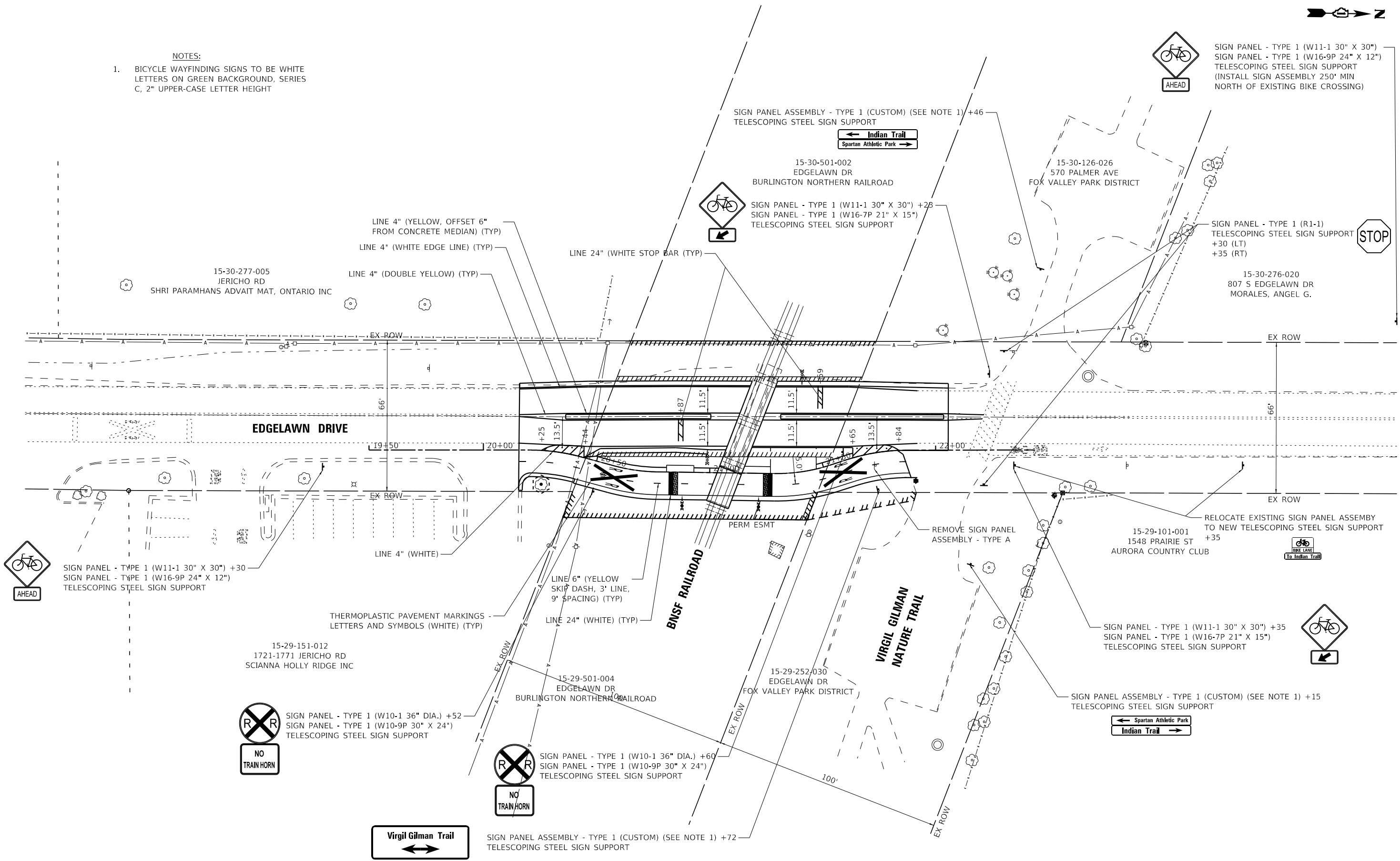
EROSION CONTROL AND LANDSCAPING PLAN

SCALE: 1" = 20' SHEET 1 OF 1 SHEETS STA. TO STA.

F.A. RTE.	SECTION	COUNTY	TOTAL SHEETS	SHEET NO.
2504	20-00335-00-FL	KANE	25	14
CONTRACT NO. 61M11				
ILLINOIS FED. AID PROJECT UNJAI(541)				



- NOTES:
- BICYCLE WAYFINDING SIGNS TO BE WHITE LETTERS ON GREEN BACKGROUND, SERIES C, 2" UPPER-CASE LETTER HEIGHT



STATE OF ILLINOIS - PROFESSIONAL DESIGN FIRM
 LICENSE NO. - 184-001121 - EXPIRES 4/30/2025
 mzhao 3/30/2026 7:51:13 AM
 FILE NAME: P:\ARORC\201383-5-Edgelawn Drive - at\CAD\Sheets\201383_SHT-PM_01.dgn
 ...:\Pic\dry\pdf\BW_Default.rtf
 ...:\CAD\Plot\201383_Phase1.tbl
 P:\ARORC\201383-5-Edgelawn Drive - at\CAD\Sheets\201383_SHT-PM_01.dgn



USER NAME = mzhao	DESIGNED -	REVISED -
PLOT SCALE = 40,0000' / in.	DRAWN -	REVISED -
PLOT DATE = 3/30/2026	CHECKED -	REVISED -
DATE - 3/30/2026	FILE - 201383_SHT-PM_01.dgn	

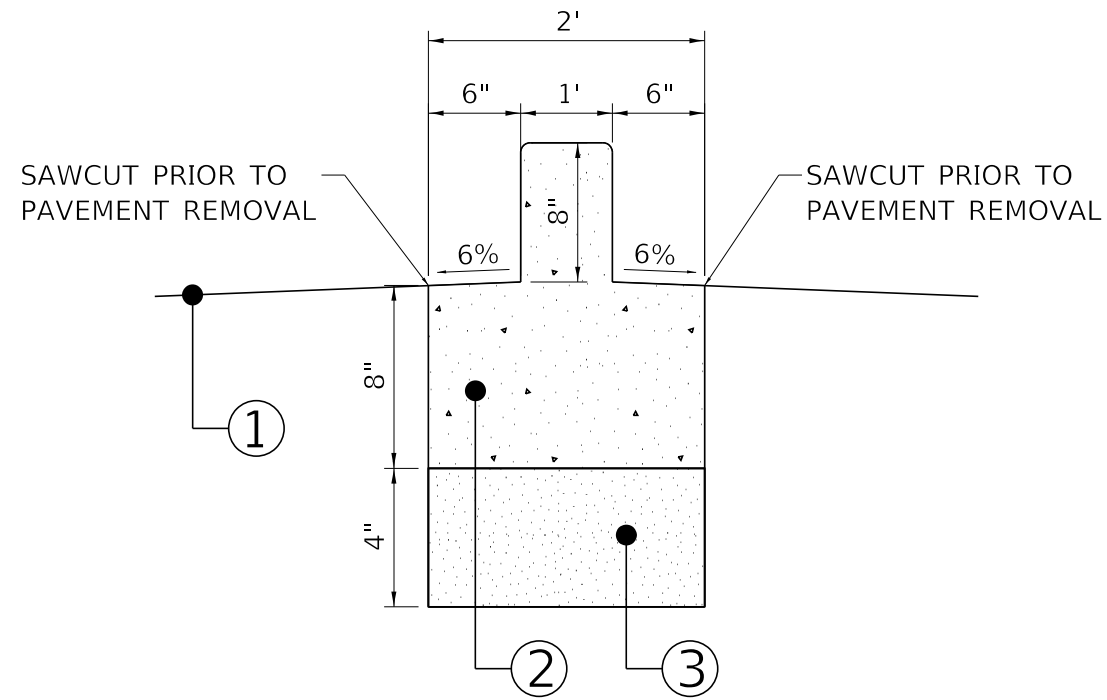
STATE OF ILLINOIS
DEPARTMENT OF TRANSPORTATION

PAVEMENT MARKING AND SIGNING PLAN

SCALE: 1" = 20' SHEET 1 OF 1 SHEETS STA. TO STA.

F.A. RTE.	SECTION	COUNTY	TOTAL SHEETS	SHEET NO.
2504	20-00335-00-FL	KANE	25	15
CONTRACT NO. 61M11				
ILLINOIS FED. AID PROJECT UNJAI541				

STATE OF ILLINOIS - PROFESSIONAL DESIGN FIRM
 LICENSE NO. - 184-001121 - EXPIRES 4/30/2025
 mzhao 3/30/2026 7:51:14 AM
 ...\\pltdrv\pdf\BW_Default.rtf
 ...\\CAD\Plot\201383_Phase1.tbl
 P:\ARORC\201383-5_Edgelawn Drive at\CAD\Sheets\201383_SHT-MiscDetails.dgn
 FILE NAME: P:\ARORC\201383-5_Edgelawn Drive at\CAD\Sheets\201383_SHT-MiscDetails.dgn



- ① EXISTING PAVEMENT
- ② BARRIER MEDIAN
- ③ SUBBASE GRANULAR MATERIAL (4") CRUSHED CA-6

CONCRETE MEDIAN (SPECIAL)



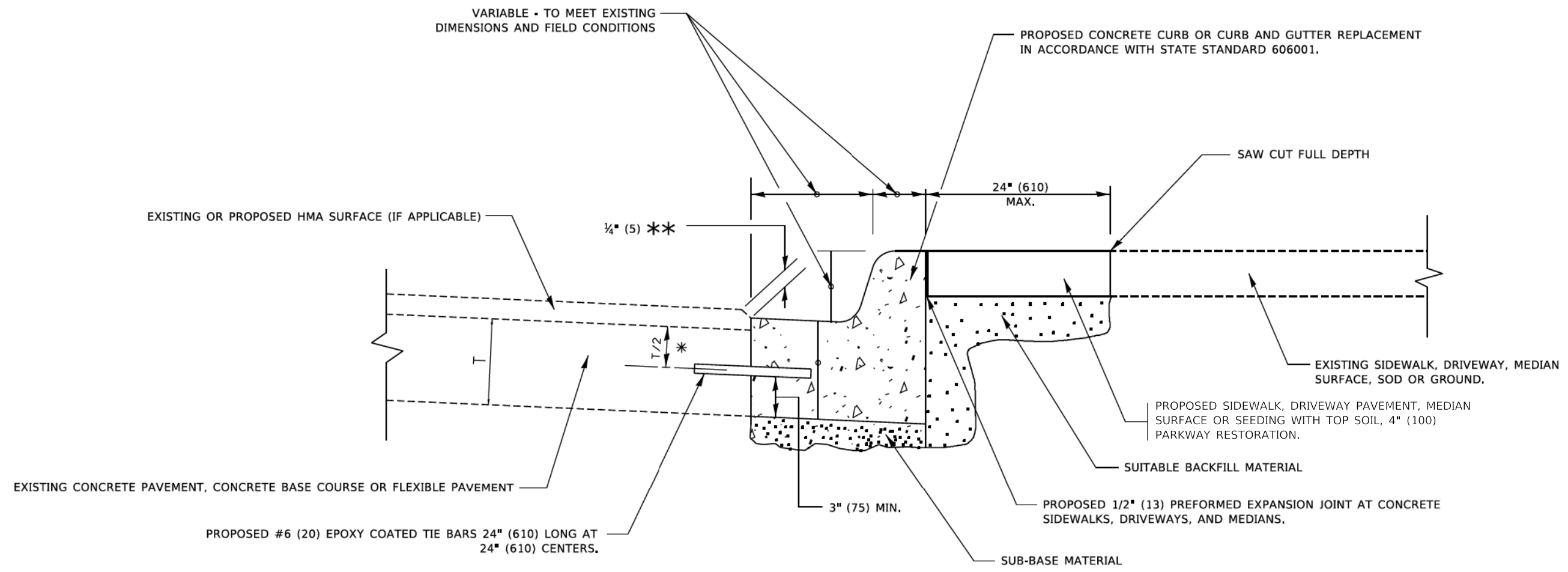
USER NAME = mzhao	DESIGNED -	REVISED -
PLOT SCALE = 40.0000' / in.	DRAWN -	REVISED -
PLOT DATE = 3/30/2026	CHECKED -	REVISED -
	DATE - 3/30/2026	FILE - 201383_SHT-MiscDetails.dgn

STATE OF ILLINOIS
 DEPARTMENT OF TRANSPORTATION

MISCELLANEOUS DETAILS

SCALE: N.T.S. SHEET 1 OF 1 SHEETS STA. TO STA.

F.A. RTE.	SECTION	COUNTY	TOTAL SHEETS	SHEET NO.
2504	20-00335-00-FL	KANE	25	16
CONTRACT NO. 61M11				
ILLINOIS FED. AID PROJECT UNJAI541				



- * 3" (75) MINIMUM FROM TOP AND BOTTOM OF THE CONCRETE PAVEMENT OR BASE COURSE.
- ** IF THE FINAL SURFACE OF THE PAVEMENT IS CONCRETE, THE GUTTER IS TO BE FLUSH WITH THE PAVEMENT.

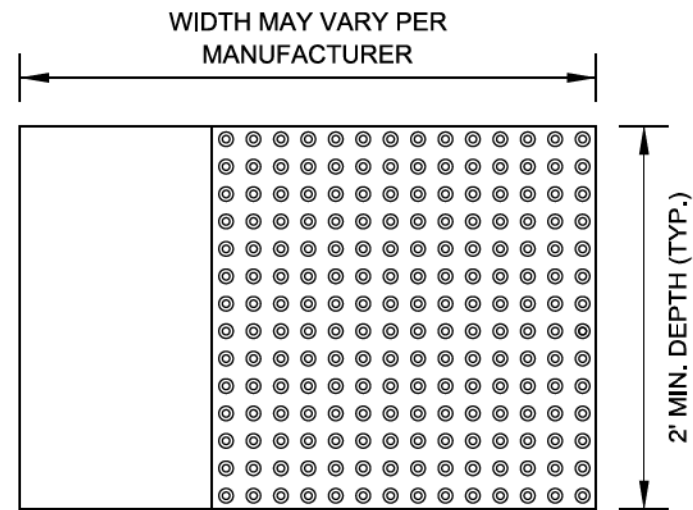
CURB OR CURB AND GUTTER REMOVAL AND REPLACEMENT

ALL DIMENSIONS ARE IN INCHES (MILLIMETERS) UNLESS OTHERWISE SHOWN.

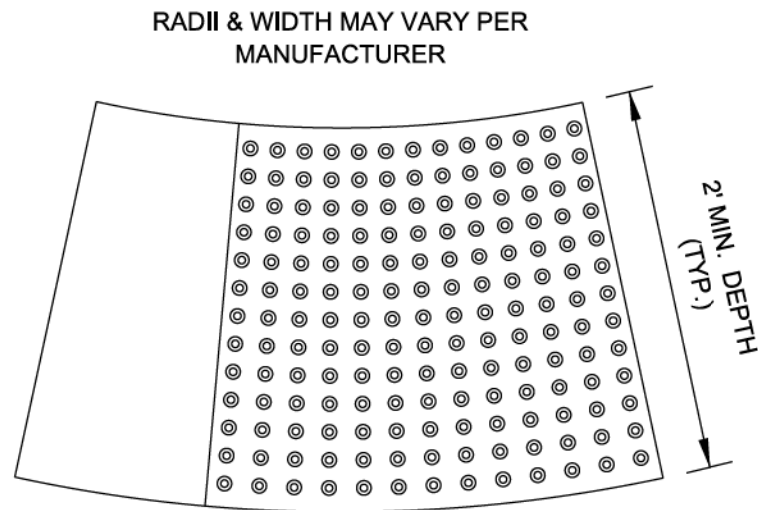
USER NAME - footem PLOT SCALE - 50,0000 1 / in. PLOT DATE - 7/11/2019	DESIGNED - A. HOUSEH DRAWN - CHECKED - DATE - 03-11-94	REVISED - A. ABBAS 03-21-97 REVISED - M. GOMEZ 01-22-01 REVISED - R. BORO 12-15-09 REVISED - K. SMITH 07-11-19	STATE OF ILLINOIS DEPARTMENT OF TRANSPORTATION	CURB OR CURB AND GUTTER REMOVAL AND REPLACEMENT	SCALE: NONE	SHEET 1 OF 1 SHEETS	STA. TO STA.	F.A. RTE. 2504	SECTION 20-00335-00-FL	COUNTY KANE	TOTAL SHEETS 25	SHEET NO. 17
BD600-06 (BD-24)								CONTRACT NO. 61M11				
ILLINOIS FED. AID PROJECT UNJ1541												

MODEL: Default
 FILE NAME: p:\projects\p1\DOT\Documents\DOT - Offices\butte1 - 1\Projects\BD600-06\BD600-06\Drawings\BD600-06.dgn

STRAIGHT DETECTABLE WARNING UNITS



RADIAL DETECTABLE WARNING UNITS

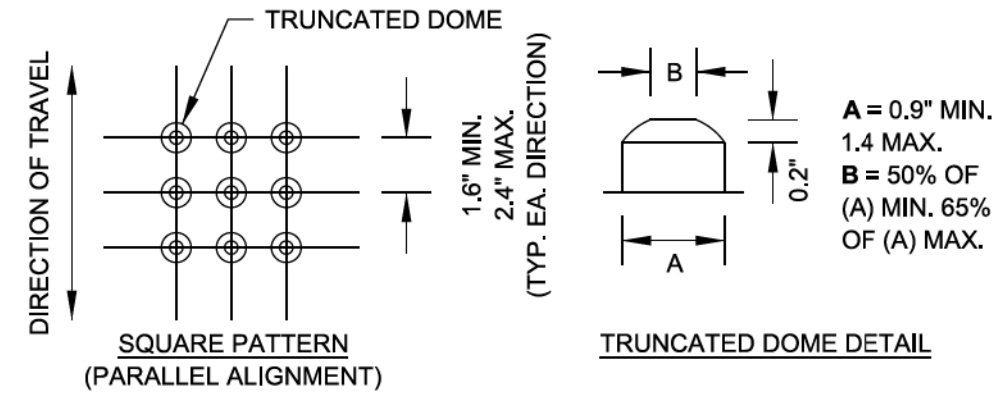


DETECTABLE WARNING UNIT SIZES

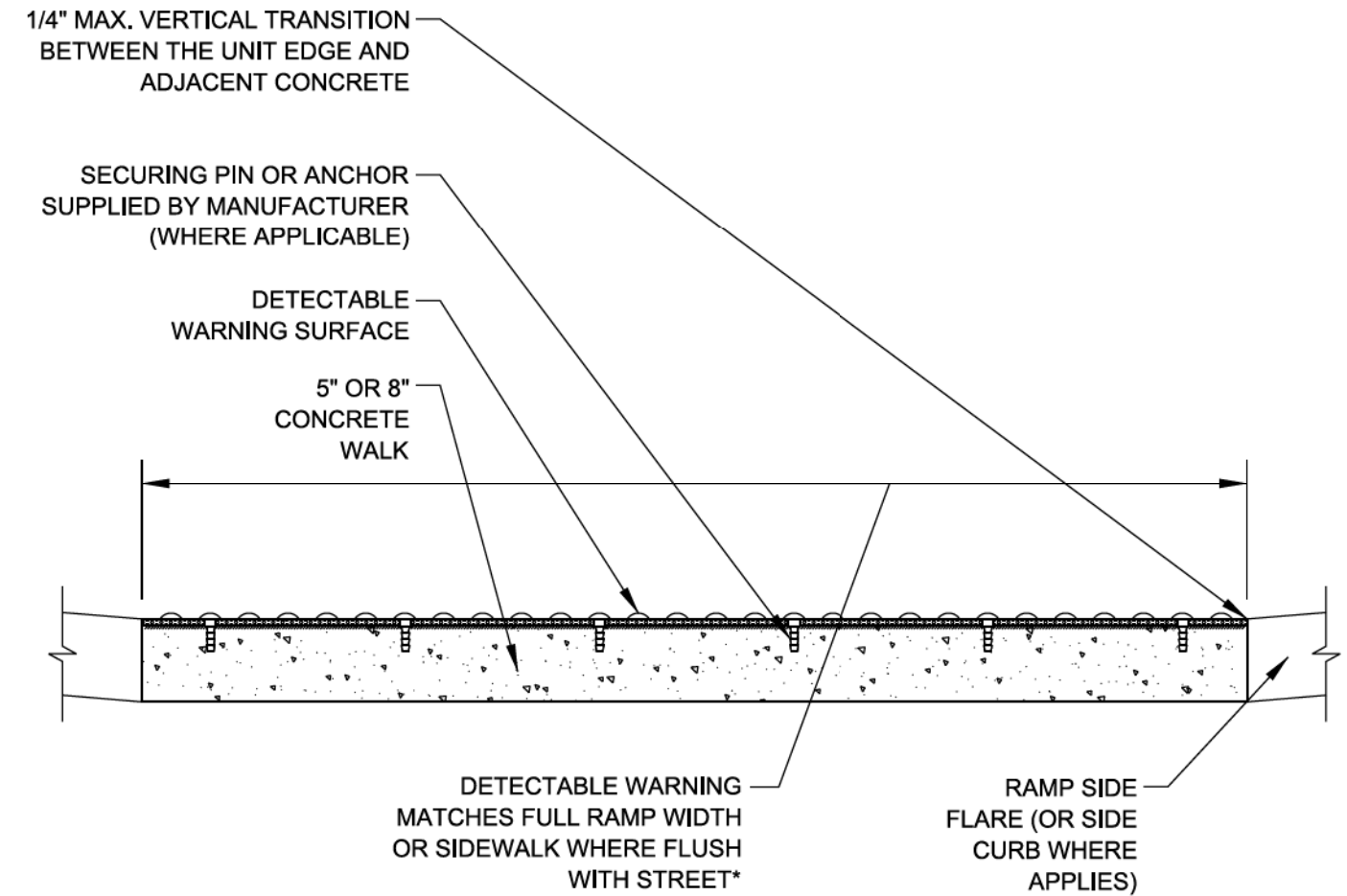
- VERIFY ALL DIMENSIONS WITH THE PRODUCT MANUFACTURER.
- IF USING RADIAL UNITS, VERIFY THAT THE CURB RADIUS MATCHES AVAILABLE UNIT RADII WITH THE PRODUCT MANUFACTURER.

GENERAL NOTE:

THE ROWS OF DOMES IN THE DETECTABLE WARNING MATERIAL MUST BE ALIGNED WITH THE PATH OF WHEELCHAIR TRAVEL WHICH IS REQUIRED TO BE PERPENDICULAR TO THE GRADE BREAK AT THE BOTTOM OF THE RAMP TO PERMIT TRACKING BETWEEN DOME ROWS. ON BLENDED TRANSITIONS OR FLUSH TRANSITIONS, WHERE RADIAL UNITS ARE SITUATED ABOUT THE CURB RADIUS, DOME ORIENTATION IS NOT SIGNIFICANT.



UNIT PATTERN & DOME DETAIL



*A BORDER OF 2 INCHES OR LESS AROUND THE DETECTABLE WARNING SURFACE IS ACCEPTABLE IF REQUIRED FOR PROPER INSTALLATION OF THE DETECTABLE WARNING SURFACE PRODUCT

DETECTABLE WARNING UNIT SECTION

MODEL: Default
FILE NAME: p:\projects\w\DOT\Documents\DOT_offices\ub\file_1\Projects\ub\5272321\CADD\ra1\CAD\sheet\5255.dgn

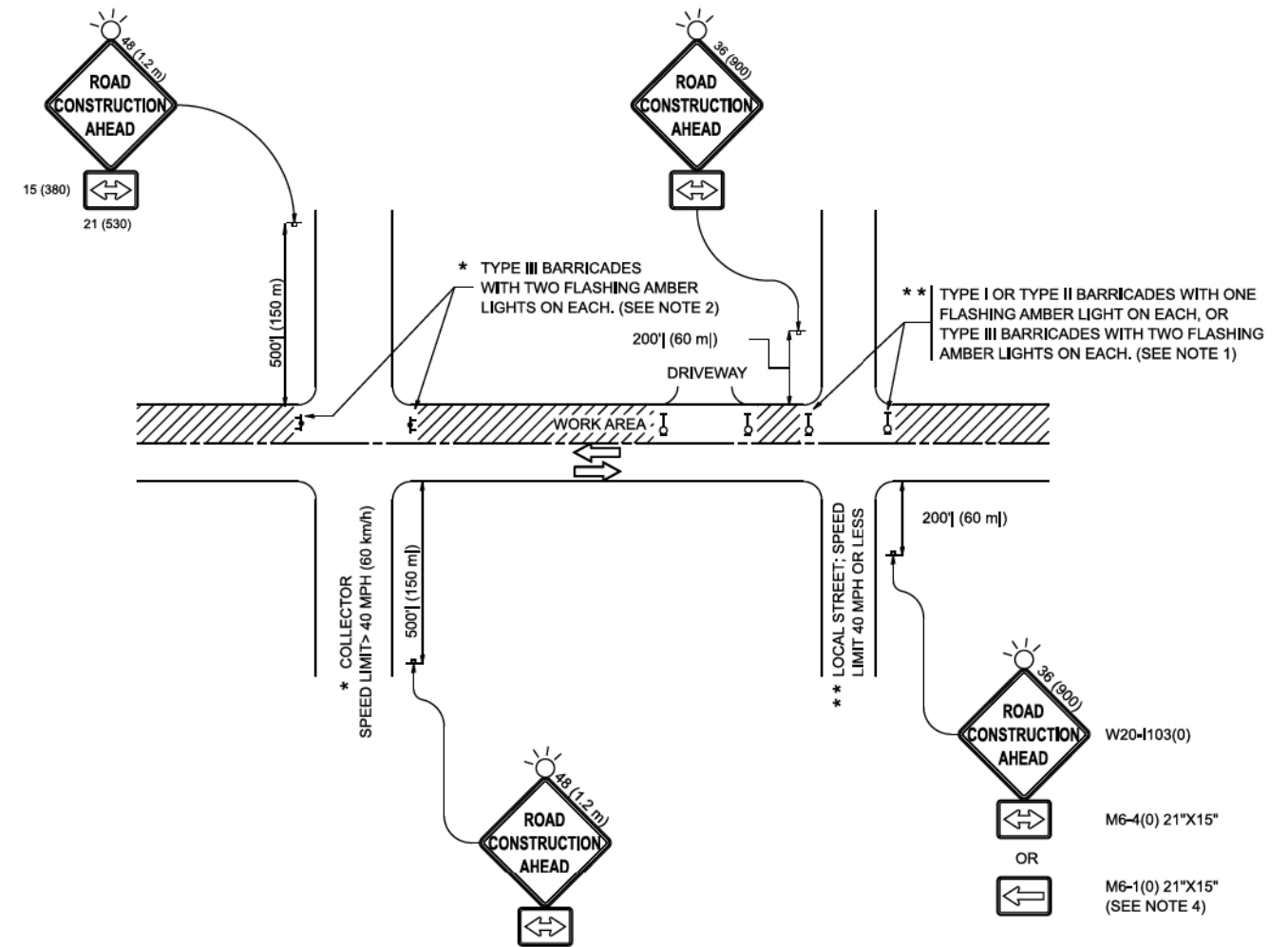
USER NAME	footemj	DESIGNED -	REVISED -
		DRAWN -	REVISED -
PLOT SCALE	50,0000' / 1"	CHECKED -	REVISED -
PLOT DATE	10/8/2019	DATE -	06-20-2017
		REVISED -	

STATE OF ILLINOIS
DEPARTMENT OF TRANSPORTATION

CITY OF CHICAGO
DETECTABLE WARNINGS

SCALE: NONE SHEET 1 OF 1 SHEETS STA. TO STA.

F.A. RTE.	SECTION	COUNTY	TOTAL SHEETS	SHEET NO.
2504	20-00335-00-FL	KANE	25	19
BD 58		CONTRACT NO. 61M11		
ILLINOIS FED. AID PROJECT UNJ1541				



NOTES:

1. SIDE ROAD WITH A SPEED LIMIT OF 40 MPH (60 km/h) OR LESS AS SHOWN ON THE DRAWING AND AS DIRECTED BY THE ENGINEER:
 - a) ONE "ROAD CONSTRUCTION AHEAD" SIGN 36 x 36 (900x900) WITH A FLASHER MOUNTED ON IT APPROXIMATELY 200' (60 m) IN ADVANCE OF THE MAIN ROUTE.
 - b) THE CLOSED PORTION OF THE MAIN ROUTE SHALL BE PROTECTED BY BLOCKING WITH TYPE I, TYPE II OR TYPE III BARRICADES, 1/3 OF THE CROSS SECTION OF THE CLOSED PORTION.
2. SIDE ROAD WITH A SPEED LIMIT GREATER THAN 40 MPH (60 km/h) AS SHOWN ON THE DRAWING AND AS DIRECTED BY THE ENGINEER:
 - a) ONE "ROAD CONSTRUCTION AHEAD" SIGN 48 x 48 (1.2 m x 1.2 m) WITH A FLASHER MOUNTED ON IT APPROXIMATELY 500' (150 m) IN ADVANCE OF THE MAIN ROUTE.
 - b) THE CLOSED PORTION OF THE MAIN ROUTE SHALL BE PROTECTED BY BLOCKING WITH TYPE III BARRICADES, 1/2 OF THE CROSS SECTION OF THE CLOSED PORTION.
3. CONES MAY BE SUBSTITUTED FOR BARRICADES OR DRUMS AT HALF THE SPACING DURING DAY OPERATIONS. CONES SHALL BE A MINIMUM OF 28 (710) IN HEIGHT.
4. WHEN THE SIDE ROAD LIES BETWEEN THE BEGINNING OF THE MAINLINE SIGNING AND THE WORK ZONE, A SINGLE HEADED ARROW (M6-1) SHALL BE USED IN LIEU OF THE DOUBLE HEADED ARROW (M6-4).
5. WHEN WORK IS BEING PERFORMED ON A SIDE ROAD OR DRIVEWAY, FOLLOW THE APPLICABLE STANDARD(S), THE DIRECTIONAL ARROW (M6-1 OR M6-4) SHALL BE COVERED OR REMOVED WHEN NO LONGER CONSISTENT WITH THE TRAFFIC CONTROL SET-UP.
6. ADVANCE WARNING SIGNS ARE TO BE OMITTED ON DRIVEWAYS UNLESS OTHERWISE SPECIFIED IN THE PLANS OR BY THE ENGINEER.
7. THE TRAFFIC CONTROL AND PROTECTION FOR SIDE ROADS, INTERSECTIONS, AND DRIVEWAYS SHALL BE INCLUDED IN THE COST OF SPECIFIED TRAFFIC CONTROL STANDARDS OR ITEMS.

All dimensions are in inches (millimeters) unless otherwise shown.

MODEL: TC-10 (Sheet)
FILE NAME: c:\p\work\pwt\lawrence.demanche\11\mod\gov\09514151\TC-10.dgn

USER NAME	■ lawrence.demanche	DESIGNED	- L.H.A.	REVISED	- T. RAMMACHER 01-06-00
		DRAWN	-	REVISED	- A. SCHUETZE 07-01-13
PLOT SCALE	= 0.08333317" / ft.	CHECKED	-	REVISED	- A. SCHUETZE 09-15-06
PLOT DATE	■ 10/2/2025	DATE	- 06-89	REVISED	- D. SENDERAK 05-03-25

**STATE OF ILLINOIS
DEPARTMENT OF TRANSPORTATION**

**TRAFFIC CONTROL AND PROTECTION FOR
SIDE ROADS, INTERSECTIONS, AND DRIVEWAYS**

SCALE: SHEET OF SHEETS STA. TO STA.

F.A.P. RTE.	SECTION	COUNTY	TOTAL SHEETS	SHEET NO.
2504	20-00335-00-FL	KANE	25	20
TC-10			CONTRACT NO. 61M11	
ILLINOIS FED. AID PROJECT UNJAI541				

MODEL: Detour.dwg
 FILE NAME: p:\proj\110818\BNDTEC\110818\proj\WIDOT\Documents\DOT_Offices\Bndt\110818\proj\WIDOT\CAD\Drawings\CAD\Sheet\TC21.dwg

ROUTE MARKERS

FOR U.S. ROUTES
M1-40-2424

FOR ILLINOIS ROUTES
M1-50-2424

R.R. UNMARKED ROUTES
SPECIAL 24" x 18" VARIABLE
4" BLACK LETTERS ON WHITE
REFLECTIVE BACKGROUND

ARROWS SIGNS

M5-1L-2115

M5-1R-2115

M6-1-2115

M6-2-2115

CARDINAL DIRECTION & DETOUR SIGNS

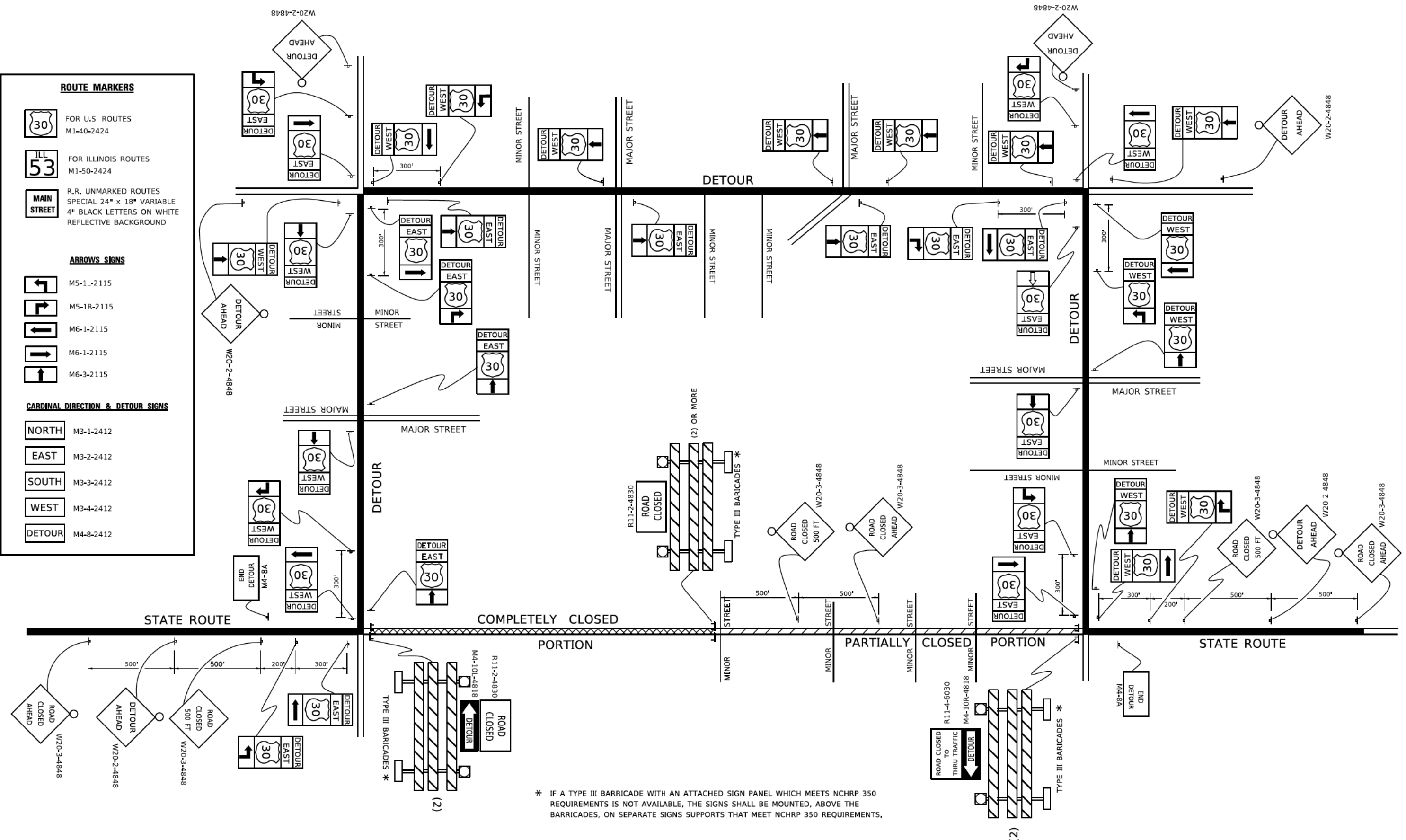
NORTH M3-1-2412

EAST M3-2-2412

SOUTH M3-3-2412

WEST M3-4-2412

DETOUR M4-8-2412



* IF A TYPE III BARRICADE WITH AN ATTACHED SIGN PANEL WHICH MEETS NCHRP 350 REQUIREMENTS IS NOT AVAILABLE, THE SIGNS SHALL BE MOUNTED, ABOVE THE BARRICADES, ON SEPARATE SIGNS SUPPORTS THAT MEET NCHRP 350 REQUIREMENTS.

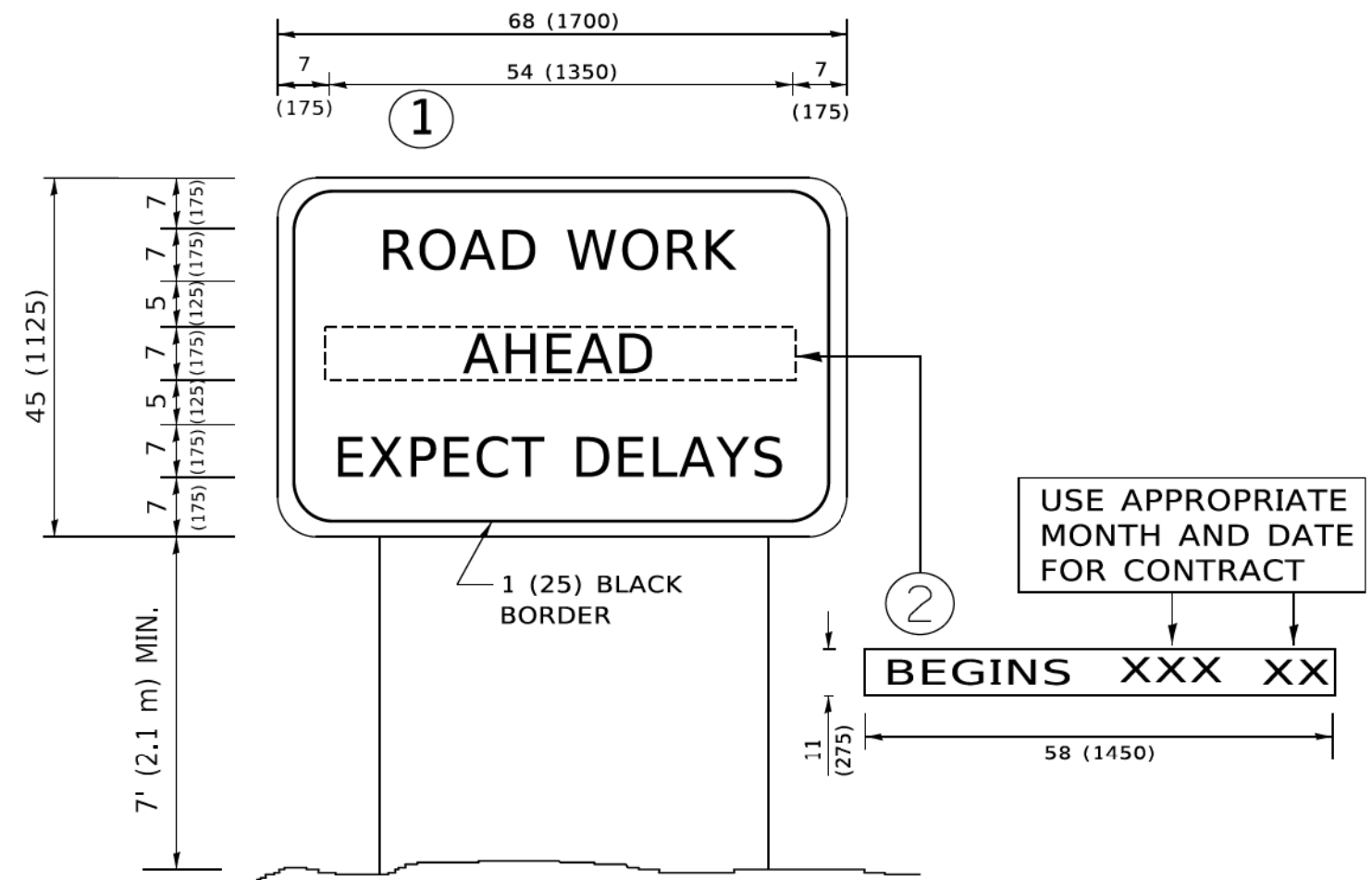
USER NAME - [footem]	DESIGNED -	REVISED - 10-18-02
	DRAWN -	REVISED - R, BORO 09-14-09
PLOT SCALE = 50,0000' / 1"	CHECKED -	REVISED -
PLOT DATE = 3/4/2019	DATE -	REVISED -

**STATE OF ILLINOIS
 DEPARTMENT OF TRANSPORTATION**

**DETOUR SIGNING
 FOR CLOSING STATE HIGHWAYS**

SCALE: NONE SHEET 1 OF 1 SHEETS STA. TO STA.

F.A. RTE. 2504	SECTION 20-00335-00-FL	COUNTY KANE	TOTAL SHEETS 25	SHEET NO. 22
TC-21		CONTRACT NO. 61M11		
ILLINOIS FED. AID PROJECT UNJAI(541)				



NOTES:

1. USE BLACK LETTERING ON ORANGE BACKGROUND.
2. ERECT SIGNS IN ADVANCE OF THE LOCATION FOR THE "ROAD CONSTRUCTION AHEAD" SIGN AT LOCATIONS AS DIRECTED BY THE ENGINEER.
3. ERECT SIGN ① WITH INSTALLED PANEL ② ONE WEEK PRIOR TO THE START OF CONSTRUCTION.
4. REMOVE PANEL ② SOON AFTER THE START OF CONSTRUCTION.
5. SEE SPECIAL PROVISION FOR "TEMPORARY INFORMATION SIGNING" FOR ADDITIONAL INFORMATION.
6. ONE SIGN ASSEMBLY EQUALS 25.70 SQ. FT. (2.3 SQ. M.)
7. SHALL BE PAID FOR AS TEMPORARY INFORMATION SIGNING.

ALL DIMENSIONS ARE IN INCHES (MILLIMETERS) UNLESS OTHERWISE SHOWN.

MODEL: D:\mif...
 FILE NAME: p:\mif...

USER NAME	footem	DESIGNED	-	REVISED	- R. MIRS 09-15-97
		DRAWN	-	REVISED	- R. MIRS 12-11-97
PLOT SCALE	= 50,0000 ' / ft.	CHECKED	-	REVISED	- T. RAMMACHER 02-02-99
PLOT DATE	= 3/4/2019	DATE	-	REVISED	- C. JUCIUS 01-31-07

**STATE OF ILLINOIS
DEPARTMENT OF TRANSPORTATION**

**ARTERIAL ROAD
INFORMATION SIGN**

SCALE: NONE SHEET 1 OF 1 SHEETS STA. TO STA.

F.A. RTE.	SECTION	COUNTY	TOTAL SHEETS	SHEET NO.
2504	20-00335-00-FL	KANE	25	23
TC-22		CONTRACT NO. 61M11		
ILLINOIS FED. AID PROJECT UNJAI541				



STATE OF ILLINOIS - PROFESSIONAL DESIGN FIRM
 LICENSE NO. - 184-001121 - EXPIRES 4/30/2025
 mzhao 3/30/2026 7:51:36 AM
 MODEL Default
 FILE NAME P:\ARORC\201383-Edgelawn Drive at CAD\Sheets\201383_SHT-XSec.dgn



USER NAME = mzhao	DESIGNED -	REVISED -
PLOT SCALE = 20.0000' / in.	DRAWN -	REVISED -
PLOT DATE = 3/30/2026	CHECKED -	REVISED -
	DATE - 3/30/2026	FILE - 201383_SHT-XSec.dgn

STATE OF ILLINOIS
 DEPARTMENT OF TRANSPORTATION

CROSS SECTIONS
 SCALE: H:1"=10'; V:1"=5' SHEET 1 OF 2 SHEETS STA. 20+15 TO STA. 21+09

F.A. RTE.	SECTION	COUNTY	TOTAL SHEETS	SHEET NO.
2504	20-00335-00-FL	KANE	25	24
CONTRACT NO. 61M11			ILLINOIS FED. AID PROJECT UNJAI541	



STATE OF ILLINOIS - PROFESSIONAL DESIGN FIRM
 LICENSE NO. - 184-001121 - EXPIRES 4/30/2025
 mzhao 3/30/2026 7:51:36 AM
 MODEL: Default
 FILE NAME: P:\ARORC\0201383-5-Edgelawn Drive at CAD\Sheets\201383_SHT-XSec.dgn



USER NAME = mzhao	DESIGNED -	REVISED -
PLOT SCALE = 20.0000' / in.	DRAWN -	REVISED -
PLOT DATE = 3/30/2026	CHECKED -	REVISED -
	DATE - 3/30/2026	FILE - 201383_SHT-XSec.dgn

STATE OF ILLINOIS
 DEPARTMENT OF TRANSPORTATION

CROSS SECTIONS

SCALE: H:1"=10'; V:1"=5' SHEET 2 OF 2 SHEETS STA. 21+21 TO STA. 22+06

F.A. RTE.	SECTION	COUNTY	TOTAL SHEETS	SHEET NO.
2504	20-00335-00-FL	KANE	25	25
				CONTRACT NO. 61M11
ILLINOIS FED. AID PROJECT UNJAI541				