

FAU RTE.	SECTION	COUNTY	TOTAL SHEETS	SHEET NO.
3515	22-00019-00-RS	LAKE	27	1
FED. ROAD DIST. NO.	ILLINOIS	CONTRACT NO. 61M34		

FOR INDEX OF SHEETS, SEE SHEET NO. 2

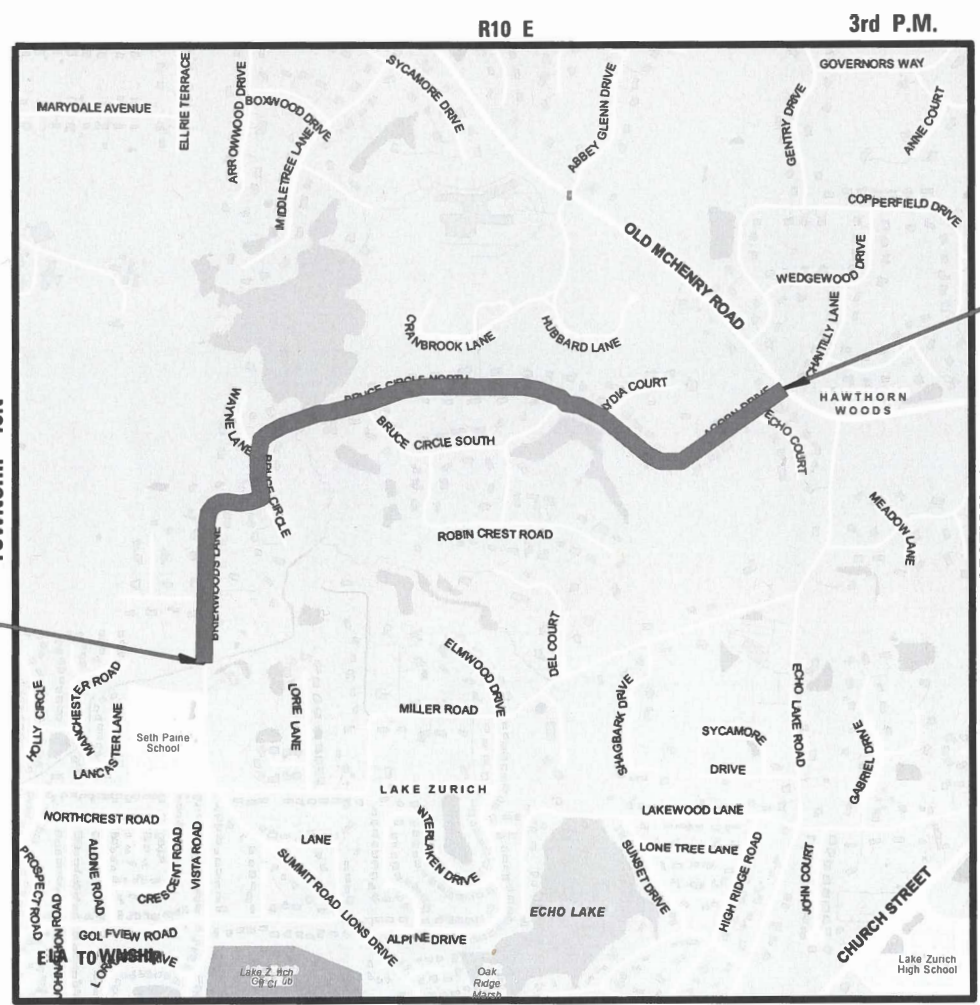
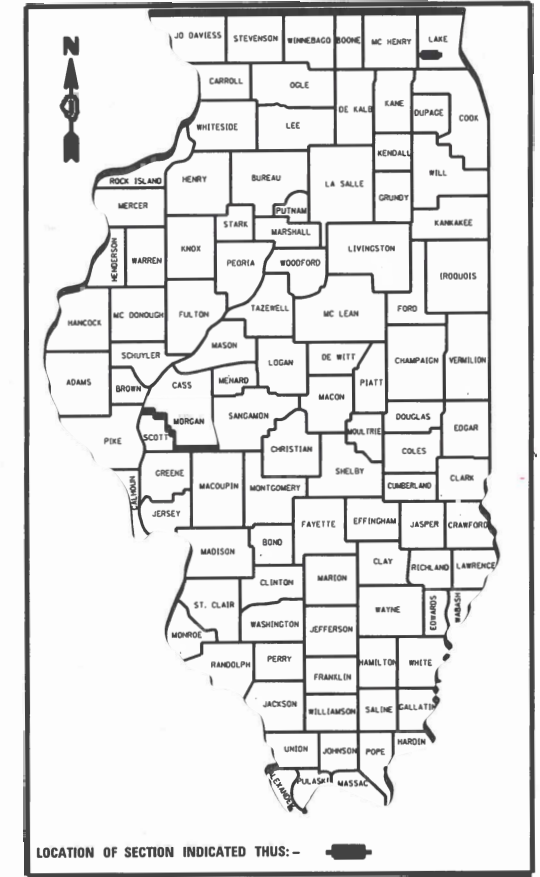
04-24-2026 LETTING ITEM 047

# STATE OF ILLINOIS DEPARTMENT OF TRANSPORTATION PLANS FOR PROPOSED FEDERAL AID HIGHWAY

FAU ROUTE 3515 (ACORN DR/BRUCE CIR/BRIERWOODS LN)  
BRUCE CIRCLE TO OLD MCHENRY ROAD  
RESURFACING  
SECTION NO. 22-00019-00-RS  
PROJECT NO. RHQS(225)  
VILLAGE OF HAWTHORN WOODS  
LAKE COUNTY  
C-91-182-25

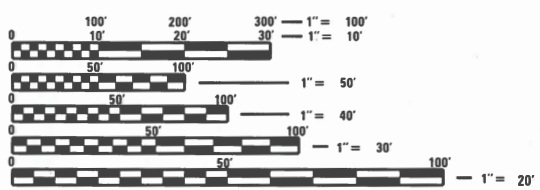
**TRAFFIC DATA**  
ACORN DRIVE\BRUCE CIRCLE\BRIERWOODS LANE  
ADT (YEAR) = 450 (2023)  
POSTED SPEED LIMIT = 25 MPH

**DESIGN DESIGNATION:**  
MINOR COLLECTOR



PROJECT BEGINS  
STA. 101 + 44.75

PROJECT ENDS  
STA. 171 + 60.70



FULL SIZE PLANS HAVE BEEN PREPARED USING STANDARD ENGINEERING SCALES. REDUCED SIZED PLANS WILL NOT CONFORM TO STANDARD SCALES. IN MAKING MEASUREMENTS ON REDUCED PLANS, THE ABOVE SCALES MAY BE USED.

J.U.L.I.E.  
JOINT UTILITY LOCATION INFORMATION FOR EXCAVATION  
8-1-1 OR 1-800-892-0123

**LOCATION MAP**

ACORN DR/BRUCE CIR/BRIERWOODS LN  
GROSS LENGTH OF PROJECT = 7,015.950 LINEAL FEET (1.329 MILES)  
NET LENGTH OF PROJECT = 7,015.950 LINEAL FEET (1.329 MILES)

**CHRISTOPHER B. BURKE ENGINEERING LTD.**  
9575 West Higgins Road, Suite 600  
Rosemont, Illinois 60018 (847) 823-0500

PROFESSIONAL DESIGN FIRM NO. 184-001175  
EXPIRATION DATE: 04/30/27

CONTRACT NO. 61M34

ENGINEER *Lee M. Fell* DATE 2/3/26

STATE OF ILLINOIS  
DEPARTMENT OF TRANSPORTATION

APPROVED FEBRUARY 3 2026  
*[Signature]*  
DIRECTOR OF PUBLIC WORKS / VILLAGE ENGINEER  
VILLAGE OF HAWTHORN WOODS

PASSED FEBRUARY 11 2026  
*[Signature]*  
DISTRICT 1 ENGINEER OF LOCAL ROADS AND STREETS

RELEASING FOR BID BASED ON LIMITED REVIEW Feb 11 2026  
*[Signature]*  
REGIONAL ENGINEER

**PRINTED BY THE AUTHORITY  
OF THE STATE OF ILLINOIS**

FEDERAL AID PROGRAM ENGINEER: CARMEN E. RAMOS, P.E., SCHAMBERG, IL

**INDEX OF SHEETS**

SHEET NO.	DESCRIPTION
1	COVER SHEET
2	GENERAL NOTES AND HIGHWAY STANDARDS
3-4	SUMMARY OF QUANTITIES
5	TYPICAL SECTIONS
6	ROADWAY ALIGNMENT
7-13	EXISTING CONDITIONS AND REMOVAL PLAN
14-20	PROPOSED PLAN
21	CONSTRUCTION DETAILS
22	PAVEMENT PATCHING FOR HMA SURFACED PAVEMENT (BD-22)
23	BUTT JOINT AND HMA TAPER DETAILS (BD-32)
24	TRAFFIC CONTROL AND PROTECTION FOR SIDE ROADS, INTERSECTIONS, AND DRIVEWAYS (TC-10)
25	DISTRICT ONE TYPICAL PAVEMENT MARKINGS (TC-13)
26	SHORT TERM PAVEMENT MARKINGS AND SYMBOLS (TC-16)
27	ARTERIAL ROAD INFORMATION SIGN (TC-22)

**HIGHWAY STANDARDS**

000001-09	STANDARD SYMBOLS, ABBREVIATIONS, AND PATTERNS
420001-11	PAVEMENT JOINTS
483001-06	PCC SHOULDER
701006-05	OFF ROAD OPERATIONS, 2L, 2W, 15' TO 24" FROM PAVEMENT EDGE
701011-05	OFF ROAD MOVING OPERATIONS, 2L, 2W, DAY ONLY
701301-04	LANE CLOSURE, 2L, 2W, SHORT TIME OPERATIONS
701311-03	LANE CLOSURE, 2L, 2W, MOVING OPERATIONS, DAY ONLY
701501-06	URBAN LANE CLOSURE, 2L, 2W, - UNDIVIDED
701901-11	TRAFFIC CONTROL DEVICES
780001-05	TYPICAL PAVEMENT MARKINGS

**DISTRICT ONE DETAILS**

BD-22	PAVEMENT PATCHING FOR HMA SURFACED PAVEMENT
BD-32	BUTT JOINT AND HMA TAPER DETAILS
TC-10	TRAFFIC CONTROL FOR SIDE ROADS, INTERSECTIONS, AND DRIVEWAYS
TC-13	DISTRICT ONE TYPICAL PAVEMENT MARKINGS
TC-16	SHORT TERM PAVEMENT MARKING LETTERS AND SYMBOLS
TC-22	ARTERIAL ROAD INFORMATION SIGN

GENERAL NOTES

SPECIFICATIONS, STANDARDS AND SPECIAL PROVISIONS

- ALL CONSTRUCTION SHALL BE DONE IN ACCORDANCE WITH THE "STANDARD SPECIFICATIONS FOR ROAD AND BRIDGE CONSTRUCTION", ADOPTED JANUARY 1, 2022; THE "SUPPLEMENTAL SPECIFICATIONS AND RECURRING SPECIAL PROVISIONS", ADOPTED JANUARY 1, 2026; THE LATEST EDITION OF THE "ILLINOIS MANUAL ON UNIFORM TRAFFIC CONTROL DEVICES FOR STREETS AND HIGHWAYS", (IMUTCD); "THE STANDARD SPECIFICATIONS FOR WATER AND SEWER MAIN CONSTRUCTION IN ILLINOIS" JUNE 2014 SEVENTH EDITION, THE "DETAILS" IN THE PLANS AND THE "SPECIAL PROVISIONS" INCLUDED IN THE CONTRACT DOCUMENTS.
- ANY REFERENCE TO STANDARDS THROUGHOUT THE PLANS OR SPECIAL PROVISIONS SHALL BE INTERPRETED AS THE LATEST IDOT HIGHWAY STANDARD.
- CODES OF THE IEPA TITLE 35, AND O.S.H.A. SHALL BE ADHERED TO FOR THE CONSTRUCTION OF THIS PROJECT.
- ALL TRAFFIC CONTROL AND OTHER ADVISORY SIGNS NEEDED FOR CONSTRUCTION ARE TO BE FURNISHED BY THE CONTRACTOR IN ACCORDANCE WITH SECTION 700 OF THE STANDARD SPECIFICATIONS.
- ALL REQUIRED PERMITS FROM THE PROPER GOVERNING AGENCY SHALL BE OBTAINED FOR CONSTRUCTION ALONG OR ACROSS EXISTING STREETS OR HIGHWAYS. THE CONTRACTOR SHALL MAKE ARRANGEMENTS FOR THE PROPER BRACING, SHEETING, SHORING AND OTHER REQUIRED PROTECTION OF ALL ROADWAYS BEFORE CONSTRUCTION BEGINS. THE CONTRACTOR SHALL BE RESPONSIBLE FOR ANY DAMAGE TO THE STREETS OR ROADWAYS AND ASSOCIATED STRUCTURES AND SHALL MAKE REPAIRS AS NECESSARY TO THE SATISFACTION OF THE AGENCY. THE CONTRACTOR SHALL BE RESPONSIBLE FOR THE INSTALLATION AND MAINTENANCE OF ADEQUATE SIGNS AND WARNING DEVICES TO INFORM AND PROTECT THE PUBLIC.

UTILITIES

- THE CONTRACTOR SHALL BE RESPONSIBLE FOR CONTACTING THE OWNERS OF ALL EXISTING UTILITY FACILITIES SO THAT THE UTILITIES AND THEIR APPURTENANCES MAY BE LOCATED AND ADJUSTED OR MOVED, IF NECESSARY, PRIOR TO THE START OF CONSTRUCTION OPERATIONS. THE CONTRACTOR SHALL COOPERATE WITH ALL UTILITY OWNERS AS PROVIDED FOR IN THE STANDARD SPECIFICATIONS.
- THE CONTRACTOR SHALL BE RESPONSIBLE FOR THE PROTECTION OF ALL UNDERGROUND OR SURFACE UTILITIES EVEN THOUGH THEY MAY NOT BE SHOWN ON THE PLANS. ANY UTILITY THAT IS DAMAGED DURING CONSTRUCTION SHALL BE REPAIRED OR REPLACED TO THE SATISFACTION OF THE ENGINEER.

WATER, STORM SEWER AND SANITARY SEWER

- WHENEVER DURING CONSTRUCTION OPERATIONS ANY LOOSE MATERIAL IS DEPOSITED IN THE FLOW LINE OF DRAINAGE STRUCTURES SUCH THAT THE NATURAL FLOW OF WATER IS OBSTRUCTED, IT SHALL BE REMOVED AT THE CLOSE OF EACH WORKING DAY. AT THE CONCLUSION OF CONSTRUCTION OPERATIONS, ALL UTILITY STRUCTURES SHALL BE FREE FROM DIRT AND DEBRIS.
- THE CONTRACTOR SHALL NOT OPEN OR SHUT ANY WATER VALVES OR FIRE HYDRANTS. CONTACT THE VILLAGE OF HAWTHORN WOODS (TEL. 847-438-5500) FOR THEM TO TURN VALVES OR OPERATE HYDRANTS. ANY UNAUTHORIZED USE OF THIS EQUIPMENT THE OFFENDER WILL BE SUBJECT TO ARREST AND PROSECUTION.

MISCELLANEOUS

- DIMENSIONS: IT SHALL BE THE CONTRACTOR'S RESPONSIBILITY TO VERIFY ALL DIMENSIONS AND CONDITIONS EXISTING IN THE FIELD PRIOR TO ORDERING MATERIALS AND BEGINNING CONSTRUCTION.
- ALL SAWCUTTING SHALL BE PERFORMED PRIOR TO BEGINNING REMOVAL. ANY ITEMS OF WORK REMOVED PRIOR TO SAWCUTTING WILL NOT BE MEASURED FOR PAYMENT.
- RELOCATING EXISTING SIGNS: EXISTING SIGNS WHICH ARE IN CONFLICT WITH PROPOSED IMPROVEMENTS SHALL BE REMOVED AND REINSTALLED UPON COMPLETION OF CONFLICTING IMPROVEMENTS IN ACCORDANCE WITH ARTICLE 107.25 OF THE "STANDARD SPECIFICATIONS FOR ROAD AND BRIDGE CONSTRUCTION". STOP SIGNS, SPEED LIMIT SIGNS, AND STREET NAME SIGNS SHALL BE UP AND VISIBLE AT ALL TIMES.

4. FRESH OIL SIGNS SHALL BE POSTED AT BOTH ENDS OF THE ROADWAY AND ALL SIDE STREETS AS DIRECTED BY THE ENGINEER. ROAD CONSTRUCTION AHEAD SIGNS SHALL REMAIN UNTIL PUNCHLIST/CLEANUP ACTIVITIES UNLESS OTHERWISE DIRECTED BY THE ENGINEER.

5. NO CONSTRUCTION SHALL BEGIN UNTIL ALL PROPER TEMPORARY SIGNS AND BARRICADES HAVE BEEN INSTALLED.

6. ALL ROADS MUST HAVE ONLY ONE LONGITUDINAL JOINT WHILE PAVING.

7. VANDALISM - SPECIAL ATTENTION IS CALLED TO THE SPECIAL PROVISION FOR "INSPECTION" AS WELL AS ARTICLE 107.30 OF THE "STANDARD SPECIFICATIONS." ANY DEFACED WORK AS DETERMINED AND DIRECTED BY THE VILLAGE SHALL BE CORRECTED OR REPLACED TO THE SATISFACTION OF THE ENGINEER. THE VILLAGE OF HAWTHORN WOODS WILL COOPERATE WITH THE CONTRACTOR TO MINIMIZE VANDALISM, BUT THE CONTRACTOR SHALL BE ULTIMATELY RESPONSIBLE TO CORRECT ANY DAMAGE. THE VILLAGE WILL NOT BE RESPONSIBLE FOR THE SECURITY OF THE WORK SITE IN THIS REGARD, OTHER THAN NORMAL PATROLLING AND REPOSE TO EMERGENCIES. SECURITY REQUIRED TO MEET THIS SPECIAL PROVISION SHALL BE INCLUDED.

8. FLAGGERS SHALL BE PRESENT DURING SURFACE REMOVAL AS WELL AS RESURFACING ACTIVITIES.

9. CONTRACTOR SHALL TAKE PRECAUTION BY PRESERVING EXISTING TREES WITHIN THE RIGHT OF WAY. IF ANY DAMAGE OCCURS, TREES SHALL BE REPLACED IN KIND PER ARTICLE 201.07 REPAIR OR REPLACEMENT OF EXISTING PLANT MATERIAL REQUIREMENTS STATED HEREIN.

SUBSURFACE EXPLORATION DATA

1. ALL EXCAVATED SOILS SHALL BE REDISTRIBUTED WITHIN THE EXISTING RIGHT-OF-WAY. EXCAVATED SOIL SHALL BE PLACED ON EXISTING DITCH SIDE SLOPES PER THE ENGINEER AND SHALL NOT EXCEED A 3:1 SLOPE PER VILLAGE CODE 10-3-10 H.

- THE SUBGRADE STABILITY SHALL BE VERIFIED BY PROOF ROLLING WITH A FULLY LOADED TANDEM-AXLE TRUCK.
- ANY AGGREGATE SUBGRADE CONTAMINATED AND/OR DAMAGED BY THE CONTRACTOR'S VEHICLES AND/OR EQUIPMENT IS TO BE REMOVED AND REPLACED AS DIRECTED BY THE ENGINEER AT THE CONTRACTOR'S EXPENSE.
- BACKFILLING STORM SEWER CONSTRUCTED UNDER THE ROADWAY SPECIFIED UNDER ART. 550.07(b,c) OF THE SSRBC WILL NOT BE ALLOWED.

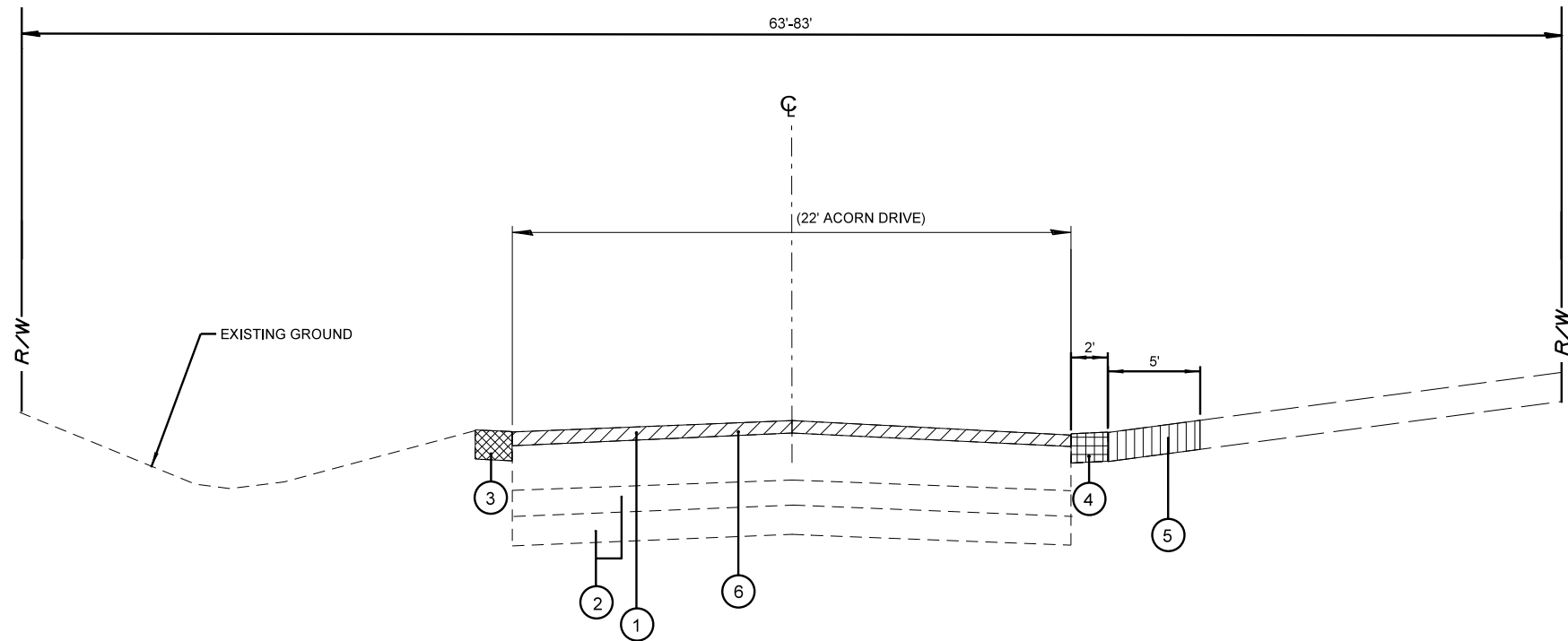
FILE NAME = N:\HAWTHORNWOODS\240659\Civi1\02_NOT_240659.sht	USER NAME = jhouseh	DESIGNED - JEH	REVISED -	<b>STATE OF ILLINOIS DEPARTMENT OF TRANSPORTATION</b>	<b>GENERAL NOTES AND HIGHWAY STANDARDS</b>	F.A.U. RTE.	SECTION	COUNTY	TOTAL SHEETS	SHEET NO.	
Default	PLOT SCALE = 48'	DRAWN - JEH	REVISED -			3515	22-00019-00-RS	LAKE	27	2	
	PLOT DATE = 2/23/2026	CHECKED - LMF	REVISED -			<b>CONTRACT NO. 61M34</b>					
		DATE -	REVISED -			SCALE: N.T.S.	SHEET OF SHEETS	STA. TO STA.	(ILLINOIS) FED. AID PROJECT		

## SUMMARY OF QUANTITIES

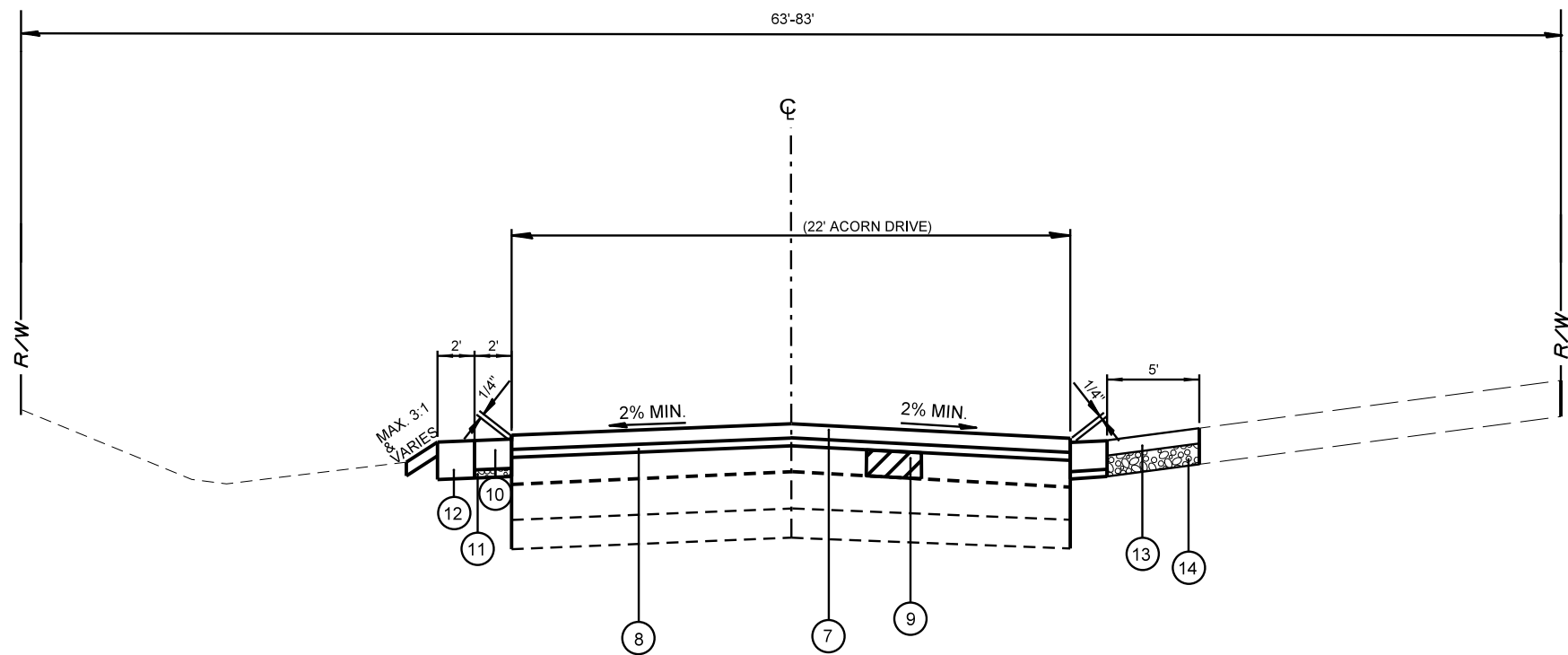
SPECIALTY ITEM	ITEM NO.	ITEM	UNIT	CONSTRUCTION TYPE CODE 0005 (80% FEDERAL / 20% LOCAL)
	21101625	TOPSOIL FURNISH AND PLACE, 6"	SQ YD	725
	25200110	SODDING, SALT TOLERANT	SQ YD	725
	25200200	SUPPLEMENTAL WATERING	UNIT	40
	31101200	SUBBASE GRANULAR MATERIAL, TYPE B 4"	SQ YD	510
	35101800	AGGREGATE BASE COURSE, TYPE B 6"	SQ YD	185
	40600400	MIXTURE FOR CRACKS, JOINTS, AND FLANGEWAYS	TON	2
	40600982	HOT-MIX ASPHALT SURFACE REMOVAL - BUTT JOINT	SQ YD	156
	40603200	POLYMERIZED HOT-MIX ASPHALT BINDER COURSE, IL-4.75, N50	TON	757
	40604060	HOT-MIX ASPHALT SURFACE COURSE, IL-9.5, MIX "D", N50	TON	1541
	40600290	BITUMINOUS MATERIALS (TACK COAT)	POUND	12400
	44000157	HOT-MIX ASPHALT SURFACE REMOVAL, 2"	SQ YD	18342
	44000200	DRIVEWAY PAVEMENT REMOVAL	SQ YD	185
	44201737	CLASS D PATCHES, TYPE I, 8 INCH	SQ YD	40
	44201741	CLASS D PATCHES, TYPE II, 8 INCH	SQ YD	277
	44201745	CLASS D PATCHES, TYPE III, 8 INCH	SQ YD	40
	44201747	CLASS D PATCHES, TYPE IV, 8 INCH	SQ YD	40

SPECIALTY ITEM	ITEM NO.	ITEM	UNIT	CONSTRUCTION TYPE CODE 0005 (80% FEDERAL / 20% LOCAL)
	48300400	PORTLAND CEMENT CONCRETE SHOULDERS 9"	SQ YD	670
	67100100	MOBILIZATION	LSUM	1
	70102620	TRAFFIC CONTROL AND PROTECTION, STANDARD 701501	LSUM	1
	70300100	SHORT TERM PAVEMENT MARKING	FOOT	120
	70300150	SHORT TERM PAVEMENT MARKING REMOVAL	SQ FT	60
*	78001180	PAINT PAVEMENT MARKING - LINE 24"	FOOT	120
	K1004595	PRUNING FOR SAFETY AND EQUIPMENT CLEARANCE	LSUM	1
	X4060280	HOT-MIX ASPHALT DRIVEWAY PAVEMENT, 3"	SQ YD	185
	X4404262	SHOULDER REMOVAL (SPECIAL)	SQ YD	715
	X7200061	TEMPORARY INFORMATION SIGNING	SQ FT	130
	Z0013798	CONSTRUCTION LAYOUT	LSUM	1

\*SPECIALTY ITEM



**EXISTING TYPICAL SECTION  
ACORN DRIVE/BRUCE CIRCLE/BRIERWOODS LANE  
STA. 101+44.75 - STA. 171+70.60**



**PROPOSED TYPICAL SECTION  
ACORN DRIVE/BRUCE CIRCLE/BRIERWOODS LANE  
STA. 101+44.75 - STA. 171+70.60**

HOT-MIX ASPHALT MIXTURE REQUIREMENTS		
RESURFACING ITEM	AIR VOIDS @ Ndes	QMP
HOT-MIX ASPHALT SURFACE COURSE, MIX "D", N50 (IL 9.5 mm), 1.5"	4% @ 50 GYR.	LR 1030-2
POLYMERIZED HOT-MIX ASPHALT BINDER COURSE, IL-4.75, N50, 0.75"	3.5% @ 50 GYR.	LR 1030-2
PATCHING ITEM		
CLASS D PATCHES, (HMA BINDER IL 19MM) 8 INCH	4% @ 70 GYR.	LR 1030-2
HMA DRIVEWAY PAVEMENT 3"		
HOT-MIX ASPHALT SURFACE COURSE, IL-9.5, MIX "D", N50 3" (IN 2 LIFTS)	4% @ 50 GYR.	LR 1030-2
QMP DESIGNATION: QUALITY CONTROL/QUALITY ASSURANCE (QC/QA) PER LR 1030-2		

**MIXTURE REQUIREMENT NOTES:**

1. THE UNIT WEIGHT USED TO CALCULATE ALL HOT-MIX ASPHALT SURFACE MIXTURE IS 112 LBS/SY/IN. THE "AC TYPE" FOR POLYMERIZED HMA MIXES SHALL BE "SBS/SBR PG 76-22" AND FOR NON-POLYMERIZED HMA THE "AC TYPE" SHALL BE "PG 64-22" UNLESS MODIFIED RECLAIMED MATERIAL SPECIFICATIONS.

**NOTES:**

1. PAVING OF THE FULL ROADWAY WIDTH SHALL BE COMPLETED AT THE END OF EACH DAY OF PAVING TO PREVENT A LONGITUDINAL COLD JOINT FROM APPEARING WHEN OPPOSITE SIDES OF THE ROAD ARE PAVED ON DIFFERENT DAYS. THE CONTRACTOR SHALL ALSO ENSURE THAT AT THE END OF EACH DAY EACH PASS ENDS AT APPROXIMATELY THE SAME STATION TO PREVENT A COLD JOINT.
2. PAVEMENT PATCHING SHALL BE DONE AFTER ROADWAY MILLING AS PER BD-22 DETAIL.

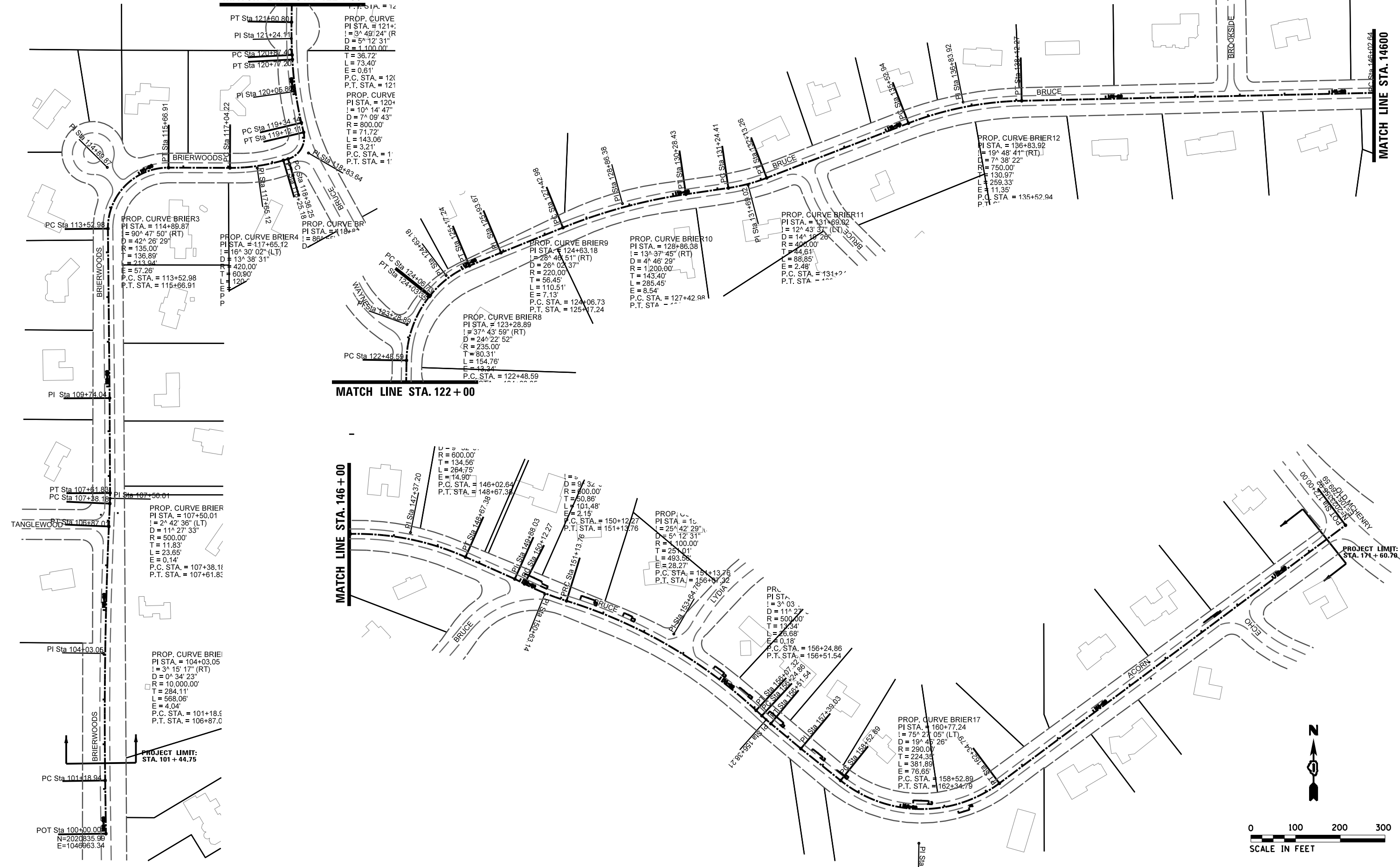
**LEGEND**

- ① EXISTING HOT-MIX ASPHALT PAVEMENT
- ② EXISTING AGGREGATE BASE/SUBBASE
- ③ EXISTING CONCRETE RIBBON/SHOULDER REMOVAL (SPECIAL) (AS DIRECTED BY THE ENGINEER) (\*X4404264)
- ④ EXCAVATION FOR PROPOSED PORTLAND CEMENT CONCRETE SHOULDERS, 9" (INCLUDED IN COST)
- ⑤ DRIVEWAY PAVEMENT REMOVAL (44000200)
- ⑥ HOT-MIX ASPHALT SURFACE REMOVAL, 2" (44000157)
- ⑦ HOT-MIX ASPHALT SURFACE COURSE, IL-9.5, MIX "D", N50 - 1.5" (40604060)
- ⑧ POLYMERIZED HOT-MIX ASPHALT BINDER COURSE, IL-4.75, N50- 0.75" (40603200)
- ⑨ CLASS D PATCHES, 8 INCH (TYPE H-V) (44201737, 44201741, 44201745, 44201747)
- ⑩ PORTLAND CEMENT CONCRETE SHOULDERS, 9" (48300400)
- ⑪ SUBBASE GRANULAR MATERIAL, TYPE B 4" (FOR PROPOSED PORTLAND CEMENT CONCRETE SHOULDERS, 9") (31101200)
- ⑫ TOPSOIL FURNISH AND PLACE, 6" (21101625) & SODDING, SALT TOLERANT (25200110)
- ⑬ HOT-MIX ASPHALT DRIVEWAY PAVEMENT, 3" (\*X4060280)
- ⑭ AGGREGATE BASE COURSE, TYPE B 6" (35101800) (FOR PROPOSED DRIVEWAYS)

FILE NAME = N:\HAWTHORNWOODS\240659\Civil\05.TYP.240659.sht	USER NAME = jhouseh	DESIGNED - JEH	REVISED -	<b>STATE OF ILLINOIS DEPARTMENT OF TRANSPORTATION</b>	<b>TYPICAL SECTIONS</b>			F.A.U. RTÉ.	SECTION	COUNTY	TOTAL SHEETS	SHEET NO.			
Default	PLOT SCALE = 1/40'	DRAWN - JEH	REVISED -		SCALE: N.T.S.	SHEET	OF	SHEETS	STA.	TO STA.	3515	22-00019-00-RS	LAKE	27	5
	PLOT DATE = 2/3/2026	CHECKED - LMF	REVISED -												
		DATE -	REVISED -												

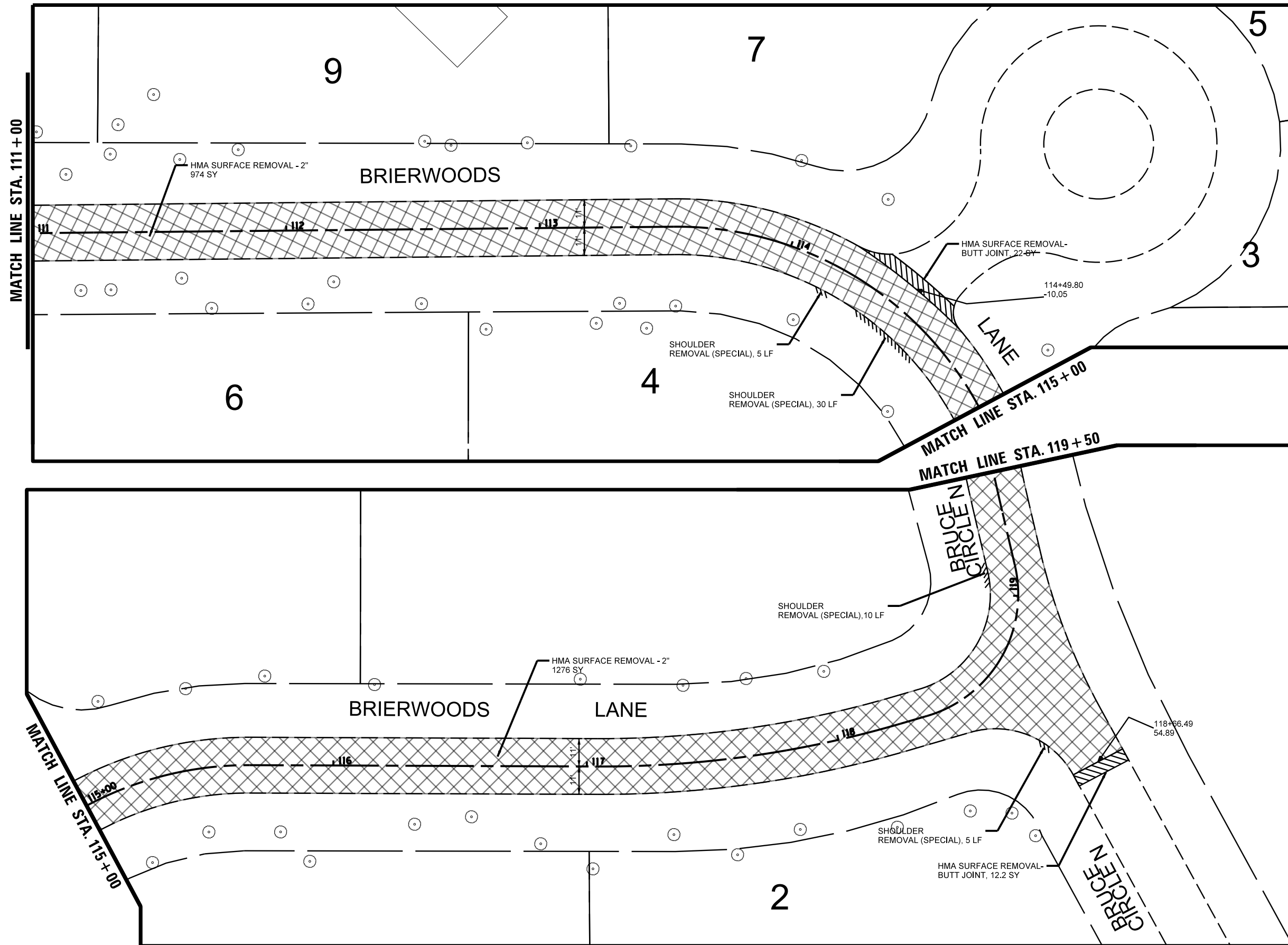
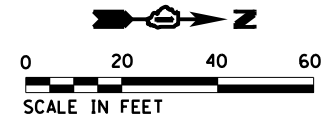
MATCH LINE STA. 122 + 00

MATCH LINE STA. 14600



FILE NAME = N:\HAWTHORNWOODS\240659\Civil\06.ALI.240659.sht	USER NAME = jhouseh	DESIGNED - JEH	REVISED -	<b>STATE OF ILLINOIS DEPARTMENT OF TRANSPORTATION</b>	<b>ROADWAY ALIGNMENT</b>			F.A.U. RTÉ.	SECTION	COUNTY	TOTAL SHEETS	SHEET NO.		
PLOT SCALE = 200'	PLOT DATE = 12/17/2025	DRAWN - JEH	REVISED -		SCALE: 200'	SHEET	OF SHEETS	STA.	TO STA.	3515	22-00019-00-R5	LAKE	27	6
		CHECKED - LMF	REVISED -											
		DATE -	REVISED -											
CONTRACT NO. 61M34												ILLINOIS FED. AID PROJECT		





LEGEND	
	SHOULDER REMOVAL AND REPLACEMENT (SPECIAL)
	HMA SURFACE REMOVAL - 2"
	DRIVEWAY PAVEMENT REMOVAL
	HMA SURFACE REMOVAL - BUTT JOINT
	EXCAVATION FOR PORTLAND CEMENT CONCRETE SHOULDERS, 9"
	EXISTING TREE

FILE NAME =  
N:\HAWTHORNWOODS\240659\Civil\08\_REM02

USER NAME = jhouseh  
240659.sht  
PLOT SCALE = 40'  
PLOT DATE = 12/17/2025

DESIGNED - JEH  
DRAWN - JEH  
CHECKED - LMF  
DATE -

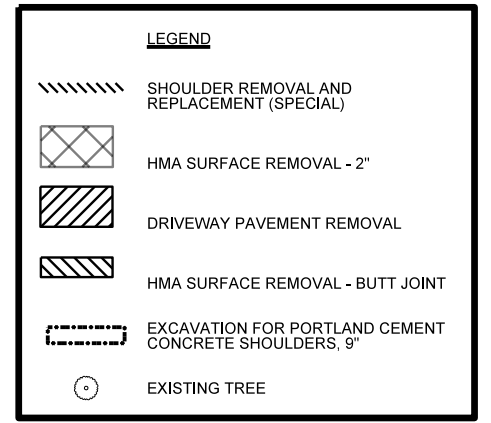
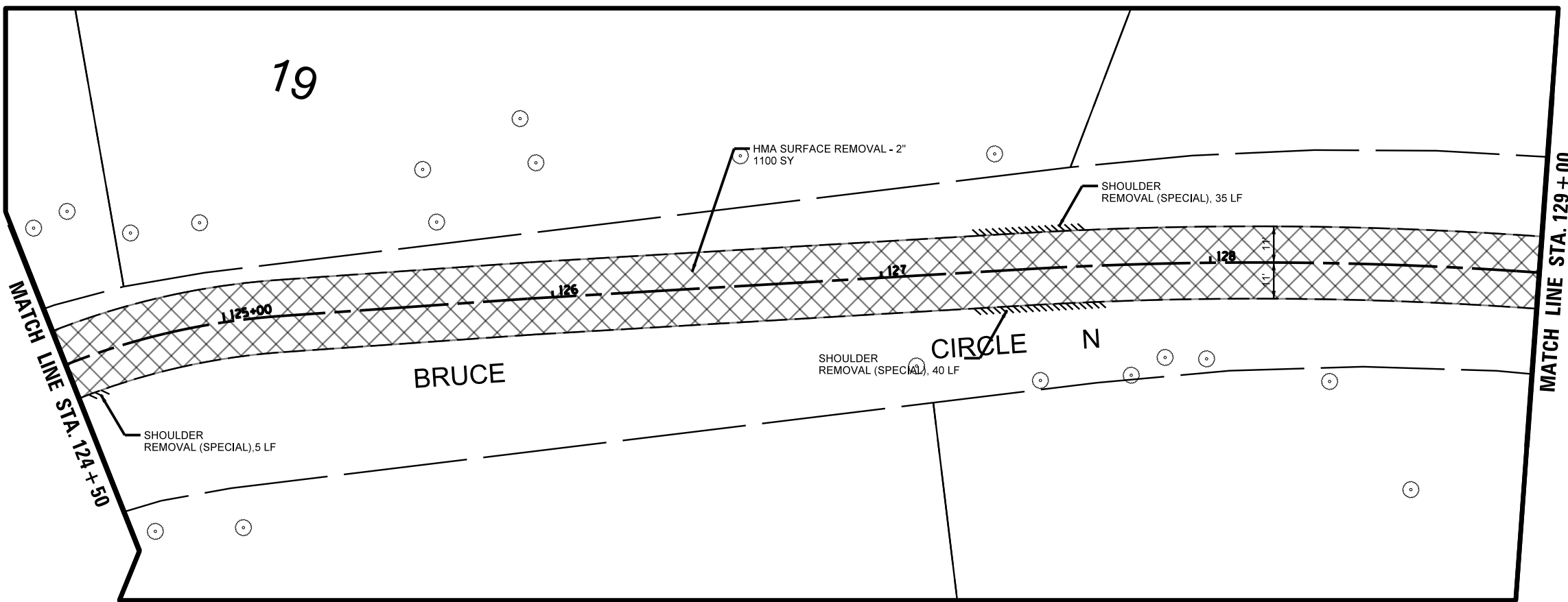
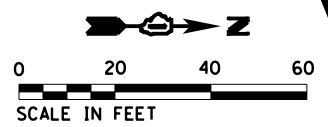
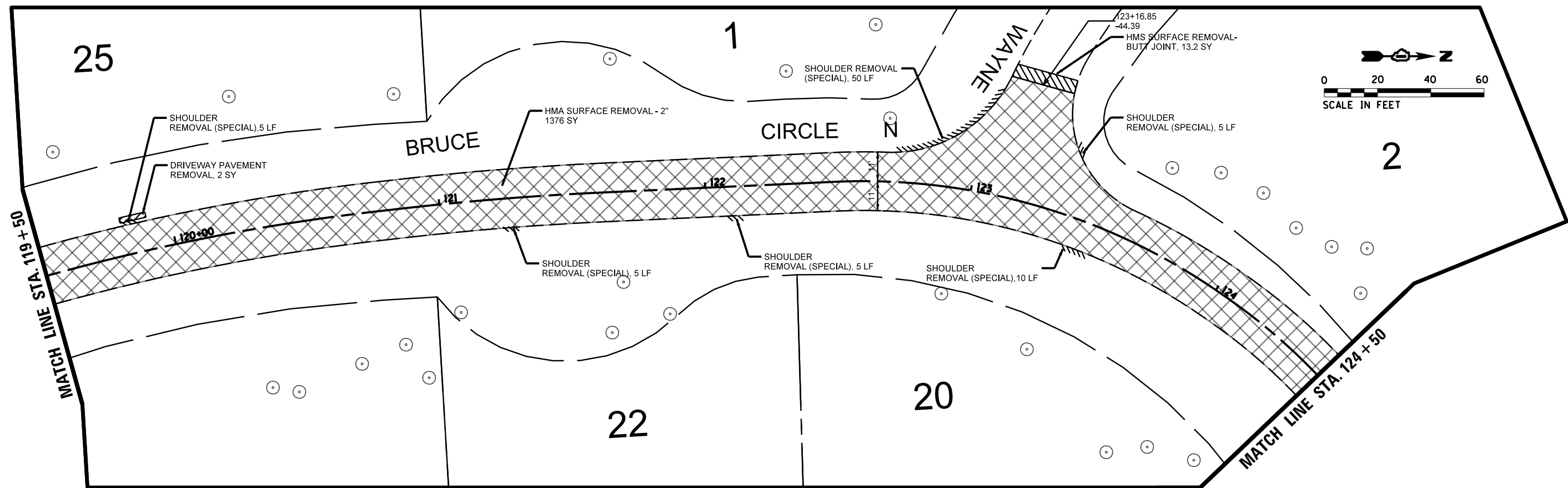
REVISED -  
REVISED -  
REVISED -  
REVISED -

STATE OF ILLINOIS  
DEPARTMENT OF TRANSPORTATION

EXISTING CONDITIONS AND REMOVAL PLAN

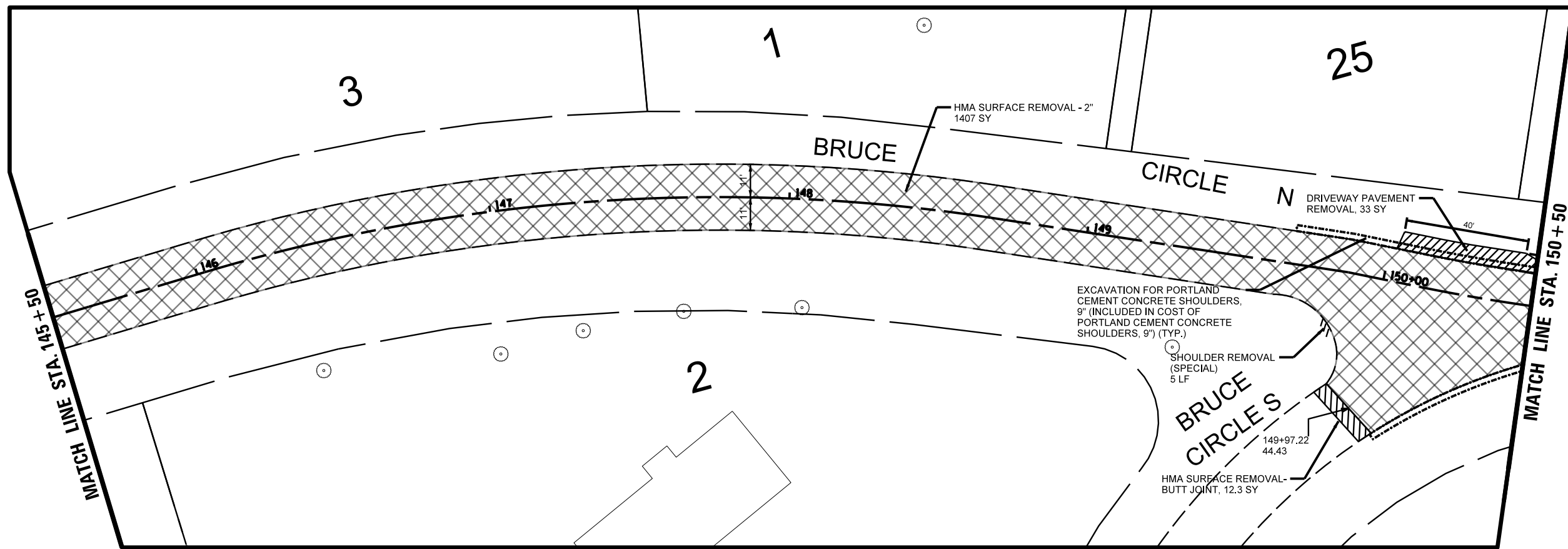
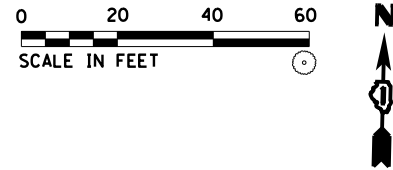
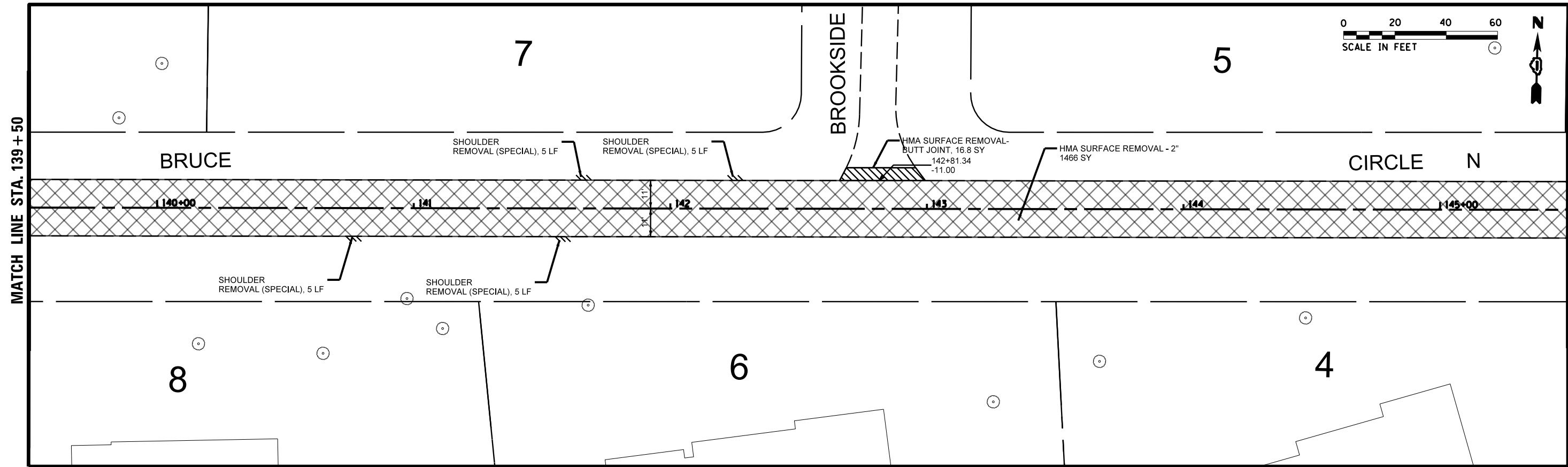
SCALE: 40' SHEET OF SHEETS STA. TO STA.

F.A.U. RTE.	SECTION	COUNTY	TOTAL SHEETS	SHEET NO.
3515	22-00019-00-R5	LAKE	27	8
CONTRACT NO. 61M34				
ILLINOIS FED. AID PROJECT				



FILE NAME = N:\HAWTHORNWOODS\240659\Civil\09_REM03	USER NAME = jhouseh 240659.sht	DESIGNED - JEH	REVISED -	<b>STATE OF ILLINOIS DEPARTMENT OF TRANSPORTATION</b>	<b>EXISTING CONDITIONS AND REMOVAL PLAN</b>				F.A.U. RTÉ. 3515	SECTION 22-00019-00-R5	COUNTY LAKE	TOTAL SHEETS 27	SHEET NO. 9
Default	PLOT SCALE = 48'	CHECKED - LMF	REVISED -		SCALE: 40'	SHEET	OF	SHEETS	STA.	TO	STA.	<b>CONTRACT NO. 61M34</b>	
	PLOT DATE = 12/17/2025	DATE -	REVISED -		ILLINOIS FED. AID PROJECT								





LEGEND	
	SHOULDER REMOVAL AND REPLACEMENT (SPECIAL)
	HMA SURFACE REMOVAL - 2"
	DRIVEWAY PAVEMENT REMOVAL
	HMA SURFACE REMOVAL - BUTT JOINT
	EXCAVATION FOR PORTLAND CEMENT CONCRETE SHOULDERS, 9"
	EXISTING TREE

FILE NAME =	USER NAME = jhouseh	DESIGNED - JEH	REVISED -
N:\HAWTHORNWOODS\240659\Civil\111.REM05_40659.sht		DRAWN - JEH	REVISED -
Default	PLOT SCALE = 40'	CHECKED - LMF	REVISED -
	PLOT DATE = 12/17/2025	DATE -	REVISED -

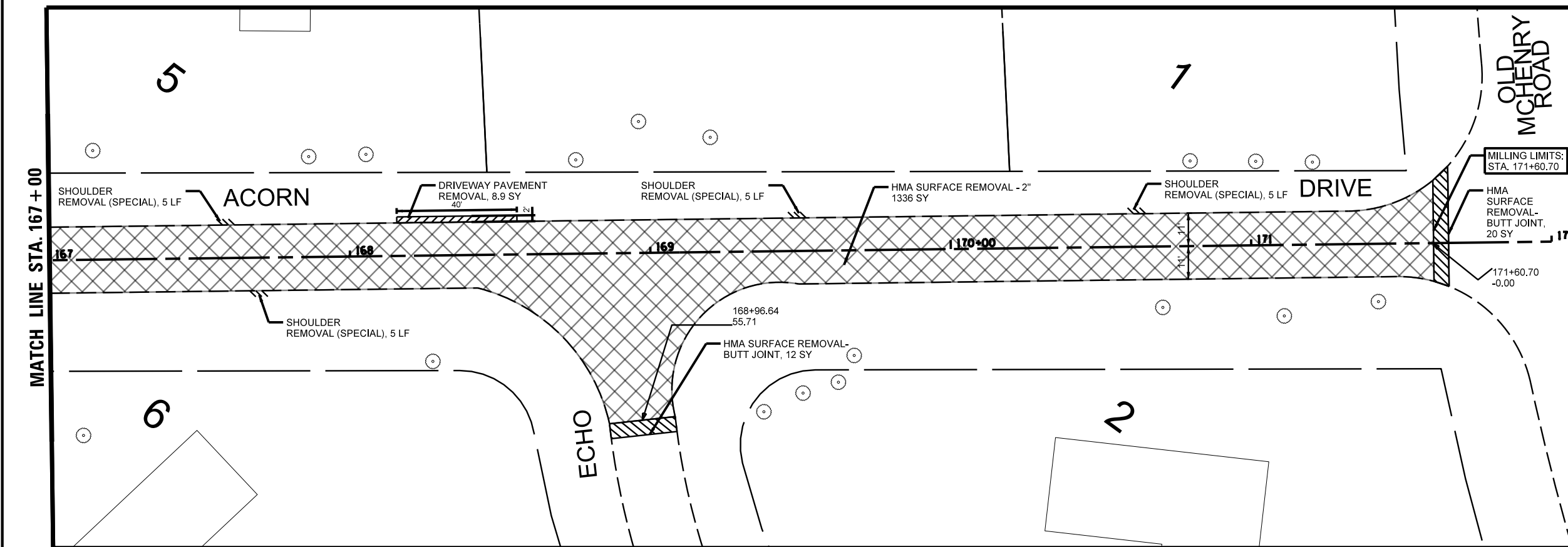
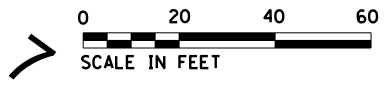
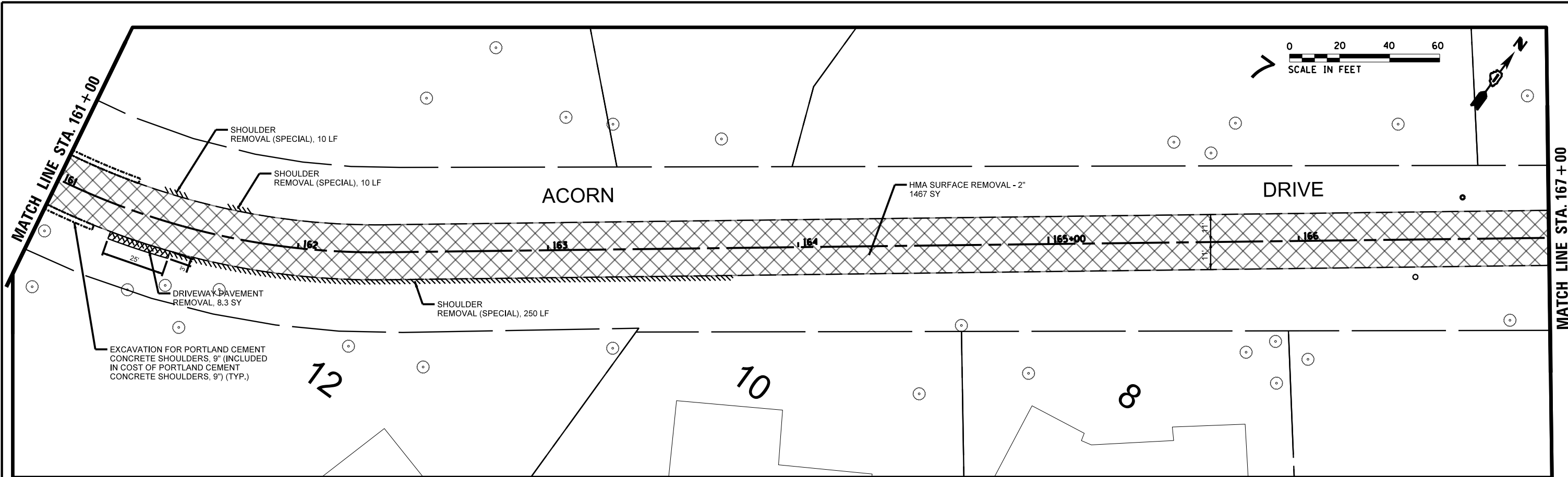
**STATE OF ILLINOIS  
DEPARTMENT OF TRANSPORTATION**

**EXISTING CONDITIONS AND REMOVAL PLAN**

SCALE: 40'    SHEET OF SHEETS    STA. TO STA.

F.A.U. RTE.	SECTION	COUNTY	TOTAL SHEETS	SHEET NO.
3515	22-00019-00-R5	LAKE	27	11
<b>CONTRACT NO. 61M34</b>				
ILLINOIS FED. AID PROJECT				





MILLING LIMITS:  
STA. 171+60.70

LEGEND	
	SHOULDER REMOVAL AND REPLACEMENT (SPECIAL)
	HMA SURFACE REMOVAL - 2"
	DRIVEWAY PAVEMENT REMOVAL
	HMA SURFACE REMOVAL - BUTT JOINT
	EXCAVATION FOR PORTLAND CEMENT CONCRETE SHOULDERS, 9"
	EXISTING TREE

FILE NAME = N:\HAWTHORNWOODS\240659\Civil\13\_REM07\_240659.sht  
 USER NAME = jhouseh  
 PLOT SCALE = 40'  
 PLOT DATE = 12/17/2025

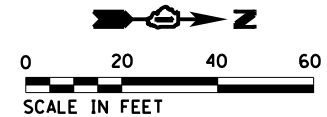
DESIGNED - JEH	REVISED -
DRAWN - JEH	REVISED -
CHECKED - LMF	REVISED -
DATE -	REVISED -

STATE OF ILLINOIS  
DEPARTMENT OF TRANSPORTATION

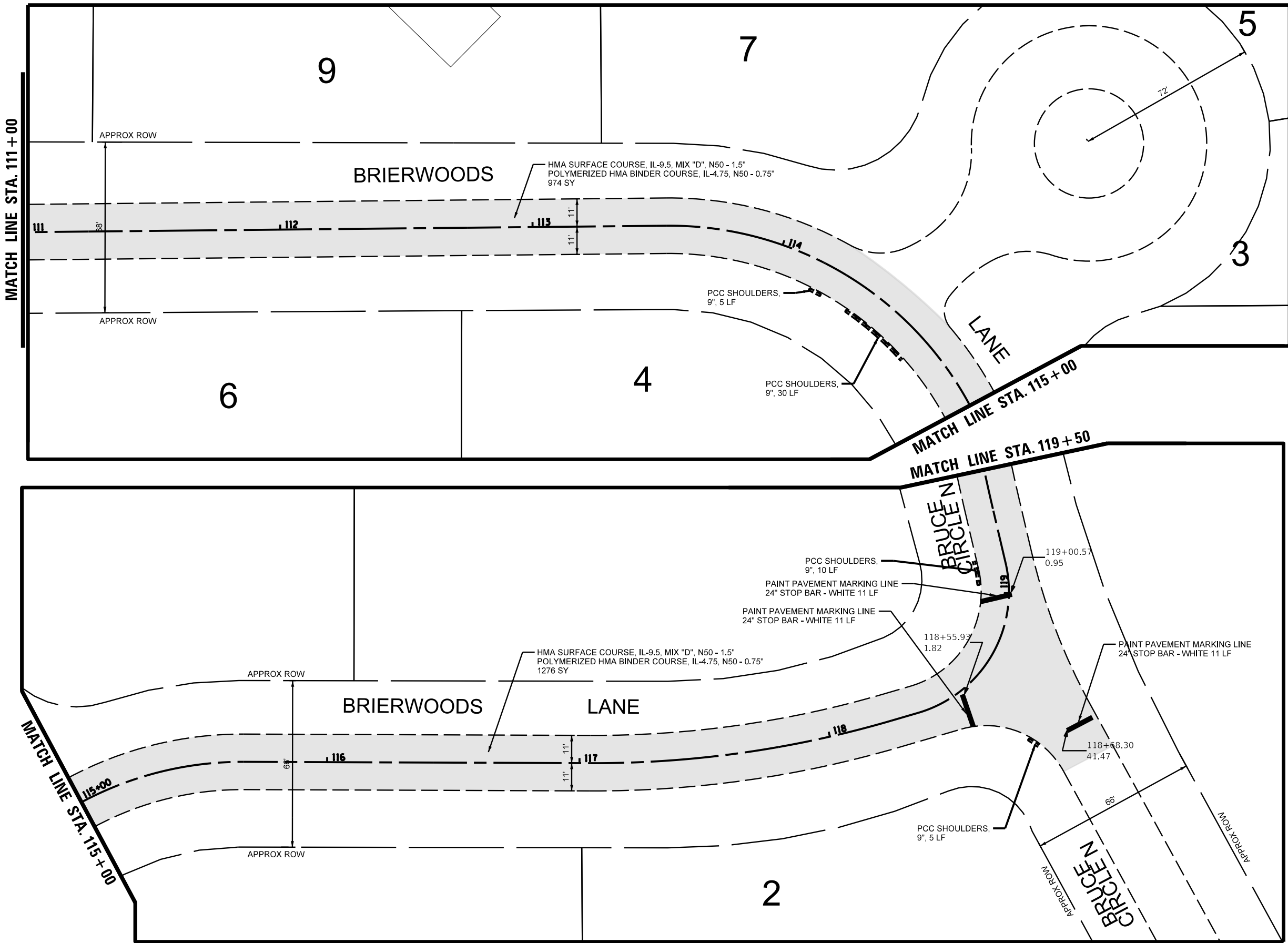
EXISTING CONDITIONS AND REMOVAL PLAN  
 SCALE: 40' SHEET OF SHEETS STA. TO STA.

F.A.U. RTE.	SECTION	COUNTY	TOTAL SHEETS	SHEET NO.
3515	22-00019-00-R5	LAKE	27	13
CONTRACT NO. 61M34				
ILLINOIS FED. AID PROJECT				





LEGEND	
	PORTLAND CEMENT CONCRETE SHOULDERS, 9"
	SHOULDER REPLACEMENT (SPECIAL)
	-HOT-MIX ASPHALT SURFACE COURSE, IL-9.5, MIX "D", N50 - 1.50" -POLYMERIZED HOT-MIX ASPHALT BINDER COURSE, IL-4.75, N50 - 0.75"
	HOT MIX ASPHALT DRIVEWAY PAVEMENT, 3 INCH
	STORM SEWER, CLASS A, TYPE 1
	PRECAST REINFORCED FLARED END SECTION 15" W/ CONCRETE COLLAR



FILE NAME =	USER NAME = jhouseh
N:\HAWTHORNWOODS\240659\Civil\115_PRO02_240659.sht	
Default	PLOT DATE = 12/17/2025

DESIGNED - JEH	REVISED -
DRAWN - JEH	REVISED -
CHECKED - LMF	REVISED -
DATE -	REVISED -

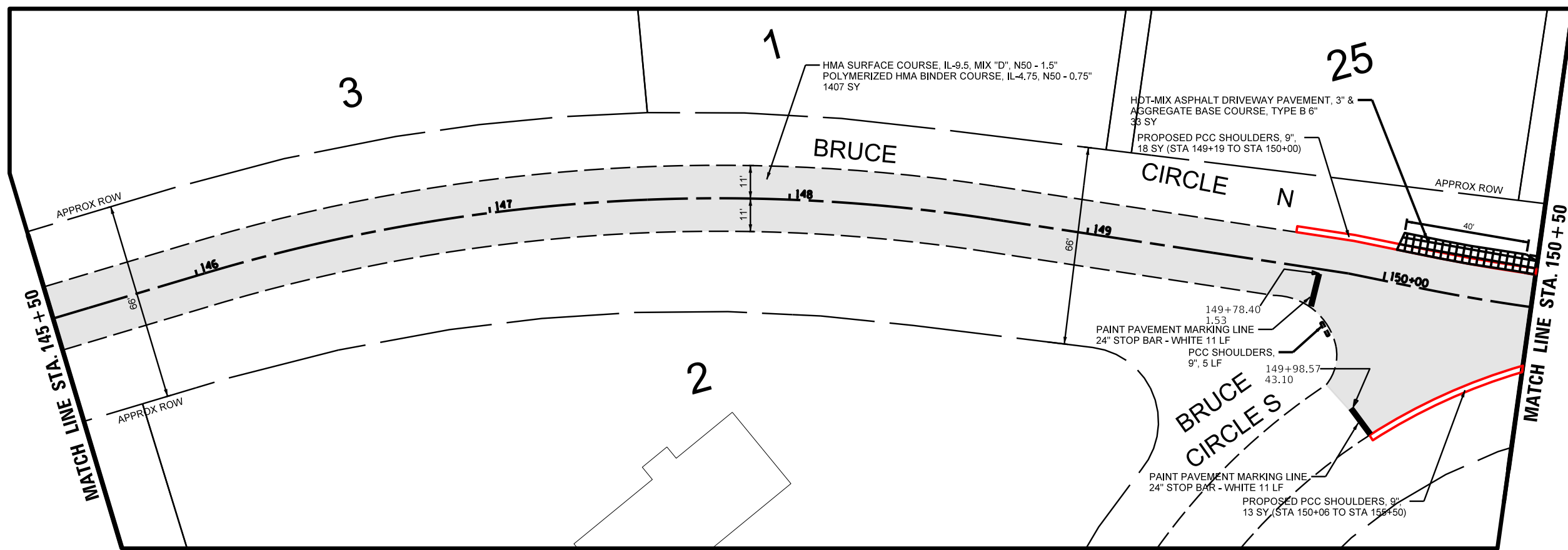
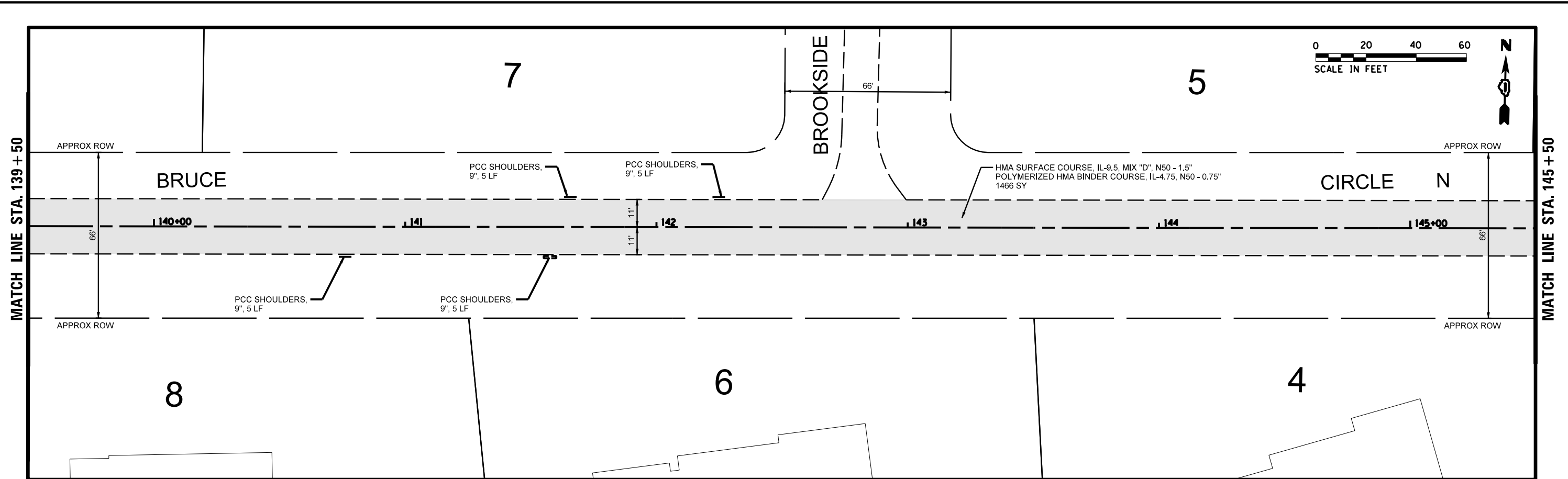
**STATE OF ILLINOIS  
DEPARTMENT OF TRANSPORTATION**

<b>PROPOSED PLAN</b>			
SCALE: 40'	SHEET	OF SHEETS	STA. TO STA.

F.A.U. RTE.	SECTION	COUNTY	TOTAL SHEETS	SHEET NO.
3515	22-00019-00-R5	LAKE	27	15
<b>CONTRACT NO. 61M34</b>				
ILLINOIS FED. AID PROJECT				







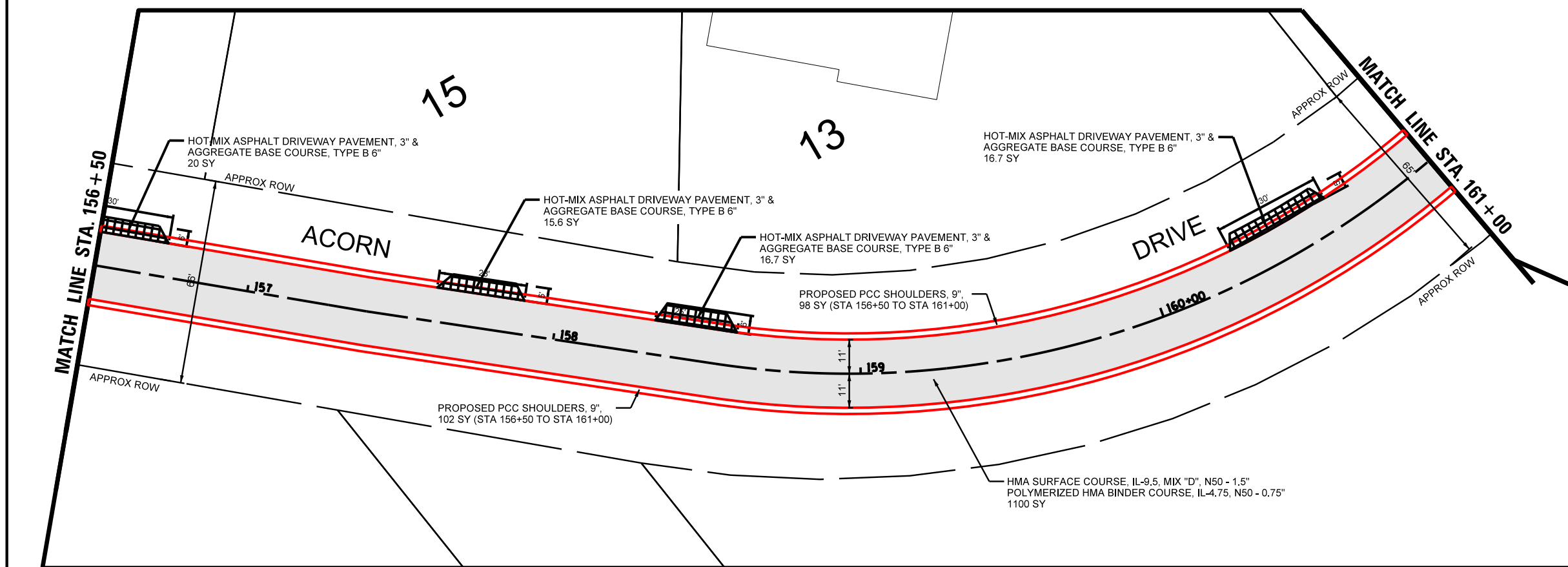
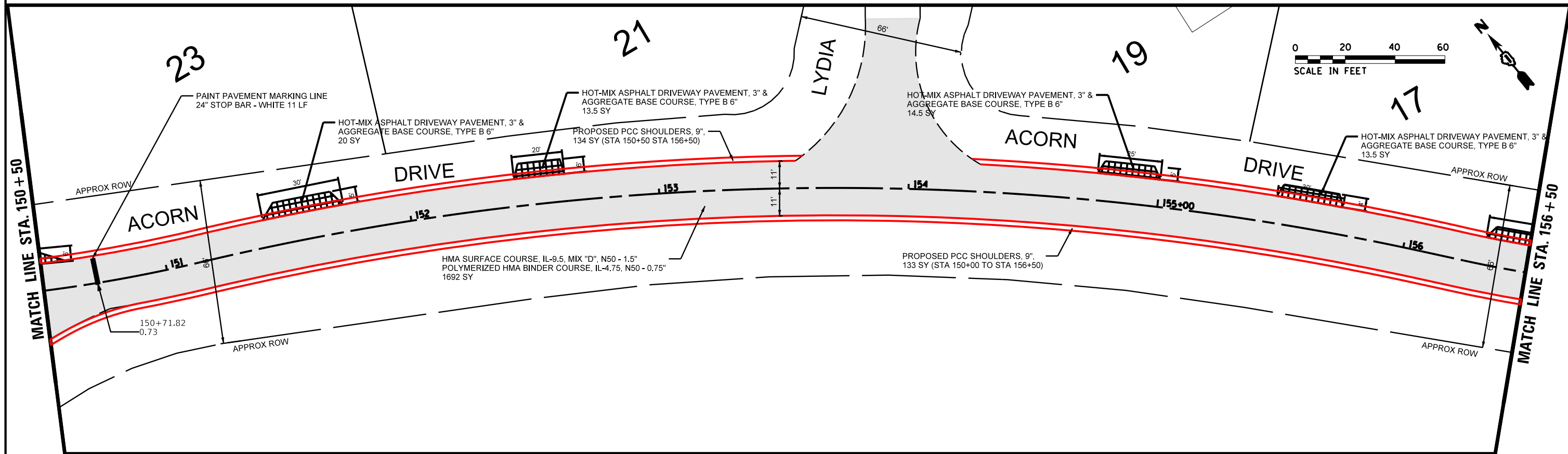
LEGEND	
	PORTLAND CEMENT CONCRETE SHOULDERS, 9"
	SHOULDER REPLACEMENT (SPECIAL)
	-HOT-MIX ASPHALT SURFACE COURSE, IL-9.5, MIX "D", N50 - 1.50" -POLYMERIZED HOT-MIX ASPHALT BINDER COURSE, IL-4.75, N50 - 0.75"
	HOT MIX ASPHALT DRIVEWAY PAVEMENT, 3 INCH
	STORM SEWER, CLASS A, TYPE 1
	PRECAST REINFORCED FLARED END SECTION 15" W/ CONCRETE COLLAR

FILE NAME =	USER NAME = jhouseh	DESIGNED - JEH	REVISED -
N:\HAWTHORNWOODS\240659\Civil\118_PRO05_240659.sht		DRAWN - JEH	REVISED -
Default		CHECKED - LMF	REVISED -
	PLOT DATE = 12/17/2025	DATE -	REVISED -

**STATE OF ILLINOIS  
DEPARTMENT OF TRANSPORTATION**

<b>PROPOSED PLAN</b>			
SCALE: 40'	SHEET	OF SHEETS	STA. TO STA.

F.A.U. RTE.	SECTION	COUNTY	TOTAL SHEETS	SHEET NO.
3515	22-00019-00-RS	LAKE	27	18
<b>CONTRACT NO. 61M34</b>				
ILLINOIS FED. AID PROJECT				



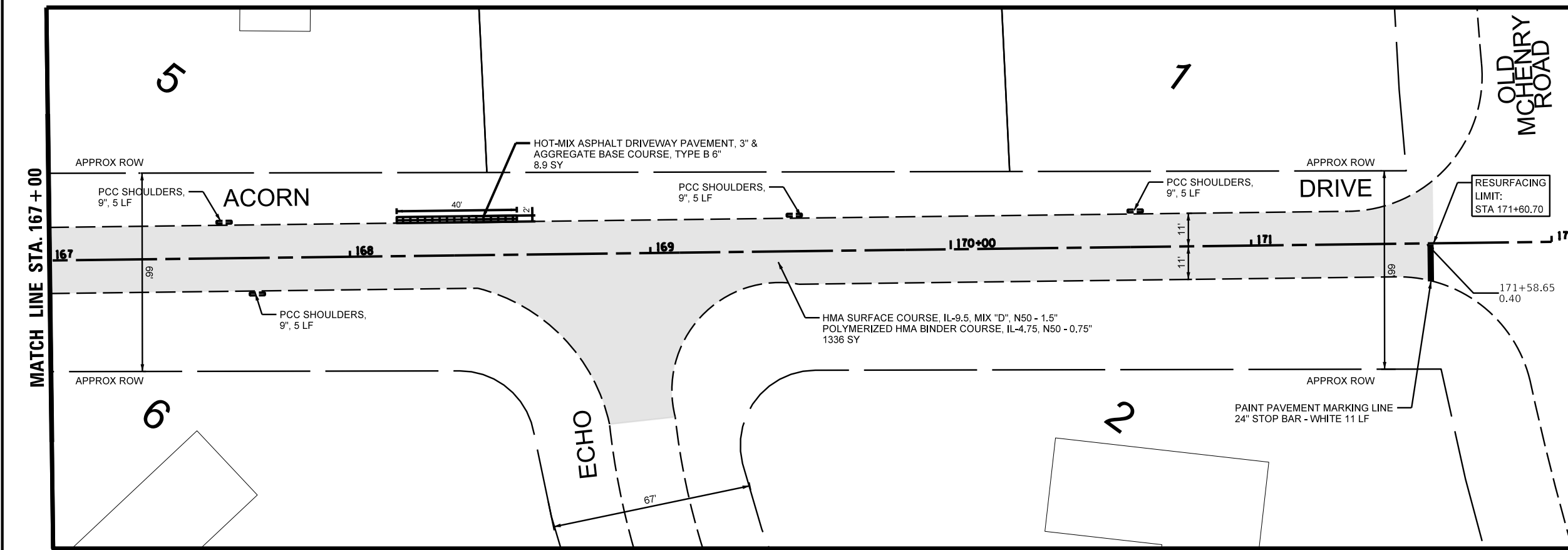
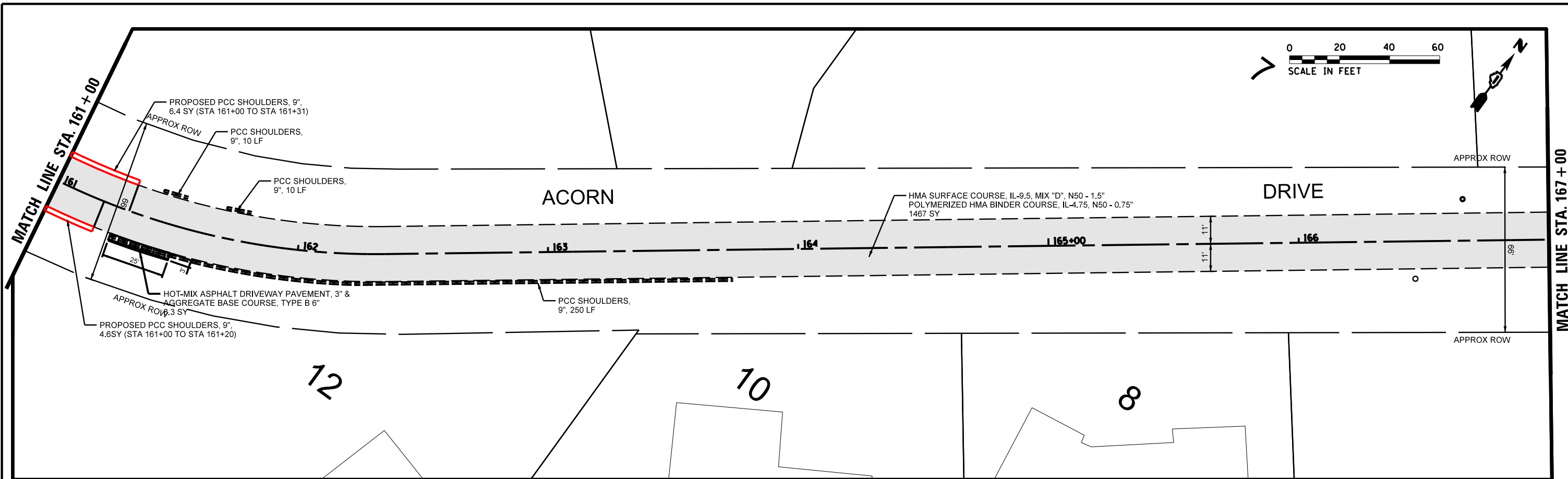
LEGEND	
	PORTLAND CEMENT CONCRETE SHOULDERS, 9"
	SHOULDER REPLACEMENT (SPECIAL)
	-HOT-MIX ASPHALT SURFACE COURSE, IL-9.5, MIX "D", N50 - 1.50" -POLYMERIZED HOT-MIX ASPHALT BINDER COURSE, IL-4.75, N50 - 0.75"
	HOT MIX ASPHALT DRIVEWAY PAVEMENT, 3 INCH
	STORM SEWER, CLASS A, TYPE 1
	PRECAST REINFORCED FLARED END SECTION 15" W/ CONCRETE COLLAR

FILE NAME = N:\HAWTHORNWOODS\240659\Civil\19_PRO06_240659.sht	USER NAME = jhouseh	DESIGNED - JEH	REVISED -
PLOT SCALE = 48'		DRAWN - JEH	REVISED -
PLOT DATE = 12/17/2025		CHECKED - LMF	REVISED -
		DATE -	REVISED -

**STATE OF ILLINOIS  
DEPARTMENT OF TRANSPORTATION**

PROPOSED PLAN	
SCALE: 40'	SHEET OF SHEETS STA. TO STA.

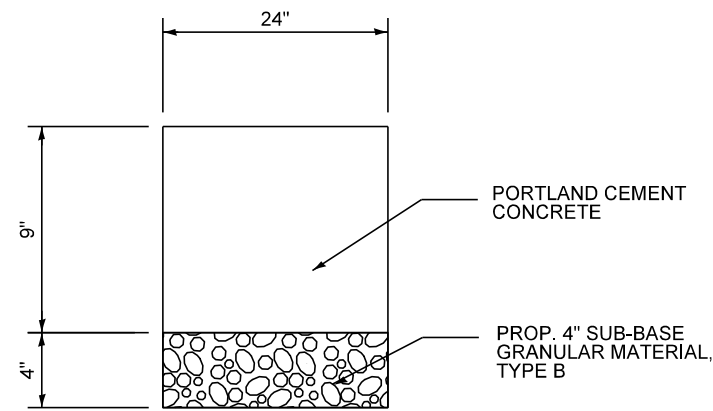
F.A.U. RTE.	SECTION	COUNTY	TOTAL SHEETS	SHEET NO.
3515	22-00019-00-R5	LAKE	27	19
CONTRACT NO. 61M34				
ILLINOIS FED. AID PROJECT				



**LEGEND**

- PORTLAND CEMENT CONCRETE SHOULDERS, 9"
- SHOULDER REPLACEMENT (SPECIAL)
- HOT-MIX ASPHALT SURFACE COURSE, IL-9.5, MIX "D", N50 - 1.50"  
-POLYMERIZED HOT-MIX ASPHALT BINDER COURSE, IL-4.75, N50 - 0.75"
- HOT MIX ASPHALT DRIVEWAY PAVEMENT, 3 INCH
- STORM SEWER, CLASS A, TYPE 1
- PRECAST REINFORCED FLARED END SECTION 15" W/ CONCRETE COLLAR

FILE NAME =	USER NAME = jhouseh	DESIGNED - JEH	REVISED -	<b>STATE OF ILLINOIS DEPARTMENT OF TRANSPORTATION</b>	<b>PROPOSED PLAN</b>			F.A.U. RTE.	SECTION	COUNTY	TOTAL SHEETS	SHEET NO.
N:\HAWTHORNWOODS\240659\Civil\20_PRO07	240659.sht	DRAWN - JEH	REVISED -		3515	22-00019-00-RS	LAKE	27	20			
Default	PLOT SCALE = 48"	CHECKED - LMF	REVISED -		SCALE: 40' SHEET OF SHEETS STA. TO STA.			<b>CONTRACT NO. 61M34</b>				
	PLOT DATE = 12/17/2025	DATE -	REVISED -		ILLINOIS FED. AID PROJECT							



**CONCRETE SHOULDER DETAIL**

**SHOULDER REMOVAL (SPECIAL)**

\*X4404262 - SHOULDER REMOVAL (SPECIAL) (SQ YD)

THIS PAY ITEM PERTAINS TO EXISTING 24"-WIDE SHOULDER REMOVAL AND REPLACEMENT.

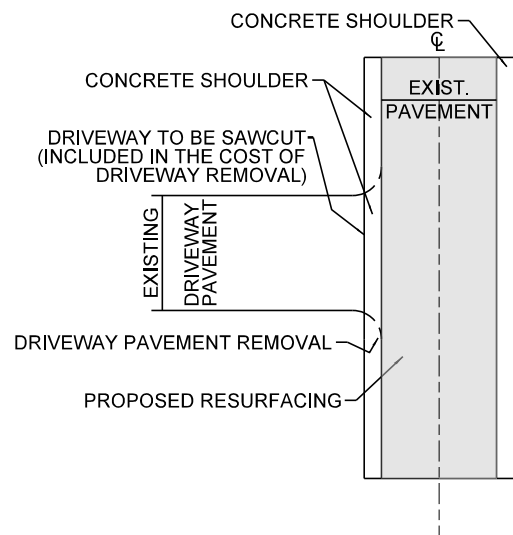
PROPOSED CONCRETE SHOULDER SHALL BE 24" (2') WIDE PCC SHOULDERS AT THE EDGE OF THE EXISTING ASPHALT PAVEMENT. THIS ITEM INCLUDES EXCAVATION, PAVEMENT REMOVAL, 4" GRANULAR SUBBASE, AND BACKFILLING THE SHOULDER AS DETAILED IN THE SPECIAL PROVISION. THE 4" GRANULAR SUBBASE SHALL BE COMPACTED CA-6. THIS WORK SHALL BE COMPLETED IN ACCORDANCE WITH SECTION 483 OF THE STANDARD SPECIFICATIONS, THE TYPICAL SECTIONS INCLUDED HEREIN, THE ABOVE DETAIL, AND IDOT STANDARDS 420001 AND 483001 EXCEPT FOR THE MODIFICATIONS SHOWN IN THE SPECIAL PROVISION FOR "SHOULDER REMOVAL (SPECIAL)".

**PORTLAND CEMENT CONCRETE SHOULDERS, 9"**

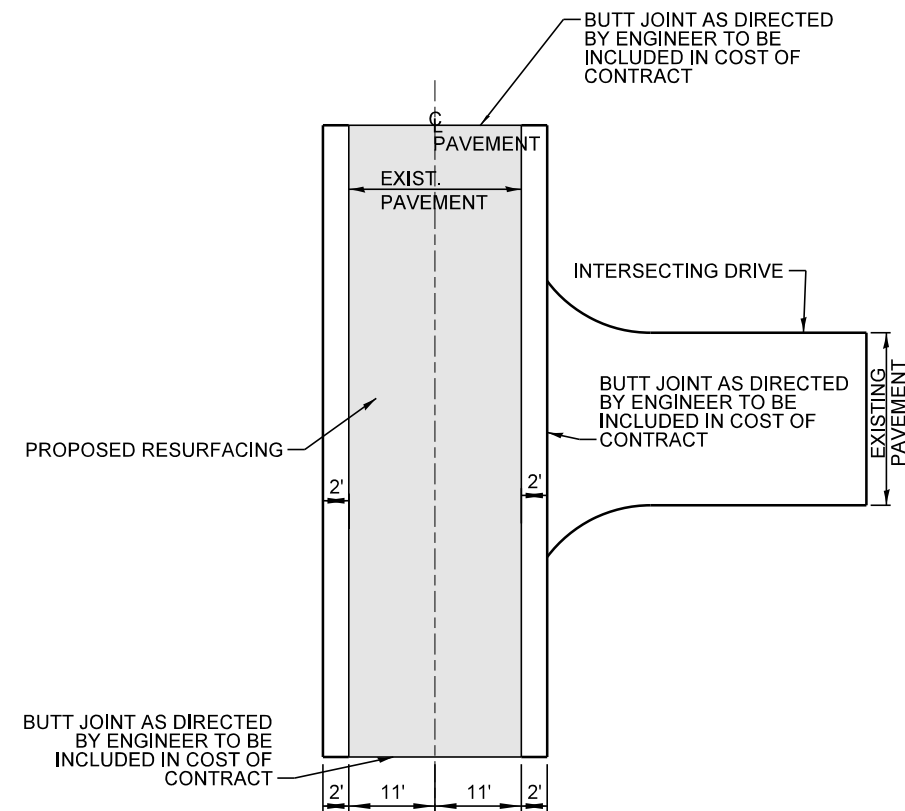
48300400 - PORTLAND CEMENT CONCRETE SHOULDERS, 9" (SQ YD)

THIS PAY ITEM PERTAINS TO INSTALLING NEW 18"-WIDE SHOULDER IN AREAS WHERE NONE EXIST AS DEPICTED IN THE PLANS.

PROPOSED CONCRETE SHOULDER SHALL BE 24" (2') WIDE PCC SHOULDERS AT THE EDGE OF THE EXISTING ASPHALT PAVEMENT IN THE LOCATIONS SHOWN IN THE PLANS. THIS ITEM INCLUDES ALL EXCAVATION REQUIRED TO INSTALL THE PCC SHOULDER AS SHOWN IN THE ABOVE DETAIL. THE BACKFILLING WITH 4" OF SUBBASE GRANULAR MATERIAL (AS SHOWN IN THE TYPICAL SECTIONS AND ABOVE DETAIL), SHALL BE PAID FOR SEPARATELY UNDER SUBBASE GRANULAR MATERIAL, TYPE B 4" (31101200). THE 4" GRANULAR SUBBASE SHALL BE COMPACTED CA-6. THIS WORK SHALL BE COMPLETED IN ACCORDANCE WITH SECTION 483 OF THE STANDARD SPECIFICATIONS, THE TYPICAL SECTIONS INCLUDED HEREIN, AND IDOT STANDARDS 420001 AND 483001.



**DRIVEWAY INTERSECTIONS**



**CONCRETE SHOULDER INSTALLATION LAYOUT**

CONCRETE SHOULDER WILL BE CONSTRUCTED TO MEET THE EXISTING STREET GRADE ON ALL STREETS.

FILE NAME =	USER NAME = jhouseh	DESIGNED - JEH	REVISED -
N:\HAWTHORNWOODS\240659\Civil\21_DET01_240659.sht		DRAWN - JEH	REVISED -
	PLOT SCALE = 60'	CHECKED - LMF	REVISED -
Default	PLOT DATE = 2/23/2026	DATE -	REVISED -

STATE OF ILLINOIS  
DEPARTMENT OF TRANSPORTATION

CONSTRUCTION DETAILS

SCALE: N.T.S. SHEET OF SHEETS STA. TO STA.

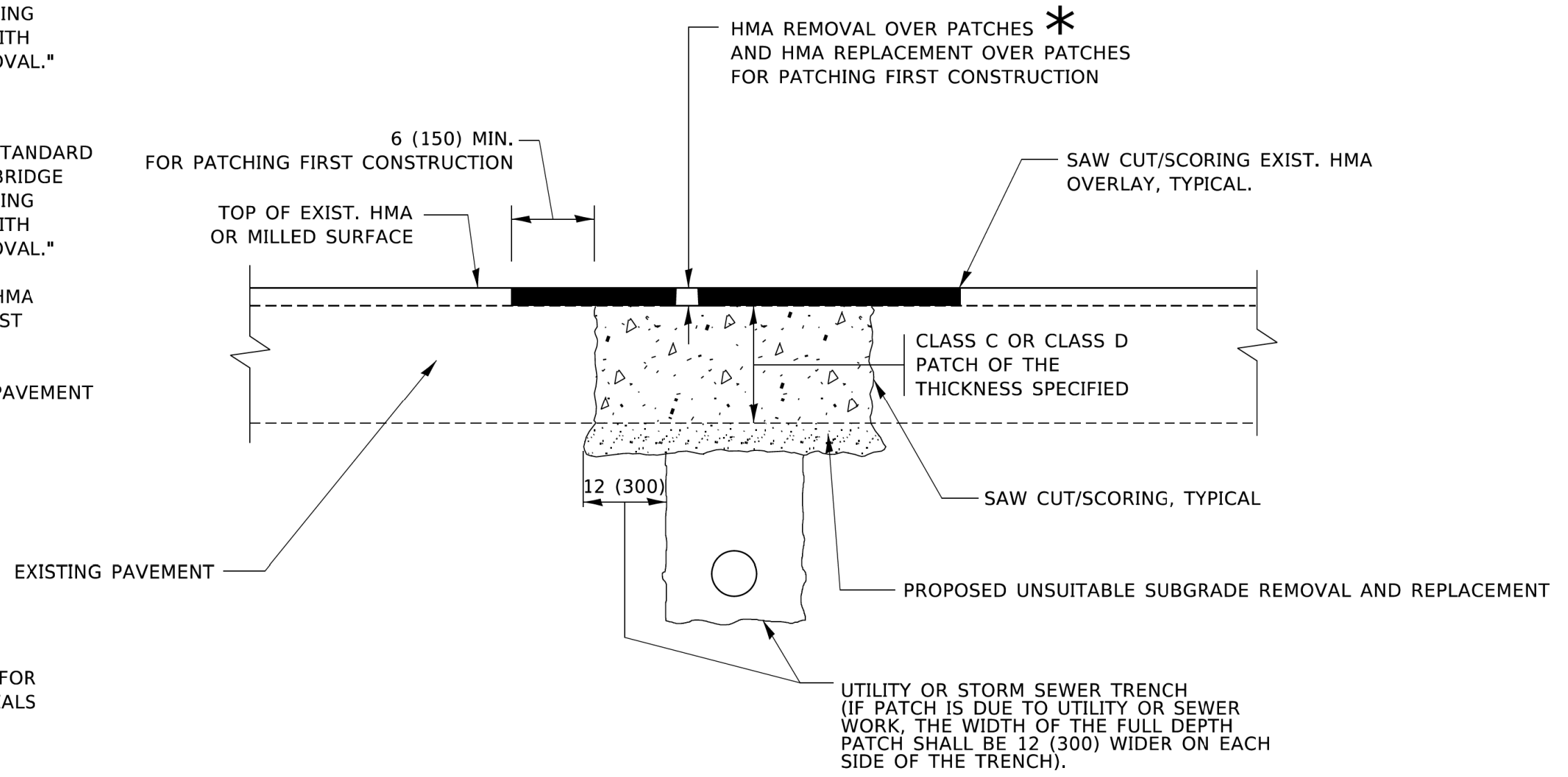
F.A.U. RTE.	SECTION	COUNTY	TOTAL SHEETS	SHEET NO.
3515	22-00019-00-RS	LAKE	27	21
CONTRACT NO. 61M34				
ILLINOIS FED. AID PROJECT				

**METHOD OF MEASUREMENT**

REFER TO SECTION 442 OF THE STANDARD SPECIFICATIONS FOR ROAD AND BRIDGE CONSTRUCTION AND THE RECURRING SPECIAL PROVISION "PATCHING WITH HOT-MIX ASPHALT OVERLAY REMOVAL."

**BASIS OF PAYMENT**

1. REFER TO SECTION 442 OF THE STANDARD SPECIFICATIONS FOR ROAD AND BRIDGE CONSTRUCTION AND THE RECURRING SPECIAL PROVISION "PATCHING WITH HOT-MIX ASPHALT OVERLAY REMOVAL."
2. SAW CUT/SCORING OF EXISTING HMA OVERLAY IS INCLUDED IN THE COST OF PAVEMENT PATCHING.
3. SAW CUT/SCORING OF EXISTING PAVEMENT IS INCLUDED IN THE COST OF PAVEMENT PATCHING.



\* SEE TYPICAL SECTIONS FOR THICKNESS AND MATERIALS

**SEQUENCE OF CONSTRUCTION (PATCHING FIRST)**

1. REMOVE THE EXISTING HMA MATERIAL OVER THE AREA TO BE PATCHED.
2. REMOVE AND REPLACE WITH CLASS C OR D PATCH.
3. REPLACE HMA MATERIAL OVER THE AREA TO BE PATCHED.

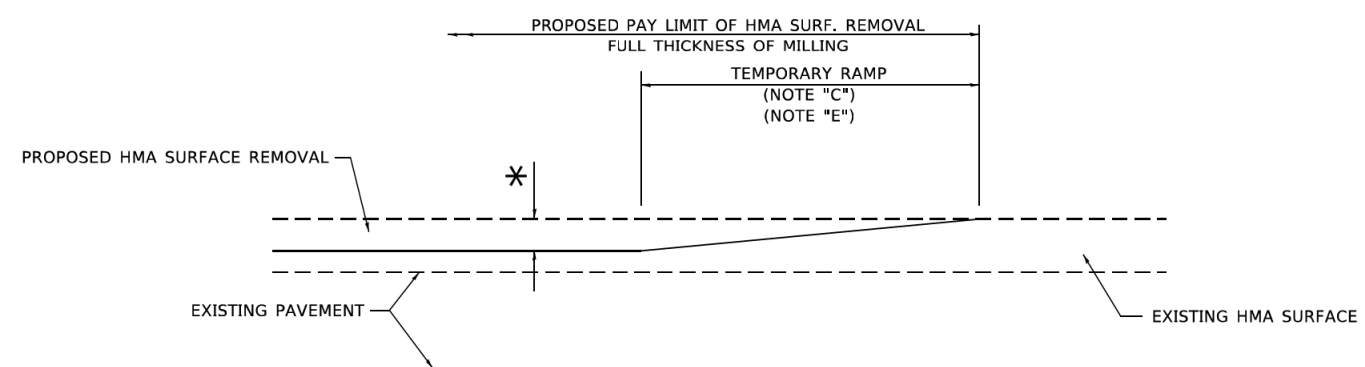
**SEQUENCE OF CONSTRUCTION (MILLING FIRST)**

1. MILL HMA FIRST IF THERE IS AT LEAST 4½ INCHES OR MORE OF HMA MATERIAL ON TOP OF THE EXISTING PAVEMENT OR IF THE PAVEMENT IS FULL DEPTH HMA. A MINIMUM OF 2 INCHES OF HMA MATERIAL SHALL BE IN PLACE AFTER MILLING.
2. REMOVE AND REPLACE WITH FULL DEPTH CLASS D PATCHES TO TOP OF MILLED SURFACE.

ALL DIMENSIONS ARE IN INCHES (MILLIMETERS) UNLESS OTHERWISE SHOWN.

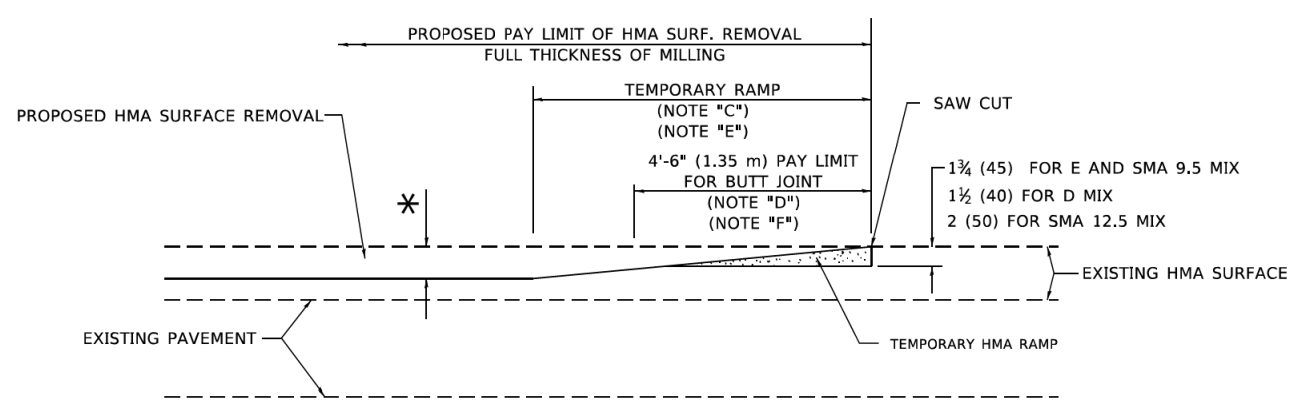
MODEL: Default  
FILE: \\w:\p\illinois\w\_bentley.com\p\illinois\DOT\_offices\dot\11\projects\bd-22\31\CAD\DATA\CAD\sheet\022.dgn

USER NAME = Lawrence,DeManche	DESIGNED - R. SHAH	REVISED - R. BORO 01-01-07	<b>STATE OF ILLINOIS DEPARTMENT OF TRANSPORTATION</b>	<b>PAVEMENT PATCHING FOR HMA SURFACED PAVEMENT</b>		F.A.U. RTE. <b>3515</b>	SECTION <b>22-00019-00-RS</b>	COUNTY <b>LAKE</b>	TOTAL SHEETS <b>27</b>	SHEET NO. <b>22</b>
PLOT SCALE = 100.0000' / in.	CHECKED -	REVISED - K. ENG 10-27-08				SCALE: NONE		SHEET 1 OF 1 SHEETS	STA. TO STA.	CONTRACT NO. <b>61M34</b>
PLOT DATE = 11/18/2022	DATE - 10-25-94	REVISED - K. SMITH 11-18-22						ILLINOIS FED. AID PROJECT		



**MILLED TEMPORARY RAMP**  
(FOR BUTT JOINT AND HMA TAPER SEE DETAIL BELOW)

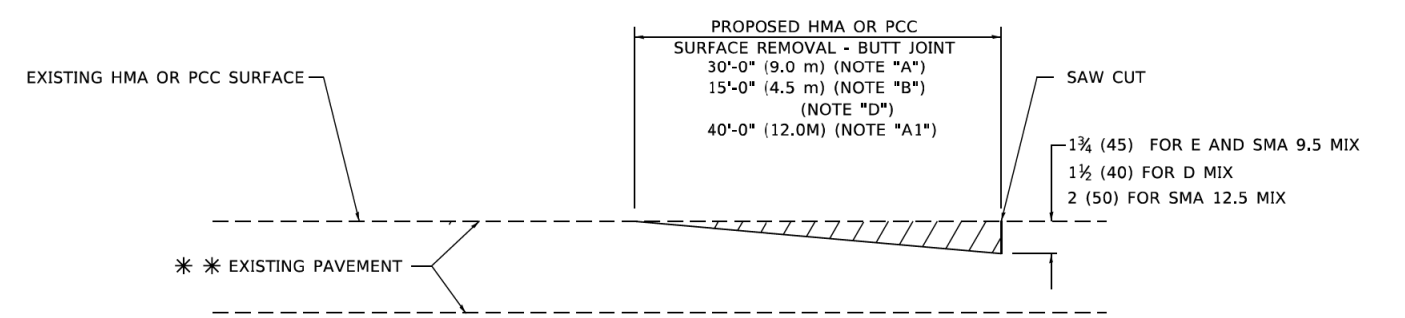
**OPTION 1**



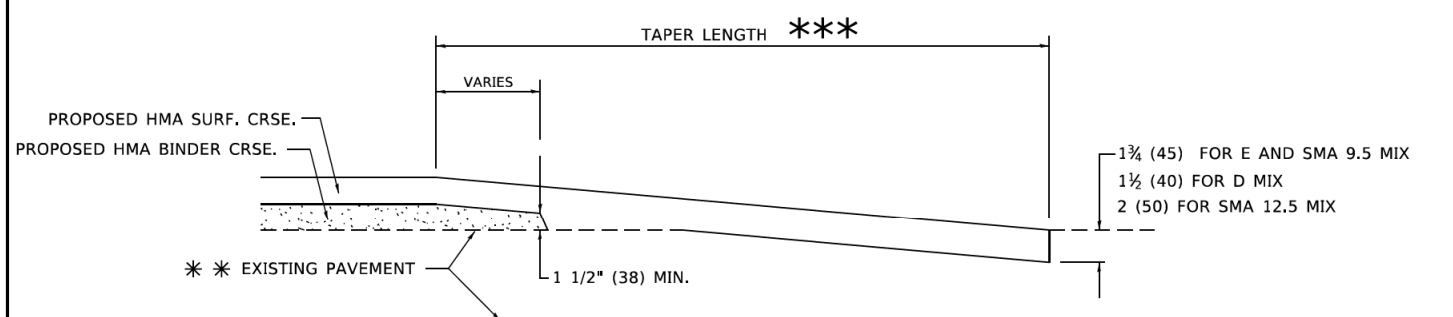
**HMA CONSTRUCTED TEMPORARY RAMP**  
(FOR BUTT JOINT AND HMA TAPER SEE DETAIL BELOW)

**OPTION 2**

**TYPICAL TEMPORARY RAMP**



**BUTT JOINT DETAIL**



**HMA TAPER DETAIL**

**TYPICAL BUTT JOINT AND HMA TAPER FOR RESURFACING ONLY**

\*\*\* PC CONCRETE, HMA OR HMA RESURFACED PAVEMENT.

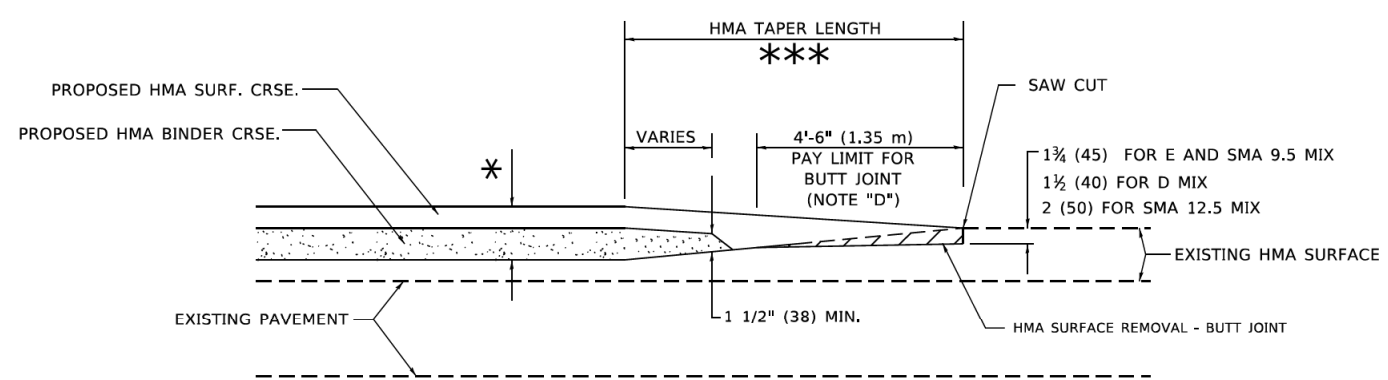
**GENERAL NOTES**

- A. MAINLINE ARTERIAL ROADWAYS AND MAJOR SIDE ROADS.
- A1. INTERSTATES
- B. MINOR SIDE ROADS.
- C. THE TEMP. RAMP SHALL BE CONSTRUCTED IMMEDIATELY UPON REMOVAL OF THE EXISTING HMA SURFACE.
- D. THE BUTT JOINT SHALL BE CONSTRUCTED IMMEDIATELY PRIOR TO PLACING THE PROPOSED HMA COURSES.
- E. TAPER THE TEMP. RAMP AT A RATE OF 3' - 4" (1.02m) PER 1 INCH (25 mm) OF MILLING THICKNESS.  
\* SEE TYPICAL SECTIONS FOR MILLING THICKNESS.
- F. SEE ARTICLE 406.08 AND 406.14 OF THE STANDARD SPECIFICATIONS FOR "HMA AND/OR PCC SURFACE REMOVAL, BUTT JOINT".  
\*\*\* 20'-0" (6.1 m) PER 1 (25) RESURFACING (NOTE "A")  
10'-0" (3.0 m) PER 1 (25) RESURFACING (NOTE "B")

**BASIS OF PAYMENT**

- 1. THE BUTT JOINT WILL BE PAID FOR AT THE CONTRACT UNIT PRICE PER SQUARE YARD (SQUARE METER) FOR "HOT-MIX ASPHALT SURFACE REMOVAL - BUTT JOINT" OR FOR "PORTLAND CEMENT CONCRETE SURFACE REMOVAL- BUTT JOINT".
- 2. THE TEMPORARY RAMP AND SAW CUT SHALL BE INCLUDED IN THE UNIT COST FOR HMA OR PCC SURFACE REMOVAL-BUTT JOINT.

ALL DIMENSIONS ARE IN INCHES (MILLIMETERS) UNLESS OTHERWISE SHOWN.



**BUTT JOINT AND HMA TAPER**

**TYPICAL BUTT JOINT AND HMA TAPER FOR MILLING AND RESURFACING**

MODEL: Default  
FILE: \\wae-pxw-bentley.com\pwwd01\Documents\DOT\_Offices\Bentley\_1\Projects\Bentley\_1\Projects\Bentley\_1\CAD\Drawings\CAD\Drawings\Bentley\_1.dgn

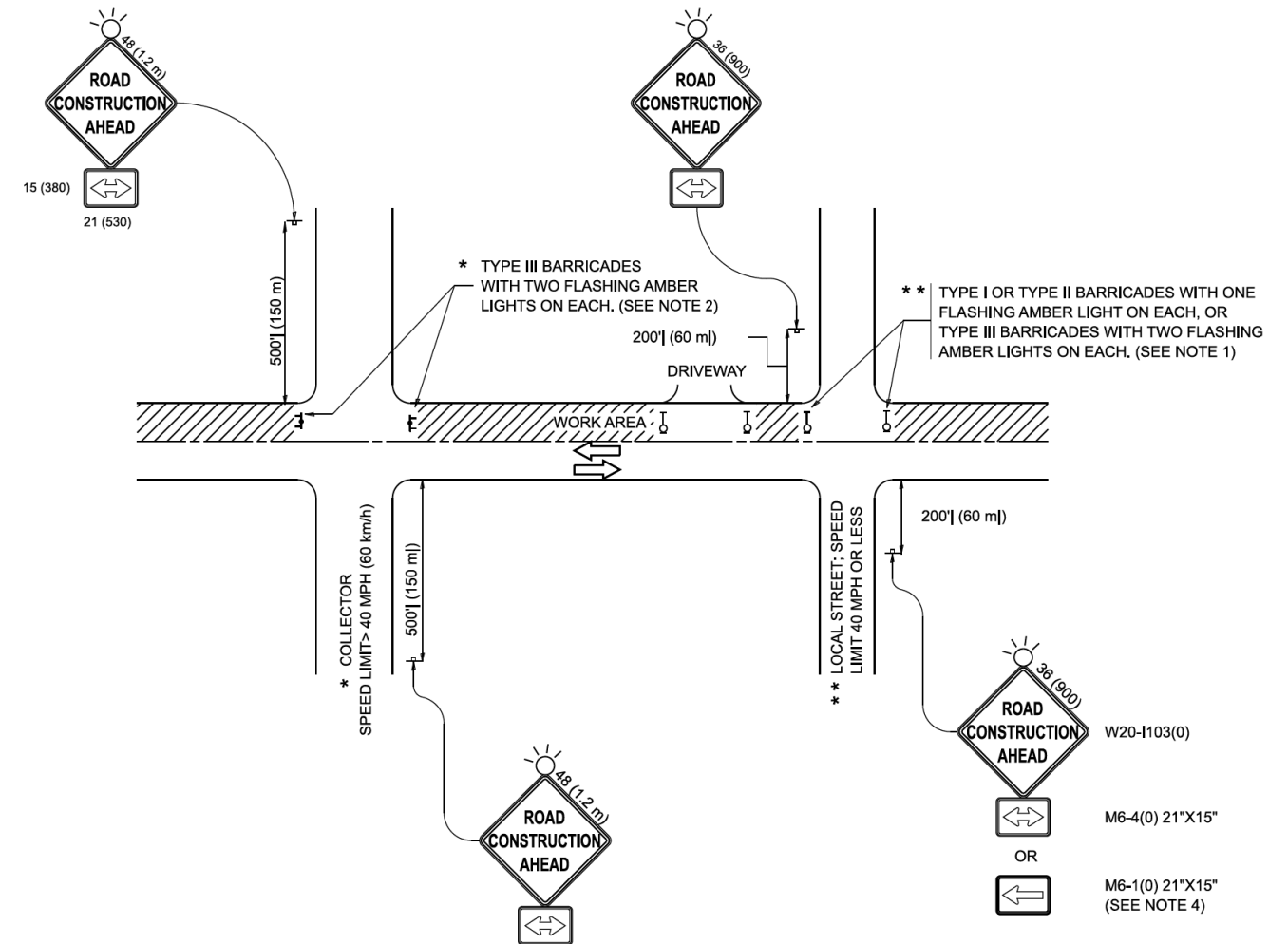
USER NAME = Lawrence,DeManche	DESIGNED - M. DE YONG	REVISED - A. ABBAS 03-21-97
	DRAWN -	REVISED - M. GOMEZ 04-06-01
PLOT SCALE = 100.0000' / in.	CHECKED -	REVISED - R. BORO 01-01-07
PLOT DATE = 11/18/2022	DATE - 06-13-90	REVISED - K. SMITH 11-18-22

STATE OF ILLINOIS  
DEPARTMENT OF TRANSPORTATION

SCALE: NONE		SHEET 1 OF 1 SHEETS		STA. TO STA.	
-------------	--	---------------------	--	--------------	--

BUTT JOINT AND  
HMA TAPER DETAILS

F.A.U. RTE.	SECTION	COUNTY	TOTAL SHEETS	SHEET NO.
3515	22-00019-00-RS	LAKE	27	23
BD400-05 BD-32		CONTRACT NO. 61M34		
ILLINOIS FED. AID PROJECT				



**NOTES:**

1. SIDE ROAD WITH A SPEED LIMIT OF 40 MPH (60 km/h) OR LESS AS SHOWN ON THE DRAWING AND AS DIRECTED BY THE ENGINEER:
  - a) ONE "ROAD CONSTRUCTION AHEAD" SIGN 36 x 36 (900x900) WITH A FLASHER MOUNTED ON IT APPROXIMATELY 200' (60 m) IN ADVANCE OF THE MAIN ROUTE.
  - b) THE CLOSED PORTION OF THE MAIN ROUTE SHALL BE PROTECTED BY BLOCKING WITH TYPE I, TYPE II OR TYPE III BARRICADES, 1/3 OF THE CROSS SECTION OF THE CLOSED PORTION.
2. SIDE ROAD WITH A SPEED LIMIT GREATER THAN 40 MPH (60 km/h) AS SHOWN ON THE DRAWING AND AS DIRECTED BY THE ENGINEER:
  - a) ONE "ROAD CONSTRUCTION AHEAD" SIGN 48 x 48 (1.2 m x 1.2 m) WITH A FLASHER MOUNTED ON IT APPROXIMATELY 500' (150 m) IN ADVANCE OF THE MAIN ROUTE.
  - b) THE CLOSED PORTION OF THE MAIN ROUTE SHALL BE PROTECTED BY BLOCKING WITH TYPE III BARRICADES, 1/2 OF THE CROSS SECTION OF THE CLOSED PORTION.
3. CONES MAY BE SUBSTITUTED FOR BARRICADES OR DRUMS AT HALF THE SPACING DURING DAY OPERATIONS. CONES SHALL BE A MINIMUM OF 28 (710) IN HEIGHT.
4. WHEN THE SIDE ROAD LIES BETWEEN THE BEGINNING OF THE MAINLINE SIGNING AND THE WORK ZONE, A SINGLE HEADED ARROW (M6-1) SHALL BE USED IN LIEU OF THE DOUBLE HEADED ARROW (M6-4).
5. WHEN WORK IS BEING PERFORMED ON A SIDE ROAD OR DRIVEWAY, FOLLOW THE APPLICABLE STANDARD(S). THE DIRECTIONAL ARROW (M6-1 OR M6-4) SHALL BE COVERED OR REMOVED WHEN NO LONGER CONSISTENT WITH THE TRAFFIC CONTROL SET-UP.
6. ADVANCE WARNING SIGNS ARE TO BE OMITTED ON DRIVEWAYS UNLESS OTHERWISE SPECIFIED IN THE PLANS OR BY THE ENGINEER.
7. THE TRAFFIC CONTROL AND PROTECTION FOR SIDE ROADS, INTERSECTIONS, AND DRIVEWAYS SHALL BE INCLUDED IN THE COST OF SPECIFIED TRAFFIC CONTROL STANDARDS OR ITEMS.

All dimensions are in inches (millimeters) unless otherwise shown.

MODEL: TC-10 (Sheet)  
FILE NAME: c:\p\work\lawrence.demanche\151515\TC-10.dgn

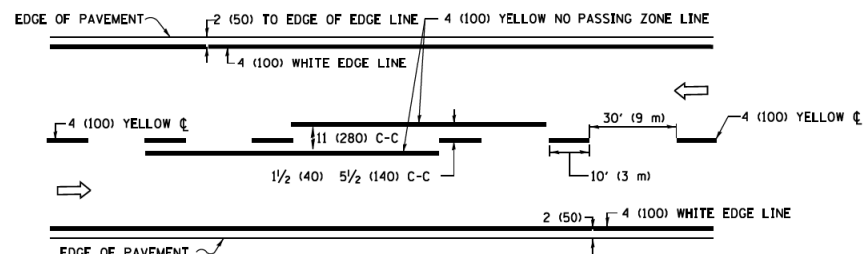
USER NAME = lawrence.demanche	DESIGNED - L.H.A.	REVISED - T. RAMMACHER 01-06-00
PLOT SCALE = 0.08333317 / in.	CHECKED -	REVISED - A. SCHUETZE 07-01-13
PLOT DATE = 10/2/2025	DATE - 06-89	REVISED - A. SCHUETZE 09-15-06
		REVISED - D. SENDERAK 05-03-25

**STATE OF ILLINOIS  
DEPARTMENT OF TRANSPORTATION**

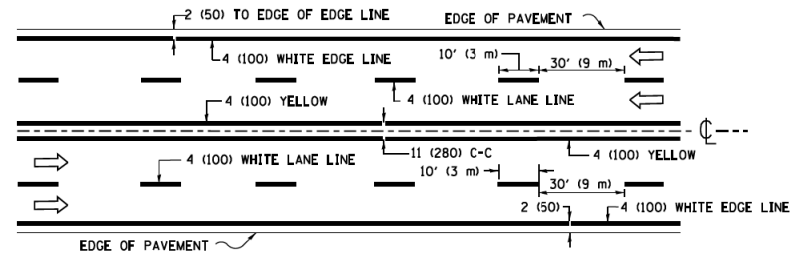
**TRAFFIC CONTROL AND PROTECTION FOR  
SIDE ROADS, INTERSECTIONS, AND DRIVEWAYS**

SCALE: SHEET OF SHEETS STA. TO STA.

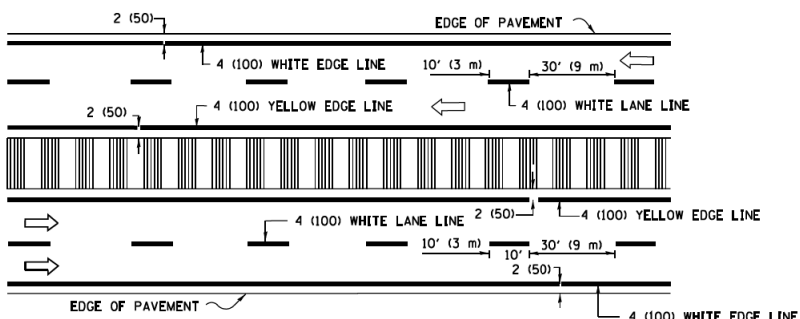
F.A. RTE.	SECTION	COUNTY	TOTAL SHEETS	SHEET NO.
3515	22-00019-00-RS	LAKE	27	24
TC-10			CONTRACT NO. 61W34	
ILLINOIS FED. AID PROJECT				



**2-LANE ROADWAY**

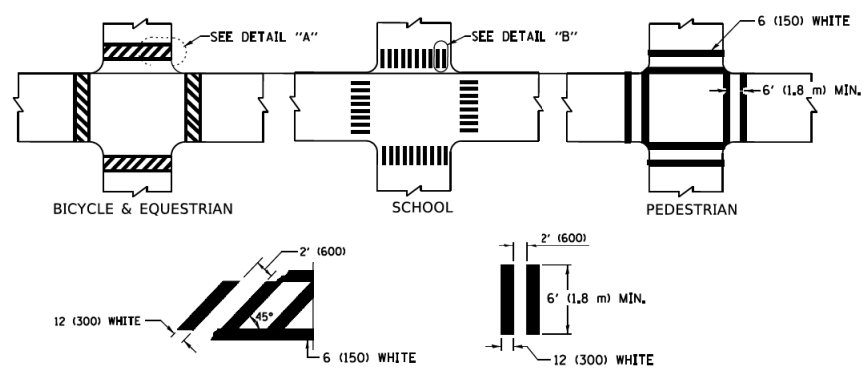


**MULTI-LANE UNDIVIDED**



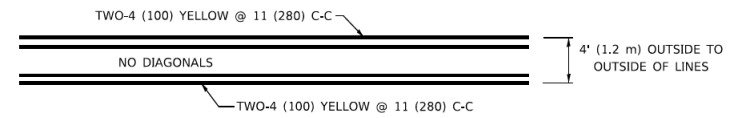
**MULTI-LANE DIVIDED WITH MEDIAN**

**TYPICAL LANE AND EDGE LINE MARKING**

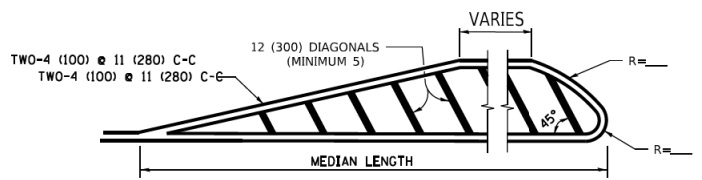


**TYPICAL CROSSWALK MARKING**

\* MARKINGS SHALL BE INSTALLED PARALLEL TO THE CENTERLINE OF THE ROAD WHICH IT CROSSES

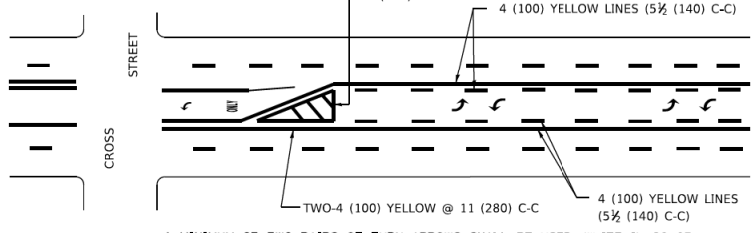


**4' (1.2 m) WIDE MEDIANS ONLY**



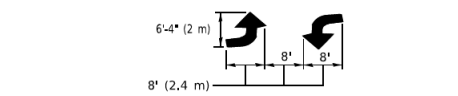
**MEDIANS OVER 4' (1.2 m) WIDE**

DIAGONAL LINE SPACING: 50' (15 m) C-C (LESS THAN 30MPH (50 km/h))  
75' (25 m) C-C 30MPH (50 km/h) TO 45MPH (70 km/h)  
150' (45 m) C-C (MORE THAN 45MPH (70 km/h))



**MEDIAN WITH TWO-WAY LEFT TURN LANE TYPICAL PAINTED MEDIAN MARKING**

A MINIMUM OF TWO PAIRS OF TURN ARROWS SHALL BE USED, WHITE IN COLOR. ADDITIONAL PAIRS SHALL BE PLACED AT 200' (60 m) TO 300' (90 m) INTERVALS.



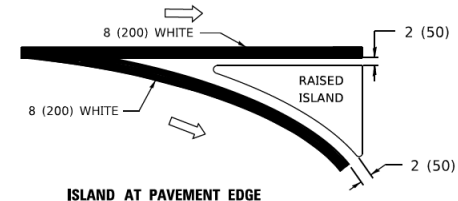
**TYPICAL LEFT (OR RIGHT) TURN LANE**

**TYPICAL TURN LANE MARKING**

FULL SIZE LETTERS 8' (2.4 m) AND ARROWS SHALL BE USED.  
AREA = 15.6 SQ. FT. (1.5 m<sup>2</sup>) ONLY AREA = 20.8 SQ. FT. (1.9 m<sup>2</sup>)  
\* TURN LANES IN EXCESS OF 400' (120 m) IN LENGTH MAY HAVE AN ADDITIONAL SET OF ARROW - \*ONLY\* INSTALLED MIDWAY BETWEEN THE OTHER TWO SETS OF ARROW - \*ONLY\*.

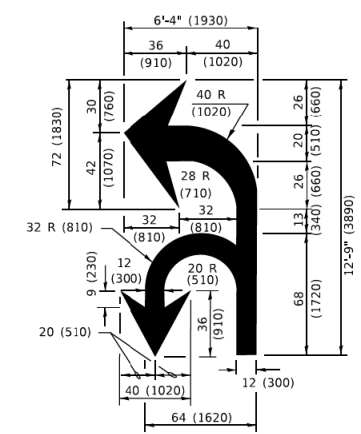


**ISLAND OFFSET FROM PAVEMENT EDGE**

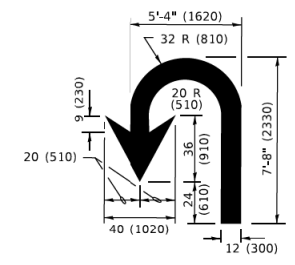


**ISLAND AT PAVEMENT EDGE**

**TYPICAL ISLAND MARKING**



**COMBINATION LEFT AND U-TURN**



**U-TURN**

**LANE REDUCTION TRANSITION**  
\* LANE REDUCTION ARROWS REQUIRED AT SPEEDS OF 45 MPH OR GREATER OR WHEN SPECIFIED IN PLANS.

D(FT)	SPEED LIMIT
345	30
425	35
500	40
580	45
665	50
750	55

TYPE OF MARKING	WIDTH OF LINE	PATTERN	COLOR	SPACING / REMARKS
CENTERLINE ON 2 LANE PAVEMENT	4 (100)	SKIP-DASH	YELLOW	10' (3 m) LINE WITH 30' (9 m) SPACE
CENTERLINE ON MULTI-LANE UNDIVIDED PAVEMENT	2 @ 4 (100)	SOLID	YELLOW	11 (280) C-C
NO PASSING ZONE LINES: FOR ONE DIRECTION FOR BOTH DIRECTIONS	4 (100) 2 @ 4 (100)	SOLID SOLID	YELLOW YELLOW	5 1/2 (140) C-C FROM SKIP-DASH CENTERLINE 11 (280) C-C OMIT SKIP-DASH CENTERLINE BETWEEN
LANE LINES	4 (100) 5 (125) ON FREEWAYS	SKIP-DASH SKIP-DASH	WHITE WHITE	10' (3 m) LINE WITH 30' (9 m) SPACE
DOTTED LINES (EXTENSIONS OF CENTER, LANE OR TURN LANE MARKINGS)	SAME AS LINE BEING EXTENDED	SKIP-DASH	SAME AS LINE BEING EXTENDED	2' (600) LINE WITH 6' (1.8 m) SPACE
EDGE LINES	4 (100)	SOLID	YELLOW-LEFT WHITE-RIGHT	OUTLINE MEDIANS IN YELLOW
TURN LANE MARKINGS	6 (150) LINE: FULL SIZE LETTERS & SYMBOLS (8' (2.4m))	SOLID	WHITE	SEE TYPICAL TURN LANE MARKING DETAIL
TWO WAY LEFT TURN MARKING	2 @ 4 (100) EACH DIRECTION 8' (2.4m) LEFT ARROW	SKIP-DASH AND SOLID IN PAIRS	YELLOW WHITE	10' (3 m) LINE WITH 30' (9 m) SPACE FOR SKIP-DASH; 5 1/2 (140) C-C BETWEEN SOLID LINE AND SKIP-DASH LINE SEE TYPICAL TWO-WAY LEFT TURN MARKING DETAIL
CROSSWALK LINES (PEDESTRIAN) A. DIAGONALS (BIKE & EQUESTRIAN) B. LONGITUDINAL BARS (SCHOOL)	2 @ 6 (150) 12 (300) @ 45° 12 (300) @ 90°	SOLID SOLID SOLID	WHITE WHITE WHITE	NOT LESS THAN 6' (1.8 m) APART 2' (600) APART 2' (600) APART SEE TYPICAL CROSSWALK MARKING DETAILS.
STOP LINES	24 (600)	SOLID	WHITE	PLACE 4' (1.2 m) IN ADVANCE OF AND PARALLEL TO CROSSWALK, IF PRESENT. OTHERWISE, PLACE AT DESIRED STOPPING POINT. PARALLEL TO CROSSROAD CENTERLINE, WHERE POSSIBLE.
PAINTED MEDIANS	2 @ 4 (100) WITH 12 (300) DIAGONALS @ 45° NO DIAGONALS USED FOR 4' (1.2 m) WIDE MEDIANS	SOLID	YELLOW; TWO WAY TRAFFIC WHITE; ONE WAY TRAFFIC	11 (280) C-C FOR THE DOUBLE LINE SEE TYPICAL PAINTED MEDIAN MARKING.
GORE MARKING AND CHANNELIZING LINES	8 (200) WITH 12 (300) DIAGONALS @ 45°	SOLID	WHITE	DIAGONALS: 15' (4.5 m) C-C (LESS THAN 30MPH (50 km/h)) 20' (6 m) C-C 30MPH (50 km/h) TO 45MPH (70 km/h) 30' (9 m) C-C (OVER 45MPH (70 km/h))
RAILROAD CROSSING	24 (600) TRANSVERSE LINES: *RR* IS 6' (1.8 m) LETTERS; 16 (400) LINE FOR *X*	SOLID	WHITE	SEE STATE STANDARD 780001 AREA OF: *R*=3.6 SQ. FT. (0.33 m <sup>2</sup> ) EACH *X*=54.0 SQ. FT. (5.0 m <sup>2</sup> )
SHOULDER DIAGONALS (REQUIRED FOR SHOULDERS ≥ 8')	12 (300) @ 45°	SOLID	WHITE - RIGHT YELLOW - LEFT	50' (15 m) C-C (LESS THAN 30MPH (50 km/h)) 75' (25 m) C-C (30 MPH (50 km/h) TO 45MPH (70 km/h)) 150' (45 m) C-C (OVER 45MPH (70 km/h))
U TURN ARROW	SEE DETAIL	SOLID	WHITE	16.3 SF
2 ARROW COMBINATION LEFT AND U TURN	SEE DETAIL	SOLID	WHITE	30.4 SF

FOR FURTHER DETAILS ON PAVEMENT MARKING REFER TO STANDARD SPECIFICATIONS FOR ROAD AND BRIDGE CONSTRUCTION AND STATE STANDARD 780001.

All dimensions are in Inches (millimeters) unless otherwise shown.

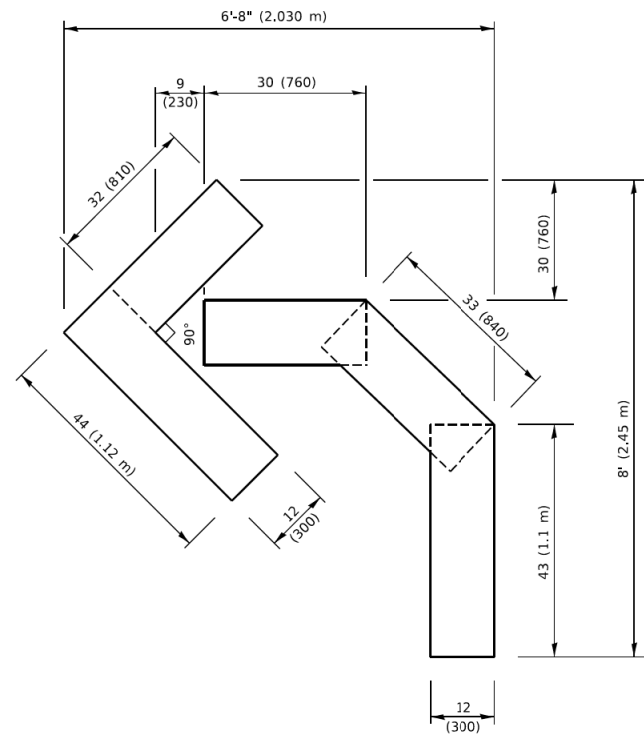
MODEL: Default FILE: \\p01010484\FB\DOT\Documents\DOT - Offices\District 1\Projects\Dist5\02723231\CADD\Dist\CD\shhets\133.dgn

USER NAME = footemj	DESIGNED - EVERS	REVISED - C. JUCIUS 09-09-09
PLOT SCALE = 50.0000" / in.	DRAWN -	REVISED - C. JUCIUS 07-01-13
PLOT DATE = 3/4/2019	CHECKED -	REVISED - C. JUCIUS 12-21-15
	DATE - 03-19-90	REVISED - C. JUCIUS 04-12-16

**STATE OF ILLINOIS  
DEPARTMENT OF TRANSPORTATION**

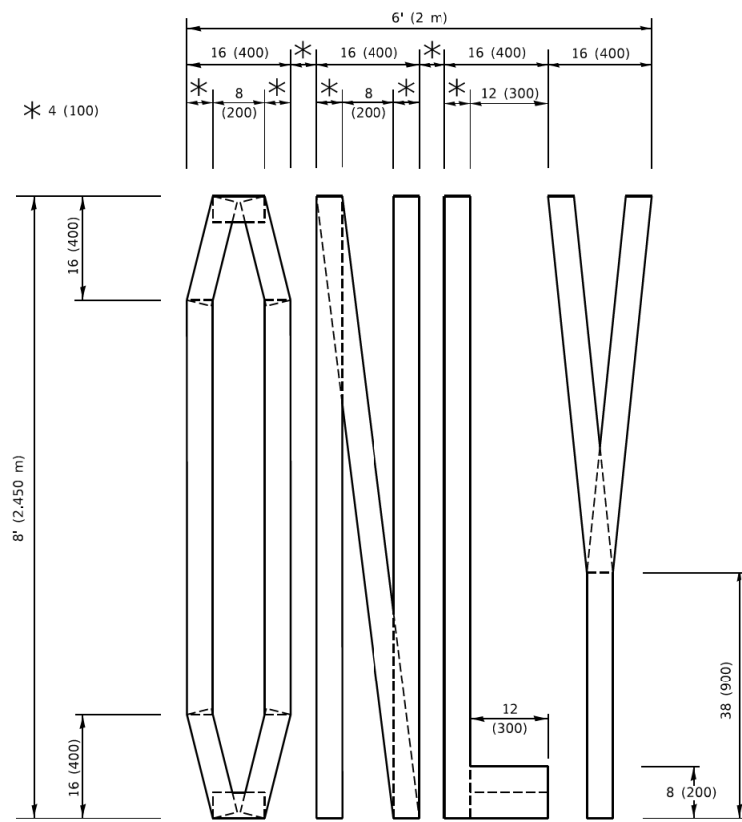
<b>DISTRICT ONE</b>		F.A.U. RTE. <b>3515</b>	SECTION <b>22-00019-00-RS</b>	COUNTY <b>LAKE</b>	TOTAL SHEETS <b>27</b>	SHEET NO. <b>25</b>
<b>TYPICAL PAVEMENT MARKINGS</b>		<b>TC-13</b>		CONTRACT NO. <b>61M34</b>		
SCALE: NONE	SHEET 1 OF 2 SHEETS	STA. _____	TO STA. _____			

ILLINOIS	FED. AID PROJECT
----------	------------------



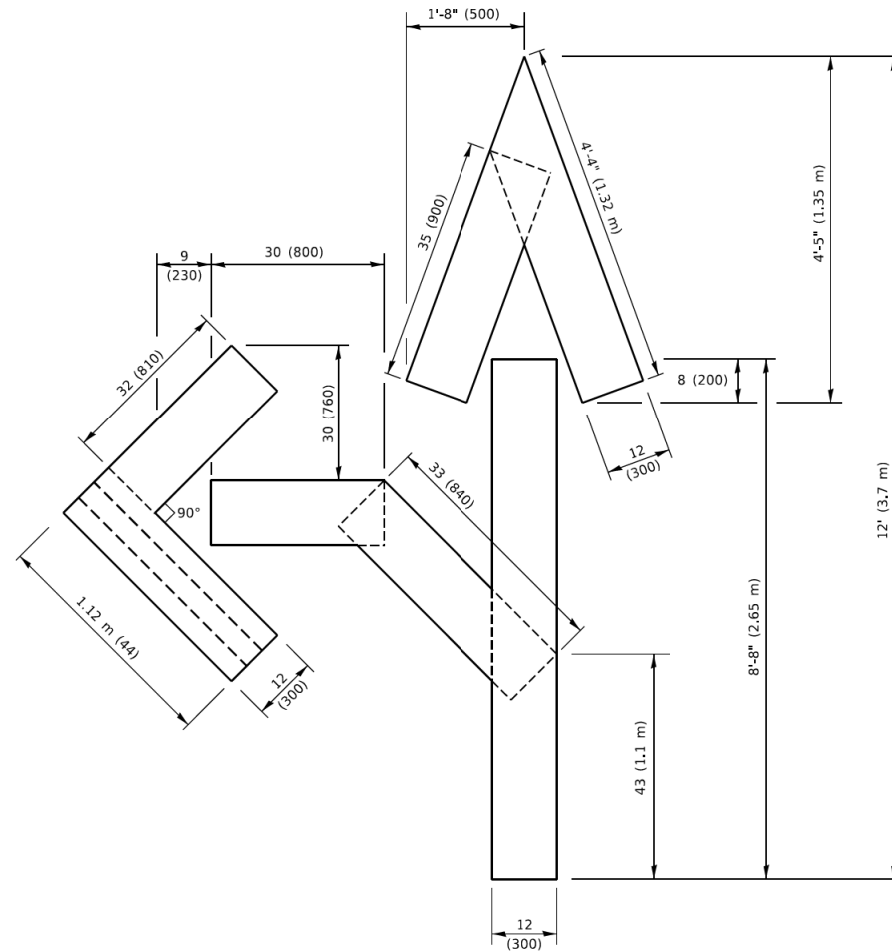
**QUANTITY**

4 (100) LINE = 45.5 ft. (13.9 m)  
15.2 sq. ft. (1.41 sq. m)



**QUANTITY**

4 (100) LINE = 64.1 ft. (19.5 m)  
21.4 sq. ft. (1.99 sq. m)

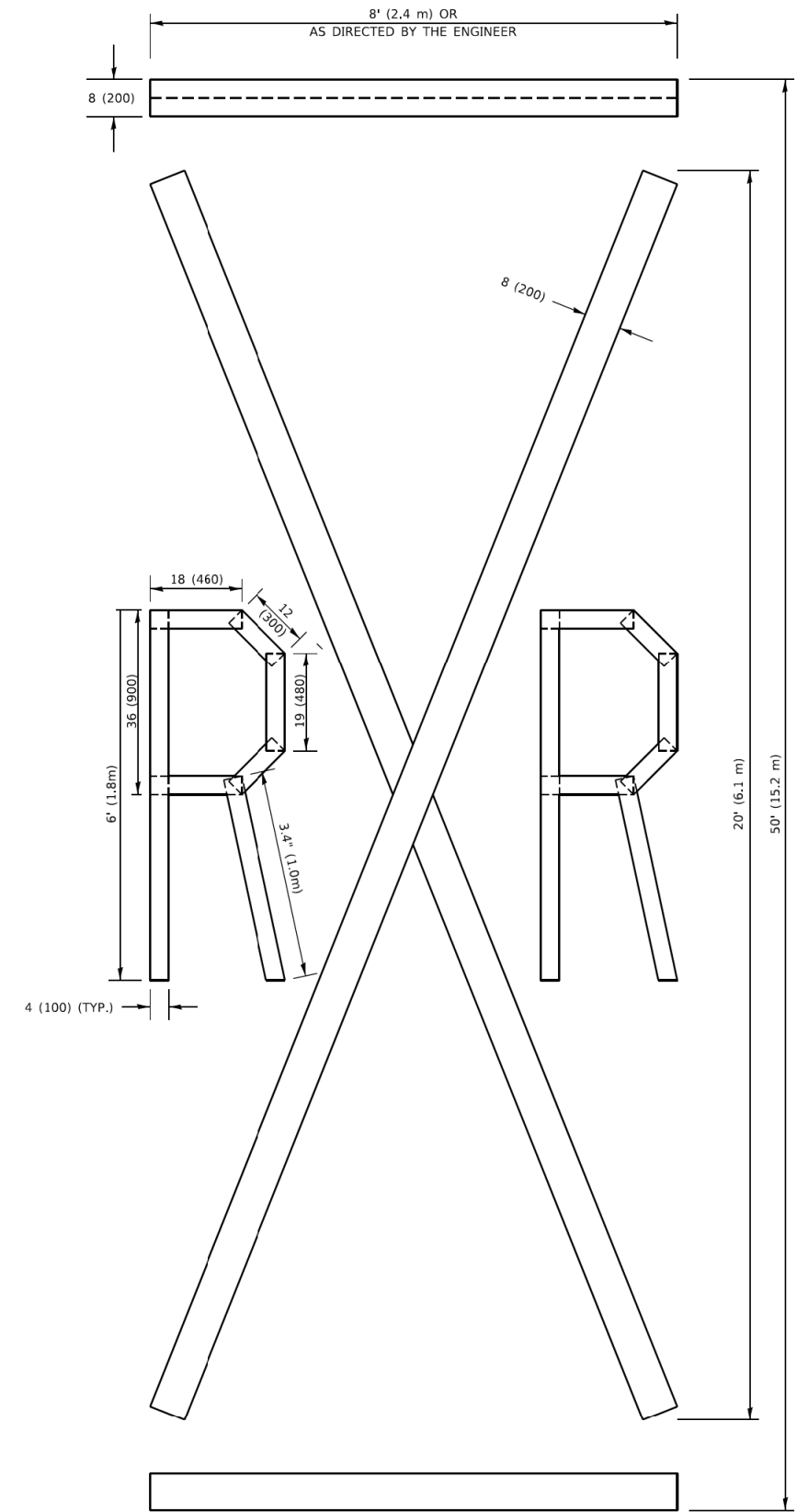


**QUANTITY**

4 (100) LINE = 82.5 ft. (25.1 m)  
27.5 sq. ft. (2.53 sq. m)

**NOTE:**

ALL QUANTITIES OF PLACEMENT ARE REPRESENTED IN LINEAR FEET OF 4" LINES TO MATCH THE 4" TEMPORARY TAPE PAY ITEM AND REPRESENTS THE TOTAL QUANTITY OF 4" TAPE REQUIRED.



**QUANTITY**

4 (100) LINE = 225.9 ft. (68.9 m)  
75.3 sq. ft. (6.99 sq. m)

All dimensions are in inches (millimeters) unless otherwise shown.

MODEL: Default  
FILE NAME: P:\0111\04\FB\01\TC-16\1111\04\FB\01\TC-16\1111\04\FB\01\TC-16.dgn

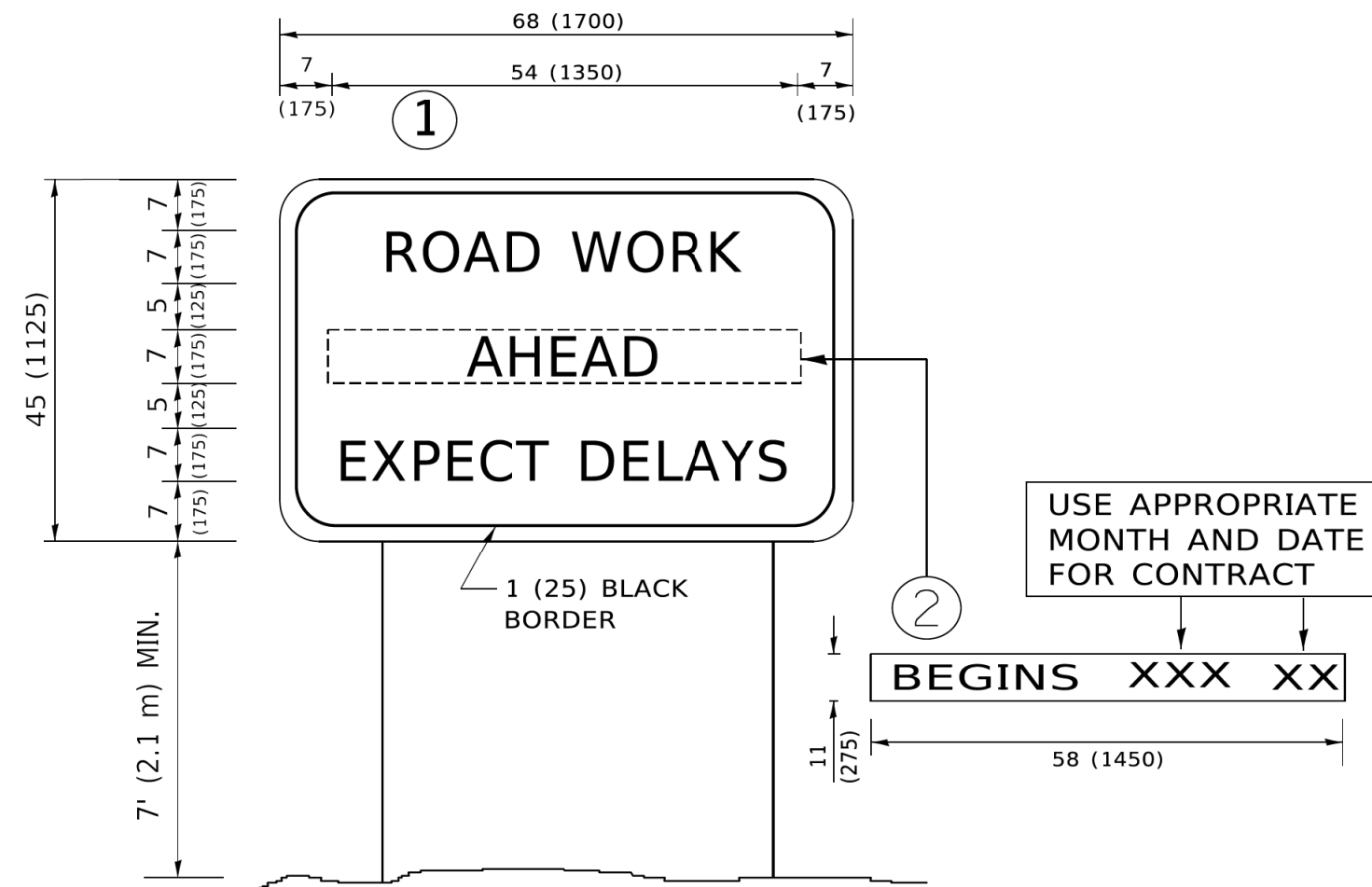
USER NAME = footemj	DESIGNED -	REVISED - T. RAMMACHER 03-02-98
PLOT SCALE = 50.0068" / in.	DRAWN -	REVISED - E. GOMEZ 08-28-00
PLOT DATE = 3/4/2019	CHECKED -	REVISED - E. GOMEZ 08-28-00
	DATE - 09-18-94	REVISED - A. SCHUETZE 09-15-16

**STATE OF ILLINOIS  
DEPARTMENT OF TRANSPORTATION**

**SHORT TERM PAVEMENT MARKING LETTERS AND SYMBOLS**

SCALE: NONE SHEET 1 OF 1 SHEETS STA. TO STA.

F.A. RTE. 3515	SECTION 22-00019-00-RS	COUNTY LAKE	TOTAL SHEETS 27	SHEET NO. 26
TC-16		CONTRACT NO. 61M34		
ILLINOIS FED. AID PROJECT				



**NOTES:**

1. USE BLACK LETTERING ON ORANGE BACKGROUND.
2. ERECT SIGNS IN ADVANCE OF THE LOCATION FOR THE "ROAD CONSTRUCTION AHEAD" SIGN AT LOCATIONS AS DIRECTED BY THE ENGINEER.
3. ERECT SIGN ① WITH INSTALLED PANEL ② ONE WEEK PRIOR TO THE START OF CONSTRUCTION.
4. REMOVE PANEL ② SOON AFTER THE START OF CONSTRUCTION.
5. SEE SPECIAL PROVISION FOR "TEMPORARY INFORMATION SIGNING" FOR ADDITIONAL INFORMATION.
6. ONE SIGN ASSEMBLY EQUALS 25.70 SQ. FT. (2.3 SQ. M.)
7. SHALL BE PAID FOR AS TEMPORARY INFORMATION SIGNING.

ALL DIMENSIONS ARE IN INCHES (MILLIMETERS) UNLESS OTHERWISE SHOWN.

MODEL: Default  
 FILE NAME: p:\u04484848\FB\DOT\DOT\Projects\DOT\Office\District 1\Projects\DOT\1627231\CADD\CA\Sheet1122.dgn

USER NAME = footemj	DESIGNED -	REVISED - R. MIRS 09-15-97
	DRAWN -	REVISED - R. MIRS 12-11-97
PLOT SCALE = 50.0000" / in.	CHECKED -	REVISED - T. RAMMACHER 02-02-99
PLOT DATE = 3/4/2019	DATE -	REVISED - C. JUCIUS 01-31-07

**STATE OF ILLINOIS  
DEPARTMENT OF TRANSPORTATION**

<b>ARTERIAL ROAD INFORMATION SIGN</b>	
SCALE: NONE	SHEET 1 OF 1 SHEETS STA. TO STA.

F.A.U. RTE.	SECTION	COUNTY	TOTAL SHEETS	SHEET NO.
3515	22-00019-00-RS	LAKE	27	27
TC-22		CONTRACT NO. 61M34		
ILLINOIS FED. AID PROJECT				