

STATE OF ILLINOIS DEPARTMENT OF TRANSPORTATION

PROPOSED HIGHWAY PLANS

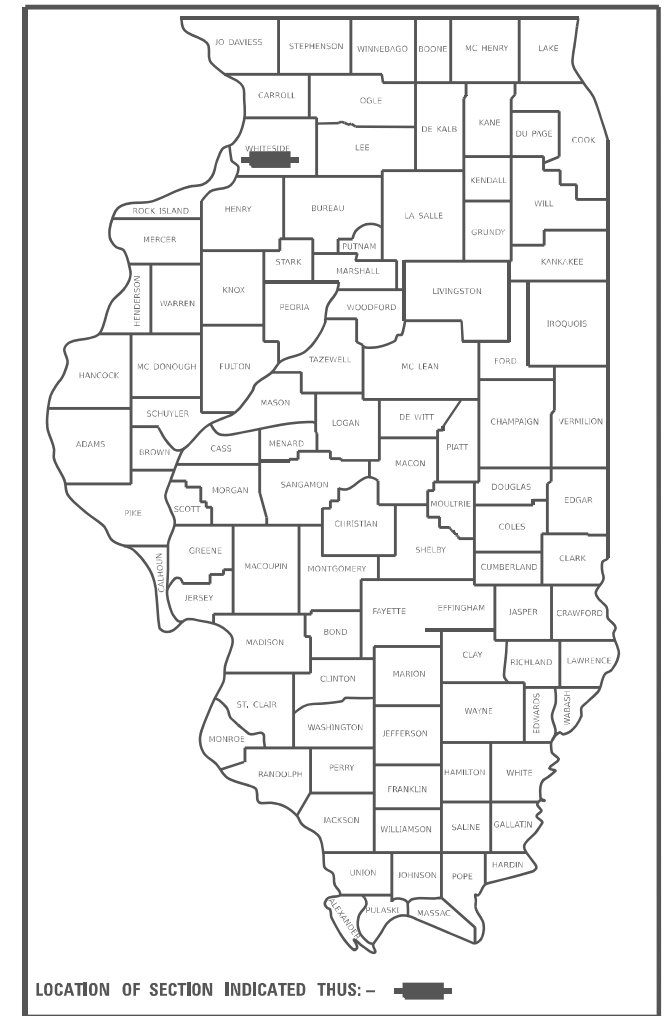
FOR INDEX OF SHEETS, SEE SHEET NO. 2
FOR STATE STANDARDS, SEE SHEET NO. 2

**FAP 22 & FAS 2184 (IL 78 & CORDOVA RD)
SECTION: (195-1HB-1 & 195-2HB)BP
PROJECT:
TYPE of IMPROVEMENT: BRIDGE PAINTING
WHITESIDE COUNTY**

F.A. RTE.	SECTION	COUNTY	TOTAL SHEETS	SHEET NO.
*	(195-1HB-1 & 195-2HB)BP	WHITESIDE	7	1
		ILLINOIS	CONTRACT NO. 64U99	

* FAP 22 & FAS 2184 (IL 78 & CORDOVA RD)

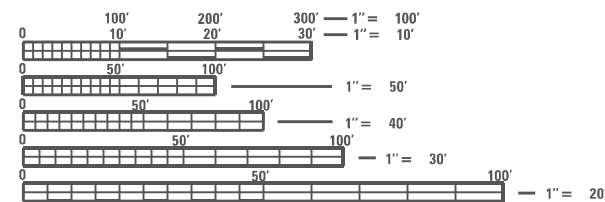
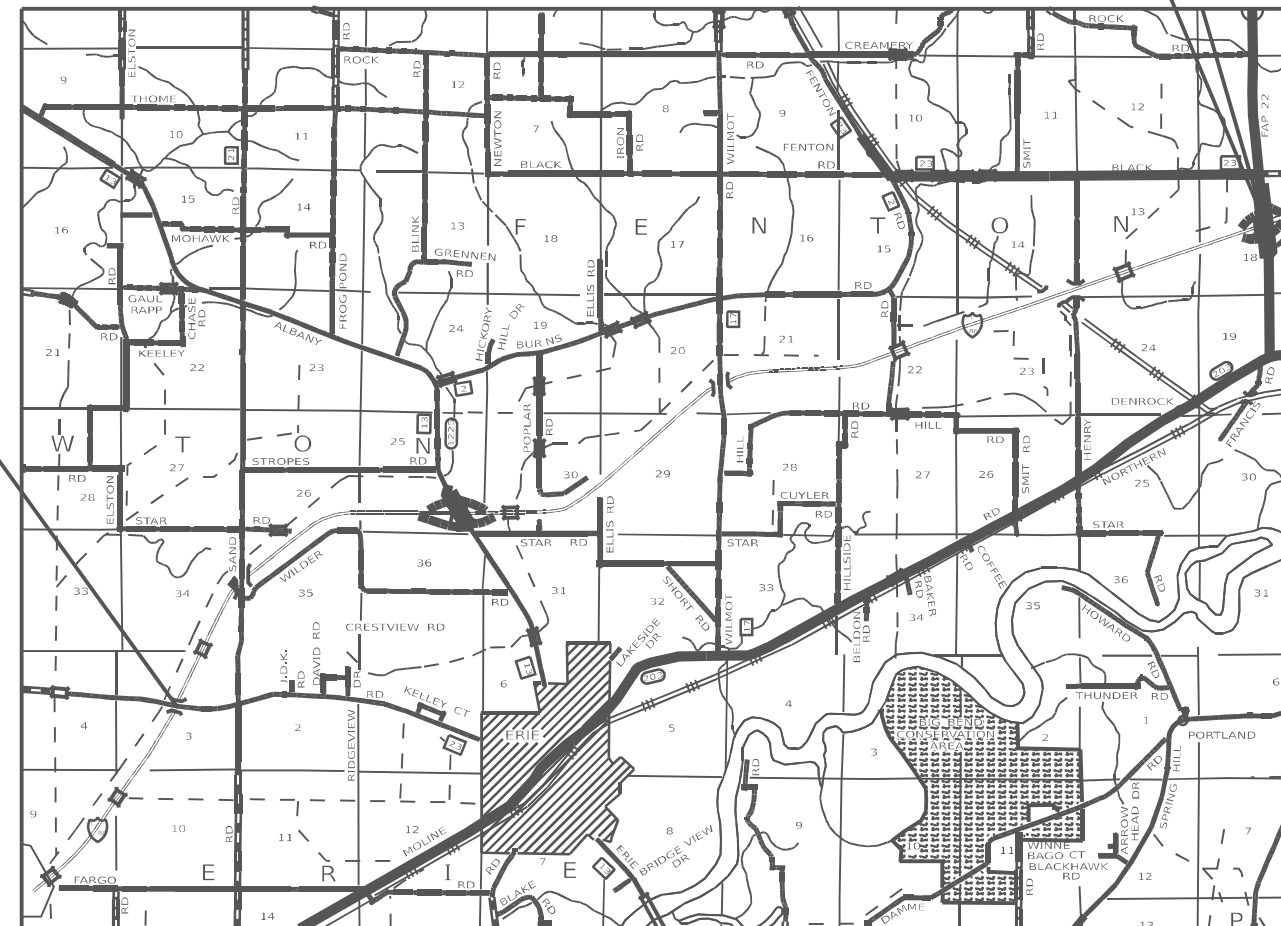
D-92-113-26



**LOCATION 2
SN 098-0055**

**LOCATION 1
SN 098-0065**

C-92-006-26



FULL SIZE PLANS HAVE BEEN PREPARED USING STANDARD ENGINEERING SCALES, REDUCED SIZED PLANS WILL NOT CONFORM TO STANDARD SCALES. IN MAKING MEASUREMENTS ON REDUCED PLANS, THE ABOVE SCALES MAY BE USED.

J.U.L.I.E.
JOINT UTILITY LOCATION INFORMATION FOR EXCAVATION
1-800-892-0123
OR 811

PROJECT ENGINEER: DAVID DOSS (815) 284-5416
PROJECT MANAGER: DERRICK LOPEZ (815) 284-5398

CONTRACT NO. 64U99

STATE OF ILLINOIS
DEPARTMENT OF TRANSPORTATION

SUBMITTED February 2 20 26

Juha Thompson
REGIONAL ENGINEER

March 20 20 26

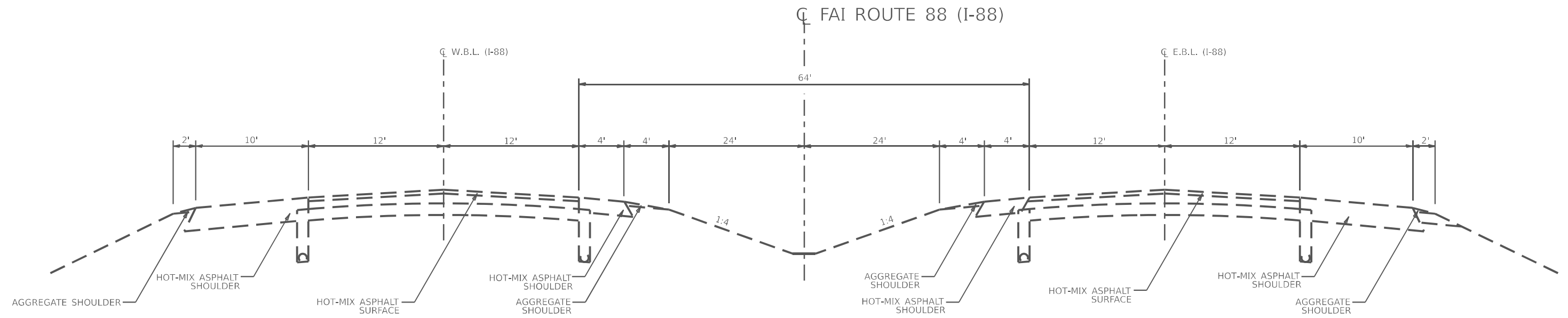
See E. A. [Signature]
ENGINEER OF DESIGN AND ENVIRONMENT

March 20 20 26

[Signature]
DIRECTOR OF HIGHWAYS PROJECT IMPLEMENTATION

**PRINTED BY THE AUTHORITY
OF THE STATE OF ILLINOIS**

EXISTING TYPICAL

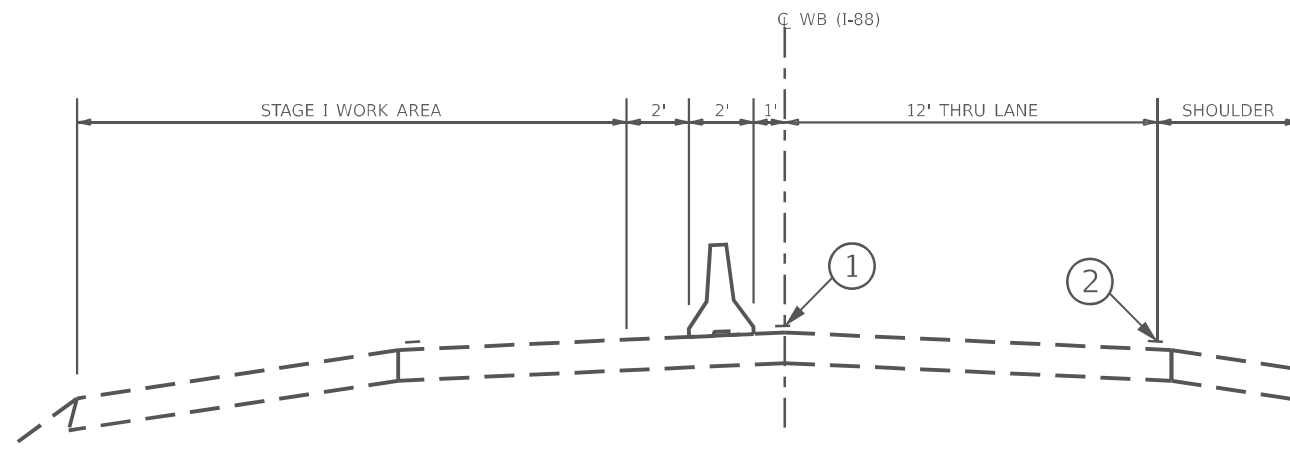


MODEL: Default
 FILE: \\nailes-pw\filestore\aw-beckley.com\PIV\DOT\Documents\DOT_0_cas\District_2\ORBD_Projects\Operations\Bridg... Section\District_2_Counties\Whiteside\095-0555\64U99\64U99-act-cover.dgn

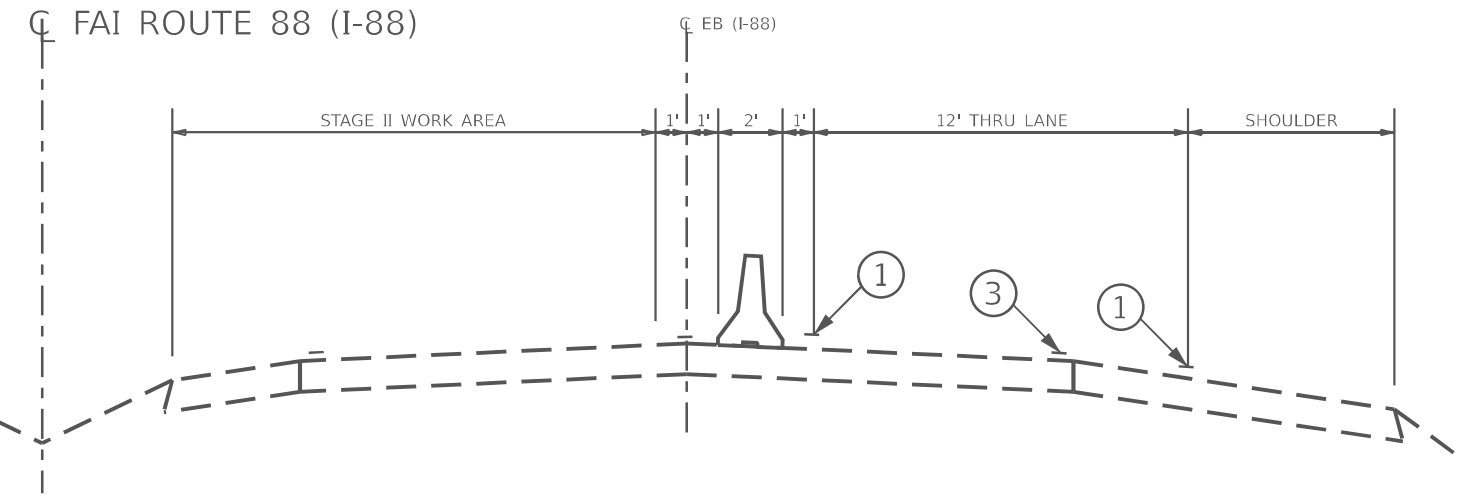
USER NAME = David.Doss PLOT SCALE = 5/SCALE5 PLOT DATE = 2/2/2026	DESIGNED -	REVISED -	STATE OF ILLINOIS DEPARTMENT OF TRANSPORTATION	EXISTING TYPICAL			F.A. RTE.	SECTION	COUNTY	TOTAL SHEETS	SHEET NO.	
	DRAWN -	REVISED -		SCALE:	SHEET	OF SHEETS	STA.	TO STA.	(195-1HB-1 & 195-2HB)BP	WHITESIDE	7	4
	CHECKED -	REVISED -								CONTRACT NO. 64U99		
DATE -	REVISED -							ILLINOIS FED. AID PROJECT				

STAGING TYPICALS

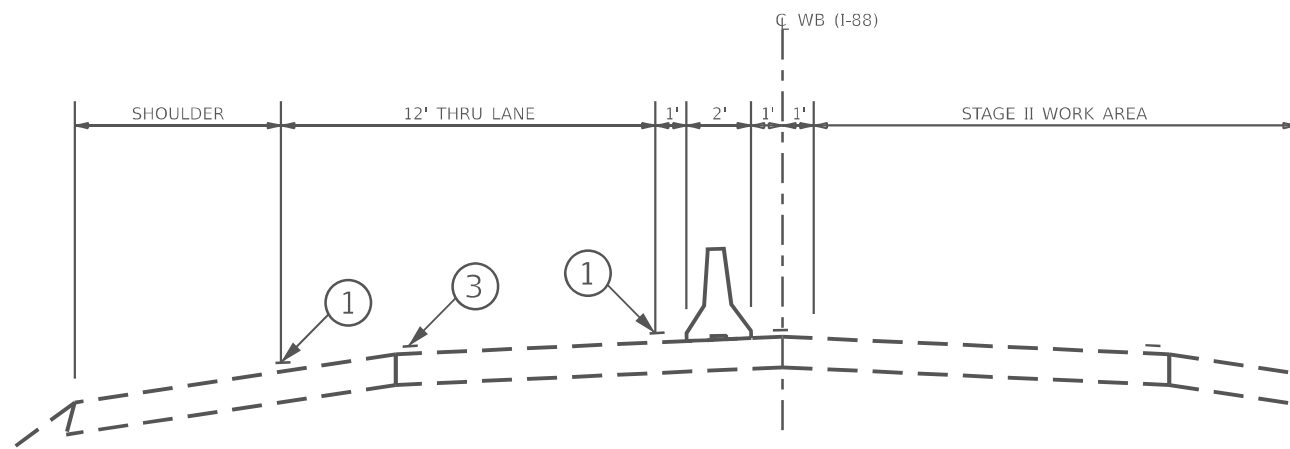
STAGE I



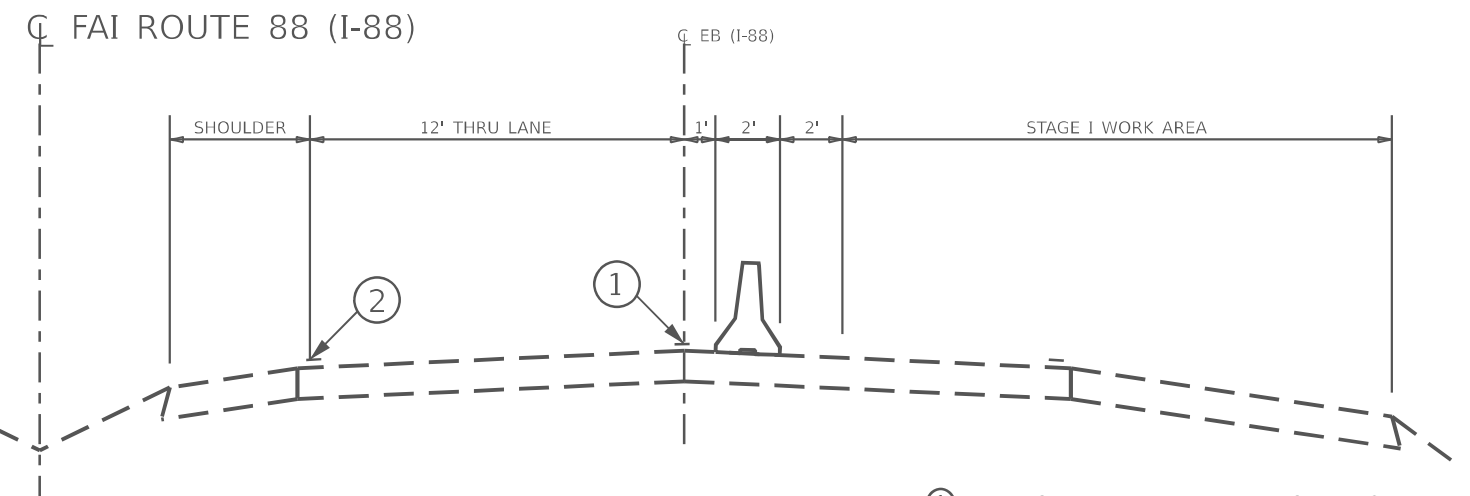
STAGE II



STAGE II



STAGE I



- ① TEMPORARY PAVEMENT MARKING TAPE SHALL BE PLACED THROUGHOUT THE TAPER AND ALONG-SIDE THE WORK AREA. THE RIGHT EDGE LINE SHALL BE WHITE AND THE LEFT EDGE LINE SHALL BE YELLOW.
- ② EXISTING PAVEMENT MARKING LINE
- ③ BLACKOUT TAPE TO COVER CONFLICTING EXISTING PAVEMENT MARKING LINES

MODEL: Default
 FILE: \\nailes-pw\fileshare\bea\files\com\p\w\dot\documents\DOT_0_csr\District_2\ORBD_projects\Operations\Bridges_Section\District_2_Counties\Whiteside\095-0055\64U99\CAD\064U99-act-cover.dgn

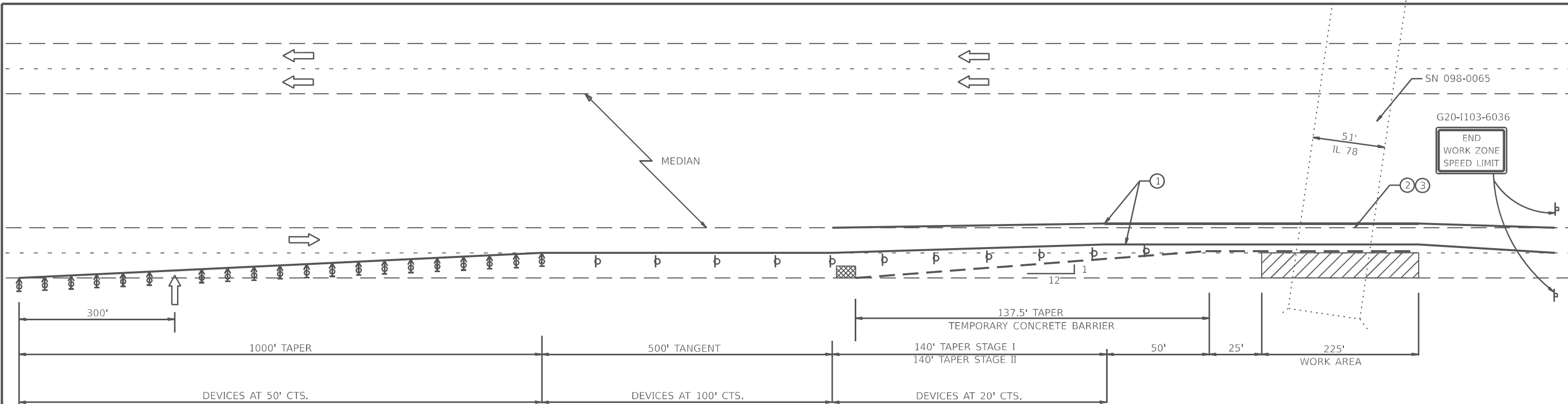
USER NAME = David.Doss	DESIGNED -	REVISED -
	DRAWN -	REVISED -
PLOT SCALE = \$SCALES	CHECKED -	REVISED -
PLOT DATE = 2/2/2026	DATE -	REVISED -

STATE OF ILLINOIS
DEPARTMENT OF TRANSPORTATION

STAGING TYPICALS

SCALE: SHEET OF SHEETS STA. TO STA.

F.A. RTE.	SECTION	COUNTY	TOTAL SHEETS	SHEET NO.
*	(195-1HB-1 & 195-2HB)BP	WHITESIDE	7	5
CONTRACT NO. 64U99				
ILLINOIS FED. AID PROJECT				

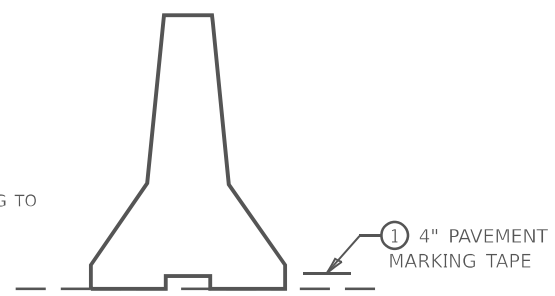


PAVEMENT MARKINGS

ALL TEMPORARY PAVEMENT MARKING SHALL BE, PAVEMENT MARKING TAPE, TYPE IV 4" AND THE MATERIALS SHALL BE ACCORDING TO ARTICLE 1095.06 OF THE STANDARD AND SPECIFICATIONS. THE CONTRACTOR SHALL INSTALL, MAINTAIN AND REMOVE ALL TEMPORARY PAVEMENT MARKING TAPE. THIS WORK SHALL NOT BE PAID SEPERATELY AND SHALL BE INCLUDED IN THE COST OF THE "TRAFFIC CONTROL AND PROTECTION STANDARD 701402 (SPECIAL)".

ALL CONFLICTING PAVEMENT MARKINGS AND RAISED REFLECTIVE PAVEMENT MARKERS SHALL BE PROTECTED PRIOR TO COVERING WITH PAVEMENT MARKING BLACKOUT TAPE, 4". PAVEMENT MARKING BLACKOUT TAPE, 4", SHALL EXTEND A MINIMUM OF 2 INCHES BEYOND THE EXISTING MARKINGS OR REFLECTORS IN ALL DIRECTIONS. THIS WORK SHALL INCLUDE PROTECTING EXISTING PAVEMENT MARKINGS AND RAISED REFLECTIVE PAVEMENT MARKERS, INSTALLING, MAINTAINING AND REMOVING BLACKOUT TAPE. THIS WORK SHALL NOT BE PAID SEPERATELY AND SHALL BE INCLUDED IN THE COST OF THE "TRAFFIC CONTROL AND PROTECTION STANDARD 701402 (SPECIAL)".

*NO EQUIPMENT OR MATERIALS SHALL ENCROACH WITHIN A DISTANCE OF 2'-0" AS MEASURED FROM THE BASE OF THE TEMPORARY CONCRETE BARRIER TO THE CL OF ROADWAY



TEMPORARY CONCRETE BARRIER

SYMBOLS

- ARROW BOARD
- WORK AREA
- SIGN
- DIRECTION INDICATOR BARRICADE WITH STEADY BURN MONODIRECTIONAL LIGHT
- TYPE II BARRICADE, DRUM, OR VERTICAL BARRICADE WITH STEADY BURN MONODIRECTIONAL LIGHT
- TEMPORARY CONCRETE BARRIER
- IMPACT ATTENUATOR, TEMPORARY (NON-REDIRECTIVE), TEST LEVEL 3

- ① TEMPORARY PAVEMENT MARKING TAPE SHALL BE PLACED THROUGHOUT THE TAPER AND ALONG-SIDE THE WORK AREA. THE RIGHT EDGE LINE SHALL BE WHITE AND THE LEFT EDGE LINE SHALL BE YELLOW.
- ② EXISTING PAVEMENT MARKING LINE
- ③ BLACKOUT TAPE TO COVER CONFLICTING EXISTING PAVEMENT MARKING LINES

GENERAL NOTES

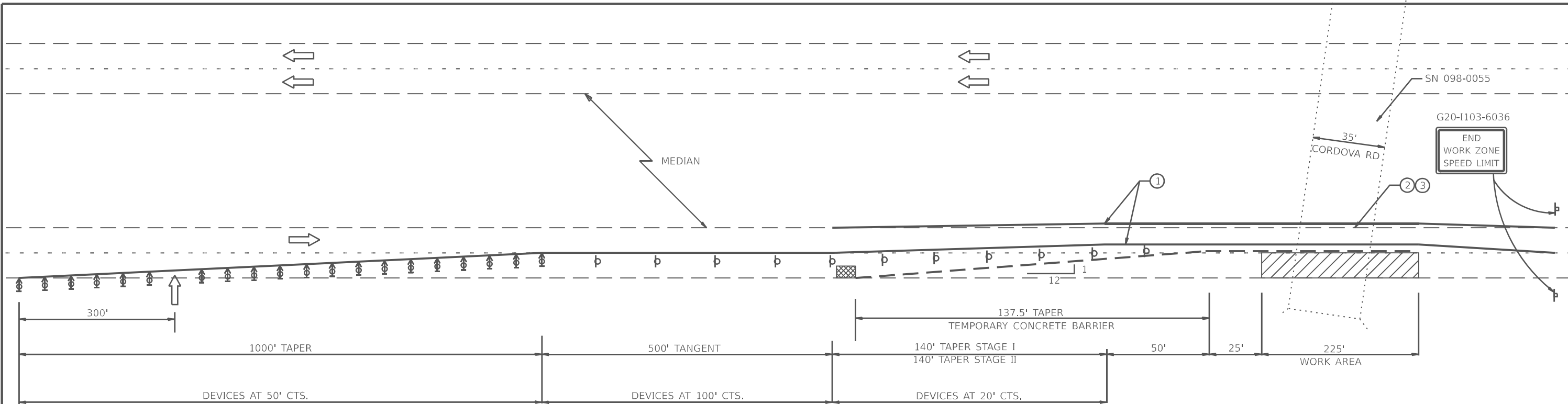
THIS STANDARD IS USED WHERE AT ANY TIME ANY VEHICLE, EQUIPMENT, WORKERS OR THEIR ACTIVITIES WILL ENCROACH ON THE PAVEMENT OR ON THE SHOULDER WITHIN 24 (600) OF THE EDGE OF PAVEMENT FOR DAYLIGHT OPERATION EXCEEDING ONE DAY AND WHERE TEMPORARY CONCRETE BARRIER IS UTILIZED.

THIS STANDARD MUST ALWAYS BE USED IN COMBINATION WITH STANDARD 701400.

TEMPORARY CONCRETE BARRIER SHALL BE ACCORDING TO STANDARD 704001.

MODEL: Default
FILE: \\nailes\pww\l\dst-cw-beckley.com\PIV\DOT\Documents\DOT_0_ces\District_2\ORBD_projects\Operations\Bridges_Section\District_2_Counties\Whiteside\098-0065\64U99\CAD\064U99-act-cover.dgn

USER NAME = David.Doss	DESIGNED -	REVISED -	STATE OF ILLINOIS DEPARTMENT OF TRANSPORTATION	TRAFFIC CONTROL & PROTECTION, STANDARD 701402 (SPECIAL) FOR SN 098-0065 (IL 78 OVER I-88)				F.A. RTE.	SECTION	COUNTY	TOTAL SHEETS	SHEET NO.
PLOT SCALE = 5/8"=1'	DRAWN -	REVISED -						195-1HB-1 & 195-2HB/BP	WHITESIDE	7	6	
PLOT DATE = 2/2/2026	CHECKED -	REVISED -		CONTRACT NO. 64U99				ILLINOIS FED. AID PROJECT				
	DATE -	REVISED -		SCALE:	SHEET	OF	SHEETS	STA.	TO	STA.		



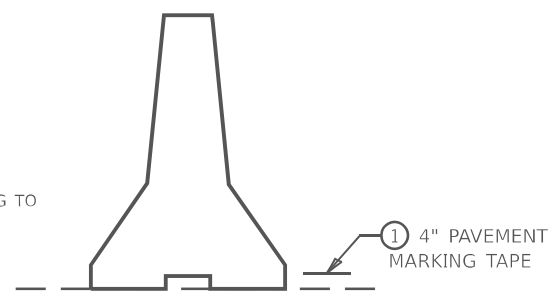
SEE STANDARD 701400 (SPECIAL) FOR APPROACH START OF LANE CLOSURE TAPER

PAVEMENT MARKINGS

ALL TEMPORARY PAVEMENT MARKING SHALL BE, PAVEMENT MARKING TAPE, TYPE IV 4" AND THE MATERIALS SHALL BE ACCORDING TO ARTICLE 1095.06 OF THE STANDARD AND SPECIFICATIONS. THE CONTRACTOR SHALL INSTALL, MAINTAIN AND REMOVE ALL TEMPORARY PAVEMENT MARKING TAPE. THIS WORK SHALL NOT BE PAID SEPERATELY AND SHALL BE INCLUDED IN THE COST OF THE "TRAFFIC CONTROL AND PROTECTION STANDARD 701402 (SPECIAL)".

ALL CONFLICTING PAVEMENT MARKINGS AND RAISED REFLECTIVE PAVEMENT MARKERS SHALL BE PROTECTED PRIOR TO COVERING WITH PAVEMENT MARKING BLACKOUT TAPE, 4". PAVEMENT MARKING BLACKOUT TAPE, 4", SHALL EXTEND A MINIMUM OF 2 INCHES BEYOND THE EXISTING MARKINGS OR REFLECTORS IN ALL DIRECTIONS. THIS WORK SHALL INCLUDE PROTECTING EXISTING PAVEMENT MARKINGS AND RAISED REFLECTIVE PAVEMENT MARKERS, INSTALLING, MAINTAINING AND REMOVING BLACKOUT TAPE. THIS WORK SHALL NOT BE PAID SEPERATELY AND SHALL BE INCLUDED IN THE COST OF THE "TRAFFIC CONTROL AND PROTECTION STANDARD 701402 (SPECIAL)".

*NO EQUIPMENT OR MATERIALS SHALL ENCROACH WITHIN A DISTANCE OF 2'-0" AS MEASURED FROM THE BASE OF THE TEMPORARY CONCRETE BARRIER TO THE ϕ OF ROADWAY



TEMPORARY CONCRETE BARRIER

SYMBOLS

- ARROW BOARD
- WORK AREA
- SIGN
- DIRECTION INDICATOR BARRICADE WITH STEADY BURN MONODIRECTIONAL LIGHT
- TYPE II BARRICADE, DRUM, OR VERTICAL BARRICADE WITH STEADY BURN MONODIRECTIONAL LIGHT
- TEMPORARY CONCRETE BARRIER
- IMPACT ATTENUATOR, TEMPORARY (NON-REDIRECTIVE), TEST LEVEL 3

- ① TEMPORARY PAVEMENT MARKING TAPE SHALL BE PLACED THROUGHOUT THE TAPER AND ALONG-SIDE THE WORK AREA. THE RIGHT EDGE LINE SHALL BE WHITE AND THE LEFT EDGE LINE SHALL BE YELLOW.
- ② EXISTING PAVEMENT MARKING LINE
- ③ BLACKOUT TAPE TO COVER CONFLICTING EXISTING PAVEMENT MARKING LINES

GENERAL NOTES

THIS STANDARD IS USED WHERE AT ANY TIME ANY VEHICLE, EQUIPMENT, WORKERS OR THEIR ACTIVITIES WILL ENCROACH ON THE PAVEMENT OR ON THE SHOULDER WITHIN 24 (600) OF THE EDGE OF PAVEMENT FOR DAYLIGHT OPERATION EXCEEDING ONE DAY AND WHERE TEMPORARY CONCRETE BARRIER IS UTILIZED.

THIS STANDARD MUST ALWAYS BE USED IN COMBINATION WITH STANDARD 701400.

TEMPORARY CONCRETE BARRIER SHALL BE ACCORDING TO STANDARD 704001.

MODEL: Default
FILE: \\nailes\pww\l\dst-cw-beckley.com\PIV\DOT\Documents\DOT_0_csr\District_2\ORBD_projects\Operations\Bridges_Section\District_2_Counties\Whiteside\098-0055\64U99\CAD\064U99-ext-cover.dgn

USER NAME = David.Doss	DESIGNED -	REVISED -
	DRAWN -	REVISED -
PLOT SCALE = 5/5CALES	CHECKED -	REVISED -
PLOT DATE = 2/2/2026	DATE -	REVISED -

STATE OF ILLINOIS
DEPARTMENT OF TRANSPORTATION

TRAFFIC CONTROL & PROTECTION, STANDARD 701402 (SPECIAL)
FOR SN 098-0055 (CORDOVA RD OVER I-88)

F.A. RTE.	SECTION	COUNTY	TOTAL SHEETS	SHEET NO.
*	(195-1HB-1 & 195-2HB)BP	WHITESIDE	7	7
CONTRACT NO. 64U99				
ILLINOIS FED. AID PROJECT				