

# PROPOSED HIGHWAY PLANS

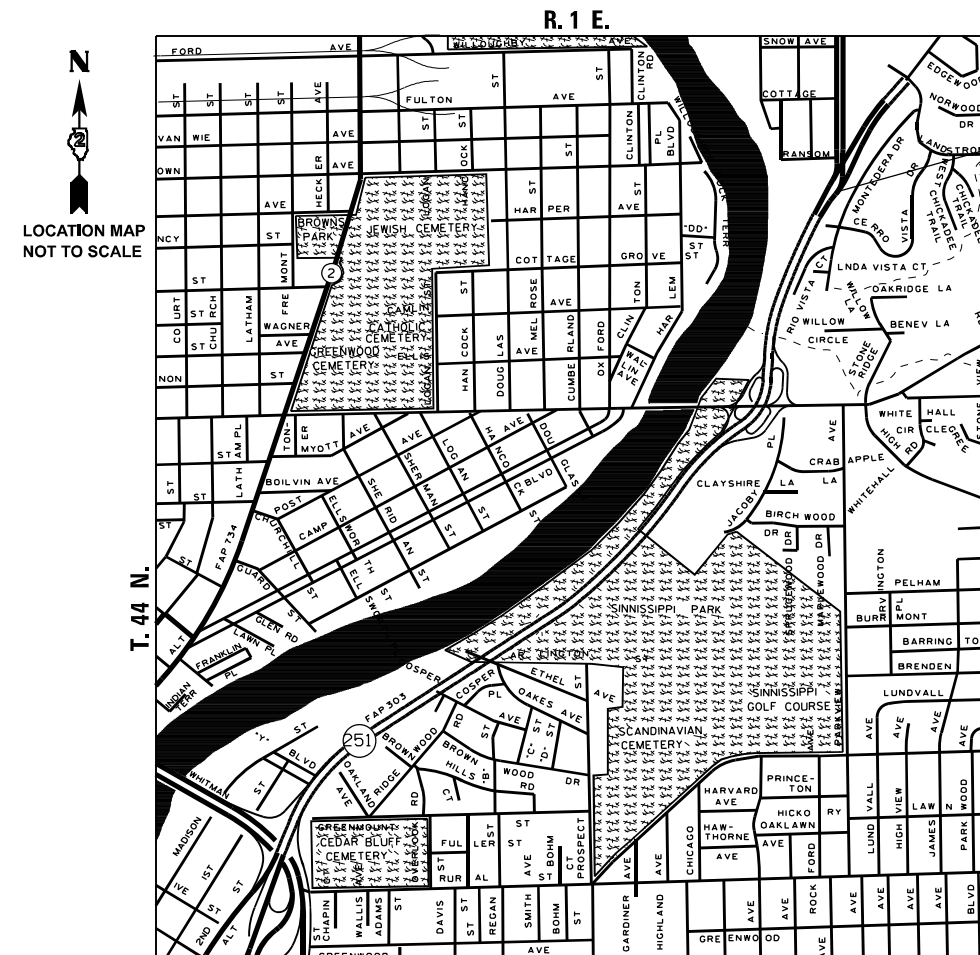
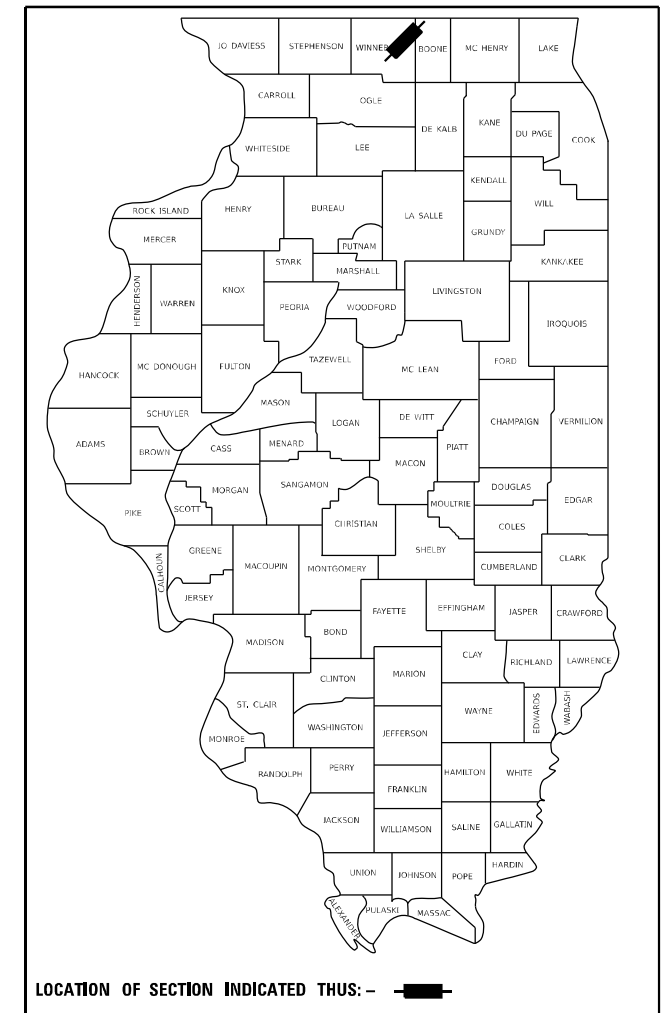
FAP ROUTE 303 (IL-251)  
SECTION (1,1-1)SG  
PROJECT  
SIGN TRUSS  
0.3 MI S OF LANDSTROM RD  
WINNEBAGO COUNTY

C-92-048-26

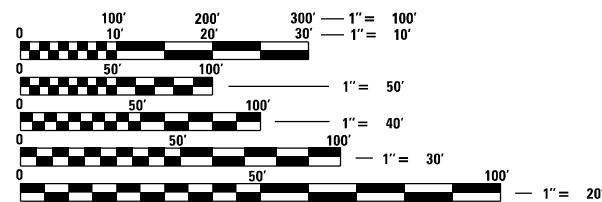
NORTHWEST ROCKFORD TOWNSHIP: SECTION 13

| F.A.P. RTE. | SECTION    | COUNTY    | TOTAL SHEETS       | SHEET NO. |
|-------------|------------|-----------|--------------------|-----------|
| 303         | (1,1-1) SG | WINNEBAGO | 14                 | 1         |
|             |            | ILLINOIS  | CONTRACT NO. 64V38 |           |

D-92-152-26



IMPROVEMENT  
STA 592 + 25



FULL SIZE PLANS HAVE BEEN PREPARED USING STANDARD ENGINEERING SCALES, REDUCED SIZED PLANS WILL NOT CONFORM TO STANDARD SCALES. IN MAKING MEASUREMENTS ON REDUCED PLANS, THE ABOVE SCALES MAY BE USED.

J.U.L.I.E.  
JOINT UTILITY LOCATION INFORMATION FOR EXCAVATION  
1-800-892-0123  
OR 811

PROJECT ENGINEER: CHAD SPREEMAN  
PROJECT MANAGER: TRACI DUDEN (815) 284-5932  
E-MAIL: Traci.Duden@illinois.gov  
CONTRACT NO. 64V38

STATE OF ILLINOIS  
DEPARTMENT OF TRANSPORTATION

SUBMITTED January 28 2026  
*Shiba Thompson*  
REGIONAL ENGINEER

March 20 2026  
*See E. A. [Signature]*  
ENGINEER OF DESIGN AND ENVIRONMENT

March 20 2026  
*[Signature]*  
DIRECTOR OF HIGHWAYS PROJECT IMPLEMENTATION

PRINTED BY THE AUTHORITY OF THE STATE OF ILLINOIS

**INDEX OF SHEETS**

|        |   |
|--------|---|
| 1      | COVER SHEET                               |
| 2      | INDEX / HIGHWAY STANDARDS / GENERAL NOTES |
| 3      | SUMMARY OF QUANTITIES                     |
| 4      | SIGN SCHEDULE                             |
| 5      | SIGNING DETAILS                           |
| 6      | SIGN DESIGN                               |
| 7 - 14 | OVERHEAD SIGN STRUCTURES                  |

**HIGHWAY STANDARDS**

|           |  |
|-----------|--|
| 000001-09 | STANDARD SYMBOLS, ABBREVIATIONS AND PATTERNS   |
| 001001-02 | AREAS OF REINFORCEMENT BARS  |
| 001006-00 | DECIMAL OF AN INCH AND A FOOT  |
| 701101-05 | OFF-ROAD OPERATIONS, MULTILANE, 15 FT (4.5 M) TO 24" (600 MM) FROM PAVEMENT EDGE             |
| 701411-09 | LANE CLOSURE, MULTILANE, AT ENTRANCE OR EXIT RAMP FOR SPEEDS GREATER THAN OR EQUAL TO 45 MPH |
| 701422-10 | LANE CLOSURE, MULTILANE, FOR SPEEDS GREATER THAN OR EQUAL TO 45 MPH TO 55 MPH                |
| 701901-11 | TRAFFIC CONTROL DEVICES  |
| 720001-01 | SIGN PANEL MOUNTING DETAILS  |
| 720006-04 | SIGN PANEL ERECTION DETAILS  |
| 701601-09 | URBAN LANE CLOSURE, MULTILANE, 1W OR 2W WITH NONTRAVERSABLE MEDIAN                           |

**GENERAL NOTES**

THE CONTRACTOR SHALL BE RESPONSIBLE FOR LOCATING AND PROTECTING UTILITY PROPERTY DURING CONSTRUCTION OPERATIONS AS OUTLINED IN ARTICLE 107.39 OF THE STANDARD SPECIFICATIONS. A MINIMUM OF 48 HOURS ADVANCE NOTICE IS REQUIRED FOR NON-EMERGENCY WORK. THE JULIE NUMBER IS 800-892-0123. THE FOLLOWING LISTED UTILITIES LOCATED WITHIN THE PROJECT LIMITS OR IMMEDIATELY ADJACENT TO THE PROJECT CONSTRUCTION LIMITS ARE MEMBERS OF JULIE:

NAME & PHONE NUMBER OF JULIE COMPANIES:

NICOR & GAS CO.  
TEL. (630) 388-3019  
1844 FERRY ROAD  
NAPERVILLE IL 60563-9600  
(GAS)

FIBER  
TEL. (815) 753-5798  
3100 SYCAMORE ROAD  
DEKALB IL 60115  
(FIBER)

BLUEBRID NETWORK  
TEL. (847) 650-1348  
1522 8TH AVE  
BELVIDERE IL 60018  
COMMUNICATIONS)

ROCK RIVER WATER  
RECLAMATION DISTRICT  
TEL. (815) 387-7400  
3501 KISHWAUKEE STREET  
ROCKFORD IL 61126-7480  
(SEWER)

ATT  
TEL. (630) 573-5465  
1000 COMMERCE DRIVE  
OAK BROOK IL 60523  
(TELEPHONE)

COMMONWEALTH EDISON COMPANY  
TEL. (630) 437-2212  
123 ENERGY AVENUE  
ROCKFORD IL 61109  
(ELECTRIC)

COMCAST CABLE  
TEL. (224) 229-5432  
4450 KISHWAUKEE STREET  
ROCKFORD IL 61109  
(CATV)

ROCKFORD WATER DEPARTMENT  
TEL. (815) 967-7060  
425 E. STATE STREET  
ROCKFORD IL 601104  
(WATER)

IDOT IS NOT A MEMBER OF JULIE. IF YOU ARE NEAR ANY OVERHEAD LIGHTING, INTERSECTION LIGHTING OR TRAFFIC SIGNALS, CONTACT THE IDOT TRAFFIC OFFICE AT 815/284-5469 AT LEAST 48 HOURS PRIOR TO WORK.

IDOT FACILITIES IN THIS AREA ARE LOCATED BY ROCKFORD OR LOVESPARK.

IT SHALL BE THE CONTRACTOR'S RESPONSIBILITY TO CONTACT THE MUNICIPALITY TO DETERMINE APPROVED METHODS OF UTILITY STRUCTURE ADJUSTMENT. UTILITY STRUCTURES MAY INCLUDE, BUT ARE NOT LIMITED TO, MANHOLES, WATER VALVES, HANDHOLES, ETC. ALL MATERIALS AND WORK NECESSARY TO COMPLETE ADJUSTMENTS PER MUNICIPALITY REQUIREMENTS SHALL BE CONSIDERED INCLUDED IN THE COST OF THE ASSOCIATED ADJUSTMENT PAY ITEM.

**COMMITMENTS**

- All tree impacts will be mitigated under Inter Governmental Agreement No. 21-IDNR-Trees-D2 with IDNR, therefore no tree replacement is included with this project. This agreement covers all projects funded from FY 2025 through FY 2028.
- Work which disturbs the ground or may remove flowering plants should be done between October 1st and April 1st to avoid potential impacts.
- If these dates cannot be accommodated, once the growing season begins, the project limits should be routinely mowed similar to typical lawn grass height (not more than 6 inches). The area should not be allowed to grow in excess of 6 inches after the initial mowing to prevent the return of floral resources. Mowing should continue throughout the growing season.

MODEL: SHT\_PLAN  
FILE NAME: C:\Bentley\CONNECT\1011\Organization-Ch\IDOT\_Standards\Ceil\IDOT\_Sheets.dwg

|                         |            |           |
|-------------------------|------------|-----------|
| USER NAME = Eric.Thomas | DESIGNED - | REVISED - |
|                         | DRAWN -    | REVISED - |
|                         | CHECKED -  | REVISED - |
| PLOT DATE = 12/7/2022   | DATE -     | REVISED - |

**STATE OF ILLINOIS  
DEPARTMENT OF TRANSPORTATION**

**INDEX OF SHEETS / HIGHWAY STANDARDS / GENERAL NOTES**

SCALE: SHEET OF SHEETS STA. TO STA.

| F.A.P. RTE.                 | SECTION   | COUNTY    | TOTAL SHEETS | SHEET NO. |
|-----------------------------|-----------|-----------|--------------|-----------|
| 303                         | (1,1-1)SG | WINNEBAGO | 14           | 2         |
| CONTRACT NO. 64V38          |           |           |              |           |
| ILLINOIS   FED. AID PROJECT |           |           |              |           |

| CODE NO.   | ITEM  | UNIT   | TOTAL QUANTITY | CONSTR. CODE  |      |
|------------|---|--------|----------------|---------------|------|
|            |   |        |                | 100% STATE    |      |
|            |   |        |                | TRAFFIC SIGNS | 0044 |
|            |   |        |                | NONE          |      |
| * 66900200 | NON-SPECIAL WASTE DISPOSAL                                | CU YD  | 51             | 51            |      |
| * 66900530 | SOIL DISPOSAL ANALYSIS                                    | EACH   | 1              | 1             |      |
| * 66901001 | REGULATED SUBSTANCES PRE-CONSTRUCTION PLAN                | L SUM  | 1              | 1             |      |
| * 66901003 | REGULATED SUBSTANCES FINAL CONSTRUCTION REPORT            | L SUM  | 1              | 1             |      |
| * 66901006 | REGULATED SUBSTANCES MONITORING                           | CAL DA | 2              | 2             |      |
| 67100100   | MOBILIZATION  | L SUM  | 1              | 1             |      |
| 70100320   | TRAFFIC CONTROL AND PROTECTION, STANDARD 701422           | L SUM  | 1              | 1             |      |
| 70100420   | TRAFFIC CONTROL AND PROTECTION, STANDARD 701411           | EACH   | 1              | 1             |      |
| 70102630   | TRAFFIC CONTROL AND PROTECTION, STANDARD 701601           | L SUM  | 1              | 1             |      |
| * 72000300 | SIGN PANEL - TYPE 3                                       | SQ FT  | 288.3          | 288.3         |      |
| * 72400330 | REMOVE SIGN PANEL - TYPE 3                                | SQ FT  | 64             | 64            |      |
| 73300200   | OVERHEAD SIGN STRUCTURE - SPAN, TYPE II-A (4'-6" X 5'-3") | FOOT   | 85             | 85            |      |
| 73400100   | CONCRETE FOUNDATIONS                                      | CU YD  | 35.3           | 35.3          |      |

MODEL: SHT\_PLAN  
 FILE NAME: C:\Bentley\CONNECT\1011\Organization-Civil\DOT\_Standards\Ceill\DOT\_Sheets.dwg

|                         |            |           |
|-------------------------|------------|-----------|
| USER NAME = Eric.Thomas | DESIGNED - | REVISED - |
|                         | DRAWN -    | REVISED - |
|                         | CHECKED -  | REVISED - |
| PLOT DATE = 12/7/2022   | DATE -     | REVISED - |

**STATE OF ILLINOIS  
DEPARTMENT OF TRANSPORTATION**

**SUMMARY OF QUANTITIES**

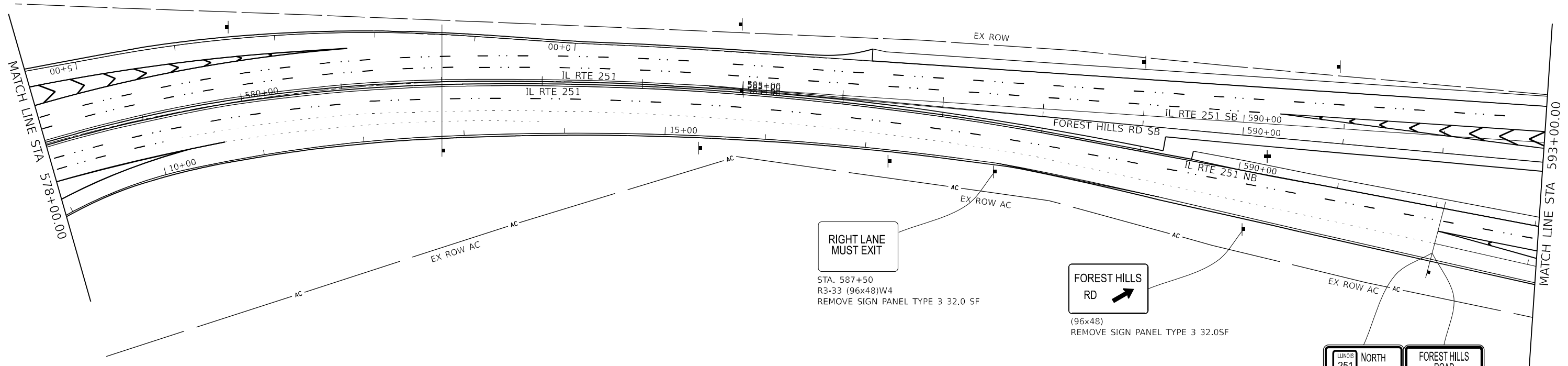
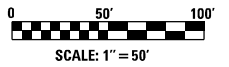
SCALE: SHEET OF SHEETS STA. TO STA.

| F.A.P. RTE.               | SECTION    | COUNTY    | TOTAL SHEETS | SHEET NO. |
|---------------------------|------------|-----------|--------------|-----------|
| 303                       | (1, 1-1)SG | WINNEBAGO | 14           | 3         |
| CONTRACT NO. 64V38        |            |           |              |           |
| ILLINOIS FED. AID PROJECT |            |           |              |           |

|              |         |      |                                     |           |               | 72000300      | 72400330                  |                                  |
|--------------|---------|------|-------------------------------------|-----------|---------------|---------------|---------------------------|----------------------------------|
| Mile         | Station | Side | Common Name of Sign                 | Sign Code | Size Hor (in) | Size Ver (in) | SIGN PANEL TYPE 3 (SQ FT) | REMOVE SIGN PANEL TYPE 3 (SQ FT) |
|              | 587+50  | R    | Right Lane Must Exit                | W4        | 96            | 48            |                           | 32.00                            |
| 11.25        | 590+25  | R    | Forest Hills Rd with diagonal arrow |           | 96            | 48            |                           | 32.00                            |
| 11.27        | 592+25  | R    | IL 251 North Double down arrows     |           | 198           | 120           | 165.00                    |                                  |
|              |         |      | Forest Hills Rd Exit only           |           | 174           | 102           | 123.30                    |                                  |
| <b>Total</b> |         |      |                                     |           |               |               | <b>288.30</b>             | <b>64.00</b>                     |

MODEL: SHT\_PLAN  
 FILE NAME: C:\Bentley\CONNECT1011\Organization-Civil\DOT\_Standards\Ceil\DOT\_Sheets.dwg

|                         |            |           |   |                                     |           |                    |         |          |                 |           |
|-------------------------|------------|-----------|---|-------------------------------------|-----------|--------------------|---------|----------|-----------------|-----------|
| USER NAME = Eric.Thomas | DESIGNED - | REVISED - | <b>STATE OF ILLINOIS<br/>DEPARTMENT OF TRANSPORTATION</b> | <b>SIGN SCHEDULE</b>                |           | F.A.P. RTE.        | SECTION | COUNTY   | TOTAL SHEETS    | SHEET NO. |
|                         | DRAWN -    | REVISED - |   | 303                                 | (1,1-1)SG | WINNEBAGO          | 14      | 4        |                 |           |
|                         | CHECKED -  | REVISED - |   | SCALE: SHEET OF SHEETS STA. TO STA. |           | CONTRACT NO. 64V38 |         | ILLINOIS | FED.AID PROJECT |           |
| PLOT DATE = 12/7/2022   | DATE -     | REVISED - |   |                                     |           |                    |         |          |                 |           |



**RIGHT LANE  
MUST EXIT**

STA. 587+50  
R3-33 (96x48)W4  
REMOVE SIGN PANEL TYPE 3 32.0 SF

**FOREST HILLS  
RD**

(96x48)  
REMOVE SIGN PANEL TYPE 3 32.0SF

|                           |                      |                            |
|---------------------------|----------------------|----------------------------|
| ILLINOIS<br>251           | NORTH                | FOREST HILLS<br>ROAD       |
|                           | LOVES PARK<br>BELOIT |                            |
| (198x120)                 |                      | (174x102)                  |
| SIGN PANEL TYPE 3 165.0SF |                      | SIGN PANEL TYPE 3 123.30SF |

NOTE: CONTRACT TRAFFIC OPERATIONS (5)  
WORKING DAYS BEFORE INSTALLING SIGNS

MODEL: Default  
 FILE NAME: P:\1101\dot\paw\_bentley.com\P\1101\DOT\Documents\DOT 0 ces\District 2\ORRD Projects\64V38\Program Development\Studies & Plans\Design\CADD\Cadd\Sheet02\_64V38-sign-plt.dgn

|                            |            |           |
|----------------------------|------------|-----------|
| USER NAME = Cristian,Rosas | DESIGNED - | REVISED - |
|                            | DRAWN -    | REVISED - |
| PLOT SCALE = \$SCALE\$     | CHECKED -  | REVISED - |
| PLOT DATE = 1/14/2026      | DATE -     | REVISED - |

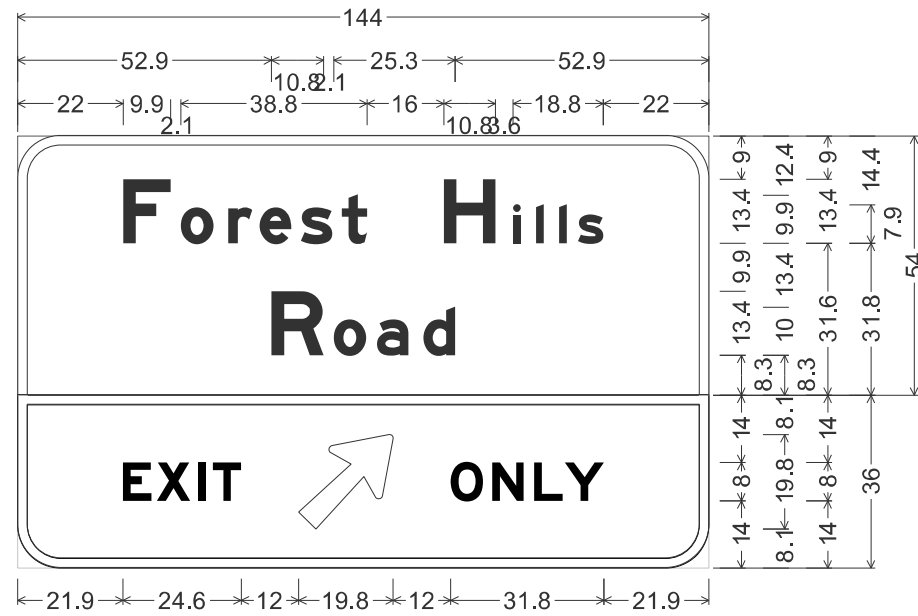
**STATE OF ILLINOIS  
DEPARTMENT OF TRANSPORTATION**

**IL 251 (N 2ND ST)  
SIGNING DETAILS**

SCALE: 1"=50' SHEET OF SHEETS STA. 578+00 TO STA. 593+00

| F.A.P. RTE.               | SECTION   | COUNTY    | TOTAL SHEETS | SHEET NO. |
|---------------------------|-----------|-----------|--------------|-----------|
| 303                       | (1,1-1)SG | WINNEBAGO | 14           | 5         |
| CONTRACT NO. 64V38        |           |           |              |           |
| ILLINOIS FED. AID PROJECT |           |           |              |           |

# EXIT 24

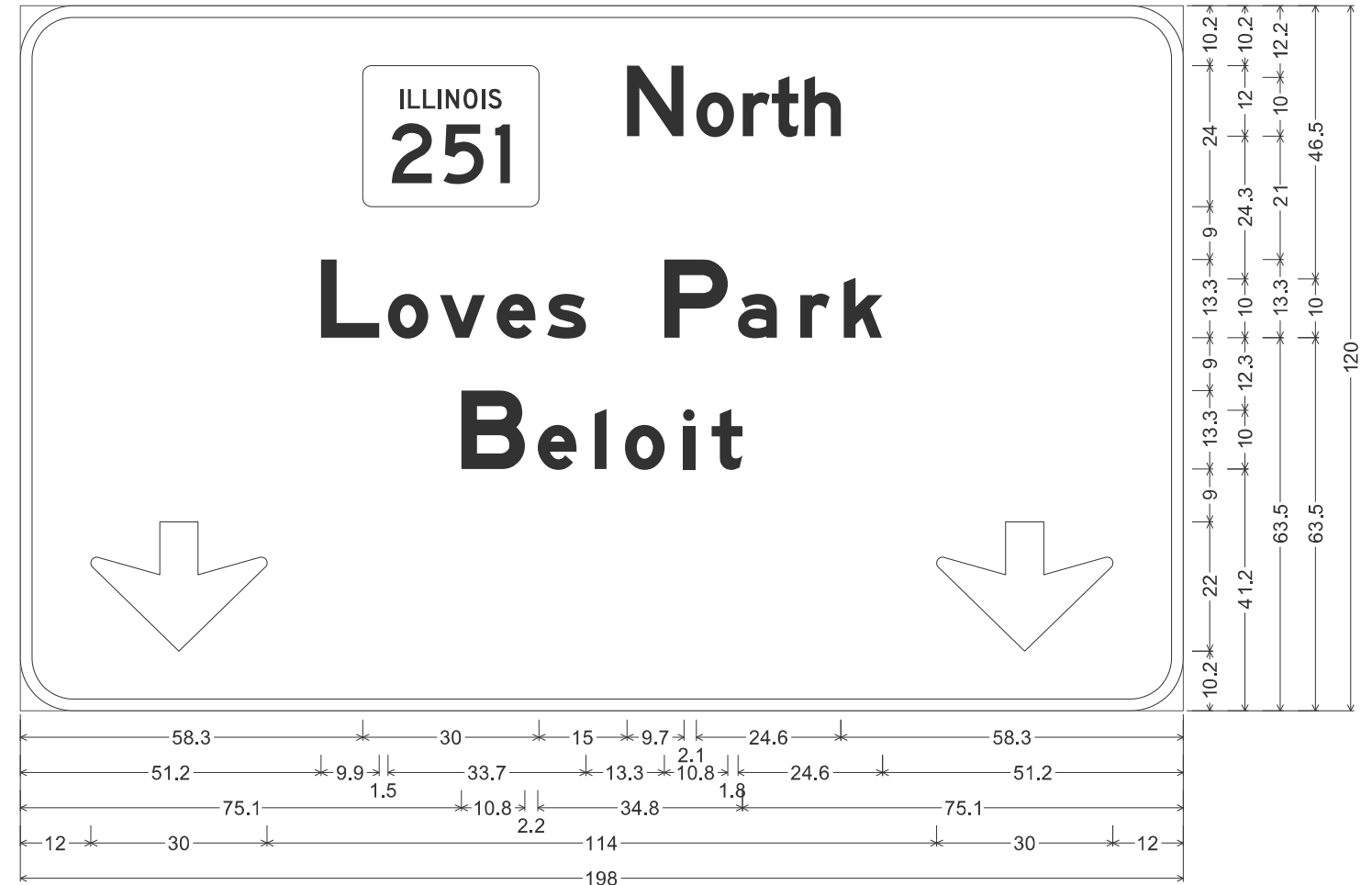


9.0" Radius, 2.0" Border, White on Green;  
 "Forest Hills", E Mod 2K; "Road", E Mod 2K;

9.0" Radius, 2.0" Border, Black on Yellow;  
 "EXIT", E Mod 2K; Arrow 80 - 25.0" 45°;  
 "ONLY", E Mod 2K;

Table of widths and spaces

|      |      |      |     |     |     |     |     |      |      |     |      |
|------|------|------|-----|-----|-----|-----|-----|------|------|-----|------|
| F    | o    | r    | e   | s   | t   |     |     |      |      |     |      |
| 22.0 | 9.9  | 2.1  | 6.8 | 3.1 | 5.0 | 1.5 | 6.6 | 2.0  | 6.6  | 2.0 | 5.1  |
|      | H    | i    | l   | l   | s   |     |     |      |      |     |      |
|      | 16.1 | 10.8 | 3.6 | 1.6 | 3.3 | 1.5 | 3.3 | 1.5  | 2.4  | 5.3 | 21.9 |
| R    | o    | a    | d   |     |     |     |     |      |      |     |      |
| 52.9 | 10.8 | 2.1  | 6.8 | 2.3 | 6.5 | 3.1 | 6.6 | 52.9 |      |     |      |
| E    | X    | I    | T   | ↗   |     |     |     |      |      |     |      |
| 21.9 | 6.0  | 1.0  | 7.0 | 1.8 | 1.5 | 1.5 | 5.9 | 12.0 | 19.6 |     |      |
|      | O    | N    | L   | Y   |     |     |     |      |      |     |      |
|      | 12.0 | 6.8  | 1.9 | 6.5 | 2.3 | 5.9 | 0.4 | 8.1  | 21.9 |     |      |



9.0" Radius, 2.0" Border, White on Green;  
 "North", E 2K; "Loves Park", E Mod 2K; "Beloit", E Mod 2K; Down Arrow Custom - 22.0" 270°;

Down Arrow Custom - 22.0" 270°;

Table of distances between letter and object lefts

|      |      |      |      |     |      |      |      |     |     |      |
|------|------|------|------|-----|------|------|------|-----|-----|------|
| 58.3 | 251  | N    | o    | r   | t    | h    | 58.3 |     |     |      |
| 58.3 | 45.0 | 11.8 | 7.9  | 4.9 | 5.6  | 6.2  | 58.3 |     |     |      |
| 51.2 | L    | o    | v    | e   | s    | P    | a    | r   | k   | 51.2 |
| 51.2 | 11.4 | 8.8  | 9.7  | 8.6 | 19.9 | 12.6 | 10.6 | 7.4 | 6.6 | 51.2 |
| 75.1 | B    | e    | l    | o   | i    | t    | 75.1 |     |     |      |
| 75.1 | 13.0 | 9.7  | 5.1  | 9.9 | 4.9  | 5.2  | 75.1 |     |     |      |
| 12.0 | ↕    | ↕    | 12.0 |     |      |      |      |     |     |      |

MODEL: D2\_SHT\_Sign  
 FILE NAME: c:\pwworking\wisconsin\mtd\1176990\D2\_64V38\_sht\_detail\_sign.dgn

|                             |            |           |
|-----------------------------|------------|-----------|
| USER NAME = Martin.Schuette | DESIGNED - | REVISED - |
|                             | DRAWN -    | REVISED - |
|                             | CHECKED -  | REVISED - |
| PLOT DATE = 1/13/2026       | DATE -     | REVISED - |

STATE OF ILLINOIS  
 DEPARTMENT OF TRANSPORTATION

SIGN DESIGN

SCALE: SHEET 1 OF 1 SHEETS STA. TO STA.

|                           |           |           |              |           |
|---------------------------|-----------|-----------|--------------|-----------|
| F.A.P. RTE.               | SECTION   | COUNTY    | TOTAL SHEETS | SHEET NO. |
| 303                       | (1,1-1)SG | WINNEBAGO | 14           | 6         |
| CONTRACT NO. 64V38        |           |           |              |           |
| ILLINOIS FED. AID PROJECT |           |           |              |           |

**GENERAL NOTES**

DESIGN: AASHTO Standard Specifications for Structural Supports for Highway Signs, Luminaires and Traffic Signals. ("AASHTO Specifications")

CONSTRUCTION: Current (at time of letting) Illinois Department of Transportation Standard Specifications for Road and Bridge Construction, Supplemental Specifications and Special Provisions. ("Standard Specifications")

LOADING: 90 M.P.H. WIND VELOCITY

WALKWAY LOADING: Dead load plus 500 lbs. concentrated live load.

DESIGN STRESSES:  
Field Units  
 $f_c = 3,500$  p.s.i.  
 $f_y = 60,000$  p.s.i. (reinforcement)

WELDING: All welds to be continuous unless otherwise shown. All welding to be done in accordance with current AWS D1.1 and D1.2 Structural Welding Codes (Steel and Aluminum) and the Standard Specifications.

MATERIALS: Aluminum Alloys as shown throughout plans. All Structural Steel Pipe shall be ASTM A53 Grade B or A500 Grade B or C. If A500 pipe is substituted for A53, then the outside diameter shall be as detailed and wall thickness greater than or equal to A53. All Structural Steel Plates and Shapes shall conform to AASHTO M270 Gr. 36, Gr. 50 or Gr. 50W\*. Stainless steel for shims, sleeves and handhole covers shall be ASTM A240, Type 302 or 304, or another alloy suitable for exterior exposure and acceptable to the Engineer.

The steel pipe and stiffening ribs at the base plate for the column shall have a minimum longitudinal Charpy V-Notch (CVN) energy of 15 lb.-ft. at 40° F. (Zone 2) before galvanizing.

FASTENERS FOR ALUMINUM TRUSSES: All bolts noted as "high strength" must satisfy the requirements of AASHTO M164 (ASTM A325), or approved alternate, and must have matching lock nuts. Threaded studs for splices (if Members interfere) must satisfy the requirements of ASTM A449, ASTM A193, Grade B7, or approved alternate, and must have matching lock nuts. Bolts and lock nuts not required to be high strength must satisfy the requirements of ASTM A307. All bolts and lock nuts must be hot dip galvanized per AASHTO M232. The lock nuts must have nylon or steel inserts. A stainless steel flat washer conforming to ASTM A240 Type 302 or 304, is required under both head and nut or under both nuts where threaded studs are used. High strength bolt installation shall conform to Article 505.04 (f) (2)d of the IDOT Standard Specifications for Road and Bridge Construction. Rotational capacity ("ROCAP") testing of bolts will not be required.

U-BOLTS AND EYEBOLTS: U-Bolts and Eyebolts must be produced from ASTM A276 Type 304, 304L, 316 or 316L, Condition A, cold finished stainless steel, or an equivalent material acceptable to the Engineer. All nuts for U-Bolts and Eyebolts must be lock nuts equivalent to ASTM A307 with nylon or steel inserts and hot dip galvanized per AASHTO M232. A stainless steel flat washer conforming to ASTM A240, Type 302 or 304, is required under each U-Bolt and Eyebolt lock nut.

GALVANIZING: All Steel Grating, Plates, Shapes and Pipe shall be Hot Dip Galvanized after fabrication in accordance with AASHTO M111. Painting is not permitted.

ANCHOR RODS: Shall conform to ASTM F1554 Gr. 105.

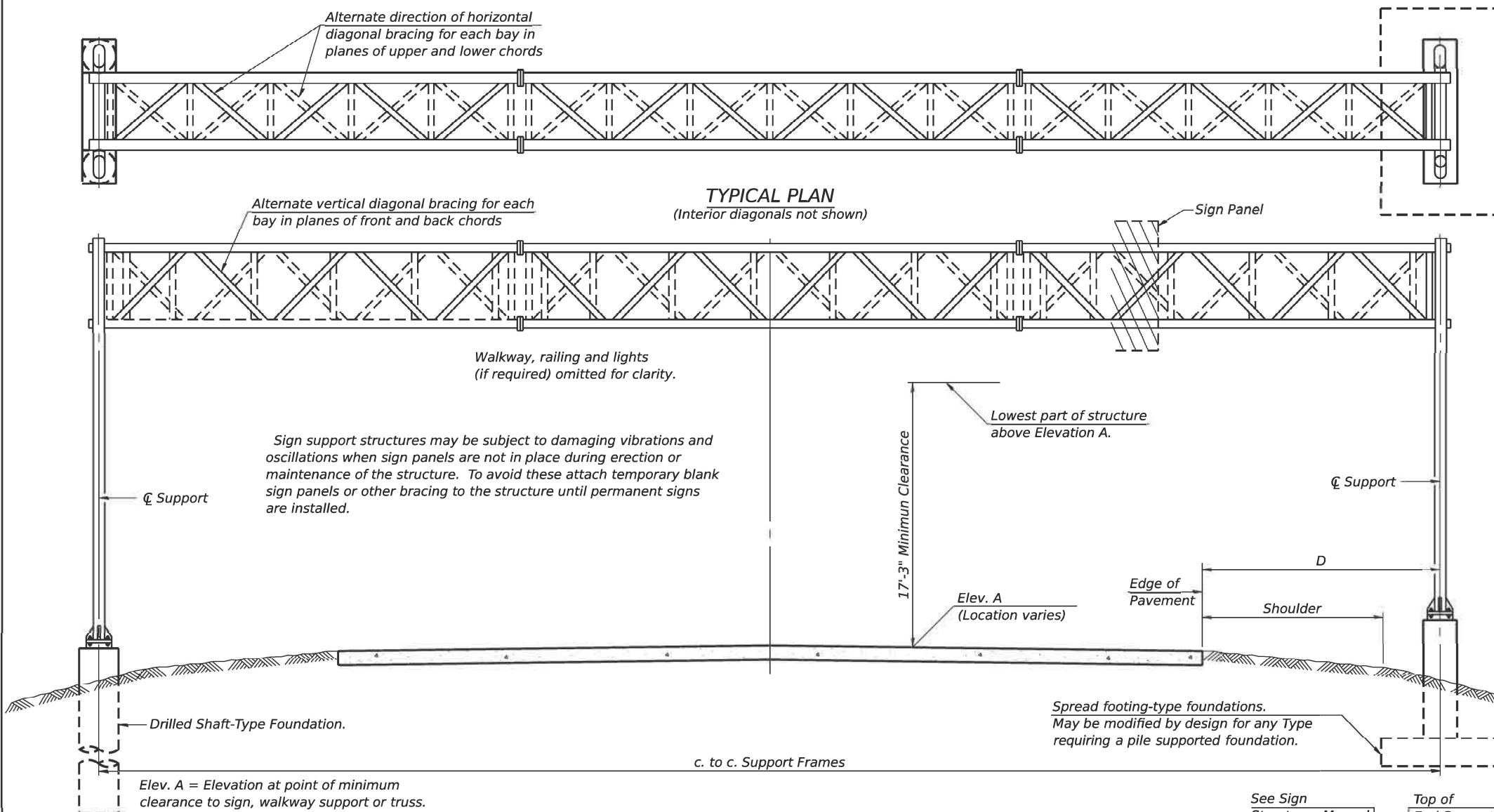
CONCRETE SURFACES: All concrete surfaces above an elevation 6" below the lowest final ground line at each foundation shall be cleaned and coated with Concrete Sealer in accordance with the Standard Specifications.

REINFORCEMENT BARS: Reinforcement Bars designated (E) shall be epoxy coated in accordance with the Standard Specifications.

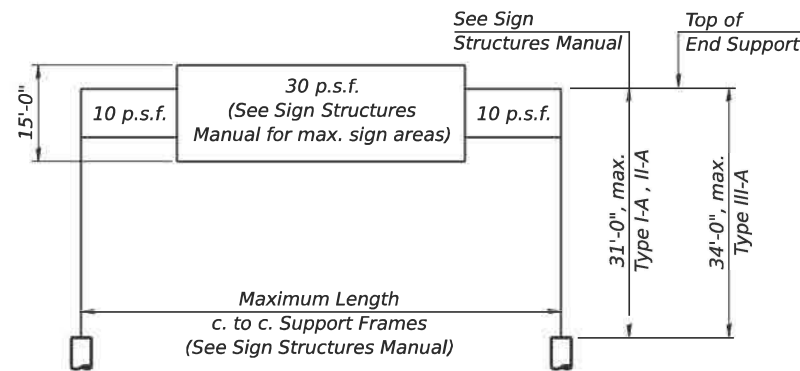
FOUNDATIONS: The contract unit price for Concrete Foundations and Drilled Shaft Concrete Foundations shall include reinforcement bars complete in place.

**TOTAL BILL OF MATERIAL**

| ITEM                                   | UNIT     | TOTAL |
|--|----------|-------|
| OVERHEAD SIGN STRUCTURE SPAN TYPE II-A | Foot     | 85    |
| CONCRETE FOUNDATIONS                   | Cu. Yds. | 35.3  |



**TYPICAL ELEVATION**  
(Looking at Face of Signs\*\*)



**DESIGN WIND LOADING DIAGRAM**

Parameters shown are basis for I.D.O.T. Standards and Sign Manual Tables. Installations not within dimensional limits shown require special analysis for all components.

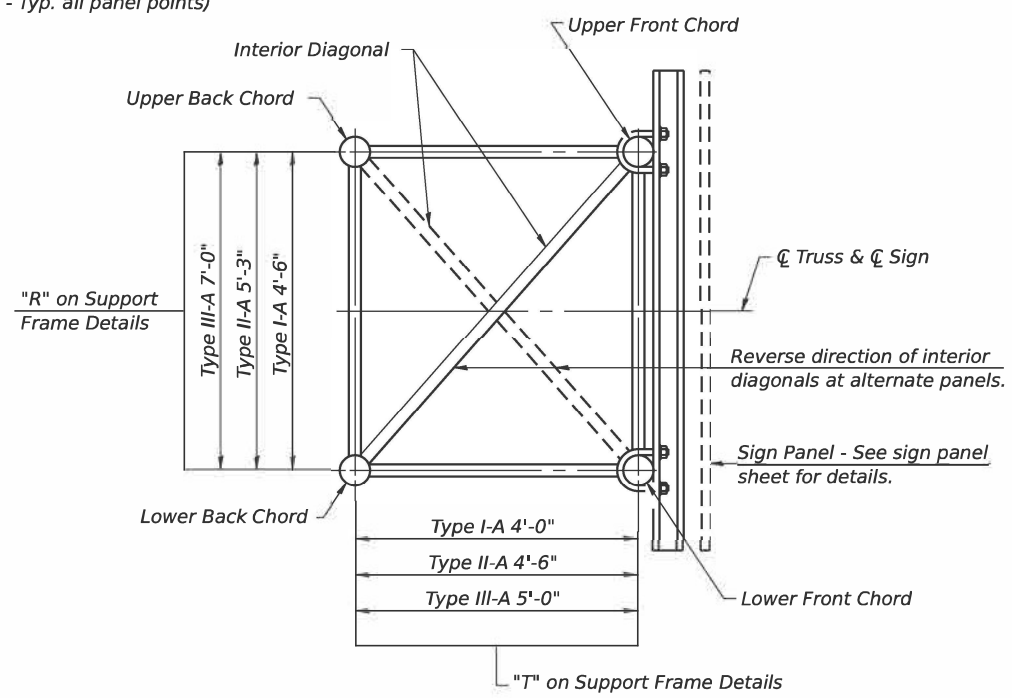
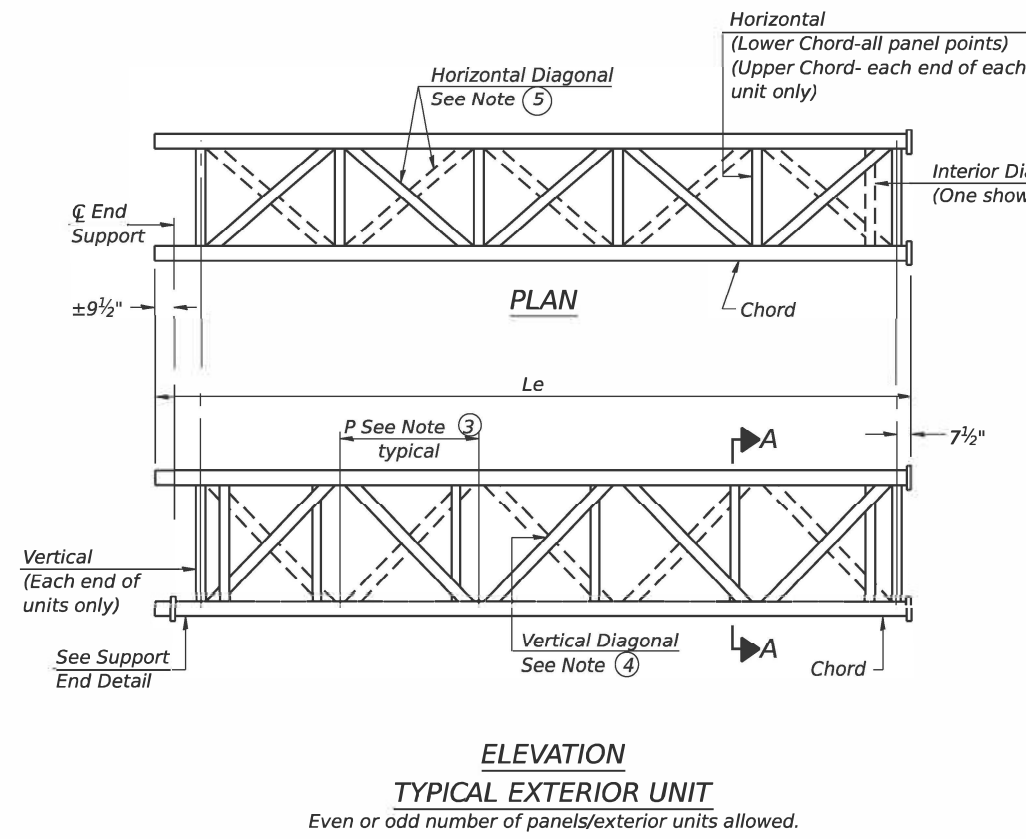
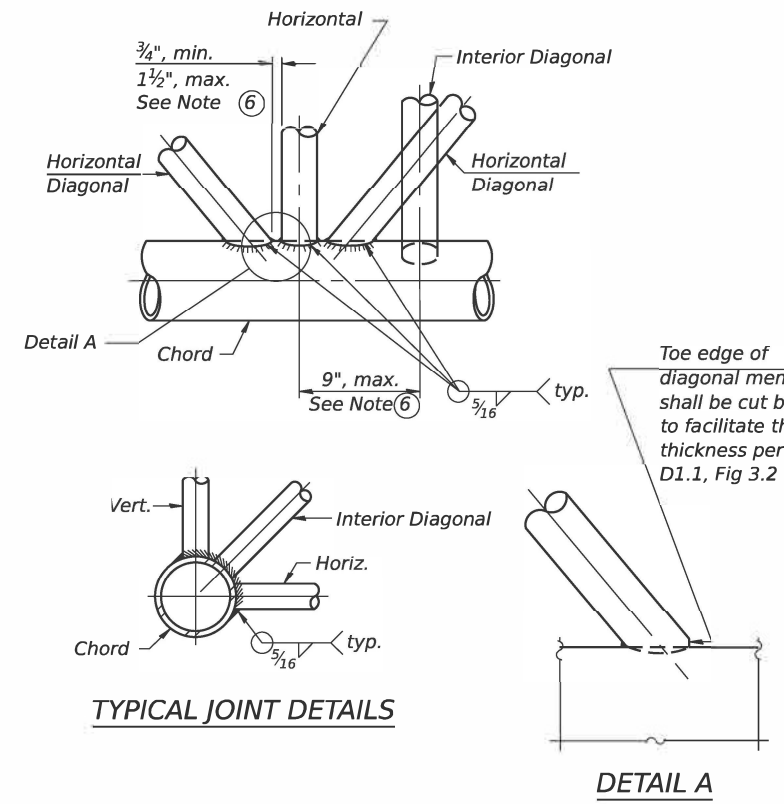
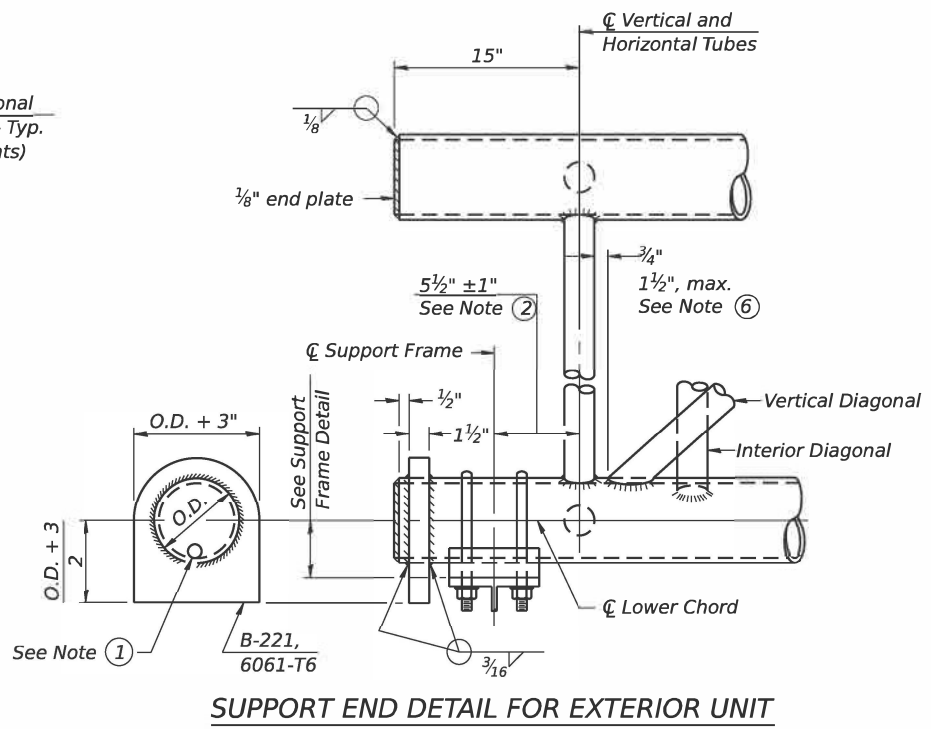
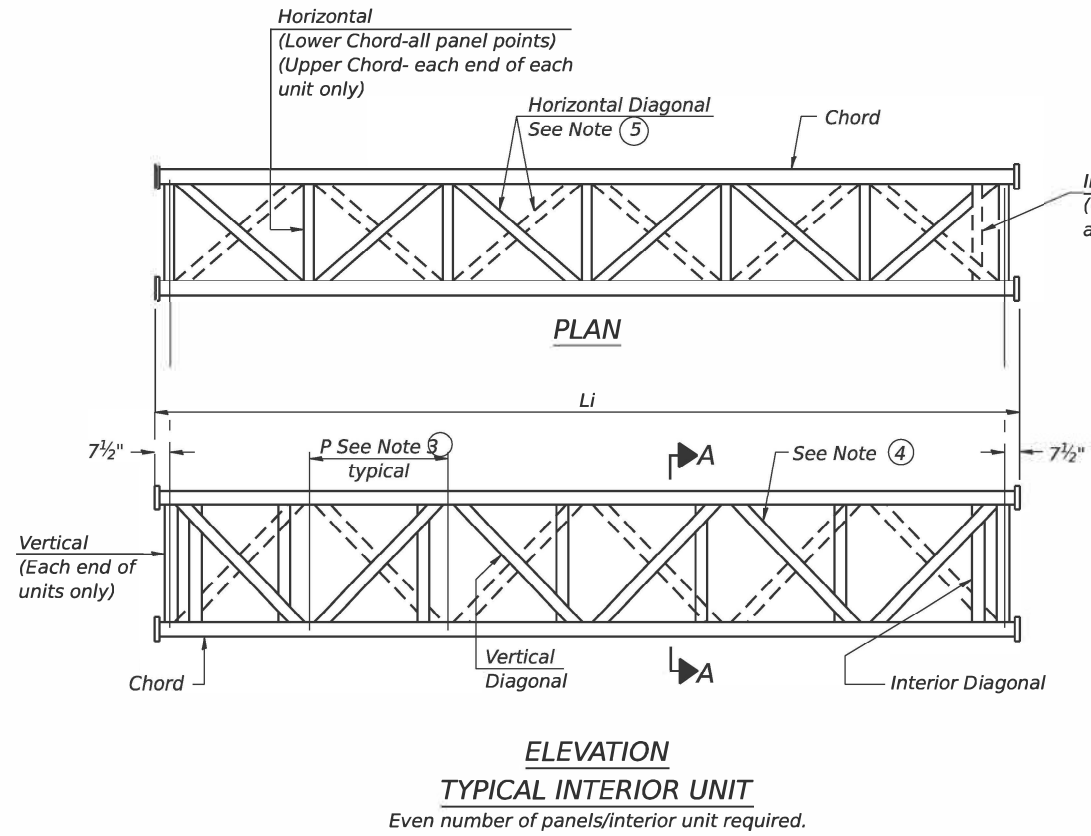
| Structure Number | Station   | Design Truss Type | c. to c. Supports | Elev. A | Dim. D     | Height of Tallest Sign | Total Sign Area |
|------------------|-----------|-------------------|-------------------|---------|------------|------------------------|-----------------|
| 2S101S251011.3   | 592+25.00 | II-A              | 85'-0"            | 725.38  | 15'-1 1/8" | 10'-0"                 | 2BB.3 SF        |

- \*\* Looking upstation for structures with signs both sides.
- \* If M270 Gr. 50W (M222) steel is proposed, chemistry for plate to be used shall first be approved by the Engineer as suitable for galvanizing and welding.

**exp.**
  
 EXP  
 MAEN A. FARHAT, PHD, P.E., S.E.  
 081-008545

SIGNATURE: *Maen A. Farhat*  
 DATE: 08/25/2025  
 EXPIRES: 11/30/2026

SIGNATURE AND SEAL 7-14  
 APPLY TO DRAWINGS: 117H



- ① Contractor may alternatively use standard aluminum drive-fit cap to close end. 1/2" Ø drain hole in end plate/drive-fit cap. (Typ. at ends of all chords)
- ② 5 1/2" end dimension may vary by ±1" to provide uniform panel spacing (P).
- ③ Panel spacing (P) shall be uniform for entire truss and between 4'-0" and 5'-0" for Type I-A or 4'-0" and 5'-6" for Types II-A and III-A.
- ④ Vertical Diagonals in front and back face shall alternate.
- ⑤ Hidden lines show wind bracing alternates direction between planes of top and bottom chords.
- ⑥ All diagonals shall be detailed for minimum offset from the panel point based on the following: Offset shall be such as to provide a 3/4" minimum to 1 1/2" maximum clearance between any diagonal and any horizontal or vertical member, and to provide clearance for U-bolt connections of signs or walkway brackets.

SECTION A-A

MODEL: 2D SHEET H  
FILE NAME: C:\PW\WORK\EXP-PW-BENTLEY.COM\_EXP-PW-010000006117B-D284M38-SHT-ST-TRUSS DETAILS 1.DGN



|                               |                   |             |             |
|-------------------------------|-------------------|-------------|-------------|
| OS-A-2                        | 5-15-2023         | 1           | ADDED SHEET |
| USER NAME = SalasL            | DESIGNED - MSH    | REVISED - 1 | 08/25/2025  |
| DRAWN - MSH                   | CHECKED - MAF     | REVISED -   |             |
| PLOT SCALE = 0.16666633 / IN. | DATE - 08/25/2025 | REVISED -   |             |
| PLOT DATE = 8/22/2025         |                   | REVISED -   |             |

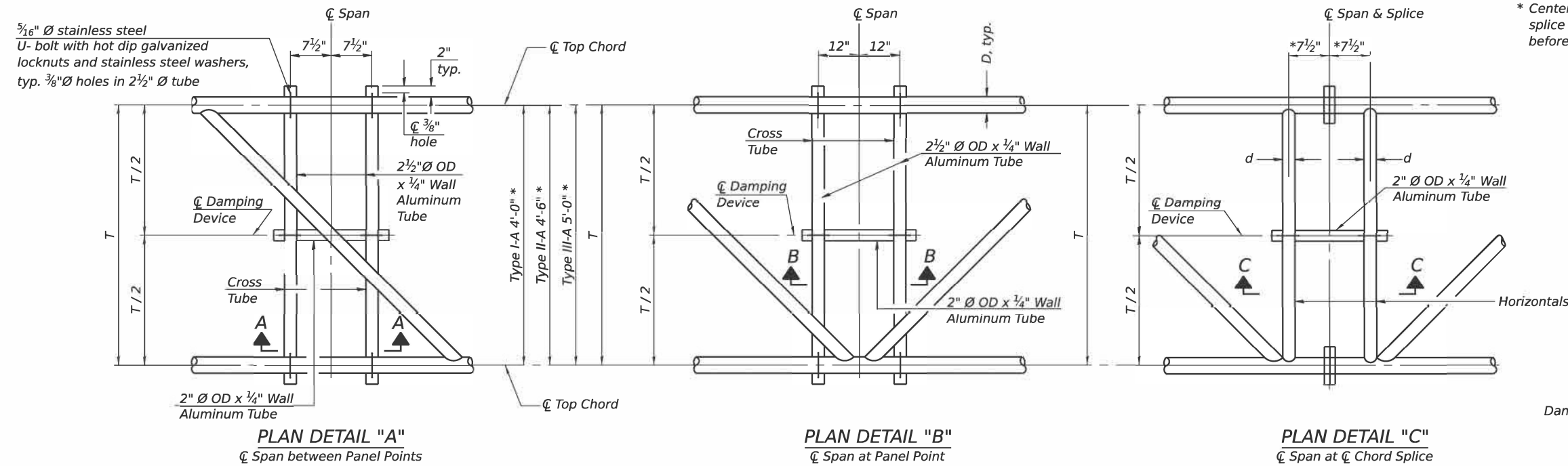
STATE OF ILLINOIS  
DEPARTMENT OF TRANSPORTATION

OVERHEAD SIGN STRUCTURES - ALUMINUM TRUSS  
DETAILS FOR TRUSS TYPES I-A, II-A AND III-A

SCALE: SHEET 2 OF 8 SHEETS STA. TO STA.

|                  |         |           |                    |           |
|------------------|---------|-----------|--------------------|-----------|
| F.A.P. RTE.      | SECTION | COUNTY    | TOTAL SHEETS       | SHEET NO. |
| 303              | (1,1)SG | WINNEBAGO | 14                 | 8         |
| ILLINOIS         |         |           | CONTRACT NO. 64V38 |           |
| FED. AID PROJECT |         |           |                    |           |



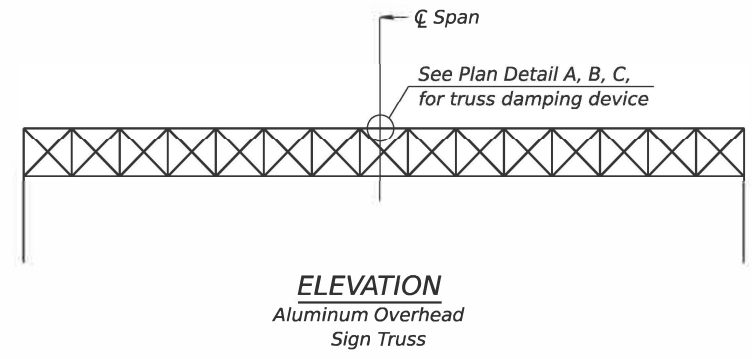
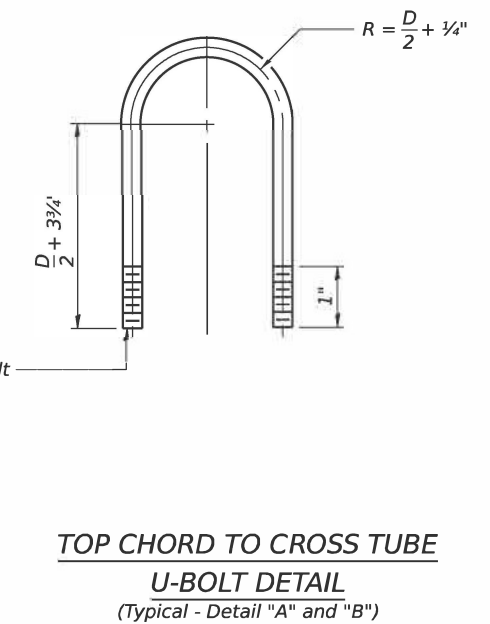
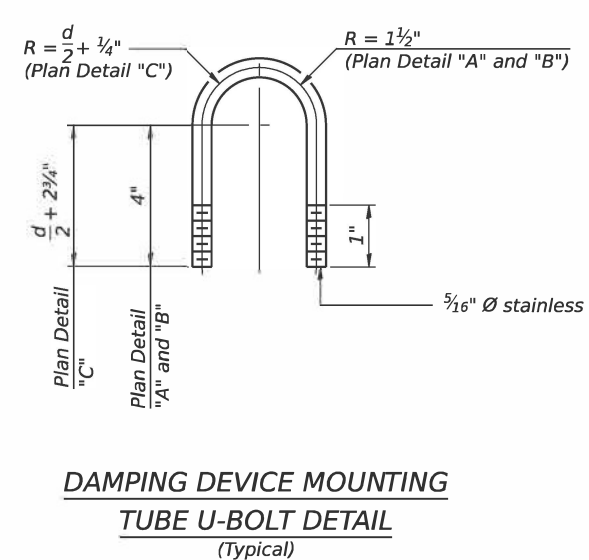
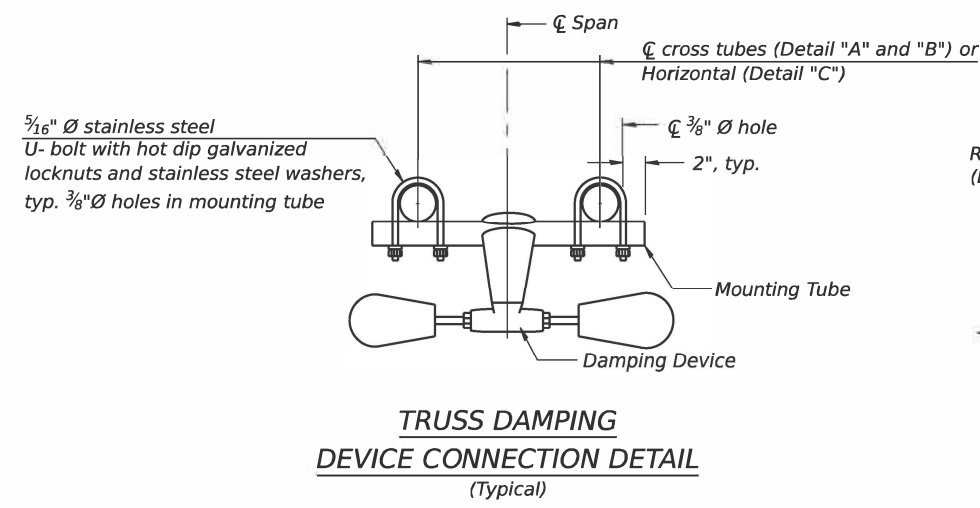
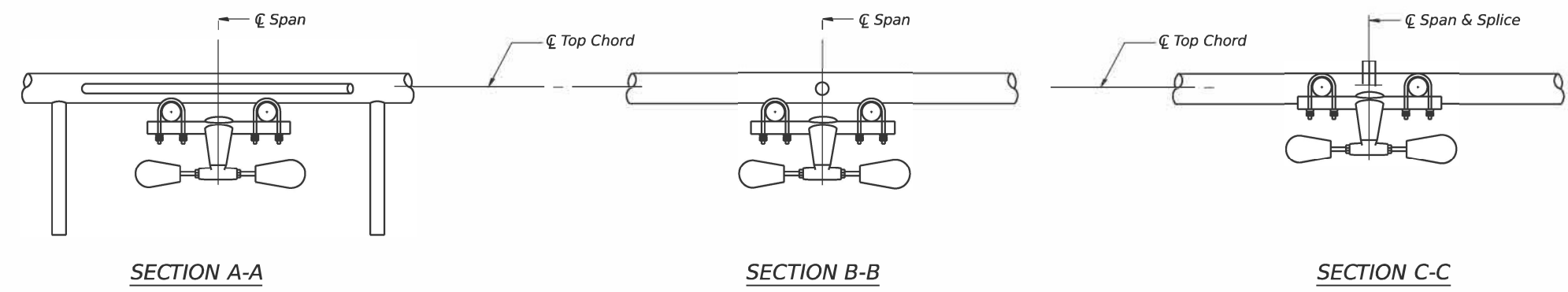


\* Center of horizontal to center of splice dimension may vary. Verify before drilling holes in mounting tube.

**NOTES**

Damper: One damper per truss. (31 lbs. minimum Stockbridge-Type Aluminum - 29" minimum between ends of weights) Cost included in Overhead Sign Structure...

Materials: Aluminum tubes shall be ASTM B221 alloy 6061 temper T6. Cost included in Overhead Sign Structure...



MODEL: 2D SHEET H  
 FILE NAME: C:\PW\WORK\EXP-PW-BENTLEY.COM\_EXP-PW-010030508\117D-0264M38-SHT-ST-DAMPING DEVICE.DGN



|                                 |                   |             |             |
|---------------------------------|-------------------|-------------|-------------|
| USER NAME = Saksl               | DESIGNED - MSH    | REVISED - 1 | ADDED SHEET |
| PLOT SCALE = 0.16666633 / 1 IN. | DRAWN - MSH       | REVISED - 1 | 08/25/2025  |
| PLOT DATE = 8/22/2025           | CHECKED - MAF     | REVISED -   |             |
|                                 | DATE - 08/25/2025 | REVISED -   |             |

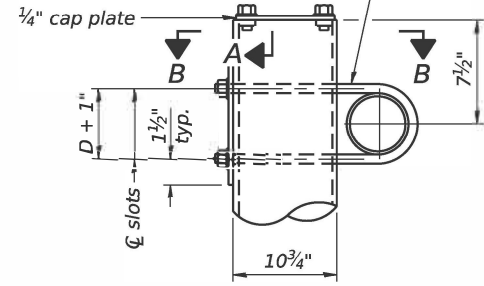
**STATE OF ILLINOIS**  
**DEPARTMENT OF TRANSPORTATION**

**OVERHEAD SIGN STRUCTURE**  
**DAMPING DEVICE**

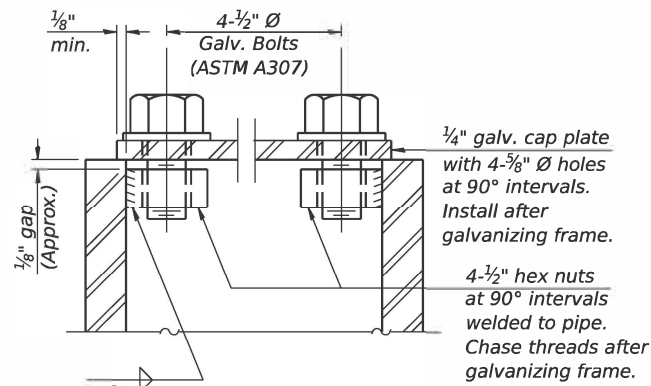
SCALE: SHEET 4 OF 8 SHEETS STA. TO STA.

| F.A.P. RTE.               | SECTION   | COUNTY    | TOTAL SHEETS | SHEET NO. |
|---------------------------|-----------|-----------|--------------|-----------|
| 303                       | (1,1-1)SG | WINNEBAGO | 14           | 10        |
| CONTRACT NO. 64V38        |           |           |              |           |
| ILLINOIS FED. AID PROJECT |           |           |              |           |

3/4" Ø stainless steel U-bolt.  
Provide two washers and two hexagon locknuts. (4)  
1 3/16" x 2" slots on 10" Ø pipe.  
(4 slots required per pipe)

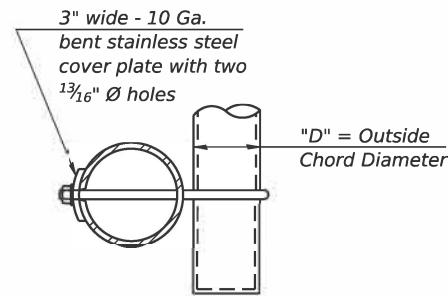


DETAIL A

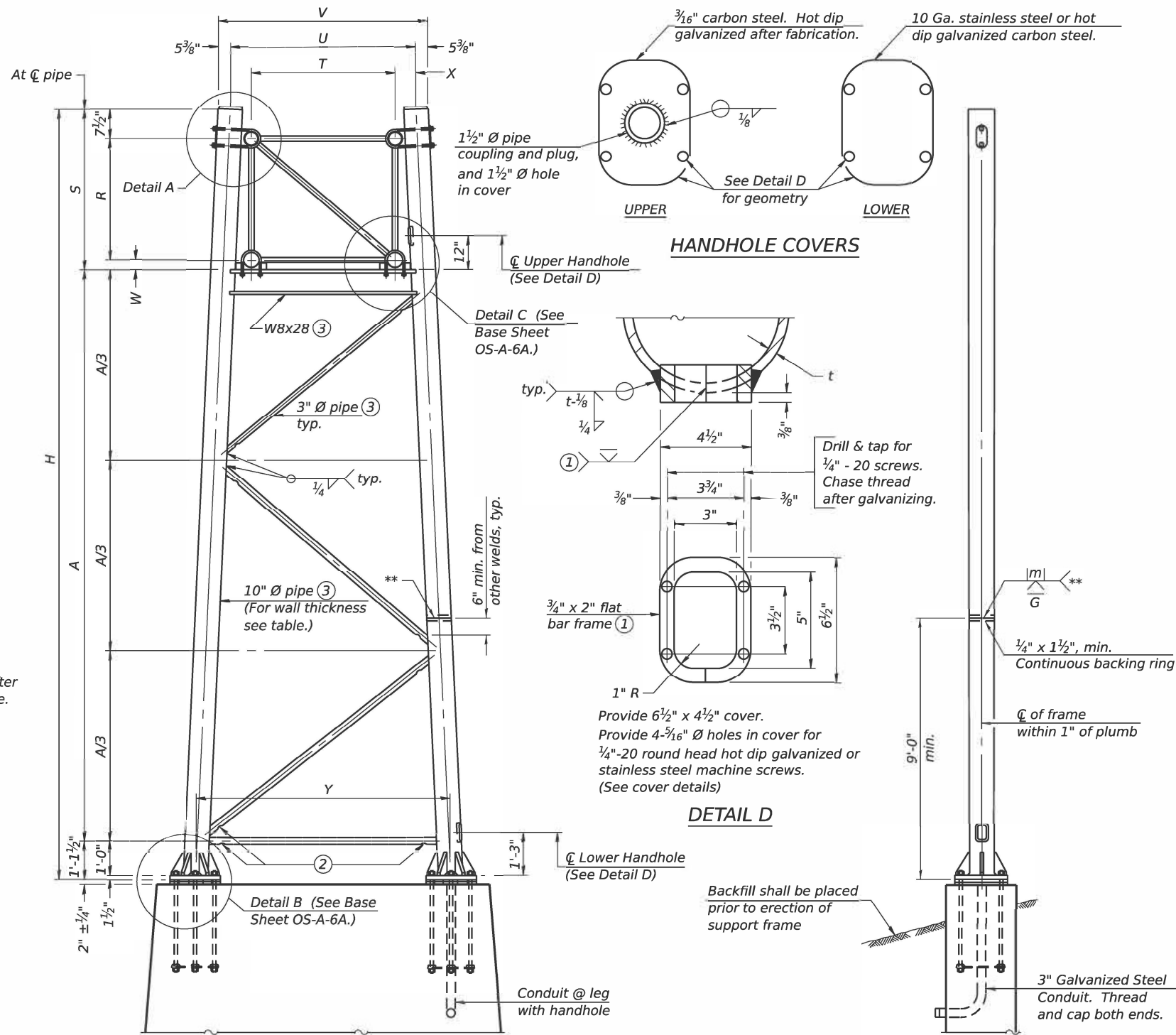


SECTION A-A

As an alternate to bolts, may use galvanized drive-fit caps installed after galvanizing frame.



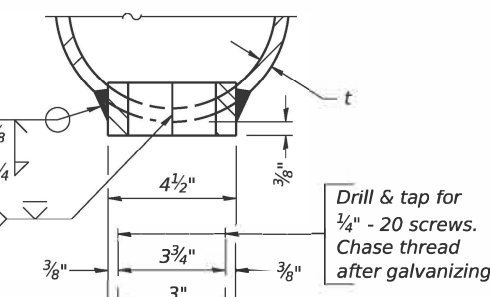
SECTION B-B



For Foundation Details, see base sheet OS-F3 (Spread Footing) or OS4-F3 (Drilled Shaft).

SIDE ELEVATION

HANDHOLE COVERS



DETAIL D

Provide 6 1/2" x 4 1/2" cover. Provide 4-3/16" Ø holes in cover for 1/4"-20 round head hot dip galvanized or stainless steel machine screws. (See cover details)

END ELEVATION

Support Design Loads: See Base Sheet OS-A-1 for design and loading criteria.  
Load combinations checked include deadload plus:  
a) 100% wind normal to sign, 20% parallel to sign  
b) 60% wind normal to sign, 30% parallel to sign

- ① In lieu of fabricated handhole frame as shown, may cut from 2" plate (rolling direction vertical). All cut faces to be ground to ANSI Roughness of 500µ in or less.
- ② Galvanizing vent holes of adequate size shall be provided on underside at each end of bracing pipes. Alternately, holes may be provided in wall of pipe column. All vent holes shall be drilled and de-burred, typ.
- ③ Steel pipe, plate, carbon steel handhole covers and rolled sections shall be hot dip galvanized after fabrication. Painting is not permitted. See Base Sheet OS-A-1.
- ④ See General Notes for fasteners.
- ⑤ Dimensions shown are based on selection criteria in the Sign Structures Manual. Nonstandard applications must have dimensions verified or amended as appropriate.
- ⑥ "H" based on 15'-0" or actual sign height, whichever is greater.

| Truss Type | Dimensions |           |       |       |            |        |        |       |
|------------|------------|-----------|-------|-------|------------|--------|--------|-------|
|            | R          | S         | T     | U     | V          | W      | X      | Y     |
| I-A        | 4'-6"      | 5'-5 1/2" | 4'-0" | 5'-6" | 6'-4 3/4"  | 4"     | 9"     | 8'-3" |
| II-A ⑤     | 5'-3"      | 6'-3 3/4" | 4'-6" | 6'-1" | 6'-11 3/4" | 4 3/4" | 9 1/2" | 8'-3" |

**10" Ø PIPE TRUSS SUPPORT FRAME**  
\*\* One butt welded joint is allowed only on one post per support frame. If used, weld procedure must be pre-approved by Engineer and joint shall receive 100% RT or UT (tension criteria) at Contractor's expense.

| Structure Number | Station   | Support |       | Truss Type | Pipe Wall Thickness | H ⑥        | A          |
|------------------|-----------|---------|-------|------------|---------------------|------------|------------|
|                  |           | Left    | Right |            |                     |            |            |
| 2S101S251R011.3  | 592+25.00 | X       |       | II-A       | 0.365               | 28'-1 1/4" | 20'-8 1/2" |
|                  | 592+25.00 |         | X     | II-A       | 0.365               | 24'-5 1/8" | 17'-0 3/8" |
|                  |           |         |       |            |                     |            |            |
|                  |           |         |       |            |                     |            |            |
|                  |           |         |       |            |                     |            |            |
|                  |           |         |       |            |                     |            |            |
|                  |           |         |       |            |                     |            |            |
|                  |           |         |       |            |                     |            |            |
|                  |           |         |       |            |                     |            |            |

MODEL: 2D SHEET H  
FILE NAME: C:\PW\WORK\EXP-PW\BENTLEY.COM\_EXP-PW-010030506\117E-D284M38-SHT-ST-SUPPORT\_FRAME.DGN

OS-A-6

5-15-2023

① ADDED SHEET



|                               |                   |                        |
|-------------------------------|-------------------|------------------------|
| USER NAME = SalasL            | DESIGNED = MSH    | REVISED = ① 08/25/2025 |
| PLOT SCALE = 0.16666633 / IN. | DRAWN = MSH       | REVISED =              |
| PLOT DATE = 8/22/2025         | CHECKED = MAF     | REVISED =              |
|                               | DATE = 08/25/2025 | REVISED =              |

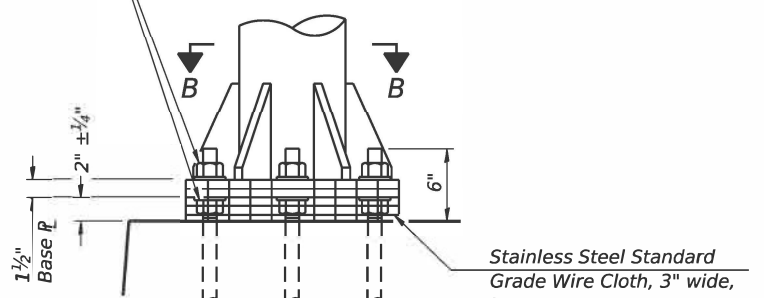
STATE OF ILLINOIS  
DEPARTMENT OF TRANSPORTATION

OVERHEAD SIGN STRUCTURE  
SUPPORT FRAME FOR ALUMINUM TRUSS

|                           |           |           |              |           |
|---------------------------|-----------|-----------|--------------|-----------|
| F.A.P. RTE.               | SECTION   | COUNTY    | TOTAL SHEETS | SHEET NO. |
| 303                       | (1.1-1)SG | WINNEBAGO | 14           | 11        |
| CONTRACT NO. 64V38        |           |           |              |           |
| ILLINOIS FED. AID PROJECT |           |           |              |           |

SCALE: SHEET 5 OF 8 SHEETS STA. TO STA.

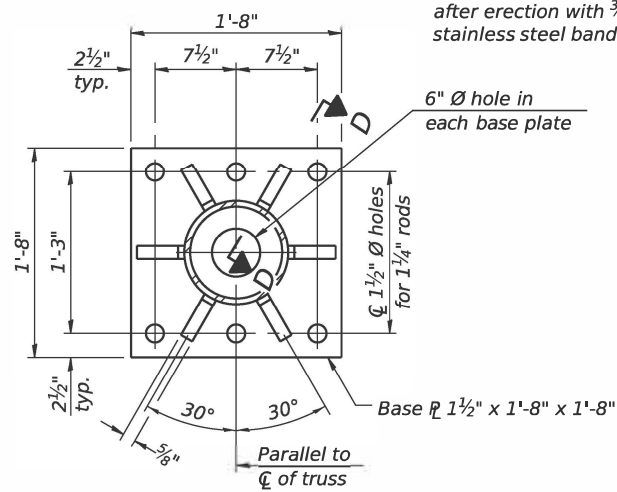
Hexagon locknut and washer (top), leveling nut and washer (bottom). Galvanize per AASHTO M232. Nuts shall each be tightened against base plate with 200 lb.-ft. minimum torque.



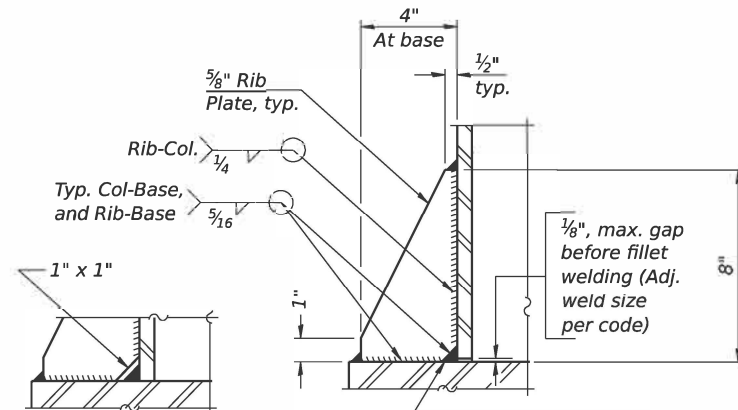
**DETAIL B**

Ribs shall be cut to fit slope of pipe.

Stainless Steel Standard Grade Wire Cloth, 3" wide, 1/4" maximum opening with a minimum wire diameter of AWG. No. 16 with a minimum 2" lap. Secure to base plate after erection with 3/4" stainless steel banding.



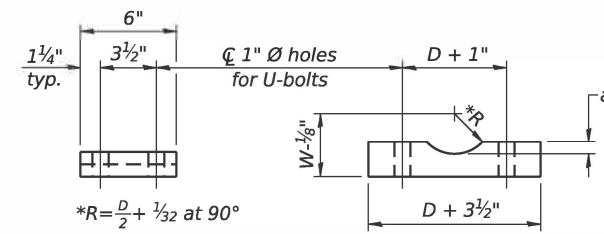
**SECTION B-B**



**SECTION D-D**

\*\* Alternate detail if welding col. to base plate first, then snip inside corner of ribs. Terminate weld on rib 1/4" from snip.

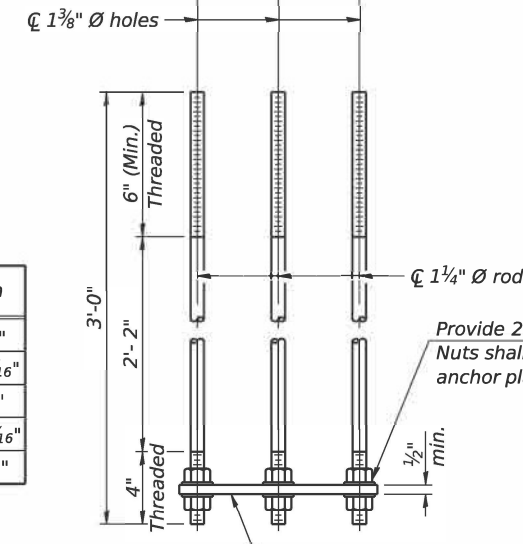
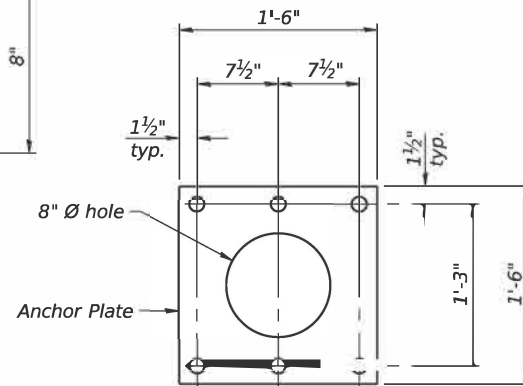
No snip req'd. at rib inside corner if placed before col. to base plate welding.\*\*



**SADDLE SHIM DETAIL**

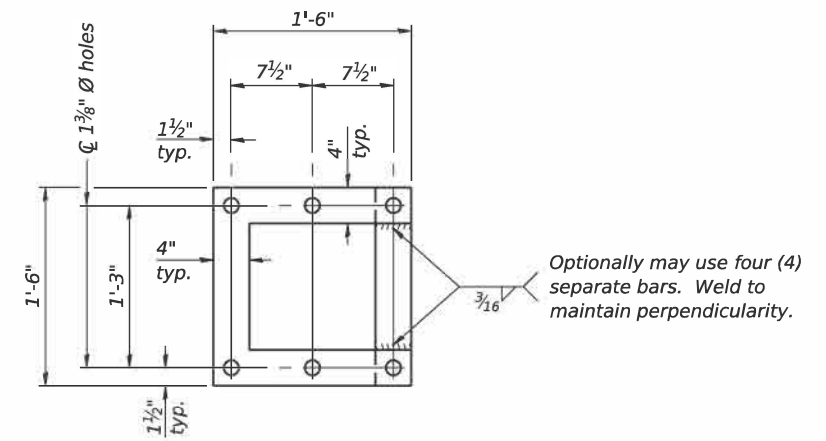
ASTM B26 Alloy 356-F or ASTM B209 Alloy 6061-T651 (4 required per sign truss)

| Truss Chord Nominal Dia. | a       |
|--------------------------|---------|
| 5"                       | 3/4"    |
| 5 1/2"                   | 1 3/16" |
| 6"                       | 7/8"    |
| 6 1/2"                   | 1 5/16" |
| 7"                       | 1"      |



**ANCHOR ROD DETAIL**  
Spread Footing Foundation

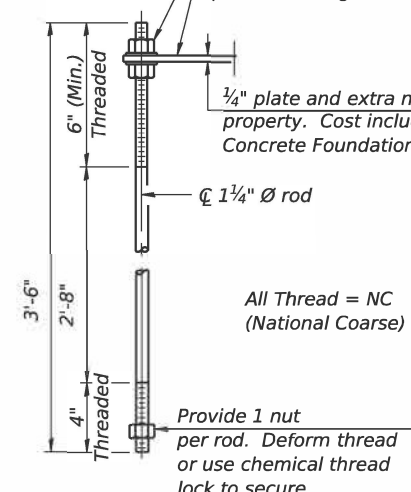
All Thread = NC (National Coarse)



**POSITIONING PLATE(S)**

Optionally may use four (4) separate bars. Weld to maintain perpendicularity.

At each location, provide 1/4" thick positioning plate(s) and six (6) additional nuts to be used with leveling nuts to maintain anchor bolts position during concrete placement.



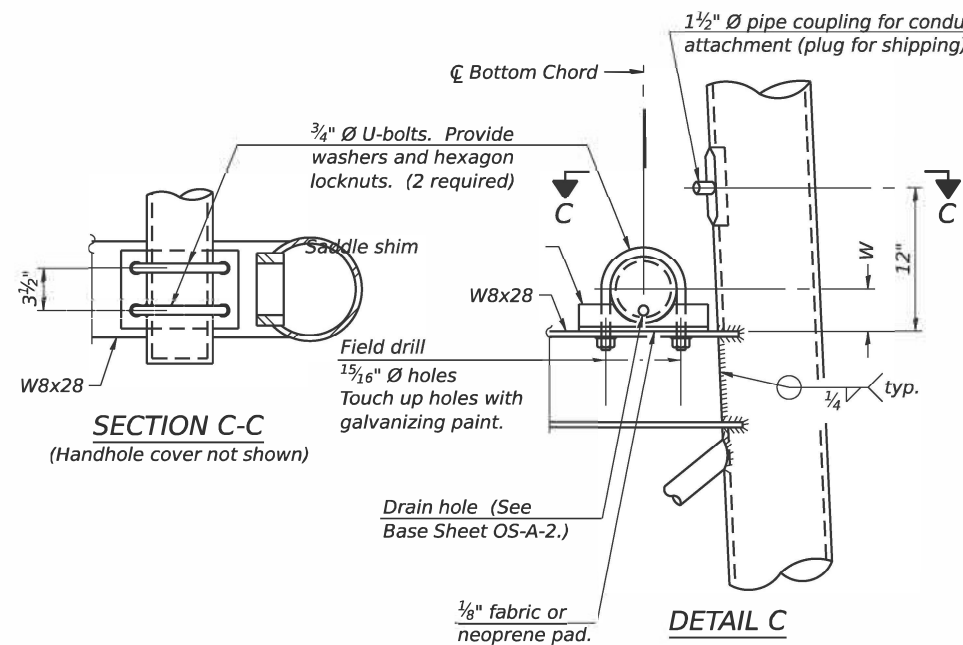
**ANCHOR ROD DETAIL**  
Drilled Shaft Foundation

All Thread = NC (National Coarse)

Provide 1 nut per rod. Deform thread or use chemical thread lock to secure.

Anchor rods shall conform to ASTM F1554 Grade 105. Galvanize upper 12" minimum per AASHTO M232. No welding shall be permitted on rods.

**10" Ø PIPE SUPPORT FRAME DETAILS**



**SECTION C-C**

(Handhole cover not shown)

**DETAIL C**

MODEL: 2D SHEET H  
FILE NAME: C:\PW\WORK\EXP-PW-BENTLEY.COM\_EXP-PW-010030506\117F-0284M38-SHT-ST-SUPPORT FRAME DETAILS.DGN

OS-A-6A 5-15-2023

1 ADDED SHEET

|                               |                   |             |            |
|-------------------------------|-------------------|-------------|------------|
| USER NAME = SalasL            | DESIGNED - MSH    | REVISED - 1 | 08/25/2025 |
| PLOT SCALE = 0.16666633 / IN. | DRAWN - MSH       | REVISED -   |            |
| PLOT DATE = 8/22/2025         | CHECKED - MAF     | REVISED -   |            |
|                               | DATE - 08/25/2025 | REVISED -   |            |

STATE OF ILLINOIS  
DEPARTMENT OF TRANSPORTATION

OVERHEAD SIGN STRUCTURES  
SUPPORT FRAME DETAILS - ALUMINUM TRUSS

SCALE: SHEET 6 OF 8 SHEETS STA. TO STA.

|                           |           |           |              |           |
|---------------------------|-----------|-----------|--------------|-----------|
| F.A.P. RTE.               | SECTION   | COUNTY    | TOTAL SHEETS | SHEET NO. |
| 303                       | (1,1-1)SG | WINNEBAGO | 14           | 12        |
| CONTRACT NO. 64V38        |           |           |              |           |
| ILLINOIS FED. AID PROJECT |           |           |              |           |



