

INDEX OF SHEETS

- 1 COVER SHEET
- 2 GENERAL NOTES
- 3 - 5 SUMMARY OF QUANTITIES
- 6 SCHEDULES OF QUANTITIES
- 7 TYPICAL SECTIONS
- 8 - 11 STAGING PLAN
- 12 ROADWAY PLAN
- 13 - 24 STRUCTURAL PLAN
- 25 - 26 DETAILS

HIGHWAY STANDARDS

- 000001-09 STANDARD SYMBOLS, ABBREVIATIONS AND PATTERNS
- 001001-02 AREAS OF REINFORCEMENT BARS
- 001006 DECIMAL OF AN INCH AND OF A FOOT
- 701001-02 OFF-RD OPERATIONS, 2L, 2W, MORE THAN 15' (4.5M) AWAY
- 701006-05 OFF-RD OPERATIONS, 2L, 2W, 15' (4.5M) TO 24" (600MM) FROM PAVEMENT EDGE
- 701011-04 OFF-RD MOVING OPERATIONS 2L, 2W, DAY ONLY
- 701201-05 LANE CLOSURE, 2L, 2W, DAY ONLY, FOR SPEEDS ≥ 45 MPH
- 701301-04 LANE CLOSURE, 2L, 2W SHORT TIME OPERATIONS
- 701311-03 LANE CLOSURE 2L, 2W, MOVIN GOPERATIONS - DAY ONLU
- 701321-19 LANE CLOSURE, 2L, 2W, BRIDGE REPAIR WITH BARRIER
- 701901-11 TRAFFIC CONTROL DEVICES
- 704001-08 TEMPORARY CONCRETE BARRIER

**STATE OF ILLINOIS
DEPARTMENT OF TRANSPORTATION**

**PROPOSED
HIGHWAY PLANS**

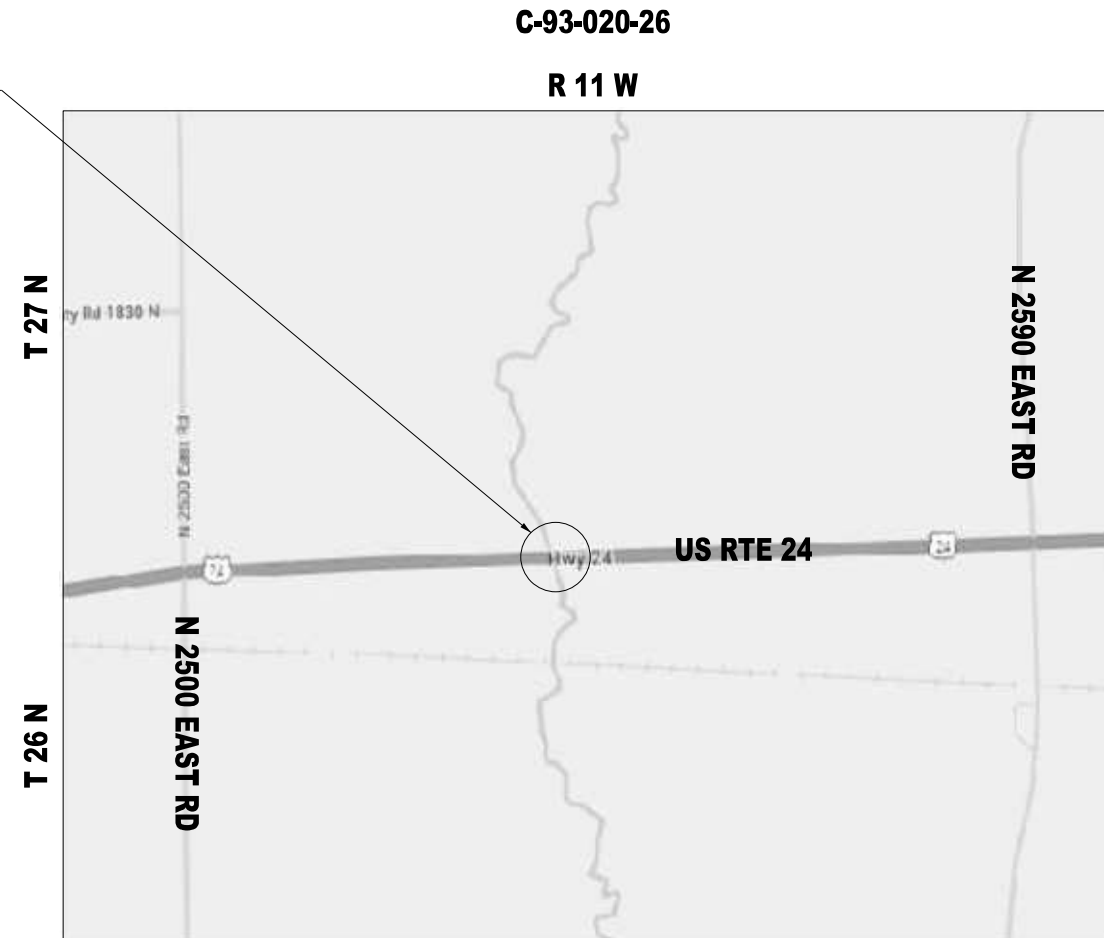
**FAP 317 (US RTE 24)
SECTION (19BR-1)BRR
BRIDGE REPAIR
IROQUOIS COUNTY**

F.A.P. RTE.	SECTION	COUNTY	TOTAL SHEETS	SHEET NO.
317	(19-BR-1)BRR	IROQUOIS	26	1
		ILLINOIS	CONTRACT NO. 66R61	

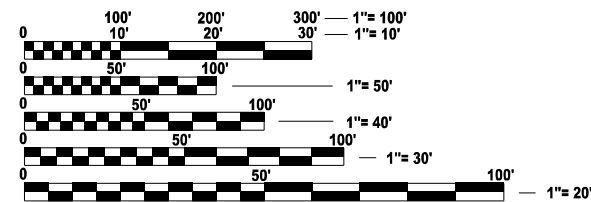
D-93-004-26



**PROJECT LOCATION
S.N. 038-0037
(STA. 2705+3.14)
CARRYING F.A.P. ROUTE 317(US RTE 24)
OVER RAYMOND CREEK
2.7 MI. EAST OF IL 1**



**LOCATION MAP
NOT TO SCALE**



FULL SIZE PLANS HAVE BEEN PREPARED USING STANDARD ENGINEERING SCALES. REDUCED SIZED PLANS WILL NOT CONFORM TO STANDARD SCALES. IN MAKING MEASUREMENTS ON REDUCED PLANS, THE ABOVE SCALES MAY BE USED.

**J.U.L.I.E.
JOINT UTILITY LOCATION INFORMATION FOR EXCAVATION
1-800-892-0123
OR 811**

**PROJECT ENGINEER: JUNIOR SENAT P.E.
UNIT CHIEF: RON WOODSHANK
DISTRICT NO.3 (815) 434-6131
CONTRACT NO. 66R61**

C-93-020-26

R 11 W

FUNCTIONAL CLASSIFICATION

PRINCIPAL ARTERIAL
F.A.P. ROUTE 317 (US RTE 24)
2025 ADT = 4,050
P.V.=87.7% S.U.=3.0% M.U.=9.3%

**STATE OF ILLINOIS
DEPARTMENT OF TRANSPORTATION**

SUBMITTED February 4, 2026

Trisha Thompson REGIONAL ENGINEER

March 20, 2026

Scott A. [Signature] ENGINEER OF DESIGN AND ENVIRONMENT

March 20, 2026

[Signature] DIRECTOR OF HIGHWAYS PROJECT IMPLEMENTATION

**PRINTED BY THE AUTHORITY
OF THE STATE OF ILLINOIS**



GENERAL NOTES

THE FOLLOWING RATES OF APPLICATION HAVE BEEN USED IN CALCULATING PLAN QUANTITIES:

AGGREGATE SHOULDERS	2.05	TON / CU YD
SHORT TERM PAVEMENT MARKING	10	FT / 100 FT OF APPLICATION

COMMITMENTS

THE ENGINEER SHALL RECORD THE DECK SLAB REPAIR LOCATION, PATCH SIZE AND QUANTITIES ON THE DECK SLAB REPAIR "AS BUILT" PLAN DETAILS. WHEN RECORDED, THE ENGINEER SHALL FORWARD THE DECK SLAB REPAIR "AS BUILT" PLAN DETAILS TO THE BRIDGE OFFICE IN A TIMELY MANNER. BRIDGE OFFICE CONTACT PERSON IS JEFFREY BURKE. PHONE (217) 558-0282. EMAIL: JEFFREY.BURKE@ILLINOIS.GOV. THE ENGINEER SHALL NOTIFY THE DEPARTMENTS DESIGN AND PLANNING SECTION WHEN THE "AS BUILT" DECK SLAB REPAIR PLAN HAS BEEN SENT TO THE BRIDGE OFFICE. CONTACT PERSON IS JUNIOR SENAT. PHONE (815) 434-8449. EMAIL: JUNIOR.SENAT@ILLINOIS.GOV

STATE OF ILLINOIS
DEPARTMENT OF TRANSPORTATION
DISTRICT THREE
AS-BUILT INFORMATION

SUPERVISING CONSTRUCTION FIELD ENGINEER

RESIDENT ENGINEER / TECHNICIAN

START & END DATES
OF CONSTRUCTION: _____

INSPECTORS: _____

MODEL: General Notes (Sheet)
FILE NAME: E:\2422-1\CADD_Sheets\03666616-shl-Index.dgn



USER NAME = 14nho	DESIGNED - NH	REVISED -
	DRAWN - NH	REVISED -
PLOT SCALE = 0.16666667' / in.	CHECKED - RC	REVISED -
PLOT DATE = 1/9/2026	DATE - 1/2026	REVISED -

**STATE OF ILLINOIS
DEPARTMENT OF TRANSPORTATION**

**US RTE 24 OVER RAYMOND CREEK
GENERAL NOTES**

SCALE: N.T.S. SHEET 1 OF 1 SHEETS STA. TO STA.

F.A.P. RTE.	SECTION	COUNTY	TOTAL SHEETS	SHEET NO.
317	(19-BR-1)BRR	IROQUOIS	26	2
CONTRACT NO. 66R61				
ILLINOIS FED. AID PROJECT				

CODE NO.	ITEM	UNIT	TOTAL QUANTITY	CONSTRUCTION CODE	
				CONTRACT MAINTENANCE	
				100% STATE	
				BRIDGE	
				0047	
				SN 038-0037	
28100107	STONE RIPRAP, CLASS A4	SQ YD	280	280	
28200200	FILTER FABRIC	SQ YD	280	280	
48102100	AGGREGATE WEDGE SHOULDER, TYPE B	TON	6	6	
50102400	CONCRETE REMOVAL	CU YD	7.9	7.9	
50104650	SLOPE WALL REMOVAL	SQ YD	270.8	270.8	
50300255	CONCRETE SUPERSTRUCTURE	CU YD	7.7	7.7	
50300300	PROTECTIVE COAT	SQ YD	23	23	
50800205	REINFORCEMENT BARS, EPOXY COATED	POUND	930	930	
50800515	BAR SPLICERS	EACH	12	12	
52000110	PREFORMED JOINT STRIP SEAL	FOOT	88	88	
53212754	STRUCTURAL REPAIR OF CONCRETE (DEPTH EQUAL TO OR LESS THAN 5 INCHES)	SQ FT	2	2	
59000200	EPOXY CRACK INJECTION	FOOT	100	100	
63302720	REMOVE AND REERECT TRAFFIC BARRIER TERMINALS, TYPE 6B	EACH	1	1	
67100100	MOBILIZATION	L SUM	1	1	
70100405	TRAFFIC CONTROL AND PROTECTION, STANDARD 701321	EACH	1	1	

* SPECIALTY ITEM

MODEL: Summary of Quantities (Sheet)
FILE NAME: E:\2422-1\CADD_Sheets\366661-shi-SOQ.dgn



USER NAME = 14nho	DESIGNED - NH	REVISED -
	DRAWN - CB	REVISED -
PLOT SCALE = 0.16666667 / in.	CHECKED - RC	REVISED -
PLOT DATE = 1/14/2026	DATE - 1/2026	REVISED -

STATE OF ILLINOIS
DEPARTMENT OF TRANSPORTATION

US RTE 24 OVER RAYMOND CREEK
SUMMARY OF QUANTITIES

SCALE: N.T.S. SHEET 1 OF 3 SHEETS STA. TO STA.

F.A.P. RTE. 317	SECTION (19-BR-1)BRR	COUNTY IROQUOIS	TOTAL SHEETS 26	SHEET NO. 3
			CONTRACT NO. 66R61	
ILLINOIS FED. AID PROJECT				

CONSTRUCTION CODE
CONTRACT MAINTENANCE
100% STATE
BRIDGE
0047
SN 038-0037

CODE NO.	ITEM	UNIT	TOTAL QUANTITY	
70100450	TRAFFIC CONTROL AND PROTECTION, STANDARD 701201	L SUM	1	1
70106500	TEMPORARY BRIDGE TRAFFIC SIGNALS	EACH	1	1
70106700	TEMPORARY RUMBLE STRIPS	EACH	6	6
70300100	SHORT TERM PAVEMENT MARKING	FOOT	214	214
70300150	SHORT TERM PAVEMENT MARKING REMOVAL	SQ FT	72	72
70400100	TEMPORARY CONCRETE BARRIER	FOOT	375.0	375.0
70400200	RELOCATE TEMPORARY CONCRETE BARRIER	FOOT	350.0	350.0
70600251	IMPACT ATTENUATORS, TEMPORARY (NON-REDIRECTIVE, NARROW) TEST LEVEL 3	EACH	2	2
70600352	IMPACT ATTENUATORS, RELOCATE (NON-REDIRECTIVE, NARROW) TEST LEVEL 3	EACH	2	2
* 78009004	MODIFIED URETHANE PAVEMENT MARKING - LINE 4"	FOOT	1,437	1,437
* 78009006	MODIFIED URETHANE PAVEMENT MARKING - LINE 6"	FOOT	180	180
* 78100300	REPLACEMENT REFLECTOR	EACH	8	8
* 78200005	GUARDRAIL REFLECTORS, TYPE A	EACH	40	40
* 78200011	BARRIER WALL REFELCTORS, TYPE C	EACH	10	10

* SPECIALTY ITEM

MODEL: SOC-2 [Sheet]
FILE NAME: E:\2422-1\CADD_Sheets\366R61-sh1-SOC.dgn



USER NAME = jkehn	DESIGNED - NH	REVISED -
	DRAWN - NH	REVISED -
PLOT SCALE = 0.1666667 / in.	CHECKED - RC	REVISED -
PLOT DATE = 12/3/2025	DATE = 1/2026	REVISED -

**STATE OF ILLINOIS
DEPARTMENT OF TRANSPORTATION**

US RTE 24 OVER RAYMOND CREEK SUMMARY OF QUANTITIES	
SCALE: N.T.S.	SHEET 2 OF 3 SHEETS STA. TO STA.

F.A.P. RTE. 317	SECTION (19-BR-1)BRR	COUNTY IROQUOIS	TOTAL SHEETS 26	SHEET NO. 4
CONTRACT NO. 66R61			ILLINOIS FED. AID PROJECT	

TEMPORARY CONCRETE BARRIER

STAGE	FROM STATION	TO STATION	LT/RT	FOOT
1	2703+16.03	2706+90.41	LT/RT	375.00
ROUNDED TOTAL				375.0

RELOCATE TEMPORARY CONCRETE BARRIER

STAGE	FROM STATION	TO STATION	LT/RT	FOOT
2	2703+28.41	2706+77.88	LT/RT	350.00
ROUNDED TOTAL				350.0

**IMPACT ATTENUATORS, TEMPORARY
(NON-REDIRECTIVE, NARROW) TEST LEVEL 3**

STAGE	STATION	LT/RT	EACH
1	2703+16.03	RT	1
1	2706+90.41	RT	1
TOTAL			2

**IMPACT ATTENUATORS, RELOCATE
(NON-REDIRECTIVE, NARROW) TEST LEVEL 3**

STAGE	STATION	LT/RT	EACH
2	2703+28.41	LT	1
2	2706+77.88	LT	1
TOTAL			2

**RAISED REFLECTIVE PAVEMENT MARKER,
REFLECTOR REMOVAL**

FROM STATION	TO STATION	LT/RT	EACH
2701+52.81	2704+29.81	RT/LT	4
2705+76.47	2708+70.87	RT/LT	4
TOTAL			8

REPLACEMENT REFLECTOR

FROM STATION	TO STATION	LT/RT	EACH
2701+52.81	2704+29.81	RT/LT	4
2705+76.47	2708+70.87	RT/LT	4
TOTAL			8

BARRIER WALL REFLECTORS, TYPE C

STAGE	FROM STATION	TO STATION	LT/RT	EACH
1	2704+38.63	2705+56.55	LT	5
2	2704+49.73	2705+67.66	RT	5
TOTAL				10

GUARDRAIL REFLECTORS, TYPE A

STAGE	FROM STATION	TO STATION	LT/RT	EACH
1	2701+03.83	2704+53.63	LT	12
1	2705+50.25	2708+00.20	LT	8
2	2701+04.97	2704+54.81	RT	12
2	2705+61.79	2708+11.49	RT	8
TOTAL				40

MODIFIED URETHANE PAVEMENT MARKING - LINE 4"

FROM STATION	TO STATION	LT/RT	FOOT
2701+52.81	2708+70.87	LT	718.06
2701+52.81	2708+70.87	RT	718.06
ROUNDED TOTAL			1,437

MODIFIED URETHANE PAVEMENT MARKING - LINE 6"

FROM STATION	TO STATION	LT/RT	FOOT
2701+52.81	2708+70.87	RT/LT	179.51
ROUNDED TOTAL			180

PAVEMENT MARKING REMOVAL - WATER BLASTING

FROM STATION	TO STATION	LT/RT	WIDTH	AREA (SQ FT)
2701+52.81	2708+70.87	LT	4.00	239.35
2701+52.81	2708+70.87	RT	4.00	239.35
2701+52.81	2708+70.87	RT/LT	6.00	89.76
ROUNDED TOTAL				569

**REMOVE AND REERECT TRAFFIC
BARRIER TERMINALS, TYPE 6B**

FROM STATION	TO STATION	LT/RT	EACH
2704+01.13	2704+53.63	LT	1
TOTAL			1

AGGREGATE WEDGE SHOULDER, TYPE B

FROM STATION	TO STATION	LT/RT	TON
2704+01.13	2704+53.63	LT	5.98
ROUNDED TOTAL			6.0

LINEAR DELINEATOR PANELS, 4 INCH

FROM STATION	TO STATION	LT/RT	EACH
2701+03.83	2704+53.63	LT	3
2701+04.97	2704+54.81	RT	3
2705+50.25	2708+00.20	LT	2
2705+61.79	2708+11.49	RT	2
TOTAL			10

LINEAR DELINEATOR PANELS, 6 INCH

FROM STATION	TO STATION	LT/RT	EACH
2704+38.63	2705+56.55	LT	2
2704+49.73	2705+67.66	RT	2
TOTAL			4

MODEL: Schedules (Sheet)
FILE NAME: E:\2422-1\CADD_Sheets\0366661\esth-schedules.dgn



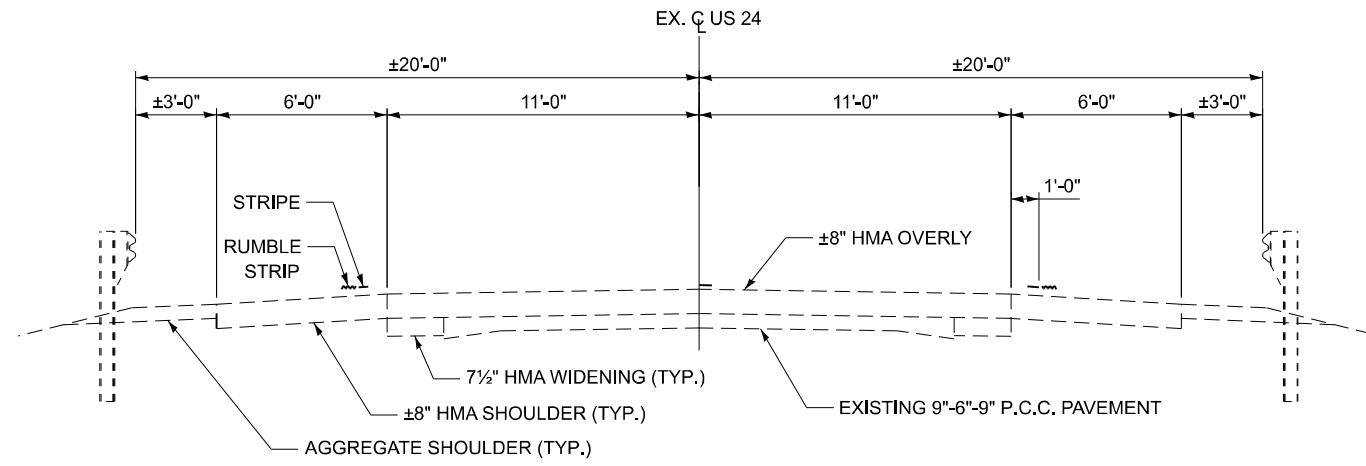
USER NAME = 14nho	DESIGNED - NH	REVISED -
	DRAWN - CB	REVISED -
PLOT SCALE = 0.16666667"/in.	CHECKED - RC	REVISED -
PLOT DATE = 11/26/2025	DATE - 1/2026	REVISED -

**STATE OF ILLINOIS
DEPARTMENT OF TRANSPORTATION**

**US RTE 24 OVER RAYMOND CREEK
SCHEDULE OF QUANTITIES**

SCALE: N.T.S. SHEET 1 OF 1 SHEETS STA. TO STA.

F.A.P. RTE.	SECTION	COUNTY	TOTAL SHEETS	SHEET NO.
317	(19-BR-1)BRR	IROQUOIS	26	6
CONTRACT NO. 66R61				
ILLINOIS FED. AID PROJECT				



**EXISTING TYPICAL SECTION
US ROUTE 24
STA. 2701+00 TO STA. 2704+30
STA. 2705+76 TO STA. 2708+20**

MODEL: ###
FILE NAME: E:\2422-1\CADD_Sheets\366R61-1-sh-typical SECTION from IDOT.dgn

USER NAME = 14nho	DESIGNED - RW	REVISED -
	DRAWN - RW	REVISED -
	CHECKED - YP	REVISED -
PLOT DATE = 11/6/2025	DATE - 10/20/2025	REVISED -

**STATE OF ILLINOIS
DEPARTMENT OF TRANSPORTATION**

**US RTE 24 OVER RAYMOND CREEK
TYPICAL SECTIONS**

SCALE: N.T.S. SHEET 1 OF 1 SHEETS STA. TO STA.

F.A.P. RTE.	SECTION	COUNTY	TOTAL SHEETS	SHEET NO.
317	(19-BR-1)BRR	IROQUOIS	26	7
CONTRACT NO. 66R61				
ILLINOIS FED. AID PROJECT				

MAINTENANCE OF TRAFFIC GENERAL NOTES

1. MAINTENANCE OF TRAFFIC PLANS SHALL SERVE AS A GUIDE FOR THE SAFE DIVERSION OF TRAFFIC DURING THE EXECUTION OF THIS CONTRACT. THE CONTRACTOR MAY MODIFY THE MAINTENANCE OF TRAFFIC PLANS TO MEET CONSTRUCTION NEEDS BUT NOT AT THE EXPENSE OF PUBLIC SAFETY OR CONVENIENCE. ANY CHANGES TO THE TRAFFIC CONTROL PLANS SHALL BE SUBMITTED TO THE ENGINEER FOR APPROVAL.
2. TEMPORARY PAVEMENT MARKING TAPE, TYPE IV SHALL BE USED FOR ANY SHORT TERM PAVEMENT MARKINGS ON FINAL SURFACES.
3. ALL TRAFFIC CONTROL DEVICES SHALL BE REFLECTORIZED PRIOR TO INSTALLATION AND CLEANED AS SPECIFIED IN THE TRAFFIC CONTROL SPECIAL PROVISIONS OR AS DIRECTED BY THE ENGINEER.
4. SEE STRUCTURAL PLANS FOR BRIDGE REPAIR INFORMATION.
5. ALL EXISTING AND TEMPORARY PAVEMENT MARKINGS FROM PRIOR STAGES THAT ARE IN CONFLICT SHALL BE REMOVED.
6. EXISTING RAISED REFLECTIVE PAVEMENT MARKER REFLECTORS THAT CONFLICT WITH THE REVISED TRAFFIC PATTERNS, SHALL BE REMOVED FROM THE EXISTING CASINGS LOCATED IN THE PAVEMENT. THIS WORK WILL BE PAID FOR AT THE CONTRACT UNIT PRICE PER EACH FOR RAISED REFLECTIVE PAVEMENT MARKER, REFLECTOR REMOVAL.

SUGGESTED SEQUENCE OF OPERATIONS

STAGE 1

1. INSTALL TEMPORARY TRAFFIC CONTROL DEVICES, TEMPORARY SIGNAGE, TEMPORARY CONCRETE BARRIER, TEMPORARY IMPACT ATTENUATORS & TEMPORARY PAVEMENT MARKINGS TO CLOSE THE EB LANE OF US RTE 24 AS SHOWN IN THE STAGE 1 STAGING PLANS OR AS DIRECTED BY THE ENGINEER AND ACTIVATE TEMPORARY BRIDGE SIGNALS.
2. PERFORM THE STAGE 1 PORTION OF THE STRUCTURE REPAIRS AS SHOWN ON THE STRUCTURE PLANS.

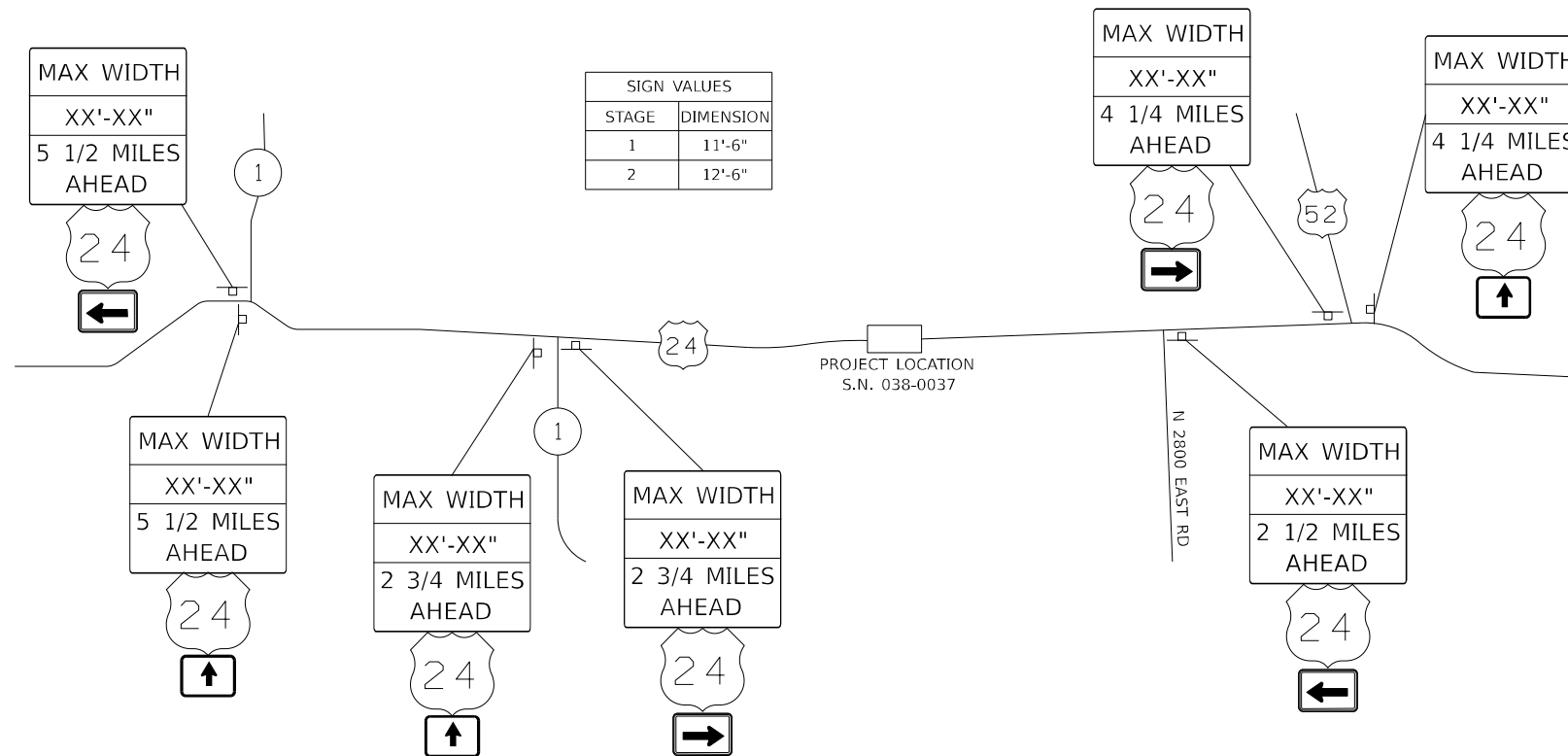
STAGE 2

1. RELOCATE TEMPORARY CONCRETE BARRIER, IMPACT ATTENUATORS AND REVISE TEMPORARY PAVEMENT MARKINGS TO CLOSE THE WB LANE OF US RTE 24 AS SHOWN IN THE STAGE 2 STAGING PLANS OR AS DIRECTED BY THE ENGINEER AND ACTIVATE TEMPORARY BRIDGE SIGNALS.
2. PERFORM THE STAGE 2 PORTION OF THE STRUCTURE REPAIRS AS SHOWN ON THE STRUCTURE PLANS.

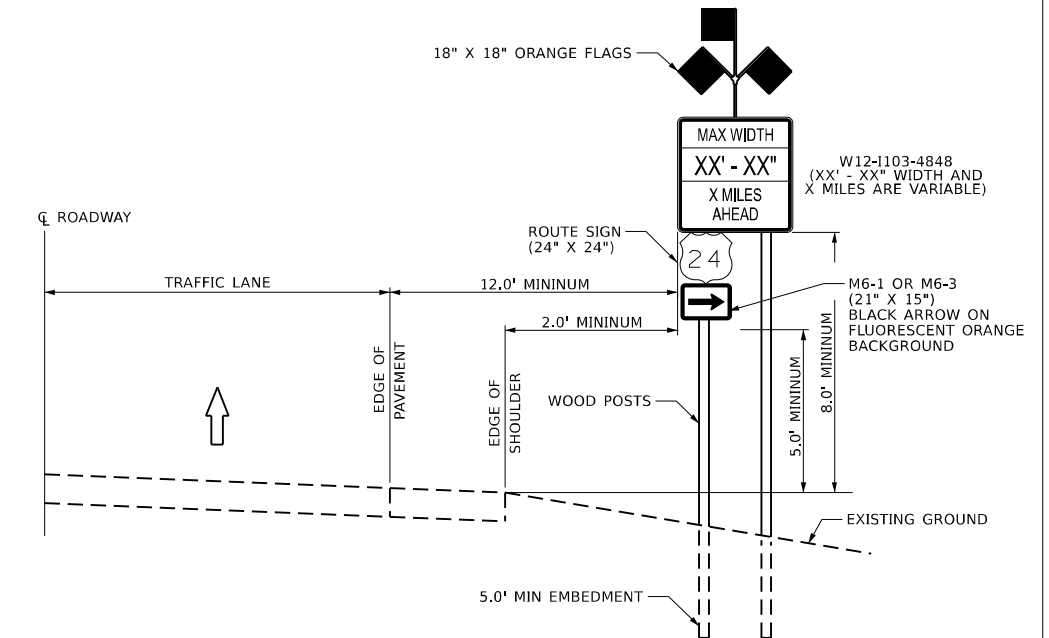
POST-STAGE

1. UTILIZE HIGHWAY STANDARDS 701301 AND 701311 TO PLACE FINAL PAVEMENT MARKINGS.

WIDTH RESTRICTION SIGNING DETAIL



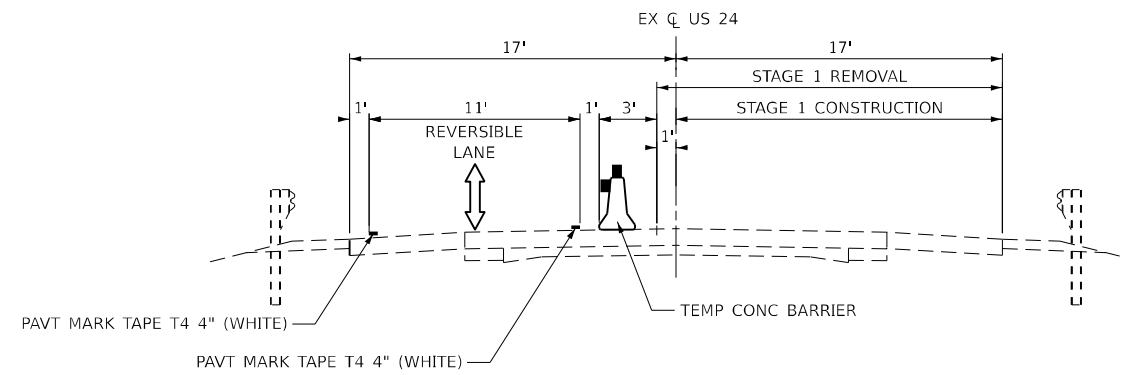
WIDTH RESTRICTION SIGN CONVENTIONAL ROADWAYS



MODEL - General Notes (Sheet)
FILE NAME: E:\2422-1\CADD_Sheets\0366661-eh-Staging_notes.dgn

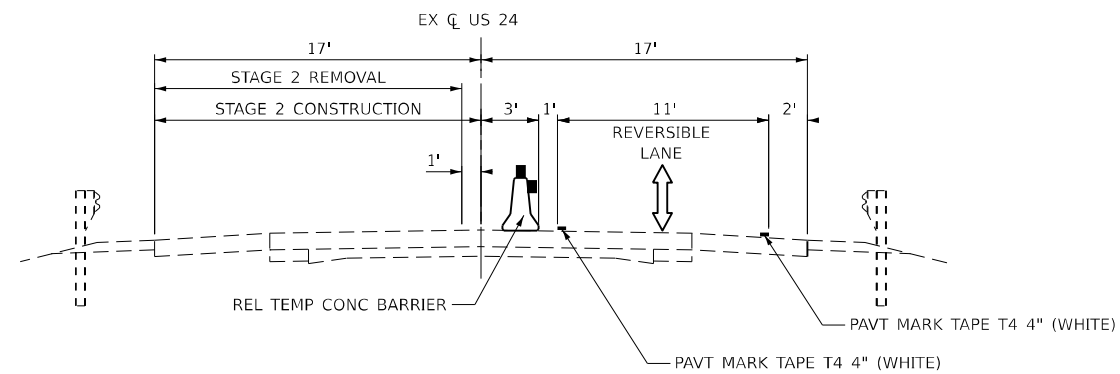
USER NAME = 14nho	DESIGNED - NH	REVISED -
PLOT SCALE = 0.16666667' / in.	DRAWN - NH	REVISED -
PLOT DATE = 1/5/2026	CHECKED - RC	REVISED -
	DATE - 1/2026	REVISED -

F.A.P. RTE. 317	SECTION (19-BR-1)BRR	COUNTY IROQUOIS	TOTAL SHEETS 26	SHEET NO. 8
CONTRACT NO. 66R61				
ILLINOIS FED. AID PROJECT				



STAGE 1 TYPICAL SECTION

US RTE 24 OVER RAYMOND CREEK
LOOKING EAST



STAGE 2 TYPICAL SECTION

US RTE 24 OVER RAYMOND CREEK
LOOKING EAST

MODEL: Staging Typical (Sheet)
FILE NAME: E:\2022-1\CAD\Drawings\Sheet\03666616-1-stagingtyp.dgn



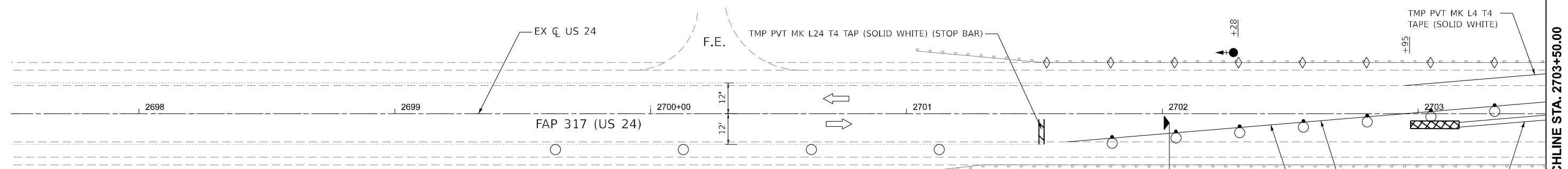
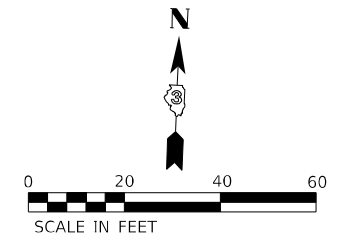
USER NAME = 14nho	DESIGNED - NH	REVISED -
	DRAWN - CB	REVISED -
PLOT SCALE = 0.1666667' / in.	CHECKED - RC	REVISED -
PLOT DATE = 1/5/2026	DATE - 1/2026	REVISED -

**STATE OF ILLINOIS
DEPARTMENT OF TRANSPORTATION**

**US RTE 24 OVER RAYMOND CREEK
STAGING TYPICAL SECTIONS**

SCALE: N.T.S. SHEET 2 OF 4 SHEETS STA. TO STA.

F.A.P. RTE.	SECTION	COUNTY	TOTAL SHEETS	SHEET NO.
317	(19-BR-1)BRR	IROQUOIS	26	9
CONTRACT NO. 66R61				
ILLINOIS FED. AID PROJECT				



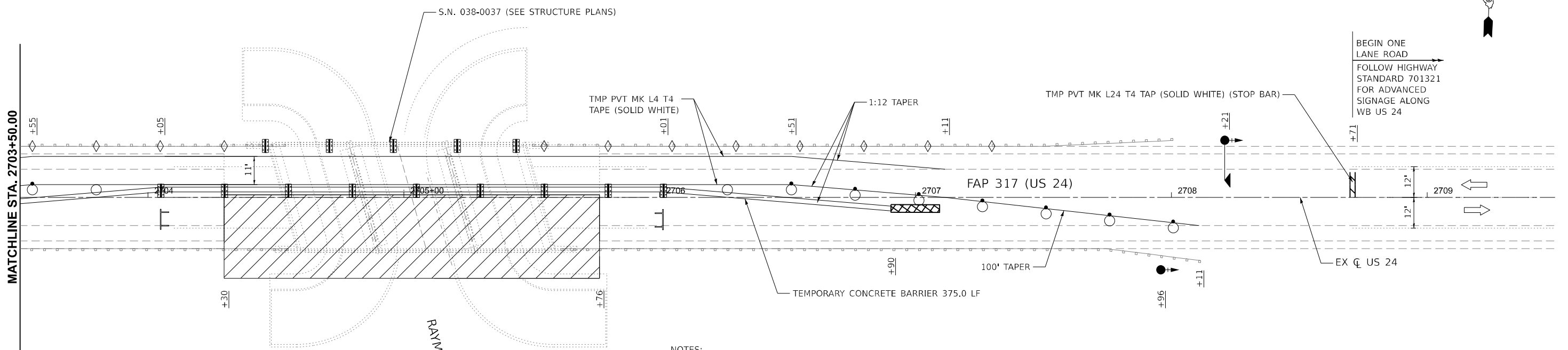
LEGEND

- WORK ZONE
- DIRECTION OF TRAFFIC
- DRUM WITH STEADY BURNING BI-DIRECTIONAL LIGHT
- TYPE III BARRICADE W/ FLASHING LIGHTS
- DRUM
- IMPACT ATTENUATOR, TEMPORARY (NON-REDIRECTIVE) TEST LEVEL 3
- TEMPORARY CONCRETE BARRIER
- BARRIER WALL REFLECTOR, TYPE C (25' C-C)
- CRYSTAL, BIDIRECTIONAL GUARDRAIL REFLECTORS (25' C-C)
- TRAFFIC SIGNAL WITH BACK PLATE AND MICROWAVE DETECTOR
- TRAFFIC SIGNAL WITH BACK PLATE

BEGIN ONE LANE ROAD
FOLLOW HIGHWAY STANDARD 701321 FOR ADVANCED SIGNAGE ALONG EB US 24

1:12 TAPER
TMP PVT MK L4 T4 TAPE (SOLID WHITE)
TEMPORARY CONCRETE BARRIER 375.0 LF

MATCHLINE STA. 2703+50.00



NOTES:

1. SEE HIGHWAY STANDARD 701321 "LANE CLOSURE, 2L, 2W, BRIDGE REPAIR W/ BARRIER" FOR ADDITIONAL INFORMATION REGARDING INSTALLATION OF TEMPORARY BRIDGE SIGNALS AND TRAFFIC CONTROL DEVICES.
2. FOLLOW HIGHWAY STANDARD 701321 FOR ADVANCED SIGNING ALONG EB & WB US RTE 24.

MODEL: E:\CU_1-Plan 1 (Sheet) FILE NAME: E:\2422-1CADDD_Sheet10 D:\66666161-sth-Stage1-038-0037-Stage 1.dgn

Lin Engineering, Ltd.
Consulting Engineers
Westmont, Illinois

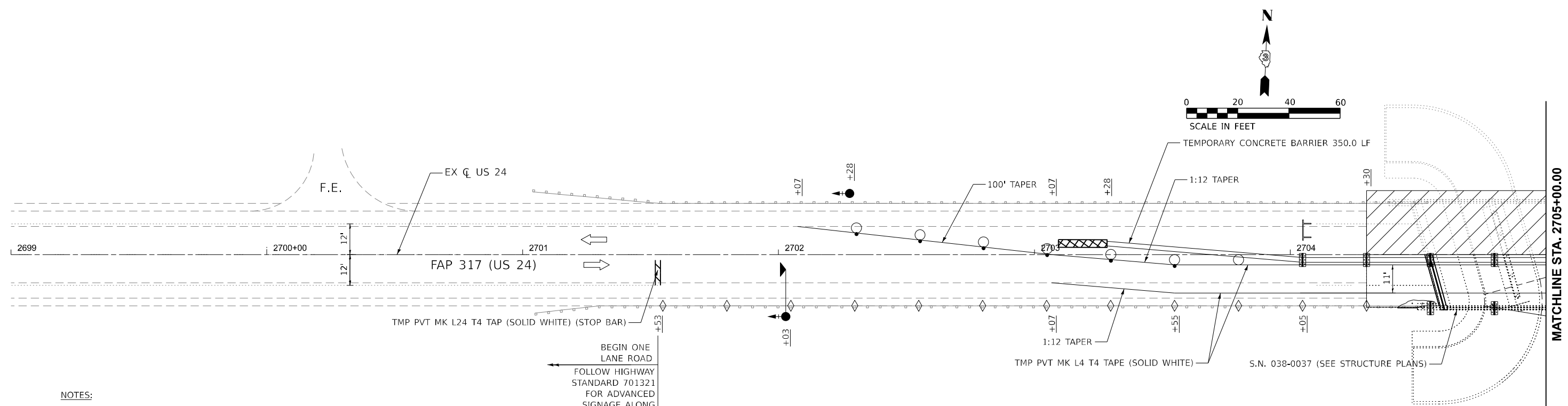
USER NAME = 14nho	DESIGNED - NH	REVISED -
DRAWN - NH	REVISIONS -	
PLOT SCALE = 0.1666667' / in.	CHECKED - RC	REVISED -
PLOT DATE = 1/6/2026	DATE - 1/2026	REVISED -

**STATE OF ILLINOIS
DEPARTMENT OF TRANSPORTATION**

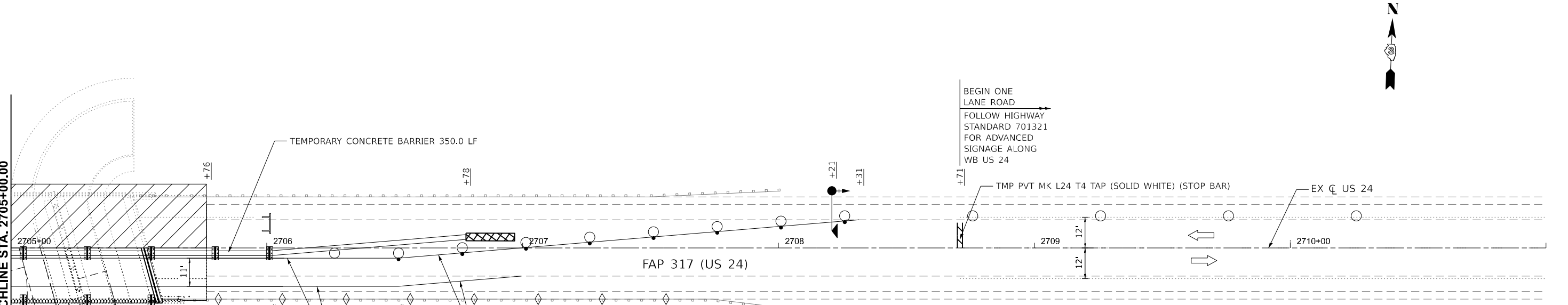
**US RTE 24 OVER RAYMOND CREEK
STAGING PLAN - STAGE I**

SCALE: 1"=20' SHEET 3 OF 4 SHEETS STA. 2701+52.81 TO STA. 2708+70.87

F.A.P. RTE. 317	SECTION (19-BR-1)BRR	COUNTY IROQUOIS	TOTAL SHEETS 26	SHEET NO. 10
CONTRACT NO. 66R61				
ILLINOIS FED. AID PROJECT				



- NOTES:**
- SEE HIGHWAY STANDARD 701321 "LANE CLOSURE, 2L, 2W, BRIDGE REPAIR W/ BARRIER" FOR ADDITIONAL INFORMATION REGARDING INSTALLATION OF TEMPORARY BRIDGE SIGNALS AND TRAFFIC CONTROL DEVICES.
 - FOLLOW HIGHWAY STANDARD 701321 FOR ADVANCED SIGNING ALONG EB & WB US RTE 24.



LEGEND

- WORK ZONE
- DIRECTION OF TRAFFIC
- DRUM WITH STEADY BURNING BI-DIRECTIONAL LIGHT
- TYPE III BARRICADE W/ FLASHING LIGHTS
- DRUM
- IMPACT ATTENUATOR, TEMPORARY (NON-REDIRECTIVE) TEST LEVEL 3
- TEMPORARY CONCRETE BARRIER
- BARRIER WALL REFLECTOR, TYPE C (25' C-C)
- CRYSTAL, BIDIRECTIONAL GUARDRAIL REFLECTORS (25' C-C)
- TRAFFIC SIGNAL WITH BACK PLATE AND MICROWAVE DETECTOR
- TRAFFIC SIGNAL WITH BACK PLATE

MODEL: E:\CU_1-Plan 1 (Sheet)
 FILE NAME: E:\2422-1\CADD_Sheets\038-0037-Stage 2.dgn

LI ENGINEERING, LTD.
 Consulting Engineers
 Westmont, Illinois

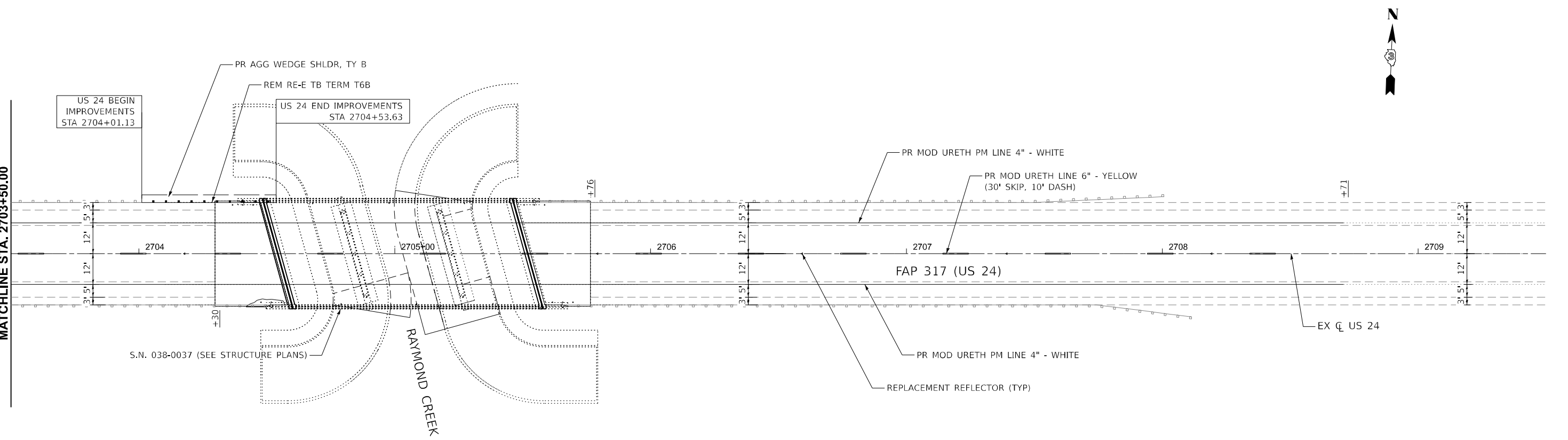
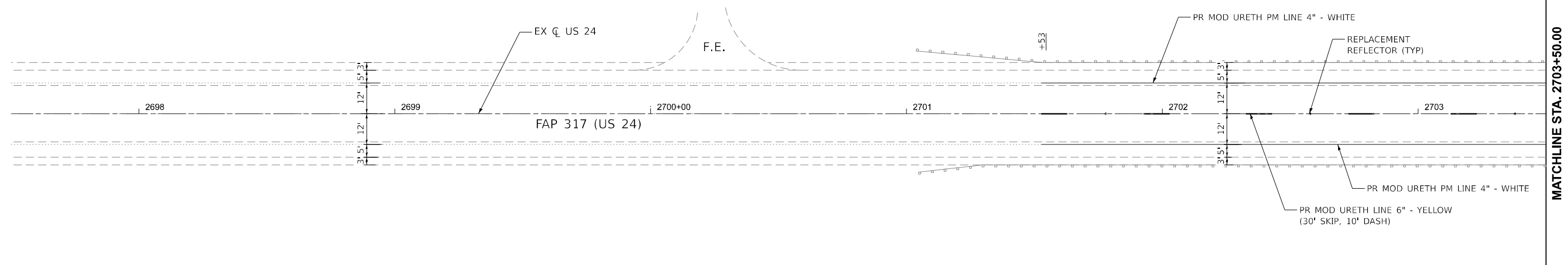
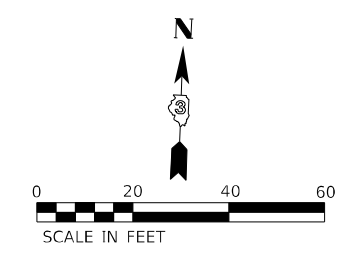
USER NAME = 14nho	DESIGNED - NH	REVISED -
PLOT SCALE = 0.1666667' / in.	DRAWN - NH	REVISED -
PLOT DATE = 1/6/2026	CHECKED - RC	REVISED -
	DATE - 1/2026	REVISED -

STATE OF ILLINOIS
DEPARTMENT OF TRANSPORTATION

US RTE 24 OVER RAYMOND CREEK
STAGING PLAN - STAGE II

SCALE: 1"=20' SHEET 4 OF 4 SHEETS STA. 2701+52.81 TO STA. 2708+70.87

F.A.P. RTE.	SECTION	COUNTY	TOTAL SHEETS	SHEET NO.
317	(19-BR-1)BRR	IROQUOIS	26	11
CONTRACT NO. 66R61				
ILLINOIS FED. AID PROJECT				



MODEL: E:\C\1-Plan 1 [Sheet]
 FILE NAME: E:\2422-1CAD\Sheet\0366661-1-Plan.dgn



USER NAME = 14nho	DESIGNED - NH	REVISED -
	DRAWN - NH	REVISED -
PLOT SCALE = 0.1666667' / in.	CHECKED - RC	REVISED -
PLOT DATE = 1/6/2026	DATE - 1/2026	REVISED -

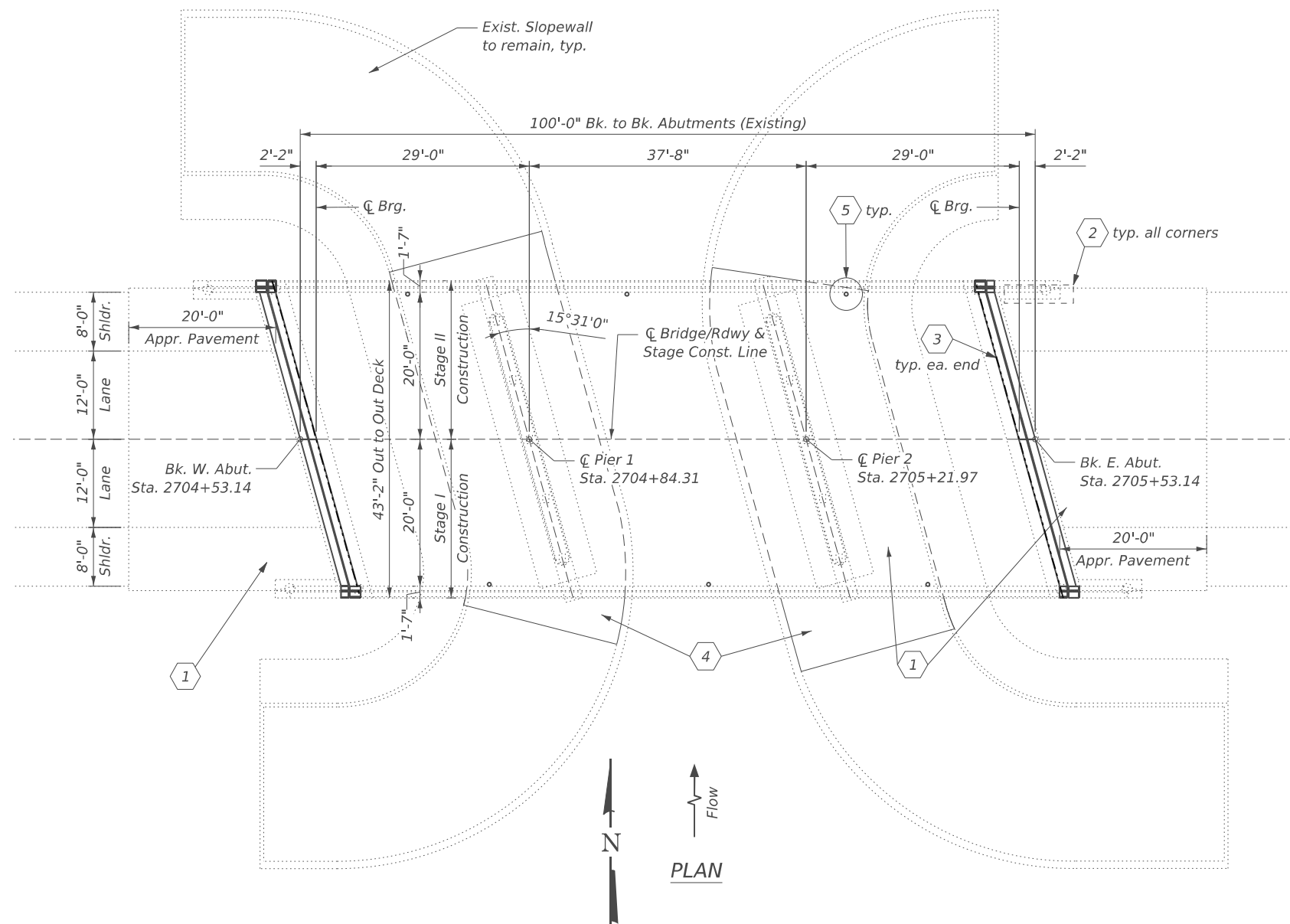
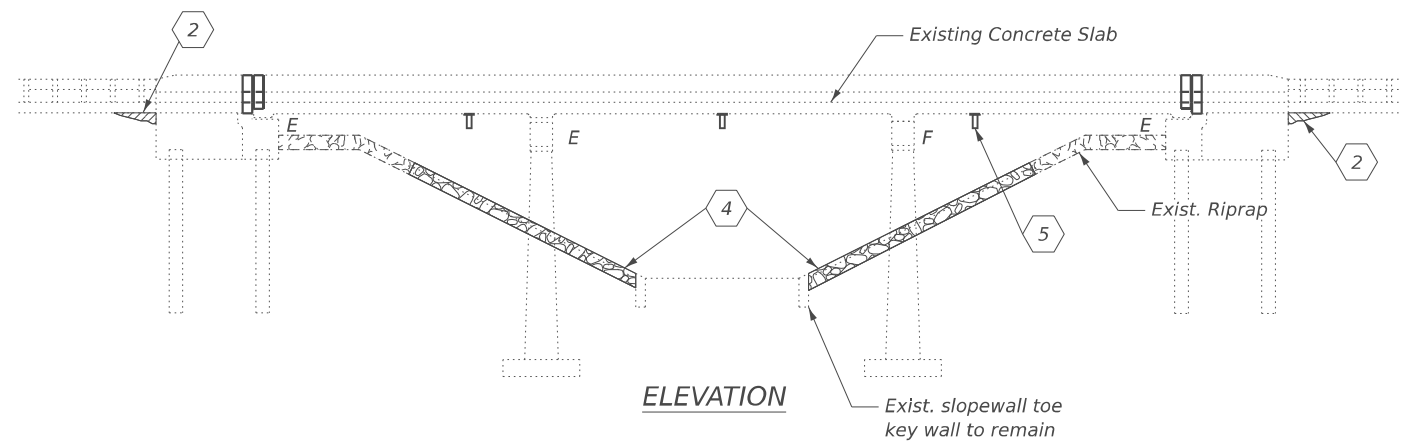
STATE OF ILLINOIS
DEPARTMENT OF TRANSPORTATION

US RTE 24 OVER RAYMOND CREEK
ROADWAY PLAN

SCALE: 1"=20' SHEET 1 OF 1 SHEETS STA. 2701+52.81 TO STA. 2708+70.87

F.A.P. RTE.	SECTION	COUNTY	TOTAL SHEETS	SHEET NO.
317	(19-BR-1)BRR	IROQUOIS	26	12
CONTRACT NO. 66R61				
ILLINOIS FED. AID PROJECT				

Existing Structure: S.N. 038-0037 was originally built in 1957 as S.B.I. Rte. 8 Section 19B-1. The structure was 36'-4" out to out of deck and consisted of three-span continuous reinforced concrete girders on solid wall piers and open abutments. In 1992, the superstructure was replaced and widened to a three-span continuous, 14 1/2" thick reinforced concrete slab with 43'-2" width out to out of deck. The existing structure consists of the original 1957 built substructure and the 1992 built superstructure. Proposed repairs to be performed using stage construction.



SCOPE OF WORK: (see in Plan and Elevation)

1. Perform partial depth approach slab repairs and epoxy crack injection on deck.
2. Plug voids under approach slab along each of the wingwalls with CLSM or Grout.
3. Remove existing expansion joints and install new strip seal joints at both abutments.
4. Remove the slope walls except the toe key walls and replace with riprap.
5. Extend the existing aluminum deck drains and clean the deck drains.

DESIGN STRESSES

FIELD UNITS

New Construction

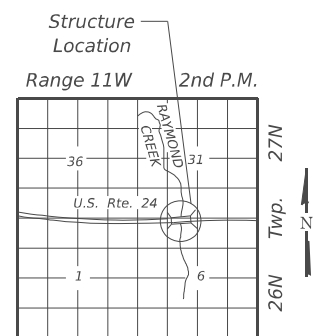
$f'_c = 4,000$ psi

$f_y = 60,000$ psi (Reinf.)

Existing Structure

$f'_c = 3,500$ psi

$f_y = 60,000$ psi (Reinf.)



LOCATION SKETCH



Hemal Patel

Date: 01/29/2026

Expires: 11/30/2026

GENERAL PLAN & ELEVATION
U.S. RTE. 24 OVER RAYMOND CREEK
F.A.P. 317 - SEC. (19-BR-1) BRR
IROQUOIS COUNTY
STATION 2705+03.14
STRUCTURE NO. 038-0037

MODEL: Br Sheet Consultant
 FILE NAME: C:\Users\DanielPruchnick\10-4 Engineering - Documents\Projects\02-103-00 IDOT PTB 213-037 D3 Phase II V-V1600 CADD DESIGN\606 Structural\WO-1_C66R61\Sheet\Page 1_GP&E_WO1_038-0037.dgn



USER NAME = DanielPruchnick	DESIGNED - HP	REVISED - ####
	DRAWN - DP	REVISED - ####
PLOT SCALE = \$SCALE\$	CHECKED - VP	REVISED - ####
PLOT DATE = 1/28/2026	DATE - 01/29/2026	REVISED - ####

STATE OF ILLINOIS
DEPARTMENT OF TRANSPORTATION

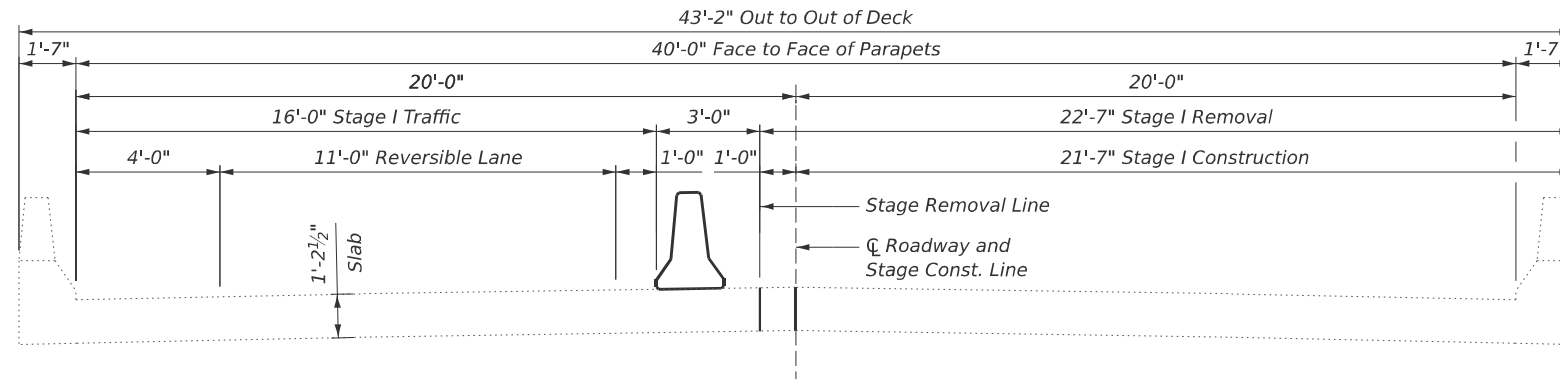
GENERAL PLAN & ELEVATION
STRUCTURE NO.038-0037

SHEET S-1 OF S-12 SHEETS

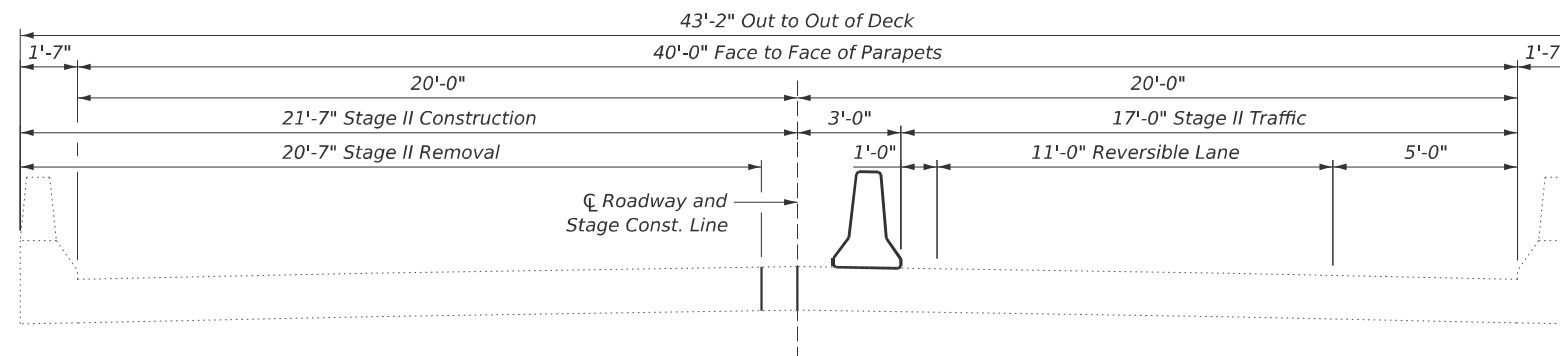
F.A.P. RTE.	SECTION	COUNTY	TOTAL SHEETS	SHEET NO.
317	(19-BR-1)BRR	IROQUOIS	26	13
CONTRACT NO. 66R61				

ILLINOIS FED. AID PROJECT

MODEL: Br_Sheet_Constant
 FILE NAME: C:\Users\DanielPruchnick\10-4_Engineering - Documents\Projects\02-103-00_IDOT PTB 213-037 D3 Phase II V-1600 CADD DESIGN\606 Structural\WC-1_C66R61\Sheet\Page 2_General Notes_Index of Sheets_and Total B.O.M..dgn



CROSS SECTION - STAGE I
 (Looking East)



CROSS SECTION - STAGE II
 (Looking East)

GENERAL NOTES

Plan dimensions and details relative to the existing structure have been taken from existing plans and are subject to nominal construction variations. It shall be the Contractor's responsibility to verify such dimensions and details in the field and make the necessary approved adjustments prior to construction or ordering of materials. Such variations shall not be cause for additional compensation for a change in the scope of work. However, the Contractor will be paid for the quantity actually furnished at the unit price for the work.

Reinforcement bars designated (E) shall be epoxy coated.

Protective Coat shall be applied to the finished surfaces of all new concrete areas and the deck and approach slab repairs.

The deck surface shall have its final finish tined according to Article 420.09(e)(1) of the Standard Specifications. Cost included with Concrete Superstructure.

Areas of deck and approach slab repairs are estimated. The actual repair areas shall be delineated by the Engineer in the field and show actual repair locations and limits in the as-built plans.

Joint openings shall be adjusted according to Article 520.04 of the Std. Specs. when the deck is poured at an ambient temperature other than 50° F.

Cost of removal and disposal of existing expansion joints shall be included with the cost of concrete removal.

Expansion joints shall be fabricated to conform to the existing bridge cross slope.

INDEX OF SHEETS

- S-1. General Plan & Elevation
- S-2. General Notes, Index of Sheets, & Total B.O.M.
- S-3. Deck & Approach Slab Repair Details
- S-4. As-Built Deck & Approach Slab Repair Details
- S-5. Approach Slab Repair Details
- S-6. Removal Details
- S-7. Reconstruction Details
- S-8. Expansion Joint Sections, Details, & Bar List
- S-9. Preformed Joint Strip Seal
- S-10. Slopewall Repairs
- S-11. Miscellaneous Repairs
- S-12. Bar Splicer Assembly And Mechanical Splicer Details

TOTAL BILL OF MATERIAL

ITEM	UNIT	SUPER	SUB	TOTAL
Stone Riprap, Class A4	Sq.Yd.	-	280	280
Filter Fabric	Sq.Yd.	-	280	280
Concrete Removal	Cu. Yd.	7.9	-	7.9
Slope Wall Removal	Sq. Yd.	-	270.8	270.8
Concrete Superstructure	Cu. Yd.	7.7	-	7.7
Protective Coat	Sq. Yd.	23	-	23
Reinforcement Bars, Epoxy Coated	Pound	930	-	930
Bar Splicers	Each	12	-	12
Preformed Joint Strip Seal	Foot	88	-	88
Structural Repair of Concrete (Depth Equal To or Less Than 5 Inches)	Sq. Ft.	2	-	2
Epoxy Crack Injection	Foot	100	-	100
Deck Drain Extensions	Each	6	-	6
Controlled Low-Strength Material (Special)	Cu. Yd.	-	4.6	4.6
Approach Slab Repair (Partial Depth)	Sq. Yd.	21	-	21

USER NAME = DanielPruchnick	DESIGNED - HP	REVISED - ####
	DRAWN - DP	REVISED - ####
PLOT SCALE = \$SCALE\$	CHECKED - VP	REVISED - ####
PLOT DATE = 2/18/2026	DATE - 01/29/2026	REVISED - ####

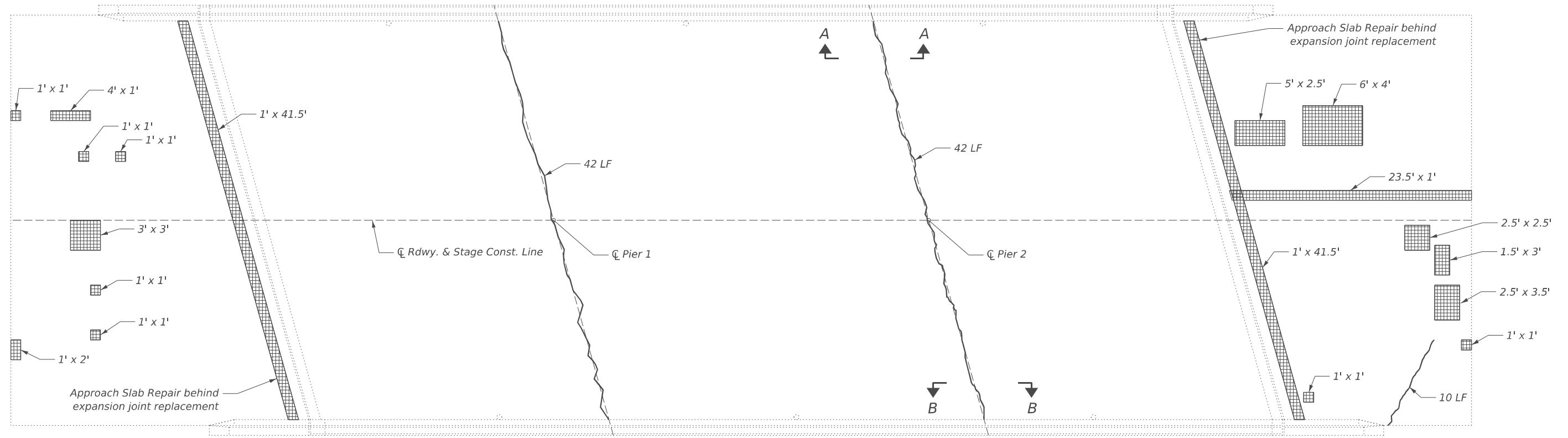
STATE OF ILLINOIS
DEPARTMENT OF TRANSPORTATION

GENERAL NOTES, INDEX OF SHEETS, & TOTAL BOM
STRUCTURE NO.038-0037

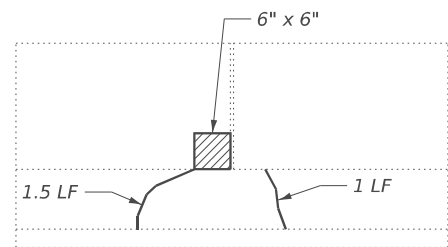
SHEET S-2 OF S-12 SHEETS

F.A.P. RTE.	SECTION	COUNTY	TOTAL SHEETS	SHEET NO.
317	(19-BR-1)BRR	IROQUOIS	26	14
CONTRACT NO. 66R61				
ILLINOIS FED. AID PROJECT				

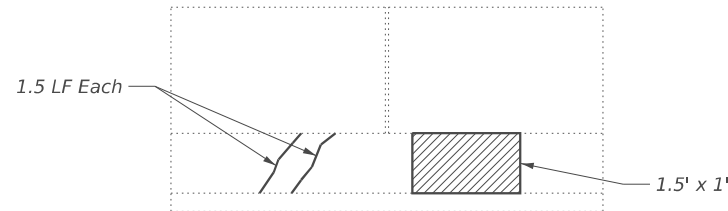
MODEL: Br Sheet Consultant
 FILE NAME: C:\Users\DanielPruchnick\10-4 Engineering - Documents\Projects\02-103-00 IDOT PTB 213-037 D3 Phase II V-1600 CADD DESIGN\606 Structural\WC-1_C66R61\Sheet\Page 3_Deck & Approach Slab Plans.dgn



PLAN



PARAPET ELEVATION A-A



PARAPET ELEVATION B-B

LEGEND

- Approach Slab Repair (Partial Depth)
- Structural Repair of Concrete (Depth Equal to or Less Than 5 Inches)
- Epoxy Crack Injection

BILL OF MATERIAL

Item	Unit	Total
Approach Slab Repair (Partial Depth)	Sq. Yd.	21
Structural Repair of Concrete (Depth Equal to or Less Than 5 Inches)	Sq. Ft.	2
Epoxy Crack Injection	Foot	100



USER NAME = DanielPruchnick	DESIGNED - HP	REVISED - ####
PLOT SCALE = \$SCALE\$	DRAWN - DP	REVISED - ####
PLOT DATE = 1/19/2026	CHECKED - VP	REVISED - ####
	DATE - 01/29/2026	REVISED - ####

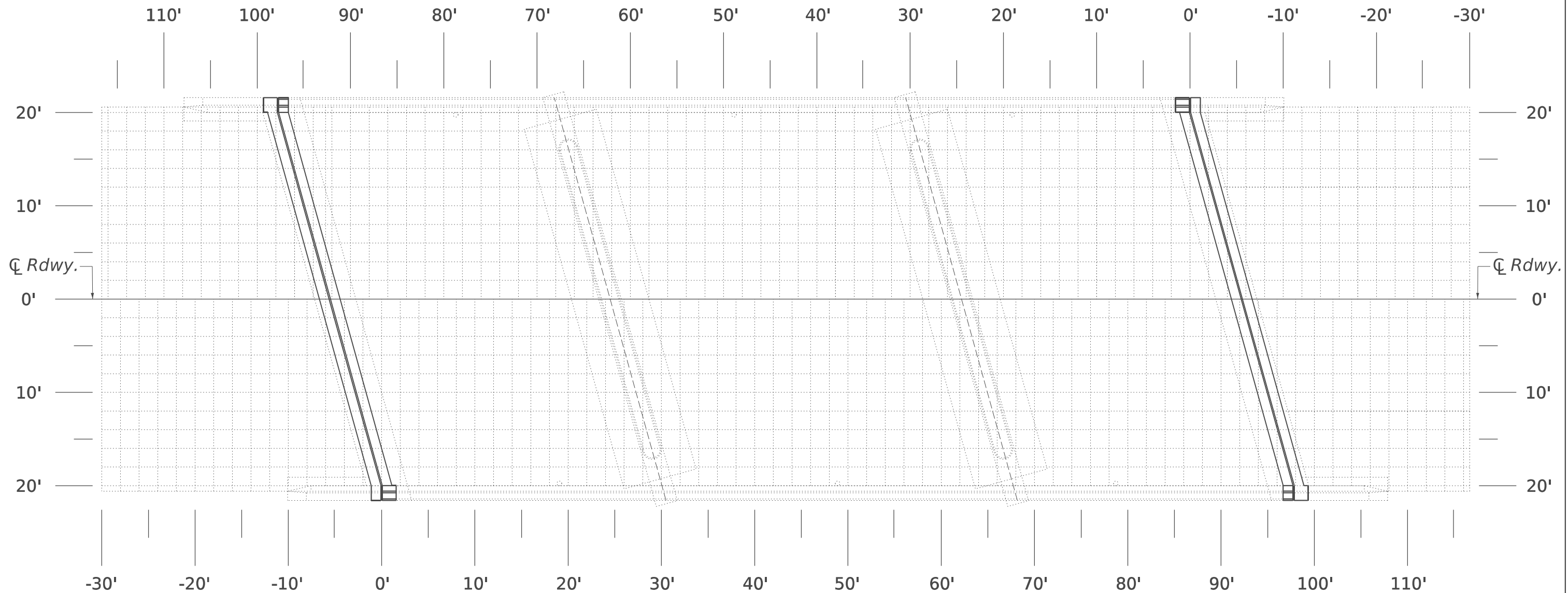
STATE OF ILLINOIS
 DEPARTMENT OF TRANSPORTATION

DECK & APPROACH SLAB REPAIR DETAILS
 STRUCTURE NO.038-0037

SHEET S-3 OF S-12 SHEETS

F.A.P. RTE.	SECTION	COUNTY	TOTAL SHEETS	SHEET NO.
317	(19-BR-1)BRR	IROQUOIS	26	15
CONTRACT NO. 66R61				
ILLINOIS FED. AID PROJECT				

MODEL: Br Sheet Consultant
 FILE NAME: C:\Users\DanielPruchnick\10-4 Engineering - Documents\Projects\02-103-00 IDOT PTB 213-037 D3 Phase II V-1600 CADD DESIGN\606 Structural\WC-1_C66R61\Sheet\Page 4_Deck & Approach Slab Crdlines.dgn



"AS-BUILT" PLAN
 DECK & APPROACH SLAB REPAIRS



Note:
 When all deck slab repairs have been completed, the Engineer shall record the actual deck slab repair locations and repair areas on this "As-Built" plan sheet. When all deck repairs have been shown on this detail, the "As-Built" deck slab repairs shall be submitted to the Bridge Office for their record.



USER NAME = DanielPruchnick	DESIGNED - HP	REVISED - ####
	DRAWN - DP	REVISED - ####
PLOT SCALE = \$SCALE\$	CHECKED - VP	REVISED - ####
PLOT DATE = 1/19/2026	DATE - 01/29/2026	REVISED - ####

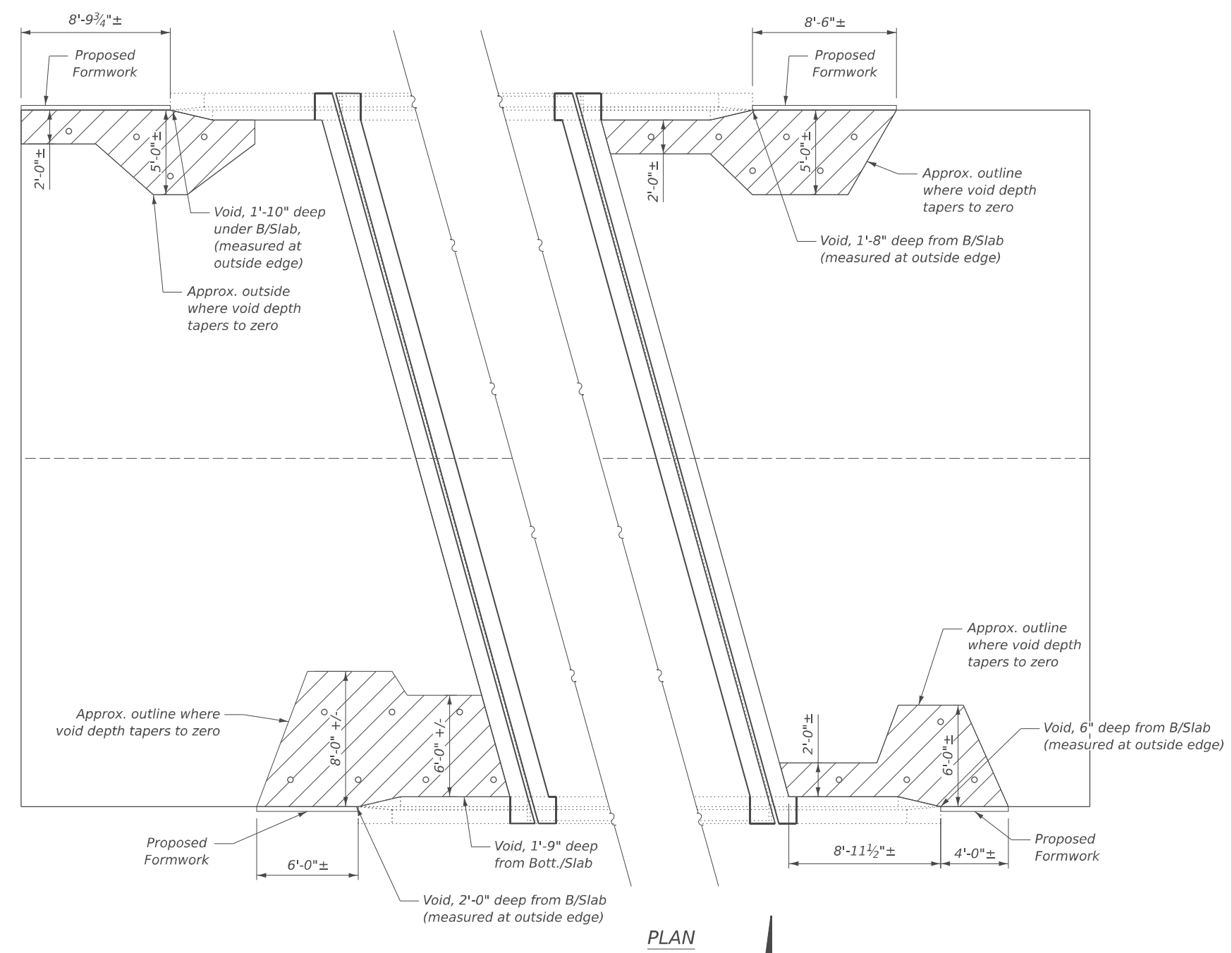
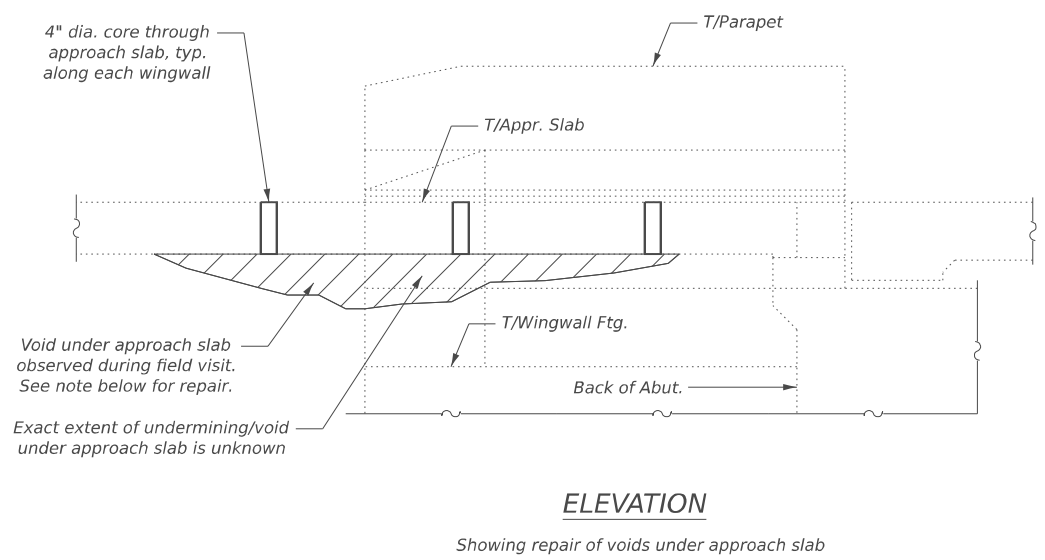
STATE OF ILLINOIS
 DEPARTMENT OF TRANSPORTATION

"AS-BUILT" DECK & APPROACH SLAB REPAIR DETAILS
 STRUCTURE NO.038-0037

SHEET S-4 OF S-12 SHEETS

F.A.P. RTE. 317	SECTION (19-BR-1)BRR	COUNTY IROQUOIS	TOTAL SHEETS 26	SHEET NO. 16
CONTRACT NO. 66R61				
ILLINOIS FED. AID PROJECT				

MODEL: Br Sheet Consultant
 FILE NAME: C:\Users\DanielPruchnick\10-4 Engineering - Documents\Projects\02-103-00 IDOT PTB 213-037 D3 Phase II V-1600 CADD DESIGN\606 Structural\WC-1_C66R61\SheetPage 5 Approach Pavement.dgn



- Notes:
1. Voids under approach slab shall be filled with Controlled Low-Strength Material (Special). The contractor has an option to use flowable grout in lieu of CLSM. The grout shall be according to the special provision for Cement, Finely Divided Minerals, Admixtures, Concrete, and Mortar.
 2. Place formwork along sides of approach slab as needed to confine CLSM within the limits of approach slab. Provide vent holes at the top of formwork.
 3. Core 4" dia. holes at 4'-0" ± spacing through approach slab in approximate locations shown in plan.
 4. Pump CLSM through the holes, beginning with the hole nearest to the back of abutment.
 5. Fill holes individually, working in the direction towards the end of the wingwall.
 6. Voids shall be considered filled when the CLSM flows through the vent holes and backs up through each cored hole.
 7. Clean the cored holes in approach slab of CLSM and seal holes with approved grout.

BILL OF MATERIAL

Item	Unit	Total
Controlled Low-Strength Material (Special)	Cu. Yd.	4.6



USER NAME = DanielPruchnick	DESIGNED - HP	REVISED - ####
PLOT SCALE = \$SCALE\$	DRAWN - DP	REVISED - ####
PLOT DATE = 1/19/2026	CHECKED - VP	REVISED - ####
	DATE - 01/29/2026	REVISED - ####

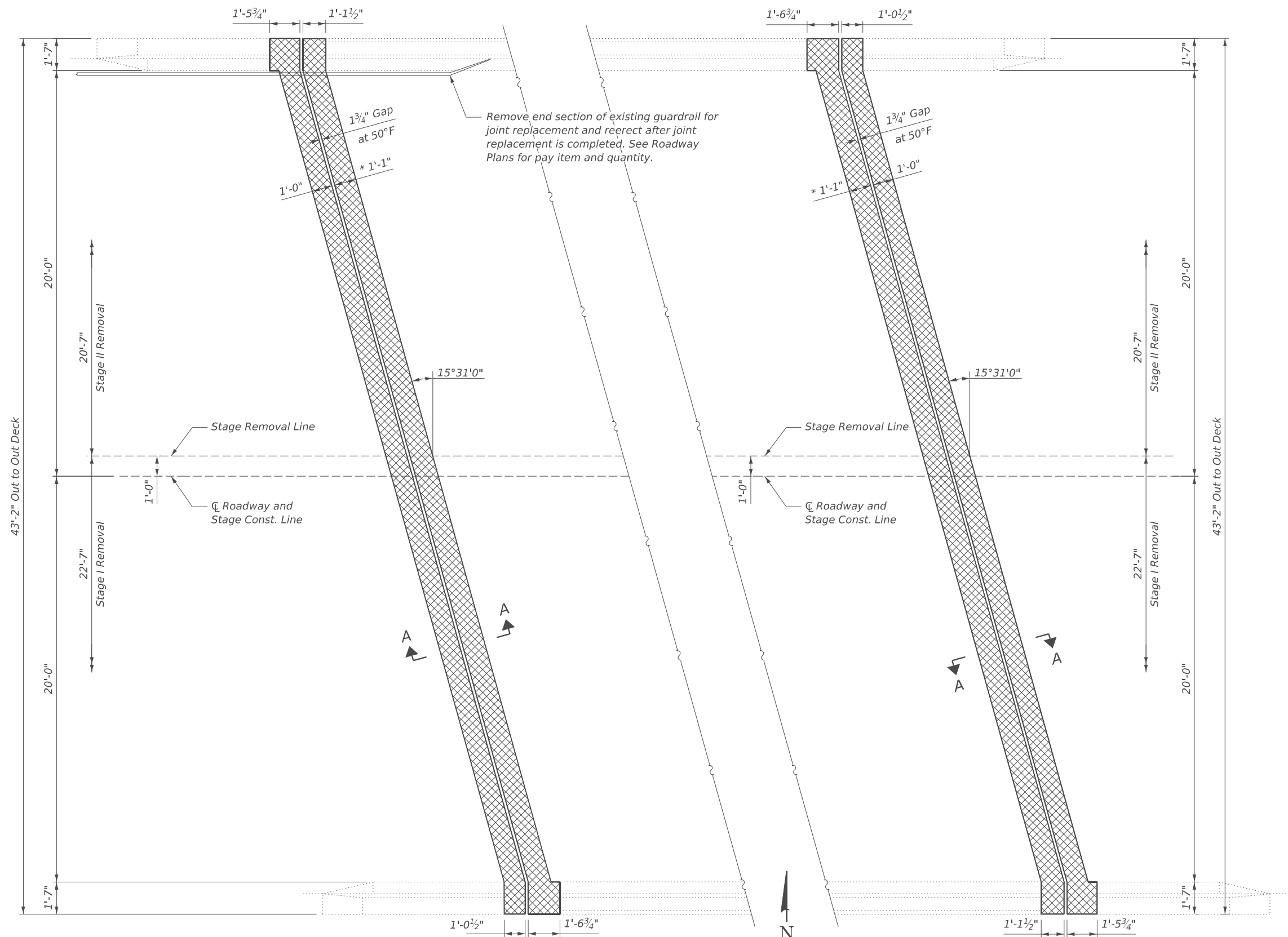
**STATE OF ILLINOIS
DEPARTMENT OF TRANSPORTATION**

**APPROACH SLAB REPAIR DETAILS
STRUCTURE NO.038-0037**

SHEET S-5 OF S-12 SHEETS

F.A.P. RTE.	SECTION	COUNTY	TOTAL SHEETS	SHEET NO.
317	(19-BR-1)BRR	IROQUOIS	26	17
ILLINOIS FED. AID PROJECT			CONTRACT NO. 66R61	

Note:
Existing reinforcement bars extending into the removal area shall be cleaned, straightened, and incorporated into the new construction. Any reinforcement bars that are damaged during concrete removal shall be replaced with an approved bar splicer or anchorage system at the contractors expense.



WEST ABUTMENT

EAST ABUTMENT

LEGEND

 Concrete Removal

(*) The noted deck removal dimension is for the proposed deck gap (in next sheet) based on a Rolled Rail Strip Seal Joint. If Contractor elects to use the Welded Rail Strip Seal Joint, deck removal dimensions may require adjustments to satisfy the details on Base Sheet S-9. See Preformed Joint Strip Seal sheet for more details.

MODEL: Br Sheet Consultant
FILE NAME: C:\Users\DanielPruchnick\10-4 Engineering - Documents\Projects\02-103-00 IDOT PTB 213-037 D3 Phase II V-1600 CADD DESIGN\606 Structural\WO-1_C66R61\Sheet\Removal.dgn



USER NAME = DanielPruchnick	DESIGNED - HP	REVISED - ####
PLOT SCALE = \$SCALE\$	DRAWN - DP	REVISED - ####
PLOT DATE = 1/19/2026	CHECKED - VP	REVISED - ####
	DATE - 01/29/2026	REVISED - ####

STATE OF ILLINOIS
DEPARTMENT OF TRANSPORTATION

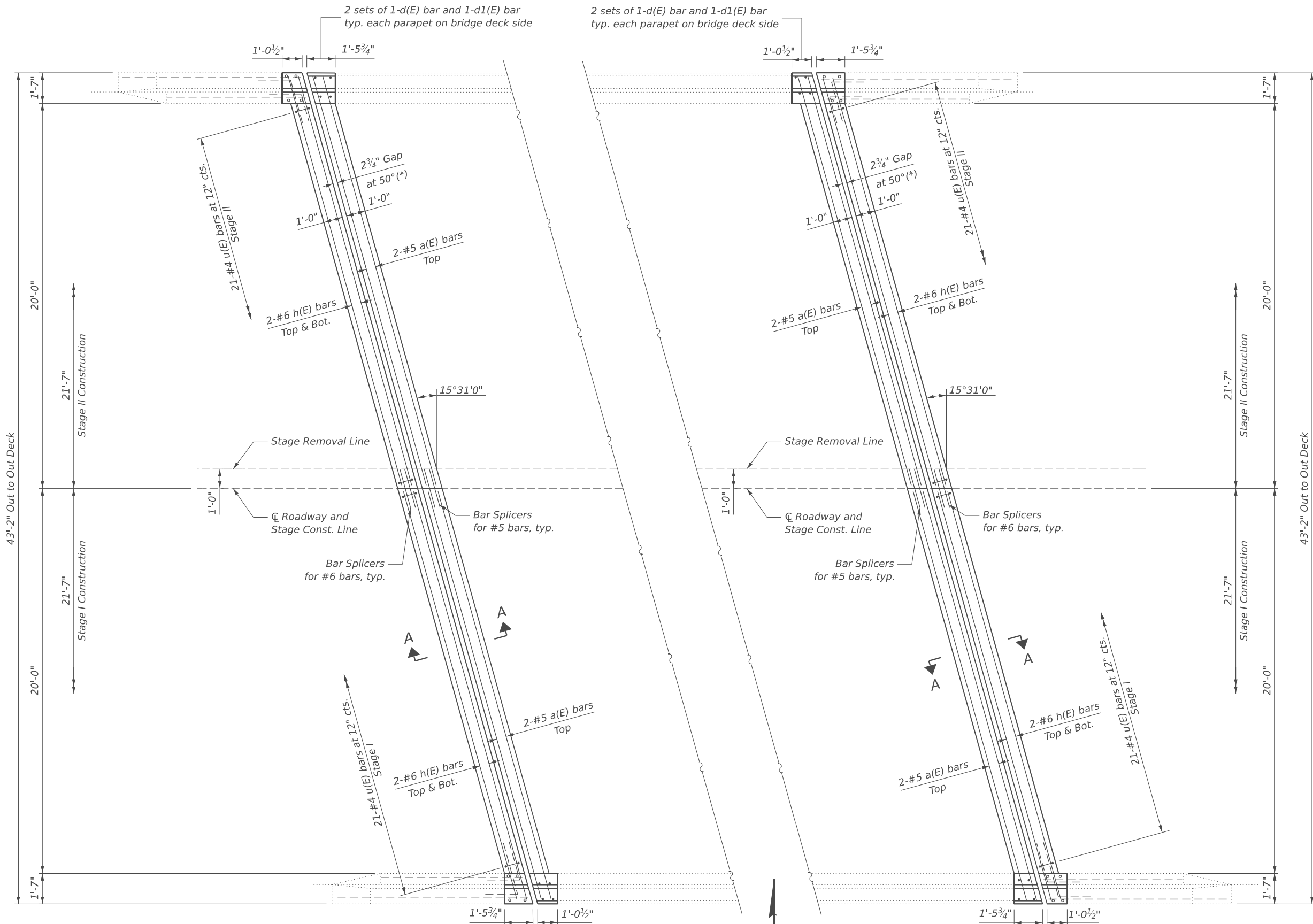
REMOVAL DETAILS
STRUCTURE NO.038-0037

SHEET S-6 OF S-12 SHEETS

F.A.P. RTE.	SECTION	COUNTY	TOTAL SHEETS	SHEET NO.
317	(19-BR-1)BRR	IROQUOIS	26	18
CONTRACT NO. 66R61				

ILLINOIS FED. AID PROJECT

MODEL: Br_Shee_Consultant
 FILE NAME: C:\Users\DanielPruchnick\10-4 Engineering - Documents\Projects\02-103-00 IDOT PTB 218-037 D3 Phase II V-V600 CADD DESIGN\606 Structural\WC-1_C66R61\SheetPage 7_Expansion Joint Replacement.dgn



(*) The noted deck dimension is for the proposed deck gap (in next sheet) based on a Rolled Rail Strip Seal Joint. If Contractor elects to use the Welded Rail Strip Seal Joint, deck dimensions may require adjustments to satisfy the details on Base Sheet S-9. See Preformed Joint Strip Seal sheet for more details.

WEST ABUTMENT

EAST ABUTMENT

**STATE OF ILLINOIS
 DEPARTMENT OF TRANSPORTATION**

**RECONSTRUCTION DETAILS
 STRUCTURE NO.038-0037**

SHEET S-7 OF S-12 SHEETS



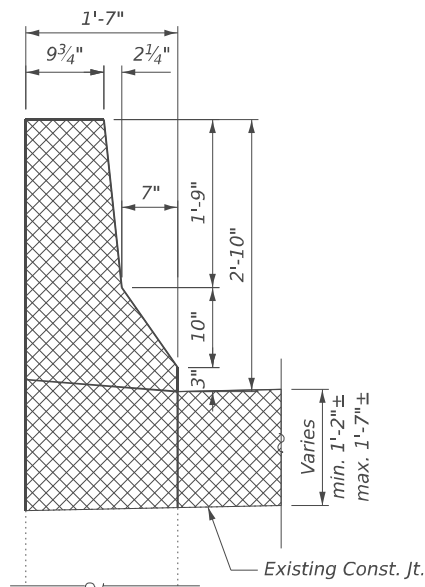
USER NAME = DanielPruchnick
 PLOT SCALE = \$SCALE\$
 PLOT DATE = 1/19/2026

DESIGNED - HP
 DRAWN - DP
 CHECKED - VP
 DATE - 01/29/2026

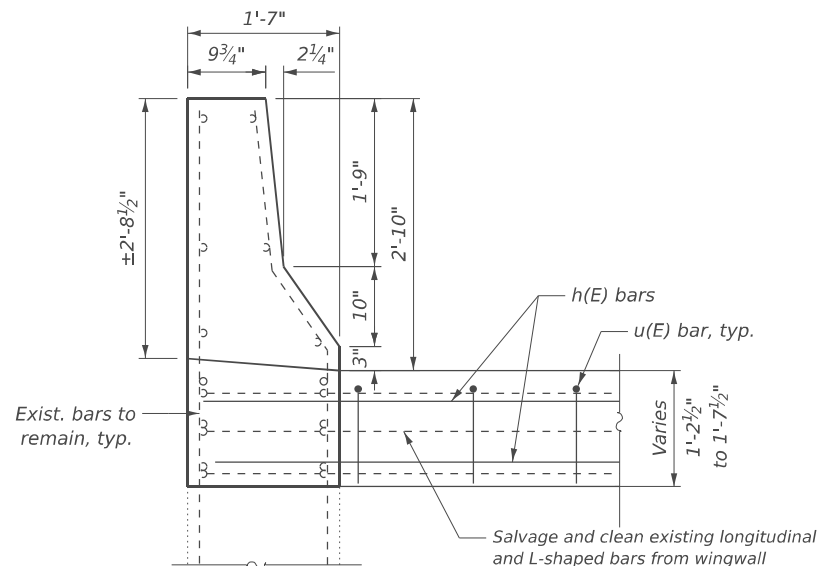
REVISED - ####
 REVISED - ####
 REVISED - ####
 REVISED - ####

F.A.P. RTE.	SECTION	COUNTY	TOTAL SHEETS	SHEET NO.
317	(19-BR-1)BRR	IROQUOIS	26	19
CONTRACT NO. 66R61				
ILLINOIS FED. AID PROJECT				

MODEL: Br_Shee_Consultant
 FILE NAME: C:\Users\DanielPruchnick\10-4 Engineering - Documents\Projects\02-103-00 IDOT PTB 213-037 D3 Phase II V-V600 CADD DESIGN\606 Structural\WC-1_C66R61\SheetPage 8_Expansion Joint Sections_Details_Bar List.dgn

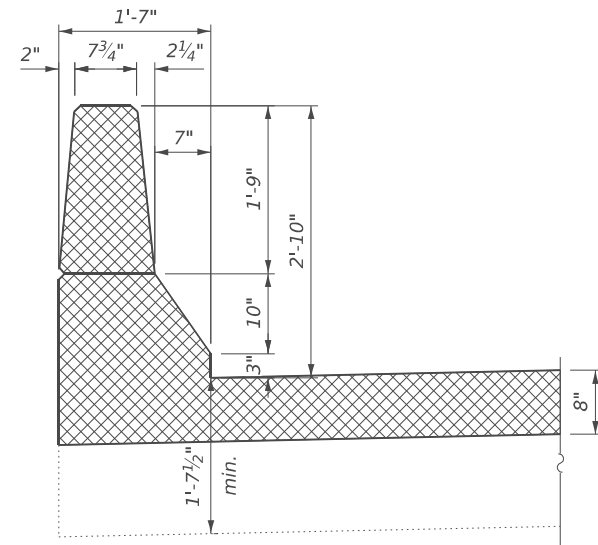


SECTION THRU WING WALL (REMOVAL)
 (West Abut. Shown, East Abut. similar)

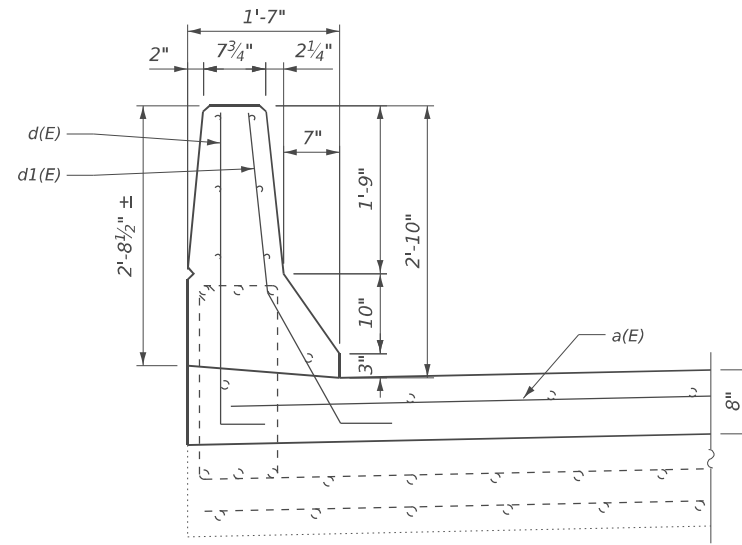


SECTION THRU WING WALL (RECONSTRUCTION)
 (West Abut. Shown, East Abut. similar)

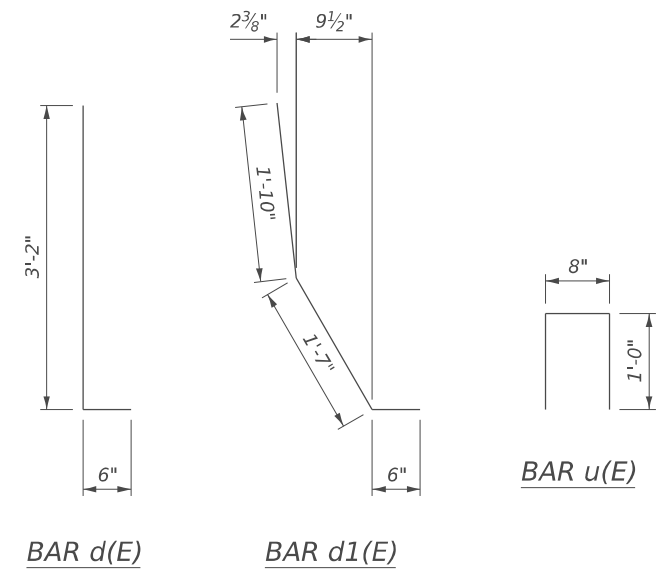
Note:
 Existing reinforcement bars extending into the removal area shall be cleaned, straightened, and incorporated into the new construction. Any reinforcement bars that are damaged during concrete removal shall be replaced with an approved bar splicer or anchorage system at the contractor's expense.



SECTION THRU PARAPET (REMOVAL)
 (West Abut. Shown, East Abut. similar)

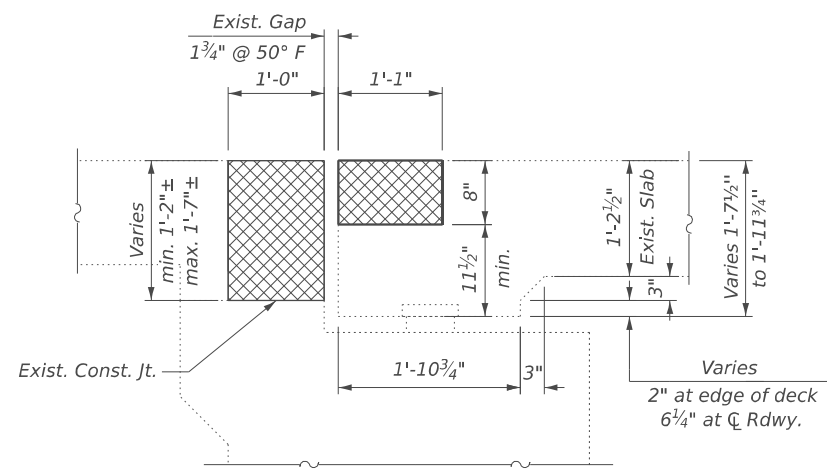


SECTION THRU PARAPET (RECONSTRUCTION)
 (West Abut. Shown, East Abut. similar)

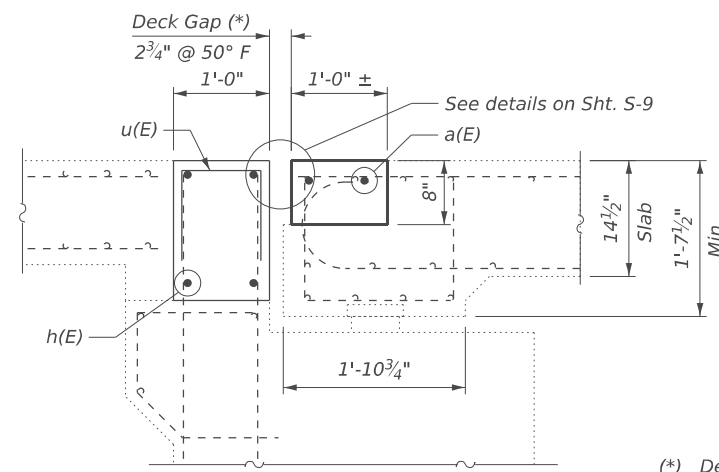


BAR LIST - BOTH ABUTMENTS

Bar	No.	Size	Length	Shape
a(E)	8	#5	21'-8"	—
d(E)	8	#5	3'-8"	┌
d1(E)	8	#5	3'-11"	└
h(E)	16	#6	22'-1"	—
u(E)	84	#4	2'-8"	└



SECTION A-A (REMOVAL)
 (West Abut. Shown, East Abut. similar)



SECTION A-A (RECONSTRUCTION)
 (West Abut. Shown, East Abut. similar)

Note:
 Dimensions are at right angles to abutment unless otherwise noted.

(*) Deck gap dimension noted is based on a Rolled Rail Strip Seal Joint. If Contractor elects to use the Welded Rail Strip Seal Joint, deck dimensions may require adjustments to satisfy the details on Base Sheet S-9. Please see Preformed Joint Strip Seal sheet for more details.

BILL OF MATERIAL

Item	Unit	Total
Concrete Removal	Cu. Yd.	7.9
Concrete Superstructure	Cu. Yd.	7.7
Protective Coat	Sq. Yd.	23
Reinforcement Bars, Epoxy Coated	Pound	930
Bar Splicers	Each	12



USER NAME = DanielPruchnick
 PLOT SCALE = \$SCALE\$
 PLOT DATE = 1/19/2026

DESIGNED - HP
 DRAWN - DP
 CHECKED - VP
 DATE - 01/29/2026

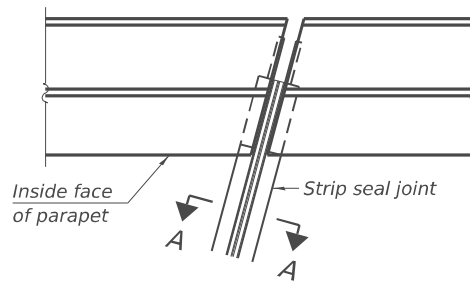
REVISED - ####
 REVISED - ####
 REVISED - ####
 REVISED - ####

STATE OF ILLINOIS
 DEPARTMENT OF TRANSPORTATION

EXPANSION JOINT SECTIONS, DETAILS, & BAR LIST
 STRUCTURE NO.038-0037

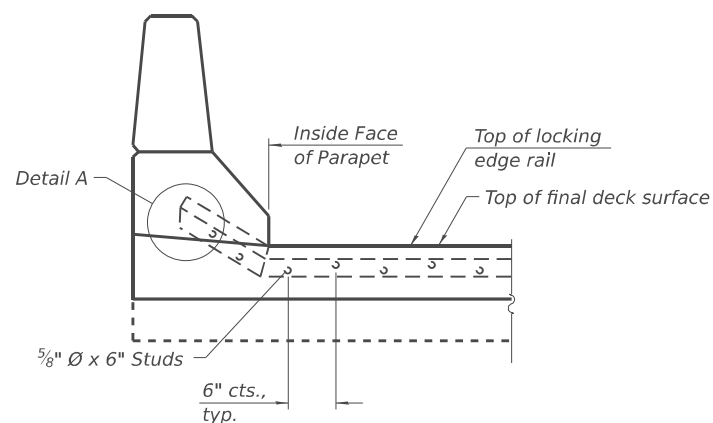
SHEET S-8 OF S-12 SHEETS

F.A.P. RTE.	SECTION	COUNTY	TOTAL SHEETS	SHEET NO.
317	(19-BR-1)BRR	IROQUOIS	26	20
CONTRACT NO. 66R61				
ILLINOIS FED. AID PROJECT				

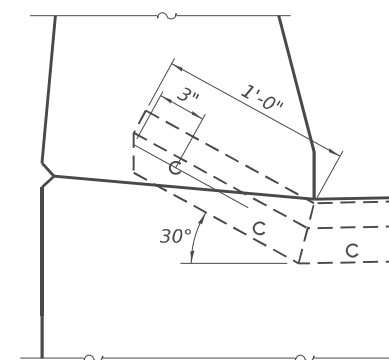


FOR SKEWS ≤ 30°

PLAN AT PARAPET

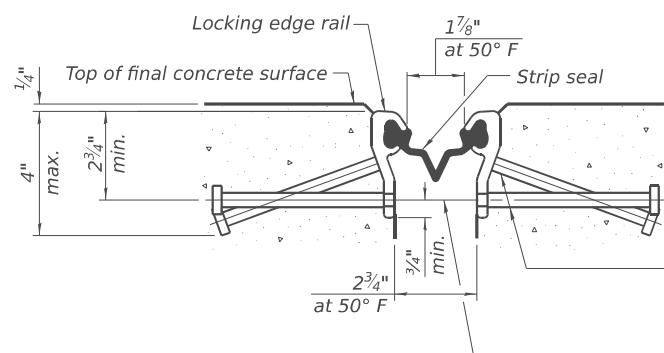


SECTION AT PARAPET



DETAIL A

(Kick-up at parapet locations shown. See sheet of for kick-up at curb locations.)



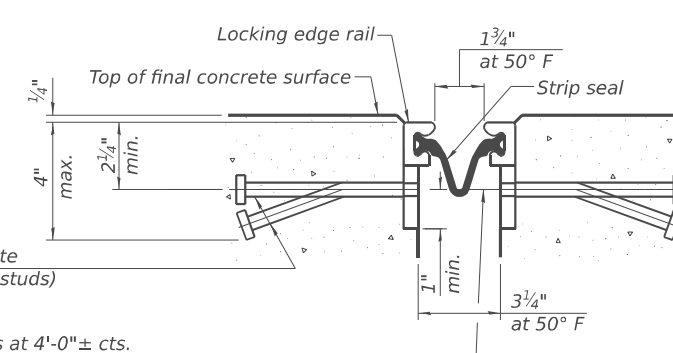
SHOWING ROLLED RAIL JOINT

* 5/8" Ø x 6" studs @ 6" cts. (alternate angled/bent studs with horizontal studs)

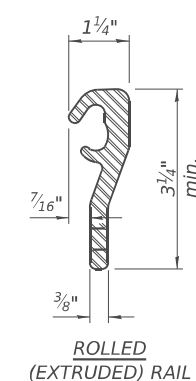
3/8" Ø threaded rods in 7/16" Ø holes at 4'-0" ± cts. for holding the proper joint opening based on the temperature during the deck pour. Place to miss studs. All rods shall be burned, or sawed off flush with the plates after concrete is set.

SECTION A-A

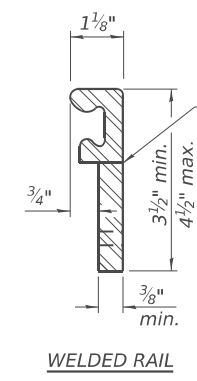
* Granular or solid flux filled headed studs conforming to Article 1006.32 of the Std. Specs., automatically end welded.



SHOWING WELDED RAIL JOINT



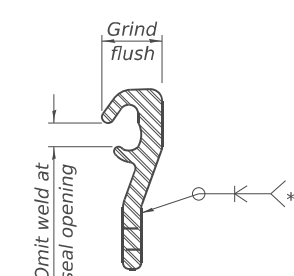
ROLLED (EXTRUDED) RAIL



WELDED RAIL

LOCKING EDGE RAILS

** Back gouge not required if complete joint penetration is verified by mock-up.



LOCKING EDGE RAIL SPLICE

The inside of the locking edge rail groove shall be free of weld residue. Rolled rail shown, welded rail similar.

BILL OF MATERIAL

Item	Unit	Total
Preformed Joint Strip Seal	Foot	88

Notes:

The strip seal shall be made continuous and shall have a minimum thickness of 1/4". The configuration of the strip seal shall match the configuration of the locking edge rails. Open or "webbed" strip seal gland configurations are not permitted. The gland shall be sized for a maximum rated movement of 4 inches.

The locking edge rails depicted are configured for typical applications and are conceptual only. The actual configuration of the locking edge rails and matching strip seal may vary from manufacturer to manufacturer provided they fit the application and meet the minimum anchorage shown. Flanged edge rails, however, will not be allowed. Locking edge rails may exceed the 4 1/2" maximum depth provided the anchorage system is revised according to the manufacturer's recommendation.

The manufacturer's recommended installation methods shall be followed.

All steel components shall be galvanized after fabrication according to Article 520.03 of the Standard Specifications.

The Maximum space between locking edge rail segments shall be 3/16" and sealed with a suitable sealant; however, any rail joint within 10' measured perpendicular to the face of the curb or parapet shall be welded as shown in the locking edge rail splice detail.

The concrete opening below the strip seal will vary based on the locking edge rail chosen by the Contractor. Deck and parapet lengths shown elsewhere in the plans are dimensioned to the concrete opening, not the joint opening, and are based on the rolled locking edge rail. If the Contractor elects to use a different locking edge rail, dimensional adjustments may be required. One exception to this would be the strip seal joint at the end of the precast bridge approach slab. For these cases the pavement connector length shall be adjusted, not the length of the bridge approach slab.

MODEL: Br Sheet Consultant
FILE NAME: C:\Users\DanielPruchnick\10-4 Engineering\10-4 Engineering\Projects\02-103-00 IDOT PTB 213-037 D3 Phase II V-1600 CADD DESIGN\606 Structural\WC-1_C66R61\Sheet\Page 9_Prefomed Joint Seal Details.dgn

EJ-SS

4-4-2025



USER NAME = DanielPruchnick	DESIGNED - HP	REVISED - ####
PLOT SCALE = \$SCALE\$	DRAWN - DP	REVISED - ####
PLOT DATE = 1/19/2026	CHECKED - VP	REVISED - ####
	DATE - 01/29/2026	REVISED - ####

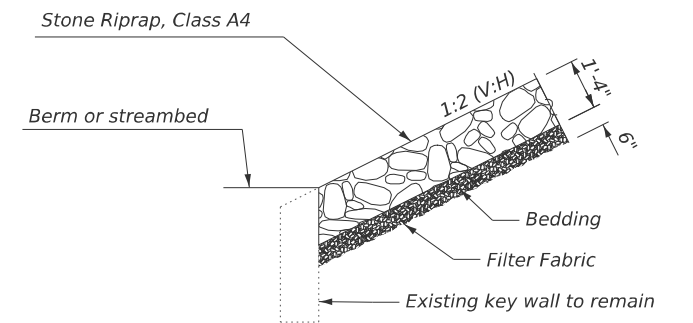
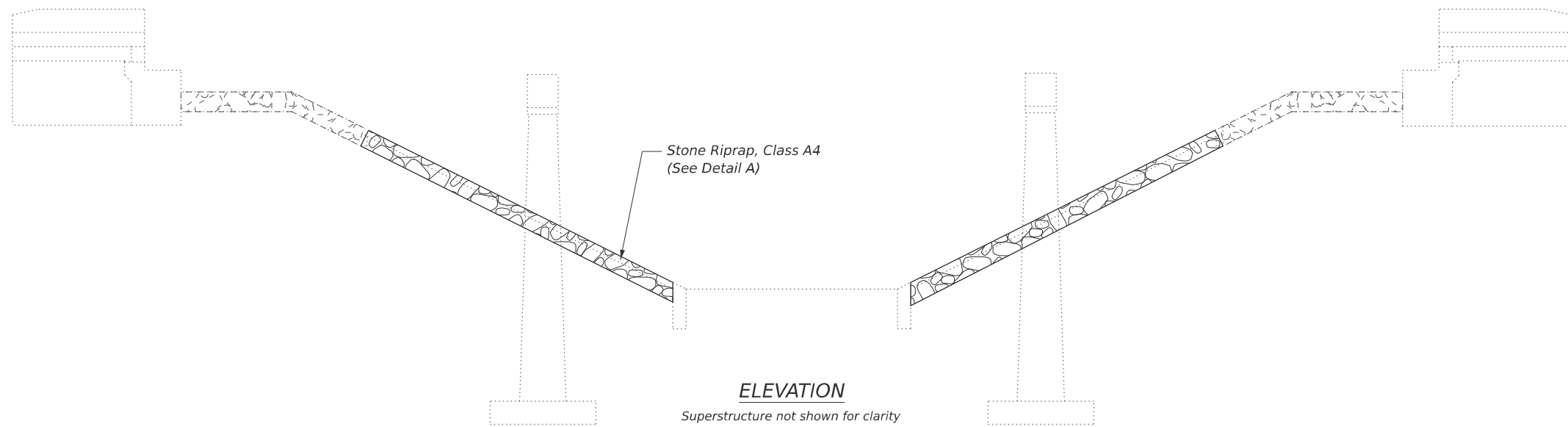
STATE OF ILLINOIS
DEPARTMENT OF TRANSPORTATION

PREFORMED JOINT STRIP SEAL
STRUCTURE NO.038-0037

SHEET S-9 OF S-12 SHEETS

F.A.P. RTE. 317	SECTION (19-BR-1)BRR	COUNTY IROQUOIS	TOTAL SHEETS 26	SHEET NO. 21
CONTRACT NO. 66R61				
ILLINOIS FED. AID PROJECT				

MODEL: Br_Sheet_Constant
 FILE NAME: C:\Users\DanielPruchnick\10-4_Engineering - Documents\Projects\02-103-00_IDOT PTB 213-037_D3 Phase II V-V1600 CADD DESIGN\606 Structural\WC-1_C66R61\Sheet\Page 10_Slopedwall Repairs.dgn

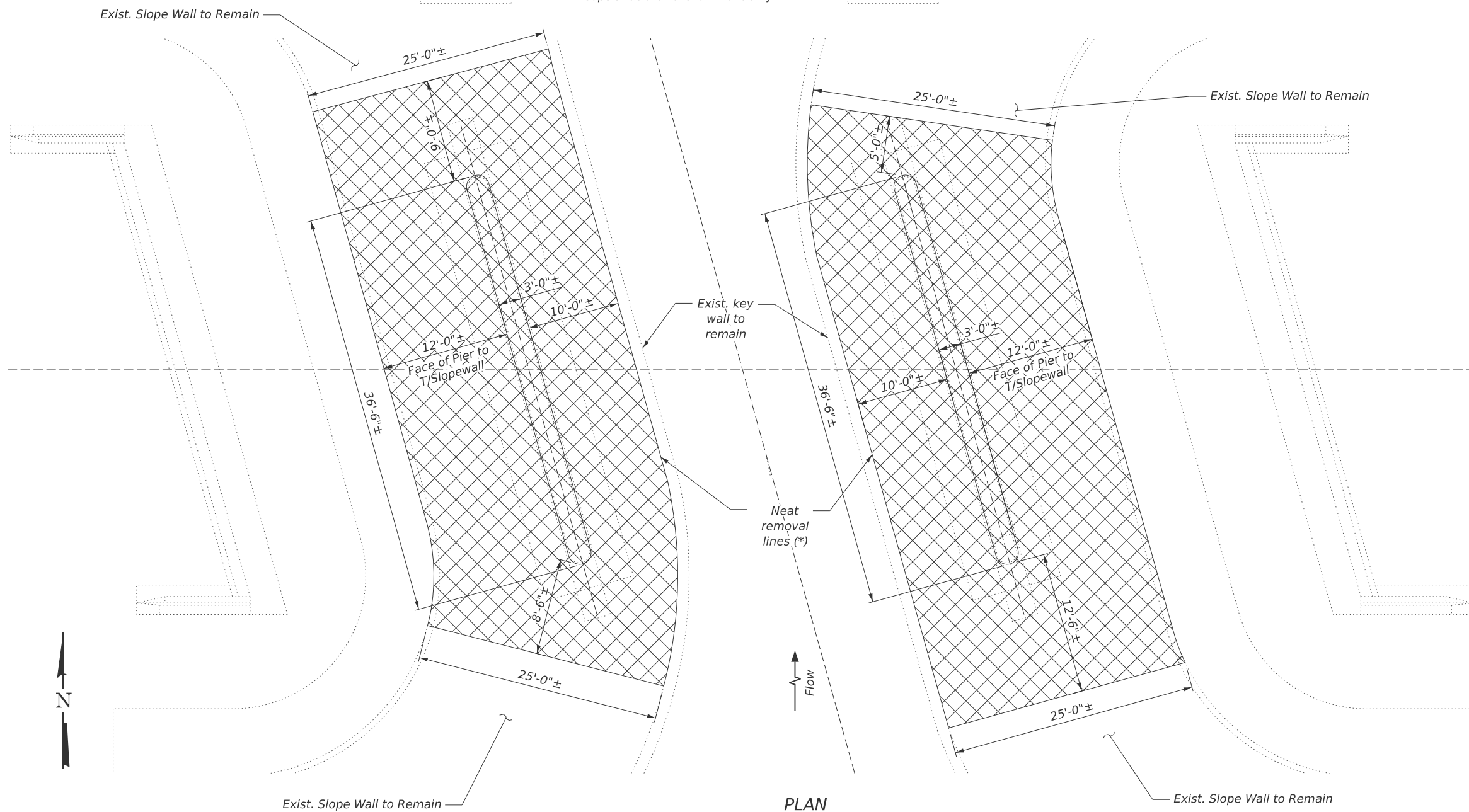


DETAIL A

* Required thickness may vary based on actual field conditions

Note:
 Use extreme care when removing the sloped wall and not damage the existing key wall to remain and the existing abutment or pier structures.

(* Use saw cut if necessary)



LEGEND

 Slope Wall Removal, Filter Fabric & Stone Riprap, Class A4

BILL OF MATERIAL

Item	Unit	Total
Slope Wall Removal	Sq. Yd.	270.8
Stone Riprap, Class A4	Sq. Yd.	280
Filter Fabric	Sq. Yd.	280

USER NAME = DanielPruchnick	DESIGNED - HP	REVISED - ####
	DRAWN - DP	REVISED - ####
PLOT SCALE = \$SCALE\$	CHECKED - VP	REVISED - ####
PLOT DATE = 2/18/2026	DATE - 01/29/2026	REVISED - ####

**STATE OF ILLINOIS
 DEPARTMENT OF TRANSPORTATION**

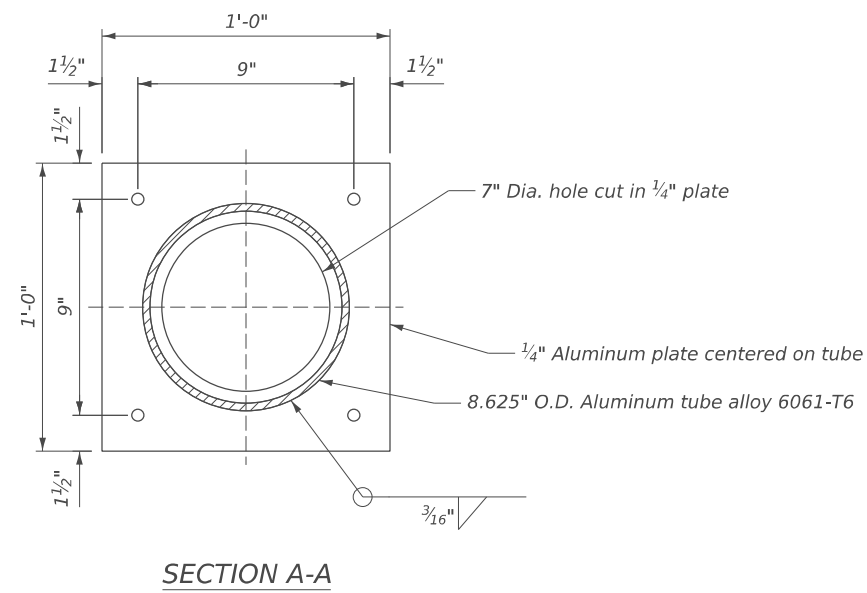
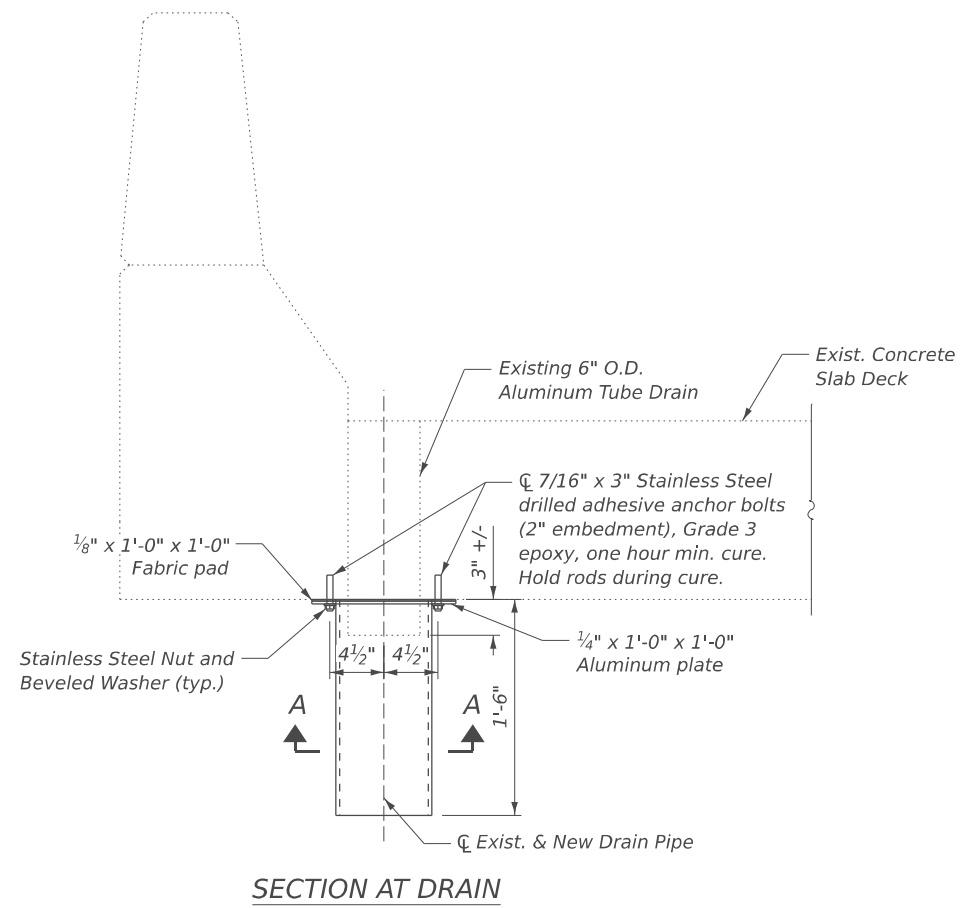
**SLOPEWALL REPAIRS
 STRUCTURE NO.038-0037**

SHEET S-10 OF S-12 SHEETS

F.A.P. RTE.	SECTION	COUNTY	TOTAL SHEETS	SHEET NO.
317	(19-BR-1)BRR	IROQUOIS	26	22
CONTRACT NO. 66R61				

ILLINOIS FED. AID PROJECT

MODEL: Br Sheet Consultant
 FILE NAME: C:\Users\DanielPruchnick\10-4 Engineering - Documents\Projects\02-103-00 IDOT PTB 213-037 D3 Phase II V-1600 CADD DESIGN\606 Structural\WC-1_C66R61\Sheet\Page 11_Miscellaneous Repairs.dgn



FLOOR DRAIN EXTENSION

BILL OF MATERIAL

Item	Unit	Total
Deck Drain Extensions	Each	6



USER NAME = DanielPruchnick	DESIGNED - HP	REVISED - ####
	DRAWN - DP	REVISED - ####
PLOT SCALE = \$SCALE\$	CHECKED - VP	REVISED - ####
PLOT DATE = 1/19/2026	DATE - 01/29/2026	REVISED - ####

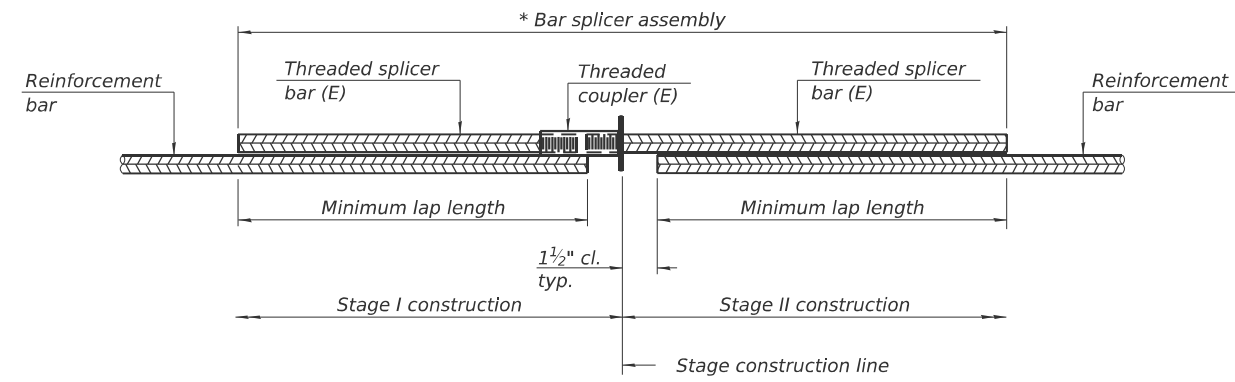
STATE OF ILLINOIS
 DEPARTMENT OF TRANSPORTATION

MISCELLANEOUS REPAIRS
 STRUCTURE NO.038-0037

SHEET S-11 OF S-12 SHEETS

F.A.P. RTE.	SECTION	COUNTY	TOTAL SHEETS	SHEET NO.
317	(19-BR-1)BRR	IROQUOIS	26	23
			CONTRACT NO. 66R61	
		ILLINOIS FED. AID PROJECT		

MODEL: B_Sheet_Constant
FILE NAME: C:\Users\DanielP\Documents\Projects\02-105-00 IDOT PTB 213-037 D3 Phase II V-VI600 CADD DESIGN\06 Structural\WO-1_C66R61\Sheet\12_Bar Splicer Assembly Details.dgn

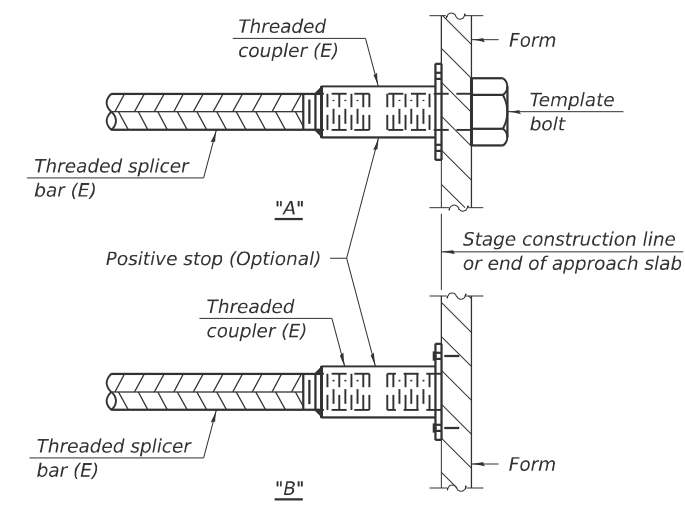


STANDARD BAR SPLICER ASSEMBLY PLAN
Only bar splicer assemblies as presented on the approved QPL list may be used.

Threaded splicer bar length = min. lap length + 1 1/2" + thread length

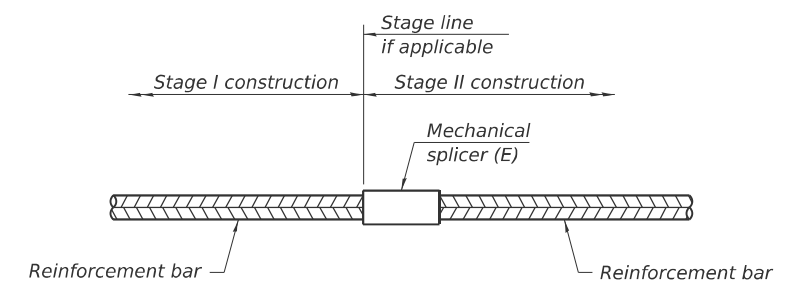
* Epoxy not required on Bar Splicer Assembly components used in conjunction with black bars.

Location	Bar size	No. assemblies required	Minimum lap length
W. Abut. - Deck	#5	2	2'-10"
W. Abut. - (Block out)	#6	4	4'-5"
E. Abut. - Deck	#5	2	2'-10"
E. Abut. - (Block out)	#6	4	4'-5"



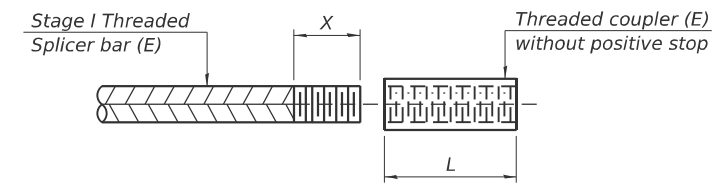
INSTALLATION AND SETTING METHODS

"A" : Set bar splicer assembly by means of a template bolt.
"B" : Set bar splicer assembly by nailing to wood forms or cementing to steel forms.
(E) : Indicates epoxy coating.



STANDARD MECHANICAL SPLICER

Location	Bar size	No. assemblies required



THREADING OF ASSEMBLIES

The threaded length "X" shall be no more than L/2. The bar should be tightened until 0-1 thread(s) is/are exposed.

Notes:
Splicer bars shall be deformed with threaded ends and have a minimum 60 ksi yield strength.
All reinforcement shall be lapped and tied to the splicer bars.
Bar splicer assemblies shall be epoxy coated according to the requirements for reinforcement bars. See Section 508 of the Standard Specifications.
See approved list of bar splicer assemblies and mechanical splicers for alternatives.

BSD-1

4-4-2025

USER NAME = DanielPruchnick	DESIGNED - HP	REVISED - ####
	DRAWN - DP	REVISED - ####
PLOT SCALE = \$SCALE\$	CHECKED - VP	REVISED - ####
PLOT DATE = 1/28/2026	DATE - 01/29/2026	REVISED - ####

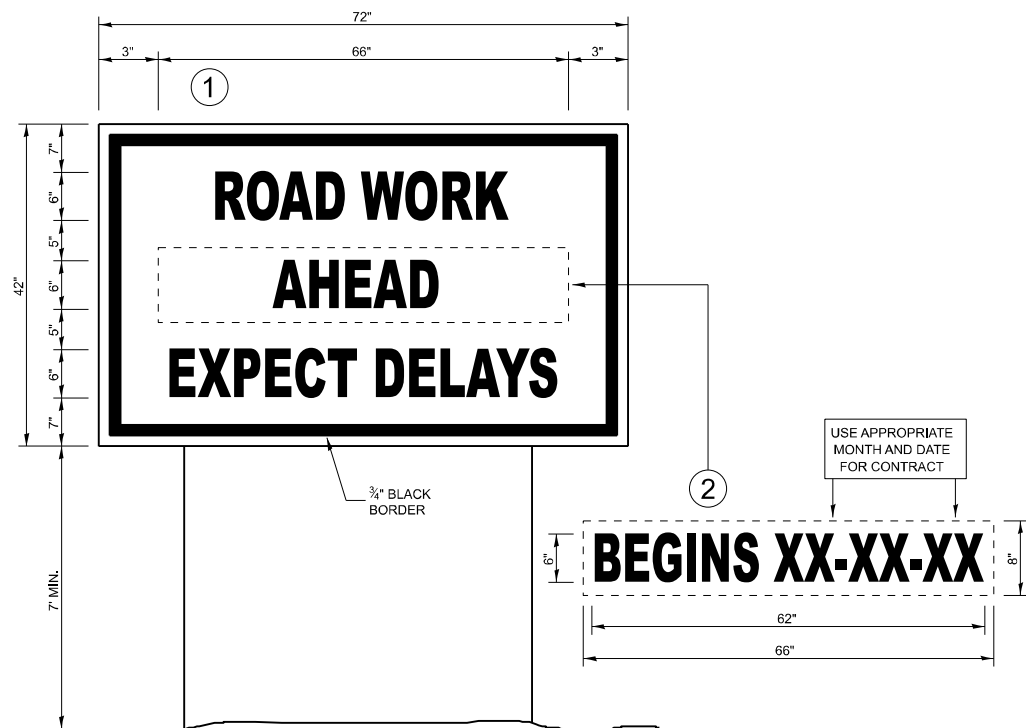
**STATE OF ILLINOIS
DEPARTMENT OF TRANSPORTATION**

**BAR SPLICER ASSEMBLY AND MECHANICAL SPLICER DETAILS
STRUCTURE NO.038-0037**

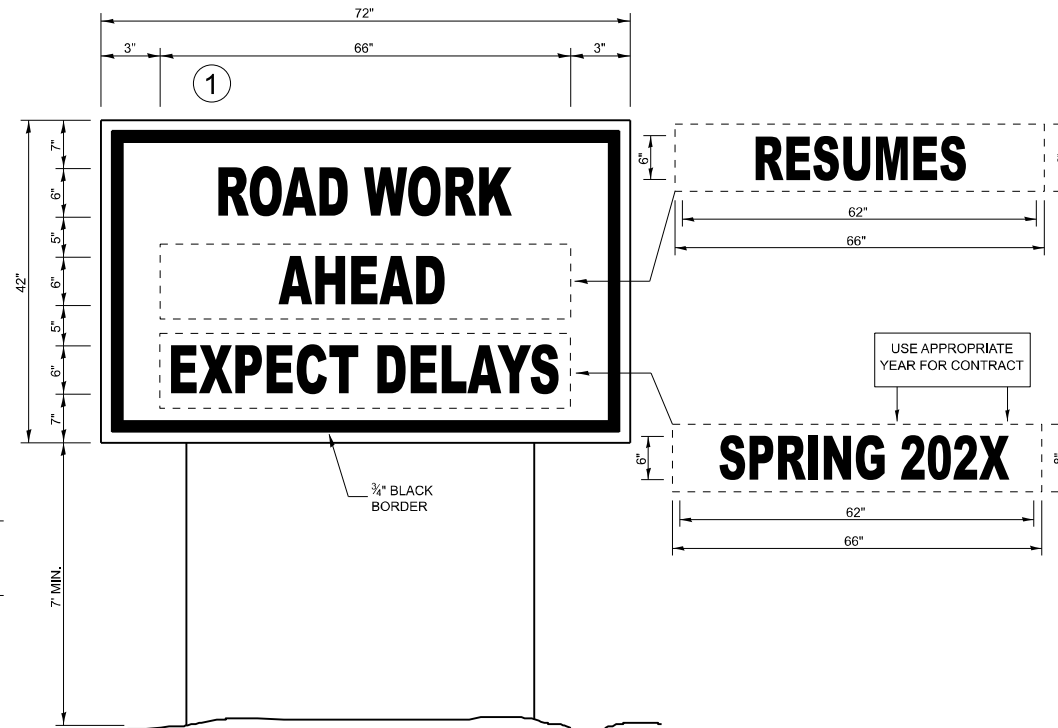
SHEET S-12 OF S-12 SHEETS

F.A.P. RTE.	SECTION	COUNTY	TOTAL SHEETS	SHEET NO.
317	(19-BR-1)BRR	IROQUOIS	26	24
CONTRACT NO. 66R61				

ILLINOIS FED. AID PROJECT



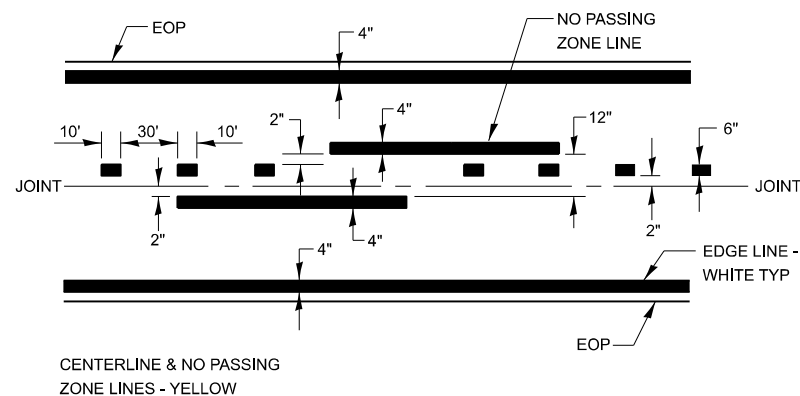
TEMPORARY INFORMATION SIGNING



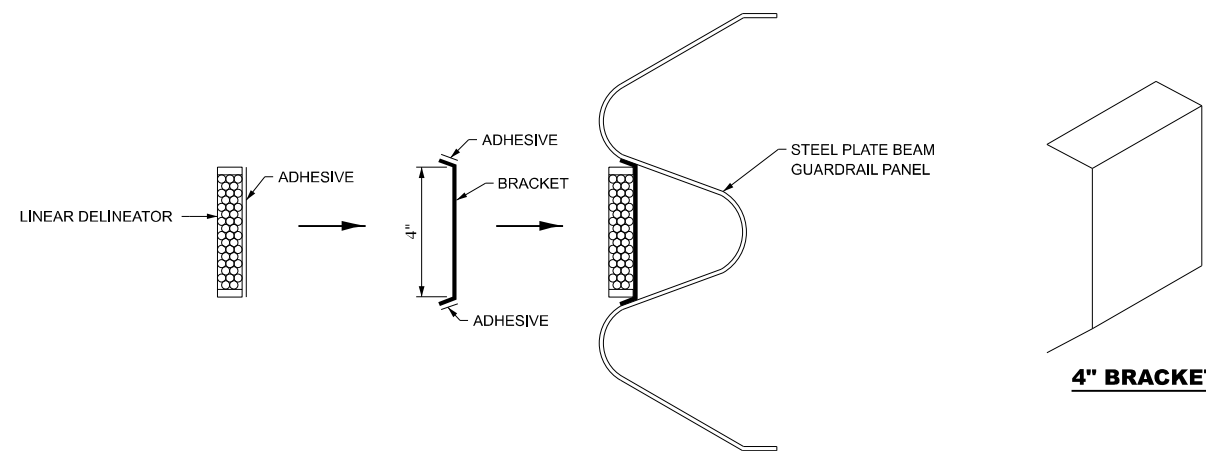
WINTER SHUT DOWN SIGNING

NOTES:

1. USE 6" D BLACK LETTERING ON FLOURESENT ORANGE BACKGROUND.
2. ERECT SIGNS AT LOCATIONS IN ADVANCE OF THE "ROAD CONSTRUCTION AHEAD" SIGNS AS DIRECTED BY THE ENGINEER.
3. ERECT SIGN ① WITH INSTALLED PANEL ② A MINIMUM OF ONE WEEK PRIOR TO THE START OF THE LANE CLOSURE.
4. REMOVE PANEL ② ON THAT DATE.
5. SEE SPECIAL PROVISION "TEMPORARY INFORMATION SIGNING" FOR ADDITIONAL INFORMATION.
6. WILL BE PAID FOR PER SQ FT AS "TEMPORARY INFORMATION SIGNING". EACH SIGN = 21 SQ FT AND THE DATE PANEL ② WILL NOT BE MEASURED SEPARATELY FOR PAYMENT.



PAVEMENT MARKING



LINEAR DELINEATOR APPLICATION TO STANDARD GALVANIZED GUARDRAIL

LINEATOR DELINEATOR SHALL BE APPLIED ACCORDING TO THE MANUFACTURER'S RECOMMENDATIONS

MODEL - Details (Sheet)
FILE NAME: E:\2022-1\CADD_Sheets\0366661-eh-Detail.dgn



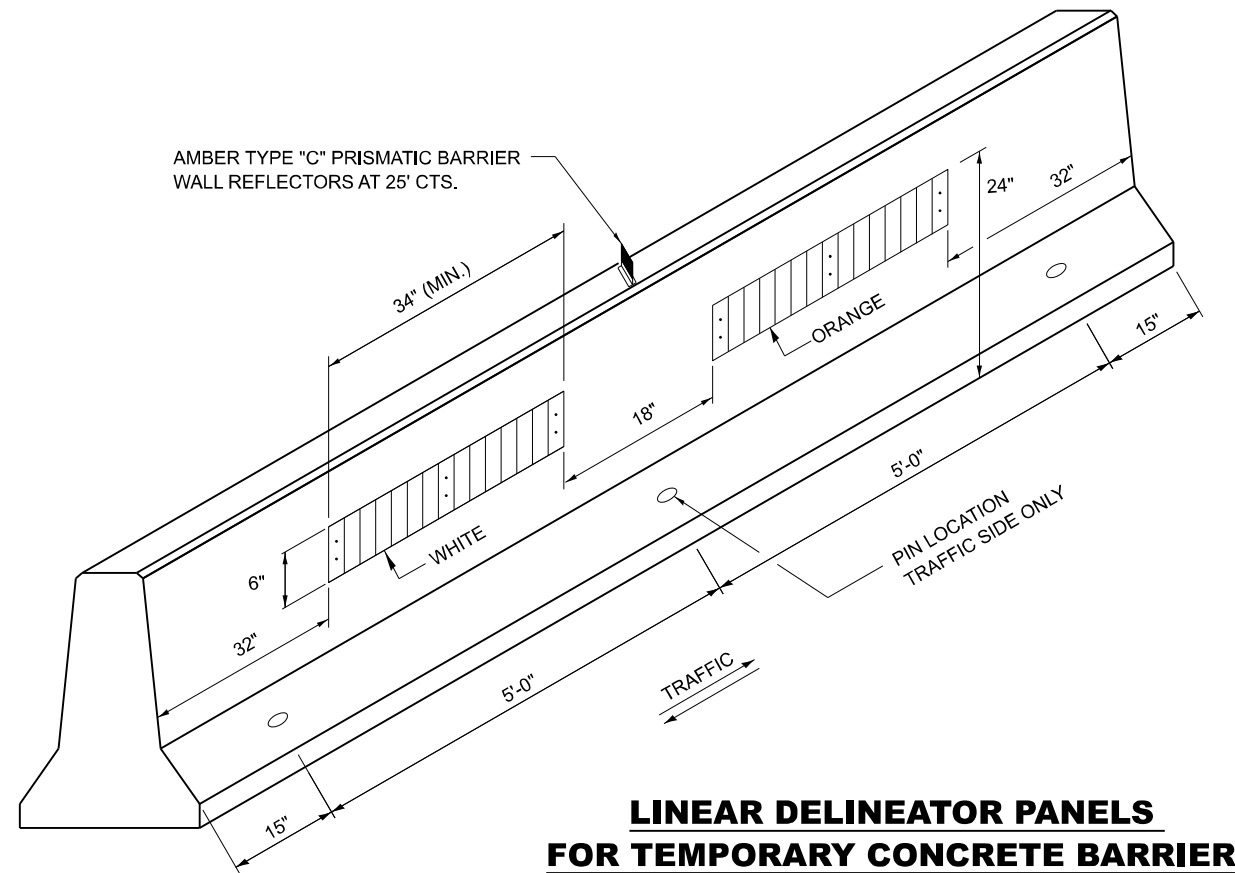
USER NAME = 14nho	DESIGNED - NH	REVISED -
PLOT SCALE = 0.16666667 / in.	DRAWN - NH	REVISED -
PLOT DATE = 11/26/2025	CHECKED - RC	REVISED -
	DATE - 1/2026	REVISED -

**STATE OF ILLINOIS
DEPARTMENT OF TRANSPORTATION**

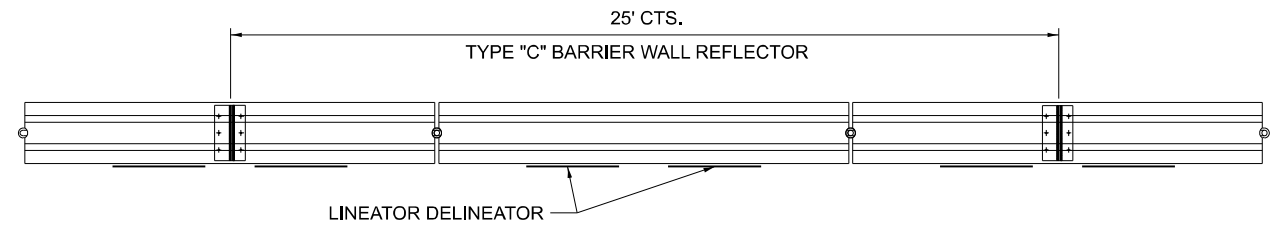
**US RTE 24 OVER RAYMOND CREEK
DETAILS**

SCALE: N.T.S. SHEET 1 OF 2 SHEETS STA. TO STA.

F.A.P. RTE.	SECTION	COUNTY	TOTAL SHEETS	SHEET NO.
317	(19-BR-1)BRR	IROQUOIS	26	25
CONTRACT NO. 66R61				
ILLINOIS FED. AID PROJECT				

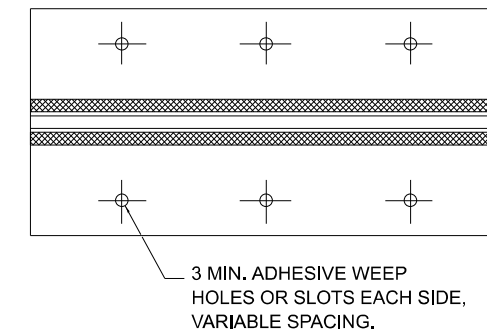
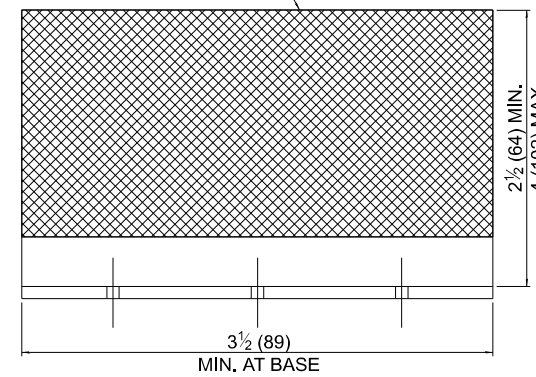


LINEAR DELINEATOR PANELS FOR TEMPORARY CONCRETE BARRIER

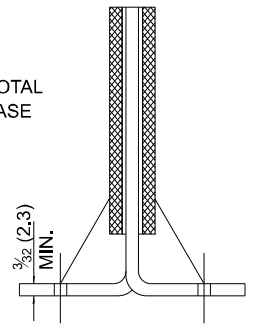


TYPE "C" REFLECTOR FOR TEMPORARY CONCRETE BARRIER

REFLECTIVE AREA, MAY BE RECTANGULAR OR SLIGHT TRAPEZOID.



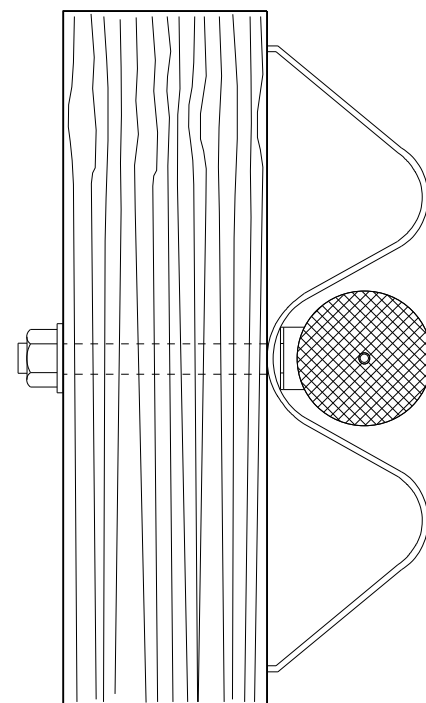
MINIMUM TOTAL AREA OF BASE 7.0 SQ. IN.



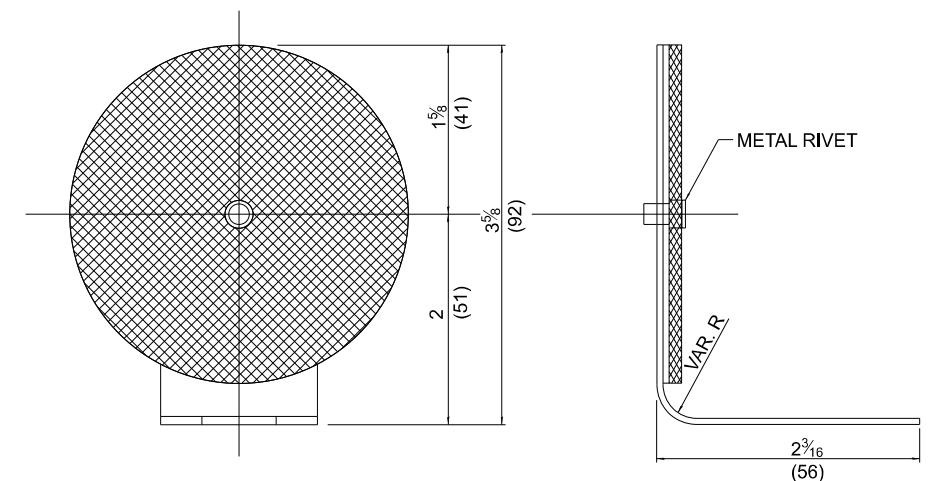
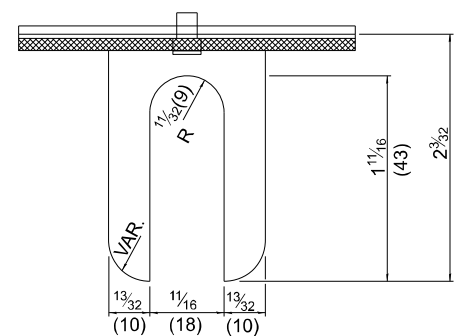
CROSS SECTION MAY BE "T" OR "L" SHAPED AND MAY HAVE SIDE SUPPORTS AT ENDS.

REFLECTOR TYPE C

TEMPORARY CONCRETE BARRAIER WALL



TYPICAL MOUNTING DETAIL FOR GUARDRAIL TYPE "A" REFLECTOR



REFLECTOR TYPE A

(MONODIRECTIONAL SHOWN)
STEEL PLATE BEAM GUARDRAIL

MODEL: Default
FILE NAME: E:\2422-1\CADD_Sheets\366861-stt-detail-GUARDRAIL-BARRIER WALL DELINEATION.dgn

USER NAME = 14nho	DESIGNED - RW	REVISED -
	DRAWN - RW	REVISED -
	CHECKED - YP	REVISED -
PLOT DATE = 11/3/2025	DATE - 6/7/2024	REVISED -

STATE OF ILLINOIS
DEPARTMENT OF TRANSPORTATION

US RTE 24 OVER RAYMOND CREEK
GUARDRAIL / BARRIER WALL DELINEATION DETAILS

SCALE: N.T.S. SHEET 2 OF 2 SHEETS STA. TO STA.

F.A.P. RTE.	SECTION	COUNTY	TOTAL SHEETS	SHEET NO.
317	(19-BR-1)-BRR	IROQUOIS	26	26
CONTRACT NO. 66R61				
ILLINOIS FED. AID PROJECT				