

STATE OF ILLINOIS
DEPARTMENT OF TRANSPORTATION

F.A.S. RTE.	SECTION	COUNTY	TOTAL SHEETS	SHEET NO.
2245	(22B)BRR	BUREAU	26	1
		ILLINOIS	CONTRACT NO. 66R69	

INDEX OF SHEETS

- 1 COVER SHEET
- 2 GENERAL NOTES
- 3 - 5 SUMMARY OF QUANTITIES
- 6 - 7 SCHEDULES OF QUANTITIES
- 8 TYPICAL SECTIONS
- 9 - 12 STAGING PLAN
- 13 PAVEMENT MARKING PLAN
- 14 - 24 STRUCTURAL PLAN
- 25 - 26 DETAILS

HIGHWAY STANDARDS

- 000001-09 STANDARD SYMBOLS, ABBREVIATIONS AND PATTERNS
- 001001-02 AREAS OF REINFORCEMENT BARS
- 001006 DECIMAL OF AN INCH AND OF A FOOT
- 701001-02 OFF-RD OPERATIONS, 2L, 2W, MORE THAN 15' (4.5M) AWAY
- 701006-05 OFF-RD OPERATIONS, 2L, 2W, 15' (4.5M) TO 24" (600MM) FROM PAVEMENT EDGE
- 701011-04 OFF-RD MOVING OPERATIONS 2L, 2W, DAY ONLY
- 701201-05 LANE CLOSURE, 2L, 2W, DAY ONLY, FOR SPEEDS ≥ 45 MPH
- 701301-04 LANE CLOSURE, 2L, 2W, SHORT TIME OPERATIONS
- 701311-03 LANE CLOSURE, 2L, 2W, MOVING OPERATIONS - DAY ONLY
- 701321-19 LANE CLOSURE, 2L, 2W, BRIDGE REPAIR WITH BARRIER
- 701901-11 TRAFFIC CONTROL DEVICES

**PROPOSED
HIGHWAY PLANS**

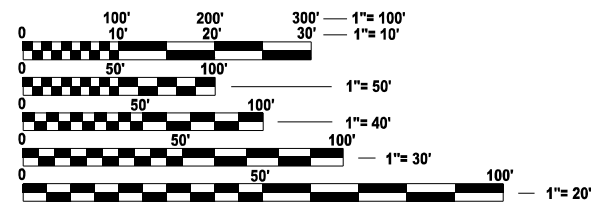
FAS ROUTE 2245 (IL 29)
SECTION (22B)BRR
BRIDGE REPAIR
BUREAU COUNTY

C-93-028-26

R 10 E

T 15 N

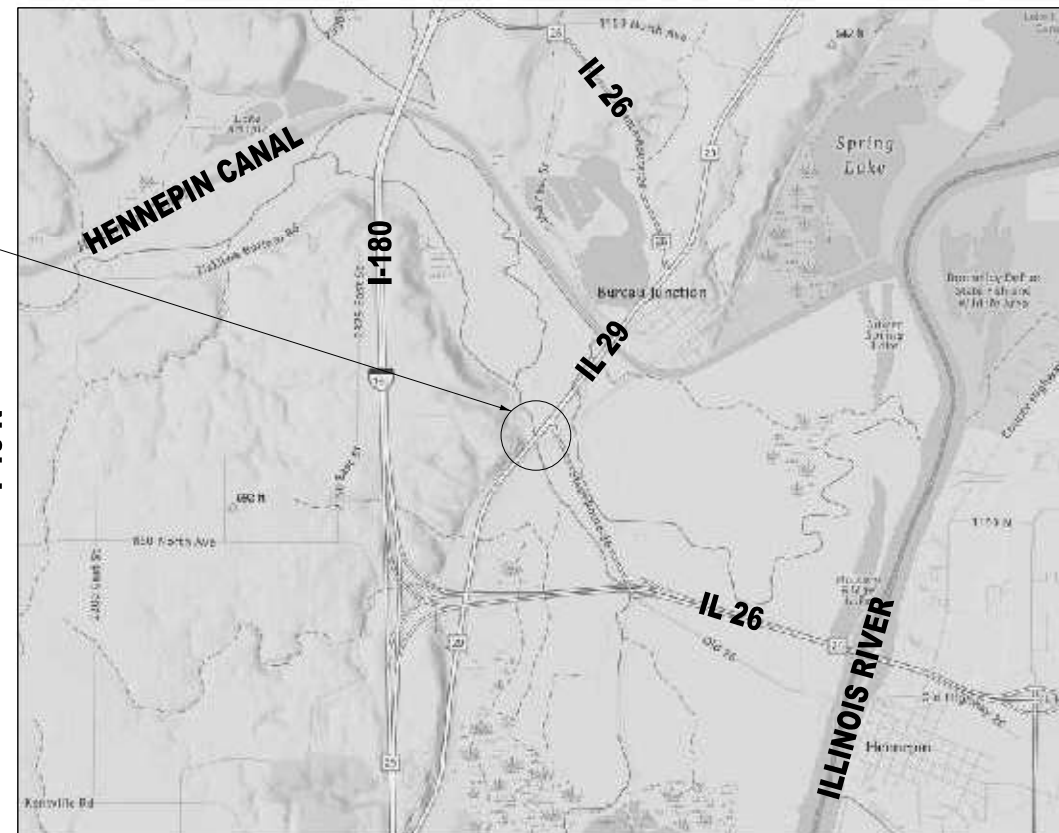
PROJECT LOCATION
STR. NO. 006-0084
(STA. 415+87.00)
CARRYING F.A.S. ROUTE 2245 (IL 29)
OVER BIG BUREAU CREEK
1.0 MI. EAST OF I-180



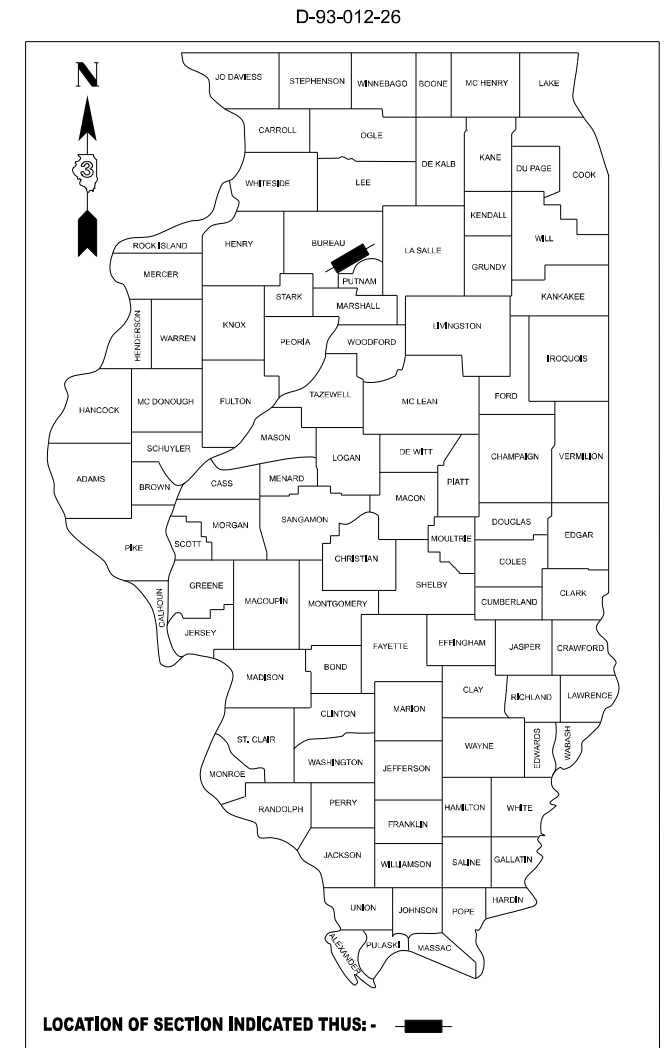
FULL SIZE PLANS HAVE BEEN PREPARED USING STANDARD ENGINEERING SCALES. REDUCED SIZED PLANS WILL NOT CONFORM TO STANDARD SCALES. IN MAKING MEASUREMENTS ON REDUCED PLANS, THE ABOVE SCALES MAY BE USED.

J.U.L.I.E.
JOINT UTILITY LOCATION INFORMATION FOR EXCAVATION
1-800-892-0123
OR 811

PROJECT ENGINEER: JUNIOR SENAT
UNIT CHIEF: RON WOODSHANK
DISTRICT NO. 3: (815) 434-6131
CONTRACT NO. 66R69



LOCATION MAP
NOT TO SCALE



FUNCTIONAL CLASSIFICATION

MAJOR COLLECTOR
F.A.S. ROUTE 2245 (IL RTE 29)
2025 ADT = 750
P.V. = 86.6% S.U. = 2.7% M.U. = 10.7%

STATE OF ILLINOIS
DEPARTMENT OF TRANSPORTATION

SUBMITTED February 5 26
20

Trisha Thompson
REGIONAL ENGINEER

March 20 26
Scott A. Etkin
ENGINEER OF DESIGN AND ENVIRONMENT

March 20 26
Gregory J. ...
DIRECTOR OF HIGHWAYS PROJECT IMPLEMENTATION

**PRINTED BY THE AUTHORITY
OF THE STATE OF ILLINOIS**

E LIN ENGINEERING, LTD.
Consulting Engineers
Westmont, Illinois

GENERAL NOTES

ALL EXCAVATED MATERIAL, WHICH INCLUDES DIGGING OR GRADING OR ANY SOIL OR FILL MATERIAL, WITH THE EXCEPTION OF AGGREGATE FILLS, MUST BE INCORPORATED WITHIN THE IDOT RIGHT OF WAY.

THE FOLLOWING RATES OF APPLICATION HAVE BEEN USED IN CALCULATING PLAN QUANTITIES:

SHORT TERM PAVEMENT MARKING	10	FT / 100 FT OF APPLICATION
-----------------------------	----	----------------------------

COMMITMENTS

THE ENGINEER SHALL RECORD THE DECK SLAB REPAIR LOCATION, PATCH SIZE AND QUANTITIES ON THE DECK SLAB REPAIR "AS BUILT" PLAN DETAILS. WHEN RECORDED, THE ENGINEER SHALL FORWARD THE DECK SLAB REPAIR "AS BUILT" PLAN DETAILS TO THE BRIDGE OFFICE IN A TIMELY MANNER. BRIDGE OFFICE CONTACT PERSON IS JEFFREY BURKE. PHONE (217) 558-0282. EMAIL: JEFFREY.BURKE@ILLINOIS.GOV. THE ENGINEER SHALL NOTIFY THE DEPARTMENTS DESIGN AND PLANNING SECTION WHEN THE "AS BUILT" DECK SLAB REPAIR PLAN HAS BEEN SENT TO THE BRIDGE OFFICE. CONTACT PERSON IS JUNIOR SENAT. PHONE (815) 434-8449. EMAIL: JUNIOR.SENAT@ILLINOIS.GOV

STATE OF ILLINOIS
DEPARTMENT OF TRANSPORTATION
DISTRICT THREE
AS-BUILT INFORMATION

SUPERVISING CONSTRUCTION FIELD ENGINEER

RESIDENT ENGINEER / TECHNICIAN

START & END DATES
OF CONSTRUCTION: _____

INSPECTORS: _____

MODEL: General Notes (Sheet)
FILE NAME: E:\2426\CADD_Sheets\36669-shr-index.dgn



USER NAME = cbarh	DESIGNED - NH	REVISED -
	DRAWN - CB	REVISED -
PLOT SCALE = 0.16666633' / in.	CHECKED - RC	REVISED -
PLOT DATE = 1/13/2026	DATE - 1/2026	REVISED -

STATE OF ILLINOIS
DEPARTMENT OF TRANSPORTATION

IL 29 OVER BIG BUREAU CREEK
GENERAL NOTES

SCALE: N.T.S. SHEET 1 OF 1 SHEETS STA. TO STA.

F.A.S. RTE.	SECTION	COUNTY	TOTAL SHEETS	SHEET NO.
2245	(22B)BRR	BUREAU	26	2
CONTRACT NO. 66R69				
ILLINOIS			FED. AID PROJECT	

CODE NO.	ITEM	UNIT	TOTAL QUANTITY	CONSTRUCTION CODE	
				CONTRACT MAINTENANCE 100% STATE	
				SN 006-0084	
				0047 BRIDGE	
28100107	STONE RIPRAP, CLASS A4	SQ YD	480	480	
28200200	FILTER FABRIC	SQ YD	480	480	
50102400	CONCRETE REMOVAL	CU YD	20	20	
50104650	SLOPE WALL REMOVAL	SQ YD	480	480	
50300255	CONCRETE SUPERSTRUCTURE	CU YD	20.0	20.0	
50300300	PROTECTIVE COAT	SQ YD	50	50	
50800205	REINFORCEMENT BARS, EPOXY COATED	POUND	2930	2930	
50800515	BAR SPLICERS	EACH	30	30	
52000110	PREFORMED JOINT STRIP SEAL	FOOT	104	104	
59000200	EPOXY CRACK INJECTION	FOOT	120	120	
67100100	MOBILIZATION	L SUM	1	1	
70100405	TRAFFIC CONTROL AND PROTECTION, STANDARD 701321	EACH	1	1	
70100450	TRAFFIC CONTROL AND PROTECTION, STANDARD 701201	L SUM	1	1	
70106500	TEMPORARY BRIDGE TRAFFIC SIGNALS	EACH	1	1	

* SPECIALTY ITEM

MODEL: Summary of Quantities (Sheet)
FILE NAME: E:\2422-3\CADD_Sheet\3666669-sh1-SOO.dgn



USER NAME = 14rno	DESIGNED - NH	REVISED -
	DRAWN - NH	REVISED -
PLOT SCALE = 0.16666667 / in.	CHECKED - RC	REVISED -
PLOT DATE = 12/2/2025	DATE - 1/2026	REVISED -

STATE OF ILLINOIS
DEPARTMENT OF TRANSPORTATION

IL 29 OVER BIG BUREAU CREEK
SUMMARY OF QUANTITIES

SCALE: N.T.S. SHEET 1 OF 3 SHEETS STA. TO STA.

F.A.S. RTE.	SECTION	COUNTY	TOTAL SHEETS	SHEET NO.
2245	(22B)BRR	BUREAU	26	3
CONTRACT NO. 66R69			ILLINOIS FED. AID PROJECT	

CODE NO.	ITEM	UNIT	TOTAL QUANTITY	CONSTRUCTION CODE	
				CONTRACT MAINTENANCE 100% STATE	
				SN 006-0084	
				0047	BRIDGE
70106700	TEMPORARY RUMBLE STRIPS	EACH	6	6	
70300100	SHORT TERM PAVEMENT MARKING	FOOT	271	271	
70300150	SHORT TERM PAVEMENT MARKING REMOVAL	SQ FT	91	91	
70400100	TEMPORARY CONCRETE BARRIER	FOOT	500.0	500.0	
70400200	RELOCATE TEMPORARY CONCRETE BARRIER	FOOT	462.5	462.5	
70600251	IMPACT ATTENUATORS, TEMPORARY (NON-REDIRECTIVE, NARROW) TEST LEVEL 3	EACH	2	2	
70600352	IMPACT ATTENUATORS, RELOCATE (NON-REDIRECTIVE, NARROW) TEST LEVEL 3	EACH	2	2	
* 78009004	MODIFIED URETHANE PAVEMENT MARKING - LINE 4"	FOOT	4,393	4,393	
* 78009006	MODIFIED URETHANE PAVEMENT MARKING - LINE 6"	FOOT	140	140	
* 78009012	MODIFIED URETHANE PAVEMENT MARKING - LINE 12"	FOOT	306	306	
* 78100300	REPLACEMENT REFLECTOR	EACH	32	32	
* 78200005	GUARDRAIL REFLECTORS, TYPE A	EACH	21	21	
* 78200011	BARRIER WALL REFLECTORS, TYPE C	EACH	20	20	
78300202	PAVEMENT MARKING REMOVAL WATER BLASTING	SQ FT	1,837	1,837	

* SPECIALTY ITEM

MODEL: SOC-2 [Sheet]
FILE NAME: E:\2422-3\CADD_Sheets\366R69-sh1-SOC.dgn



USER NAME = 14nho	DESIGNED - NH	REVISED -
	DRAWN - NH	REVISED -
PLOT SCALE = 0.1666667 / in.	CHECKED - RC	REVISED -
PLOT DATE = 12/2/2025	DATE = 1/2026	REVISED -

**STATE OF ILLINOIS
DEPARTMENT OF TRANSPORTATION**

**IL 29 OVER BIG BUREAU CREEK
SUMMARY OF QUANTITIES**

SCALE: N.T.S. SHEET 2 OF 3 SHEETS STA. TO STA.

F.A.S. RTE.	SECTION	COUNTY	TOTAL SHEETS	SHEET NO.
2245	(22B)BRR	BUREAU	26	4
CONTRACT NO. 66R69			ILLINOIS FED. AID PROJECT	

TEMPORARY CONCRETE BARRIER

STAGE	FROM STATION	TO STATION	LT/RT	FOOT
1	413+37.00	418+37.00	LT/RT	500.00
ROUNDED TOTAL				500.0

RELOCATE TEMPORARY CONCRETE BARRIER

STAGE	FROM STATION	TO STATION	LT/RT	FOOT
2	413+51.00	418+13.00	LT/RT	462.50
ROUNDED TOTAL				462.5

IMPACT ATTENUATORS, TEMPORARY
(NON-REDIRECTIVE, NARROW) TEST LEVEL 3

STAGE	STATION	LT/RT	EACH
1	413+37.00	LT	1
1	418+37.00	LT	1
TOTAL			2

IMPACT ATTENUATORS, RELOCATE
(NON-REDIRECTIVE, NARROW) TEST LEVEL 3

STAGE	STATION	LT/RT	EACH
2	413+51.00	RT	1
2	418+13.00	RT	1
TOTAL			2

BARRIER WALL REFLECTORS, TYPE C

STAGE	FROM STATION	TO STATION	LT/RT	EACH
1	414+49.51	416+86.61	RT	10
2	414+79.74	417+21.22	LT	10
TOTAL				20

GUARDRAIL REFLECTORS, TYPE A

STAGE	FROM STATION	TO STATION	LT/RT	EACH
1	412+62.46	414+52.01	RT	5
1	416+84.11	421+41.39	RT	5
2	413+03.58	414+82.26	LT	5
2	417+18.74	419+19.60	LT	6
TOTAL				21

LINEAR DELINEATOR PANELS, 6 INCH

STAGE	FROM STATION	TO STATION	LT/RT	EACH
1	414+49.51	416+86.61	RT	3
2	414+79.74	417+21.22	LT	4
TOTAL				7

LINEAR DELINEATOR PANELS, 4 INCH

STAGE	FROM STATION	TO STATION	LT/RT	EACH
1	412+62.46	414+52.01	RT	2
1	416+84.11	421+41.39	RT	5
2	413+03.58	414+82.26	LT	2
2	417+18.74	419+19.60	LT	2
TOTAL				11

MODEL: Schedule of Quantities (Sheet)
FILE NAME: E:\2422-CADD_Sheets\366R69-shr-schedules.dgn



USER NAME = cbarh	DESIGNED - NH	REVISED -
	DRAWN - CB	REVISED -
PLOT SCALE = 0.16666633' / in.	CHECKED - RC	REVISED -
PLOT DATE = 1/12/2026	DATE - 1/2026	REVISED -

**STATE OF ILLINOIS
DEPARTMENT OF TRANSPORTATION**

**IL 29 OVER BIG BUREAU CREEK
SCHEDULE OF QUANTITIES**

SCALE: N.T.S. SHEET 1 OF 2 SHEETS STA. TO STA.

F.A.S. RTE.	SECTION	COUNTY	TOTAL SHEETS	SHEET NO.
2245	(22B)BRR	BUREAU	26	6
ILLINOIS			FED. AID PROJECT	

CONTRACT NO. 66R69

PAVEMENT MARKING REMOVAL - WATER BLASTING

FROM STATION	TO STATION	LT/RT	WIDTH	AREA (SQ FT)
411+62.14	416+95.83	LT/RT	4.00	177.90
411+62.14	421+24.23	RT	4.00	320.70
411+62.14	416+95.83	LT/RT	6.00	66.71
412+74.83	421+24.25	LT	4.00	300.60
416+95.83	422+12.84	LT/RT	4.00	334.15
416+95.83	422+12.84	RT	4.00	330.90
416+95.83	422+12.84	LT/RT	12.00	305.69
ROUNDED TOTAL				1,837

MODIFIED URETHANE PAVEMENT MARKING - LINE 4"

FROM STATION	TO STATION	LT/RT	FOOT
411+62.14	416+95.83	LT/RT	533.69
411+62.14	421+24.23	RT	962.09
412+74.83	421+24.25	LT	901.81
416+95.83	422+12.84	LT/RT	1002.46
416+95.83	422+12.84	RT	992.70
ROUNDED TOTAL			4,393

RAISED REFLECTIVE PAVEMENT MARKER, REFLECTOR REMOVAL

FROM STATION	TO STATION	LT/RT	EACH
411+62.14	416+95.83	LT/RT	7
416+95.83	422+12.84	LT/RT	13
416+95.83	422+12.84	RT	12
TOTAL			32

MODIFIED URETHANE PAVEMENT MARKING - LINE 6"

FROM STATION	TO STATION	LT/RT	FOOT
411+62.14	416+95.83	LT/RT	133.42
ROUNDED TOTAL			140

REPLACEMENT REFLECTOR

FROM STATION	TO STATION	LT/RT	EACH
411+62.14	416+95.83	LT/RT	7
416+95.83	422+12.84	LT/RT	13
416+95.83	422+12.84	RT	12
TOTAL			32

MODIFIED URETHANE PAVEMENT MARKING - LINE 12"

FROM STATION	TO STATION	LT/RT	FOOT
416+95.83	422+12.84	LT/RT	305.69
ROUNDED TOTAL			306

MODEL: Schedule of Quantities-1 (Sheet)
FILE NAME: E:\2422-6\CADD_Sheets\0366669-shr-schedules.dgn



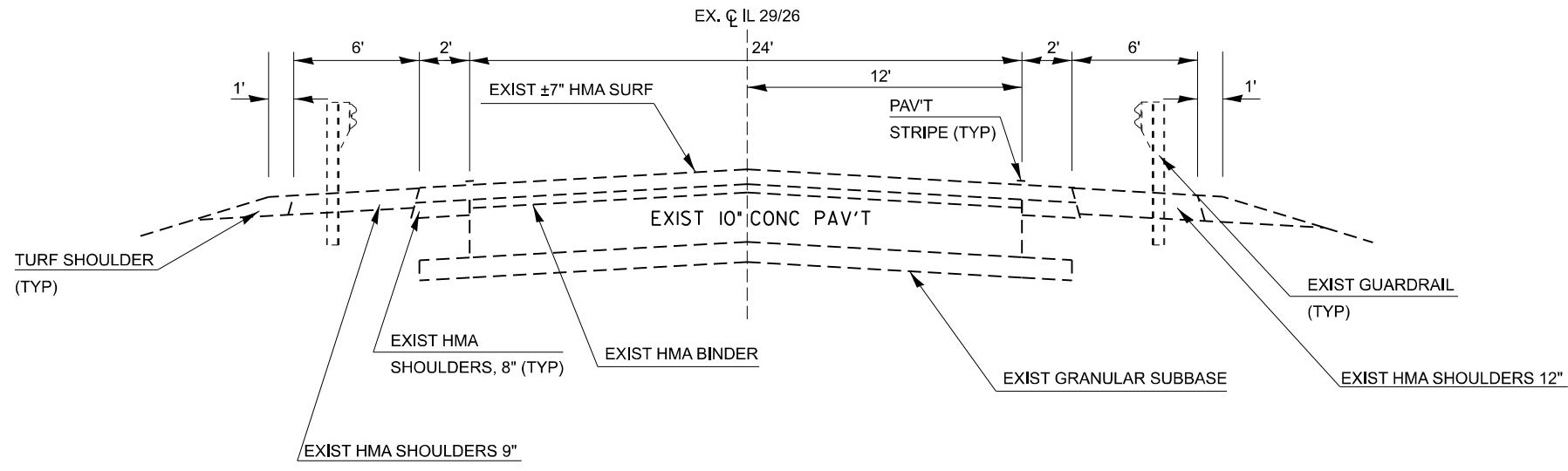
USER NAME = cbarh	DESIGNED - NH	REVISED -
	DRAWN - CB	REVISED -
PLOT SCALE = 0.16666633' / in.	CHECKED - RC	REVISED -
PLOT DATE = 1/12/2026	DATE - 1/2026	REVISED -

STATE OF ILLINOIS
DEPARTMENT OF TRANSPORTATION

IL 29 OVER BIG BUREAU CREEK
SCHEDULE OF QUANTITIES

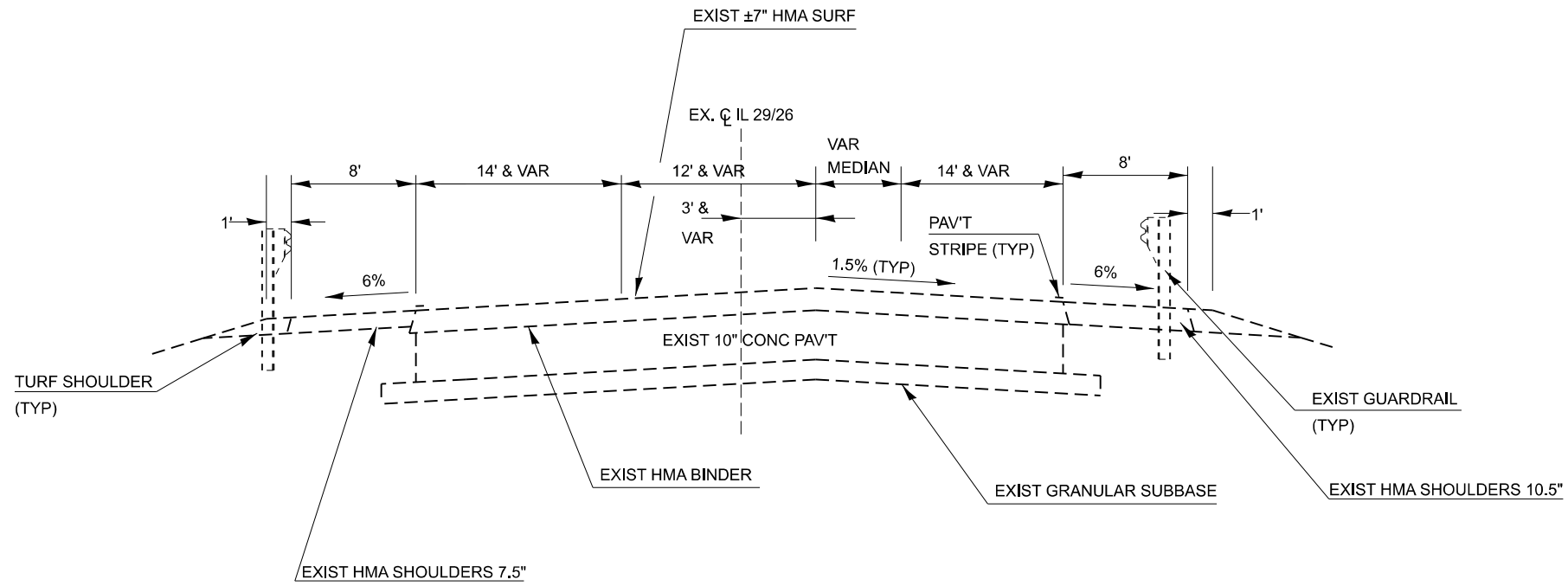
SCALE: N.T.S. SHEET 2 OF 2 SHEETS STA. TO STA.

F.A.S. RTE.	SECTION	COUNTY	TOTAL SHEETS	SHEET NO.
2245	(22B)BRR	BUREAU	26	7
CONTRACT NO. 66R69				
ILLINOIS FED. AID PROJECT				



IL-29/26 TYPICAL SECTION 1
 STA. 401+43.54 TO STA. 414+52.36

BRIDGE OMISSION
 STA. 414+52.36 TO STA. 417+28.43



IL-29/26 TYPICAL SECTION 2
 STA. 417+28.43 TO STA. 430+07.69

MODEL: ### FILE NAME: E:\2422-S\CADD_Sheets\366R69-sh-TYPICAL_SECTION (from IDOT).dgn

USER NAME = 14nho	DESIGNED - RW	REVISED -
	DRAWN - RW	REVISED -
	CHECKED - YP	REVISED -
PLOT DATE = 1/20/2026	DATE - 10/20/2025	REVISED -

STATE OF ILLINOIS
 DEPARTMENT OF TRANSPORTATION

IL 29 OVER BIG BUREAU CREEK
 TYPICAL SECTIONS

SCALE: SHEET 1 OF 1 SHEETS STA. TO STA.

F.A.S. RTE. 2245	SECTION (22B)BRR	COUNTY BUREAU	TOTAL SHEETS 26	SHEET NO. 8
CONTRACT NO. 66R69				
ILLINOIS FED. AID PROJECT				

MAINTENANCE OF TRAFFIC GENERAL NOTES

1. MAINTENANCE OF TRAFFIC PLANS SHALL SERVE AS A GUIDE FOR THE SAFE DIVERSION OF TRAFFIC DURING THE EXECUTION OF THIS CONTRACT. THE CONTRACTOR MAY MODIFY THE MAINTENANCE OF TRAFFIC PLANS TO MEET CONSTRUCTION NEEDS BUT NOT AT THE EXPENSE OF PUBLIC SAFETY OR CONVENIENCE. ANY CHANGES TO THE TRAFFIC CONTROL PLANS SHALL BE SUBMITTED TO THE ENGINEER FOR APPROVAL.
2. TEMPORARY PAVEMENT MARKING TAPE, TYPE IV SHALL BE USED FOR ANY SHORT TERM PAVEMENT MARKINGS ON FINAL SURFACES.
3. ALL TRAFFIC CONTROL DEVICES SHALL BE REFLECTORIZED PRIOR TO INSTALLATION AND CLEANED AS SPECIFIED IN THE TRAFFIC CONTROL SPECIAL PROVISIONS OR AS DIRECTED BY THE ENGINEER.
4. SEE STRUCTURAL PLANS FOR BRIDGE REPAIR INFORMATION.
5. ALL EXISTING AND TEMPORARY PAVEMENT MARKINGS FROM PRIOR STAGES THAT ARE IN CONFLICT SHALL BE REMOVED.
6. EXISTING RAISED REFLECTIVE PAVEMENT MARKER REFLECTORS THAT CONFLICT WITH THE REVISED TRAFFIC PATTERNS, SHALL BE REMOVED FROM THE EXISTING CASINGS LOCATED IN THE PAVEMENT. THIS WORK WILL BE PAID FOR AT THE CONTRACT UNIT PRICE PER EACH FOR RAISED REFLECTIVE PAVEMENT MARKER, REFLECTOR REMOVAL.
7. EXISTING SIGNS WITHIN THE LIMITS OF TRAFFIC CONTROL WHICH ARE OBSTRUCTED BY OR OTHERWISE INTERFERED WITH BY CONSTRUCTION OPERATIONS OF DESIGNATED TRAFFIC CONTROL, SHALL BE COVERED OR REMOVED BY THE CONTRACTOR UNLESS SPECIFIED IN THE PLANS OR WHEN DIRECTED BY THE ENGINEER. THIS WORK SHALL BE AS SPECIFIED IN ARTICLE 107.25 OF THE STANDARD SPECIFICATIONS.
8. THE "NO TURN ON RED" SIGNS DESCRIBED IN THE "TEMPORARY BRIDGE TRAFFIC SIGNALS (STANDARD 7016016 OR STANDARD 701321)" SPECIAL PROVISIONS WILL NOT BE REQUIRED AT THE IL 29 AND TISKILWA ROAD INTERSECTION.

SUGGESTED SEQUENCE OF OPERATIONS

STAGE 1

1. INSTALL TEMPORARY TRAFFIC CONTROL DEVICES, SIGNALS, TEMPORARY SIGNAGE, TEMPORARY CONCRETE BARRIER WALL AND DELINEATION, TEMPORARY IMPACT ATTENUATORS & PLACE TEMPORARY PAVEMENT MARKINGS TO CLOSE THE SB LANE OF IL 29 AS SHOWN IN THE STAGE 1 STAGING PLANS OR AS DIRECTED BY THE ENGINEER AND ACTIVATE TEMPORARY BRIDGE SIGNALS.

2. PERFORM THE STAGE 1 PORTION OF THE STRUCTURE REPAIRS AS SHOWN ON THE STRUCTURE PLANS.

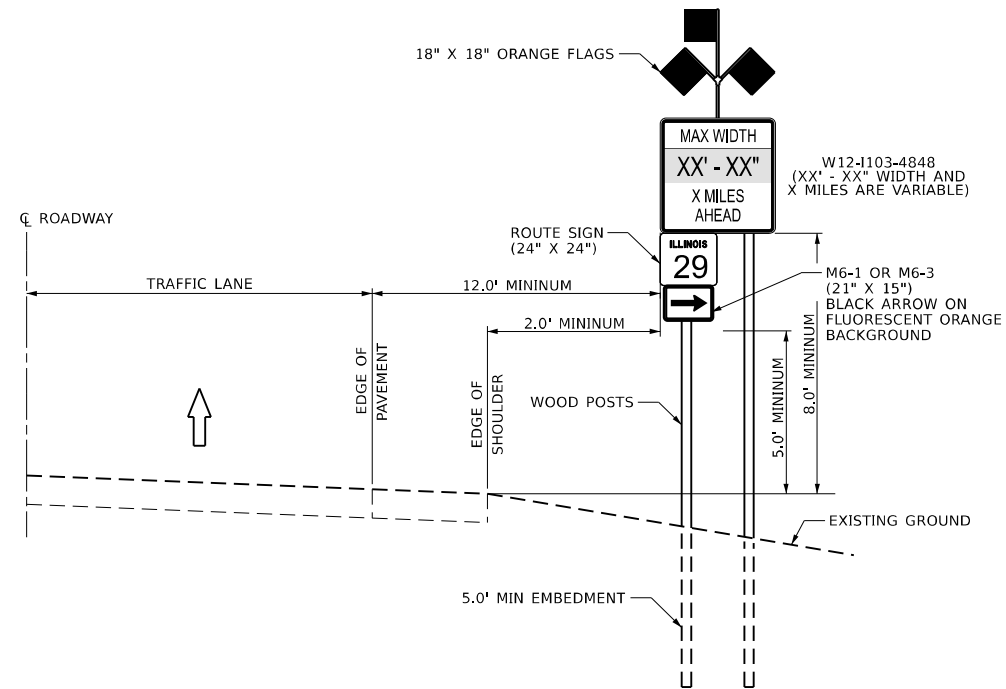
STAGE 2

1. RELOCATE TEMPORARY CONCRETE BARRIER WALL, & TEMPORARY IMPACT ATTENUATORS & PLACE TEMPORARY PAVEMENT MARKINGS TO CLOSE THE NB LANE OF IL 29 AS SHOWN IN THE STAGE 2 STAGING PLANS OR AS DIRECTED BY THE ENGINEER AND ACTIVATE TEMPORARY BRIDGE SIGNALS.

2. PERFORM THE STAGE 2 PORTION OF THE STRUCTURE REPAIRS AS SHOWN ON THE STRUCTURE PLANS.

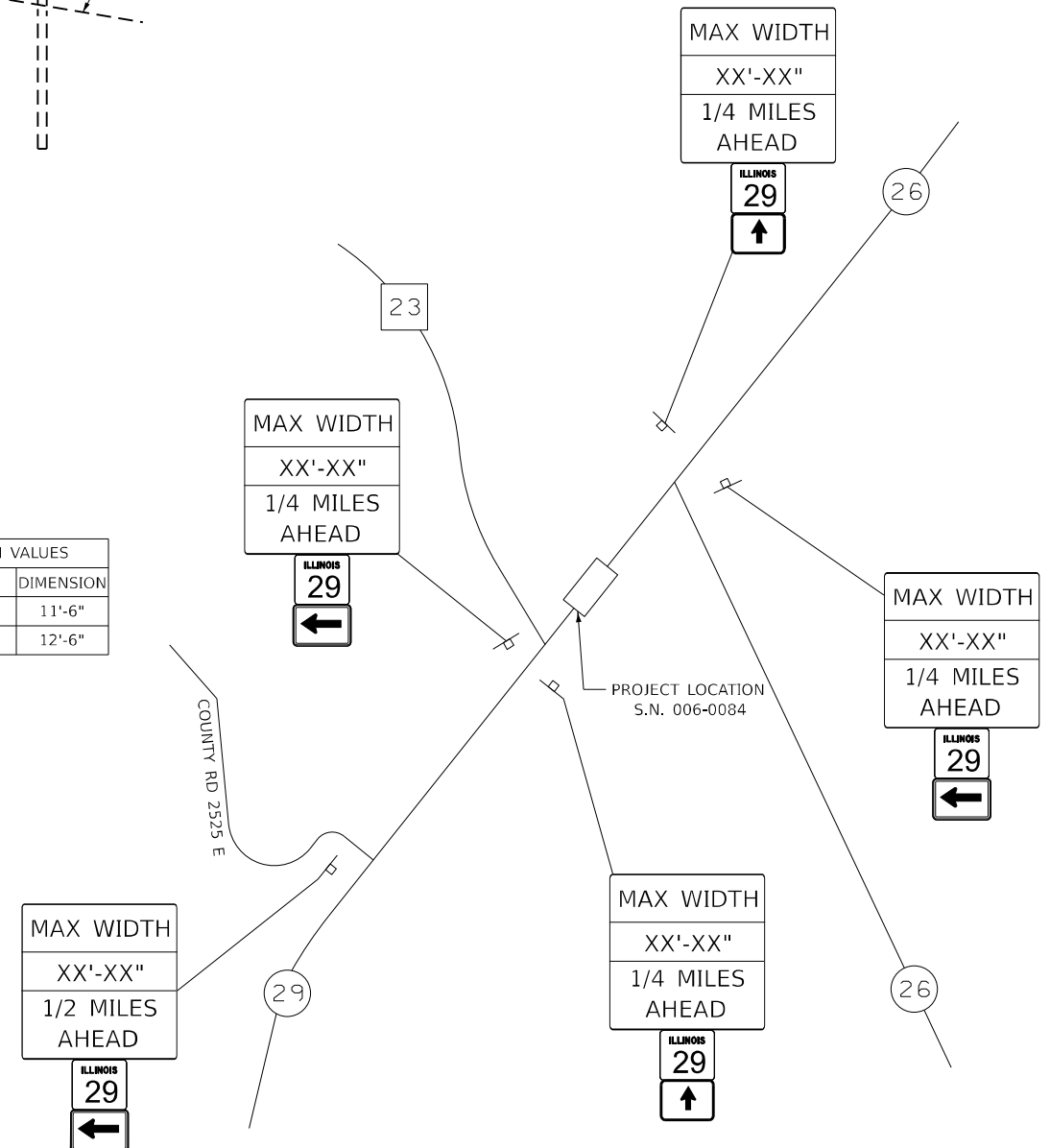
POST-STAGE

1. UTILIZE HIGHWAY STANDARDS 701301 & 701311 TO PLACE FINAL PAVEMENT MARKINGS.



**WIDTH RESTRICTION SIGN
CONVENTIONAL ROADWAYS**

SIGN VALUES	
STAGE	DIMENSION
1	11'-6"
2	12'-6"



WIDTH RESTRICTION SIGNING DETAIL

MODEL: Staging Notes (Sheet)
FILE NAME: E:\24226\CADD_Sheets\366R69-shr-staging-notes.dgn



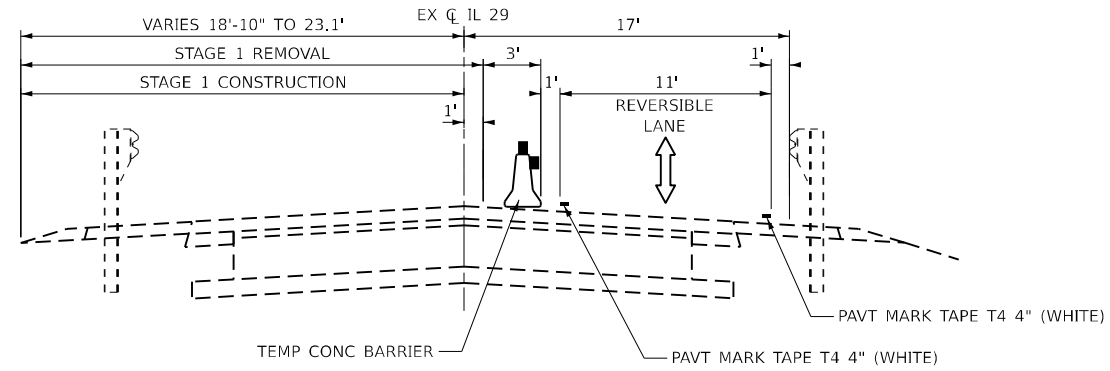
USER NAME = 14nho	DESIGNED - NH	REVISED -
	DRAWN - NH	REVISED -
PLOT SCALE = 0.16666833' / in.	CHECKED - RC	REVISED -
PLOT DATE = 12/2/2025	DATE - 1/2026	REVISED -

**STATE OF ILLINOIS
DEPARTMENT OF TRANSPORTATION**

**IL 29 OVER BIG BUREAU CREEK
STAGING GENERAL NOTES & SUGGESTED SEQUENCE**

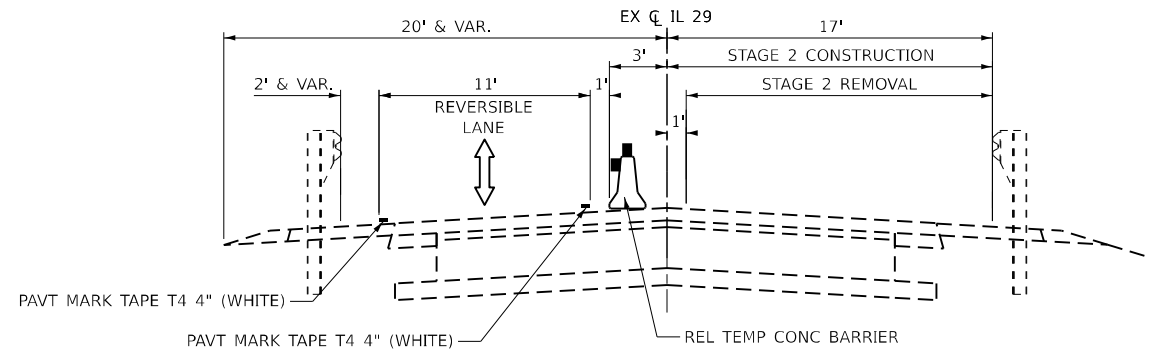
SCALE: N.T.S. SHEET 1 OF 4 SHEETS STA. TO STA.

F.A.S. RTE. 2245	SECTION (22B)BRR	COUNTY BUREAU	TOTAL SHEETS 26	SHEET NO. 9
CONTRACT NO. 66R69				
ILLINOIS FED. AID PROJECT				



STAGE 1 TYPICAL SECTION

IL RTE 29 OVER BIG BUREAU CREEK
LOOKING NORTH



STAGE 2 TYPICAL SECTION

IL RTE 29 OVER BIG BUREAU CREEK
LOOKING NORTH

MODEL: Staging Typical (Sheet)
FILE NAME: E:\24226\CADD_Sheets\366669-shr-stagingtyp.dgn



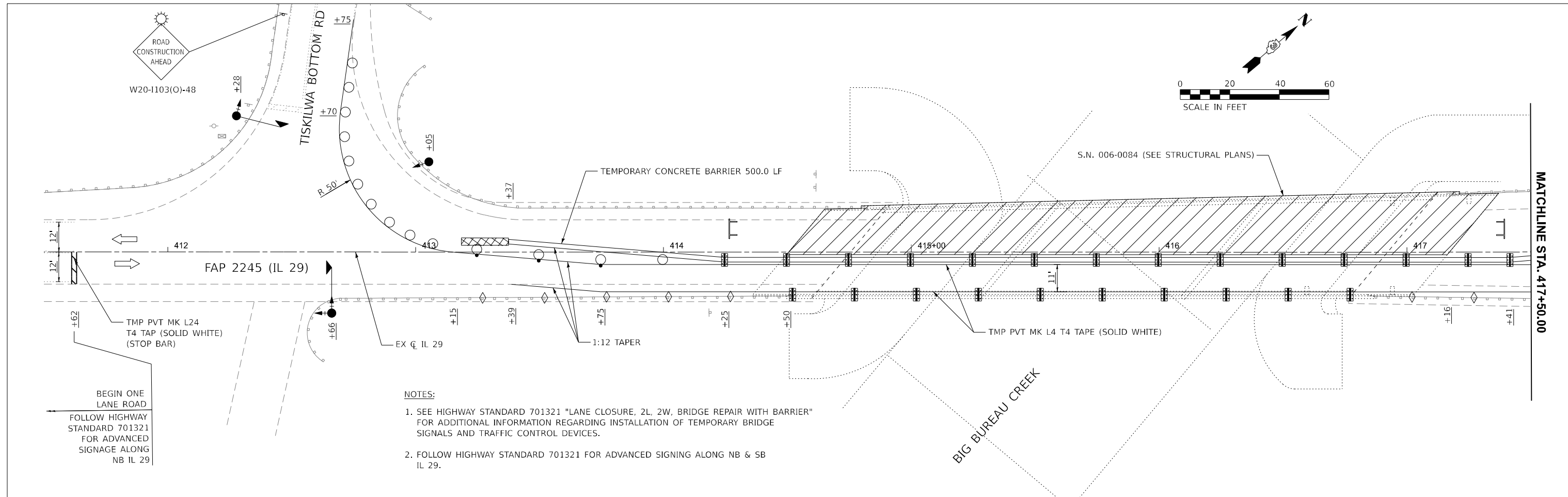
USER NAME = 14nho	DESIGNED - NH	REVISED -
	DRAWN - CB	REVISED -
PLOT SCALE = 0.16666833' / in.	CHECKED - RC	REVISED -
PLOT DATE = 1/29/2026	DATE - 1/2026	REVISED -

**STATE OF ILLINOIS
DEPARTMENT OF TRANSPORTATION**

**IL 29 OVER BIG BUREAU CREEK
STAGING TYPICAL SECTIONS**

SCALE: N.T.S. SHEET 2 OF 4 SHEETS STA. TO STA.

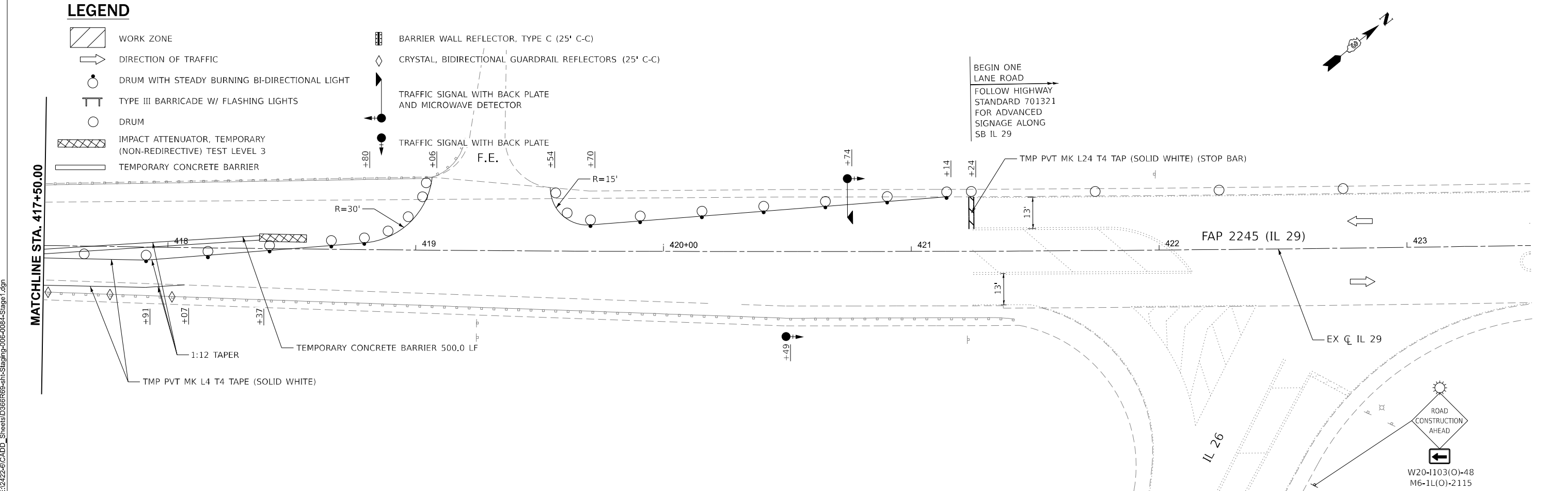
F.A.S. RTE.	SECTION	COUNTY	TOTAL SHEETS	SHEET NO.
2245	(22B)BRR	BUREAU	26	10
CONTRACT NO. 66R69				
ILLINOIS FED. AID PROJECT				



- NOTES:**
- SEE HIGHWAY STANDARD 701321 "LANE CLOSURE, 2L, 2W, BRIDGE REPAIR WITH BARRIER" FOR ADDITIONAL INFORMATION REGARDING INSTALLATION OF TEMPORARY BRIDGE SIGNALS AND TRAFFIC CONTROL DEVICES.
 - FOLLOW HIGHWAY STANDARD 701321 FOR ADVANCED SIGNAGE ALONG NB & SB IL 29.

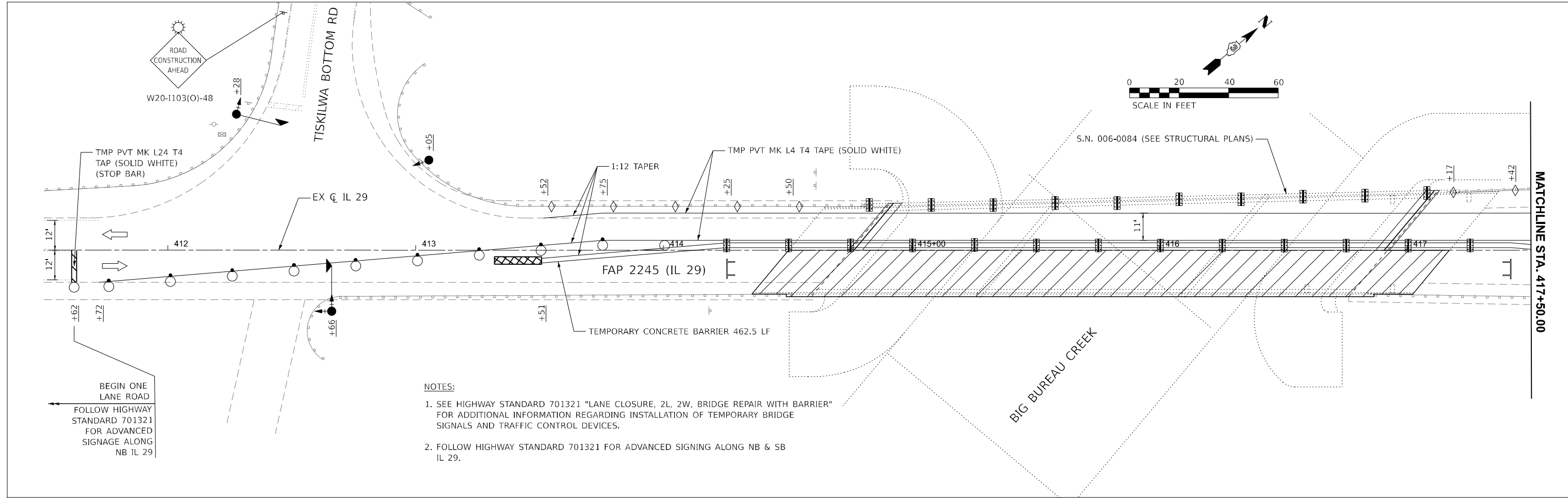
LEGEND

- WORK ZONE
- DIRECTION OF TRAFFIC
- DRUM WITH STEADY BURNING BI-DIRECTIONAL LIGHT
- TYPE III BARRICADE W/ FLASHING LIGHTS
- DRUM
- IMPACT ATTENUATOR, TEMPORARY (NON-REDIRECTIVE) TEST LEVEL 3
- TEMPORARY CONCRETE BARRIER
- BARRIER WALL REFLECTOR, TYPE C (25' C-C)
- CRYSTAL, BIDIRECTIONAL GUARDRAIL REFLECTORS (25' C-C)
- TRAFFIC SIGNAL WITH BACK PLATE AND MICROWAVE DETECTOR
- TRAFFIC SIGNAL WITH BACK PLATE

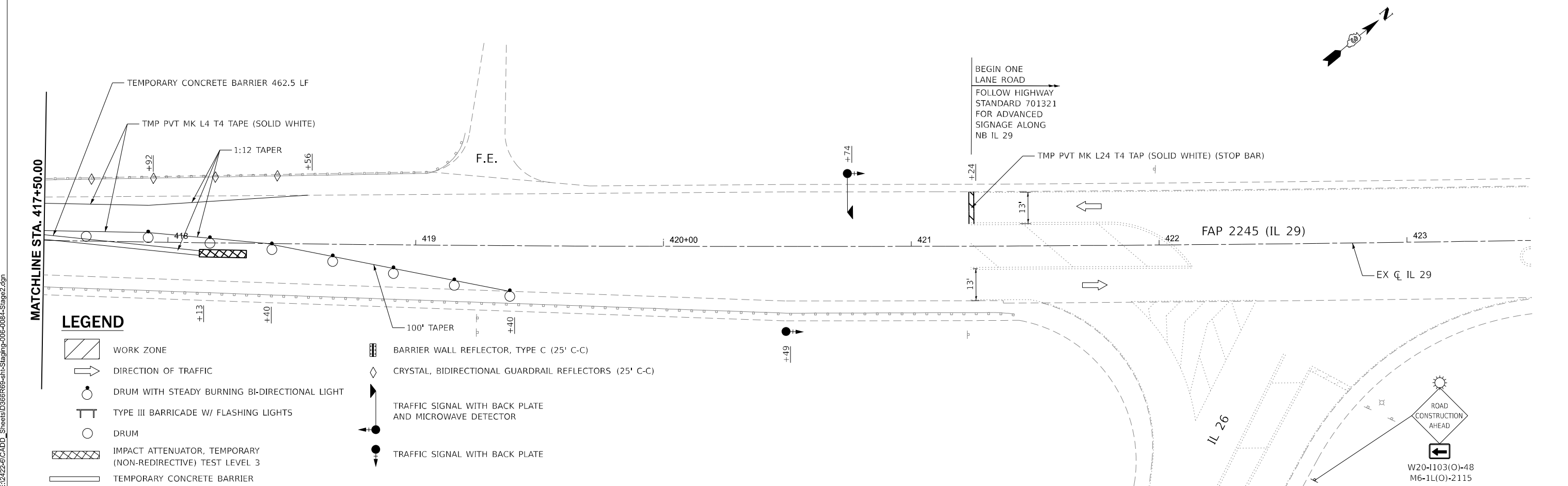


MODEL: EXCL IL29 - Plan 1 (Sheet)
 FILE NAME: E:\2422-CAD-CADD_Sheets\366669-sh-Staging-006-0084-Stage1.dgn

LIN ENGINEERING, LTD. Consulting Engineers Westmont, Illinois	USER NAME = 14nho	DESIGNED - NH	REVISED -	STATE OF ILLINOIS DEPARTMENT OF TRANSPORTATION	IL 29 OVER BIG BUREAU CREEK STAGING PLAN - STAGE I	F.A.S. RTE. 2245	SECTION (22B)BRR	COUNTY BUREAU	TOTAL SHEETS 26	SHEET NO. 11
	PLOT SCALE = 0.16666833" / in.	CHECKED - RC	REVISIED -			SCALE: 1"=20'	SHEET 3 OF 4 SHEETS	STA. 411+62.14 TO STA. 421+24.25	CONTRACT NO. 66R69	
	PLOT DATE = 1/29/2026	DATE = 1/2026	REVISIED -							



- NOTES:**
1. SEE HIGHWAY STANDARD 701321 "LANE CLOSURE, 2L, 2W, BRIDGE REPAIR WITH BARRIER" FOR ADDITIONAL INFORMATION REGARDING INSTALLATION OF TEMPORARY BRIDGE SIGNALS AND TRAFFIC CONTROL DEVICES.
 2. FOLLOW HIGHWAY STANDARD 701321 FOR ADVANCED SIGNAGE ALONG NB & SB IL 29.



LEGEND

- WORK ZONE
- DIRECTION OF TRAFFIC
- DRUM WITH STEADY BURNING BI-DIRECTIONAL LIGHT
- TYPE III BARRICADE W/ FLASHING LIGHTS
- DRUM
- IMPACT ATTENUATOR, TEMPORARY (NON-REDIRECTIVE) TEST LEVEL 3
- TEMPORARY CONCRETE BARRIER
- BARRIER WALL REFLECTOR, TYPE C (25' C-C)
- CRYSTAL, BIDIRECTIONAL GUARDRAIL REFLECTORS (25' C-C)
- TRAFFIC SIGNAL WITH BACK PLATE AND MICROWAVE DETECTOR
- TRAFFIC SIGNAL WITH BACK PLATE

MODEL: EXCL IL29 - Plan 1 (Sheet)
 FILE NAME: E:\2422-CADD_Sheets\366669-sh-Staging-006-0084-Stage2.dgn

LIN ENGINEERING, LTD.
 Consulting Engineers
 Westmont, Illinois

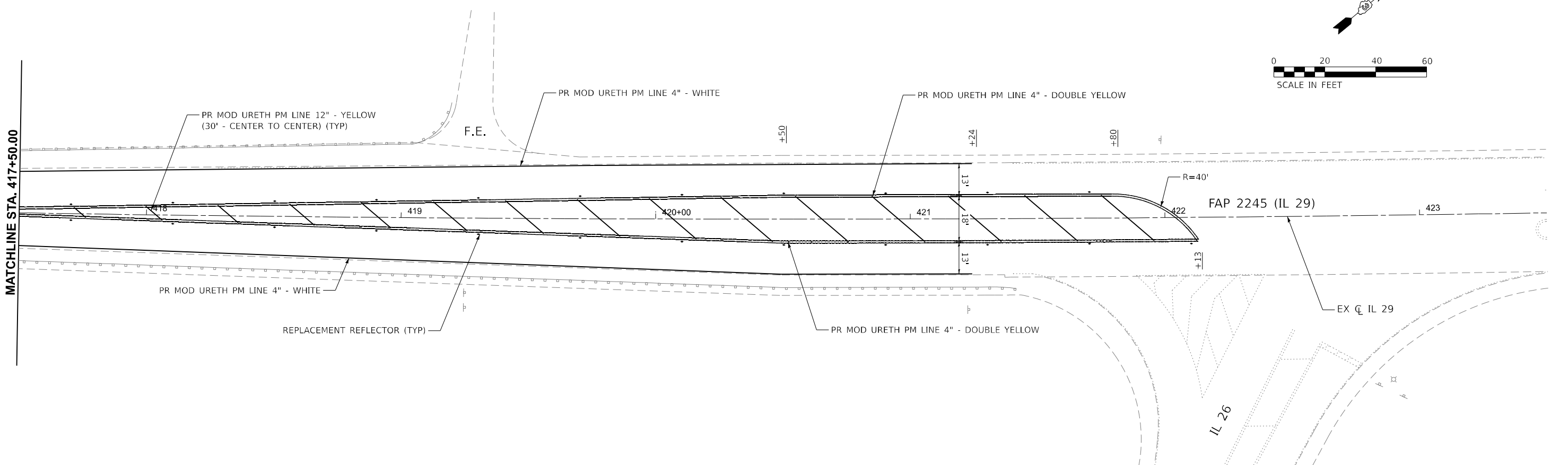
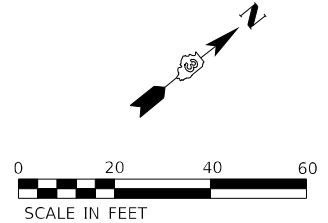
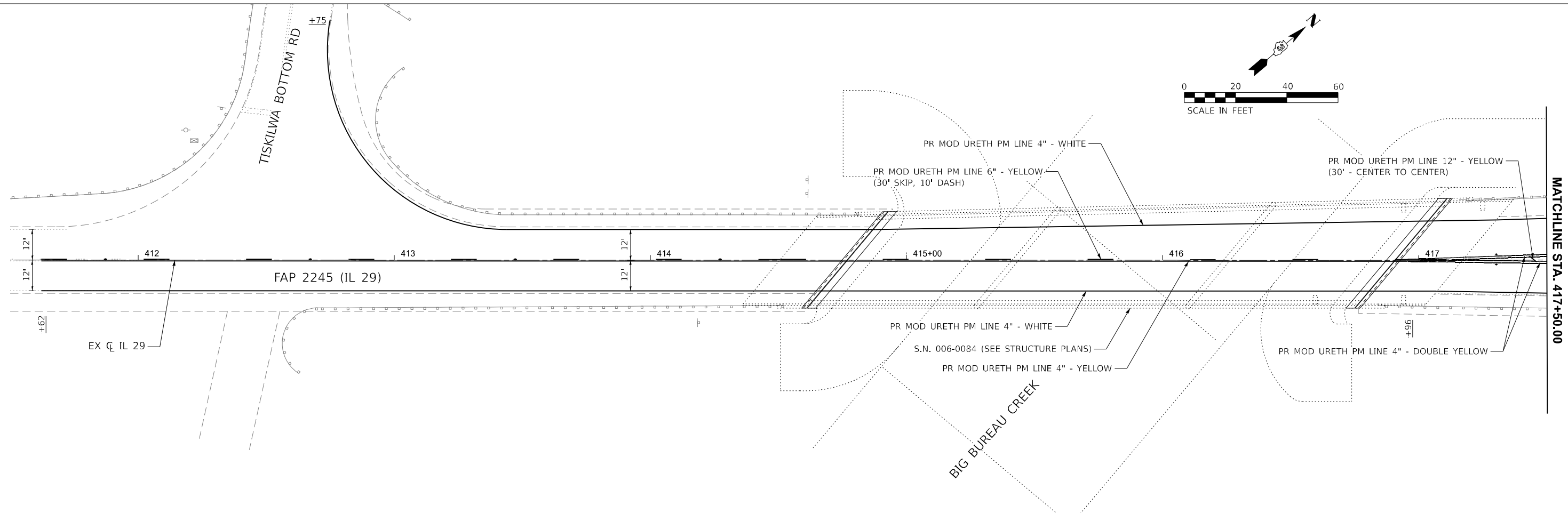
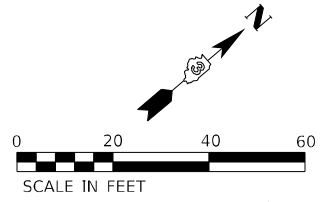
USER NAME = cbarh	DESIGNED - NH	REVISED -
PLOT SCALE = 0.16666833' / in.	DRAWN - NH	REVISED -
PLOT DATE = 1/14/2026	CHECKED - RC	REVISED -
	DATE - 1/2026	REVISED -

**STATE OF ILLINOIS
 DEPARTMENT OF TRANSPORTATION**

**IL 29 OVER BIG BUREAU CREEK
 STAGING PLAN - STAGE II**

SCALE: 1"=20' SHEET 4 OF 4 SHEETS STA. 411+62.14 TO STA. 421+24.25

F.A.S. RTE. 2245	SECTION (22B)BRR	COUNTY BUREAU	TOTAL SHEETS 26	SHEET NO. 12
CONTRACT NO. 66R69			ILLINOIS FED. AID PROJECT	



MODEL: EXCL IL29 - Plan 1 (Sheet)
 FILE NAME: E:\2422-6\CADD_Sheets\36669-shr-plan.dgn

Lin Engineering, Ltd.
 Consulting Engineers
 Westmont, Illinois

USER NAME = cbarh	DESIGNED - NH	REVISED -
DRAWN - NH	REVISIONS -	
PLOT SCALE = 0.16666833" / in.	CHECKED - RC	REVISED -
PLOT DATE = 1/14/2026	DATE - 1/2026	REVISED -

STATE OF ILLINOIS
DEPARTMENT OF TRANSPORTATION

IL 29 OVER BIG BUREAU CREEK
PAVEMENT MARKING PLAN

SCALE: 1"=20' SHEET 1 OF 1 SHEETS STA. 411+62.14 TO STA. 422+12.84

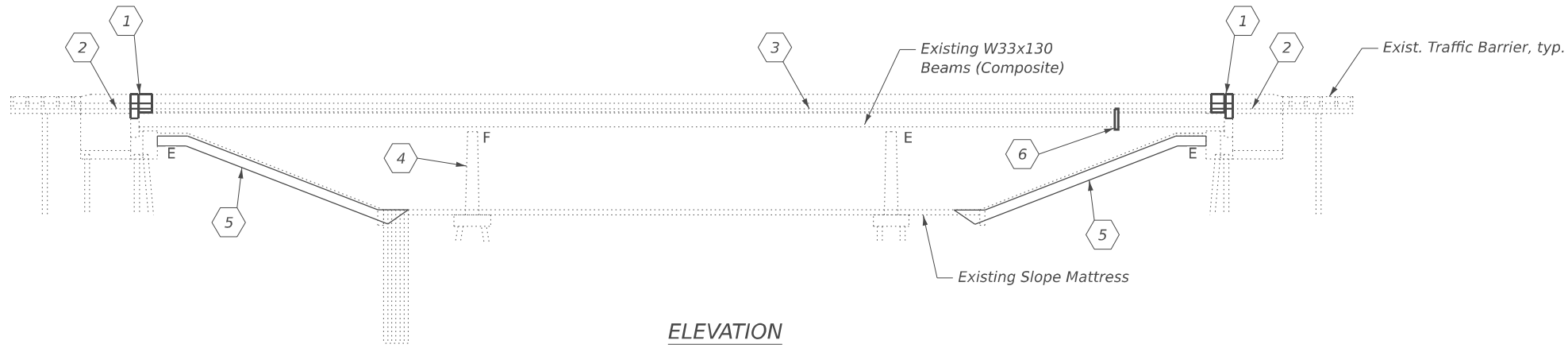
F.A.S. RTE.	SECTION	COUNTY	TOTAL SHEETS	SHEET NO.
2245	(22B)BRR	BUREAU	26	13
CONTRACT NO. 66R69				
ILLINOIS FED. AID PROJECT				

Existing Structure:

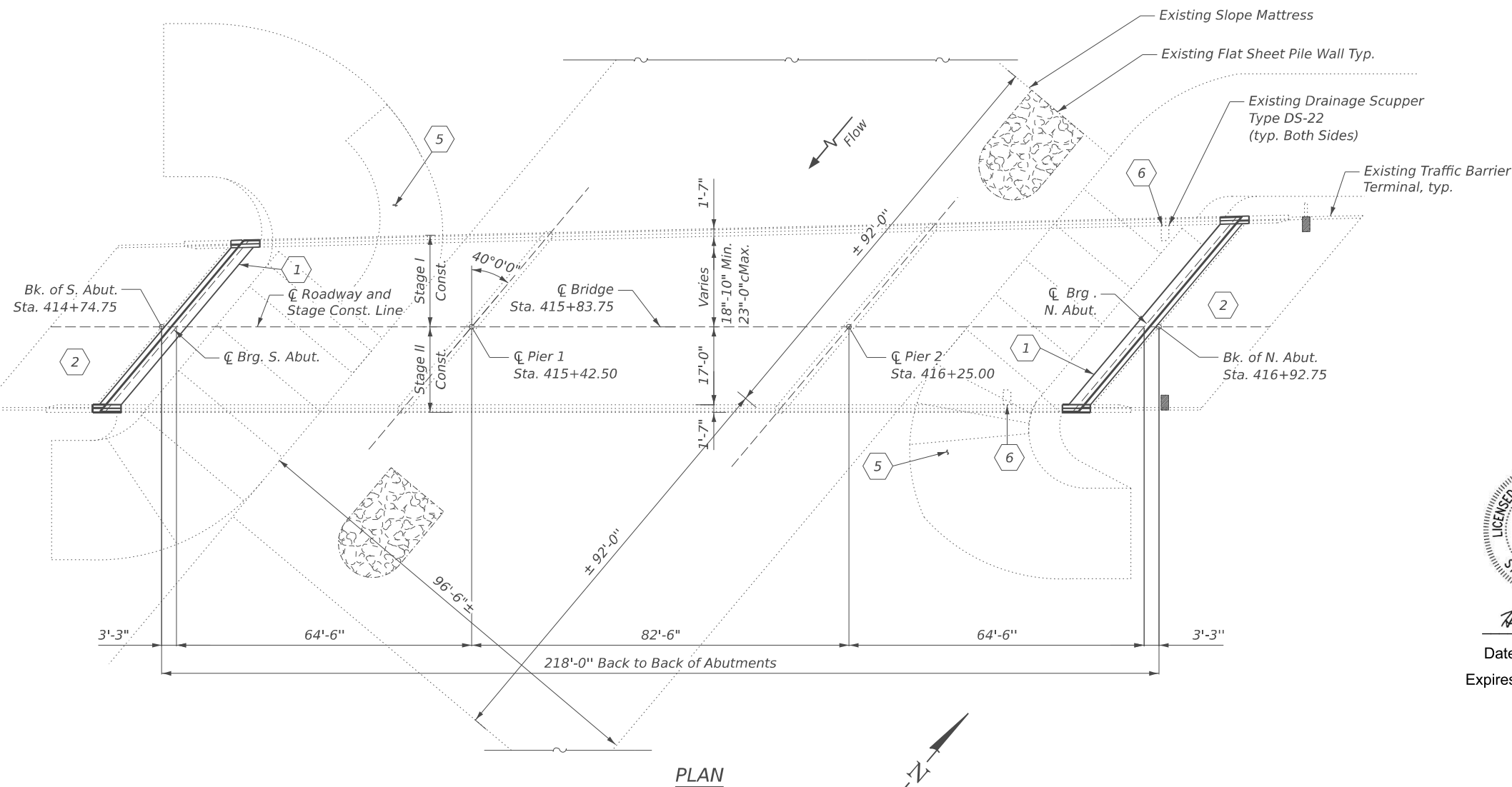
S.N. 006-0084 was built in 1964 as F.A. Rte. 30, Section 22B. It consists of a 3-span composite reinforced concrete deck on steel WF stringers supported on stub abutment with concrete piles and solid-wall piers on timber piles. The deck was replaced in 2000. The out-to-out deck width varies from 39'-0" at the S. Abutment to 43'-2" at the N. Abutment. The proposed repairs will be performed using stage construction.

SCOPE OF WORK: (see  in Plan & Elevation)

1. Remove expansion joints at both abutments and replace with new strip seal joints.
2. Perform partial depth repairs and epoxy injection of cracks noted on both approach slabs.
3. Perform epoxy injection of cracks noted on deck.
4. Epoxy inject vertical crack noted at Pier 1.
5. Remove settled and damaged slope wall and replace with Stone Riprap, Class A4.
6. Extend existing drains a minimum of 6" below bottom of beam bottom flange.



ELEVATION



PLAN

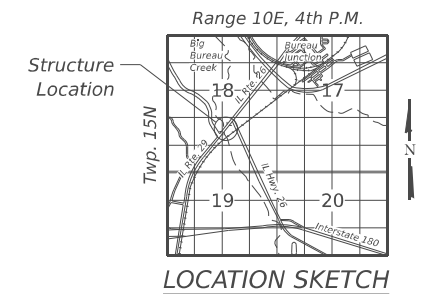
DESIGN STRESSES

FIELD UNITS

New Construction
 $f'_c = 4,000$ psi (Superstructure)
 $f_y = 60,000$ psi (Reinforcement)

Existing Superstructure
 $f'_c = 3,500$ psi (Deck Concrete)
 $f_y = 60,000$ psi (Reinforcement)
 $f_y = 36,000$ psi (M270 Grade 36)

Existing Substructure
 $f'_c = 3,500$ psi (Deck Concrete)
 $f_y = 40,000$ psi (Reinforcement)



Hemal Patel
 Date: 01/29/2026
 Expires: 11/30/2026

GENERAL PLAN & ELEVATION
ILLINOIS ROUTE 29 OVER
BIG BUREAU CREEK
F.A.S. RTE. 2245 - SEC. (22B)BRR
BUREAU COUNTY
STATION 415+83.75
STRUCTURE NO. 006-0084

MODEL: Br. Sheet, Consultant
 FILE NAME: C:\Users\DanielPruchnick\10-4 Engineering - Documents\Projects\02-103-00 IDOT PTB 213-037 D3 Phase II V-1600 CADD DESIGN\606 Structural\WO-6_C66R69\Sheet\Page 1_GP&E_WO6_006-0084.dgn



USER NAME	= DanielPruchnick	DESIGNED	- HP	REVISED	- ####
DRAWN	- DP	REVISIONS	- ####		
PLOT SCALE	= 1"=15'	CHECKED	- VP	REVISED	- ####
PLOT DATE	= 1/19/2026	DATE	- 01/29/2026	REVISED	- ####

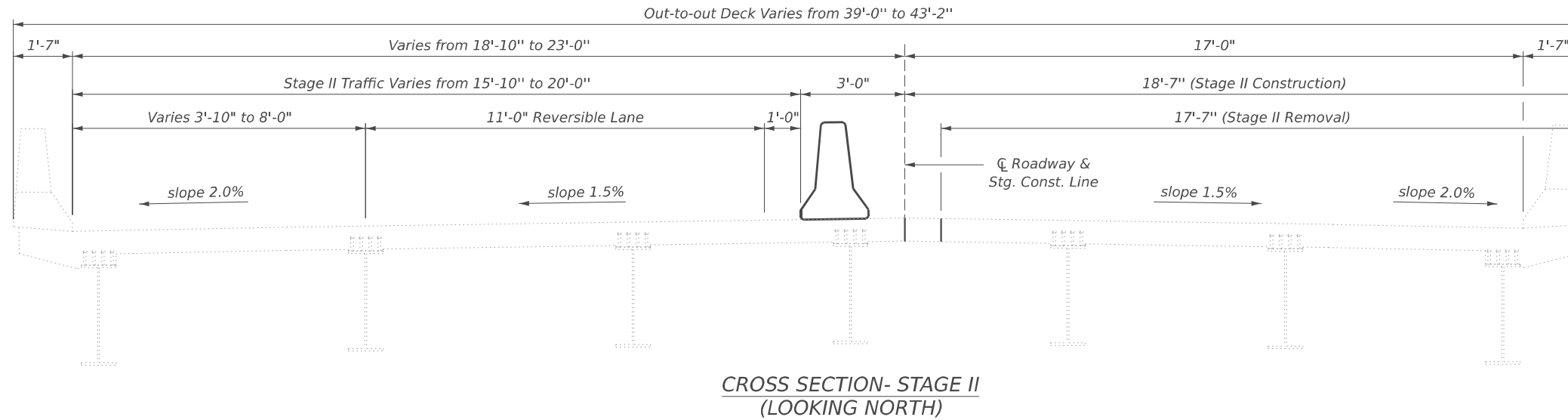
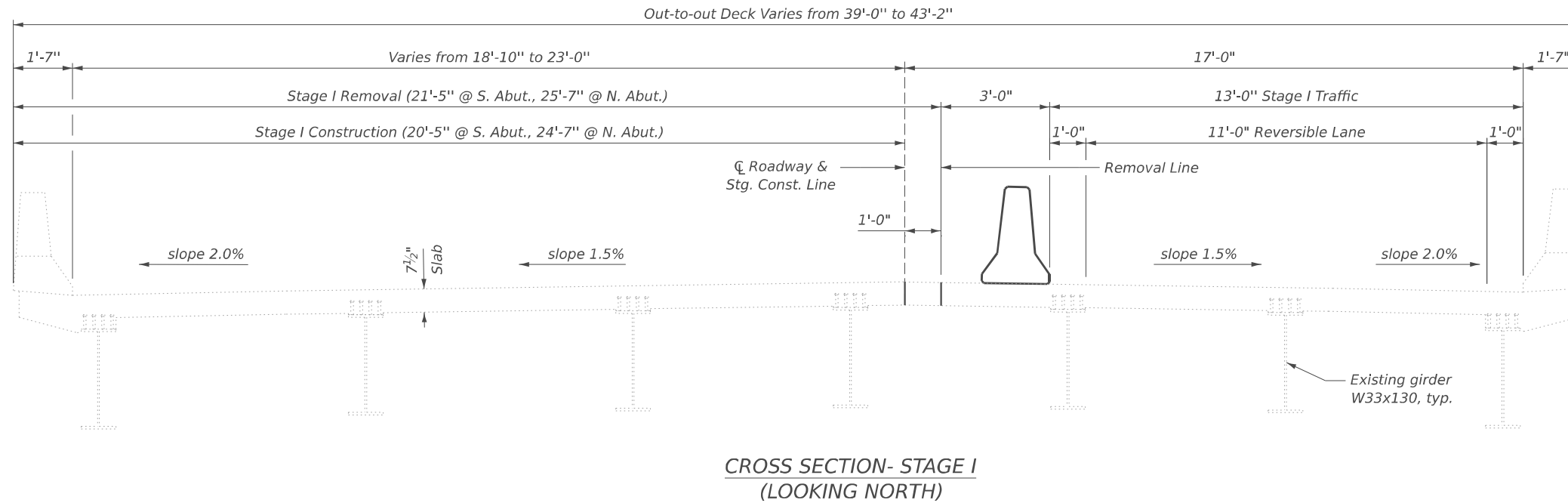
STATE OF ILLINOIS
DEPARTMENT OF TRANSPORTATION

GENERAL PLAN & ELEVATION
STRUCTURE NO. 006-0084

SHEET S-1 OF S-11 SHEETS

F.A.S. RTE.	SECTION	COUNTY	TOTAL SHEETS	SHEET NO.
2245	(22B)BRR	BUREAU	26	14
CONTRACT NO. 66R69				
ILLINOIS FED. AID PROJECT				

MODEL: Br Sheet Consultant
 FILE NAME: C:\Users\DanielPruchnick\10-4 Engineering - Documents\Projects\02-103-00 IDOT PTB 213-037 D3 Phase II V-1600 CADD DESIGN\606 Structural\WC-6_C66R69\Sheet\Page 2_General Notes_Index of Sheets_and Total B.O.M..dgn



GENERAL NOTES

Plan dimensions and details relative to the existing structure have been taken from existing plans and are subject to nominal construction variations. It shall be the Contractor's responsibility to verify such dimensions and details in the field and make the necessary approved adjustments prior to construction or ordering of materials. Such variations shall not be cause for additional compensation for a change in the scope of work. However, the Contractor will be paid for the quantity actually furnished at the unit price for the work.

Reinforcement bars designated (E) shall be epoxy coated.

Protective Coat shall be applied to the finished surfaces of all new concrete areas and the deck and approach slab repairs.

The deck surface shall have its final finish tined according to Article 420.09(e)(1) of the Standard Specifications. Cost included with Concrete Superstructure.

Areas of deck and approach slab repairs are estimated. The actual repair areas shall be delineated by the Engineer in the field and show actual repair locations and limits in the as-built plans.

Joint openings shall be adjusted according to Article 520.04 of the Std. Specs. when the deck is poured at an ambient temperature other than 50° F.

Cost of removal and disposal of existing expansion joints shall be included with the cost of Concrete Removal.

Existing name plates shall be removed, cleaned and stored for re-installation after the joint replacement is completed. Cost to be included with Concrete Removal.

Expansion joints shall be fabricated to conform to the existing bridge cross slope.

INDEX OF SHEETS

- S-1. General Plan & Elevation
- S-2. General Notes, Index of Sheets, & Total BOM
- S-3. Deck & Approach Slab Repair Details
- S-4. As-Built Deck & Approach Slab Repair Details
- S-5. Removal Details
- S-6. Reconstruction Details
- S-7. Expansion Joint Sections, Details, & Bar List
- S-8. Preformed Joint Strip Seal
- S-9. Slopewall & Substructure Repairs
- S-10. Miscellaneous Repairs
- S-11. Bar Splicer and Mechanical Splicer Details

TOTAL BILL OF MATERIAL

ITEM	UNIT	SUPER	SUB	TOTAL
Stone Riprap, Class A4	Sq. Yd.	-	480	480
Filter Fabric	Sq. Yd.	-	480	480
Concrete Removal	Cu. Yd.	20.0	-	20.0
Slope Wall Removal	Sq. Yd.	-	480	480
Concrete Superstructure	Cu. Yd.	20.0	-	20.0
Protective Coat	Sq. Yd.	50	-	50
Reinforcement Bars, Epoxy Coated	Pound	2,930	-	2,930
Bar Splicers	Each	30	-	30
Preformed Joint Strip Seal	Foot	104	-	104
Epoxy Crack Injection	Foot	104	16	120
Deck Drain Extensions	Each	2	-	2
Approach Slab Repair (Partial Depth)	Sq. Yd.	45	-	45
Concrete Curb Repair	Foot	3	-	3
Rock Fill - Embankment	Cu. Yd.	-	8	8



USER NAME = DanielPruchnick	DESIGNED - HP	REVISED - ####
PLOT SCALE = \$SCALE\$	DRAWN - DP	REVISED - ####
PLOT DATE = 1/28/2026	CHECKED - VP	REVISED - ####
	DATE - 01/29/2026	REVISED - ####

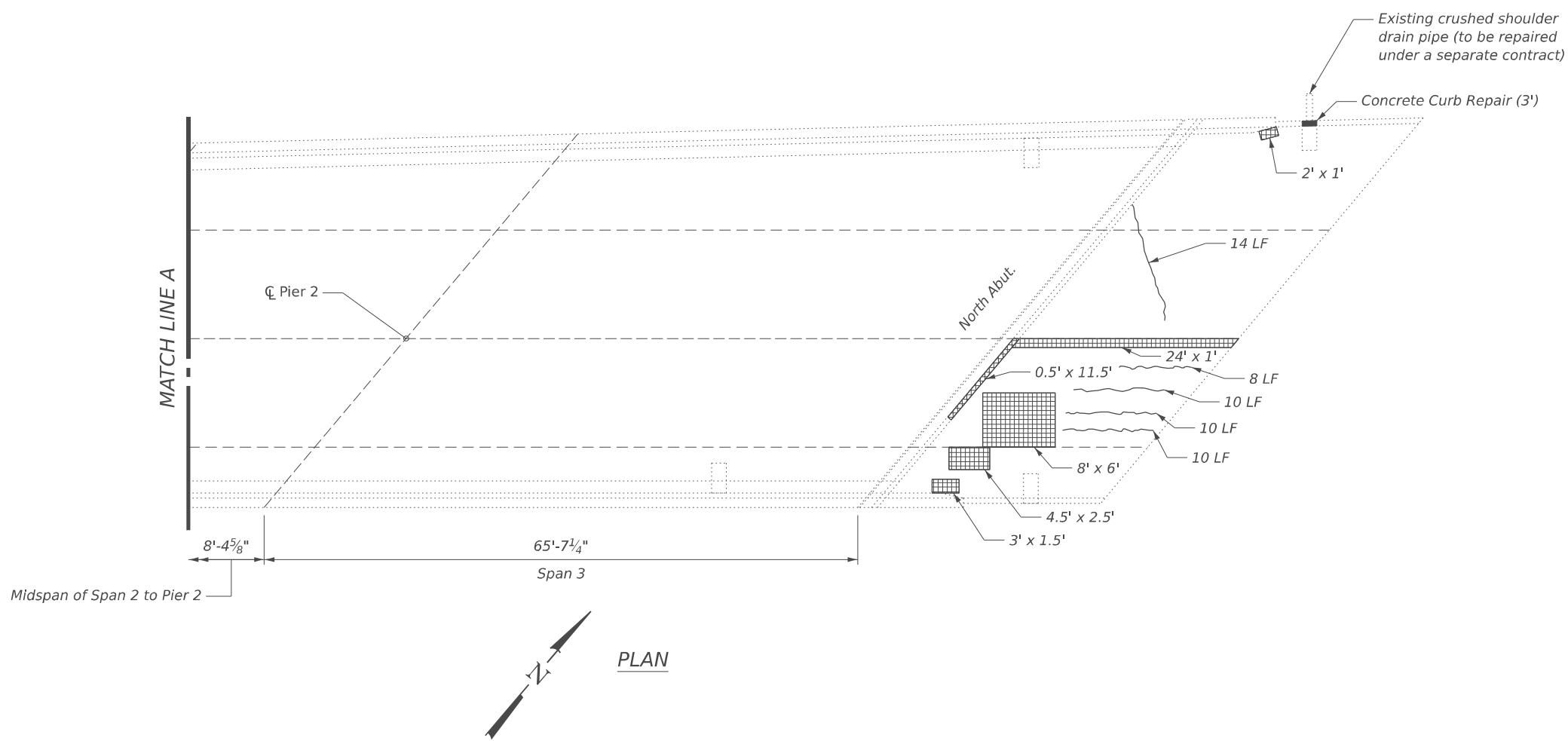
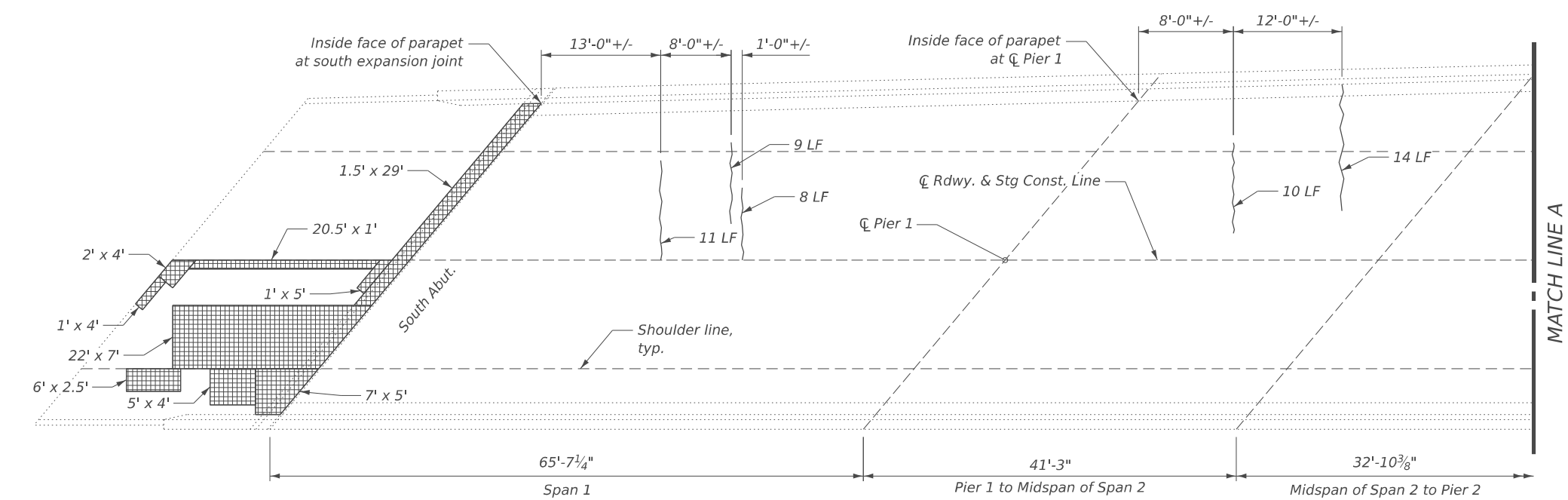
**STATE OF ILLINOIS
DEPARTMENT OF TRANSPORTATION**

**GENERAL NOTES, INDEX OF SHEETS, & TOTAL BOM
STRUCTURE NO. 006-0084**

SHEET S-2 OF S-11 SHEETS

F.A.S RTE.	SECTION	COUNTY	TOTAL SHEETS	SHEET NO.
2245	(22B)BRR	BUREAU	26	15
CONTRACT NO. 66R69				
ILLINOIS FED. AID PROJECT				

MODEL: Br Sheet Consultant
 FILE NAME: C:\Users\DanielPruchnick\10-4 Engineering - Documents\Projects\02-103-00 IDOT PTB 213-037 D3 Phase II V-1600 CADD DESIGN\606 Structural\WC-6_C66R69\Sheet\Page 3_Deck & Approach Slab Plans.dgn



PLAN

LEGEND

- Approach Slab Repair (Partial Depth)
- Epoxy Crack Injection

BILL OF MATERIAL

Item	Unit	Total
Approach Slab Repair (Partial Depth)	Sq. Yd.	45
Epoxy Crack Injection	Foot	104
Concrete Curb Repair	Foot	3



USER NAME = DanielPruchnick	DESIGNED - HP	REVISED - ####
PLOT SCALE = \$SCALE\$	DRAWN - DP	REVISED - ####
PLOT DATE = 1/19/2026	CHECKED - VP	REVISED - ####
	DATE - 01/29/2026	REVISED - ####

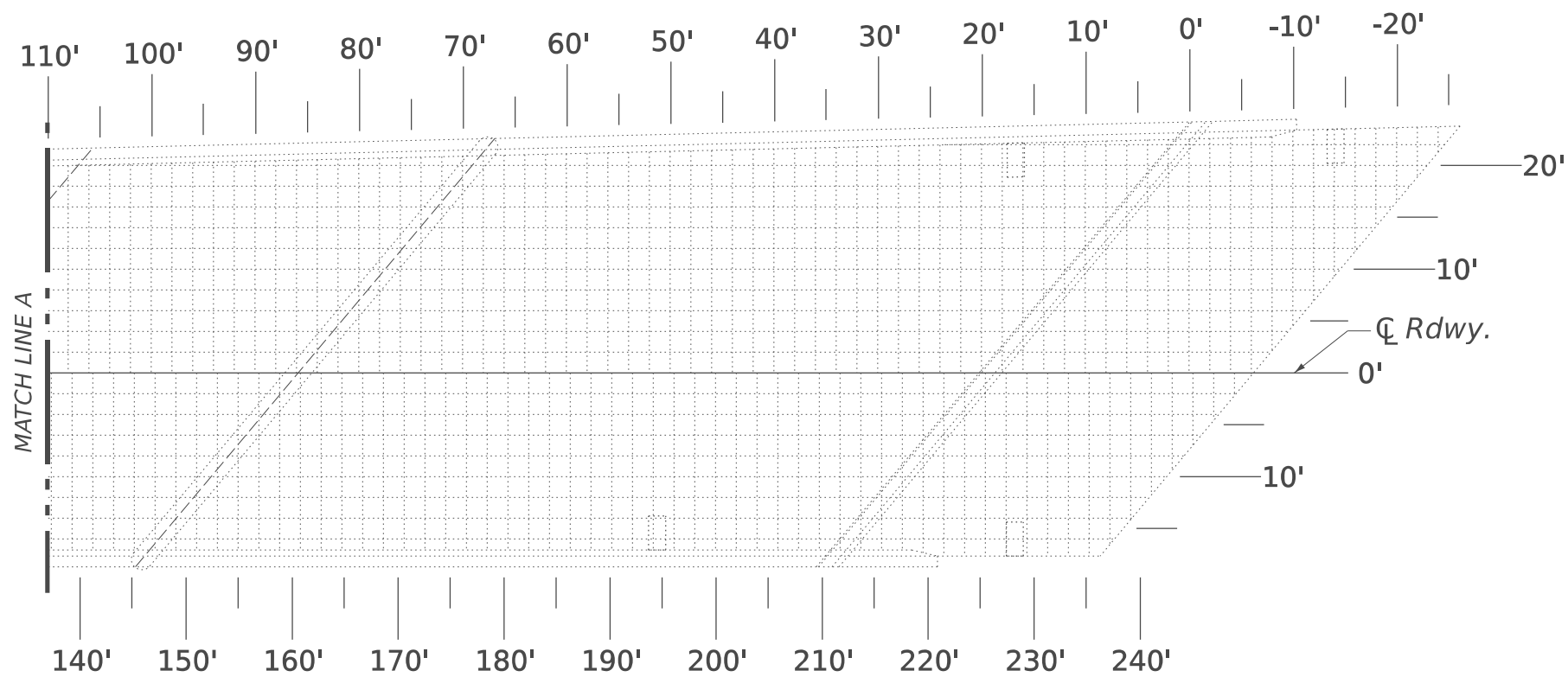
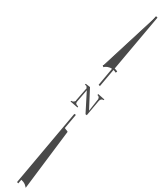
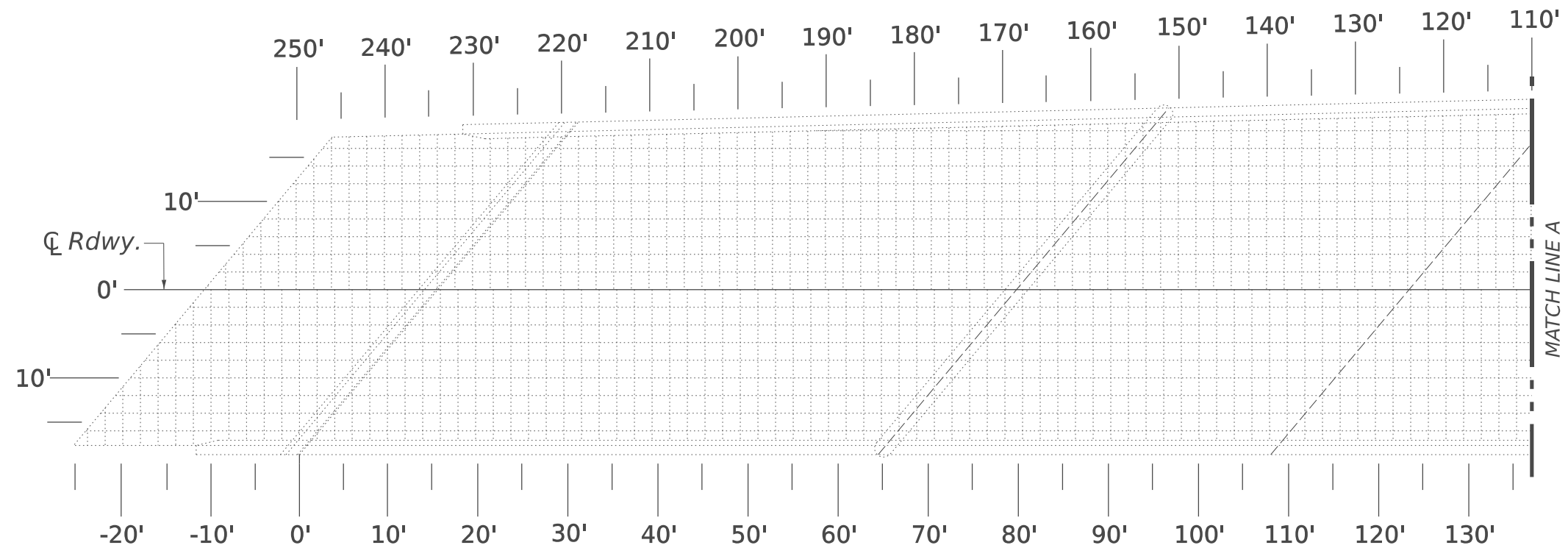
**STATE OF ILLINOIS
 DEPARTMENT OF TRANSPORTATION**

**DECK & APPROACH SLAB REPAIR DETAILS
 STRUCTURE NO. 006-0084**

SHEET S-3 OF S-11 SHEETS

F.A. RTE.	SECTION	COUNTY	TOTAL SHEETS	SHEET NO.
2245	(22B)BRR	BUREAU	26	16
CONTRACT NO. 66R69				
ILLINOIS FED. AID PROJECT				

MODEL: Br Sheet Consultant
 FILE NAME: C:\Users\DanielPruchnick\10-4 Engineering - Documents\Projects\02-103-00 IDOT PTB 213-037 D3 Phase II V-1600 CADD DESIGN\606 Structural\WC-6_C66R69\Sheet\Page 4_Deck & Approach Slab Crdlines.dgn



**"AS-BUILT" PLAN
 DECK & APPROACH REPAIRS**

Note:
 When all deck slab repairs have been completed, the Engineer shall record the actual deck slab repair locations and repair areas on this "As-Built" plan sheet. When all deck repairs have been shown on this detail, the "As-Built" deck slab repairs shall be submitted to the Bridge Office for their record.



USER NAME = DanielPruchnick
 PLOT SCALE = \$SCALE\$
 PLOT DATE = 1/19/2026

DESIGNED - HP
 DRAWN - DP
 CHECKED - VP
 DATE - 01/29/2026

REVISED - ####
 REVISED - ####
 REVISED - ####
 REVISED - ####

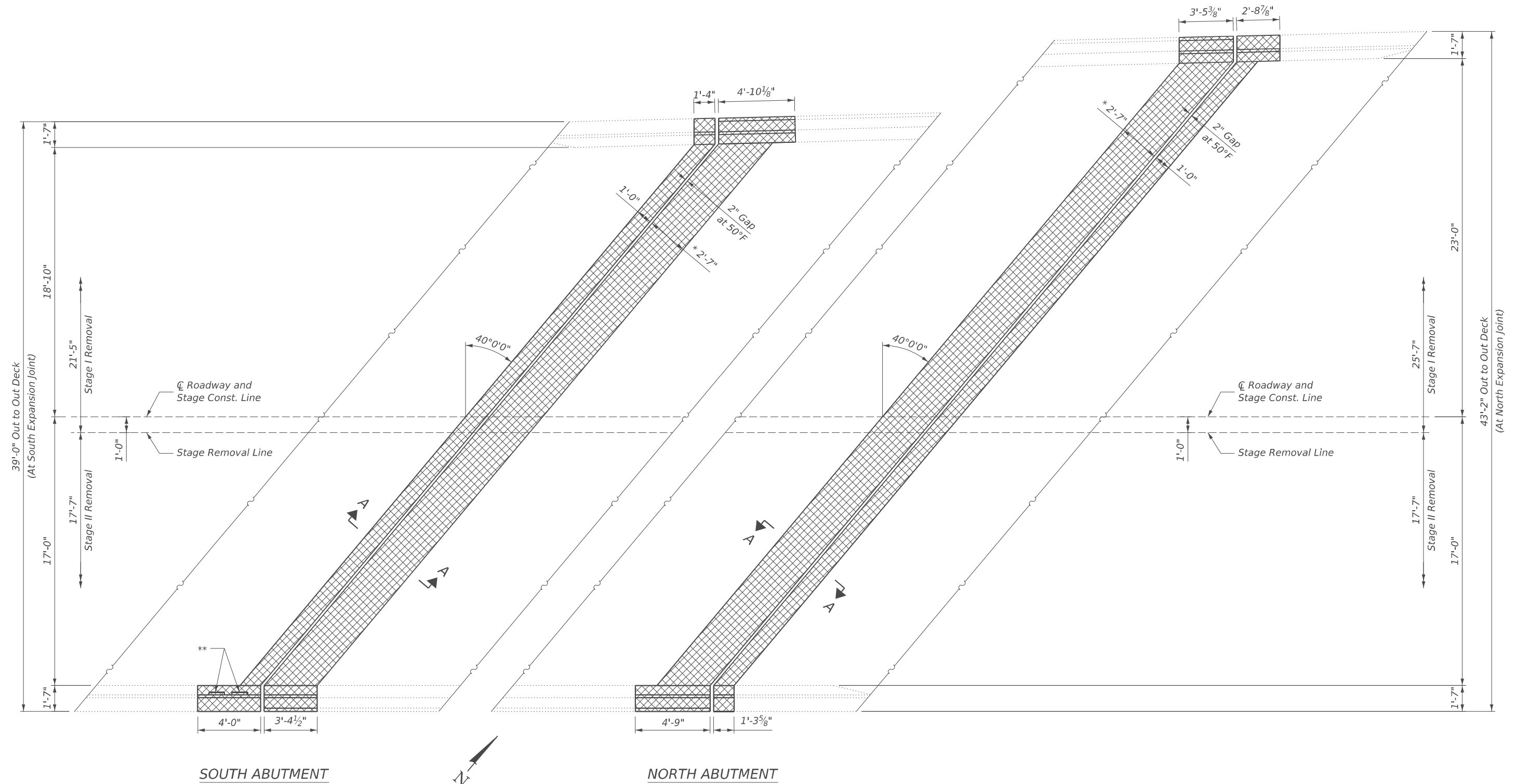
**STATE OF ILLINOIS
 DEPARTMENT OF TRANSPORTATION**

**"AS-BUILT" DECK & APPROACH SLAB REPAIR DETAILS
 STRUCTURE NO. 006-0084**

SHEET S-4 OF S-11 SHEETS

F.A.S. RTE.	SECTION	COUNTY	TOTAL SHEETS	SHEET NO.
2245	(22B)BRR	BUREAU	26	17
CONTRACT NO. 66R69				
ILLINOIS FED. AID PROJECT				

MODEL: Br Sheet Consultant
 FILE NAME: C:\Users\DanielPruchnick\10-4 Engineering - Documents\Projects\02-103-00 IDOT PTB 213-037 D3 Phase II V-1600 CADD DESIGN\606 Structural\WC-6_C66R69\Sheet\Page 5_Expansion Joint Removal.dgn



LEGEND
 Concrete Removal

(*) The noted deck removal dimension is for the proposed deck gap (in next sheet) based on a Rolled Rail Strip Seal Joint. If Contractor elects to use the Welded Rail Strip Seal Joint, deck removal dimensions may require adjustments to satisfy the details on Base Sheet S-8. See Preformed Joint Strip Seal sheet for more details.

(**) Remove Name Plates, clean and store for reinstallation when repair is completed. Cost included with Concrete Removal.



USER NAME = DanielPruchnick	DESIGNED - HP	REVISED - ####
	DRAWN - DP	REVISED - ####
PLOT SCALE = \$SCALE\$	CHECKED - VP	REVISED - ####
PLOT DATE = 1/28/2026	DATE - 01/29/2026	REVISED - ####

**STATE OF ILLINOIS
 DEPARTMENT OF TRANSPORTATION**

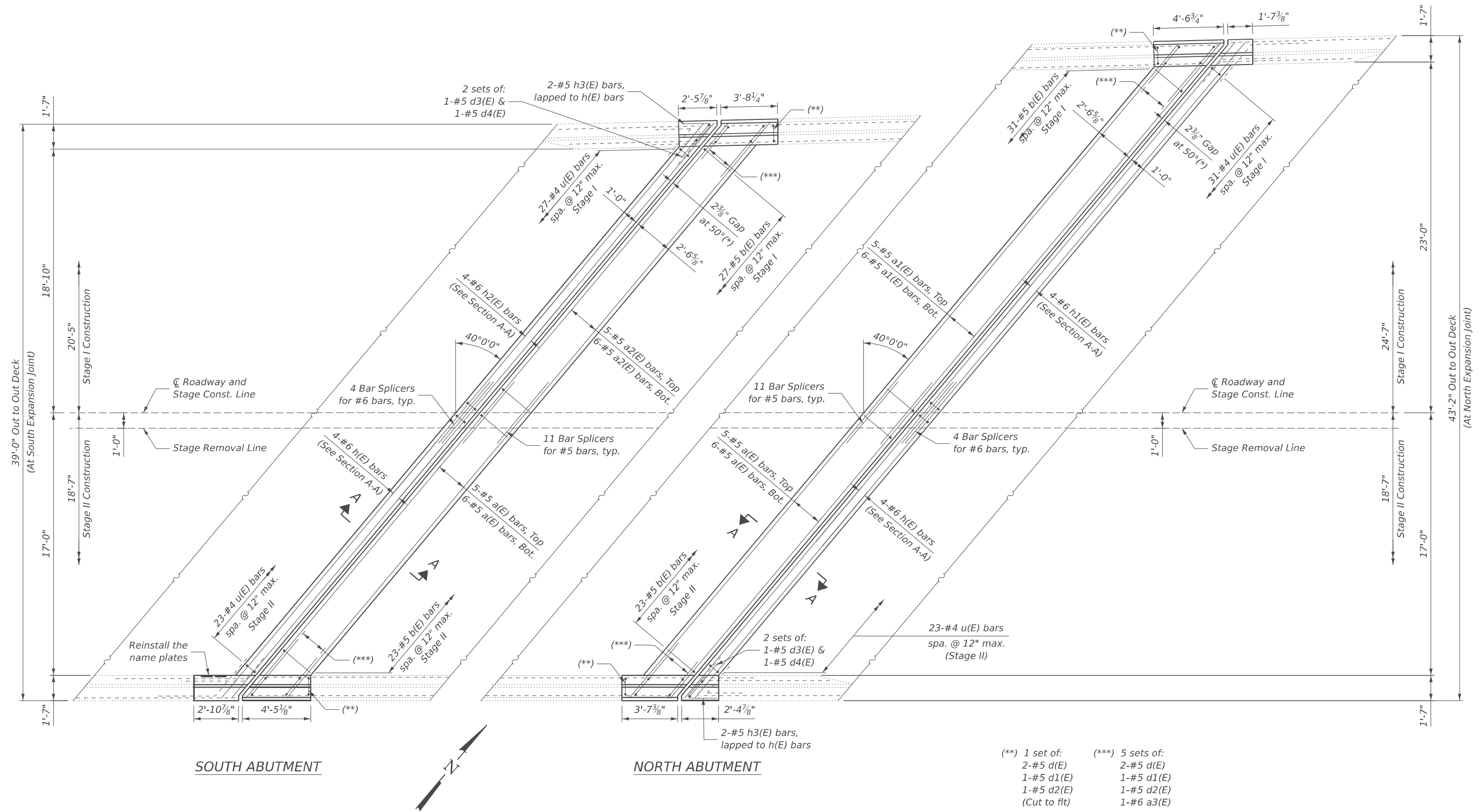
**REMOVAL DETAILS
 STRUCTURE NO. 006-0084**

SHEET S-5 OF S-11 SHEETS

F.A.S. RTE.	SECTION	COUNTY	TOTAL SHEETS	SHEET NO.
2245	(22B)BRR	BUREAU	26	18
CONTRACT NO. 66R69				

ILLINOIS FED. AID PROJECT

MODEL: Br Sheet Consultant
 FILE NAME: C:\Users\DanielPruchnick\10-4 Engineering - Documents\Projects\02-103-00 IDOT PTB 213-037 D3 Phase II V-1600 CADD DESIGN\606 Structural\W06_6_C66R69\Sheet\Page 6_Expansion Joint Replacement.dgn



(*) The noted deck dimension is for the proposed deck gap (in next sheet) based on a Rolled Rail Strip Seal Joint. If Contractor elects to use the Welded Rail Strip Seal Joint, deck dimensions may require adjustments to satisfy the details on Base Sheet S-8. See Preformed Joint Strip Seal sheet for more details.

- (**) 1 set of:
 2-#5 d(E)
 1-#5 d1(E)
 1-#5 d2(E)
 (Cut to fit)
- (***) 5 sets of:
 2-#5 d(E)
 1-#5 d1(E)
 1-#5 d2(E)
 1-#6 a3(E)



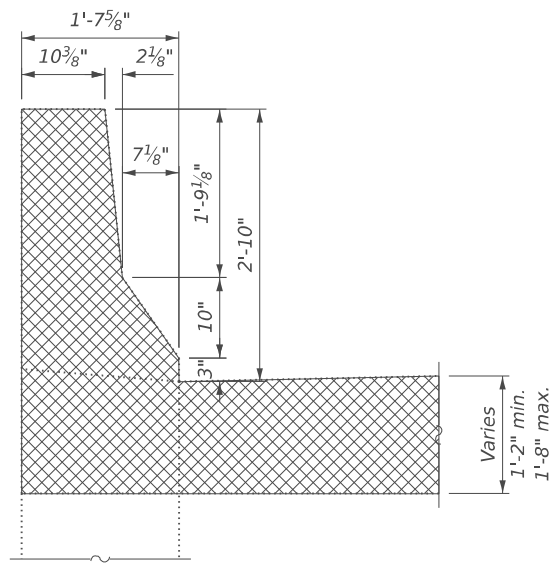
USER NAME = DanielPruchnick	DESIGNED - HP	REVISED - ####
PLOT SCALE = \$SCALE\$	DRAWN - DP	REVISED - ####
PLOT DATE = 3/11/2026	CHECKED - VP	REVISED - ####
	DATE - 01/29/2026	REVISED - ####

STATE OF ILLINOIS
 DEPARTMENT OF TRANSPORTATION

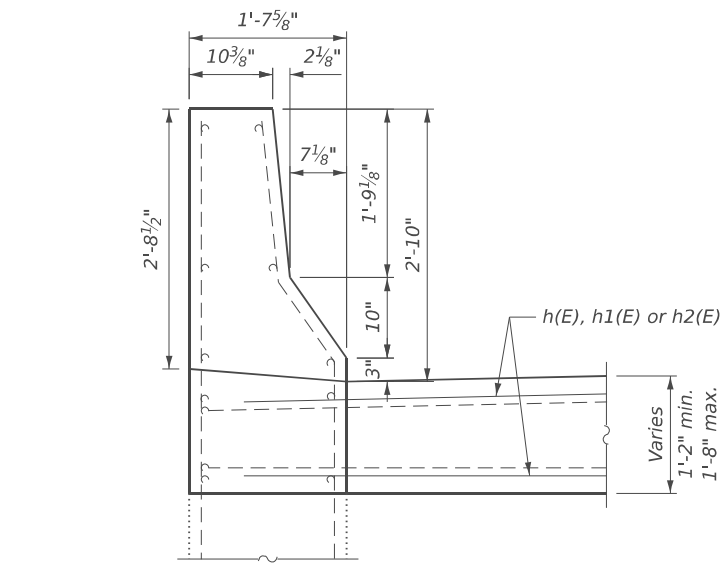
RECONSTRUCTION DETAILS
 STRUCTURE NO. 006-0084
 SHEET S-6 OF S-11 SHEETS

F.A.S. RTE.	SECTION	COUNTY	TOTAL SHEETS	SHEET NO.
2245	(22B)BRR	BUREAU	26	19
CONTRACT NO. 66R69				
ILLINOIS FED. AID PROJECT				

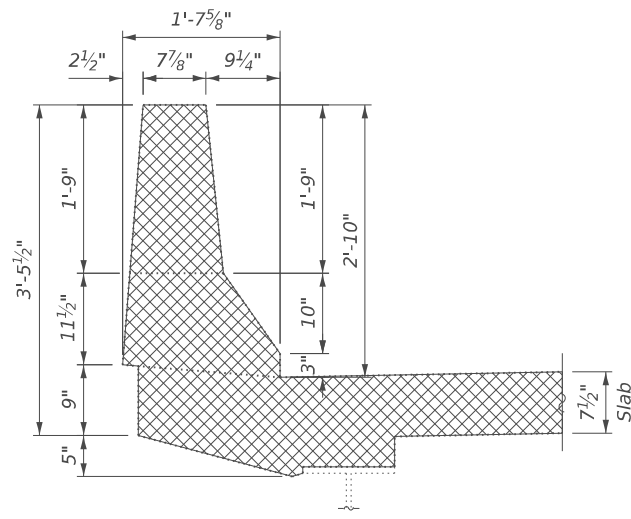
MODEL: Br_Sheet_Consultant
 FILE NAME: C:\Users\DanielPruchnick\10-4 Engineering - Documents\Projects\02-103-040 IDOT PTB 213-037 D3 Phase II V-A\600 CADD DESIGN\606 Structural\WC-6_C66R69\SheetPage 7_Expansion Joint Sections_Details_Bar List.dgn



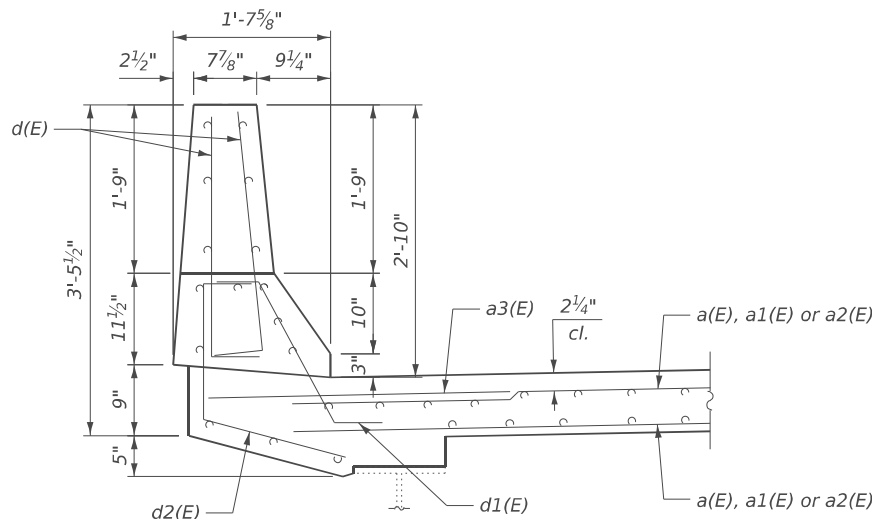
SECTION THRU WING WALL (REMOVAL)
 (North Abut. Shown, South Abut. similar)



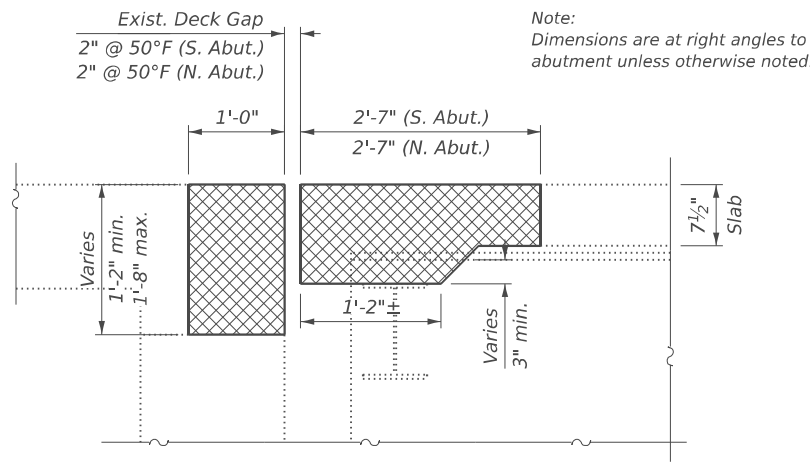
SECTION THRU WING WALL (RECONSTRUCTION)
 (North Abut. Shown, South Abut. similar)



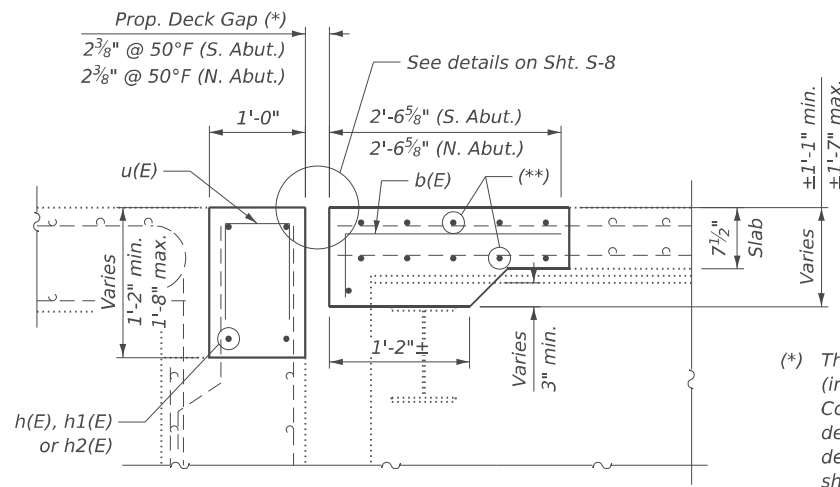
SECTION THRU PARAPET (REMOVAL)
 (North Abut. Shown, South Abut. similar)



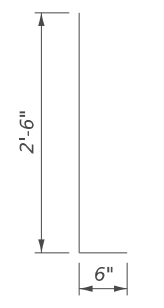
SECTION THRU PARAPET (RECONSTRUCTION)
 (North Abut. Shown, South Abut. similar)



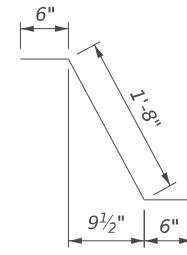
SECTION A-A (REMOVAL)
 (North Abut. Shown, South Abut. similar)



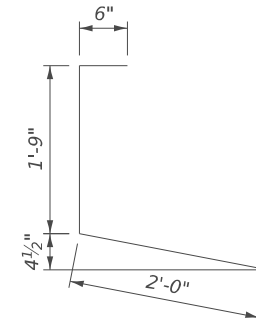
SECTION A-A (RECONSTRUCTION)
 (North Abut. Shown, South Abut. similar)



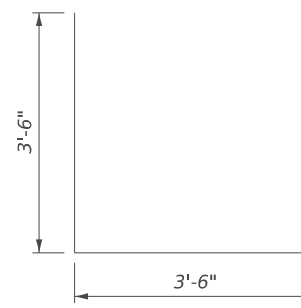
BAR d(E)



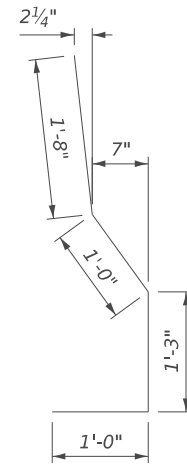
BAR d1(E)



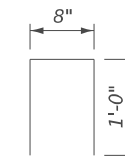
BAR d2(E)



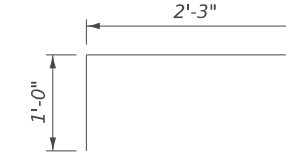
BAR d3(E)



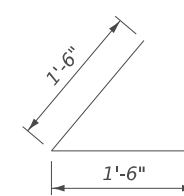
BAR d4(E)



BAR u(E)



BAR b(E)



BAR h3(E)

BAR LIST - BOTH ABUTMENTS

Bar	No.	Size	Length	Shape
a(E)	22	#5	23'-5"	—
a1(E)	11	#5	31'-3"	—
a2(E)	11	#5	27'-1"	—
a3(E)	20	#6	5'-0"	—
b(E)	104	#5	3'-3"	└
d(E)	48	#5	3'-0"	└
d1(E)	24	#5	2'-8"	└
d2(E)	24	#5	4'-3"	└
d3(E)	4	#5	7'-0"	└
d4(E)	4	#5	4'-11"	└
h(E)	8	#6	23'-10"	—
h1(E)	4	#6	31'-8"	—
h2(E)	4	#6	27'-6"	—
h3(E)	4	#5	3'-0"	└
u(E)	104	#4	2'-8"	└

BILL OF MATERIAL

Item	Unit	Total
Concrete Removal	Cu. Yd.	20.0
Concrete Superstructure	Cu. Yd.	20.0
Protective Coat	Sq. Yd.	50
Reinforcement Bars, Epoxy Coated	Pound	2,930
Bar Splicers	Each	30

(*) The noted deck dimension is for the proposed deck gap (in next sheet) based on a Rolled Rail Strip Seal Joint. If Contractor elects to use the Welded Rail Strip Seal Joint, deck dimensions may require adjustments to satisfy the details on Base Sheet S-8. See Preformed Joint Strip Seal sheet for more details.

(**) a(E), a1(E) or a2(E) bar, typ.



USER NAME = DanielPruchnick	DESIGNED - HP	REVISED - ####
PLOT SCALE = SSCALE\$	DRAWN - DP	REVISED - ####
PLOT DATE = 3/11/2026	CHECKED - VP	REVISED - ####
	DATE - 01/29/2026	REVISED - ####

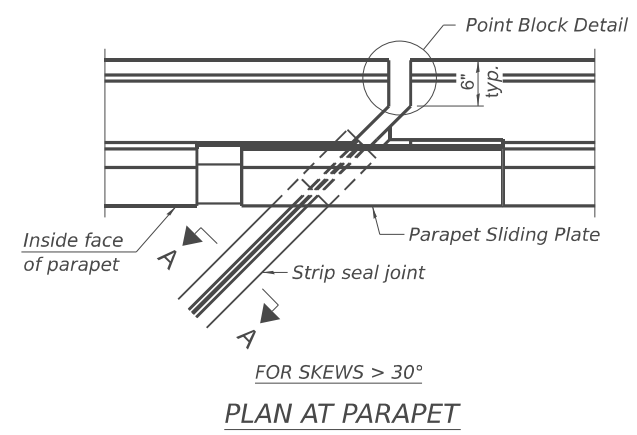
**STATE OF ILLINOIS
 DEPARTMENT OF TRANSPORTATION**

**EXPANSION JOINT SECTIONS, DETAILS, & BAR LIST
 STRUCTURE NO. 006-0084**

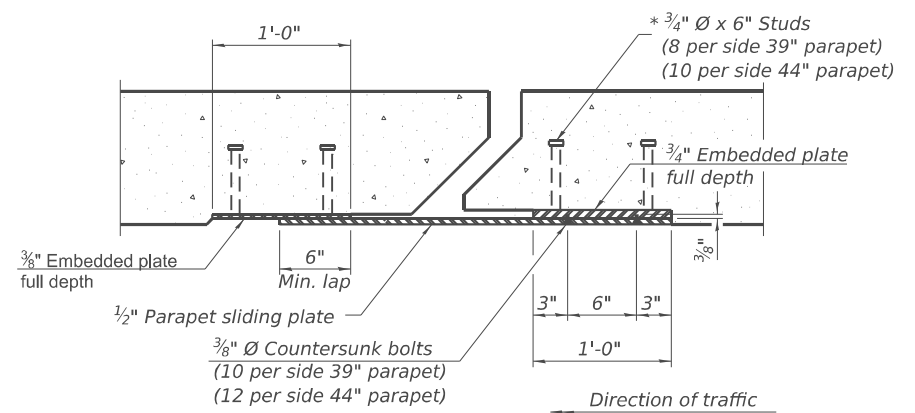
SHEET S-7 OF S-11 SHEETS

F.A.S. RTE.	SECTION	COUNTY	TOTAL SHEETS	SHEET NO.
2245	(22B)BRR	BUREAU	26	20
CONTRACT NO. 66R69				
ILLINOIS FED. AID PROJECT				

MODEL: Br. Sheet, Consultant
 FILE NAME: C:\Users\DavidPruchnick\10-4 Engineering - Documents\Projects\02-103-00 IDOT P1TB 213-037 D3 Phase II V-1600 CADD DESIGN\606 Structural\W06-6_C66R69\Sheet\Page 8_Preformed Joint Seal Details.dgn

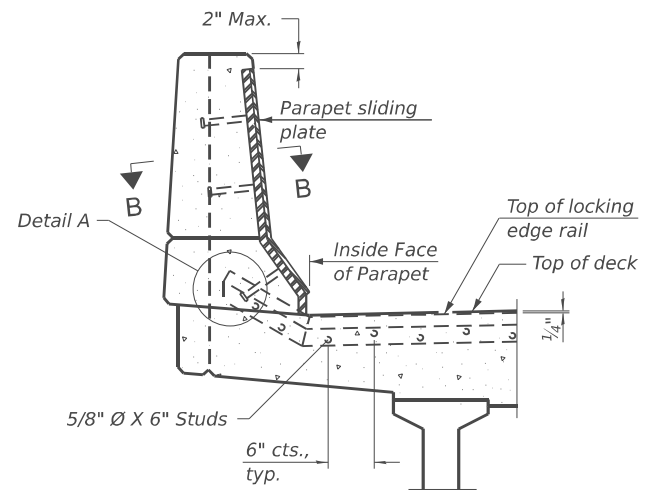


PLAN AT PARAPET



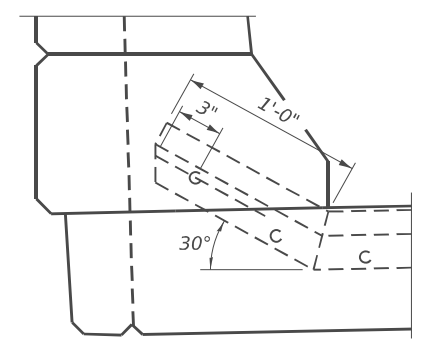
SECTION B-B

Notes:
 The strip seal shall be made continuous and shall have a minimum thickness of 1/4". The configuration of the strip seal shall match the configuration of the locking edge rails. Open or "webbed" strip seal gland configurations are not permitted. The gland shall be sized for a maximum rated movement of 4 inches.
 The locking edge rails depicted are configured for typical applications and are conceptual only. The actual configuration of the locking edge rails and matching strip seal may vary from manufacturer to manufacturer provided they fit the application and meet the minimum anchorage shown. Flanged edge rails, however, will not be allowed. Locking edge rails may exceed the 4 1/2" maximum depth provided the anchorage system is revised according to the manufacturer's recommendation.
 The manufacturer's recommended installation methods shall be followed.
 All steel components shall be galvanized after fabrication according to article 520.03 of the Standard Specifications.
 The maximum space between locking edge rail segments shall be 3/16" and sealed with a suitable sealant; however, any rail joint within 10' measured perpendicular to the face of the curb or parapet shall be welded as shown in the locking edge rail splice detail.
 Cost of parapet sliding plates, embedded plates, and anchorage studs included with Preformed Joint Strip Seal. 34" f-shape barrier shown, 42" f-shape similar as noted.
 The concrete opening below the strip seal will vary based on the locking edge rail chosen by the Contractor. Deck and parapet lengths shown elsewhere in the plans are dimensioned to the concrete opening, not the joint opening, and are based on the rolled locking edge rail. If the Contractor elects to use a different locking edge rail, dimensional adjustments may be required. One exception to this would be the strip seal joint at the end of the precast bridge approach slab. For these cases the pavement connector length shall be adjusted, not the length of the bridge approach slab.

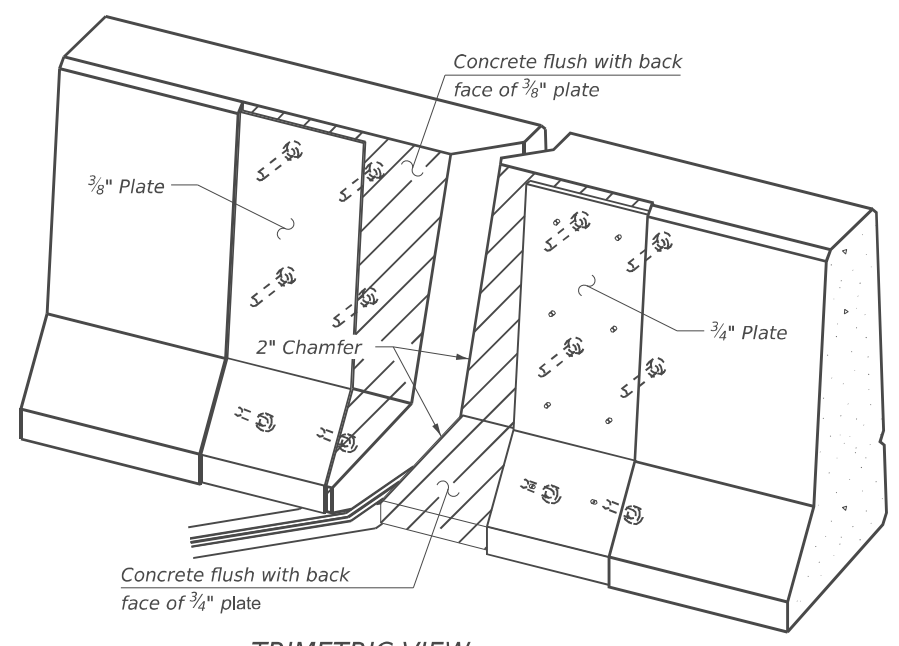


ELEVATION AT PARAPET

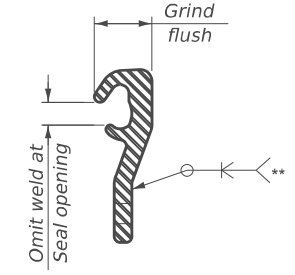
(SKEWS > 30° SHOWN. SKEWS ≤ 30° SIMILAR EXCEPT AS SHOWN IN PLAN VIEW.)



DETAIL A

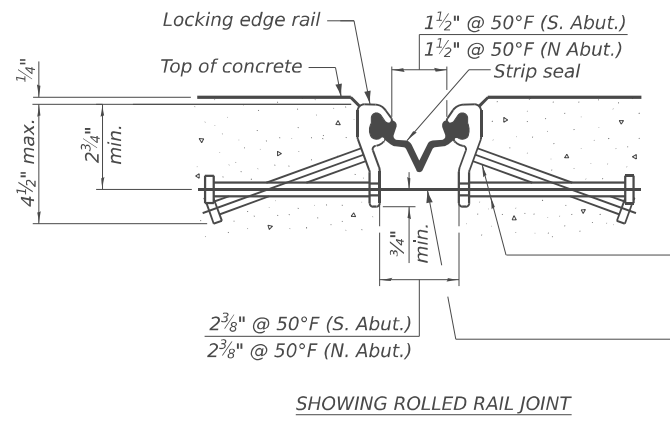


TRIMETRIC VIEW
(Showing embedded plates only)



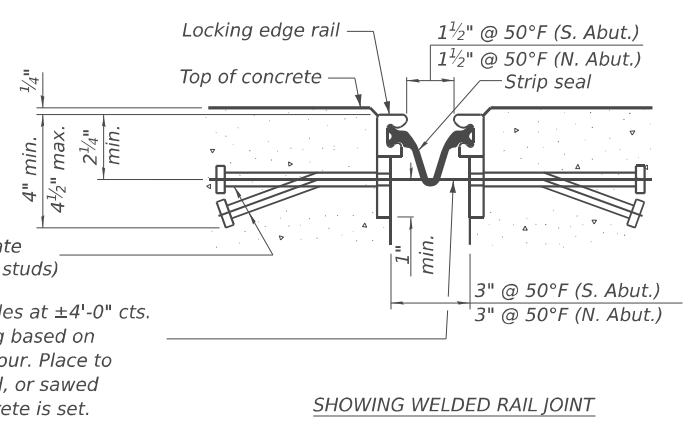
LOCKING EDGE RAIL SPLICE

The inside of the locking edge rail groove shall be free of weld residue. Rolled rail shown, welded rail similar.

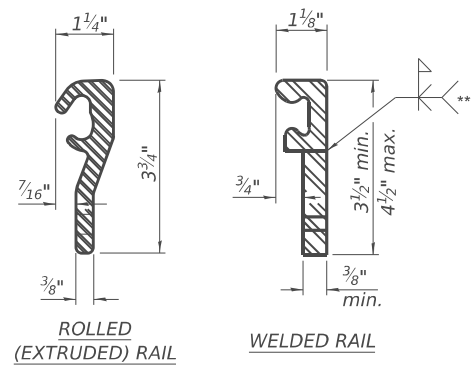


SHOWING ROLLED RAIL JOINT

* 5/8" Ø X 6" studs @ 6" cts. (alternate angled/bent studs with horizontal studs)
 3/8" Ø threaded rods in 3/16" Ø holes at ±4'-0" cts. for holding the proper joint opening based on the temperature during the deck pour. Place to miss studs. All rods shall be burned, or sawed off flush with the plates after concrete is set.



SHOWING WELDED RAIL JOINT



LOCKING EDGE RAILS

** Back gouge not required if complete joint penetration is verified by mock-up.

SECTION A-A

* Granular or solid flux filled headed studs conforming to article 1006.32 of the Std. Specs., automatically end welded.

BILL OF MATERIAL

Item	Unit	Total
Preformed Joint Strip Seal	Foot	104



USER NAME = Michael Nwaigbo	DESIGNED - HP	REVISED - ####
PLOT SCALE = SSCALE\$	DRAWN - DP	REVISED - ####
PLOT DATE = 1/29/2026	CHECKED - VP	REVISED - ####
	DATE - 01/29/2026	REVISED - ####

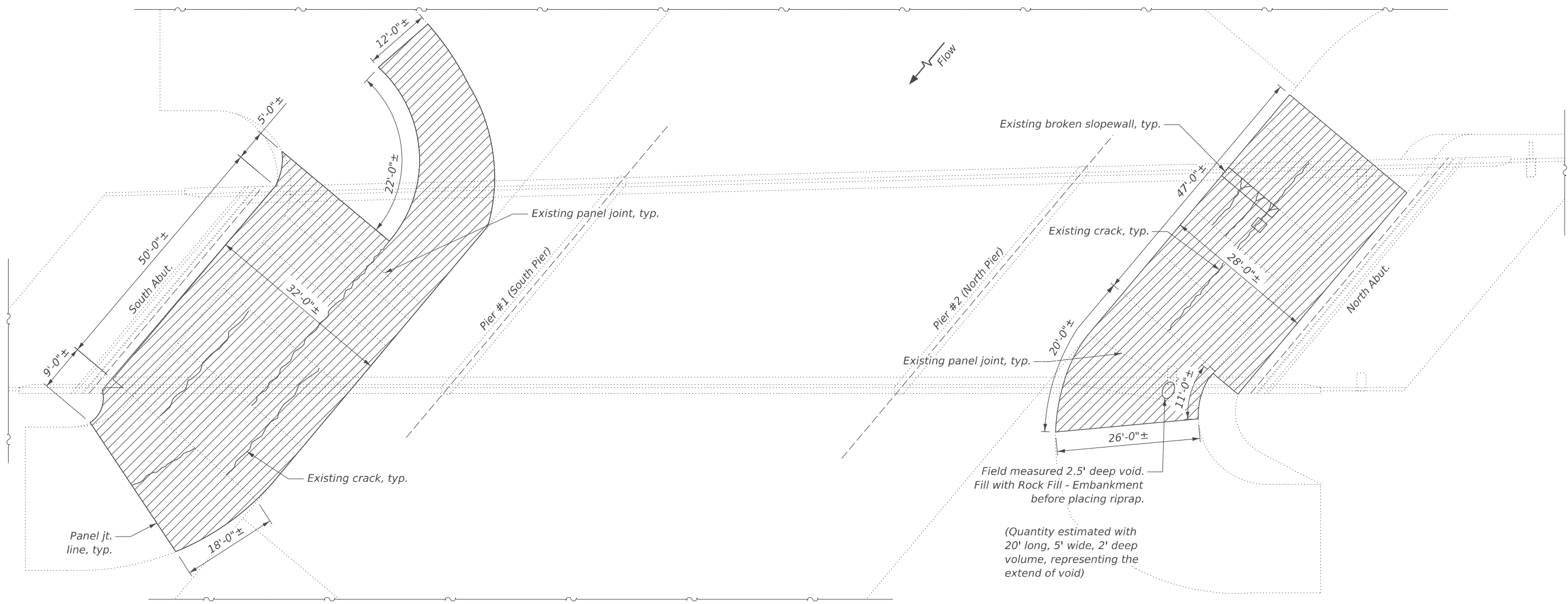
**STATE OF ILLINOIS
DEPARTMENT OF TRANSPORTATION**

**PREFORMED JOINT STRIP SEAL
STRUCTURE NO. 006-0084**

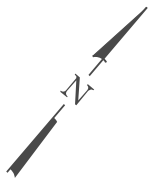
SHEET S-8 OF S-11 SHEETS

F.A.S. RTE.	SECTION	COUNTY	TOTAL SHEETS	SHEET NO.
2245	(22B)BRR	BUREAU	26	21
CONTRACT NO. 66R69				
ILLINOIS FED. AID PROJECT				

MODEL: Br Sheet Consultant
 FILE NAME: C:\Users\DavidPruchnick\10-4 Engineering - Documents\Projects\02-103-00 IDOT PTB 213-037 D3 Phase II V-1600 CADD DESIGN\606 Structural\WC-6_C66R69\Sheet\Page 9_Substructure Concrete Repairs.dgn
 10-4 Engineering, PLLC



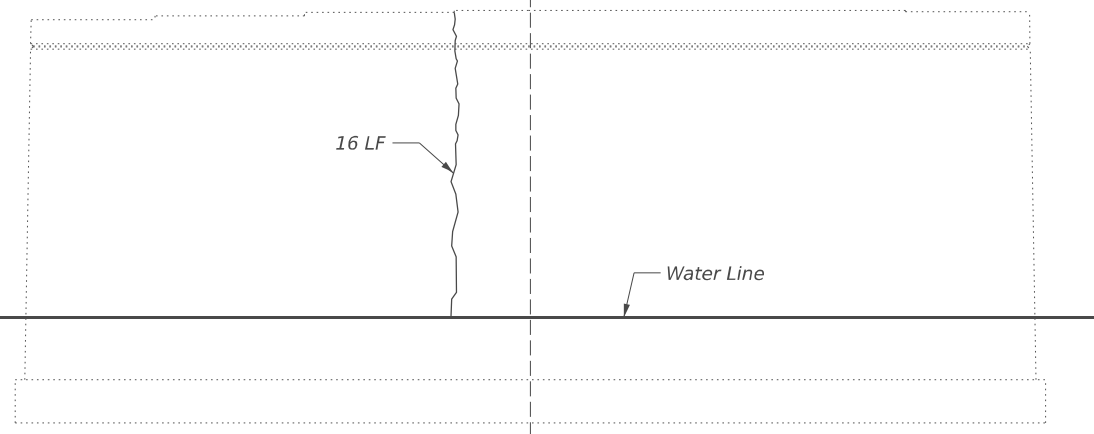
PLAN



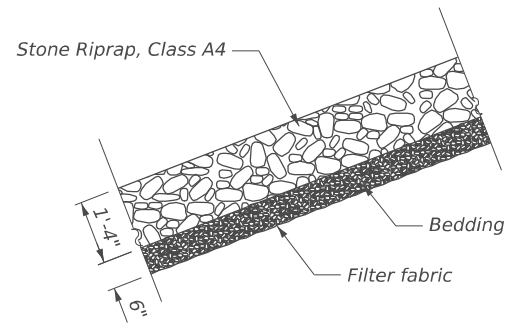
LEGEND

Slope Wall Removal & Stone Riprap, Class A4

Note:
 Use extreme care when removing the slopewall and not damage the existing abutment or pier structures.



PIER #1 - ELEVATION
 (LOOKING NORTH AT SOUTH FACE)



TYP. RIPRAP SECTION

BILL OF MATERIAL

Item	Unit	Total
Slope Wall Removal	Sq. Yd.	480
Stone Riprap, Class A4	Sq. Yd.	480
Filter Fabric	Sq. Yd.	480
Rock Fill - Embankment	Cu. Yd.	8
Epoxy Crack Injection	Foot	16



USER NAME = Michael Nwaigbo	DESIGNED - HP	REVISED - ####
PLOT SCALE = \$SCALE\$	DRAWN - DP	REVISED - ####
PLOT DATE = 1/19/2026	CHECKED - VP	REVISED - ####
	DATE - 01/29/2026	REVISED - ####

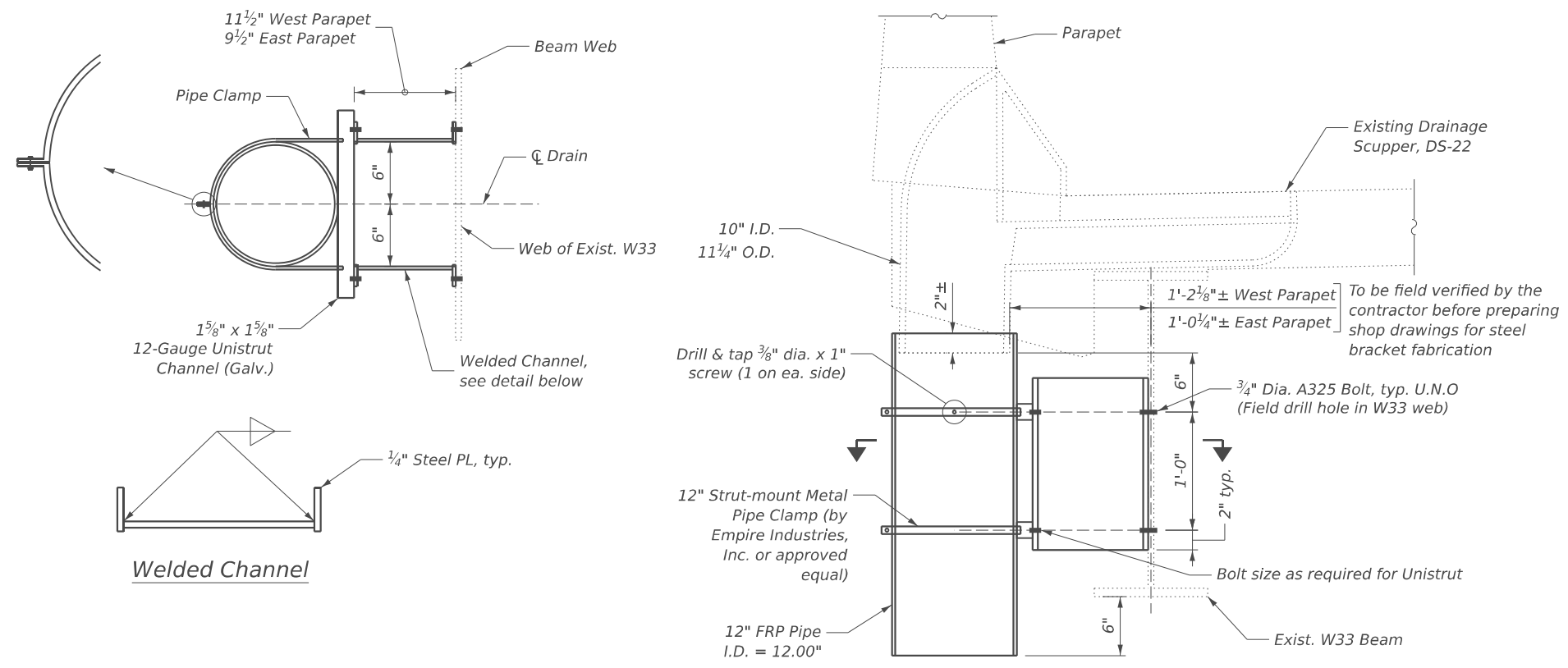
STATE OF ILLINOIS
 DEPARTMENT OF TRANSPORTATION

SLOPEWALL & SUBSTRUCTURE REPAIRS
STRUCTURE NO. 006-0084

SHEET S-9 OF S-11 SHEETS

F.A.S. RTE.	SECTION	COUNTY	TOTAL SHEETS	SHEET NO.
2245	(22B)BRR	BUREAU	26	22
CONTRACT NO. 66R69				
ILLINOIS FED. AID PROJECT				

MODEL: Br Sheet Consultant
 FILE NAME: C:\Users\DavidPruchnik\10-4 Engineering - Documents\Projects\02-103-00 IDOT PTB 213-037 D3 Phase II V-1600 CADD DESIGN\606 Structural\WC-6_C66R69\Sheet\Page 10_Miscellaneous Repairs.dgn



Note:
All steel components to be galvanized

DRAIN EXTENSION DETAIL

BILL OF MATERIAL

Item	Unit	Total
Deck Drain Extensions	Each	2



USER NAME = Michael Nwaigbo	DESIGNED - HP	REVISED - ####
PLOT SCALE = \$SCALE\$	DRAWN - DP	REVISED - ####
PLOT DATE = 1/19/2026	CHECKED - VP	REVISED - ####
	DATE - 01/29/2026	REVISED - ####

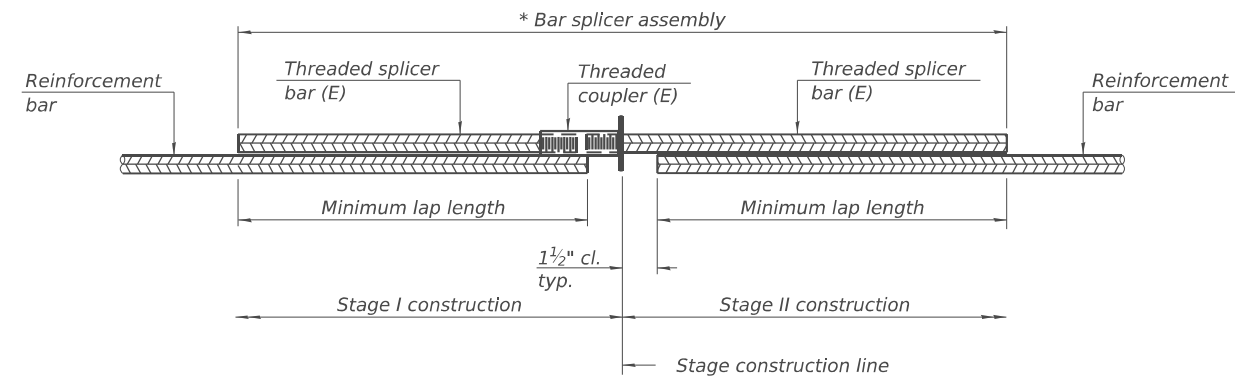
**STATE OF ILLINOIS
DEPARTMENT OF TRANSPORTATION**

**MISCELLANEOUS REPAIRS
STRUCTURE NO. 006-0084**

SHEET S-10 OF S-11 SHEETS

F.A.S. RTE.	SECTION	COUNTY	TOTAL SHEETS	SHEET NO.
2245	(22B)BRR	BUREAU	26	23
CONTRACT NO. 66R69				
ILLINOIS FED. AID PROJECT				

MODEL: Br Sheet Consultant
 FILE NAME: C:\Users\DavidPruchnik\10-4 Engineering - Documents\Projects\02-103-00 IDOT PTB 213-037 D3 Phase II V-1600 CADD DESIGN\606 Structural\WC-6_C66R69\Sheet\Page 11_Bar Splicer Assembly Details.dgn

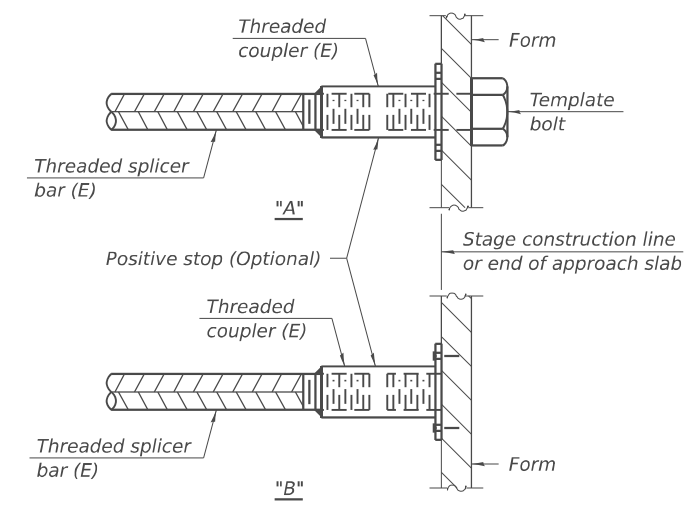


STANDARD BAR SPLICER ASSEMBLY PLAN
 Only bar splicer assemblies as presented on the approved QPL list may be used.

Threaded splicer bar length = min. lap length + 1 1/2" + thread length

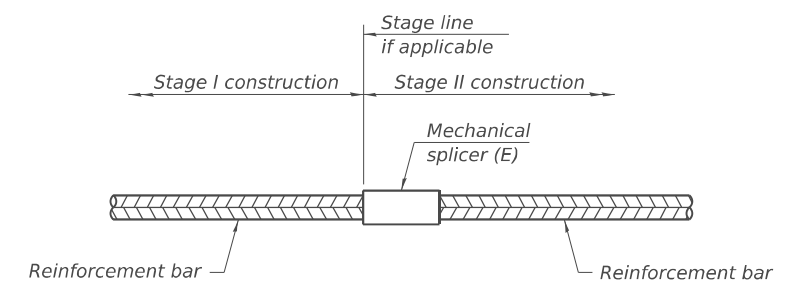
* Epoxy not required on Bar Splicer Assembly components used in conjunction with black bars.

Location	Bar size	No. assemblies required	Minimum lap length
N. Abut. - Deck	#5	11	3'-10"
N. Abut. - (Block out)	#6	4	4'-5"
S. Abut. - Deck	#5	11	3'-10"
S. Abut. - (Block out)	#6	4	4'-5"



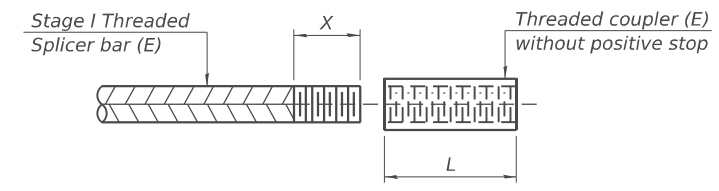
INSTALLATION AND SETTING METHODS

"A" : Set bar splicer assembly by means of a template bolt.
 "B" : Set bar splicer assembly by nailing to wood forms or cementing to steel forms.
 (E) : Indicates epoxy coating.



STANDARD MECHANICAL SPLICER

Location	Bar size	No. assemblies required



THREADING OF ASSEMBLIES

The threaded length "X" shall be no more than L/2. The bar should be tightened until 0-1 thread(s) is/are exposed.

Notes:
 Splicer bars shall be deformed with threaded ends and have a minimum 60 ksi yield strength.
 All reinforcement shall be lapped and tied to the splicer bars.
 Bar splicer assemblies shall be epoxy coated according to the requirements for reinforcement bars. See Section 508 of the Standard Specifications.
 See approved list of bar splicer assemblies and mechanical splicers for alternatives.

BSD-1

4-4-2025

USER NAME = Michael Nwaigbo	DESIGNED - HP	REVISED - ####
PLOT SCALE = \$SCALE\$	DRAWN - DP	REVISED - ####
PLOT DATE = 1/28/2026	CHECKED - VP	REVISED - ####
	DATE - 01/29/2026	REVISED - ####

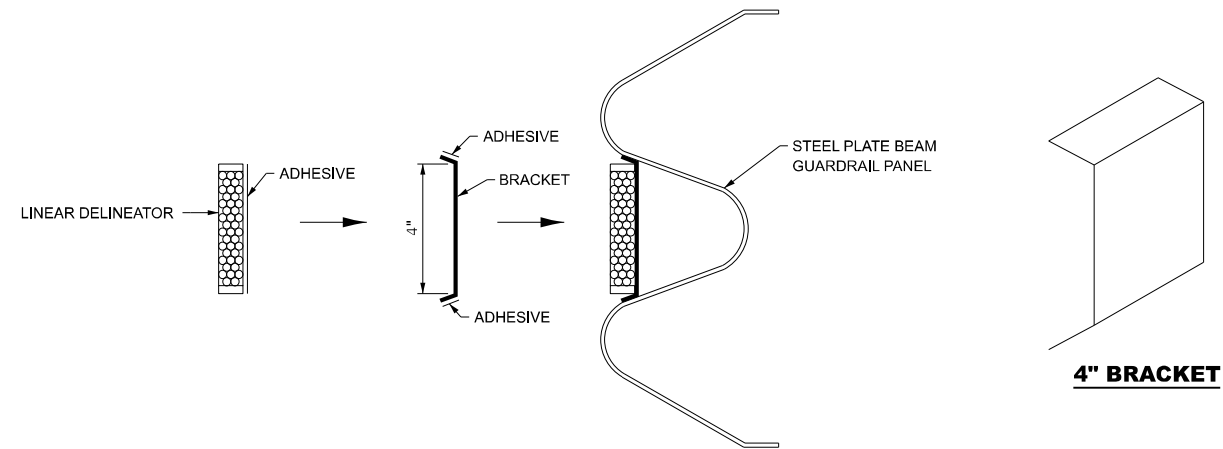
**STATE OF ILLINOIS
 DEPARTMENT OF TRANSPORTATION**

**BAR SPLICER AND MECHANICAL SPLICER DETAILS
 STRUCTURE NO. 006-0084**

SHEET S-11 OF S-11 SHEETS

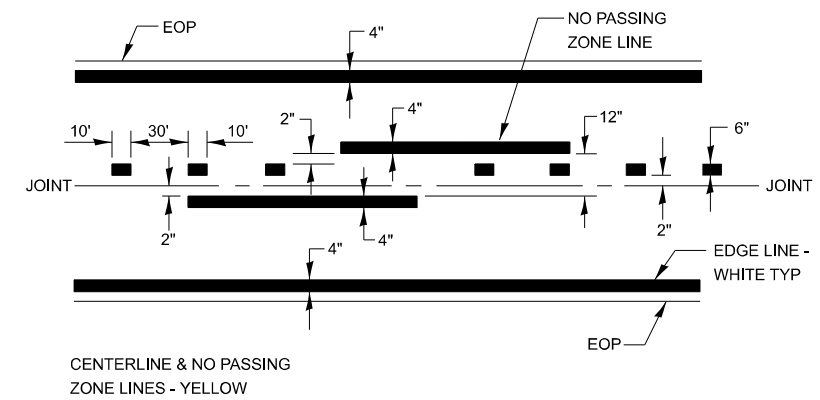
F.A.S. RTE. 2245	SECTION (22B)BRR	COUNTY BUREAU	TOTAL SHEETS 26	SHEET NO. 24
CONTRACT NO. 66R69				

ILLINOIS FED. AID PROJECT

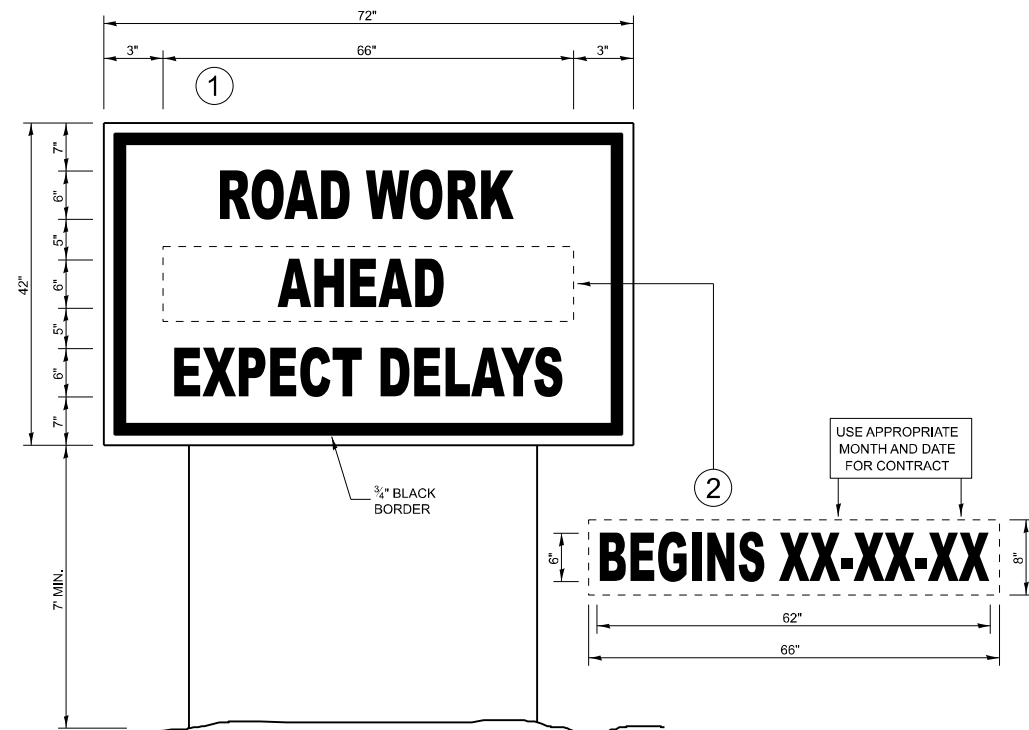


LINEAR DELINEATOR APPLICATION TO STANDARD GALVANIZED GUARDRAIL

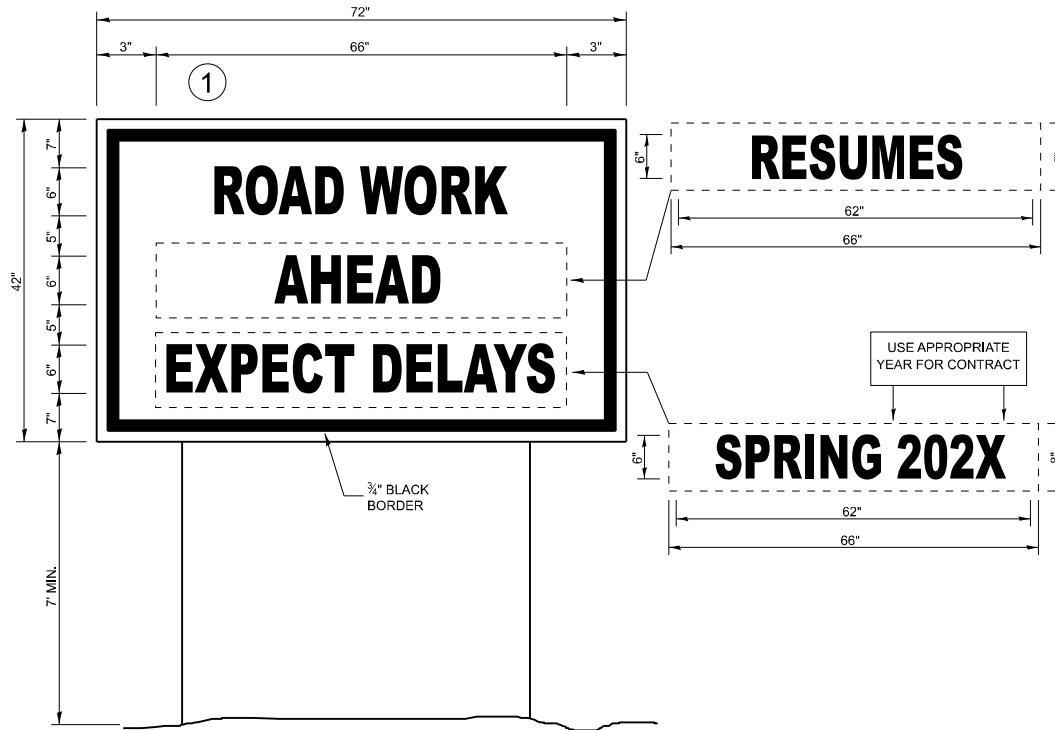
LINEATOR DELINEATOR SHALL BE APPLIED ACCORDING TO THE MANUFACTURER'S RECOMMENDATIONS



PAVEMENT MARKING



TEMPORARY INFORMATION SIGNING



WINTER SHUT DOWN SIGNING

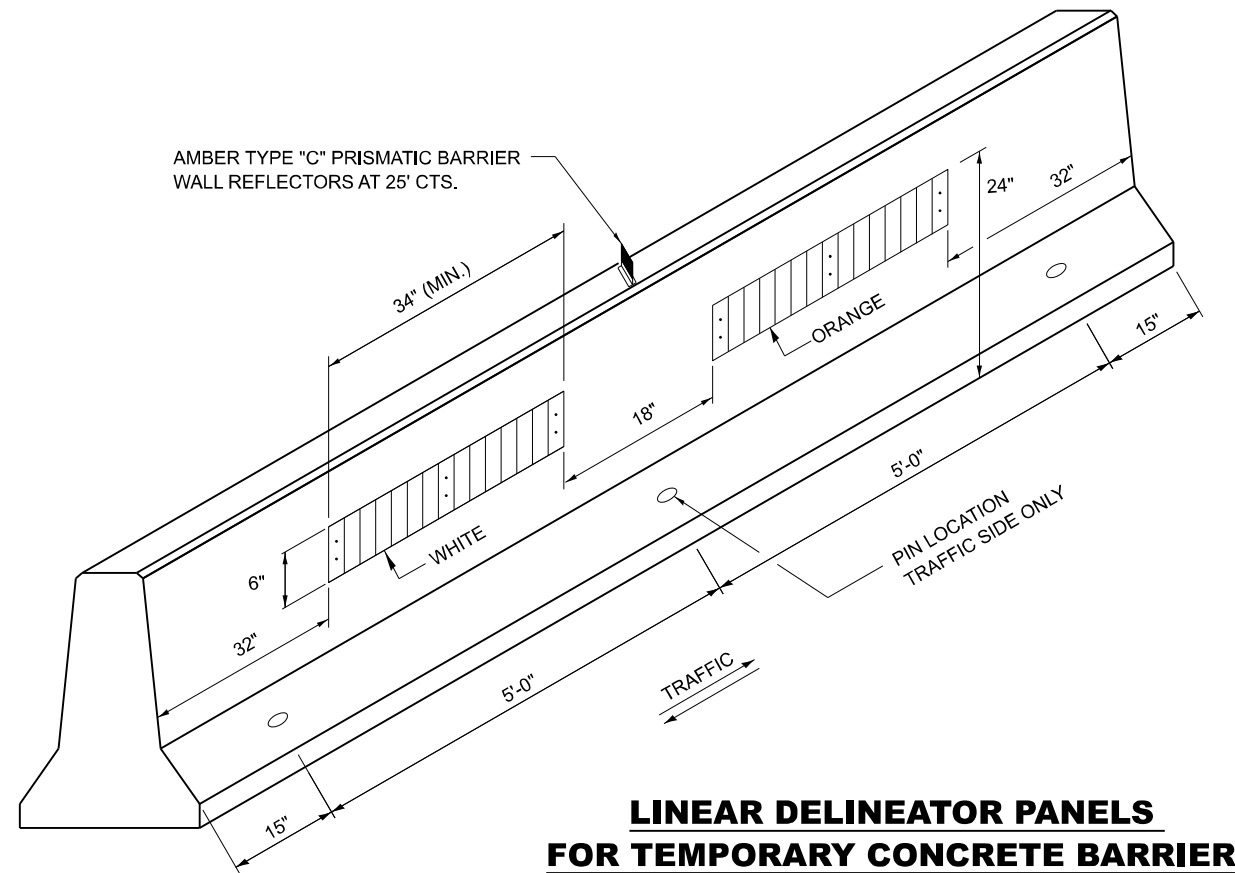
NOTES:

1. USE 6" D BLACK LETTERING ON FLOURESENT ORANGE BACKGROUND.
2. ERECT SIGNS AT LOCATIONS IN ADVANCE OF THE "ROAD CONSTRUCTION AHEAD" SIGNS AS DIRECTED BY THE ENGINEER.
3. ERECT SIGN 1 WITH INSTALLED PANEL 2 A MINIMUM OF ONE WEEK PRIOR TO THE START OF THE LANE CLOSURE.
4. REMOVE PANEL 2 ON THAT DATE.
5. SEE SPECIAL PROVISION "TEMPORARY INFORMATION SIGNING" FOR ADDITIONAL INFORMATION.
6. WILL BE PAID FOR PER SQ FT AS "TEMPORARY INFORMATION SIGNING". EACH SIGN = 21 SQ FT AND THE DATE PANEL 2 WILL NOT BE MEASURED SEPARATELY FOR PAYMENT.

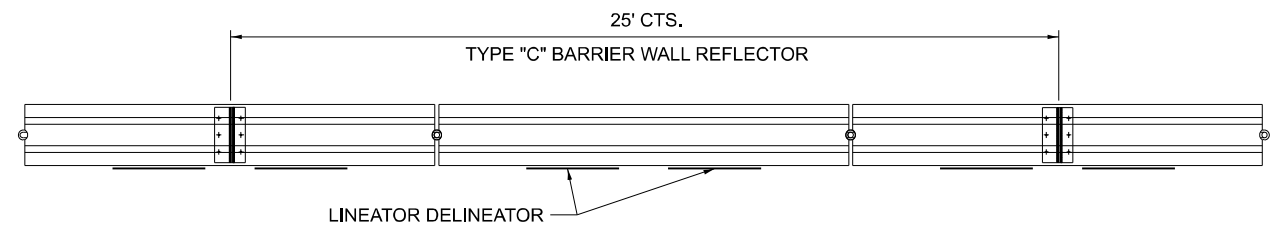
MODEL: Details [Sheet]
FILE NAME: E:\2422-6\CADD_Sheets\36669-shi-details.dgn

USER NAME = cbarh	DESIGNED - NH	REVISED -
	DRAWN - NH	REVISED -
PLOT SCALE = 0.16666633' / in.	CHECKED - RC	REVISED -
PLOT DATE = 1/9/2026	DATE - 1/2026	REVISED -

F.A.S. RTE. 2245	SECTION (22B)BRR	COUNTY	TOTAL SHEETS 26	SHEET NO. 25
CONTRACT NO. 66R69			ILLINOIS FED. AID PROJECT	

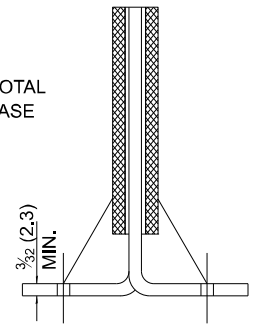
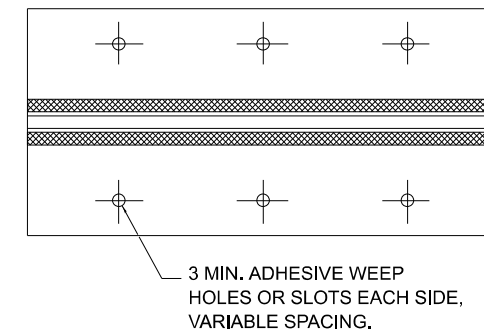
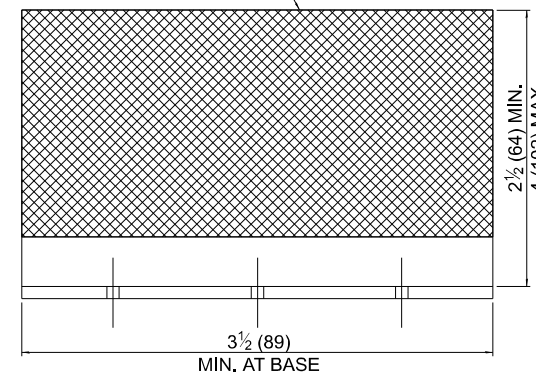


LINEAR DELINEATOR PANELS FOR TEMPORARY CONCRETE BARRIER



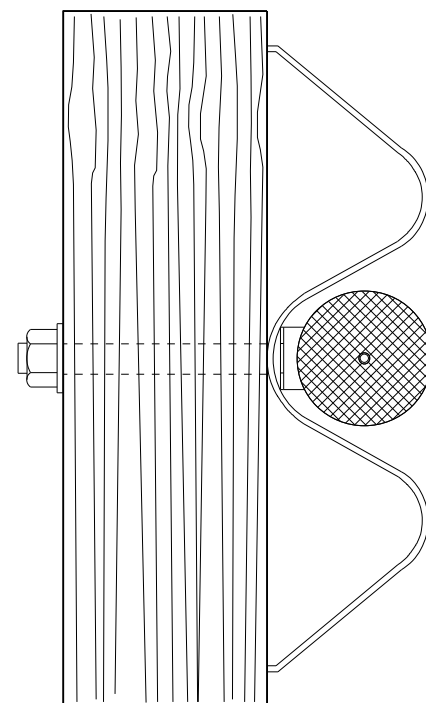
TYPE "C" REFLECTOR FOR TEMPORARY CONCRETE BARRIER

REFLECTIVE AREA, MAY BE RECTANGULAR OR SLIGHT TRAPEZOID.

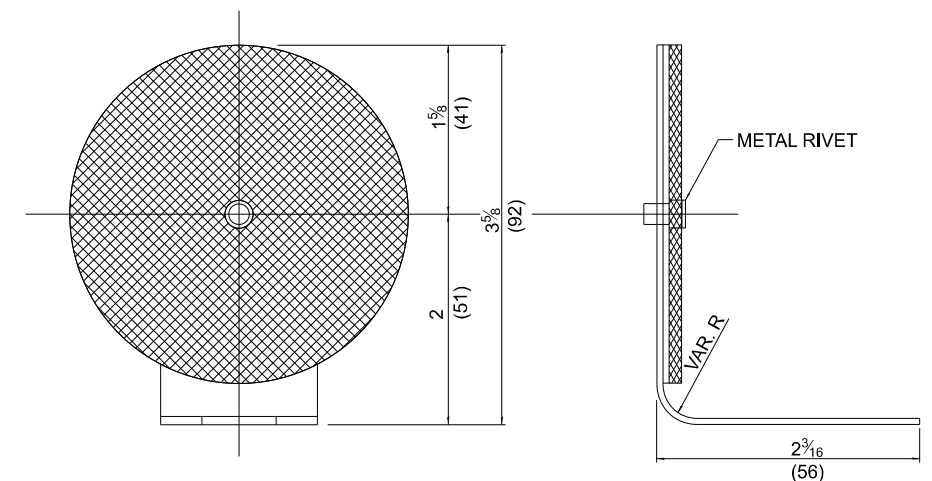
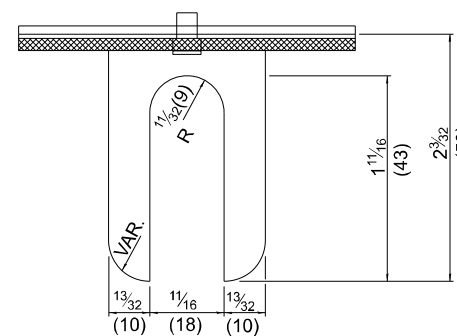


REFLECTOR TYPE C

TEMPORARY CONCRETE BARRAIER WALL



TYPICAL MOUNTING DETAIL FOR GUARDRAIL TYPE "A" REFLECTOR



REFLECTOR TYPE A

(MONODIRECTIONAL SHOWN)
STEEL PLATE BEAM GUARDRAIL

MODEL: Default
FILE NAME: E:\222-6\CADD_Sheets\366669-shr-detail-GUARDRAIL-BARRIER WALL DELINEATION.dgn

USER NAME = 14nho	DESIGNED - RW	REVISED -
	DRAWN - RW	REVISED -
	CHECKED - YP	REVISED -
PLOT DATE = 12/2/2025	DATE - 6/7/2024	REVISED -

STATE OF ILLINOIS
DEPARTMENT OF TRANSPORTATION

IL 29 OVER BIG BUREAU CREEK
GUARDRAIL / BARRIER WALL DELINEATION DETAILS

SCALE: N.T.S. SHEET 1 OF 1 SHEETS STA. TO STA.

F.A.S. RTE.	SECTION	COUNTY	TOTAL SHEETS	SHEET NO.
2245	(22B)BRR	BUREAU	26	26
CONTRACT NO. 66R69				
ILLINOIS FED. AID PROJECT				