

STATE OF ILLINOIS
DEPARTMENT OF TRANSPORTATION

| F.A.I. RTE. | SECTION | COUNTY | TOTAL SHEETS | SHEET NO. |
|-------------|----------|----------|--------------------|-----------|
| 180 | (06-2)HL | BUREAU | 11 | 1 |
| | | ILLINOIS | CONTRACT NO. 66T25 | |

INDEX OF SHEETS

- 1 COVER SHEET
- 2 GENERAL NOTES, AND LEGEND
- 3 - 4 SUMMARY OF QUANTITIES
- 5 BILL OF MATERIALS
- 6 - 9 PLAN SHEETS
- 10 WIRING DIAGRAM
- 11 DETAILS

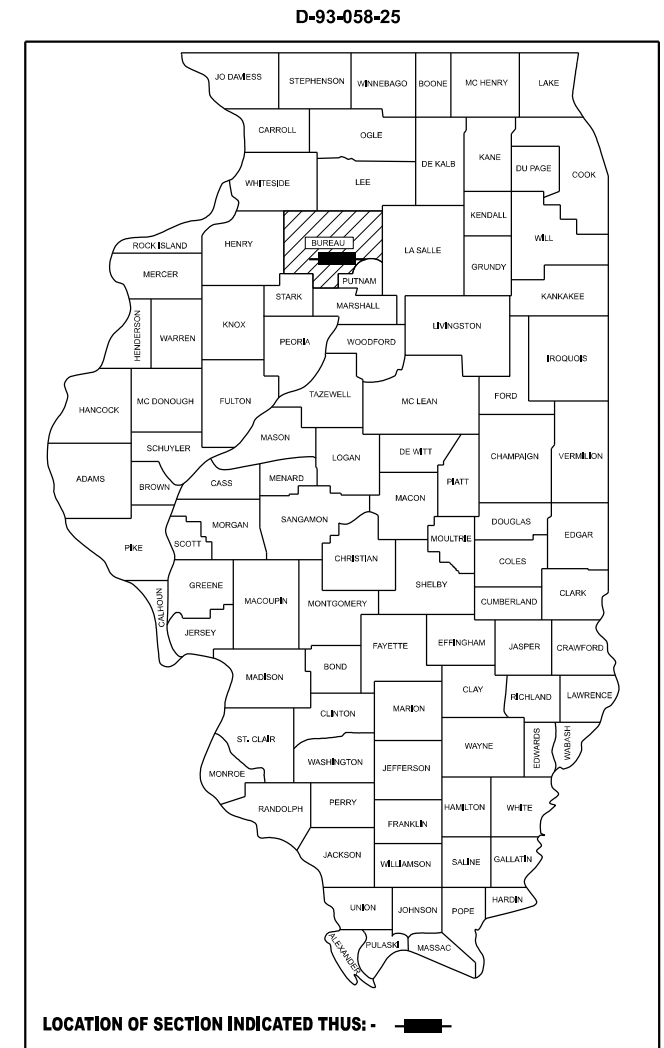
LIST OF ILLINOIS DOT HIGHWAY STANDARDS

- 000001-09 STANDARD SYMBOLS, ABBREVIATIONS AND PATTERNS
- 001006 DECIMAL OF AN INCH AND OF A FOOT
- 701001-02 OFF-ROAD OPERATIONS 2L, 2W, MORE THAN 15' AWAY
- 701006-05 OFF-ROAD OPERATIONS 2L, 2W, 15' TO 24" FROM PAVEMENT EDGE
- 701101-05 OFF-ROAD OPERATIONS, MULTILANE, 15' TO 24" FROM PAVEMENT EDGE
- 701106-02 OFF-ROAD OPERATIONS, MULTILANE, MORE THAN 15' AWAY
- 701301-04 LANE CLOSURE, 2L, 2W, SHORT TIME OPERATIONS
- 701411-09 LANE CLOSURE, MULTILANE, AT ENTRANCE OR EXIT RAMP FOR SPEEDS ≥ 45 MPH
- 701901-11 TRAFFIC CONTROL DEVICES
- 720001-01 SIGN PANEL MOUNTING DETAILS
- 805001-01 ELECTRICAL SERVICE INSTALLATION DETAILS
- 821101-03 LUMINAIRE WIRING IN POLE
- 825011-04 LIGHTING CONTROLLER, PEDESTAL MOUNTED, 240V
- 830001-03 LIGHT POLE ALUMINUM MAST ARM
- 830006-05 LIGHT POLE ALUMINUM DAVIT ARM
- 836001-05 LIGHT POLE FOUNDATION
- 838001-01 BREAKAWAY DEVICES
- 878001-11 CONCRETE FOUNDATION DETAILS

**PROPOSED
HIGHWAY PLANS**

**FAI ROUTE 180 (I 180)
SECTION (06-2)HL
PROJECT NHPP-ZKHS(194)
IL 26 (EXIT 7) & IL 26 (EXIT 12)
INTERCHANGE LIGHTING
BUREAU COUNTY**

C-93-053-26



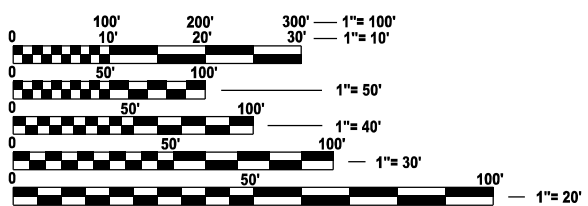
FUNCTIONAL CLASSIFICATION
INTERSTATE
2023 ADT = 3525
P.V. = 75.4% S.U. = 4.4% M.U. = 20.2%

STATE OF ILLINOIS
DEPARTMENT OF TRANSPORTATION

SUBMITTED February 20, 2026
Tasha Thompson REGIONAL ENGINEER

March 20, 2026
Scott E. Kannel ENGINEER OF DESIGN AND ENVIRONMENT

March 20, 2026
Joseph E. Kannel DIRECTOR OF HIGHWAYS PROJECT IMPLEMENTATION

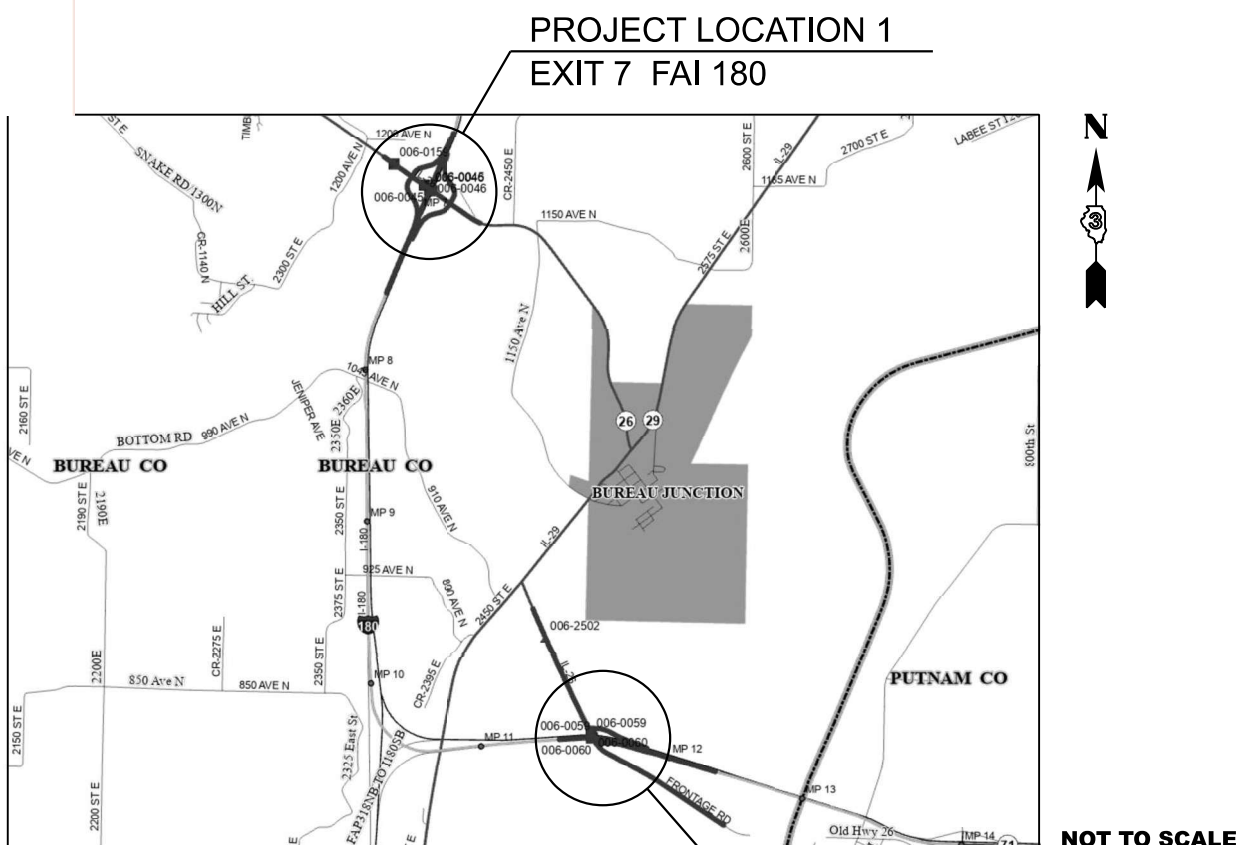


FULL SIZE PLANS HAVE BEEN PREPARED USING STANDARD ENGINEERING SCALES. REDUCED SIZED PLANS WILL NOT CONFORM TO STANDARD SCALES. IN MAKING MEASUREMENTS ON REDUCED PLANS, THE ABOVE SCALES MAY BE USED.

J.U.L.I.E.
JOINT UTILITY LOCATION INFORMATION FOR EXCAVATION
1-800-892-0123
OR 811

PROJECT ENGINEER: JOSEPH E. KANNEL, P.E.
SQUAD LEADER: STEPHENIE CARMIN

CONTRACT NO. 66T25



GROSS LENGTH = 52.80 FT. = 0.01 MILE
NET LENGTH = 52.80 FT. = 0.01 MILE

GENERAL NOTES

COMMITMENTS:

NONE

1. CONTRACTOR SHALL INSTALL LIGHT POLES AT THE LOCATIONS INDICATED ON THE PLANS. MAINTAINING ADEQUATE CLEARANCE FROM THE OVER HEAD UTILITY LINES. CONTRACTOR SHALL BE RESPONSIBLE TO VERIFY CLEARANCES PER THE NATIONAL ELECTRICAL SAFETY CODES AND/OR THE REQUIREMENTS OF THE UTILITY COMPANIES. THE CONTRACTOR SHALL NOTIFY THE ENGINEER OF ALL CONFLICTS BETWEEN PROPOSED LIGHT POLE LOCATIONS AND UTILITY LINES. THE LOCATION OF BURIED AND ABOVE GROUND UTILITIES SHOWN ARE APPROXIMATE AND ARE SHOWN FOR INFORMATION ONLY. REROUTING, DISCONNECTION, RELOCATION, PROTECTION ETC... OF ANY UTILITIES MUST BE COORDINATED BETWEEN THE CONTRACTOR, UTILITY COMPANY, AND THE OWNER. THE CONTRACTOR SHALL VERIFY THE EXACT LOCATION OF ALL UNDERGROUND UTILITIES PRIOR TO CONSTRUCTION.
2. THE CONTRACTOR IS RESPONSIBLE FOR UNCOVERING OR HAND DIGGING AROUND UTILITIES AS NECESSARY. THE COST OF THIS WORK IS TO BE INCLUDED WITH THE APPLICABLE UNDERGROUND CONDUIT OR UNIT PAY ITEM.
3. PROPOSED LIGHT POLES ARE TO BE INSTALLED AT A MINIMUM OF 15 FEET SETBACK FROM THE EDGE OF ROADWAY OR 5 FEET BEHIND THE GUARDRAIL UNLESS NOTED OTHERWISE ON THE PLANS. NO POLES TO BE INSTALLED IN THE FLOWLINE OF DITCH. POLE SETBACK TO BE INCREASED IF NECESSARY AS DIRECTED BY THE ENGINEER.
4. CONTRACTOR SHALL USE EXTREME CAUTION WHEN WORKING NEAR EXISTING OVERHEAD POWERLINES.
5. MEMBERS OF JULIE KNOWN TO BE WITHIN THE LIMITS OF THE IMPROVEMENT ARE:
COMCAST CORN BELT ENERGY FRONTIER
6. NON-MEMBERS OF JULIE KNOWN TO BE WITHIN THE LIMITS OF THE IMPROVEMENT ARE:
ILLINOIS DEPARTMENT OF TRANSPORTATION
7. THE CONTRACTOR SHALL CONTACT THE IDOT SIGNALS SECTION AT 815-434-8506 FOR ELECTRICAL UTILITY LOCATES. AFTER IDOT UTILITIES AREA LOCATED THE CONTRACTOR SHALL MAINTAIN EXISTING LIGHTING TO THE DEPARTMENT'S SATISFACTION UNTILL NEW LIGHTING IS OPERATIONAL AND SHALL BE RESPONSIBLE FOR FUTURE LOCATES DURING CONSTRUCTION.
8. A TORQUE INDICATING DEVICE AND VERIFICATION TESTING SHALL BE PROVIDED FOR INSTALLATION OF METAL FOUNDATIONS IN ACCORDANCE WITH ARTICLE 836.03(B) ARTICLE 836.03(B) OF THE STANDARD SPECIFICATIONS FOR ROAD AND BRIDGE CONSTRUCTION ADOPTED, JANUARY 1, 2022
9. ADDITIONAL CONSTRUCTION PROJECTS MAY BE UNDER CONTRACT WITHIN OR NEAR THE LIMITS OF THIS PROJECT WHEN IT IS IN FORCE. THE CONTRACTOR FOR THIS PROJECT SHALL COOPERATE WITH THE CONTRACTORS ON THE OTHER PROJECTS ACCORDING TO ARTICLE 105.08 OF THE STANDARD SPECIFICATIONS. CONTRACTS ANTICIPATED TO BE IN THE VICINITY OF THIS CONTRACT ARE:
66K06 66R02 66N78
11. ALL DAMAGE TO DEPARTMENT OWNED UNDERGROUND FACILITIES, CAUSED BY THE CONTRACTOR SHALL BE REPAIRED TO THE SATISFACTION OF THE ENGINEER AND AT NO EXPENSE TO THE DEPARTMENT. THIS SHALL INCLUDE ALL TEMPORARY REPAIRS REQUIRED TO KEEP THE FACILITY OPERATIONAL WHILE MATERIAL IS BEING OBTAINED TO MAKE PERMANENT REPAIRS.
12. SPLICING CABLE WILL NOT BE ALLOWED. ELECTRIC CABLE SHALL BE REPLACED FROM POLE TO POLE OR CONTROLLER.

MODEL: General Notes (Sheet)
FILE NAME: c:\pwworking\dotzagar\kjd1171529\0366T25\Cover sheet.dgn

| | | |
|--------------------------|------------|-----------|
| USER NAME = Joseph.Zagar | DESIGNED - | REVISED - |
| | DRAWN - | REVISED - |
| | CHECKED - | REVISED - |
| PLOT DATE = 1/7/2026 | DATE - | REVISED - |

**STATE OF ILLINOIS
DEPARTMENT OF TRANSPORTATION**

**GENERAL NOTES &
LEGEND**

SCALE: SHEET 1 OF SHEETS STA. TO STA.

| F.A.I RTE. | SECTION | COUNTY | TOTAL SHEETS | SHEET NO. |
|--------------------|----------|----------|------------------|-----------|
| 180 | (06-2)HL | BUREAU | 11 | 2 |
| CONTRACT NO. 66T25 | | | | |
| | | ILLINOIS | FED. AID PROJECT | |

90% FED
10% STATE

| |
|-----------------------------------|
| CONSTR. CODE |
| BUREAU FAI 180 |
| HIGHWAY LIGHTING 0021 RURAL |

| CODE NO. | ITEM | UNIT | TOTAL QUANTITY | |
|----------|---|--------|----------------|------|
| 67100100 | MOBILIZATION | L SUM | 1 | 1 |
| 70100420 | TRAFFIC CONTROL AND PROTECTION, STANDARD 701411 | EACH | 4 | 4 |
| 70107025 | CHANGEABLE MESSAGE SIGN | CAL DA | 117 | 117 |
| 80400100 | ELECTRIC SERVICE INSTALLATION | EACH | 2 | 2 |
| 81028750 | UNDERGROUND CONDUIT, COILABLE NONMETALLIC CONDUIT, 2" DIA. | FOOT | 590 | 590 |
| 81603035 | UNIT DUCT, 600V, 2-1C NO.6, 1/C NO.6 GROUND, (XLP-TYPE USE), 1" DIA. POLYETHYLENE | FOOT | 9205 | 9205 |
| 82110007 | LUMINAIRE, LED, ROADWAY, OUTPUT DESIGNATION G | EACH | 23 | 23 |
| 82500330 | LIGHTING CONTROLLER, PEDESTAL MOUNTED, 240VOLT, 60AMP | EACH | 2 | 2 |
| 83003600 | LIGHT POLE, ALUMINUM, 45 FT. M.H., 15 FT. DAVIT ARM | EACH | 23 | 23 |
| 83600355 | LIGHT POLE FOUNDATION, METAL, 15" BOLT CIRCLE, 8" X 6" | EACH | 23 | 23 |
| 83800650 | BREAKAWAY DEVICE, COUPLING WITH STAINLESS STEEL SCREEN | EACH | 92 | 92 |
| 84200600 | REMOVAL OF LIGHTING UNIT, NO SALVAGE | EACH | 2 | 2 |
| 84200605 | REMOVAL OF LIGHTING TOWER, NO SALVAGE | EACH | 7 | 7 |
| 84500110 | REMOVAL OF LIGHTING CONTROLLER | EACH | 2 | 2 |

MODEL: SOQ_1 [Sheet]
FILE NAME: c:\pw\work\pww\tdobrandon.criss@illinois.gov\1171529\03681725 SOQ.dgn

| | | |
|---------------------------|------------|-----------|
| USER NAME = Brandon.Criss | DESIGNED - | REVISED - |
| | DRAWN - | REVISED - |
| | CHECKED - | REVISED - |
| PLOT DATE = 1/7/2026 | DATE - | REVISED - |

**STATE OF ILLINOIS
DEPARTMENT OF TRANSPORTATION**

SUMMARY OF QUANTITIES

SCALE: SHEET 1 OF 2 SHEETS STA. TO STA.

| | | | | |
|--------------------|---------------------|--------|---------------------------|----------------|
| F.A.I. RTE. 180 | SECTION (06-2)HL | COUNTY | TOTAL SHEETS 11 | SHEET NO. 3 |
| CONTRACT NO. 66T25 | | | ILLINOIS FED. AID PROJECT | |

90% FED
10% STATE

| CODE NO. | ITEM | UNIT | TOTAL QUANTITY | CONSTR. CODE | |
|----------|---|-------|----------------|-----------------------|-------|
| | | | | BUREAU FAI 180 | |
| | | | | HIGHWAY LIGHTING 0021 | RURAL |
| 84500120 | REMOVAL OF ELECTRIC SERVICE INSTALLATION | EACH | 2 | 2 | |
| 84500130 | REMOVAL OF LIGHTING CONTROLLER FOUNDATION | EACH | 2 | 2 | |
| X7200061 | TEMPORARY INFORMATION SIGNING | SQ FT | 84 | 84 | |
| X8420510 | REMOVAL OF TOWER FOUNDATION | EACH | 7 | 7 | |

MODEL: SOQ_2 [Sheet]
FILE NAME: c:\p\work\kwk\tdolbrandon.criss@illinois.gov\1171529\0366T25 SOQ.dgn

| | | |
|----------------------------|------------|-----------|
| USER NAME = Brandon, Criss | DESIGNED - | REVISED - |
| | DRAWN - | REVISED - |
| | CHECKED - | REVISED - |
| PLOT DATE = 1/7/2026 | DATE - | REVISED - |

**STATE OF ILLINOIS
DEPARTMENT OF TRANSPORTATION**

SUMMARY OF QUANTITIES

SCALE: SHEET 2 OF 2 SHEETS STA. TO STA.

| F.A.I RTE. | SECTION | COUNTY | TOTAL SHEETS | SHEET NO. |
|---------------------------|----------|--------|--------------|-----------|
| 180 | (06-2)HL | BUREAU | 11 | 4 |
| CONTRACT NO. 66T25 | | | | |
| ILLINOIS FED. AID PROJECT | | | | |

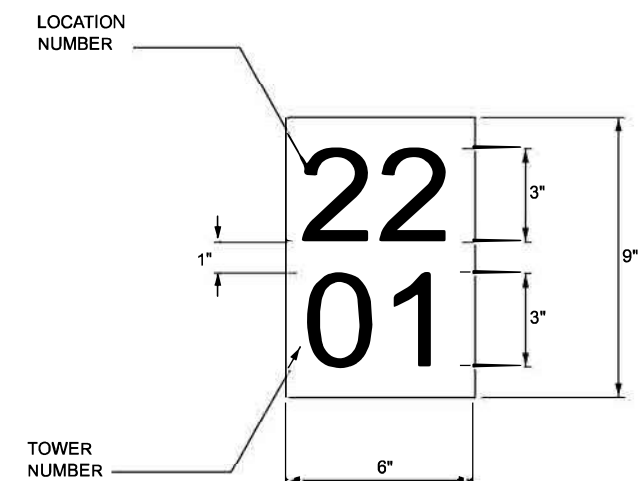
BILL OF MATERIALS

| DESCRIPTION | UNIT | QUANTITY |
|---|------|----------|
| ELECTRIC SERVICE INSTALLATION | EACH | 2 |
| UNDERGROUND CONDUIT, COILABLE NONMETALLIC, 2" DIA. | FOOT | 590 |
| UNIT DUCT, 600V, 2-1C NO.6, 1/C NO.6 GROUND, (XLP-TYPE USE), 1" DIA. POLYETHYLENE | FOOT | 9205 |
| LUMINAIRE, LED, ROADWAY, OUTPUT DESIGNATION G | EACH | 23 |
| LIGHTING CONTROLLER, PEDESTAL MOUNTED, 240VOLT, 60AMP | EACH | 2 |
| LIGHT POLE, ALUMINUM, 45 FT. M.H., 15 FT. DAVIT ARM | EACH | 23 |
| LIGHT POLE FOUNDATION, METAL, 15" BOLT CIRCLE, 8" X 6' | EACH | 23 |
| BREAKAWAY DEVICE, COUPLING WITH STAINLESS STEEL SCREEN | EACH | 92 |
| REMOVAL OF LIGHTING UNIT, NO SALVAGE | EACH | 2 |
| REMOVAL OF LIGHTING TOWER, NO SALVAGE | EACH | 7 |
| REMOVAL OF LIGHTING CONTROLLER | EACH | 2 |
| REMOVAL OF ELECTRIC SERVICE INSTALLATION | EACH | 2 |
| REMOVAL OF LIGHTING CONTROLLER FOUNDATION | EACH | 2 |
| REMOVAL OF TOWER FOUNDATION | EACH | 7 |

LIGHT POLE INFORMATION IL I-180 & IL 26

| LOCATION | | | OFFSET FROM EOP | SIDE | LOCATION NUMBER | POLE NUMBER |
|----------|---------|---------|-----------------|------|-----------------|-------------|
| EXIT | RTE | STATION | FEET | | | |
| 7 | RAMP C | 19+47 | 18 | RT | 22 | 01 |
| 7 | RAMP C | 8+85 | 17 | RT | 22 | 02 |
| 7 | RAMP C | 6+62 | 17 | RT | 22 | 03 |
| 7 | RAMP C | 4+42 | 17 | RT | 22 | 04 |
| 7 | RAMP C | 2+02 | 17 | RT | 22 | 05 |
| 7 | IL 26 | 62+06 | 18 | RT | 22 | 06 |
| 7 | RAMP A | 0+50 | 18 | LT | 22 | 07 |
| 7 | RAMP B | 19+66 | 18 | LT | 22 | 08 |
| 7 | RAMP B | 8+00 | 17 | RT | 22 | 09 |
| 7 | RAMP B | 6+00 | 17 | RT | 22 | 10 |
| 7 | RAMP B | 4+00 | 17 | RT | 22 | 11 |
| 7 | RAMP B | 2+00 | 17 | RT | 22 | 12 |
| 7 | IL 26 | 40+25 | 15 | RT | 22 | 13 |
| 7 | IL 26 | 41+66 | 18 | RT | 22 | 14 |
| 12 | EB RAMP | 0+82 | 24 | RT | 17 | 01 |
| 12 | IL 26 | 54+00 | 18 | RT | 17 | 02 |
| 12 | IL 26 | 46+87 | 22 | RT | 17 | 03 |
| 12 | WB RAMP | 22+30 | 22 | RT | 17 | 04 |
| 12 | WB RAMP | 9+20 | 17 | RT | 17 | 05 |
| 12 | WB RAMP | 7+22 | 17 | RT | 17 | 06 |
| 12 | WB RAMP | 5+22 | 17 | RT | 17 | 07 |
| 12 | WB RAMP | 3+22 | 17 | RT | 17 | 08 |
| 12 | WB RAMP | 1+22 | 17 | RT | 17 | 09 |

LIGHT TOWER IDENTIFICATION:



THE CONTRACTOR SHALL FURNISH AND INSTALL A LIGHT TOWER IDENTIFICATION ON EACH LIGHT TOWER PER SECTION 1069.06 OF THE STANDARD SPECIFICATIONS WITH THE EXCEPTIONS: THE NUMERALS WHICH SHALL BE 3" HIGH SERIES "D", BLACK, SCREENED ON SILVER-WHITE TYPE B PRESSURE SENSITIVE REFLECTIVE SHEETING CONFORMING TO THE REQUIREMENTS OF SECTION 1091 OF THE STANDARD SPECIFICATIONS FOR TRAFFIC CONTROL ITEMS OF THE STANDARD SPECIFICATION AND AS SHOWN IN THE PLAN DETAIL. THE NUMERALS SHALL CONFORM TO THE FHWA "STANDARD ALPHABETS FOR HIGHWAY SIGNS".

THIS WORK SHALL BE INCIDENTAL TO THE RESPECTIVE LIGHT TOWER PAY ITEM.

THE LIGHT TOWER IDENTIFICATION SHALL BE APPLIED TO THE SIGN BASE MATERIAL APPROXIMATELY 7" ABOVE THE ADJACENT PAVEMENT GRADE VISIBLE TO APPROACHING TRAFFIC IN ACCORDANCE WITH HIGHWAY STANDARD 720001.

MODEL: Bill of Materials-1 [Sheet]
FILE NAME: c:\p\work\pav\66t25\Bill of Materials.dgn

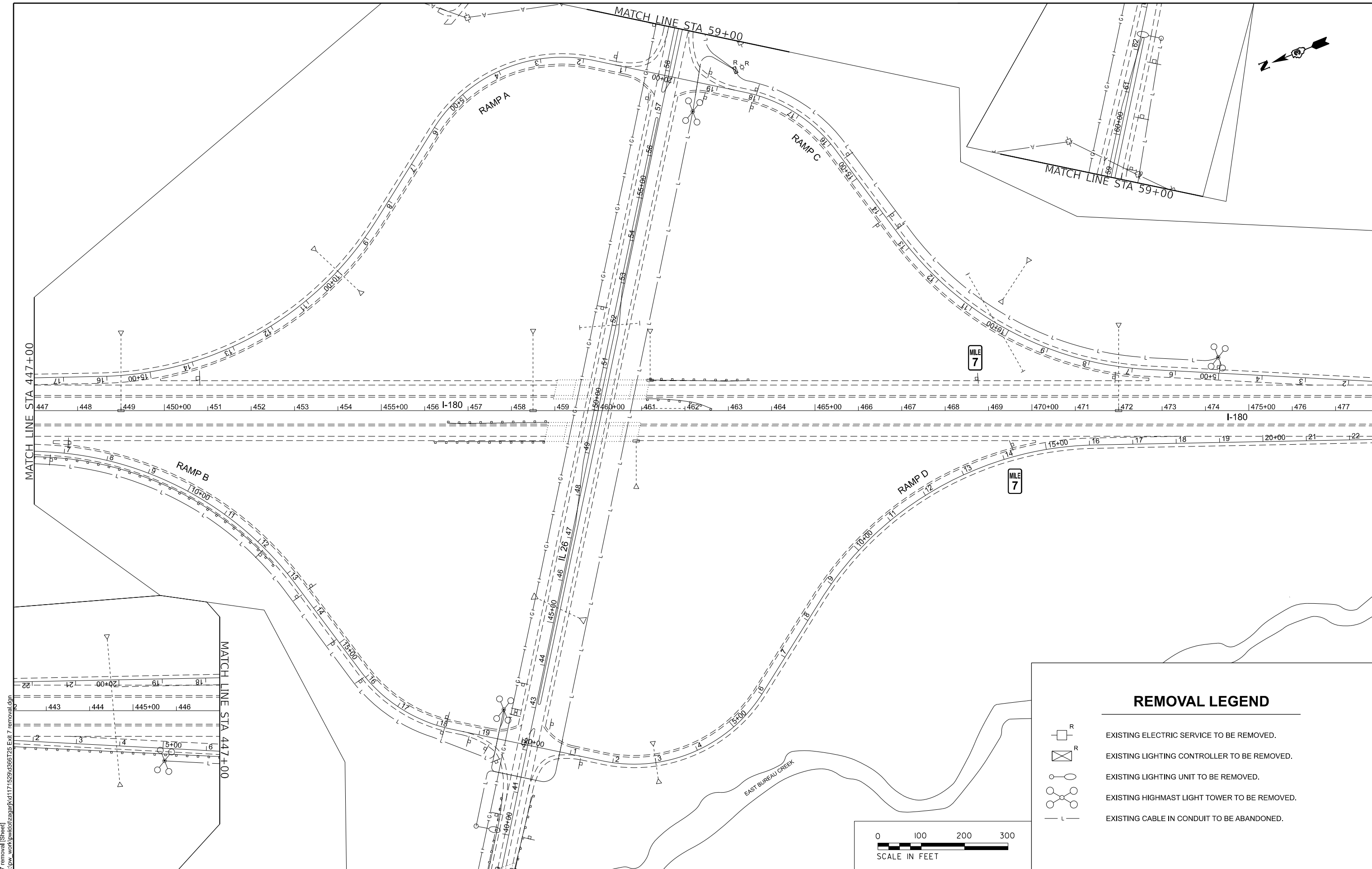
| | | |
|--------------------------|------------|-----------|
| USER NAME = Joseph.Zagar | DESIGNED - | REVISED - |
| | DRAWN - | REVISED - |
| | CHECKED - | REVISED - |
| PLOT DATE = 1/7/2026 | DATE - | REVISED - |

**STATE OF ILLINOIS
DEPARTMENT OF TRANSPORTATION**

BILL OF MATERIALS

SCALE: SHEET 1 OF SHEETS STA. TO STA.

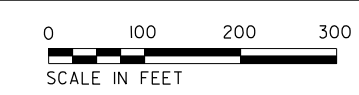
| F.A.I RTE | SECTION | COUNTY | TOTAL SHEETS | SHEET NO. |
|-----------------------------|----------|--------|-----------------|--------------|
| 180 | (06-2)HL | BUREAU | 11 | 5 |
| CONTRACT NO. 66T25 | | | | |
| ILLINOIS FED. AID PROJECT | | | | |



MODEL: Exit 7 removal (Sheet)
 FILE NAME: c:\pwwork\jzagar\k1171529\666725\Exit 7 removal.dgn

REMOVAL LEGEND

| | |
|--|--|
| | EXISTING ELECTRIC SERVICE TO BE REMOVED. |
| | EXISTING LIGHTING CONTROLLER TO BE REMOVED. |
| | EXISTING LIGHTING UNIT TO BE REMOVED. |
| | EXISTING HIGHMAST LIGHT TOWER TO BE REMOVED. |
| | EXISTING CABLE IN CONDUIT TO BE ABANDONED. |



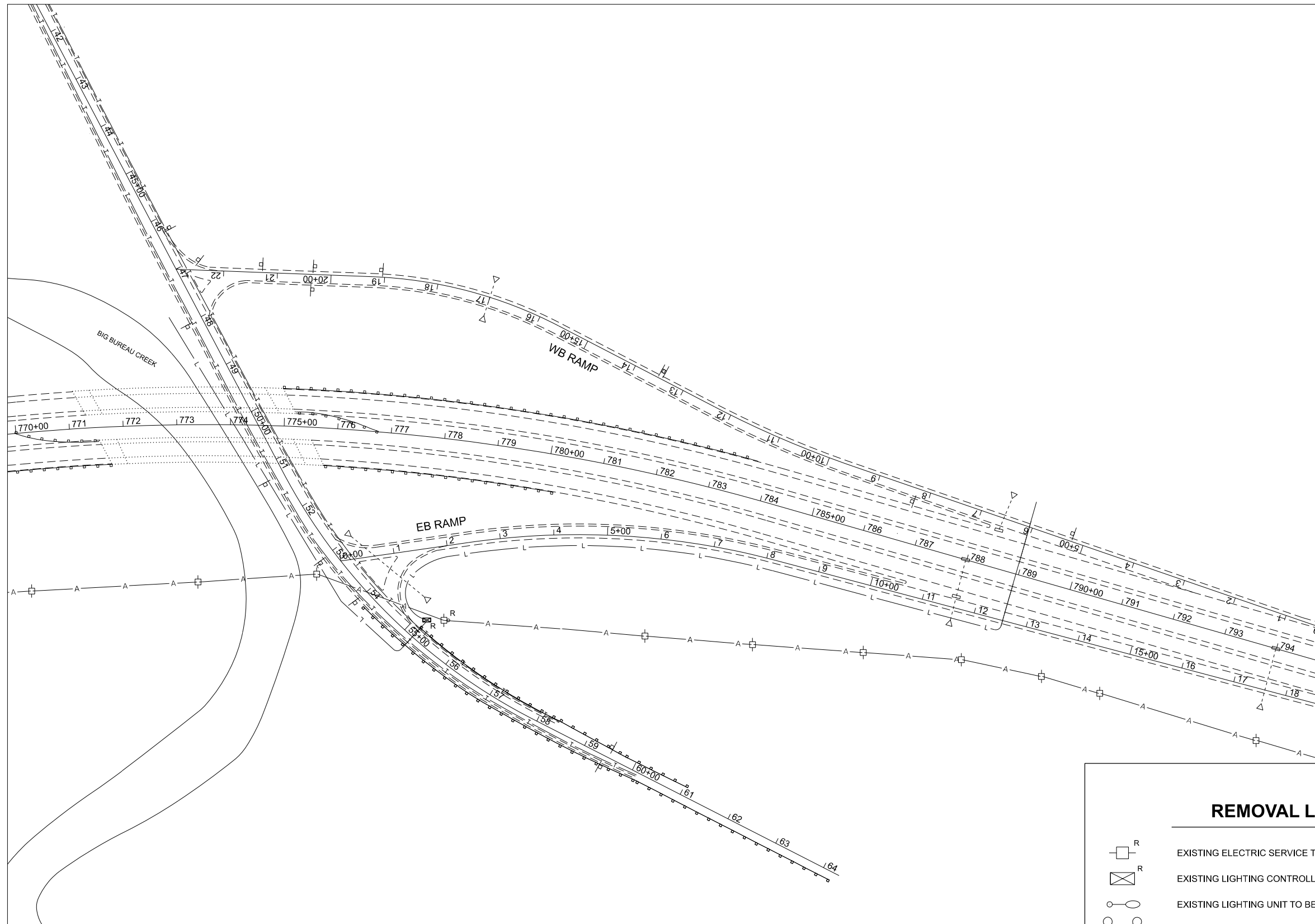
| | | |
|--------------------------|------------|-----------|
| USER NAME = Joseph.Zagar | DESIGNED - | REVISED - |
| | DRAWN - | REVISED - |
| | CHECKED - | REVISED - |
| PLOT DATE = 1/13/2026 | DATE - | REVISED - |

**STATE OF ILLINOIS
DEPARTMENT OF TRANSPORTATION**

**LIGHTING REMOVAL PLAN
I-180 AND IL-26 (EXIT 7)**

SCALE: SHEET 1 OF 4 SHEETS STA. TO STA.

| | | | | |
|---------------------------|----------|--------|--------------|-----------|
| F.A.I. RTE. | SECTION | COUNTY | TOTAL SHEETS | SHEET NO. |
| 180 | (06-2)HL | BUREAU | 6 | 6 |
| CONTRACT NO. 66T25 | | | | |
| ILLINOIS FED. AID PROJECT | | | | |



REMOVAL LEGEND

- EXISTING ELECTRIC SERVICE TO BE REMOVED.
- EXISTING LIGHTING CONTROLLER TO BE REMOVED.
- EXISTING LIGHTING UNIT TO BE REMOVED.
- EXISTING HIGHMAST LIGHT TOWER TO BE REMOVED.
- EXISTING CABLE IN CONDUIT TO BE ABANDONED.

MODEL: Exit 12 Removal_2 (Sheet)
 FILE NAME: c:\pwworking\brandon.criss@illinois.gov\171529\rev03_66T25_Exit_12_removal.dgn

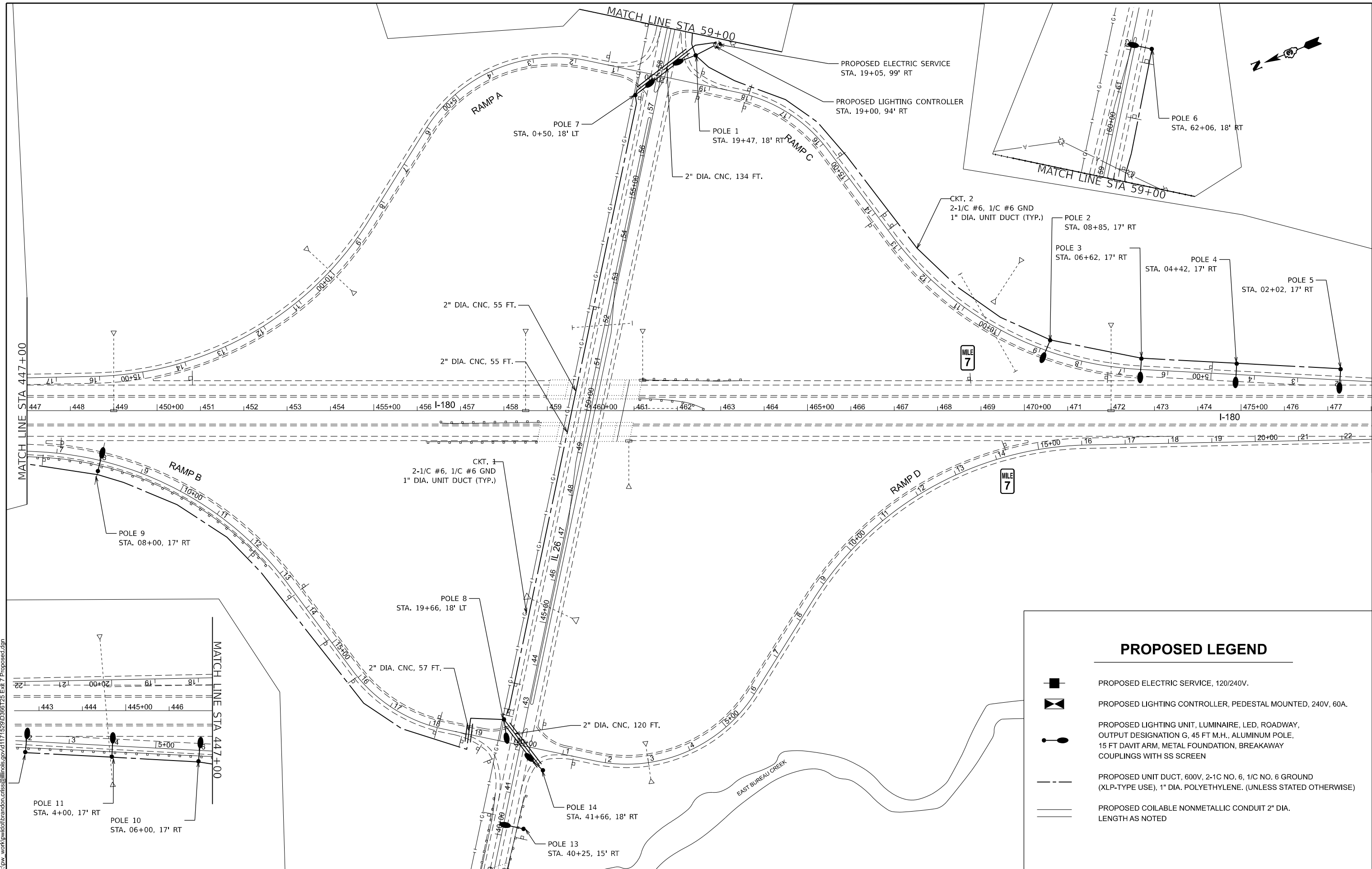
| | | | |
|---------------------------|------------|-----------|--|
| USER NAME = Brandon,Criss | DESIGNED - | REVISED - | |
| | DRAWN - | REVISED - | |
| | CHECKED - | REVISED - | |
| PLOT DATE = 2/18/2026 | DATE - | REVISED - | |

**STATE OF ILLINOIS
DEPARTMENT OF TRANSPORTATION**

**LIGHTING REMOVAL PLAN
I-180 AND IL-26 (EXIT 12)**

SCALE: SHEET 2 OF 4 SHEETS STA. TO STA.

| F.A.I RTE. | SECTION | COUNTY | TOTAL SHEETS | SHEET NO. |
|---------------------------|----------|--------|-----------------|--------------|
| 180 | (06-2)HL | BUREAU | 11 | 7 |
| CONTRACT NO. 66T25 | | | | |
| ILLINOIS FED. AID PROJECT | | | | |



MODEL: Exit 7 Proposed (Sheet)
 FILE NAME: c:\pw\work\kwick\brandon.criss@illinois.gov\1171529\0368725 Exit 7 Proposed.dgn

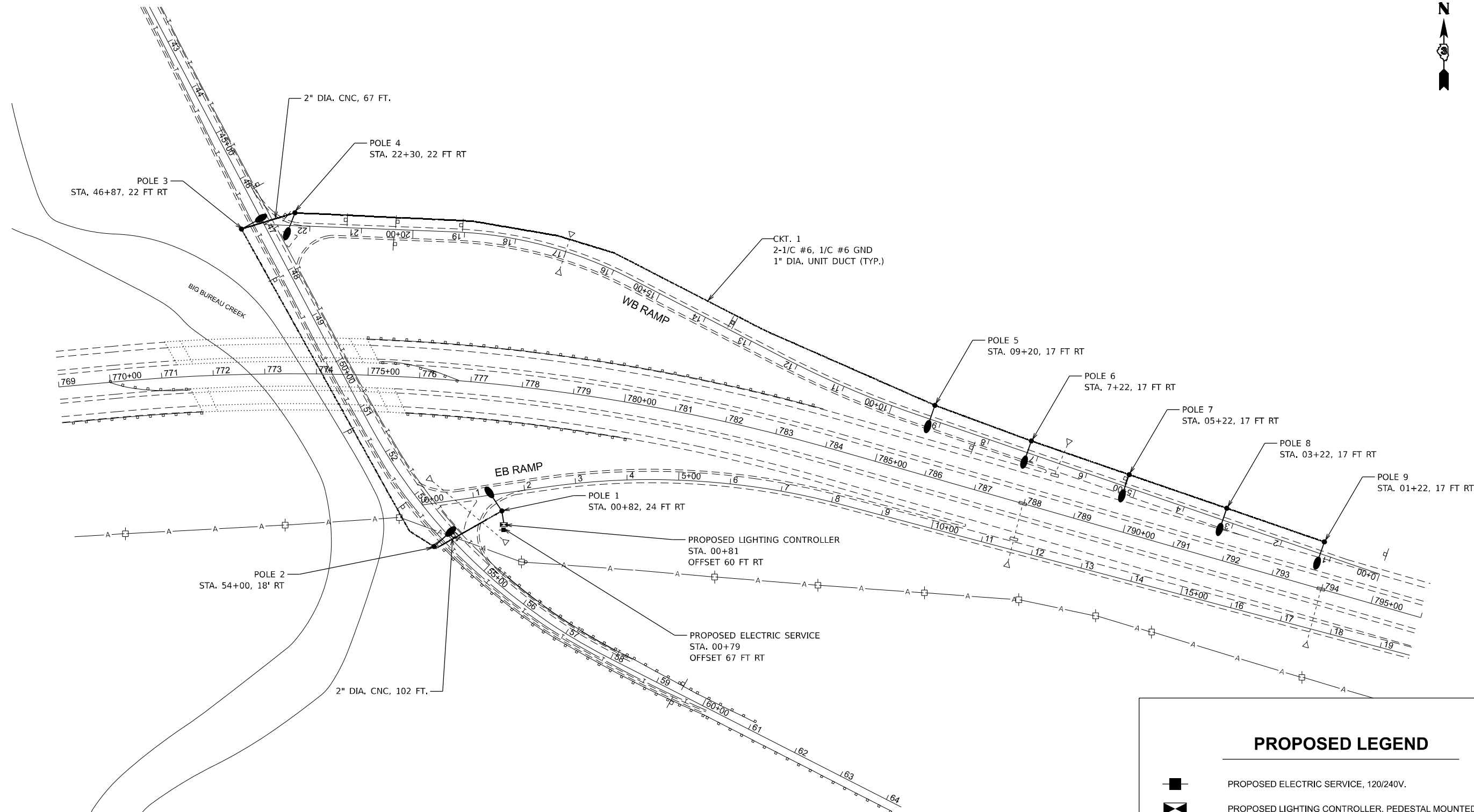
| | | |
|----------------------------|------------|-----------|
| USER NAME = Brandon, Criss | DESIGNED - | REVISED - |
| | DRAWN - | REVISED - |
| | CHECKED - | REVISED - |
| PLOT DATE = 2/18/2026 | DATE - | REVISED - |

STATE OF ILLINOIS
DEPARTMENT OF TRANSPORTATION

PROPOSED LIGHTING PLAN
I-180 AND IL-26 (EXIT 7)

SCALE: SHEET 3 OF 4 SHEETS STA. TO STA.

| | | | | |
|---------------------------|----------|--------|--------------|-----------|
| F.A.I. RTE. | SECTION | COUNTY | TOTAL SHEETS | SHEET NO. |
| 180 | (06-2)HL | BUREAU | 11 | 8 |
| CONTRACT NO. 66T25 | | | | |
| ILLINOIS FED. AID PROJECT | | | | |



| PROPOSED LEGEND | |
|-----------------|---|
| | PROPOSED ELECTRIC SERVICE, 120/240V. |
| | PROPOSED LIGHTING CONTROLLER, PEDESTAL MOUNTED, 240V, 60A. |
| | PROPOSED LIGHTING UNIT, LUMINAIRE, LED, ROADWAY, OUTPUT DESIGNATION G, 45 FT M.H., ALUMINUM POLE, 15 FT DAVIT ARM, METAL FOUNDATION, BREAKAWAY COUPLINGS WITH SS SCREEN |
| | PROPOSED UNIT DUCT, 600V, 2-1/C NO. 6, 1/C NO. 6 GROUND (XLP-TYPE USE), 1" DIA. POLYETHYLENE. (UNLESS STATED OTHERWISE) |
| | PROPOSED COILABLE NONMETALLIC CONDUIT 2" DIA. LENGTH AS NOTED |

MODEL: Exit 12 Proposed (Sheet)
 FILE NAME: c:\p\work\exit12\proposed\sheet12.dgn

| | | |
|---------------------------|------------|-----------|
| USER NAME = Brandon.Criss | DESIGNED - | REVISED - |
| | DRAWN - | REVISED - |
| | CHECKED - | REVISED - |
| PLOT DATE = 2/25/2026 | DATE - | REVISED - |

STATE OF ILLINOIS
DEPARTMENT OF TRANSPORTATION

PROPOSED LIGHTING PLAN
I-180 AND IL-26 (EXIT 12)

SCALE: SHEET 4 OF SHEETS STA. TO STA.

| F.A.I. RTE. | SECTION | COUNTY | TOTAL SHEETS | SHEET NO. |
|---------------------------|----------|--------|--------------|-----------|
| 180 | (06-2)HL | BUREAU | 11 | 9 |
| CONTRACT NO. 66T25 | | | | |
| ILLINOIS FED. AID PROJECT | | | | |

Project

| | | | |
|---------------------|-----------------|----------------|--------|
| Date | Contract Number | Section Number | County |
| 03/30/26 | 66T25 | N.A. | Bureau |
| Marked Route Number | | Municipality | |
| 180 | | N.A. | |

Roadway

| | | | | |
|-------------------------|-------------------------------|--------------|------------------------|--------------|
| Lane Width (see note 4) | Number and Direction of lanes | Median Width | Surface Classification | Q-Zero Value |
| 12 | 1 in one direction | N.A. | R3 | 0.07 |

Structure

| | | | |
|-----------------|------------|-----------------------|----------------------|
| Mounting Height | Arm Length | Set-Back (see note 1) | Number of Luminaires |
| 45 | 15 | 15 | 1 |

Luminaire

| | | | |
|--|-------------------------|----------------------|------------------|
| Description | Transverse Distribution | Lateral Distribution | |
| Roadway Luminaire Output Designation G | Type III | Medium | |
| Total Light Loss Factor (LLF) | B-U-G Rating | Shields | Dimming Protocol |
| Refer to Notes 6 and 7 | U=0 | N.A. | 0-10V |

Layout

| | |
|---------|---------------|
| Spacing | Configuration |
| 220 | Single Sided |

Performance (see notes 5 and 6)

| | | | |
|---|-------------------------------------|-------------------------------------|--|
| Average Illuminance, E_{AVE} (fc) | Uniformity Ratio, E_{AVE}/E_{MIN} | | |
| 0.6 | 3.0 | | |
| Average Luminance, L_{AVE} (cd/m ²) | Uniformity Ratio, L_{AVE}/L_{MIN} | Uniformity Ratio, L_{MAX}/L_{MIN} | Veiling Luminance Ratio, L_v/L_{AVE} |
| N.A. | N.A. | N.A. | 0.3 |

Light Trespass (see notes 5 and 7)

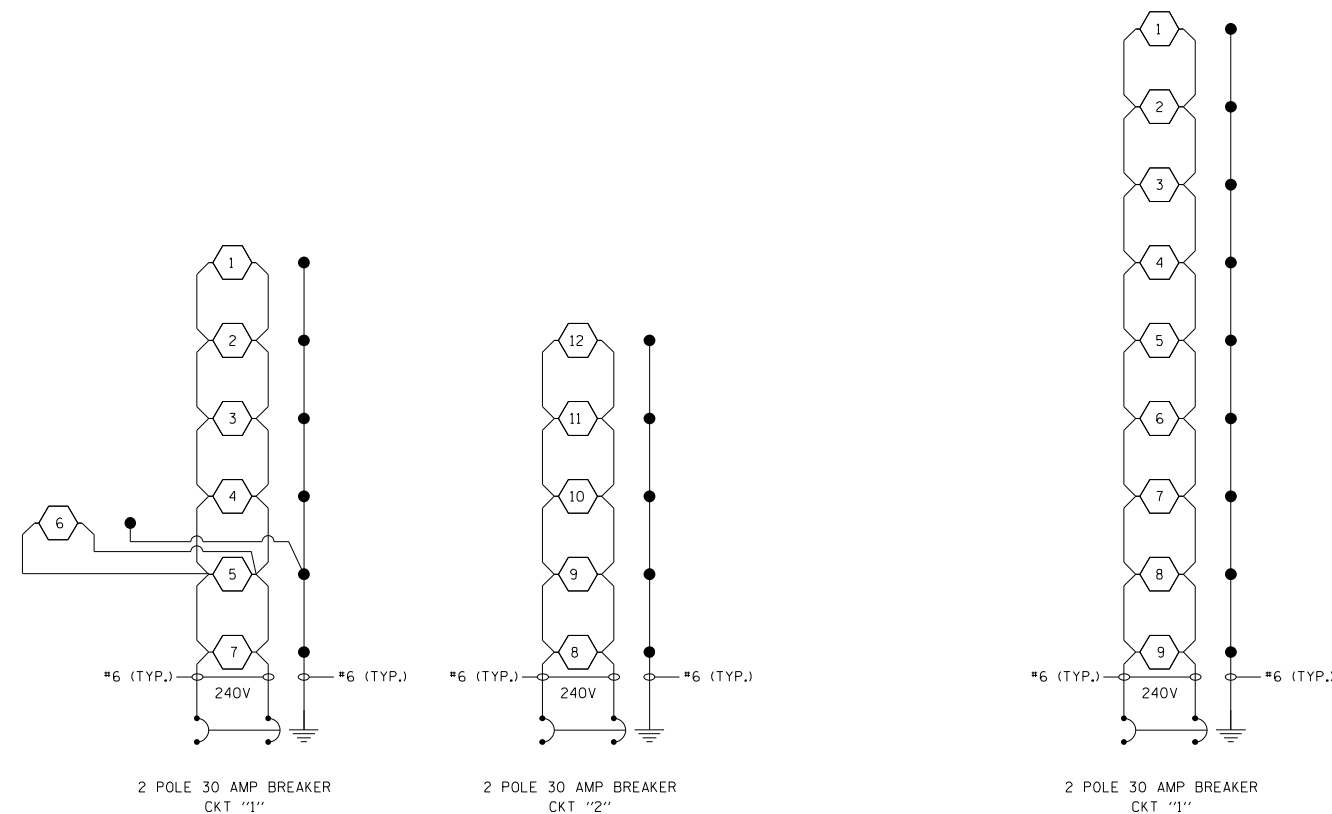
| | | |
|-------------------------------|---|---|
| Distance to ROW (behind pole) | Max. Horizontal Illuminance at ROW, E_H | Max. Vertical Illuminance at ROW, E_v |
| N.A. | N.A. | N.A. |

Notes

- Set-Back is from Edge of Pavement (white line).
- Lighting calculations shall be performed with all luminaires oriented toward and perpendicular to the roadway.
- Performance requirements shall be the minimum acceptable standards of photometric performance for the luminaire, based on the given conditions listed above.
- Lane width is the width of each individual lane, not to be confused with total roadway width.
- Compliance with performance criteria shall be held to one significant digit.
- Photometric calculations for roadways shall be performed with a total light loss factor of 0.7
- Light trespass calculations shall be performed with a total light loss factor of 1.0 and with horizontal calculations performed at grade and vertical calculations performed with calculation points located three feet above grade.
- Luminaire performance table is intended to define the luminaire and does not necessarily match any specific roadway geometry, mounting height, setback, or arm length.

Printed 03/30/26

BDE 5630 (Rev. 06/06/24)



PROPOSED ROADWAY LIGHTING CONTROLLER
I-180 AND IL-26 (EXIT 7)
PEDESTAL MOUNT, 240V

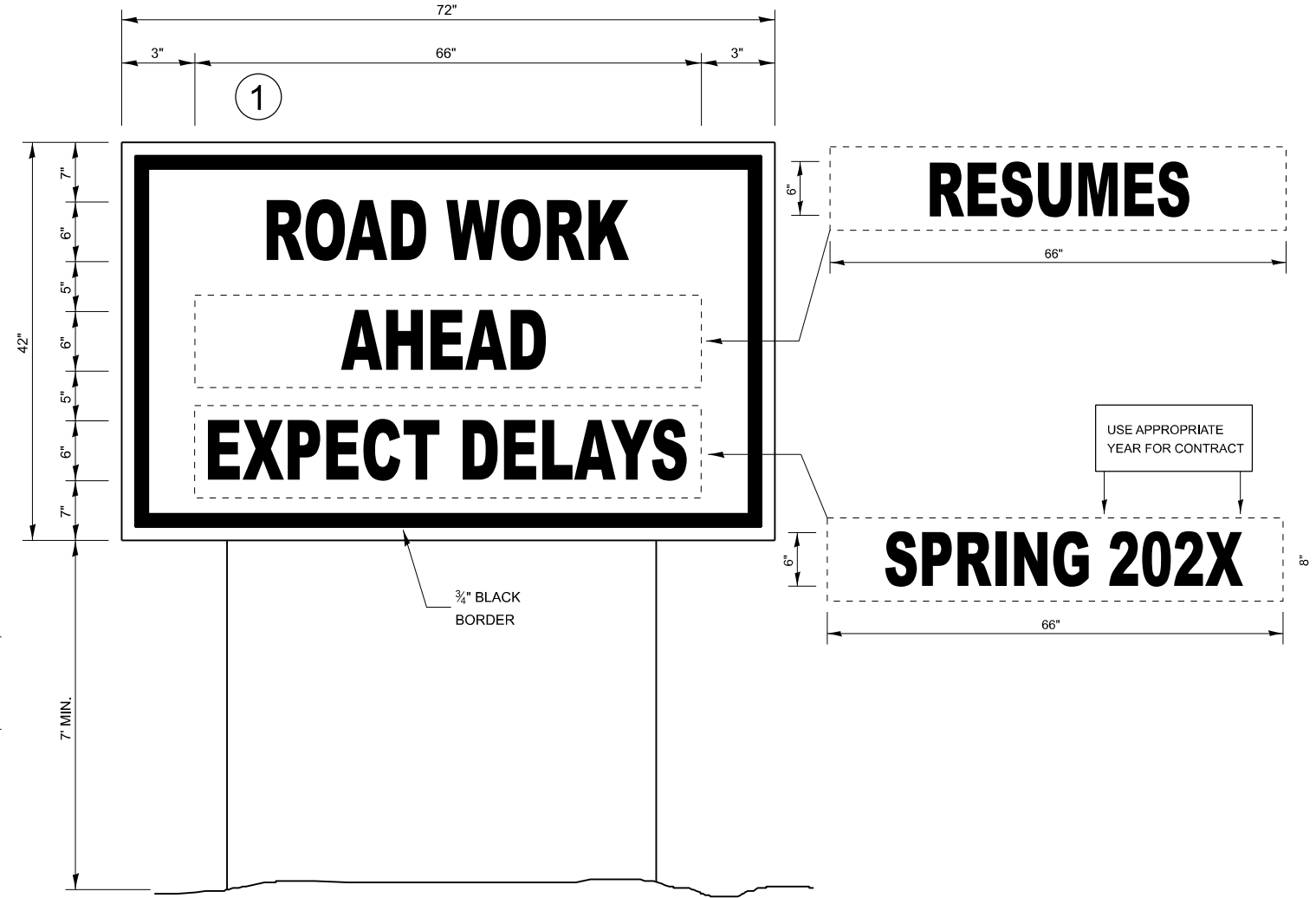
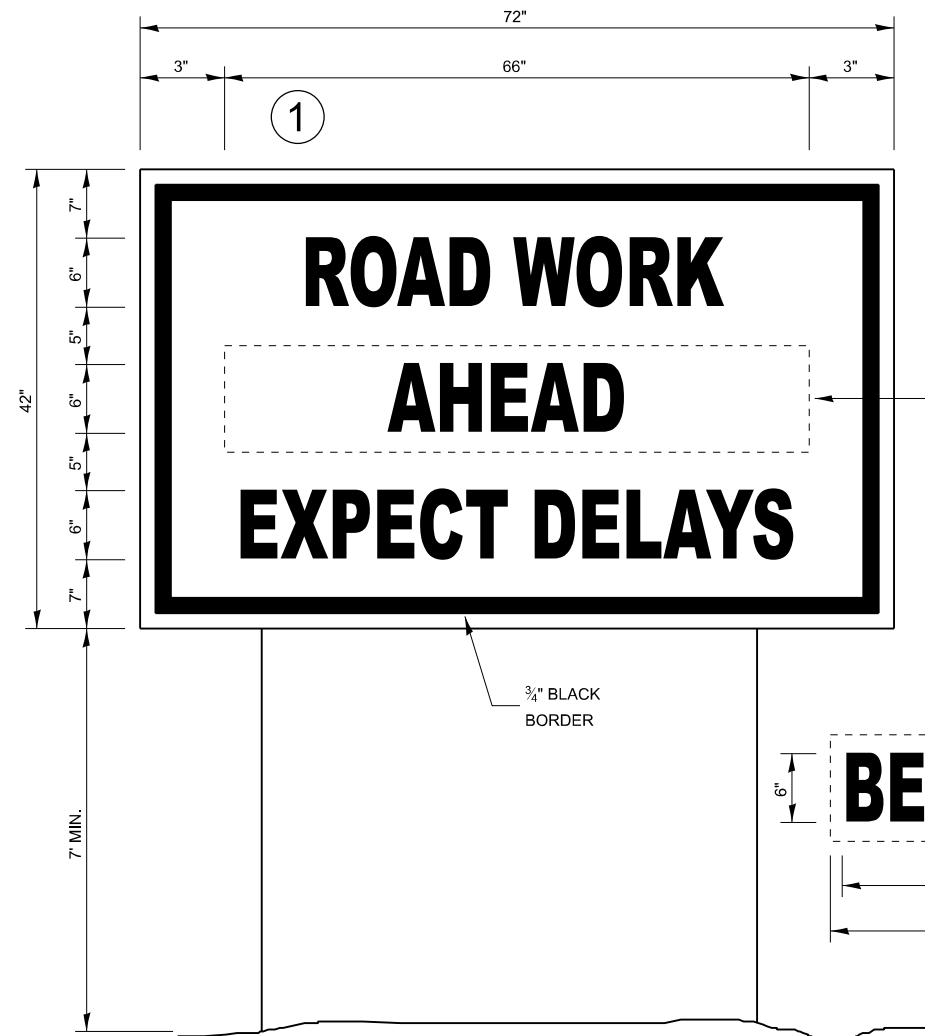
PROPOSED ROADWAY LIGHTING CONTROLLER
I-180 AND IL-26 (EXIT 12)
PEDESTAL MOUNT, 240V

LEGEND

- PROPOSED LUMINAIRE, LED, ROADWAY, OUTPUT DESIGNATION G.
- GROUND ROD.

NOTES:

- ALL NECESSARY REVISIONS TO THE WIRING SHOWN ON THIS SHEET SHALL BE MADE AT NO ADDITIONAL COST TO THE DEPARTMENT AND TO THE SATISFACTION OF THE ENGINEER.



TEMPORARY INFORMATION SIGNING

WINTER SHUT DOWN SIGNING

NOTES:

1. USE 6" D BLACK LETTERING ON FLOURESENT ORANGE BACKGROUND.
2. ERECT SIGNS AT LOCATIONS IN ADVANCE OF THE "ROAD CONSTRUCTION AHEAD" SIGNS AS DIRECTED BY THE ENGINEER.
3. ERECT SIGN ① WITH INSTALLED PANEL ② A MINIMUM OF ONE WEEK PRIOR TO THE START OF THE LANE CLOSURE.
4. REMOVE PANEL ② ON THAT DATE.
5. SEE SPECIAL PROVISION "TEMPORARY INFORMATION SIGNING" FOR ADDITIONAL INFORMATION.
6. WILL BE PAID FOR PER SQ FT AS "TEMPORARY INFORMATION SIGNING". EACH SIGN = 21 SQ FT

MODEL: Details [Sheet]
 FILE NAME: c:\pw_work\pilot\brandon.criss@illmois.gov\117152916125_Details.dgn

| | | |
|---------------------------|------------|-----------|
| USER NAME = Brandon.Criss | DESIGNED - | REVISED - |
| | DRAWN - | REVISED - |
| | CHECKED - | REVISED - |
| PLOT DATE = 1/7/2026 | DATE - | REVISED - |

STATE OF ILLINOIS
DEPARTMENT OF TRANSPORTATION

TEMPORARY INFORMATION SIGNING
WITH WINTER SHUT DOWN

SCALE: SHEET 1 OF 1 SHEETS STA. TO STA.

| | | | | |
|--------------------|---------------------|------------------|--------------------|---------------------------|
| F.A.I RTE. 180 | SECTION (06-2)HL | COUNTY BUREAU | TOTAL SHEETS 11 | SHEET NO. 11 |
| CONTRACT NO. 66T25 | | | | ILLINOIS FED. AID PROJECT |