

04-24-2026 LETTING ITEM 087

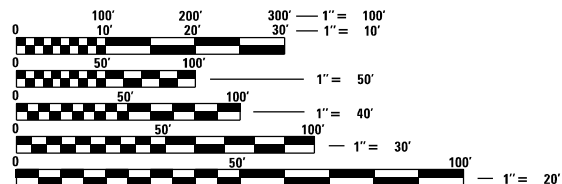
**INDEX OF SHEETS**

- 1 COVER SHEET
- 2 GENERAL NOTES
- 3 LINE DIAGRAM
- 4 SUMMARY OF QUANTITIES
- 5 TYPICALS
- 6-7 SCHEDULES
- 8 DETAILS

**LIST OF ILLINOIS DOT HIGHWAY STANDARDS**

000001-09	STANDARD SYMBOLS, ABBREVIATIONS AND PATTERNS
001006	DECIMAL OF AN INCH AND OF A FOOT
701001-02	OFF-ROAD OPERATIONS 2L, 2W, MORE THAN 15' AWAY
701006-05	OFF-ROAD OPERATIONS 2L, 2W, 15' TO 24" FROM PAVEMENT EDGE
701301-04	LANE CLOSURE, 2L, 2W, SHORT TIME OPERATIONS
701306-04	LANE CLOSURE, 2L, 2W, SLOW MOVING OPERATIONS DAY ONLY, FOR SPEEDS ≥ 45 MPH
701311-03	LANE CLOSURE, 2L, 2W, MOVING OPERATIONS - DAY ONLY
701901-11	TRAFFIC CONTROL DEVICES
780001-05	TYPICAL PAVEMENT MARKINGS

MICROFILMED \_\_\_\_\_  
 REEL NUMBER \_\_\_\_\_  
 AWARDED \_\_\_\_\_  
 RESIDENT ENGINEER \_\_\_\_\_  
 AS BUILT CHANGES WERE MADE  
 ON THE FOLLOWING SHEETS \_\_\_\_\_



FULL SIZE PLANS HAVE BEEN PREPARED USING STANDARD ENGINEERING SCALES. REDUCED SIZED PLANS WILL NOT CONFORM TO STANDARD SCALES. IN MAKING MEASUREMENTS ON REDUCED PLANS, THE ABOVE SCALES MAY BE USED.

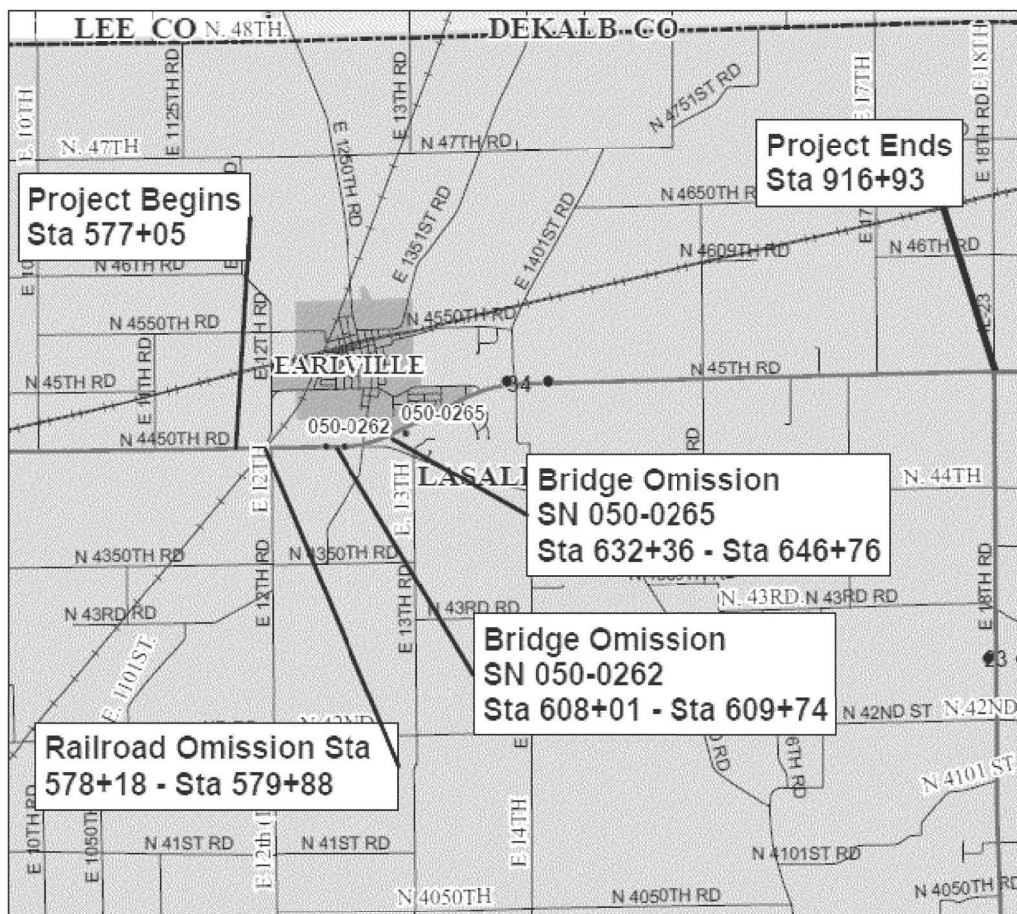
J.U.L.I.E.  
 JOINT UTILITY LOCATION INFORMATION FOR EXCAVATION  
 1-800-892-0123  
 OR 811

**PROJECT ENGINEER: KYLIE LAUTERBACH, P.E.**  
**UNIT CHIEF: DARCY MITCHELL**  
**TOWNSHIPS: EARLVILLE**  
**CONTRACT NO. 66T58**

**STATE OF ILLINOIS**  
**DEPARTMENT OF TRANSPORTATION**  
**DIVISION OF HIGHWAYS**  
**PROPOSED**  
**HIGHWAY PLANS**

**FAP ROUTE 587 (US 34)**  
**SECTION (17,18)CJS**  
**PROJECT STP-LEE8(687)**  
**CRACK AND JOINT SEALING**  
**LASALLE COUNTY**

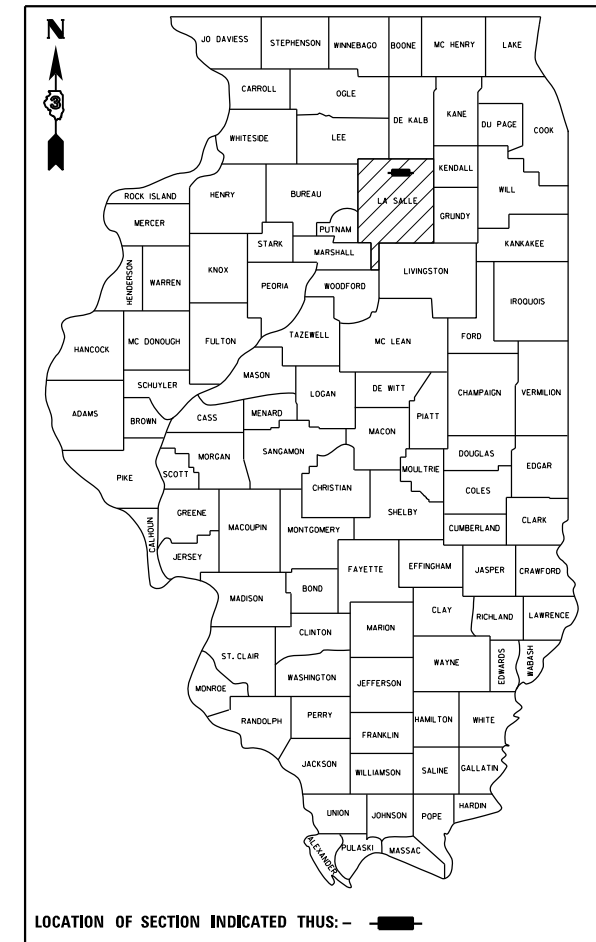
C-93-087-26



GROSS LENGTH = 33,988 FT. = 6.44 MILES  
 NET LENGTH = 33,205 FT. = 6.29 MILES

F.A.P. RTE.	SECTION	COUNTY	TOTAL SHEETS	SHEET NO.
587	(17,18)CJS	LASALLE	8	1
		ILLINOIS	CONTRACT NO. 66T58	

D-93-064-26



LOCATION OF SECTION INDICATED THUS: - [shaded box] -

**MINOR ARTERIAL (RURAL)**  
 2023 ADT = 2038  
 MU = 4.7% SU = 6.5% PV = 88.8%

STATE OF ILLINOIS  
 DEPARTMENT OF TRANSPORTATION  
 DIVISION OF HIGHWAYS

SUBMITTED January 30, 2026  
Trisha Thompson  
 DEPUTY DIRECTOR OF HIGHWAYS, REGION 5 ENGINEER

March 20, 2026  
[Signature]  
 ENGINEER OF DESIGN AND ENVIRONMENT

March 20, 2026  
[Signature]  
 DIRECTOR OF HIGHWAYS PROJECT IMPLEMENTATION

**PRINTED BY THE AUTHORITY**  
**OF THE STATE OF ILLINOIS**

**GENERAL NOTES**

PLAN DIMENSIONS AND DETAILS RELATIVE TO THE EXISTING PLANS ARE SUBJECT TO ROUTINE VARIATIONS. THE CONTRACTOR SHALL FIELD VERIFY EXISTING DIMENSIONS AND DETAILS AFFECTING NEW CONSTRUCTION AND MAKE NECESSARY APPROVED ADJUSTMENTS PRIOR TO CONSTRUCTION OF ORDERING OF MATERIALS. SUCH VARIATIONS SHALL NOT BE CAUSE FOR ADDITIONAL COMPENSATION FOR A CHANGE IN THE SCOPE OF THE WORK. HOWEVER, THE CONTRACTOR WILL BE PAID FOR THE QUANTITY FURNISHED BASED UPON THE UNIT BID PRICE.

ANY REFERENCE TO A STANDARD IN THESE PLANS SHALL BE INTERPRETED TO MEAN THE EDITION AS INDICATED BY THE SUBNUMBER SHOWN IN THE LIST OF STANDARDS OR THE COPY INCLUDED IN THESE PLANS.

THE CONTRACTOR SHALL NOT DISTURB THE EXISTING RAISED REFLECTIVE PAVEMENT MARKERS. THE CONTRACTOR SHALL REPLACE AT NO ADDITIONAL TO THE DEPARTMENT, ANY RAISED REFLECTIVE PAVEMENT MARKERS DAMAGED BY THEIR OPERATION. THE ENGINEER SHALL DETERMINE WHETHER SECTIONS OF CRACK SEALING SHOULD BE OMITTED TO AVOID DAMAGING THE RAISED REFLECTIVE PAVEMENT MARKERS IN THOSE AREAS.

ENCROACHMENT OF ANY CONTRACTOR'S EQUIPMENT OR PERSONNEL ON RAILROAD "RIGHT OF WAY" IS PROHIBITED.

THE FOLLOWING RATES OF APPLICATION HAVE BEEN USED IN CALCULATING PLAN QUANTITIES FOR CRACK FILLING:

CRACK FILLING	0.35	POUNDS / FOOT
---------------	------	---------------

COMMITMENTS

STATE OF ILLINOIS  
DEPARTMENT OF TRANSPORTATION  
DISTRICT THREE  
AS BUILT INFORMATION

STATE OF ILLINOIS  
DEPARTMENT OF TRANSPORTATION  
DISTRICT THREE

\_\_\_\_\_  
SUPERVISING CONSTRUCTION FIELD ENGINEER

PREPARED BY: \_\_\_\_\_  
DISTRICT STUDIES & PLANS ENGINEER

\_\_\_\_\_  
RESIDENT ENGINEER / TECHNICIAN

DATE: \_\_\_\_\_

START & END DATES  
OF CONSTRUCTION:

\_\_\_\_\_

EXAMINED BY: \_\_\_\_\_  
DISTRICT CONSTRUCTION ENGINEER

INSPECTORS:

\_\_\_\_\_

\_\_\_\_\_

\_\_\_\_\_  
DISTRICT MATERIALS ENGINEER

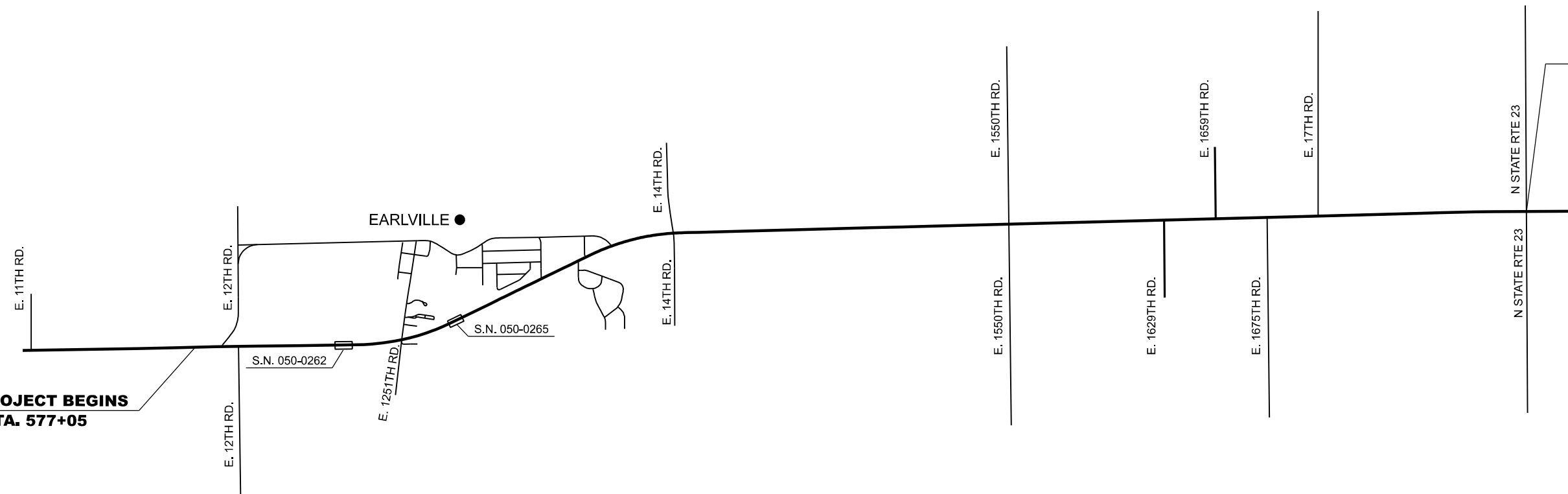
\_\_\_\_\_

\_\_\_\_\_  
DISTRICT OPERATIONS ENGINEER

FILE NAME =	USER NAME = Jessy.Jean	DESIGNED -	REVISED -	<b>STATE OF ILLINOIS DEPARTMENT OF TRANSPORTATION</b>	<b>GENERAL NOTES</b>	F.A.P. RTE.	SECTION	COUNTY	TOTAL SHEETS	SHEET NO.	
p:\idot-pw.bentley.com\PW1007\Documents	/IDOT Offices/District 3/ORD Projects/D366158/Drawings/D366158-Cover.dgn	CHECKED -	REVISED -			587	07,IBICJS	LASALLE	8	2	
	PLOT SCALE = #SCALE#	DATE -	REVISED -			<b>CONTRACT NO. 66T58</b>					
	PLOT DATE = 1/28/2026					SCALE:	SHEET	OF	SHEETS	STA.	TO STA.



**PROJECT BEGINS  
STA. 577+05**



**PROJECT ENDS  
STA 916+93**

FILE NAME =	USER NAME = Jessy.Jean	DESIGNED -	REVISED -
p:\1\dot-pw.bentley.com\PI\DOT\Documents	/IDOT Offices/District 3/ORD Projects/D366	50RAN\sta/D366158-Cover.dgn	REVISED -
	PLOT SCALE = #SCALE*	CHECKED -	REVISED -
	PLOT DATE = 1/28/2026	DATE -	REVISED -

**STATE OF ILLINOIS  
DEPARTMENT OF TRANSPORTATION**

**GENERAL NOTES**

SCALE: SHEET OF SHEETS STA. TO STA.

F.A.P. RTE.	SECTION	COUNTY	TOTAL SHEETS	SHEET NO.
587	(17,18)CJS	LASALLE	8	3
<b>CONTRACT NO. 66T58</b>				
ILLINOIS FED. AID PROJECT				

MODEL: Default  
 FILE NAME: c:\pwwork\work\pwwork\11524541D366756-SQ.dgn

CODE NO.	ITEM	UNIT	TOTAL QUANTITY	CONSTR. CODE	
				STP-RUR 80%FED-20%STATE ROADWAY	0005 RURAL
45100100	CRACK ROUTING (PAVEMENT)	FOOT	53602	53602	
45100200	CRACK FILLING	POUND	18761	18761	
67100100	MOBILIZATION	L SUM	1	1	
70100460	TRAFFIC CONTROL AND PROTECTION, STANDARD 701306	L SUM	1	1	
* 78001110	PAINT PAVEMENT MARKING - LINE 4"	FOOT	7280	7280	
* 78001130	PAINT PAVEMENT MARKING - LINE 6"	FOOT	25432	25432	
X7200061	TEMPORARY INFORMATION SIGNING	SQ FT	42	42	

\*= SPECIALTY ITEM

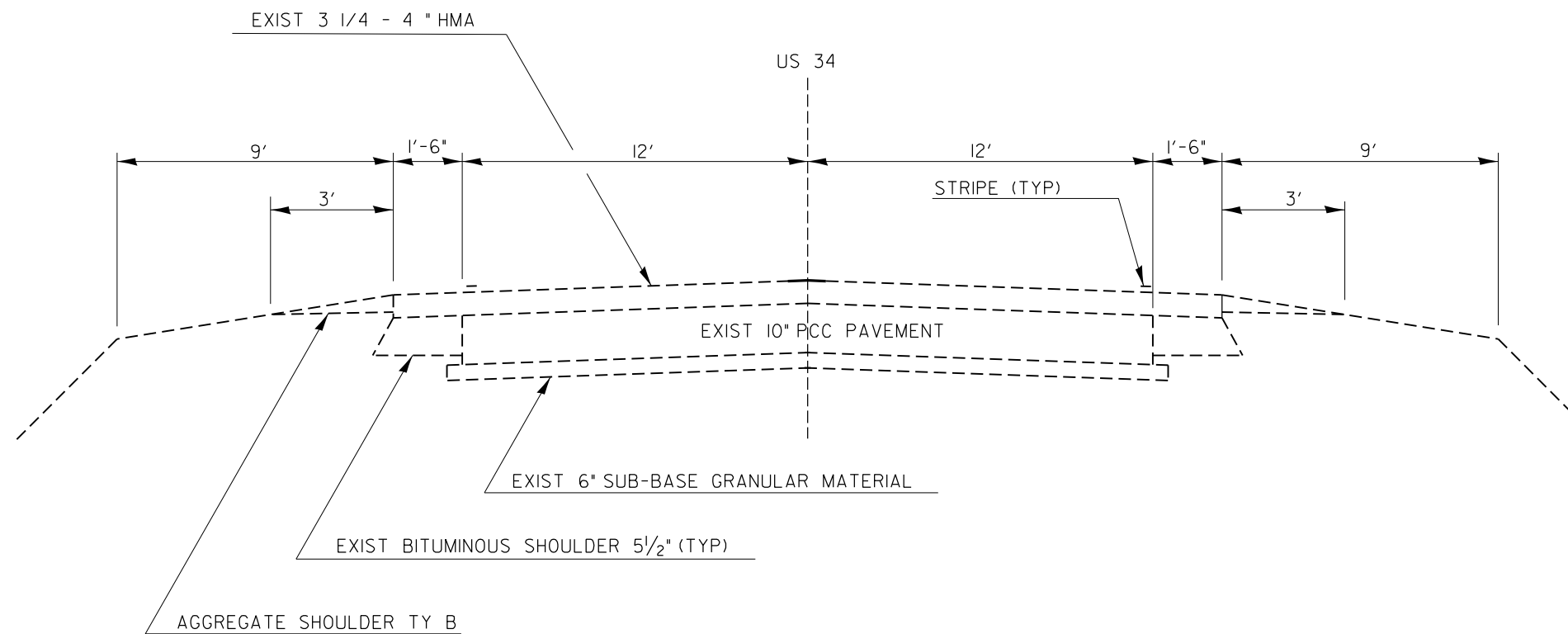
USER NAME = Jessy,Jean	DESIGNED -	REVISED -
	DRAWN -	REVISED -
	CHECKED -	REVISED -
PLOT DATE = 1/27/2026	DATE -	REVISED -

**STATE OF ILLINOIS  
 DEPARTMENT OF TRANSPORTATION**

**SUMMARY OF QUANTITIES**

SCALE: SHEET OF SHEETS STA. TO STA.

F.A. RTE. 587	SECTION (17, 18)CJS	COUNTY LASALLE	TOTAL SHEETS 8	SHEET NO. 4
CONTRACT NO. 66T58				ILLINOIS FED. AID PROJECT



**TYPICAL SECTION**

STA. 577+05 TO 916+93

OMISSIONS

RAILROAD OMISSION: STA. 578+18 TO STA. 579+88

BRIDGE OMISSION SN 050-0262: STA. 608+01 TO STA. 609+74

BRIDGE OMISSION SN 050-0265: STA. 632+36 TO STA. 646+76

MODEL: Default  
 FILE NAME: c:\pwworkspace\jean\119245410366196-Typical Sections.dgn

USER NAME = Jessie-Jean	DESIGNED -	REVISED -
	DRAWN -	REVISED -
	CHECKED -	REVISED -
PLOT DATE = 1/28/2026	DATE -	REVISED -

**STATE OF ILLINOIS  
DEPARTMENT OF TRANSPORTATION**

**TYPICAL SECTIONS**

SCALE: SHEET OF SHEETS STA. TO STA.

F.A. RTE.	SECTION	COUNTY	TOTAL SHEETS	SHEET NO.
587	(17, 18)CJS	LASALLE	8	5
CONTRACT NO. 66T58			ILLINOIS FED. RD PROJECT	

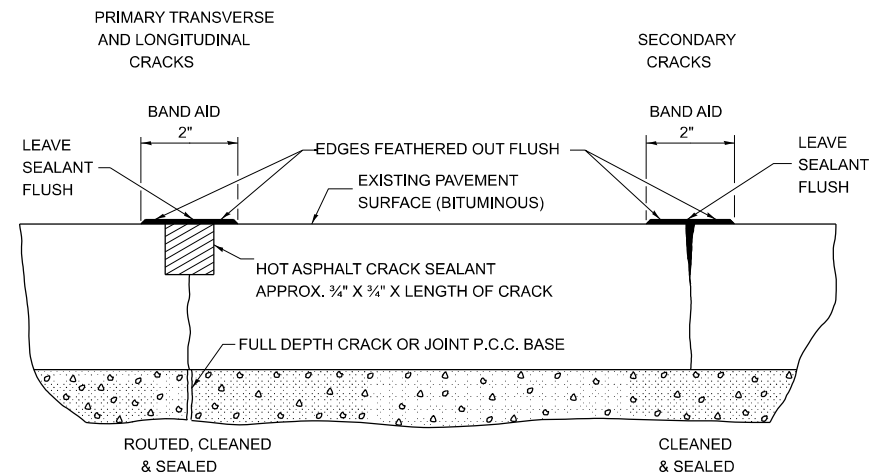
CRACK ROUTING AND FILLING US 34(FAP 587)					
LOCATION			DESCRIPTION	CRACK ROUTING (PAVEMENT) FOOT	CRACK FILLING POUND
STA	TO	STA			
<b>RURAL</b>					
577+05.	TO	578+18.	E12TH LT = STA 577+93	191	67
<b>STA 578+18 TO STA 579+88 RAILROAD OMISSION</b>					
579+88.	TO	608+01.		4463	1562
<b>STA 608+01 TO STA. 609+74 BRIDGE OMISSION - SN 050-0262</b>					
609+74.	TO	624+30.	E 1251 ST RD = STA 624+30	2329	815
624+30.	TO	632+36.		1256	440
<b>Sta 632+36 To Sta 646+76 BRIDGE OMISSION - SN 050-0265</b>					
646+76.	TO	663+16.	GREENBRIER RD = STA 663+16	2770	970
663+16.	TO	699+32.	E 14TH RD = STA 699+32	5897	2064
699+32.	TO	784+91.	E 1550TH RD = STA 784+91	13240	4634
784+91.	TO	850+93.	E 1675TH RD = STA 850+93	11214	3925
850+93.	TO	916+93.	S ROUTE 23 = STA 916+93	12242	4285
<b>TOTAL</b>				<b>53602</b>	<b>18761</b>

\*NOTE : RESIDENT SHALL VERIFY LOCATIONS  
 QUANTITIES ALSO INCLUDE SIGNIFICANT TRANSVERSE CRACKS.

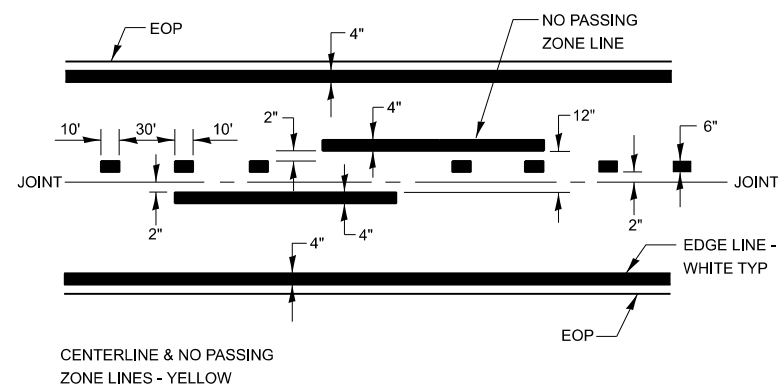
MODEL: Default  
 FILE NAME: c:\pwworkspace\jessj\11924541.D360759-Schedules.dgn

USER NAME = Jessy,Jean	DESIGNED -	REVISED -	<b>STATE OF ILLINOIS DEPARTMENT OF TRANSPORTATION</b>	<b>SCHEDULES</b>				F.A. RTE.	SECTION	COUNTY	TOTAL SHEETS	SHEET NO.		
	DRAWN -	REVISED -		SCALE:	SHEET	OF	SHEETS	STA.	TO STA.	587	(17, 18)CJS	LASALLE	8	6
	CHECKED -	REVISED -		CONTRACT NO. 66T58										
PLOT DATE = 1/27/2026	DATE -	REVISED -		ILLINOIS FED. AID PROJECT										

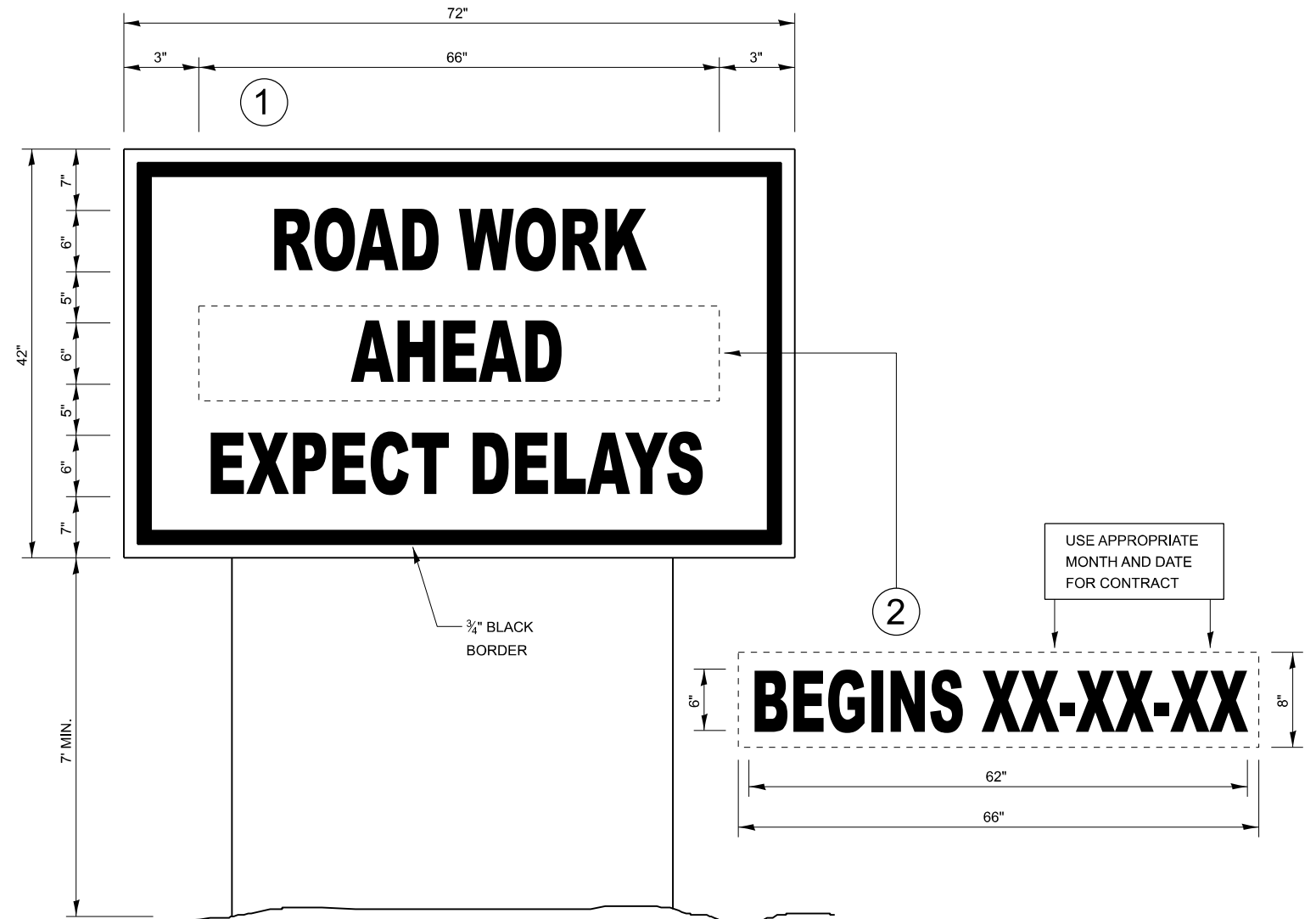




**CRACK SEALING HMA PAVEMENT**



**PAVEMENT MARKING**



**TEMPORARY INFORMATION SIGNING**

**NOTES:**

1. USE 6" D BLACK LETTERING ON FLUORESCENT ORANGE BACKGROUND.
2. ERECT SIGNS AT LOCATIONS IN ADVANCE OF THE "ROAD CONSTRUCTION AHEAD" SIGNS AS DIRECTED BY THE ENGINEER.
3. ERECT SIGN 1 WITH INSTALLED PANEL 2 A MINIMUM OF ONE WEEK PRIOR TO THE START OF THE LANE CLOSURE.
4. REMOVE PANEL 2 ON THAT DATE.
5. SEE SPECIAL PROVISION "TEMPORARY INFORMATION SIGNING" FOR ADDITIONAL INFORMATION.
6. WILL BE PAID FOR PER SQ FT AS "TEMPORARY INFORMATION SIGNING". EACH SIGN = 21 SQ FT AND THE DATE PANEL 2 WILL NOT BE MEASURED SEPARATELY FOR PAYMENT.

MODEL: Default  
FILE NAME: c:\pwworkspace\jasonjfd1192454\DWG\66T58-Details.dwg

USER NAME = Anthony.Grunstad	DESIGNED -	REVISED -
	DRAWN -	REVISED -
	CHECKED -	REVISED -
PLOT DATE = 1/28/2026	DATE -	REVISED -

**STATE OF ILLINOIS  
DEPARTMENT OF TRANSPORTATION**

**DETAILS**

SCALE: SHEET OF SHEETS STA. TO STA.

F.A. RTE.	SECTION	COUNTY	TOTAL SHEETS	SHEET NO.
587	(17, 18)CJS	LASALLE	8	8
CONTRACT NO. 66T58				
ILLINOIS FED. AID PROJECT				