

04-24-2026 LETTING ITEM 090

STATE OF ILLINOIS
DEPARTMENT OF TRANSPORTATION

**PLANS FOR PROPOSED
FEDERAL AID HIGHWAY
SURFACE TRANSPORTATION PROGRAM
ROADWAY RESURFACING**

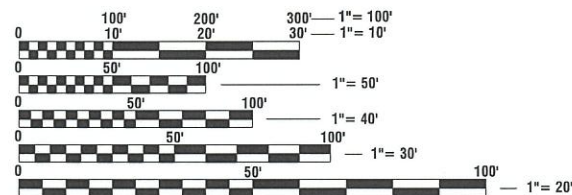
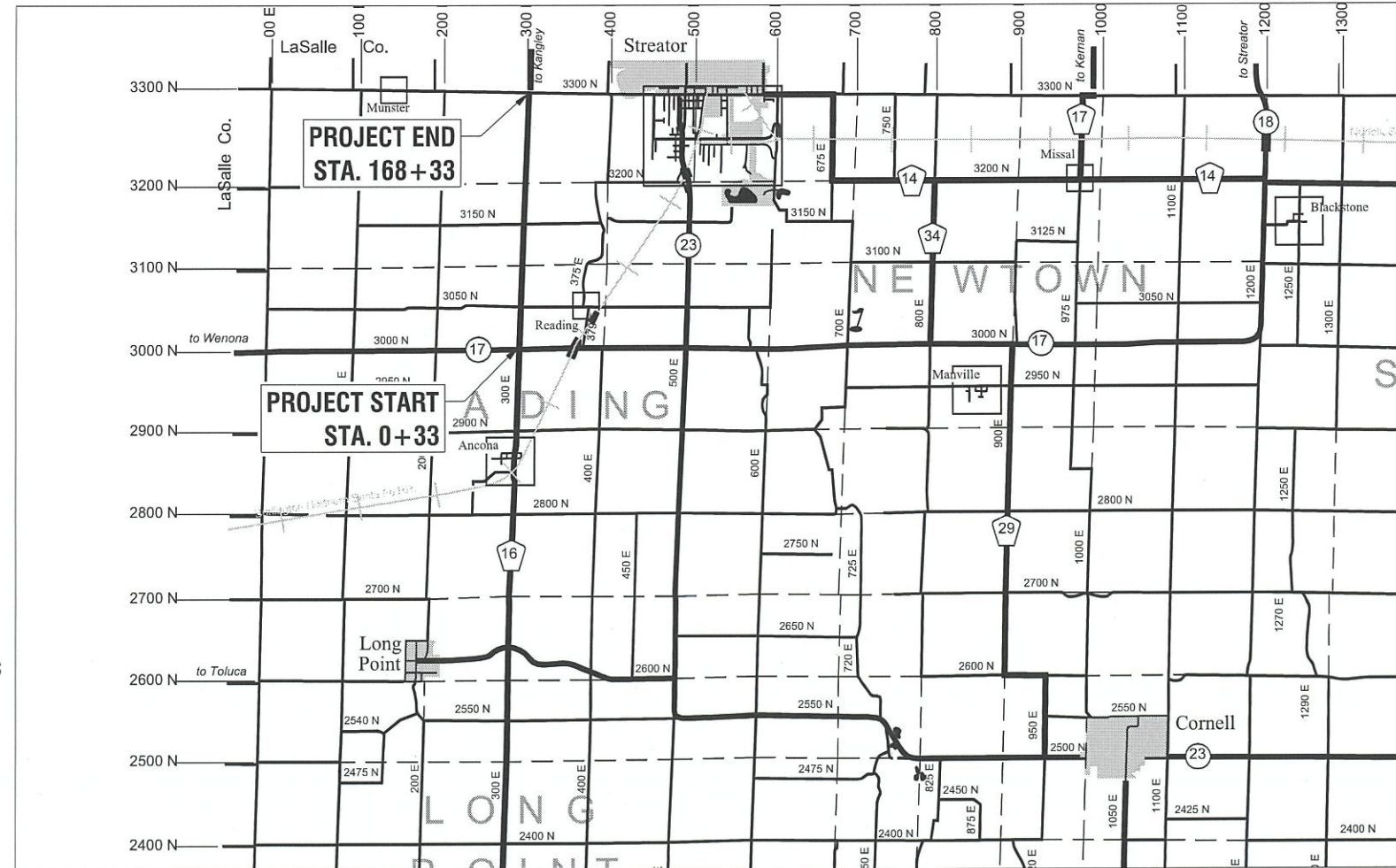
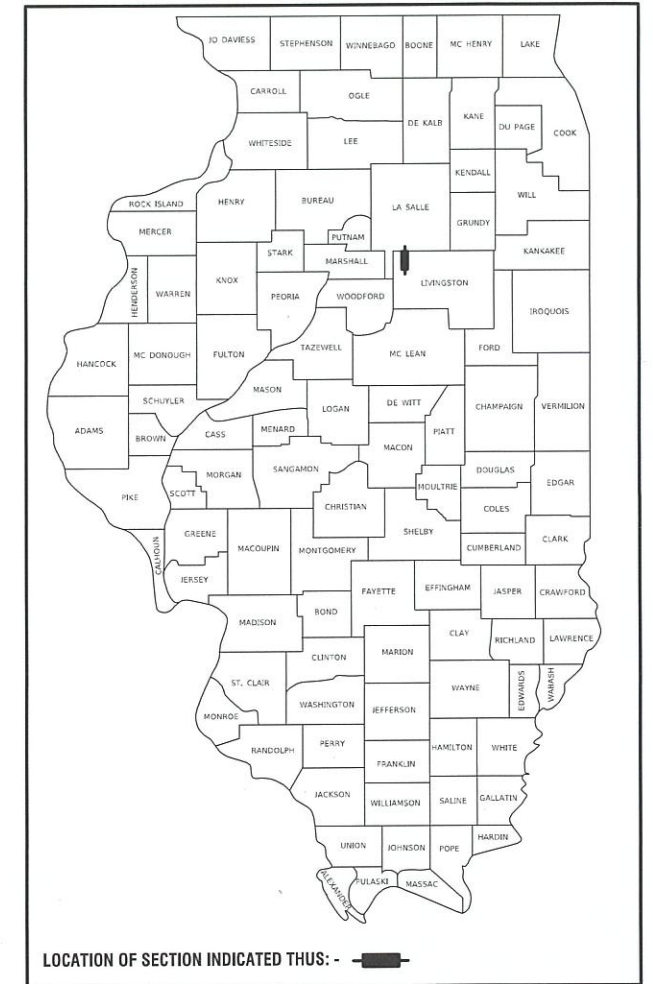
FAS ROUTE 355
SECTION 22-00201-04-RS
PROJECT 2HSR(970)
LIVINGSTON COUNTY

C-93-017-26

F.A.S. RTE.	SECTION	COUNTY	TOTAL SHEETS	SHEET NO.
355	22-00201-04-RS	LIVINGSTON	5	1
		ILLINOIS	CONTRACT NO. 87900	

INDEX OF SHEETS

- 1 COVER SHEET
- 2 SUMMARY OF QUANTITIES, EXISTING AND PROPOSED TYPICAL CROSS SECTIONS
- 3-4 MISCELLANEOUS DETAILS
- 5 SCHEDULES



FULL SIZE PLANS HAVE BEEN PREPARED USING STANDARD ENGINEERING SCALES. REDUCED SIZED PLANS WILL NOT CONFORM TO STANDARDS SCALES. IN MAKING MEASUREMENTS ON REDUCED PLANS, THE ABOVE SCALES MAY BE USED.

J.U.L.I.E.
JOINT UTILITY LOCATION INFORMATION FOR EXCAVATION
1-800-892-0123
OR 811

TRAFFIC DATA

SEE PROPOSED CROSS SECTION SHEETS FOR EACH LOCATIONS TRAFFIC DATA

CONTRACT NO. 87900

GROSS LENGTH = 16,800 FT. = 3.182 MILE
NET LENGTH = 16,800 FT. = 3.182 MILE



THESE PLANS WERE MADE BY ME OR BY A MEMBER OF MY STAFF WORKING UNDER MY PERSONAL SUPERVISION.
DATE 01/26/2026
TRENT RUESTMAN, P.E.
NO. 062.068070
EXPIRATION DATE 11/30/27

"THE ACCEPTANCE OF THIS PROJECT IS BASED ON THE MINIMUM DESIGN CRITERIA UNDER 3R GUIDELINES."

APPROVED JANUARY 26, 20 26

Clay Metcalf
LIVINGSTON COUNTY OFFICIAL

PASSED FEBRUARY 20, 20 26

DISTRICT THREE LOCAL ROADS & STREETS ENGINEER

RELEASING FOR BID
BASED ON LIMITED
REVIEW

Julia Thompson
FEBRUARY 20, 20 26

REGION TWO ENGINEER

STATE OF ILLINOIS
DEPARTMENT OF TRANSPORTATION

**PRINTED BY THE AUTHORITY
OF THE STATE OF ILLINOIS**

SUMMARY OF QUANTITIES		CONST. CODE 0005	
CODE NO.	ITEM	UNIT	TOTAL QUANTITY
40600290	BITUMINOUS MATERIALS (TACK COAT)	POUND	37,098.0
40602965	HOT-MIX ASPHALT BINDER COURSE, IL-9.5FG, N50	TON	2,759.0
40604000	HOT-MIX ASPHALT SURFACE COURSE, IL-9.5FG, MIX "C", N50	TON	2,907.0
40800050	INCIDENTAL HOT-MIX ASPHALT SURFACING	TON	87.0
44000154	HOT-MIX ASPHALT SURFACE REMOVAL, 1 1/4"	SQ YD	1,801.0
48102100	AGGREGATE WEDGE SHOULDER, TYPE B	TON	3,379.0
67100100	MOBILIZATION	L SUM	1.0
70300100	SHORT TERM PAVEMENT MARKING	FOOT	6,720.0
70300150	SHORT TERM PAVEMENT MARKING REMOVAL	SQ FT	563.0
78001110	PAINT PAVEMENT MARKING - LINE 4"	FOOT	37,800.0
X4401198	HOT-MIX ASPHALT SURFACE REMOVAL, VARIABLE DEPTH	SQ YD	878.0
X7010216	TRAFFIC CONTROL AND PROTECTION, (SPECIAL)	L SUM	1.0
Z0055300	RUMBLE STRIP	EACH	4.0

△ SPECIALTY ITEMS

BITUMINOUS MIX TABLE			
Mixture Use(s)	HMA Binder	HMA Surface	HMA Incidental
Location(s)	ENTIRE PROJECT	ENTIRE PROJECT	ENTIRE PROJECT
PG Grade	PG64-22	PG64-22	PG64-22
Design Air Voids	4.0% @ N50	4.0% @ N50	4.0% @ N50
Mixture Composition	IL 9.5FG	IL 9.5FG	IL 9.5FG
Friction Aggregate	N/A	Mixture C	Mixture C
Density Test Method	Cores/Nuclear	Cores/Nuclear	Satisfaction of Engineer
Mixture Weight	112 # / s.y. / inch	112 # / s.y. / inch	112 # / s.y. / inch
Quality Management Program	QC/QA	QC/QA	QC/QA
Sublot Size	N/A	N/A	N/A
Material Transfer Device	NO	NO	NO

HIGHWAY STANDARDS

000001-09	STANDARD SYMBOLS, ABBREVIATIONS AND PATTERNS
001006	DECIMAL OF AN INCH AND OF A FOOT
701301-04	LANE CLOSURE 2L, 2W SHORT TIME OPERATIONS
701306-04	LANE CLOSURE 2L, 2W SLOW MOVING OPERATIONS DAY ONLY ≥ 45MPH
701311-03	LANE CLOSURE 2L, 2W MOVING OPERATIONS DAY ONLY
701901-11	TRAFFIC CONTROL DEVICES
780001-05	TYPICAL PAVEMENT MARKINGS

GENERAL NOTES

THE FOLLOWING RATES OF APPLICATION HAVE BEEN USED IN CALCULATING PLAN QUANTITIES:
 HOT-MIX ASPHALT 112 LB/SQ YD/ INCH
 AGGREGATE WEDGE SHOULDER, TYPE B 2.05 TONS/CU YD

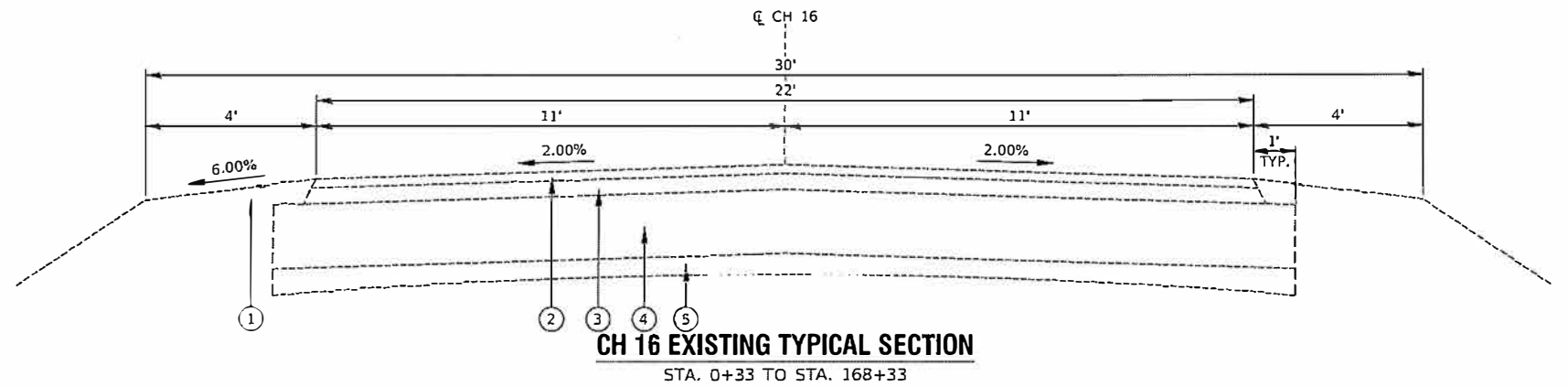
BITUMINOUS MATERIALS APPLICATION RATES:

TYPE OF SURFACE TO BE TACKED	RESIDUAL RATE
CONCRETE, EXISTING & MILLED HMA	0.050 LB/SQ FT
NEW HMA AND BRICK	0.050 LB/SQ FT

ALL AREAS WHERE A 4' WING OUT AT PRIVATE ENTRANCES AND SIDE ROADS SHALL BE CONSTRUCTED WITH THE EXTENDABLE SCREED WIDENER AND PAID FROM HOT-MIX ASPHALT BINDER AND HOT-MIX ASPHALT SURFACE COURSE PAY ITEMS.

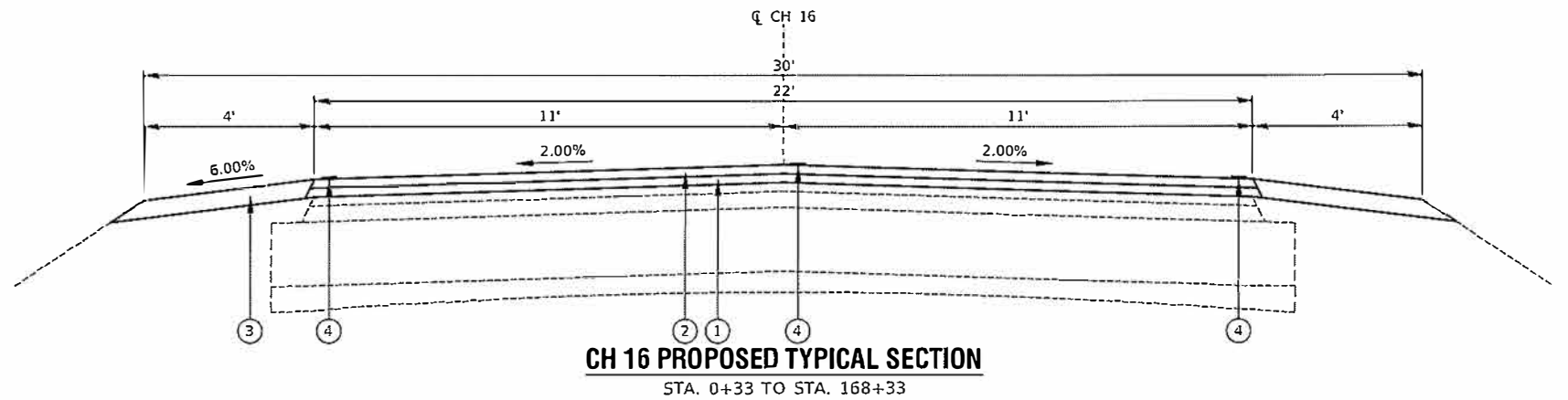
ALL PRIVATE ENTRANCES, COMMERCIAL ENTRANCES, SIDE ROADS AND SOME RURAL MAILBOX TURNOUTS ARE TO BE CONSTRUCTED AND PAID FROM INCIDENTAL HOT-MIX ASPHALT SURFACING AND SHALL BE LAID OUT BY THE ENGINEER.

AGGREGATE SHOULDERS SHALL BE PLACED ALONG ALL SIDE ROAD RETURN RADII AND SHALL BE PLACED ALONG AND BEHIND ALL FIELD ENTRANCES, MAILBOX TURNOUTS AND ALL PRIVATE AND COMMERCIAL ENTRANCES UNLESS SPECIFIED BY THE ENGINEER.



LEGEND

- ① EXISTING AGGREGATE SHOULDERS
- ② EXISTING BITUMINOUS CONCRETE, SURFACE COURSE, 1 1/4"
- ③ EXISTING BITUMINOUS CONCRETE, BINDER COURSE, 2 1/4"
- ④ EXISTING BITUMINOUS STABILIZED AGGREGATE BASE, 9"
- ⑤ EXISTING CA-5 AGGREGATE BASE COURSE, 3"



LEGEND

- ① HOT-MIX ASPHALT BINDER COURSE, IL-9.5FG, N50, 1 1/4"
- ② HOT-MIX ASPHALT SURFACE COURSE, IL-9.5FG, MIX "C", N50, 1 1/4"
- ③ AGGREGATE WEDGE SHOULDER, TYPE B
- ④ PAINT PAVEMENT MARKING LINE, 4"

Sec. 22-00201-04-RS: Kangley Road (CH 16)
 LIVINGSTON COUNTY STA. 0+33 TO STA. 168+33

STRUCTURAL DESIGN DATA 80,000 LBS	
CLASS III ROAD DESIGN PERIOD 20 YEARS	
CURRENT A.D.T.	850
STRUCTURAL DESIGN TRAFFIC:	1000 YEAR: 2046
PERCENT OF DESIGN TRAFFIC IN DESIGN LANE:	
P.V. 88%	S.U. 7% M.U. 5%
P.V. 880	S.U. 70 M.U. 50
MINIMUM SOIL SUPPORT: IBR= 3.0	
TRAFFIC FACTOR (T.R.)=	0.270
STRUCTURAL NUMBER (D _t)=	3.40
PAVEMENT STRUCTURE MATERIALS:	
SURFACE: PROPOSED HMA PAVEMENT	2.50 @ 0.40 a1=1.00
BASE: EXISTING HMA SURFACE 2005	1.25 @ 0.30 a2=0.38
BASE: EXISTING HMA BINDER 2005	2.25 @ 0.25 a3=0.56
SUBBASE: EXISTING BITUMINOUS STABILIZED BASE	9.00 @ 0.19 a4=1.71
SUBBASE: EXISTING AGGREGATE BASE COURSE	3.00 @ 0.06 a5=0.18
PROPOSED D _t TOTAL = 3.83	

NOTE: EXISTING PAVEMENT THICKNESS IS BASED ON EXISTING PLANS

MODEL: Z:\CH16\ROAD Project\020104-RS-Kangley\22-00201-04-RS-Plan.dwg

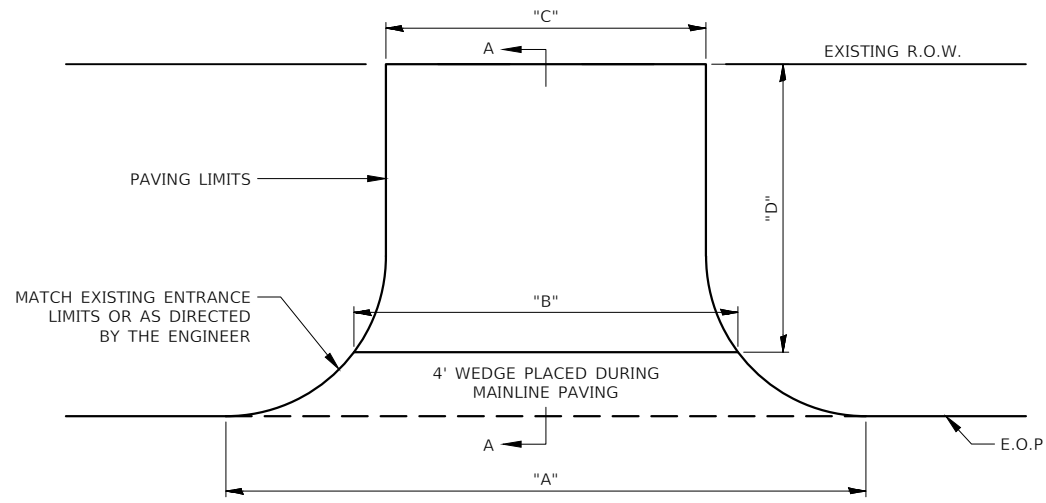
USER NAME = Trent Ruestman	DESIGNED = Designed By	REVISED = Revised By1
	DRAWN = Drawn By	REVISED = Revised By2
PLOT SCALE = ***	CHECKED = Checked By	REVISED = Revised By3
PLOT DATE = 12/23/2025	DATE = Checked Date	REVISED = Revised By4

LIVINGSTON COUNTY
 HIGHWAY DEPARTMENT

SUMMARY OF QUANTITIES, EXISTING AND
 PROPOSED TYPICAL CROSS SECTIONS

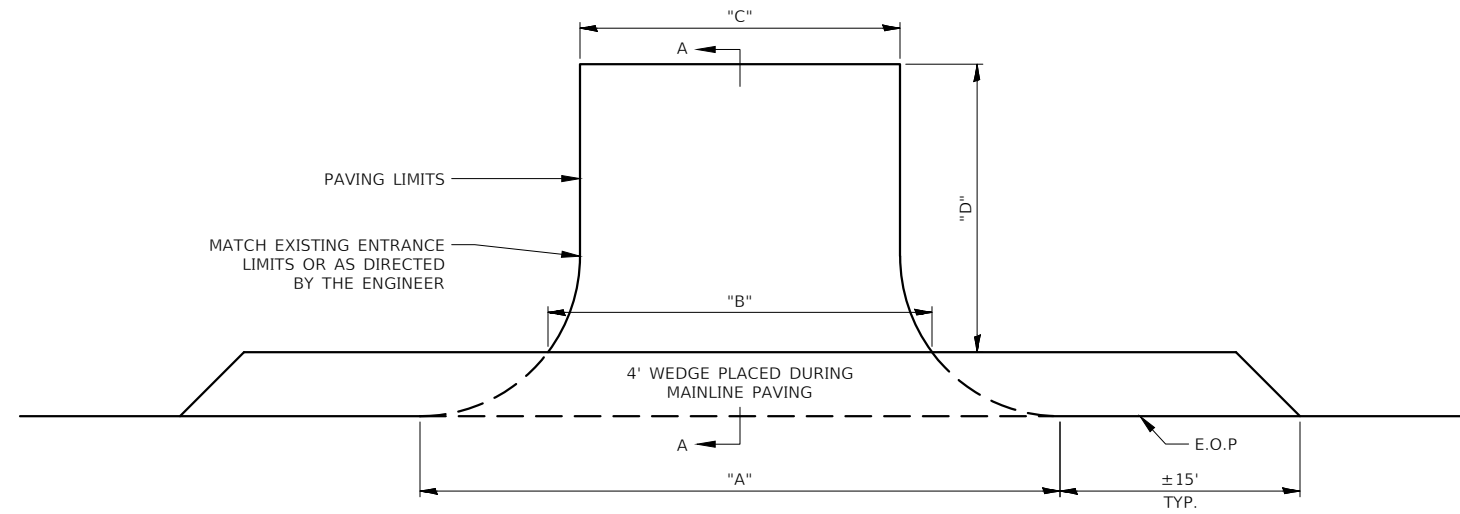
F.A.S. RTE.	SECTION	COUNTY	TOTAL SHEETS	SHEET NO.
355	22-00201-04-RS	LIVINGSTON	5	2
				CONTRACT NO. 87900
ILLINOIS FED. AID PROJECT 2HSR(970)				

SCALE: SHEET 1 OF 1 SHEETS STA. TO STA.



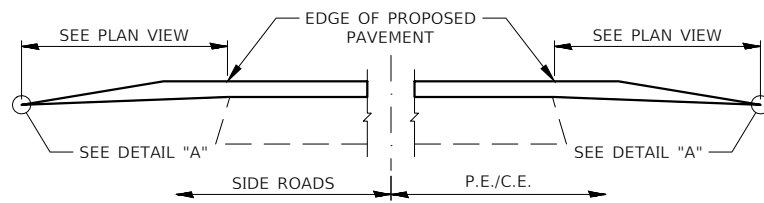
P.E./C.E. DETAIL

SEE SCHEDULE ON THIS SHEET FOR LOCATION AND QUANTITIES

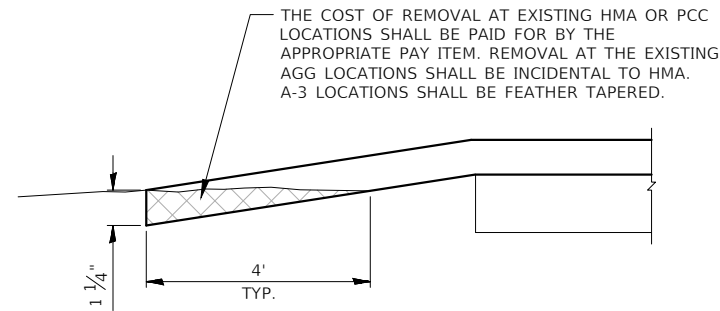


TYPICAL SIDE ROAD INTERSECTION DETAIL

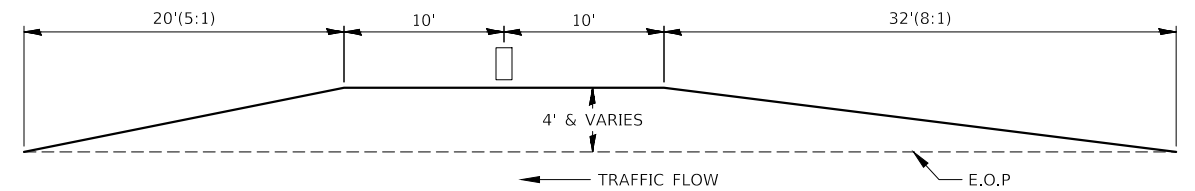
SEE SCHEDULE ON THIS SHEET FOR LOCATION AND QUANTITIES



**SECTION A-A
DETAIL AT ENTRANCE & SIDE ROADS**



DETAIL A



**MAILBOX TURNOUT DETAIL
PLACED DURING MAINLINE PAVING**

KANGLEY ROAD (CH 16) - ENTRANCE QUANTITIES									
HOUSE # / STATION	A	B	C	D	HMA SURF REM VAR DP	BIT MATLS TACK CT	HMA BC IL-9.5FG N50	HMA SC IL-9.5FG "C" N50	INCIDENTAL HMA SURF
	(FT)	(FT)	(FT)	(FT)	(SQ YD)	(POUND)	(TON)	(TON)	(TON)
3075N RT	28	20	11	18	5	24	1	1	5
3079N LT	53	20	12	18	5	29	1	1	5
*31261N LT	51	30	13	18	-	46	2	2	7
31599N LT-1	26	18	14	18	-	23	1	1	5
*31599N LT-2	50	30	20	18	-	49	2	2	7
32205N LT-1	90	48	21	18	-	67	3	3	10
32205N LT-2	90	37	18	18	-	61	3	3	8
32800N RT	35	29	18	18	-	34	1	1	7
**32821N LT	41	22	14	18	-	35	-	-	11
					10	368	14	14	65

* DIMENSIONS ARE TO THE CL OF MAILBOX, QUANTITIES INLCUDE THE MBTO
 ** MBTO GREATER THAN 4' FROM EOP. APPROACH LENGTH IS 8:1 AND DEPARTURE LENGTH IS 5:1

KANGLEY ROAD (CH 16) - INTERSECTION QUANTITIES									
LOCATION	A	B	C	D	HMA SURF REM 1.25	BIT MATLS TACK CT	HMA BC IL-9.5FG N50	HMA SC IL-9.5FG "C" N50	INCIDENTAL HMA SURF
	(FT)	(FT)	(FT)	(FT)	(SQ YD)	(POUND)	(TON)	(TON)	(TON)
3050N RT	70	58	-	-	28	13	-	2	-
3050N LT	76	76	-	-	34	15	-	2	-
3150N RT	65	58	23	18	-	73	3	3	12
3150N LT	58	47	20	18	-	63	3	3	10
					62	164	6	10	22

MODEL FILE NAME: Z:\CDWork\ROAD Projects\0201\RS4-Kangley\2020\Planning\22-00201-04-RS-Plans.dwg

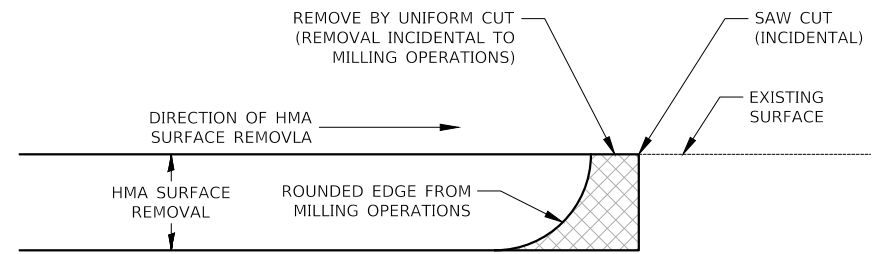
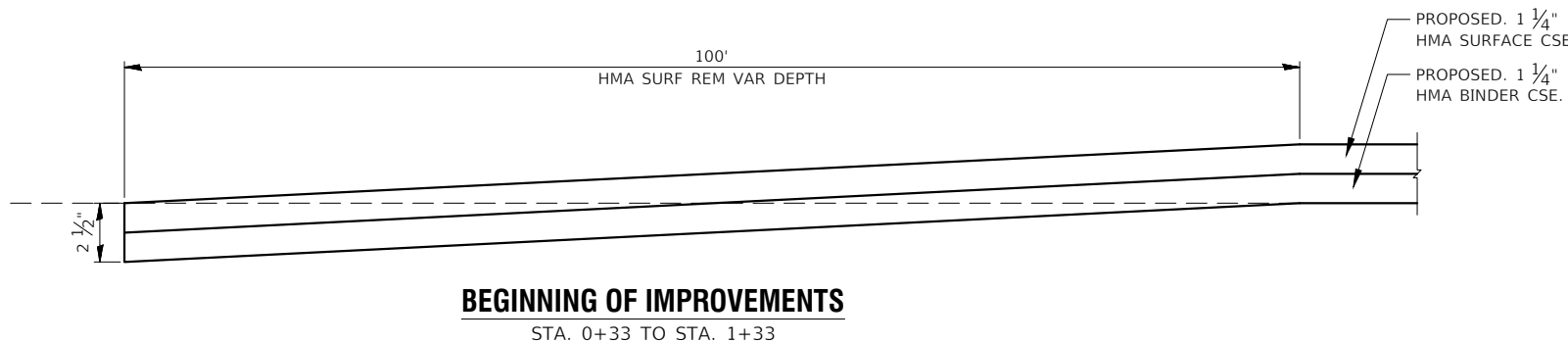
USER NAME = Trent Ruestman	DESIGNED - Designed By	REVISED - Revised By1
	DRAWN - Drawn By	REVISED - Revised By2
PLOT SCALE = ###	CHECKED - Checked By	REVISED - Revised By3
PLOT DATE = 12/23/2025	DATE - Checked Date	REVISED - Revised By4

**LIVINGSTON COUNTY
HIGHWAY DEPARTMENT**

MISCELLANEOUS DETAILS

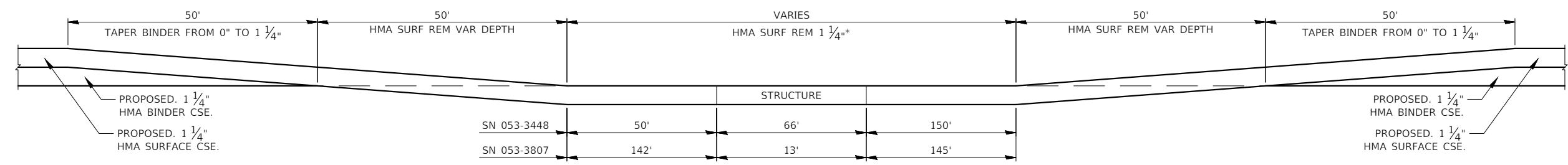
SCALE: 1" = 1' SHEET 1 OF 2 SHEETS STA. TO STA.

F.A.S RTE.	SECTION	COUNTY	TOTAL SHEETS	SHEET NO.
355	22-00201-04-R5	LIVINGSTON	5	3
CONTRACT NO. 87900			ILLINOIS FED. AID PROJECT 2HSR(970)	

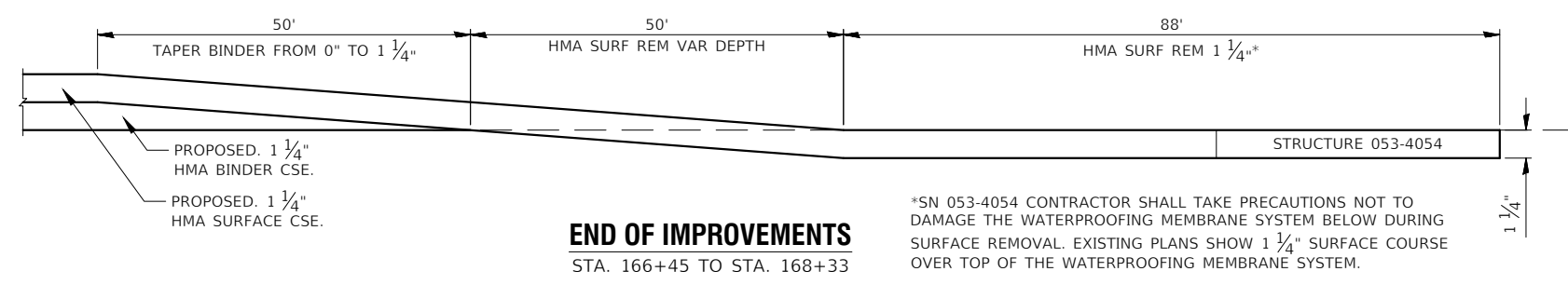


NOTE: WHEN MILLING OPERATIONS PRODUCE A ROUNDED EDGE, THEN A SAW CUT SHALL BE USED TO MANUFACTURE A PERPENDICULAR EDGE AS SHOWN IN THE DETAIL. THE ENGINEER SHALL BE THE SOLE JUDGE CONCERNING THE USE OF THIS DETAIL

HMA DETAIL AT BUTT JOINTS

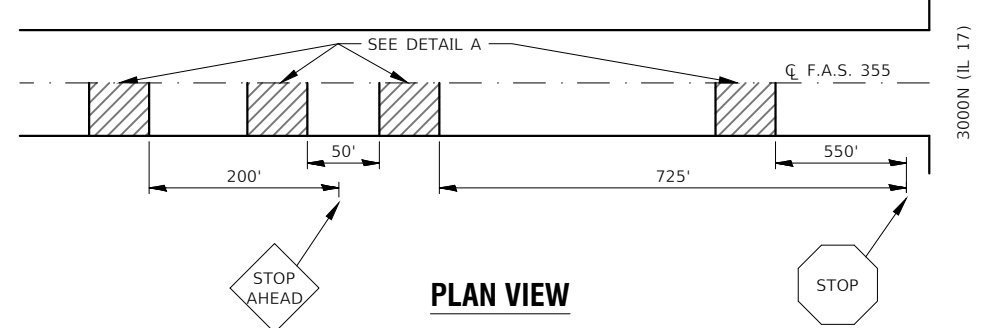


*SN 053-3448 CONTRACTOR SHALL TAKE PRECAUTIONS NOT TO DAMAGE THE WATERPROOFING MEMBRANE SYSTEM BELOW DURING SURFACE REMOVAL. EXISTING PLANS SHOW 1 1/4" SURFACE COURSE OVER TOP OF THE WATERPROOFING MEMBRANE SYSTEM.

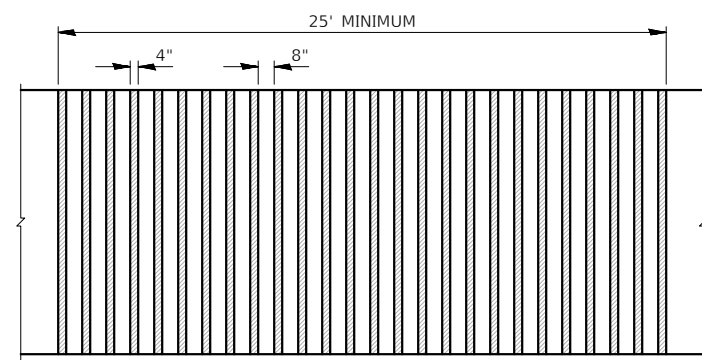


*SN 053-4054 CONTRACTOR SHALL TAKE PRECAUTIONS NOT TO DAMAGE THE WATERPROOFING MEMBRANE SYSTEM BELOW DURING SURFACE REMOVAL. EXISTING PLANS SHOW 1 1/4" SURFACE COURSE OVER TOP OF THE WATERPROOFING MEMBRANE SYSTEM.

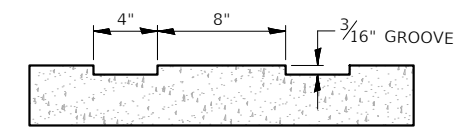
GROOVED RUMBLE STRIP APPLICATION
IN ADVANCE OF 3000N (IL 17) INTERSECTION



PLAN VIEW



DETAIL A - PLAN VIEW



DETAIL A - ELEVATION

MODEL FILE NAME: Z:\CDWork\ROAD Projects\0201RCS4-Kangley-2020\Planning\22-00201-04-RS-Plans.dwg

USER NAME = Trent Ruestman	DESIGNED - Designed By	REVISED - Revised By1
	DRAWN - Drawn By	REVISED - Revised By2
PLOT SCALE = ###	CHECKED - Checked By	REVISED - Revised By3
PLOT DATE = 12/23/2025	DATE - Checked Date	REVISED - Revised By4

LIVINGSTON COUNTY HIGHWAY DEPARTMENT

MISCELLANEOUS DETAILS

SCALE: VARIES SHEET 2 OF 2 SHEETS STA. TO STA.

F.A.S RTE.	SECTION	COUNTY	TOTAL SHEETS	SHEET NO.
355	22-00201-04-RS	LIVINGSTON	5	4
CONTRACT NO. 87900				
ILLINOIS FED. AID PROJECT 2HSR(970)				

SCHEDULE OF RESURFACING QUANTITIES												
LOCATION	LENGTH	WIDTH	HMA SURF REM VAR DP	HMA SURF REM 1.25	SHORT TERM PAVT MKING	SHRT TRM PAVT MK REM	BIT MATLS TACK CT	HMA BC IL-9.5FG N50	HMA SC IL-9.5FG "C" N50	INCIDENTAL HMA SURF	AGG WDG SHLD TYPE B	
	(FOOT)	(FOOT)	(SQ YD)	(SQ YD)	(FOOT)	(SQ FT)	(POUND)	(TON)	(TON)	(TON)	(TON)	
MAINLINE			(4 Apps.)				(1 Apps.)					
0+33. TO 1+33. (TAPER)	100	22	248	-	40	3	223	17	17	-	20	
1+33. TO 23+85.	2252	22	-	-	900	75	5,029	391	385	-	456	
23+85. TO 24+35. (TAPER)	50	22	-	-	20	2	112	4	9	-	10	
24+35. TO 24+85. (TAPER)	50	22	124	-	20	2	56	-	9	-	10	
24+85. TO 25+35.	50	22	-	124	20	2	56	-	9	-	10	
25+35. TO 26+01. (053-3448)	66	30	-	222	28	2	100	-	15	-	-	
26+01. TO 27+51.	150	22	-	372	60	5	168	-	26	-	30	
27+51. TO 28+01. (TAPER)	50	22	124	-	20	2	56	-	9	-	10	
28+01. TO 28+51. (TAPER)	50	22	-	-	20	2	112	4	9	-	10	
28+51. TO 112+03.	8352	22	-	-	3340	278	18,653	1,451	1,429	-	1691	
112+03. TO 112+53. (TAPER)	50	22	-	-	20	2	112	4	9	-	10	
112+53. TO 113+03. (TAPER)	50	22	124	-	20	2	56	-	9	-	10	
113+03. TO 116+03.	300	22	-	744	120	10	335	-	51	-	61	
116+03. TO 116+53. (TAPER)	50	22	124	-	20	2	56	-	9	-	10	
116+53. TO 117+03. (TAPER)	50	22	-	-	20	2	112	4	9	-	10	
117+03. TO 166+45.	4942	22	-	-	1976	165	11,037	858	846	-	1001	
166+45. TO 166+95. (TAPER)	50	22	-	-	20	2	112	4	9	-	10	
166+95. TO 167+45. (TAPER)	50	22	124	-	20	2	56	-	9	-	10	
167+45. TO 167+95.	50	22	-	124	20	2	56	-	9	-	10	
167+95. TO 168+33. (053-4054)	38	36	-	153	16	1	69	-	11	-	-	
MAINLINE QUANTITIES	16,800	-	868	1,739	6,720	563	36,566	2,739	2,883	0	3,379	
MISCELLANEOUS												
PRIVATE & COMMERCIAL ENTRANCES	-	-	10	-	-	-	368	14	14	65	-	
SIDEROAD INTERSECTIONS	-	-	-	62	-	-	164	6	10	22	-	
TOTALS OF MAINLINE & MISC.	16,800	-	878	1,801	6,720	563	37,098	2,759	2,907	87	3,379	

SCHEDULE OF PAINT PAVEMENT MARK 4"					
LOCATION	YELLOW			WHITE	
	NPZ	SKIP	EDGELINE		
STATION TO STATION	NBL	SBL	☉	NBL/WBL	SBL/EBL
0+33. TO 168+33.			4,200	16,800	16,800
TOTALS	0	0	4,200	16,800	16,800
TOTAL PAY QUANTITY			37,800	FOOT	

MODEL FILE NAME: Z:\COWork\ROAD Projects\0201\RS4-Kangley-2\0201\Planning\02-00201-04-RS-Plans.dwg

USER NAME = Trent Ruestman	DESIGNED - Designed By	REVISED - Revised By1
	DRAWN - Drawn By	REVISED - Revised By2
PLOT SCALE = 1" = 1'	CHECKED - Checked By	REVISED - Revised By3
PLOT DATE = 12/23/2025	DATE - Checked Date	REVISED - Revised By4

**LIVINGSTON COUNTY
HIGHWAY DEPARTMENT**

SCHEDULES

SCALE: SHEET 1 OF 1 SHEETS STA. TO STA.

F.A.S RTE.	SECTION	COUNTY	TOTAL SHEETS	SHEET NO.
355	22-00201-04-R5	LIVINGSTON	5	5
CONTRACT NO. 87900				
ILLINOIS FED. AID PROJECT 2HSR(970)				