

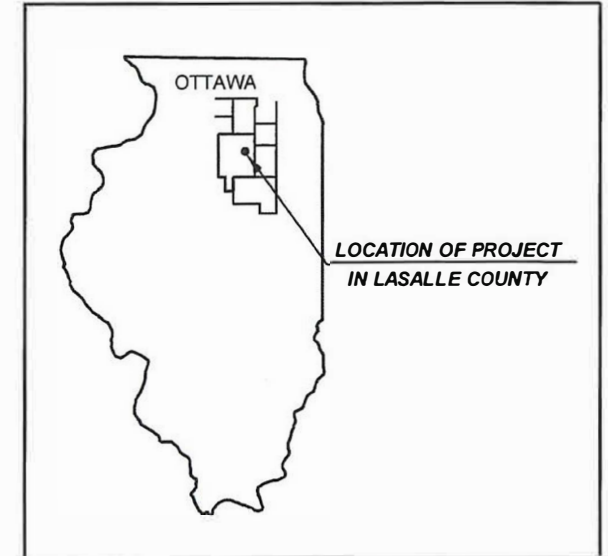
04-24-2026 LETTING ITEM 092

**STATE OF ILLINOIS
DEPARTMENT OF TRANSPORTATION
DIVISION OF HIGHWAYS**

**PLANS FOR SAFE ROUTES TO SCHOOL SIDEWALK IMPROVEMENTS
FUNDED BY THE SAFE ROUTES TO SCHOOL PROGRAM
CITY OF MARSEILLES - VARIOUS LOCATIONS
LASALLE COUNTY**

**SECTION NO. 24-00057-00-SW
PROJECT NO. 013B(661)
JOB NO. C-93-035-26**

IN COOPERATION WITH MARSEILLES ELEMENTARY SCHOOL DISTRICT 150

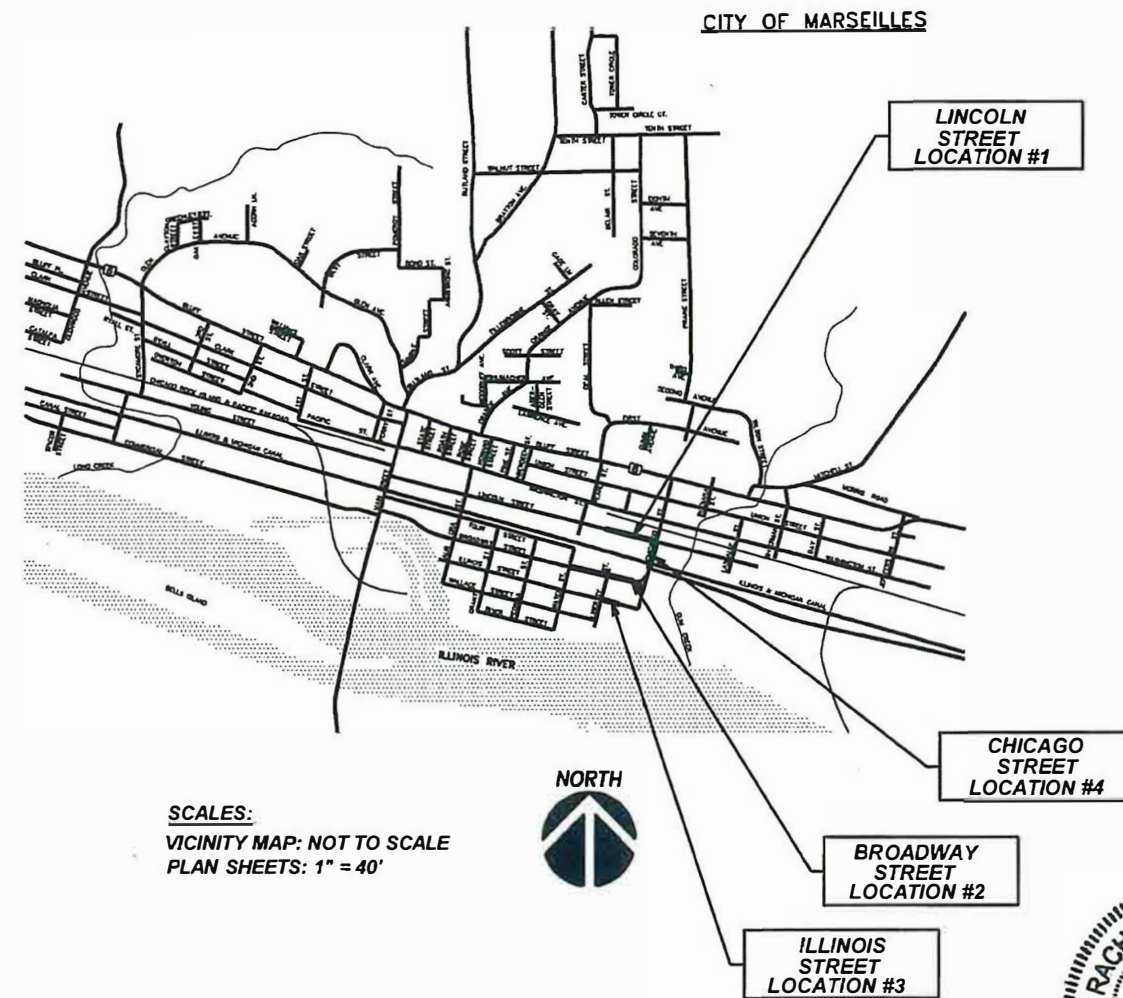


INDEX OF SHEETS

- 1 COVER SHEET
- 2 GENERAL NOTES AND SCHEDULE OF QUANTITIES
- 3 LINCOLN STREET
- 4 BROADWAY STREET
- 5 CHICAGO & ILLINOIS STREET

IDOT HIGHWAY STANDARDS

NO.	DESCRIPTION
424001-12	PERPENDICULAR CURB RAMPS FOR SIDEWALKS
606001-09	CONCRETE CURB TYPE B AND COMBINATION CONCRETE CURB AND GUTTER
701501-06	URBAN LANE CLOSURE, 2L, 2W, UNDIVIDED
701801-06	SIDEWALK, CORNER OR CROSSWALK CLOSURE
701901-11	TRAFFIC CONTROL DEVICES
720006-04	SIGN PANEL ERECTION DETAILS
728001-01	TELESCOPING STEEL SIGN SUPPORT



STATE OF ILLINOIS
DEPARTMENT OF TRANSPORTATION
DIVISION OF HIGHWAYS

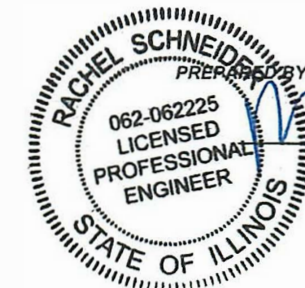
SUBMITTED *Jim Hollenbach* 02-06-26
MAYOR

PASSED *[Signature]* 02-10-26
DISTRICT ENGINEER OF LOCAL ROADS & STREETS

RELEASED FOR BID BASED ON LIMITED REVIEW 02/20/26
Julia Thompson
REGION 2 ENGINEER

CONTRACT 87909

**J.U.L.I.E. SYSTEM -
THE TOLL FREE TELEPHONE
NUMBER FOR JOINT UTILITY
INFORMATION FOR EXCAVATORS
IS 811 OR 1-800-892-0123**



RACHEL M. SCHNEIDER
L.R.P.E. NO. 062-062225
EXPIRES NOVEMBER 30, 2027

DATE: 02-05-26

PRINTED BY THE AUTHORITY OF
THE STATE OF ILLINOIS

FILE NAME = J:/2057.113A_COVER.DWG	DESIGNED - L.D.C.	REVISED -	ETSCHEID, DUTTLINGER & ASSOCIATES, INC. Professional Engineers & Land Surveyors 1304 Gemini Circle • Ottawa, IL 61350-1692 tel 815-434-3925 • Fax 815-434-3953	SAFE ROUTES TO SCHOOL SIDEWALK IMPROVEMENTS MARSEILLES, IL	F.A.U. SECTION	COUNTY	TOTAL SHEETS	SHEET NO.
PLOT DATE = FEBRUARY 5, 2026	DRAWN - L.D.C.	REVISED -			24-00057-00-SW	LASALLE	1	6
PLOT SCALE = 1"=40'	CHECKED - R.M.S.	REVISED -			PROJECT NO. 013B(661)	JOB NO. C-93-035-26		
	DATE - FEBRUARY 5, 2026	REVISED -		CONTRACT NO. 87909	ILLINOIS			

GENERAL NOTES

- ALL SAW CUTTING OF EXISTING PAVEMENTS, CURB & GUTTERS, DRIVEWAYS, AND SIDEWALKS, SHALL BE CONSIDERED INCIDENTAL TO THE CONTRACT. THE MINIMUM SAW CUT DEPTH SHALL BE AS FOLLOWS UNLESS OTHERWISE SPECIFIED:

ITEM(S)	MINIMUM DEPTH (IN.)
CONCRETE CURBS, GUTTERS, & DRIVEWAYS	6"
CONCRETE SIDEWALKS	3"
HMA SURFACES	1 1/2"

- THE CONTRACTOR WILL PROTECT ALL TREES AND BUSHES FROM DAMAGE DUE TO HIS OPERATIONS.
- THE LOCATION OF EXISTING UNDERGROUND UTILITIES ARE SHOWN BASED IN LARGE PART FROM INFORMATION FURNISHED BY UTILITY COMPANIES AND OTHERS. THE ACTUAL LOCATION OR EXISTENCE MAY BE CONSIDERABLY DIFFERENT. THE ENGINEER DOES NOT WARRANT THE LOCATION OR ANY SPECIFIC INFORMATION CONCERNING UNDERGROUND UTILITIES. IT SHALL BE THE CONTRACTOR'S RESPONSIBILITY TO VERIFY THE CORRECTNESS OF THE SAME PRIOR TO THE START OF CONSTRUCTION BY UNCOVERING UNDERGROUND UTILITIES IN ALL LOCATIONS WHERE HE FEELS THE PROPOSED CONSTRUCTION MAY NEED TO BE ALTERED TO PREVENT CONFLICTS IN LINE, GRADE OR WORKING CLEARANCES. THE CONTRACTOR IS EXPECTED TO WORK ADJACENT TO, BENEATH, ABOVE AND IN CLOSE PROXIMITY TO ALL EXISTING UTILITIES. ANY NECESSARY CHANGES DURING CONSTRUCTION WILL BE DEALT WITH ON A CASE BY CASE BASIS.

SHOULD IT BE NECESSARY TO RELOCATE ANY EXISTING UNDERGROUND UTILITY TO PREVENT LINE OR GRADE CONFLICTS WITH THE NEW CONSTRUCTION, THE CONTRACTOR SHALL IMMEDIATELY ADVISE THE ENGINEER.

- THE CONTRACTOR SHALL BE RESPONSIBLE FOR PROTECTING UTILITY PROPERTY FROM CONSTRUCTION OPERATIONS AS OUTLINED IN ARTICLE 107.39 OF THE STANDARD SPECIFICATIONS. THE J.U.L.I.E. NUMBER IS 1-800-892-0123. A MINIMUM OF FORTY-EIGHT HOURS ADVANCE NOTICE IS REQUIRED. MEMBERS OF J.U.L.I.E. KNOWN TO BE WITHIN THE LIMITS OF THE IMPROVEMENT ARE:

UTILITY	
AMEREN IP	ELECTRIC
NICOR GAS	NATURAL GAS
MTCO	PHONE
MEDIACOM LLC	CABLE TV
CITY OF MARSEILLES	STORM SEWERS, SANITARY SEWERS, WATERMANS & SERVICES

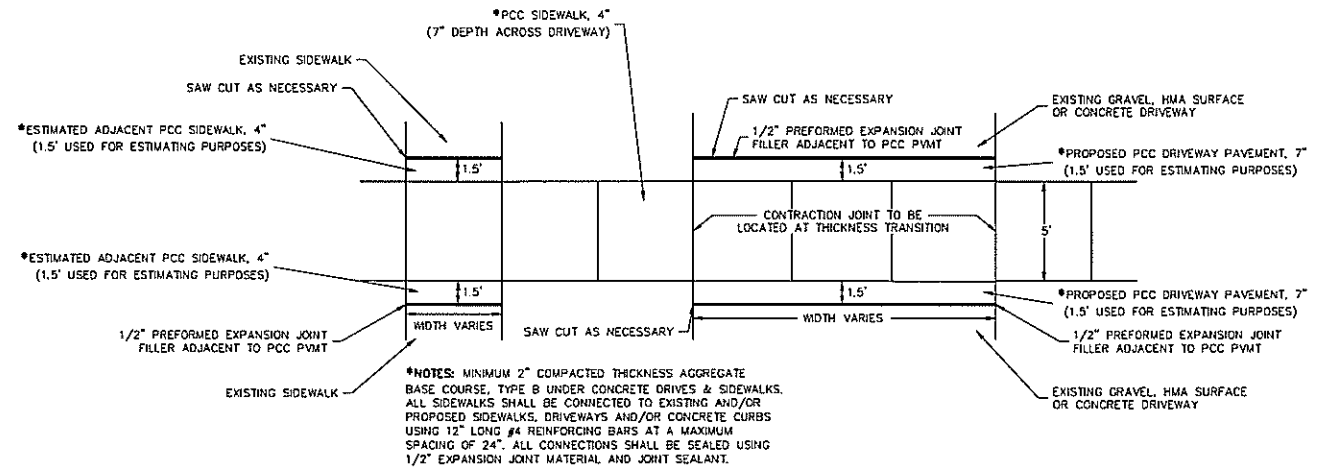
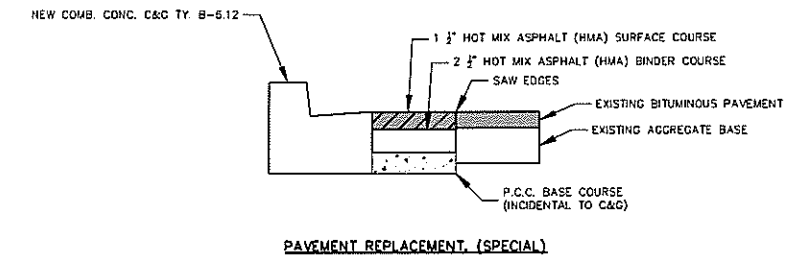
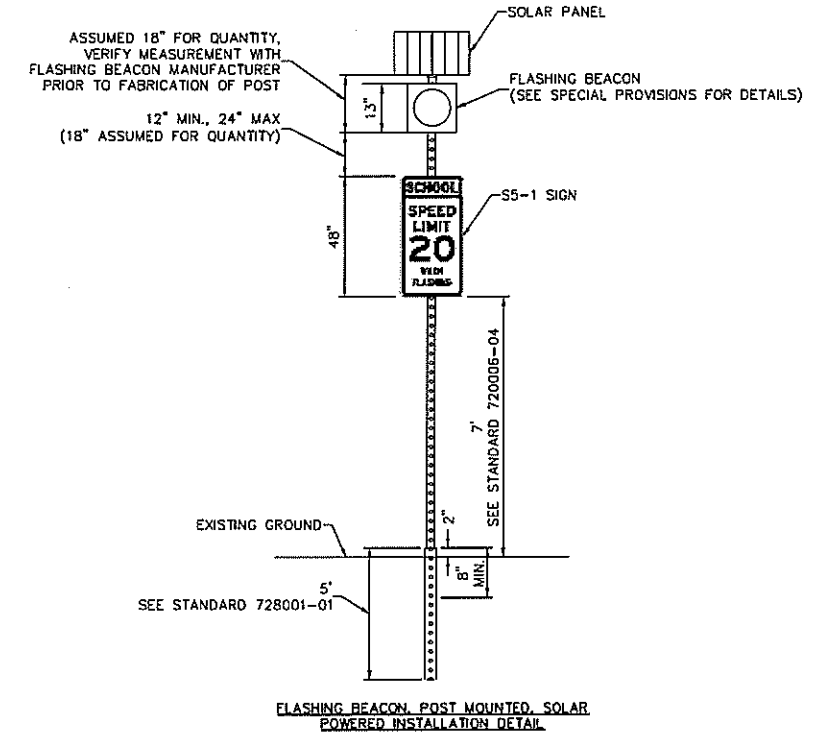
- ABANDONED UNDERGROUND UTILITIES THAT CONFLICT WITH CONSTRUCTION SHALL BE DISPOSED OF OUTSIDE THE LIMITS OF THE RIGHT OF WAY ACCORDING TO ARTICLE 202.03 OF THE STANDARD SPECIFICATIONS.
- THE CONTRACTOR WILL BE FULLY RESPONSIBLE FOR THE RESTORATION OF ANY AND ALL CURB AND GUTTER, DRIVEWAYS, SIDEWALKS, PARKING LOTS AND STREETS DAMAGED OR DESTROYED DURING THE CONSTRUCTION OF THIS PROJECT. ALL CURB AND CUTTER, DRIVEWAYS, SIDEWALKS, PARKING LOTS AND STREETS DAMAGED BY THIS CONTRACTOR'S WORK WILL BE REPAIRED OR REPLACED.

SUMMARY OF QUANTITIES

ITEM NO.	ITEM DESCRIPTION	UNIT	TOTAL QUANTITY
21101615	TOPSOIL FURNISH AND PLACE, 4"	SQUARE YARD	782
25000100	SEEDING, CLASS 1	ACRE	0.25
25000400	NITROGEN FERTILIZER NUTRIENT	POUND	18
25000500	PHOSPHORUS FERTILIZER NUTRIENT	POUND	18
25000600	POTASSIUM FERTILIZER NUTRIENT	POUND	18
25100630	EROSION CONTROL BLANKET	SQUARE YARD	782
35101582	AGGREGATE BASE COURSE, TYPE B, 2"	SQUARE YARD	1835
42300300	P.C.C. DRIVEWAY PAVEMENT, 7 INCH	SQUARE YARD	141
42400100	P.C.C. SIDEWALK, 4 INCH	SQUARE FOOT	14011
42400800	DETECTABLE WARNING	SQUARE FOOT	200
44000200	DRIVEWAY PAVEMENT REMOVAL	SQUARE YARD	141
44000500	COMBINATION CURB AND GUTTER REMOVAL	FOOT	180
44000600	SIDEWALK REMOVAL	SQUARE FOOT	14011
60603800	COMBINATION CONCRETE CURB AND GUTTER, TYPE B-6.12	FOOT	180
67100100	MOBILIZATION	LUMP SUM	1
70102620	TRAFFIC CONTROL AND PROTECTION, STANDARD 701801	LUMP SUM	1
* 72000100	SIGN PANEL - TYPE 1	SQUARE FOOT	71
* 72800100	TELESCOPING STEEL SIGN SUPPORT	FOOT	39
* 72900100	METAL POST - TYPE A	FOOT	81
* 78001130	PAINT PAVEMENT MARKING - LINE 8"	FOOT	788
* 78001150	PAINT PAVEMENT MARKING - LINE 12"	FOOT	756
* 78001180	PAINT PAVEMENT MARKING - LINE 24"	FOOT	143
X4420207	PAVEMENT REPLACEMENT, (SPECIAL)	SQUARE YARD	22
* X0325714	FLASHING BEACON, POST MOUNTED, SOLAR POWERED INSTALLATION	EACH	2
X7240195	REMOVE EXISTING SIGN PANEL	EACH	1
X7240207	REMOVE EXISTING SIGN COMPLETE	EACH	3
* XX009225	STREET SIGN COMPLETE	EACH	1

* SPECIALTY ITEM

HMA MIXTURE REQUIREMENT TABLE		
LOCATIONS	ENTIRE PROJECT	ENTIRE PROJECT
MIXTURE USE(S)	HMA BINDER COURSE	HMA SURFACE COURSE
BINDER GRADE (PG)	PG 64-22	PG 64-22
DESIGN AIR Voids	4.0% @ N50	4.0% @ N50
MIXTURE COMPOSITION (MIXTURE GRADATION)	IL 19.0	IL 9.5
FRICTION AGGREGATE		MIXTURE C
MIXTURE WEIGHT	112.0 LB/SY/IN	112.0 LB/SY/IN
QUALITY MANAGEMENT PROGRAM	QCQA	QCQA
SUBLOT SIZE	N/A	N/A
DENSITY TEST METHOD	NUCLEAR	NUCLEAR
MATERIAL TRANSFER DEVICE (REQUIRED)	NO	NO



TYPICAL SIDEWALK THROUGH DRIVEWAY & ADJACENT SIDEWALK DETAIL
NOT TO SCALE

	COMBINATION CURB & GUTTER REMOVAL	COMBINATION CONCRETE CURB & GUTTER TYPE B-6.12	SIDEWALK REMOVAL	AGGREGATE BASE COURSE, TYPE B, 2"	DRIVEWAY PAVEMENT REMOVAL	P.C.C. DRIVEWAY PAVEMENT, 7 INCH	P.C.C. SIDEWALK, 4 INCH	DETECTABLE WARNING	TOPSOIL FURNISH AND PLACE, 4"	PAVEMENT REPLACEMENT, (SPECIAL)
LINCOLN STREET	FOOT	FOOT	SQUARE FOOT	SQUARE YARD	SQUARE YARD	SQUARE YARD	SQUARE FOOT	SQUARE FOOT	SQUARE YARD	SQUARE YARD
L 1			724	105.5	14.3	14	724		31	
L 2			275	36.9	3.3	3	275		15	
L 3			237	34.6	4.3	4	237		10	
L 4			25	4.4	1.3	1	25		1	
L 5			25	4.7	1.7	2	25			
L 6			75	12.5	3.3	3	75		2	
L 7			185	22.6			185		12	
L 8			326	47.5	7.0	7	326		14	
L 9			111	14.9	0.7	1	111		6	
L 10			150	21.3	3.0	3	150		7	
L 11			25	3.1			25		2	
L 12			90	12.7	1.7	2	90		4	
L 13			53	6.8			53		3	
L 14			90	11.0			90		6	
L 15			76	10.0			76		4	
L 16			55	6.7			55		4	
L 17			40	4.9			40		3	
L 18			70	10.9	2.3	2	70		2	
L 19			100	12.2			100		7	
L 20			25	3.1			25		2	
L 21			106	13.6			106		6	
L 22			250	30.6			250		17	
L 23			25	3.1			25		2	
L 24			685	95.1	11.3	11	685		34	
L 25			255	34.5	3.3	3	255		14	
L 26			300	39.7	3.0	3	300		17	
L 27			50	6.1			50		3	
L 28			381	47.2			381		25	
L 29	10	10	70	9.2			70	10	5	1
L 30			50	6.1			50		3	
L 31			260	34.8	3.0	3	260		14	
L 32			285	41.2	6.3	6	285		13	
L 33			259	35.3	2.7	3	259		14	
L 34			241	30.1			241		15	
L 35			175	24.4	3.0	3	175		9	
L 36			210	30.3	4.7	5	210		9	
L 37			230	28.1			230		15	
L 38			200	24.4			200		13	
L 39			50	6.1			50		3	
L 40			25	3.1			25		2	
L 41			120	14.7			120		8	
L 42			385	52.4	5.3	5	385		20	
L 43			650	85.1	5.7	6	650		38	
SUBTOTAL	10	10	8019	1081	91	91	8019	10	435	1

	PAINT PAVEMENT MARKING- LINE 6"	PAINT PAVEMENT MARKING- LINE 12"	PAINT PAVEMENT MARKING- LINE 24"
INTERSECTION	FOOT	FOOT	FOOT
Broadway & Aurora	58	54	
Broadway & Peoria	92	90	24
Broadway & Water	92	84	24
Broadway & Liberty	150	144	24
Chicago & Lincoln	158	156	36
Lincoln & Aurora	58	54	12
Lincoln & Pearl	92	90	
Illinois & Liberty	88	84	23
TOTALS	788	756	143

	S1-1 SHEETING TY, ZZ SIGN PANEL, TYPE 1	W16-7P SHEETING TY, ZZ SIGN PANEL, TYPE 1	S5-1 SHEETING TY, ZZ SIGN PANEL, TYPE 1	S5-2 SHEETING TY, AP SIGN PANEL, TYPE 1	METAL POST - TYPE A	TELESCOPING STEEL SIGN SUPPORT	FLASHING BEACON, POST MOUNTED, SOLAR POWERED INSTALLATION	REMOVE EXISTING SIGN PANEL	REMOVE EXISTING SIGN COMPLETE	R1-6a STREET SIGN COMPLETE
INTERSECTION	SQUARE FOOT	SQUARE FOOT	SQUARE FOOT	SQUARE FOOT	FOOT	FOOT	EACH	EACH	EACH	EACH
Lincoln & Pearl	18.0	4.4			27.0					
Broadway & Aurora	18.0	4.4			27.0					
Broadway & Water								1		
Broadway & Liberty								1		1
Broadway & Chicago			8.0	5.0	13.5	19.5	1			
Chicago (North of Canal)			8.0	5.0	13.5	19.5	1			
Chicago & Lincoln								1		
TOTALS	36	9	16	10	81	39	2	1	3	1

	COMBINATION CURB & GUTTER REMOVAL	COMBINATION CONCRETE CURB & GUTTER TYPE B-6.12	SIDEWALK REMOVAL	AGGREGATE BASE COURSE, TYPE B, 2"	DRIVEWAY PAVEMENT REMOVAL	P.C.C. DRIVEWAY PAVEMENT, 7 INCH	P.C.C. SIDEWALK, 4 INCH	DETECTABLE WARNING	TOPSOIL FURNISH AND PLACE, 4"	PAVEMENT REPLACEMENT, (SPECIAL)
BROADWAY STREET	FOOT	FOOT	SQUARE FOOT	SQUARE YARD	SQUARE YARD	SQUARE YARD	SQUARE FOOT	SQUARE FOOT	SQUARE YARD	SQUARE YARD
B 1			85	13.4	3.0	3	85		3	
B 2			100	14.2	2.0	2	100		5	
B 3			75	9.2			75		5	
B 4	10	10	70	9.2			70	10	5	1
B 5			312	38.0			312		19	
B 6			60	7.3			60		4	
B 7			25	3.1			25		2	
B 8			25	3.1			25		2	
B 9			60	9.3	2.0	2	60		2	
B 10			140	26.4	9.3	9	140			
B 11			308	44.3	6.7	7	308		13	
B 12			110	13.4			110		7	
B 13	10	10	70	9.2			70	10	5	1
B 14			225	29.8	2.3	2	225		13	
B 15			50	6.1			50		3	
B 16			135	16.5			135		9	
B 17	10	10	70	9.2			70	10	5	1
B 18			100	12.2			100		7	
B 19			227	30.4	3.0	3	227		7	
B 20			160	25.6	6.0	6	160		5	
B 21	10	10	76	9.8			76	10	4	1
B 22			240	29.3			240		16	
B 23			295	39.4	3.3	3	295		16	
B 24			70	8.6			70		5	
B 25			25	3.1			25		2	
B 26			70	8.6			70		5	
B 27			65	7.9			65		4	
B 28			70	8.6			70	10	5	1
B 29			70	8.6			70	10	5	1
B 30			75	9.2			75		5	
B 31			45	7.8	2.3	2	45		1	
B 32	10	10	70	9.2			70	10	5	1
B 33	10	10	70	9.2			70	10	5	1
B 34	10	10	70	9.2			70	10	5	1
B 35			25	3.1			25		2	
B 36			70	8.6			70		5	
B 37			60	11.3	4.0	4	60			
B 38			249	30.3			249		15	
B 39			255	31.2			255		17	
SUBTOTAL	70	70	4377	583	44	44	4377	90	240	10
ILLINOIS STREET				9.2						
I 1	10	10	70				70	10	5	1
I 2	20	20	225	9.2			225	20	15	2
I 3	10	10	70	9.2			70	10	5	1
I 4			75	9.2			75		5	
I 5			150	18.3			150		10	
I 6			50	6.1			50		3	
I 7			130	19.2	3.3	3	130		9	
SUBTOTAL	40	40	770	80	3	3	770	40	51	4
CHICAGO STREET										
C 1			155	21.6	2.7	3	155		10	
C 2	10	10	70	9.2			70	10	5	1
C 3	10	10	70	9.2			70	10	5	1
C 4			90	11.0			90		6	
C 5			25	3.1			25		2	
C 6	20	20	220	18.3			220	20	15	2
C 7	20	20	215	18.3			215	20	14	2
SUBTOTAL	60	60	845	91	3	3	845	60	56	7
TOTAL	180	180	14011	1835	141	141	14011	200	782	22

FILE NAME = J:/2057.113A_SCHEDULE.DWG

DESIGNED -- L.D.C.	REVISED --
DRAWN -- L.D.C.	REVISED --
CHECKED -- R.M.S.	REVISED --
DATE -- FEBRUARY 5, 2026	REVISED --

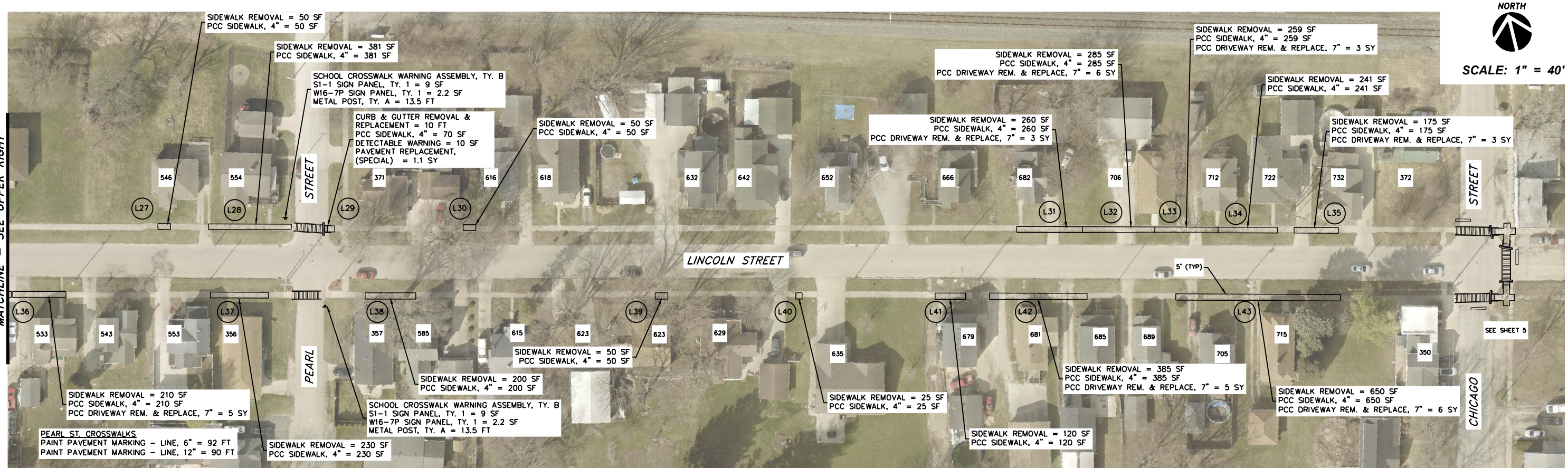
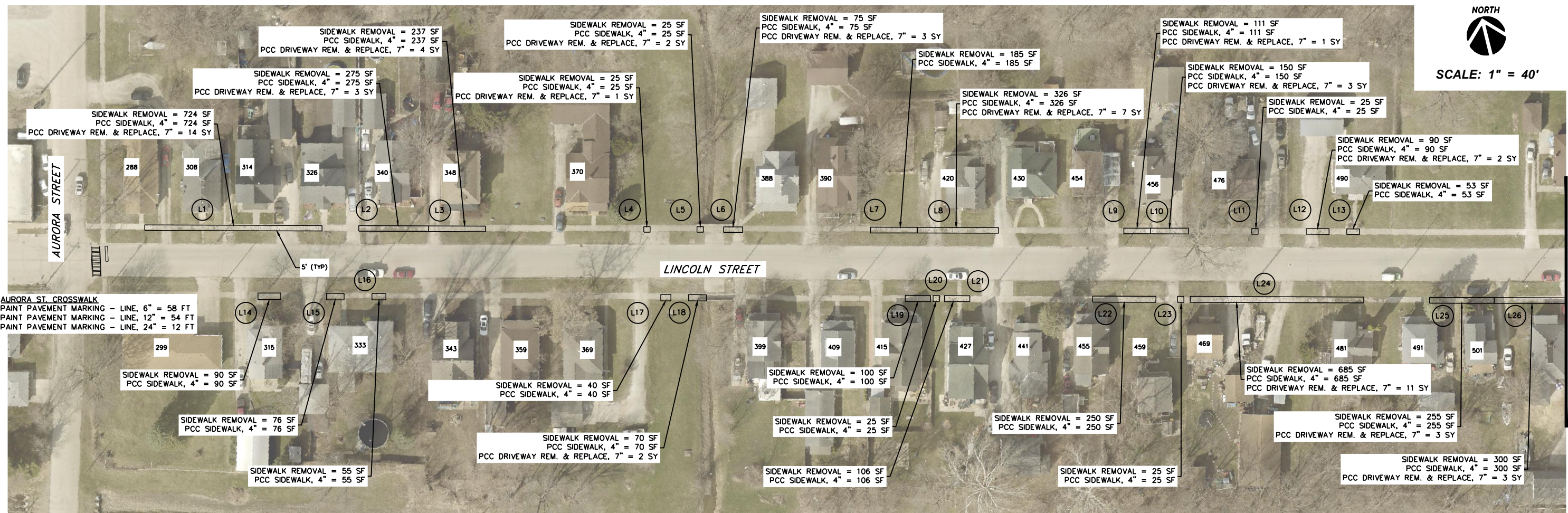


ETSCHIED, DUTTLINGER & ASSOCIATES, INC.

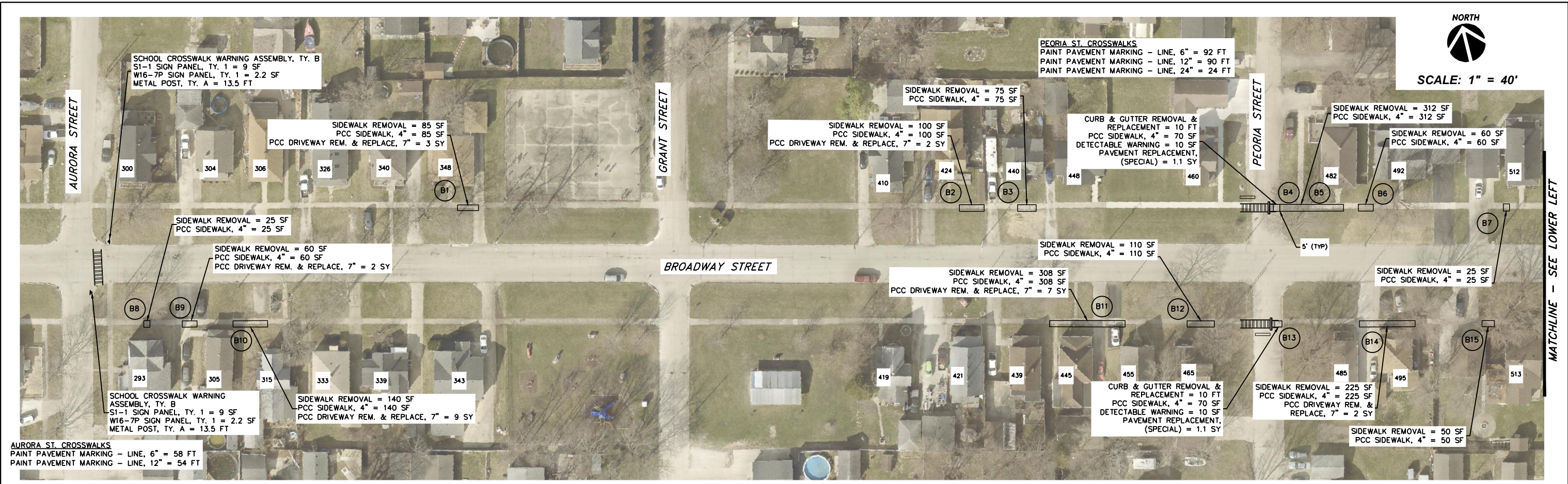
Professional Engineers & Land Surveyors
1304 Gemini Circle • Ottawa, IL 61350-1692
tel: 815-434-3925 • fax: 815-434-3953

SAFE ROUTES TO SCHOOL SIDEWALK IMPROVEMENTS MARSEILLES, IL

F.A.U. RTE.	SECTION	COUNTY	TOTAL SHEETS	SHEET NO.
	24-00057-00-SW	LASALLE	3	6
	PROJECT NO. 013B(661)	JOB NO. C-93-035-26		
	CONTRACT NO. 87909	ILLINOIS		

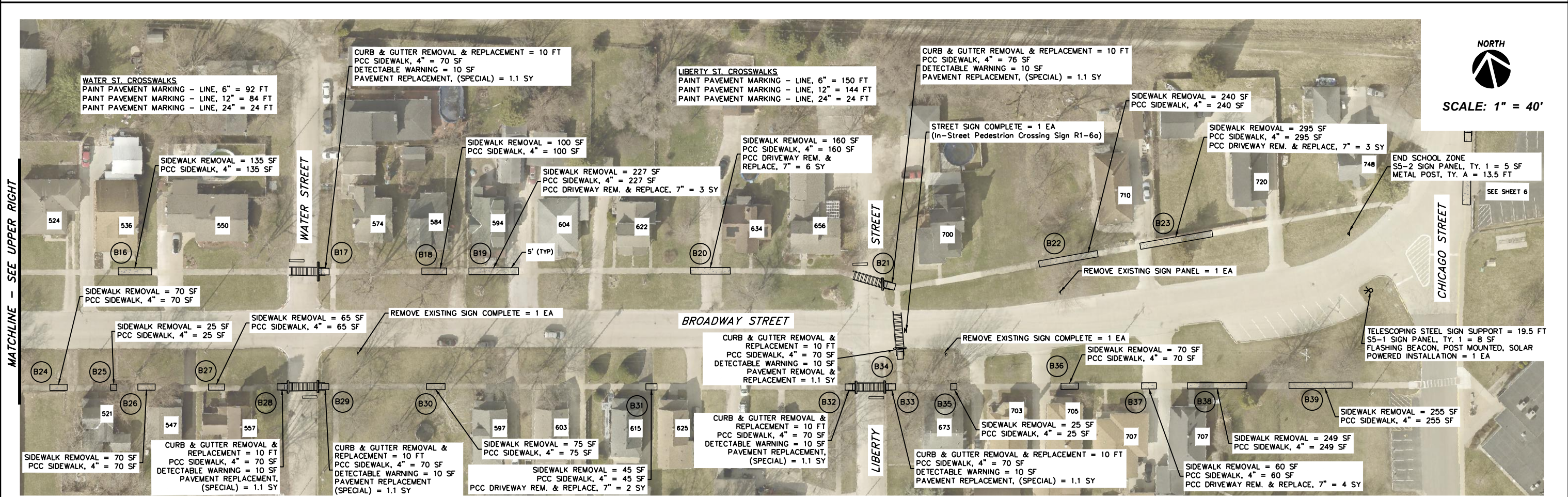


FILE NAME = J:/2057.113A_LINCOLNPLR.DWG	DESIGNED — L.D.C.	REVISED —	ETSCHIED, DUTTLINGER & ASSOCIATES, INC. Professional Engineers & Land Surveyors 1304 Gemini Circle • Ottawa, IL 61350-1692 tel: 815-434-3925 • fax: 815-434-3953	SAFE ROUTES TO SCHOOL SIDEWALK IMPROVEMENTS MARSEILLES, IL	F.A.U. R.T.E.	SECTION	COUNTY	TOTAL SHEETS	SHEET NO.
PLOT DATE = FEBRUARY 5, 2026	DRAWN — L.D.C.	REVISED —			24-00057-00-SW	LASALLE	4	6	
PLOT SCALE = 1"=40'	CHECKED — R.M.S.	REVISED —					PROJECT NO. 013B(661)	JOB NO. C-93-035-26	
	DATE — FEBRUARY 5, 2026	REVISED —					CONTRACT NO. 87909	ILLINOIS	



SCALE: 1" = 40'

MATCHLINE - SEE LOWER LEFT

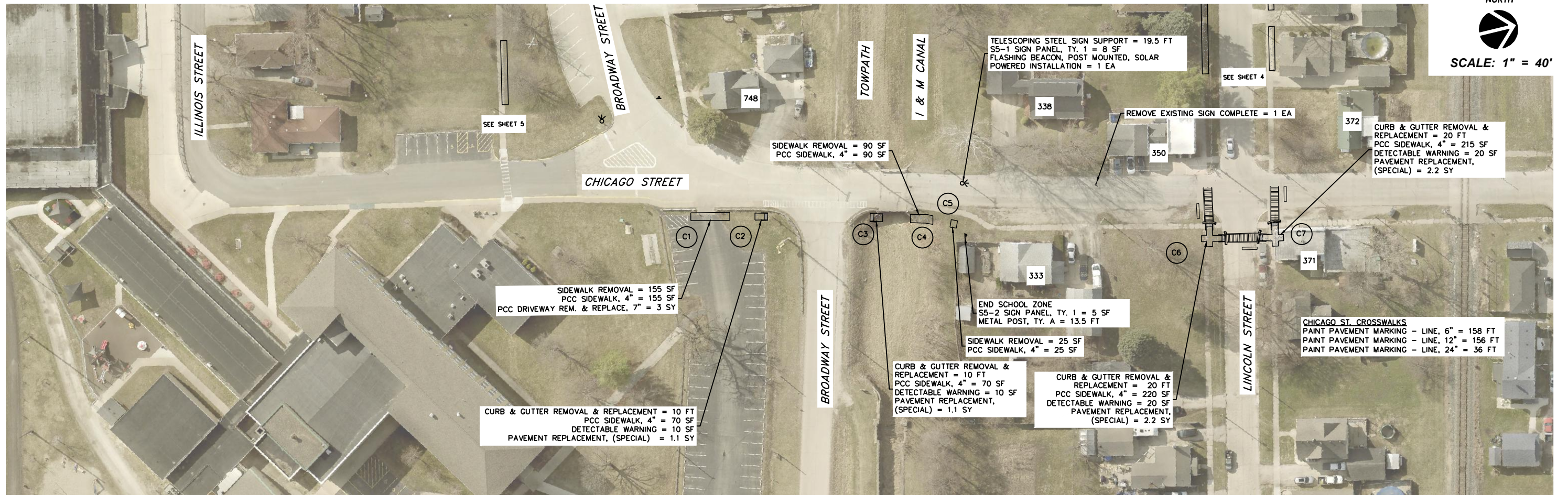


SCALE: 1" = 40'

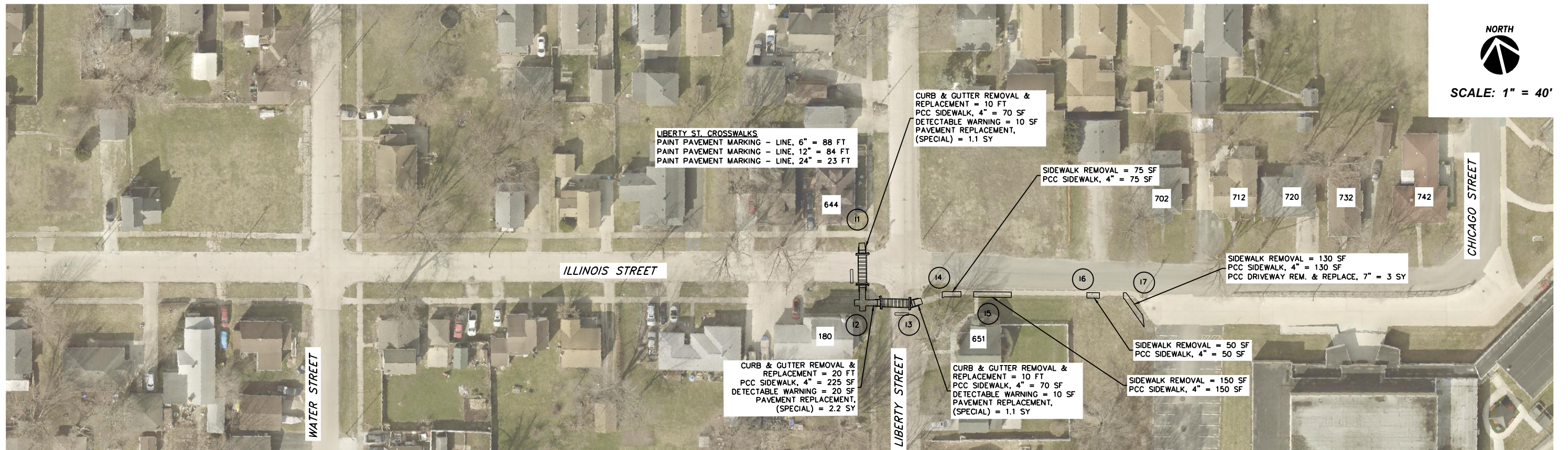
MATCHLINE - SEE UPPER RIGHT

SEE SHEET 6

FILE NAME = J:\2057.113A_BROADWAYPLPR.DWG	DESIGNED - L.D.C.	REVISED -	ETSCHIED, DUTTLINGER & ASSOCIATES, INC. Professional Engineers & Land Surveyors 1304 Gemini Circle • Ottawa, IL 61350-1692 tel: 815-434-3925 • fax: 815-434-3953	SAFE ROUTES TO SCHOOL SIDEWALK IMPROVEMENTS MARSEILLES, IL	F.A.U. R.T.E.	SECTION	COUNTY	TOTAL SHEETS	SHEET NO.
PLOT DATE = FEBRUARY 5, 2026	DRAWN - L.D.C.	REVISED -			24-00057-00-SW	LASALLE	5	6	
PLOT SCALE = 1"=40'	CHECKED - R.M.S.	REVISED -			PROJECT NO. 013B(661)	JOB NO. C-93-035-26			
	DATE - FEBRUARY 5, 2026	REVISED -			CONTRACT NO. 87909	ILLINOIS			



NORTH
SCALE: 1" = 40'



NORTH
SCALE: 1" = 40'

FILE NAME = J:/2057.113A_CHICAGOPLR.DWG

DESIGNED	— L.D.C.	REVISED	—
DRAWN	— L.D.C.	REVISED	—
CHECKED	— R.M.S.	REVISED	—
DATE	— FEBRUARY 5, 2026	REVISED	—



ETSCHIED, DUTTLINGER & ASSOCIATES, INC.

Professional Engineers & Land Surveyors
1304 Gemini Circle • Ottawa, IL 61350-1692
tel: 815-434-3925 • fax: 815-434-3953

SAFE ROUTES TO SCHOOL SIDEWALK IMPROVEMENTS MARSEILLES, IL

F.A.U. RTE.	SECTION	COUNTY	TOTAL SHEETS	SHEET NO.
---	24-00057-00-SW	LASALLE	6	6
PROJECT NO. 013B(661)		JOB NO. C-93-035-26		
CONTRACT NO. 87909 ILLINOIS				