

STATE OF ILLINOIS
DEPARTMENT OF TRANSPORTATION

F.A.I. RTE.	SECTION	COUNTY	TOTAL SHEETS	SHEET NO.
474	90(6,7)RS-2	TAZEWELL	20	1
E11NGS			CONTRACT NO. 68K12	

INDEX OF SHEETS:

- 1 COVER SHEET
- 2 GENERAL AND JOB SPECIFIC NOTES
- 3-5 SUMMARY OF QUANTITIES
- 6-7 SCHEDULE OF QUANTITIES
- 8 LINE DIAGRAM
- 9-10 TYPICAL SECTIONS
- 11-13 PAVEMENT MARKING AND SIGN DETAILS (ROADWAY A)
- 14-16 OVERHEAD SIGN PANEL DETAILS
- 17-18 TRUCK LANE DETAIL
- 19-20 DISTRICT CADD STANDARDS

HIGHWAY STANDARDS:

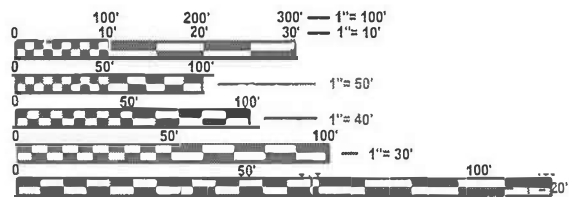
701006-05	720021-03
701400-12	728001-01
701406-13	729001-01
701411-09	780001-05
701426-09	781001-04
701901-11	
720001-01	
720006-04	

DISTRICT STANDARDS:

780001-04

DESIGN DESIGNATION (I-474):
INTERSTATE

ADT = 15,200 (2023)
SU = 575 (3.78%)
MU = 3000 (19.74%)



FULL SIZE PLANS HAVE BEEN PREPARED USING STANDARD ENGINEERING SCALES. REDUCED SIZED PLANS WILL NOT CONFORM TO STANDARD SCALES. IN MAKING MEASUREMENTS ON REDUCED PLANS, THE ABOVE SCALES MAY BE USED.

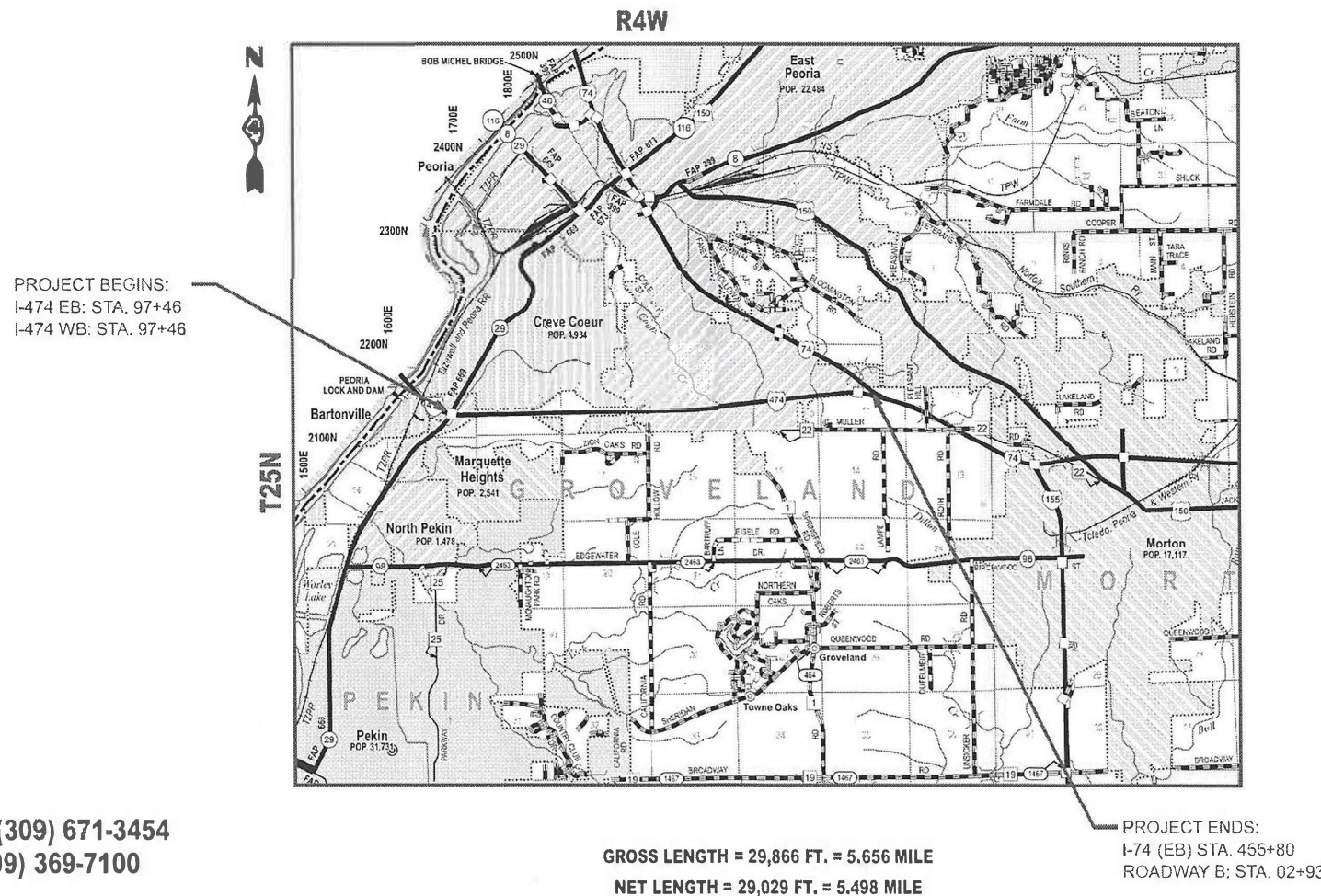
J.U.L.I.E.
JOINT UTILITY LOCATION INFORMATION FOR EXCAVATION
1-800-892-0123
OR 811

PROJECT ENGINEER: REBECCA MARRUFFO (309) 671-3454
PROJECT MANAGER: RAYMOND SAMARA (309) 369-7100
CATALOG NO. 036649-00D
CONTRACT NO. 68K12

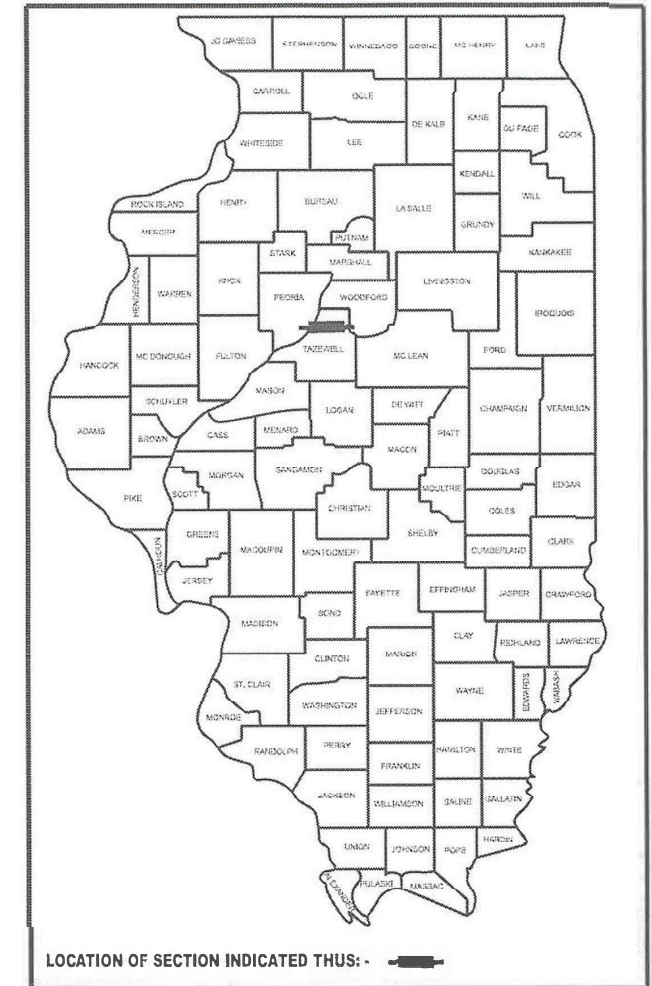
PROPOSED
HIGHWAY PLANS

F.A.I. ROUTE 474 (I-474 / US 24)
SECTION 90(6,7)RS-2
PROJECT NHPP-HSIP-RN4Z(726)
PAVEMENT PRESERVATION
TAZEWELL COUNTY

C-94-061-25



D-94-047-25



PROJECT DESCRIPTION:
MICROSURFACE ON I-474/US 24 FROM ILLINOIS RIVER TO I-74

STATE OF ILLINOIS
DEPARTMENT OF TRANSPORTATION

SUBMITTED Nov. 25 2025
Kenal A. Barnett
REGIONAL ENGINEER

March 20 2026
[Signature]
ENGINEER OF DESIGN AND ENVIRONMENT

March 20 2026
[Signature]
DIRECTOR OF HIGHWAYS PROJECT IMPLEMENTATION

PRINTED BY THE AUTHORITY
OF THE STATE OF ILLINOIS

MODEL: SOQ (Sheet) - 1
 FILE NAME: c:\p\work\wiscobrian.bouris@illinois.gov\107936\0468K12-sh-SOQ.dgn

CODE NO.	ITEM	UNIT	TOTAL QUANTITY	CONSTRUCTION CODE		
				NHPP	HSIP	
				90% FED/ 10% STATE	90% FED/ 10% STATE	
				TAZEWELL COUNTY ROADWAY	TAZEWELL COUNTY SAFETY	
				0005	0021	
** 25000750	MOWING	ACRE	50		50	
40400001	FIBER-MODIFIED ASPHALT CRACK SEALING	FOOT	5000	5000		
40400020	BUMP REMOVAL	EACH	25	25		
40400119	MICRO-SURFACING, 2 PASSES	SQ YD	168093	168093		
40600295	POLYMERIZED BITUMINOUS MATERIALS (TACK COAT)	POUND	37821	37821		
44000151	HOT-MIX ASPHALT SURFACE REMOVAL, 1/2"	SQ YD	168093	168093		
67000400	ENGINEER'S FIELD OFFICE, TYPE A	CAL MO	4	4		
67100100	MOBILIZATION	L SUM	1	1		
70100420	TRAFFIC CONTROL AND PROTECTION, STANDARD 701411	EACH	7	7		
70100700	TRAFFIC CONTROL AND PROTECTION, STANDARD 701406	L SUM	1	1		
70107025	CHANGEABLE MESSAGE SIGN	CAL DA	14	14		
70300100	SHORT TERM PAVEMENT MARKING	FOOT	16810	16810		
70300150	SHORT TERM PAVEMENT MARKING REMOVAL	SQ FT	6848	6848		
* 72000100	SIGN PANEL - TYPE 1	SQ FT	10			10

**MOWING WILL BE 100% STATE FUNDED
 *= SPECIALTY ITEM

USER NAME = Brian.Bouris	DESIGNED -	REVISED -
	DRAWN -	REVISED -
	CHECKED -	REVISED -
PLOT DATE = 11/24/2025	DATE -	REVISED -

**STATE OF ILLINOIS
 DEPARTMENT OF TRANSPORTATION**

SUMMARY OF QUANTITIES

SCALE: SHEET 1 OF 3 SHEETS STA. TO STA.

F.A.I RTE.	SECTION	COUNTY	TOTAL SHEETS	SHEET NO.
474	90(6,7)RS-2	TAZEWELL	20	3
CONTRACT NO. 68K12				
ILLINOIS FED. AID PROJECT				

MODEL: SOQ (Sheet) - 2
 FILE NAME: c:\p\work\wis\obrian.bouris@illinois.gov\107936\0468K12-sh-SOQ.dgn

CODE NO.	ITEM	UNIT	TOTAL QUANTITY	CONSTRUCTION CODE	
				NHPP	HSIP
				90% FED/ 10% STATE	90% FED/ 10% STATE
				TAZEWELL COUNTY ROADWAY 0005	TAZEWELL COUNTY SAFETY 0021
* 72000200	SIGN PANEL - TYPE 2	SQ FT	168		168
* 72000300	SIGN PANEL - TYPE 3	SQ FT	477		477
* 72400200	REMOVE SIGN PANEL ASSEMBLY - TYPE B	EACH	3		3
* 72400330	REMOVE SIGN PANEL - TYPE 3	SQ FT	407		407
	73000100	WOOD SIGN SUPPORT	FOOT	195	195
* 78009000	MODIFIED URETHANE PAVEMENT MARKING - LETTERS AND SYMBOLS	SQ FT	415	166	249
* 78009006	MODIFIED URETHANE PAVEMENT MARKING - LINE 6"	FOOT	256808	249318	7490
* 78009008	MODIFIED URETHANE PAVEMENT MARKING - LINE 8"	FOOT	14646	10918	3728
* 78009012	MODIFIED URETHANE PAVEMENT MARKING - LINE 12"	FOOT	2862	1192	1670
* 78011000	GROOVING FOR RECESSED PAVEMENT MARKING, LETTERS AND SYMBOLS	SQ FT	228	91	137
* 78011035	GROOVING FOR RECESSED PAVEMENT MARKING 7"	FOOT	128404	124659	3745
* 78011045	GROOVING FOR RECESSED PAVEMENT MARKING 9"	FOOT	8591	5459	3132
* 78011065	GROOVING FOR RECESSED PAVEMENT MARKING 13"	FOOT	1803	596	1207
* 78100100	RAISED REFLECTIVE PAVEMENT MARKER	EACH	1028	912	116

*= SPECIALTY ITEM

USER NAME = Brian.Bouris	DESIGNED -	REVISED -
	DRAWN -	REVISED -
	CHECKED -	REVISED -
PLOT DATE = 11/24/2025	DATE -	REVISED -

**STATE OF ILLINOIS
 DEPARTMENT OF TRANSPORTATION**

SUMMARY OF QUANTITIES

SCALE: SHEET 2 OF 3 SHEETS STA. TO STA.

F.A.I RTE.	SECTION	COUNTY	TOTAL SHEETS	SHEET NO.
474	90(6,7)RS-2	TAZEWELL	20	4
CONTRACT NO. 68K12				
ILLINOIS FED. AID PROJECT				

CODE NO.	ITEM	UNIT	TOTAL QUANTITY	CONSTRUCTION CODE	
				NHPP	HSIP
				90% FED/ 10% STATE	90% FED/ 10% STATE
				TAZEWELL COUNTY ROADWAY	TAZEWELL COUNTY SAFETY
				0005	0021
78300200	RAISED REFLECTIVE PAVEMENT MARKER REMOVAL	EACH	1028		116
78300202	PAVEMENT MARKING REMOVAL - WATER BLASTING	SQ FT	923		923
X4060107	BITUMINOUS MATERIALS (FOG SEAL)	POUND	77336	77336	
∅ Z0076600	TRAINEES	HOUR	1,000	1,000	
X4421000	PARTIAL DEPTH PATCHING	TON	166	166	
∅ Z0076604	TRAINEES - TRAINING PROGRAM GRADUATE	HOUR	1,000	1,000	
X4421002	PARTIAL DEPTH PATCHING (SPECIAL)	SQ YD	966	966	

∅ 0042

MODEL: SOQ (Sheet) - 3
FILE NAME: c:\pw\work\wis\tofbrian.bouris@illinois.gov\107936\0468K12-sh-SOQ.dgn

USER NAME = Brian.Bouris	DESIGNED -	REVISED -
	DRAWN -	REVISED -
	CHECKED -	REVISED -
PLOT DATE = 11/24/2025	DATE -	REVISED -

**STATE OF ILLINOIS
DEPARTMENT OF TRANSPORTATION**

SUMMARY OF QUANTITIES

SCALE: SHEET 3 OF 3 SHEETS STA. TO STA.

F.A.I RTE.	SECTION	COUNTY	TOTAL SHEETS	SHEET NO.
474	90(6,7)RS-2	TAZEWELL	20	5
CONTRACT NO. 68K12				
ILLINOIS FED. AID PROJECT				

MICRO-SURFACING TABLE											
LOCATION		REMARKS		LENGTH	WIDTH	AREA	MICRO-SURFACE (2 PASSES)	HMA SURF. REMOVAL 1/2"	POLY BITUMINOUS MATERIALS (TACK COAT)	BITUMINOUS MATERIALS (FOG SEAL)	
									0.025 LB/SQ FT	0.08 LB/SQ FT	
				FT.	FT.	SQ. YD.	SQ. YD.	SQ. YD.	POUND	POUND	
I-474 EASTBOUND											
STA.	97+46	TO	114+87		1,741	24	4,642.7	4,642.7	4,642.7	1,044.6	2,228.5
STA.	114+87	TO	117+25	OMISSION S.N. 090-0106	238						
STA.	117+25	TO	134+79		1,754	24	4,677.3	4,677.3	4,677.3	1,052.4	2,340.5
STA.	134+79	TO	221+52		8,673	36	34,692.0	34,692.0	34,692.0	7,805.7	13,817.4
STA.	221+52	TO	227+51	WIDTH VARIES 24'-36'	599	30	1,996.7	1,996.7	1,996.7	449.3	1,614.4
STA.	227+51	TO	317+16		8,965	24	23,906.7	23,906.7	23,906.7	5,379.0	11,778.9
STA.	317+16	TO	319+50		234	27	702.0	702.0	702.0	158.0	222.7
STA.	319+50	TO	333+59	WIDTH VARIES 24'-56'	1,409	24	3,757.3	3,757.3	3,757.3	845.4	1,127.2
I-474 WESTBOUND											
STA.	97+46	TO	98+16		70	24	186.7	186.7	186.7	42.0	86.1
STA.	98+16	TO	114+45	WIDTH VARIES 24'-38'	1,629	31	5,611.0	5,611.0	5,611.0	1,262.5	1,745.6
STA.	114+45	TO	115+15		70	38	295.6	295.6	295.6	66.5	67.2
STA.	115+15	TO	117+60	OMISSION S.N. 090-0107	245						
STA.	117+60	TO	118+30		70	44	342.2	342.2	342.2	77.0	57.6
STA.	118+30	TO	237+84		11,954	24	31,877.3	31,877.3	31,877.3	7,172.4	15,776.0
STA.	237+84	TO	238+44		60	32	213.3	213.3	213.3	48.0	76.8
STA.	238+44	TO	318+31		7,987	24	21,298.7	21,298.7	21,298.7	4,792.2	10,383.4
I-474/I-74 INTERCHANGE											
ROADWAY A											
STA.	00+00	TO	53+25		5,325	24	14,200.0	14,200.0	14,200.0	3,195.0	6,659.5
ROADWAY B											
STA.	02+93	TO	03+03		10	24	26.7	26.7	26.7	6.0	4.8
STA.	03+03	TO	04+88		185	34	698.9	698.9	698.9	157.3	88.8
STA.	04+88	TO	21+62		1,674	24	4,464.0	4,464.0	4,464.0	1,004.1	2,141.4
STA.	21+62	TO	25+16	OMISSION S.N. 090-0102	354						
STA.	25+16	TO	79+55		5,439	24	14,504.0	14,504.0	14,504.0	3,263.4	6,902.4
MEDIAN CROSSOVER											
STA.	207+55			MEDIAN CROSSOVER			127.8				92.0
STA.	307+62			MEDIAN CROSSOVER			173.3				124.8
TOTAL							168,093.0	168,093.0	37,820.9	77,336.0	

PATCHING TABLE									
LOCATION		DRIVING LANE	PASSING LANE	LENGTH	WIDTH	NUMBER OF PATCHES	PARTIAL DEPTH PATCHING (SPECIAL)		PARTIAL DEPTH PATCHING
							2" REMOVAL	4.5" REMOVAL	
							SQ. YD.	SQ. YD.	
I-474 EASTBOUND									
		X		6	12	0.0		64.0	16.1
		X		20	12	2.0		53.4	13.5
			X	6	12	7.0		56.0	14.1
			X	10	12	2.0		27.0	6.8
STA.	136+70		X	50	12	1.0	67.0		7.5
STA.	149+20		X	50	12	1.0	67.0		7.5
STA.	256+35	X		50	12	1.0	67.0		7.5
STA.	259+10		X	50	12	1.0	67.0		7.5
STA.	316+65	X		50	12	1.0	67.0*		7.5
I-474 WESTBOUND									
		X		6	12	7.0		56.0	14.1
			X	6	12	4.0		32.0	8.1
			X	12	12	1.0		16.0	4.0
STA.	114+70	X	X	50	12	2.0	133.0		14.9
STA.	124+00	X		50	12	1.0	67.0		7.5
STA.	130+30	X		50	12	1.0	67.0		7.5
SUBTOTAL							839.4	144.1	
15% WINTER BREAK							125.9	21.6	
TOTAL							965.3	165.7	

SHORT TERM PAVEMENT MARKING SCHEDULE								
LOCATION			LENGTH	SHORT TERM PAVEMENT MARKING			SHORT TERM PAVEMENT MARKING REMOVAL	
				SKIP DASH	SHOULDER DIAGONALS	SKIP DASH	SHOULDER DIAGONALS	
			FT.	FT.	FT.	SQ. FT.	SQ. FT.	
I-474 EASTBOUND								
STA.	97+46.0	TO	114+87.0	1741.0	316.0	140.0	35.1	46.7
STA.	114+87.0	TO	117+25.0					
STA.	117+25.0	TO	135+12.0	1787.0	324.0	142.0	36.0	155.3
STA.	135+12.0	TO	221+52.0	8040.0	3140.0	692.0	348.9	1277.3
STA.	221+52.0	TO	333+59.0	11207.0	2038.0	896.0	226.4	978.0
I-474 WESTBOUND								
STA.	97+46.0	TO	115+15.0	1769.0	322.0	142.0	35.8	154.7
STA.	115+15.0	TO	117+60.0					
STA.	117+60.0	TO	318+31.0	20071.0	3650.0	1606.0	405.6	1752.0
I-474 / I-74 INTERCHANGE								
ROADWAY A								
STA.	0+00.0	TO	53+25.0	5325.0	968.0	426.0	107.6	464.7
ROADWAY B								
STA.	2+83.0	TO	79+55.0	7672.0	1394.0	614.0	154.9	669.3
SUBTOTAL					12,152.0	4,658.0	1,350.2	5,498.0
TOTAL					16,810.0		6,848.0	

GROUND MOUNT SIGN SCHEDULE				
LOCATION	SIGN PANEL - TYPE 1	SIGN PANEL - TYPE 2	WOODEN SIGN SUPPORT	REMOVE SIGN PANEL ASSEMBLY TYPE B
	SQ. FT.	SQ. FT.	FT.	EACH
I-474 / I-74 INTERCHANGE				
I-474 EASTBOUND				
STA.	128+00.0		32.0	1.0
SEE SHT. NO. 17				
			24.0	
SEE SHT. NO. 18				
			16.0	
ROADWAY A				
STA.	18+00.0	10.0	32.0	
STA.	30+50.0		32.0	
STA.	48+00.0			1.0
STA.	49+34.0		16.0	
I-74 EASTBOUND				
STA.	437+22.0			1.0
STA.	439+24.0		16.0	
SUBTOTAL				3.0
TOTAL				3.0

OVERHEAD SIGN PANEL SCHEDULE		
LOCATION	REMOVE SIGN PANEL - TYPE 3	SIGN PANEL - TYPE 3
	SQ. FT.	FT.
OVERHEAD SIGN SIGN STRUCTURE		
4S090474R013.10	406.5	476.5
SUBTOTAL		476.5
TOTAL		477.0

PAVEMENT MARKING REMOVAL TABLE			
LOCATION	PAVEMENT MARKING REMOVAL - WATER BLASTING		
	6" SQ. FT.	8" SQ. FT.	
I-474/I-74 INTERCHANGE			
ROADWAY A			
STA.	51+44.0	TO	53+25.0
			120.7
I-74 EASTBOUND			
STA.	443+12.0	TO	447+94.0
			60.0
STA.	447+94.0	TO	455+80.0
			100.0
SUBTOTAL			763.4
TOTAL			923.0

MODEL: Schedule (Sheet) - 1
FILE NAME: c:\paw_bouris\work\68k12\sh-schedule.dgn

USER NAME = Brian.Bouris	DESIGNED -	REVISED -
	DRAWN -	REVISED -
	CHECKED -	REVISED -
PLOT DATE = 11/24/2025	DATE -	REVISED -

STATE OF ILLINOIS
DEPARTMENT OF TRANSPORTATION

SCHEDULE OF QUANTITIES

SCALE: SHEET 1 OF 2 SHEETS STA. TO STA.

F.A.I. RTE.	SECTION	COUNTY	TOTAL SHEETS	SHEET NO.
474	90(6,7)R-2	TAZEWELL	20	6
CONTRACT NO. 68K12				
ILLINOIS FED. AID PROJECT				

PAVEMENT MARKING TABLE																			
LOCATION	MODIFIED URETHANE PAVEMENT MARKING													RAISED REFLECTIVE PAVEMENT MARKERS		RAISED REFLECTIVE MARKER REMOVAL			
	LINE 6"			GROOVING FOR RECESSED PVT MKG 7"	LINE 8"		GROOVING FOR RECESSED PVT MKG 9"	LINE 12"		GROOVING FOR RECESSED PVT MKG 13"	LETTERS AND SYMBOLS		GROOVING FOR RECESSED PVT MKG - LETTERS AND SYMBOLS	ONE WAY CRYSTAL EACH	ONE WAY AMBER EACH				
	SOLID (WHITE) FT.	SOLID (YELLOW) FT.	SKIP (WHITE) FT.		SOLID FT.	SKIP FT.		WHITE FT.	YELLOW FT.		QTY & SYMBOL	SQ. FT.					SQ. FT.		
I-474 EASTBOUND																			
STA.	97+46.0	TO	99+24.0	178.0	178.0	44.5	400.5												
STA.	99+24.0	TO	101+72.0		248.0	62.0	310.0										3.0		
STA.	101+72.0	TO	105+25.0		353.0	88.3	441.3	353.0									4.0		
STA.	105+25.0	TO	114+87.0	962.0	962.0	240.5	2,164.5										15.0		
STA.	114+87.0	TO	117+25.0														13.0		
STA.	117+25.0	TO	128+63.0	1,138.0	1,138.0	284.5	2,560.5										15.0		
STA.	128+63.0	TO	133+35.0		472.0	118.0	590.0	472.0									6.0		
STA.	133+35.0	TO	135+12.0		177.0	44.3	221.3		45.0	45.0							3.0		
STA.	135+12.0	TO	221+52.0	8,640.0	8,640.0	4,320.0	21,600.0				2 LANE DROP ARROWS	83.0	91.0				216.0		
STA.	221+52.0	TO	227+51.0	599.0	599.0	149.8	1,347.8		150.0	150.0							8.0		
STA.	227+51.0	TO	324+81.0	9,730.0	9,730.0	2,432.5	21,892.5										122.0		
STA.	324+81.0	TO	333+59.0	878.0	878.0	219.5	1,975.5	1,756.0		1,756.0	387.0		387.0				55.0		
I-474 WESTBOUND																			
STA.	97+46.0	TO	99+58.0	212.0	212.0	53.0	477.0										3.0		
STA.	99+58.0	TO	106+06.0	648.0	648.0	162.0	1,458.0		162.0	162.0							9.0		
STA.	106+06.0	TO	110+82.0		476.0	119.0	595.0	476.0		476.0							6.0		
STA.	110+82.0	TO	115+15.0	433.0	433.0	108.3	974.3										6.0		
STA.	115+15.0	TO	117+60.0																
STA.	117+60.0	TO	122+19.0		459.0	114.8	573.8	459.0		459.0							6.0		
STA.	122+19.0	TO	131+20.0	901.0	901.0	225.3	2,027.3										12.0		
STA.	131+20.0	TO	134+79.0		359.0	89.8	448.8	359.0		359.0							14.0		
STA.	134+79.0	TO	137+15.0	236.0	236.0	59.0	531.0		60.0	60.0							3.0		
STA.	137+15.0	TO	318+31.0	18,116.0	18,116.0	4,529.0	40,761.0										227.0		
I-474/I-74 INTERCHANGE ROADWAY A																			
STA.	0+00.0	TO	1+42.0	142.0		35.5	177.5	142.0		142.0	208.6		208.6				6.0		
STA.	1+42.0	TO	3+54.0	212.0	212.0	53.0	477.0										3.0		
STA.	3+54.0	TO	33+62.0	3,008.0	3,008.0	752.0	6,768.0										38.0		
STA.	33+62.0	TO	43+00.0	938.0	938.0	1,876.0		234.0	234.0		241.6	241.6	3 LANE DROP ARROWS	124.5	136.5		5.0		
STA.	43+00.0	TO	51+44.0	844.0	844.0		1,688.0										42.0		
STA.	51+44.0	TO	53+25.0	181.0		181.0	362.0	362.0		221.8		221.8					10.0		
I-74 EASTBOUND ROADWAY B																			
STA.	443+12.0	TO	455+80.0				2,536.0	2,536.0		743.5		743.5					63.0		
STA.	2+93.0	TO	4+51.0		158.0	39.5	197.5	158.0		158.0							6.0		
STA.	4+51.0	TO	53+15.0	4,864.0	4,864.0	1,216.0	10,944.0										61.0		
STA.	53+15.0	TO	58+43.0		528.0	132.0	660.0	528.0		528.0							20.0		
STA.	58+43.0	TO	65+10.0		667.0	166.8	833.8		168.0	168.0							9.0		
STA.	65+10.0	TO	79+55.0	1,445.0	1,445.0	361.3	3,251.3										19.0		
SUBTOTAL				54,305.0	57,879.0	16,219.8	128,403.8	7,601.0	990.0	8,591.0	1,560.9	241.6	1,802.5		207.5	227.5	981.0	47.0	1028.0
2ND APPLICATION ON MICROSURFACE				54,305.0	57,879.0	16,219.8		5,065.0	990.0		817.4	241.6			207.5				
TOTAL					256,808.0		128,404.0		14,646.0	8,591.0		2,862.0	1,803.0		415.0	228.0		1,028.0	1028.0

JOBSITE TABLE						
LOCATION	MOWING	ENGINEER'S FIELD OFFICE, TYPE A	MOBILIZATION	CHANGEABLE MESSAGE SIGN*	TRAFFIC CONTROL AND PROTECTION, STANDARD 701411	TRAFFIC CONTROL AND PROTECTION, STANDARD 701406
	ACRE	CAL MO	LSUM	CAL DA	EACH	LSUM
I-474						
JOBSITE	50.0	4.0	1.0	14.0	7.0	1.0
TOTAL	50.0	4.0	1.0	14.0	7.0	1.0

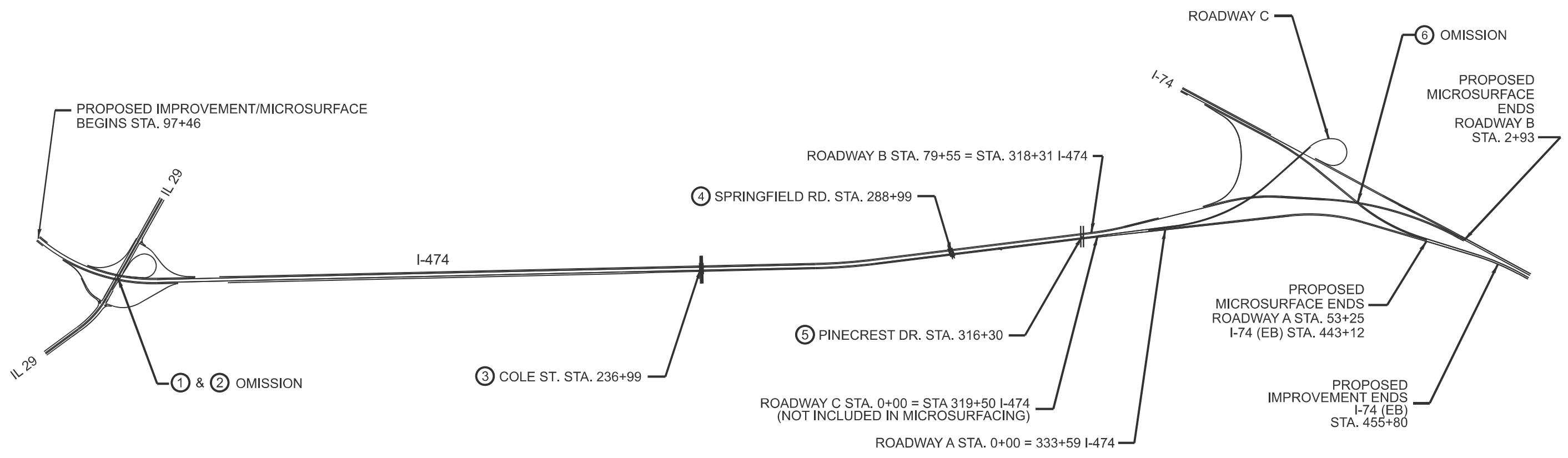
*2 BOARDS @ 7 DAYS EACH

FIBER MODIFIED ASPHALT CRACK SEALING		
LOCATION	LENGTH	
	FT	
TAZEWELL COUNTY	I-474	5,000
TOTAL		5,000

*ROUT AND SEAL TRANSVERSE (WORKING) CRACKS AND SEAL LONGITUDINAL CRACKS

BUMP REMOVAL		
LOCATION	EACH	
TAZEWELL COUNTY	I-474	25
TOTAL		25

MODEL: Schedule (Sheet) - 2
FILE NAME: c:\pw\work\wv\brbrian.bouris@illinois.gov\107936\0468K12-sh-schedule.dgn



EXISTING STRUCTURES

- ① I-474 E.B. over IL 29
S.N. 090-0106
- ② I-474 W.B. over IL 29
S.N. 090-0107
- ③ Cole St. over I-474
S.N. 090-0105
- ④ Springfield Rd. over I-474
S.N. 090-0104
- ⑤ Pinecrest Dr. over I-474
S.N. 090-0103
- ⑥ Roadway B over I-74 (E.B.)
S.N. 090-0102

NOT TO SCALE

MODEL: General Notes (Sheet)
FILE NAME: c:\pwworking\ibrian.bouris@illinois.gov\107936\0468K12-sh1-LineDiagram.dgn

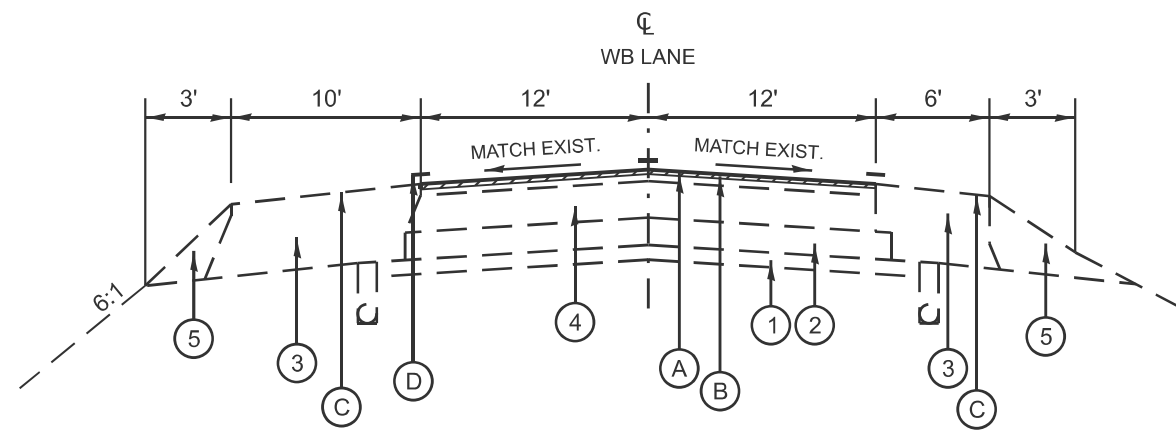
USER NAME = Brian.Bouris	DESIGNED -	REVISED -
	DRAWN -	REVISED -
	CHECKED -	REVISED -
PLOT DATE = 10/14/2025	DATE -	REVISED -

**STATE OF ILLINOIS
DEPARTMENT OF TRANSPORTATION**

LINE DIAGRAM

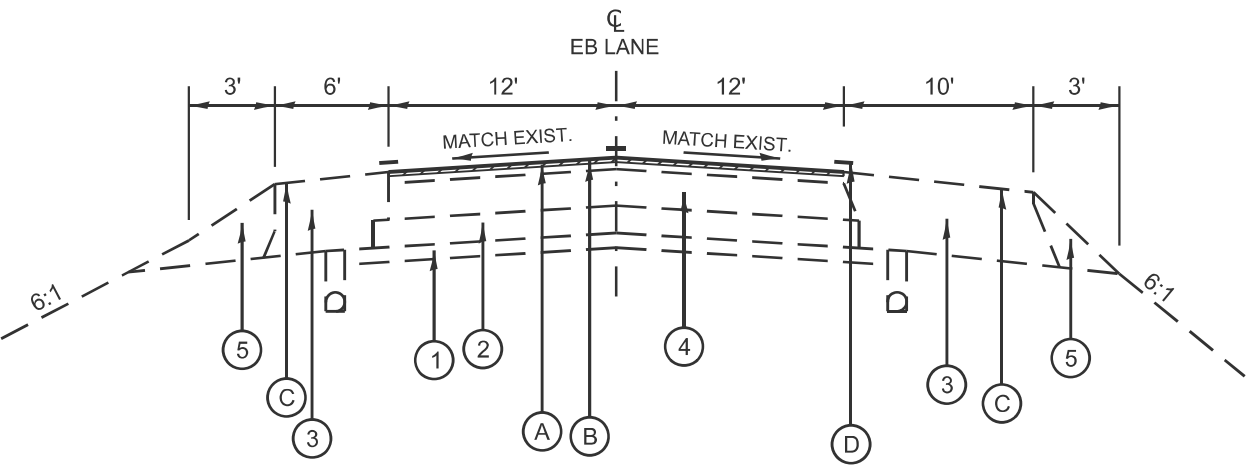
SCALE: SHEET 1 OF 1 SHEETS STA. TO STA.

F.A.I RTE.	SECTION	COUNTY	TOTAL SHEETS	SHEET NO.
474	90(6,7)RS-2	TAZEWELL	20	8
CONTRACT NO. 68K12				
ILLINOIS FED. AID PROJECT				

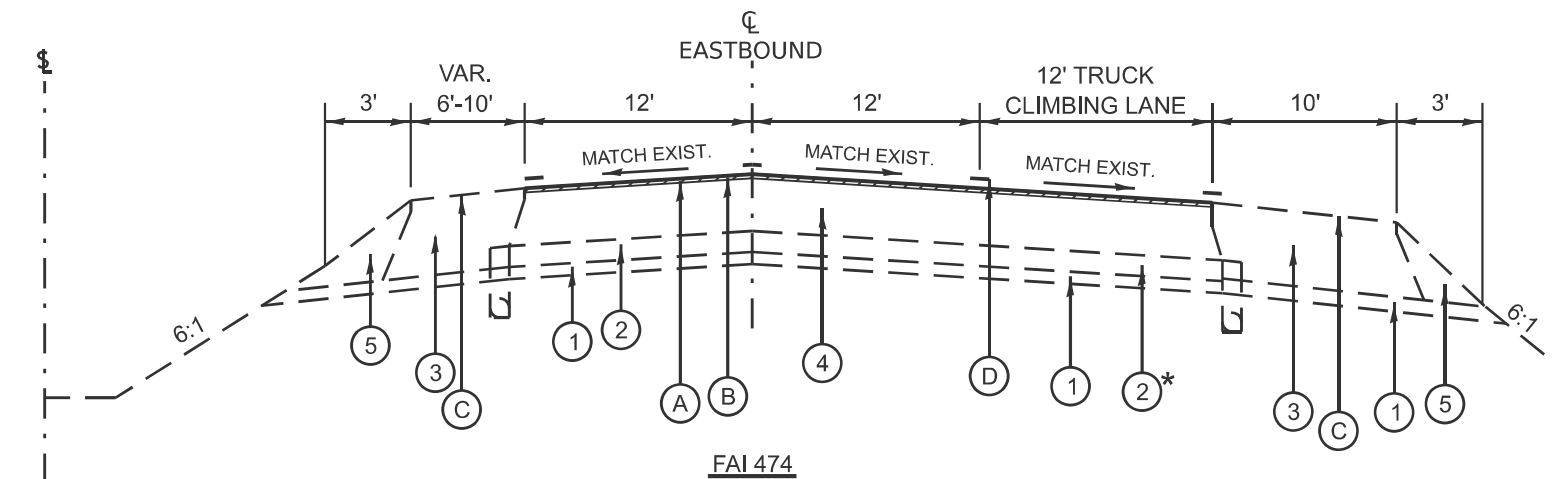


FAI 474

EB STA. 97+46 TO STA. 134+80
 EB STA. 227+50 TO STA. 333+59
 WB STA. 97+46 TO STA. 318+31



FAI 474



FAI 474

EB STA. 134+80 TO STA. 227+50
 * EX. CONTINUOUSLY REINFORCED P.C.C. PAVEMENT 8"

LEGEND

- ① EX. STABILIZED SUB-BASE
- ② EX. CONTINUOUSLY REINFORCED P.C.C. PAVEMENT 9"
- ③ EX. HMA SHOULDER, 15.5" ±
- ④ EX. HMA OVERLAY 6.5" ±
- ⑤ EX. AGGREGATE SHOULDER TYPE B

- (A) PROP. HMA SURF REMOVAL 0.5"
- (B) PROP. MICROSURFACING (2 PASSES)
- (C) PROP. FOG SEAL
- (D) PROP. PAVEMENT MARKINGS

DRAWING NOT TO SCALE

MODEL: Typical Sections (Sheet)-1
 FILE NAME: c:\p\work\68k12\typical-10.dgn

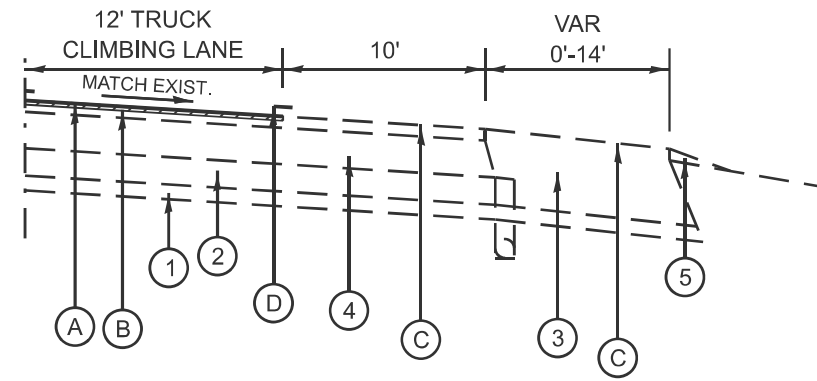
USER NAME = Brian.Bouris	DESIGNED -	REVISED -
	DRAWN -	REVISED -
	CHECKED -	REVISED -
PLOT DATE = 11/24/2025	DATE -	REVISED -

STATE OF ILLINOIS
 DEPARTMENT OF TRANSPORTATION

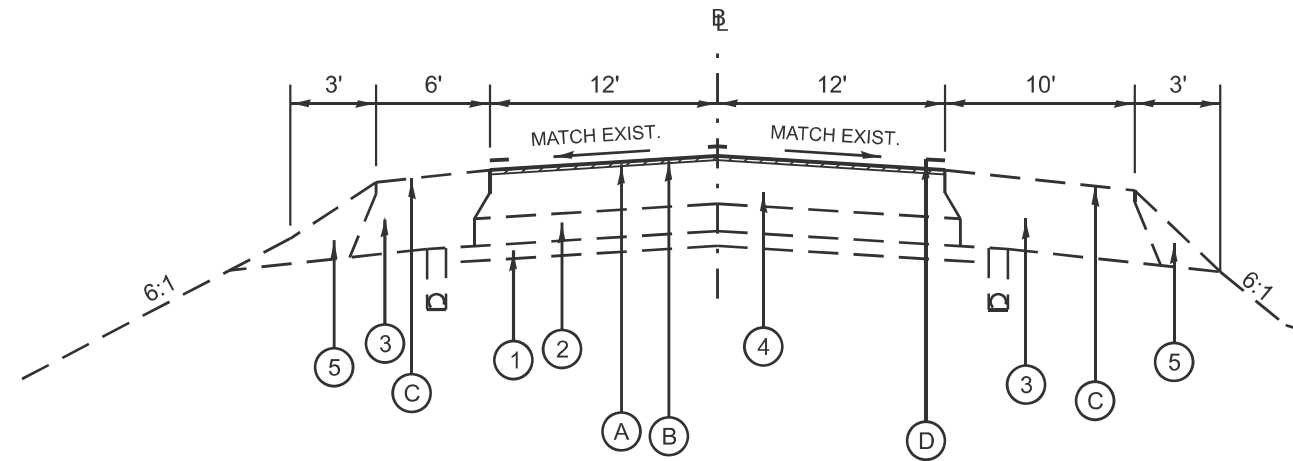
TYPICAL SECTIONS

SCALE: SHEET 1 OF 2 SHEETS STA. TO STA.

F.A.I. RTE.	SECTION	COUNTY	TOTAL SHEETS	SHEET NO.
474	90(6,7)RS-2	TAZEWELL	20	9
CONTRACT NO. 68K12				
ILLINOIS FED. AID PROJECT				



EB & WB (SCALE AREA)
STA. 197+00 TO STA. 209+50



FAI 474 / FAI 74
ROADWAY A STA. 00+00 TO STA. 53+25
ROADWAY B STA. 2+93 TO STA. 79+55

LEGEND

- ① EX. STABILIZED SUB-BASE
- ② EX. CONTINUOUSLY REINFORCED P.C.C. PAVEMENT 9"
- ③ EX. HMA SHOULDER, 15.5" ±
- ④ EX. HMA OVERLAY 6.5" ±
- ⑤ EX. AGGREGATE SHOULDER TYPE B

- A PROP. HMA SURF REMOVAL 0.5"
- B PROP. MICROSURFACING (2 PASSES)
- C PROP. FOG SEAL
- D PROP. PAVEMENT MARKINGS

DRAWING NOT TO SCALE

MODEL: Typical Sections (Sheet)_2
FILE NAME: c:\p\work\68k12\typical-10.dgn

USER NAME = Brian.Bouris	DESIGNED -	REVISED -
	DRAWN -	REVISED -
	CHECKED -	REVISED -
PLOT DATE = 11/24/2025	DATE -	REVISED -

STATE OF ILLINOIS
DEPARTMENT OF TRANSPORTATION

TYPICAL SECTIONS

SCALE: SHEET 2 OF 2 SHEETS STA. TO STA.

F.A.I RTE.	SECTION	COUNTY	TOTAL SHEETS	SHEET NO.
474	90(6,7)RS-2	TAZEWELL	20	10
CONTRACT NO. 68K12				
ILLINOIS FED. AID PROJECT				

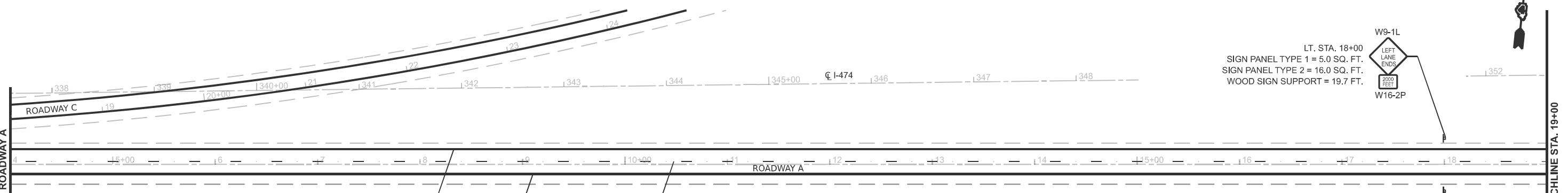
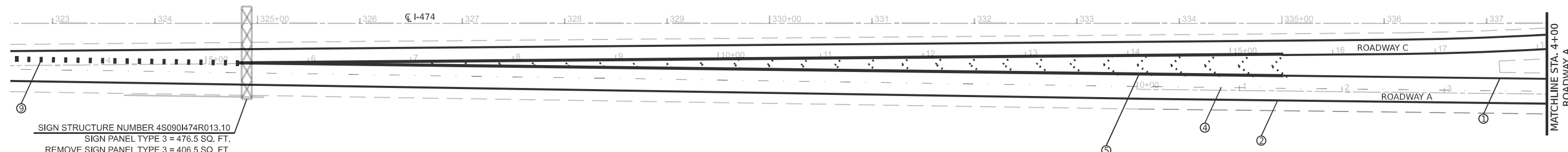


EXISTING OVERHEAD SIGN STRUCTURE PANEL



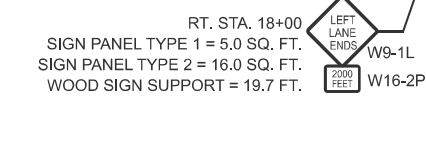
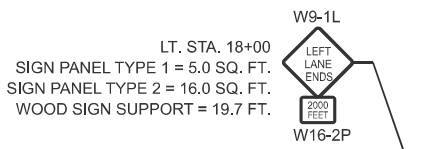
PROPOSED OVERHEAD SIGN STRUCTURE PANEL

(SEE OVERHEAD SIGN PANEL DETAIL SHEETS FOR PROPOSED PANELS)



PAVEMENT MARKING LEGEND

①	6 solid (Yellow)	
②	6 solid (White)	
③	6 skip dash (Yellow)	
④	6 skip dash (White)	
⑤	8 solid (White)	
⑥	12 diagonal (White)	30' (>45 MPH) 20' (<45 MPH)
⑦	24 stop bar (White)	
⑧	Letters and arrows	
⑨	8 skip dash (White)	
⑩	12 diagonal (Yellow)	30' (>45 MPH) 20' (<45 MPH)



MODEL: EXCL8 - Plan 1 [Sheet]
FILE NAME: c:\pwworkspace\brbouris@illinois.gov\107936\0468K12-sh-PVT Mkt and Sign_Plan.dgn

USER NAME = Brian.Bouris	DESIGNED -	REVISED -
	DRAWN -	REVISED -
	CHECKED -	REVISED -
PLOT DATE = 11/24/2025	DATE -	REVISED -

**STATE OF ILLINOIS
DEPARTMENT OF TRANSPORTATION**

PAVEMENT MARKING AND SIGN DETAILS	
ROADWAY A	
SCALE: 1"=50'	SHEET 1 OF 3 SHEETS
STA. 322+58.58	TO STA. 337+58.58

F.A.I. RTE.	SECTION	COUNTY	TOTAL SHEETS	SHEET NO.
474	90(6,7)RS-2	TAZEWELL	20	11
CONTRACT NO. 68K12				
ILLINOIS FED. AID PROJECT				

MATCHLINE STA. 19+00.00

MATCHLINE STA. 34+00.00

PAVEMENT MARKING LEGEND

① 6 solid (Yellow)	
② 6 solid (White)	
③ 6 skip dash (Yellow)	
④ 6 skip dash (White)	
⑤ 8 solid (White)	
⑥ 12 diagonal (White)	
⑦ 24 stop bar (White)	
⑧ Letters and arrows	
⑨ 8 skip dash (White)	
⑩ 12 diagonal (Yellow)	

LT. STA. 30+50
SIGN PANEL TYPE 2 = 16.0 SQ. FT.
WOOD SIGN SUPPORT = 17.7 FT.



⑨ STA. 33+62 TO STA. 43+00
SKIP DASH PAVEMENT MARKING

⑧ STA. 33+62
LANE DROP ARROW

RT. STA. 30+50
SIGN PANEL TYPE 2 = 16.0 SQ. FT.
WOOD SIGN SUPPORT = 17.7 FT.



MATCHLINE STA. 34+00.00

MATCHLINE STA. 49+00.00

EB I-74 STA. 437+22 AND ROADWAY A STA. 48+00
REMOVE SIGN PANEL ASSEMBLY TYPE B
= 2.0 EACH

MODEL: EXCL8 - Plan 3 [Sheet]
FILE NAME: c:\pwwork\wv\isobrian.bouris@illinois.gov\107936\0468K12-sh-PVT Mkt and Sign_Plan.dgn

USER NAME = Brian.Bouris	DESIGNED -	REVISED -
	DRAWN -	REVISED -
	CHECKED -	REVISED -
PLOT DATE = 11/24/2025	DATE -	REVISED -

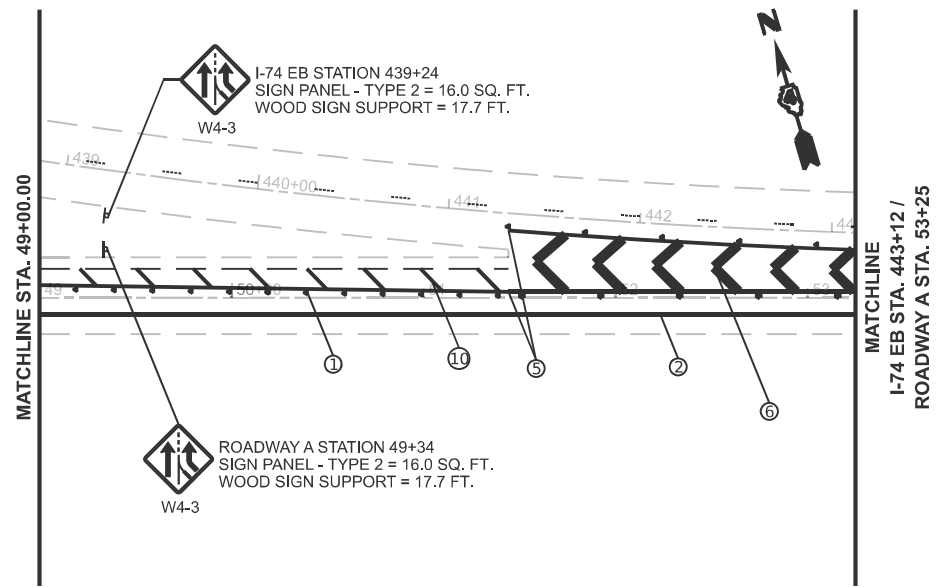
STATE OF ILLINOIS
DEPARTMENT OF TRANSPORTATION

PAVEMENT MARKING AND SIGN DETAILS
ROADWAY A

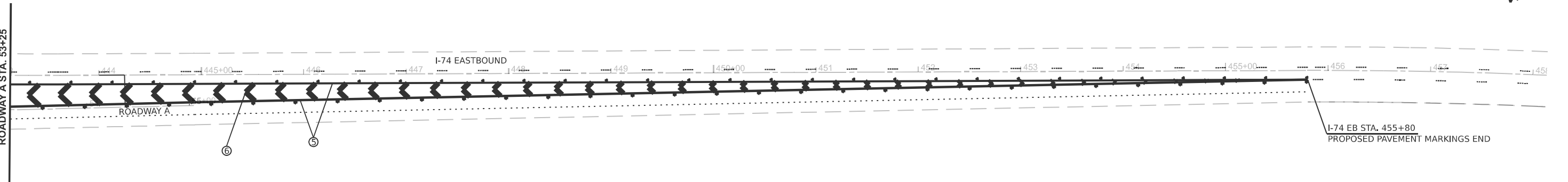
SCALE: 1"=50' SHEET 2 OF 3 SHEETS STA. 19+00.00 TO STA. 49+00.00

F.A.I. RTE.	SECTION	COUNTY	TOTAL SHEETS	SHEET NO.
474	90(6,7)RS-2	TAZEWELL	20	12
CONTRACT NO. 68K12				
ILLINOIS FED. AID PROJECT				

PAVEMENT MARKING LEGEND	
①	6 solid (Yellow)
②	6 solid (White)
③	6 skip dash (Yellow)
④	6 skip dash (White)
⑤	8 solid (White)
⑥	12 diagonal (White)
⑦	24 stop bar (White)
⑧	Letters and arrows
⑨	8 skip dash (White)
⑩	12 diagonal (Yellow)



MODEL: EXC18 - Plan 5 (Sheet)
 FILE NAME: c:\pwwork\bwisobrian.bouris@illinois.gov\107936\68K12-sh-pvt\Mk and Sign_Plan.dgn

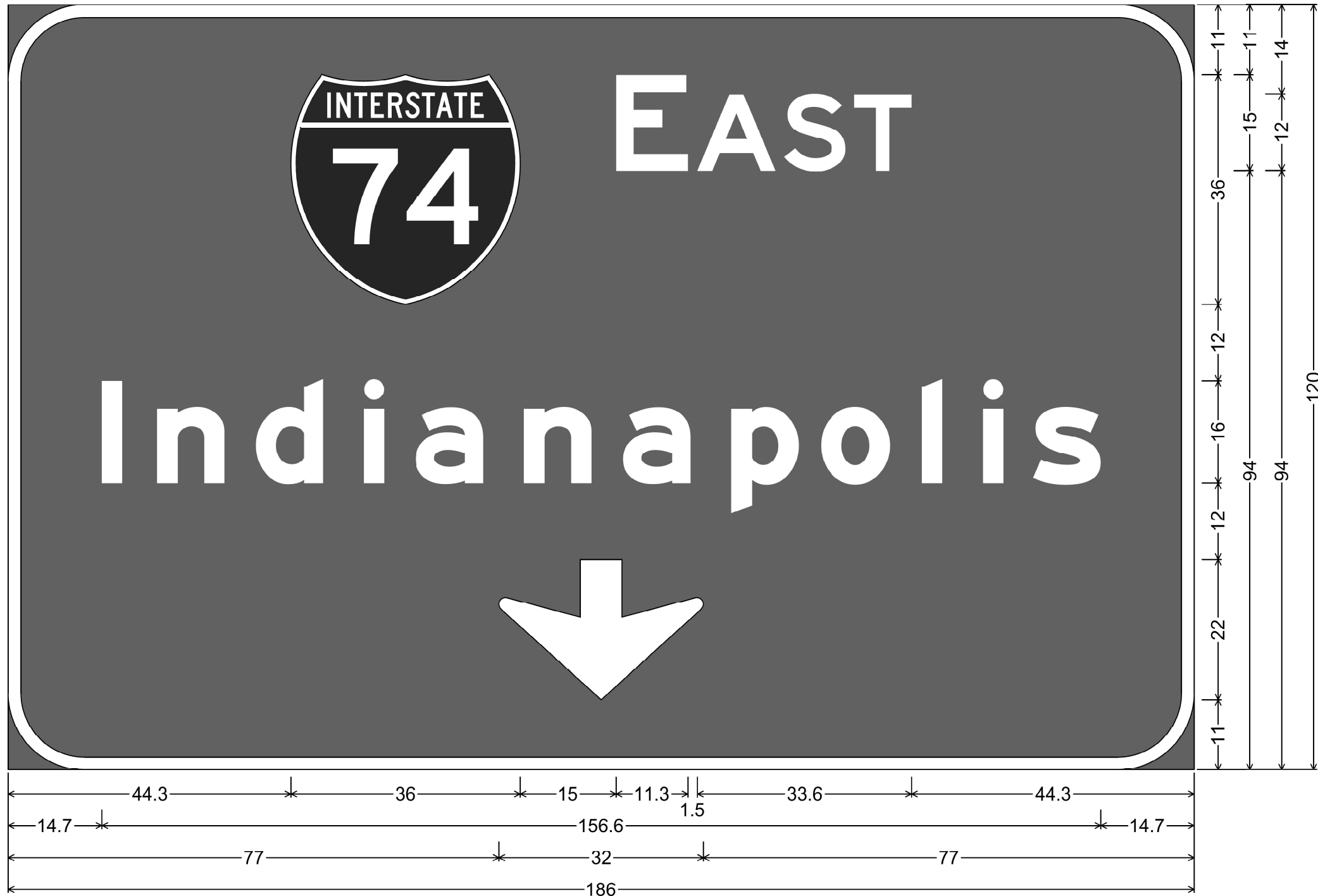


USER NAME = Brian.Bouris	DESIGNED -	REVISED -
	DRAWN -	REVISED -
	CHECKED -	REVISED -
PLOT DATE = 11/24/2025	DATE -	REVISED -

STATE OF ILLINOIS
DEPARTMENT OF TRANSPORTATION

PAVEMENT MARKING AND SIGN DETAILS			
ROADWAY A			
SCALE: 1"=50'	SHEET 3	OF 3 SHEETS	STA. 49+00.00 TO STA. 73+13.50

F.A. I RTE.	SECTION	COUNTY	TOTAL SHEETS	SHEET NO.
474	90(6,7)RS-2	TAZEWELL	20	13
CONTRACT NO. 68K12				
ILLINOIS FED. AID PROJECT				



12.0" Radius, 2.0" Border, White on Green;
 "EAST", E 2K; "Indianapolis", E Mod 2K; Down Arrow 22.0" 270°;
 Table of distances between letter and object lefts

44.3		E	A	S	T	44.3							
14.7	8.6	15.5	17.0	8.2	16.9	15.5	17.0	14.1	15.8	9.6	7.9	10.5	14.7
77.0		77.0											

MODEL: Detail (Sheet)-1
 FILE NAME: c:\p\work\wv\tofbrian.bouris@illinois.gov\107936\0468K12-sh-SignDetails.dgn

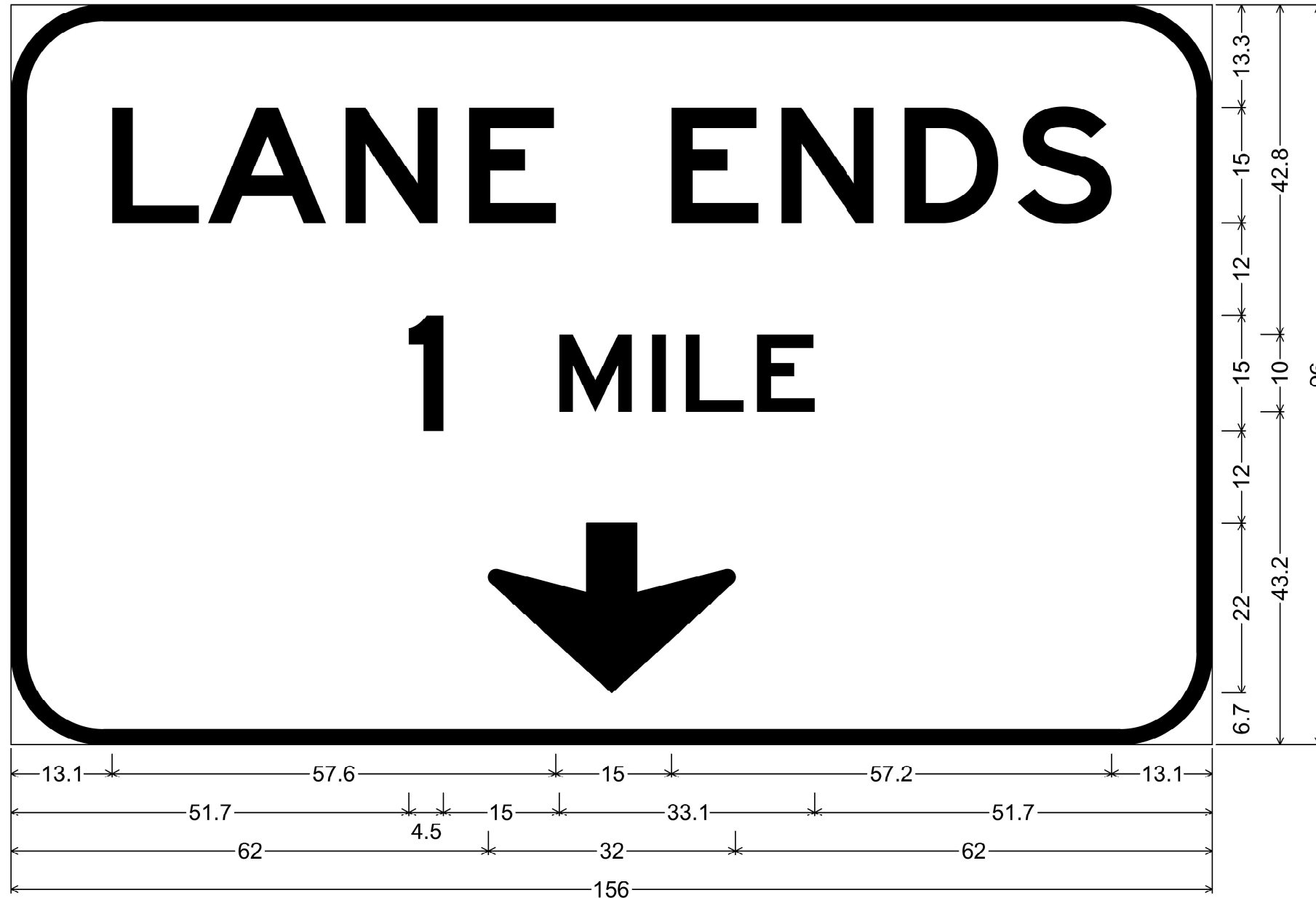
USER NAME = anna.devine	DESIGNED -	REVISED -
	DRAWN -	REVISED -
	CHECKED -	REVISED -
PLOT DATE = 10/10/2025	DATE -	REVISED -

STATE OF ILLINOIS
 DEPARTMENT OF TRANSPORTATION

OVERHEAD SIGN PANEL DETAILS

SCALE: SHEET 1 OF 3 SHEETS STA. TO STA.

F.A.I. RTE.	SECTION	COUNTY	TOTAL SHEETS	SHEET NO.
474	90(6,7)RS-2	TAZEWELL	20	14
CONTRACT NO. 68K12				
ILLINOIS FED. AID PROJECT				



12.0" Radius, 2.0" Border, Black on White;
 "LANE ENDS", E 2K; "1 MILE", E 2K; Down Arrow 22.0" 270°;
 Table of distances between letter and object lefts

	L	A	N	E	E	N	D	S	
13.1	12.5	17.8	16.1	26.2	14.3	16.0	14.7	12.2	13.1
51.7	1	M	I	L	E				
	19.5	12.0	4.4	9.2	7.5	51.7			
62.0	↓								
	32.0	62.0							

MODEL: Detail (Sheet) - 2
 FILE NAME: c:\pw\work\107936\0468K12-sh-SignDetails.dgn

USER NAME = anna.devine	DESIGNED -	REVISED -
	DRAWN -	REVISED -
	CHECKED -	REVISED -
PLOT DATE = 10/10/2025	DATE -	REVISED -

STATE OF ILLINOIS
 DEPARTMENT OF TRANSPORTATION

OVERHEAD SIGN PANEL DETAILS

SCALE: SHEET 2 OF 3 SHEETS STA. TO STA.

F.A.I. RTE.	SECTION	COUNTY	TOTAL SHEETS	SHEET NO.
474	90(6,7)RS-2	TAZEWELL	20	15
CONTRACT NO. 68K12				
ILLINOIS FED. AID PROJECT				



E1-5P(1)_114x54;
 12.0" Radius, 2.0" Border, White on Green;
 Rounded Rectangle 1.9" Radius Yellow;
 "EXIT", E 2K 120% spacing; "15", E 2K;
 3.0" Radius, 2.0" Border, White on Green;
 "WEST", E Mod 2K; "Peoria", E Mod 2K;
 12.0" Radius, 2.0" Border, Black on Yellow;
 "EXIT", E 2K; Down Arrow 22.0" 270°; "ONLY", E 2K;
 Table of distances between letter and object lefts

15.0	60.0	99.0											
29.9	E	X	I	T	1	5	77.9						
36.6	74	W	E	S	T	36.6							
49.1	P	e	o	r	i	a	49.1						
16.7	E	X	I	T	↓	O	N	L	Y	16.7			

MODEL: Detail (Sheet) - 3
 FILE NAME: c:\p\work\kowitz\brbrian.bouris@illinois.gov\107936\0468K12-sh-SignDetails.dgn

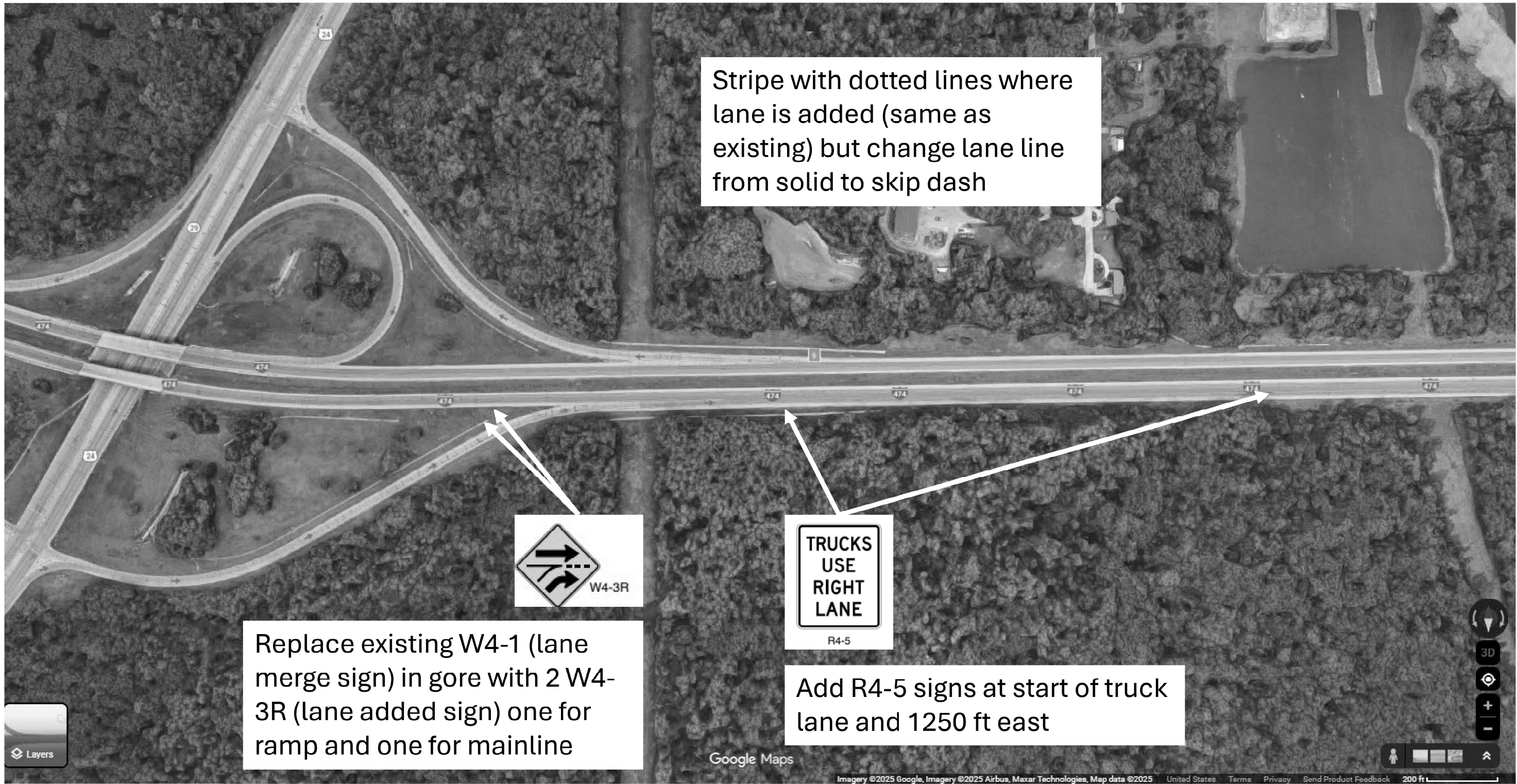
USER NAME = anna.devine	DESIGNED -	REVISED -
	DRAWN -	REVISED -
	CHECKED -	REVISED -
PLOT DATE = 10/10/2025	DATE -	REVISED -

STATE OF ILLINOIS
 DEPARTMENT OF TRANSPORTATION

OVERHEAD SIGN PANEL DETAILS

SCALE: SHEET 3 OF 3 SHEETS STA. TO STA.

F.A.I RTE.	SECTION	COUNTY	TOTAL SHEETS	SHEET NO.
474	90(6,7)RS-2	TAZEWELL	20	16
CONTRACT NO. 68K12				
ILLINOIS FED. AID PROJECT				



MODEL: Schedule (Sheet) - 1
FILE NAME: c:\pw\work\kewitobrian.bouris@illinois.gov\107936\0468K12-sh1-1-TruckLane.dgn

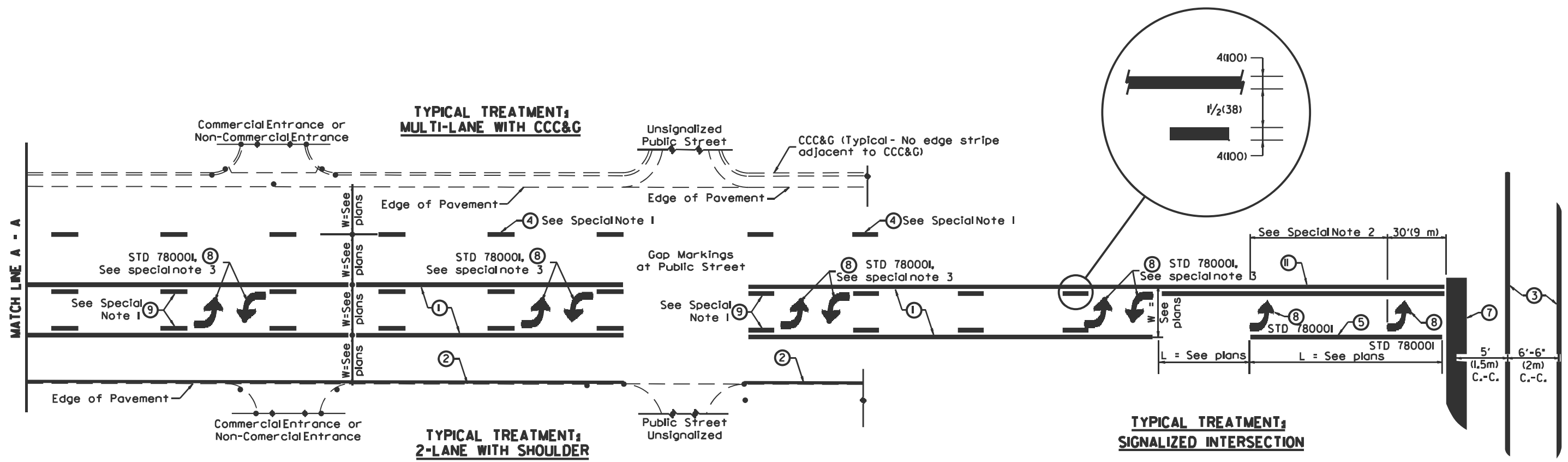
USER NAME = thomas.cox	DESIGNED -	REVISED -
	DRAWN -	REVISED -
	CHECKED -	REVISED -
PLOT DATE = 11/24/2025	DATE -	REVISED -

**STATE OF ILLINOIS
DEPARTMENT OF TRANSPORTATION**

TRUCK LANE DETAIL

SCALE: SHEET 1 OF SHEETS STA. TO STA.

F.A.I. RTE.	SECTION	COUNTY	TOTAL SHEETS	SHEET NO.
474	90(6,7)RS-2	TAZEWELL	20	17
CONTRACT NO. 68K12				
ILLINOIS FED. AID PROJECT				



FLUSH PAVED MEDIAN; TWO-WAY LEFT TURN LANE WITH ONE-WAY LEFT TURN LANE AT SIGNALIZED INTERSECTION

TYPICAL PAVEMENT MARKING LEGEND

(Note: This is a District Standard Legend. Some elements may not apply to specific project.)

- ① 4(100) Solid (Yellow)
- ② 4(100) Solid (White)
- ③ 2-6(150) Crosswalk @ 6'-6" (2m) min C.-C. (White)
2-8(200) Crosswalk @ 6'-6" (2m) min C.-C. (White) (When traffic signals are present.)
- ④ 6(150) Skip-Dash (White) (See Special Note 1)
- ⑤ 8(200) Solid (White)
- ⑥ 12(300) Diagonal (White) (Item 6 (3) shown on Std. 78000I)
- ⑦ 24(600) Stop Bar (White)
- ⑧ Letters & Arrows (See Std. 78000I and Special Notes 2 & 3)
- ⑨ 4(100) Skip-Dash (Yellow) (See Special Note 1)
- ⑩ 12(300) Diagonal (Yellow) (See Table A)
- ⑪ 4(100) Double Solid (Yellow) 11(280) C.-C. See Table A

SPECIAL NOTES

1. Skip-Dash markings will be centered between both ends of city blocks and shall be placed in alignment transversely across the pavement.
2. The following shall apply to arrows located in one-way left turn lanes:
 - A. A minimum of two (2) arrows is required.
 - B. The maximum spacing between arrows is 80' (24 m).
 - C. Arrows shall be evenly spaced if three (3) or more are required.
3. The following shall apply to arrow pairs located in two-way left turn lanes:
 - A. A minimum of two (2) arrow pairs is required.
 - B. The maximum spacing between arrow pairs is 200' (61 m).
 - C. Arrow pairs shall be evenly spaced if three (3) or more are required.
 - D. The spacing between Bi Directional Left Turn Arrows is 33' (10 m).

GENERAL NOTES

1. Refer to State Standard 78000I for additional Pavement Markings including letters & arrows.
2. See Plans for Pavement Markings adjacent to curbed islands and medians, and through lane reductions.
3. Refer to Article 780.13 for letter, number and symbol areas (sq. ft.)
4. Areas are grooved 1" beyond each edge for the following symbols:
 - Through Arrow= 14.8 sq. ft.
 - Large Left or Right Arrow= 21.9 sq. ft.
 - 2 Arrow Combination Left (or Right) and Through= 34.9 sq. ft.
 - Wrong Way Arrow= 29.5 sq. ft.
 - Railroad Crossing Symbol= 69.8 sq. ft.
 (For further information, refer to BDE Special Provision: Grooving for Recessed Pavement Markings)

MODEL - General Notes (Sheet) FILE NAME: c:\p\work\68k12\sh-cadd\std.dgn

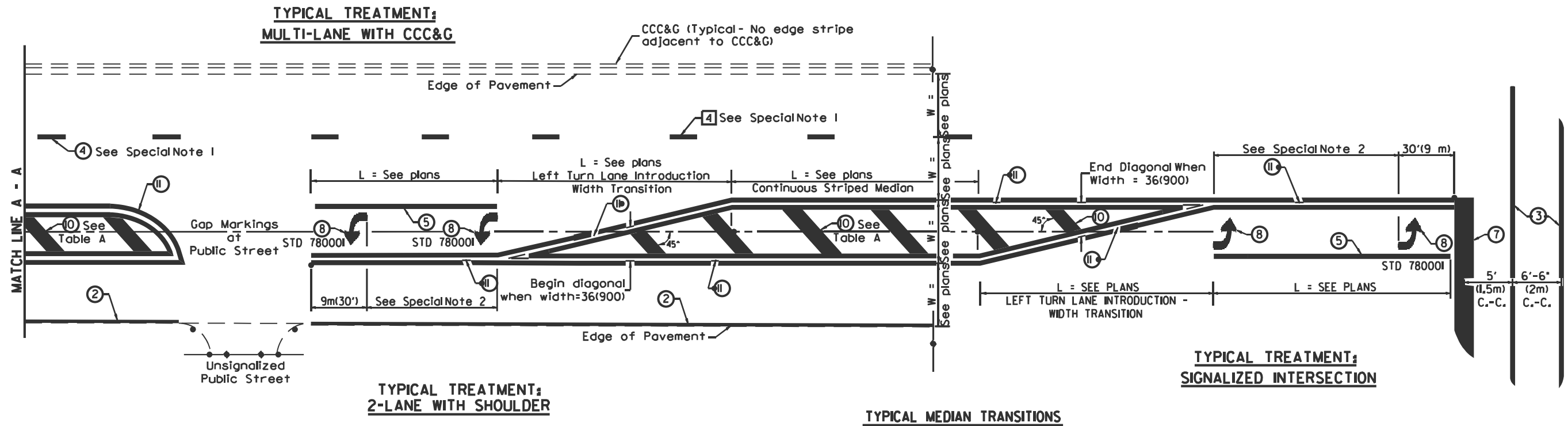
USER NAME = Brian.Bouris	DESIGNED -	REVISED -
	DRAWN -	REVISED -
	CHECKED -	REVISED -
PLOT DATE = 11/24/2025	DATE -	REVISED -

**STATE OF ILLINOIS
DEPARTMENT OF TRANSPORTATION**

**TYPICAL PAVEMENT MARKINGS
CADD STD. 780001-D4**

SCALE: SHEET 1 OF 2 SHEETS STA. TO STA.

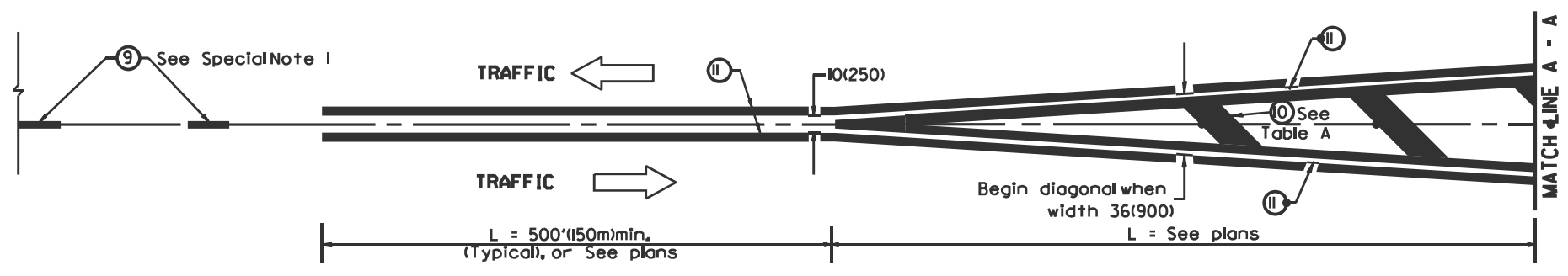
F.A.I. RTE.	SECTION	COUNTY	TOTAL SHEETS	SHEET NO.
474	90(6.7)RS-2	TAZEWELL	20	19
CONTRACT NO. 68K12				
ILLINOIS FED. AID PROJECT				



FLUSH PAVED MEDIAN: RESTRICTED LEFT TURN LANE

TABLE A
RECOMMENDED SPACING BETWEEN DIAGONAL LINES

SPEED LIMIT RANGE	INTERSECTION CHANNELIZATION (Includes Width Transitions for Median and Left Turn Lane Introductions)	
	CONTINUOUS	
Less Than 30 mph (50 km/h)	50' (15m)	15' (5m)
30 - 45 mph (50 - 70 km/h)	75' (23m)	20' (6m)
Over 45 mph (70 km/h)	150' (46m)	30' (9m)



All dimensions are in inches (millimeters) unless otherwise noted.

MODEL: CADD STD-1 (Sheet)
FILE NAME: c:\pw\work\68k12\sh-cadd_std.dgn

USER NAME = Brian.Bouris	DESIGNED -	REVISED -
	DRAWN -	REVISED -
	CHECKED -	REVISED -
PLOT DATE = 11/24/2025	DATE -	REVISED -

STATE OF ILLINOIS
DEPARTMENT OF TRANSPORTATION

TYPICAL PAVEMENT MARKINGS
CADD STD. 780001-D4

SCALE: SHEET 2 OF 2 SHEETS STA. TO STA.

F.A.I. RTE.	SECTION	COUNTY	TOTAL SHEETS	SHEET NO.
474	90(6.7)RS-2	TAZEWELL	20	20
CONTRACT NO. 68K12				
ILLINOIS FED. AID PROJECT				