

STATE OF ILLINOIS
DEPARTMENT OF TRANSPORTATION

| RTE. | SECTION | COUNTY | TOTAL SHEETS | SHEET NO. |
|------|---------------------------|----------|--------------------|-----------|
| VAR. | D4 PAVEMENT MARKINGS 2026 | VARIOUS | 5 | 1 |
| | | ILLINOIS | CONTRACT NO. 68K54 | |

INDEX OF SHEETS:

- 1 COVER SHEET
- 2 SUMMARY OF QUANTITIES
- 3 SCHEDULE OF QUANTITIES
- 4-5 TYPICAL PAVEMENT MARKINGS

HIGHWAY STANDARDS:

- 701311-03
- 701426-09
- 701427-05
- 701901-11
- 780001-05

DISTRICT STANDARDS:

780001-D4

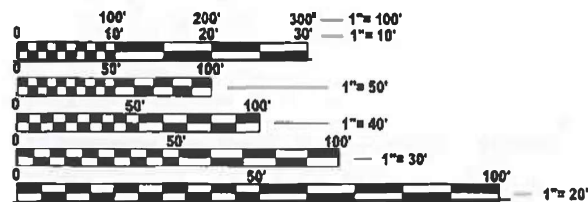
PROJECT DESCRIPTION:

DISTRICTWIDE PAVEMENT MARKINGS

PROPOSED
HIGHWAY PLANS

VARIOUS ROUTES
D4 PAVEMENT MARKINGS 2026
CONTRACT MAINTENANCE
VARIOUS COUNTIES

C-94-102-25

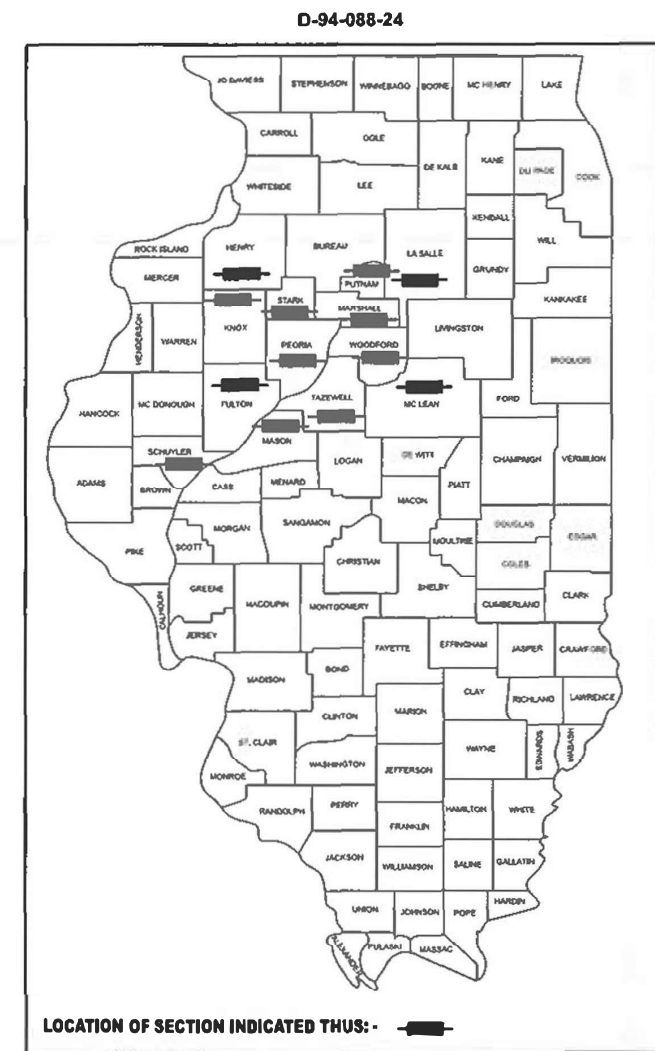
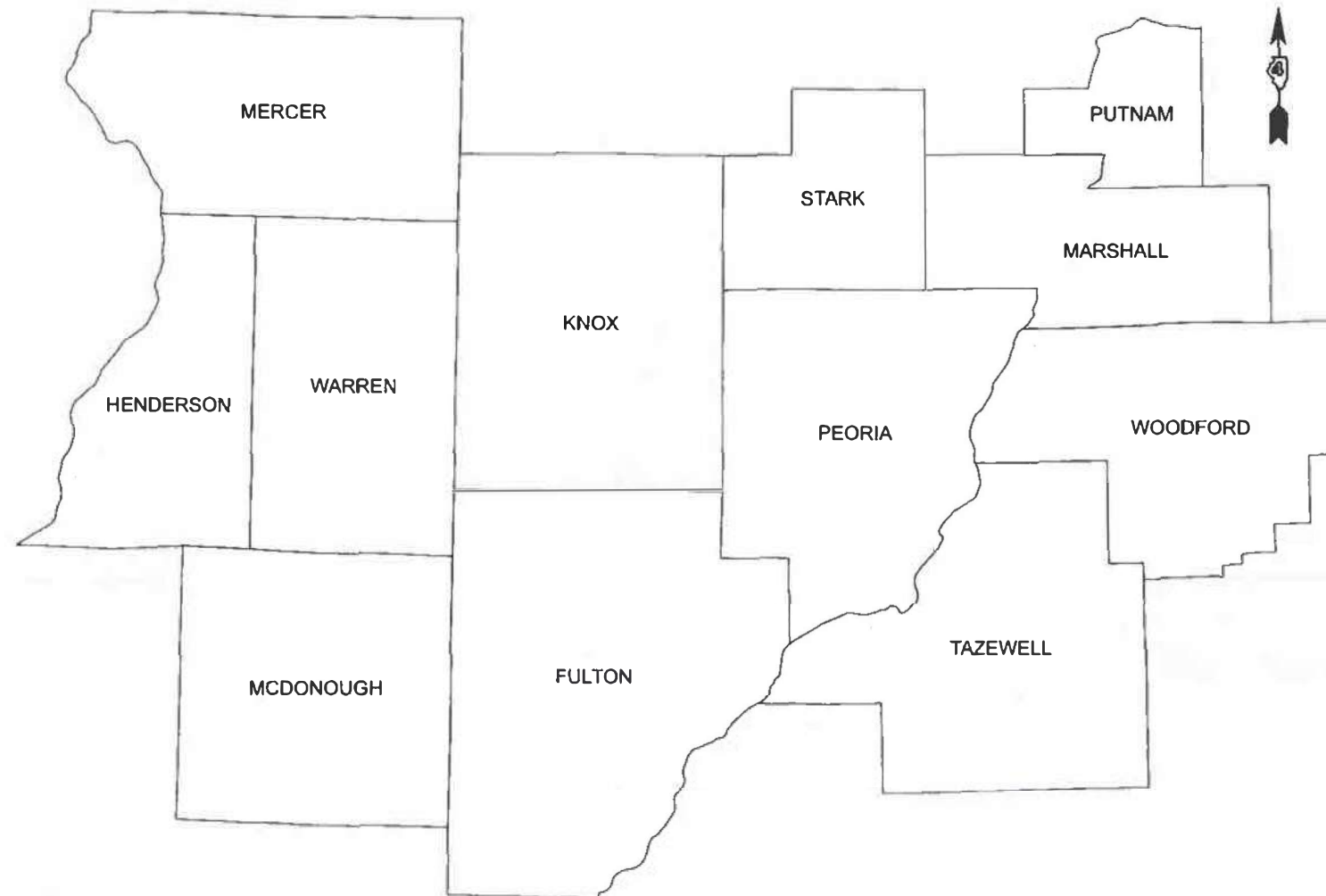


FULL SIZE PLANS HAVE BEEN PREPARED USING STANDARD ENGINEERING SCALES. REDUCED SIZED PLANS WILL NOT CONFORM TO STANDARD SCALES. IN MAKING MEASUREMENTS ON REDUCED PLANS, THE ABOVE SCALES MAY BE USED.

J.U.L.I.E.
JOINT UTILITY LOCATION INFORMATION FOR EXCAVATION
1-800-892-0123
OR 811

PROJECT ENGINEER TREVOR HANSON 309-671-4466

CATALOG NO. 036691-00D
CONTRACT NO. 68K54



LOCATION OF SECTION INDICATED THUS: - [black rectangle] -

STATE OF ILLINOIS
DEPARTMENT OF TRANSPORTATION

SUBMITTED January 26 20 26
Trevor L. Hanson REG. ENGINEER

March 20 20 26
[Signature]
ENGINEER OF DESIGN AND ENVIRONMENT

March 20 20 26
[Signature] 5
DIRECTOR OF HIGHWAYS PROJECT IMPLEMENTATION

PRINTED BY THE AUTHORITY
OF THE STATE OF ILLINOIS

| PAINT PAVEMENT MARKING SCHEDULE | | | | |
|---------------------------------|-------------|------------------|------------------|----------------|
| COUNTY | 78001110 | | 78001130 | 78001140 |
| | LINE 4" | | LINE 6" | LINE 8" |
| | WHITE | YELLOW | WHITE | WHITE |
| | QTY. (FOOT) | QTY. (FOOT) | QTY. (FOOT) | QTY. (FOOT) |
| FULTON | 232,693 | 348,531 | 488,732 | 2,565 |
| HENRY | 38,939 | 15,137 | 13,329 | |
| KNOX | 1,186,635 | 626,326 | 17,394 | 23,843 |
| LASALLE | | 1,900 | 8,516 | |
| MARSHALL | | 119,732 | 342,061 | 2,247 |
| MASON | | 2,809 | 10,040 | |
| MCLEAN | | 6,395 | 11,631 | |
| PEORIA | 41,891 | 515,337 | 616,013 | 69,428 |
| PUTNAM | | 70,726 | 157,725 | 502 |
| SCHUYLER | 14,996 | 4,370 | | |
| STARK | 32,006 | 157,847 | 277,350 | 1,456 |
| TAZEWELL | | 216,652 | 357,382 | 20,224 |
| WOODFORD | | 115,010 | 233,467 | 1,272 |
| SUBTOTAL | 1,547,160 | 2,200,772 | 2,533,640 | 121,537 |
| TOTAL | | 3,747,932 | 2,533,640 | 121,537 |

FOR SPECIFIC PAVEMENT MARKING LOCATIONS, CONTACT BILL HARRMANN AT (309) 396-5716 OR DARRYL HOLMES AT (309) 734-3721.

| MOBILIZATION SCHEDULE | |
|-----------------------|------------|
| COUNTY | L SUM |
| VARIOUS | 1.0 |
| TOTAL | 1.0 |

MODEL: Default
FILE NAME: c:\pwwork\pwwork\hanson\11946001D468K54.dgn

| | | |
|---------------------------|------------|-----------|
| USER NAME = trevor.hanson | DESIGNED - | REVISED - |
| | DRAWN - | REVISED - |
| | CHECKED - | REVISED - |
| PLOT DATE = 1/14/2026 | DATE - | REVISED - |

STATE OF ILLINOIS
DEPARTMENT OF TRANSPORTATION

SCHEDULE OF QUANTITIES

SCALE: SHEET OF SHEETS STA. TO STA.

| RTE. | SECTION | COUNTY | TOTAL SHEETS | SHEET NO. |
|---------------------------|---------------------------|---------|--------------|-----------|
| VAR. | D4 PAVEMENT MARKINGS 2026 | VARIOUS | 5 | 3 |
| CONTRACT NO. 68K54 | | | | |
| ILLINOIS FED. AID PROJECT | | | | |



FLUSH PAVED MEDIAN: TWO-WAY LEFT TURN LANE WITH ONE-WAY LEFT TURN LANE AT SIGNALIZED INTERSECTION

TYPICAL PAVEMENT MARKING LEGEND

(Note: This is a District Standard Legend. Some elements may not apply to specific project.)

- ① 4 Solid (Yellow)
- ② Urban 4 Solid (White)
Rural 6 Solid (White)
- ③ 2-6 Crosswalk @ 6'-6" min C.-C. + 24" Bars with 24" Gap (White)
2-8 Crosswalk @ 6'-6" min C.-C. (White) (When traffic signals are present.)
- ④ 6 Skip-Dash (White) (See Special Note 1)
- ⑤ 6 Solid (White)
- ⑥ 12 Diagonal (White) (Item ⑥ is shown on Std. 780001)
- ⑦ 24 Stop Bar (White)
- ⑧ Letters & Arrows (See Std. 780001 and Special Notes 2, 3 & 5)
- ⑨ 4 Skip-Dash (Yellow) (See Special Note 1)
- ⑩ 12 Diagonal (Yellow) (See Table A) (See Table A)
- ⑪ 4 Double Solid (Yellow) (See Table A)

SPECIAL NOTES

1. Skip-Dash markings will be centered between both ends of city blocks and shall be placed in alignment transversely across the pavement.
2. The following shall apply to arrows located in one-way left turn lanes:
 - A. A minimum of two (2) arrows is required.
 - B. The maximum spacing between arrows is 80'.
 - C. Arrows shall be evenly spaced if three (3) or more are required.
3. The following shall apply to arrow pairs located in two-way left turn lanes:
 - A. A minimum of two (2) arrow pairs is required.
 - B. The maximum spacing between arrow pairs is 200'.
 - C. Arrow pairs shall be evenly spaced if three (3) or more are required.
 - D. The spacing between Bi Directional Left Turn Arrows is 16'.

GENERAL NOTES

1. Refer to State Standard 780001 for additional Pavement Markings including letters & arrows.
2. See Plans for Pavement Markings adjacent to curbed islands and medians, and through lane reductions.
3. Refer to Article 780.13 for letter, number and symbol areas (sq. ft.)
4. Areas are grooved 1" beyond each edge for the following symbols:
 - Through Arrow= 14.8 sq. ft.
 - Large Left or Right Arrow= 21.9 sq. ft.
 - 2 Arrow Combination Left (or Right) and Through= 34.9 sq. ft.
 - Wrong Way Arrow= 29.5 sq. ft.
 - Railroad Crossing Symbol= 69.8 sq. ft.
 - (For further information, refer to BDE Special Provision: Grooving for Recessed Pavement Markings)
5. Use Large size arrows for Urban and Rural applications.
6. Pavement markings should be grooved in except on bridge decks.

DESIGNER NOTES:
 MODEL: DA-780001-01 1. Include State Standard 780001 (Typical Pavement Markings)
 FILE NAME: c:\pw_work\pavement\markings\055944\DA-780001.dgn

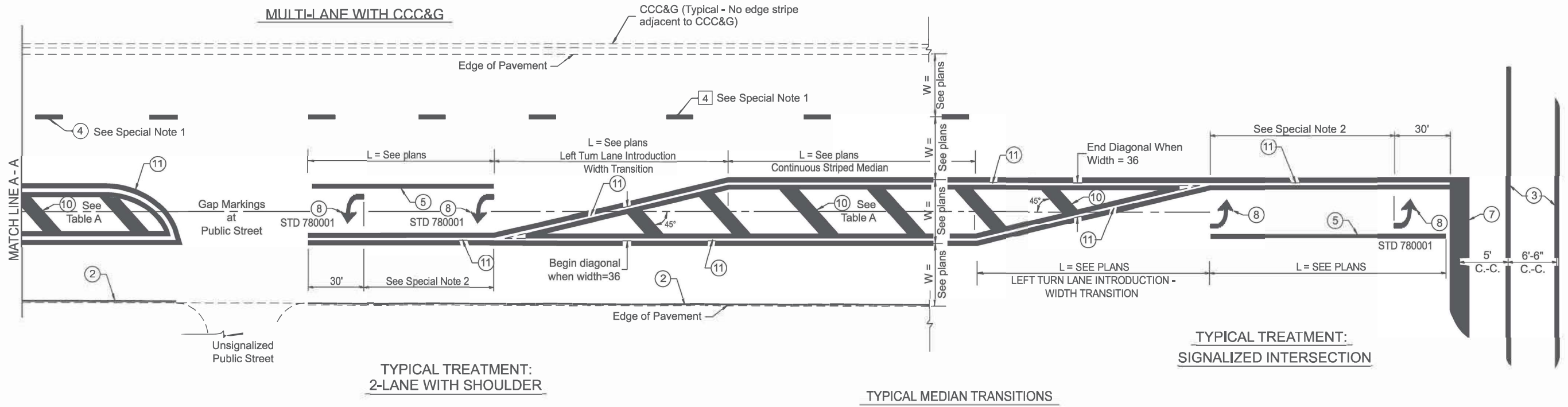
| | | |
|------------------------|------------|-----------|
| USER NAME = thomas.cox | DESIGNED - | REVISED - |
| | DRAWN - | REVISED - |
| | CHECKED - | REVISED - |
| PLOT DATE = 1/13/2026 | DATE - | REVISED - |

**STATE OF ILLINOIS
DEPARTMENT OF TRANSPORTATION**

TYPICAL PAVEMENT MARKINGS

SCALE: NOT TO SCALE SHEET 000 OF 2 SHEETS STA. TO STA.

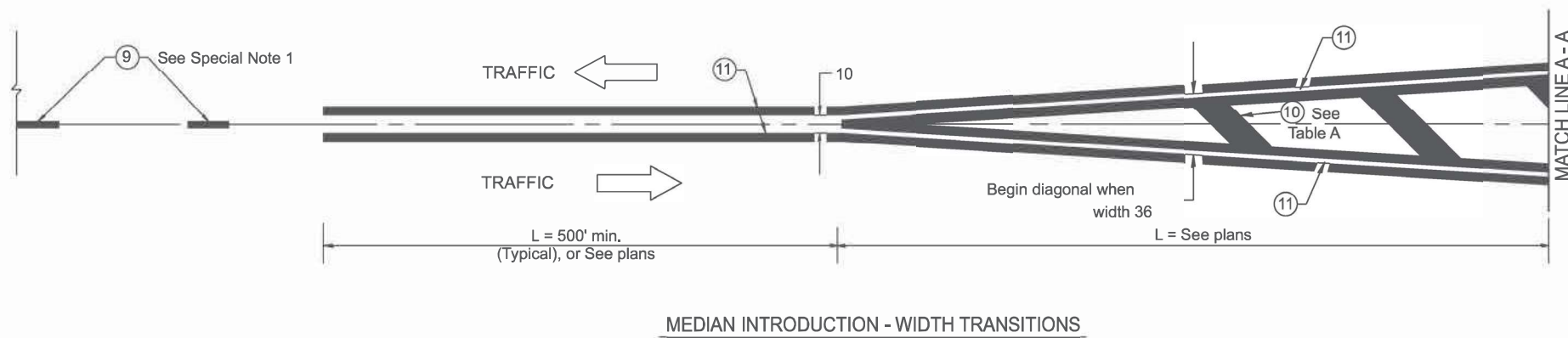
| | | | | |
|-----------|------------------------------|------------------|--------------|-----------|
| F.A. RTE. | SECTION | COUNTY | TOTAL SHEETS | SHEET NO. |
| VAR. | DISTRICT 4 DETAIL NO. 780001 | VARIOUS | 5 | 4 |
| ILLINOIS | | FED. AID PROJECT | | |



FLUSH PAVED MEDIAN: RESTRICTED LEFT TURN LANE

TABLE A
RECOMMENDED SPACING BETWEEN DIAGONAL LINES

| SPEED LIMIT RANGE | CONTINUOUS | INTERSECTION CHANNELIZATION (Includes Width Transitions for Median and Left Turn Lane Introductions) | |
|-------------------|------------|---|-------|
| | | 5' | 6'-6" |
| Less Than 30 mph | 50' | 5' | 15' |
| 30 - 45 mph | 75' | 5' | 20' |
| Over 45 mph | 150' | 5' | 30' |



MODEL: SHT_PLAN
FILE NAME: C:\Bentley\CONNECT\1011\Organizer-Civil\DOT_Standards\Civil\DOT_Sheets.dwg

All dimensions are in inches unless otherwise noted.

| | | |
|-------------------------|------------|-----------|
| USER NAME = Eric.Thomas | DESIGNED = | REVISED = |
| | DRAWN = | REVISED = |
| | CHECKED = | REVISED = |
| PLOT DATE = 12/7/2022 | DATE = | REVISED = |

**STATE OF ILLINOIS
DEPARTMENT OF TRANSPORTATION**

TYPICAL PAVEMENT MARKINGS

SCALE: NOT TO SCALE SHEET 2 OF 2 SHEETS STA. TO STA.

| | | | | |
|------------------------------|---------------------------|--------------------|--------------|-----------|
| F.A. RTE. | SECTION | COUNTY | TOTAL SHEETS | SHEET NO. |
| VAR. | D4 PAVEMENT MARKINGS 2026 | VARIOUS | 5 | 5 |
| DISTRICT 4 DETAIL NO. 780001 | | CONTRACT NO. 68K54 | | |
| ILLINOIS FED. AID PROJECT | | | | |