

04-24-2026 LETTING ITEM 110

INDEX OF SHEETS

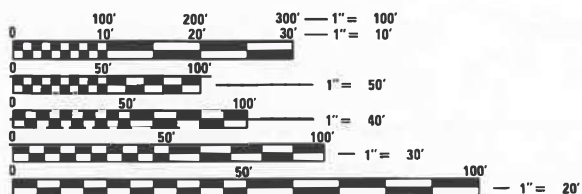
- 1 COVER SHEET
- 2 GENERAL NOTES AND COMMITMENTS
- 3 SUMMARY OF QUANTITIES
- 4 TYPICAL SECTIONS
- 5-7 SCHEDULE OF QUANTITIES
- 8 LOCATION MAP

HIGHWAY STANDARDS

- 000001-09 STANDARD SYMBOLS, ABBREVIATIONS AND PATTERNS
- 001001-02 AREAS OF REINFORCEMENT BARS
- 001006 DECIMAL OF AN INCH AND OF A FOOT
- 442201-04 CLASS C AND D PATCHES
- 701001-02 OFF-RD OPERATIONS, 2L 2W, MORE THAN 15FT
- 701006-05 OFF-RD OPERATIONS, 2L 2W, 15' TO 24' FROM PAVEMENT EDGE
- 701011-04 OFF-RD MOVING OPERATIONS, 2L 2W, DAY ONLY
- 701336-07 LANE CLOSURE, 2L 2W, WORK AREAS IN SERIES, 45 MPH OR MORE
- 701501-06 URBAN LANE CLOSURE, 2L 2W, UNDIVIDED
- 701901-11 TRAFFIC CONTROL DEVICES

TRAFFIC DATA

IL 29: OTHER PRINCIPAL ARTERIAL
 ADT: 3200 (2023)
 SU: 150
 MU: 325



FULL SIZE PLANS HAVE BEEN PREPARED USING STANDARD ENGINEERING SCALES. REDUCED SIZED PLANS WILL NOT CONFORM TO STANDARD SCALES. IN MAKING MEASUREMENTS ON REDUCED PLANS, THE ABOVE SCALES MAY BE USED.

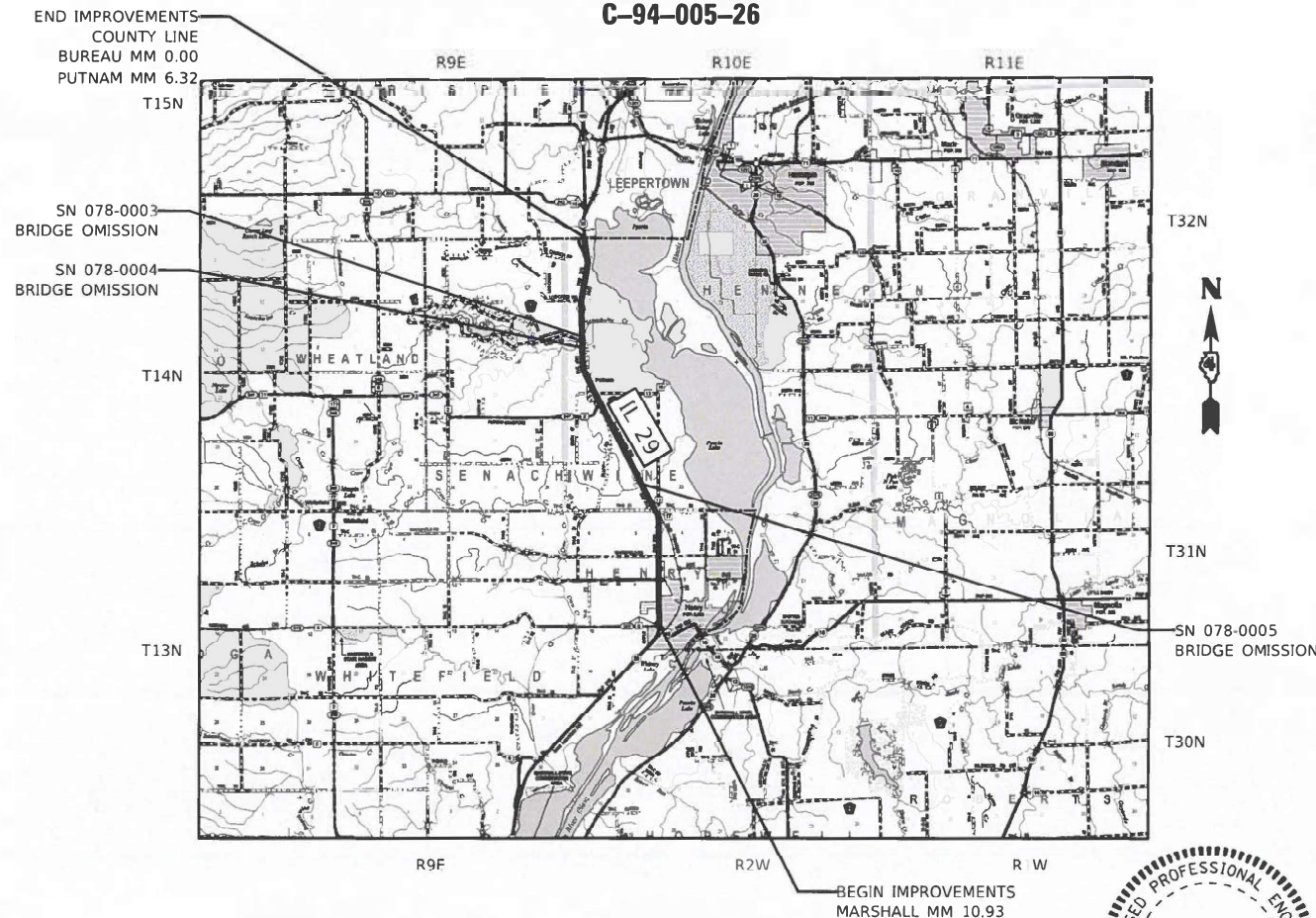
J.U.L.I.E.
 JOINT UTILITY LOCATION INFORMATION FOR EXCAVATORS
 1-800-892-0123
 OR 811

PROJECT ENGINEER: BEN TELLEFSON
PROJECT MANAGER: WILL MOSER
CONTRACT NO. 68K89
CATALOG NO. 036730-00D

STATE OF ILLINOIS
 DEPARTMENT OF TRANSPORTATION
 DIVISION OF HIGHWAYS

**PROPOSED
 HIGHWAY PLANS**

FAP 318 (IL 29)
 SECTION (21,20)PP
 PARTIAL AND FULL DEPTH PATCHING
 IL 18 IN MARSHALL COUNTY TO PUTNAM/BUREAU COUNTY LINE
 PUTNAM & MASHALL COUNTIES
 C-94-005-26



LOCATION MAP
 1" = 4.0 MILES

GROSS LENGTH = 46,780.8 FT. = 8.86 MILE
 NET LENGTH = 46,542.8 FT. = 8.81 MILE

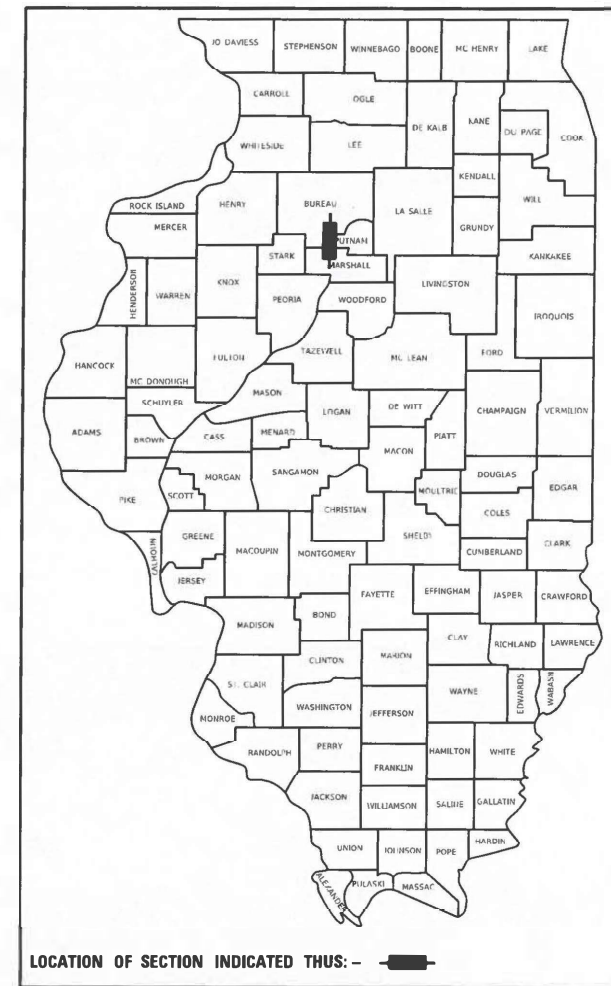


Jing Cherng Lee
JING CHERNG LEE, P.E.
 LICENSE NO. 062-076910
 EXPIRATION DATE 11-30-2027
 DATE SIGNED 01-09-2026

F.A.P. RTE.	SECTION	COUNTY	TOTAL SHEETS	SHEET NO.
318	(21,20)PP	ILLINOIS	8	1

CONTRACT NO. 68K89
 PUTNAM & MARSHALL

D-94-004-26



PLANS PREPARED BY:



4940 Old Collinsville Road
 Swansea, Illinois 62226
 Tel: 618.624.4488
 www.twm-inc.com
 Illinois Professional Design Firm
 No. 184-001220
 License Expires: 4/30/2027
 ILLINOIS - MISSOURI - TENNESSEE

STATE OF ILLINOIS
 DEPARTMENT OF TRANSPORTATION

SUBMITTED January 15 20 26
Kensil A. Barnhart
 REGIONAL ENGINEER

March 20 20 26
See E. A. Etkin
 ENGINEER OF DESIGN AND ENVIRONMENT

March 20 20 26
W. Moser
 DIRECTOR OF HIGHWAYS PROJECT IMPLEMENTATION

**PRINTED BY THE AUTHORITY
 OF THE STATE OF ILLINOIS**

COMMITMENTS

COMMITMENTS ARE NOT TO BE ALTERED WITHOUT THE WRITTEN APPROVAL OF ALL PARTIES TO WHICH THE COMMITMENT WAS MADE.

NO COMMITMENTS HAVE BEEN MADE ON THIS PROJECT.

ENVIRONMENTAL REVIEWS

PRIOR TO THE USE OF ANY PROPOSED BORROW AREAS, USE AREAS (TEMPORARY ACCESS ROADS, DETOURS, RUN-AROUNDS, ETC.) AND/OR WASTE AREAS, THE CONTRACTOR SHALL FILE THE REQUIRED ENVIRONMENTAL RESOURCE REQUEST SURVEYS ACCORDING TO SECTION 107.22 OF THE STANDARD SPECIFICATIONS. THESE SURVEYS ARE REQUIRED IN ORDER FOR THE DEPARTMENT TO CONDUCT CULTURAL AND BIOLOGICAL RESOURCE SURVEYS FOR THE PROPOSED SITE.

THE REQUIRED ENVIRONMENTAL RESOURCE DOCUMENTATION SHALL INCLUDE THE FOLLOWING:

- BDE FORM 2289 (BORROW SITE REVIEW)
- BDE FORM 2290 (WASTE/USE AREA REVIEW)
- A LOCATION MAP SHOWING THE SIZE LIMITS AND LOCATION OF THE USE AREA
- COLOR PHOTOGRAPHS DEPICTING THE USE AREA
- BORROW AREA ENTRY AGREEMENT FORM - D4 PI0101

PRIOR TO ANY WASTE MATERIALS BEING REMOVED FROM THE CONSTRUCTION SITE THE REQUIRED ENVIRONMENTAL RESOURCE SURVEYS SHALL BE OBTAINED AND FILED BY THE CONTRACTOR. EXCESS WASTE PRODUCTS REMOVED FROM THE CONSTRUCTION SITE SHALL BE DISPOSED OF AS REQUIRED IN SECTION 202.03 OF THE STANDARD SPECIFICATIONS.

ANY PROTRUDING METAL BARS SHALL BE REMOVED PRIOR TO THE DISPOSAL OF BROKEN CONCRETE AT APPROVED DISPOSAL SITES.

PLEASE NOTE THAT A MINIMUM OF FOUR WEEKS SHALL BE ALLOWED FOR THE DISTRICT TO OBTAIN THE REQUIRED WASTE SITE ENVIRONMENTAL CLEARANCES AND SIX WEEKS FOR THE REQUIRED BORROW SITE ENVIRONMENTAL CLEARANCES.

PROJECT SPECIFIC NOTES

NO OVERNIGHT CLOSURES WILL BE ALLOWED.

NO WORK ON BRIDGES OR FULL DEPTH PATCHES ON APPROACH SLABS.

TRAFFIC CONTROL

FLAGGERS AND APPLICABLE TRAFFIC CONTROL SIGNS SHALL BE FURNISHED AT ALL SIDE ROADS WITHIN THE LIMITS OF THE PATCHING OPERATION WHEN REQUIRED ACCORDING TO THE HIGHWAY STANDARDS.

HOT-MIX ASPHALT MIXTURE REQUIREMENTS

THE FOLLOWING MIXTURE REQUIREMENTS ARE APPLICABLE FOR THIS PROJECT:

LOCATION(S)	MAINLINE	MAINLINE	MAINLINE
MIXTURE USE(S):	CLASS D PATCH (POLY SURFACE 2")	CLASS D PATCH (LOWER LIFTS)	PARTIAL DEPTH PATCH (POLY SURFACE 2.25")
PG:	SBS 76-28	PG 64-22	SBS 76-28
DESIGN AIR VOIDS:	4% N=70	4% N=70	4% N=70
MIXTURE COMPOSITION:	IL 9.5	IL 19.0	IL 9.5
FRICITION AGGREGATE:	MIX "C"	N/A	MIX "C"
MIXTURE WEIGHT:	112.0 LB/SY/IN	112.0 LB/SY/IN	112.0 LB/SY/IN
QUALITY MANAGEMENT PROGRAM:	QC/QA	QC/QA	QC/QA
SUBLOT SIZE:	N/A	N/A	N/A
MATERIAL TRANSFER DEVICE:	NO	NO	NO

NOTES:

1. INDIVIDUAL LIFT THICKNESS OF EACH MIX TYPE WILL BE NO LESS THAN THREE (3) TIMES NORMAL MAXIMUM AGGREGATE SIZE AND NO MORE THAN FIVE (5) TIMES NOMINAL AGGREGATE MAXIMUM SIZE, UNLESS OTHERWISE APPROVED BY THE ENGINEER.
2. FOR DESIGN PURPOSES, MIXTURE WEIGHT FOR ALL MIXES IS DETERMINED TO BE 112.0 LB./SQ. YARD/IN., UNLESS OTHERWISE NOTED.
3. SUBLOT SIZES FOR PFP AND QCP MIXES WILL BE 1,000 TONS, UNLESS OTHERWISE AGREED TO BY THE ENGINEERING AND THE PAVING CONTRACTOR.

STATE OF ILLINOIS
DEPARTMENT OF TRANSPORTATION

GENERAL NOTES & COMMITMENTS

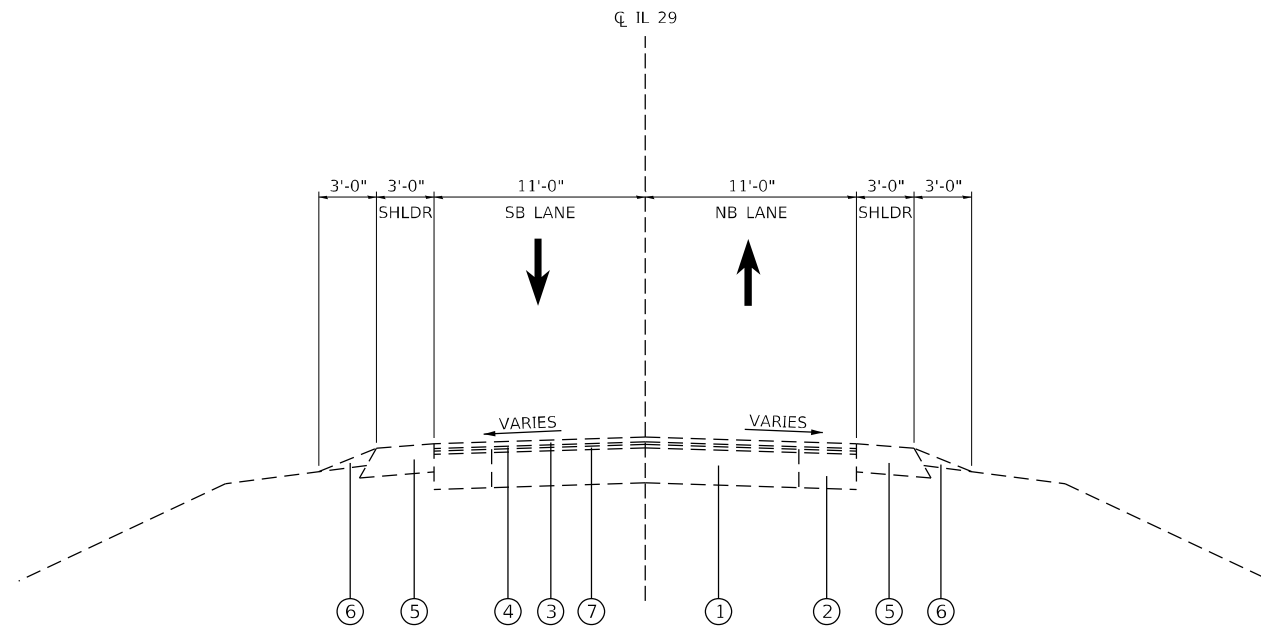
SCALE: N/A SHEET 1 OF 1 SHEETS STA. TO STA.

F.A.P. RTE.	SECTION	COUNTY	TOTAL SHEETS	SHEET NO.
318	(0602;21,20)PP	*	8	2
*PUTNAM & MARSHALL			CONTRACT NO. 68K89	
ILLINOIS			FED. AID PROJECT	

USER NAME = dllee	DESIGNED - JCL	REVISED -
	DRAWN - BCS	REVISED -
PLOT SCALE = 10,0000 * / in.	CHECKED - TBP	REVISED -
PLOT DATE = 1/7/2026	DATE - JAN 2026	REVISED -

LEGEND

- ① EX. PCC PAVEMENT
- ② EX. PCC BASE COURSE WIDENING
- ③ EX. HMA SURFACE COURSE, 1 1/2"
- ④ EX. HMA BINDER COURSE, 3/4"
- ⑤ EX. HMA SHOULDERS, 8 3/4"
- ⑥ EX. AGGREGATE SHOULDERS
- ⑦ EX. HMA RESURFACING
- ⑧ EX. HMA RESURFACED PAVEMENT
- ⑨ EX. HMA SHOULDERS
- ⑩ EX. CONCRETE CURB AND GUTTER



IL 29 EXISTING TYPICAL SECTION
IL 18 TO PUTNAM / BUREAU COUNTY LINE

MODEL: D:\p1\11
 FILE NAME: P:\2023\2098A\ZM - IL 29 Patching\4_CADD - DIV\4.7_Tran\CADD_Sheets\0468K89-shl-by-rs.dgn



TWM, INC.
 www.twm-inc.com
 IL DESIGN FIRM
 LICENSE NO:
 184-001220

USER NAME = dllee	DESIGNED - JCL	REVISED -
DRAWN - BCS	REVISIONS -	
PLOT SCALE = 10,0000 * / in.	CHECKED - TBP	REVISED -
PLOT DATE = 1/7/2026	DATE - JAN 2026	REVISED -

STATE OF ILLINOIS
DEPARTMENT OF TRANSPORTATION

TYPICAL SECTIONS

SCALE: NTS SHEET 1 OF 1 SHEETS STA. TO STA.

F.A.P. RTE.	SECTION	COUNTY	TOTAL SHEETS	SHEET NO.
318	(0602;21,20)PP	*	8	4
*PUTNAM & MARSHALL		CONTRACT NO. 68K89		
ILLINOIS FED. AID PROJECT				

NB FULL DEPTH PAVEMENT PATCHING SCHEDULE							
#	LANE (SEE TYPICALS)	LENGTH	LANE WIDTH	PAVEMENT PATCHING, TYPE I, 14 INCH	PAVEMENT PATCHING, TYPE II, 14 INCH	PAVEMENT PATCHING, TYPE III, 14 INCH	PAVEMENT PATCHING, TYPE IV, 14 INCH
		(FT)	(FT)	(SQ YD)	(SQ YD)	(SQ YD)	(SQ YD)
IL 29							
300TH AVENUE (MARSHALL MM 13.47 / PUTNAM MM 0.00)							
001	NB	50.0	5.0				27.8
002	NB	8.0	8.0		7.1		
003	NB	8.0	8.0		7.1		
004	NB	10.0	8.0		8.9		
005	NB	22.0	8.0			19.6	
006	NB	12.0	8.0		10.7		
007	NB	8.0	14.0		12.4		
008	NB	14.0	8.0		12.4		
009	NB	6.0	14.0		9.3		
010	NB	8.0	8.0		7.1		
011	NB	8.0	8.0		7.1		
012	NB	8.0	14.0		12.4		
013	NB	8.0	14.0		12.4		
014	NB	20.0	8.0			17.8	
015	NB	20.0	8.0			17.8	
016	NB	8.0	8.0		7.1		
017	NB	8.0	8.0		7.1		
018	NB	20.0	8.0			17.8	
019	NB	6.0	8.0		5.3		
020	NB	8.0	10.0		8.9		
021	NB	8.0	30.0				26.7
022	NB	14.0	14.0			21.8	
023	NB	8.0	20.0			17.8	
024	NB	6.0	8.0		5.3		
025	NB	20.0	14.0				31.1
026	NB	6.0	6.0	4.0			
027	NB	8.0	30.0				26.7
028	NB	8.0	8.0		7.1		
BRADFORD BLACKTOP (PUTNAM MM 2.61)							
029	NB	8.0	8.0		7.1		
030	NB	8.0	8.0		7.1		
LOG CABIN ROAD (PUTNAM 4.96)							
031	NB	6.0	8.0		5.3		
032	NB	6.0	8.0		5.3		
033	NB	4.0	8.0	3.6			
034	NB	12.0	8.0		10.7		
035	NB	147.0	8.0				130.7
036	NB	6.0	5.0	3.3			
037	NB	20.0	8.0			17.8	
038	NB	33.0	8.0				29.3
039	NB	12.0	8.0		10.7		
040	NB	20.0	8.0			17.8	
041	NB	4.0	6.0	2.7			
042	NB	14.0	4.0		6.2		
043	NB	57.0	8.0				50.7
044	NB	28.0	14.0				43.6
045	NB	6.0	8.0		5.3		
046	NB	10.0	14.0			15.6	
047	NB	30.0	3.0		10.0		
PUTNAM COUNTY LINE (PUTNAM MM 6.32 / BUREAU MM 0.00)							
NB SUBTOTAL:				13.6	215.8	163.6	366.4
ANTICIPATED FAILURES (5%):				0.7	10.8	8.2	18.3
NB TOTAL:				14.2	226.6	171.7	384.8
NB PAY ITEM TOTAL:				14	227	172	385

NOTES:

1. MILE MARKER STATIONS REFER TO COUNTY MILE MARKER SIGNS.

MODEL: D:\p1\11
FILE NAME: P:\2023\20230824\24 - IL 29 Patching\4_CADD - DIV\4.7_Tran\CADD_Sheets\0468K89-sch-schedule.dgn



USER NAME = dllee
DESIGNED - JCL
DRAWN - BCS
CHECKED - TBP
DATE - JAN 2026

REVISOR -
REVISED -
REVISED -
REVISED -

STATE OF ILLINOIS
DEPARTMENT OF TRANSPORTATION

SCHEDULE OF QUANTITIES

SCALE: NA SHEET 1 OF 3 SHEETS STA. TO STA.

F.A.P. RTE.	SECTION	COUNTY	TOTAL SHEETS	SHEET NO.
318	(0602;21,20)PP	*	8	5
*PUTNAM & MARSHALL		CONTRACT NO. 68K89		
ILLINOIS FED. AID PROJECT				

SB FULL DEPTH PAVEMENT PATCHING SCHEDULE							
#	LANE (SEE TYPICALS)	LENGTH	LANE WIDTH	PAVEMENT PATCHING, TYPE I, 14 INCH	PAVEMENT PATCHING, TYPE II, 14 INCH	PAVEMENT PATCHING, TYPE III, 14 INCH	PAVEMENT PATCHING, TYPE IV, 14 INCH
		(FT)	(FT)	(SQ YD)	(SQ YD)	(SQ YD)	(SQ YD)
IL 29							
300TH AVENUE (MARSHALL MM 13.47 / PUTNAM MM 0.00)							
048	SB	8.0	8.0		7.1		
049	SB	8.0	8.0		7.1		
050	SB	12.0	8.0		10.7		
051	SB	8.0	14.0		12.4		
052	SB	6.0	14.0		9.3		
053	SB	8.0	8.0		7.1		
054	SB	8.0	14.0		12.4		
055	SB	6.0	14.0		9.3		
056	SB	14.0	14.0			21.8	
057	SB	8.0	20.0			17.8	
058	SB	10.0	14.0			15.6	
059	SB	6.0	8.0		5.3		
060	SB	4.0	14.0		6.2		
061	SB	6.0	8.0		5.3		
062	SB	20.0	14.0				31.1
BRADFORD BLACKTOP (PUTNAM MM 2.61)							
LOG CABIN ROAD (PUTNAM 4.96)							
063	SB	30.0	3.0		10.0		
064	SB	15.0	3.0		5.0		
065	SB	10.0	3.0	3.3			
066	SB	213.0	5.0				118.3
067	SB	7.0	5.0	3.9			
068	SB	5.0	10.0		5.6		
069	SB	51.0	8.0				45.3
070	SB	50.0	8.0				44.4
071	SB	16.0	14.0			24.9	
072	SB	22.0	14.0				34.2
073	SB	26.0	8.0			23.1	
PUTNAM COUNTY LINE (PUTNAM MM 6.32 / BUREAU MM 0.00)							
SB SUBTOTAL:				7.2	113.0	103.1	273.4
ANTICIPATED FAILURES (5%):				0.4	5.7	5.2	13.7
SB TOTAL:				7.6	118.7	108.3	287.1
SB PAY ITEM TOTAL:				8	119	108	287

NOTES:

1. MILE MARKER STATIONS REFER TO COUNTY MILE MARKER SIGNS.

MODEL: D:\p1\11...
FILE NAME: P:\2023\20230804\24 - IL 29 Patching\4_CADD - DIV\04_7_Trans\CADD_Sheets\0468K89-sht-schedule.dgn



USER NAME = dllee	DESIGNED - JCL	REVISED -
	DRAWN - BCS	REVISED -
PLOT SCALE = 10,0000 * / in.	CHECKED - TBP	REVISED -
PLOT DATE = 1/7/2026	DATE - JAN 2026	REVISED -

STATE OF ILLINOIS
DEPARTMENT OF TRANSPORTATION

SCHEDULE OF QUANTITIES

SCALE: NA SHEET 2 OF 3 SHEETS STA. TO STA.

F.A.P. RTE.	SECTION	COUNTY	TOTAL SHEETS	SHEET NO.
318	(0602;21,20)PP	*	8	6
*PUTNAM & MARSHALL		CONTRACT NO. 68K89		
ILLINOIS		FED. AID PROJECT		

NB PARTIAL DEPTH PATCHING, 2.25" SCHEDULE					
#	LANE (SEE TYPICALS)	LENGTH	LANE WIDTH	PARTIAL DEPTH PATCHING (SPECIAL)	PARTIAL DEPTH PATCHING
		(FT)	(FT)	(SQ. YD.)	(TON)
IL 29					
IL 18 (MARSHALL MM 10.93)					
074	NB	110.0	14.0	171.1	22.14
ANTICIPATED FAILURES				42.8	5.53
300TH AVENUE (MARSHALL MM 13.47 / PUTNAM MM 0.00)					
075	NB	10.0	14.0	15.6	2.01
076	NB	10.0	14.0	15.6	2.01
077	NB	10.0	14.0	15.6	2.01
078	NB	10.0	14.0	15.6	2.01
079	NB	10.0	14.0	15.6	2.01
080	NB	12.0	14.0	18.7	2.42
081	NB	10.0	14.0	15.6	2.01
082	NB	16.0	14.0	24.9	3.22
083	NB	10.0	14.0	15.6	2.01
084	NB	10.0	14.0	15.6	2.01
085	NB	20.0	14.0	31.1	4.03
086	NB	12.0	14.0	18.7	2.42
087	NB	14.0	14.0	21.8	2.82
088	NB	14.0	14.0	21.8	2.82
089	NB	12.0	14.0	18.7	2.42
090	NB	10.0	14.0	15.6	2.01
091	NB	10.0	14.0	15.6	2.01
092	NB	14.0	14.0	21.8	2.82
093	NB	14.0	14.0	21.8	2.82
094	NB	22.0	6.0	14.7	1.90
095	NB	8.0	14.0	12.4	1.61
096	NB	10.0	14.0	15.6	2.01
096	NB	12.0	14.0	18.7	2.42
096	NB	14.0	14.0	21.8	2.82
096	NB	50.0	14.0	77.8	10.06
097	NB	10.0	14.0	15.6	2.01
ANTICIPATED FAILURES				215.9	27.94
BRADFORD BLACKTOP (PUTNAM MM 2.61)					
PUTNAM COUNTY LINE (PUTNAM MM 6.32 / BUREAU MM 0.00)					
TOTAL:				960.9	124.3

NOTES :

1. MILE MARKER STATIONS REFER TO COUNTY MILE MARKER SIGNS.
2. SEE SPECIAL PROVISIONS.

SB PARTIAL DEPTH PATCHING, 2.25" SCHEDULE					
#	LANE (SEE TYPICALS)	LENGTH	LANE WIDTH	PARTIAL DEPTH PATCHING (SPECIAL)	PARTIAL DEPTH PATCHING
		(FT)	(FT)	(SQ. YD.)	(TON)
IL 29					
IL 18 (MARSHALL MM 10.93)					
117	SB	100.0	12.0	133.3	17.25
ANTICIPATED FAILURES				33.3	5.18
300TH AVENUE (MARSHALL MM 13.47 / PUTNAM MM 0.00)					
118	SB	10.0	14.0	15.6	2.01
119	SB	10.0	14.0	15.6	2.01
120	SB	10.0	14.0	15.6	2.01
121	SB	10.0	14.0	15.6	2.01
122	SB	10.0	14.0	15.6	2.01
123	SB	12.0	14.0	18.7	2.42
124	SB	16.0	14.0	24.9	3.22
125	SB	10.0	14.0	15.6	2.01
126	SB	10.0	14.0	15.6	2.01
127	SB	20.0	14.0	31.1	4.03
128	SB	12.0	14.0	18.7	2.42
129	SB	14.0	14.0	21.8	2.82
130	SB	14.0	14.0	21.8	2.82
131	SB	12.0	14.0	18.7	2.42
132	SB	10.0	14.0	15.6	2.01
133	SB	10.0	14.0	15.6	2.01
134	SB	14.0	14.0	21.8	2.82
135	SB	14.0	14.0	21.8	2.82
136	SB	8.0	14.0	12.4	1.61
137	SB	10.0	14.0	15.6	2.01
138	SB	12.0	14.0	18.7	2.42
139	SB	50.0	14.0	77.8	10.06
140	SB	10.0	14.0	15.6	2.01
ANTICIPATED FAILURES				166.7	20.70
BRADFORD BLACKTOP (PUTNAM MM 2.61)					
PUTNAM COUNTY LINE (PUTNAM MM 6.32 / BUREAU MM 0.00)					
TOTAL:				812.4	105.1

MODEL: D:\p4\h...
 FILE NAME: P:\2023\20230804\234 - IL 29 Patching\A_CADD - DIV\04_7_Tran\CADD_Sheets\0468K89-sch-schedule.dgn

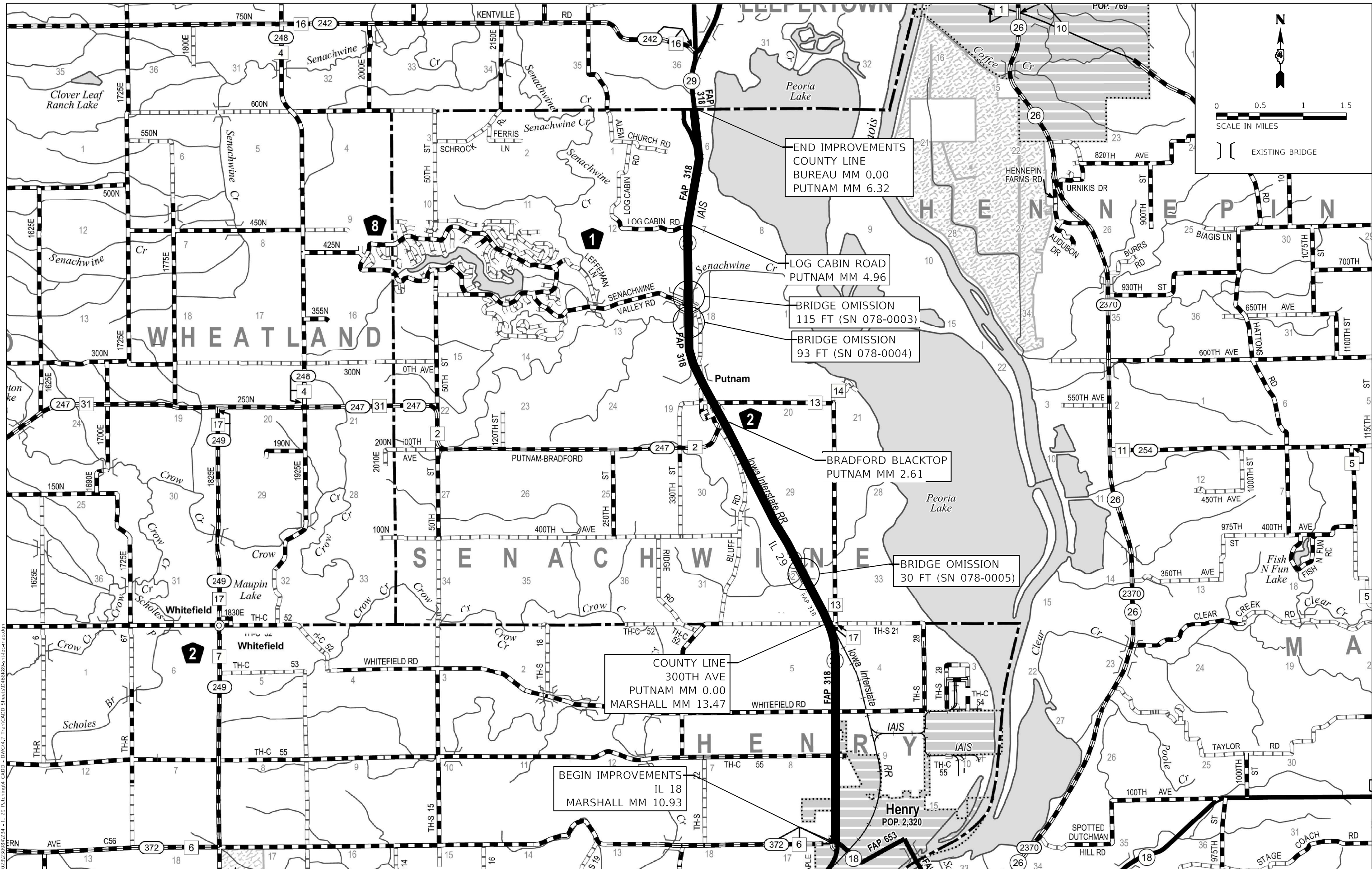


USER NAME = dlcc	DESIGNED - JCL	REVISED -
	DRAWN - BCS	REVISED -
PLOT SCALE = 10,0000 * / in.	CHECKED - TBP	REVISED -
PLOT DATE = 1/7/2026	DATE - JAN 2026	REVISED -

**STATE OF ILLINOIS
DEPARTMENT OF TRANSPORTATION**

SCHEDULE OF QUANTITIES			
SCALE: NA	SHEET 3	OF 3 SHEETS	STA. TO STA.

F.A.P. RTE.	SECTION	COUNTY	TOTAL SHEETS	SHEET NO.
318	(0602;21,20)PP	*	8	7
*PUTNAM & MARSHALL			CONTRACT NO. 68K89	
ILLINOIS FED. AID PROJECT				



USER NAME = dlce	DESIGNED - JCL	REVISED -
PLOT SCALE = 10,0000' / in.	DRAWN - BCS	REVISED -
PLOT DATE = 1/7/2026	CHECKED - TBP	REVISED -
	DATE - JAN 2026	REVISED -

**STATE OF ILLINOIS
DEPARTMENT OF TRANSPORTATION**

LOCATION MAP

SCALE: 1" = 5280' SHEET 1 OF 1 SHEETS STA. TO STA.

F.A.P. RTE. 318	SECTION (0602;21,20)PP	COUNTY *	TOTAL SHEETS 8	SHEET NO. 8
*PUTNAM & MARSHALL			CONTRACT NO. 68K89	
ILLINOIS FED. AID PROJECT				

MODEL: Dwg11
 FILE NAME: P:\2023\2308\2308A\23A - IL 29 Patch\14 CAD - DWG\14.7 Tran\CADD_Sheets\068K89-Sub\loc-map.dwg
 MODEL: Dwg11
 FILE NAME: P:\2023\2308\2308A\23A - IL 29 Patch\14 CAD - DWG\14.7 Tran\CADD_Sheets\068K89-Sub\loc-map.dwg