

STATE OF ILLINOIS
DEPARTMENT OF TRANSPORTATION

F.A.I. RTE.	SECTION	COUNTY	TOTAL SHEETS	SHEET NO.
39	CM PATCHING 2026-1	MCLEAN	8	1
		ILLINOIS	CONTRACT NO. 70H82	

FOR INDEX OF SHEETS, SEE SHEET NO. 2

FOR SUMMARY OF QUANTITIES, SEE SHEET NOS. 3 - 4

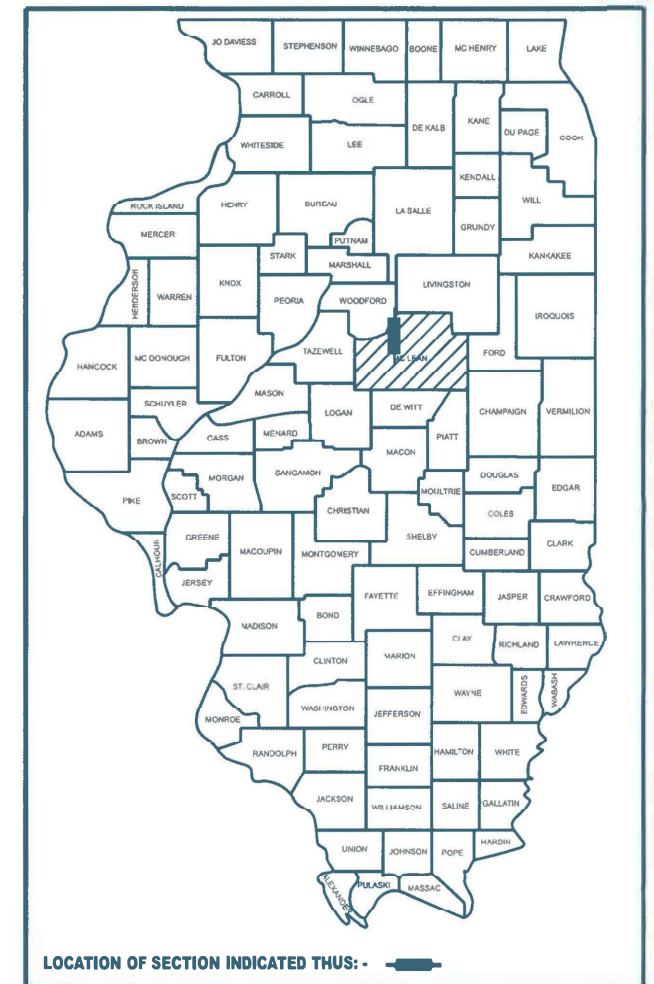
PROPOSED HIGHWAY PLANS

FAI ROUTE 39 (I-39) SECTION CM PATCHING 2026-1 CONTRACT MAINTENANCE PATCHING MCLEAN COUNTY

C-95-018-26

TRAFFIC INFORMATION

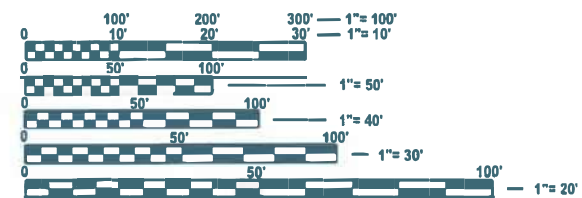
	PAS 472 Leg "A" to I-39 SB	I-39 NB to PAS 472 Leg "B"	I-39 SB to PAS 472 Leg "C"	PAS 472 to I-39 NB Leg "D"
2025 ADT =	400	450	275	375
2035 ADT =	400	450	300	400
2045 ADT =	450	500	300	400
2045 AM DHV =	55	40	30	30
2045 PM DHV =	40	55	30	50
P.U. & P.C.% =	90.0	88.9	85.5	81.3
(Bus, 6T, & 3A)SU% =	5.0	4.4	3.6	8.0
(All Semi)MU% =	5.0	6.7	10.9	10.7



TOWNSHIP: HUDSON

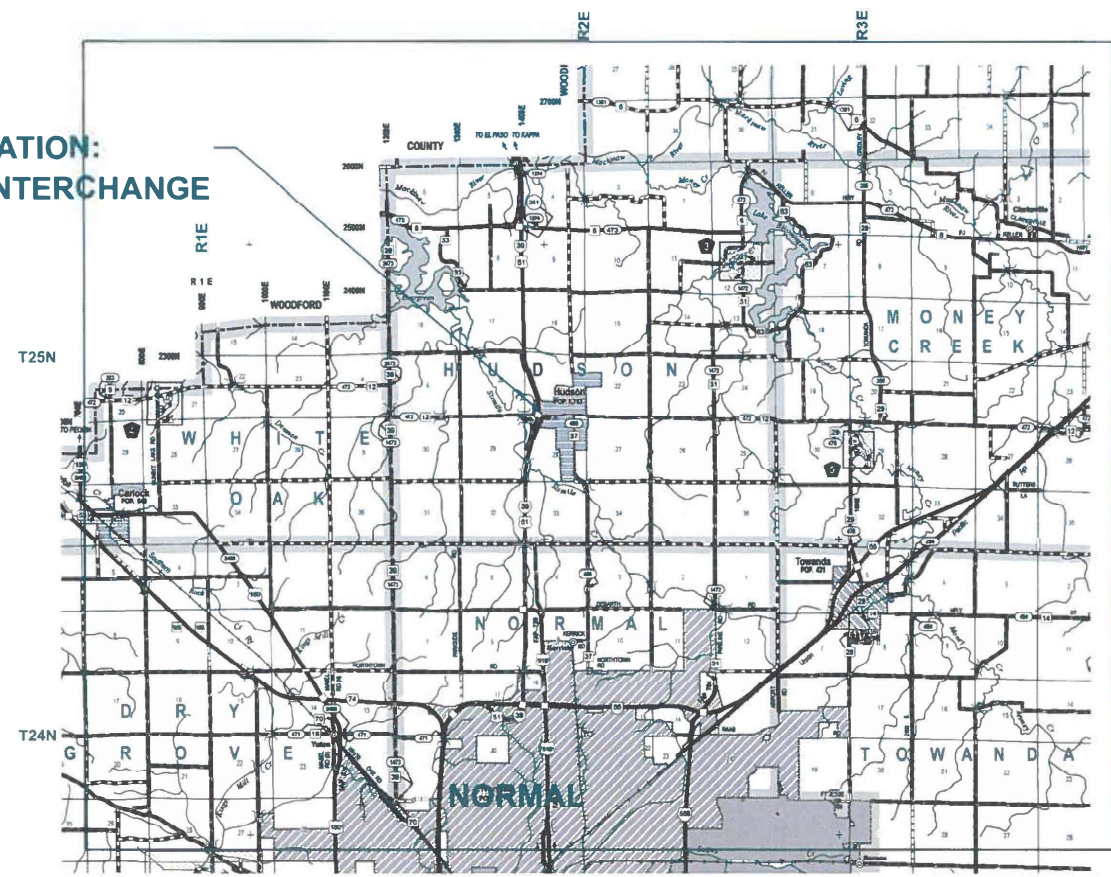
DESIGN DESIGNATION: INTERSTATE

PROJECT LOCATION:
I-39 HUDSON INTERCHANGE



FULL SIZE PLANS HAVE BEEN PREPARED USING STANDARD ENGINEERING SCALES. REDUCED SIZED PLANS WILL NOT CONFORM TO STANDARD SCALES. IN MAKING MEASUREMENTS ON REDUCED PLANS, THE ABOVE SCALES MAY BE USED.

J.U.L.I.E.
JOINT UTILITY LOCATION INFORMATION FOR EXCAVATION
1-800-892-0123
OR 811



GROSS LENGTH = 9,639.82 FT. = 1.825 MILES
NET LENGTH = 276.00 FT. = 0.052 MILE

PROJECT ENGINEER: JASON STULTS, P.E.
PROJECT MANAGER: JASON GOBLE
PHONE: (217) 466-7220

CONTRACT NO. 70H82

STATE OF ILLINOIS
DEPARTMENT OF TRANSPORTATION

SUBMITTED 12/2 2025
Kenneth A. Lamott REGIONAL ENGINEER

March 2026
[Signature] ENGINEER OF DESIGN AND ENVIRONMENT

March 2026
[Signature] DIRECTOR OF HIGHWAYS PROJECT IMPLEMENTATION

PRINTED BY THE AUTHORITY
OF THE STATE OF ILLINOIS

COMMITMENTS

THERE ARE NO COMMITMENTS FOR THIS PROJECT.

GENERAL NOTES

G.N.-100A
ELECTRONIC FILES AND/OR ELECTRONIC SURVEY INFORMATION INCLUDING CADD FILES WILL NOT BE AVAILABLE TO THE CONTRACTOR.

G.N.-406S
PROJECT POSTED SPEED LIMITS

THE FOLLOWING TABLE IS A LISTING OF POSTED SPEED LIMITS WITHIN THE PROJECT LIMITS. THE ENGINEER SHALL FIELD VERIFY THESE LIMITS:

STATION	TO	STATION	POSTED SPEED LIMIT (MPH)
RAMP		RAMP	45

G.N.-440B
THE EXISTING TIE BARS BETWEEN THE EXISTING PAVEMENT AND EXISTING MEDIANS, GUTTERS AND/OR COMBINATION CURB AND GUTTERS THAT ARE FOUND SUITABLE FOR REUSE SHALL BE CLEANED, STRAIGHTENED AND INCORPORATED INTO THE NEW CONSTRUCTION. ANY EXISTING TIE BARS THAT ARE FOUND UNSUITABLE TO BE INCORPORATED INTO THE PROPOSED CONSTRUCTION DUE TO EXCESSIVE RUSTING OR DISTRESS SHALL BE REMOVED FLUSH WITH THE FACE OF THE EXISTING CONCRETE AND DISPOSED OF OUTSIDE THE LIMITS OF THE RIGHT-OF-WAY IN ACCORDANCE WITH ARTICLE 202.03 OF THE STANDARD SPECIFICATIONS.

THIS WORK WILL NOT BE PAID FOR SEPARATELY BUT SHALL BE CONSIDERED INCLUDED IN THE VARIOUS REMOVAL PAY ITEMS AND NO ADDITIONAL COMPENSATION WILL BE ALLOWED.

G.N.-703A
SHORT TERM PAVEMENT MARKING SHALL BE APPLIED TO THE PAVEMENT AFTER ANY OF THE FOLLOWING: COLD MILLING AND/OR PLACING BITUMINOUS MATERIALS (TACK COAT), LEVELING BINDER (MACHINE METHOD), BINDER AND SURFACE COURSES. SHORT TERM PAVEMENT MARKING PLACED ON THE SURFACE SHALL COINCIDE WITH THE FINAL PAVEMENT STRIPING. SHORT TERM PAVEMENT MARKING PLACED PRIOR TO THE SURFACE SHALL COINCIDE WITH THE EXISTING PAVEMENT MARKINGS. USE 4 FEET PER 40 FEET (OR 10% PER STATION).

G.N.-781
THE FINAL PAVEMENT MARKINGS SHALL BE IN PLACE PRIOR TO PLACING THE RAISED REFLECTIVE PAVEMENT MARKERS.

LIST OF HIGHWAY STANDARDS

STANDARD NO.	DESCRIPTION
000001-09	STANDARD SYMBOLS, ABBREVIATIONS AND PATTERNS
001001-02	AREAS OF REINFORCEMENT BARS
001006-00	DECIMAL OF AN INCH AND OF A FOOT
420001-11	PAVEMENT JOINTS
420701-03	PAVEMENT WELDED WIRE REINFORCEMENT
606301-04	PC CONCRETE ISLANDS AND MEDIANS
701456-05	PARTIAL EXIT RAMP CLOSURE, FREEWAY/EXPRESSWAY
701901-11	TRAFFIC CONTROL DEVICES
D5 60621900	CONCRETE MEDIAN, TYPE SM (SPECIAL)
D5 60623711	SIGN POST BLOCKOUTS
D5 7800BBBB	PAVEMENT MARKING (INTERSTATE & MULTILANE APPLICATIONS)

INDEX OF SHEETS

SHEET NO.	DESCRIPTION
1	COVER SHEET
2	INDEX OF SHEETS
2	HIGHWAY STANDARDS
2	GENERAL NOTES
2	COMMITMENTS
3 - 4	SUMMARY OF QUANTITIES
5	TYPICAL CROSS SECTION
6	SCHEDULE OF QUANTITIES
7-8	PATCHING PLAN SHEET

MODEL: General Notes-1 (Sheet)
FILE NAME: c:\pwworking\jason.goble@illinois.gov\112524\310570182.sht GenNotes.dgn

USER NAME = jason.goble	DESIGNED - JRG	REVISED -
	DRAWN - JRG	REVISED -
	CHECKED -	REVISED -
PLOT DATE = 12/4/2025	DATE -	REVISED -

**STATE OF ILLINOIS
DEPARTMENT OF TRANSPORTATION**

**INDEX OF SHEETS, GENERAL NOTES,
LIST OF HIGHWAY STANDARDS, COMMITMENTS**

SCALE: SHEET 1 OF 1 SHEETS STA. TO STA.

F.A.I. RTE.	SECTION	COUNTY	TOTAL SHEETS	SHEET NO.
39	CM PATCHING 2026-1	MCLEAN	8	2
CONTRACT NO. 70H82				
ILLINOIS FEDERAL PROJECT				

LOCATION OF WORK: FAI 39 (I-39)
 RURAL
 INTERSTATE
 HUDSON INTERCHANGE RAMPS
 COUNTY: MCLEAN
 FUNDING BREAKOUT: STATE 100%
 CONSTRUCTION TYPE CODE: 0006

CODE NO.	ITEM	UNIT	TOTAL QUANTITY
44201299	DOWEL BARS 1 1/2	EACH	1,072.0
44213000	PATCHING REINFORCEMENT	SQ YD	1,144.6
44213200	SAW CUTS	FOOT	1,446.0
44213210	TIE BARS 1 3/8"	EACH	220.0
48102100	AGGREGATE WEDGE SHOULDER, TYPE B	TON	32.0
48300500	PORTLAND CEMENT CONCRETE SHOULDERS 10"	SQ YD	721.8
67100100	MOBILIZATION	LUMP SUM	1.0
70100825	TRAFFIC CONTROL AND PROTECTION, STANDARD 701456	LUMP SUM	1.0
70103815	TRAFFIC CONTROL SURVEILANCE	CAL DAY	8.0
70107025	CHANGEABLE MESSAGE SIGN	CAL DA	28.0
70307120	TEMPORARY PAVEMENT MARKING - LINE - 4" - TYPE IV TAPE	FOOT	640.0
* 78008310	POLYUREA PAVEMENT MARKING TYPE II - LINE 4"	FOOT	640.0
* 78008350	POLYUREA PAVEMENT MARKING TYPE II - LINE 12"	FOOT	48.0
* 78011025	GROOVING FOR RECESSED PAVEMENT MARKING 5"	FOOT	640.0
* 78011065	GROOVING FOR RECESSED PAVEMENT MARKING 13"	FOOT	48.0
* SPECIALTY ITEM			

MODEL: Summary of Quantities-1 (Sheet)
 FILE NAME: c:\pw\work\paw\jason.goble@illinois.gov\1125243\0570H82-sh-SOO.dgn

USER NAME = jason.goble	DESIGNED - JRG	REVISED -
	DRAWN - JRG	REVISED -
	CHECKED -	REVISED -
PLOT DATE = 12/9/2025	DATE -	REVISED -

**STATE OF ILLINOIS
 DEPARTMENT OF TRANSPORTATION**

SUMMARY OF QUANTITIES			
SCALE:	SHEET 1	OF 2	SHEETS

F.A.I. RTE.	SECTION	COUNTY	TOTAL SHEETS	SHEET NO.
39	CM PATCHING 2026-1	MCLEAN	8	3
CONTRACT NO. 70H82				
ILLINOIS FED. AID PROJECT				

LOCATION OF WORK: FAI 39 (I-39)
 RURAL
 INTERSTATE
 HUDSON INTERCHANGE RAMP
 COUNTY: MCLEAN
 FUNDING BREAKOUT: STATE 100%
 CONSTRUCTION TYPE CODE: 0006

CODE NO.	ITEM		TOTAL QUANTITY
* 78100100	RAISED REFLECTIVE PAVEMENT MARKER	EACH	7.0
* 78200020	CURB REFLECTORS	EACH	7.0
X4420684	CLASS B PATCHES, TYPE IV, 10 INCH (SPECIAL)	SQ YD	1,144.6
X6061902	CONCRETE MEDIAN, TYPE SM (SPECIAL)	SQ FT	259.5
Z0013798	CONSTRUCTION LAYOUT	LUMP SUM	1.0
* SPECIALTY ITEM			

MODEL: SOO 2 [Sheet]
 FILE NAME: c:\p\work\wvitol\jason.goble@illinois.gov\1125243\0570H82-hh-SOO.dgn

USER NAME = jason.goble	DESIGNED -	REVISED -
	DRAWN -	REVISED -
	CHECKED -	REVISED -
PLOT DATE = 12/4/2025	DATE -	REVISED -

**STATE OF ILLINOIS
 DEPARTMENT OF TRANSPORTATION**

SUMMARY OF QUANTITIES

SCALE: SHEET 2 OF 2 SHEETS STA. TO STA.

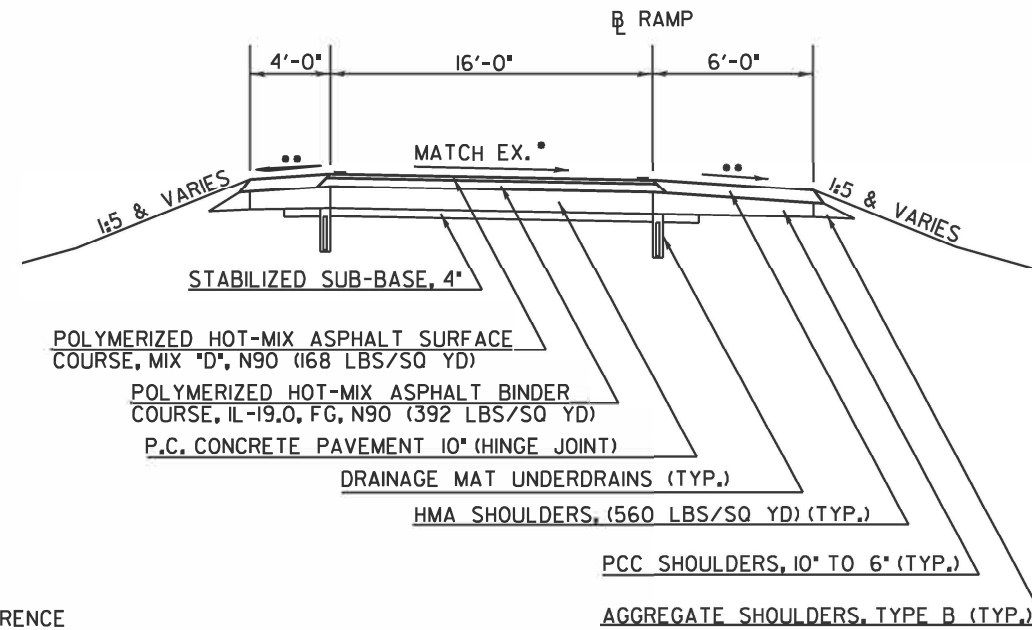
F.A.I. RTE.	SECTION	COUNTY	TOTAL SHEETS	SHEET NO.
39	CM PATCHING 2026-1	MCLEAN	8	8
CONTRACT NO. 70H82				
ILLINOIS FED. AID PROJECT				

EXISTING TYPICAL SECTION F.A.I. 39

1

C.H. 12 INTERCHANGE RAMPS

RAMP	STATION	IO	STATION
RAMP A	0+00.00		23+95.61
RAMP B	0+00.00		21+96.45
RAMP C	0+00.00		23+00.49
RAMP D	0+00.00		27+47.27



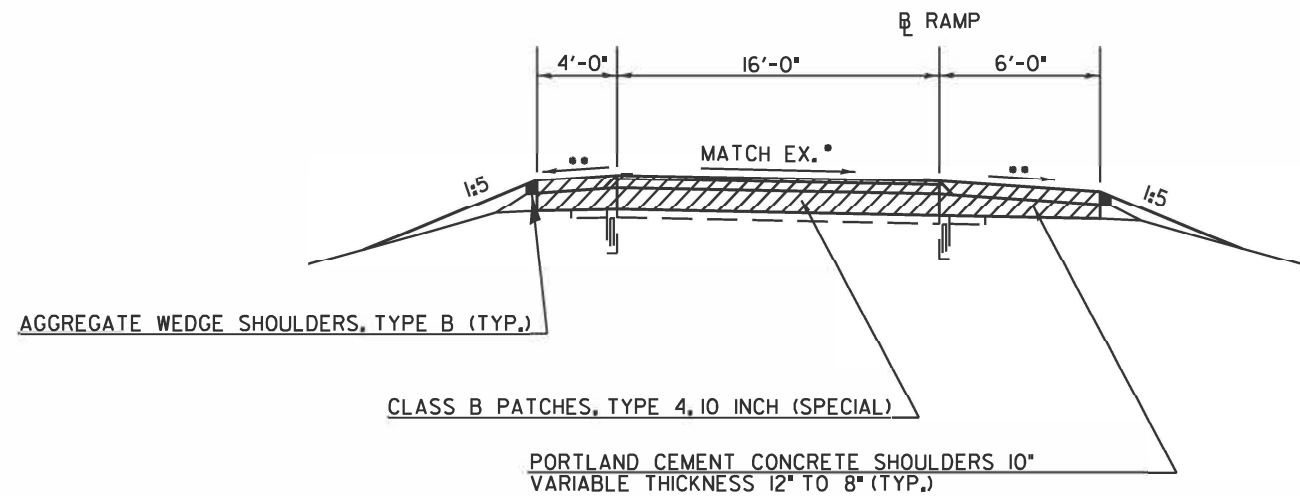
- SLOPE VARIES FOR SUPERELEVATION IN CURVES
- SLOPE VARIES IN SUPERELEVATION WITH MAXIMUM OF 0.08 FT/FT DIFFERENCE

PROPOSED TYPICAL SECTION F.A.I. 39

1

C.H. 12 INTERCHANGE RAMPS

RAMP	STATION	IO	STATION
RAMP A	0+00.00		23+95.61
RAMP B	0+00.00		21+96.45
RAMP C	0+00.00		23+00.49
RAMP D	0+00.00		27+47.27



- SLOPE VARIES FOR SUPERELEVATION IN CURVES
- SLOPE VARIES IN SUPERELEVATION WITH MAXIMUM OF 0.08 FT/FT DIFFERENCE

MODEL: Typical Sections-1 [Sheet]
FILE NAME: c:\pwworking\jason.goble\112524\310570\h82-sm-typicals.dgn

USER NAME = jason.goble	DESIGNED - JRG	REVISED -
	DRAWN - JRG	REVISED -
	CHECKED -	REVISED -
PLOT DATE = 12/4/2025	DATE -	REVISED -

STATE OF ILLINOIS
DEPARTMENT OF TRANSPORTATION

TYPICAL SECTIONS
FAI 39 RAMPS AT CH 12

SCALE: SHEET 1 OF 1 SHEETS STA. TO STA.

F.A.I. RTE.	SECTION	COUNTY	TOTAL SHEETS	SHEET NO.
39	CM PATCHING 2026-1	MCLEAN	8	5
CONTRACT NO. 70H82			ILLINOIS FED. AID PROJECT	

PATCHING SCHEDULE OF QUANTITIES

					PCC SHOULDERS 10"	CLASS B TYPE IV, 10" (SPECIAL)	DOWEL BARS 1 1/2"	SAW CUTS	TIE BARS 1 3/8"	PATCHING REINFORCEMENT
APPROX. STATION	DIRECTION	APPROX. STATION	LENGTH (FT)	WIDTH (FT)	48300500 (SQ YD)	X4420684 (SQ YD)	44201299 (SQ YD)	44213200 (FOOT)	44213210 (EACH)	44213000 (SQ YD)
LOCATION - FAI 39 HUDSON RAMPS										
0+23.96	NE RAMP	0+87.96	63.0	47.0	104.4	320.8	270	330.0	42.0	329.0
20+54.57	SE RAMP	21+70.58	113.0	50.0	363.7	401.6	432	489.0	75.0	627.8
16+05.55	SE RAMP DL	16+65.55	60.0	12.0	63.0	74.7	50	216.0	40.0	80.0
0+22.49	SW RAMP	1+18.49	95.0	42.0	190.7	347.5	320.0	411.0	63.0	443.3
TOTAL:					721.8	1144.6	1072.00	1446.0	220.0	1480.1
USE:					721.8	1144.6	1072	1446	220	1480.1

NOTE: PATCHING QUANTITIES CALCULATED BY CADD.

PAVEMENT MARKINGS QUANTITIES

					POLYUREA PM T2 LN 4	POLYUREA PM T2 LN 12	GROOVING FOR RECESSED PAVEMENT MARKING 5"	GROOVING FOR RECESSED PAVEMENT MARKINGS 13"	RAISED REFLECTIVE PAVEMENT MARKER	TEMPORARY PAVEMENT MARKING LINE 4" TYPE IV TAPE
STATION	LOCATION	STATION	LENGTH	WIDTH	78008310 (FOOT)	78008350 (FOOT)	78011025 (FOOT)	78011065 (FOOT)	78100100 (EACH)	70307120 (FOOT)
FAI 39 HUDSON INTERCHANGE RAMPS										
0+23.96	NE RAMP	0+87.96	63 / 40 =						1	
20+54.57	SE RAMP	21+70.58	113 / 40 =						3	
0+22.49	SW RAMP	1+18.49	95 / 40 =						3	
	SE RAMP RT	21+70.58		12"		12		12		
	SE RAMP LT	21+70.58		12"		12		12		
0+22.49	SW RAMP RT			12"		12		12		
0+22.49	SW RAMP LT			12"		12		12		
0+23.96	NE RAMP	0+87.96	EDGE LINE	4"	171.0		171.0			171
20+54.57	SE RAMP	21+70.58	EDGE LINE	4"	247.0		247.0			247
0+22.49	SW RAMP	1+18.49	EDGE LINE	4"	222.0		222.0			222
TOTAL:					640.0	48.0	640.0	48.0	7	640
USE:					640	48	640	48	7	640

MODEL: Schedule of Quantities-1 (Sheet)
FILE NAME: c:\pw\work\paw\jason.goble@illinois.gov\112524\3\0570\82-sh-Schedules.dgn

USER NAME = jason.goble	DESIGNED - JRG	REVISED -
	DRAWN - JRG	REVISED -
	CHECKED -	REVISED -
PLOT DATE = 12/4/2025	DATE -	REVISED -

STATE OF ILLINOIS
DEPARTMENT OF TRANSPORTATION

SCHEDULE OF QUANTITIES

SCALE: SHEET 1 OF 1 SHEETS STA. TO STA.

F.A.I. RTE.	SECTION	COUNTY	TOTAL SHEETS	SHEET NO.
39	CM PATCHING 2026-1	MCLEAN	8	6
CONTRACT NO. 70H82				
ILLINOIS FED. AID PROJECT				



SEC. 21, T24N, R1E, 2ND P.M.
MCLEAN COUNTY

10.18

FAI 39 (I-39)
(RAMP C)

FAI 39
(I-39)
345+00

CL FAS 509
(CH 12)
95+00

CL FAS 509
(CH 12)
100+00

POT Sta 0+00.00
POT Sta 0+00.49
POT Sta 0+00.49

POT Sta 342+09.32



PAVEMENT REMOVAL

CL FAI 39 (I-39)
(RAMP A)

SEC. 28, T24N, R1E, 2ND P.M.
MCLEAN COUNTY

MODEL: Plan Sheet-1 (Sheet)
FILE NAME: c:\work\pww\jason.goble@illinois.gov\1125243\0570+82-shr-Plan-20.dgn

USER NAME = jason.goble	DESIGNED -	REVISED -
	DRAWN -	REVISED -
	CHECKED -	REVISED -
PLOT DATE = 12/4/2025	DATE -	REVISED -

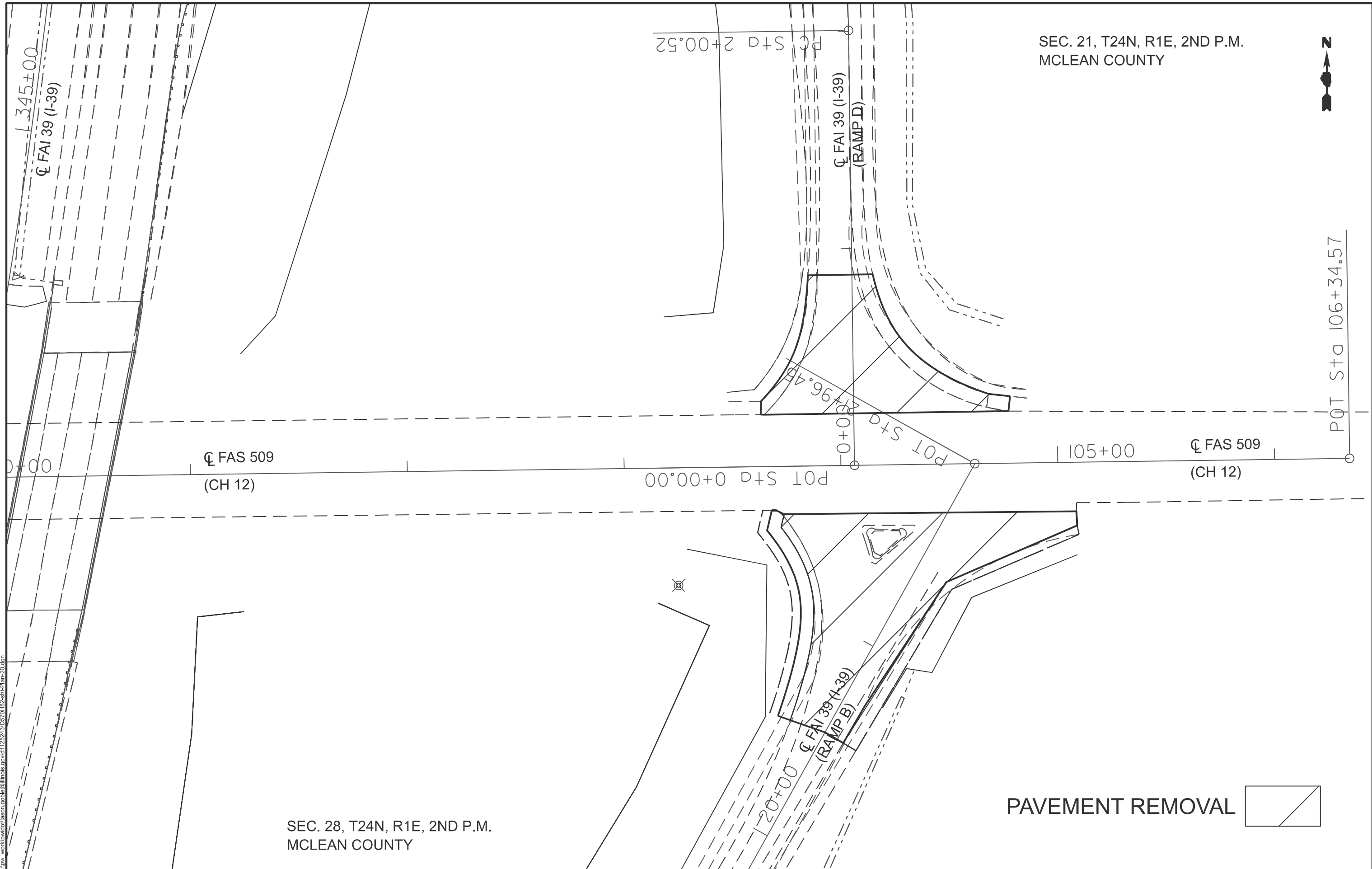
STATE OF ILLINOIS
DEPARTMENT OF TRANSPORTATION

PLAN SHEET

SCALE: SHEET 1 OF 2 SHEETS STA. TO STA.

F.A.I. RTE.	SECTION	COUNTY	TOTAL SHEETS	SHEET NO.
39	CM PATCHING 2026-1	MCLEAN	8	7
CONTRACT NO. 70H82			ILLINOIS FED. AID PROJECT	

SEC. 21, T24N, R1E, 2ND P.M.
MCLEAN COUNTY



SEC. 28, T24N, R1E, 2ND P.M.
MCLEAN COUNTY

PAVEMENT REMOVAL

MODEL: Plan Sheet2 (Sheet)
FILE NAME: c:\p\work\vector\jason.goble@illinois.gov\1125243\0570H82-sh-Plan-20.dgn

USER NAME = jason.goble	DESIGNED -	REVISED -
	DRAWN -	REVISED -
	CHECKED -	REVISED -
PLOT DATE = 12/4/2025	DATE -	REVISED -

STATE OF ILLINOIS
DEPARTMENT OF TRANSPORTATION

PLAN SHEET

SCALE: SHEET 2 OF 2 SHEETS STA. TO STA.

F.A.I. RTE.	SECTION	COUNTY	TOTAL SHEETS	SHEET NO.
39	CM PATCHING 2026-1	MCLEAN	8	8
CONTRACT NO. 70H82				
ILLINOIS FED. AID PROJECT				