

STATE OF ILLINOIS
DEPARTMENT OF TRANSPORTATION

F.A.S. RTE.	SECTION	COUNTY	TOTAL SHEETS	SHEET NO.
1774	(111B-1)BDR	LOGAN	16*	1
		ILLINOIS	CONTRACT NO. 72296	

* 16 + 2 = 18 TOTAL SHEETS

FOR INDEX OF SHEETS, SEE SHEET NO. 2

ROADWAY CLASSIFICATION

MAJOR COLLECTOR

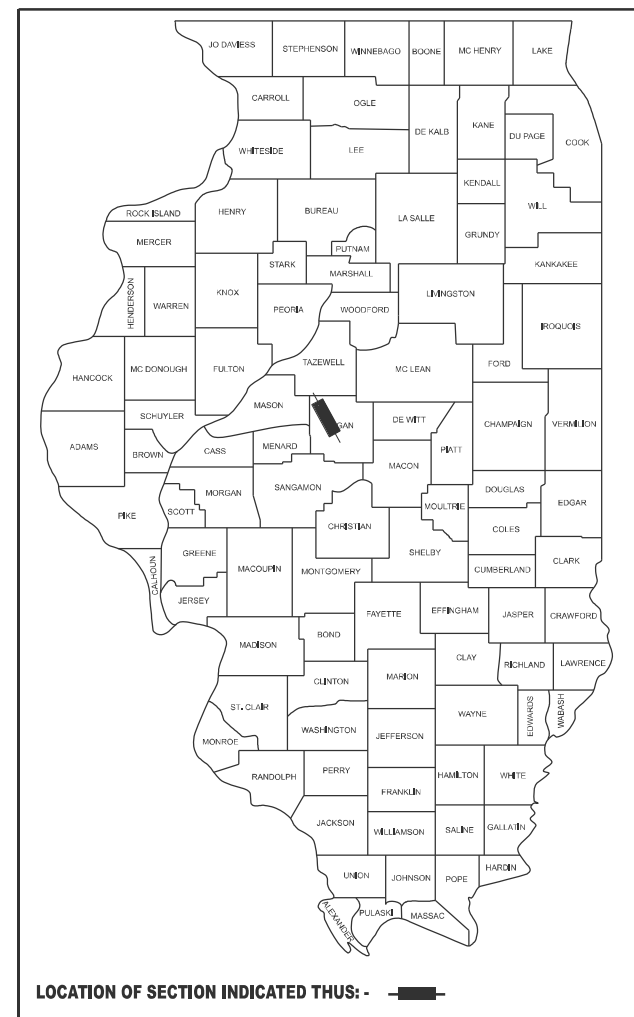
AVERAGE DAILY TRAFFIC YEAR 2022

ADT: 1,200 (2022)

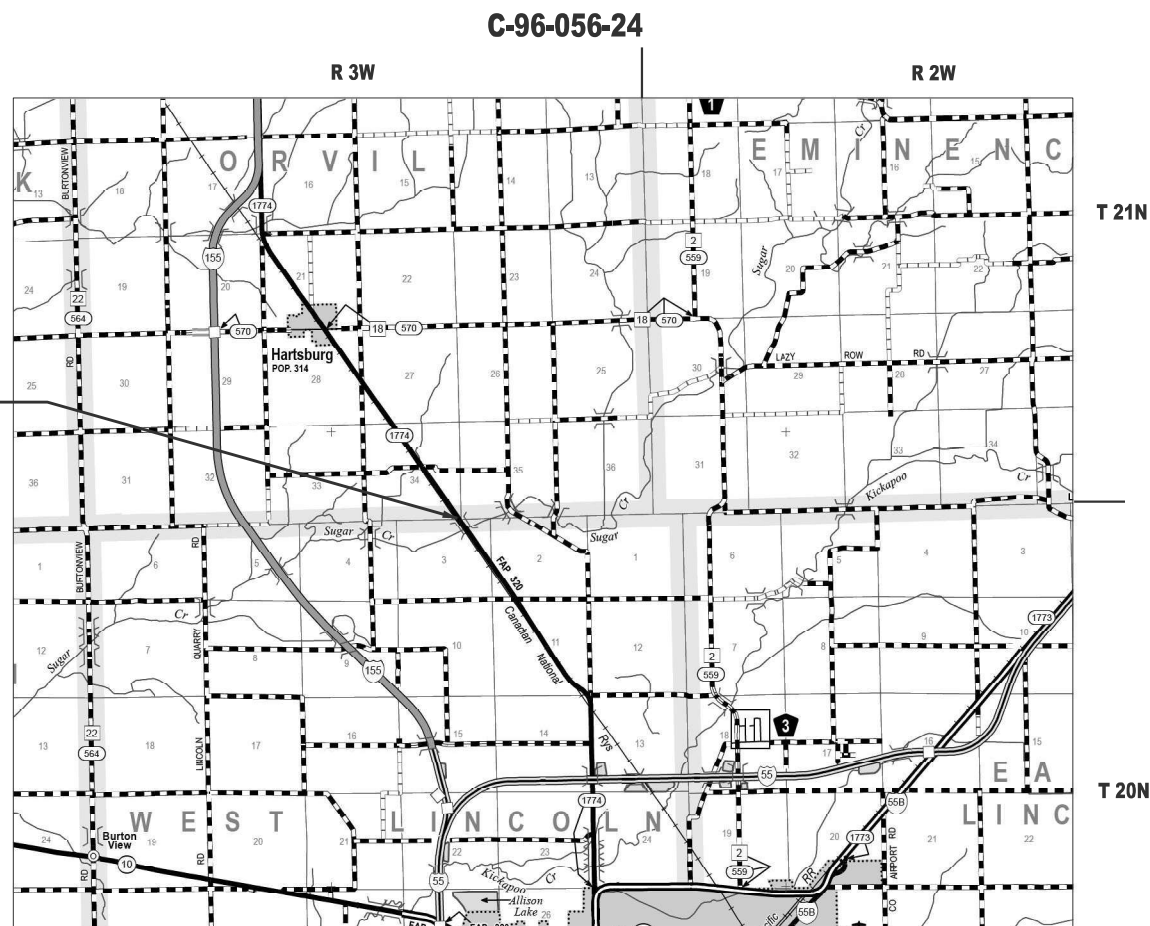
**PROPOSED
HIGHWAY PLANS**

FAS ROUTE 1774 (OLD IL 121)
SECTION (111B-1)BDR
PROJECT STP-PME 1(852)
BRIDGE DECK OVERLAY
LOGAN COUNTY

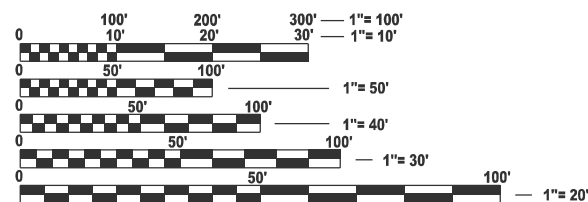
D-96-036-24



SN 054-0102
STATION 1512+06 - 1518+45
BRIDGE DECK OVERLAY



GROSS LENGTH: 639' (0.12 MILES)
NET LENGTH: 569' (0.11 MILES)



FULL SIZE PLANS HAVE BEEN PREPARED USING STANDARD ENGINEERING SCALES. REDUCED SIZED PLANS WILL NOT CONFORM TO STANDARD SCALES. IN MAKING MEASUREMENTS ON REDUCED PLANS, THE ABOVE SCALES MAY BE USED.

J.U.L.I.E.
JOINT UTILITY LOCATION INFORMATION FOR EXCAVATION
1-800-892-0123
OR 811

PROJECT ENGINEER : JAY EDWARDS (217) 785-0597
PROJECT MANAGER : JONATHAN COX (217) 782-1378

CONTRACT NO. 72296

STATE OF ILLINOIS
DEPARTMENT OF TRANSPORTATION

SUBMITTED January 30, 2026
Teresa C. Price
REGIONAL ENGINEER

March 20, 2026
[Signature]
ENGINEER OF DESIGN AND ENVIRONMENT

March 20, 2026
[Signature]
DIRECTOR OF HIGHWAYS PROJECT IMPLEMENTATION

PRINTED BY THE AUTHORITY
OF THE STATE OF ILLINOIS

6-02046-0000

STP FUNDING
80% FEDERAL
20% STATE

CODE NO.	ITEM	UNIT	TOTAL QUANTITY	BRIDGE
				0059
				RURAL
67000400	ENGINEER'S FIELD OFFICE, TYPE A	CAL MO	12	12
67100100	MOBILIZATION	L SUM	1	1
70100450	TRAFFIC CONTROL AND PROTECTION, STANDARD 701201	L SUM	1	1
70107025	CHANGEABLE MESSAGE SIGN	CAL DA	70	70
70300100	SHORT TERM PAVEMENT MARKING	FOOT	128	128
70300150	SHORT TERM PAVEMENT MARKING REMOVAL	SQ FT	21	21
* 78009005	MODIFIED URETHANE PAVEMENT MARKING - LINE 5"	FOOT	1,438	1,438
78300200	RAISED REFLECTIVE PAVEMENT MARKER REMOVAL	EACH	2	2
78300202	PAVEMENT MARKING REMOVAL - WATER BLASTING	SQ FT	599	599
X5060601	CONTAINMENT AND DISPOSAL OF NON -LEAD PAINT CLEANING RESIDUES NO. 1	L SUM	1	1
X5230172	DRAINAGE SCUPPERS TO BE ADJUSTED	EACH	4	4
X7011800	TRAFFIC CONTROL AND PROTECTION, STANDARD BLR 21	L SUM	1	1
X7200203	DETOUR SIGNING	L SUM	1	1
Z0001800	APPROACH SLAB REPAIR (PARTIAL DEPTH)	SQ YD	30	30

* SPECIALTY ITEM

REV - MS

MODEL: Summary of Quantities-1 [Sheet]
FILE NAME: c:\p\work\pav\stc\work\02046\02046-0000\110722296-rlt-SQO.dgn

USER NAME = Jonathan.Cox
PLOT DATE = 1/29/2026

DESIGNED -
DRAWN -
CHECKED -
DATE -

REVISED -
REVISED -
REVISED -
REVISED -

STATE OF ILLINOIS
DEPARTMENT OF TRANSPORTATION

SUMMARY OF QUANTITIES

SCALE: SHEET 2 OF 3 SHEETS STA. TO STA.

F.A.S. RTE.	SECTION	COUNTY	TOTAL SHEETS	SHEET NO.
1774	(111B-1)BDR	LOGAN	16	4
ILLINOIS FED. AID PROJECT			CONTRACT NO. 72296	

					40600990
LOCATION		LENGTH	WIDTH	TEMPORARY RAMP	
FAS 1774 (OLD IL 121)					SQ YD
SN 054-0102 - SUGAR CREEK					
1512+06.00	TO	1512+11.00	26	5	14.4
1518+40.00	TO	1518+45.00	26	5	14.4
TOTAL					29

						48102100
LOCATION		LENGTH (FOOT)	WIDTH (FOOT)	DEPTH (INCH)	AGGREGATE WEDGE SHOULDER, TYPE B	
FAS 1774 (OLD IL 121)						TON
1512+06.00	TO	1512+41.00	35	4.50	2.75	4.3
1518+10.00	TO	1518+45.00	35	4.50	2.75	4.3
TOTAL						9

					40600290	40600982	40604050
LOCATION		LENGTH	WIDTH	AREA	BITUMINOUS MATERIALS (TACK COAT)	HMA SURFACE REMOVAL-BUTT JOINT	HMA SURFACE COURSE IL 9.5, MIX C, N50
FAS 1774 (OLD IL 121)					FOOT	FOOT	SQ YD
SN 054-0102 - SUGAR CREEK					POUND	SQ YD	TON
1512+06.00	TO	1512+71.00	65	26	187.78	84.5	187.78
1517+80.00	TO	1518+45.00	65	26	187.78	84.5	187.78
TOTAL					169	376	37

			78300200
LOCATION			RAISED REFLECTIVE PAVEMENT MARKER REM
FAS 1774 (OLD IL 121)			EACH
SN 054-0102 - SUGAR CREEK			
1512+06.00	TO	1518+45.00	1
SN 054-0102 SUB-TOTAL			1
TOTAL			2

		70300100	70300150
LOCATION		SHORT TERM PAVEMENT MARKING	SHORT TERM PAVEMENT MARKING REM
FAS 1774 (OLD IL 121)		FOOT	SQ FT
SN 054-0102 - SUGAR CREEK			
1512+06.00	TO	1518+45.00	64
SUB-TOTAL AFTER MILLING		64	21
AFTER SURFACE COURSE		64	21
TOTAL		128	21

		78009005				78300202	
LOCATION		LENGTH	MODIFIED URETHANE PAVEMENT MARKING LINE-5"				PAVEMENT MARKING REMOVAL - WATER BLASTING
FAS 1774 (OLD IL 121)			FOOT	FOOT	FOOT	FOOT	SQ FT
			WHITE-SOLID EDGE LINES	YELLOW SKIP-DASH	YELLOW SOLID	YELLOW DOUBLE SOLID	USE 5' WIDTH
SN 054-0102 - SUGAR CREEK							
1512+06.00	TO	1518+45.00	639	1278	160	0	0
SN 054-0102 SUB-TOTAL			1278	160	0	0	599
TOTAL				1438			599

MODEL: Schedule of Quantities (Sheet)
 FILE NAME: c:\p\work\172296-sht-schedule.dgn

USER NAME = Jonathan.Cox	DESIGNED -	REVISED -
	DRAWN -	REVISED -
	CHECKED -	REVISED -
PLOT DATE = 1/29/2026	DATE -	REVISED -

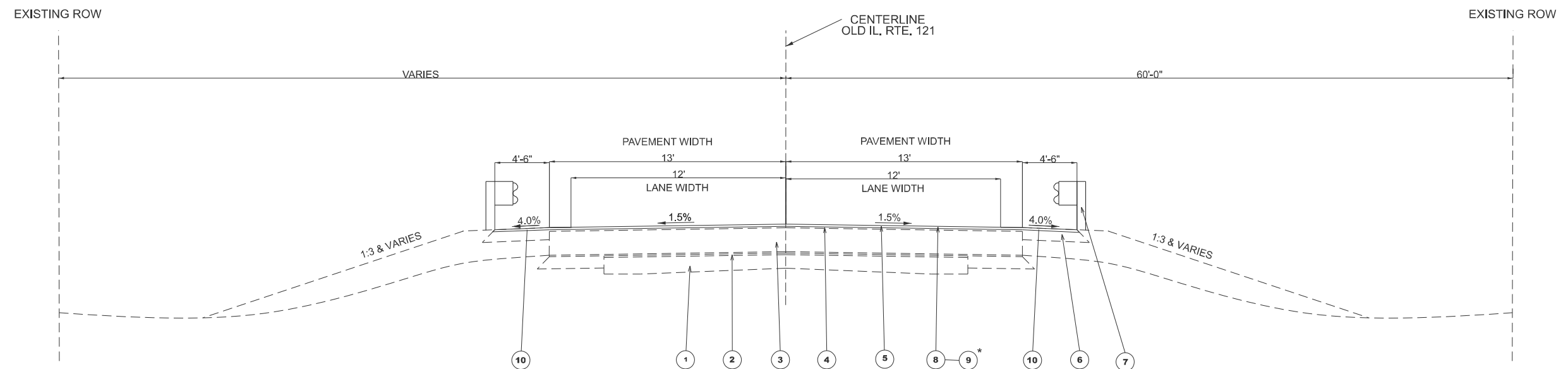
**STATE OF ILLINOIS
DEPARTMENT OF TRANSPORTATION**

SCHEDULE OF QUANTITIES			
SCALE:	SHEET 1	OF 1	SHEETS
	STA.		TO STA.

F.A.S. RTE.	SECTION	COUNTY	TOTAL SHEETS	SHEET NO.
1774	(111B-1)BDR	LOGAN	16	6
CONTRACT NO. 72296				
ILLINOIS FED. AID PROJECT				

LEGEND

1. EX. PAVEMENT
2. EX. BIT. MATERIAL (PRIME COAT)
3. EX. BINDER COURSE MIX B, TYPE 2
4. EX. LEVELING BINDER MIX C, TYPE 2
5. EX. BIT. CONCRETE SURFACE MIXC, TYPE 2
6. EX. AGG. SHOULDER, TYPE B
7. EX. GUARDRAIL
8. PROP. HMA SURFACE REMOVAL BUTT JOINT
9. PROP. HMA SURFACE COURSE IL-95 MIX "C" N50, 1-3/4"
10. PROP. AGG. WEDGE SHOULDER TYBE B



PROPOSED TYPICAL SECTION
 STA.1512+06.00 TO STA.1512+41.00
 STA.1518+10.00 TO STA.1518+45.00

BRIDGE OVERLAY
 STA.1512+71.00 TO STA. 1517+80.00

***NOTE**
 STA.1512+41.00 TO STA.1512+71.00 (HMA SURFACE COURSE ONLY ALONG APPROACH)
 STA.1517+80.00 TO STA.1518+10.00 (HMA SURFACE COURSE ONLY ALONG APPROACH)

MODEL: Typical Section (Sheet)
 FILE NAME: c:\p\work\pav\to\co\m\0988091\0672296-sht-typical.dgn

USER NAME = Jonathan.Cox	DESIGNED -	REVISED -
	DRAWN -	REVISED -
	CHECKED -	REVISED -
PLOT DATE = 1/29/2026	DATE -	REVISED -

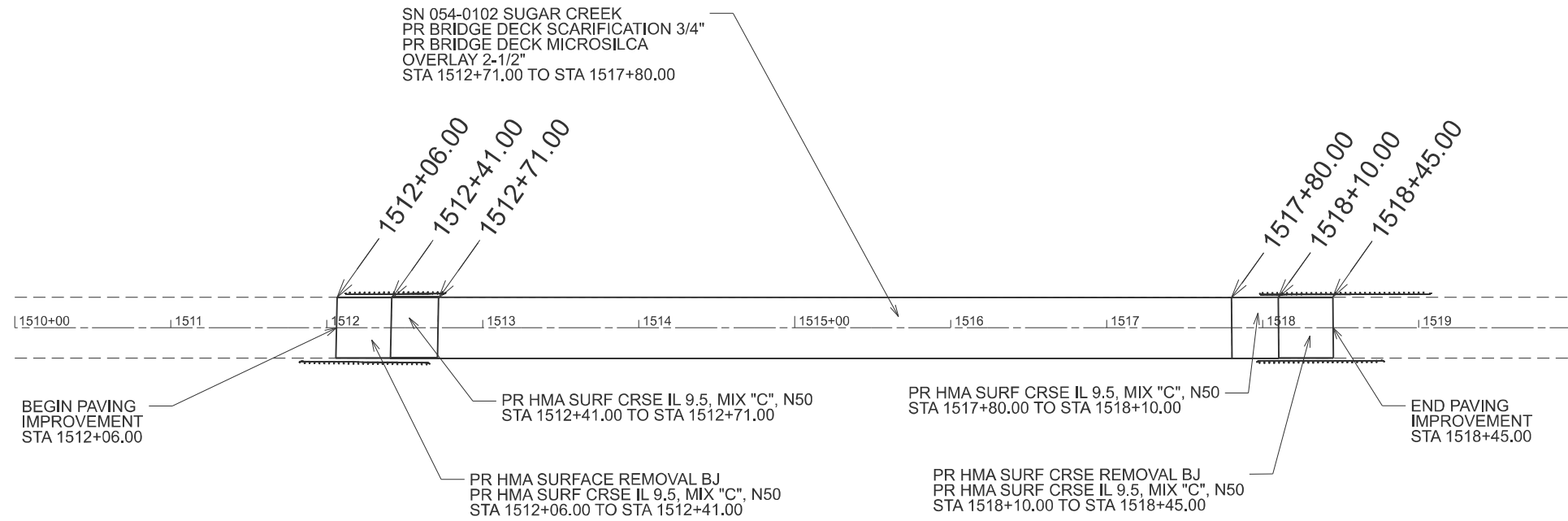
STATE OF ILLINOIS
DEPARTMENT OF TRANSPORTATION

TYPICAL SECTION

SCALE: SHEET 1 OF 1 SHEETS STA. TO STA.

F.A.S. RTE.	SECTION	COUNTY	TOTAL SHEETS	SHEET NO.
1774	(111B-1)BDR	LOGAN	16	7
CONTRACT NO. 72296				
ILLINOIS FED. AID PROJECT				

D672296 HORIZONTAL CONTROL NAD83/1997adj					
POINT#	NORTHING	EASTING	STATION	OFFSET	DESCRIPTION
51003	1298110.132	2505019.696	1473+85.819	24.30 LT	#4 Rebar W Cap
51005	1285355.060	2514231.109	1631+58.745	46.86 LT	#4 Rebar W Cap



HORIZONTAL ALIGNMENT CONTROL								
NAD83/1997 ADJ - STATE PLANE WEST ZONE								
POINT TYPE	STATION	NORTHING	EASTING	RADIUS	LENGTH	TANGENT	DELTA/THETA	ROTATION
ALIGNMENT NAME:		IL121-1						
DESCRIPTION:		IL 121 MAINLINE						
PI	1400+07.162	1304114.720	2500731.328					
PC	1555+22.025	1291459.516	2509706.671					

MODEL: IL121-1 - Plan 1 (Sheet)
 FILE NAME: c:\p\work\172296\172296-shr-plan.dgn

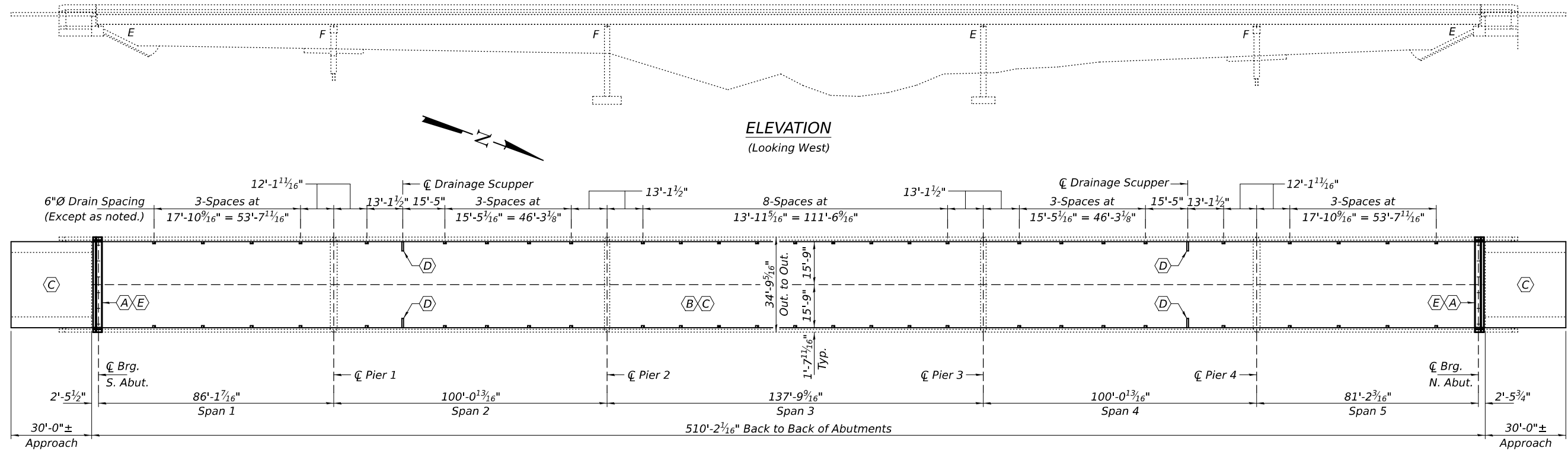
USER NAME = Jonathan.Cox	DESIGNED -	REVISED -
	DRAWN -	REVISED -
	CHECKED -	REVISED -
PLOT DATE = 1/22/2026	DATE -	REVISED -

STATE OF ILLINOIS
DEPARTMENT OF TRANSPORTATION

SN 054-0102 PLAN SHEET

SCALE: 1"=50' SHEET 1 OF 1 SHEETS STA. 1510+00.00 TO STA. 1520+00.00

F.A.S RTE.	SECTION	COUNTY	TOTAL SHEETS	SHEET NO.
1774	(111B-1)BDR	LOGAN	16	8
CONTRACT NO. 72296				
ILLINOIS FED. AID PROJECT				



ELEVATION
(Looking West)

PLAN

SCOPE OF WORK

- (A) - Existing Exp. Joint to be Removed & Replaced. (Full Depth)
- (B) - Bridge Deck Scarification & Microsilica Concrete Overlay.
- (C) - Bridge Deck & Approach Slab Patching.
- (D) - Drainage Scupper to be Adjusted. (4 Locations)
- (E) - Blast and Paint Beam Ends (up to 10'-0"), End Diaphragms and Abutment Bearings.

GENERAL NOTES

All dimensions converted from metric to the nearest 1/16".
 Plan dimensions and details relative to the existing structure have been taken from existing plans and are subject to nominal construction variations. The Contractor shall field verify existing dimensions and details affecting new construction and make necessary approved adjustments prior to construction or ordering of materials. Such variations shall not be cause for additional compensation for a change in scope of the work, however, the Contractor will be paid for the quantity actually furnished at the unit price bid for the work.
 Cleaning and painting of the existing structural steel shall be specified in the special provision for "Cleaning and Painting Existing Steel Structures". All beams within 10 foot of the beam ends shall be cleaned per Near White Blast Cleaning (SSPC-SP10).
 The designated areas cleaned per Near White Blast Cleaning (SSPC-SP10) shall be painted according to the requirements of Paint System 1 (OZ/E/U). The color of the final finish coat for all interior steel surfaces shall be Gray, Munsell No. 5B 7/1. The color of the final finish coat for the exterior and bottom flange of the fascia beams shall be Interstate Green, Munsell No. 7.5G 4/8.
 SSPC-QP1 Painting Contractor Certifications will be required for this contract. A minimum of one (1) air monitor is required for this project.

Reinforcement bars designated (E) shall be epoxy coated.
 Existing reinforcement bars extending into the removal area shall be cleaned, straightened and incorporated into the new construction. Any reinforcement bars that are damaged during concrete removal shall be replaced with an approved bar splicer or anchorage system at the Contractor's expense.
 Prior to pouring the new concrete deck, all heavy or loose rust, loose mill scale, and other loose detrimental foreign material shall be removed from the surfaces in contact with concrete (SSPC-SP3 standards). Tightly adhered paint may remain unless otherwise noted. Removal shall be accomplished by methods that will not damage the steel and the cost will be included in the pay item covering removal of the existing concrete.
 Joint openings shall be adjusted according to Article 520.04 of the Std. Specs. when the deck is poured at an ambient temperature other than 50° F.
 The Engineer shall show actual locations and size of deck repairs on As-built Plans. Areas of deck repairs shown are estimated.
 Work to be completed under road closure.

TOTAL BILL OF MATERIAL

ITEM	UNIT	QUANTITY
Concrete Removal	Cu. Yd.	9.1
Concrete Superstructure	Cu. Yd.	10.1
Reinforcement Bars, Epoxy Coated	Pound	1320
Preformed Joint Strip Seal	Foot	67
Bridge Deck Scarification, 3/4"	Sq. Yd.	1760
Bridge Deck Microsilica Concrete Overlay, 2 1/2"	Sq. Yd.	1760
Bridge Deck Grooving	Sq. Yd.	1668
Drainage Scupper to be Adjusted	Each	4
Clean and Painting Structural Steel, Location 1	L. Sum	1
Joint Sealing (Patches)	Foot	231
Approach Slab Repair (Partial Depth)	Sq. Yd.	28.6
* Protective Coat	Sq. Yd.	1785
** Deck Slab Repair (Full Depth, Type II)	Sq. Yd.	10

* Applied on new concrete only (top and front face of parapet).
 ** Quantity is estimated. Location and size of patches to be determined in the field by the Engineer.

MODEL: 72296-009
 FILE NAME: p:\dot-pw-bentley.com\FWIDOT\Documents\DOT_O_ces\Bureau of Bridges and Structures\OBM Projects\0540102\CADDData\Structures\0540102.dgn



Expires: November 30, 2026

DESIGNED -	Chi-Cheung Chau
CHECKED -	Chris A. Loeh
DRAWN -	STEFFEN
CHECKED -	CCC CAL

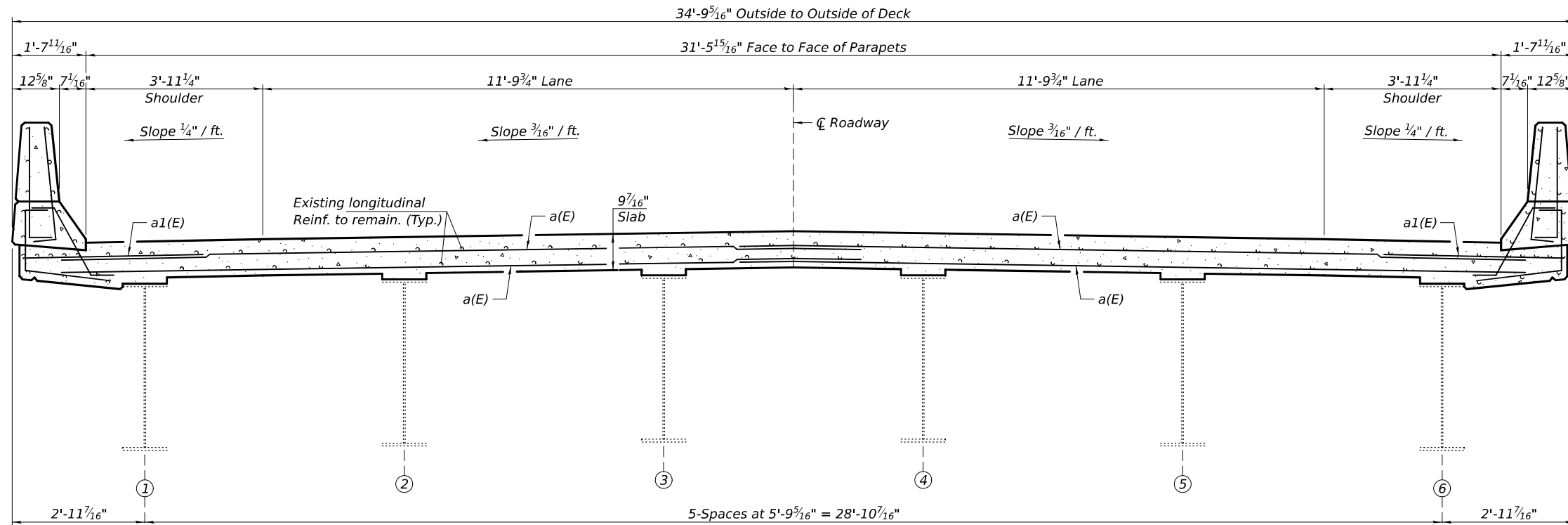
EXAMINED		DATE -	MARCH 17, 2026
PASSED	Justin W. Mann	REVISED -	
	ACTING ENGINEER OF BRIDGES AND STRUCTURES	REVISED -	

STATE OF ILLINOIS
DEPARTMENT OF TRANSPORTATION

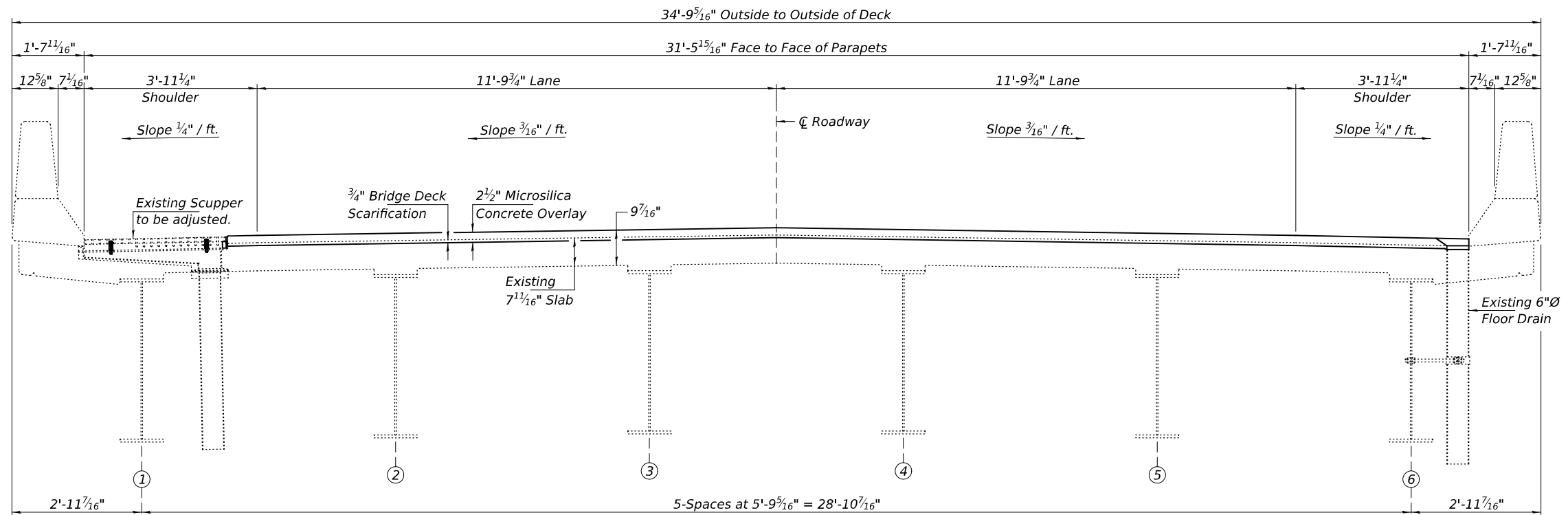
GENERAL PLAN AND ELEVATION
OLD ILLINOIS 121 OVER SUGAR CREEK
SN 054-0102

SHEET 1 OF 8 SHEETS

F.A.S. RTE.	SECTION	COUNTY	TOTAL SHEETS	SHEET NO.
1774	(111B-1)BDR	LOGAN	16	9
CONTRACT NO. 72296				
ILLINOIS FED. AID PROJECT				



CROSS-SECTION AT ABUTMENT JOINTS
(Looking South)



AT DRAINAGE SCUPPERS

AT 6"Ø FLOOR DRAINS

CROSS-SECTION AT MID-SPAN
(Looking South)

Notes:
For Bridge Parapet Details, see sheet 3 of 8.
For Overlay Treatment at 6"Ø Floor Drains, see sheet 4 of 8.
For Drainage Scupper Adjusting Details, see sheet 6 of 8.

MODEL: 72296-010
FILE NAME: p:\dot-pw-bentley.com\FWIDOT\Documents\OBM Projects\0540102\CADDData\Structures\0540102.dgn
3/17/2026 11:03:51 AM

DESIGNED -	CCC
CHECKED -	CAL
DRAWN -	STEFFEN
CHECKED -	CCC CAL

EXAMINED	 ENGINEER OF STRUCTURAL SERVICES ACTING ENGINEER OF BRIDGES AND STRUCTURES	DATE -	MARCH 17, 2026
PASSED		REVISED -	

DATE -	MARCH 17, 2026
REVISED -	
REVISED -	

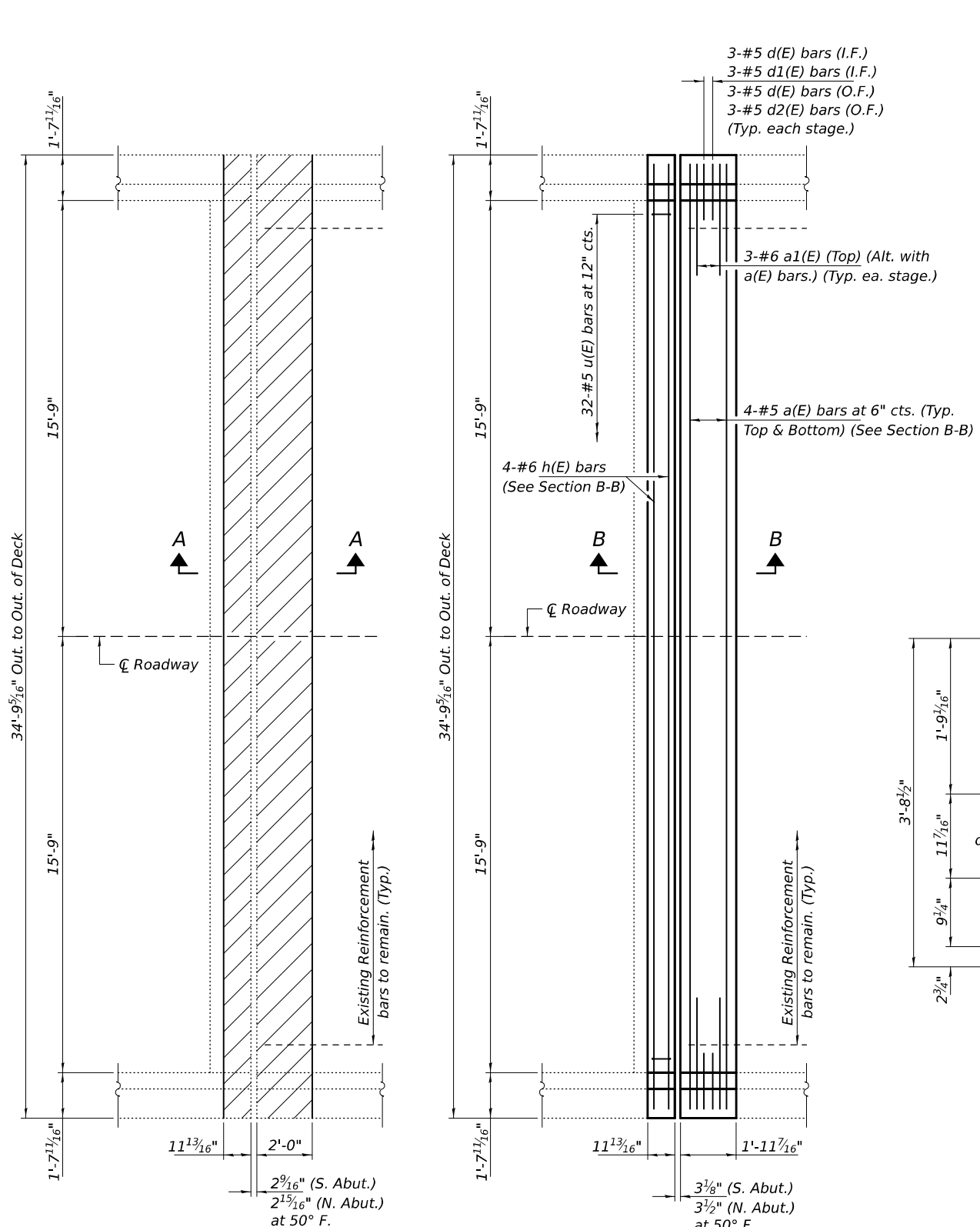
STATE OF ILLINOIS
DEPARTMENT OF TRANSPORTATION

STAGING DETAILS
SN 054-0102

SHEET 2 OF 8 SHEETS

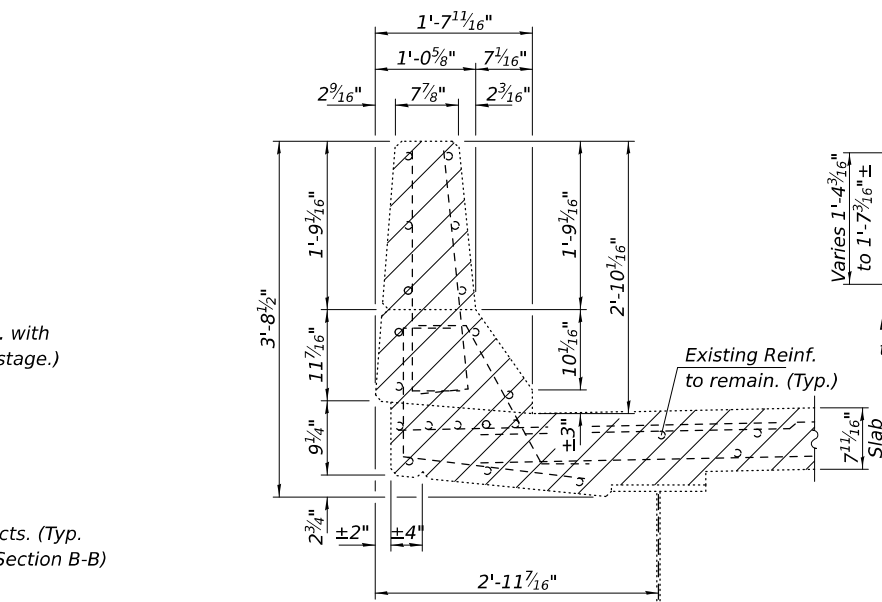
F.A.S. RTE.	SECTION	COUNTY	TOTAL SHEETS	SHEET NO.
1774	(111B-1)BDR	LOGAN	16	10
CONTRACT NO. 72296				
ILLINOIS FED. AID PROJECT				

MODEL: 72296-011
 FILE NAME: p:\dot-pw-bentley.com\FWIDOT\Documents\OBM Projects\0540102\CADData\Structures\0540102.dgn
 3/17/2026 11:03:52 AM

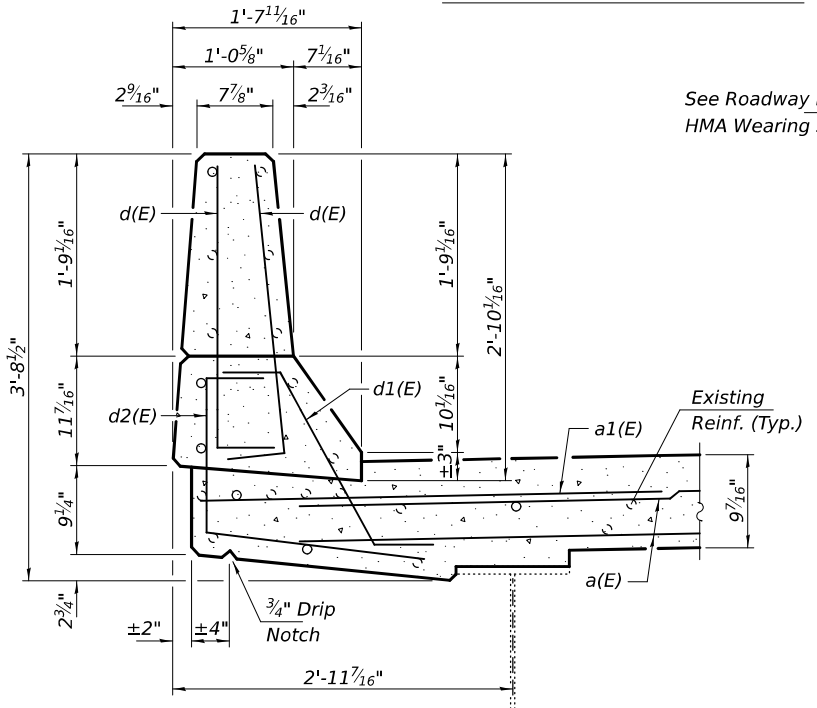


CONCRETE REMOVAL PLAN
 (South Abutment shown, North Abutment similar by rotation.)

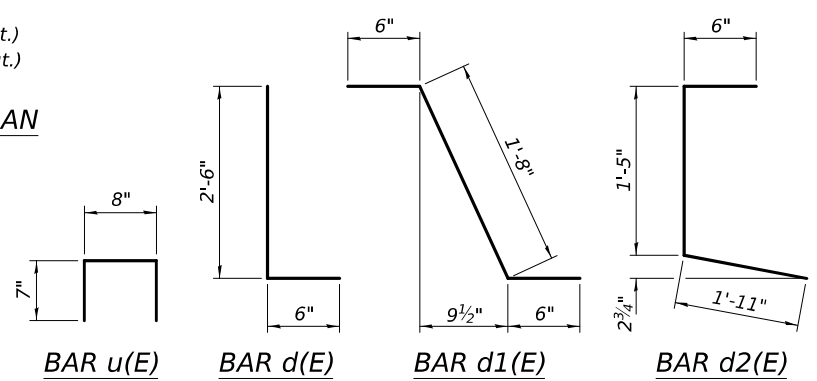
CONCRETE REPLACEMENT PLAN
 (South Abutment shown, North Abutment similar by rotation.)



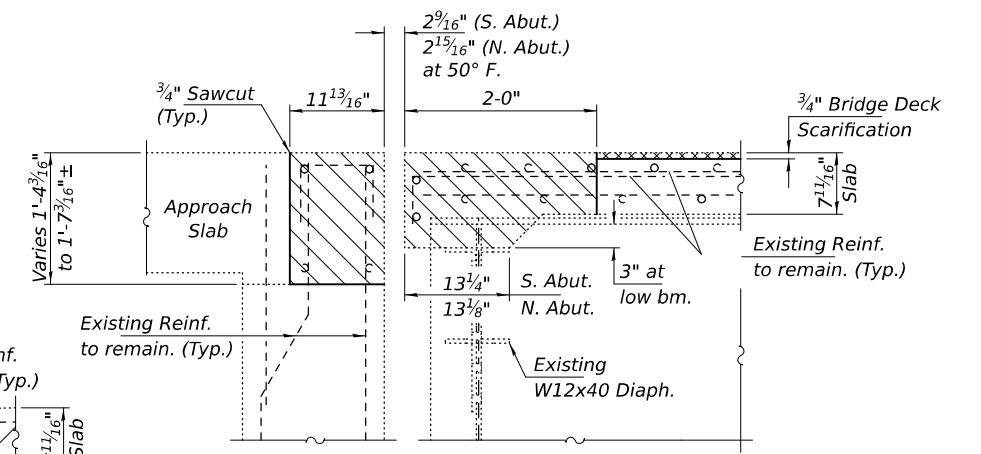
BRIDGE PARAPET REMOVAL



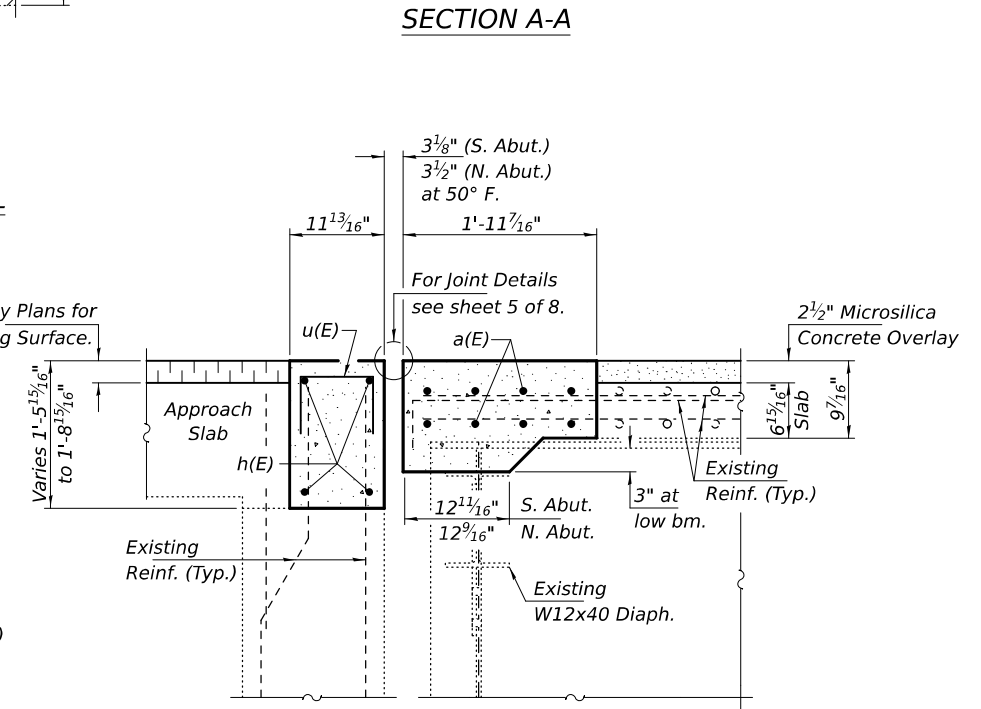
BRIDGE PARAPET DETAILS



Notes:
 Hatched areas indicate Concrete Removal.
 Cross Hatched areas indicate Bridge Deck Scarification.
 For Approach Parapet Details, see sheet 4 of 8.



SECTION A-A



SECTION B-B

BILL OF MATERIAL

Bar	No.	Size	Length	Shape
a(E)	16	#5	33'-9"	—
a1(E)	12	#6	4'-0"	—
d(E)	24	#5	3'-0"	L
d1(E)	12	#5	2'-8"	┘
d2(E)	12	#5	3'-10"	└
h(E)	8	#6	33'-9"	—
u(E)	64	#5	1'-10"	□
Concrete Removal			Cu. Yd.	9.1
Concrete Superstructure			Cu. Yd.	10.1
Reinforcement Bars, Epoxy Coated			Pound	1320

DESIGNED - CCC	EXAMINED -
CHECKED - CAL	ENGINEER OF STRUCTURAL SERVICES
DRAWN - STEFFEN	PASSED - <i>Quater W. Mann</i>
CHECKED - CCC CAL	ACTING ENGINEER OF BRIDGES AND STRUCTURES

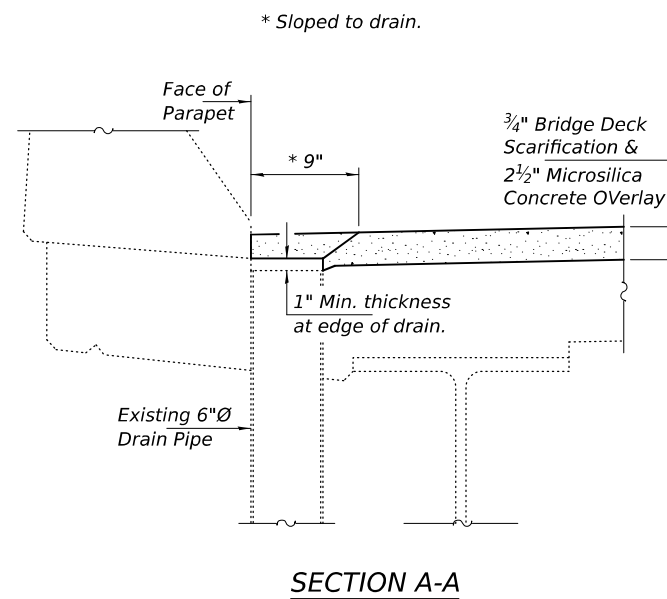
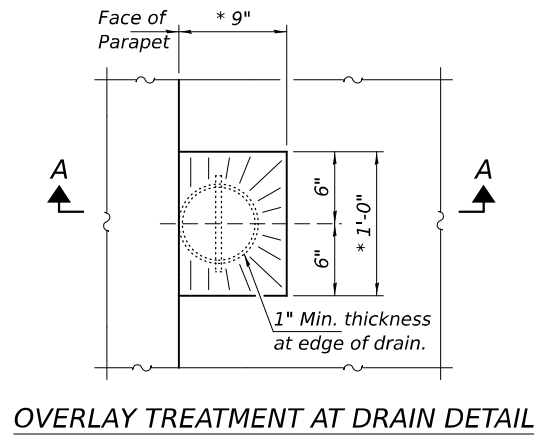
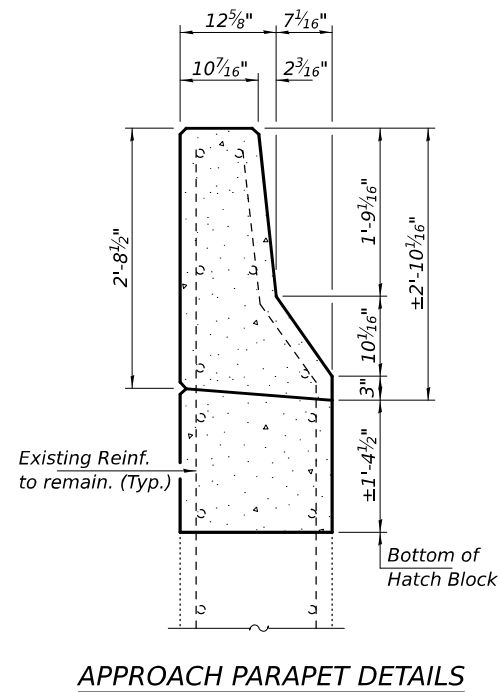
DATE - MARCH 17, 2026
REVISED -
REVISED -

STATE OF ILLINOIS
 DEPARTMENT OF TRANSPORTATION

JOINT REMOVAL & REPLACEMENT DETAILS
 SN 054-0102
 SHEET 3 OF 8 SHEETS

F.A.S. RTE. 1774	SECTION (111B-1)BDR	COUNTY LOGAN	TOTAL SHEETS 16	SHEET NO. 11
CONTRACT NO. 72296			ILLINOIS FED. AID PROJECT	

MODEL: 72296-012
 FILE NAME: p:\dot-pw-bentley.com\FWIDOT\Documents\DOT_0_ces\Bureau of Bridges and Structures\OBM Projects\0540102\CADDData\Structures\0540102.dgn
 3/17/2026 11:03:53 AM



DESIGNED - CCC	EXAMINED
CHECKED - CAL	ENGINEER OF STRUCTURAL SERVICES
DRAWN - STEFFEN	PASSED
CHECKED - CCC CAL	ACTING ENGINEER OF BRIDGES AND STRUCTURES

DATE - MARCH 17, 2026

REVISIONS:

REVISIONS -
REVISIONS -

DATE - MARCH 17, 2026

REVISIONS:

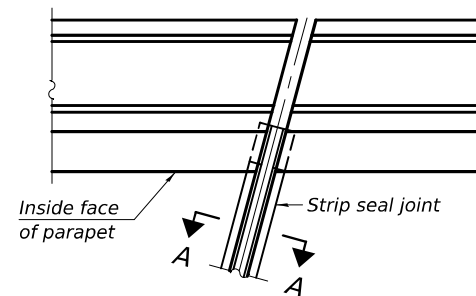
REVISIONS -
REVISIONS -

STATE OF ILLINOIS
 DEPARTMENT OF TRANSPORTATION

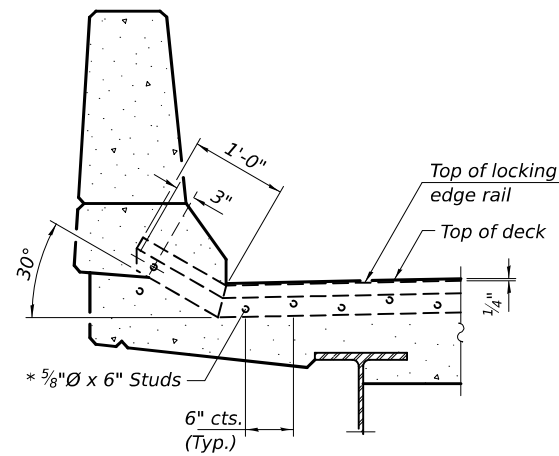
REPAIR DETAILS
 SN 054-0102

SHEET 4 OF 8 SHEETS

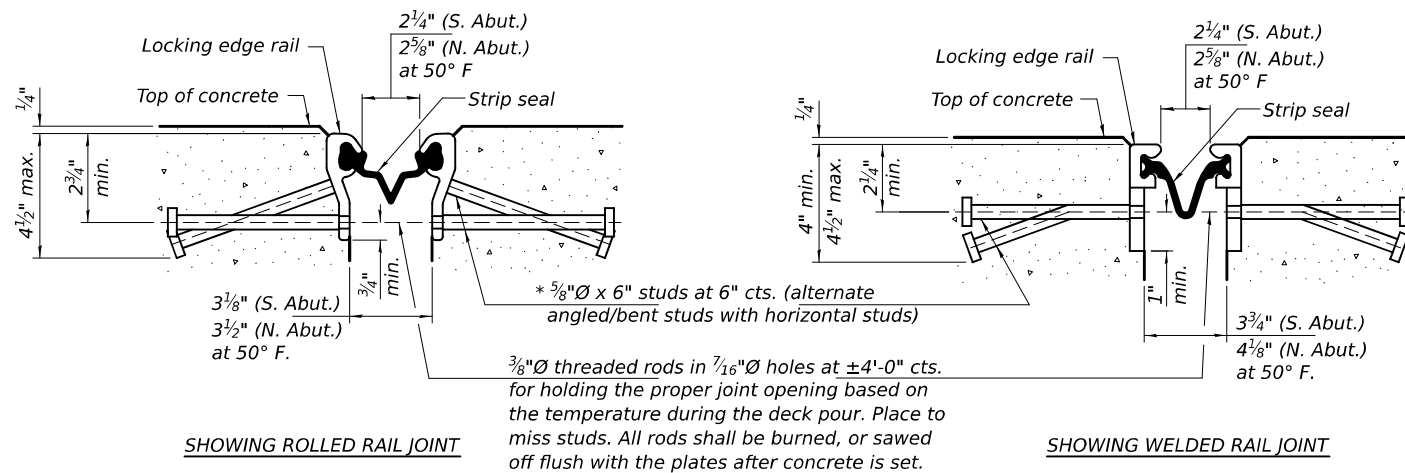
F.A.S. RTE.	SECTION	COUNTY	TOTAL SHEETS	SHEET NO.
1774	(111B-1)BDR	LOGAN	16	12
CONTRACT NO. 72296				
ILLINOIS FED. AID PROJECT				



FOR SKEWS $\leq 30^\circ$
PLAN AT PARAPET



SECTION THRU PARAPET

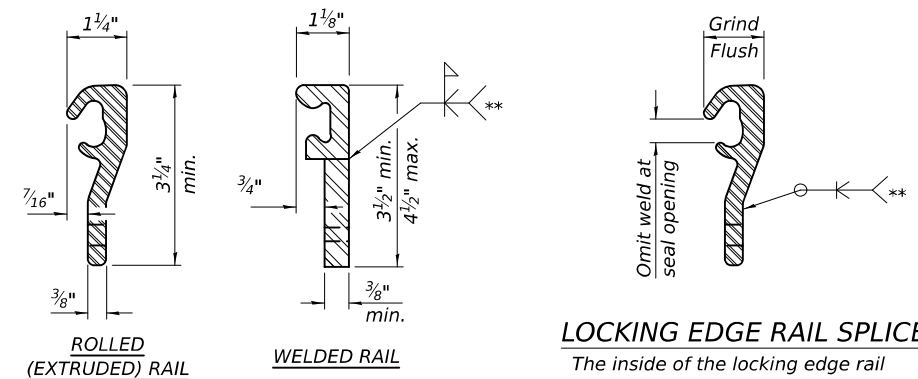


SHOWING ROLLED RAIL JOINT

SHOWING WELDED RAIL JOINT

SECTION A-A

* Granular or solid flux filled headed studs conforming to Article 1006.32 of the Std. Specs., automatically end welded.



ROLLED (EXTRUDED) RAIL

WELDED RAIL

LOCKING EDGE RAIL SPLICE

The inside of the locking edge rail groove shall be free of weld residue. Rolled rail shown, welded rail similar.

LOCKING EDGE RAILS

** Back gouge not required if complete joint penetration is verified by mock-up.

BILL OF MATERIAL

Item	Unit	Total
Preformed Joint Strip Seal	Foot	67

Notes:

The strip seal shall be made continuous and shall have a minimum thickness of 1/4". The configuration of the strip seal shall match the configuration of the locking edge rails. Open or "webbed" strip seal gland configurations are not permitted. The gland shall be sized for a maximum rated movement of 4 inches.

The locking edge rails depicted are configured for typical applications and are conceptual only. The actual configuration of the locking edge rails and matching strip seal may vary from manufacturer to manufacturer provided they fit the application and meet the minimum anchorage shown. Flanged edge rails, however, will not be allowed. Locking edge rails may exceed the 4 1/2" maximum depth provided the anchorage system is revised according to the manufacturer's recommendation.

The manufacturer's recommended installation methods shall be followed.

All steel components shall be galvanized after fabrication according to Article 520.03 of the Standard Specifications.

The Maximum space between locking edge rail segments shall be 3/16" and sealed with a suitable sealant; however, any rail joint within 10' measured perpendicular to the face of the curb or parapet shall be welded as shown in the locking edge rail splice detail.

The concrete opening below the strip seal will vary based on the locking edge rail chosen by the Contractor. Deck and parapet lengths shown elsewhere in the plans are dimensioned to the concrete opening, not the joint opening, and are based on the rolled locking edge rail. If the Contractor elects to use a different locking edge rail, dimensional adjustments may be required. One exception to this would be the strip seal joint at the end of the precast bridge approach slab. For these cases the pavement connector length shall be adjusted, not the length of the bridge approach slab.

DESIGNED - CCC	EXAMINED
CHECKED - CAL	PASSED
DRAWN - STEFFEN	
CHECKED - CCC CAL	

DATE - MARCH 17, 2026
 ENGINEER OF STRUCTURAL SERVICES
 QUATE W. MANN
 ACTING ENGINEER OF BRIDGES AND STRUCTURES

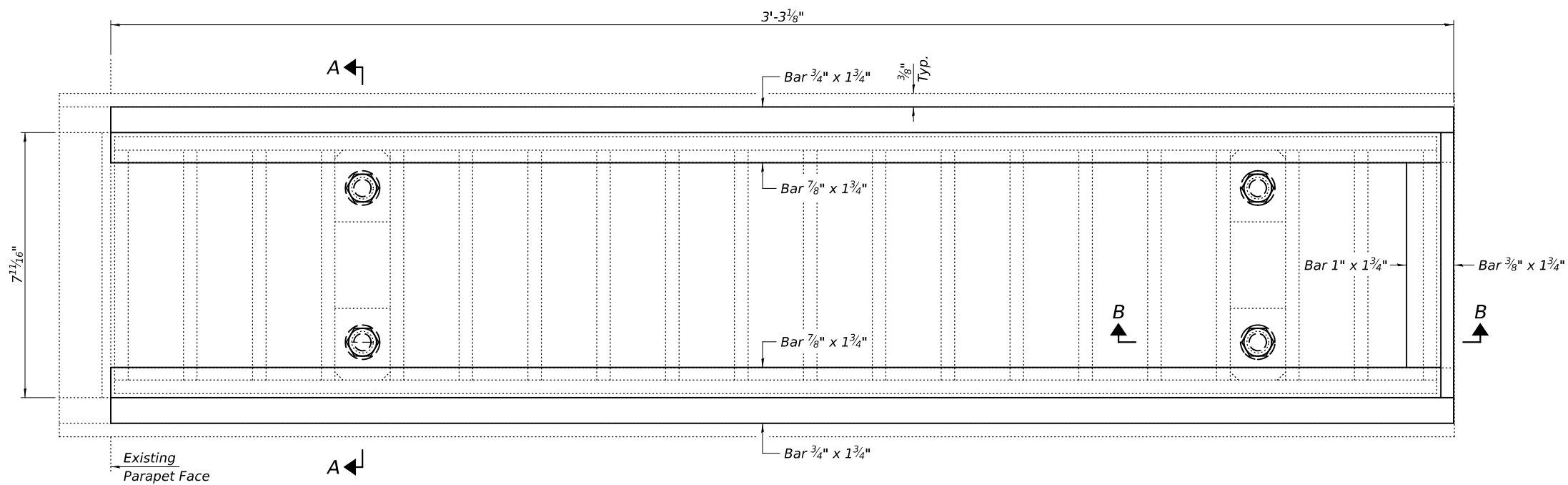
REVISD -
REVISD -

STATE OF ILLINOIS
 DEPARTMENT OF TRANSPORTATION

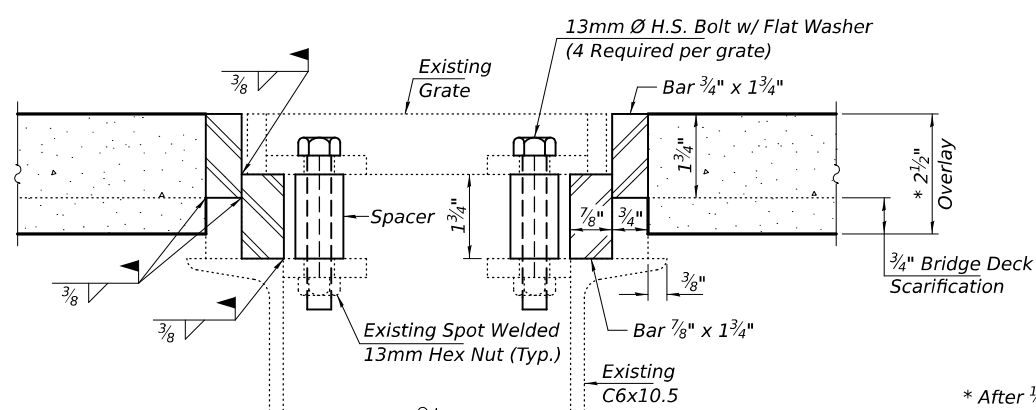
PREFORMED JOINT STRIP SEAL DETAILS
 SN 054-0102

SHEET 5 OF 8 SHEETS

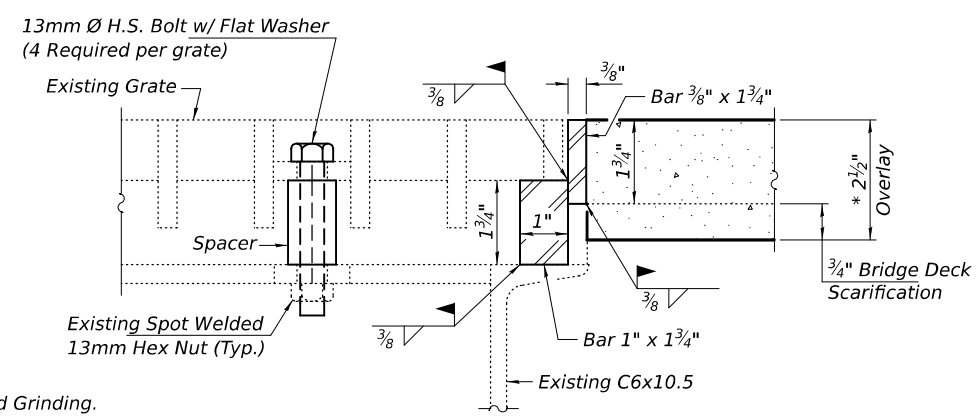
F.A.S. RTE.	SECTION	COUNTY	TOTAL SHEETS	SHEET NO.
1774	(111B-1)BDR	LOGAN	16	13
CONTRACT NO. 72296				
ILLINOIS FED. AID PROJECT				



SCUPPER ADJUSTMENT PLAN



SECTION A-A



SECTION B-B

* After 1/4" Diamond Grinding.

NOTES

The Adjusting Scupper Ring shall be galvanized
 The Contractor shall ensure that no damage is done to existing to be reused.
 Shop plans for proposed adjusting scupper ring shall be submitted for approval prior to fabrication.
 Cost of all labor and materials necessary to removed existing grates, clean existing scuppers, install adjusting scupper rings and reinstalling grates is included in the cost per unit each for Drainage Scupper to be Adjusted.

BILL OF MATERIAL

Item	Unit	Total
Drainage Scupper to be Adjusted	Each	4

MODEL: 72296-014
 FILE NAME: p:\dot-pw-bentley.com\FWIDOT\Documents\DOT_O_ces\Bureau of Bridges and Structures\OBM Projects\0540102\CADData\Structures\0540102.dgn
 3/17/2026 11:03:56 AM

DESIGNED - CCC	EXAMINED
CHECKED - CAL	ENGINEER OF STRUCTURAL SERVICES
DRAWN - STEFFEN	PASSED
CHECKED - CCC CAL	ACTING ENGINEER OF BRIDGES AND STRUCTURES

DATE - MARCH 17, 2026
 REVISIONS:
 REVISION -
 REVISION -

STATE OF ILLINOIS
 DEPARTMENT OF TRANSPORTATION

DRAINAGE SCUPPER ADJUSTMENT DETAILS
 SN 054-0102

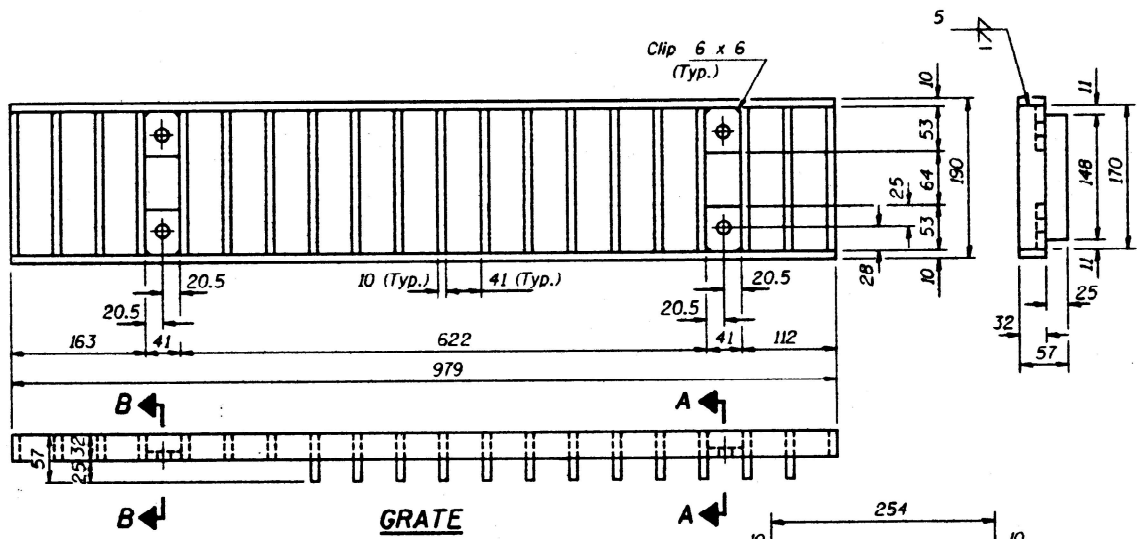
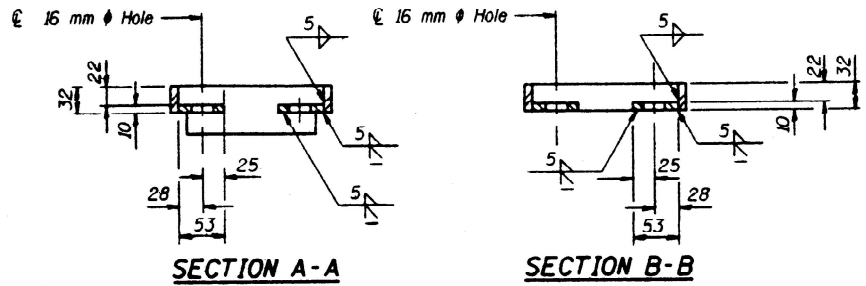
SHEET 6 OF 8 SHEETS

F.A.S. RTE.	SECTION	COUNTY	TOTAL SHEETS	SHEET NO.
1774	(111B-1)BDR	LOGAN	16	14
CONTRACT NO. 72296				
ILLINOIS FED. AID PROJECT				

STATE OF ILLINOIS
DEPARTMENT OF TRANSPORTATION

PROJECT NO.	SECTION	COUNTY	SHEET NO.	TOTAL SHEETS
1774	111B-1	Logan	42	18

SHEET NO. 9
23 SHEETS



Notes:

Hollow structural steel tubing shall conform to the requirements of ASTM designation A500 Grade B, or A501 Structural Steel Tubing.

All other shapes, plates and bars shall conform to the requirements of AASHTO M270 - Grade 250.

Bolts, studs, washers and nuts shall conform to the requirements of ASTM A307.

The Grate, Frame and Downspout shall be galvanized after shop fabrication in accordance with AASHTO M111 & ASTM A385.

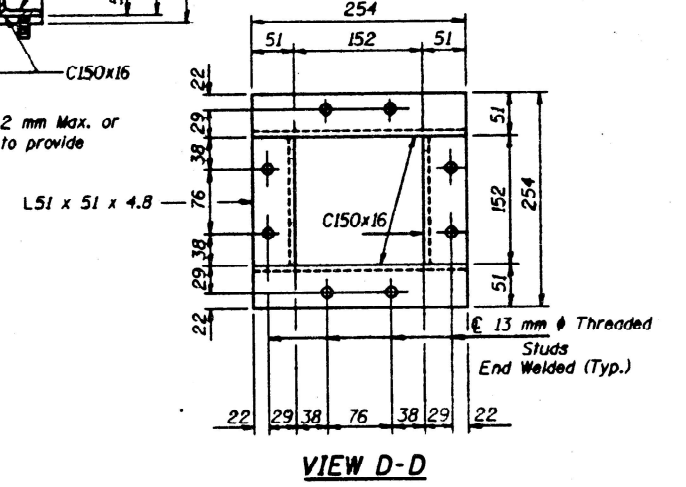
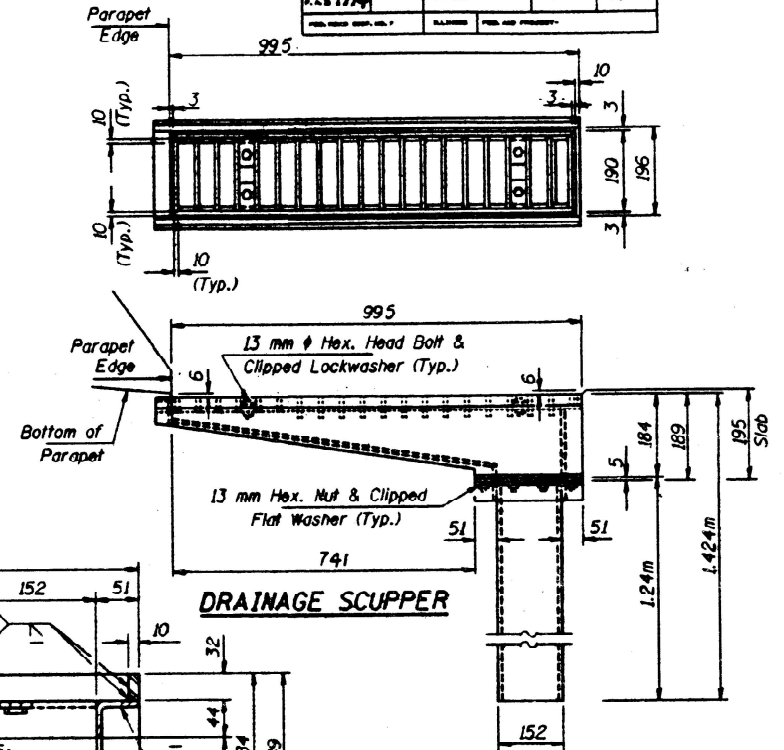
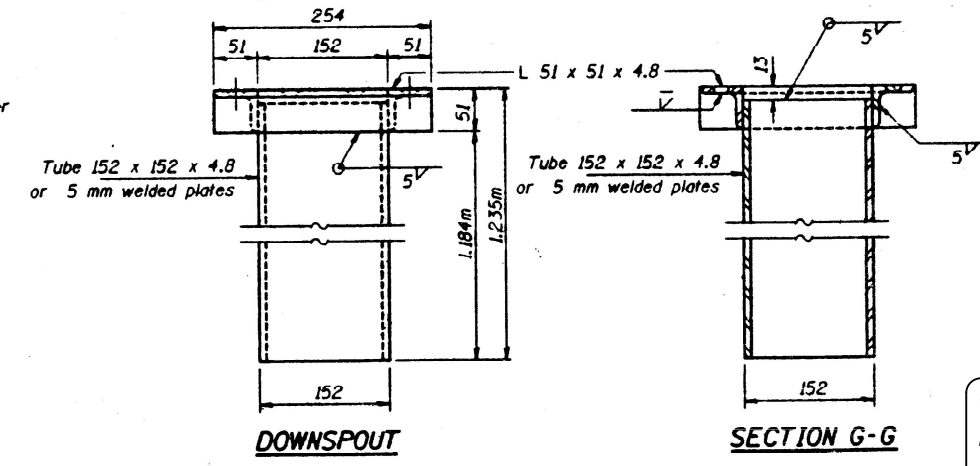
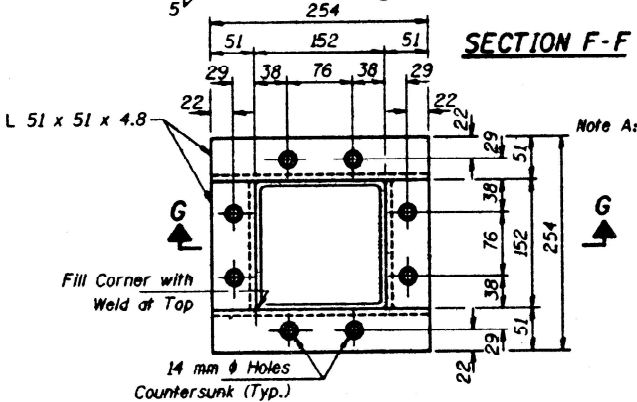
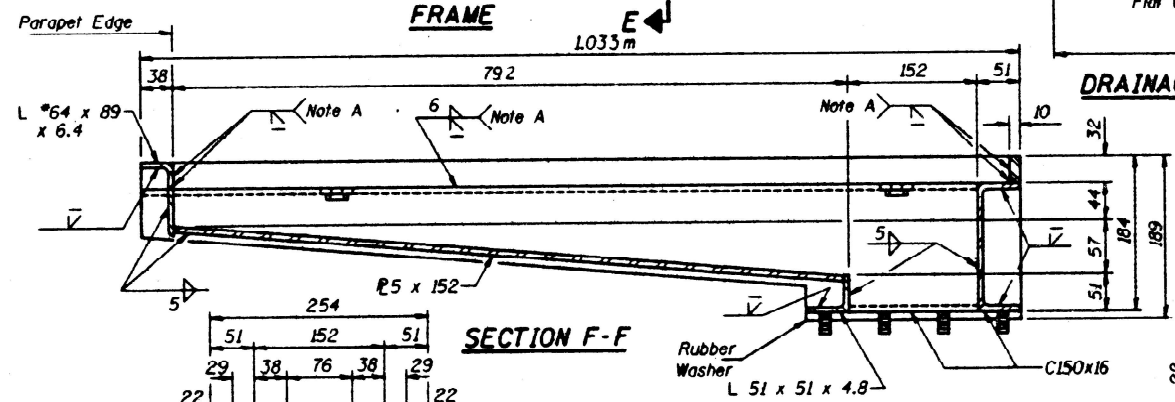
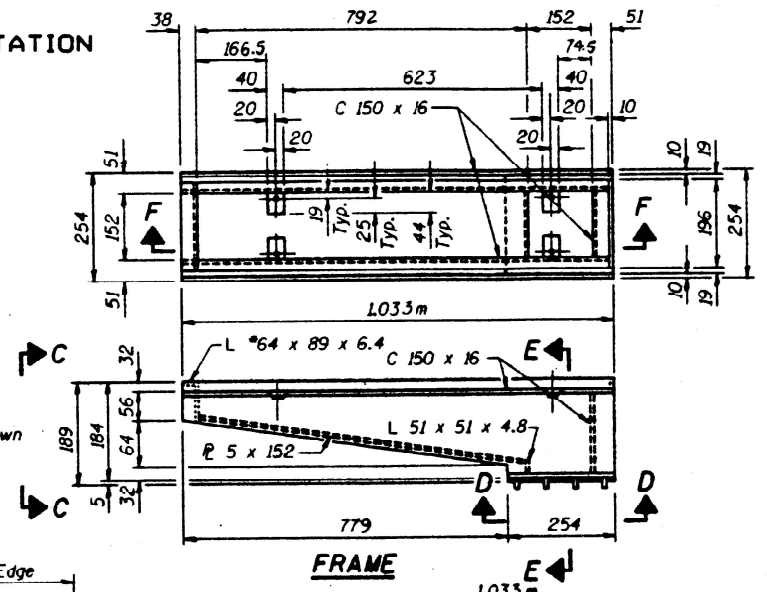
All bolts, washers and nuts shall be galvanized in accordance with AASHTO M232.

Cost of the Grate, Frame, Downspout, Bolts, Washers and Nuts including complete installation of Scupper will be paid for at the unit bid price each for "DRAINAGE SCUPPERS."

All dimensions are in millimeters (mm) except as noted.

DESIGNED	W.J.V.
CHECKED	J.P.S.
DRAWN	C.D.C.
CHECKED	W.J.V.

DS-3(M) 4-30-97



BILL OF MATERIAL

ITEM	UNIT	QUANTITY
Drainage Scuppers	Each	4

STEEL DRAINAGE SCUPPER
OLD IL 121 OVER SUGAR CREEK
S.B.I. 121 SECTION 111B-1
LOGAN COUNTY
STATION 41 + 714.25
STRUCTURE NO. 054-0102

FOR INFORMATION ONLY

MODEL: 72296-014A
FILE NAME: p:\dot-pw\benley.com\FWIDOT\Documents\IDOT - ces\Bureau of Bridges and Structures\OBM Projects\0540102\CADData\Structures\0540102.dgn
3/17/2026 11:03:57 AM

DESIGNED	CCC
CHECKED	CAL
DRAWN	STEFFEN
CHECKED	CCC CAL

EXAMINED
PASSED
ENGINEER OF STRUCTURAL SERVICES
ACTING ENGINEER OF BRIDGES AND STRUCTURES

DATE	MARCH 17, 2026
REVISED	
REVISED	

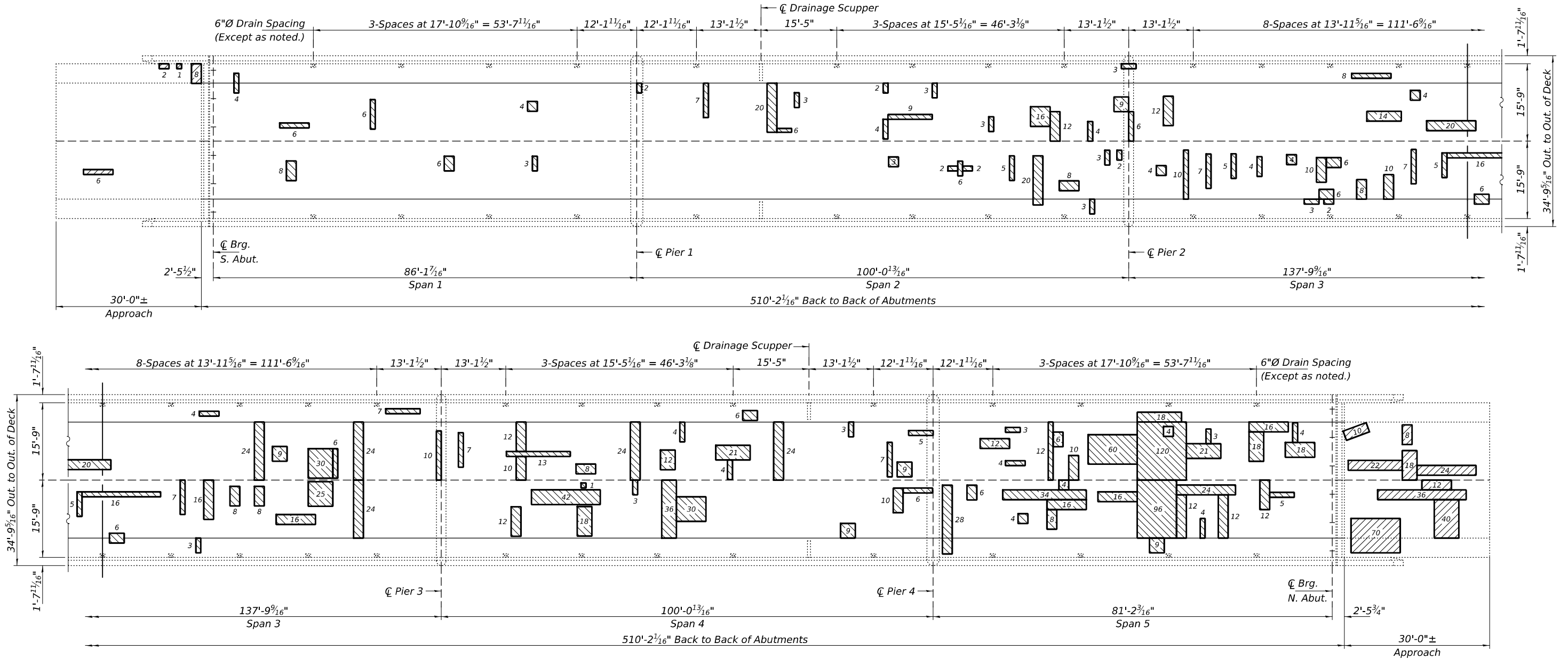
STATE OF ILLINOIS
DEPARTMENT OF TRANSPORTATION

EXISTING SCUPPER DETAILS - FOR INFORMATION ONLY
SN 054-0102

SHEET 7 OF 8 SHEETS

F.A.S. RTE.	SECTION	COUNTY	TOTAL SHEETS	SHEET NO.
1774	(111B-1)BDR	LOGAN	16	14A

CONTRACT NO. 72296
ILLINOIS FED. AID PROJECT



PATCHING PLAN

All numbers above are in Sq. Ft.

-  - Deck Slab Repair (Full Depth, Type II)
-  - Approach Slab Repair (Partial Depth) (Estimated 257 Sq. Ft.)
-  - Deck Slab Repair (Partial - For Information Only.) (Estimated 1679 Sq. Ft.)

Notes:
 Areas of deck & approach repairs shown are estimated.
 The Engineer shall show actual locations and size of deck & approach repairs on As-built Plans.
 Joint Sealing (Patches) shall be applied on the approach slabs only.

BILL OF MATERIAL

ITEM	UNIT	QUANTITY
* Deck Slab Repair (Full Depth, Type II)	Sq. Yd.	10
Joint Sealing (Patches)	Foot	231
Approach Slab Repair (Partial Depth)	Sq. Yd.	28.6

* Quantity is estimated. Location and size of patches to be determined in the field by the Engineer.

MODEL: 72296-014B
 FILE NAME: p:\dot-pw\dot\Documents\OBM Projects\0540102\CADData\Structures\0540102.dgn
 3/17/2026 11:04:06 AM

DESIGNED - CCC	EXAMINED
CHECKED - CAL	PASSED
DRAWN - STEFFEN	
CHECKED - CCC CAL	

DATE - MARCH 17, 2026

ENGINEER OF STRUCTURAL SERVICES
Quater W. Mann
 ACTING ENGINEER OF BRIDGES AND STRUCTURES

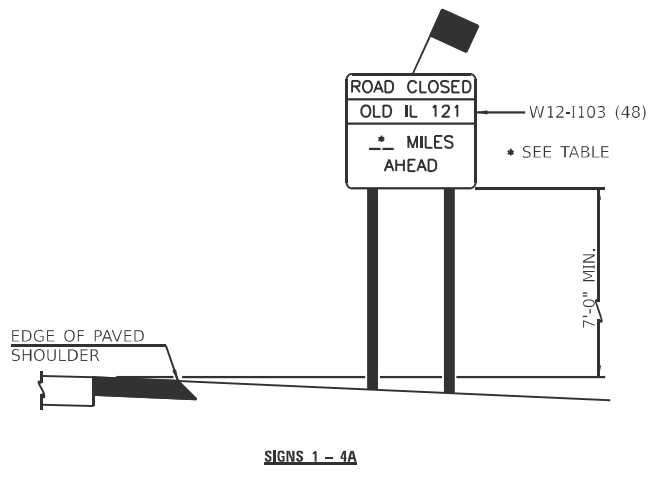
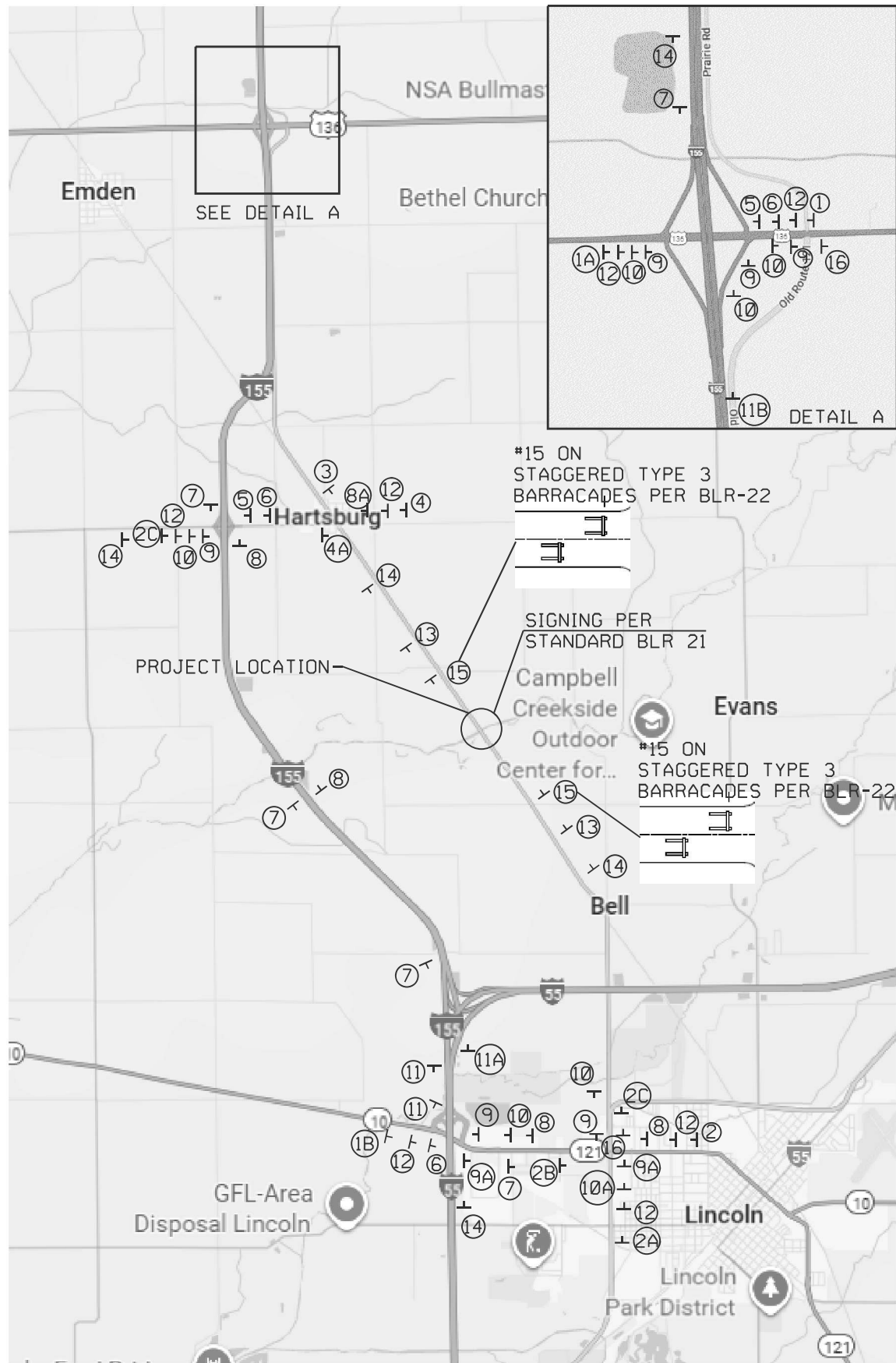
REVISED -
 REVISED -

**STATE OF ILLINOIS
 DEPARTMENT OF TRANSPORTATION**

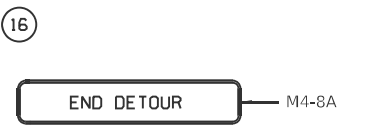
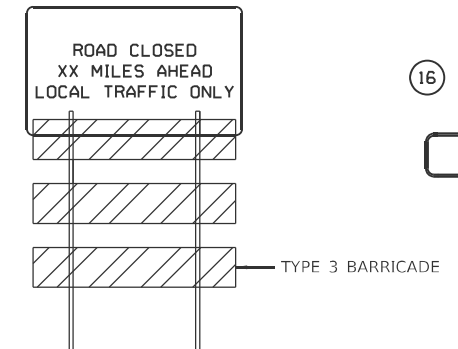
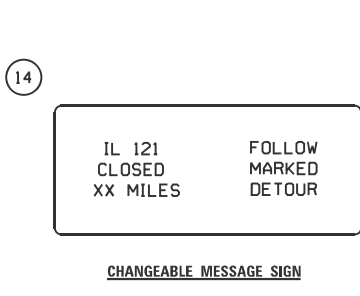
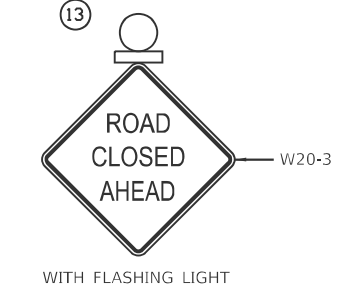
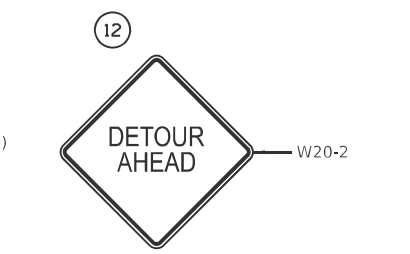
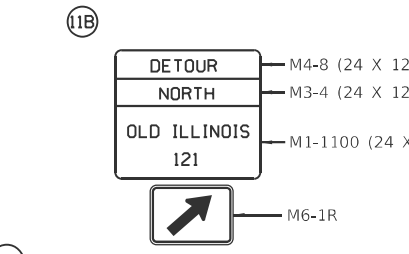
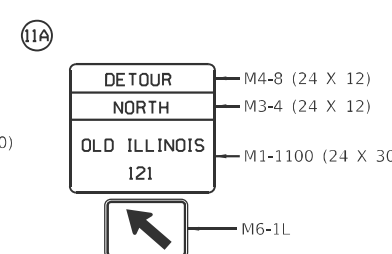
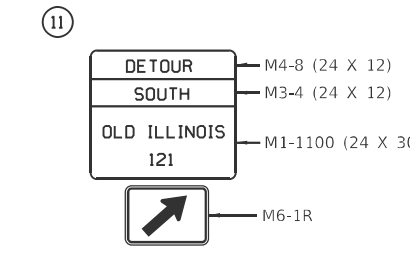
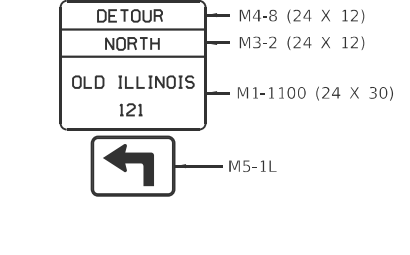
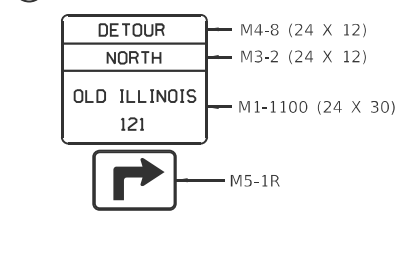
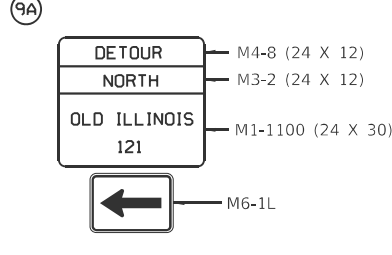
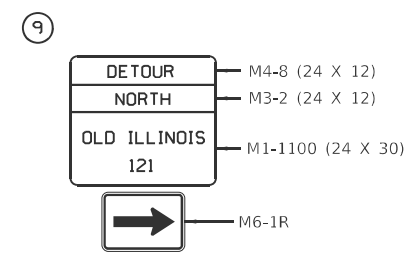
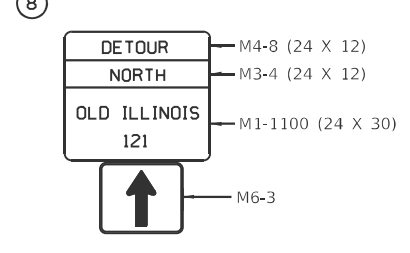
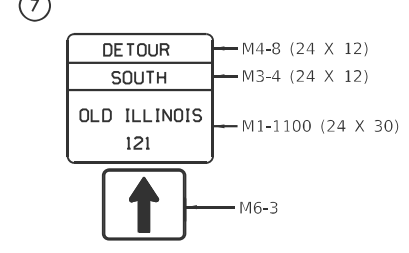
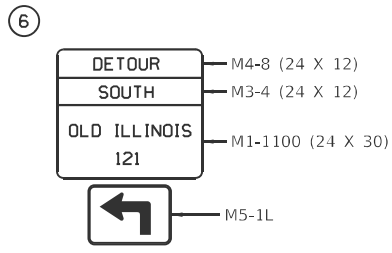
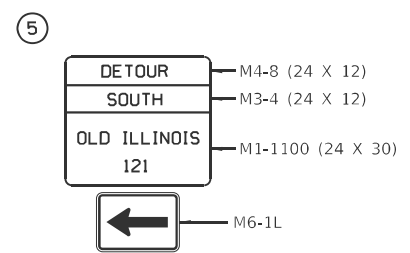
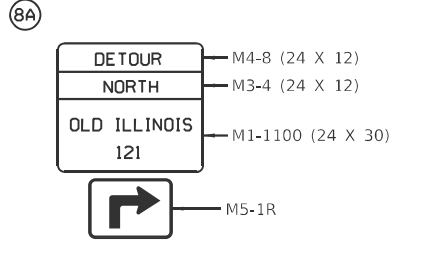
BRIDGE DECK AND APPROACH PATCHING DETAILS
 SN 054-0102

SHEET 8 OF 8 SHEETS

F.A.S. RTE.	SECTION	COUNTY	TOTAL SHEETS	SHEET NO.
1774	(111B-1)BDR	LOGAN	16	14B
CONTRACT NO. 72296				
ILLINOIS FED. AID PROJECT				



SIGN	MILES AHEAD	WITH
1	7	M5-1L
1A	7	M5-1R
1B	7	M6-3
2	5	M5-1R
2A	5	M6-3
2B	5	M5-1L
2C	4,5	M6-3
3	4	M6-3
4	2.5	M5-1L
4A	2.5	M5-1R



MODEL: Detour Sheet (Sheet)
FILE NAME: c:\p\work\1172286-sht detour.dgn

USER NAME = Jonathan.Cox	DESIGNED -	REVISED -
	DRAWN -	REVISED -
	CHECKED -	REVISED -
PLOT DATE = 1/28/2026	DATE -	REVISED -

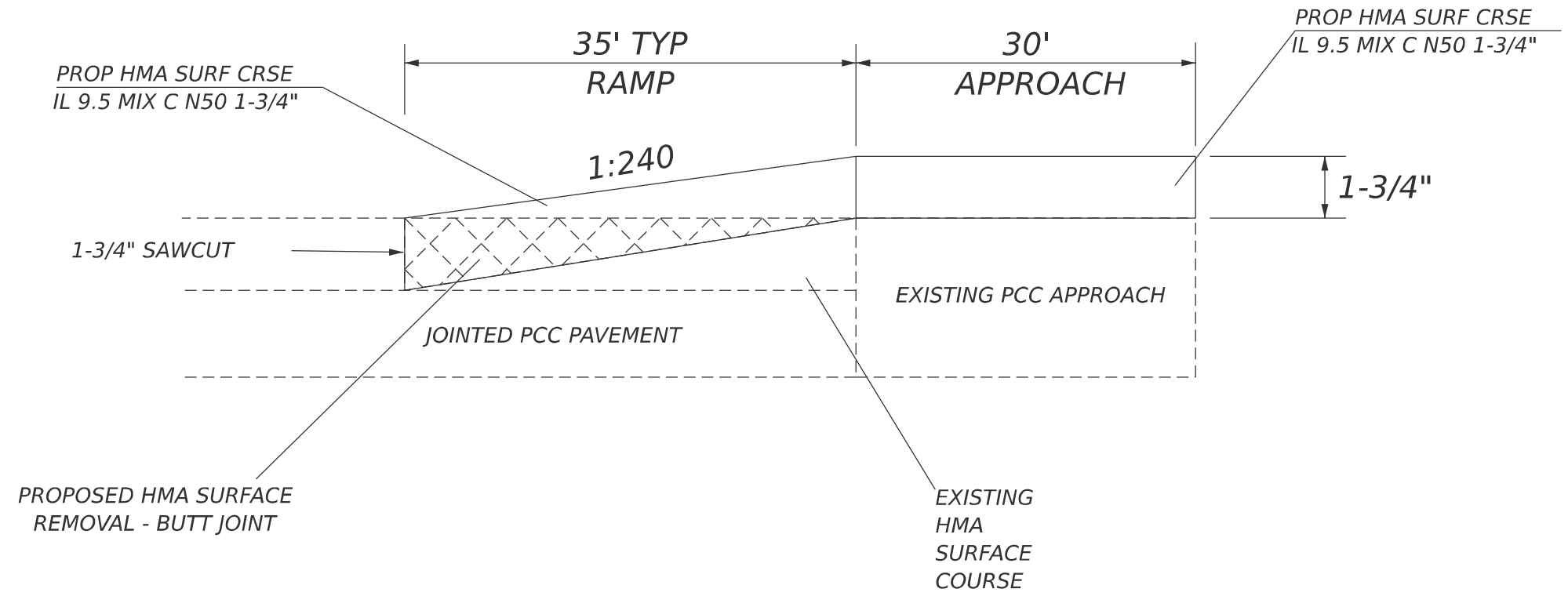
**STATE OF ILLINOIS
DEPARTMENT OF TRANSPORTATION**

OLD IL 121 DETOUR PLAN

SCALE: SHEET 1 OF 1 SHEETS STA. TO STA.

F.A.S RTE.	SECTION	COUNTY	TOTAL SHEETS	SHEET NO.
1774	(111B-1)BDR	LOGAN	16	15
CONTRACT NO. 72296				
ILLINOIS FED. AID PROJECT				

054-0102 SUGAR CREEK
 STA 1512+06.00 TO STA 1512+71.00
 STA 1517+80.00 TO 1518+45.00



BUTT JOINT DETAIL

MODEL: Detail Sheet [Sheet]
 FILE NAME: c:\p\work\172296\172296-shd-detail.dgn

USER NAME = Jonathan.Cox	DESIGNED -	REVISED -
	DRAWN -	REVISED -
	CHECKED -	REVISED -
PLOT DATE = 1/29/2026	DATE -	REVISED -

STATE OF ILLINOIS
 DEPARTMENT OF TRANSPORTATION

BUTT JOINT DETAIL

SCALE: SHEET 1 OF 1 SHEETS STA. TO STA.

F.A.S RTE.	SECTION	COUNTY	TOTAL SHEETS	SHEET NO.
1774	(111B-1)BDR	LOGAN	16	16
CONTRACT NO. 72296				
ILLINOIS FED. AID PROJECT				