

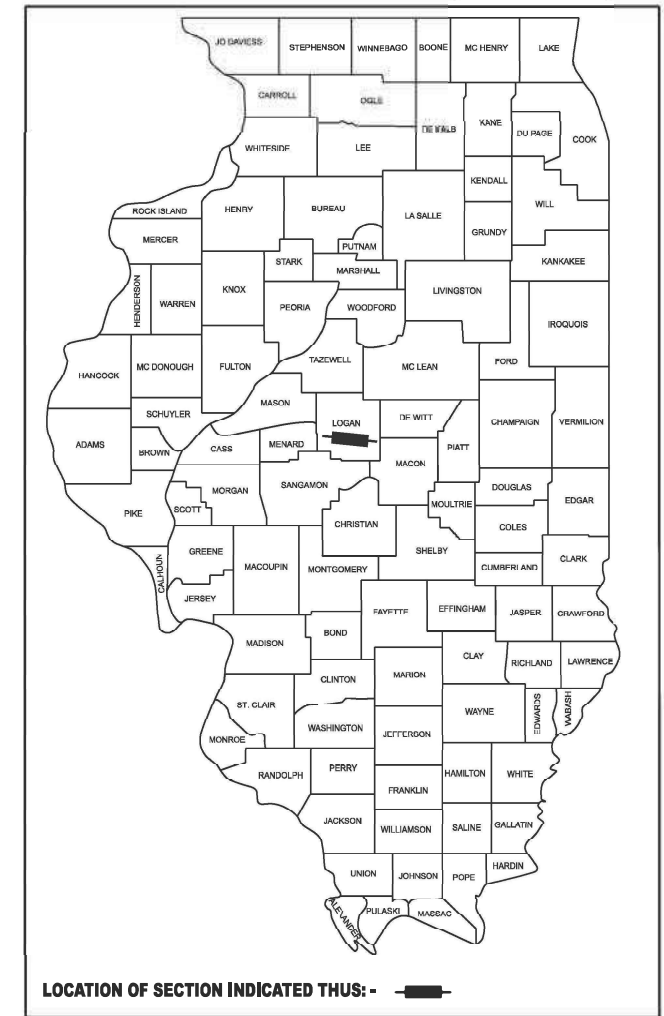
STATE OF ILLINOIS
DEPARTMENT OF TRANSPORTATION

F.A.P. RTE.	SECTION	COUNTY	TOTAL SHEETS	SHEET NO.
320	134RS-11, 135RS-2	LOGAN	19	1
		ILLINOIS	CONTRACT NO. 72441	

PROPOSED HIGHWAY PLANS

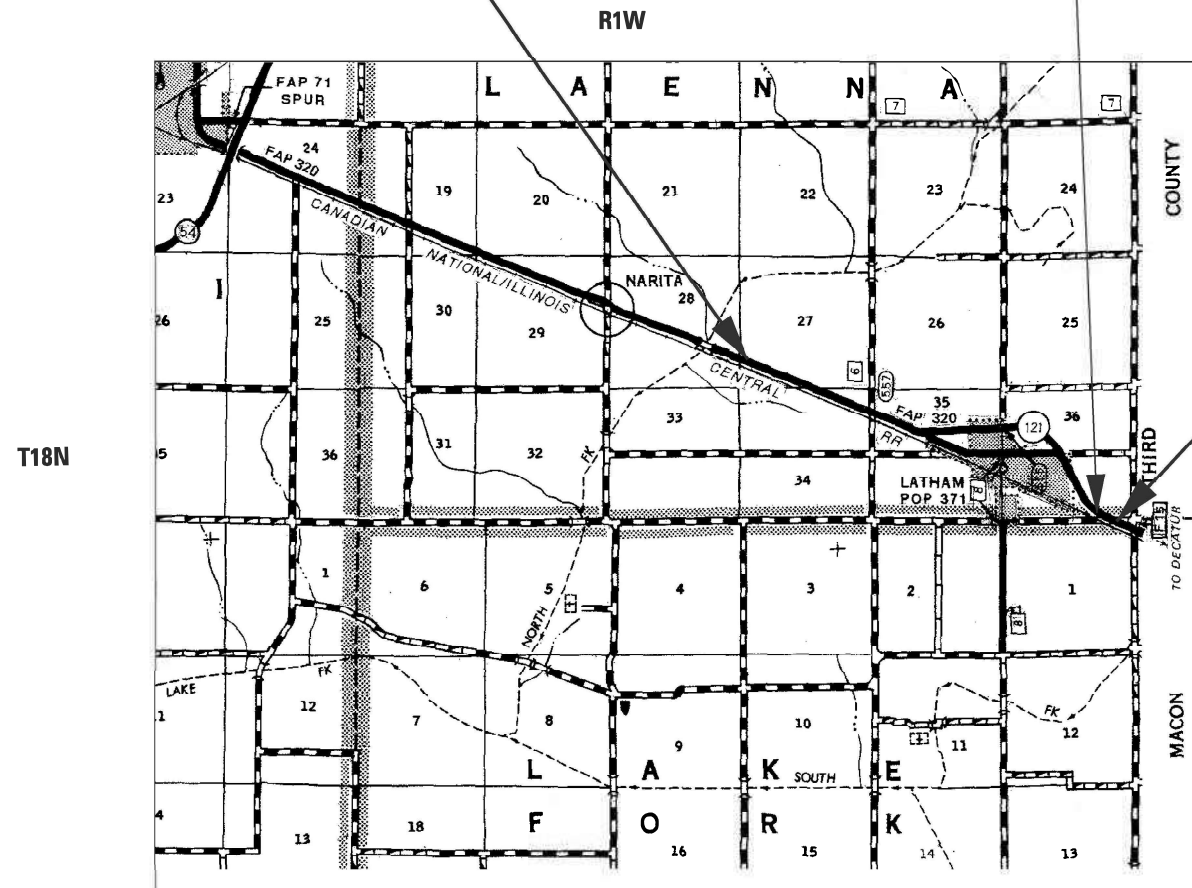
FAP ROUTE 320 (IL 121)
SECTION 134RS-11, 135RS-2
NHPP-79XH(150)
3P DESIGNED OVERLAY
LOGAN COUNTY
C-96-087-25

D-96-051-25



PROJECT BEGINS (IL 121)
STA 311 + 29.36

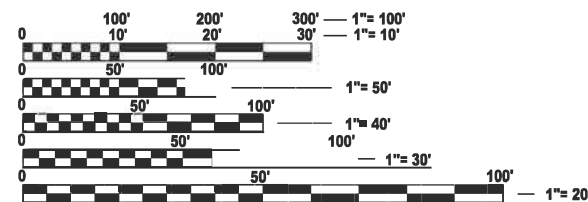
STA 438 + 89.02 BK =
STA 434 + 30.10 AH



PROJECT ENDS (IL 121)
STA 439 + 08.13

OTHER PRINCIPAL ARTERIAL

ADT 3550	(2025)
PV 82%	(2025)
SU 4.0%	(2025)
MU 14.0%	(2025)



FULL SIZE PLANS HAVE BEEN PREPARED USING STANDARD ENGINEERING SCALES. REDUCED SIZED PLANS WILL NOT CONFORM TO STANDARD SCALES. IN MAKING MEASUREMENTS ON REDUCED PLANS, THE ABOVE SCALES MAY BE USED.

J.U.L.I.E.
JOINT UTILITY LOCATION INFORMATION FOR EXCAVATION
1-800-892-0123
OR 811

PROJECT ENGINEER JON KELLEY (217) 785-2739
PROJECT MANAGER CARL JOHNSON

GROSS LENGTH = 13237.67 FT. = 2.51 MILE
NET LENGTH = 13237.67 FT. = 2.51 MILE

CONTRACT NO. 72441

STATE OF ILLINOIS
DEPARTMENT OF TRANSPORTATION

SUBMITTED January 28, 2026

Teresa C. Price
REGIONAL ENGINEER

March 20, 2026
See A. E. [Signature]
ENGINEER OF DESIGN AND ENVIRONMENT

March 20, 2026
[Signature]
DIRECTOR OF HIGHWAYS PROJECT IMPLEMENTATION

PRINTED BY THE AUTHORITY
OF THE STATE OF ILLINOIS

GENERAL NOTES

1. THE CONTRACTOR SHALL NOTIFY THE DISTRICT 6 BUREAU OF OPERATIONS AT (217) 785-5306 THREE WEEKS PRIOR TO IMPLEMENTING ANY TRAFFIC CONTROL.
2. NO PASSING ZONES SHALL BE FIELD VERIFIED AND DOCUMENTED BY THE RESIDENT ENGINEER. THE RESIDENT ENGINEER SHALL NOTIFY THE BUREAU OF OPERATIONS IF THEY HAVE CONCERNS WITH ANY NO PASSING ZONES AND AT LEAST 14 DAYS PRIOR TO PLACEMENT OF FINAL PAVEMENT MARKING AT (217) 785-5306.
3. THE CONTRACTOR SHALL USE TYPE IV PAVEMENT MARKING TAPE AS SHORT-TERM PAVEMENT MARKING ON THE SURFACE LIFT.

INDEX OF SHEETS

- 1 COVER SHEET
- 2 GENERAL NOTES
- 3-4 SUMMARY OF QUANTITIES
- 5 TYPICALS
- 6-10 SCHEDULES OF QUANTITIES
- 11-15 PLAN SHEETS
- 16-19 DETAILS

HIGHWAY STANDARDS

- 000001-09
- 001006
- 642006-01
- 701001-02
- 701006-05
- 701011-04
- 701201-05
- 701301-04
- 701306-04
- 701311-03
- 701336-07
- 701901-11
- 780001-05
- 781001-04

MIXTURE USE	HMA SURFACE	HMA BINDER	HMA SHOULDER (LOWER LIFTS)	HMA SHOULDER (TOP LIFT) & INCIDENTAL HMA
PG	PG 58-28	PG 58-28	PG 58-28	PG 58-28
DESIGN AIR Voids	4.0% @ N50	4.0% @ N50	4.0% @ N50	4.0% @ N50
MIXTURE COMPOSITION	IL-9.5	IL-19.0	IL-19.0	IL-9.5
FRICTION AGGREGATE	MIX "C"	N/A	N/A	MIX "C"
MIXTURE WEIGHT	112 LB/SY*IN	112 LB/SY*IN	112 LB/SY*IN	112 LB/SY*IN
SUBLOT SIZE	800 TONS	800 TONS	N/A	N/A
QUALITY MANAGEMENT	QCP	QCP	QC/QA	QC/QA
MTD REQUIRED	YES	NO	NO	NO

RATES OF APPLICATION

THE FOLLOWING RATES OF APPLICATIONS HAVE BEEN ASSUMED IN CALCULATING PLAN QUANTITIES.

HMA SURFACE/BINDER	0.056 TONS/(SQ YD*IN)
AGGREGATE APPLICATION	1.6 TONS/CU YD
BITUMINIOUS MATERIALS - TACK COAT (EXISTING HMA, MILLED SURFACE, CONCRETE, MILLED/TINED CONCRETE)	0.05 LB/SQ FT
BITUMINIOUS MATERIALS - TACK COAT (BETWEEN HMA LIFTS, IL 4.75, BRICK)	0.025 LB/SQ FT

**STATE OF ILLINOIS
DEPARTMENT OF TRANSPORTATION
DIVISION OF HIGHWAYS
DISTRICT 6**

EXAMINED January 9, 20 26
J.A. DeBorja
ENGINEER OF OPERATIONS

EXAMINED January 9, 20 26
B.P. Smith
ENGINEER OF PROJECT IMPLEMENTATION

EXAMINED January 14, 20 26
M.V.
ENGINEER OF PROGRAM DEVELOPMENT

REV - MS

MODEL: General Notes (Sheet)
FILE NAME: c:\pwworking\blake.bettis@illinois.gov\d1105742\72441 - General Notes.dgn

	USER NAME = blake.bettis	DESIGNED -	REVISED -	STATE OF ILLINOIS DEPARTMENT OF TRANSPORTATION	GENERAL NOTES	F.A.P. RTE.	SECTION	COUNTY	TOTAL SHEETS	SHEET NO.
		DRAWN - BLAKE BETTIS	REVISED -			320	134RS-11, 135RS-2	LOGAN	19	2
		CHECKED -	REVISED -			CONTRACT NO. 72441				
	PLOT DATE = 1/26/2026	DATE - 11/3/2025	REVISED -		SCALE:	SHEET 1	OF 1	SHEETS	STA.	TO STA.
						ILLINOIS FED. AID PROJECT				

				6-01237-0000	
				NHPP FUNDING 80% FEDERAL 20% STATE	
CODE NO.	ITEM	UNIT	TOTAL QUANTITY	ROADWAY	
				0005	RURAL
20200100	EARTH EXCAVATION	CU YD	45	45	
35800100	PREPARATION OF BASE	SQ YD	281	281	
35800200	AGGREGATE BASE REPAIR	TON	91	91	
40200800	AGGREGATE SURFACE COURSE, TYPE B	TON	18	18	
40600290	BITUMINOUS MATERIALS (TACK COAT)	POUND	30,157	30,167	
40600370	LONGITUDINAL JOINT SEALANT	FOOT	13,328	13,328	
40600405	MATERIAL TRANSFER DEVICE	TON	2,985	2,985	
40600982	HOT-MIX ASPHALT SURFACE REMOVAL - BUTT JOINT	SQ YD	2,005	2,005	
40600990	TEMPORARY RAMP	SQ YD	95	95	
40603080	HOT-MIX ASPHALT BINDER COURSE, IL-19.0, N50	TON	4,478	4,478	
40604050	HOT-MIX ASPHALT SURFACE COURSE, IL-9.5, MIX "C", N50	TON	2,985	2,985	
40800029	BITUMINOUS MATERIALS (TACK COAT)	POUND	808	808	
40800050	INCIDENTAL HOT-MIX ASPHALT SURFACING	TON	304	304	
44000155	HOT-MIX ASPHALT SURFACE REMOVAL, 1 1/2"	SQ YD	44,382	44,382	

* - INDICATES PAY ITEM REQUIRES A SPECIAL PROVISION

MODEL: SOQ (Sheet)
FILE NAME: c:\p\work\pwr\blake.bettis@illinois.gov\1105742\72441_Schedules&Quantities.dgn

USER NAME = blake.bettis	DESIGNED -	REVISED -	STATE OF ILLINOIS DEPARTMENT OF TRANSPORTATION	SUMMARY OF QUANTITIES				F.A.P RTE.	SECTION	COUNTY	TOTAL SHEETS	SHEET NO.
	DRAWN - BLAKE BETTIS	REVISED -		320	134RS-11, 135RS-2	LOGAN	19	3				
	CHECKED -	REVISED -		CONTRACT NO. 72441								
PLOT DATE = 1/27/2026	DATE - 11/3/2025	REVISED -		SCALE:	SHEET 1	OF 2	SHEETS	STA.	TO STA.	ILLINOIS	FED. AID PROJECT	

CODE NO.	ITEM	UNIT	TOTAL QUANTITY	6-01237-0000
				NHPP FUNDING 80% FEDERAL 20% STATE
				ROADWAY
				0005
				RURAL
44200168	PAVEMENT PATCHING, TYPE II, 14 INCH	SQ YD	91	91
44200172	PAVEMENT PATCHING, TYPE III, 14 INCH	SQ YD	241	241
44200174	PAVEMENT PATCHING, TYPE IV, 14 INCH	SQ YD	137	137
48102100	AGGREGATE WEDGE SHOULDER, TYPE B	TON	883	883
48203100	HOT-MIX ASPHALT SHOULDERS	TON	1,921	1,921
64200108	SHOULDER RUMBLE STRIPS, 8 INCH	FOOT	25,735	25,735
67000400	ENGINEER'S FIELD OFFICE, TYPE A	CAL MO	9	9
67100100	MOBILIZATION	L SUM	1	1
70100450	TRAFFIC CONTROL AND PROTECTION, STANDARD 701201	L SUM	1	1
70100460	TRAFFIC CONTROL AND PROTECTION, STANDARD 701306	L SUM	1	1
70100600	TRAFFIC CONTROL AND PROTECTION, STANDARD 701336	L SUM	1	1
70107025	CHANGEABLE MESSAGE SIGN	CAL DA	15	15
70300100	SHORT TERM PAVEMENT MARKING	FOOT	3,999	3,999
70300150	SHORT TERM PAVEMENT MARKING REMOVAL	SQ FT	445	445

* - INDICATES PAY ITEM REQUIRES A SPECIAL PROVISION

CODE NO.	ITEM	UNIT	TOTAL QUANTITY	6-01237-0000
				NHPP FUNDING 80% FEDERAL 20% STATE
				ROADWAY
				0005
				RURAL
* 78009005	MODIFIED URETHANE PAVEMENT MARKING - LINE 5"	FOOT	32,547	32,547
* 78009024	MODIFIED URETHANE PAVEMENT MARKING - LINE 24"	FOOT	24	24
* 78100100	RAISED REFLECTIVE PAVEMENT MARKER	EACH	166	166
Ø Z0076600	TRAINEES	HOUR	1000	1000
78300200	RAISED REFLECTIVE PAVEMENT MARKER REMOVAL	EACH	166	166
Ø Z0076604	TRAINEES TRAINING PROGRAM GRADUATE	HOUR	1000	1000

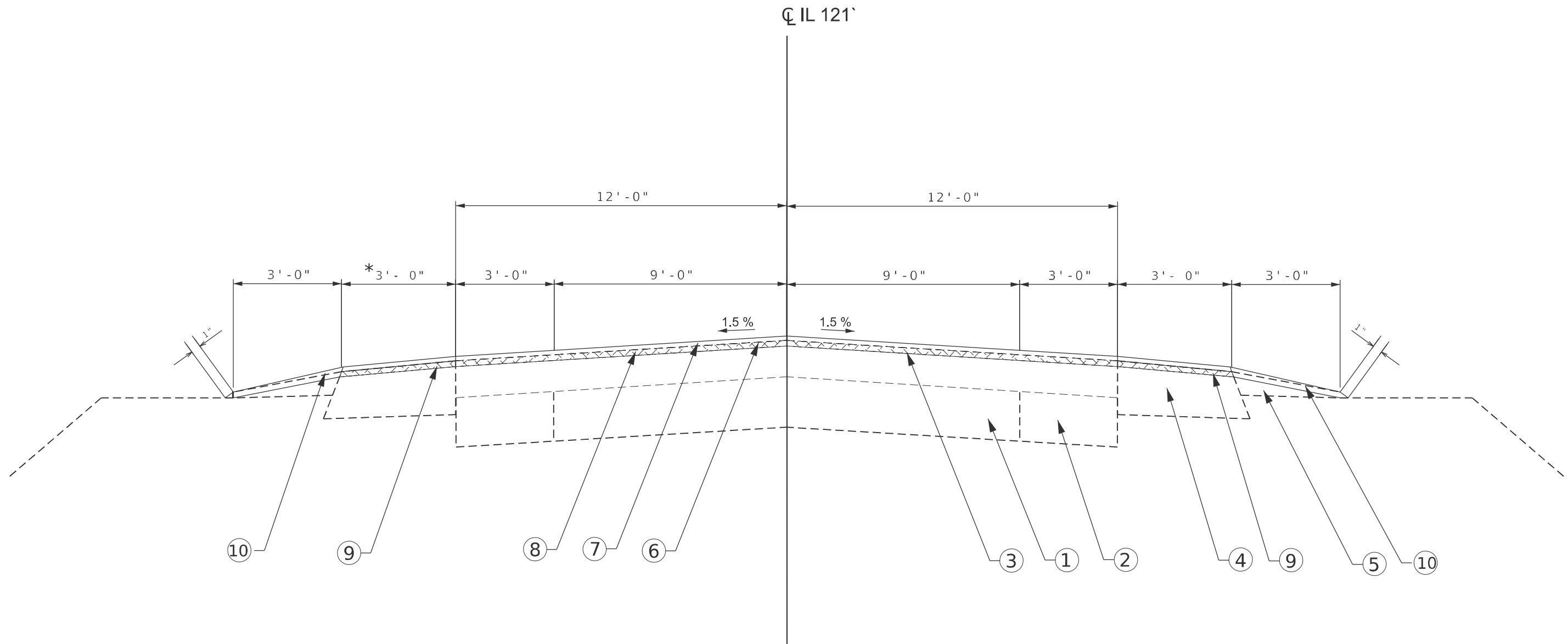
* SPECIALTY ITEM

Ø 0042

MODEL: SQ02 (Sheet)
FILE NAME: c:\p\work\pwr\blake.bettis@illinois.gov\110574272441_Schedules&Quantities.dgn

REV - MS

USER NAME = blake.bettis	DESIGNED -	REVISED -	STATE OF ILLINOIS DEPARTMENT OF TRANSPORTATION	SUMMARY OF QUANTITIES				F.A.P RTE.	SECTION	COUNTY	TOTAL SHEETS	SHEET NO.
	DRAWN - BLAKE BETTIS	REVISED -		320	134RS-11, 135RS-2	LOGAN	19	4				
	CHECKED -	REVISED -		CONTRACT NO. 72441								
PLOT DATE = 1/27/2026	DATE - 11/3/2025	REVISED -		SCALE:	SHEET 2	OF 2	SHEETS	STA.	TO STA.	ILLINOIS	FED. AID PROJECT	



*4' HMA SHOULDER FROM
STA. 311+29.38 TO STA. 323+17.92

FAP 320 IL 121

STA. 311+29.38 TO STA. 438+89.02

STATION EQUATION:

$$\begin{matrix} 438+89.02 & \text{BK=} \\ 434+30.10 & \text{AH} \end{matrix}$$

STA. 434+30.10 TO STA. 439+08.13

LEGEND

- 1 EXISTING PAVEMENT 9" - 6" - 9"
- 2 EXISTING BASE COURSE WIDENING (9")
- 3 EXISTING HMA OVERLAY (3"-5")
- 4 EXISTING HMA SHOULDER
- 5 EXISTING AGGREGATE SHOULDER TYPE. B
- 6 PROPOSED HMA BINDER (2.25")
- 7 PROPOSED HMA SURFACING (1.5")
- 8 PROPOSED MILLING (1.5")
- 9 PROPOSED HMA SHOULDER (TONS) - 3.75" (2 LIFTS)
- 10 PROPOSED AGGREGATE WEDGE SHOULDER

MODEL: TYPICAL [Sheet]
FILE NAME: c:\p\work\pav\blake.bettis@illinois.gov\1105742\05 72441_TypicalB.dgn

USER NAME = blake.bettis	DESIGNED -	REVISED -
	DRAWN - BLAKE BETTIS	REVISED -
	CHECKED -	REVISED -
PLOT DATE = 1/15/2026	DATE - 11/3/2025	REVISED -

**STATE OF ILLINOIS
DEPARTMENT OF TRANSPORTATION**

TYPICAL SECTION

SCALE: SHEET 1 OF 1 SHEETS STA. TO STA.

F.A.P. RTE.	SECTION	COUNTY	TOTAL SHEETS	SHEET NO.
320	134RS-11, 135RS-2	LOGAN	19	5
CONTRACT NO. 72441				
ILLINOIS FED. AID PROJECT				

AGGREGATE SHOULDERS QUANTITY						
					48102100	
LOCATION			DESCRIPTION	LENGTH	WIDTH	AGGREGATE WEDGE SHOULDERS, TYPE B (AVG DEPTH 2.25")
US 121				FOOT	FOOT	TON
STATION	TO	STATION				
LT 311+29.36	TO	LT 438+89.01	LT TWO WAY ROAD	12759.65	3.00	425.32
RT 311+29.36	TO	RT 438+89.01	RT TWO WAY ROAD	12759.65	3.00	425.32
STATION EQUATION 438+89.02 = 434+30.10						
LT 434+30.10	TO	LT 439+08.13	LT TWO WAY ROAD	478.00	3.00	15.93
RT 434+30.10	TO	RT 439+08.13	RT TWO WAY ROAD	478.00	3.00	15.93
				TOTAL		883

RAISED REFLECTIVE MARKERS						
				78100100	78300200	
STATIONING			DESCRIPTION	LENGTH	SPACING	
US 121				FOOT	FOOT	
STATION	TO	STATION				
311+29.36	TO	438+89.01	CENTERLINE	12759.65	80	160
STATION EQUATION 438+89.02 = 434+30.10						
434+30.10	TO	439+08.13	CENTERLINE	478	80	6
				TOTAL		166

MODEL: AGG_Shoulder_Quantity (Sheet)
 FILE NAME: c:\p\work\pav\105742\72441_Schedules&Quantities.dgn

USER NAME = blake.bettis	DESIGNED -	REVISED -
	DRAWN - BLAKE BETTIS	REVISED -
	CHECKED -	REVISED -
PLOT DATE = 1/19/2026	DATE - 11/3/2025	REVISED -

STATE OF ILLINOIS
DEPARTMENT OF TRANSPORTATION

QUANTITIES

SCALE: SHEET 1 OF 5 SHEETS STA. TO STA.

F.A.P. RTE.	SECTION	COUNTY	TOTAL SHEETS	SHEET NO.
320	134RS-11, 135RS-2	LOGAN	19	6
CONTRACT NO. 72441				
ILLINOIS FED. AID PROJECT				

PAVEMENT MARKING SCHEDULE									
STATIONING				LENGTH	DESCRIPTION	78009005			78009024
						MODIFIED	MODIFIED	MODIFIED	MODIFIED
						URETHANE	URETHANE	URETHANE	URETHANE
						PAVT MKG	PAVT MKG	PAVT MKG	PAVT MKG
						LINE- 5"	LINE- 5"	LINE- 5"	LINE - 24"
						WHITE	YELLOW	YELLOW	WHITE
EDGE LINE	SOLID	SKIP DASH	SOLID						
US 121									
STATION	TO	STATION	FOOT		FOOT	FOOT	FOOT	FOOT	
311+29.36	TO	322+62.61	1135.3	LEFT EDGELINE	1135.3				
311+29.36	TO	323+04.32	1175.0	RIGHT EDGELINE	1175.0				
311+29.36	TO	380+38.13	6898.8	YELLOW SKIP DASH CENTER			1727.2		
323+39.55	TO	376+02.91	5263.4	LEFT EDGELINE	5263.4				
323+55.18	TO	344+58.75	2103.6	RIGHT EDGELINE	2103.6				
345+31.27	TO	345+46.63	16.7	STOP BAR WHITE SOLID LINE				16.7	
346+05.16	TO	375+94.90	2989.7	RIGHT EDGELINE	2989.7				
376+74.11	TO	403+14.06	2639.4	LEFT EDGELINE	2639.4				
376+90.40	TO	402+49.55	2559.2	RIGHT EDGELINE	2559.2				
380+51.25	TO	391+84.95	1133.7	YELLOW SOLID LINE RIGHT		1133.7			
380+51.27	TO	391+84.95	1133.7	YELLOW SKIP DASH LEFT			283.4		
391+95.90	TO	401+14.50	918.6	YELLOW SOLID LINE DOUBLE		1837.2			
401+14.50	TO	409+19.32	804.8	YELLOW SOLID LINE LEFT		804.8			
401+60.25	TO	409+55.29	795.0	YELLOW SKIP DASH RIGHT			198.8		
403+42.35	TO	403+51.26	7.5	STOP BAR WHITE SOLID LINE				7.5	
403+80.82	TO	433+24.44	2943.4	RIGHT EDGELINE	2943.4				
404+07.41	TO	438+89.01	3481.6	LEFT EDGELINE	3481.6				
409+85.29	TO	438+89.01	2903.7	YELLOW SKIP DASH CENTER			725.9		
434+19.32	TO	438+89.01	469.7	RIGHT EDGELINE	469.7				
Station Equation STA 438+89.02 = STA 434+30.10									
434+30.10	TO	439+08.13	478.0	LEFT EDGELINE	478.0				
434+30.10	TO	439+08.13	478.0	RIGHT EDGELINE	478.0				
434+30.10	TO	439+08.13	478.0	YELLOW SKIP DASH CENTER			119.5		
					TOTAL	25716.1	3775.7	3054.8	24.2

SHORT TERM PAVEMENT MARKING							
LOCATION	STATION	TO	STATION	OFFSET	LENGTH	70300100	70300150
						CENTERLINE	PAVEMENT
						APPLICATION	MARKING
						4' PER 40'	REMOVAL
					(FOOT)	(FOOT)	(SQ FT)
ML	310+87.00	TO	438+89	RT	12,802	3,841	427
STATION EQUATION 438+89.02 BK = 434+30.10 AH							
ML	434+30.10	TO	439+55	LT	525	158	18
(3 APPLICATIONS - MILLING, BINDER, SURFACE)					TOTAL	3,999	445

MODEL: PAVT_MKKG_SCHEDULE (Sheet)
 FILE NAME: c:\pav\work\pav\blake.bettis@illinois.gov\110574272441_Schedules&Quantities.dgn

USER NAME = blake.bettis	DESIGNED -	REVISED -
	DRAWN - BLAKE BETTIS	REVISED -
	CHECKED -	REVISED -
PLOT DATE = 1/19/2026	DATE - 11/3/2025	REVISED -

STATE OF ILLINOIS
DEPARTMENT OF TRANSPORTATION

PAVEMENT MARKING SCHEDULE

SCALE: SHEET 2 OF 5 SHEETS STA. TO STA.

F.A.P. RTE.	SECTION	COUNTY	TOTAL SHEETS	SHEET NO.
320	134RS-11, 135RS-2	LOGAN	19	7
CONTRACT NO. 72441				
ILLINOIS FED. AID PROJECT				

HMA RESURFACING SCHEDULE													
STATIONING	Mainline Width	SHOULDER WIDTH	LENGTH	DESCRIPTION	40603080	40604050	48203100	40600290	40600370	40600982	44000155		
					HMA BINDER COURSE 2.25"	HMA SURFACE COURSE 1.5"	HOT-MIX SHOULDERS 3.75"	BITUMINOUS MATERIALS (TACK COAT)	LONGITUDINAL JOINT SEALANT	HMA SURFACE REMOVAL BUTT JOINT	HMA SURFACE REMOVAL 1.5"		
					(TON)	(TON)	(TON)	(POUND)	(FOOT)	(SQ YD)	(SQ YD)		
US 121													
310+82.00	TO	311+32.00	24	8	45	BUTT JOINT	15.1	10.1	8.4	108.0	45.0	160.0	0.0
311+32.00	TO	322+62.61	12	4	1133.25	MAINLINE AND LT SHOULDER HMA	190.4	126.9	105.8	1359.9	1133.3	0.0	2014.7
311+29.36	TO	323+04.32	12	4	1174.96	MAINLINE AND RT SHOULDER HMA	197.4	131.6	109.7	1410.0	0.0	0.0	2088.8
322+62.61	TO	438+89.01	12	3	11626.40	MAINLINE AND LT SHOULDER HMA	1953.2	1302.2	813.8	13079.7	11626.4	0.0	19377.3
323+04.32	TO	438+89.01	12	3	11584.69	MAINLINE AND RT SHOULDER HMA	1946.2	1297.5	810.9	13032.8	0.0	0.0	19307.8
STATION EQUATION 438+89.02 = 434+30.10													
434+30.10	TO	LT 439+08.13	12	3	478	MAINLINE AND LT HMA SHOULDER	80.3	53.5	33.5	537.8	478.0	0.0	796.7
434+30.10	TO	RT 439+08.13	12	3	478	MAINLINE AND RT HMA SHOULDER	80.3	53.5	33.5	537.8	0.0	0.0	796.7
439+10.00	TO	439+55.00	24	6	45	BUTT JOINT	15.1	10.1	6.3	101.3	45.0	150.0	0.0
TOTAL							4478.1	2985.4	1921.8	30167.1	13327.7	310.0	44382.0

RUMBLE STRIP SCHEDULE				
STATIONING	DESCRIPTION	64200108		
		RUMBLE STRIPS 8"		
US 121				
311+32.00	TO	322+62.61	LEFT SHOULDER RUMBLE STRIP	1153.3
311+29.36	TO	323+04.32	RIGHT SHOULDER RUMBLE STRIP	1175.0
323+39.55	TO	376+02.91	LEFT SHOULDER RUMBLE STRIP	5263.4
323+55.18	TO	344+58.75	RIGHT SHOULDER RUMBLE STRIP	2103.6
346+05.16	TO	375+94.90	RIGHT SHOULDER RUMBLE STRIP	2989.7
376+74.11	TO	403+14.06	LEFT SHOULDER RUMBLE STRIP	2640.0
376+90.40	TO	402+49.55	RIGHT SHOULDER RUMBLE STRIP	2559.2
403+80.82	TO	433+24.44	RIGHT SHOULDER RUMBLE STRIP	2943.6
404+07.41	TO	438+89.01	LEFT SHOULDER RUMBLE STRIP	3481.6
434+19.32	TO	438+89.01	RIGHT SHOULDER RUMBLE STRIP	469.7
STATION EQUATION 438+89.02 = 434+30.10				
434+30.10	TO	439+08.13	LEFT SHOULDER RUMBLE STRIP	478.0
434+30.10	TO	439+10.00	RIGHT SHOULDER RUMBLE STRIP	478.0
TOTAL				25735.0

ENTRANCE AND SIDEROAD SCHEDULE									
LOCATION	TYPE	EXISTING MATERIAL	PROPOSED MATERIAL	PR. HMA THICKNESS	20200100	40200800	40600982	40800029	40800050
					EARTH EXCAVATION	AGGREGATE SURFACE COURSE TYPE-B	HMA SURFACE REMOVAL BUTT JOINT	BITUMINOUS MATERIALS (TACK COAT)	INCIDENTIAL HMA SURFACE
					(CU YD)	(TON)	(SQ YD)	(POUND)	(TON)
US 121									
LT 323+17.92	SIDEROAD	HMA	HMA	2.25			154.4	69.5	19.5
RT 323+17.92	SIDEROAD	HMA	HMA	2.25			71.3	32.1	9.0
LT 343+67.04	CE	HMA	HMA	2.25			32.3	14.6	4.1
RT 345+00.38	SIDEROAD	HMA	HMA	2.25			611.2	275.1	77.1
LT 376+46.30	SIDEROAD	HMA	HMA	2.25			64.0	28.8	8.1
RT 376+46.30	SIDEROAD	HMA	HMA	2.25			220.9	99.5	27.9
LT 403+41.94	SIDEROAD	HMA	HMA	2.25			105.0	47.3	13.3
RT 403+41.94	SIDEROAD	HMA	HMA	2.25			370.5	166.8	46.7
RT 428+73.76	CE	EARTH/AGGREGATE	EARTH/AGGREGATE	8.00	10.8	4.4		11.0	21.8
RT 429+33.47	CE	EARTH/AGGREGATE	EARTH/AGGREGATE	8.00	8.9	3.6		9.0	18.0
RT 430+17.41	CE	EARTH/AGGREGATE	EARTH/AGGREGATE	8.00	9.8	4.0		9.9	19.8
RT 433+87.39	SIDEROAD	HMA	HMA	2.25			65.4	29.5	8.3
STATION EQUATION 438+89.02 = 434+30.10									
LT 436+78.29	CE	EARTH/AGGREGATE	EARTH/AGGREGATE	8.00	7.2	2.9		7.3	14.5
LT 437+91.16	CE	EARTH/AGGREGATE	EARTH/AGGREGATE	8.00	7.8	3.2		7.9	15.7
TOTAL					44.5	18.1	1695.0	808.3	303.8

MODEL: HMA AND ENTRANCES (Sheet)
 FILE NAME: c:\pwworking\illinois.gov\1105742\72441_Schedules&Quantities.dgn

USER NAME = blake.bettis	DESIGNED -	REVISED -
	DRAWN - BLAKE BETTIS	REVISED -
	CHECKED -	REVISED -
PLOT DATE = 1/23/2026	DATE - 11/3/2025	REVISED -

**STATE OF ILLINOIS
DEPARTMENT OF TRANSPORTATION**

HMA PAVING SCHEDULE

SCALE: SHEET 3 OF 5 SHEETS STA. TO STA.

F.A.P. RTE.	SECTION	COUNTY	TOTAL SHEETS	SHEET NO.
320	134RS-11, 135RS-2	LOGAN	19	8
CONTRACT NO. 72441				
ILLINOIS FED. AID PROJECT				

PATCHING SCHEDULE

STA	NB/SB	LENGTH (FT)	WIDTH (FT)	AREA (SQ YD)	TYPE II AREA (SQ YDS)	TYPE III AREA (SQ YDS)	TYPE IV AREA (SQ YDS)
413+98.09	NB	16	12	21.33		21.33	
405+33.90	NB	15	12	20		20	
399+74.70	NB	13	12	17.33		17.33	
398+73.03	NB	6	12	8	8		
384+49.65	NB	12	12	16		16	
367+72.09	NB	20	12	26.67			26.67
362+12.90	NB	38	6	25.33			25.33
359+58.73	NB	52	6	34.67			34.67
358+57.06	NB	10	12	13.33	13.33		
365+70.25	SB	6	12	8	8		
365+70.25	SB	6	12	8	8		
370+77.10	SB	6	12	8	8		
375+83.95	SB	13	12	17.33		17.33	
385+97.65	SB	14	6	9.33	9.33		
385+97.65	SB	35	6	23.33		23.33	
385+97.65	SB	76	6	50.67			50.67
391+04.05	SB	15	12	20		20	
390+4.05	SB	18	12	24		24	
396+11.35	SB	11	12	14.67	14.67		
401+18.20	SB	10	12	13.33	13.33		
401+18.20	SB	30	6	20		20	
406+25.05	SB	14	12	18.67		18.67	
406+25.05	SB	16	12	21.33		21.33	
411+31.91	SB	6	12	8	8		
411+31.991	SB	16	12	21.33		21.33	
TOTAL				468.65	90.66	240.65	137.34

MODEL: PATCH SURVEY [Sheet]
FILE NAME: c:\p\work\pwr\blake.bettis@illinois.gov\1105742\72441_Schedules&Quantities.dgn

USER NAME = blake.bettis	DESIGNED -	REVISED -
	DRAWN - BLAKE BETTIS	REVISED -
	CHECKED -	REVISED -
PLOT DATE = 1/27/2026	DATE - 11/3/2025	REVISED -

**STATE OF ILLINOIS
DEPARTMENT OF TRANSPORTATION**

PATCHING SURVEY

SCALE: SHEET 4 OF 5 SHEETS STA. TO STA.

F.A.P. RTE.	SECTION	COUNTY	TOTAL SHEETS	SHEET NO.
320	134RS-11, 135RS-2	LOGAN	19	9
CONTRACT NO. 72441				
ILLINOIS FED. AID PROJECT				

HORIZONTAL ALIGNMENT CONTROL								
NAD83/1997 ADJ - STATE PLANE WEST ZONE								
POINT TYPE	STATION	NORTHING	EASTING	RADIUS	LENGTH	TANGENT	DELTA/THETA	ROTATION
ALIGNMENT NAME:		IL121E001-SE						
DESCRIPTION:		IL 121 MAINLINE						
POT	219+04.02	1209107.309	2563036.308					
PI	250+00.00	1207982.196	2565920.608					
PI	275+00.00	1207073.668	2568249.68					
PI	300+00.00	1206165.139	2570578.752					
PC	333+38.91	1204951.742	2573689.377					
PI	339+99.91	1204711.527	2574305.183	2866.87	1299.29	661.00	25°58'01.31"	LEFT
PT	346+38.20	1204765.196	2574964.001					
PI	374+00.00	1204989.437	2577716.682					
PC	378+92.60	1205029.433	2578207.656					
PI	395+14.90	1205161.154	2579824.6	2292.17	2823.55	1622.30	70°34'42.66"	RIGHT
PT	407+16.16	1203680.016	2580486.483					
PI	417+14.95	1202768.132	2580893.981					
PC	417+41.52	1202743.878	2580904.82					
PI	428+68.54	1201714.925	2581364.633	2865.00	2147.50	1127.02	42°56'48.61"	LEFT
PT	438+89.02	1201275.026	2582402.254					
ALIGNMENT NAME:		IL121E003-SE						
DESCRIPTION:		IL 121 MAINLINE						
POT	434+30.10	1201275.026	2582402.254					
POT	445+30.10	1200845.672	2583415.001					

ALIGNMENT NAME:		121_2200 AVE						
DESCRIPTION:		SIDE ROAD						
POT	9+11.70	1205411.048	2572735.697					
PI	10+00.00	1205322.781	2572738.193					
POT	10+72.22	1205250.598	2572740.234					
ALIGNMENT NAME:		121_4TH ST						
DESCRIPTION:		SIDE ROAD						
POT	343+88.73	1204757.31	2574826.368					
PC	345+91.55	1204585.329	2574933.875					
PI	348+16.75	1204394.369	2575053.246	713.31	436.27	225.20	35°02'34.80"	
PT	350+27.82	1204306.568	2575260.625					
PC	356+83.93	1204050.764	2575864.814					
PI	360+05.53	1203925.379	2576160.964	1499.91	633.61	321.60	24°12'12.33"	
PT	363+17.54	1203932.431	2576482.487					
PI	377+00.00	1203962.743	2577864.619					
PC	391+32.19	1203994.146	2579296.465					
PI	392+46.76	1203996.658	2579411.008	3344.39	229.05	114.57	03°55'26.68"	
PT	393+61.24	1203991.326	2579525.454					
PC	394+99.83	1203984.876	2579663.889					
PC	394+99.83	1203984.876	2579663.889					
PI	396+39.94	1203978.355	2579803.848	2668.76	279.96	140.11	06°00'37.97"	
PT	397+79.79	1203986.525	2579943.719					
POT	401+43.34	1204007.724	2580306.653					
ALIGNMENT NAME:		121_2300 AVE						
DESCRIPTION:		SIDE ROAD						
POT	8+33.26	1204842.372	2577961.180					
POT	11+56.51	1205165.548	2577954.464					
ALIGNMENT NAME:		121_350 ST-E						
DESCRIPTION:		SIDE ROAD						
POT	10+00.00	1204007.724	2580306.653					
POT	11+50.00	1204016.470	2580456.398					
ALIGNMENT NAME:		121_300 ST						
DESCRIPTION:		SIDE ROAD						
POT	8+75.47	1201446.787	2581852.659					
POT	10+00.00	1201510.154	2581959.865					

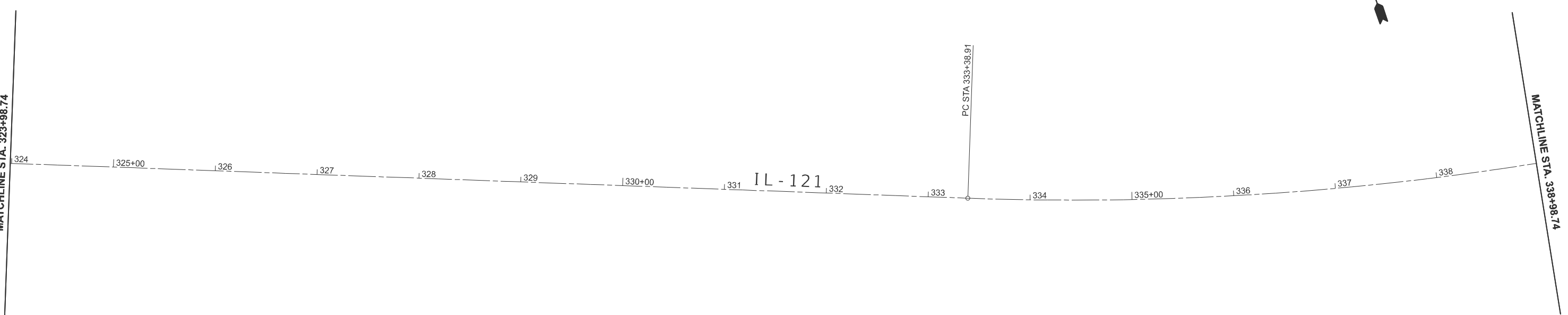
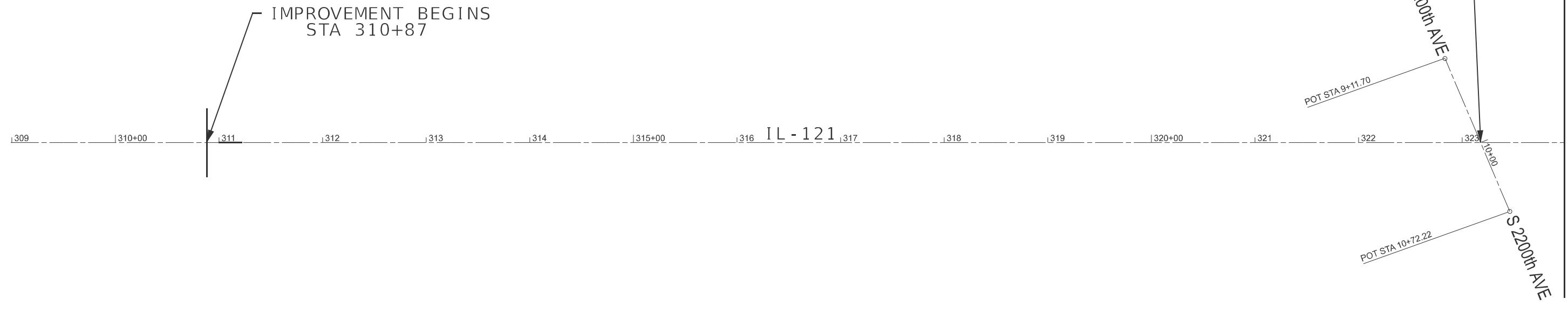
MODEL: Horizontal alignment (Sheet)
 FILE NAME: c:\pwworking\blake.bettis@illinois.gov\d110574272441_Schedules&Quantities.dgn

USER NAME = blake.bettis	DESIGNED -	REVISED -
	DRAWN - BLAKE BETTIS	REVISED -
	CHECKED -	REVISED -
PLOT DATE = 1/19/2026	DATE - 11/3/2025	REVISED -

**STATE OF ILLINOIS
DEPARTMENT OF TRANSPORTATION**

SCALE: SHEET 5 OF 5 SHEETS STA. TO STA.

F.A.P. RTE.	SECTION	COUNTY	TOTAL SHEETS	SHEET NO.
320	134RS-11, 135RS-2	LOGAN	19	10
CONTRACT NO. 72441				
ILLINOIS FED. AID PROJECT				



MODEL: IL121E001-SE-IL-121-Plan 1 (Sheet)
 FILE NAME: c:\p\work\pwr\il121\0574272441 Pln_Sht.dgn

USER NAME = blake.bettis	DESIGNED -	REVISED -
	DRAWN - BLAKE BETTIS	REVISED -
	CHECKED -	REVISED -
PLOT DATE = 1/27/2026	DATE - 11/3/2025	REVISED -

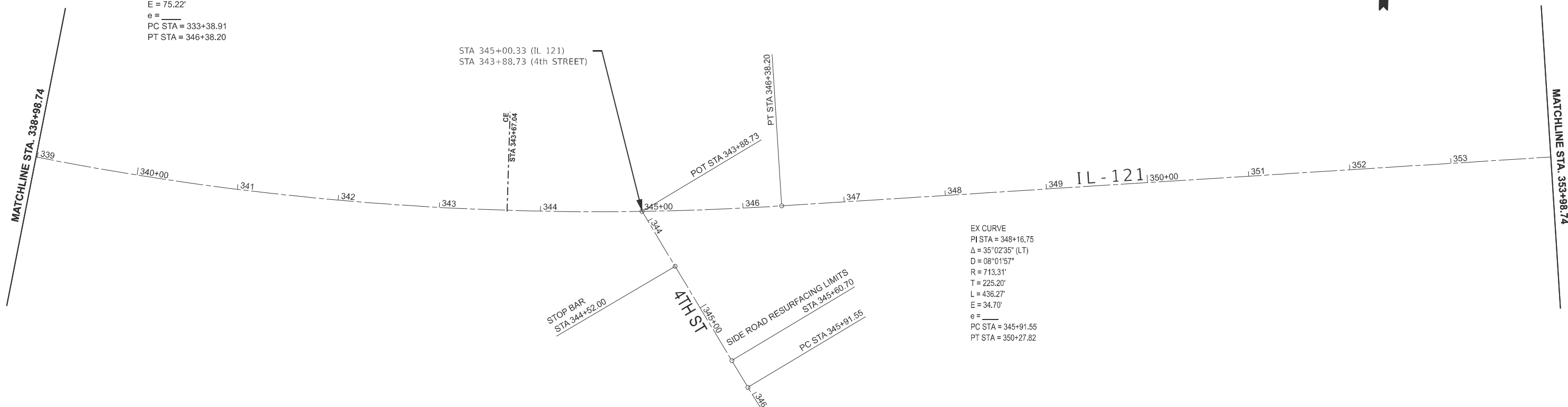
**STATE OF ILLINOIS
DEPARTMENT OF TRANSPORTATION**

PLAN SHEETS

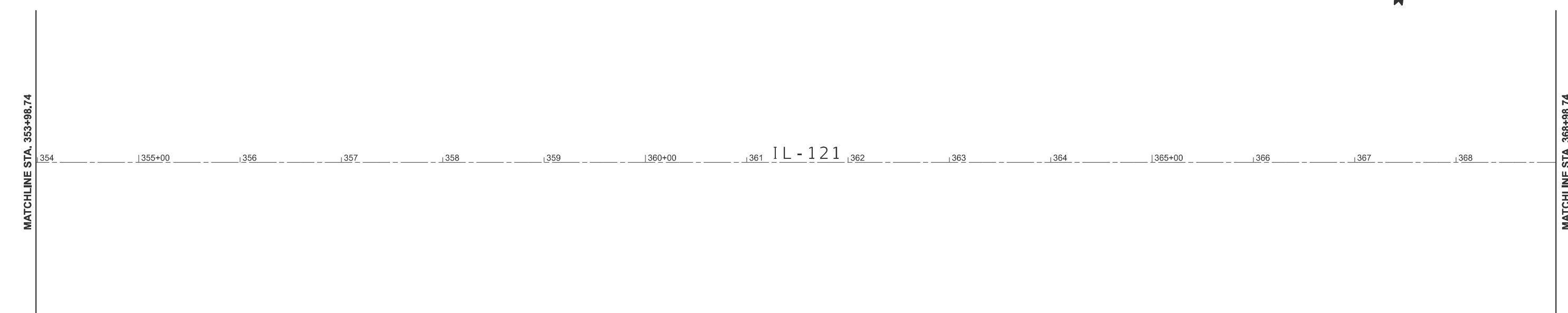
SCALE: 1"=50' SHEET 1 OF 5 SHEETS STA. 308+98.74 TO STA. 338+98.74

F.A.P. RTE.	SECTION	COUNTY	TOTAL SHEETS	SHEET NO.
320	134RS-11, 135RS-2	LOGAN	19	11
CONTRACT NO. 72441				
ILLINOIS FED. AID PROJECT				

EX CURVE
 PI STA = 339+99.91
 $\Delta = 25^\circ 58' 01''$ (LT)
 $D = 01^\circ 59' 55''$
 $R = 2,866.87'$
 $T = 661.00'$
 $L = 1299.29'$
 $E = 75.22'$
 $e =$
 PC STA = 333+38.91
 PT STA = 346+38.20



EX CURVE
 PI STA = 348+16.75
 $\Delta = 35^\circ 02' 35''$ (LT)
 $D = 08^\circ 01' 57''$
 $R = 713.31'$
 $T = 225.20'$
 $L = 436.27'$
 $E = 34.70'$
 $e =$
 PC STA = 345+91.55
 PT STA = 350+27.82



MODEL: IL121E001-SE - IL 121 - Plan 3 (Sheet)
 FILE NAME: c:\p\work\105742\72441 Pln_Sht.dgn

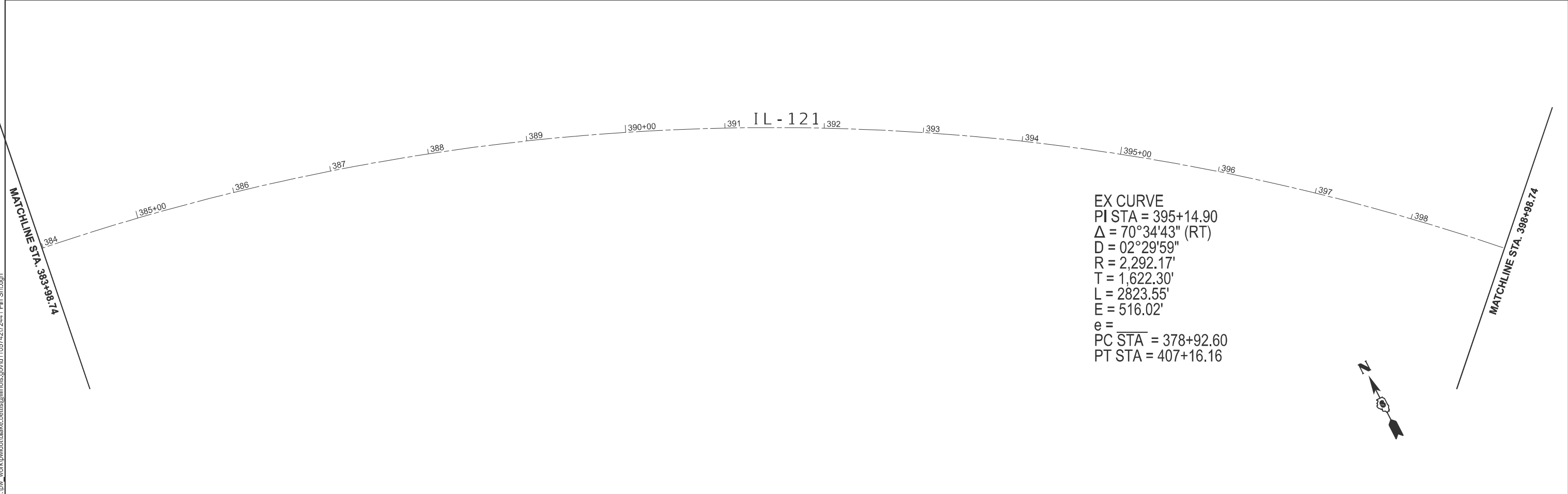
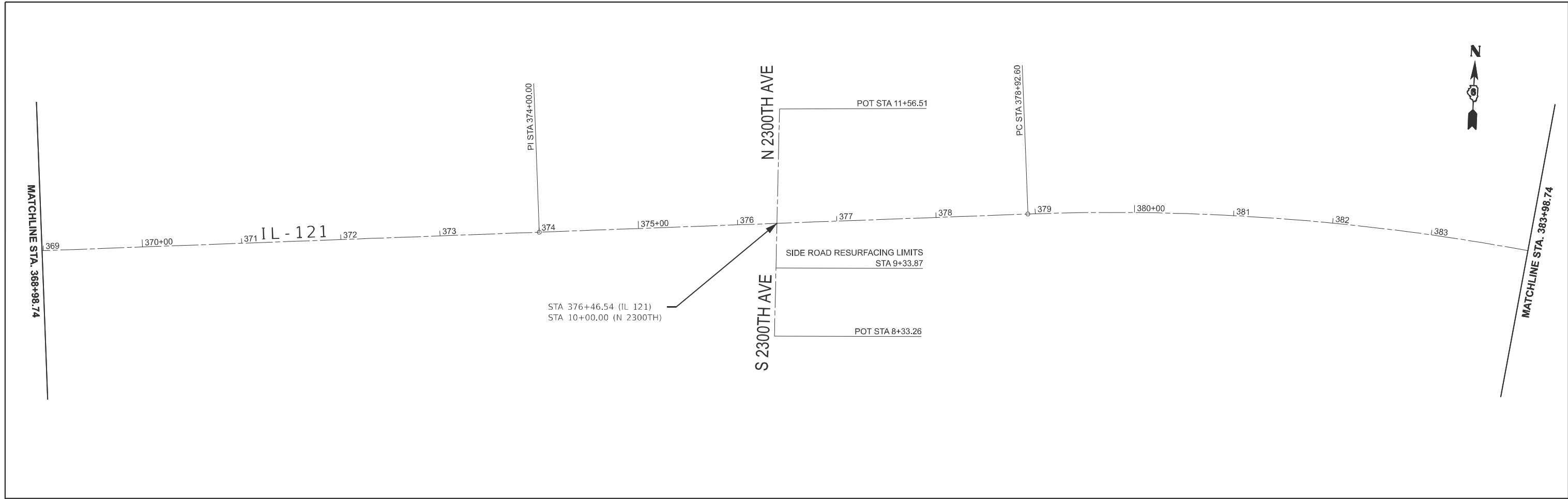
USER NAME = blake.bettis	DESIGNED -	REVISED -
	DRAWN - BLAKE BETTIS	REVISED -
	CHECKED -	REVISED -
PLOT DATE = 1/28/2026	DATE - 11/3/2025	REVISED -

**STATE OF ILLINOIS
 DEPARTMENT OF TRANSPORTATION**

PLAN SHEETS

SCALE: 1"=50' SHEET 2 OF 5 SHEETS STA. 338+98.74 TO STA. 368+98.74

F.A.P. RTE.	SECTION	COUNTY	TOTAL SHEETS	SHEET NO.
320	134RS-11, 135RS-2	LOGAN	19	12
CONTRACT NO. 72441				
ILLINOIS FED. AID PROJECT				



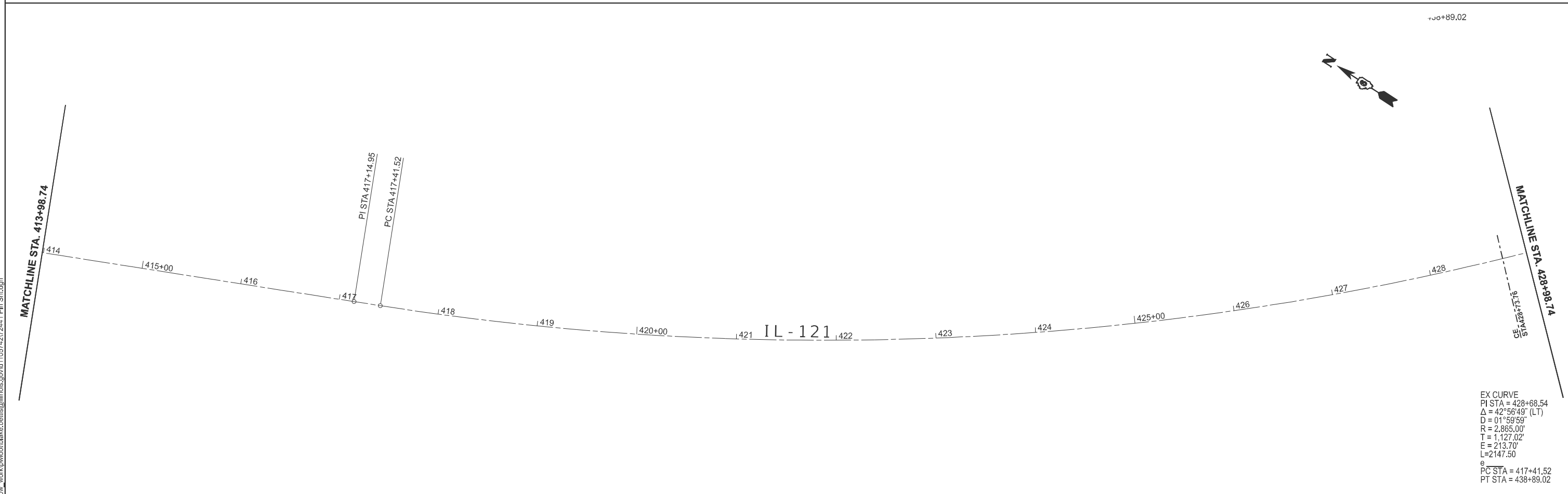
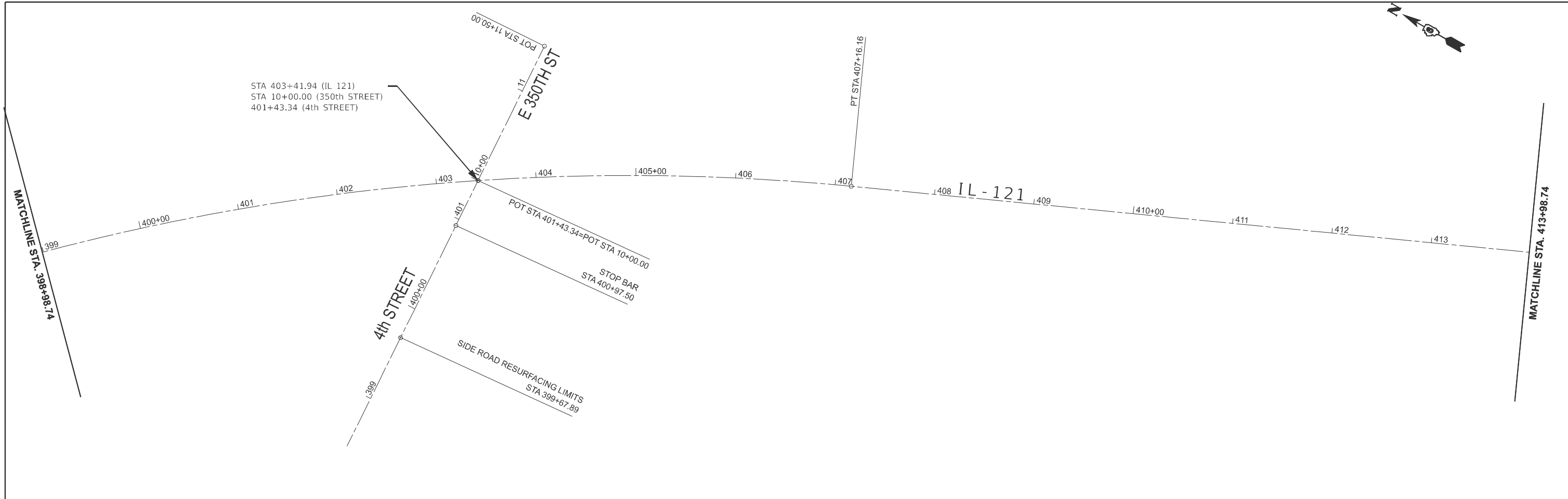
MODEL: IL121E001-SE - IL 121 - Plan 5 (Sheet)
 FILE NAME: c:\pwwork\pwwork\blake.bettis@illinois.gov\1105742\72441 Pln_Sht.dgn

USER NAME = blake.bettis	DESIGNED -	REVISED -
	DRAWN - BLAKE BETTIS	REVISED -
	CHECKED -	REVISED -
PLOT DATE = 1/28/2026	DATE - 11/3/2025	REVISED -

**STATE OF ILLINOIS
DEPARTMENT OF TRANSPORTATION**

PLAN SHEETS			
SCALE: 1"=50'	SHEET 3	OF 5 SHEETS	STA. 368+98.74 TO STA. 398+98.74

F.A.P. RTE.	SECTION	COUNTY	TOTAL SHEETS	SHEET NO.
320	134RS-11, 135RS-2	LOGAN	19	13
CONTRACT NO. 72441				
ILLINOIS FED. AID PROJECT				



MODEL: IL121E001-SE-IL-121-Plan 7 (Sheet)
 FILE NAME: c:\pwwork\blake.bettis@illinois.gov\1105742\72441 Pln_Sht.dgn

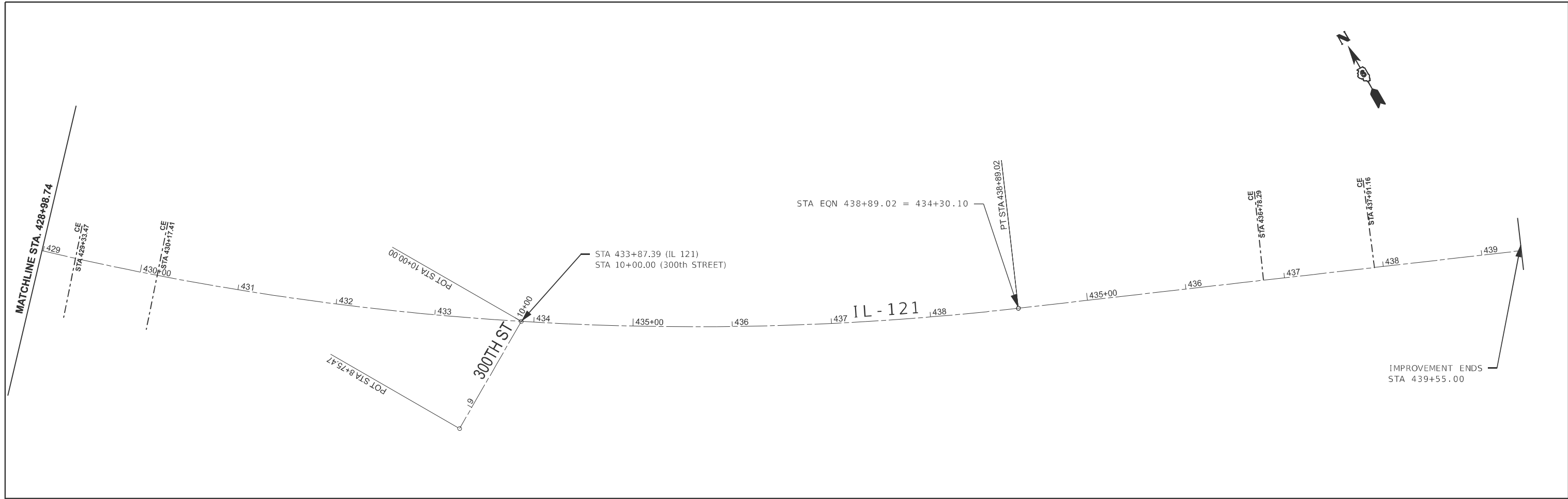
USER NAME = blake.bettis	DESIGNED -	REVISED -
	DRAWN - BLAKE BETTIS	REVISED -
	CHECKED -	REVISED -
PLOT DATE = 1/28/2026	DATE - 11/3/2025	REVISED -

**STATE OF ILLINOIS
DEPARTMENT OF TRANSPORTATION**

PLAN SHEETS

SCALE: 1"=50' SHEET 4 OF 5 SHEETS STA. 398+98.74 TO STA. 428+98.74

F.A.P. RTE.	SECTION	COUNTY	TOTAL SHEETS	SHEET NO.
320	134RS-11, 135RS-2	LOGAN	19	14
CONTRACT NO. 72441				
ILLINOIS FED. AID PROJECT				



MODEL: IL121E001-SE - IL 121 - Plan 9 (Sheet)
FILE NAME: c:\p\work\p\road\blake.bettis@illinois.gov\1105742\72441 Pln_Sht.dgn

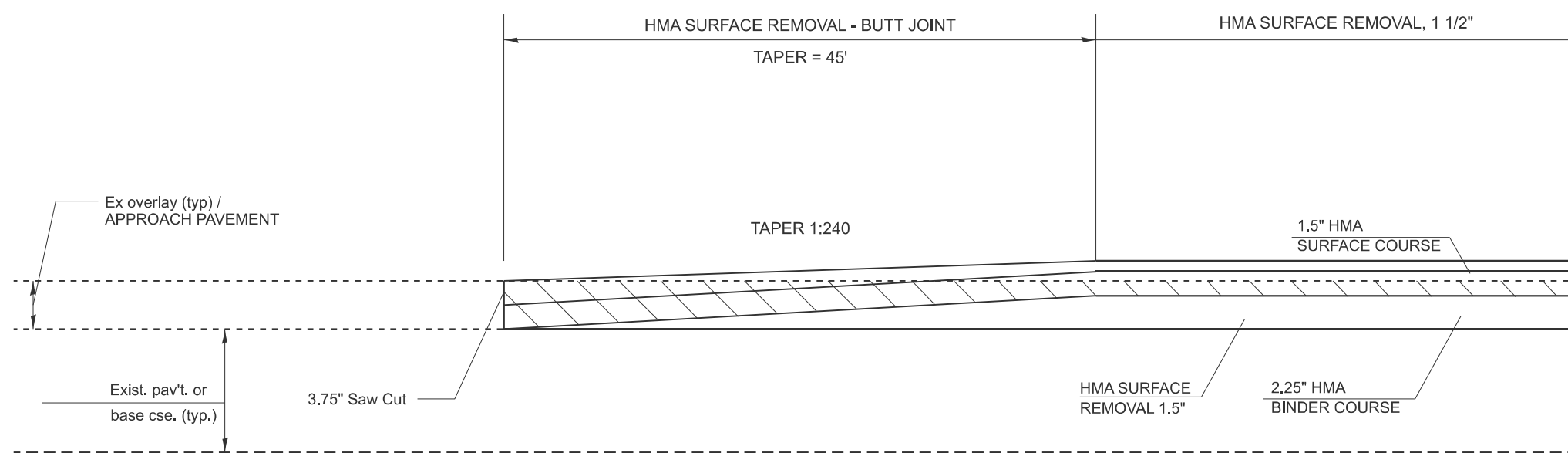
USER NAME = blake.bettis	DESIGNED -	REVISED -
	DRAWN - BLAKE BETTIS	REVISED -
	CHECKED -	REVISED -
PLOT DATE = 1/28/2026	DATE - 11/3/2025	REVISED -

**STATE OF ILLINOIS
DEPARTMENT OF TRANSPORTATION**

PLAN SHEETS

SCALE: SHEET 5 OF 5 SHEETS STA. TO STA.

F.A.P RTE.	SECTION	COUNTY	TOTAL SHEETS	SHEET NO.
320	134RS-11, 135RS-2	LOGAN	19	15
CONTRACT NO. 72441				
ILLINOIS FED. AID PROJECT				

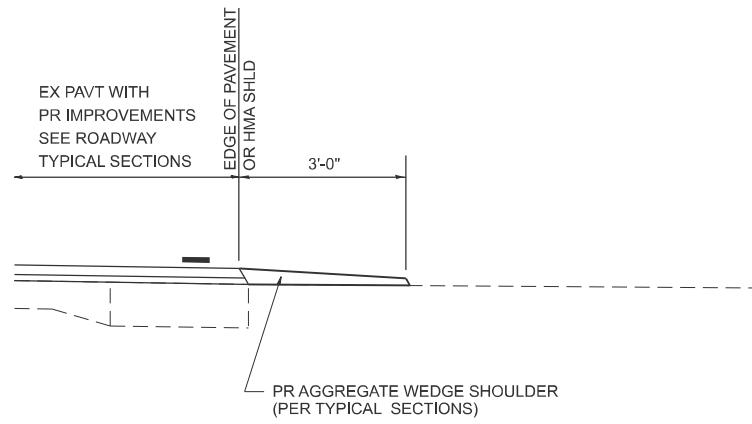


BUTT JOINT DETAIL A

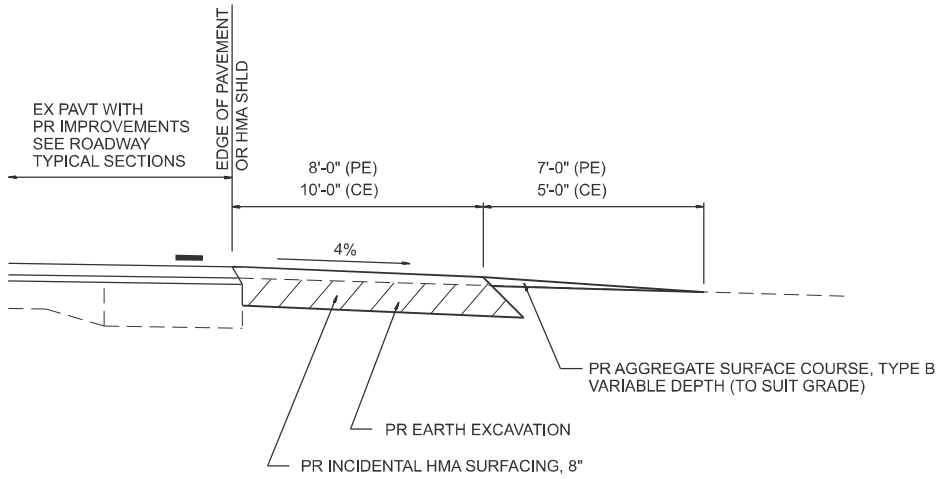
STA 310+87.00 - 311+32.00
 STA 439+10.00 - 439+55.00

MODEL: Butt Joint (Sheet)
 FILE NAME: c:\p\work\project\blake.bettis@illinois.gov\1105742\72441 DETAIL_SHT.dgn

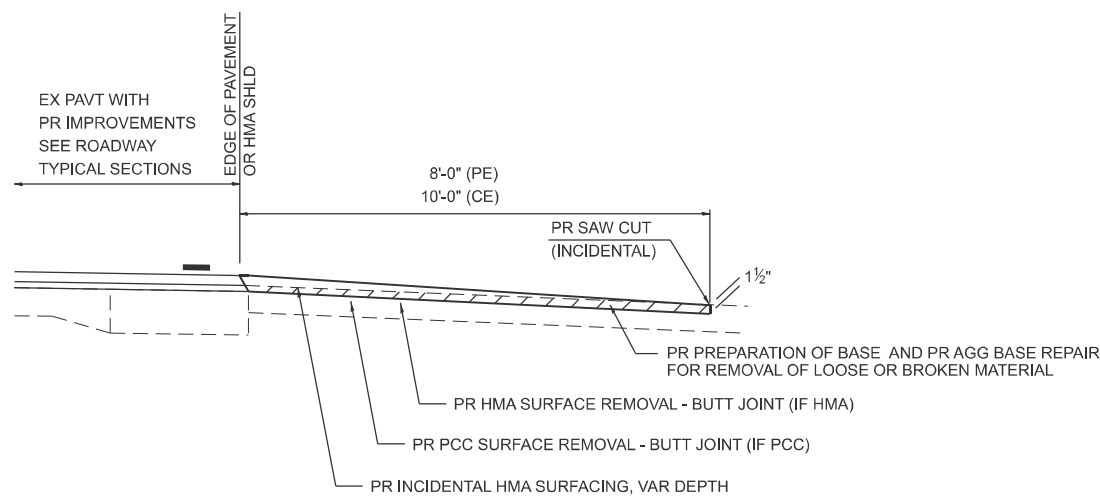
400-BUTTJT_RAMP_001	USER NAME = blake.bettis	DESIGNED -	REVISED -	STATE OF ILLINOIS DEPARTMENT OF TRANSPORTATION	BUTT JOINT & RAMP DETAIL			F.A.P. RTE.	SECTION	COUNTY	TOTAL SHEETS	SHEET NO.
		DRAWN - BLAKE BETTIS	REVISED -					320	134RS-11, 135RS-2	LOGAN	19	16
		CHECKED -	REVISED -		CONTRACT NO. 72441							
	PLOT DATE = 1/19/2026	DATE - 11/3/2025	REVISED -		SCALE:	SHEET 1	OF 4 SHEETS	STA.	TO STA.	ILLINOIS	FED. AID PROJECT	



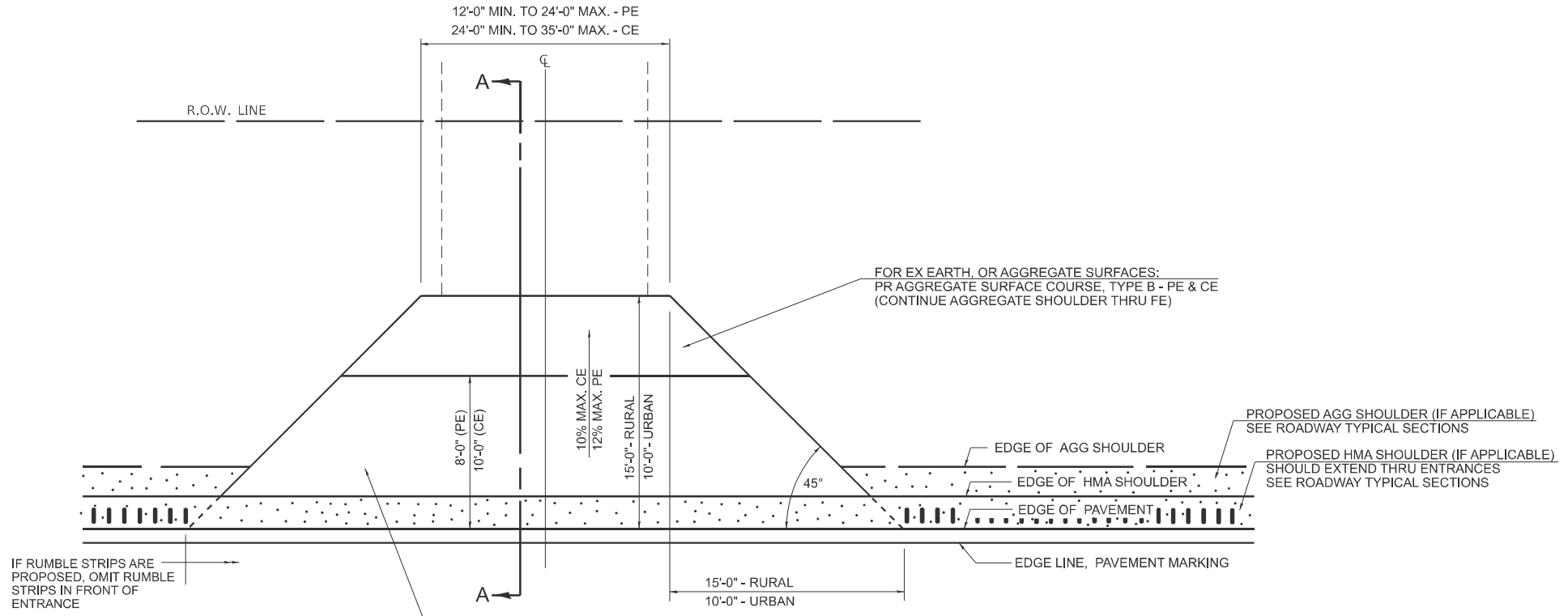
SECTION A-A FOR EX EARTH/ AGGREGATE FE



SECTION A-A FOR EX EARTH/AGGREGATE PE & CE



SECTION A-A FOR EX BITUMINOUS/ PC CONCRETE PE & CE



PLAN - ENTRANCE

FOR EX EARTH OR AGGREGATE SURFACES:
PR AGGREGATE SHOULDER THRU FE
PR INCIDENTAL HMA SURFACING, 8" (PE & CE)

FOR EX HMA CONCRETE SURFACES:
PR HMA SURFACE REMOVAL - BUTT JOINT

FOR EX PCC SURFACES:
PR PCC SURFACE REMOVAL - BUTT JOINT

FOR ENTRANCE LAYOUT DIMENSIONS AND SECTION A-A, REFER TO THE SCHEDULES IN THE PLANS

GENERAL NOTES:

THE RESIDENT ENGINEER WILL DETERMINE THE EXACT TYPE OF IMPROVEMENT TO BE COMPLETED FOR ALL ENTRANCES, SIDEROADS, AND MAILBOX TURNOUTS ON THIS PROJECT.

THE PLAN DETAILS AND SCHEDULES SHOULD BE USED AS A GUIDE FOR THE ENGINEER TO IMPLEMENT THE FINAL DESIGN. THE ENGINEER MAY DECIDE TO SALVAGE PORTIONS OF THE EXISTING ENTRANCE PAVEMENT STRUCTURE, THEREBY REDUCING PAY ITEM QUANTITIES. NO ADDITIONAL PAYMENT WILL BE ALLOWED FOR THIS REDUCTION IN QUANTITIES.

ANY WORK THE ENGINEER REQUIRES WHICH IS NOT COVERED BY A PAY ITEM CONTAINED IN THE PLANS WILL BE PAID FOR ACCORDING TO ARTICLE 109.04 OF THE STANDARD SPECIFICATIONS.

INCIDENTAL HMA SURFACING REQUIRED TO CONSTRUCT THE ENTRANCES SHALL BE PLACED ACCORDING TO THE APPLICABLE PORTIONS OF SECTION 406 AND 408 OF THE STANDARD SPECIFICATIONS AND AS DIRECTED BY THE ENGINEER.

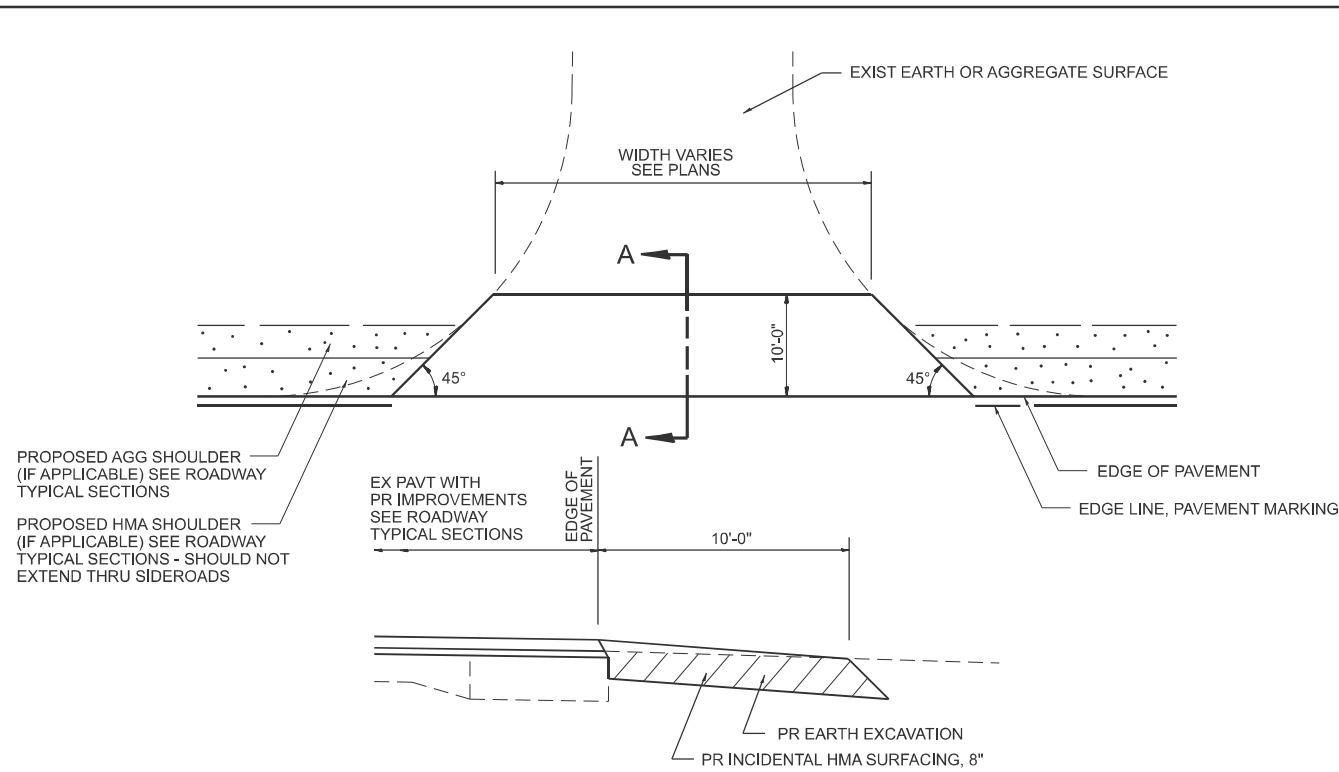
WHEN THE INCIDENTAL HMA SURFACING PROPOSED FOR THE IMPROVEMENT IS THICKER THAN 3 INCHES, THE CONTRACTOR WILL BE REQUIRED TO PLACE MORE THAN ONE LIFT. THE BOTTOM LIFT(S) SHALL MEET THE REQUIREMENTS OF HMA BASE COURSE IN SECTION 406 OF THE STANDARD SPECIFICATIONS AND THE TOP LIFT OF 1 1/2" INCHES SHALL MEET THE REQUIREMENTS OF HMA INCIDENTAL SURFACING.

THIS WORK WILL BE PAID FOR ACCORDING TO SECTIONS 351, 358, 408, 423 AND 440 OF THE STANDARD SPECIFICATIONS.

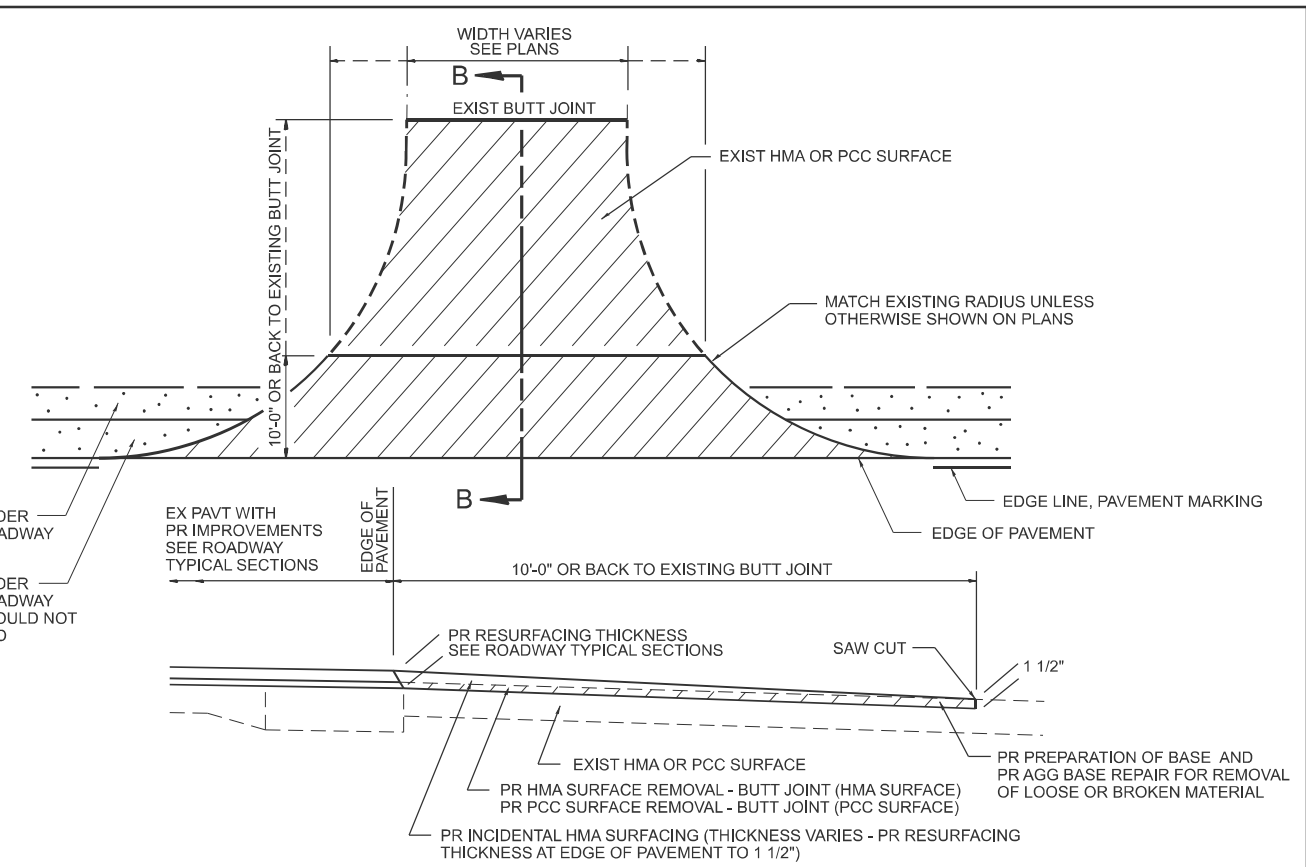
FOR SMART OVERLAYS (1 1/2" MILLING AND 1 1/2" RESURFACING PROJECTS), USE THE SAME STANDARDS AS SHOWN, OMITTING THE BINDER COURSE.

MODEL: Entrance_Detail [Sheet]
FILE NAME: c:\p\work\pav\105742\2441\DETAIL_SHT.dgn

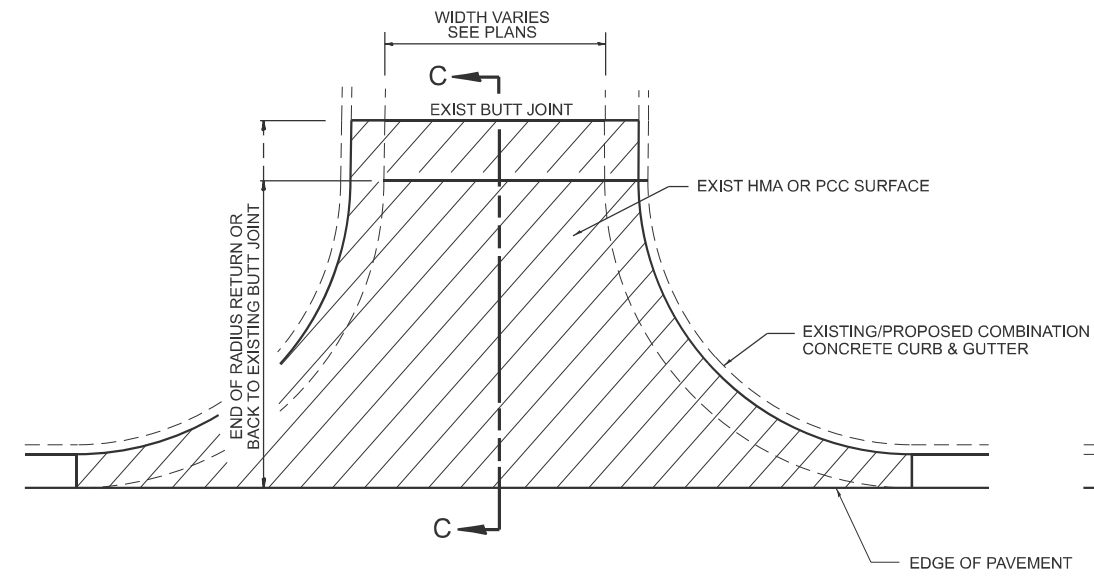
400-ENT-3P_001	USER NAME = blake.bettis	DESIGNED -	REVISED -	STATE OF ILLINOIS DEPARTMENT OF TRANSPORTATION	DIST. 6 DETAILS FOR RURAL/URBAN ENT. & MAILBOX TURNOUT W/O CONC. GUTTER (3P-PROJ.)	F.A.P. RTE.	SECTION	COUNTY	TOTAL SHEETS	SHEET NO.
	PLOT DATE = 1/19/2026	DRAWN - BLAKE BETTIS	REVISED -			320	134RS-11, 135RS-2	LOGAN	19	17
		CHECKED -	REVISED -			CONTRACT NO. 72441				
		DATE - 11/3/2025	REVISED -		SCALE:	SHEET 2	OF 4	SHEETS	STA.	TO STA.
										ILLINOIS FED. AID PROJECT



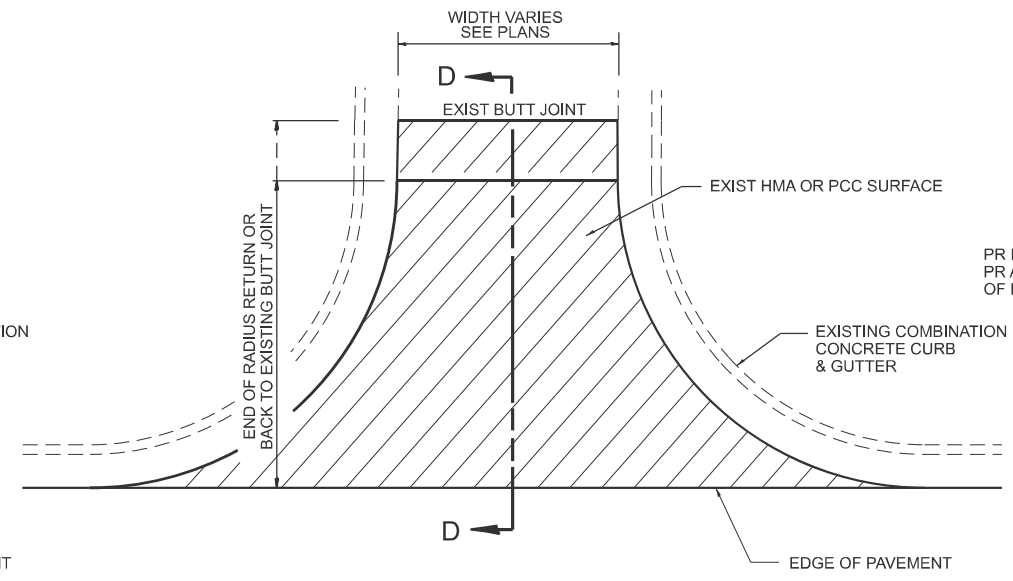
SECTION A-A
EXIST AGGREGATE SIDEROAD DETAIL
(NEW HMA APRON)



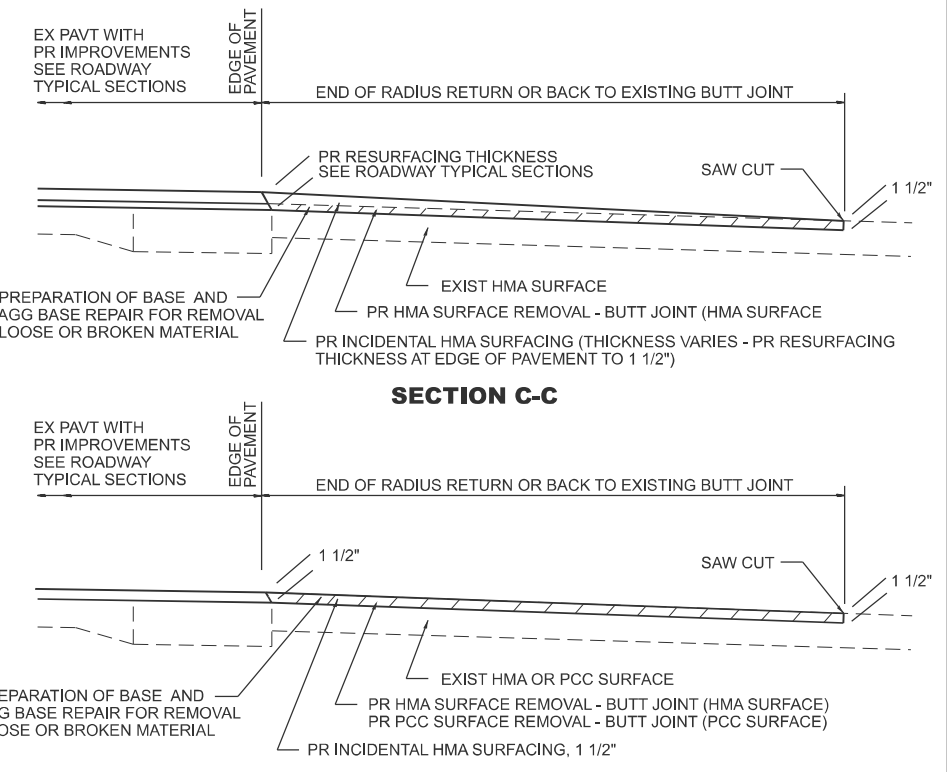
SECTION B-B
EXIST HMA OR PCC SIDEROAD DETAIL W/O CC&G (TO BE RESURFACED)



SECTION C-C
EXIST HMA SIDEROAD DETAIL W/CC&G
(TO BE RESURFACED)



SECTION D-D
EXIST HMA OR PCC SIDEROAD DETAIL W/CC&G
(TO BE RESURFACED - MILL AND FILL ONLY)



- NOTES:**
1. IF HMA SHOULDERS ARE PROPOSED, THEY SHOULD NOT EXTEND THROUGH SIDEROADS.
 2. THE COST OF SAW CUTS SHALL BE INCLUDED IN THE COST OF THE HMA SURFACE REMOVAL - BUTT JOINT OR PCC SURFACE REMOVAL - BUTT JOINT PAY ITEMS

MODEL: Sideroad_Detail (Sheet)
 FILE NAME: c:\p\work\wv\10574272441\DETAIL_SHT.dgn

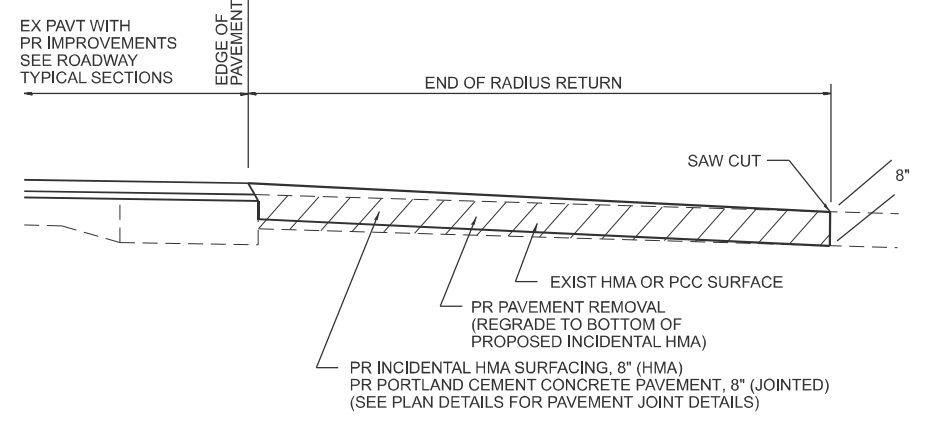
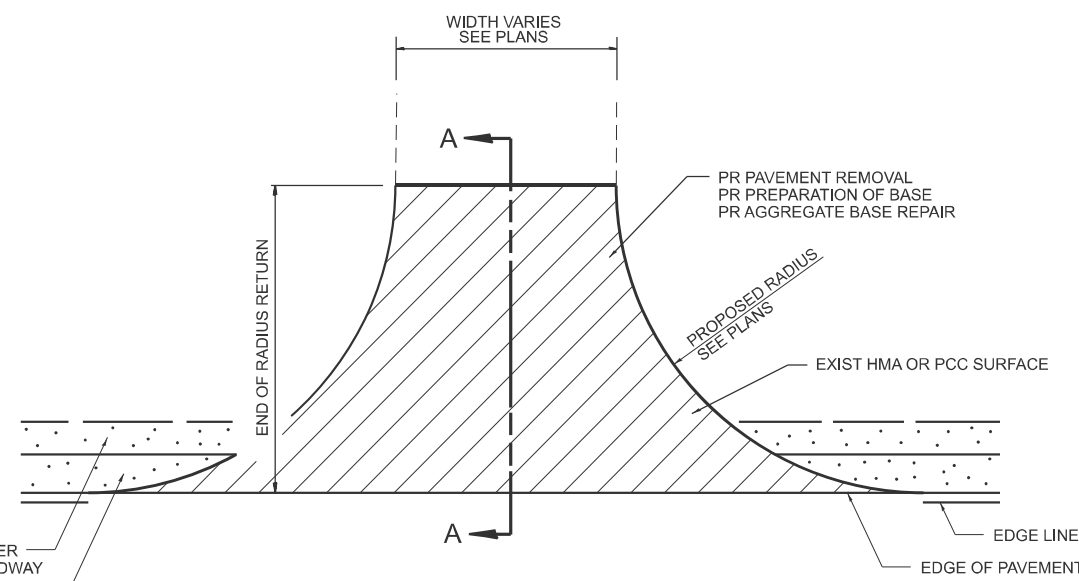
400 SIDERD_001	USER NAME = blake.bettis	DESIGNED -	REVISED -
		DRAWN - BLAKE BETTIS	REVISED -
		CHECKED -	REVISED -
	PLOT DATE = 1/19/2026	DATE - 11/3/2025	REVISED -

STATE OF ILLINOIS
DEPARTMENT OF TRANSPORTATION

DIST. 6 DETAILS FOR SIDEROADS (3P-PROJ.)
 SCALE: SHEET 3 OF 4 SHEETS STA. TO STA.

F.A.P. RTE.	SECTION	COUNTY	TOTAL SHEETS	SHEET NO.
320	134RS-11, 135RS-2	LOGAN	19	18
CONTRACT NO. 72441				
ILLINOIS FED. AID PROJECT				

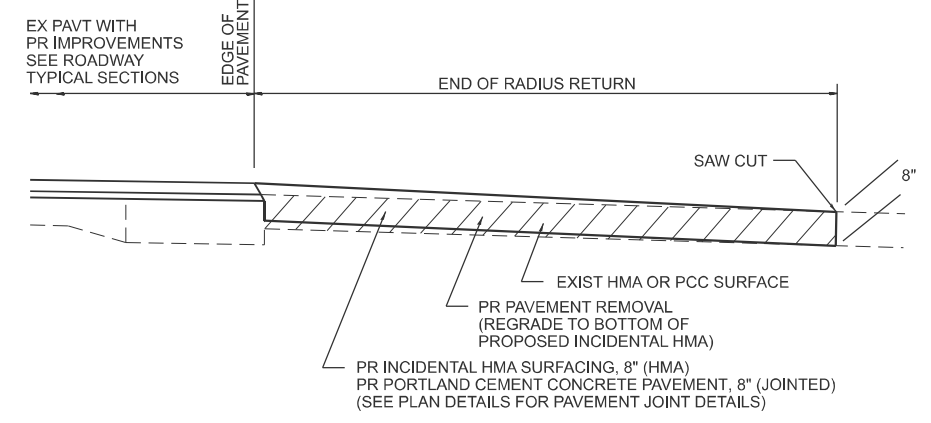
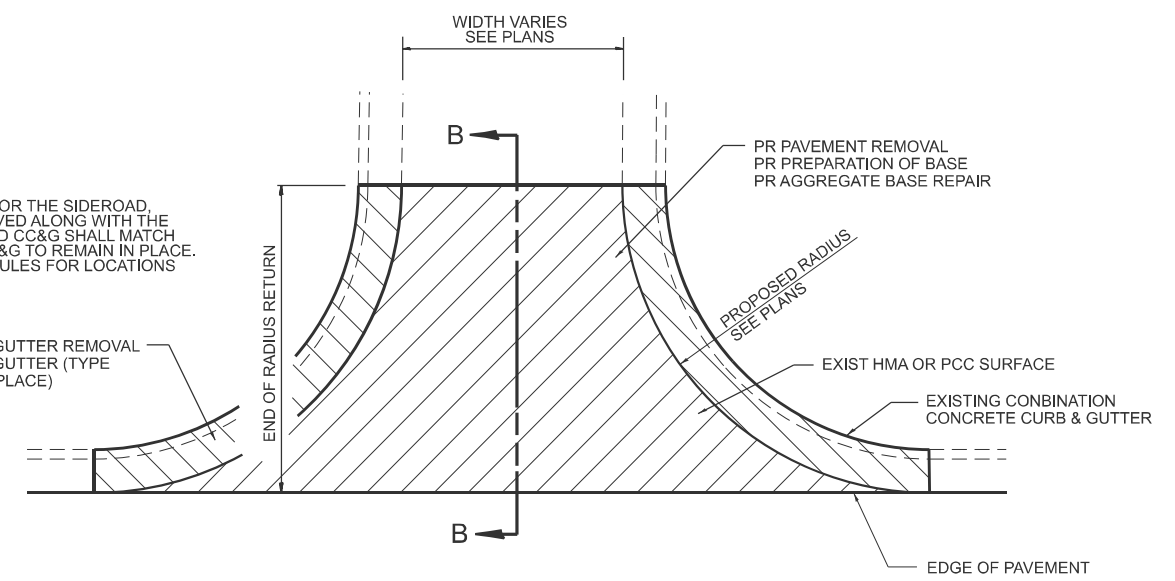
MODEL: Sideroad-detail 2 (Sheet)
 FILE NAME: c:\p\work\pav\blake.bettis@illinois.gov\1105742\72441\DETAIL_SHT.dgn



SECTION A-A
EXIST HMA OR PCC SIDEROAD DETAIL W/O CC&G (RECONSTRUCTION)

IF NEW RADII ARE PROPOSED FOR THE SIDEROAD, EXISTING CC&G WILL BE REMOVED ALONG WITH THE PAVEMENT, AND THE PROPOSED CC&G SHALL MATCH THE TYPE AND KIND OF THE CC&G TO REMAIN IN PLACE. SEE CURB AND GUTTER SCHEDULES FOR LOCATIONS AND QUANTITIES.

PR COMBINATION CURB AND GUTTER REMOVAL
 PR COMBINATION CURB AND GUTTER (TYPE SAME AS THAT TO REMAIN IN PLACE)



SECTION B-B
EXIST HMA OR PCC SIDEROAD DETAIL W/CC&G (RECONSTRUCTION)

- NOTES:**
1. IF HMA SHOULDERS ARE PROPOSED, THEY SHOULD NOT EXTEND THROUGH SIDEROADS.
 2. THE COST OF SAW CUTS SHALL BE INCLUDED IN THE COST OF THE REMOVAL ITEMS.

400-SIDERD_002	USER NAME = blake.bettis	DESIGNED -	REVISED -	STATE OF ILLINOIS DEPARTMENT OF TRANSPORTATION	DIST. 6 DETAILS FOR SIDEROADS (3R-PROJ.)	F.A.P. RTE.	SECTION	COUNTY	TOTAL SHEETS	SHEET NO.
	PLOT DATE = 1/19/2026	DRAWN - BLAKE BETTIS	REVISED -			320	134RS-11, 135RS-2	LOGAN	19	19
		CHECKED -	REVISED -			CONTRACT NO. 72441				
		DATE - 11/3/2025	REVISED -		SCALE:	SHEET 4	OF 4	SHEETS	STA.	TO STA.
									ILLINOIS	FED. AID PROJECT