

STATE OF ILLINOIS
DEPARTMENT OF TRANSPORTATION

F.A.S. RTE.	SECTION	COUNTY	TOTAL SHEETS	SHEET NO.
631	16DR	SANGAMON	6	1
		ILLINOIS	CONTRACT NO. 72503	

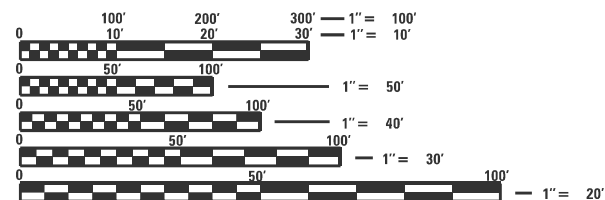
FOR INDEX OF SHEETS, SEE SHEET NO. 2

**PROPOSED
HIGHWAY PLANS**

**FAS ROUTE 631 (OLD US 36)
SECTION 16DR
PROJECT
DRAINAGE, DITCH CLEANING
SANGAMON COUNTY**

C-96-103-25

ADT = 1,700 (2022)
SU = 50 (2022)
MU = 80 (2022)

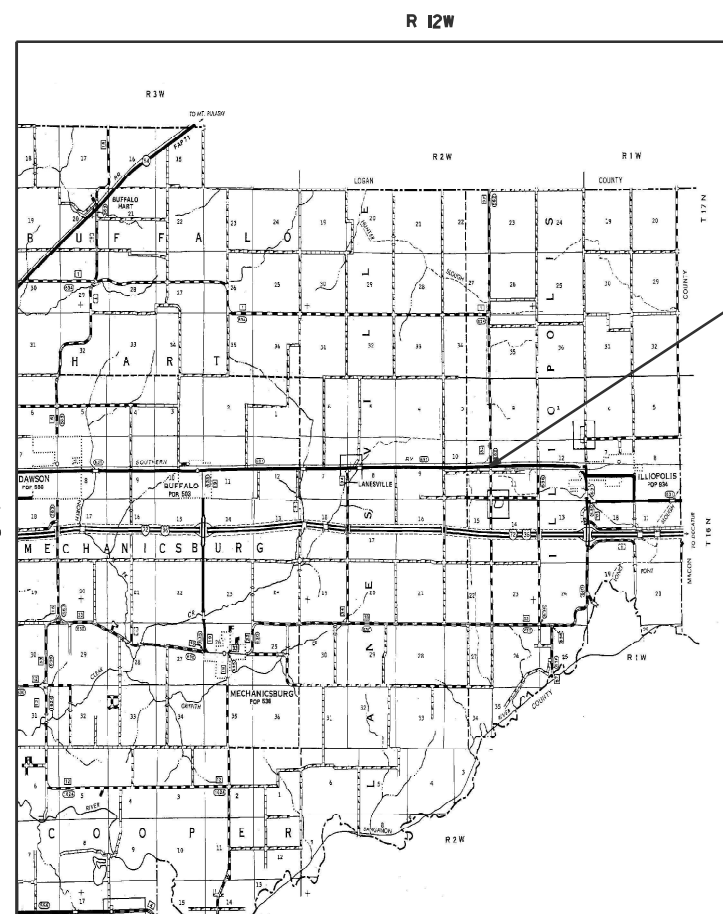


FULL SIZE PLANS HAVE BEEN PREPARED USING STANDARD ENGINEERING SCALES. REDUCED SIZED PLANS WILL NOT CONFORM TO STANDARD SCALES. IN MAKING MEASUREMENTS ON REDUCED PLANS, THE ABOVE SCALES MAY BE USED.

J.U.L.I.E.
JOINT UTILITY LOCATION INFORMATION FOR EXCAVATORS
1-800-892-0123
OR 811

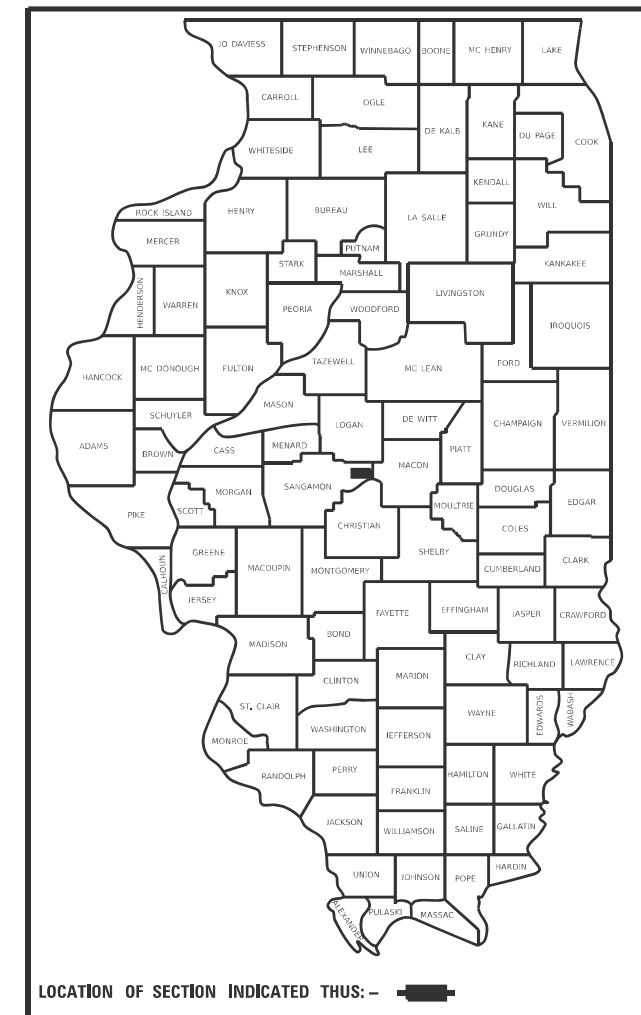
PROJECT ENGINEER: MIKE HAMBY (217)524-7765
PROJECT MANAGER TIM SHARP (217)524-9160

CONTRACT NO. 72503



PROJECT LOCATION

D-96-066-25



STATE OF ILLINOIS
DEPARTMENT OF TRANSPORTATION

SUBMITTED February 4, 2026
Teresa C. Price
REGIONAL ENGINEER

March 20, 2026
[Signature]
ENGINEER OF DESIGN AND ENVIRONMENT

March 20, 2026
[Signature]
DIRECTOR OF HIGHWAYS PROJECT IMPLEMENTATION

**PRINTED BY THE AUTHORITY
OF THE STATE OF ILLINOIS**

INDEX OF SHEETS

SHEET NO.	DESCRIPTION
1.	COVER SHEET
2.	INDEX OF SHEETS, STANDARDS, GENERAL NOTES & SIGNATURES
3.	SUMMARY OF QUANTITIES
4.	SCHEDULES
5.	LOCATION MAP
6.	PLANS

STANDARDS

STANDARD NO.	DESCRIPTION
701001-02	OFF-RD OPERATIONS, 2L, 2W, MORE THAN 15' AWAY
701006-05	OFF-RD OPERATIONS, 2L, 2W, 15' TO 24" FROM PAVEMENT EDGE
701201-05	LANE CLOSURE, 2L, 2W, DAY ONLY, FOR SPEEDS > 45 MPH
701306-04	LANE CLOSURE, 2L, 2W, DAY ONLY, SLOW MOVING OPERATIONS DAY ONLY FOR SPEEDS > 45 MPH
701901-11	TRAFFIC CONTROL DEVICES

STATE OF ILLINOIS DEPARTMENT OF TRANSPORTATION DIVISION OF HIGHWAYS DISTRICT 6	
EXAMINED	February 6, 2026 <i>J. C. DeLeon</i> ENGINEER OF OPERATIONS
EXAMINED	February 6, 2026 <i>R. P. Smith</i> ENGINEER OF PROJECT IMPLEMENTATION
EXAMINED	February 6, 2026 <i>M. V.</i> ENGINEER OF PROGRAM DEVELOPMENT

Only the District 6 engineer assigned to the project, the RE or RT, will move the signals to manual flash condition and return the signals to "normal" operation. This shall not be delegated. In doing so, the RE or RT will have full responsibility for function of those signals and any issue that may arise from his/her actions.

The RE or RT shall notify by email:

brion.fry@illinois.gov, dale.hebenstreit@illinois.gov, or michael.hamby@illinois.gov at least the day prior to the planned traffic signal flash condition.

The contractor shall not have access to the signal cabinet.

If you have any questions or require additional information, please call Michael Hamby at 217-556-4643.

REV - MS

MODEL: D:\draft\...
FILE NAME: ...

USER NAME = Timothy.Sharp	DESIGNED -	REVISED -
	DRAWN -	REVISED -
PLOT SCALE = \$SCALE\$	CHECKED -	REVISED -
PLOT DATE = 2/4/2026	DATE -	REVISED -

STATE OF ILLINOIS
DEPARTMENT OF TRANSPORTATION

INDEX OF SHEETS, HIGHWAY STANDARDS,
GENERAL NOTES, & SIGNATURES

SCALE: SHEET OF SHEETS STA. TO STA.

F.A.S. RTE.	SECTION	COUNTY	TOTAL SHEETS	SHEET NO.
631	16DR	SANGAMON	6	2
CONTRACT NO. 72503				
ILLINOIS FED. AID PROJECT				

0-02180-6005
CONSTR. CODE
100% STATE
SANGAMON
ROADWAY
0004
RURAL

CODE NO.	ITEM	UNIT	TOTAL QUANTITY	
20200100	EARTH EXCAVATION	CU YD	50	50
20800150	TRENCH BACKFILL	CU YD	40	40
21400100	GRADING AND SHAPING DITCHES	FOOT	950	950
40201000	AGGREGATE FOR TEMPORARY ACESS	TON	93	93
44200206	PAVEMENT PATCHING, TYPE IV, 17 INCH	SQ YD	93	93
50100100	REMOVAL OF EXISTING STRUCTURE	EACH	1	1
542A1060	PIPE CULVERTS, CLASS A, TYPE 2 15"	FOOT	97	97
54213660	PRECAST REINFORCED FLARED END SECIONS 15"	EACH	2	2
67100100	MOBILIZATION	L SUM	1	1
70100450	TRAFFIC CONTROL AND PROTECTION, STANDARD 701201	L SUM	1	1
70100460	TRAFFIC CONTROL AND PROTECTION, STANDARD 701306	L SUM	1	1
70107025	CHANGEABLE MESSAGE SIGN	CA DAY	30	30
X6331009	REMOVE AND REPLACE STEEL PLATE BEAM GUARDRAIL (SPECIAL)	FOOT	5	5
X7200053	REMOVE, STORE AND RE-ERECT SIGN PANEL (SPECIAL)	EACH	2	2
Z0048665	RAILROAD PROTECTIVE LIABILITY INSURANCE	L SUM	1	1

FILE NAME =	USER NAME = Timothy.Sharp	DESIGNED -	REVISED -
pw://idot-pw.bentley.com/PWIDOT/Documents/IDOT Offices/District 6/ORD Projects/72503/Drawings/CAD sheets/01503-sh1-3-500.dgn		CHECKED -	REVISED -
Default	PLOT DATE = 2/4/2026	DATE -	REVISED -

STATE OF ILLINOIS
DEPARTMENT OF TRANSPORTATION

SUMMARY OF QUANTITIES

SCALE: SHEET OF SHEETS STA. TO STA.

F.A.S. RTE.	SECTION	COUNTY	TOTAL SHEETS	SHEET NO.
63	16DR	SANGAMON	6	3
			CONTRACT NO. 72503	
ILLINOIS FED. AID PROJECT				

GRADING AND SHAPING DITCHES		
BEGIN STA.	END STA.	FOOT
466+00.00	475+50.00	950.00
TOTAL		950.00

MODEL: D:\draft
FILE NAME: p:\illinois\aw_bentley.com\PWD\DOT\Documents\DOT_0_csa\District_6\GRD_Project\72503\CAD\Drawings\72503-11t-4schedules.dgn

USER NAME = Timothy,Sharp	DESIGNED -	REVISED -
	DRAWN -	REVISED -
PLOT SCALE = \$SCALE\$	CHECKED -	REVISED -
PLOT DATE = 1/23/2026	DATE -	REVISED -

**STATE OF ILLINOIS
DEPARTMENT OF TRANSPORTATION**

SCHEDULES

SCALE: SHEET OF SHEETS STA. TO STA.

F.A.S. RTE.	SECTION	COUNTY	TOTAL SHEETS	SHEET NO.
631	16DR	SANGAMON	6	4
CONTRACT NO. 72503				
ILLINOIS			FED. AID PROJECT	



MODEL: D:\draft
 FILE NAME: p:\ilhs-caw-bentley.com\PROJECTS\DOT\O_csr\District_6080\Project\72503\CAD\Draw\CAD\sheet\72503-ht5-location_map.dwg

USER NAME = Timothy,Sharp	DESIGNED -	REVISED -
	DRAWN -	REVISED -
PLOT SCALE = \$SCALE\$	CHECKED -	REVISED -
PLOT DATE = 1/23/2026	DATE -	REVISED -

STATE OF ILLINOIS
DEPARTMENT OF TRANSPORTATION

LOCATION MAP

SCALE: SHEET OF SHEETS STA. TO STA.

F.A.S. RTE.	SECTION	COUNTY	TOTAL SHEETS	SHEET NO.
631	16DR	SANGAMON	6	5
CONTRACT NO. 72503				
ILLINOIS FED. AID PROJECT				

EXIST. STRUCTURE TO BE REMOVED,
(EXACT SIZE AND LENGTH ARE UNKNOWN)

STA. 465+30
END OF PIPE
43.5' LT
FL ELE 600.19

PROP. PIPE CULVERTS,
CLASS A, TYPE 2 15"

466+00

OLD US 36

PROP. SHAPING AND GRADING
OF DITCH FROM STA. 466+00
TO STA. 475+50

STA. 466+17
END OF PIPE
43.5' LT
FL EL 599.90

13'-0"

STA. 10+00.00 MT. PULASKI RD=
STA. 465+81.39 OLD US 36

NOTES:

CONTRACT IS RESPONSIBLE FOR REMOVAL
AND REPLACEMENT OF EXIST. STEEL
PLATE BEAM GUARDRAIL.

PROP. PRECAST REINFORCED
FLARED END SECTIONS 15"

CONTRACTOR IS RESPONSIBLE FOR REMOVE,
STORE AND RE-ERECT STOP SIGNS.

CL
MT. PULASKIRD

PROP. PRECAST
REINFORCED FLARED
END SECTION 15"

FL 599.90

FL 600.19

PROP. PAVEMENT
PATCHING, TY. IV, 10 INCH

CONTRACTOR IS REponsIBLE FOR VISITING JOB SITE
TO VERIFY LOCATIONS OF GUARDRAIL, UTILITY POLES,
R.R. SIGNALS AND STOP SIGNS, PRIOR TO BIDDING
ON PROJECT.

MODEL: D:\draft
FILE NAME: p:\illinois\work\projects\DOT_0_csa\District_6\ORRD_Projects\72503\CAD\Drawings\72503-116-6-plans.dwg

USER NAME = Timothy.Sharp	DESIGNED -	REVISED -
	DRAWN -	REVISED -
PLOT SCALE = \$SCALE\$	CHECKED -	REVISED -
PLOT DATE = 2/4/2026	DATE -	REVISED -

STATE OF ILLINOIS
DEPARTMENT OF TRANSPORTATION

PLAN LOCATION #1

SCALE: SHEET OF SHEETS STA. TO STA.

F.A.S. RTE.	SECTION	COUNTY	TOTAL SHEETS	SHEET NO.
631	16DR	SANGAMON	6	6
ILLINOIS FED. AID PROJECT			CONTRACT NO. 72741	