

STATE OF ILLINOIS  
DEPARTMENT OF TRANSPORTATION

| F.A.S. RTE. | SECTION    | COUNTY   | TOTAL SHEETS       | SHEET NO. |
|-------------|------------|----------|--------------------|-----------|
| 1597        | (14B-2)BDR | PIKE     | 7                  | 1         |
|             |            | ILLINOIS | CONTRACT NO. 72511 |           |

FOR INDEX OF SHEETS, SEE SHEET NO. 2

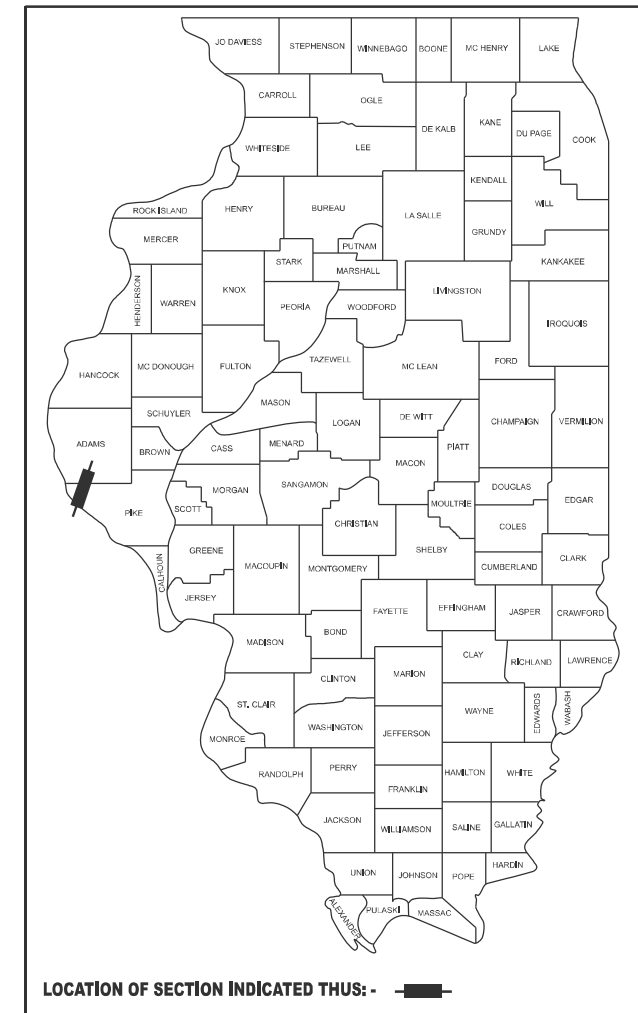


**PROPOSED  
HIGHWAY PLANS**

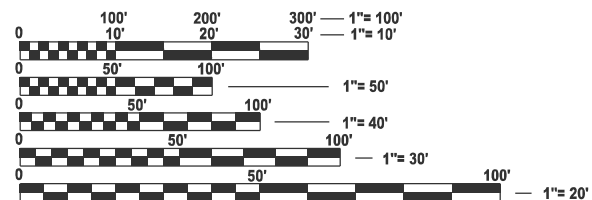
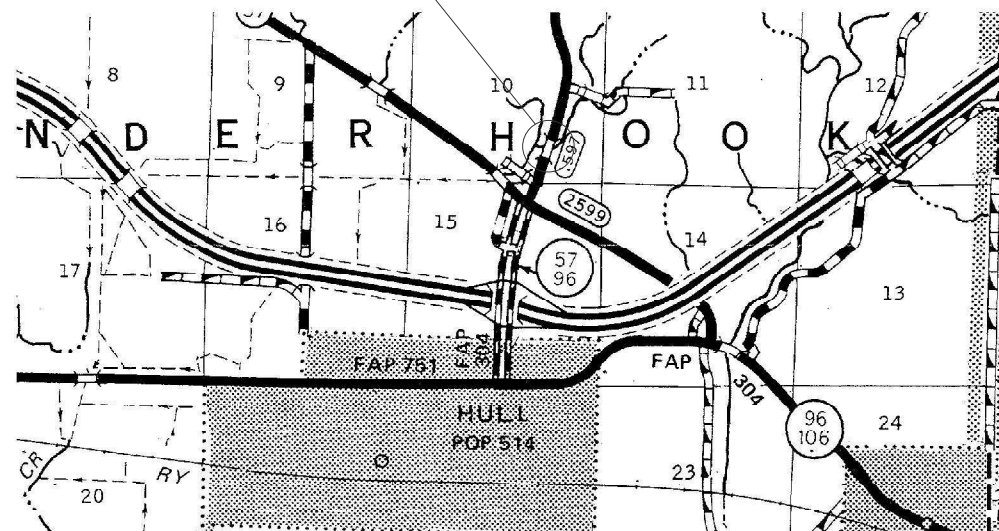
FAS ROUTE 1597 (IL 96)  
SECTION (14B-2)BDR  
PROJECT (STATE ONLY)  
BRIDGE PATCHING  
PIKE COUNTY

C-96-031-26

D-96-006-26



SN 075-0139  
IL 96 OVER  
WALNUT CREEK  
0.8 MI N of I-72 AT  
HULL INTCHG



FULL SIZE PLANS HAVE BEEN PREPARED USING STANDARD ENGINEERING SCALES. REDUCED SIZED PLANS WILL NOT CONFORM TO STANDARD SCALES. IN MAKING MEASUREMENTS ON REDUCED PLANS, THE ABOVE SCALES MAY BE USED.

J.U.L.I.E.  
JOINT UTILITY LOCATION INFORMATION FOR EXCAVATION  
1-800-892-0123  
OR 811

PROJECT ENGINEER: BRANDON DUDLEY (217) 785-9290  
PROJECT MANAGER: ZACHARY SPECHT

CONTRACT NO. 72511

GROSS LENGTH = 70.00 FT. = 0.01 MILE  
NET LENGTH = 70.00 FT. = 0.01 MILE

STATE OF ILLINOIS  
DEPARTMENT OF TRANSPORTATION

SUBMITTED January 26 20 26  
*Teresa C. Price*  
REGIONAL ENGINEER

March 20 20 26  
*[Signature]*  
ENGINEER OF DESIGN AND ENVIRONMENT

March 20 20 26  
*[Signature]*  
DIRECTOR OF HIGHWAYS PROJECT IMPLEMENTATION

**PRINTED BY THE AUTHORITY  
OF THE STATE OF ILLINOIS**

INDEX OF SHEETS

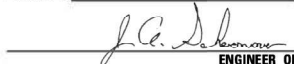


- 1 COVER SHEET
- 2 INDEX, STANDARDS, GENERAL NOTES, SIGNATURES, & SCHEDULES
- 3 SUMMARY OF QUANTITIES
- 4-5 TRAFFIC CONTROL DETAILS
- 6-7 BRIDGE PLANS, SN 075-0139

HIGHWAY STANDARDS

- 000001-09
- 001001-02
- 001006
- 701001-02
- 701006-05
- 701301-04
- 701316-14
- 701901-11
- 780001-05

GENERAL NOTES:

CONTACT JASON JONES, TRAFFIC OPERATIONS ENGINEER, 2 WEEKS PRIOR TO THE EXPECTED COMPLETION DATE TO SCHEDULE PAVEMENT MARKING MAINTENANCE.

|   |                   |
|---|-------------------|
| <b>STATE OF ILLINOIS<br/>DEPARTMENT OF TRANSPORTATION<br/>DIVISION OF HIGHWAYS<br/>DISTRICT 6</b>                           |                   |
| EXAMINED  | January 25, 20 26 |
| <br>ENGINEER OF OPERATIONS             |                   |
| EXAMINED  | January 22, 20 26 |
| <br>ENGINEER OF PROJECT IMPLEMENTATION |                   |
| EXAMINED  | January 26, 20 26 |
| <br>ENGINEER OF PROGRAM DEVELOPMENT    |                   |

MODEL: index-1 [Sheet]  
FILE NAME: c:\p\work\pwr\illinois.gov\_zachary.specht\illinois.gov\1161613000\_72511 File Creation Template\72511\_plansheet.dgn

|  |                            |            |           |   |   |                    |            |        |                 |              |         |
|--|----------------------------|------------|-----------|---|---|--------------------|------------|--------|-----------------|--------------|---------|
|  | USER NAME = zachary.specht | DESIGNED - | REVISED - | <b>STATE OF ILLINOIS<br/>DEPARTMENT OF TRANSPORTATION</b> | <b>INDEX OF SHEETS, HIGHWAY STANDARDS<br/>GENERAL NOTES, &amp; SIGNATURES</b> | F.A.S<br>RTE.      | SECTION    | COUNTY | TOTAL<br>SHEETS | SHEET<br>NO. |         |
|  |                            | DRAWN -    | REVISED - |   |   | 1597               | (14B-2)BDR | PIKE   | 7               | 2            |         |
|  |                            | CHECKED -  | REVISED - |   |   | CONTRACT NO. 72511 |            |        |                 |              |         |
|  | PLOT DATE = 1/26/2026      | DATE -     | REVISED - |   |   | SCALE:             | SHEET 1    | OF 1   | SHEETS          | STA.         | TO STA. |

0-02180-6019  
 SN 075-0139  
 100% STATE

| CODE NO. | ITEM  | UNIT   | TOTAL QUANTITY | BRIDGE     |
|----------|---|--------|----------------|------------|
|          |   |        |                | 0047 RURAL |
| 50300300 | PROTECTIVE COAT                                 | SQ YD  | 78             | 78         |
| 53016000 | DECK SLAB REPAIR (PARTIAL)                      | SQ YD  | 51             | 51         |
| 53016002 | DECK SLAB REPAIR (FULL DEPTH, TYPE II)          | SQ YD  | 15             | 15         |
| 67100100 | MOBILIZATION                                    | L SUM  | 1              | 1          |
| 70100100 | TRAFFIC CONTROL AND PROTECTION, STANDARD 701316 | EACH   | 1              | 1          |
| 70106500 | TEMPORARY BRIDGE TRAFFIC SIGNALS                | EACH   | 1              | 1          |
| 70106700 | TEMPORARY RUMBLE STRIPS                         | EACH   | 6              | 6          |
| 70107005 | PAVEMENT MARKING BLACKOUT TAPE, 5"              | FOOT   | 900            | 900        |
| 70107025 | CHANGEABLE MESSAGE SIGN                         | CAL DA | 90             | 90         |
| 70300150 | SHORT TERM PAVEMENT MARKING REMOVAL             | SQ FT  | 400            | 400        |
| X7200201 | WIDTH RESTRICTION SIGNING                       | L SUM  | 1              | 1          |
| Z0001800 | APPROACH SLAB REPAIR (PARTIAL DEPTH)            | SQ YD  | 12             | 12         |
| Z0012500 | CONCRETE CURB REPAIR                            | FOOT   | 39             | 39         |
| Z0032500 | JOINT SEALING (PATCHES)                         | FOOT   | 1,000          | 1,000      |

MODEL: SOQ (Sheet)  
 FILE NAME: c:\p\work\pwr\illinois.gov\_zachary.specht@illinois.gov\1161613000\_72511 File Creation Template\template\72511\_plansheet.dgn

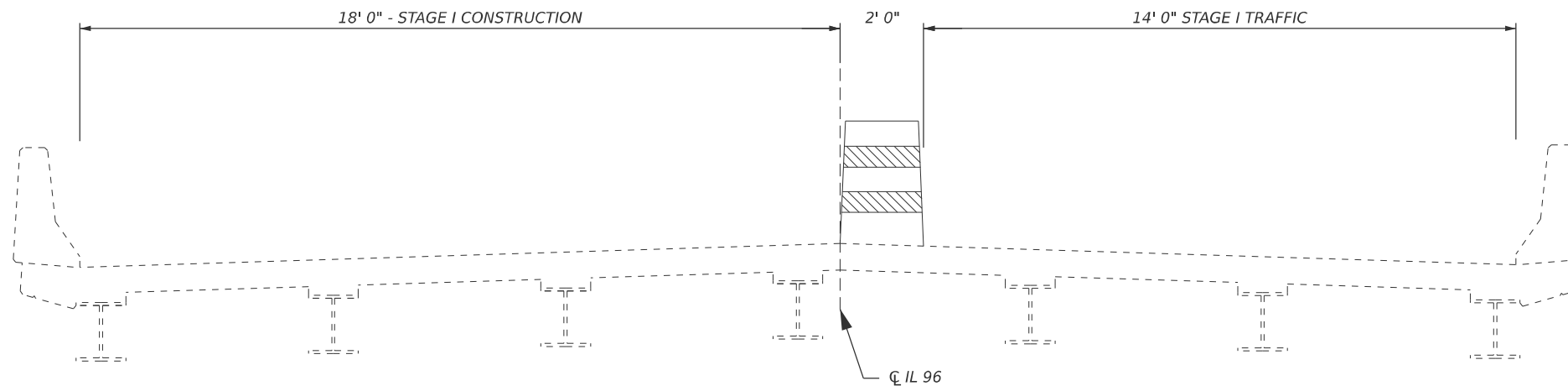
|                            |            |           |
|----------------------------|------------|-----------|
| USER NAME = zachary.specht | DESIGNED - | REVISED - |
|                            | DRAWN -    | REVISED - |
|                            | CHECKED -  | REVISED - |
| PLOT DATE = 1/5/2026       | DATE -     | REVISED - |

**STATE OF ILLINOIS  
 DEPARTMENT OF TRANSPORTATION**

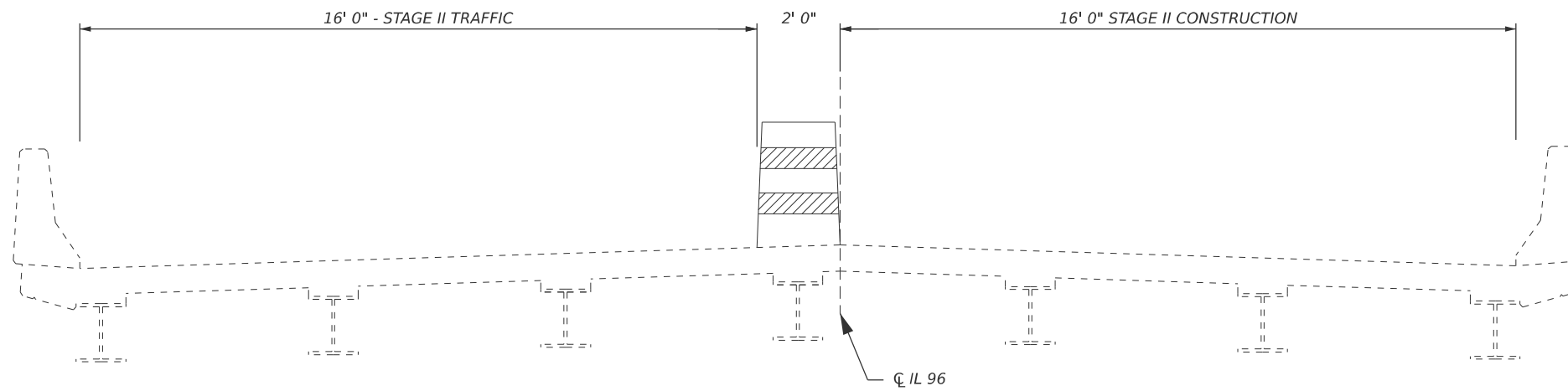
**SUMMARY OF QUANTITIES**

SCALE: SHEET 1 OF 1 SHEETS STA. TO STA.

| F.A.S RTE.                | SECTION    | COUNTY | TOTAL SHEETS | SHEET NO. |
|---------------------------|------------|--------|--------------|-----------|
| 1597                      | (14B-2)BDR | PIKE   | 7            | 3         |
| CONTRACT NO. 72511        |            |        |              |           |
| ILLINOIS FED. AID PROJECT |            |        |              |           |



**STAGE I TRAFFIC CROSS SECTION  
(LOOKING NORTH)**



**STAGE II TRAFFIC CROSS SECTION  
(LOOKING NORTH)**

MODEL: TC (Sheet)  
FILE NAME: c:\p\work\wis\illinois.gov\_zachary.specht@illinois.gov\1167613000\_72511 File Creation Template\72511\_plansheet.dgn

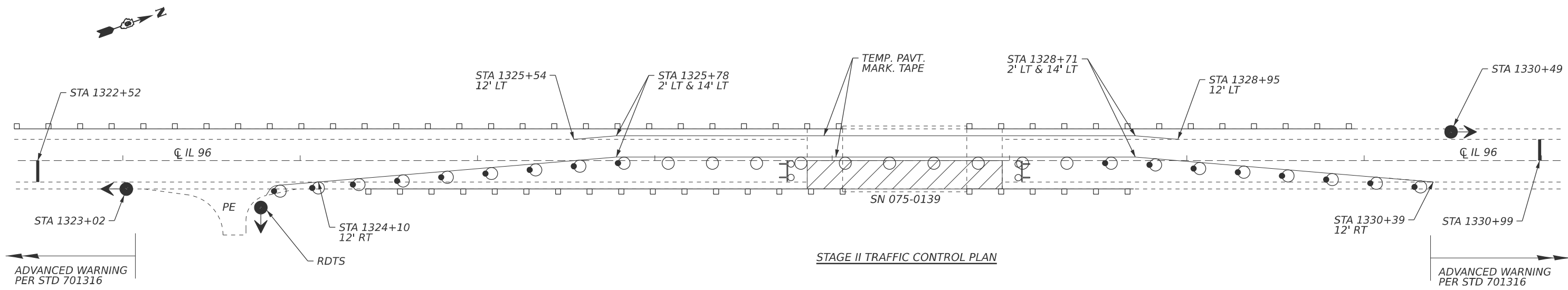
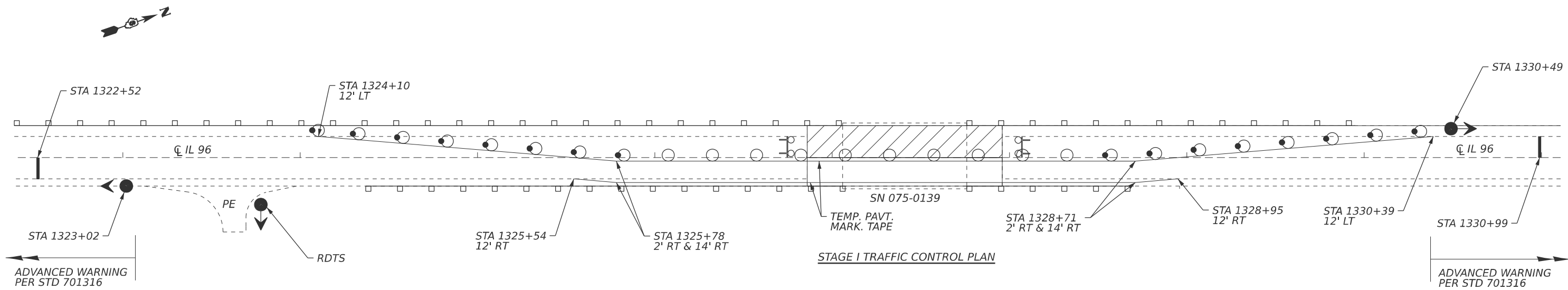
|                            |            |           |
|----------------------------|------------|-----------|
| USER NAME = zachary.specht | DESIGNED - | REVISED - |
|                            | DRAWN -    | REVISED - |
|                            | CHECKED -  | REVISED - |
| PLOT DATE = 1/5/2026       | DATE -     | REVISED - |

**STATE OF ILLINOIS  
DEPARTMENT OF TRANSPORTATION**






**TYPICAL TRAFFIC STAGING DETAIL**

SCALE: SHEET 1 OF 2 SHEETS STA. TO STA.

| F.A.S. RTE.               | SECTION    | COUNTY | TOTAL SHEETS | SHEET NO. |
|---------------------------|------------|--------|--------------|-----------|
| 1597                      | (14B-2)BDR | PIKE   | 7            | 4         |
| CONTRACT NO. 72511        |            |        |              |           |
| ILLINOIS FED. AID PROJECT |            |        |              |           |



**SYMBOLS**

-  WORK AREA
-  DRUM WITH STEADY BURN BI-DIRECTIONAL LIGHT
-  DRUM
-  TRAFFIC SIGNAL
-  TYPE III BARRICADE WITH FLASHING LIGHTS

**TRAFFIC CONTROL NOTES:**

1. Traffic control devices not shown in this detail shall be per standard 701316. Devices and temporary pavement markings shown in this detail shall be included in the cost of TRAFFIC CONTROL AND PROTECTION, STANDARD 701316. Temporary rumble strips and temporary traffic signals shall be paid separately.
2. A Residential Driveway Temporary Signal (RDTS) shall be provided for the private entrance at STA 1323±63 RT, cost included with TEMPORARY BRIDGE TRAFFIC SIGNALS. See special provisions.

MODEL: TC-1 (Sheet)  
FILE NAME: c:\p\work\project\illinois.gov\_zachary.specht\illinois.gov\1161613000\_72511 File Creation Template\72511 plansheet.dgn

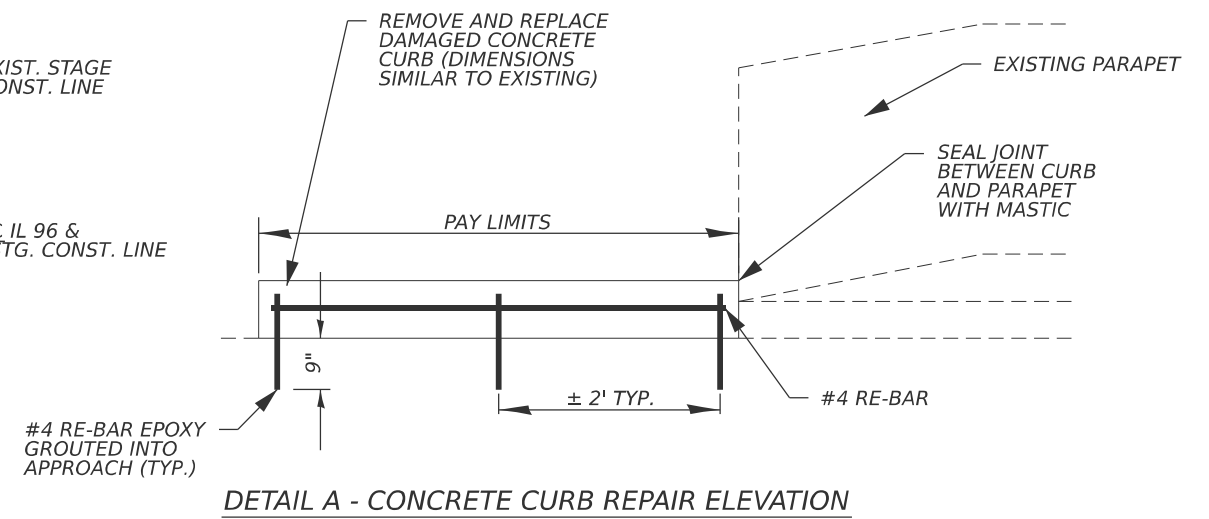
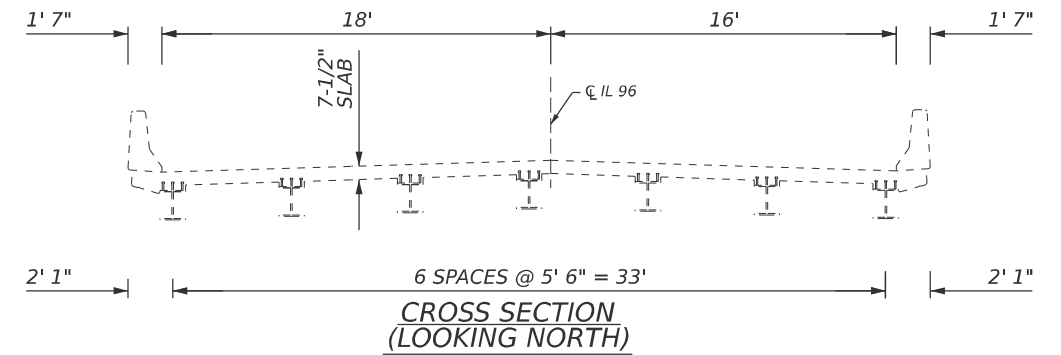
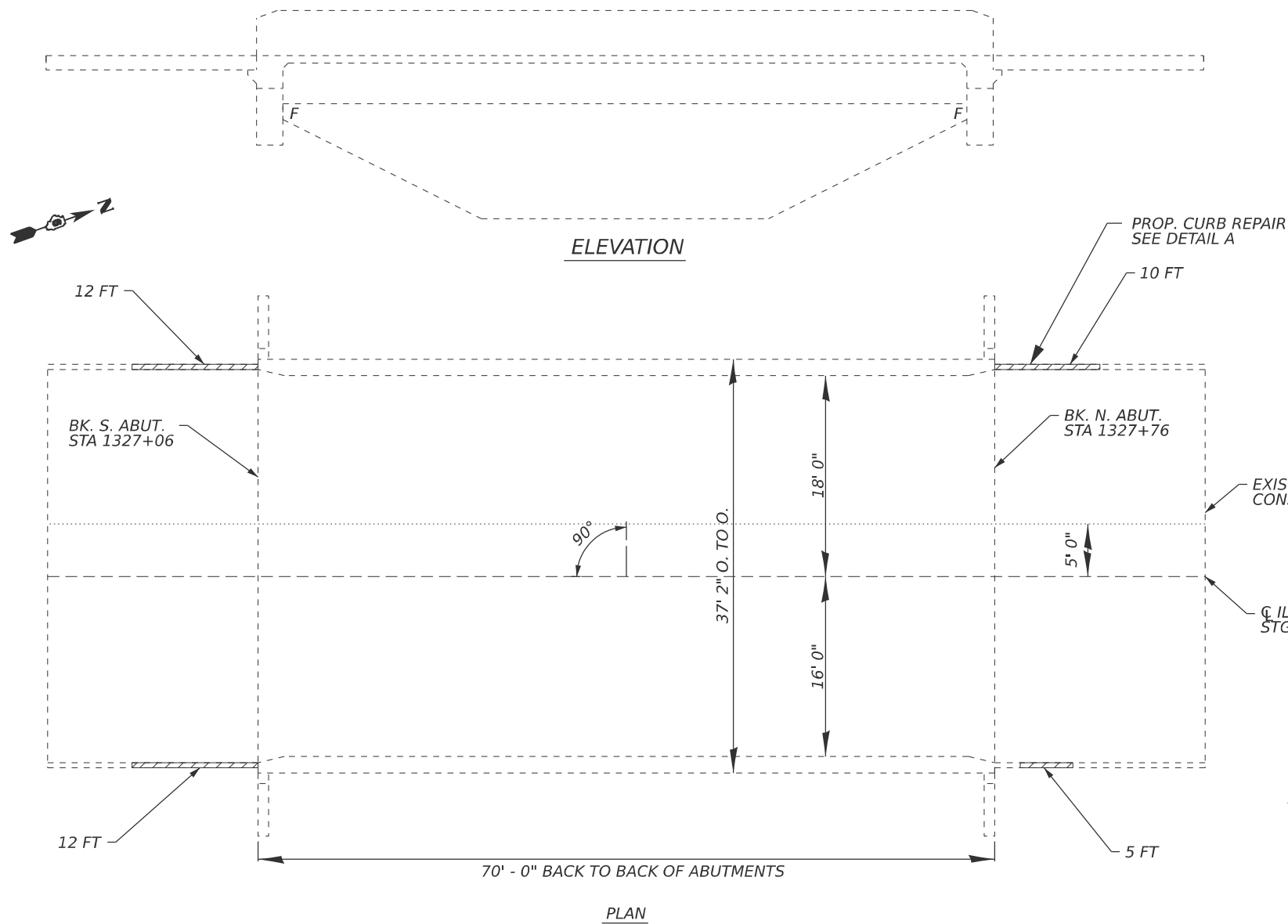
|                            |            |           |
|----------------------------|------------|-----------|
| USER NAME = zachary.specht | DESIGNED - | REVISED - |
|                            | DRAWN -    | REVISED - |
|                            | CHECKED -  | REVISED - |
| PLOT DATE = 1/5/2026       | DATE -     | REVISED - |

**STATE OF ILLINOIS  
DEPARTMENT OF TRANSPORTATION**

**TRAFFIC CONTROL PLAN  
SN 075-0139**

SCALE: SHEET 2 OF 2 SHEETS STA. TO STA.

|                           |            |        |              |           |
|---------------------------|------------|--------|--------------|-----------|
| F.A.S. RTE.               | SECTION    | COUNTY | TOTAL SHEETS | SHEET NO. |
| 1597                      | (14B-2)BDR | PIKE   | 7            | 5         |
| CONTRACT NO. 72511        |            |        |              |           |
| ILLINOIS FED. AID PROJECT |            |        |              |           |



**GENERAL NOTES**

Concrete Curb Repair

Prior to pouring the new concrete deck, all heavy or loose rust, loose mill scale, and other loose or potentially detrimental foreign material shall be removed from the surfaces in contact with concrete. Tightly adhered paint may remain unless otherwise noted. Removal shall be accomplished by methods that will not damage the steel and the cost will be included in the pay item covering removal of the existing concrete.

Plan dimensions and details relative to the existing structure have been taken from existing plans and are subject to nominal construction variations. The Contractor shall field verify existing dimensions and details affecting new construction and make necessary approved adjustments prior to construction or ordering of materials. Such variations shall not be cause for additional compensation for a change in scope of the work, however, the Contractor will be paid for the quantity actually furnished at the unit price bid for the work.

Areas of deck repairs shown are estimated. The Engineer shall show actual locations of deck repairs on As-built Plans.

Existing reinforcement shall be cleaned, straightened and incorporated into the new construction. Cost included with Concrete Removal.

Protective coat shall be applied to new concrete only.

For deck patches adjacent to approach patches, a 1/4" sawcut at the depth of the patches shall be made similar to the existing joint.

**TOTAL BILL OF MATERIAL, SN 075-0139**

| ITEM                                   | UNIT    | QUANTITY |
|--|---------|----------|
| Deck Slab Repair (Partial)             | Sq. Yd. | 51       |
| Deck Slab Repair (Full Depth, Type II) | Sq. Yd. | 15       |
| Approach Slab Repair (Partial Depth)   | Sq. Yd. | 12       |
| Joint Sealing (Patches)                | Foot    | 1,000    |
| Protective Coat                        | Sq. Yd. | 78       |
| Concrete Curb Repair                   | FOOT    | 39       |
|  |         |          |
|  |         |          |
|  |         |          |



Expires November 30, 2026

*Justin W. Mann*

MODEL: bridge (Sheet)  
FILE NAME: c:\p\work\wv\illinois.gov\_zachary.specht\illinois.gov\1167613000\_72511 File Creation Template\72511 plansheet.dgn

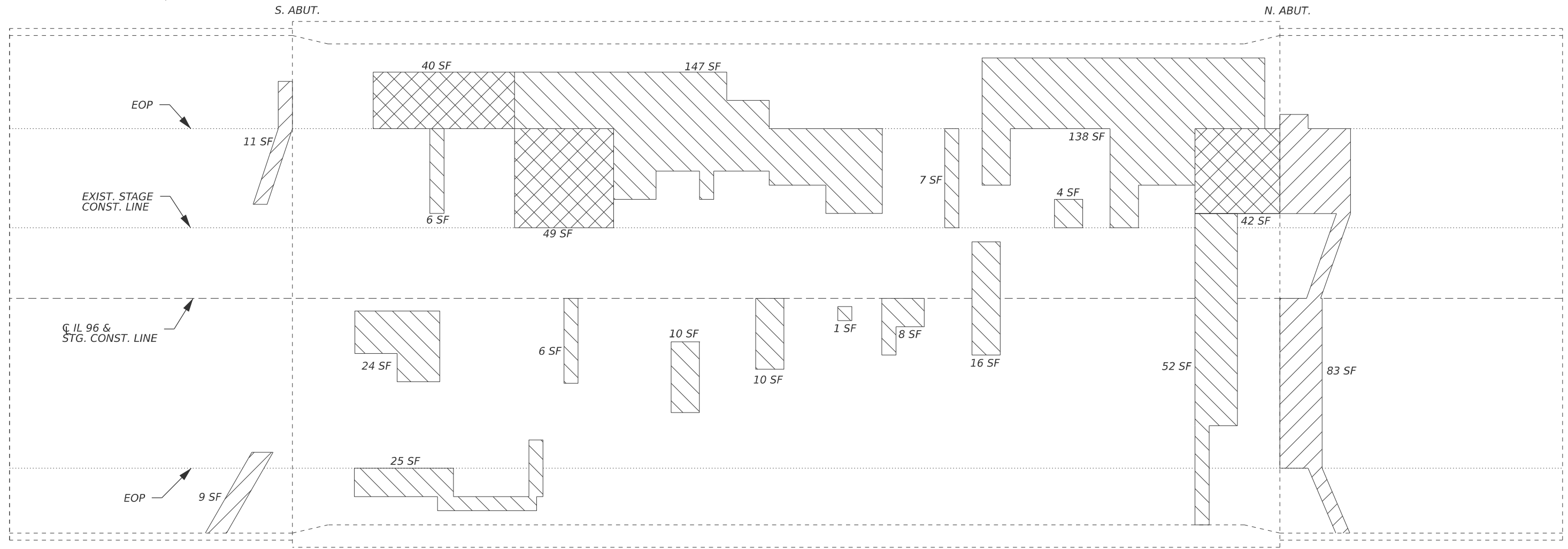
|                            |            |           |
|----------------------------|------------|-----------|
| USER NAME = zachary.specht | DESIGNED - | REVISED - |
|                            | DRAWN -    | REVISED - |
|                            | CHECKED -  | REVISED - |
| PLOT DATE = 1/5/2026       | DATE -     | REVISED - |

**STATE OF ILLINOIS  
DEPARTMENT OF TRANSPORTATION**

**BRIDGE PLAN & ELEVATION  
SN 075-0139**

SCALE: SHEET 1 OF 2 SHEETS STA. TO STA.

|                    |            |        |                           |           |
|--------------------|------------|--------|---------------------------|-----------|
| F.A.S. RTE.        | SECTION    | COUNTY | TOTAL SHEETS              | SHEET NO. |
| 1597               | (14B-2)BDR | PIKE   | 7                         | 6         |
| CONTRACT NO. 72511 |            |        | ILLINOIS FED. AID PROJECT |           |



PLAN

- Approach Slab Repair (Partial Depth)
- Deck Slab Repair (Partial Depth)
- Deck Slab Repair (Full Depth)

Identified patching locations are estimated from a deck survey performed on 7/2/2025. The patching survey is included for information only. The engineer shall lay out actual patch locations in the field.

The engineer shall show actual loactions of deck repairs on as-built plans.

Full depth patches shall be covered with steel plates during non-work hours.

JOINT SEALING (PATCHES) shall be applied in locations as directed in the special provisions, along the entire length of any existing stage construction joints, and along the construction joints between the abutment and approaches.

**SLAB REPAIR BILL OF MATERIAL**

| ITEM                                   | UNIT    | QUANTITY |
|--|---------|----------|
| Deck Slab Repair (Partial)             | Sq. Yd. | 51       |
| Deck Slab Repair (Full Depth, Type II) | Sq. Yd. | 15       |
| Approach Slab Repair (Partial Depth)   | Sq. Yd. | 12       |
| Joint Sealing (Patches)                | Foot    | 1,000    |
| Protective Coat                        | Sq. Yd. | 78       |

MODEL: bridge-1 (Sheet)  
FILE NAME: c:\p\work\project\illinois.gov\zachary.specht\illinois.gov\1167613000\72511\1167613000\72511\plansheet.dgn

|                            |            |           |
|----------------------------|------------|-----------|
| USER NAME = zachary.specht | DESIGNED - | REVISED - |
|                            | DRAWN -    | REVISED - |
|                            | CHECKED -  | REVISED - |
| PLOT DATE = 1/5/2026       | DATE -     | REVISED - |

**STATE OF ILLINOIS  
DEPARTMENT OF TRANSPORTATION**

**SLAB REPAIR DETAILS  
SN 075-0139**

SCALE: SHEET 2 OF 2 SHEETS STA. TO STA.

|                           |            |        |              |           |
|---------------------------|------------|--------|--------------|-----------|
| F.A.S RTE.                | SECTION    | COUNTY | TOTAL SHEETS | SHEET NO. |
| 1597                      | (14B-2)BDR | PIKE   | 7            | 7         |
| CONTRACT NO. 72511        |            |        |              |           |
| ILLINOIS FED. AID PROJECT |            |        |              |           |