

STATE OF ILLINOIS
DEPARTMENT OF TRANSPORTATION

F.A.I. RTE.	SECTION	COUNTY	TOTAL SHEETS	SHEET NO.
VAR.	D6 ITS 2026	VARIOUS	3	1
		ILLINOIS	CONTRACT NO. 72636	

FOR INDEX OF SHEETS, SEE SHEET NO. 2

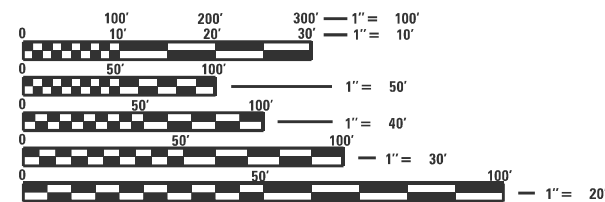
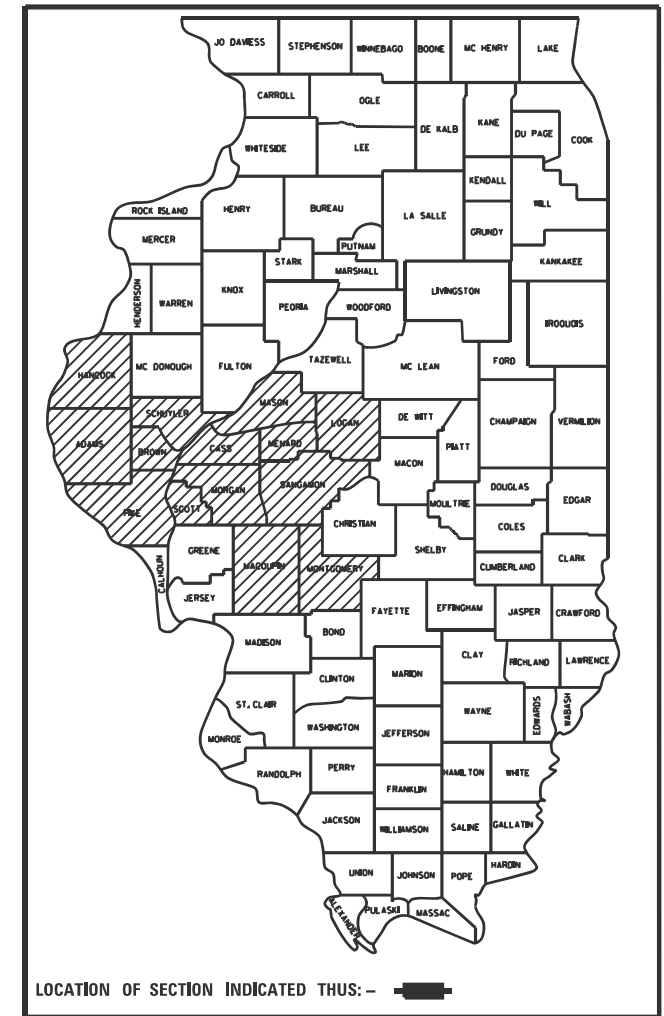
PROPOSED IMPROVEMENTS

VARIOUS SECTION D6 ITS 2026 ITS MAINTENANCE

VARIOUS CO.

C-96-040-26

D-96-011-26



FULL SIZE PLANS HAVE BEEN PREPARED USING STANDARD ENGINEERING SCALES. REDUCED SIZED PLANS WILL NOT CONFORM TO STANDARD SCALES. IN MAKING MEASUREMENTS ON REDUCED PLANS, THE ABOVE SCALES MAY BE USED.

J.U.L.I.E.
JOINT UTILITY LOCATION INFORMATION FOR EXCAVATION
1-800-892-0123
OR 811

PROJECT ENGINEER : MIKE HAMBY - (217)524-7765
PROJECT MANAGER : TIM SHARP - (217)524-9160

CONTRACT NO. 72636

STATE OF ILLINOIS
DEPARTMENT OF TRANSPORTATION

SUBMITTED January 29, 20 26
Teresa C. Price
REGION FOUR ENGINEER

March 20, 20 26
[Signature]
ENGINEER OF DESIGN AND ENVIRONMENT

March 20, 20 26
[Signature]
DIRECTOR OF HIGHWAYS PROJECT IMPLEMENTATION

PRINTED BY THE AUTHORITY OF THE STATE OF ILLINOIS

INDEX OF SHEETS

SHEET NO.	DESCRIPTION
1.	COVER SHEET
2.	INDEX OF SHEETS, STANDARDS, GENERAL NOTES & SIGNATURE
3.	SUMMARY OF QUANTITIES

STANDARDS

STANDARD NO.	DESCRIPTION
701001-02	OFF-RD OPERATIONS, 2L, 2W, MORE THAN 15' (4.5m) AWAY
701006-05	OFF-RD OPERATIONS, 2L, 2W, 15' (4.5m) TO 24" (600 mm) AWAY FROM PAVEMENT EDGE
701101-05	OFF-RD OPERATIONS, MULTILANE, 15' TO 24" FROM EDGE OF PAVEMENT
701106-02	OFF-RD OPERATIONS, MULTILANE, MORE THAN 15' (4.5 m) AWAY
701201-05	LANE CLOSURE, 2L, 2W, DAY ONLY, FOR SPEEDS ≥ 45 MPH
701206-05	LANE CLOSURE, 2L, 2W, NIGHT ONLY, FOR SPEEDS ≥ 45 MPH
701301-04	LANE CLOSURE, 2L, 2W, SHORT TIME OPERATIONS
701400-12	APPROACH TO LANE CLOSURE, FREEWAY/EXPRESSWAY
701401-13	LANE CLOSURE, FREEWAY/EXPRESSWAY
701406-13	LANE CLOSURE, FREEWAY/EXPRESSWAY, DAY OPERATIONS ONLY
701411-09	LANE CLOSURE, MULTILANE, AT ENTRANCE OR EXIT RAMP, FOR SPEEDS ≥ 45 MPH
701421-08	LANE CLOSURE, MULTILANE, DAY OPERATIONS ONLY, FOR SPEEDS ≥ 45 MPH TO 55 MPH
701422-10	LANE CLOSURE, MULTILANE, FOR SPEED ≥ 45 MPH TO 55 MPH
701446-11	TWO LANE CLOSURE, FREEWAY/EXPRESSWAY
701451-05	RAMP CLOSURE FREEWAY/EXPRESSWAY
701456-05	PARTIAL EXIT RAMP CLOSURE FREEWAY/EXPRESSWAY
701601-09	URBAN LANE CLOSURE, MULTILANE, 1W OR 2W WITH NONTRAVERSABLE MEDIAN
701606-10	URBAN SINGLE LANE CLOSURE, MULTILANE, 2W WITH MOUNTABLE MEDIAN
701701-10	URBAN LANE CLOSURE, MULTILANE INTERSECTION
701801-06	SIDEWALK, CORNER OR CROSSWALK CLOSURE
701901-11	TRAFFIC CONTROL DEVICES

STATE OF ILLINOIS DEPARTMENT OF TRANSPORTATION DIVISION OF HIGHWAYS DISTRICT 6	
EXAMINED	February 6, 20 26
<i>J. A. DeLeon</i> ENGINEER OF OPERATIONS	
EXAMINED	February 6, 20 26
<i>R. P. Swartz</i> ENGINEER OF PROJECT IMPLEMENTATION	
EXAMINED	February 6, 20 26
<i>M. V.</i> ENGINEER OF PROGRAM DEVELOPMENT	

Only the District 6 engineer assigned to the project, the RE or RT, will move the signals to manual flash condition and return the signals to "normal" operation. This shall not be delegated. In doing so, the RE or RT will have full responsibility for function of those signals and any issue that may arise from his/her actions.

The RE or RT shall notify by email:

brian.fry@illinois.gov, dale.hebenstreit@illinois.gov or michael.hamby@illinois.gov at least the day prior to the planned traffic signal flash condition.

The contractor shall not have access to the signal cabinet.

If you have any questions or require additional information, please call Michael Hamby at 217-556-4643.

FILE NAME :	USER NAME : Timothy.Sharp	DESIGNED -	REVISED -	STATE OF ILLINOIS DEPARTMENT OF TRANSPORTATION	INDEX OF SHEETS, STANDARDS GENERAL NOTES, SIGNATURES	F.A. RTE.	SECTION	COUNTY	TOTAL SHEETS	SHEET NO.	
pw://idot-pw.bentley.com/IDOT/Document/IDOT Offices/District 6/ORD Projects/7263/Drawings/CAD/Sheet/0636-sh-2-gennote.dwg	DRWING/CAD/Sheet/0636-sh-2-gennote.dwg	CHECKED -	REVISED -			VAR	D6 ITS 2026	VARIOUS	3	2	
Default	PLOT SCALE = #SCALE#	DATE -	REVISED -			SCALE: SHEET OF SHEETS STA. TO STA.			CONTRACT NO. 72636		
	PLOT DATE = 1/29/2026					ILLINOIS FED. AID PROJECT					

0-01325-6001
 CONSTR. CODE
 100% STATE
 VARIOUS

CODE NO.	ITEM	UNIT	TOTAL QUANTITY	ITS 0043 RURAL
81028340	UNDERGROUND CONDUIT, PVC 1 1/2"	FOOT	1500	1500
81400100	HANDHOLE	EACH	6	6
87900200	DRILL EXISTING HANDHOLE	EACH	6	6
X0327495	JOURNEYMAN ELECTRICIAN	HOUR	200	200
X0327497	PICK-UP TRUCK	HOUR	200	200
X0327499	BUCKET TRUCK (LENGTH 35 TO 65 FEET)	HOUR	150	150
X0327500	ARROWBOARD (TRAILER MOUNTED)	HOUR	50	50
X0327501	ATTENUATOR, CRASH (TRUCK MOUNTED)	HOUR	50	50
X8710029	FIBER OPTIC CABLE 24 FIBERS, SINGLE MODE	FOOT	1500	1500
X8710103	ETHERNET SWITCH	EACH	10	10

FILE NAME =	USER NAME = Timothy.Sharp	DESIGNED -	REVISED -
pw://idot-pw.bentley.com/IDOT/Documents/IDOT Offices/District 6/ORD Projects/72636/Drawings/CAD/Sheet/01336-sh-3-900.dgn		CHECKED -	REVISED -
Default	PLOT DATE = 12/12/2025	DATE -	REVISED -

STATE OF ILLINOIS
 DEPARTMENT OF TRANSPORTATION

SUMMARY OF QUANTITIES

SCALE: SHEET OF SHEETS STA. TO STA.

F.A. RTE.	SECTION	COUNTY	TOTAL SHEETS	SHEET NO.
VAR	D6 ITS 2026	VARIOUS	3	3
			CONTRACT NO. 72636	
ILLINOIS FED. AID PROJECT				