

STATE OF ILLINOIS
DEPARTMENT OF TRANSPORTATION

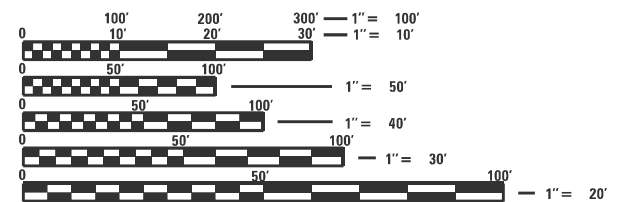
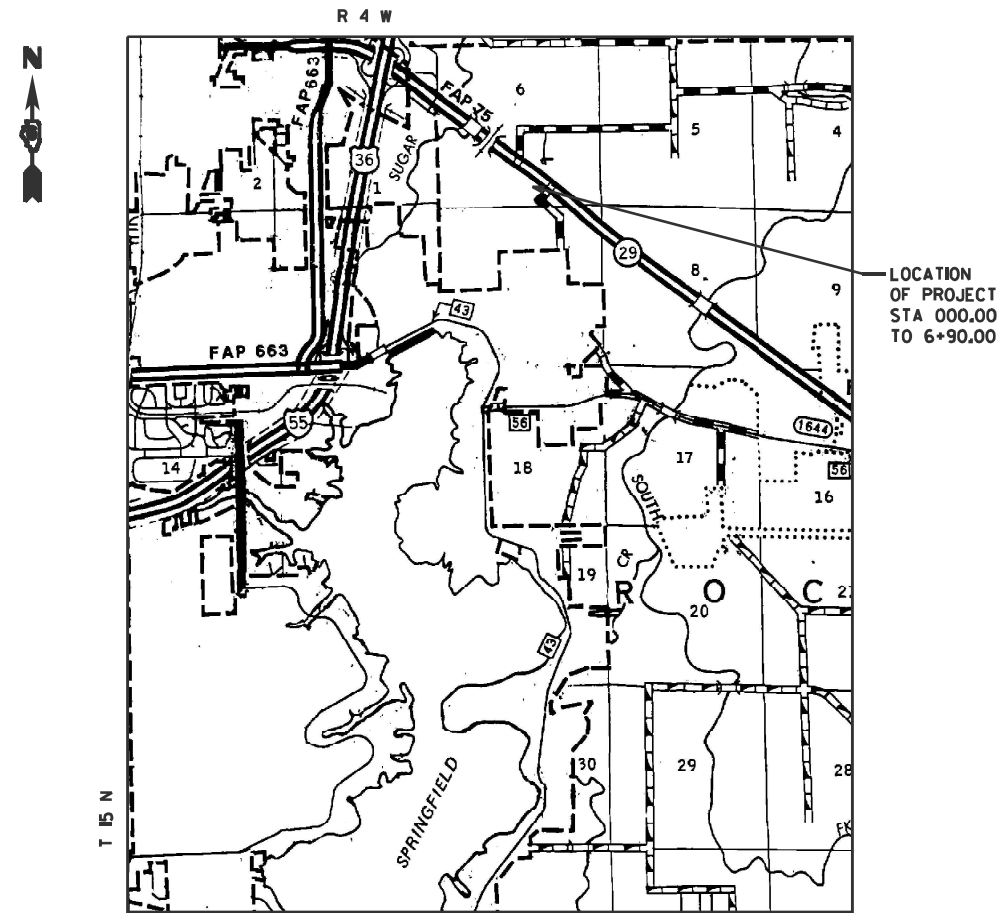
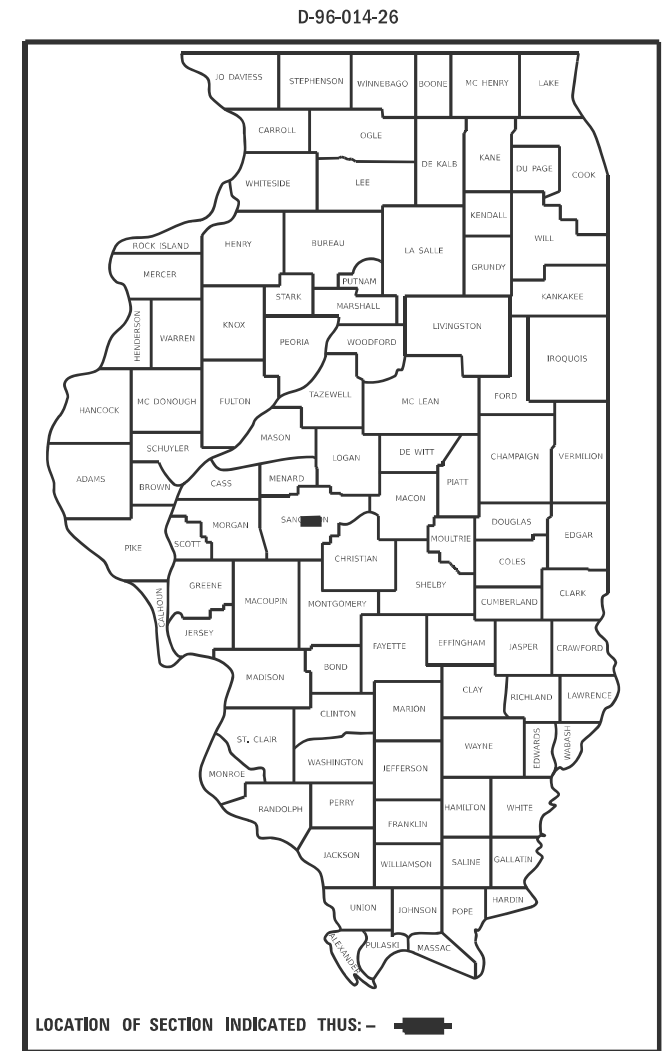
F.A.P. RTE.	SECTION	COUNTY	TOTAL SHEETS	SHEET NO.
75 2	8RS-8	SANGAMON	6	1
		ILLINOIS	638	

FOR INDEX OF SHEETS, SEE SHEET NO. 2

PROPOSED HIGHWAY PLANS

FAP ROUTE 75
SECTION 8RS-8
PROJECT
STANDARD OVERLAY
SANGAMON COUNTY

C-96-043-26



FULL SIZE PLANS HAVE BEEN PREPARED USING STANDARD ENGINEERING SCALES. REDUCED SIZED PLANS WILL NOT CONFORM TO STANDARD SCALES. IN MAKING MEASUREMENTS ON REDUCED PLANS, THE ABOVE SCALES MAY BE USED.

J.U.L.I.E.
JOINT UTILITY LOCATION INFORMATION FOR EXCAVATORS
1-800-892-0123
OR 811

PROJECT ENGINEER: MIKE HAMBY (217)524-7765
PROJECT MANAGER TIM SHARP (217)524-9160

GROSS LENGTH = 686.00 FT. = 0.13 MILE
NET LENGTH = 686.00 FT. = 0.130 MILE

CONTRACT NO. 72638

STATE OF ILLINOIS
DEPARTMENT OF TRANSPORTATION

SUBMITTED February 2, 2026
Teresa C. Price
REGIONAL ENGINEER

March 20, 2026
[Signature]
ENGINEER OF DESIGN AND ENVIRONMENT

March 20, 2026
[Signature]
DIRECTOR OF HIGHWAYS PROJECT IMPLEMENTATION

PRINTED BY THE AUTHORITY
OF THE STATE OF ILLINOIS

INDEX OF SHEETS

SHEET NO.	DESCRIPTION
1.	COVER SHEET
2.	INDEX OF SHEETS, STANDARDS, GENERAL NOTES & SIGNATURES
3.	SUMMARY OF QUANTITIES
4.	SCHEDULES
5.	LOCATION MAP
6.	TYPICAL SECTION

STANDARDS

STANDARD NO.	DESCRIPTION
701001-02	OFF-RD OPERATIONS, 2L, 2W, MORE THAN 15' AWAY
701006-05	OFF-RD OPERATIONS, 2L, 2W, 15' TO 24' FROM PAVEMENT EDGE
701306-04	LANE CLOSURE, 2L, 2W, DAY ONLY, SLOW MOVING OPERATIONS DAY ONLY FOR SPEEDS > 45 MPH
701901-11	TRAFFIC CONTROL DEVICES

STATE OF ILLINOIS DEPARTMENT OF TRANSPORTATION DIVISION OF HIGHWAYS DISTRICT 6	
EXAMINED	February 6, 20 26 <i>J.A. Scherer</i> ENGINEER OF OPERATIONS
EXAMINED	February 6, 20 26 <i>R.P. Smith</i> ENGINEER OF PROJECT IMPLEMENTATION
EXAMINED	February 6, 20 26 <i>M.V.</i> ENGINEER OF PROGRAM DEVELOPMENT

THE FOLLOWING RATES OF APPLICATION HAVE BEEN ASSUMED IN CALCULATING PLAN QUANTITIES:

BITUMINOUS MATERIALS (TACK COAT)	0.05 LBS/SQ FT (EX HMA, MILLED SURFACE)
HMA SURFACE(112 LBS)	0.056 TON/SQUARE YARD - INCH (MIX A-C)

Only the District 6 engineer assigned to the project, the RE or RT, will move the signals to manual flash condition and return the signals to "normal" operation. This shall not be delegated. In doing so, the RE or RT will have full responsibility for function of those signals and any issue that may arise from his/her actions.

The RE or RT shall notify by email:

byan.fry@illinois.gov, dale.hebenstreit@illinois.gov, or michael.hamby@illinois.gov at least the day prior to the planned traffic signal flash condition.

The contractor shall not have access to the signal cabinet.

If you have any questions or require additional information, please call Michael Hamby at 217-556-4643.

MIXTURE REQUIREMENTS	
MIXTURE USE(S):	HMA SURFACE COURSE
PG:	58-28
DESIGN AIR VOIDS:	4.0% @ N50
MIXTURE COMPOSITION:	IL-9.5
FRICTION AGGREGATE:	MIX C
MIXTURE WEIGHT:	112 lb/sq yd*in
QUALITY MANAGEMENT:	QC/QA
SUBLOT SIZE:	N/A
MTD REQUIRED:	NO

REV - MS

MODEL: D:\draft\...
FILE NAME: ...

USER NAME = Timothy.Sharp	DESIGNED -	REVISED -
	DRAWN -	REVISED -
PLOT SCALE = \$SCALE\$	CHECKED -	REVISED -
PLOT DATE = 1/30/2026	DATE -	REVISED -

STATE OF ILLINOIS
DEPARTMENT OF TRANSPORTATION

INDEX OF SHEETS, HIGHWAY STANDARDS,
GENERAL NOTES, & SIGNATURES

SCALE: SHEET OF SHEETS STA. TO STA.

F.A.P. RTE.	SECTION	COUNTY	TOTAL SHEETS	SHEET NO.
75 2	BRS-8	SANGAMON	6	2
			CONTRACT NO. 72638	
ILLINOIS FED. AID PROJECT				

STA.	TO	STA.	LENGTH	AVG. WIDTH	AREA	BITUMINOUS MATERIALS (TACK COAT)		HMA SUR. REMOVAL 2"	HMA SUR. COURSE, IL-9.5, MIX "C", N50		
						RATE	POUND	SQ YD	DEPTH	RATE	TON
			FT	FT	SQ FT	POUND/SQ FT			INCH	TON/SQ YD	
00+00.00	TO	06+90.00	690.00	24	16560	0.05	828	1840	2	0.056	206
TOTALS			690	-	16560	-	828	1840	-	-	206

TEMPORARY RAMP				
LOCATION	STA.	WIDTH	LENGTH	SQ YD
		FT	FT	
LEFT	00+00.00	12	6.7	8.9
RIGHT	00+00.00	12	6.7	8.9
LEFT	06+90.00	12	6.7	8.9
RIGHT	06+90.00	12	6.7	8.9
TOTAL				35.7

MODEL: D:\draft
 FILE NAME: p:\illinois-caw-bentley.com\PI\DOT\Documents\DOT_0_csa\District_6\ORBD_Project\72638\CAD\Draw\CAD\Sheet\72638-Sub-4-schedules (1).dgn

USER NAME = Timothy.Sharp	DESIGNED -	REVISED -
	DRAWN -	REVISED -
PLOT SCALE = 5/5CALES	CHECKED -	REVISED -
PLOT DATE = 1/30/2026	DATE -	REVISED -

STATE OF ILLINOIS
DEPARTMENT OF TRANSPORTATION

SCHEDULES			
SCALE:	SHEET	OF SHEETS	STA. TO STA.

F.A.P. RTE.	SECTION	COUNTY	TOTAL SHEETS	SHEET NO.
75 2	8RS-8	SANGAMON	6	4
CONTRACT NO. 72638				
ILLINOIS FED. AID PROJECT				



BEGIN PROJECT
STA. 0+00.00



END PROJECT
STA. 6+90.00

MODEL: Default
FILE NAME: p:\118-caw-bentley.com\2\118DOT\Documents\DOT 0_caw\District 6\ORR\Project\72638\CAD\Drawings\72638-815-Plans_11.dwg

USER NAME = Timothy.Sharp	DESIGNED -	REVIS
	DRAWN -	REVIS
PLOT SCALE = \$SCALE\$	CHECKED -	REVIS
PLOT DATE = 1/14/2026	DATE -	REVIS

DESIGNED -	REVIS
DRAWN -	REVIS
CHECKED -	REVIS
DATE -	REVIS

DESIGNED -	REVIS
DRAWN -	REVIS
CHECKED -	REVIS
DATE -	REVIS

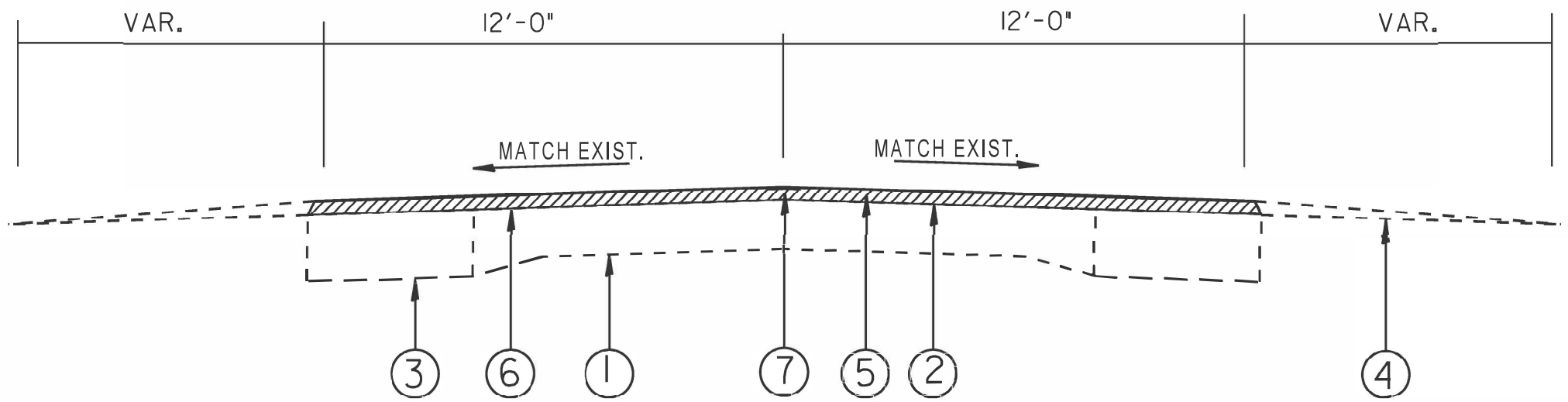
**STATE OF ILLINOIS
DEPARTMENT OF TRANSPORTATION**

LOCATION MAP

SCALE: SHEET OF SHEETS STA. TO STA.

F.A.P. RTE.	SECTION	COUNTY	TOTAL SHEETS	SHEET NO.
75 2	8RS-8	SANGAMON	6	5
CONTRACT NO. 72638				
ILLINOIS FED. AID PROJECT				

F.A. 75 2 (IL 29 SPUR)



STA. 0+00.00 TO 6+90.00

LEGEND

- ① EXIST. PCC PAVEMENT (9-6-9)
- ② EXIST. H.M.A. SURFACE
- ③ EXIST. BASE COURSE WIDENING
- ④ EXIST. AGGREGATE SHOULDER
- ⑤ PROP. H.M.A. SURFACE REMOVAL 2"
- ⑥ PROP. H.M.A. SURFACE 2"
- ⑦ PROP. LONGITUDINAL JOINT SEALANT

FILE NAME = pw7/11dot-pw.bentley.com/P11DOT/Document	USER NAME = Timothy.Sharp	DESIGNED -	REVISED -	STATE OF ILLINOIS DEPARTMENT OF TRANSPORTATION	TYPICAL SECTIONS		F.A.P. RTE.	SECTION	COUNTY	TOTAL SHEETS	SHEET NO.
	PLOT SCALE = #SCALE#	CHECKED -	REVISED -				75 2	BRS-B	SANGAMON	6	6
Default	PLOT DATE = 1/14/2026	DATE -	REVISED -		SCALE:	SHEET OF SHEETS	STA. TO STA.	ILLINOIS FED. AID PROJECT CONTRACT NO. 72638			