

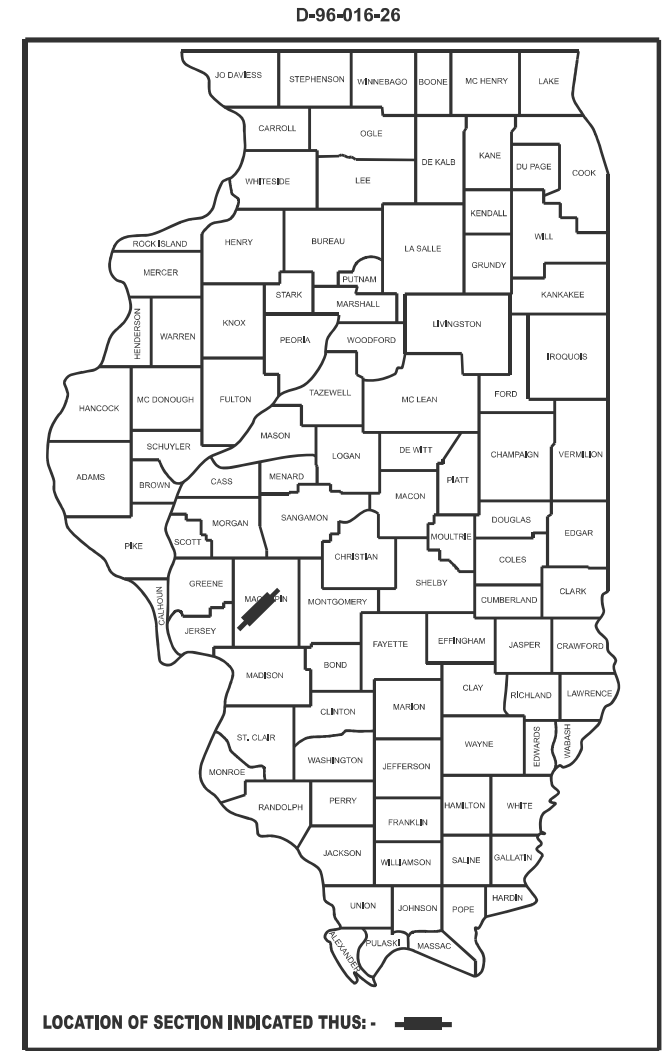
STATE OF ILLINOIS
DEPARTMENT OF TRANSPORTATION

F.A.S. RTE.	SECTION	COUNTY	TOTAL SHEETS	SHEET NO.
735	7B-1)BDR-1,BP,BRR,BJR	MACOUPIN	22	1
		ILLINOIS	CONTRACT NO. 72669	

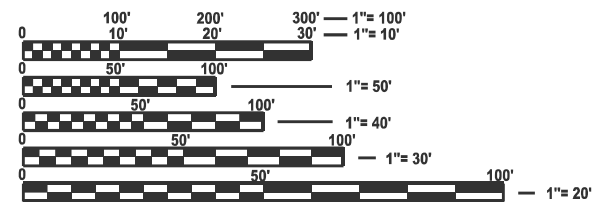
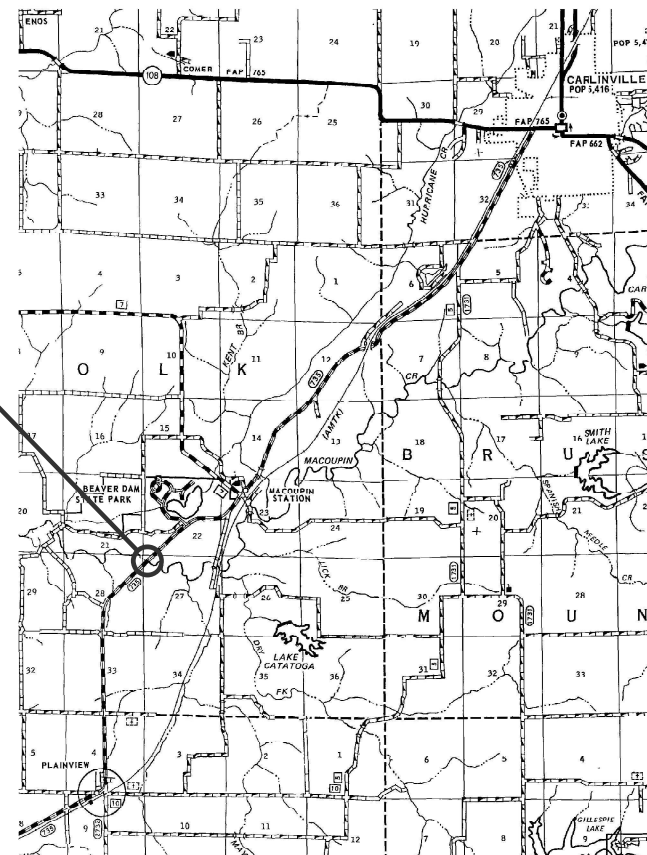
FOR INDEX OF SHEETS, SEE SHEET NO. 2

**PROPOSED
HIGHWAY PLANS**

**FAS ROUTE 735 (SHIPMAN BLACKTOP)
SECTION (7B-1)BDR-1,BP,BRR,BJR
PROJECT STP-SFG6(343)
BRIDGE DECK OVERLAY
MACOUPIN COUNTY
C-96-046-26**



PROJECT LOCATION:
SN 059-0049
SHIPMAN BLACKTOP
OVER MACOUPIN CR.
7.7 MI N IL 16



FULL SIZE PLANS HAVE BEEN PREPARED USING STANDARD ENGINEERING SCALES. REDUCED SIZED PLANS WILL NOT CONFORM TO STANDARD SCALES. IN MAKING MEASUREMENTS ON REDUCED PLANS, THE ABOVE SCALES MAY BE USED.

J.U.L.I.E.
JOINT UTILITY LOCATION INFORMATION FOR EXCAVATION
1-800-892-0123
OR 811

PROJECT ENGINEER: BRANDON DUDLEY - (217) 785-9290
PROJECT MANAGER

CONTRACT NO. 72669

GROSS LENGTH = 399 FT. = 0.08 MILE
NET LENGTH = 399 FT. = 0.08 MILE

STATE OF ILLINOIS
DEPARTMENT OF TRANSPORTATION

SUBMITTED January 26, 2026
Teresa C. Price
REGIONAL ENGINEER

March 20, 2026
[Signature]
ENGINEER OF DESIGN AND ENVIRONMENT

March 20, 2026
[Signature]
DIRECTOR OF HIGHWAYS PROJECT IMPLEMENTATION

**PRINTED BY THE AUTHORITY
OF THE STATE OF ILLINOIS**

INDEX OF SHEETS

- 1 COVER SHEET
- 2 INDEX, STANDARDS, GENERAL NOTES, SIGNATURES, & SCHEDULES
- 3-5 SUMMARY OF QUANTITIES
- 6 TYPICAL SECTIONS
- 7 ROADWAY PLAN
- 8-10 TRAFFIC CONTROL PLAN
- 11-22 BRIDGE PLANS, SN 059-0049

HIGHWAY STANDARDS

- 000001-09
- 001001-02
- 001006
- 701001-02
- 701006-05
- 701201-05
- 701301-04
- 701311-03
- 701321-19
- 701326-04
- 701901-11
- 704001-08
- 780001-05
- 782006-01

SHOULDER IMPROVEMENT SCHEDULE					
STA	TO	STA	EARTH EX. (WIDENING) (CU. YD.)	BASE CSE. WIDENING - 8" (SQ. YD.)	AGG. WEDGE SHLDR. TY. B (TON)
379+50 LT	-	380+24 LT	7.3	32.9	2.8
380+24 LT	-	381+58 LT	-	-	5.1
379+50 RT	-	380+24 RT	7.3	32.9	2.8
380+24 RT	-	381+58 RT	-	-	5.1
385+87 LT	-	387+35 LT	-	-	5.6
387+35 LT	-	387+56 LT	2.1	9.3	0.8
385+87 RT	-	387+35 RT	-	-	5.6
387+35 RT	-	388+00 RT	6.4	28.9	2.5
TOTALS:			23.1	104.0	30.3

GENERAL NOTES:

HMA MIX TABLE			
MIXTURE USE	HMA BASE CSE (TOP 1.5")	HMA BASE CSE (LOWER LIFTS)	HMA SURF. CSE
PG	PG 64-22	PG 64-22	PG 64-22
DESIGN AIR VOIDS	4.0% @ N50	4.0% @ N50	4.0% @ N50
MIXTURE COMPOSITION	IL-9.5	IL-19.0	IL-9.5
FRICTION AGGREGATE	MIX "C"	N/A	MIX "C"
MIXTURE WEIGHT	112 LB/SY*IN	112 LB/SY*IN	112 LB/SY*IN
QUALITY MANAGEMENT	QC/QA	QC/QA	QC/QA
SUBLOT SIZE	N/A	N/A	N/A

**STATE OF ILLINOIS
DEPARTMENT OF TRANSPORTATION
DIVISION OF HIGHWAYS
DISTRICT 6**

EXAMINED January 25, 20 26
J.A. Johnson
ENGINEER OF OPERATIONS

EXAMINED January 22, 20 26
R.P. Swetty
ENGINEER OF PROJECT IMPLEMENTATION

EXAMINED January 26, 20 26
M.V.
ENGINEER OF PROGRAM DEVELOPMENT

MODEL: index (Sheet)
FILE NAME: c:\p\work\pwr\pwr\dudley\m1185014172669.plansheet.dgn

USER NAME = brandon.dudley	DESIGNED -	REVISED -
	DRAWN -	REVISED -
	CHECKED -	REVISED -
PLOT DATE = 1/5/2026	DATE -	REVISED -

**STATE OF ILLINOIS
DEPARTMENT OF TRANSPORTATION**

INDEX OF SHEETS, GENERAL NOTES HIGHWAY STANDARDS, SCHEDULES, & SIGNATURES			
SCALE:	SHEET 1 OF 1 SHEETS	STA.	TO STA.

F.A.S RTE.	SECTION	COUNTY	TOTAL SHEETS	SHEET NO.
735	7B-1)BDR-1,BP,BRR,BJR	MACOUPIN	22	2
CONTRACT NO. 72669				
ILLINOIS FED. AID PROJECT				

6-02085-0000
 SN 059-0049
 80% FED. STP
 20% STATE
 BRIDGE
 0047
 RURAL

CODE NO.	ITEM	UNIT	TOTAL QUANTITY	
20200500	EARTH EXCAVATION (WIDENING)	CU YD	24	24
28100807	STONE DUMPED RIPRAP, CLASS A4	TON	150	150
35650300	BASE COURSE WIDENING 8"	SQ YD	104	104
40600290	BITUMINOUS MATERIALS (TACK COAT)	POUND	723	723
40600982	HOT-MIX ASPHALT SURFACE REMOVAL - BUTT JOINT	SQ YD	356	356
40600990	TEMPORARY RAMP	SQ YD	86	86
40604050	HOT-MIX ASPHALT SURFACE COURSE, IL-9.5, MIX "C", N50	TON	158	158
48102100	AGGREGATE WEDGE SHOULDER, TYPE B	TON	31	31
50102400	CONCRETE REMOVAL	CU YD	9.0	9.0
50300255	CONCRETE SUPERSTRUCTURE	CU YD	10.0	10.0
50300260	BRIDGE DECK GROOVING	SQ YD	1317	1317
50300300	PROTECTIVE COAT	SQ YD	1419	1419
50800205	REINFORCEMENT BARS, EPOXY COATED	POUND	1610	1610
50800515	BAR SPLICERS	EACH	24	24

MODEL: SOQ (Sheet)
 FILE NAME: c:\p\work\pwr\165014172669.plansheet.dgn

USER NAME = brandon.dudley	DESIGNED -	REVISED -
	DRAWN -	REVISED -
	CHECKED -	REVISED -
PLOT DATE = 1/5/2026	DATE -	REVISED -

**STATE OF ILLINOIS
 DEPARTMENT OF TRANSPORTATION**

SUMMARY OF QUANTITIES

SCALE: SHEET 1 OF 3 SHEETS STA. TO STA.

F.A.S RTE.	SECTION	COUNTY	TOTAL SHEETS	SHEET NO.
735	7B-1)BDR-1,BP,BRR,BJR	MACOUPIN	22	3
CONTRACT NO. 72669				
ILLINOIS FED. AID PROJECT				

6-02085-0000
 SN 059-0049
 80% FED. STP
 20% STATE
 BRIDGE
 0047
 RURAL

CODE NO.	ITEM	UNIT	TOTAL QUANTITY	
52000110	PREFORMED JOINT STRIP SEAL	FOOT	68	68
53016002	DECK SLAB REPAIR (FULL DEPTH, TYPE II)	SQ YD	46	46
53101002	BRIDGE DECK SCARIFICATION 3/4"	SQ YD	1390	1390
53101609	BRIDGE DECK MICROSILICA CONCRETE OVERLAY 2 1/2"	SQ YD	1390	1390
53212754	STRUCTURAL REPAIR OF CONCRETE (DEPTH EQUAL TO OR LESS THAN 5 INCHES)	SQ FT	35	35
67100100	MOBILIZATION	L SUM	1	1
70100405	TRAFFIC CONTROL AND PROTECTION, STANDARD 701321	EACH	1	1
70100450	TRAFFIC CONTROL AND PROTECTION, STANDARD 701201	L SUM	1	1
70100500	TRAFFIC CONTROL AND PROTECTION, STANDARD 701326	L SUM	1	1
70106500	TEMPORARY BRIDGE TRAFFIC SIGNALS	EACH	1	1
70106700	TEMPORARY RUMBLE STRIPS	EACH	6	6
70107025	CHANGEABLE MESSAGE SIGNS	CAL DAY	300	300
70300100	SHORT TERM PAVEMENT MARKING	FOOT	100	100
70300150	SHORT TERM PAVEMENT MARKING REMOVAL	SQ FT	1700	1700

MODEL: SQC-1 [Sheet]
 FILE NAME: c:\p\work\pavistodudley\mtd1165014172669.plansheet.dgn

USER NAME = brandon.dudley	DESIGNED -	REVISED -
	DRAWN -	REVISED -
	CHECKED -	REVISED -
PLOT DATE = 1/5/2026	DATE -	REVISED -

**STATE OF ILLINOIS
 DEPARTMENT OF TRANSPORTATION**

SUMMARY OF QUANTITIES

SCALE: SHEET 2 OF 3 SHEETS STA. TO STA.

F.A.S RTE.	SECTION	COUNTY	TOTAL SHEETS	SHEET NO.
735	7B-1)BDR-1,BP,BRR,BJR	MACOUPIN	22	4
CONTRACT NO. 72669				
ILLINOIS FED. AID PROJECT				

6-02085-0000
 SN 059-0049
 80% FED. STP
 20% STATE
 BRIDGE
 0047
 RURAL

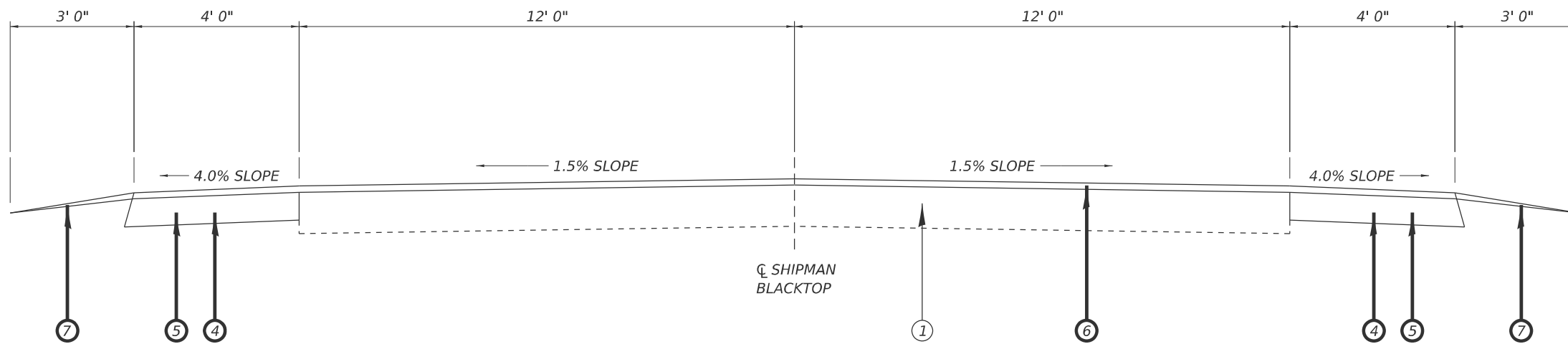
CODE NO.	ITEM	UNIT	TOTAL QUANTITY	
70400100	TEMPORARY CONCRETE BARRIER	FOOT	850	850
70400200	RELOCATE TEMPORARY CONCRETE BARRIER	FOOT	850	850
70600260	IMPACT ATTENUATORS, TEMPORARY (FULLY REDIRECTIVE, NARROW), TEST LEVEL 3	EACH	2	2
70600332	IMPACT ATTENUATORS, RELOCATE (FULLY REDIRECTIVE, NARROW), TEST LEVEL 3	EACH	2	2
* 78009005	MODIFIED URETHANE PAVEMENT MARKING - LINE 5"	FOOT	3000	3000
78300201	PAVEMENT MARKING REMOVAL - GRINDING	SQ FT	600	600
X5060601	CONTAINMENT AND DISPOSAL OF NON-LEAD PAINT CLEANING RESIDUES NO. 1	L SUM	1	1
X5230190	DRAINAGE SCUPPERS, DS-33	EACH	10	10
X6024503	INLETS TO BE ADJUSTED WITH NEW FRAME AND GRATE (SPECIAL)	EACH	2	2
X7200201	WIDTH RESTRICTION SIGNING	L SUM	1	1
Z0001800	APPROACH SLAB REPAIR (PARTIAL DEPTH)	SQ YD	48	48
Z0010501	CLEANING AND PAINTING STEEL BRIDGE NO. 1	L SUM	1	1
Z0012500	CONCRETE CURB REPAIR	FOOT	10	10
∅ Z0076600	TRAINEES	HOUR	500	500
∅ Z0076604	TRAINEES TRAINING PROGRAM GRADUATE	HOUR	500	500

* SPECIALTY ITEM
 ∅ 0042

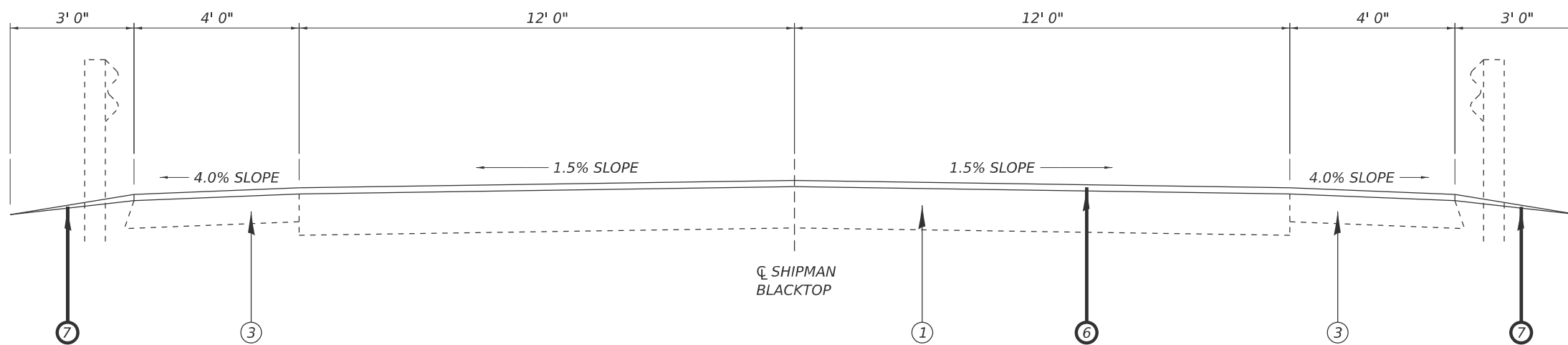
MODEL: SQ02 [Sheet]
 FILE NAME: c:\pw\work\vision\dudley\mtd118501472669.plansheet.dgn

REV - MS

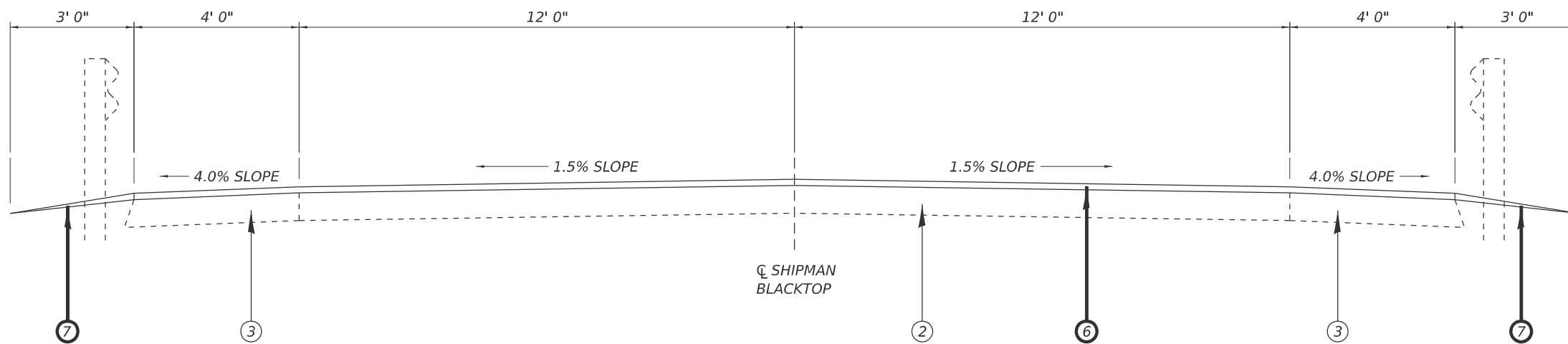
USER NAME = brandon.dudley	DESIGNED -	REVISED -	STATE OF ILLINOIS DEPARTMENT OF TRANSPORTATION	SUMMARY OF QUANTITIES				F.A.S RTE.	SECTION	COUNTY	TOTAL SHEETS	SHEET NO.		
	DRAWN -	REVISED -		SCALE:	SHEET 3	OF 3	SHEETS	STA.	TO STA.	735	(7B-1)BDR-1,BP,BRR,BJR	MACOUPIN	22	5
	CHECKED -	REVISED -		CONTRACT NO. 72669										
PLOT DATE = 1/29/2026	DATE -	REVISED -		ILLINOIS FED. AID PROJECT										



STA 379+50.00 STA 380+24.00
 STA 387+35.00 TO 387+56.00 LT
 STA 387+35.00 TO 388+00.00 RT



STA 380+24.00 TO STA 380+73.67
 STA 386+72.33 TO STA 387+35.00



STA 380+73.67 TO STA 381+73.67
 BRIDGE OMISSION - STA 381+73.67 TO STA 385+72.33
 STA 385+72.33 TO STA 386+72.33

- ① EX. HMA PAVT, ± 12"
- ② EX. PCC APPR. PAVT, ± 8"
- ③ EX. HMA BASE CSE. WIDENING, 8"
- ④ PR. EARTH EX. (WIDENING)
- ⑤ PR. BASE CSE. WIDENING - 8"
- ⑥ PR. HMA SURF. CSE, 1-3/4"
- ⑦ PR. AGG. WEDGE SHLDR.

MODEL: Typical (Sheet)
 FILE NAME: c:\p\work\pav\diverens\fid1185014172669_plansheet.dgn

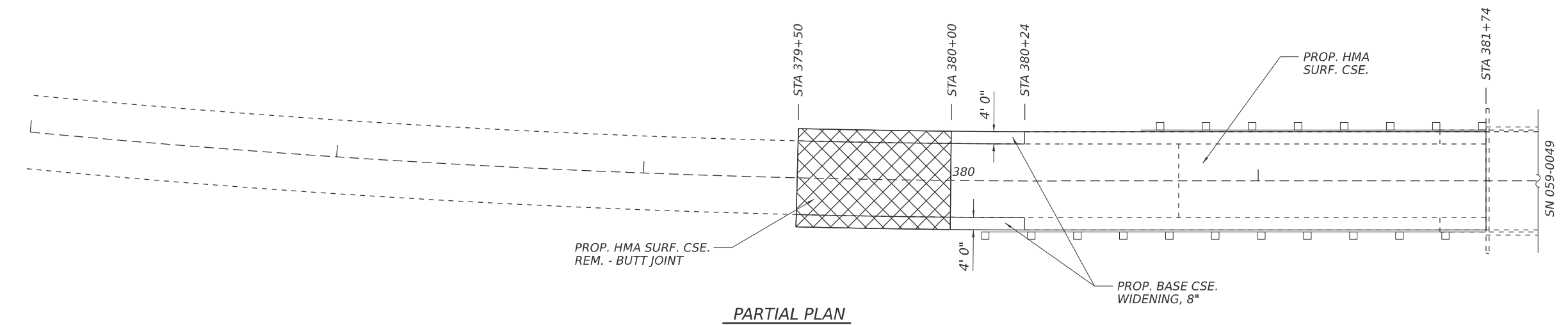
USER NAME = brandon.dudley	DESIGNED -	REVISED -
	DRAWN -	REVISED -
	CHECKED -	REVISED -
PLOT DATE = 1/5/2026	DATE -	REVISED -

**STATE OF ILLINOIS
 DEPARTMENT OF TRANSPORTATION**

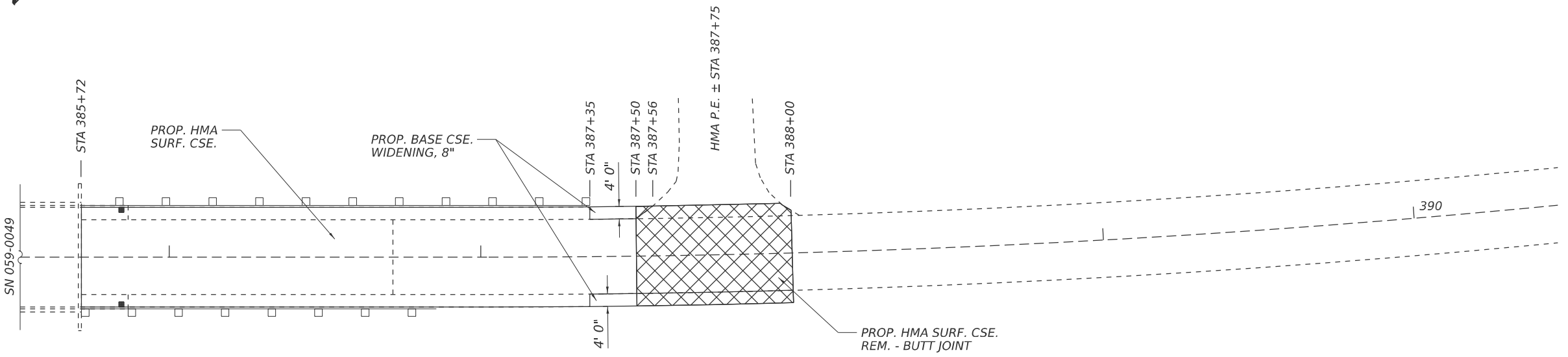
TYPICAL SECTIONS

SCALE: SHEET 1 OF 1 SHEETS STA. TO STA.

F.A.S RTE.	SECTION	COUNTY	TOTAL SHEETS	SHEET NO.
735	(7B-1)BDR-1,BP,BRR,BJR	MACOUPIN	22	6
CONTRACT NO. 72669				
ILLINOIS FED. AID PROJECT				



PARTIAL PLAN



PARTIAL PLAN

MODEL: plan (Sheet)
 FILE NAME: c:\p\work\p\wis\tdudley\m\1165014172669_plansheet.dgn

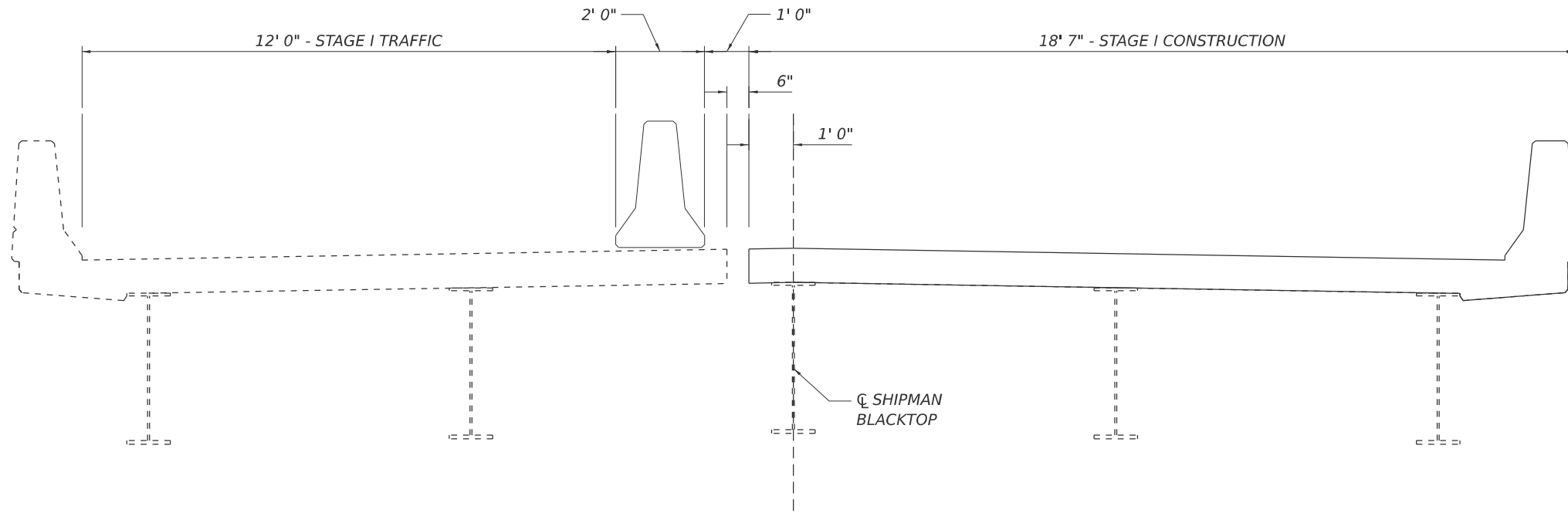
USER NAME = brandon.dudley	DESIGNED -	REVISED -
	DRAWN -	REVISED -
	CHECKED -	REVISED -
PLOT DATE = 1/5/2026	DATE -	REVISED -

**STATE OF ILLINOIS
 DEPARTMENT OF TRANSPORTATION**

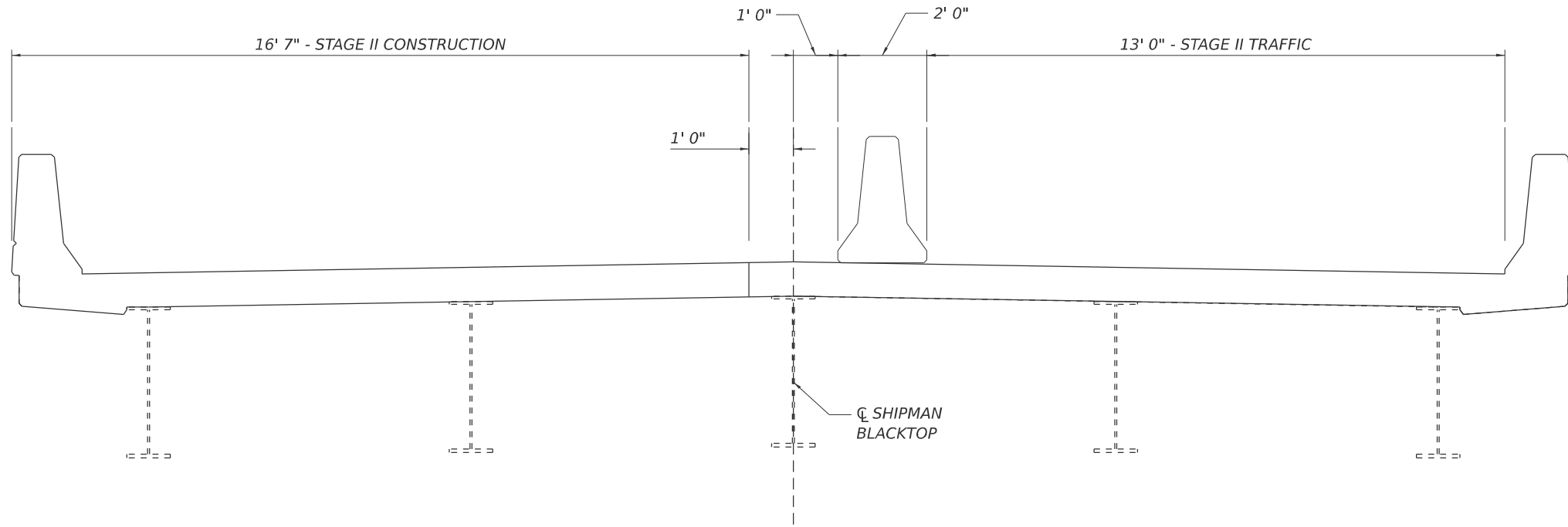
ROADWAY PLAN

SCALE: SHEET 1 OF 1 SHEETS STA. TO STA.

F.A.S RTE.	SECTION	COUNTY	TOTAL SHEETS	SHEET NO.
735	(7B-1)BDR-1,BP,BRR,BJR	MACOUPIN	22	7
CONTRACT NO. 72669				
ILLINOIS FED. AID PROJECT				



STAGE I TRAFFIC - LOOKING SOUTH



STAGE II TRAFFIC - LOOKING SOUTH

MODEL: TC (Sheet)
FILE NAME: c:\p\work\pavistodudley\mtd1165014172669.plansheet.dgn

USER NAME = brandon.dudley	DESIGNED -	REVISED -
	DRAWN -	REVISED -
	CHECKED -	REVISED -
PLOT DATE = 1/5/2026	DATE -	REVISED -

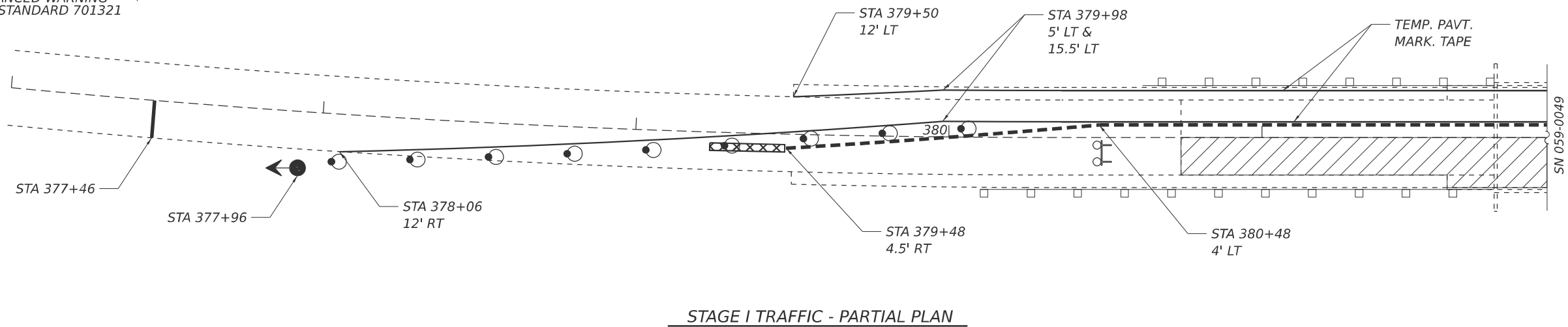
**STATE OF ILLINOIS
DEPARTMENT OF TRANSPORTATION**

TRAFFIC STAGING DETAIL

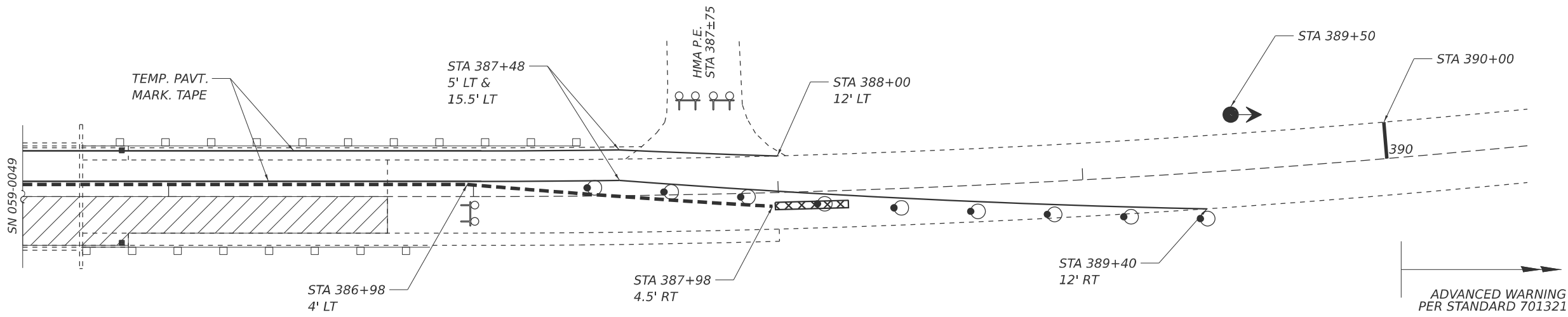
SCALE: SHEET 1 OF 3 SHEETS STA. TO STA.

F.A.S RTE.	SECTION	COUNTY	TOTAL SHEETS	SHEET NO.
735	7B-1)BDR-1,BP,BRR,BJR	MACOUPIN	22	8
CONTRACT NO. 72669				
ILLINOIS FED. AID PROJECT				

ADVANCED WARNING
PER STANDARD 701321

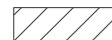







STAGE I TRAFFIC - PARTIAL PLAN



STAGE I TRAFFIC - PARTIAL PLAN

SYMBOLS

-  WORK AREA
-  DRUM WITH STEADY BURN BI-DIRECTIONAL LIGHT
-  TRAFFIC SIGNAL
-  TYPE III BARRICADE WITH FLASHING LIGHTS
-  TEMPORARY CONCRETE BARRIER
-  IMPACT ATTENUATOR

TRAFFIC CONTROL NOTES:

1. Traffic control devices not shown in this detail shall be per standard 701321. Devices and temporary pavement markings shown in this detail shall be included in the cost of TRAFFIC CONTROL AND PROTECTION, STANDARD 701321. Impact attenuators temporary rumble strips, temporary concrete barrier, and temporary traffic signals shall be paid separately.
2. Temporary concrete barrier offsets given in this detail refer to the edge of the barrier nearest to live traffic.
3. The private entrance at STA 387±75 shall remain closed for the duration of the project. Alternate access exists south of the construction zone.

MODEL: TC-1 (Sheet)
FILE NAME: c:\p\work\pav\tdudley\m116501472669_plansheet.dgn

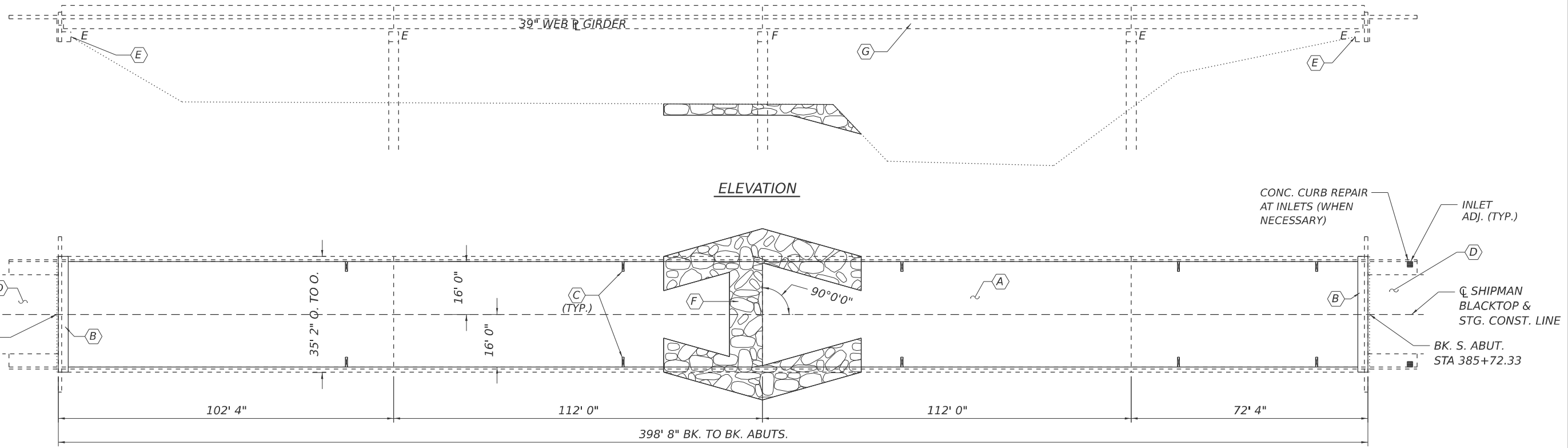
USER NAME = brandon.dudley	DESIGNED -	REVISED -
	DRAWN -	REVISED -
	CHECKED -	REVISED -
PLOT DATE = 1/5/2026	DATE -	REVISED -

**STATE OF ILLINOIS
DEPARTMENT OF TRANSPORTATION**

STAGE I TRAFFIC CONTROL

SCALE: SHEET 2 OF 3 SHEETS STA. TO STA.

F.A.S RTE.	SECTION	COUNTY	TOTAL SHEETS	SHEET NO.
735	7B-1)BDR-1,BP,BRR,BJR	MACOUPIN	22	9
CONTRACT NO. 72669				
ILLINOIS FED. AID PROJECT				



CONC. CURB REPAIR AT INLETS (WHEN NECESSARY)

INLET ADJ. (TYP.)

CL SHIPMAN BLACKTOP & STG. CONST. LINE

BK. S. ABUT. STA 385+72.33

STRUCTURE GENERAL NOTES

Reinforcement bars designated (E) shall be epoxy coated.

Plan dimensions and details relative to the existing structure have been taken from existing plans are subject to nominal construction variations. The Contractor shall field verify existing dimensions and details affecting new construction and make necessary approved adjustments prior to construction or ordering of materials. Such variations shall not be cause for additional compensation for a change in scope of the work, however, the Contractor will be paid for the quantity actually furnished at the unit price bid for the work.

Existing reinforcement shall be cleaned, straightened, and incorporated into the new construction. Cost included with Concrete Removal.

Cleaning and painting of the existing structural steel shall be as specified in the special provision for "Cleaning and Painting Existing Steel Structures". All existing steel shall be cleaned per Near White Blast Cleaning - SSPC-SP10. All existing steel shall be painted according to the requirements of Paint System 1 - OZ/E/U. The color of the final finish coat for all steel surfaces shall be Gray, Munsell No. 5B 7/1.

Containment of cleaning residue is required to control nuisance dust. See special provisions.

SSPC QP1 Contractor Certification is required for this Contract.

Joint openings shall be adjusted according to Article 520.04 of the Standard Specifications when the deck is poured at an ambient temperature other than 50° F.

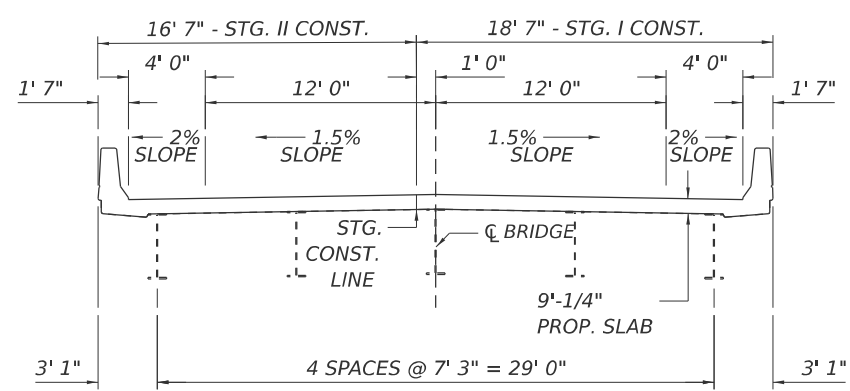
Prior to pouring the new concrete deck, all heavy or loose rust, loose mill scale, and other loose detrimental foreign material shall be removed from the surfaces in contact with concrete (SSPC-SP3 standards). Tightly adhered paint may remain unless otherwise noted. Removal shall be accomplished by methods that will not damage the steel and the cost will be paid for according to Article 109.04 of the Standard Specifications.

Existing drainage scuppers shall be removed and replaced in their existing locations. Scuppers shall be removed via full depth patches, cost included with DECK SLAB REPAIR (FULL DEPTH, TYPE II).

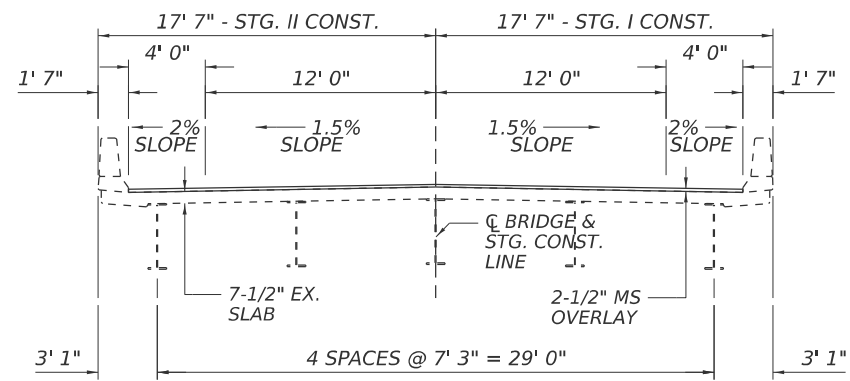
Eroded areas around pier 2 shall be filled with riprap. Minor grading around these areas may be necessary to facilitate drainage. Cost of grading to be included with STONE DUMPED RIPRAP, CLASS A4. No filter fabric or bedding material shall be required.

Synthetic fibers will not be required in the microsilica concrete overlay.

Protective coat shall be applied to the finished surfaces of all new concrete areas and the deck and approach slab repairs.



CROSS SECTION AT JOINTS
(LOOKING SOUTH)



CROSS SECTION ON DECK
(LOOKING SOUTH)

- (A) - Scarify 3/4" & place 2-1/2" microsilica overlay, FD patching as necessary.
- (B) - Remove & replace expansion joint.
- (C) - Remove & replace drainage scuppers.
- (D) - Approach slab patching.
- (E) - Concrete repair.
- (F) - Install riprap in eroded areas.
- (G) - Blast and repaint superstructure.

TOTAL BILL OF MATERIAL (059-0049)

ITEM	UNIT	QUANTITY
Concrete Removal	Cu. Yd.	9.0
Concrete Superstructure	Cu. Yd.	10.0
Reinforcement Bars, Epoxy Coated	Pound	1610
Bar Splicers	Each	24
Preformed Joint Strip Seal	Foot	68
Approach Slab Repair (Partial Depth)	Sq. Yd.	48
Deck Slab Repair (Full Depth, Type II)	Sq. Yd.	46
Drainage Scuppers, DS-33	Each	10
Bridge Deck Scarification 3/4"	Sq. Yd.	1390
Bridge Deck Microsilica Concrete Overlay 2-1/2"	Sq. Yd.	1390
Bridge Deck Grooving	Sq. Yd.	1317
Protective Coat	Sq. Yd.	1419
Structural Repair Of Concrete (Depth Equal To Or Less Than 5")	Sq. Ft.	35
Inlets To Be Adjusted With New Frame And Grate (Special)	Each	2
Stone Dumped Riprap, Class A4	Ton	150
Containment And Disposal Of Non-Lead Paint Cleaning Residues No. 1	L Sum	1
Cleaning And Painting Steel Bridge No. 1	L Sum	1
Concrete Curb Repair	Foot	10



Expires November 30, 2026

Justin W. Mann

MODEL: bridge (Sheet) FILE NAME: c:\p\work\wv\diverenski\185014172669_plansheet.dgn

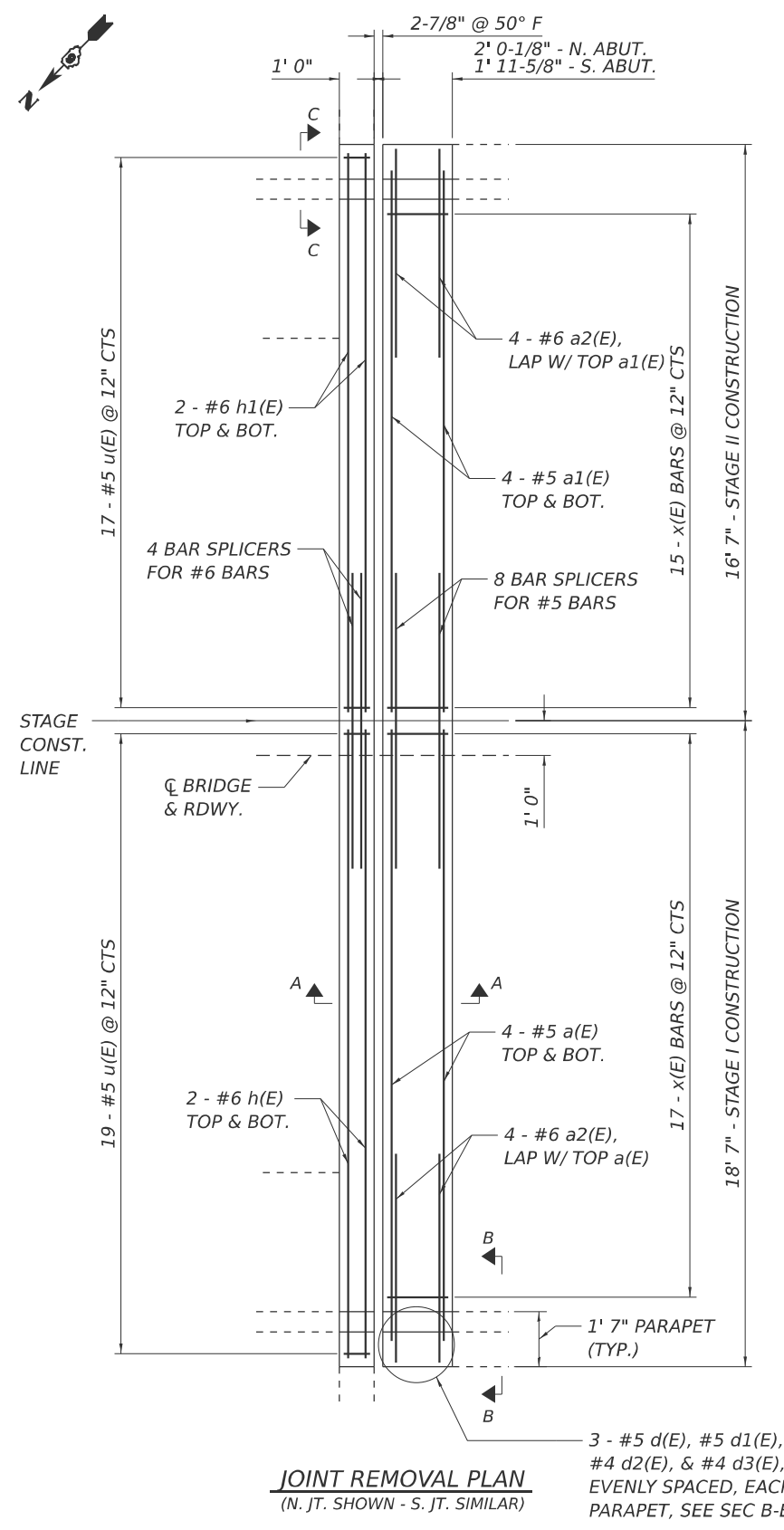
USER NAME = frank.verenski	DESIGNED - BRANDON DUDLEY	REVISED -
	DRAWN - BRANDON DUDLEY	REVISED -
	CHECKED -	REVISED -
PLOT DATE = 1/6/2026	DATE -	REVISED -

STATE OF ILLINOIS
DEPARTMENT OF TRANSPORTATION

BRIDGE PLAN & ELEVATION
SN 059-0049

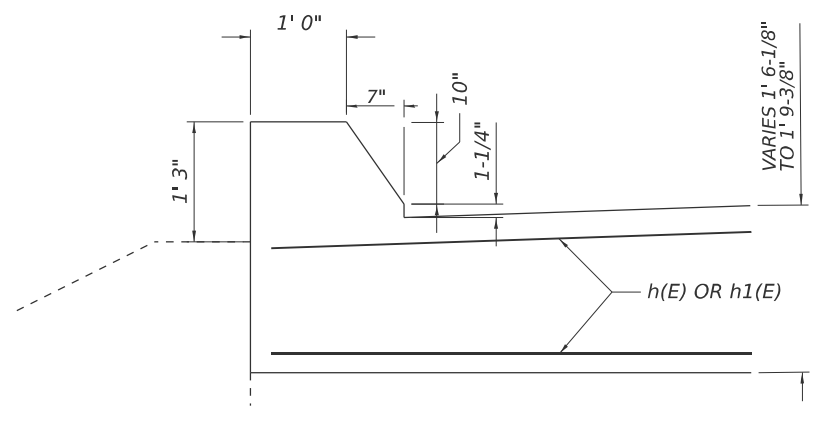
SCALE: SHEET 1 OF 12 SHEETS STA. TO STA.

F.A.S RTE.	SECTION	COUNTY	TOTAL SHEETS	SHEET NO.
735	(7B-1)BDR-1,BP,BRR,BJR	MACOUPIN	22	11
CONTRACT NO. 72669			ILLINOIS FED. AID PROJECT	

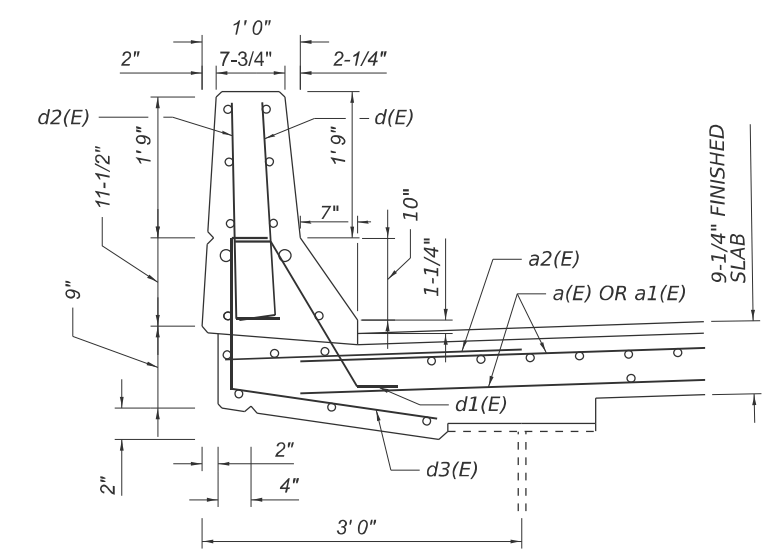


JOINT REMOVAL PLAN
(N. JT. SHOWN - S. JT. SIMILAR)

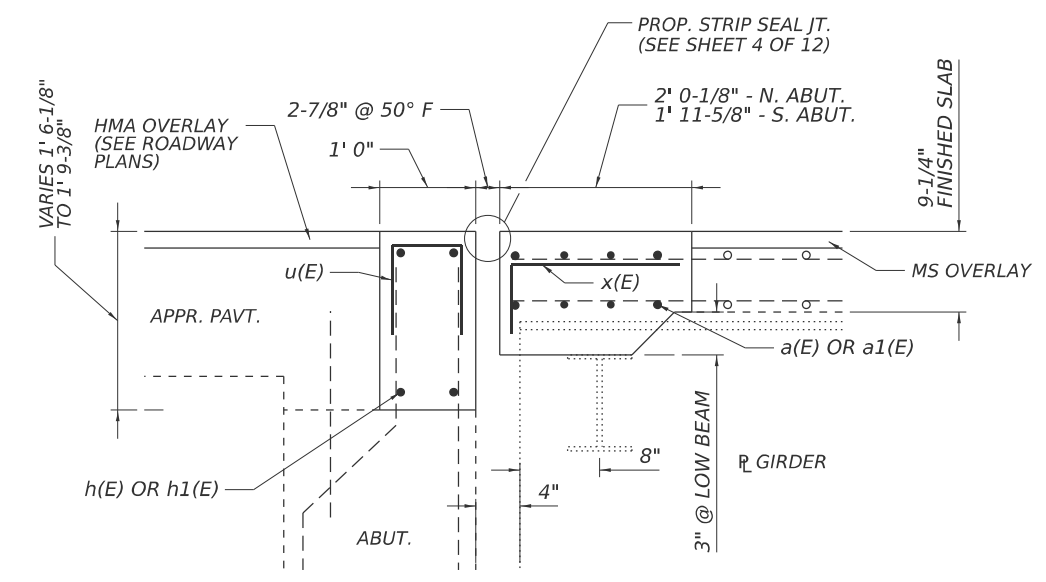
3 - #5 d(E), #5 d1(E), #4 d2(E), & #4 d3(E), EVENLY SPACED, EACH PARAPET, SEE SEC B-B



SECTION C-C

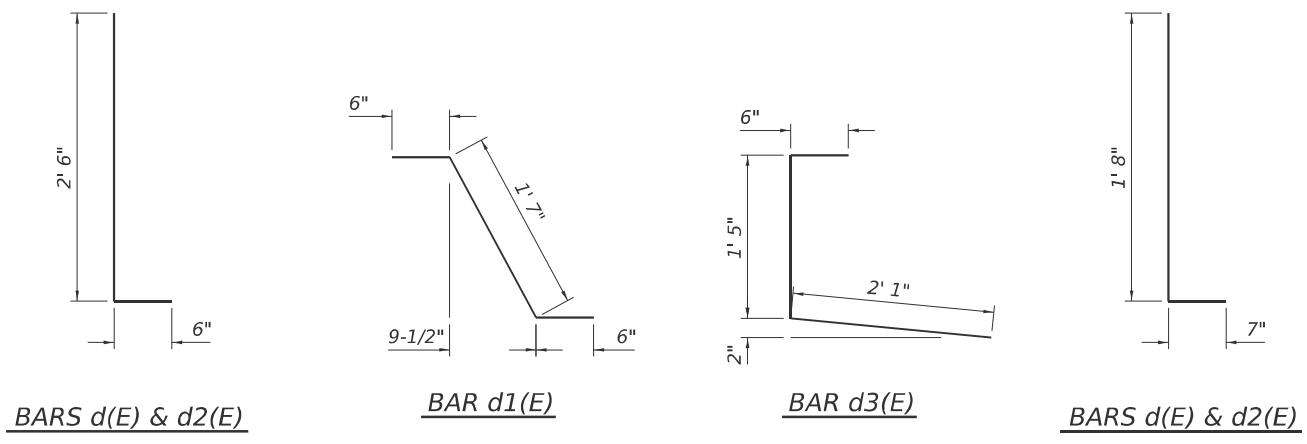
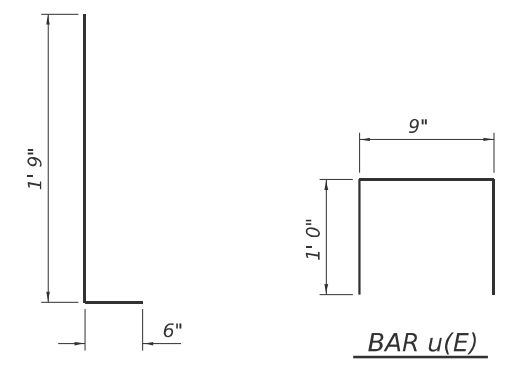


SECTION B-B



SECTION A-A

NOTE: DIMENSIONS BASED ON ROLLED RAIL JOINT (SEE SHEET 4 OF 12)



**ABUTMENT JOINTS
BILL OF MATERIAL (2 JOINTS)**

Bar	No.	Size	Length	Shape
a(E)	16	#5	17'-10"	—
a1(E)	16	#5	15'-10"	—
a2(E)	16	#6	6'-0"	—
d(E)	12	#5	3'-0"	┘
d1(E)	12	#5	2'-7"	┘
d2(E)	12	#4	3'-0"	┘
d3(E)	12	#4	4'-0"	┘
h(E)	8	#6	18'-3"	—
h1(E)	8	#6	16'-3"	—
u(E)	72	#5	2'-9"	┘
x(E)	64	#5	2'-3"	┘
Concrete Removal		Cu. Yd.	9.0	
Concrete Superstructure Reinforcement Bars, Epoxy Coated		Pound	1610	
Bar Splicers		Each	24	

MODEL: bridge-2 (Sheet)
FILE NAME: c:\p\work\bridge\verensk\ad1185014172669.plansheet.dgn

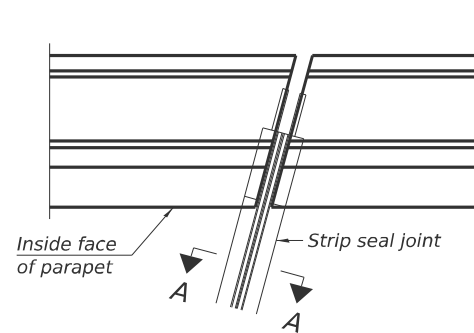
USER NAME = frank.verenski	DESIGNED -	REVISED -
	DRAWN -	REVISED -
	CHECKED -	REVISED -
PLOT DATE = 1/6/2026	DATE -	REVISED -

**STATE OF ILLINOIS
DEPARTMENT OF TRANSPORTATION**

**BRIDGE JOINT DETAILS
SN 059-0049**

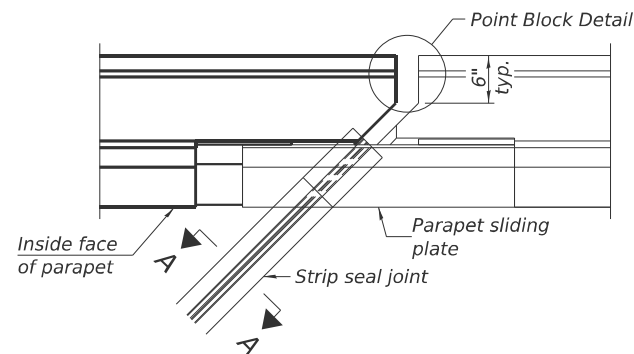
SCALE: SHEET 3 OF 12 SHEETS STA. TO STA.

F.A.S RTE.	SECTION	COUNTY	TOTAL SHEETS	SHEET NO.
735	(7B-1)BDR-1,BP,BRR,BJR	MACOUPIN	22	13
CONTRACT NO. 72669			ILLINOIS FED. AID PROJECT	

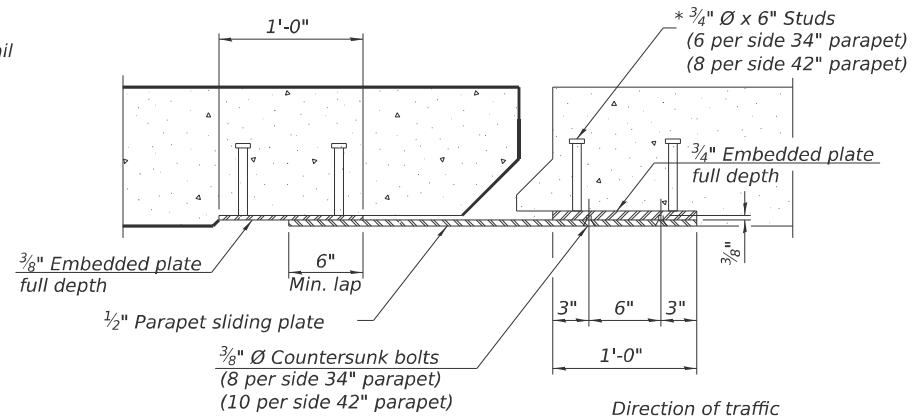


FOR SKEWS $\leq 30^\circ$

PLAN AT PARAPET



FOR SKEWS $> 30^\circ$



SECTION B-B

Notes:

The strip seal shall be made continuous and shall have a minimum thickness of 1/4 inch. The configuration of the strip seal shall match the configuration of the locking edge rails. Open or "webbed" strip seal gland configurations are not permitted. The gland shall be sized for a maximum rated movement of 4 inches.

The locking edge rails depicted are configured for typical applications and are conceptual only. The actual configuration of the locking edge rails and matching strip seal may vary from manufacturer to manufacturer provided they fit the application and meet the minimum anchorage shown. Flanged edge rails, however, will not be allowed. Locking edge rails may exceed the 4 1/2 inch maximum depth provided the anchorage system is revised according to the manufacturer's recommendation.

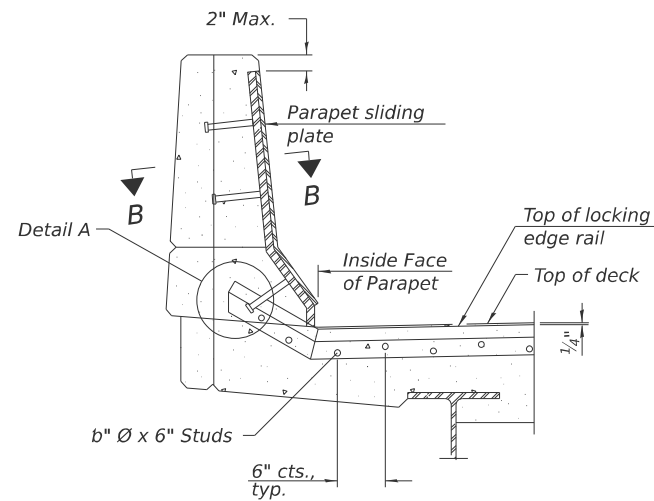
The manufacturer's recommended installation methods shall be followed.

All steel components shall be galvanized after fabrication according to Article 520.03 of the Standard Specifications.

The Maximum space between locking edge rail segments shall be 1/4 inch and sealed with a suitable sealant; however, any rail joint within 10 feet measured perpendicular to the face of the curb or parapet shall be welded as shown in the locking edge rail splice detail.

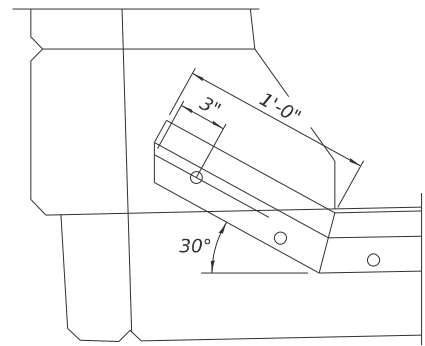
Cost of parapet sliding plates, embedded plates, and anchorage studs included with Preformed Joint Strip Seal. 34 inch F-shape barrier shown, 42 inch F-shape similar as noted.

The concrete opening below the strip seal will vary based on the locking edge rail chosen by the Contractor. Deck and parapet lengths shown elsewhere in the plans are dimensioned to the concrete opening, not the joint opening, and are based on the rolled locking edge rail. If the Contractor elects to use a different locking edge rail, dimensional adjustments may be required. One exception to this would be the strip seal joint at the end of the precast bridge approach slab. For these cases the pavement connector length shall be adjusted, not the length of the bridge approach slab.

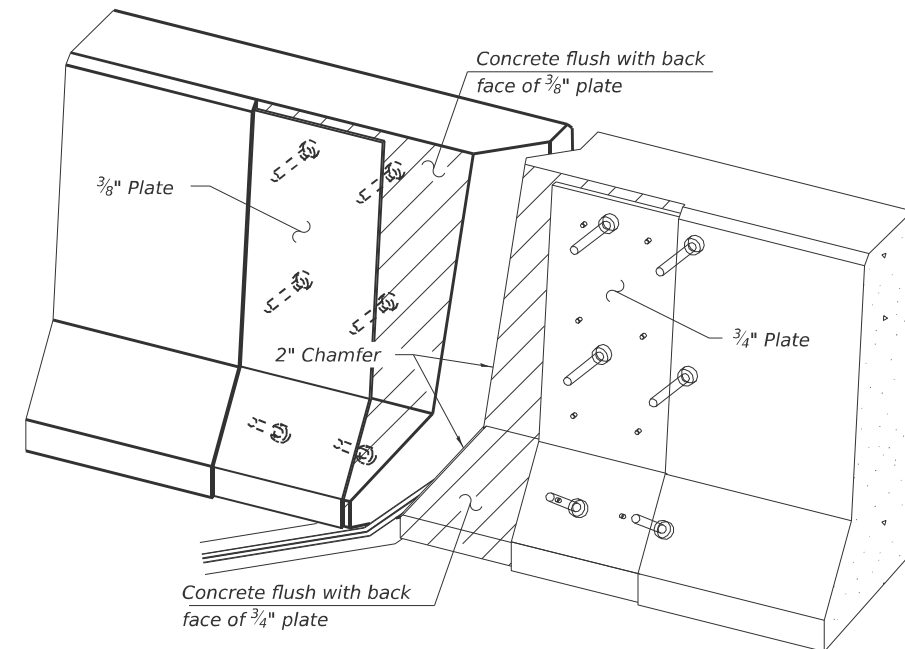


ELEVATION AT PARAPET

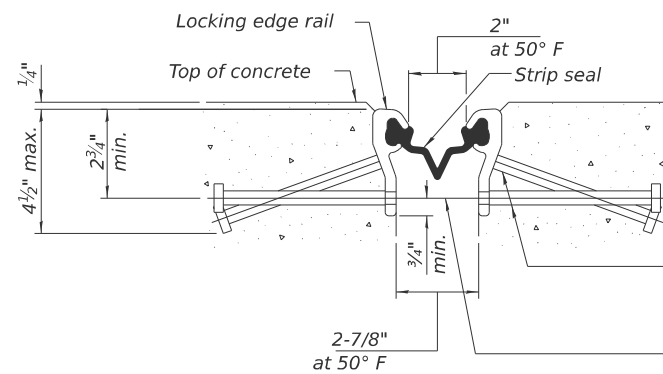
(Skews $> 30^\circ$ shown. Skews $\leq 30^\circ$ similar except as shown in plan view.)



DETAIL A



TRIMETRIC VIEW
(Showing embedded plates only)



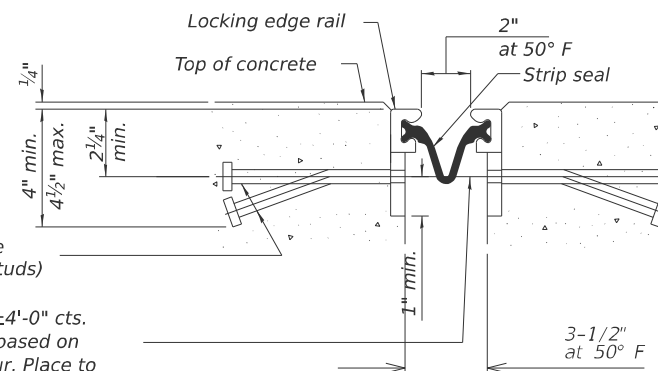
SHOWING ROLLED RAIL JOINT

* 5/8 inch diameter x 6 inch studs @ 6 inch cts. (alternate angled/bent studs with horizontal studs)

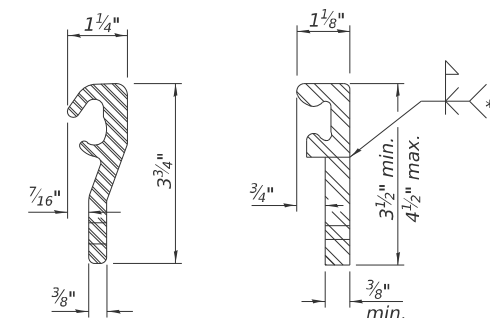
b inch diameter threaded rods in D inch diameter holes at $\pm 4'-0"$ cts. for holding the proper joint opening based on the temperature during the deck pour. Place to miss studs. All rods shall be burned, or sawed off flush with the plates after concrete is set.

SECTION A-A

* Granular or solid flux filled headed studs conforming to Article 1006.32 of the Std. Specs., automatically end welded.

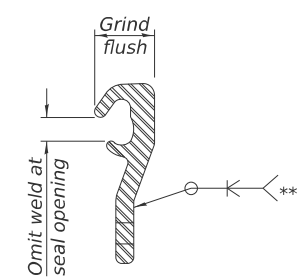


SHOWING WELDED RAIL JOINT



LOCKING EDGE RAILS

** Back gouge not required if complete joint penetration is verified by mock-up.



LOCKING EDGE RAIL SPLICE

The inside of the locking edge rail groove shall be free of weld residue. Rolled rail shown, welded rail similar.

BILL OF MATERIAL

Item	Unit	Total
Preformed Joint Strip Seal	Foot	68

EJ-SS

8-11-17

MODEL: bridge-3 (Sheet)
FILE NAME: c:\p\work\project\dudley\m118501\172669_plansheet.dgn

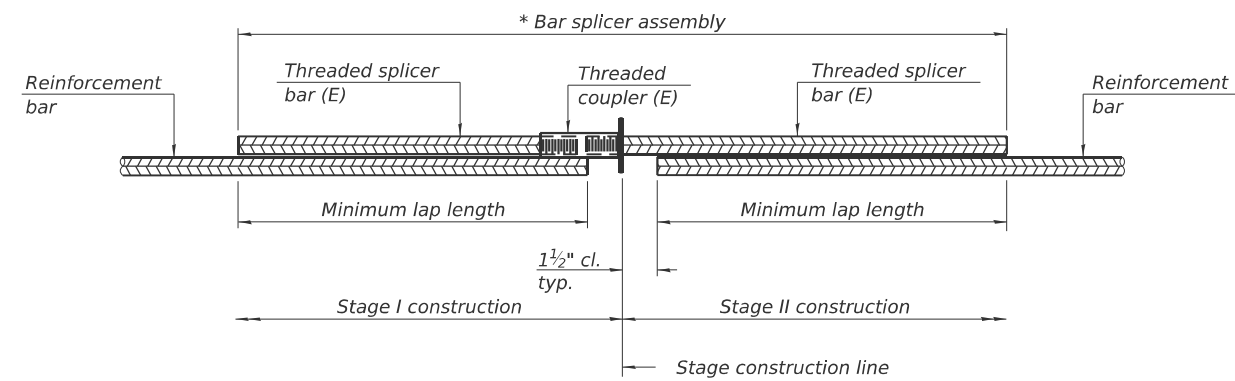
USER NAME = brandon.dudley	DESIGNED -	REVISED -
	DRAWN -	REVISED -
	CHECKED -	REVISED -
PLOT DATE = 1/5/2026	DATE -	REVISED -

STATE OF ILLINOIS
DEPARTMENT OF TRANSPORTATION

PREFORMED JOINT STRIP SEAL
SN 059-0049

SCALE: SHEET 4 OF 12 SHEETS STA. TO STA.

F.A.S RTE.	SECTION	COUNTY	TOTAL SHEETS	SHEET NO.
735	7B-1)BDR-1, BP, BRR, BJR	MACOUPIN	22	14
CONTRACT NO. 72669				
ILLINOIS FED. AID PROJECT				



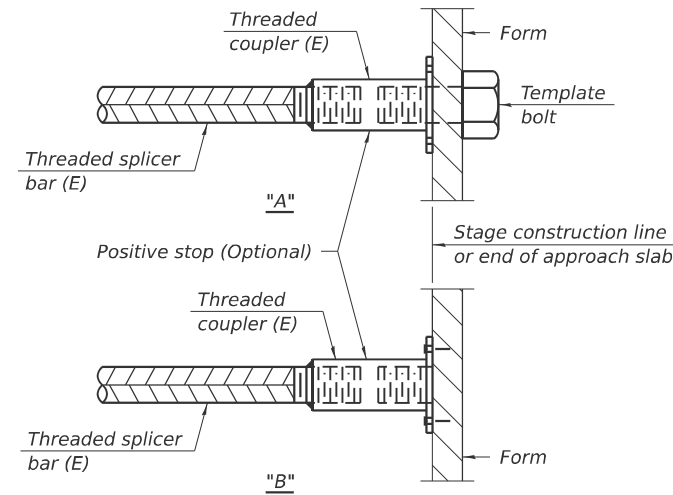
STANDARD BAR SPLICER ASSEMBLY PLAN

Only bar splicer assemblies as presented on the approved QPL list may be used.

Threaded splicer bar length = min. lap length + 1 1/2" + thread length

* Epoxy not required on Bar Splicer Assembly components used in conjunction with black bars.

Location	Bar size	No. assemblies required	Minimum lap length
Abut. Jts. (deck)	#5	16	3'-10"
Abut. Jts. (appr.)	#6	8	4'-5"

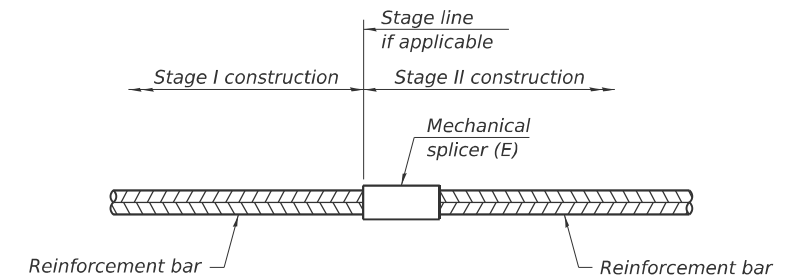


INSTALLATION AND SETTING METHODS

"A" : Set bar splicer assembly by means of a template bolt.

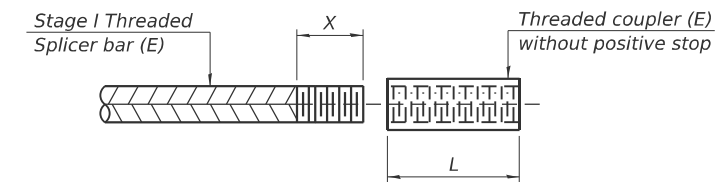
"B" : Set bar splicer assembly by nailing to wood forms or cementing to steel forms.

(E) : Indicates epoxy coating.



STANDARD MECHANICAL SPLICER

Location	Bar size	No. assemblies required



THREADING OF ASSEMBLIES

The threaded length "X" shall be no more than L/2. The bar should be tightened until 0-1 thread(s) is/are exposed.

Notes:

Splicer bars shall be deformed with threaded ends and have a minimum 60 ksi yield strength.

All reinforcement shall be lapped and tied to the splicer bars. Bar splicer assemblies shall be epoxy coated according to the requirements for reinforcement bars. See Section 508 of the Standard Specifications.

See approved list of bar splicer assemblies and mechanical splicers for alternatives.

MODEL: bridge-4 (Sheet)
FILE NAME: c:\p\work\project\dudley\m116501\172669_plansheet.dgn

BSD-1

4-4-2025

USER NAME = brandon.dudley	DESIGNED -	REVISED -
	DRAWN -	REVISED -
	CHECKED -	REVISED -
PLOT DATE = 1/5/2026	DATE -	REVISED -

**STATE OF ILLINOIS
DEPARTMENT OF TRANSPORTATION**

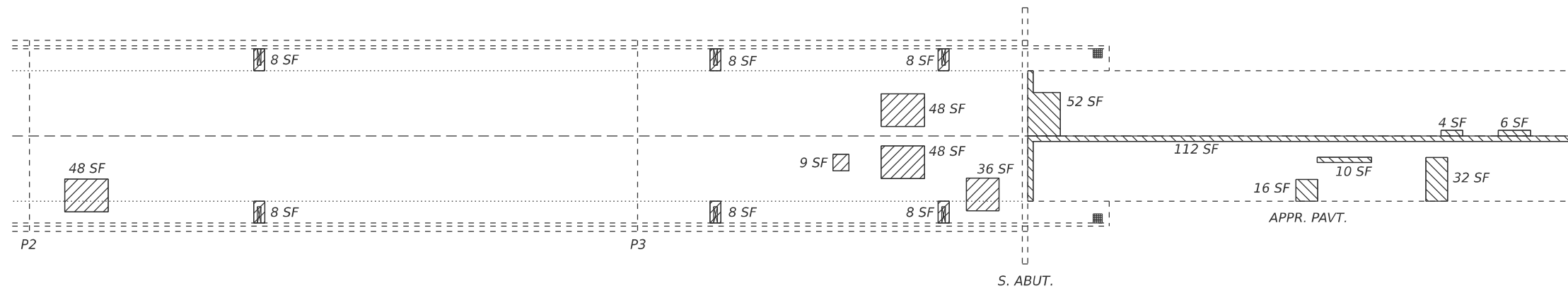
**BAR SPLICER ASSEMBLY AND MECHANICAL SPLICER DETAILS
SN 059-0049**

SCALE: SHEET 5 OF 12 SHEETS STA. TO STA.




F.A.S RTE.	SECTION	COUNTY	TOTAL SHEETS	SHEET NO.
735	7B-1)BDR-1, BP, BRR, BJR	MACOUPIN	22	15
CONTRACT NO. 72669				
ILLINOIS FED. AID PROJECT				



PARTIAL PLAN

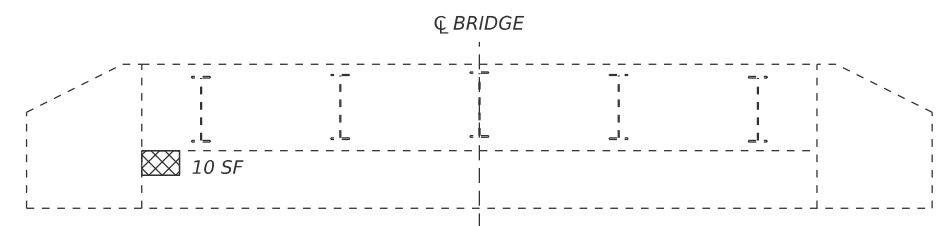


PARTIAL PLAN

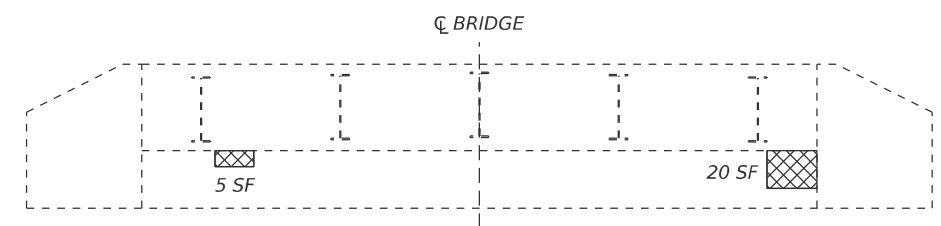
-  Deck Slab Repair (Full Depth, Type II)
-  Approach Slab Repair (Partial Depth)
-  Structural Repair Of Concrete (Depth Equal To Or Less Than 5")

Identified patching locations are estimated from a deck survey performed on 12/9/25. The patching survey is included for information only. The engineer shall lay out actual patch locations in the field.

The engineer shall show actual locations and sizes of deck repairs on as-built plans.



S. ABUT. ELEVATION



N. ABUT. ELEVATION

MODEL: bridge-5 (Sheet)
FILE NAME: c:\p\work\project\dudley\m116501\172669_plansheet.dgn

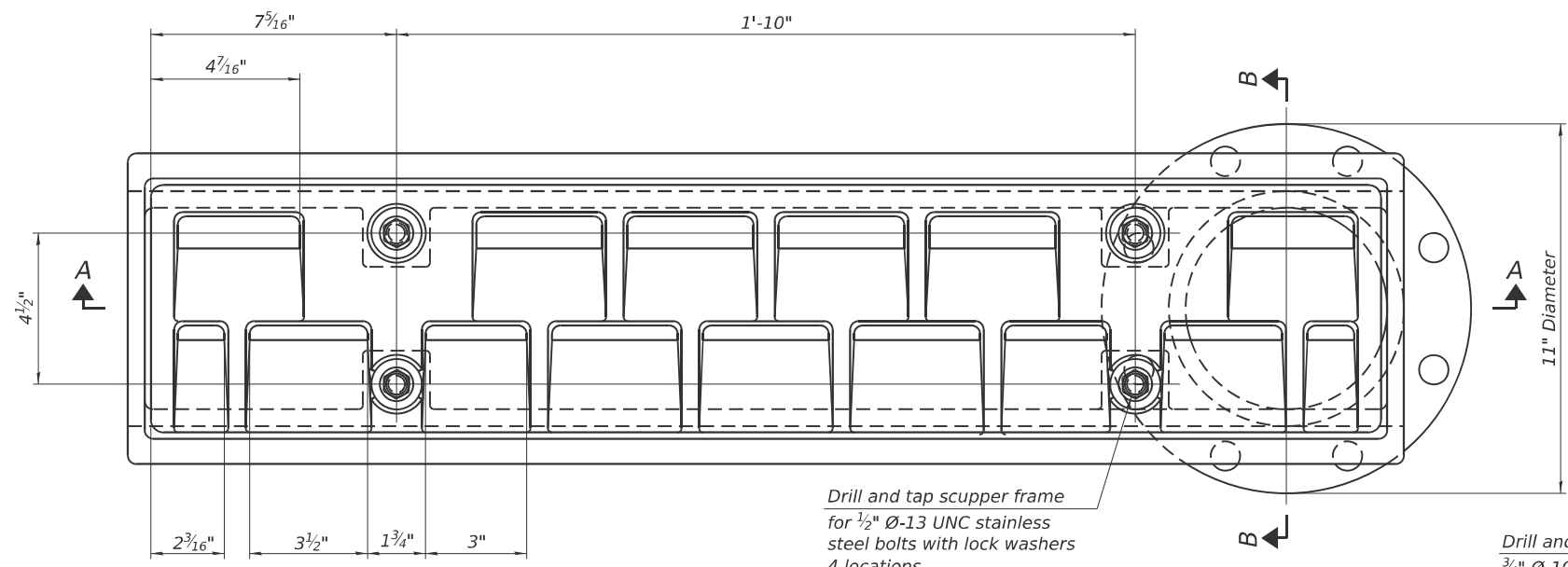
USER NAME = brandon.dudley	DESIGNED -	REVISED -
	DRAWN -	REVISED -
	CHECKED -	REVISED -
PLOT DATE = 1/5/2026	DATE -	REVISED -

**STATE OF ILLINOIS
DEPARTMENT OF TRANSPORTATION**

**MISCELLANEOUS CONCRETE REPAIR
SN 059-0049**

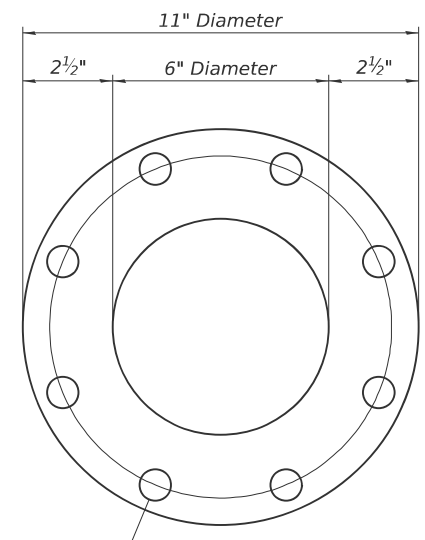
SCALE: SHEET 6 OF 12 SHEETS STA. TO STA.

F.A.S RTE.	SECTION	COUNTY	TOTAL SHEETS	SHEET NO.
735	7B-1)BDR-1, BP, BRR, BJR	MACOUPIN	22	16
CONTRACT NO. 72669				
ILLINOIS FED. AID PROJECT				



PLAN

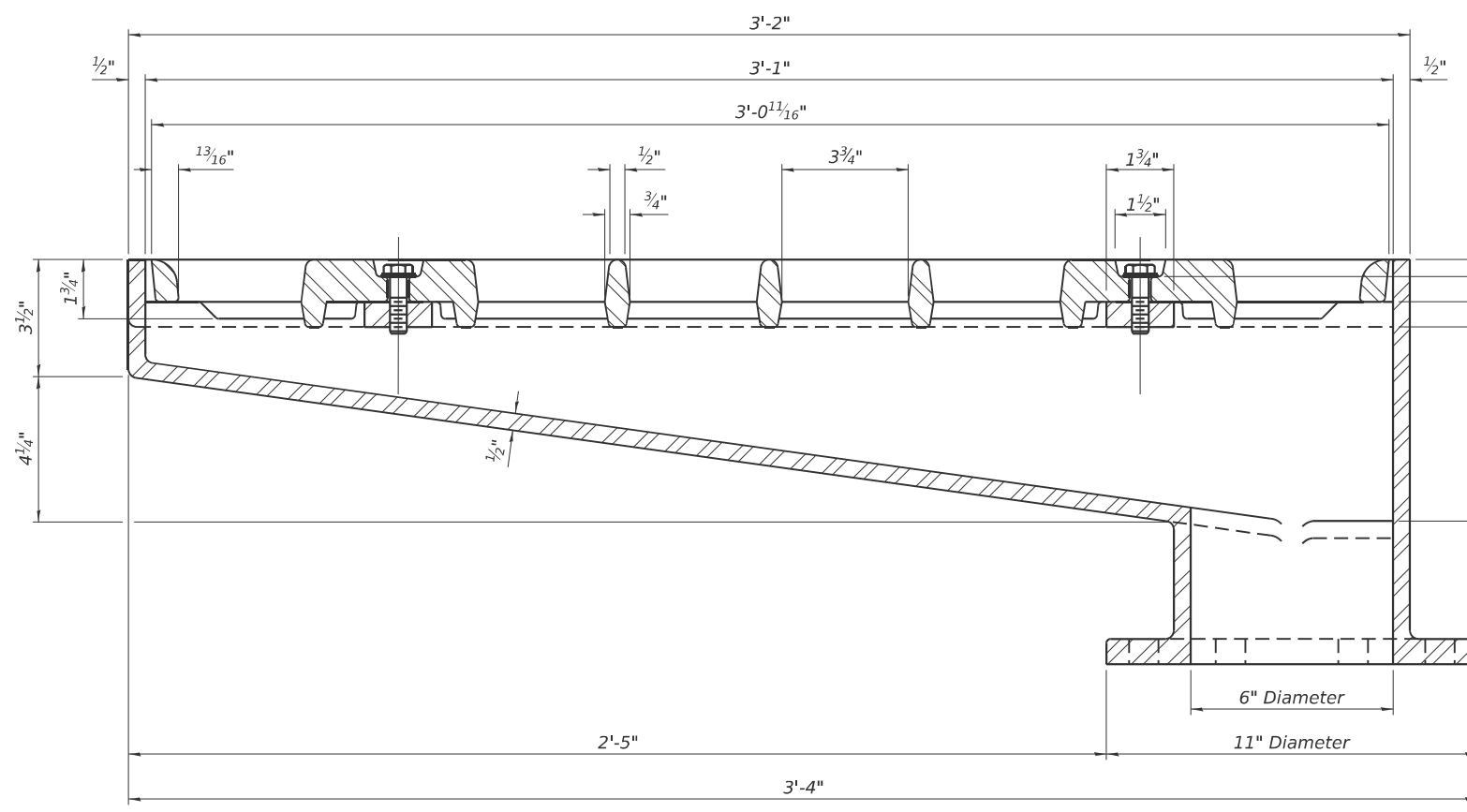
Drill and tap scupper frame for 1/2" Ø-13 UNC stainless steel bolts with lock washers 4 locations



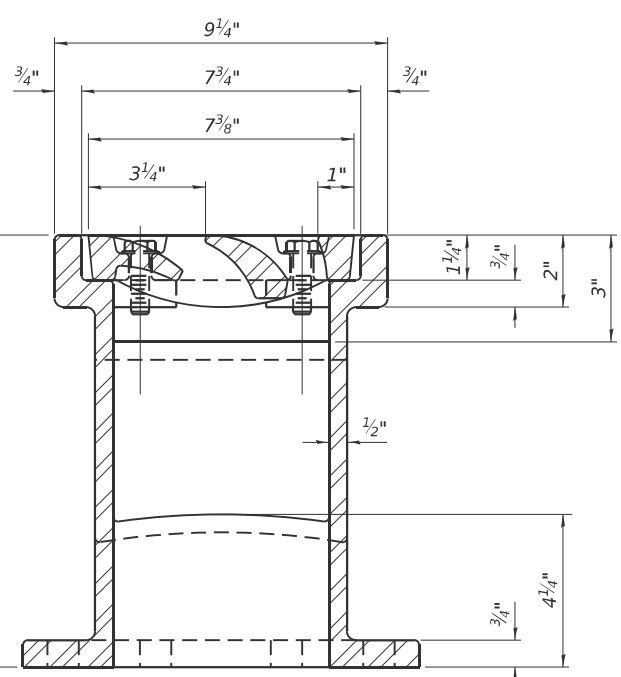
BOTTOM VIEW OF FLANGE ONLY

Drill and tap 8 holes for 3/4" Ø-10 UNC bolts on 9 1/2" Ø bolt circle.

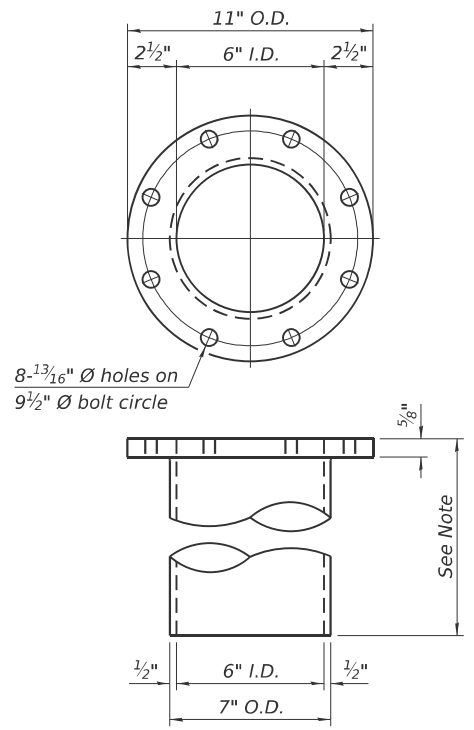
Notes:
 All cast iron parts shall be gray iron conforming to the requirements of AASHTO M105, Class 35B and AASHTO M306.
 Bolts, nuts and washers shall be according to ASTM A307 and shall be galvanized according to AASHTO M232. As an alternate stainless steel may be used.
 Stainless steel hardware shall be according to Article 1006.29(d) of the Standard Specifications.
 Structural steel weldments of equal sections and of the same configuration may be substituted for the cast iron scupper frames and downspouts; however, the scupper grates shall remain cast iron. Fillet or full penetration welds shall be used for the weldments. Details shall be submitted to the Engineer for approval.
 Structural steel scupper frames and downspouts, when utilized, shall be galvanized according to AASHTO M111.
 As an alternate, fiberglass may be used for downspouts according to ASTM D2996 with a short-time rupture strength hoop tensile stress of 30,000 psi min. in lieu of the cast iron or structural steel.
 Exterior surfaces of downspouts and exterior exposed surfaces of the scupper frame below deck shall be treated as specified on sheet of .
 The Contractor shall take appropriate measures to assure that Protective Coat is not applied to the scupper.
 Cost of the grate, frame, downspout, nuts and washers including complete installation of the scupper shall be paid for at the contract unit price for Drainage Scuppers, DS-33.
 The downspout shall extend a minimum of 6" below the bottom flange of the adjacent beam.



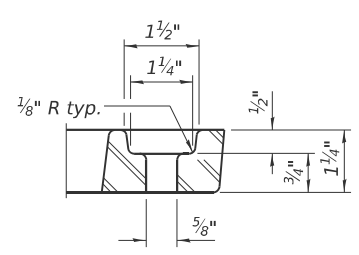
SECTION A-A
 See sheet of for scupper location relative to parapet.



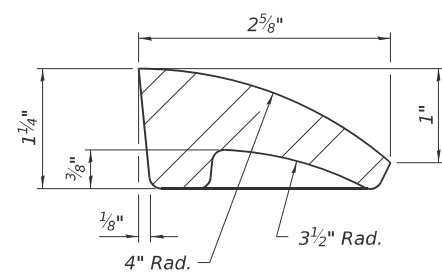
SECTION B-B



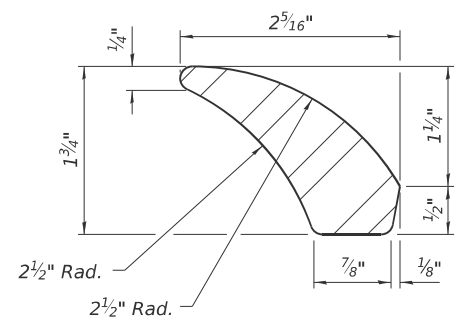
DOWNSPOUT



GRATE BOLT HOLE DETAIL



FIRST VANE DETAIL



SECOND VANE DETAIL

BILL OF MATERIAL

Item	Unit	Quantity
Drainage Scuppers, DS-33	Each	10

MODEL: bridge-6 (Sheet)
 FILE NAME: c:\ppl\work\pwr\scupper\dm118501\172669.plansheet.dgn

DS-33

4-4-2025

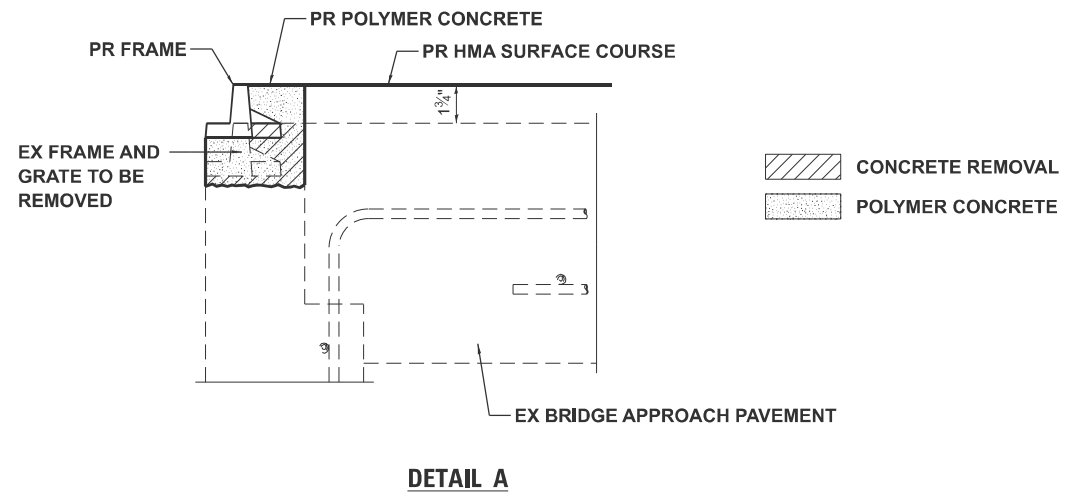
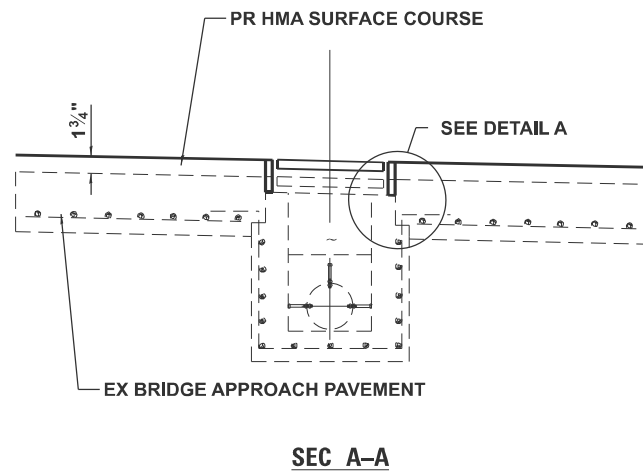
USER NAME = brandon.dudley	DESIGNED -	REVISED -
	DRAWN -	REVISED -
	CHECKED -	REVISED -
PLOT DATE = 1/5/2026	DATE -	REVISED -

**STATE OF ILLINOIS
 DEPARTMENT OF TRANSPORTATION**

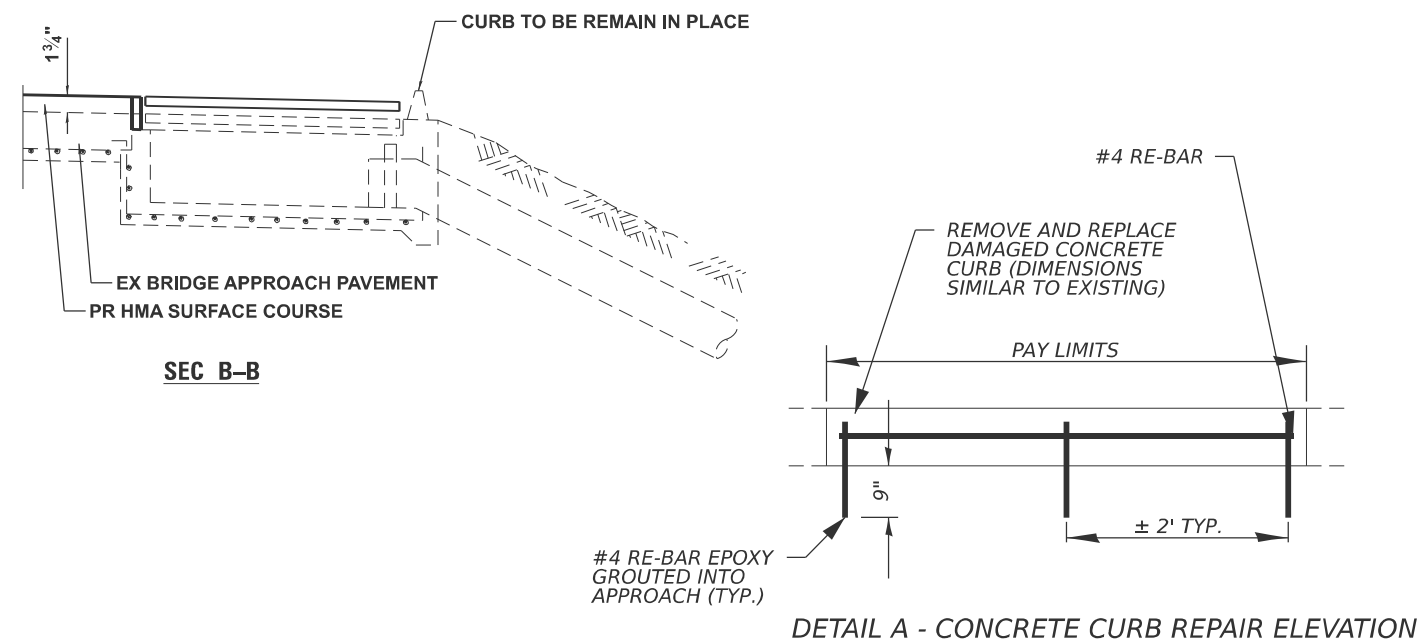
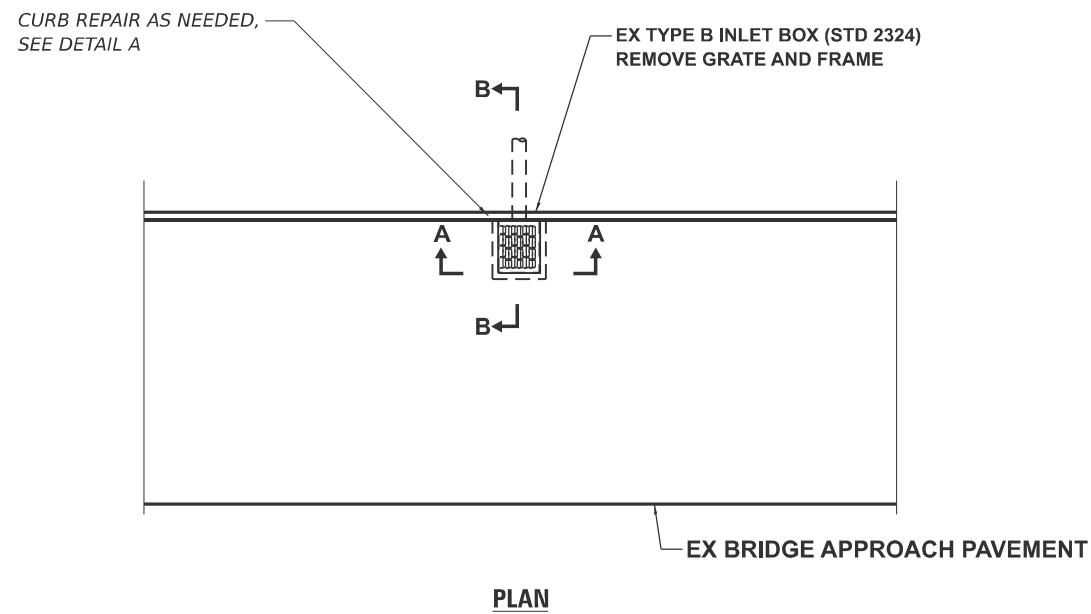
**DRAINAGE SCUPPERS, DS-33
 SN 059-0049**

SCALE: SHEET 7 OF 12 SHEETS STA. TO STA.

F.A.S. RTE.	SECTION	COUNTY	TOTAL SHEETS	SHEET NO.
735	7B-1)BDR-1.BP,BRR,BJR	MACOUPIN	22	17
			CONTRACT NO. 72669	
ILLINOIS FED. AID PROJECT				



GENERAL NOTES
 THE CONTRACTOR SHALL FURNISH AND INSTALL
 A NEW CAST FRAME AND CAST GRATE AS
 SPECIFIED ON STANDARD 610001 FOR THE
 TYPE G INLET BOX



MODEL: bridge-7 (Sheet)
 FILE NAME: c:\p\work\pav\inlet\inlet.dwg\mtd1165014172669_plansheet.dgn

USER NAME = brandon.dudley	DESIGNED -	REVISED -
	DRAWN -	REVISED -
	CHECKED -	REVISED -
PLOT DATE = 1/21/2026	DATE -	REVISED -

STATE OF ILLINOIS
 DEPARTMENT OF TRANSPORTATION

INLET ADJUSTMENT DETAIL
 SN 059-0049

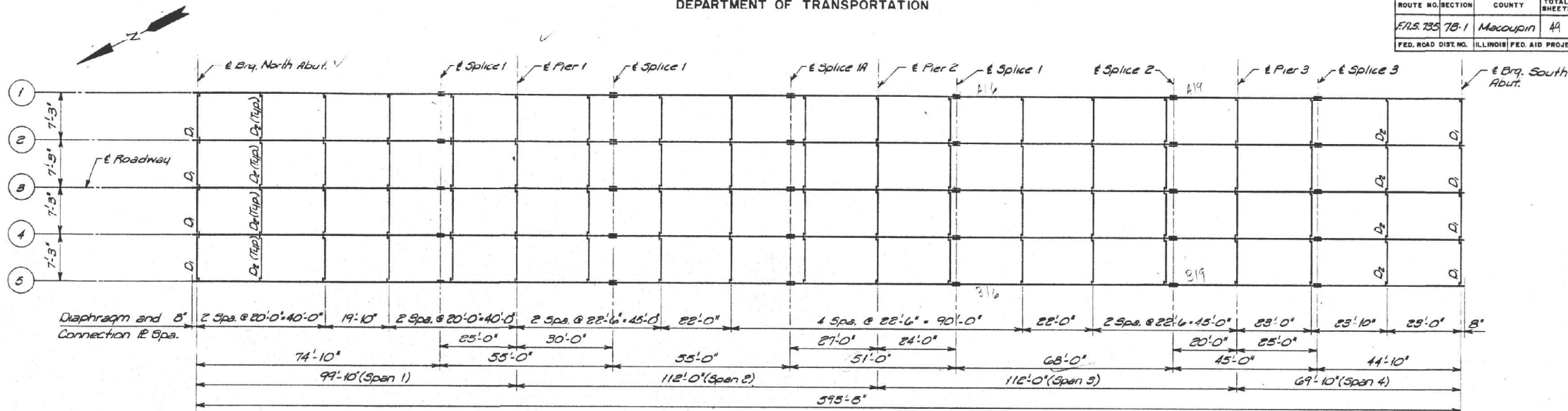
SCALE: SHEET 8 OF 12 SHEETS STA. TO STA.

F.A.S RTE.	SECTION	COUNTY	TOTAL SHEETS	SHEET NO.
735	(7B-1)BDR-1,BP,BRR,BJR	MACOUPIN	22	18
CONTRACT NO. 72669				
ILLINOIS FED. AID PROJECT				

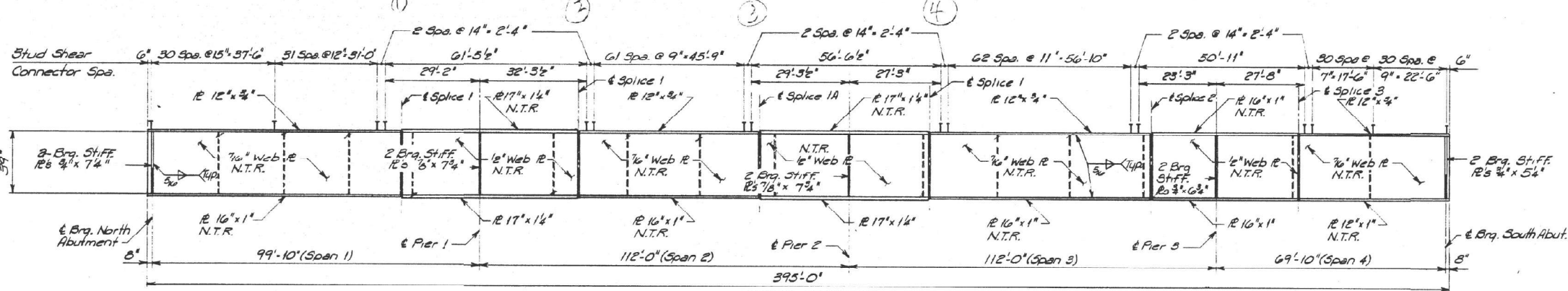
STATE OF ILLINOIS
DEPARTMENT OF TRANSPORTATION

ROUTE NO. SECTION	COUNTY	TOTAL SHEETS	SHEET NO.
F.R.S. 735 7B-1	Macoupin	49	17
FED. ROAD DIST. NO. ILLINOIS FED. AID PROJECT			

SHEET NO. 7
16 SHEETS



STRUCTURAL STEEL LAYOUT



GIRDER ELEVATION

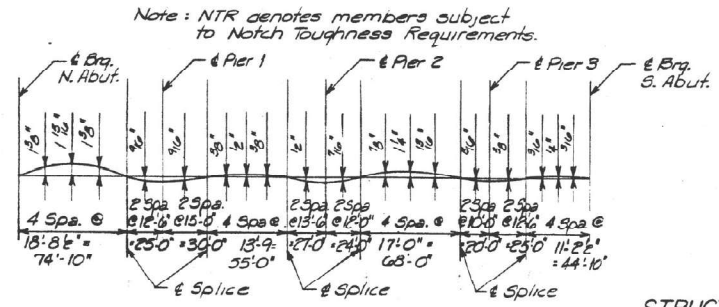
Flanges, webs & bearing stiffeners shall be M225 (Gr 50) steel.

INTERIOR GIRDER MOMENTS

	4 Span 1	Pier 1	5 Span 2	Pier 2	5 Span 3	Pier 3	6 Span 4
I _x (in ⁴)	11646	19690	11646	19690	11646	15275	10421
I _c (in ⁴)	33012		33012		33012		23098
S _x (in ³)	679.3	948.9	679.3	948.9	679.3	745.1	551.6
S _c (in ³)	945.1		945.1		945.1		776.7
D _x (%)	.89	1.235	.89	1.235	.89	1.235	.89
M _{ax} (k)	639.9	-1528.1	293.0	-1362.5	404.2	1083.7	833.8
S _{ax} (k)	.345		.345		.345		.345
M _{ax} (k)	290.7		193.2		249.2		115.4
M _{ax} (k)	863.2	-676.5	795.7	-680.2	807.5	-514.1	508.3
M _{imp} (k)	189.9	-148.8	173.0	-142.8	185.7	-118.2	130.7
S _b (M _u + I) (k)	1775.2	1375.5	1617.8	1371.7	1655.3	1053.8	1165.0
M _u (k)	5491.5	3774.7	2741.7	3254.5	3079.3	2778.8	1963.5
M _u (k)	2655.0		2655.0		2655.0		2417.0
f _s (non-comp) (ksi)	11.30	19.23	5.18	17.22	8.20	17.46	5.09
f _s (comp) (ksi)	3.69		2.52		3.16		1.78
f _s (M _u + I) (ksi)	22.34	17.4	20.55	17.35	21.02	16.97	18.0
f _s (overload) (ksi)	37.55	36.72	28.25	34.57	52.38	34.43	24.87
f _s (Total) (ksi)		47.74		44.95		44.75	
YR (k)	32.6		29.2		30.2		30.4

INTERIOR GIRDER REACTION

	N. Abut.	Pier 1	Pier 2	Pier 3	S. Abut.
R _{ax} (k)	48.0	148.6	139.3	126.2	29.4
R _{ay} (k)	42.3	69.8	69.8	62.6	40.3
R _{ax} (k)	9.3	15.4	14.7	14.4	9.3
R _{ay} (k)	99.6	233.8	223.8	203.2	79.0



CAMBER DIAGRAM

TOP OF WEB ELEVATIONS *

* For Fabrication only, does not include dead load deflection

Girder	@ Brq. N. Abut.	Span 1 Splice 1	Pier 1	Span 2 Splice 1A	Span 2 Splice 1B	Pier 2	Span 3 Splice 1	Span 3 Splice 2	Pier 3	Span 4 Splice 3	@ Brq. S. Abut.
1 & 5	539.253	539.159	538.977	538.924	538.754	538.687	538.102	538.465	538.323	538.201	538.168
2 & 4	539.480	539.235	539.104	539.051	538.881	538.764	538.774	538.592	538.151	538.312	538.295
3	539.793	539.998	539.217	539.164	538.994	538.877	538.857	538.701	538.168	538.501	538.408

Note: This drawing is not to scale. Follow dimensions.

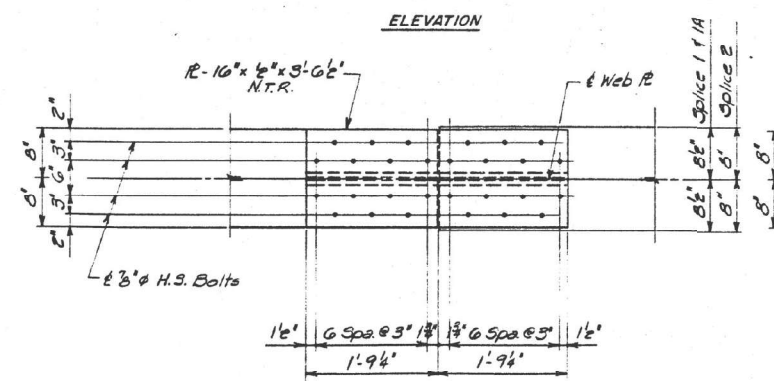
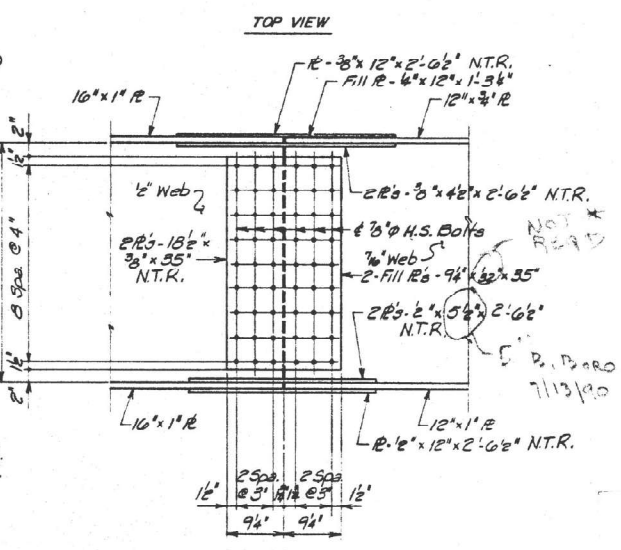
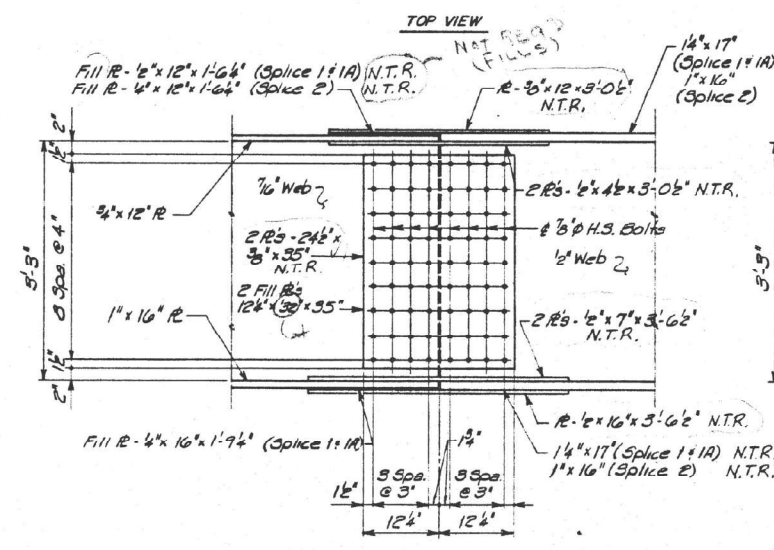
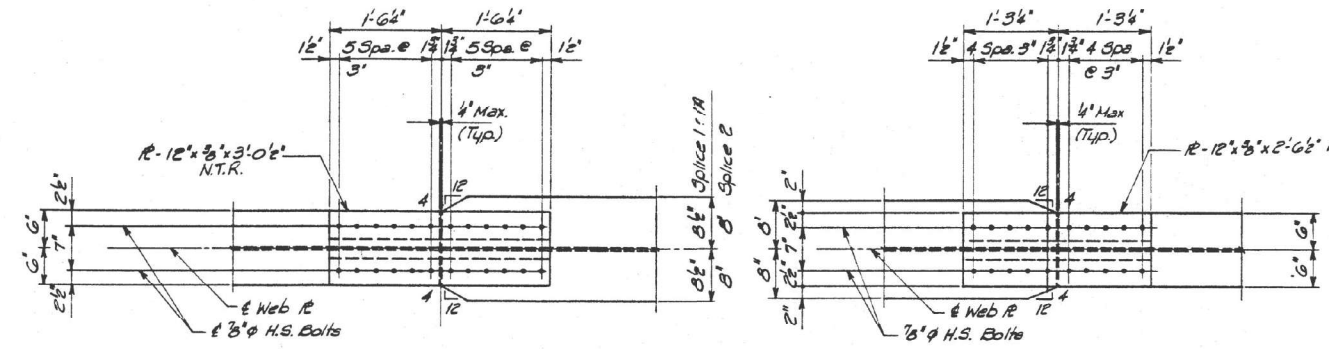
STRUCTURAL STEEL LAYOUT
SHIPMAN BLACKTOP OVER
MACOUPIN CREEK
F.A.S 735 SECTION 7B-1
MACOUPIN COUNTY
STA. 383+73
STRUCTURE NO. 059-0049

DESIGNED C. Whaley
CHECKED M. Buecher
DRAWN S. Wenkel
CHECKED G. Smith

MODEL: bridge-8 (Sheet)
FILE NAME: c:\p\work\bridge\verensk\fd118501472669_plansheet.dgn

STATE OF ILLINOIS
DEPARTMENT OF TRANSPORTATION

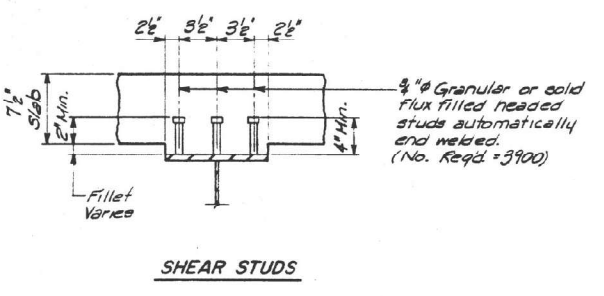
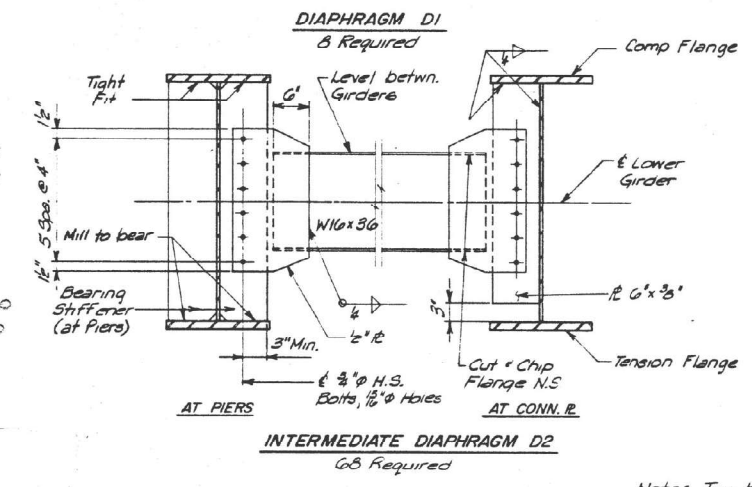
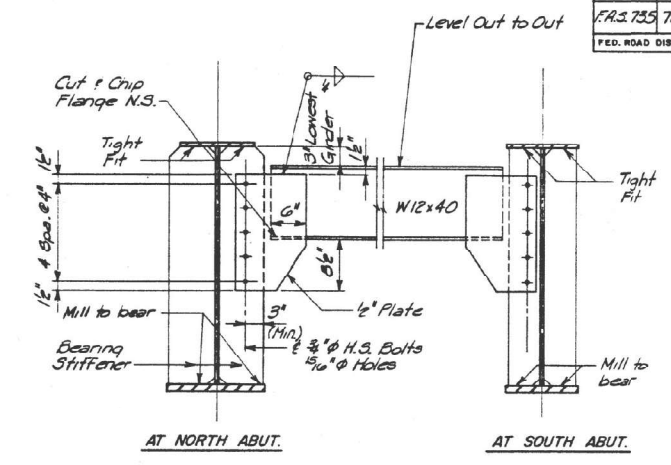
ROUTE NO. SECTION	COUNTY	TOTAL SHEETS	SHEET NO.	SHEET NO. C
FRS. 735 7B-1	Macoupin	49	10	10
FED. ROAD DIST. NO.	ILLINOIS FED. AID PROJECT			



SPLICE 1, 2 & 3

Note: All splice plate material is subject to Notch Toughness Requirements. (N.T.R.)
All splice plate material shall be M225 (Gr 50) steel.

Note: This drawing is not to scale. Follow dimensions.



Note: Two hardened washers shall be required over all 1/2\"/>

STRUCTURAL STEEL DETAILS
SHIPMAN BLACKTOP OVER
MACOUPIN CREEK
F.A.S. 735 SECTION 7B-1
MACOUPIN COUNTY
STA. 383+73
STRUCTURE NO. 059-0049

DESIGNED C. Whaley
CHECKED M. Buscher
DRAWN S. Henkel
CHECKED G. Smith

MODEL: bridge-9 (Sheet)
FILE NAME: c:\pwworking\brandon.dudley\dtd118501-172669-plansheet.dgn

USER NAME = brandon.dudley	DESIGNED -	REVISED -
	DRAWN -	REVISED -
	CHECKED -	REVISED -
PLOT DATE = 1/5/2026	DATE -	REVISED -

STATE OF ILLINOIS
DEPARTMENT OF TRANSPORTATION

EXISTING BRIDGE PLANS (FOR INFORMATION ONLY)
SN 059-0049

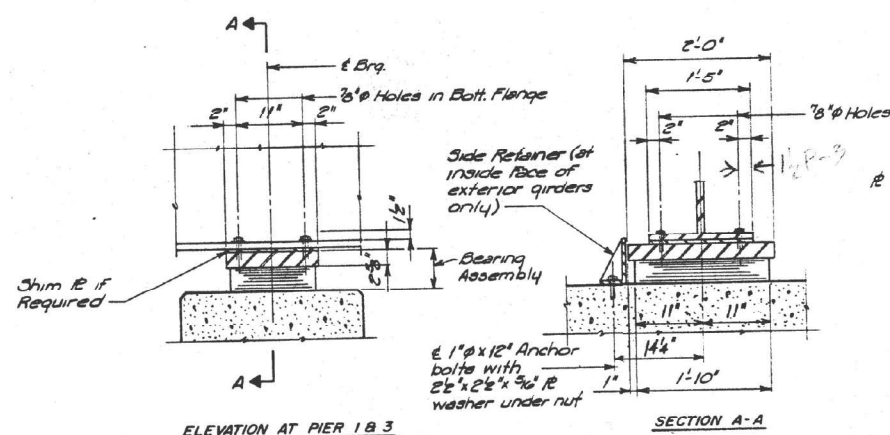
SCALE: SHEET 10 OF 12 SHEETS STA. TO STA.

F.A.S. RTE.	SECTION	COUNTY	TOTAL SHEETS	SHEET NO.
735	7B-1BDR-1.BP,BRR,BJR	MACOUPIN	22	20
CONTRACT NO. 72669				
ILLINOIS FED. AID PROJECT				

STATE OF ILLINOIS
DEPARTMENT OF TRANSPORTATION

ROUTE NO. SECTION	COUNTY	TOTAL SHEETS	SHEET NO.
F.A.S. 735 7B-1	Macoupin	49	20
FED. ROAD DIST. NO.	ILLINOIS FED. AID PROJECT		

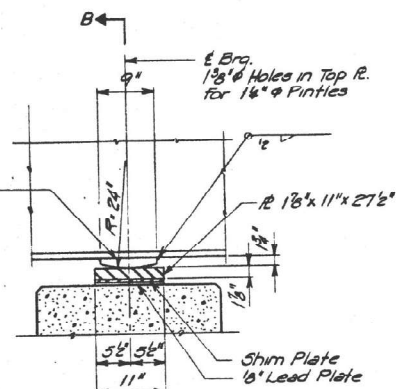
SHEET NO. 10
12 SHEETS



ELEVATION AT PIER 1 & 3

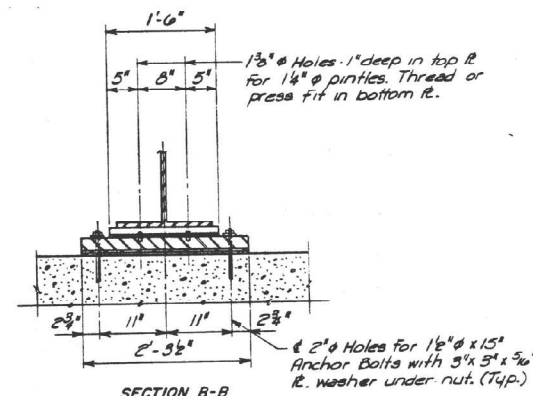
TYPE I ELASTOMERIC EXP. BRG.
(Piers 1 & 3)

Note: Anchor bolts at fixed B4 bearings may be built into the masonry. See sheet #11 for Anchor Bolt installation.

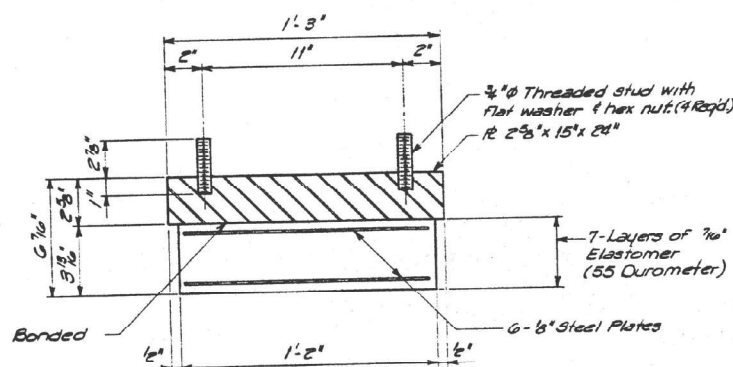


ELEVATION AT PIER 2

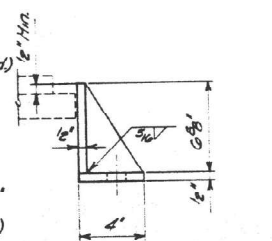
FIXED BEARING
(5 Required)
(at Pier 2)



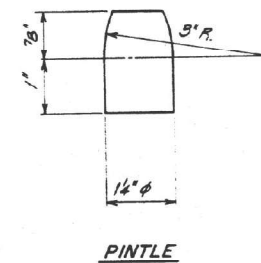
SECTION B-B



BEARING ASSEMBLY
Note: Shim plates shall not be placed under Bearing Assembly.



SIDE RETAINER
Equivalent rolled angle with stiffeners will be allowed in lieu of welded plates.



PINTLE

BILL OF MATERIAL

ITEM	UNIT	TOTAL
Elastomeric Bearing Assembly Type I	Each	10

Note: All bearing plates are A-223 Gr 50 Steel. See sheet 11 of 18 for anchor bolt installation. Anchor bolts of fixed bearings may be built into masonry.

ELASTOMERIC BEARINGS

SHIPMAN BLACKTOP OVER
MACOUPIN CREEK
F.A.S. 735 SECTION 7B-1
MACOUPIN COUNTY
STA. 383+73
STRUCTURE NO. 059-0049

DESIGNED C. Whaley
CHECKED N. Buscher
DRAWN S. Wenkel
CHECKED G. Smith

Note: This drawing is not to scale. Follow dimensions.

MODEL: Bridge-11 (Sheet)
FILE NAME: c:\p\work\wv\tothverensk\ad1185014172669_plansheet.dgn

USER NAME = frank.verenski	DESIGNED -	REVISED -
	DRAWN -	REVISED -
	CHECKED -	REVISED -
PLOT DATE = 1/6/2026	DATE -	REVISED -

STATE OF ILLINOIS
DEPARTMENT OF TRANSPORTATION

EXISTING BRIDGE PLANS (FOR INFORMATION ONLY)
SN 059-0049

SCALE: SHEET 12 OF 12 SHEETS STA. TO STA.

F.A.S. RTE.	SECTION	COUNTY	TOTAL SHEETS	SHEET NO.
735	(7B-1)BDR-1,BP,BRR,BJR	MACOUPIN	22	22
CONTRACT NO. 72669				
ILLINOIS FED. AID PROJECT				