

STATE OF ILLINOIS
DEPARTMENT OF TRANSPORTATION

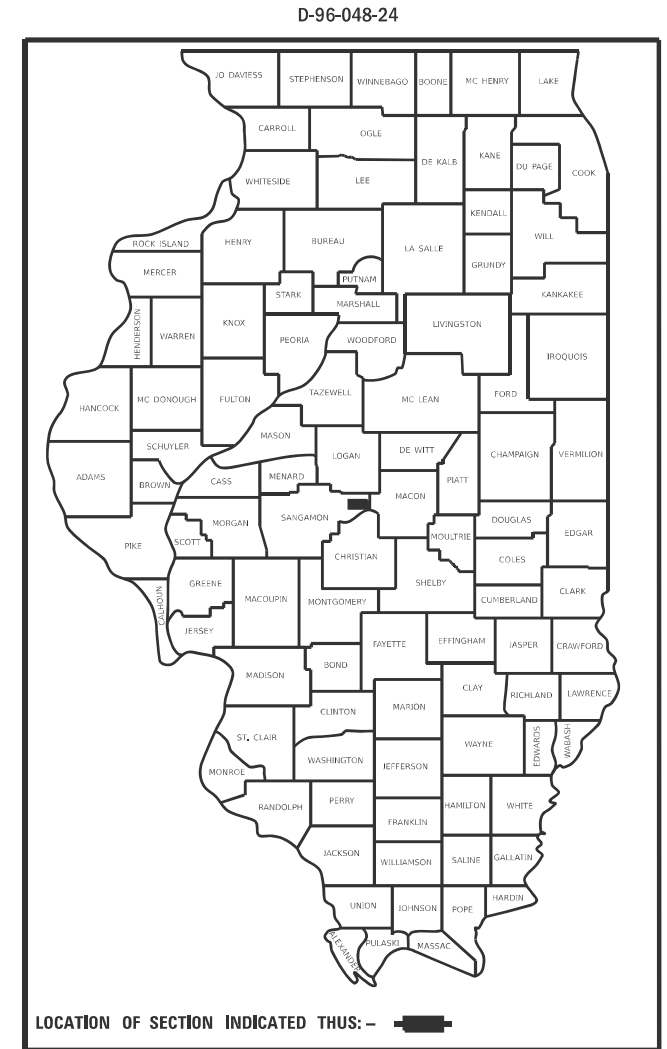
F.A.S. RTE.	SECTION	COUNTY	TOTAL SHEETS	SHEET NO.
631	16S(PP,DR)	SANGAMON	14	1
		ILLINOIS	CONTRACT NO. 72741	

FOR INDEX OF SHEETS, SEE SHEET NO. 2

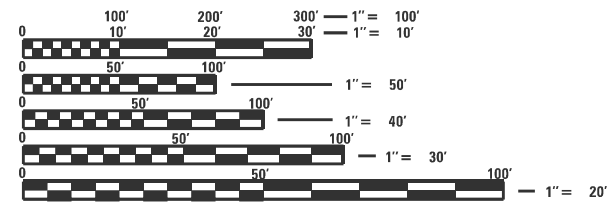
PROPOSED HIGHWAY PLANS

FAS ROUTE 631 (OLD US 36)
SECTION 16S(PP,DR)
PROJECT
PATCHING, DRAINAGE, DITCH CLEANING
SANGAMON COUNTY

C-96-069-24

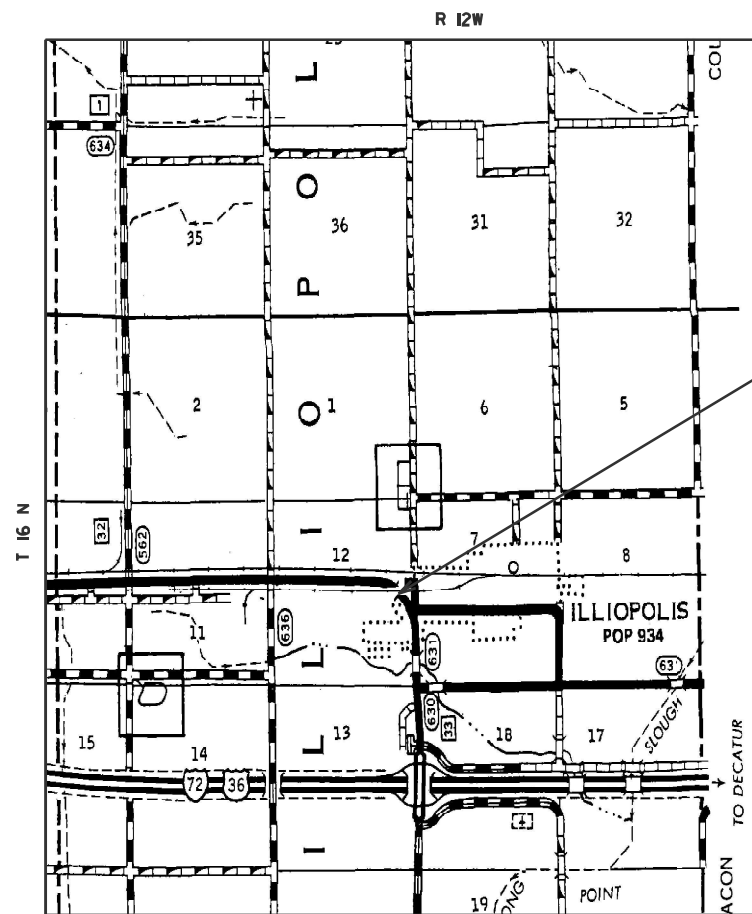


ADT = 1,700 (2022)
SU = 50 (2022)
MU = 80 (2022)



FULL SIZE PLANS HAVE BEEN PREPARED USING STANDARD ENGINEERING SCALES. REDUCED SIZED PLANS WILL NOT CONFORM TO STANDARD SCALES. IN MAKING MEASUREMENTS ON REDUCED PLANS, THE ABOVE SCALES MAY BE USED.

J.U.L.I.E.
JOINT UTILITY LOCATION INFORMATION FOR EXCAVATORS
1-800-892-0123
OR 811



PROJECT LOCATION

PROJECT ENGINEER: MIKE HAMBY (217)524-7765
PROJECT MANAGER TIM SHARP (217)524-9160

CONTRACT NO. 72741

STATE OF ILLINOIS
DEPARTMENT OF TRANSPORTATION

SUBMITTED February 4, 20 26
Teresa C. Price
REGIONAL ENGINEER

March 20, 20 26
[Signature]
ENGINEER OF DESIGN AND ENVIRONMENT

March 20, 20 26
[Signature]
DIRECTOR OF HIGHWAYS PROJECT IMPLEMENTATION

PRINTED BY THE AUTHORITY
OF THE STATE OF ILLINOIS

INDEX OF SHEETS

SHEET NO.	DESCRIPTION
1.	COVER SHEET
2.	INDEX OF SHEETS, STANDARDS, GENERAL NOTES & SIGNATURES
3.	SUMMARY OF QUANTITIES
4.	SCHEDULES
5.	LOCATION MAP
6-7.	PLANS
8.	TYPICAL SECTION
9.	BUTT JOINT DETAIL
10-14.	DETOUR

STANDARDS

STANDARD NO.	DESCRIPTION
701001-02	OFF-RD OPERATIONS, 2L, 2W, MORE THAN 15' AWAY
701006-05	OFF-RD OPERATIONS, 2L, 2W, 15' TO 24" FROM PAVEMENT EDGE
701201-05	LANE CLOSURE, 2L, 2W, DAY ONLY, FOR SPEEDS \geq 45 MPH
701306-04	LANE CLOSURE, 2L, 2W, DAY ONLY, SLOW MOVING OPERATIONS DAY ONLY FOR SPEEDS $>$ 45 MPH
701326-04	LANE CLOSURE, 2L, 2W, PAVEMENT WIDENING FOR SPEEDS \geq 45 MPH
701901-11	TRAFFIC CONTROL DEVICES
B.L.R. 21-9	TYPICAL APPLICATION OF TRAFFIC CONTROL DEVICES FOR CONSTRUCTION ON RURAL LOCAL HIGHWAYS

STATE OF ILLINOIS DEPARTMENT OF TRANSPORTATION DIVISION OF HIGHWAYS DISTRICT 6	
EXAMINED	February 6, 2026 <i>J. C. DeLeon</i> ENGINEER OF OPERATIONS
EXAMINED	February 6, 2026 <i>R. P. Smith</i> ENGINEER OF PROJECT IMPLEMENTATION
EXAMINED	February 6, 2026 <i>M. V.</i> ENGINEER OF PROGRAM DEVELOPMENT

THE FOLLOWING RATES OF APPLICATION HAVE BEEN ASSUMED IN CALCULATING PLAN QUANTITIES:

BITUMINOUS MATERIALS (TACK COAT)	0.05 LBS/SQ FT (EX HMA, MILLED SURFACE)
HMA SURFACE/BINDER(112 LBS)	0.056 TON/SQUARE YARD - INCH (MIX A-C)

Only the District 6 engineer assigned to the project, the RE or RT, will move the signals to manual flash condition and return the signals to "normal" operation. This shall not be delegated. In doing so, the RE or RT will have full responsibility for function of those signals and any issue that may arise from his/her actions.

The RE or RT shall notify by email:

brian.fry@illinois.gov, dale.hebenstreit@illinois.gov, or michael.hamby@illinois.gov at least the day prior to the planned traffic signal flash condition.

The contractor shall not have access to the signal cabinet.

If you have any questions or require additional information, please call Michael Hamby at 217-556-4643.

MIXTURE REQUIREMENTS	
MIXTURE USE(S):	HMA SURFACE COURSE
PG:	64-22
DESIGN AIR VOIDS:	4.0% @ N50
MIXTURE COMPOSITION:	IL-9.5
FRICTION AGGREGATE:	MIX C
QUALITY MANAGEMENT:	QC/QA
SUBLOT SIZE:	N/A
MTD REQUIRED:	NO

REV - MS

MODEL: D:\draft\111821\111821.dwg
FILE NAME: 111821.dwg
PROJECT: 6080 District 6
DRAWN: J. C. DeLeon
CHECKED: R. P. Smith
DATE: 2/4/2026

USER NAME = Timothy.Sharp	DESIGNED -	REVISED -
	DRAWN -	REVISED -
PLOT SCALE = \$SCALE\$	CHECKED -	REVISED -
PLOT DATE = 2/4/2026	DATE -	REVISED -

STATE OF ILLINOIS
DEPARTMENT OF TRANSPORTATION

INDEX OF SHEETS, HIGHWAY STANDARDS,
GENERAL NOTES, & SIGNATURES

SCALE: SHEET OF SHEETS STA. TO STA.

F.A.S. RTE.	SECTION	COUNTY	TOTAL SHEETS	SHEET NO.
631	165(PP,DR)	SANGAMON	14	2
				CONTRACT NO. 72741
ILLINOIS FED. AID PROJECT				

CODE NO.	ITEM	UNIT	TOTAL QUANTITY	0-02180-6006
				CONSTR. CODE
				100% STATE
				SANGAMON
				ROADWAY
				0004
				RURAL
20200100	EARTH EXCAVATION	CU YD	150	150
20800150	TRENCH BACKFILL	CU YD	50	50
40600290	BITUMINOUS MATERIALS (TACK COAT)	POUND	1267	1267
40600370	LONGITUDINAL JOINT SEALANT	FOOT	1056	1056
40600990	TEMPORARY RAMP	SQ YD	36	36
40604050	HOT-MIX ASPHALT SURFACE COURSE, IL-9.5, MIX :C:, N50	TON	315	315
44000157	HOT-MIX ASPHALT SURFACE REMOVAL, 2"	SQ YD	2816	2816
44000500	COMBINATION CURB AND GUTTER REMOVAL	FOOT	477	477
44200202	PAVEMENT PATCHING, TYPE II, 17 INCH	SQ YD	9	9
550A0070	STORM SEWERS, CLASS A, TYPE 1 15"	FOOT	167	167
550A0090	STORM SEWERS, CLASS A, TYPE 1 18"	FOOT	42	42
55100500	STORM SEWER REMOVAL 12"	FOOT	119	119
55100700	STORM SEWER REMOVAL 15"	FOOT	50	50
55100900	STORM SEWER REMOVAL 18"	FOOT	42	42
60221200	MANHOLES, TYPE A, 5'-DIAMETER, TYPE 3 FRAME AND GRATE	EACH	1	1
60240220	INLETS, TYPE B, TYPE 3 FRAME AND GRATE	EACH	5	5

CODE NO.	ITEM	UNIT	TOTAL QUANTITY	0-02180-6006
				CONSTR. CODE
				100% STATE
				SANGAMON
				ROADWAY
				0004
				RURAL
60607500	COMBINATION CONCRETE CURB AND GUTTER, TYPE B-9.24 (ABUTTING EXISTING PAVEMENT)	FOOT	477	477
60500060	REMOVING INLETS	EACH	6	6
67100100	MOBILIZATION	L SUM	1	1
70100450	TRAFFIC CONTROL AND PROTECTION, STANDARD 701201	L SUM	1	1
70100460	TRAFFIC CONTROL AND PROTECTION, STANDARD 701306	L SUM	1	1
70100500	TRAFFIC CONTROL AND PROTECTION, STANDARD 701326	L SUM	1	1
70107025	CHANGEABLE MESSAGE SIGN	CAL DA	40	40
70300100	SHORT TERM PAVEMENT MARKING	FOOT	212	212
70300150	SHORT TERM PAVEMENT MARKING REMOVAL	SQ FT	71	71
* 78009005	MODIFIED URETHANE PAVEMENT MARKING - LINE 5"	FOOT	4224	4224
* 78100100	RAISED REFLECTIVE PAVEMENT MARKER	EACH	14	14
78300200	RAISED REFLECTIVE PAVEMENT MARKER REMOVAL	EACH	14	14
X7011800	TRAFFIC CONTROL AND PROTECTION, STANDARD BLR 21	L SUM	1	1
X7200203	DETOUR SIGNING	L SUM	1	1
z0013798	CONSTRUCTION LAYOUT	L SUM	1	1
20048665	RAILROAD PROTECTIVE LIABILITY INSURANCE	L SUM	1	1

* SPECIALTY ITEM

REV - MS

FILE NAME :	USER NAME : Timothy.Sharp	DESIGNED -	REVISED -	STATE OF ILLINOIS DEPARTMENT OF TRANSPORTATION	SUMMARY OF QUANTITIES				F.A.S. RTE.	SECTION	COUNTY	TOTAL SHEETS	SHEET NO.
pw://idot-pw.bentley.com/P/IDOT/Document/IDOT Offices/District 6/ORD Projects/7274/ORD/CA/Dehans/DMS41-shr-3-500.dgn	DRWN -	REVISED -	63						155PPDRR	SANGAMON	14	3	
PLOT SCALE : #SCALE#	CHECKED -	REVISED -	SCALE: SHEET OF SHEETS STA. TO STA.					CONTRACT NO. T274					
Default	PLOT DATE : 2/4/2026	DATE -	REVISED -		ILLINOIS FED. AID PROJECT								



MODEL: Default
 FILE NAME: p:\illinois\work\projects\DOT_0_cad\District_6\ORBD_Projects\72741\CADData\CADsheets\72741-1\ts5-location_map.dgn

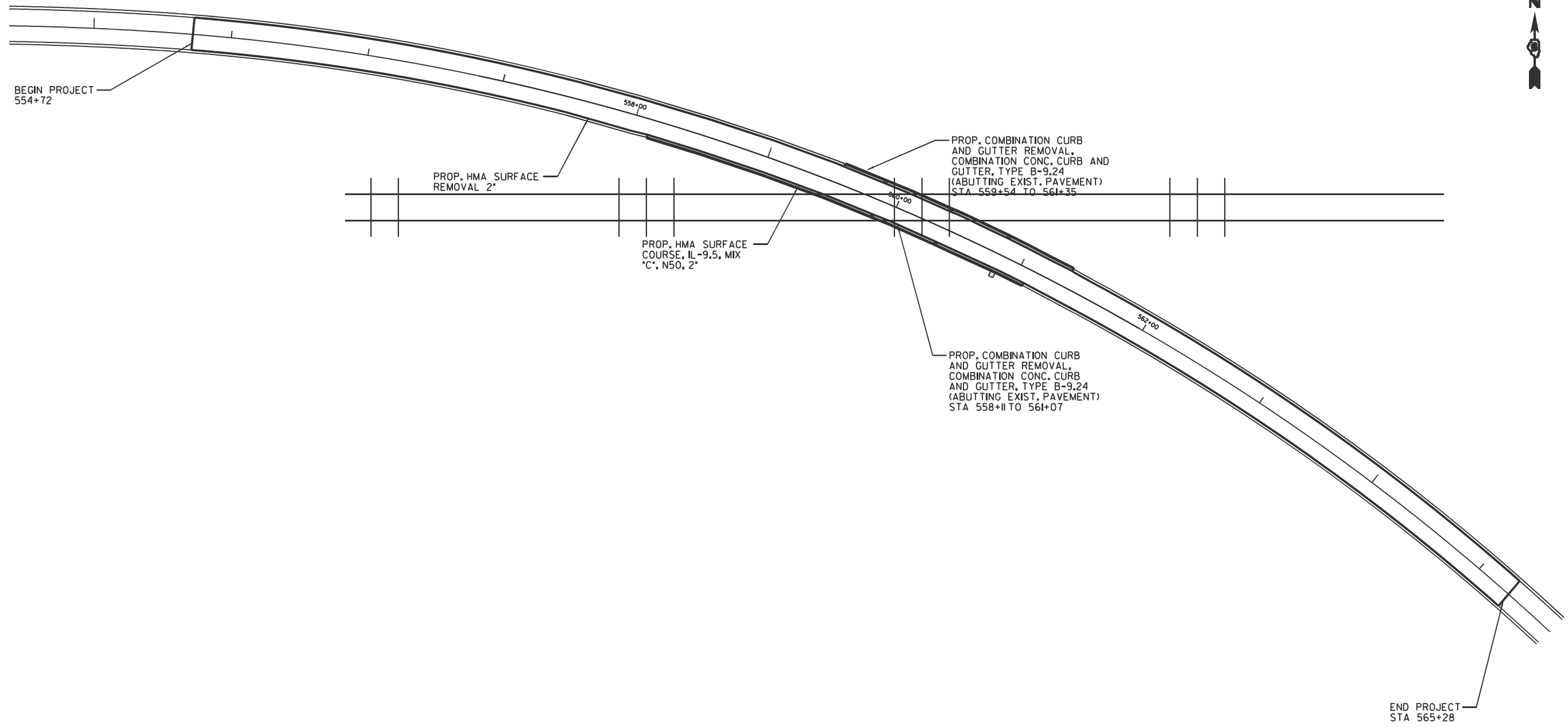
USER NAME = Timothy.Sharp	DESIGNED -	REVISED -
	DRAWN -	REVISED -
PLOT SCALE = \$SCALE	CHECKED -	REVISED -
PLOT DATE = 1/23/2026	DATE -	REVISED -

STATE OF ILLINOIS
DEPARTMENT OF TRANSPORTATION

LOCATION MAP

SCALE: SHEET OF SHEETS STA. TO STA.

F.A.S. RTE.	SECTION	COUNTY	TOTAL SHEETS	SHEET NO.
631	165(PP,DR)	SANGAMON	14	5
CONTRACT NO. 72741				
ILLINOIS FED. AID PROJECT				



NOTE:
SEE SHEET 8 FOR
DRAINAGE DETAILS.

MODEL: D:\draft
 FILE NAME: p:\illinois\work\projects\72741\CAD\Drawings\DOT_0_cad\District_6\608D_Projects\72741\CAD\Drawings\72741_Plan6-7.plans.dgn

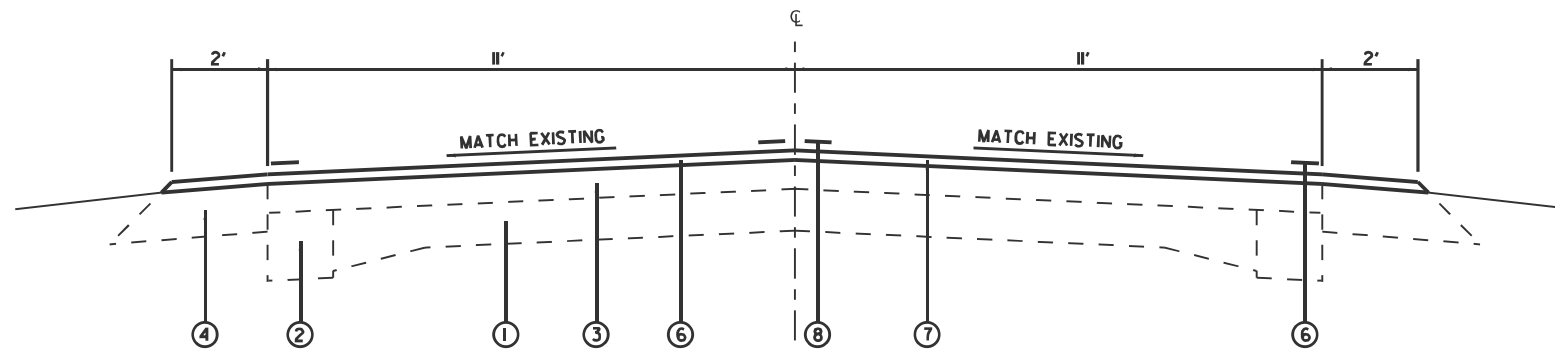
USER NAME = Timothy,Sharp	DESIGNED -	REVISED -
	DRAWN -	REVISED -
PLOT SCALE = \$SCALE\$	CHECKED -	REVISED -
PLOT DATE = 1/23/2026	DATE -	REVISED -

**STATE OF ILLINOIS
DEPARTMENT OF TRANSPORTATION**

LOCATION #2 PLANS

SCALE: SHEET OF SHEETS STA. TO STA.

F.A.S. RTE.	SECTION	COUNTY	TOTAL SHEETS	SHEET NO.
631	165(PP,DR)	SANGAMON	14	6
CONTRACT NO. 72741				
ILLINOIS FED. AID PROJECT				

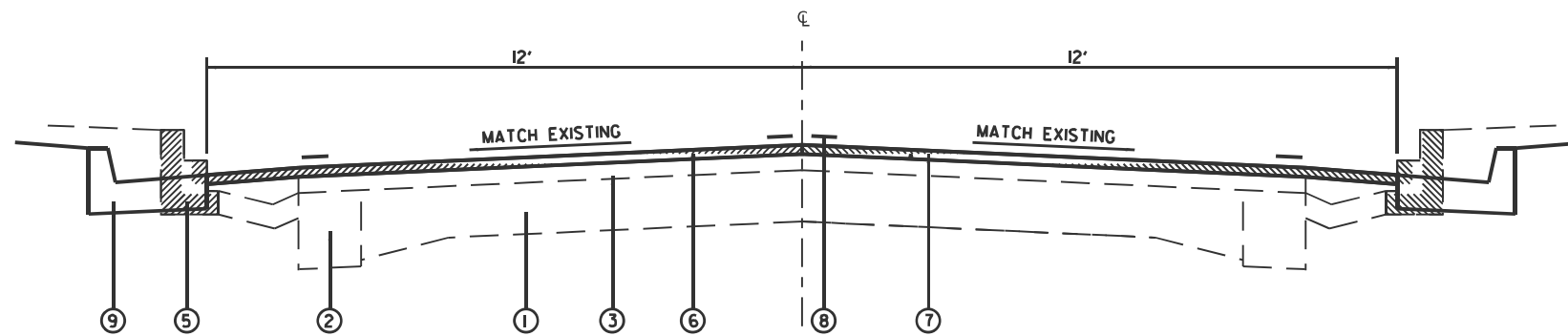


TYPICAL SECTION

LT STA 554+72.00 TO 559+54.00
 RT STA 554+72.00 TO 558+11.00
 LT STA 561+35.00 TO 565+28.00
 RT STA 561+07.00 TO 565+28.00

LEGEND

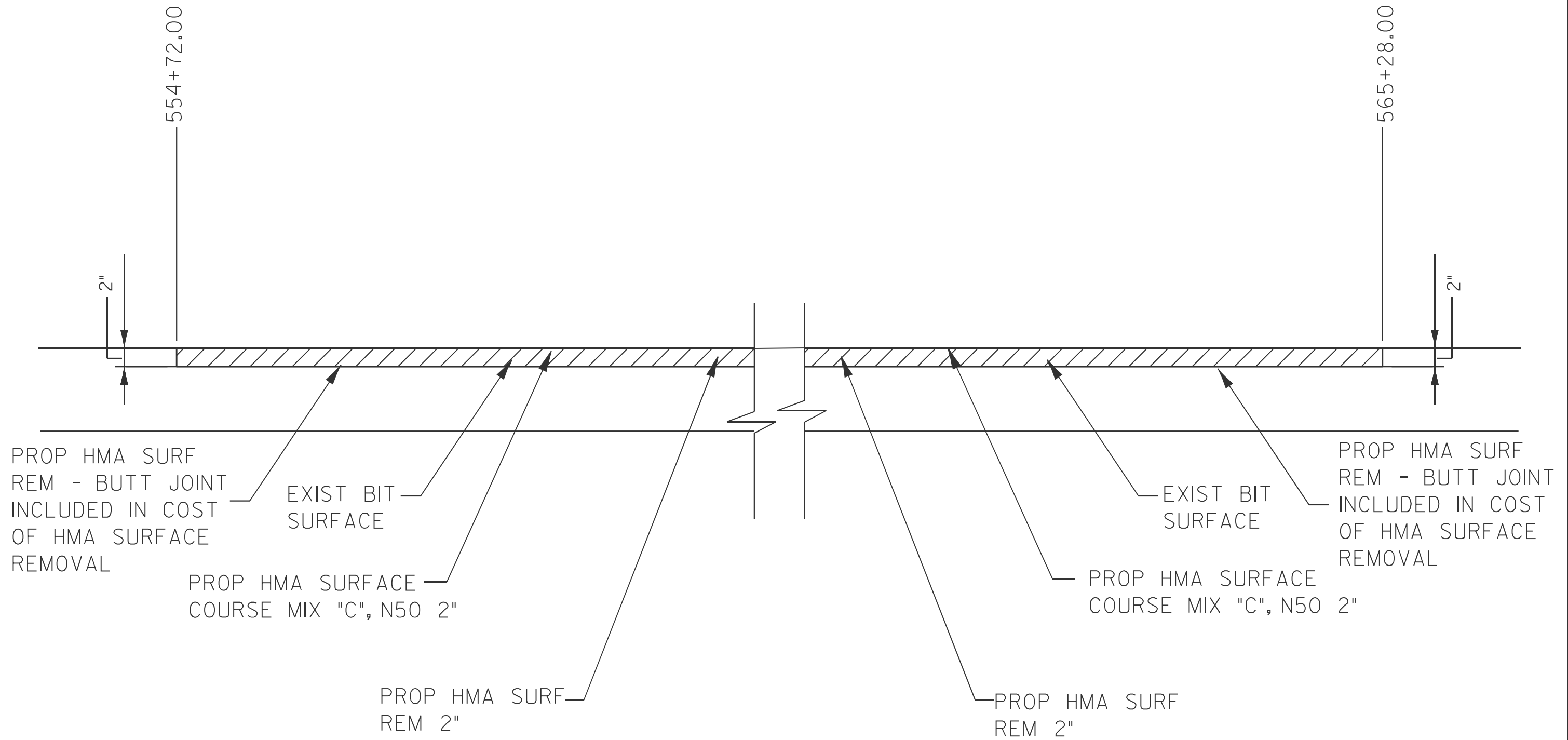
- ① EXISTING PCC PAVEMENT (9'-6'-9')
- ② EXISTING PCC WIDENING (9')
- ③ EXISTING HMA OVERLAY (8' AND VARIABLE)
- ④ EXISTING HMA SHOULDERS (8')
- ⑤ COMBINATION CURB AND GUTTER REMOVAL
- ⑥ PROPOSED HOT-MIX ASPHALT SURFACE REMOVAL 2"
- ⑦ PROPOSED HOT-MIX ASPHALT SURFACE COURSE, IL-9.5, MIX "C", N50
- ⑧ PROPOSED PAINT PAVEMENT MARKING (5')
- ⑨ PROPOSED COMBINATION CURB AND GUTTER, TYPE B9.24 (ABUTTING EXISTING PAVEMENT)



TYPICAL SECTION

LT STA 559+54.00 TO 561+35.00
 RT STA 558+11.00 TO 561+07.00

FILE NAME = pw://idot-pw.bentley.com/PWIDOT/Documents/IDOT Offices/District 6/ORD Projects/7274/ORD/ORD/CADsheets/72741-sh-8-typicals.d	USER NAME = Timothy.Sharp	DESIGNED -	REVISED -	STATE OF ILLINOIS DEPARTMENT OF TRANSPORTATION	TYPICAL SECTION			F.A.S. RTE.	SECTION	COUNTY	TOTAL SHEETS	SHEET NO.
	PLOT SCALE = *SCALE*	CHECKED -	REVISED -					63	165PP(DR)	SANGAMON	14	8
PLOT DATE = 1/23/2026	DATE -	REVISED -	REVISED -	SCALE:	SHEET NO. OF	SHEETS	STA.	TO STA.	ILLINOIS FED. AID PROJECT CONTRACT NO. 72741			



FILE NAME =	USER NAME = Timothy.Sharp	DESIGNED -	REVISED -
pww/11dot-pw.bentley.com/IDOT/Documents/IDOT Offices/District 6/ORD Projects/7274/ORD/7274/CADsheets/72741-sh-18-butt joint		CHECKED -	REVISED -
Default	PLOT DATE = 1/23/2026	DATE -	REVISED -

**STATE OF ILLINOIS
DEPARTMENT OF TRANSPORTATION**

BUTT-JOINT DETAIL			
SCALE:	SHEET	OF SHEETS	STA. TO STA.

F.A.S. RTE. 63	SECTION 16SPP(DR)	COUNTY SANGAMON	TOTAL SHEETS 14	SHEET NO. 9
CONTRACT NO. 72741				
ILLINOIS FED. AID PROJECT				



MODEL: D:\draft
 FILE NAME: p:\illinois\work\bechtel.com\PI\DOT\Documents\DOT_0_csr\District_6\ORBD_Projects\72741\CAD\Draw\CAD\bechtel\72741-1-alt-detour.dwg

USER NAME = Timothy,Sharp	DESIGNED -	REVISED -
	DRAWN -	REVISED -
PLOT SCALE = \$SCALE	CHECKED -	REVISED -
PLOT DATE = 1/23/2026	DATE -	REVISED -

STATE OF ILLINOIS
DEPARTMENT OF TRANSPORTATION

DETOUR ROUTE DETAIL A

SCALE: SHEET OF SHEETS STA. TO STA.

F.A.S. RTE.	SECTION	COUNTY	TOTAL SHEETS	SHEET NO.
631	165(PP,DR)	SANGAMON	14	11
CONTRACT NO. 72741				
ILLINOIS FED. AID PROJECT				



BUFFALO/MECHANICSBURG RD/MAIN ST

MODEL: D:\draft FILE NAME: p:\illinois\work\bechtel\com\p\INDOT\Documents\DOT_0_csa\District_6\608D_Projects\72741\CAD\Draw\CAD\bechtel\72741-1-alt-detour.dwg

USER NAME = Timothy.Sharp	DESIGNED -	REVISED -
DRAWN -	REVISED -	
PLOT SCALE = \$SCALE	CHECKED -	REVISED -
PLOT DATE = 1/23/2026	DATE -	REVISED -

**STATE OF ILLINOIS
DEPARTMENT OF TRANSPORTATION**

DETOUR ROUTE DETAIL B

SCALE: SHEET OF SHEETS STA. TO STA.

F.A.S. RTE.	SECTION	COUNTY	TOTAL SHEETS	SHEET NO.
631	165(PP,DR)	SANGAMON	14	12
CONTRACT NO. 72741				
ILLINOIS FED. AID PROJECT				



TYIII BARRICADES ON SHOULDER WITH
 OLD 36 WEST
 CLOSED
 1.0 MILES AHEAD
 LOCAL TRAFFIC ONLY
 (4830)

TYIII BARRICADES ON SHOULDER WITH
 OLD 36 WEST
 CLOSED
 1.0 MILES AHEAD
 LOCAL TRAFFIC ONLY

MODEL: Default
 FILE: M:\MIS\pwr\illinois-caw\bechtel.com\INDOT\Documents\DOT 0_caw\District_6\608D_Projects\72741\CAD\Drawings\72741-1-alt-detour.dwg

USER NAME = Timothy.Sharp	DESIGNED -	REVISED -
	DRAWN -	REVISED -
PLOT SCALE = \$SCALE	CHECKED -	REVISED -
PLOT DATE = 1/23/2026	DATE -	REVISED -

**STATE OF ILLINOIS
 DEPARTMENT OF TRANSPORTATION**

DETOUR ROUTE DETAIL C

SCALE: SHEET OF SHEETS STA. TO STA.

F.A.S. RTE.	SECTION	COUNTY	TOTAL SHEETS	SHEET NO.
631	165(PP,DR)	SANGAMON	14	13
CONTRACT NO. 72741				
ILLINOIS FED. AID PROJECT				



MODEL: D:\draft
 FILE NAME: p:\ilhs-caw-bentley.com\PIV\DOT\Documents\DOT_0_csa\District_6\ORD_Projects\72741\CAD\Draws\CAD\Sheet\72741-1-alt-detour.dwg

USER NAME = Timothy,Sharp	DESIGNED -	REVISED -
	DRAWN -	REVISED -
PLOT SCALE = \$SCALE	CHECKED -	REVISED -
PLOT DATE = 1/23/2026	DATE -	REVISED -

STATE OF ILLINOIS
DEPARTMENT OF TRANSPORTATION

DETOUR ROUTE DETAIL D

SCALE: SHEET OF SHEETS STA. TO STA.

F.A.S. RTE.	SECTION	COUNTY	TOTAL SHEETS	SHEET NO.
631	165(PP,DR)	SANGAMON	14	14
CONTRACT NO. 72741				
ILLINOIS FED. AID PROJECT				