

STATE OF ILLINOIS
 DEPARTMENT OF TRANSPORTATION
 DIVISION OF HIGHWAYS

**PROPOSED
 IMPROVEMENTS**

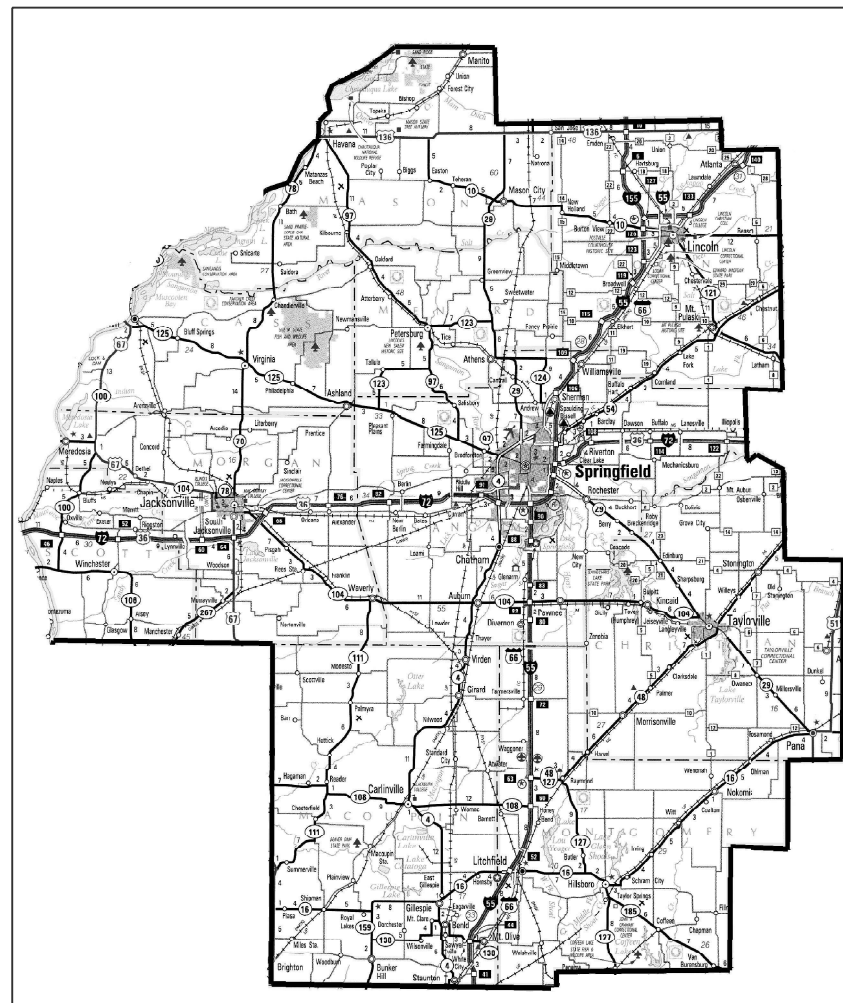
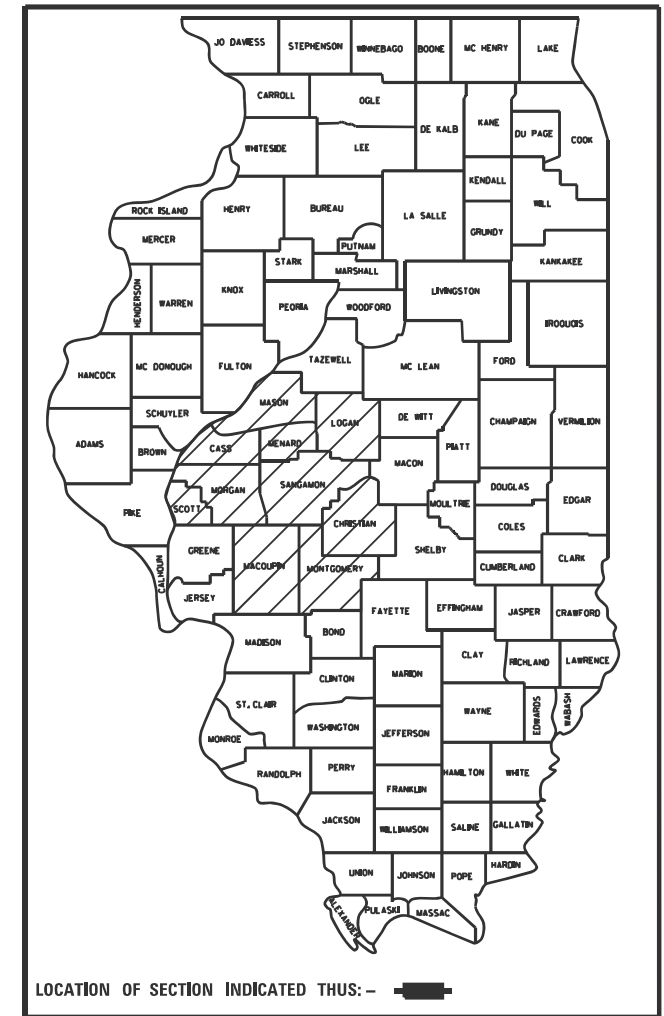
VARIOUS ROUTES
 SECTION D6 LIGHTING 2026
 SIGNAL & LIGHTING MAINTENANCE

VARIOUS COUNTIES
 C96-069-12

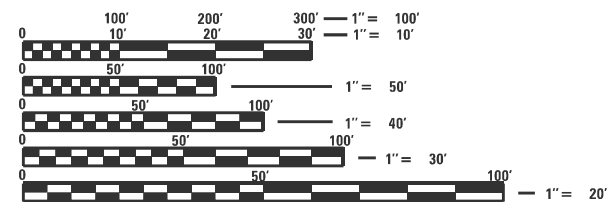
FOR INDEX OF SHEETS, SEE SHEET NO. 2

RTE.	SECTION	COUNTY	TOTAL SHEETS	SHEET NO.
VAR.	D6 LIGHTING 2026	VARIOUS	3	1
ILLINOIS			CONTRACT NO. 72F51	

D-96-069-12



LOCATION MAP



FULL SIZE PLANS HAVE BEEN PREPARED USING STANDARD ENGINEERING SCALES. REDUCED SIZED PLANS WILL NOT CONFORM TO STANDARD SCALES. IN MAKING MEASUREMENTS ON REDUCED PLANS, THE ABOVE SCALES MAY BE USED.

J.U.L.I.E.
 JOINT UTILITY LOCATION INFORMATION FOR EXCAVATION
 1-800-892-0123
 OR 811

PROJECT ENGINEER : MIKE HAMBY - (217)524-7765
 PROJECT MANAGER : TIM SHARP - (217)524-9160

CONTRACT NO. 72F51

STATE OF ILLINOIS
 DEPARTMENT OF TRANSPORTATION
 DIVISION OF HIGHWAYS

SUBMITTED January 29, 20 26
Teresa C. Price
 REGIONAL ENGINEER

March 20, 20 26
[Signature]
 ENGINEER OF DESIGN AND ENVIRONMENT

March 20, 20 26
[Signature]
 DIRECTOR OF HIGHWAYS PROJECT IMPLEMENTATION

PRINTED BY THE AUTHORITY
 OF THE STATE OF ILLINOIS

INDEX OF SHEETS

1. COVER
2. INDEX OF SHEETS AND HIGHWAY STANDARDS
3. SUMMARY OF QUANTITIES AND GENERAL NOTES

HIGHWAY STANDARDS

- 701001-02 OFF-RD OPERATIONS, 2L, 2W, MORE THAN 15' AWAY FROM EDGE OF PAVEMENT
- 701006-05 OFF-RD OPERATIONS, 2L, 2W, 15' TO 24" FROM PAVEMENT EDGE
- 701011-04 OFF-RD MOVING OPERATION, 2L, 2W, DAY ONLY
- 701101-05 OFF-RD OPERATIONS, MULTILANE, 15' TO 24" FROM PAVEMENT EDGE
- 701106-02 OFF RD OPERATIONS, MULTILANE, MORE THAN 15' AWAY
- 701201-05 LANE CLOSURE, 2L, 2W, DAY ONLY, FOR SPEEDS \geq 45 MPH
- 701206-05 LANE CLOSURE, 2L, 2W, NIGHT ONLY, FOR SPEEDS \geq 45 MPH
- 701301-04 LANE CLOSURE, 2L, 2W, SHORT TIME OPERATIONS
- 701306-04 LANE CLOSURE, 2L, 2W, SLOW MOVING OPERATIONS DAY ONLY, FOR SPEED \geq 45 MPH
- 701311-03 LANE CLOSURE, 2L, 2W, MOVING OPERATIONS - DAY ONLY
- 701400-12 APPROACH TO LANE CLOSURE, FREEWAY/EXPRESSWAY
- 701406-13 LANE CLOSURE, FREEWAY/EXPRESSWAY, DAY OPERATIONS ONLY
- 701411-09 LANE CLOSURE, MULTILANE, AT ENTRANCE OR EXIT RAMP, FOR SPEEDS \geq 45 MPH
- 701421-08 LANE CLOSURE, MULTILANE, DAY OPERATIONS ONLY, OR SPEEDS \geq 45 MPH TO 55 MPH
- 701422-10 LANE CLOSURE, MULTILANE, FOR SPEEDS $>$ 45 MPH TO 55 MPH
- 701426-09 LANE CLOSURE, MULTILANE, INTERMITTENT OR MOVING OPER., FOR SPEEDS $>$ 45 MPH
- 701427-05 LANE CLOSURE, MULTILANE, INTERMITTENT OR MOVING OPER., FOR SPEEDS $<$ 40 MPH
- 701428-01 TRAFFIC CONTROL SETUP AND REMOVAL, FREEWAY/EXPRESSWAY
- 701446-11 TWO LANE CLOSURE FREEWAY/EXPRESSWAY
- 701451-05 RAMP CLOSURE FREEWAY/EXPRESSWAY
- 701456-05 PARTIAL EXIT RAMP CLOSURE FREEWAY/EXPRESSWAY
- 701501-06 URBAN LANE CLOSURE, 2L, 2W, UNDIVIDED
- 701502-09 URBAN LANE CLOSURE, 2L, 2W, WITH BIDIRECTIONAL LEFT TURN LANE
- 701601-09 URBAN LANE CLOSURE, MULTILANE, 1W OR 2W WITH NONTRAVERSABLE MEDIAN
- 701602-10 URBAN LANE CLOSURE, MULTILANE, 2W WITH BIDIRECTIONAL LEFT TURN LANE
- 701701-10 URBAN LANE CLOSURE, MULTILANE INTERSECTION
- 701801-06 SIDEWALK, CORNER OR CROSSWALK CLOSURE
- 701901-11 TRAFFIC CONTROL DEVICES
- 000001-09 STANDARD SYMBOLS, ABBREVIATIONS AND PATTERNS

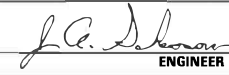
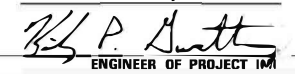

Only the District 6 engineer assigned to the project, the RE or RT, will move the signals to manual flash condition and return the signals to "normal" operation. This shall not be delegated. In doing so, the RE or RT will have full responsibility for function of those signals and any issue that may arise from his/her actions.

The RE or RT shall notify by email:

brion.fry@illinois.gov, dale.hebenstreit@illinois.gov or michael.hamby@illinois.gov at least the day prior to the planned traffic signal flash condition.

The contractor shall not have access to the signal cabinet.

If you have any questions or require additional information, please call Michael Hamby at 217-556-4643.

STATE OF ILLINOIS DEPARTMENT OF TRANSPORTATION DIVISION OF HIGHWAYS DISTRICT 6	
EXAMINED _____	February 6, 20 26
 ENGINEER OF OPERATIONS	
EXAMINED _____	February 6, 20 26
 ENGINEER OF PROJECT IMPLEMENTATION	
EXAMINED _____	February 6, 20 26
 ENGINEER OF PROGRAM DEVELOPMENT	

FILE NAME :	USER NAME : Timothy.Sharp	DESIGNED -	REVISED -	STATE OF ILLINOIS DEPARTMENT OF TRANSPORTATION	INDEX OF SHEETS AND HIGHWAY STANDARDS	RTE.	SECTION	COUNTY	TOTAL SHEETS	SHEET NO.	
ps://idot-pu.bentley.com/IDOT/Document/IDOT Offices/District 6/ORD Projects/72F51-000001/CADsheets/72F51-sht-2-gennote.d	ORIGIN/DATE	CHECKED -	REVISED -			VAR.	D6 LIGHTING 2026	VARIOUS	3	2	
Default	PLOT SCALE : #SCALE#	DATE -	REVISED -			SCALE: _____ SHEET OF SHEETS STA. TO STA.		CONTRACT NO. 72F51			
	PLOT DATE : 1/29/2026		REVISED -			ILLINOIS FED. AID PROJECT					

CODE NO.	ITEM	UNIT	QUANTITY	6-01600-9951	6-00361-9951
				CONSTR. CODE	CONSTR. CODE
				TOTAL QUANTITY	TOTAL QUANTITY
				100% MCHD 0021	100% STATE 0021
				RURAL	RURAL
82110007	LUMINAIRE, LED, ROADWAY, OUTPUT DESIGNATION G	EACH	50	27	23
83060830	LIGHT POLE, GALVANIZED STEEL, 45 FT. M.H., TENON MOUNT	EACH	14	8	6
83060850	LIGHT POLE, GALVANIZED STEEL, 55 FT. M.H., TENON MOUNT	EACH	6	4	2
X1400035	150W HPS LAMP/NON CYCLING	EACH	20	11	9
X1400036	250W HPS LAMP/NON CYCLING	EACH	250	135	115
X1400037	400W HPS LAMP/NON CYCLING	EACH	90	49	41
X1400039	150W-240V HPS TRANSFORMER KIT	EACH	6	4	2
X1400040	250W-240V HPS TRANSFORMER KIT (GE)	EACH	20	13	7
X1400041	250W-480V HPS TRANSFORMER KIT (GE)	EACH	20	11	9
X1400042	250W-480V HPS TRANSFORMER KIT (HOLOPHANE)	EACH	20	11	9
X1400043	12" SIGNAL HEAD W/O VISOR (POLYCARBONATE)	EACH	20	11	9
X1400044	12" SIGNAL HEAD VISOR (POLYCARBONATE)	EACH	20	11	9
X1400045	ELASTIMOLD FUSE HOLDER	EACH	35	19	16
X1400046	RED MARKING PAINT	EACH	75	40	35
X1400047	SOLID STATE NEMA FLASHER	EACH	10	7	3
X1400048	SOLID STATE NEMA LOAD SWITCH	EACH	30	16	14
X1400049	12" LED MODULE (GREEN)	EACH	15	8	7
X1400050	12" LED MODULE (YELLOW)	EACH	10	7	3
X1400051	12" LED MODULE (RED)	EACH	15	8	7
X1400052	250W-240V HPS TRANSFORMER KIT (HOLOPHANE)	EACH	10	7	3
X1400054	150W-480V HPS TRANSFORMER KIT	EACH	10	7	3
X1400055	400W-240V HPS TRANSFORMER KIT	EACH	10	7	3
X1400056	400W-480V HPS TRANSFORMER KIT	EACH	10	7	3
X1400057	FNM 10 BUSS FUSE	EACH	150	81	69
X1400058	10 AMP CONTROL FUSE	EACH	50	27	23
X1400063	#6 USE WIRE	FOOT	2000	1,080	920
X1400064	#10 USE WIRE	FOOT	3500	1,890	1,610
X1400066	SURRESTOR	EACH	34	18	16
X1400067	SET 4 BREAKAWAY COUPLERS (TRANSP0 4100)	EACH	20	11	9
X1400070	50' ALUMINUM 15' DAVIT ARM POLE	EACH	3	2	1
X1400071	50' ALUMINUM 15' DUAL DAVIT ARM POLE	EACH	3	2	1
X1400074	BUS INTERFACE UNIT	EACH	12	7	5
X1400076	COBALT CONTROLLER	EACH	4	3	1
X1400209	45' ALUMINUM LIGHT POLE WITH 15' DAVIT ARM	EACH	2	1	1
X1400361	1-PORT MOXA GIGABIT ETHERNET MODULE "SFP-IGLXC-T"	EACH	4	3	1
X1400362	AUTOSCOPE VISON COMM MANAGER	EACH	2	1	1
X1400363	MOXA "ADS-510E-3GTXSFP-T" ETHERNET SWITCH WITH DIN RAIL POWER SUPPLY	EACH	4	3	1
X1400364	AXIS MODEL 06042-E DOME CAMERA ASSEMBLY	EACH	2	1	1
X8210402	LUMINAIRE MOUNTING BRACKET (SPECIAL)	EACH	50	27	23
X8250230	PHOTOCELL	EACH	30	16	14
XP000001	JOURNEYMAN ELECTRICIAN	HOUR	1010	545	465
XP000003	JOURNEYMAN ELECTRICIAN (WEEKLY OVERTIME RATE)	HOUR	32	17	15
XP000004	JOURNEYMAN ELECTRICIAN (SATURDAY OVERTIME RATE)	HOUR	32	17	15
XP000005	JOURNEYMAN ELECTRICIAN (SUNDAY AND HOLIDAY OVERTIME RATE)	HOUR	32	17	15
XP000009	PICK-UP TRUCK	HOUR	500	270	230
XP000010	BUCKET TRUCK (LENGTH LESS THAN 35 FEET)	HOUR	180	97	83
XP000011	BUCKET TRUCK (LENGTH 35 TO 65 FEET)	HOUR	300	162	138

GENERAL NOTES

This work is located on various routes in Mason, Menard, Cass, Morgan, Scott, Logan, Sangamon, Christian, Montgomery and Macoupin counties all located within Region 4, District 6. The work included in this section consists of maintaining and repairing the electrical systems and all other work necessary to complete this section.

The locations of the repair areas shall be determined by the engineer.

All work is to be replaced in kind or, as indicated on the contract plans or provisions.

Removal of damaged materials will include dismantling, loading, hauling, and disposal.

Any necessary traffic control will be provided by the contractor; appropriate standards are listed on Sheet No. 2. Traffic control shall not be paid for as separate pay items, but shall be considered a part of the contract.

The work site shall be left in a safe and orderly condition.

No material should be left on or near the roadway during non-working hours.

All excavated material, which includes digging or grading of any soil or fill material, with the exception of aggregate fills, must be left on, or incorporated within, the IDOT right-of-way due to environmental documentation requirements.

Any work order may be cancelled at the engineer's discretion.

English units of measurement shall govern over and supersede any metric units in this contract. Where included, metric units are for information only.

Electronic files and/or electronic survey information including CADD files will not be available for this project to the contractor.

No overnight lane closures will be allowed, unless emergency conditions exist.

Any reference to a standard in these plans shall be interpreted to mean the edition as indicated by the subnumber shown in the list of standards or the copy included in these plans.

FILE NAME =	USER NAME = Timothy.Sharp	DESIGNED -	REVISED -	STATE OF ILLINOIS DEPARTMENT OF TRANSPORTATION	SUMMARY OF QUANTITIES AND GENERAL NOTES	RTE.	SECTION	COUNTY	TOTAL SHEETS	SHEET NO.
pwr://idot-pw.bentley.com/PWIDOT/Documents/IDOT Offices/District 6/ORD Projects/72F51/ORD/CADsheets/72F51-sht-3-500.dgn	ORIGIN	REVISION	VAR.			D6 LIGHTING 2026	VARIOUS	3	3	
SHT_PLAN	PLOT SCALE = *SCALE*	CHECKED -	REVISION			CONTRACT NO. 72F51			ILLINOIS FED. AID PROJECT	
	PLOT DATE = 1/29/2026	DATE -	REVISION			SCALE:	SHEET	OF	SHEETS	STA.