

STATE OF ILLINOIS  
DEPARTMENT OF TRANSPORTATION

F.A.S. WRITE	SECTION	COUNTY	TOTAL SHEETS	SHEET NO.
2801	103 FNC	FAYETTE	4	1
		ILLINOIS	CONTRACT NO. 74D60	

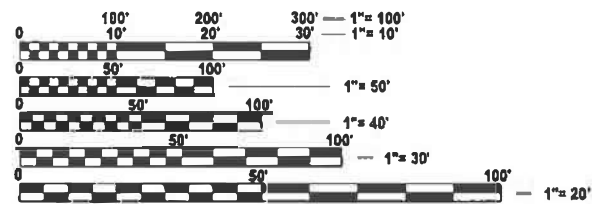
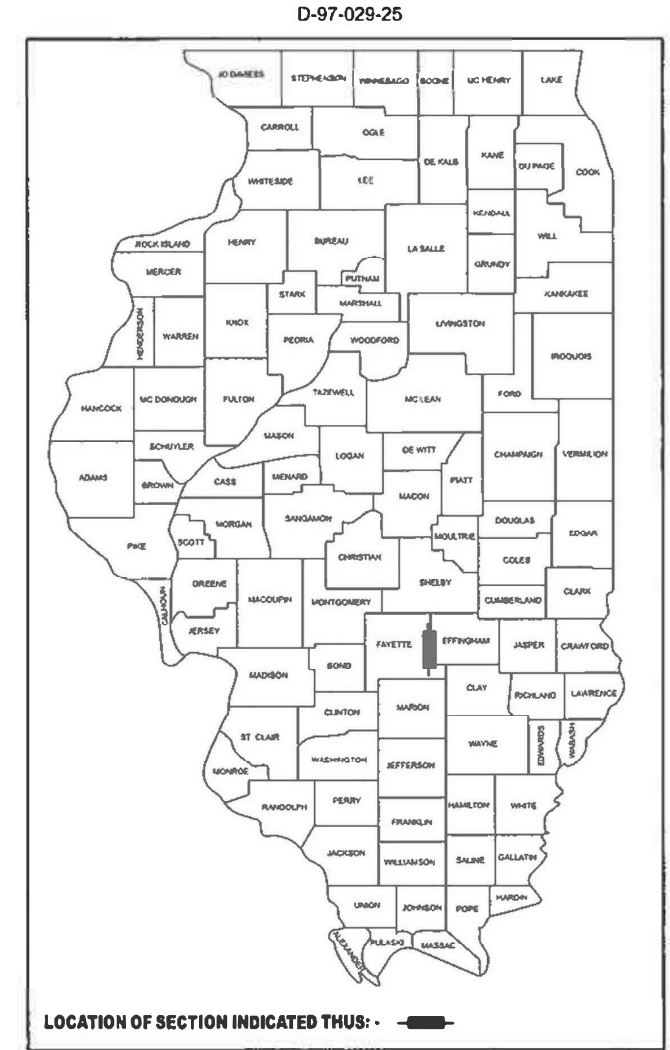
FOR INDEX OF SHEETS, SEE SHEET NO. 2

PROPOSED  
HIGHWAY PLANS

FAS ROUTE 2801 (IL 128)  
SECTION 103 FNC

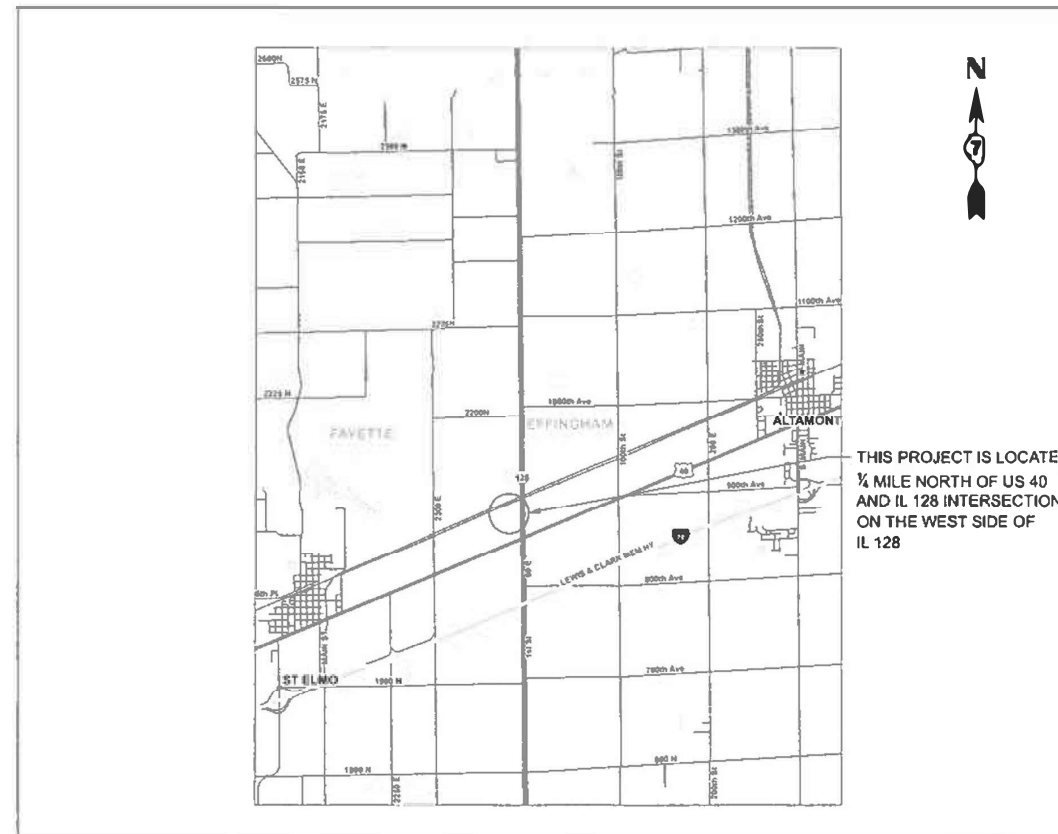
FENCING  
FAYETTE COUNTY

C-97-060-25



FULL SIZE PLANS HAVE BEEN PREPARED USING STANDARD ENGINEERING SCALES. REDUCED SIZED PLANS WILL NOT CONFORM TO STANDARD SCALES. IN MAKING MEASUREMENTS ON REDUCED PLANS, THE ABOVE SCALES MAY BE USED.

J.U.L.I.E.  
JOINT UTILITY LOCATION INFORMATION FOR EXCAVATION  
1-800-892-0123  
OR 811



THIS PROJECT IS LOCATED ¼ MILE NORTH OF US 40 AND IL 128 INTERSECTION ON THE WEST SIDE OF IL 128

GROSS LENGTH = 500 FT. = 0.08 MILE  
NET LENGTH = 500 FT. = 0.08 MILE

PROJECT ENGINEER DEWAYNE SEACHRIST  
PROJECT MANAGER ROBERT GREUEL

CONTRACT NO. 74D60

STATE OF ILLINOIS  
DEPARTMENT OF TRANSPORTATION

SUBMITTED January 27, 2026  
*Teresa C. Price*  
REGIONAL ENGINEER

March 20, 2026  
*[Signature]*  
ENGINEER OF DESIGN AND ENVIRONMENT

March 20, 2026  
*[Signature]*  
DIRECTOR OF HIGHWAYS PROJECT IMPLEMENTATION

PRINTED BY THE AUTHORITY  
OF THE STATE OF ILLINOIS

**INDEX OF SHEETS**

SHEET NO.	DESCRIPTION
1	COVER SHEET
2	INDEX OF SHEETS, HIGHWAY STANDARDS AND GENERAL NOTES
3	SUMMARY OF QUANTITIES
4	FENCE PLAN

**HIGHWAY STANDARDS**

000001-09	STANDARD SYMBOLS, ABBREVIATIONS AND PATTERNS
001006	DECIMAL OF AN INCH AND OF A FOOT
664001-02	CHAIN LINK FENCE
701001-02	OFF-ROAD OPERATIONS, 2L, 2W, MORE THAN 15' AWAY
701006-05	OFF-ROAD OPERATIONS, 2L, 2W, 15' TO 24" FROM PAVEMENT EDGE
701901-11	TRAFFIC CONTROL DEVICES

**GENERAL NOTES**

THE EXISTING PROPERTY MARKERS WILL BE STAKED BY IDOT BEFORE WORK BEGINS.

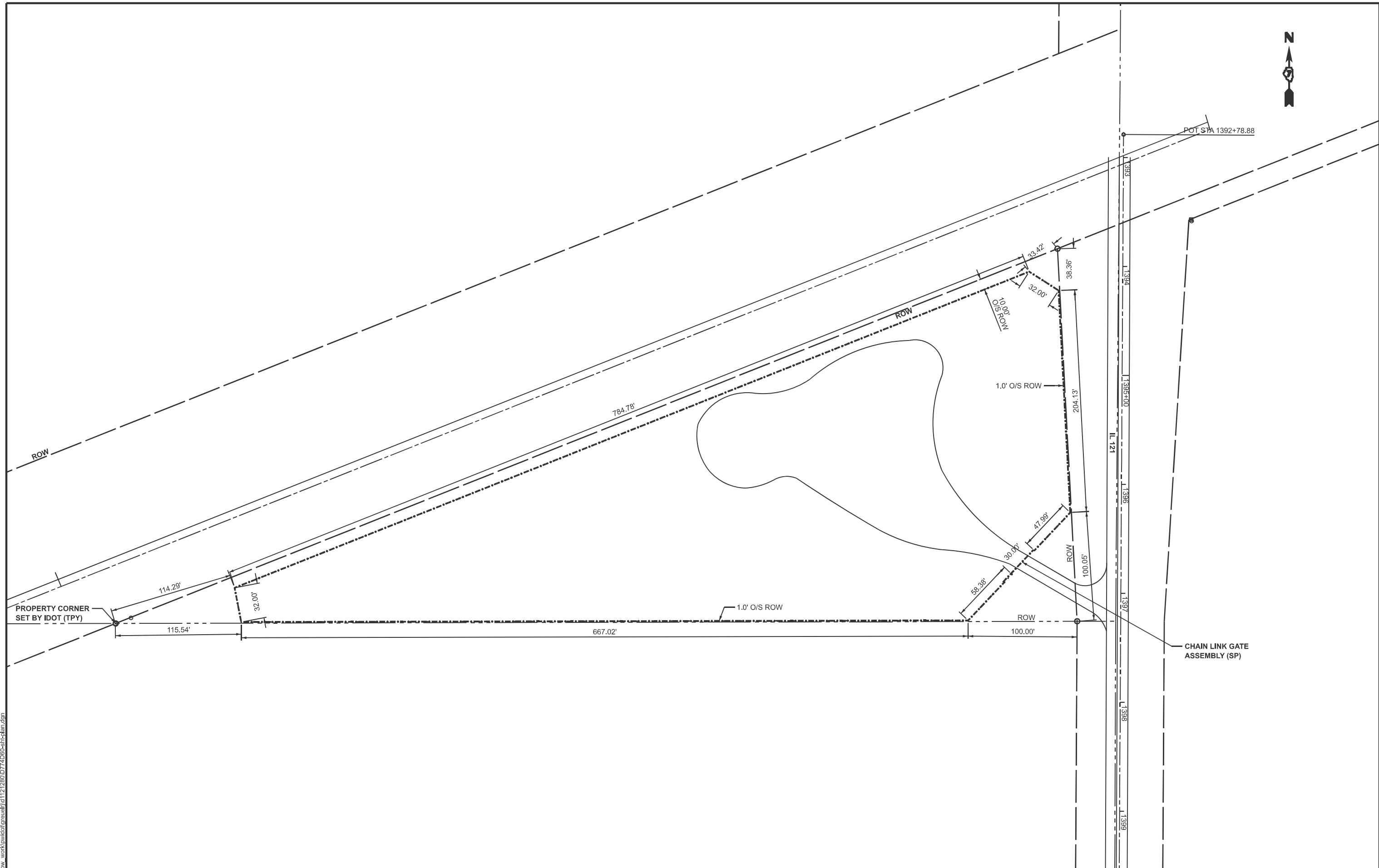
MODEL: Index of Sheets General notes [Sheet]  
 FILE NAME: c:\p\work\project\greuel\121280\074D60-shi-gemnote.dgn

USER NAME = robert.greuel	DESIGNED -	REVISED -	<b>STATE OF ILLINOIS DEPARTMENT OF TRANSPORTATION</b>	<b>INDEX OF SHEETS, HIGHWAY STANDARDS AND GENERAL NOTES</b>	F.A.S. RTE.	SECTION	COUNTY	TOTAL SHEETS	SHEET NO.
	DRAWN -	REVISED -			2801	103 FNC	FAYETTE	4	2
	CHECKED -	REVISED -			CONTRACT NO. 74D60				
PLOT DATE = 12/3/2025	DATE -	REVISED -			SCALE:	SHEET 1	OF 1	SHEETS	STA.

SUMMARY OF QUANTITIES				CONSTR. CODE
				100% STATE
CODE NO.	ITEM	UNIT	TOTAL QUANTITY	SAFETY
				0021 URBAN
66400305	CHAIN LINK FENCE, 6'	FOOT	1827	1827
67100100	MOBILIZATION	L SUM	1	1
X6640500	CHAIN LINK GATE ASSEMBLY (SPECIAL)	EACH	1	1

MODEL: Summary of Quantities (Sheet)  
FILE NAME: c:\p\work\view\col\greuel\fid121280\0774D60-sh-500.dgn

USER NAME = robert.greuel	DESIGNED -	REVISED -	<b>STATE OF ILLINOIS DEPARTMENT OF TRANSPORTATION</b>	<b>SUMMARY OF QUANTITIES</b>		F.A.S. RTE.	SECTION	COUNTY	TOTAL SHEETS	SHEET NO.
	DRAWN -	REVISED -				2801	103 FNC	FAYETTE	4	3
	CHECKED -	REVISED -				CONTRACT NO. 74D60				
PLOT DATE = 12/3/2025	DATE -	REVISED -		SCALE:	SHEET 1	OF 1	SHEETS	STA.	TO STA.	ILLINOIS FED. AID PROJECT



MODEL: Plan (Sheet)  
 FILE NAME: c:\pwworking\robert.greuel\fid1121280\0774560-shc-dam.dgn

USER NAME = robert.greuel	DESIGNED -	REVISED -
	DRAWN -	REVISED -
	CHECKED -	REVISED -
PLOT DATE = 1/28/2026	DATE -	REVISED -

**STATE OF ILLINOIS**  
**DEPARTMENT OF TRANSPORTATION**

<b>FENCE PLAN</b>			
SCALE:	SHEET 1	OF 1	SHEETS
	STA.	TO STA.	

F.A.S. RTE.	SECTION	COUNTY	TOTAL SHEETS	SHEET NO.
2801	103 FNC	FAYETTE	4	4
CONTRACT NO. 74D60				
ILLINOIS FED. AID PROJECT				