

INDEX OF SHEETS

<u>SHEET NO.</u>	<u>ITEM</u>
1	COVER SHEET
2	INDEX OF SHEETS, GENERAL NOTES, & HIGHWAY STANDARDS
3	SUMMARY OF QUANTITIES
4-5	SCHEDULE OF QUANTITIES
6	LOCATION MAP DETAIL SHEET

GENERAL NOTES

NO GENERAL NOTES. SEE SPECIAL PROVISIONS AND STANDARD SPECIFICATION BOOK.

THE FOLLOWING HIGHWAY STANDARDS ARE A PART OF THESE PLANS AND ARE INCLUDED FOLLOWING THE LAST NUMBERED SHEET IN THE PLANS.

<u>STD. NO.</u>	<u>DESCRIPTION</u>
000001-09	STANDARD SYMBOLS, ABBREVIATIONS AND PATTERNS
001001-02	AREAS OF REINFORCEMENT BARS
001006	DECIMAL OF AN INCH AND OF A FOOT
420001-11	PAVEMENT JOINTS
420701-03	PAVEMENT WELDED WIRE REINFORCEMENT
442101-09	CLASS B PATCHES
701001-02	OFF-ROAD OPERATIONS, 2L, 2W, MORE THAN 15' (4.5 M) AWAY
701006-05	OFF-ROAD OPERATIONS, 2L, 2W, 15' (4.5 M) TO 24" (600 MM) FROM PAVEMENT EDGE
701011-04	OFF-ROAD MOVING OPERATIONS, 2L, 2W, DAY ONLY
701201-05	LANE CLOSURE, 2L, 2W, DAY ONLY, FOR SPEEDS => 45 MPH
701301-04	LANE CLOSURE, 2L, 2W, SHORT TIME OPERATIONS
701400-12	APPROACH TO LANE CLOSURE, FREEWAY/EXPRESSWAY
701401-13	LANE CLOSURE, FREEWAY/EXPRESSWAY
701411-09	LANE CLOSURE, MULTILANE, AT ENTRANCE OR EXIT RAMP, FOR SPEEDS => 45 MPH
701456-05	PARTIAL EXIT RAMP CLOSURE FREEWAY/EXPRESSWAY
701901-11	TRAFFIC CONTROL DEVICES

COMMITMENTS:

1. NONE

MODEL: 74E20 [Sheet]
FILE NAME: c:\pw\work\wisconsin\bluemem\1155938\074E20-sheets-GeneralNotes.dgn

USER NAME = Maria.Bloemer	DESIGNED -	REVISED -
	DRAWN -	REVISED -
	CHECKED -	REVISED -
PLOT DATE = 1/28/2026	DATE -	REVISED -

STATE OF ILLINOIS
DEPARTMENT OF TRANSPORTATION

INDEX OF SHEETS, GENERAL NOTES,
& HIGHWAY STANDARDS

SCALE: SHEET 1 OF 1 SHEETS STA. TO STA.

F.A.P. RTE.	SECTION	COUNTY	TOTAL SHEETS	SHEET NO.
327.783	D7 PATCHING 2026-2	LAWRENCE	6	2
CONTRACT NO. 74E20				
ILLINOIS FED. AID PROJECT				

PATCHING SCHEDULE

PATCH NUMBER	LANE	LOCATION	MILEPOST	LENGTH (FT)	WIDTH (FT)	PLAN DEPTH (IN)	CL B	CL B	CL B	SAW CUTS	DOWEL BARS 1 1/2"	TIE BARS 3/4"	WELDED WIRE REINFORCEMENT
							PATCHES, TY 2, 13 in	PATCHES, TY 3, 13 in	PATCHES, TY 4, 13 in				
							44201007	44201011	44201013	44213200	44201299	44213204	44200050
							SY	SY	SY	FOOT	EACH	EACH	SY
1	EB	US 50	12.038	8.00	12.00	13.00	10.7			60.0	20		
2	EB	US 50	12.057	6.00	14.00	13.00	9.3			60.0	24		
3	EB	US 50	12.447	15.00	12.00	13.00		20.0		81.0	20		20.0
4	EB	US 50	12.466	15.00	12.00	13.00		20.0		81.0	20		20.0
5	WB	US 50	12.472	10.00	12.00	13.00	13.3			66.0	20		
6	EB	US 50	12.500	6.00	12.00	13.00	8.0			54.0	20		
7	EB	US 50	12.549	6.00	12.00	13.00	8.0			54.0	20		
8	EB	US 50	12.555	15.00	12.00	13.00		20.0		81.0	20		20.0
9	EB	US 50	12.600	6.00	12.00	13.00	8.0			54.0	20		
10	EB	US 50	12.653	6.00	12.00	13.00	8.0			54.0	20		
11	EB	US 50	12.671	6.00	12.00	13.00	8.0			54.0	20		
12	EB	US 50	12.680	6.00	14.00	13.00	9.3			60.0	24		
13	WB	US 50	12.680	10.00	12.00	13.00	13.3			66.0	20		
14	EB	US 50	13.047	20.00	12.00	13.00			26.7	96.0	20	9	26.7
15	EB	US 50	13.068	6.00	12.00	13.00	8.0			54.0	20		
16	EB	US 50	13.086	30.00	12.00	13.00			40.0	126.0	20	14	40.0
17	EB	US 50	13.408	6.00	12.00	13.00	8.0			54.0	20		
18	EB	US 50	13.418	6.00	12.00	13.00	8.0			54.0	20		
19	EBDL	US 50	14.193	6.00	12.00	13.00	8.0			54.0	20		
20	EBDL	US 50	14.228	6.00	12.00	13.00	8.0			54.0	20		
21	EBPL	US 50	14.228	6.00	12.00	13.00	8.0			54.0	20		
22	EBDL	US 50	14.330	15.00	12.00	13.00		20.0		81.0	20		20.0
23	EBDL	US 50	14.340	6.00	12.00	13.00	8.0			54.0	20		
24	EBDL	US 50	14.385	8.00	12.00	13.00	10.7			60.0	20		
25	EBDL	US 50	14.480	6.00	12.00	13.00	8.0			54.0	20		
26	EBDL	US 50	14.537	10.00	12.00	13.00	13.3			66.0	20		
27	EBDL	US 50	14.645	20.00	12.00	13.00			26.7	96.0	20	9	26.7
28	EBDL	US 50	14.679	12.00	12.00	13.00		16.0		72.0	20		16.0
29	EBDL	US 50	14.797	6.00	12.00	13.00	8.0			54.0	20		
30	WBDL	US 50	14.951	10.00	12.00	13.00	13.3			66.0	20		
31	WBPL	US 50	14.951	8.00	12.00	13.00	10.7			60.0	20		
32	WBDL	US 50	14.989	14.00	12.00	13.00		18.7		78.0	20		18.7
33	WBPL	US 50	14.989	14.00	12.00	13.00		18.7		78.0	20		18.7
34	WBDL	US 50	15.008	10.00	12.00	13.00	13.3			66.0	20		
35	WBDL	US 50	15.017	6.00	12.00	13.00	8.0			54.0	20		
36	WBPL	US 50	15.121	6.00	12.00	13.00	8.0			54.0	20		
37	EBDL	US 50	15.252	6.00	12.00	13.00	8.0			54.0	20		
38	EBDL	US 50	15.320	12.00	12.00	13.00		16.0		72.0	20		16.0
39	EBDL	US 50	15.542	8.00	12.00	13.00	10.7			60.0	20		
40	WBDL	US 50	15.549	6.00	12.00	13.00	8.0			54.0	20		
41	WBDL	US 50	15.618	10.00	12.00	13.00	13.3			66.0	20		
42	WBPL	US 50	15.618	6.00	12.00	13.00	8.0			54.0	20		
43	WBDL	US 50	15.636	6.00	12.00	13.00	8.0			54.0	20		
44	WBRAMP	US 50	15.636	6.00	12.00	13.00	8.0			54.0	20		
45	EBDL	US 50	15.738	6.00	12.00	13.00	8.0			54.0	20		
46	EBPL	US 50	15.738	6.00	12.00	13.00	8.0			54.0	20		
47	FRDI	US 50	15.751	6.00	12.00	13.00	8.0			54.0	20		
48	EBDL	US 50	15.788	15.00	12.00	13.00		20.0		81.0	20		20.0
49	EBDL	US 50	15.796	6.00	12.00	13.00	8.0			54.0	20		
50	EBDL	US 50	15.882	8.00	12.00	13.00	10.7			60.0	20		
SUBTOTAL SHEET 1							352.0	169.3	93.3	3189.0	1008	32	262.0

MODEL: 74E20 (Sheet)
FILE NAME: c:\pw\work\project\blower\mtd1155938\0774E20-sheets\Schedule.dgn

USER NAME = Maria.Bloemer	DESIGNED -	REVISED -
	DRAWN -	REVISED -
	CHECKED -	REVISED -
PLOT DATE = 1/28/2026	DATE -	REVISED -

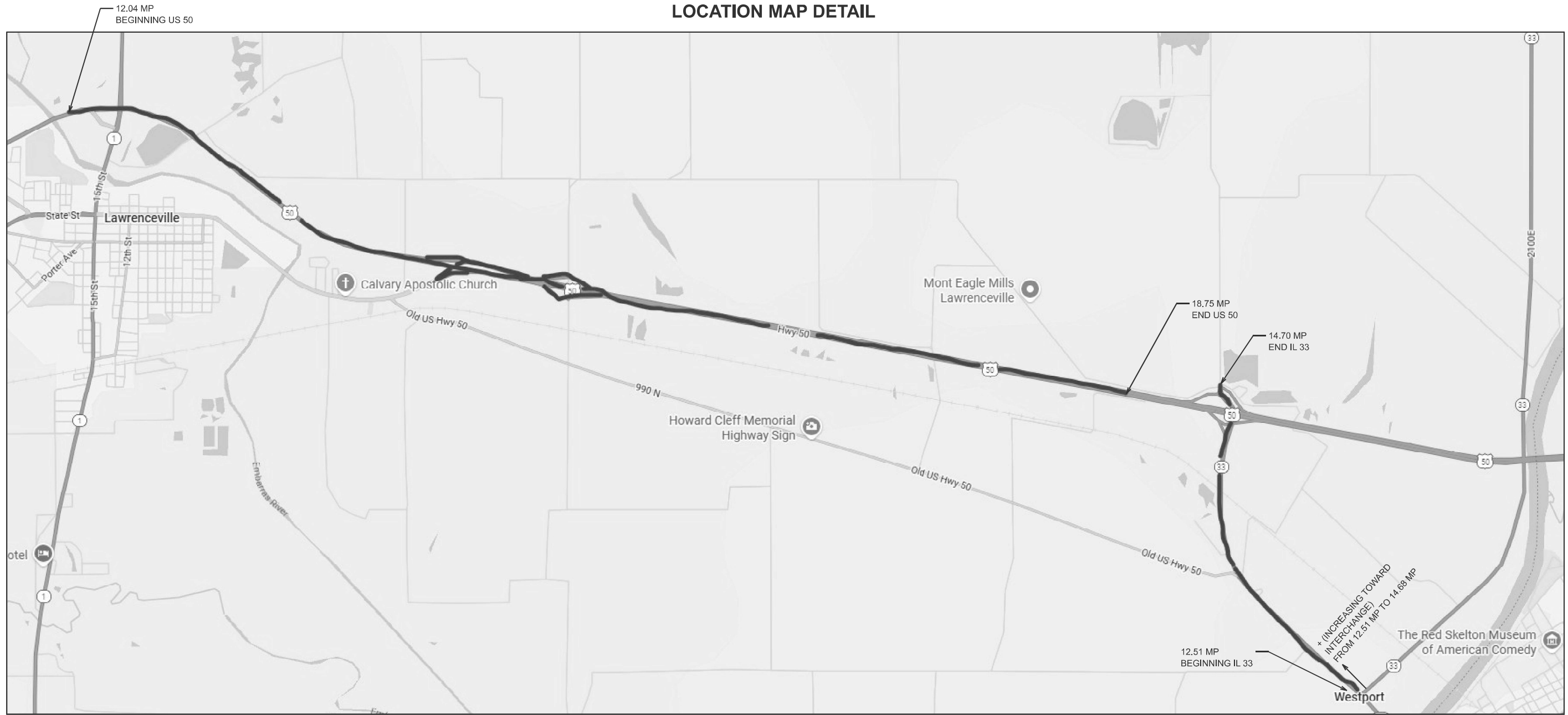
**STATE OF ILLINOIS
DEPARTMENT OF TRANSPORTATION**

SCHEDULE OF QUANTITIES

SCALE: SHEET 1 OF 2 SHEETS STA. TO STA.

F.A.P. RTE.	SECTION	COUNTY	TOTAL SHEETS	SHEET NO.
327.783	D7 PATCHING 2026-2	LAWRENCE	6	4
CONTRACT NO. 74E20				
ILLINOIS FED. AID PROJECT				

LOCATION MAP DETAIL



KEY:
 = PROJECT AREA

NOT TO SCALE

MODEL: 74E20 (Sheet)
 FILE NAME: c:\p\work\visio\blb\blb\mmd\1155938\074E20-sheets-LocationDetail.dgn

USER NAME = Maria.Bloemer	DESIGNED -	REVISED -
	DRAWN -	REVISED -
	CHECKED -	REVISED -
PLOT DATE = 1/30/2026	DATE -	REVISED -

**STATE OF ILLINOIS
 DEPARTMENT OF TRANSPORTATION**

LOCATION MAP DETAILS

SCALE: SHEET 1 OF 1 SHEETS STA. TO STA.

F.A.P. RTE.	SECTION	COUNTY	TOTAL SHEETS	SHEET NO.
327.783	D7 PATCHING 2026-2	LAWRENCE	6	6
CONTRACT NO. 74E20				
ILLINOIS		FED. AID PROJECT		