

STATE OF ILLINOIS  
DEPARTMENT OF TRANSPORTATION

F.A.P. RTE.	SECTION	COUNTY	TOTAL SHEETS	SHEET NO.
781	D7 TREE REMOVAL 2026-2	***	5	1
		ILLINOIS	CONTRACT NO. 74E23	

D-97-041-26



LOCATION OF SECTION INDICATED THUS: - [hatched box] OR [solid black box]

FOR INDEX OF SHEETS, SEE SHEET NO. 2  
ADT = 1000 (2025)

**PROPOSED  
HIGHWAY PLANS**  
FAP ROUTE 781 (ILL 33)  
SECTION : D7 TREE REMOVAL 2026-2  
TREE REMOVAL  
CRAWFORD & LAWRENCE COUNTIES

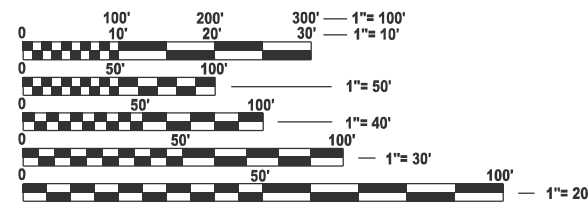
C-97-041-26



PROJECT BEGINS  
STA. 45+00  
CRAWFORD COUNTY

CRAWFORD / LAWRENCE  
COUNTY LINE

PROJECT ENDS  
STA. 932+28  
LAWRENCE COUNTY



FULL SIZE PLANS HAVE BEEN PREPARED USING STANDARD ENGINEERING SCALES. REDUCED SIZED PLANS WILL NOT CONFORM TO STANDARD SCALES. IN MAKING MEASUREMENTS ON REDUCED PLANS, THE ABOVE SCALES MAY BE USED.

J.U.L.I.E.  
JOINT UTILITY LOCATION INFORMATION FOR EXCAVATION  
1-800-892-0123  
OR 811

PROJECT ENGINEER: KALEB HIRTZEL (217) 342-8256  
PROJECT MANAGER: KYLE PRICE (217) 342-8244

LENGTH = 53,800 FT. = 10.2 MILES

CONTRACT NO. 74E23

STATE OF ILLINOIS  
DEPARTMENT OF TRANSPORTATION

SUBMITTED February 3, 2026  
*Teresa C. Price*  
REGIONAL ENGINEER

March 20, 2026  
*[Signature]*  
ENGINEER OF DESIGN AND ENVIRONMENT

March 20, 2026  
*[Signature]*  
DIRECTOR OF HIGHWAYS PROJECT IMPLEMENTATION

PRINTED BY THE AUTHORITY  
OF THE STATE OF ILLINOIS

## INDEX OF SHEETS

<u>SHEET No.</u>	<u>ITEM</u>
1	COVER SHEET
2	GENERAL NOTES, AND INDEX OF SHEETS
3	SUMMARY OF QUANTITIES
4-5	SCHEDULE OF QUANTITIES

## GENERAL NOTES

ALL TREES TO BE REMOVED WILL BE MARKED BY THE DISTRICT 7 RESIDENT ENGINEER.

RIGHT OF WAY LOCATIONS ARE TO BE VERIFIED BEFORE REMOVAL IS TO TAKE PLACE TO ENSURE THE TREES IN QUESTION ARE WITHIN STATE RIGHT OF WAY LIMITS.

TREES THREE (3) INCHES OR GREATER IN DIAMETER AT BREAST HEIGHT SHALL NOT BE CLEARED FROM APRIL 1 THROUGH SEPTEMBER 30 OF ANY GIVEN YEAR.

## TRAFFIC CONTROL STANDARDS

<u>STD. NO.</u>	<u>DESCRIPTION</u>
701001 -02	OFF-ROAD OPERATIONS, 2L, 2W, MORE THAN 15' (4.5 M) AWAY
701006 -05	OFF-ROAD OPERATIONS, 2L, 2W, 15' (4.5 M) TO 24" (600 MM) FROM PAVEMENT EDGE
701201 -05	LANE CLOSURE, 2L, 2W, DAY ONLY, FOR SPEEDS > 45 MPH
701301 -04	LANE CLOSURE, 2L, 2W, SHORT TIME OPERATIONS
701901 -11	TRAFFIC CONTROL DEVICES

MODEL: GENERAL NOTES (Sheet)  
FILE NAME: c:\p\work\avict\hille\ad1156128\ID74E23-GENERAL NOTES.dgn

	USER NAME = jessica.hille	DESIGNED -	REVISED -	<b>STATE OF ILLINOIS DEPARTMENT OF TRANSPORTATION</b>	<b>GENERAL NOTES, INDEX, &amp; STANDARDS</b>	F.A.P. RTE. 781	SECTION D7 TREE REMOVAL 2026-2	COUNTY **	TOTAL SHEETS 5	SHEET NO. 2
		DRAWN -	REVISED -			CONTRACT NO. 74E23				
		CHECKED -	REVISED -			ILLINOIS FED. AID PROJECT				
	PLOT DATE = 2/4/2026	DATE -	REVISED -		SCALE:	SHEET 1 OF 1 SHEETS STA. TO STA.				
** CRAWFORD & LAWRENCE										

MODEL: SOQ (Sheet)  
 FILE NAME: c:\p\work\wisconsin\hillead\156128\ID74E23-SOQ.dgn

CODE NO.	ITEM	UNIT	TOTAL QUANTITY	CONSTRUCTION CODE	
				CRAWFORD COUNTY	LAWRENCE COUNTY
				NONE	NONE
				0031 RURAL	0031 RURAL
20100110	TREE REMOVAL (6 TO 15 UNITS DIAMETER)	UNIT	647	569	78
20100210	TREE REMOVAL (OVER 15 UNITS DIAMETER)	UNIT	2860	1842	1018
67100100	MOBILIZATION	L SUM	1	0.5	0.5
70100450	TRAFFIC CONTROL AND PROTECTION, STANDARD 701201	L SUM	1	0.5	0.5
70107025	CHANGEABLE MESSAGE SIGN	CAL DA	28	14	14

100% STATE

USER NAME = jessica.hille	DESIGNED -	REVISED -
	DRAWN -	REVISED -
	CHECKED -	REVISED -
PLOT DATE = 2/4/2026	DATE -	REVISED -

**STATE OF ILLINOIS  
 DEPARTMENT OF TRANSPORTATION**

**SUMMARY OF QUANTITIES**

SCALE: SHEET 1 OF 1 SHEETS STA. TO STA.

F.A.P. RTE.	SECTION	COUNTY	TOTAL SHEETS	SHEET NO.
781	D7 TREE REMOVAL 2026-2	**	5	3
CONTRACT NO. 74E23				
ILLINOIS FED. AID PROJECT				

\*\* CRAWFORD & LAWRENCE

## CRAWFORD COUNTY TREE REMOVAL

RECORD No.	STATION	OFFSET FEET FROM (CL)	LEFT/RIGHT	TREE REMOVAL	TREE REMOVAL	ADDITIONAL NOTES
				(6 TO 15 UNITS)	(OVER 15 UNITS)	
				20100110	20100210	
1	45+00	36'	LT		36	
2	47+27	34'	RT		19	
3	50+90	38'	RT		31	
4	51+30	38'	RT		17	
5	54+37	33'	RT		47	
6	56+72	36'	RT		27	
7	134+87	18'	LT		41	
8	139+43	34'	RT		28	
9	145+63	32'	RT		50	
10	146+53	25'	LT		42	
11	250+48	30'	LT		40	
12	250+56	31'	RT		37	
13	261+50	24'	LT		32	
14	280+16	37'	RT		27	
15	280+44	33'	RT		40	
16	280+50	31'	RT		35	
17	351+66	32'	RT		28	
18	351+66	32'	RT		22	
19	356+47	28'	RT		20	
20	356+51	29'	RT		16	
21	357+05	25'	RT	13		
22	357+20	25'	RT	13		
23	357+36	25'	RT		35	
24	357+51	27'	RT	10		
25	357+55	27'	RT	8		
26	358+62	32'	RT	9		
27	358+69	34'	RT		20	
28	358+72	32'	RT	9		
29	359+03	36'	RT	11		
30	359+03	36'	RT		17	
31	359+03	36'	RT	13		
32	359+60	32'	RT	15		
33	359+75	40'	RT		24	
34	359+90	30'	RT	13		
35	360+34	30'	RT		16	
36	360+80	29'	RT	15		
37	361+09	31'	RT	10		
38	361+25	31'	RT	9		
39	361+60	33'	RT	10		
40	361+75	35'	RT	8		
41	362+37	36'	RT	12		
42	362+60	40'	RT	10		
43	362+82	36'	RT	6		
44	362+84	36'	RT	8		
45	375+22	38'	RT		40	
46	376+33	38'	RT		38	
47	406+27	23	LT		41	
48	423+46	21	LT		35	
49	426+60	24	LT		44	
50	428+28	30	LT		33	
51	429+00	28	LT		36	
52	433+50	32'	RT		38	
53	436+83	33'	RT		45	
54	437+67	25'	RT		41	
55	480+05	24'	LT		30	
56	482+28	39'	RT		48	
57	519+80	24'	LT		26	
58	519+92	38'	RT	6		
59	519+96	36'	RT	6		
60	519+98	38'	RT	8		

RECORD No.	STATION	OFFSET FEET FROM (CL)	LEFT/RIGHT	TREE REMOVAL	TREE REMOVAL	ADDITIONAL NOTES
				(6 TO 15 UNITS)	(OVER 15 UNITS)	
				20100110	20100210	
61	519+98	40'	RT		21	
62	520+02	40'	RT		21	
63	520+10	40'	RT	6		
64	520+16	36'	RT	7		
65	520+16	40'	RT	8		
66	520+26	38'	RT	6		
67	520+54	40'	RT		18	
68	520+56	38'	RT	7		
69	520+60	40'	RT	12		
70	520+60	36'	RT		17	
71	520+66	42'	RT	11		
72	520+70	30'	RT	6		
73	520+72	36'	RT		28	
74	520+76	26'	RT	7		
75	520+76	29'	RT	6		
76	520+88	40'	RT		24	
77	520+96	32'	RT	9		
78	521+06	40'	RT		21	
79	521+10	40'	RT		25	
80	521+22	38'	RT	6		
81	521+62	42'	RT	6		
82	521+77	39'	RT		20	
83	569+36	30'	RT		46	
84	576+45	24'	RT		27	
85-109	582+50 585+00			250	250	APPROXIMATELY 25 TREES IN THIS AREA
110	594+90	30'	RT		44	
111	598+35	30'	RT		38	
<b>CRAWFORD COUNTY TOTALS</b>				<b>569</b>	<b>1842</b>	

MODEL: SCHEDULE OF QTY'S (Sheet)  
FILE NAME: c:\pwworking\hillead\1156128\128\128\128\SCHEDULE OF QTY'S.dgn

USER NAME = jessica.hille	DESIGNED -	REVISED -
	DRAWN -	REVISED -
	CHECKED -	REVISED -
PLOT DATE = 2/4/2026	DATE -	REVISED -

**STATE OF ILLINOIS  
DEPARTMENT OF TRANSPORTATION**

**SCHEDULE OF QUANTITIES**

SCALE: SHEET 1 OF 2 SHEETS STA. TO STA.

F.A.P. RTE.	SECTION	COUNTY	TOTAL SHEETS	SHEET NO.
781	D7 TREE REMOVAL 2026-2	**	5	4
CONTRACT NO. 74E23				
ILLINOIS FED. AID PROJECT				

\*\* CRAWFORD & LAWRENCE

# LAWRENCE COUNTY TREE REMOVAL

## LAWRENCE COUNTY TREE REMOVAL

RECORD No.	STATION	OFFSET FEET FROM (CL)	LEFT/RIGHT	TREE REMOVAL (6 TO 15 UNITS)	TREE REMOVAL (OVER 15 UNITS)	ADDITIONAL NOTES
				20100110	20100210	
112	639+76	26'	RT		30	
113	641+50	24'	RT		42	
114	652+08	36'	LT		23	
115	653+60	33'	LT		20	
116	655+43	35'	LT	9		
117	655+66	35'	LT	11		
118	655+68	35'	LT	13		
119	656+14	35'	LT		19	
120	656+23	35'	LT	12		
121	656+52	35'	LT		19	
122	656+73	35'	LT		19	
123	657+16	35'	LT		16	
124	728+01	30'	LT		23	
125	728+10	27'	RT		44	
126	730+44	27'	RT		23	
127	730+84	27'	RT		28	
128	733+73	27'	RT		25	
129	733+75	27'	RT	10		
130	733+90	27'	RT	8		
131	733+97	27'	RT		26	
132	738+05	18'	RT		19	
133	738+28	18'	RT	15		
134	738+95	18'	RT		24	
135	739+03	18'	RT		21	
136	739+21	18'	RT		22	
137	739+76	18'	RT		18	
138	747+30	30'	LT		40	NORTH END OF RUSSELVILLE
139	747+47	18'	RT		42	
140	749+81	30'	RT		24	
141	794+05	24'	RT		34	
142	794+30	33'	LT		38	
143	795+29	27'	LT		33	
144	795+85	30'	LT		28	
145	797+61	30'	LT		28	
146	797+99	30'	LT		22	
147	798+24	30'	LT		30	SOUTH END OF RUSSELVILLE
148	848+02	38'	RT		28	
149	856+78	21'	RT		36	
150	862+30	36'	LT		33	
151	868+40	38	LT		37	
152	869+75	35'	RT		36	
153	932+25	24'	RT		32	
154	932+28	33'	RT		36	
<b>LAWRENCE COUNTY TOTALS</b>				<b>78</b>	<b>1018</b>	
<b>CRAWFORD AND LAWRENCE COMBINED TOTALS</b>				<b>647</b>	<b>2860</b>	

MODEL: SCHEDULE OF QTY-S-1 (Sheet)  
FILE NAME: c:\pwworkspace\hillead\1561281D774E23-SCHEDULE OF QTY-S.dgn

USER NAME = jessica.hille	DESIGNED -	REVISED -
	DRAWN -	REVISED -
	CHECKED -	REVISED -
PLOT DATE = 2/4/2026	DATE -	REVISED -

**STATE OF ILLINOIS  
DEPARTMENT OF TRANSPORTATION**

**SCHEDULE OF QUANTITIES**

SCALE: SHEET 2 OF 2 SHEETS STA. TO STA.

F.A.P. RTE.	SECTION	COUNTY	TOTAL SHEETS	SHEET NO.
781	D7 TREE REMOVAL 2026-2	**	5	5
CONTRACT NO. 74E23				
ILLINOIS FED. AID PROJECT				

\*\* CRAWFORD & LAWRENCE