

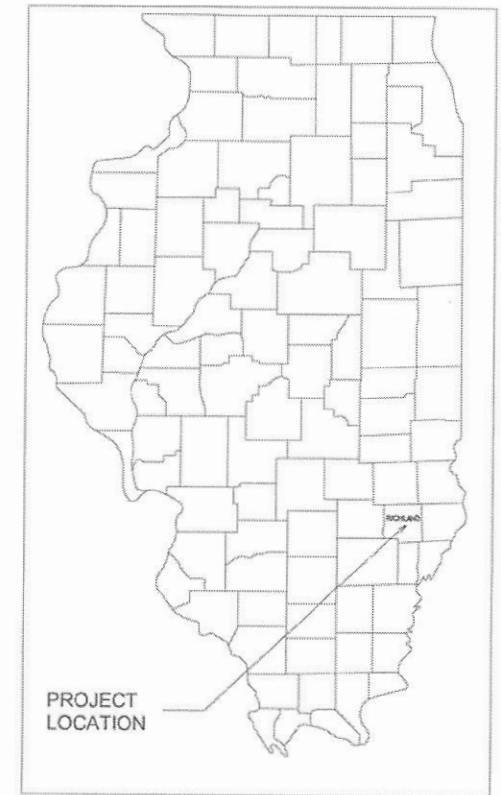
04-24-2026 LETTING ITEM 164

STATE OF ILLINOIS  
DEPARTMENT OF TRANSPORTATION  
DIVISION OF HIGHWAYS

PLANS FOR PROPOSED  
HIGHWAY SAFETY IMPROVEMENT PROGRAM PROJECT

SECTION 23-00130-00-SD  
RICHLAND COUNTY  
PROJECT T5UL(360)  
FAS 705 (St. Marie Road)  
C-97-087-24

| ROUTE          | SECTION        | COUNTY   | TOTAL SHEETS      | SHEET NO. |
|----------------|----------------|----------|-------------------|-----------|
| FAS 705        | 23-00130-00-SD | RICHLAND | 6                 | 1         |
| CONTRACT 95A04 |                | ILLINOIS | PROJECT T5UL(360) |           |

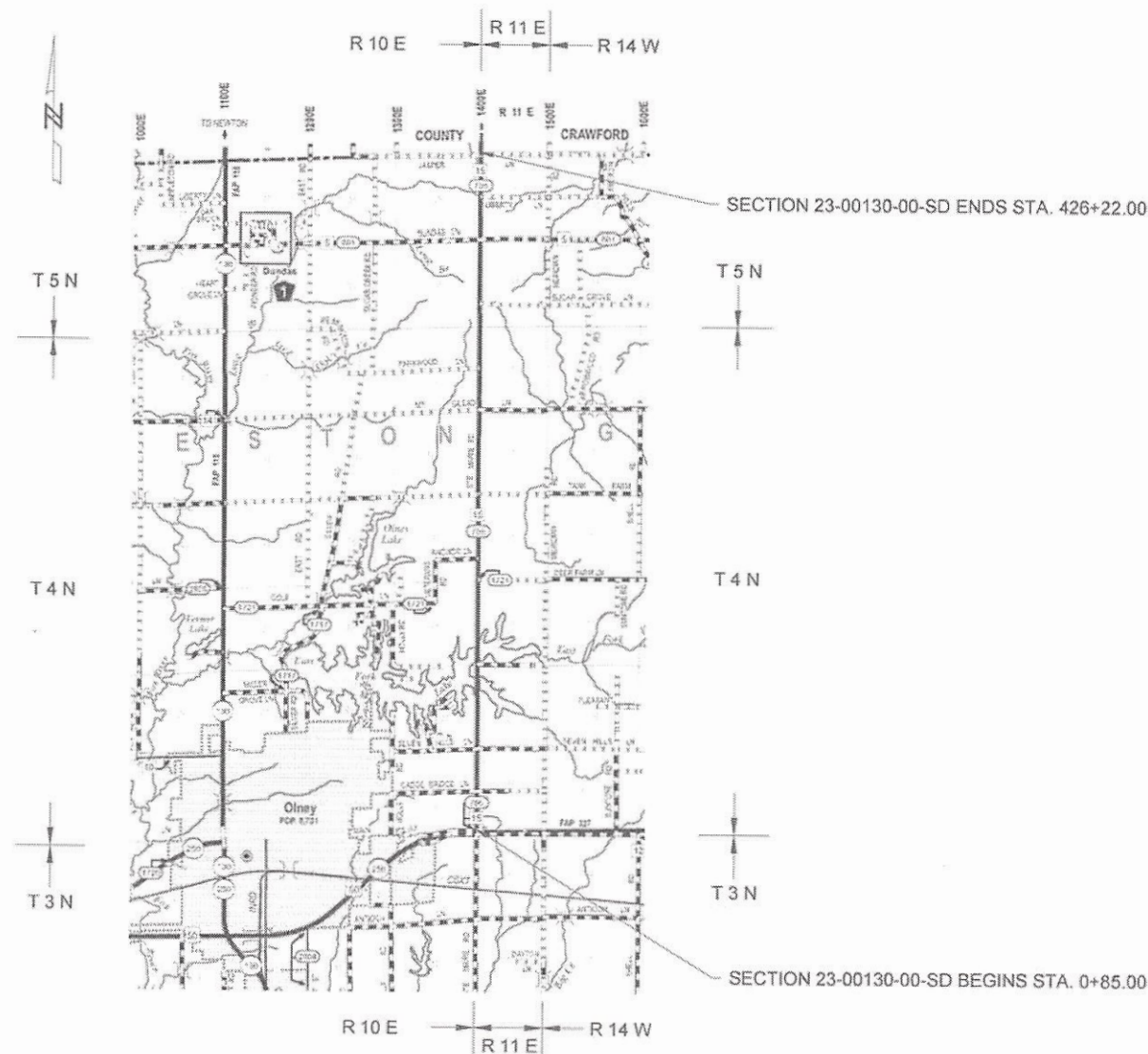


INDEX OF SHEETS

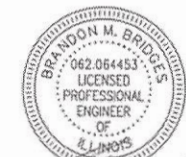
| SHEET | ITEM                                    |
|-------|---|
| 1     | COVER SHEET                             |
| 2     | SUMMARY OF QUANTITIES AND GENERAL NOTES |
| 3     | TYPICAL SECTIONS                        |
| 4     | SCHEDULE OF QUANTITIES                  |
| 5     | MISCELLANEOUS DETAILS                   |
| 6     | TRAFFIC CONTROL PLAN                    |

HIGHWAY STANDARDS:

|                    |  |
|--------------------|--|
| STANDARD 000001-09 | STANDARD SYMBOLS, ABBREVIATIONS, AND PATTERNS                              |
| STANDARD 642005-01 | SHOULDER RUMBLE STRIPS, 8 IN.  |
| STANDARD 701001-02 | OFF-RD OPERATIONS, 2L, 2W, MORE THAN 15' FT AWAY                           |
| STANDARD 701005-05 | OFF-RD OPERATIONS, 2L, 2W, 15' TO 24" FROM PAVEMENT EDGE                   |
| STANDARD 701011-04 | OFF-RD MOVING OPERATIONS 2L, 2W, DAY ONLY                                  |
| STANDARD 701201-05 | LANE CLOSURE, 2L, 2W, DAY ONLY, FOR SPEEDS ≥ 45 MPH                        |
| STANDARD 701301-04 | LANE CLOSURE, 2L, 2W, SHORT TIME OPERATIONS                                |
| STANDARD 701305-04 | LANE CLOSURE, 2L, 2W, SLOW MOVING OPERATIONS DAY ONLY, FOR SPEEDS ≥ 45 MPH |
| STANDARD 701901-11 | TRAFFIC CONTROL DEVICES  |
| STANDARD 720001-01 | SIGN PANEL MOUNTING DETAILS  |
| STANDARD 720005-04 | SIGN PANEL ERECTION DETAILS  |
| STANDARD 728001-01 | TELESCOPING STEEL SIGN SUPPORT   |
| STANDARD BLR 24-2  | MAILBOX TURNOUTS FOR LOCAL ROADS   |



GROSS LENGTH = NET LENGTH SECTION 23-00130-00-SD = 42,537.00 Ft. = 8.056 Mi.



*Brandon M. Brides*  
1/21/2026

LICENSE EXPIRES 11/30/2027

**CHARLESTON ENGINEERING, INC.**  
CONSULTING ENGINEERS - LAND SURVEYORS  
105 NORTH KITCHELL AVENUE  
P.O. BOX 397  
OLNEY, ILLINOIS 62450  
(618) 392-0735  
ILLINOIS DEPARTMENT OF PROFESSIONAL REGULATION REGISTRATION #184 003513

APPROVED January 23, 2026  
*Danny J. Colwell, P.E.*  
COUNTY ENGINEER

STATE OF ILLINOIS  
DEPARTMENT OF TRANSPORTATION

PASSED 01/23/26  
*Beth Hall*  
DISTRICT SEVEN ENGINEER OF  
LOCAL ROADS AND STREETS

Releasing For  
Bid Based on  
Limited Review  
01/23/26  
*Teresa C. Smith*  
REGION FOUR ENGINEER

J.U.L.I.E.  
JOINT UTILITY LOCATING INFORMATION FOR EXCAVATORS  
1-800-892-0123 OR 811  
WEBSITE: <https://www.illinois1call.com/>

CONTRACT 95A04  
FUNCTIONAL CLASSIFICATION - MAJOR COLLECTOR  
ADT = 1750  
DESIGN SPEED = 50 MPH

**GENERAL NOTES**

THE CONTRACTOR SHALL CONTACT JULIE (1-800-892-0123) BEFORE COMMENCING WORK. THE CONTRACTOR IS RESPONSIBLE FOR MAKING HIS OWN DETERMINATION AS TO THE TYPE AND LOCATION OF UNDERGROUND AND OTHER UTILITIES AS MAY BE NECESSARY TO AVOID DAMAGE THERETO. THE CONTRACTOR SHALL BE RESPONSIBLE FOR LOCATING ALL UNDERGROUND UTILITIES AND COORDINATION WITH UTILITY COMPANIES.

THE FOLLOWING RATES HAVE BEEN USED TO CALCULATE PLAN QUANTITIES:  
 AGGREGATE SURFACE COURSE, TYPE-B 2.0 TONS/CU YD  
 HOT-MIX ASPHALT SHOULDERS 112 LBS/(SQ YD \* INCH THICKNESS)

| SUMMARY OF QUANTITIES |   |       |                |
|-----------------------|---|-------|----------------|
| CODE NO.              | ITEM                                      | UNIT  | TOTAL QUANTITY |
| 40200800              | AGGREGATE SURFACE COURSE, TYPE B          | TON   | 318            |
| 48203100              | HOT-MIX ASPHALT SHOULDERS                 | TON   | 16,690         |
| 64200108              | SHOULDER RUMBLE STRIPS, 8 INCH            | FOOT  | 77,046         |
| 67100100              | MOBILIZATION                              | L SUM | 1              |
| * 72000100            | SIGN PANEL - TYPE 1                       | SQ FT | 37.8           |
| * 72800100            | TELESCOPING STEEL SIGN SUPPORT            | FOOT  | 96             |
| X4404262              | SHOULDER REMOVAL (SPECIAL)                | SQ YD | 36,807         |
| X7010216              | TRAFFIC CONTROL AND PROTECTION, (SPECIAL) | L SUM | 1              |
| Z0013798              | CONSTRUCTION LAYOUT                       | L SUM | 1              |

\* SPECIALTY ITEM

THE FOLLOWING MIXTURE REQUIREMENTS ARE APPLICABLE TO THIS PROJECT:

| LOCATION(S)             | MIXTURE USE(S)   | PG       | DESIGN AIR VOIDS | MIXTURE COMPOSITION | FRICTION AGGREGATE | MIXTURE WEIGHT | QUALITY MANAGEMENT PROGRAM | SUBLOT SIZE | MATERIAL TRANSFER DEVICE (REQUIRED?) |
|-------------------------|--|----------|------------------|---------------------|--------------------|----------------|----------------------------|-------------|--------------------------------------|
| HMA SHOULDERS - 6" & 8" | HMA SURFACE COURSE, IL-9.5, MIX "C", N70 (TOP LIFT - 2") | PG 64-22 | 4.0% @ N=70      | IL - 9.5            | MIXTURE C          | N70            | QCGA                       | 3000        | N/A                                  |
| HMA SHOULDERS - 6" & 8" | HMA BINDER COURSE, IL-10.0, N70 (BOTTOM LIFT - 4" & 6")  | PG 64-22 | 4.0% @ N=70      | IL - 10.0           | N/A                | N70            | QCGA                       | 3000        | N/A                                  |

**SCHEDULE OF KNOWN UTILITIES**

DESIGN STAGE JULIE NO. A250081135 AND A250081146

| UTILITY COMPANY                | TYPE          | CONTACT NAME        | PHONE NUMBER | E-MAIL ADDRESS                       | MAILING ADDRESS                              |
|--------------------------------|---------------|---------------------|--------------|--------------------------------------|--|
| AMEREN ILLINOIS                | ELECTRIC      | RON BAILEY, P.E.    | 618-395-5641 | rbailey2@ameren.com                  | 4978 N IL 130, OLNEY, IL 62450               |
| AT&T TRANSMISSION              | COMMUNICATION | VANESSA ROSS        | 217-381-4284 | vf2021@att.com                       | 2500 COLT ROAD, SPRINGFIELD, IL 62707        |
| AT&T METRO                     | COMMUNICATION | TIM LAPORTE         | 281-352-3631 | tl0695@att.com                       | 1010 PINE ST. 19 W-C-01, ST. LOUIS, MO 63101 |
| BP OIL PIPELINE COMPANY        | PETROLEUM     | BLAKE PATRICK       | 872-245-3915 | bloke.patrick@bp.com                 |  |
| STATE OF ILLINOIS CMS          | COMMUNICATION | STEVE CREASEY       | 217-299-9312 | doit.icn.focpoint@illinois.gov       | 108 S. MAIN STREET, DIETERICH, IL 62424      |
| EJ WATER COOPERATIVE           | WATER         | DEAN SWINGLER       | 217-925-5566 | DSWINGLER@EJWATERCOOP.COM            | 104 RUNDLE ST, FLAT ROCK, IL 62427           |
| FLAT ROCK TELEPHONE CO-OP      | COMMUNICATION | VINCENT DECKER      | 618-584-3211 | vince@frtc.net                       | 225 E. CHESTNUT ST, OLNEY, IL 62450          |
| FRONTIER COMMUNICATIONS        | COMMUNICATION | BRIAN VANGUNDY      | 618-395-6189 | brian.vangundy@ftr.com               | 1927 MILLER DRIVE, OLNEY, IL 62450           |
| ILLINOIS GAS COMPANY           | GAS LINE      | JORDAN KOCHER, P.E. | 618-395-8588 | jkocher@ilgas.com                    |  |
| WINDSTREAM KOL                 | COMMUNICATION | LOCATE DESK         | 800-288-1901 | locate.desk@windstream.com           |  |
| METRO COMMUNICATIONS           | COMMUNICATION | TAYLOR RICH         | 217-728-9056 | trich@metrocomm.com                  | 8 SOUTH WASHINGTON ST, SULLIVAN, IL 61951    |
| NORRIS ELECTRIC CO-OP          | ELECTRIC      | TIM HUBER           | 618-783-8765 | thuber@norriselectric.com            | 8543 N. ILLINOIS 130, NEWTON, IL 62448       |
| NEW WAVE COMMUNICATIONS        | COMMUNICATION | JOEL HARRRELSON     | 618-383-2650 | joel.harrrelson@sparklight.biz       | 113 W 9TH ST, MT CARMEL, IL 62863            |
| SEAMLESS FIBER INNOVATION, LLC | COMMUNICATION | TED NIEMERG         | 217-821-6312 | support@seamlessfiberinnovations.com |  |
| WABASH COMMUNICATIONS          | COMMUNICATION | STEVE HOSSELTON     | 618-665-3311 | shosselton@wabaash.net               | 14415 US HWY 45 SOUTH, LOUISVILLE, IL 62858  |

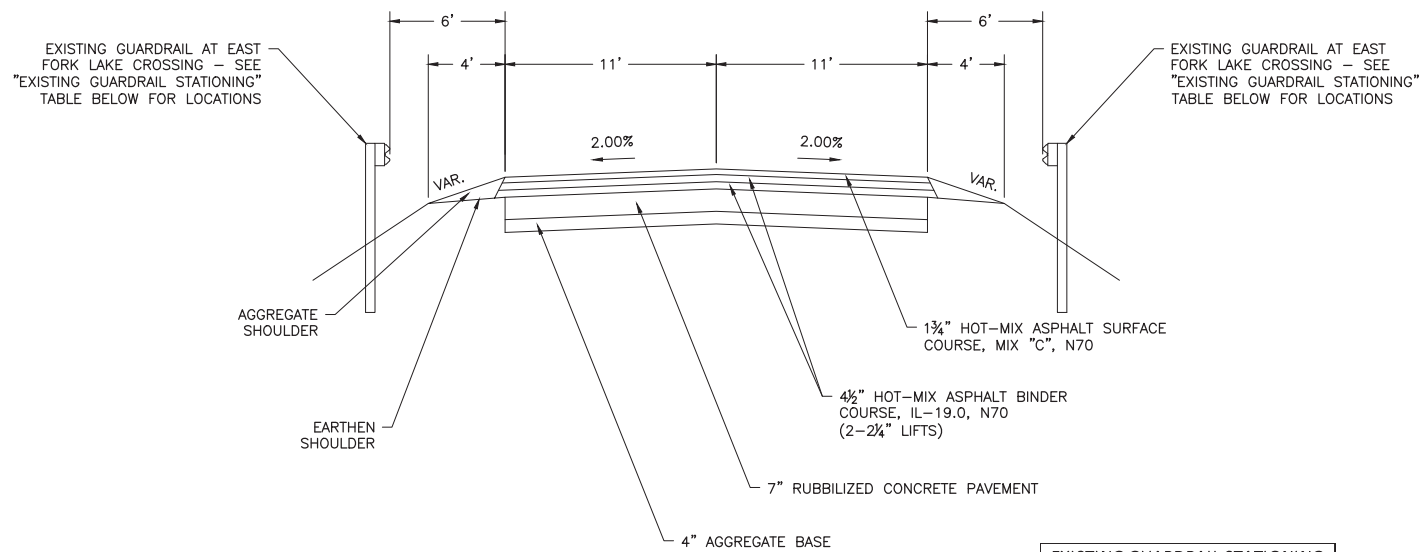
**CHARLESTON ENGINEERING, INC.**  
 CONSULTING ENGINEERS - LAND SURVEYORS  
 105 NORTH MITCHELL AVENUE OLNEY, ILLINOIS 62450  
 P.O. BOX 297 (618) 592-0729  
 ILLINOIS DEPARTMENT OF PROFESSIONAL REGULATION REGISTRATION #184-003513

|                   |            |
|-------------------|------------|
| DESIGNED -- BMB   | REVISED -- |
| DRAWN -- BMB      | REVISED -- |
| CHECKED -- BMB    | REVISED -- |
| DATE -- 1-19-2026 | REVISED -- |

STATE OF ILLINOIS  
 DEPARTMENT OF TRANSPORTATION

SUMMARY OF QUANTITIES AND GENERAL NOTES

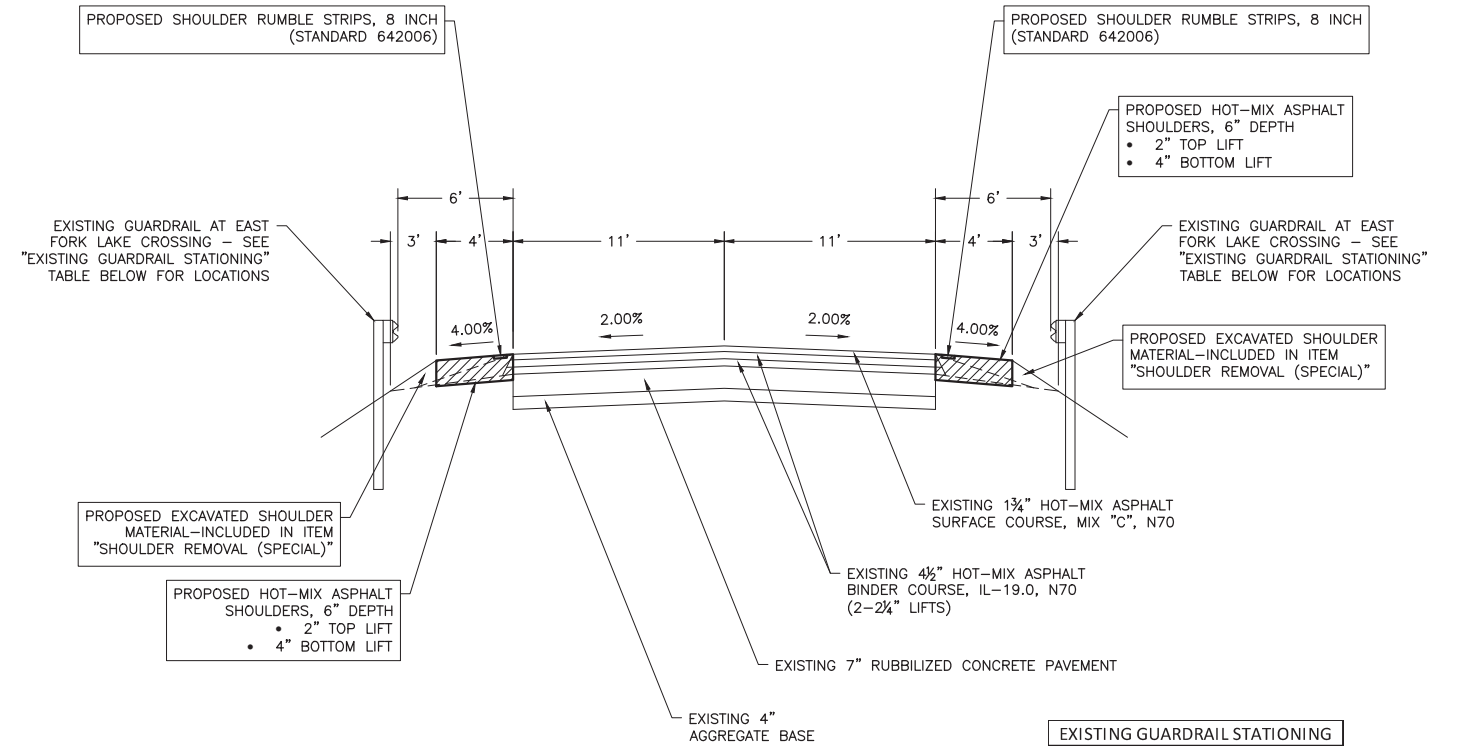
|                |                |          |                   |           |
|----------------|----------------|----------|-------------------|-----------|
| ROUTE          | SECTION        | COUNTY   | TOTAL SHEETS      | SHEET NO. |
| FAS 705        | 23-00130-00-SD | RICHLAND | 6                 | 2         |
| CONTRACT 95A04 |                | ILLINOIS | PROJECT TSUL(360) |           |



**EXISTING TYPICAL CROSS SECTION**

STA. 0+85 TO STA. 214+10  
N.T.S.

| EXISTING GUARDRAIL STATIONING |                    |             |
|-------------------------------|--------------------|-------------|
| LOCATION                      | STATION TO STATION | LENGTH (FT) |
| LT.                           | 85+19 TO 99+60     | 1441        |
| RT.                           | 91+69 TO 99+72     | 803         |
| LT.                           | 107+79 TO 119+20   | 1141        |
| RT.                           | 108+66 TO 121+70   | 1304        |

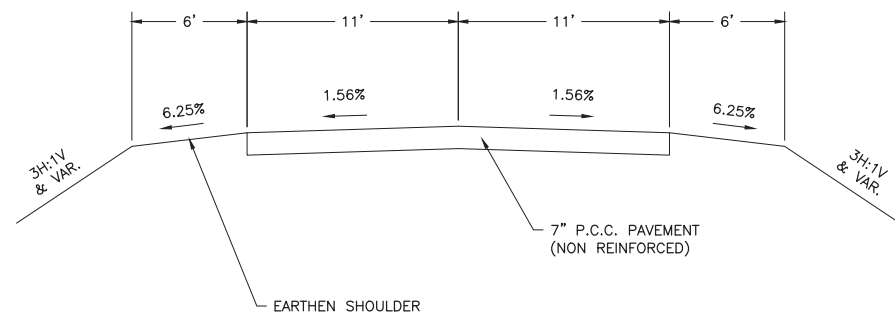


**PROPOSED TYPICAL CROSS SECTION**

STA. 0+85 TO STA. 214+10  
N.T.S.

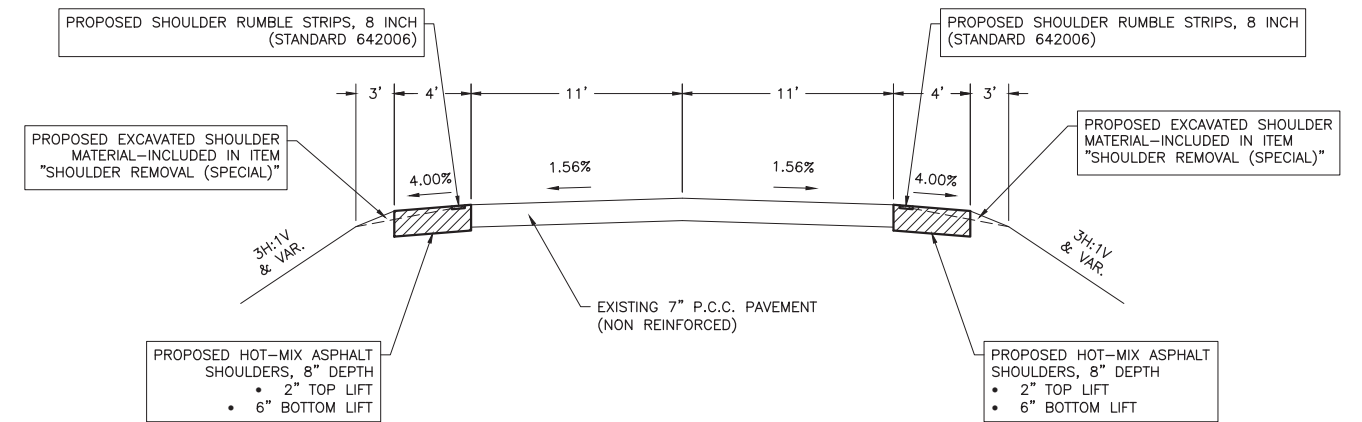
| EXISTING GUARDRAIL STATIONING |                    |             |
|-------------------------------|--------------------|-------------|
| LOCATION                      | STATION TO STATION | LENGTH (FT) |
| LT.                           | 85+19 TO 99+60     | 1441        |
| RT.                           | 91+69 TO 99+72     | 803         |
| LT.                           | 107+79 TO 119+20   | 1141        |
| RT.                           | 108+66 TO 121+70   | 1304        |

NOTE: SEE "HOT-MIX ASPHALT SHOULDER PAVING SCHEDULE" ON SHEET 4 FOR PROPOSED "HOT-MIX ASPHALT SHOULDERS" DEPTH TRANSITION STATION.



**EXISTING TYPICAL CROSS SECTION**

STA. 214+10 TO STA. 426+22  
N.T.S.



**PROPOSED TYPICAL CROSS SECTION**

STA. 214+10 TO STA. 426+22  
N.T.S.

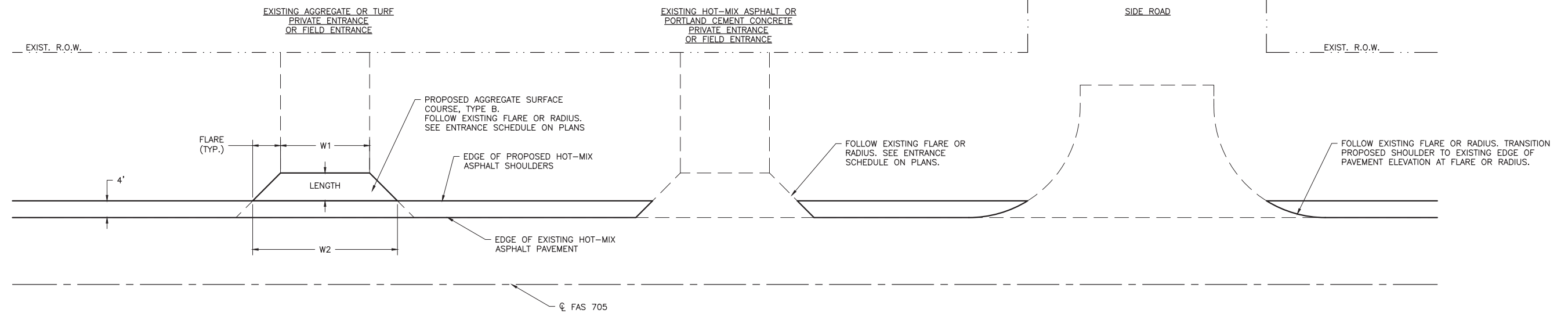
NOTE: SEE "HOT-MIX ASPHALT SHOULDER PAVING SCHEDULE" ON SHEET 4 FOR PROPOSED "HOT-MIX ASPHALT SHOULDERS" DEPTH TRANSITION STATION.

| HOT-MIX ASPHALT SHOULDER PAVING SCHEDULE |    |           |        |          |                            |                              |                     |                                 |                                       |       |
|--|----|-----------|--------|----------|----------------------------|------------------------------|---------------------|---------------------------------|---------------------------------------|-------|
| PAVEMENT STRUCTURE                       |    | SHOULDERS |        |          |                            |                              |                     |                                 |                                       |       |
| CODE NUMBER                              |    |           |        | X4404262 | 48203100                   |                              |                     | 64200108                        |                                       |       |
| STATION TO STATION                       |    | LOCATION  | LENGTH | WIDTH    | SHOULDER REMOVAL (SPECIAL) | HMA UNIT WEIGHT (LB/SQYD*IN) | SHOULDER DEPTH (IN) | HOT-MIX ASPHALT SHOULDERS (TON) | SHOULDER RUMBLE STRIPS, 8 INCH (FOOT) |       |
|  |    |           | (FT)   | (FT)     | (SQ YD)                    | (LB/SQYD*IN)                 | (IN)                | (TON)                           | (FOOT)                                |       |
| +85                                      | TO | 23+04     | RT     | 2,219    | 4                          | 987                          | 112                 | 6                               | 382                                   | 2,219 |
| 23+35                                    | TO | 24+85     | RT     | 150      | 4                          | 67                           | 112                 | 6                               | 27                                    | 150   |
| 25+40                                    | TO | 28+56     | RT     | 316      | 4                          | 141                          | 112                 | 6                               | 56                                    | 316   |
| 28+85                                    | TO | 30+00     | RT     | 115      | 4                          | 52                           | 112                 | 6                               | 21                                    | 115   |
| 30+30                                    | TO | 33+14     | RT     | 284      | 4                          | 127                          | 112                 | 6                               | 50                                    | 284   |
| 33+56                                    | TO | 37+20     | RT     | 364      | 4                          | 162                          | 112                 | 6                               | 64                                    | 364   |
| 37+49                                    | TO | 41+67     | RT     | 418      | 4                          | 186                          | 112                 | 6                               | 73                                    | 418   |
| 41+98                                    | TO | 43+82     | RT     | 184      | 4                          | 82                           | 112                 | 6                               | 33                                    | 184   |
| 44+12                                    | TO | 46+77     | RT     | 265      | 4                          | 118                          | 112                 | 6                               | 46                                    | 265   |
| 47+03                                    | TO | 48+11     | RT     | 108      | 4                          | 48                           | 112                 | 6                               | 20                                    | 108   |
| 48+93                                    | TO | 52+00     | RT     | 307      | 4                          | 137                          | 112                 | 6                               | 55                                    | 307   |
| 52+55                                    | TO | 104+97    | RT     | 5,242    | 4                          | 2,330                        | 112                 | 6                               | 901                                   | 5,242 |
| 105+48                                   | TO | 127+39    | RT     | 2,191    | 4                          | 974                          | 112                 | 6                               | 378                                   | 2,191 |
| 127+68                                   | TO | 130+61    | RT     | 293      | 4                          | 131                          | 112                 | 6                               | 52                                    | 293   |
| 130+90                                   | TO | 158+68    | RT     | 2,778    | 4                          | 1,235                        | 112                 | 6                               | 478                                   | 2,778 |
| 159+16                                   | TO | 171+01    | RT     | 1,185    | 4                          | 527                          | 112                 | 6                               | 205                                   | 1,185 |
| 171+57                                   | TO | 180+85    | RT     | 928      | 4                          | 413                          | 112                 | 6                               | 160                                   | 928   |
| 181+16                                   | TO | 212+13    | RT     | 3,097    | 4                          | 1,377                        | 112                 | 6                               | 533                                   | 3,097 |
| 212+70                                   | TO | 244+28    | RT     | 3,158    | 4                          | 1,404                        | 112                 | 8                               | 724                                   | 3,158 |
| 244+59                                   | TO | 265+25    | RT     | 2,066    | 4                          | 919                          | 112                 | 8                               | 474                                   | 2,066 |
| 265+77                                   | TO | 303+08    | RT     | 3,731    | 4                          | 1,659                        | 112                 | 8                               | 856                                   | 3,731 |
| 303+37                                   | TO | 332+48    | RT     | 2,911    | 4                          | 1,294                        | 112                 | 8                               | 667                                   | 2,911 |
| 332+99                                   | TO | 363+28    | RT     | 3,029    | 4                          | 1,347                        | 112                 | 8                               | 695                                   | 3,029 |
| 363+53                                   | TO | 365+93    | RT     | 240      | 4                          | 107                          | 112                 | 8                               | 56                                    | 240   |
| 366+19                                   | TO | 372+43    | RT     | 624      | 4                          | 278                          | 112                 | 8                               | 144                                   | 624   |
| 372+98                                   | TO | 399+40    | RT     | 2,642    | 4                          | 1,175                        | 112                 | 8                               | 607                                   | 2,642 |
| 399+91                                   | TO | 402+32    | RT     | 241      | 4                          | 108                          | 112                 | 8                               | 57                                    | 241   |
| 402+61                                   | TO | 426+22    | RT     | 2,361    | 4                          | 1,050                        | 112                 | 8                               | 542                                   | 2,361 |
| 1+00                                     | TO | 24+84     | LT     | 2,384    | 4                          | 1,060                        | 112                 | 6                               | 411                                   | 2,384 |
| 25+37                                    | TO | 30+80     | LT     | 543      | 4                          | 242                          | 112                 | 6                               | 95                                    | 543   |
| 31+21                                    | TO | 33+11     | LT     | 190      | 4                          | 85                           | 112                 | 6                               | 34                                    | 190   |
| 33+40                                    | TO | 36+16     | LT     | 276      | 4                          | 123                          | 112                 | 6                               | 49                                    | 276   |
| 36+44                                    | TO | 40+23     | LT     | 379      | 4                          | 169                          | 112                 | 6                               | 66                                    | 379   |
| 41+05                                    | TO | 43+00     | LT     | 195      | 4                          | 87                           | 112                 | 6                               | 35                                    | 195   |
| 43+42                                    | TO | 46+34     | LT     | 292      | 4                          | 130                          | 112                 | 6                               | 51                                    | 292   |
| 46+70                                    | TO | 49+14     | LT     | 244      | 4                          | 109                          | 112                 | 6                               | 43                                    | 244   |
| 49+52                                    | TO | 51+46     | LT     | 194      | 4                          | 87                           | 112                 | 6                               | 35                                    | 194   |
| 51+98                                    | TO | 71+47     | LT     | 1,949    | 4                          | 867                          | 112                 | 6                               | 336                                   | 1,949 |
| 71+95                                    | TO | 78+54     | LT     | 659      | 4                          | 293                          | 112                 | 6                               | 114                                   | 659   |
| 78+84                                    | TO | 101+68    | LT     | 2,284    | 4                          | 1,016                        | 112                 | 6                               | 394                                   | 2,284 |
| 102+40                                   | TO | 105+05    | LT     | 265      | 4                          | 118                          | 112                 | 6                               | 46                                    | 265   |
| 105+34                                   | TO | 106+31    | LT     | 97       | 4                          | 44                           | 112                 | 6                               | 18                                    | 97    |
| 106+60                                   | TO | 119+27    | LT     | 1,267    | 4                          | 564                          | 112                 | 6                               | 219                                   | 1,267 |
| 119+57                                   | TO | 123+83    | LT     | 426      | 4                          | 190                          | 112                 | 6                               | 74                                    | 426   |
| 124+36                                   | TO | 155+76    | LT     | 3,140    | 4                          | 1,396                        | 112                 | 6                               | 541                                   | 3,140 |
| 156+06                                   | TO | 171+70    | LT     | 1,564    | 4                          | 696                          | 112                 | 6                               | 270                                   | 1,564 |
| 172+24                                   | TO | 211+70    | LT     | 3,946    | 4                          | 1,754                        | 112                 | 6                               | 679                                   | 3,946 |
| 212+21                                   | TO | 215+55    | LT     | 334      | 4                          | 149                          | 112                 | 8                               | 78                                    | 334   |
| 215+84                                   | TO | 265+22    | LT     | 4,938    | 4                          | 2,195                        | 112                 | 8                               | 1,132                                 | 4,938 |
| 265+71                                   | TO | 291+68    | LT     | 2,597    | 4                          | 1,155                        | 112                 | 8                               | 596                                   | 2,597 |
| 292+19                                   | TO | 340+10    | LT     | 4,791    | 4                          | 2,130                        | 112                 | 8                               | 1,099                                 | 4,791 |
| 340+40                                   | TO | 372+40    | LT     | 3,200    | 4                          | 1,423                        | 112                 | 8                               | 734                                   | 3,200 |
| 372+96                                   | TO | 373+92    | LT     | 96       | 4                          | 43                           | 112                 | 8                               | 23                                    | 96    |
| 374+21                                   | TO | 387+08    | LT     | 1,287    | 4                          | 572                          | 112                 | 8                               | 296                                   | 1,287 |
| 387+37                                   | TO | 397+63    | LT     | 1,026    | 4                          | 456                          | 112                 | 8                               | 236                                   | 1,026 |
| 397+96                                   | TO | 399+26    | LT     | 130      | 4                          | 58                           | 112                 | 8                               | 30                                    | 130   |
| 399+59                                   | TO | 425+52    | LT     | 2,593    | 4                          | 1,153                        | 112                 | 8                               | 595                                   | 2,593 |
| 426+04                                   | TO | 426+22    | LT     | 18       | 4                          | 8                            | 112                 | 8                               | 5                                     | 18    |
| <b>SUB-TOTALS =</b>                      |    |           |        |          | <b>36,807</b>              |                              |                     | <b>16,690</b>                   | <b>82,751</b>                         |       |
| <b>OMISSIONS =</b>                       |    |           |        |          |                            |                              |                     |                                 | <b>5,705</b>                          |       |
| <b>TOTALS =</b>                          |    |           |        |          | <b>36,807</b>              |                              |                     | <b>16,690</b>                   | <b>77,046</b>                         |       |

NOTES: 1. OMIT SHOULDER RUMBLE STRIPS AT ALL PRIVATE ENTRANCES, FIELD ENTRANCES, MAILBOX TURNOUTS, AND STRUCTURES.

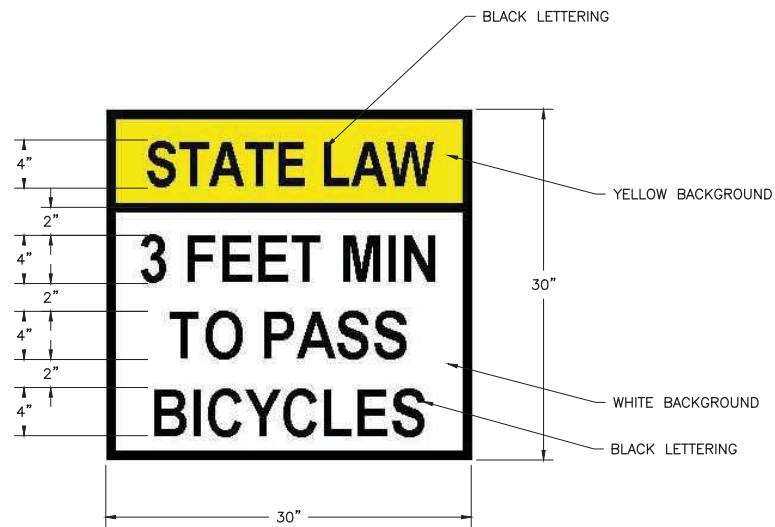
| SHOULDER RUMBLE STRIP OMISSION SCHEDULE |    |          |        |                    |        | SHOULDER RUMBLE STRIP OMISSION SCHEDULE |                   |                    |        |          |             |  |
|---|----|----------|--------|--------------------|--------|---|-------------------|--------------------|--------|----------|-------------|--|
| STATION TO STATION                      |    | LOCATION | LENGTH | STATION TO STATION |        | LOCATION                                | LENGTH            | STATION TO STATION |        | LOCATION | LENGTH      |  |
|   |    |          | (FT)   |                    |        |   | (FT)              |                    |        |          | (FT)        |  |
| 22+93                                   | TO | 23+46    | RT     | 53                 | 24+74  | TO                                      | 25+47             | LT                 | 73     |          |             |  |
| 24+75                                   | TO | 25+50    | RT     | 75                 | 30+69  | TO                                      | 31+25             | LT                 | 56     |          |             |  |
| 28+51                                   | TO | 28+95    | RT     | 44                 | 32+96  | TO                                      | 33+48             | LT                 | 52     |          |             |  |
| 29+89                                   | TO | 30+40    | RT     | 51                 | 36+06  | TO                                      | 36+46             | LT                 | 40     |          |             |  |
| 33+10                                   | TO | 33+76    | RT     | 66                 | 38+48  | TO                                      | 38+88             | LT                 | 40     |          |             |  |
| 37+09                                   | TO | 37+70    | RT     | 61                 | 40+14  | TO                                      | 41+20             | LT                 | 106    |          |             |  |
| 41+09                                   | TO | 41+39    | RT     | 30                 | 42+78  | TO                                      | 43+52             | LT                 | 74     |          |             |  |
| 41+58                                   | TO | 42+16    | RT     | 58                 | 46+20  | TO                                      | 46+81             | LT                 | 61     |          |             |  |
| 43+69                                   | TO | 44+35    | RT     | 66                 | 49+01  | TO                                      | 49+57             | LT                 | 56     |          |             |  |
| 46+70                                   | TO | 47+11    | RT     | 41                 | 51+39  | TO                                      | 52+11             | LT                 | 72     |          |             |  |
| 48+00                                   | TO | 49+02    | RT     | 102                | 53+14  | TO                                      | 53+44             | LT                 | 30     |          |             |  |
| 51+89                                   | TO | 52+69    | RT     | 80                 | 71+40  | TO                                      | 72+01             | LT                 | 61     |          |             |  |
| 55+05                                   | TO | 55+36    | RT     | 31                 | 78+44  | TO                                      | 78+98             | LT                 | 54     |          |             |  |
| 65+62                                   | TO | 65+96    | RT     | 34                 | 101+66 | TO                                      | 102+44            | LT                 | 78     |          |             |  |
| 72+38                                   | TO | 72+75    | RT     | 37                 | 103+22 | TO                                      | 103+55            | LT                 | 33     |          |             |  |
| 78+29                                   | TO | 78+69    | RT     | 40                 | 104+94 | TO                                      | 105+46            | LT                 | 52     |          |             |  |
| 104+88                                  | TO | 105+60   | RT     | 72                 | 106+20 | TO                                      | 106+71            | LT                 | 51     |          |             |  |
| 127+27                                  | TO | 128+79   | RT     | 152                | 119+17 | TO                                      | 119+69            | LT                 | 52     |          |             |  |
| 130+51                                  | TO | 131+01   | RT     | 50                 | 123+71 | TO                                      | 124+48            | LT                 | 77     |          |             |  |
| 131+76                                  | TO | 132+19   | RT     | 43                 | 124+87 | TO                                      | 125+43            | LT                 | 56     |          |             |  |
| 141+19                                  | TO | 141+52   | RT     | 33                 | 131+78 | TO                                      | 132+15            | LT                 | 37     |          |             |  |
| 151+92                                  | TO | 152+28   | RT     | 36                 | 144+84 | TO                                      | 145+19            | LT                 | 35     |          |             |  |
| 157+34                                  | TO | 157+64   | RT     | 30                 | 154+72 | TO                                      | 155+03            | LT                 | 31     |          |             |  |
| 158+55                                  | TO | 159+28   | RT     | 73                 | 155+64 | TO                                      | 156+15            | LT                 | 51     |          |             |  |
| 170+92                                  | TO | 171+66   | RT     | 74                 | 158+85 | TO                                      | 159+31            | LT                 | 46     |          |             |  |
| 177+26                                  | TO | 177+52   | RT     | 26                 | 171+15 | TO                                      | 172+36            | LT                 | 121    |          |             |  |
| 180+76                                  | TO | 181+26   | RT     | 50                 | 180+52 | TO                                      | 181+03            | LT                 | 51     |          |             |  |
| 185+57                                  | TO | 185+90   | RT     | 33                 | 185+42 | TO                                      | 185+73            | LT                 | 31     |          |             |  |
| 201+12                                  | TO | 201+48   | RT     | 36                 | 210+43 | TO                                      | 210+72            | LT                 | 29     |          |             |  |
| 210+96                                  | TO | 211+46   | RT     | 50                 | 211+58 | TO                                      | 212+32            | LT                 | 74     |          |             |  |
| 212+07                                  | TO | 212+80   | RT     | 73                 | 215+50 | TO                                      | 215+92            | LT                 | 42     |          |             |  |
| 224+56                                  | TO | 224+88   | RT     | 32                 | 226+68 | TO                                      | 227+03            | LT                 | 35     |          |             |  |
| 235+08                                  | TO | 235+43   | RT     | 35                 | 235+00 | TO                                      | 235+30            | LT                 | 30     |          |             |  |
| 244+17                                  | TO | 244+67   | RT     | 50                 | 251+02 | TO                                      | 251+32            | LT                 | 30     |          |             |  |
| 265+11                                  | TO | 265+88   | RT     | 77                 | 265+10 | TO                                      | 265+86            | LT                 | 76     |          |             |  |
| 278+88                                  | TO | 279+22   | RT     | 34                 | 278+91 | TO                                      | 279+25            | LT                 | 34     |          |             |  |
| 303+01                                  | TO | 303+48   | RT     | 47                 | 291+56 | TO                                      | 292+32            | LT                 | 76     |          |             |  |
| 308+62                                  | TO | 308+93   | RT     | 31                 | 304+62 | TO                                      | 304+96            | LT                 | 34     |          |             |  |
| 318+59                                  | TO | 318+88   | RT     | 29                 | 311+81 | TO                                      | 312+11            | LT                 | 30     |          |             |  |
| 332+37                                  | TO | 333+12   | RT     | 75                 | 318+58 | TO                                      | 318+88            | LT                 | 30     |          |             |  |
| 340+57                                  | TO | 341+00   | RT     | 43                 | 328+31 | TO                                      | 328+82            | LT                 | 51     |          |             |  |
| 345+94                                  | TO | 346+26   | RT     | 32                 | 332+74 | TO                                      | 333+14            | LT                 | 40     |          |             |  |
| 363+20                                  | TO | 363+78   | RT     | 58                 | 338+00 | TO                                      | 338+52            | LT                 | 52     |          |             |  |
| 365+84                                  | TO | 366+42   | RT     | 58                 | 339+23 | TO                                      | 339+57            | LT                 | 34     |          |             |  |
| 372+28                                  | TO | 373+10   | RT     | 82                 | 340+00 | TO                                      | 340+51            | LT                 | 51     |          |             |  |
| 385+77                                  | TO | 386+14   | RT     | 37                 | 345+26 | TO                                      | 345+74            | LT                 | 48     |          |             |  |
| 386+21                                  | TO | 386+56   | RT     | 35                 | 346+09 | TO                                      | 346+43            | LT                 | 34     |          |             |  |
| 394+14                                  | TO | 394+52   | RT     | 38                 | 352+62 | TO                                      | 352+98            | LT                 | 36     |          |             |  |
| 399+26                                  | TO | 400+05   | RT     | 79                 | 364+23 | TO                                      | 364+55            | LT                 | 32     |          |             |  |
| 402+21                                  | TO | 402+72   | RT     | 51                 | 371+66 | TO                                      | 372+02            | LT                 | 36     |          |             |  |
| 406+28                                  | TO | 406+64   | RT     | 36                 | 372+27 | TO                                      | 373+09            | LT                 | 82     |          |             |  |
| 420+98                                  | TO | 421+27   | RT     | 29                 | 373+86 | TO                                      | 374+32            | LT                 | 46     |          |             |  |
| 423+92                                  | TO | 424+24   | RT     | 32                 | 375+11 | TO                                      | 375+45            | LT                 | 34     |          |             |  |
| <b>SUBTOTAL =</b>                       |    |          |        |                    |        | <b>2720</b>                             |                   |                    |        |          |             |  |
|   |    |          |        |                    |        |   | 386+96            | TO                 | 387+46 | LT       | 50          |  |
|   |    |          |        |                    |        |   | 394+15            | TO                 | 394+53 | LT       | 38          |  |
|   |    |          |        |                    |        |   | 397+52            | TO                 | 398+18 | LT       | 66          |  |
|   |    |          |        |                    |        |   | 399+14            | TO                 | 399+68 | LT       | 54          |  |
|   |    |          |        |                    |        |   | 401+88            | TO                 | 402+26 | LT       | 38          |  |
|   |    |          |        |                    |        |   | 406+28            | TO                 | 406+62 | LT       | 34          |  |
|   |    |          |        |                    |        |   | <b>SUBTOTAL =</b> |                    |        |          | <b>2985</b> |  |
|   |    |          |        |                    |        |   | <b>TOTAL =</b>    |                    |        |          | <b>5705</b> |  |

| AGGREGATE SURFACE COURSE SCHEDULE |          |      |                           |                                  |        |        |        |        |         |
|-----------------------------------|----------|------|---------------------------|----------------------------------|--------|--------|--------|--------|---------|
| CODE NUMBER                       |          |      |                           | 40200800                         |        |        |        |        |         |
| STATION                           | LOCATION | TYPE | PROPOSED SURFACE MATERIAL | AGGREGATE SURFACE COURSE, TYPE-B | W1     | W2     | LENGTH | RADIUS |         |
|                                   |          |      |                           |                                  | (TONS) | (FEET) | (FEET) | (FEET) | (FEET)  |
| 38+66                             | LT       | PE   | AGG.                      | 6.0                              | 38     | 30     | 8      | 4      | ' FLARE |
| 53+30                             | LT       | FE   | AGG.                      | 4.0                              | 26     | 18     | 8      | 4      | ' FLARE |
| 55+20                             | RT       | FE   | AGG.                      | 4.0                              | 24     | 16     | 8      | 4      | ' FLARE |
| 65+80                             | RT       | FE   | AGG.                      | 4.0                              | 28     | 20     | 8      | 4      | ' FLARE |
| 72+56                             | RT       | FE   | AGG.                      | 5.0                              | 30     | 22     | 8      | 4      | ' FLARE |
| 78+46                             | RT       |      |                           |                                  |        |        |        |        |         |



**SIDE ROAD AND ENTRANCE DETAIL**

- DRAWING NOT TO SCALE
- DETAIL APPLICABLE FROM STA. 0+85.00 TO STA. 426+22.00.
- AT SIDEROAD LOCATIONS AND PORTLAND CEMENT CONCRETE AND BITUMINOUS ENTRANCES - CONSTRUCT THE PROPOSED HOT-MIX ASPHALT SHOULDER TO THE POINT WHERE THE 4 FOOT WIDTH INTERSECTS WITH THE OUTSIDE RADIUS OF THE SIDEROAD OR ENTRANCE.
- AT FIELD ENTRANCE LOCATIONS, MAILBOX TURNOUTS, AND AGGREGATE/TURF ENTRANCES, THE FULL DEPTH OF THE PROPOSED HOT-MIX ASPHALT SHOULDER SHALL CONTINUE THROUGH THE EXISTING ENTRANCES/MAILBOX TURNOUTS. THE OUTSIDE EDGE OF THE PROPOSED SHOULDER SHALL BE TAPERED DOWN TO THE EXISTING ENTRANCE ELEVATION TO MAKE A SMOOTH TRANSITION. ALL EXCAVATION AND PAVEMENT REMOVAL THROUGH THE ENTRANCES AND MAILBOX TURNOUTS SHALL BE INCLUDED IN PAY ITEM "SHOULDER REMOVAL (SPECIAL)." ANY ADDITIONAL MATERIAL USED AT THESE TRANSITIONS WILL BE PAID FOR AT THE CONTRACT UNIT PRICE OF "HOT-MIX ASPHALT SHOULDERS" OR "AGGREGATE SURFACE COURSE, TYPE B," DEPENDING ON THE MATERIAL TYPE AT EACH INDIVIDUAL ENTRANCE.

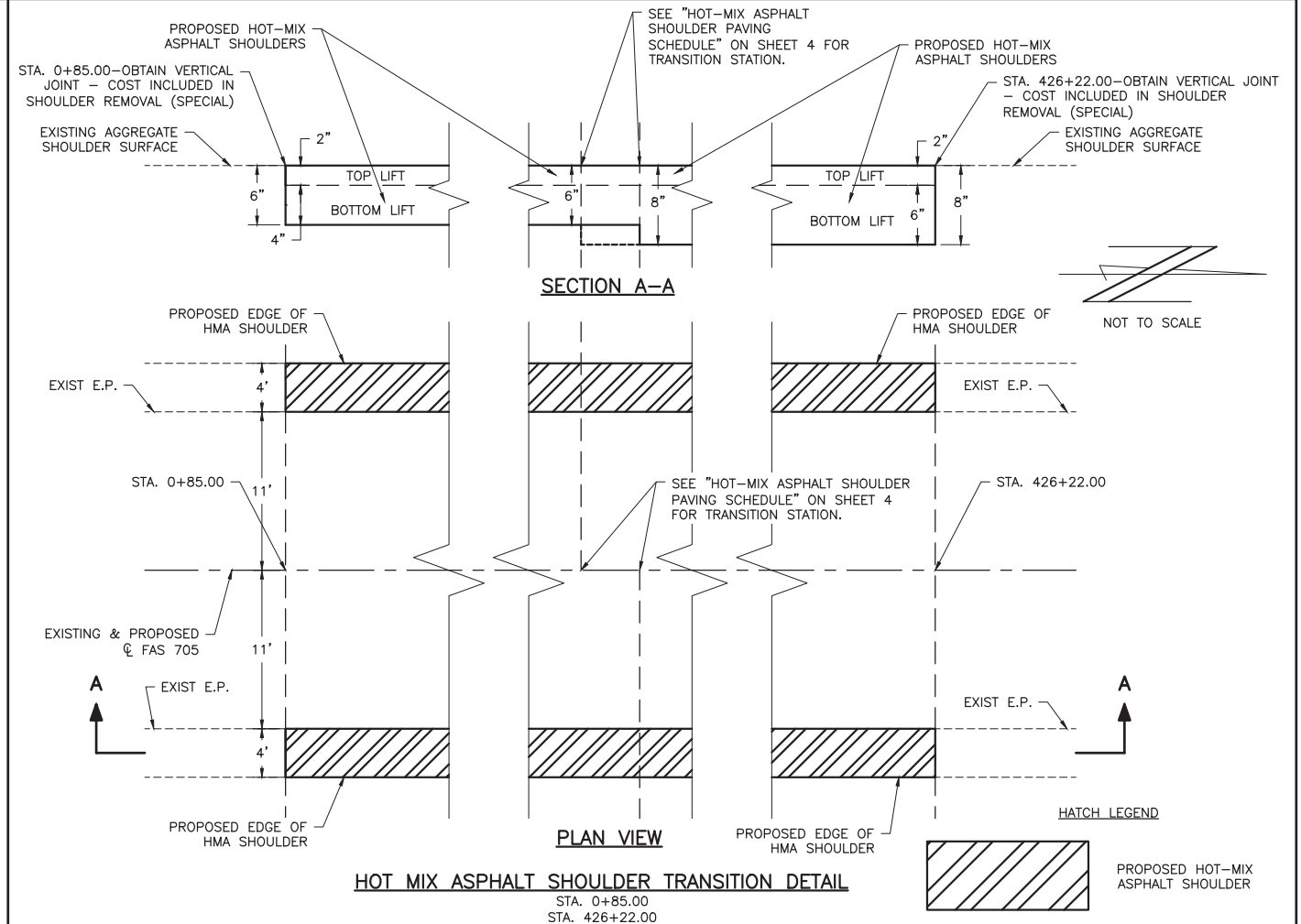


**SIGN PANEL - TYPE 1 DETAIL**

- DRAWING NOT TO SCALE
- LETTERING STYLE AND COLOR AND SIGN PANEL BACKGROUND COLORS SHALL BE IN ACCORDANCE WITH THE LATEST EDITION OF THE MUTCD.

| EXISTING A.R. CULVERTS |         |                        |                       |   |
|------------------------|---------|------------------------|-----------------------|---|
| LOCATION               | STATION | TYPE                   | SIZE (FT)             | END TREATMENT                                 |
| AR                     | 94+72   | R.C.C.P.               | 2 - 42" Ø             | PCC HEADWALL - US & DS                        |
| AR                     | 85+71   | R.C.C.P.               | 48" Ø                 | NONE (BELOW E.F. LAKE POOL)                   |
| AR                     | 94+98   | R.C. BOX               | 10' RISE X 10' SPAN   | PCC HEADWALL - US & DS (BELOW E.F. LAKE POOL) |
| AR                     | 111+48  | R.C. BOX               | 12' RISE X 12' SPAN   | PCC HEADWALL - US & DS (BELOW E.F. LAKE POOL) |
| AR                     | 137+40  | R.C.C.P.               | 42" Ø                 | PCC HEADWALL - US & DS                        |
| AR                     | 150+14  | R.C.C.P.               | 24" Ø                 | PCC HEADWALL - US & DS                        |
| AR                     | 156+50  | R.C.C.P.               | 36" Ø                 | PCC HEADWALL - US & DS                        |
| AR                     | 206+94  | R.C.C.P.               | 2 - 36" Ø             | PCC HEADWALL - US & DS                        |
| AR                     | 225+15  | R.C. DOUBLE BARREL BOX | 2 - 2' RISE X 6' SPAN | PCC HEADWALL - US & DS                        |
| AR                     | 318+44  | R.C.C.P.               | 30" Ø                 | PCC HEADWALL - US & DS                        |
| AR                     | 335+51  | R.C.C.P.               | 30" Ø                 | PCC HEADWALL - US & DS                        |
| AR                     | 359+70  | R.C.C.P.               | 48" Ø                 | PCC HEADWALL - US & DS                        |
| AR                     | 372+41  | R.C.C.P.               | 36" Ø                 | PCC HEADWALL - US & DS                        |
| AR                     | 372+97  | R.C.C.P.               | 36" Ø                 | PCC HEADWALL - US & DS                        |
| AR                     | 399+60  | R.C.C.P.               | 24" Ø                 | PCC HEADWALL - US                             |
| AR-LT                  | 399+66  | R.C.C.P.               | 30" Ø                 | PCC HEADWALL - DS                             |
| AR                     | 399+75  | R.C.C.P.               | 18" Ø                 | PCC HEADWALL - US                             |
| AR                     | 417+10  | R.C.C.P.               | 24" Ø                 | PCC HEADWALL - US & DS                        |
| AR                     | 422+98  | R.C. BOX               | 2' RISE X 5' SPAN     | PCC HEADWALL - US & DS                        |

NOTE: EDGE OF HEADWALLS ARE LOCATED 10 FT +/- OFF EDGE OF EXISTING PAVEMENT.



**LEGEND**

- ( ) MULTIPLE TRAFFIC CONTROL SIGNS –  
NUMBER DENOTES TYPE  
SEE TRAFFIC CONTROL SIGN LEGEND THIS SHEET
- ( ) SINGLE TRAFFIC CONTROL SIGN, NUMBER DENOTES TYPE
- TRAFFIC CONTROL SIGN – SINGLE POST MOUNTED

| TRAFFIC CONTROL SIGN LEGEND |   |                  |           |                       |                      |               |
|-----------------------------|---|------------------|-----------|-----------------------|----------------------|---------------|
| SIGN NUMBER                 | SIGN DESCRIPTION                        | SIGN DESIGNATION | SIGN SIZE | SIGN BACKGROUND COLOR | SIGN LETTERING COLOR | AMBER FLASHER |
| 1                           | ROAD CONSTRUCTION AHEAD                 | W20-1103(0)-48   | 48" X 48" | ORANGE                | BLACK                | 1             |
| 2                           | ADVANCE TURN ARROW (RIGHT)              | M5-1 R           | 21" X 15" | ORANGE                | BLACK                | 0             |
| 3                           | DIRECTIONAL ARROW (RIGHT)               | M6-1             | 21" X 15" | ORANGE                | BLACK                | 0             |
| 4                           | ADVANCE TURN ARROW (LEFT)               | M5-1 L           | 21" X 15" | ORANGE                | BLACK                | 0             |
| 5                           | DIRECTIONAL ARROW (LEFT)                | M6-1             | 21" X 15" | ORANGE                | BLACK                | 0             |
| 6                           | ROAD CONSTRUCTION AHEAD<br>1/8 MI AHEAD | W20-1103(0)-48   | 48" X 48" | ORANGE                | BLACK                | 1             |
| 7                           | ROAD CONSTRUCTION AHEAD<br>1 MI AHEAD   | W20-1103(0)-48   | 48" X 48" | ORANGE                | BLACK                | 1             |

**NOTES:**

1. SEE SPECIAL PROVISIONS FOR ADDITIONAL TRAFFIC CONTROL SIGNING DETAILS. ALL TRAFFIC CONTROL DEVICES NOT SHOWN ON THIS SHEET FOR CLARITY PURPOSES.
2. SEE ARTICLE 701.14 OF THE STANDARD SPECIFICATIONS – "ROAD CONSTRUCTION AHEAD" (W20-1103) SIGNS SHALL BE ERECTED ON ALL SIDE ROADS LOCATED WITHIN THE LIMITS OF THE MAINLINE "ROAD CONSTRUCTION AHEAD" SIGNS.
3. LONGITUDINAL DIMENSIONS SHOWN MAY BE ADJUSTED IN THE FIELD TO FIT EXISTING CONDITIONS.
4. THE FOLLOWING ILLINOIS DEPARTMENT OF TRANSPORTATION STANDARDS ARE APPLICABLE FOR THIS WORK:
  - 4.A. STANDARD 701001
  - 4.B. STANDARD 701006
  - 4.C. STANDARD 701011
  - 4.D. STANDARD 701201
  - 4.E. STANDARD 701301
  - 4.F. STANDARD 701306
  - 4.G. STANDARD 701901

