

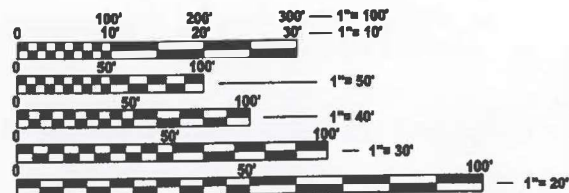
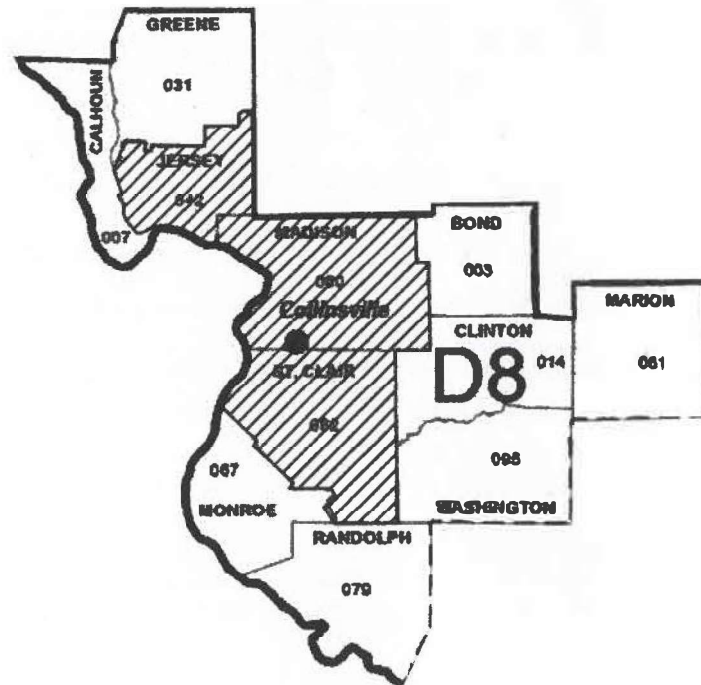
STATE OF ILLINOIS
DEPARTMENT OF TRANSPORTATION

F.A. RTE.	SECTION	COUNTY	TOTAL SHEETS	SHEET NO.
D 8 HT PVMNT MRK RPR 26-07	VARIOUS	VARIOUS	37	1
VARIOUS	ILLINOIS	CONTRACT NO. 46670		

FOR INDEX OF SHEETS, SEE SHEET NO. 2

PROPOSED
HIGHWAY PLANS

PAVEMENT MARKING REPLACEMENT
VARIOUS ROUTES
SECTION D 8 HT PVMNT MRK RPR 26-07
JERSEY, MADISON & St. Clair COUNTIES
JOB NUMBER: M-60-007-26



FULL SIZE PLANS HAVE BEEN PREPARED USING STANDARD ENGINEERING SCALES. REDUCED SIZED PLANS WILL NOT CONFORM TO STANDARD SCALES. IN MAKING MEASUREMENTS ON REDUCED PLANS, THE ABOVE SCALES MAY BE USED.

J.U.L.I.E.
JOINT UTILITY LOCATION INFORMATION FOR EXCAVATION
1-800-892-0123
OR 811

PROJECT ENGINEER RICHARD BARBEE
PROJECT MANAGER GILBERT GOODMAN

CONTRACT NO. 46670



Gilbert R. Goodman
EXPIRATION DATE: 11/30/26

STATE OF ILLINOIS
DEPARTMENT OF TRANSPORTATION

SUBMITTED Feb. 3 20 26
Zola Tracy ODM
REGIONAL ENGINEER

March 20 20 26
See Etc
ENGINEER OF DESIGN AND ENVIRONMENT

March 20 20 26
Grady
DIRECTOR OF HIGHWAYS PROJECT IMPLEMENTATION

PRINTED BY THE AUTHORITY
OF THE STATE OF ILLINOIS

INDEX OF SHEETS

1. COVER SHEET
2. GENERAL NOTES AND COMMITMENTS
3. UTILITY INFORMATION
4. SUMMARY OF QUANTITIES
- 5-6. SCHEDULE OF QUANTITIES
- 7-8. TRAFFIC CONTROL SCHEDULE
- 9-35. LOCATION MAPS
- 36-37. PAVEMENT MARKINGS DETAIL

HIGHWAY STANDARDS

000001-09
 701201-05
 701301-04
 701306-04
 701421-08
 701426-09
 701456-05
 701601-09
 701602-10
 701606-10
 701701-10
 701901-11
 780001-05

COMMITMENTS

NONE

GENERAL NOTES

1. SEE SHEET 3 FOR UTILITIES KNOWN TO HAVE FACILITIES WITHIN THE PROJECT AREA.
2. THE DEPARTMENT IS NOT A MEMBER OF JULIE AND DOES NOT LOCATE ITS OWN FACILITIES (SUCH AS UNDERGROUND CONDUIT AND/OR CABLE FOR TRAFFIC SIGNALS OR HIGHWAY LIGHTING). THE CONTRACTOR, AT HIS/HER OWN EXPENSE, MUST OBTAIN THE SERVICES OF A QUALIFIED ELECTRICAL CONTRACTOR TO LOCATE SUCH STATE-OWNED FACILITIES.
3. THE RESIDENT ENGINEER SHALL VERIFY THE EXISTENCE OF HIGHWAY LIGHTING, INTELLIGENT TRANSPORTATION SYSTEMS (I.T.S.) UTILITIES, AND/OR ELECTRICAL CABLES ASSOCIATED WITH TRAFFIC SIGNALS WITHIN THE PROJECT LIMITS. IF ANY OF THESE EXIST WITHIN THE PROJECT LIMITS, AND IF THESE ITEMS REQUIRE LOCATING, THE CONTRACTOR SHALL BE DIRECTED TO DO SO ACCORDING TO SECTION 803 OF THE STANDARD SPECIFICATIONS. THIS WORK SHALL BE PAID FOR ACCORDING TO ARTICLE 109.04 OF THE STANDARD SPECIFICATIONS.
4. NO SURVEY WAS PERFORMED FOR THIS PROJECT AND THE PLANS WERE CREATED USING MICROFILM AND FIELD MEASUREMENTS.
5. THE PROPOSED PAVEMENT MARKINGS SHALL MATCH THE LOCATIONS OF THE EXISTING PAVEMENT MARKINGS, AS DIRECTED BY THE ENGINEER. FOR BIKE TRAIL MARKINGS ALONG IL 100 IN JERSEY COUNTY, THE MARKINGS SHALL BE PLACED NO FURTHER APART THAN 1320'. FOR SHARED LANE MARKINGS ALONG IL 100 IN ALTON, THEY SHALL BE PLACED ON THE UPSTREAM SIDE OF EACH STREET INTERSECTION AND NO FURTHER APART THAN 250' IN AREAS OF NO STREET INTERSECTIONS. SHARED LANE BIKE MARKINGS SHALL BE PLACED IN THE CENTER OF THE OUTSIDE NORTHBOUND AND SOUTHBOUND LANES OF IL 100.
6. THE DEPARTMENT STRONGLY ENCOURAGES THE PRIME CONTRACTOR AND THEIR APPROVED SUB-CONTRACTORS TO HIRE MINORITY, WOMEN AND DISADVANTAGED INDIVIDUALS FROM ITS FEDERALLY FUNDED HIGHWAY CONSTRUCTION CAREERS TRAINING PROGRAM (HCCTP) TO HELP MEET WORKFORCE AND TRAINEE GOALS. THIS PROGRAM IS TRAINING MINORITIES, WOMEN AND DISADVANTAGED INDIVIDUALS IN HIGHWAY CONSTRUCTION-RELATED SKILLS, E.G., MATH FOR THE TRADES, JOB READINESS, TECHNICAL SKILLS COURSEWORK (CARPENTRY, CONCRETE FLATWORK, BLUEPRINT READING, SITE PLANS, SITE WORK, TOOLS USE, ETC.) AND OSHA 10 HOUR CERTIFICATION, TO PREPARE THEM FOR A CAREER IN THE HIGHWAY CONSTRUCTION TRADES. GRADUATES ARE WELL-TRAINED AND READY TO BECOME PRODUCTIVE ENTRY-LEVEL CONSTRUCTION WORKERS. CONTACT THE DISTRICT 8 EEO OFFICE AT 618-346-3360 AND/OR THE HCCTP COORDINATOR AT 618-874-6528 TO LEARN MORE ABOUT THE PROGRAM AND FOR ASSISTANCE IN MEETING WORKFORCE AND TRAINEE GOALS.
7. IL 100 BIKE TRAIL SHALL HAVE CONTINENTAL CROSSWALKS INSTALLED AT ALL PUBLIC SIDEROADS, FROM HAZELNUT LANE TO THE GRAFTON VISITOR'S CENTER, WHERE THE BIKE TRAIL CROSSES THE PUBLIC ROAD AWAY FROM THE EDGE OF PAVEMENT.

MODEL: Default
 FILE NAME: C:\OneDrive\Greene & Bradford Inc\G&B - Projects\2025\25101 - PTB 213-49 D8 Permit Prime\ WOC#1 GBI - Projects\10 Special Pavement Markings\25101 - Special Pavement Markings.dgn Index and General Notes.dgn

USER NAME = BenjaminBell	DESIGNED -	REVISED -	STATE OF ILLINOIS DEPARTMENT OF TRANSPORTATION	INDEX OF SHEETS, HIGHWAY STANDARDS GENERAL NOTES, AND COMMITMENTS	F.A. RTE.	SECTION	COUNTY	TOTAL SHEETS	SHEET NO.	
	DRAWN -	REVISED -			*	D 8 HT PVMNT MRK RPR 26-07	VARIOUS	37	2	
	CHECKED -	REVISED -			*VARIOUS	CONTRACT NO. 46670				
PLOT DATE = 10/16/2025	DATE -	REVISED -			SCALE:	SHEET 2	OF 37	SHEETS	STA.	TO STA.

MODEL: Default
 FILE NAME: C:\OneDrive\Greene & Bradford Inc\G&B - Projects\2025\25101 - PTB 213-49 D8 Permit-Prime - W0#1 - GBI - Projects\10 Special Pavement Markings\25101 - Special Pavement Markings.dgn\03 Utility Information.dgn

COMPANY	TYPE	AERIAL	BURIED
IL 100 FROM HAZELNUT/LOCKWOOD TO S GRAFTON CL - JERSEY CO			
AMEREN ILLINOIS	GAS & ELECTRIC	X	X
AT&T ILLINOIS	COMMUNICATIONS	X	X
ILLINOIS AMERICAN WATER	WATER		X
NUSTAR PIPELINE	PIPELINE		X
CITY OF GRAFTON	SEWER		X
GRAFTON TELEPHONE	COMMUNICATIONS	X	X
SPIRE STL	PIPELINE		X
NEW PIASA/CHAUTAUQUA	SEWER & WATER		X
US 67 FROM CLARK BRIDGE TO IL 143 - MADISON CO			
CITY OF ALTON	SEWER		X
AT&T ILLINOIS	COMMUNICATIONS	X	X
WOOD RIVER DRAINAGE & LEVEE DIST	SEWER		X
AMEREN ILLINOIS	GAS & ELECTRIC	X	X
CHARTER/SPECTRUM	COMMUNICATIONS	X	X
ILLINOIS AMERICAN WATER	WATER & SEWER		X
IL 100 FROM US 67/BROADWAY TO PIASA PARK - MADISON CO			
AMEREN ILLINOIS	GAS & ELECTRIC	X	X
CITY OF ALTON	SEWER		X
AT&T ILLINOIS	COMMUNICATIONS	X	X
CHARTER/SPECTRUM	COMMUNICATIONS	X	X
ILLINOIS AMERICAN WATER	SEWER & WATER		X
WOOD RIVER DRAINAGE & LEVEE DIST	SEWER		X
IL 159 FROM IL 143/IL 157 (MAIN ST) TO IL 159/TROY RD - MADISON CO			
AMEREN ILLINOIS	GAS & ELECTRIC	X	X
AT&T ILLINOIS	COMMUNICATIONS	X	X
I3 BROADBAND	COMMUNICATIONS	X	X
CHARTER/SPECTRUM	COMMUNICATIONS	X	X
CITY OF EDWARDSVILLE	SEWER & WATER		X
MARATHON PIPELINE LLC	PIPELINE		X
NORTHEAST CENTRAL PUBLIC WATER	WATER		X
SOUTH BOW CO	PIPELINE		X
MCI/VERIZON	COMMUNICATIONS	X	X
SEGRA	COMMUNICATIONS	X	X
STRATUS NETWORKS	COMMUNICATIONS	X	X
WINDSTREAM KDL	COMMUNICATIONS	X	X
ILLINOIS CONSOLIDATED TELEPHONE	COMMUNICATIONS	X	X
VILLAGE OF GLEN CARBON	SEWER & WATER		X
MADISON COMMUNICATIONS	COMMUNICATIONS	X	X
IL 111 FROM IL 140 TO AIRLINE DR - MADISON CO			
AMEREN ILLINOIS	GAS & ELECTRIC	X	X
AT&T ILLINOIS	COMMUNICATIONS	X	X
VILLAGE OF BETHALTO	SEWER & WATER		X
SEGRA	COMMUNICATIONS	X	X
CHARTER/SPECTRUM	COMMUNICATIONS	X	X
IL 157 AT I-270 SOUTH JUNCTION - MADISON CO			
AT&T ILLINOIS	COMMUNICATIONS	X	X
STATE OF IL-CMS	COMMUNICATIONS	X	X
VILLAGE OF GLEN CARBON	SEWER & WATER		X
SEGRA	COMMUNICATIONS	X	X
IL 159 AT MORO RD - MADISON CO			
AMEREN ILLINOIS	GAS & ELECTRIC	X	X
AT&T ILLINOIS	COMMUNICATIONS	X	X
FOSTERBURG WATER	WATER		X
HOLIDAY SHORES SANITARY DIST	SEWER & WATER		X
MADISON COMMUNICATIONS	COMMUNICATIONS	X	X
SOUTHWESTERN ELECTRIC COOP	ELECTRIC	X	X
BUCKEYE PARTNERS	PIPELINE		X

COMPANY	TYPE	AERIAL	BURIED
IL 157 FROM COLLINSVILLE RD TO HORSESHOE LAKE RD - MADISON CO			
AMEREN ILLINOIS	GAS & ELECTRIC	X	X
AT&T ILLINOIS	COMMUNICATIONS	X	X
CHARTER/SPECTRUM	COMMUNICATIONS	X	X
CITY OF COLLINSVILLE	SEWER & WATER		X
BLUEBIRD NETWORK	COMMUNICATIONS	X	X
IRHN	COMMUNICATIONS	X	X
WINDSTREAM KDL	COMMUNICATIONS	X	X
STATE OF IL-CMS	COMMUNICATIONS	X	X
SOUTHWESTERN ELECTRIC COOP	ELECTRIC	X	X
CLEARWAVE COMMUNICATIONS	COMMUNICATIONS	X	X
MCI/VERIZON	COMMUNICATIONS	X	X
CITY OF TROY	SEWER & WATER		X
IL 159 AT COUNTRY LANE - MADISON CO			
AMEREN ILLINOIS	GAS & ELECTRIC	X	X
AT&T ILLINOIS	COMMUNICATIONS	X	X
I3 BROADBAND	COMMUNICATIONS	X	X
CITY OF COLLINSVILLE	SEWER & WATER		X
CLEARWAVE COMMUNICATIONS	COMMUNICATIONS	X	X
MCI/VERIZON	COMMUNICATIONS	X	X
PARTA NETWORKS	COMMUNICATIONS	X	X
SEGRA	COMMUNICATIONS	X	X
AMEREN ILLINOIS	GAS		X
AT&T ILLINOIS	COMMUNICATIONS	X	X
BOND MADISON WATER CO	WATER		X
LEVEL 3/LUMEN	COMMUNICATIONS	X	X
MADISON TELEPHONE CO	COMMUNICATIONS	X	X
METRO COMMUNICATIONS CO	COMMUNICATIONS	X	X
BUCKEYE PARTNERS	PIPELINE		X
AMEREN ILLINOIS	GAS & ELECTRIC	X	X
CHARTER/SPECTRUM	CABLE TV	X	X
IL 159 AT CAMELOT - MADISON CO			
AMEREN ILLINOIS	GAS & ELECTRIC	X	X
AT&T ILLINOIS	COMMUNICATIONS	X	X
I3 BROADBAND	COMMUNICATIONS	X	X
CHARTER/SPECTRUM	COMMUNICATIONS	X	X
CITY OF COLLINSVILLE	SEWER & WATER		X
CLEARWAVE COMMUNICATIONS	COMMUNICATIONS	X	X
MCI/VERIZON	COMMUNICATIONS	X	X
PARTA NETWORKS	COMMUNICATIONS	X	X
SEGRA	COMMUNICATIONS	X	X
IL 157 AT ST CLAIR AVE EAST JUNCTION - ST. CLAIR CO			
AMEREN ILLINOIS	GAS & ELECTRIC	X	X
AT&T ILLINOIS	COMMUNICATIONS	X	X
I3 BROADBAND	COMMUNICATIONS	X	X
CITY OF EAST ST LOUIS	SEWER		X
CITY OF FAIRVIEW HEIGHTS	SEWER		X
ILLINOIS AMERICAN WATER	WATER		X
WINDSTREAM KDL	COMMUNICATIONS	X	X
METRO EAST SANITARY DIST	SEWER		X
IL 15/MISSOURI AVE FROM 9TH ST TO 26TH ST - ST. CLAIR CO			
AMEREN ILLINOIS	GAS & ELECTRIC	X	X
AT&T ILLINOIS	COMMUNICATIONS	X	X
CHARTER/SPECTRUM	COMMUNICATIONS	X	X
CLEARWAVE COMMUNICATIONS	COMMUNICATIONS	X	X
CITY OF EAST ST LOUIS	SEWER		X
ILLINOIS AMERICAN WATER	WATER		X
LEVEL 3/LUMEN	COMMUNICATIONS	X	X

COMPANY	TYPE	AERIAL	BURIED
IL 159 FROM METRO WAY TO FOUNTAINS PARKWAY - ST. CLAIR CO			
AMEREN ILLINOIS	GAS & ELECTRIC	X	X
AT&T ILLINOIS	COMMUNICATIONS	X	X
CHARTER/SPECTRUM	COMMUNICATIONS	X	X
CLEARWAVE COMMUNICATIONS	COMMUNICATIONS	X	X
ILLINOIS AMERICAN WATER	WATER		X
MCI/VERIZON	COMMUNICATIONS	X	X
SEGRA	COMMUNICATIONS	X	X
VILLAGE OF SWANSEA	SEWER		X
I3 BROADBAND	COMMUNICATIONS	X	X
FIDELITY COMMUNICATIONS SERVICES	COMMUNICATIONS	X	X
CASEVILLE TOWNSHIP SEWER SYSTEM	SEWER		X
CITY OF FAIRVIEW HEIGHTS	SEWER		X
ST CLAIR CO HWY DEPT	ELECTRIC	X	X
ST CLAIR CO HWY DEPT	SEWER		X
ST CLAIR TOWNSHIP	SEWER		X
CITY OF O'FALLON	ELECTRIC	X	X
CITY OF O'FALLON	SEWER & WATER		X
CITY OF O'FALLON	COMMUNICATIONS	X	X
EXTENET SYSTEMS LLC	COMMUNICATIONS	X	X
BUCKEYE PARTNERS	PIPELINE		X
LEVEL 3/LUMEN	COMMUNICATIONS	X	X
IL 161 AT NORTH BELT WEST - ST. CLAIR CO			
AMEREN ILLINOIS	GAS & ELECTRIC	X	X
AT&T ILLINOIS	COMMUNICATIONS	X	X
CITY OF BELLEVILLE	SEWER		X
CHARTER/SPECTRUM	COMMUNICATIONS	X	X
CLEARWATER COMMUNICATIONS	COMMUNICATIONS	X	X
FIDELITY COMMUNICATIONS SERVICES	COMMUNICATIONS	X	X
ILLINOIS AMERICAN WATER	WATER		X
MCI/VERIZON	COMMUNICATIONS	X	X
VILLAGE OF SWANSEA	SEWER		X
IL 4 AT I-64 EB, SOUTH JUNCTION - ST. CLAIR CO			
AMEREN ILLINOIS	GAS & ELECTRIC	X	X
CHARTER/SPECTRUM	COMMUNICATIONS	X	X
CLEARWAVE COMMUNICATIONS	COMMUNICATIONS	X	X
FRONTIER COMMUNICATIONS	COMMUNICATIONS	X	X
VILLAGE OF MASCOUTAH	ELECTRIC	X	X
VILLAGE OF MASCOUTAH	SEWER & WATER		X
MID AMERICA STL	ELECTRIC	X	X
MID AMERICA STL	COMMUNICATIONS	X	X
MID AMERICA STL	SEWER & WATER		X
VILLAGE OF NEW BADEN	SEWER & WATER		X
SEGRA	COMMUNICATIONS	X	X
SLM WATER COM	WATER	X	X
IL 4 AT IL 161 EAST JUNCTION - ST. CLAIR CO			
AMEREN ILLINOIS	GAS & ELECTRIC	X	X
AT&T ILLINOIS	COMMUNICATIONS	X	X
CHARTER/SPECTRUM	COMMUNICATIONS	X	X
CLEARWAVE COMMUNICATIONS	COMMUNICATIONS	X	X
FRONTIER COMMUNICATIONS	COMMUNICATIONS	X	X
WINDSTREAM KDL	COMMUNICATIONS	X	X
CITY OF MASCOUTAH	ELECTRIC	X	X
CITY OF MASCOUTAH	SEWER & WATER		X
METRO COMM	COMMUNICATIONS	X	X
SEGRA	COMMUNICATIONS	X	X
SLM WATER COM	WATER		X

USER NAME = BenjaminBell	DESIGNED -	REVISED -
	DRAWN -	REVISED -
	CHECKED -	REVISED -
PLOT DATE = 9/4/2025	DATE -	REVISED -

**STATE OF ILLINOIS
DEPARTMENT OF TRANSPORTATION**

UTILITY INFORMATION

SCALE: SHEET 3 OF 37 SHEETS STA. TO STA.

F.A. RTE.	SECTION	COUNTY	TOTAL SHEETS	SHEET NO.
*	D & HT PVMNT MRK RPR 26-07	VARIOUS	37	3
*VARIOUS		CONTRACT NO. 46670		
ILLINOIS FED. AID PROJECT				

MODEL: De edit
 FILE NAME: C:\OneDrive\Greene & Bradford\nci\ford - Projects\2025\25101 - PTB 21.3-49 D8 Permit Prime - Wof# 1 GBI - Projects\10 Special Pavement Markings\25101 - Special Pavement Markings\25101 - Summary of Quantities.dgn

SUMMARY OF QUANTITIES				CONSTRUCTION CODE		CONSTRUCTION CODE		CONSTRUCTION CODE	
				0021		0021		0021	
CODE NO.	PAY ITEM	UNIT	TOTAL QUANTITY	PAVEMENT MARKING		PAVEMENT MARKING		PAVEMENT MARKING	
				100% STATE		100% STATE		100% STATE	
				RURAL		URBAN		URBAN	
				JERSEY COUNTY		MADISON COUNTY		ST. CLAIR COUNTY	
78000100	THERMOPLASTIC PAVEMENT MARKING - LETTERS AND SYMBOLS	SQ FT	6939	1762	2530	2647			
78000400	THERMOPLASTIC PAVEMENT MARKING - LINE 6"	FOOT	6758	346	2394	4018			
78000650	THERMOPLASTIC PAVEMENT MARKING - LINE 24"	FOOT	7287	525	2712	4050			
78009000	MODIFIED URETHANE PAVEMENT MARKING - LETTERS AND SYMBOLS	SQ FT	1573		1573				
78009006	MODIFIED URETHANE PAVEMENT MARKING - LINE 6"	FOOT	282		282				
78009024	MODIFIED URETHANE PAVEMENT MARKING - LINE 24"	FOOT	342		342				
78300201	PAVEMENT MARKING REMOVAL - GRINDING	SQ FT	19324	1762	8792	8770			

USER NAME = BenjaminBell	DESIGNED -	REVISED -
	DRAWN -	REVISED -
	CHECKED -	REVISED -
PLOT DATE = 9/9/2025	DATE -	REVISED -

**STATE OF ILLINOIS
 DEPARTMENT OF TRANSPORTATION**

**SUMMARY OF
 QUANTITIES**

SCALE: SHEET 4 OF 37 SHEETS STA. TO STA.

F.A. RTE.	SECTION	COUNTY	TOTAL SHEETS	SHEET NO.
*	D 8 HT PVMNT MRK RPR 26-07	VARIOUS	37	4
*VARIOUS		CONTRACT NO. 46670		
ILLINOIS FED. AID PROJECT				

JERSEY COUNTY PAVEMENT MARKING SCHEDULE		TRAFFIC SIGNAL INTERSECTION ID #	THERMOPLASTIC PAVEMENT MARKING SOLID WHITE, 24" LINE FOOT		THERMOPLASTIC LETTERS AND SYMBOLS SQ. FT.		THERMOPLASTIC PAVEMENT MARKING SOLID WHITE, 6" LINE FOOT		MODIFIED URETHANE PAVEMENT MARKING SOLID WHITE, 24" LINE FOOT		MODIFIED URETHANE PAVEMENT MARKING LETTERS AND SYMBOLS SQ. FT.		MODIFIED URETHANE PAVEMENT MARKING SOLID WHITE, 6" LINE FOOT		PAVEMENT MARKING REMOVAL GRINDING SQ. FT.
INTERSECTION	LOCATION		STOP BAR	CROSSWALK	TURN ARROWS	BIKE TRAIL SYMBOL	CROSSWALK	STOP BAR	CROSSWALK	TURN ARROWS	BIKE TRAIL SYMBOL	CROSSWALK			
BIKE TRAIL	100 FROM HAZELNUT LANE TO SOUTH GRAFTON CITY LIMITS	N/A		525		1762.0	346								1762
SUB-TOTAL				525		1762.0	346								1762

MADISON COUNTY PAVEMENT MARKING SCHEDULE		TRAFFIC SIGNAL INTERSECTION ID #	THERMOPLASTIC PAVEMENT MARKING SOLID WHITE, 24" LINE FOOT		THERMOPLASTIC LETTERS AND SYMBOLS SQ. FT.		THERMOPLASTIC PAVEMENT MARKING SOLID WHITE, 6" LINE FOOT		MODIFIED URETHANE PAVEMENT MARKING SOLID WHITE, 24" LINE FOOT		MODIFIED URETHANE PAVEMENT MARKING LETTERS AND SYMBOLS SQ. FT.		MODIFIED URETHANE PAVEMENT MARKING SOLID WHITE, 6" LINE FOOT		PAVEMENT MARKING REMOVAL GRINDING SQ. FT.
INTERSECTION	LOCATION		STOP BAR	CROSSWALK	TURN ARROWS	BIKE TRAIL SYMBOL	CROSSWALK	STOP BAR	CROSSWALK	TURN ARROWS	BIKE TRAIL SYMBOL	CROSSWALK			
1	US 67 / IL 143 - NORTH END CLARK BRIDGE, ALTON	1445							174		187.0				361.2
2	IL 140 / IL 111 / BELLWOOD, BETHALTO	1980	132		109.2										241.2
3	IL 111 / AIRLINE DR., BETHALTO	1960	150		62.4										212.4
4	IL 157 / COLLINSVILLE RD., COLLINSVILLE	3500	72		140.4										212.4
5	IL 157 / W. MAIN ST. / STATE STREET, COLLINSVILLE	3520	96		46.8										142.8
6	IL 157 / BEVERLY LANE / HOME DEPOT ENT, COLLINSVILLE	3530	130		93.6		204								325.6
7	IL 157 / COLLINSVILLE CROSSING BLVD., COLLINSVILLE	3535	120		62.4		224								284.4
8	IL 157 / RAMADA BLVD. / 55 RAMP EB, S. JCT., COLLINSVILLE	3540	152		296.4										448.4
9	IL 157 / 55 WB RAMP, N. JCT., COLLINSVILLE	3560	99		93.6										192.6
10	IL 157 / EASTPORT PLAZA DR., COLLINSVILLE	3580	177		140.4										317.2
11	IL 157 / BELTLINE RD., COLLINSVILLE	3600	132		190.2										241.2
12	IL 157 / HORSESHOE LAKE RD., COLLINSVILLE	3620	134		78.0										212.2
13	IL 157 / I-270 EB RAMP, GLEN CARBON	3640	114		218.4										332.4
14	IL 159 / MORO RD., MADISON COUNTY	3145	152		93.6										245.6
15	IL 159 / IL 157 / IL 143 - MAIN STREET, EDWARDSVILLE	3740	120		218.4		564								625.4
16	IL 159 / SCHWARZ ST., EDWARDSVILLE	4370	112		62.4		654								501.4
17	IL 159 AT EDWARDSVILLE CROSSING / DIERBERGS, EDWARDSVILLE	4363	90		62.4		188								340.4
18	IL 159 / GOVERNORS PARKWAY, EDWARDSVILLE-GLEN CARBON	4361	140		140.4		200								480.4
19	IL 159 / CENTER GROVE RD., GLEN CARBON	4364	192		93.6										285.6
20	IL 159 / TROY RD. / ILLINI DR. / LOWE'S, GLEN CARBON	4362	176		202.8		224								490.8
21	IL 159 / E COUNTRY LANE, COLLINSVILLE	4290	102		62.4										184.4
22	IL 159 / CAMELOT DR., COLLINSVILLE	4285	120		62.4		136								250.4
23	IL 100 / US 67 / BROADWAY TO PIASA PARK, ALTON	N/A							168		286.0	445	282		1207.5
24	US 67 ON CLARK BRIDGE, BIKE LETTERS AND SYMBOLS, ALTON	N/A									656				655.6
SUB-TOTAL			2712		2530		2394		342		473.0	1100	282		8791.5

MODEL: Default
 FILE NAME: C:\OneDrive\Greene & Bradford Inc\G&B - Projects\2025\25101 - PTB 213-49 D8 Permit-PrmeL_WOC#1_GBI - Project\10_Special Pavement Markings\05 Schedule of Quantities.dgn

USER NAME = BenjaminBell	DESIGNED -	REVISED -
	DRAWN -	REVISED -
	CHECKED -	REVISED -
PLOT DATE = 9/9/2025	DATE -	REVISED -

**STATE OF ILLINOIS
DEPARTMENT OF TRANSPORTATION**

**SCHEDULE
OF QUANTITIES**

SCALE: SHEET 5 OF 37 SHEETS STA. TO STA.

F.A. RTE.	SECTION	COUNTY	TOTAL SHEETS	SHEET NO.
*	D 8 HT PVMNT MRK RPR 26-07	VARIOUS	37	5
* VARIOUS		CONTRACT NO. 46670		
		ILLINOIS	FED. AID PROJECT	

MODEL: Default
 FILE NAME: C:\OneDrive\Greene & Bradford Inc\G&B - Projects\2025\25101 - PTB 213-49 D8 Permit-Prmeal_WOC#1.GBI - Projects\10 Special Pavement Markings\106 Schedule of Quantities 2.dgn

ST. CLAIR COUNTY PAVEMENT MARKING SCHEDULE		TRAFFIC SIGNAL INTERSECTION ID #	THERMOPLASTIC PAVEMENT MARKING SOLID WHITE, 24" LINE FOOT		THERMOPLASTIC LETTERS AND SYMBOLS SQ. FT.		THERMOPLASTIC PAVEMENT MARKING SOLID WHITE, 6" LINE FOOT		MODIFIED URETHANE PAVEMENT MARKING SOLID WHITE, 24" LINE FOOT		MODIFIED URETHANE PAVEMENT MARKING LETTERS AND SYMBOLS SQ. FT.		MODIFIED URETHANE PAVEMENT MARKING SOLID WHITE, 6" LINE FOOT		PAVEMENT MARKING REMOVAL GRINDING SQ. FT.
INTERSECTION	LOCATION		STOP BAR	CROSSWALK	TURN ARROWS	BIKE TRAIL SYMBOL	CROSSWALK	STOP BAR	CROSSWALK	TURN ARROWS	BIKE TRAIL SYMBOL	CROSSWALK			
25	IL 159 / S. PARKWAY DR. / METRO DR., SWANSEA	3990	124	681	93.6										898.6
26	IL 159 / FULLERTON, SWANSEA	4000	160		62.4		224								334.4
27	IL 159 / ROSEWOOD, SWANSEA	4005	163		62.4										225.4
28	IL 159 / HUNTWOOD, SWANSEA	4007	102		62.4		144								236.4
29	IL 159 / GREENHAVEN, SWANSEA	4008	132		62.4										196.4
30	IL 159 / FRANK SCOTT PKWY, SWANSEA	4010	180		140.4										320.4
31	IL 159 / CHAUTEAU, FAIRVIEW HEIGHTS	4015	132		62.4		160								274.4
32	IL 159 / LONGACRE / ASHLAND, FAIRVIEW HEIGHTS	4020	168		93.6		658								590.6
33	IL 159 / LINCOLN PLACE, FAIRVIEW HEIGHTS	4030	132		62.4		340								255.4
34	IL 159 / LINCOLN TRAIL, FAIRVIEW HEIGHTS	4040	210		358.8		416								776.8
35	IL 159 / ST. CLAIR SQUARE, S. ENTRANCE, FAIRVIEW HEIGHTS	4060	144		62.4		112								262.4
36	IL 159 / MARKETPLACE / ST. CLAIR SQUARE, N. ENTRANCE, FAIRVIEW HEIGHTS	4080	192		156.0										348.0
37	IL 159 / I-64 EB RAMP, S. JCT, FAIRVIEW HEIGHTS	4100	120		218.4										338.4
38	IL 159 / I-64 WB RAMP, N. JCT, FAIRVIEW HEIGHTS	4120	108		171.6										279.6
39	IL 159 / LUDWIG / SALEM, FAIRVIEW HEIGHTS	4140	162		125.0										287.0
40	IL 159 / FOUNTAINS PKWY., FAIRVIEW HEIGHTS	4150	168		93.6										261.6
41	IL 161 / NORTH BELT WEST, SWANSEA	4620	198		93.6										291.6
42	IL 4 / IL 161, E. JCT, MASCOUTAH	650	64		218.4										386.4
43	IL 4 / I-64 EB RAMP, S. JCT, MASCOUTAH	652	66		109.2										175.2
44	IL 157 / ST. CLAIR AVE., E. JCT, FAIRVIEW HEIGHTS	3340	80		140.4		134								354.4
45	IL 15 / MISSOURI AVE./9TH ST., EAST ST. LOUIS	740	96		41.6		352								313.6
46	IL 15 / MISSOURI AVE. / 10TH ST., EAST ST. LOUIS	780	84		31.2		432								331.2
47	IL 15 / MISSOURI AVE. / 13TH ST., EAST ST. LOUIS	840	72				372								258.0
48	IL 15 / MISSOURI AVE. / 15TH ST., EAST ST. LOUIS	1040	72				386								265.0
49	IL 15 / MISSOURI AVE. / 18TH ST., EAST ST. LOUIS	1100	120		62.4		288								326.4
50	IL 15 / MISSOURI AVE. / 26TH ST., EAST ST. LOUIS	1220	120		62.4										182.4
SUB-TOTAL			3369	681	2647.0	0.0	4018								8770.0

USER NAME = BenjaminBell	DESIGNED -	REVISED -
	DRAWN -	REVISED -
	CHECKED -	REVISED -
PLOT DATE = 9/30/2025	DATE -	REVISED -

**STATE OF ILLINOIS
DEPARTMENT OF TRANSPORTATION**

**SCHEDULE
OF QUANTITIES**

SCALE: SHEET 6 OF 37 SHEETS STA. TO STA.

F.A. RTE.	SECTION	COUNTY	TOTAL SHEETS	SHEET NO.
*	D 8 HT PVMNT MRK RPR 26-07	VARIOUS	37	6
* VARIOUS		CONTRACT NO. 46670		
		ILLINOIS	FED. AID PROJECT	

JERSEY COUNTY TRAFFIC CONTROL SCHEDULE		TRAFFIC SIGNAL INTERSECTION ID #	701201 L SUM	701301	701306 L SUM	701421 L SUM	701426	701456 L SUM	701601 EACH	701602 EACH	701606 EACH	701701 EACH	701901
BIKE TRAIL	IL 100 FROM HAZELNUT LANE TO SOUTH GRAFTON CITY LIMITS	N/A				X	X						X
SUB-TOTAL						1	1						1

MADISON COUNTY TRAFFIC CONTROL SCHEDULE		TRAFFIC SIGNAL INTERSECTION ID #	701201 L SUM	701301	701306 L SUM	701421 L SUM	701426	701456 L SUM	701601 EACH	701602 EACH	701606 EACH	701701 EACH	701901
1	US 67 / IL 143 - NORTH END CLARK BRIDGE, ALTON	1445				X			X			X	X
2	IL 140 / IL 111 / BELLWOOD, BETHALTO	1980							X			X	X
3	IL 111 / AIRLINE DR., BETHALTO	1960								X		X	X
4	IL 157 / COLLINSVILLE RD., COLLINSVILLE	3500		X							X	X	X
5	IL 157 / W. MAIN ST. / STATE STREET, COLLINSVILLE	3520								X		X	X
6	IL 157 / BEVERLY LANE / HOME DEPOT ENT., COLLINSVILLE	3530								X		X	X
7	IL 157 / COLLINSVILLE CROSSING BLVD., COLLINSVILLE	3535								X		X	X
8	IL 157 / RAMADA BLVD. / 55 RAMP EB, S. JCT., COLLINSVILLE	3540						X		X		X	X
9	IL 157 / 55 WB RAMP, N. JCT., COLLINSVILLE	3560						X		X		X	X
10	IL 157 / EASTPORT PLAZA DR., COLLINSVILLE	3580								X		X	X
11	IL 157 / BELTLINE RD., COLLINSVILLE	3600						X		X		X	X
12	IL 157 / HORSESHOE LAKE RD., COLLINSVILLE	3620								X		X	X
13	IL 157 / I-270 EB RAMP, GLEN CARBON	3640						X	X			X	X
14	IL 159 / MORO RD., MADISON COUNTY	3145			X							X	X
15	IL 159 / IL 157 / IL 143-MAIN STREET, EDWARDSVILLE	3740							X			X	X
16	IL 159 / SCHWARZ ST., EDWARDSVILLE	4370								X		X	X
17	IL 159 / EDWARDSVILLE CROSSING/DIERBERGS, EDWARDSVILLE	4363							X			X	X
18	IL 159 / GOVERNORS PARKWAY, EDWARDSVILLE-GLEN CARBON	4361							X			X	X
19	IL 159 / CENTER GROVE RD., GLEN CARBON	4364								X		X	X
20	IL 159 / TROY RD. / ILLINI DR. / LOWE'S, GLEN CARBON	4362								X		X	X
21	IL 159 / E COUNTRY LANE, COLLINSVILLE	4290								X		X	X
22	IL 159 / CAMELOT DR., COLLINSVILLE	4285								X		X	X
23	IL 100 / US 67 / BROADWAY TO PIASA PARK, ALTON	N/A				X						X	X
24	US 67 ON CLARK BRIDGE, BIKE LETTERS AND SYMBOLS, ALTON	N/A				X						X	X
SUB-TOTAL				1	1	3		4	6	14	1	23	23

MODEL: Default
 FILE NAME: C:\OneDrive\Greene & Bradford Inc\G&B - Projects\2025\25101 - PTB 213-49 D8 Permit-Prime\WOC#1.GBI - Project\10 Special Pavement Markings\25101 - Special Pavement Markings\07 Traffic Control Schedule.dgn

USER NAME = BenjaminBell	DESIGNED -	REVISED -
	DRAWN -	REVISED -
	CHECKED -	REVISED -
PLOT DATE = 9/9/2025	DATE -	REVISED -

**STATE OF ILLINOIS
DEPARTMENT OF TRANSPORTATION**

**SCHEDULE
OF QUANTITIES**

SCALE: SHEET 7 OF 36 SHEETS STA. TO STA.

F.A. RTE.	SECTION	COUNTY	TOTAL SHEETS	SHEET NO.
*	D 8 HT PVMNT MRK RPR 26-07	VARIOUS	36	7
* VARIOUS		CONTRACT NO. 46670		
		ILLINOIS	FED. AID PROJECT	

MODEL: Default
 FILE NAME: C:\OneDrive\Greene & Bradford Inc\G&B - Projects\2025\25101 - PTB 213-49 D8 Permit-Prma\ - WOC#1 GBI - Projects\10 Special Pavement Markings\dgn\08 Traffic Control Schedule 2.dgn

ST. CLAIR COUNTY TRAFFIC CONTROL SCHEDULE		TRAFFIC SIGNAL INTERSECTION	701201	701301	701306	701421	701426	701456	701601	701602	701606	701701	701901
INTERSECTION	LOCATION	ID #	L SUM		L SUM	L SUM		L SUM	EACH	EACH	EACH	EACH	
25	IL 159 / S. PARKWAY DR. / METRO DR. / SWANSEA	3990								X		X	X
26	IL 159 / FULLERTON, SWANSEA	4000								X		X	X
27	IL 159 / ROSEWOOD, SWANSEA	4005								X		X	X
28	IL 159 / HUNTWOOD, SWANSEA	4007								X		X	X
29	IL 159 / GREENHAVEN, SWANSEA	4008								X		X	X
30	IL 159 / FRANK SCOTT PKWY., SWANSEA	4010								X		X	X
31	IL 159 / CHAUTEAU, FAIRVIEW HEIGHTS	4015								X		X	X
32	IL 159 / LONGACRE / ASHLAND, FAIRVIEW HEIGHTS	4020								X		X	X
33	IL 159 / LINCOLN PLACE, FAIRVIEW HEIGHTS	4030								X		X	X
34	IL 159 / LINCOLN TRAIL, FAIRVIEW HEIGHTS	4040								X		X	X
35	IL 159 / ST. CLAIR SQUARE, S. ENTRANCE, FAIRVIEW HEIGHTS	4060								X		X	X
36	IL 159 / MARKETPLACE / ST. CLAIR SQUARE, N. ENTRANCE, FAIRVIEW HEIGHTS	4080								X		X	X
37	IL 159 / I-64 EB RAMPS, S. JCT., FAIRVIEW HEIGHTS	4100					X	X		X		X	X
38	IL 159 / I-64 WB RAMPS, N. JCT., FAIRVIEW HEIGHTS	4120					X	X		X		X	X
39	IL 159 / LUDWIG / SALEM, FAIRVIEW HEIGHTS	4140					X			X		X	X
40	IL 159 / FOUNTAINS PKWY., FAIRVIEW HEIGHTS	4150					X			X		X	X
41	IL 161 / NORTH BELT WEST, SWANSEA	4620							X			X	X
42	IL 4 / IL 161, E. JCT., MASCOUTAH	650	X		X							X	X
43	IL 4 / I-64 EB RAMPS, S. JCT., MASCOUTAH	652						X	X			X	X
44	IL 157 / ST. CLAIR AVE., E. JCT., FAIRVIEW HEIGHTS	3340						X		X		X	X
45	IL 15 / MISSOURI AVE. / 9TH ST., EAST ST. LOUIS	740							X			X	X
46	IL 15 / MISSOURI AVE. / 10TH ST., EAST ST. LOUIS	780							X			X	X
47	IL 15 / MISSOURI AVE. / 13TH ST., EAST ST. LOUIS	840							X			X	X
48	IL 15 / MISSOURI AVE. / 15TH ST., EAST ST. LOUIS	1040							X			X	X
49	IL 15 / MISSOURI AVE. / 18TH ST., EAST ST. LOUIS	1100							X			X	X
50	IL 15 / MISSOURI AVE. / 26TH ST., EAST ST. LOUIS	1220							X			X	X
SUB-TOTAL			1		1		4	4	8	17		26	26
TOTAL			1	1	2	4	5	8	14	31	1	49	50

USER NAME = BenjaminBell	DESIGNED -	REVISED -
	DRAWN -	REVISED -
	CHECKED -	REVISED -
PLOT DATE = 9/9/2025	DATE -	REVISED -

**STATE OF ILLINOIS
 DEPARTMENT OF TRANSPORTATION**

**SCHEDULE
 OF QUANTITIES**

SCALE: SHEET 8 OF 36 SHEETS STA. TO STA.

F.A. RTE.	SECTION	COUNTY	TOTAL SHEETS	SHEET NO.
*	D 8 HT PVMNT MRK RPR 26-07	VARIOUS	36	8
* VARIOUS			CONTRACT NO. 46670	
		ILLINOIS	FED. AID PROJECT	

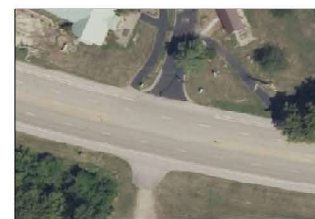
MODEL: Sheet C:\OneDrive\Greene & Bradford Inc\G&B - Projects\2025\25101 - P1B_213-49 D8 Permit Prime\ W04#1 GBI - Project\10 Special Pavement Markings\25101 - Special Pavement Markings\25101 - IL 100 Hazelnut Ln to Grafton.dgn



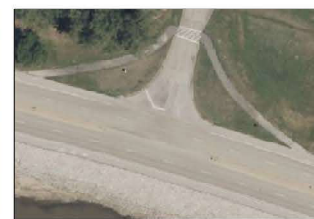
IL 100
ALTON IL TO GRAFTON IL



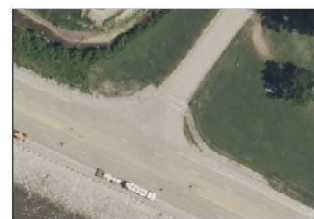
BEGIN BIKE TRAIL PAVEMENT MARKINGS
AT HAZELNUT LANE



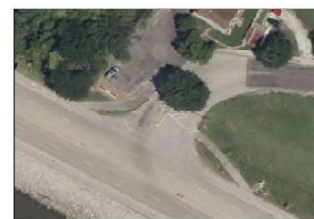
IL 100 @ GRAFTON VISITOR'S
CENTER & MUSEUM
LADDER CROSSWALK



IL 100 @ PALISADES
PARKWAY
LADDER CROSSWALK



IL 100 @ ALTON
AVENUE
LADDER CROSSWALK



IL 100 @ MISSISSIPPI
STREET
LADDER CROSSWALK



IL 100 @ LOCKHAVEN
ROAD
LADDER CROSSWALK



IL 100 @ HAZELNUT
LANE
LADDER CROSSWALK

NOTE: SEE PAGE 37 FOR DETAILS OF LADDER CROSSWALK



USER NAME = BenjaminBell	DESIGNED -	REVISED -
	DRAWN -	REVISED -
	CHECKED -	REVISED -
PLOT DATE = 9/9/2025	DATE -	REVISED -

STATE OF ILLINOIS
DEPARTMENT OF TRANSPORTATION

LOCATION MAPS
MADISON COUNTY

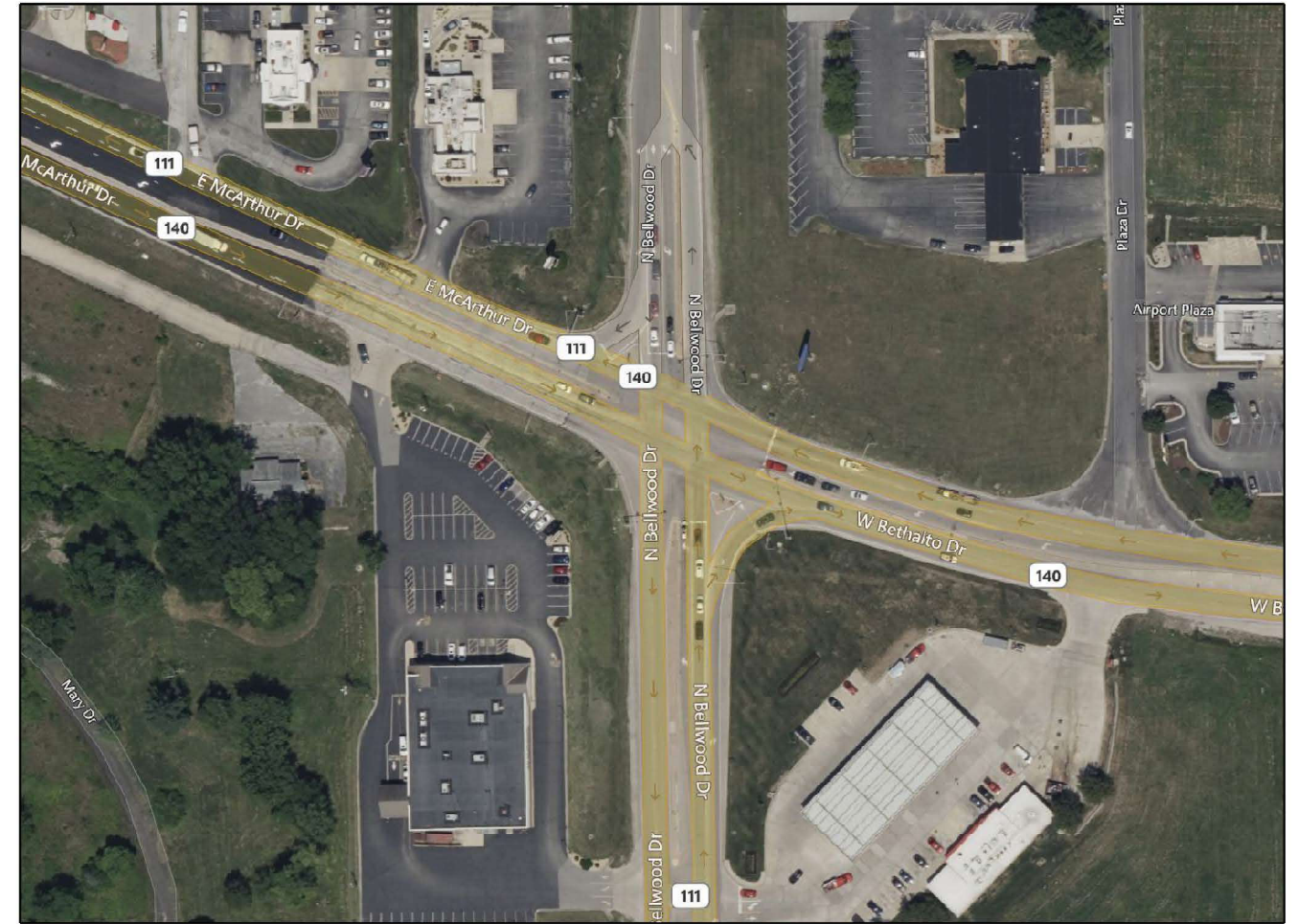
SCALE: SHEET 9 OF 37 SHEETS STA. TO STA.

F.A. RTE.	SECTION	COUNTY	TOTAL SHEETS	SHEET NO.
*	D 8 HT PVMNT MRK RPR 26-07	MADISON	37	9
*VARIOUS			CONTRACT NO. 46670	
		ILLINOIS	FED. AID PROJECT	

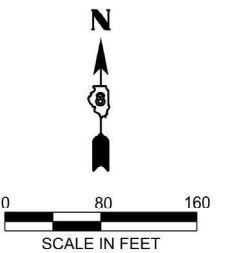
MODEL: Sheet
 FILE NAME: C:\OneDrive\Greene & Bradford Inc\G&B - Projects\2025\25101 - PTB 213-49 D8 Permit Prime\ W0#1 GBI - Project\10 Special Pavement Markings\25101 - Special Pavement Markings\10-1-2 US 64 - IL -43 & IL 140 - IL 111.cpn



LOCATION # 1
 US 67 @ IL 143 - ALTON
 INTERSECTION ID # 1445



LOCATION # 2
 IL 140 @ IL 111 - BETHALTO
 INTERSECTION ID # 1980



USER NAME = BenjaminBell	DESIGNED -	REVISED -
	DRAWN -	REVISED -
	CHECKED -	REVISED -
PLOT DATE = 9/4/2025	DATE -	REVISED -

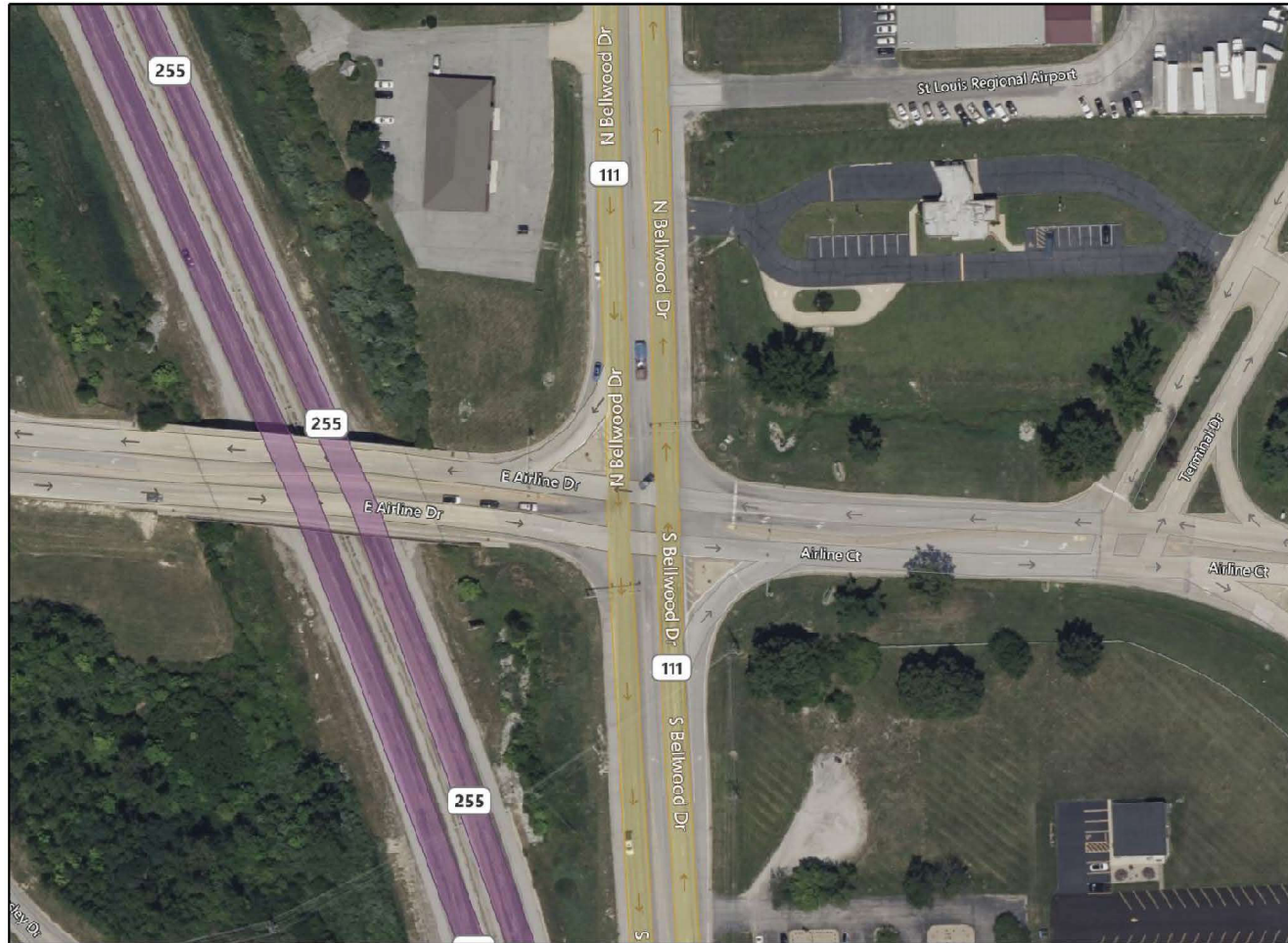
**STATE OF ILLINOIS
 DEPARTMENT OF TRANSPORTATION**

**LOCATION MAPS
 MADISON COUNTY**

SCALE: SHEET 10 OF 37 SHEETS STA. TO STA.

F.A. RTE.	SECTION	COUNTY	TOTAL SHEETS	SHEET NO.
*	D 8 HT PVMNT MRK RPR 26-07	MADISON	37	10
*VARIOUS			CONTRACT NO. 46670	
		ILLINOIS	FED. AID PROJECT	

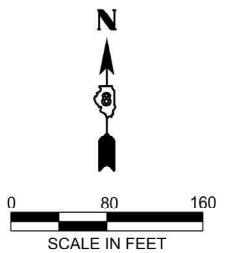
MODEL: Sheet
 FILE NAME: C:\OneDrive\Greene & Bradford Inc\G&B - Projects\2025\25101 - PTB 213-49 D8 Permit Prime\ W0# 1 GBI - Project\10 Special Pavement Markings\25101-3-4_IL_111_Airline & IL 157_Collinsville Rd.dgn



LOCATION # 3
 IL 111 @ AIRLINE DR. - BETHALTO
 INTERSECTION ID # 1960



LOCATION # 4
 IL 157 @ COLLINSVILLE RD. - COLLINSVILLE
 INTERSECTION ID # 3500



USER NAME = BenjaminBell	DESIGNED -	REVISED -
	DRAWN -	REVISED -
	CHECKED -	REVISED -
PLOT DATE = 9/4/2025	DATE -	REVISED -

**STATE OF ILLINOIS
 DEPARTMENT OF TRANSPORTATION**

SCALE: SHEET 11 OF 37 SHEETS STA. TO STA.

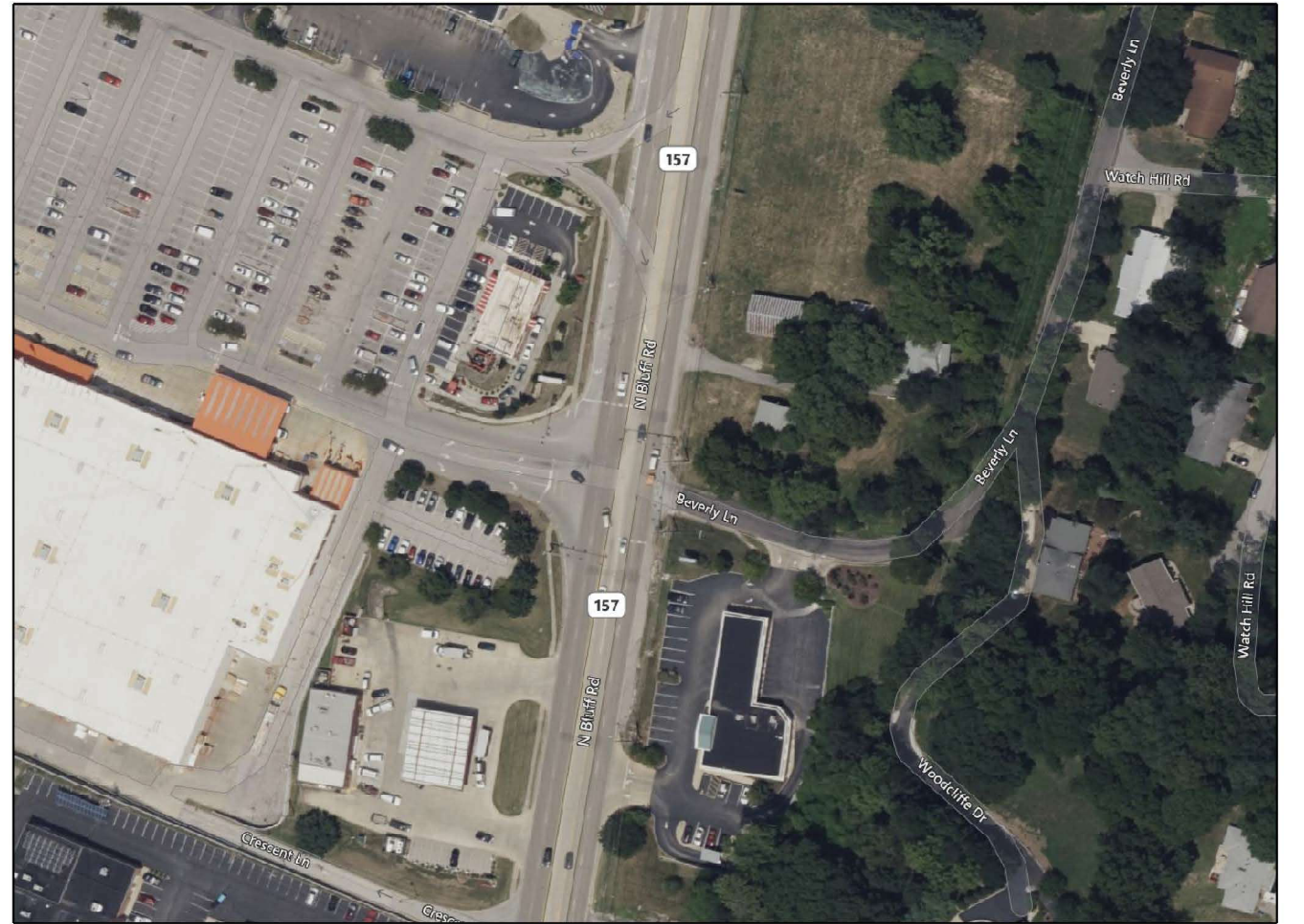
**LOCATION MAPS
 MADISON COUNTY**

F.A. RTE.	SECTION	COUNTY	TOTAL SHEETS	SHEET NO.
*	D 8 HT PVMNT MRK RPR 26-07	MADISON	37	11
*VARIOUS		CONTRACT NO. 46670		
		ILLINOIS	FED. AID PROJECT	

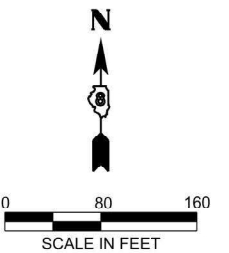
MODEL: Sheet
 FILE NAME: C:\OneDrive\Greene & Bradford Inc\G&B - Projects\2025\25101 - PTB 213-49 D8 Permit Prime\ W04#1 GBI - Project\10 Special Pavement Markings\25101 - Special Pavement Markings\25101-5-6 08 L 157 W Main & IL 157 Beverly Lane.dgn



LOCATION # 5
 IL 157 @ W. MAIN ST. - COLLINSVILLE
 INTERSECTION ID # 3520



LOCATION # 6
 IL 157 @ BEVERLY LANE - COLLINSVILLE
 INTERSECTION ID # 3530



USER NAME = BenjaminBell	DESIGNED -	REVISED -
	DRAWN -	REVISED -
	CHECKED -	REVISED -
PLOT DATE = 9/4/2025	DATE -	REVISED -

**STATE OF ILLINOIS
 DEPARTMENT OF TRANSPORTATION**

**LOCATION MAPS
 MADISON COUNTY**

SCALE: SHEET 12 OF 37 SHEETS STA. TO STA.

F.A. RTE.	SECTION	COUNTY	TOTAL SHEETS	SHEET NO.
IL 157	D 8 HT PVMNT MRK RPR 26-07	MADISON	37	12
CONTRACT NO. 46670				
		ILLINOIS	FED. AID PROJECT	

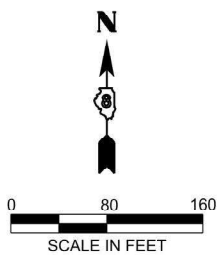
MODEL: Sheet
 FILE NAME: C:\OneDrive\Greene & Bradford Inc\G&B - Projects\2025\25101 - PTB 213-49 D8 Permit Prime\ W04 1 GBI - Project\10 Special Pavement Markings\25101-13 7-8 IL 157 Collinsville Crossing & IL 157 Ramada.dgn



LOCATION # 7
 IL 157 @ COLLINSVILLE CROSSING BLVD - COLLINSVILLE
 INTERSECTION ID # 3535



LOCATION # 8
 IL 157 @ RAMADA BLVD - COLLINSVILLE
 INTERSECTION ID # 3540



USER NAME = BenjaminBell	DESIGNED -	REVISED -
	DRAWN -	REVISED -
	CHECKED -	REVISED -
PLOT DATE = 9/4/2025	DATE -	REVISED -

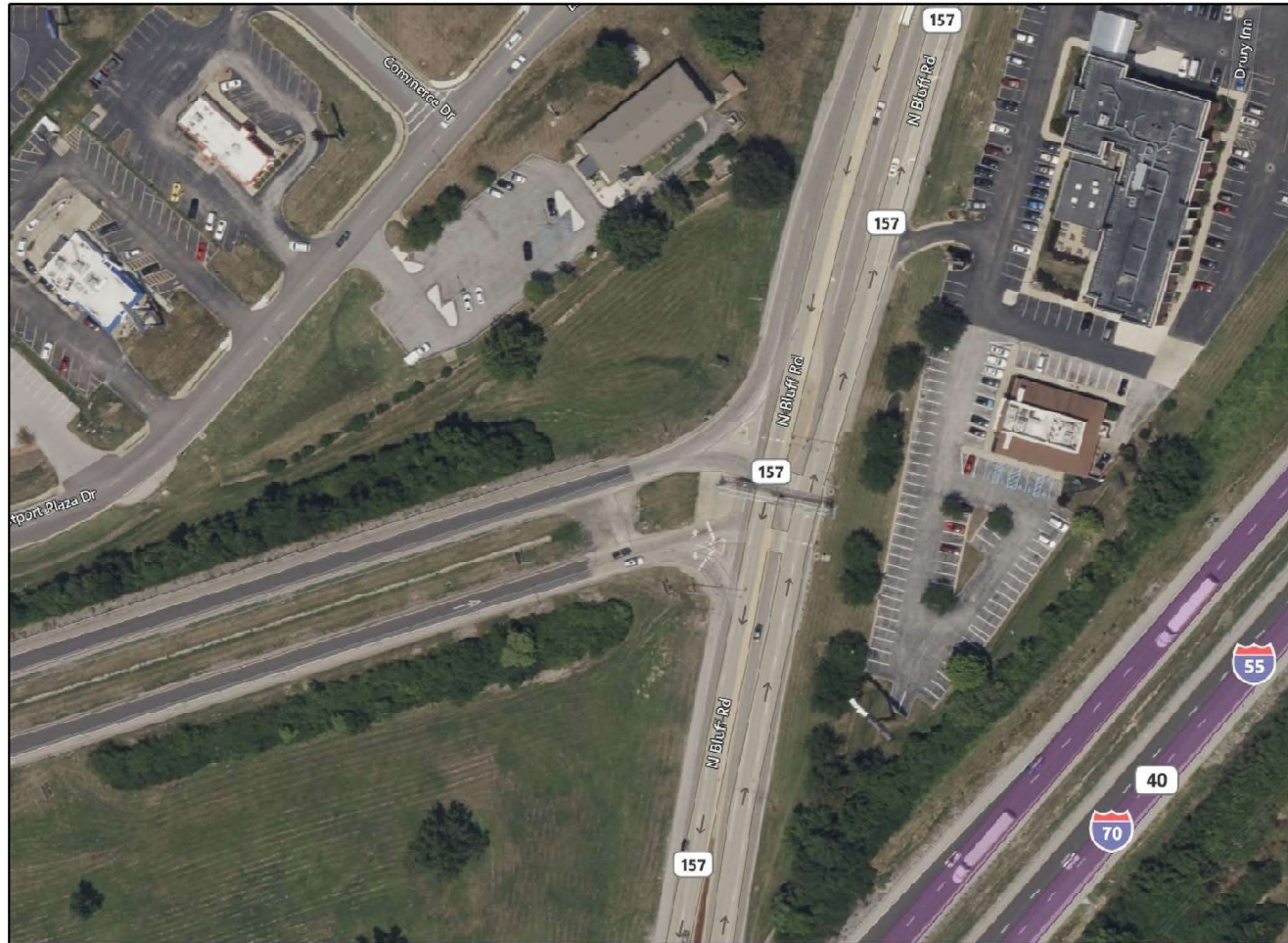
**STATE OF ILLINOIS
 DEPARTMENT OF TRANSPORTATION**

**LOCATION MAPS
 MADISON COUNTY**

SCALE: SHEET 13 OF 37 SHEETS STA. TO STA.

F.A. RTE.	SECTION	COUNTY	TOTAL SHEETS	SHEET NO.
IL 157	D 8 HT PVMNT MRK RPR 26-07	MADISON	37	13
CONTRACT NO. 46670				
ILLINOIS FED. AID PROJECT				

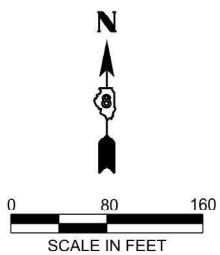
MODEL: Sheet
 FILE NAME: C:\OneDrive\Greene & Bradford Inc\G&B - Projects\2025\25101 - PTB 213-49 D8 Permit\Frma\ W04#1 GBI - Project\10 Special Pavement Markings\25101-14-9-10 IL 157_55 WB Ramp & IL 157 Eastport Plaza.cgn



LOCATION # 9
 IL 157 & I-55 WB RAMP - COLLINSVILLE
 INTERSECTION ID # 3560



LOCATION # 10
 IL 157 @ EASTPORT PLAZA DR. - COLLINSVILLE
 INTERSECTION ID # 3580



USER NAME = BenjaminBell	DESIGNED -	REVISED -
	DRAWN -	REVISED -
	CHECKED -	REVISED -
PLOT DATE = 9/4/2025	DATE -	REVISED -

**STATE OF ILLINOIS
 DEPARTMENT OF TRANSPORTATION**

**LOCATION MAPS
 MADISON COUNTY**

SCALE: SHEET 14 OF 37 SHEETS STA. TO STA.

F.A. RTE.	SECTION	COUNTY	TOTAL SHEETS	SHEET NO.
IL 157	D 8 HT PVMNT MRK RPR 26-07	MADISON	37	14
CONTRACT NO. 46670				
		ILLINOIS	FED. AID PROJECT	

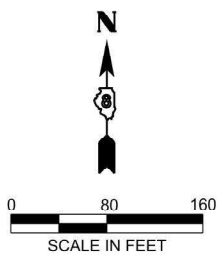
MODEL: Sheet
 FILE NAME: C:\OneDrive\Greene & Bradford Inc\G&B - Projects\2025\25101 - PTB 213-49 D8 Permit Prime\ W04#1 GBI - Project\10 Special Pavement Markings\25101-11-12 IL 157 Beltline Rd & IL 157 Horseshoe Lake Rd.dgn



LOCATION # 11
 IL 157 @ BELT LINE RD. - COLLINSVILLE
 INTERSECTION ID # 3600



LOCATION # 12
 IL 157 @ HORSESHOE LAKE RD. - COLLINSVILLE
 INTERSECTION ID # 3620



USER NAME = BenjaminBell	DESIGNED -	REVISED -
	DRAWN -	REVISED -
	CHECKED -	REVISED -
PLOT DATE = 9/4/2025	DATE -	REVISED -

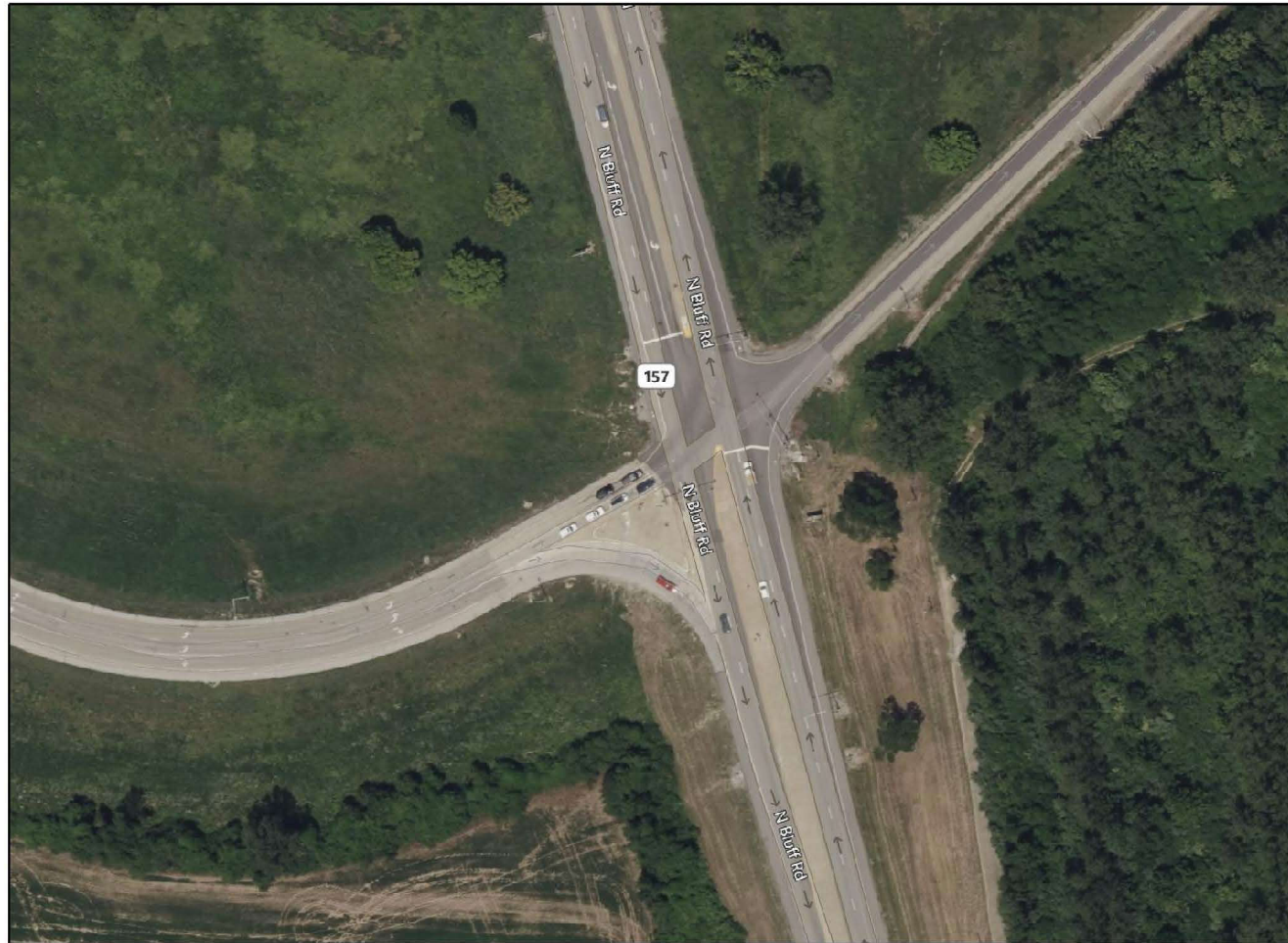
**STATE OF ILLINOIS
 DEPARTMENT OF TRANSPORTATION**

**LOCATION MAPS
 MADISON COUNTY**

SCALE: SHEET 15 OF 37 SHEETS STA. TO STA.

F.A. RTE.	SECTION	COUNTY	TOTAL SHEETS	SHEET NO.
IL 157	D 8 HT PVMNT MRK RPR 26-07	MADISON	37	15
CONTRACT NO. 46670				
ILLINOIS FED. AID PROJECT				

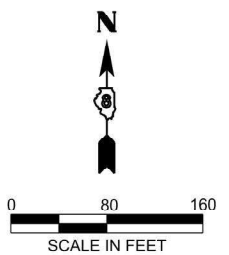
MODEL: Sheet
 FILE NAME: C:\OneDrive\Greene & Bradford Inc\G&B - Projects\2025\25101 - PTB 213-49 D8 Permit Prime\ WOC# 1 GBI - Project\10 Special Pavement Markings\25101 - Special Pavement Markings\25101-13-14-IL-157-I-270 EB RAMP & IL 19 MORO RD.dgn



LOCATION # 13
 IL 157 @ I-270 EB RAMP - GLEN CARBON
 INTERSECTION ID # 3640



LOCATION # 14
 IL 159 @ MORO RD. - MADISON COUNTY
 INTERSECTION ID # 3145



USER NAME = BenjaminBell	DESIGNED -	REVISED -
	DRAWN -	REVISED -
	CHECKED -	REVISED -
PLOT DATE = 9/4/2025	DATE -	REVISED -

**STATE OF ILLINOIS
 DEPARTMENT OF TRANSPORTATION**

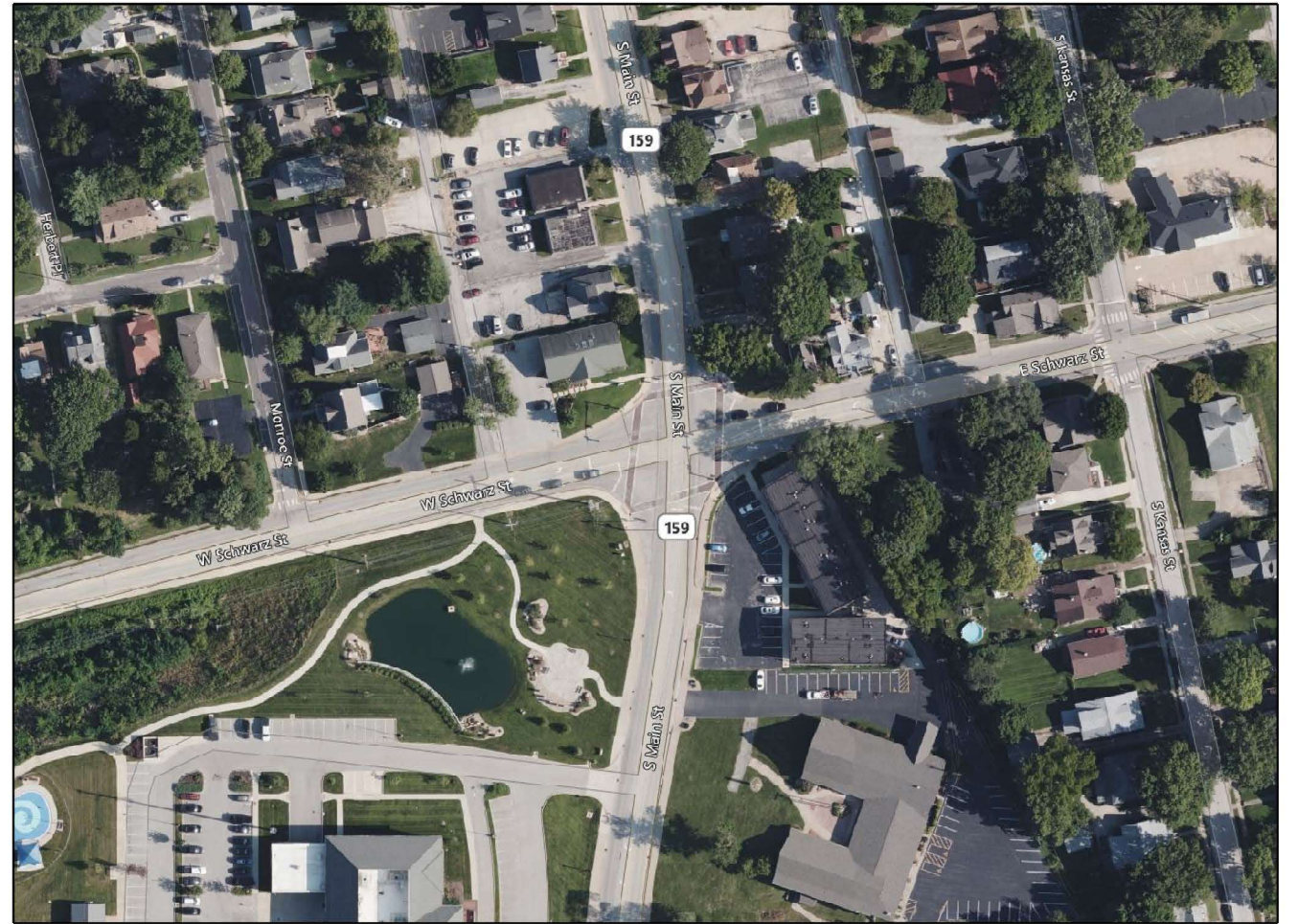
LOCATION MAPS MADISON COUNTY			
SCALE:	SHEET 16	OF 37 SHEETS	STA. TO STA.

F.A. RTE.	SECTION	COUNTY	TOTAL SHEETS	SHEET NO.
*	D 8 HT PVMNT MRK RPR 26-07	MADISON	37	16
*VARIOUS			CONTRACT NO. 46670	
		ILLINOIS	FED. AID PROJECT	

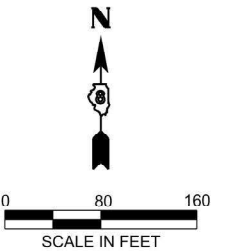
MODEL: Sheet
 FILE NAME: C:\OneDrive\Greene & Bradford Inc\G&B - Projects\2025\25101 - PTB 213-49 D8 Permit Prime\ W04#1 GBI - Project\10 Special Pavement Markings\25101 - Special Pavement Markings\17-15-16 IL 157 IL 143 & IL 159 Schwarz St.dgn



LOCATION # 15
 IL 159 @ IL 157 & IL 143 - EDWARDSVILLE
 INTERSECTION ID # 3740



LOCATION # 16
 IL 159 @ SCHWARZ ST. - EDWARDSVILLE
 INTERSECTION ID # 4370



USER NAME = BenjaminBell	DESIGNED -	REVISED -
	DRAWN -	REVISED -
	CHECKED -	REVISED -
PLOT DATE = 9/4/2025	DATE -	REVISED -

**STATE OF ILLINOIS
 DEPARTMENT OF TRANSPORTATION**

**LOCATION MAPS
 MADISON COUNTY**

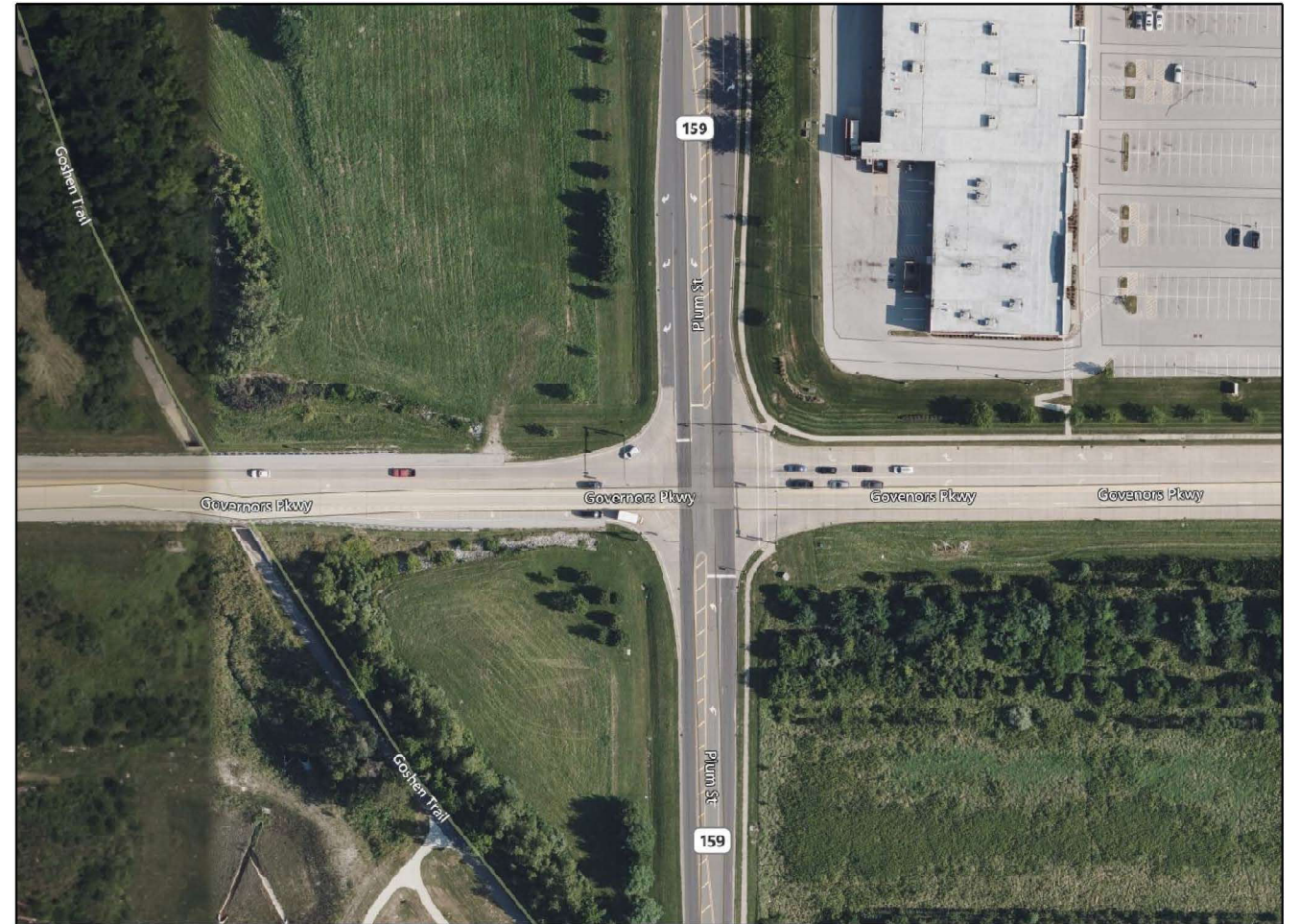
SCALE: SHEET 17 OF 37 SHEETS STA. TO STA.

F.A. RTE.	SECTION	COUNTY	TOTAL SHEETS	SHEET NO.
IL 159	D 8 HT PVMNT MRK RPR 26-07	MADISON	37	17
CONTRACT NO. 46670				
		ILLINOIS	FED. AID PROJECT	

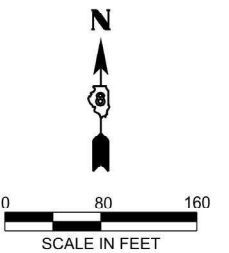
MODEL: Sheet; FILE NAME: C:\OneDrive\Greene & Bradford Inc\G4B - Projects\2025\25101 - PTB 213-49 D6 Permit Prime\ WOF 1 GBI\ Projects\10 Special Pavement Markings\25101 - Special Pavement Markings.dgn; 17-18 IL 159 EDWARDSVILLE CROSSING DR & IL 159 GOVERNORS



LOCATION # 17
 IL 159 @ EDWARDSVILLE CROSSING DR. - EDWARDSVILLE
 INTERSECTION ID # 4363



LOCATION # 18
 IL 159 @ GOVERNORS PARKWAY - EDWARDSVILLE
 INTERSECTION ID # 4361



USER NAME = AlexTrost	DESIGNED -	REVISED -
	DRAWN -	REVISED -
	CHECKED -	REVISED -
PLOT DATE = 9/5/2025	DATE -	REVISED -

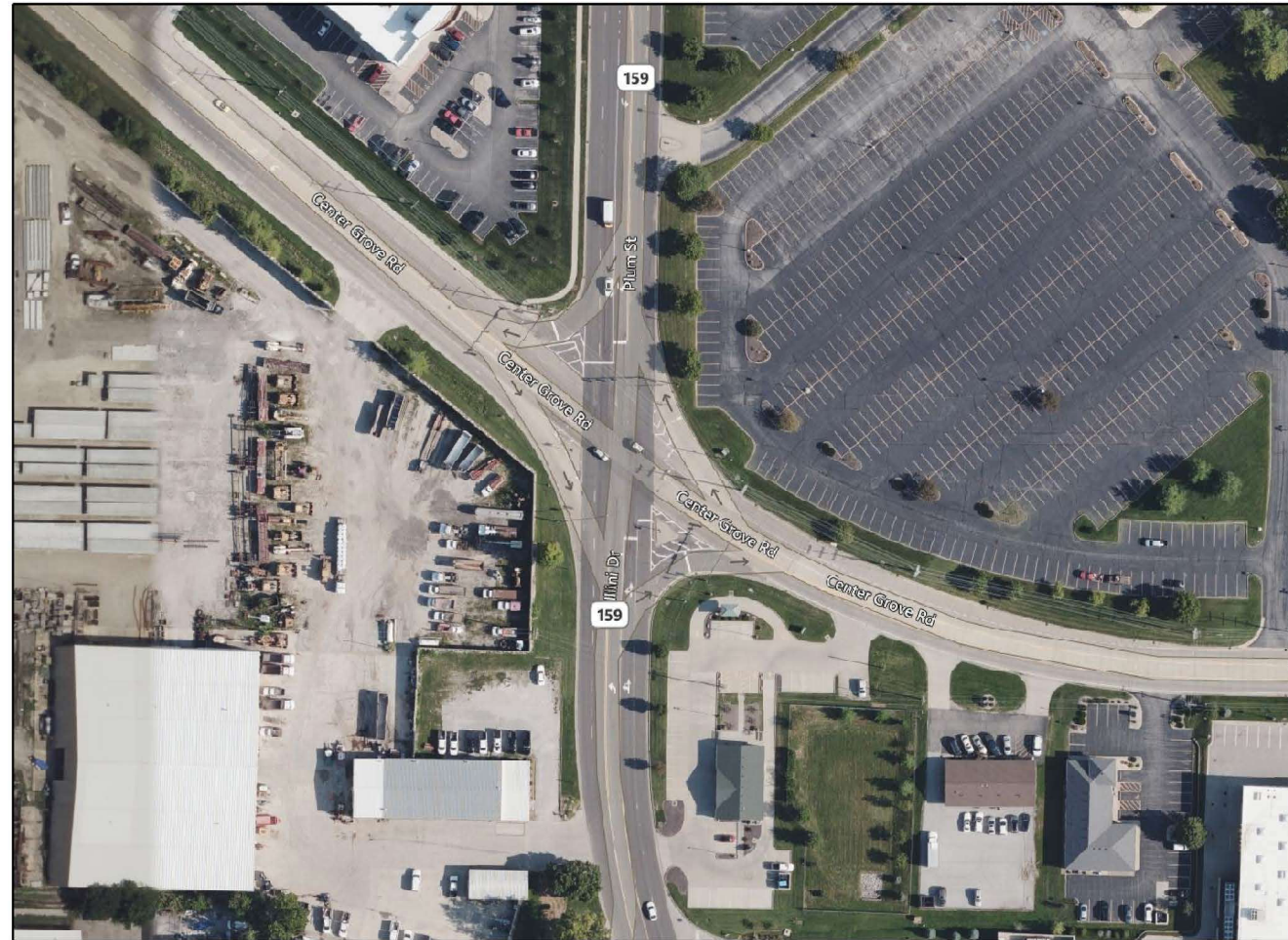
**STATE OF ILLINOIS
 DEPARTMENT OF TRANSPORTATION**

**LOCATION MAPS
 MADISON COUNTY**

SCALE: SHEET 18 OF 37 SHEETS STA. TO STA.

F.A. RTE.	SECTION	COUNTY	TOTAL SHEETS	SHEET NO.
IL 159	D 8 HT PVMNT MRK RPR 26-07	MADISON	37	18
CONTRACT NO. 46670				
		ILLINOIS	FED. AID PROJECT	

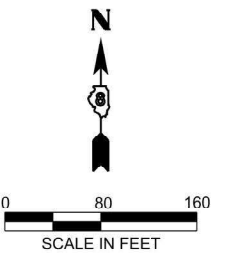
MODEL: Sheet
 FILE NAME: C:\OneDrive\Greene & Bradford Inc\G&B - Projects\2025\25101 - PTB 213-49 D8 Permit Prime\ W04 1 GBI - Project\10 Special Pavement Markings\25101 - 19-20 IL 159 CENTER GROVE RD & L 159 TROY RD.dgn



LOCATION # 19
 IL 159 @ CENTER GROVE RD. - EDWARDSVILLE
 INTERSECTION ID # 4364



LOCATION # 20
 IL 159 @ TROY RD. - EDWARDSVILLE
 INTERSECTION ID # 4362



USER NAME = BenjaminBell	DESIGNED -	REVISED -
	DRAWN -	REVISED -
	CHECKED -	REVISED -
PLOT DATE = 9/4/2025	DATE -	REVISED -

**STATE OF ILLINOIS
 DEPARTMENT OF TRANSPORTATION**

SCALE: SHEET 19 OF 37 SHEETS STA. TO STA.

**LOCATION MAPS
 MADISON COUNTY**

F.A. RTE.	SECTION	COUNTY	TOTAL SHEETS	SHEET NO.
IL 159	D 8 HT PVMNT MRK RPR 26-07	MADISON	37	19
CONTRACT NO. 46670				
		ILLINOIS	FED. AID PROJECT	

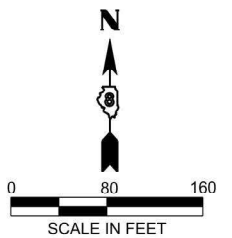
MODEL: Sheet
 FILE NAME: C:\OneDrive\Greene & Bradford Inc\G&B - Projects\2025\25101 - PTB 213-49 D8 Permit\Frma - W04#1 GBI - Project\10 Special Pavement Markings\25101 - Special Pavement Markings\2025\21-22 IL 159_Camelet Dr.dgn



LOCATION # 21
 IL 159 @ E. COUNTRY LN. - COLLINSVILLE
 INTERSECTION ID # 4290



LOCATION # 22
 IL 159 @ CAMELOT DR. - COLLINSVILLE
 INTERSECTION ID # 4285



USER NAME = BenjaminBell	DESIGNED -	REVISED -
	DRAWN -	REVISED -
	CHECKED -	REVISED -
PLOT DATE = 9/4/2025	DATE -	REVISED -

**STATE OF ILLINOIS
 DEPARTMENT OF TRANSPORTATION**

**LOCATION MAPS
 MADISON COUNTY**

SCALE: SHEET 20 OF 37 SHEETS STA. TO STA.

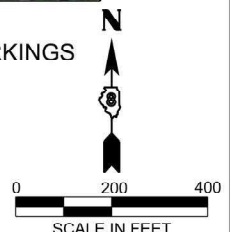
F.A. RTE.	SECTION	COUNTY	TOTAL SHEETS	SHEET NO.
IL 159	D 8 HT PVMNT MRK RPR 26-07	MADISON	37	20
CONTRACT NO. 46670				
		ILLINOIS	FED. AID PROJECT	

MODEL: Sheet
 FILE NAME: C:\OneDrive\Greene & Bradford Inc\G&B - Projects\2025\25101 - PTB 213-49 D8 Permit\Frma\ WOC# 1 GBI - Project\10 Special Pavement Markings\25101-23 IL 100 Piasa to William.dgn



LOCATION # 23
 IL 100 - US 67 @ BROADWAY TO PIASA PARK - ALTON
 SHARED BIKE LANE MARKINGS
 STOP BARS & CROSSWALKS

BEGIN SHARED BIKE LANE MARKINGS
 AT US 67 / IL 100



USER NAME = BenjaminBell	DESIGNED -	REVISED -
	DRAWN -	REVISED -
	CHECKED -	REVISED -
PLOT DATE = 9/5/2025	DATE -	REVISED -

**STATE OF ILLINOIS
 DEPARTMENT OF TRANSPORTATION**

**LOCATION MAPS
 MADISON COUNTY**

SCALE: SHEET 21 OF 37 SHEETS STA. TO STA.

F.A. RTE.	SECTION	COUNTY	TOTAL SHEETS	SHEET NO.
IL 100	D 8 HT PVMNT MRK RPR 26-07	MADISON	37	21
CONTRACT NO. 46670				
ILLINOIS FED. AID PROJECT				

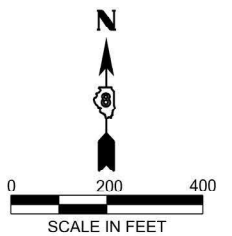
MODEL: Sheet
 FILE NAME: C:\OneDrive\Greene & Bradford Inc\G&B - Projects\2025\25101 - PTB 213-49 D8 Permit Prime\ W0#1 GBI - Projects\10 Special Pavement Markings\25101 - Special Pavement Markings\22-24 Clark Bridge.dgn



END CLARK BRIDGE
 BIKE TRAIL MARKINGS

LOCATION # 24
 US 67/CLARK BRIDGE - ALTON
 BIKE LANE MARKINGS

BEGIN CLARK BRIDGE BIKE TRAIL MARKINGS



USER NAME = BenjaminBell	DESIGNED -	REVISED -
	DRAWN -	REVISED -
	CHECKED -	REVISED -
PLOT DATE = 9/5/2025	DATE -	REVISED -

STATE OF ILLINOIS
DEPARTMENT OF TRANSPORTATION

LOCATION MAPS
MADISON COUNTY

SCALE: SHEET 22 OF 37 SHEETS STA. TO STA.

F.A. RTE.	SECTION	COUNTY	TOTAL SHEETS	SHEET NO.
US 67	D 8 HT PVMNT MRK RPR 26-07	MADISON	37	22
CONTRACT NO. 46670				
ILLINOIS FED. AID PROJECT				

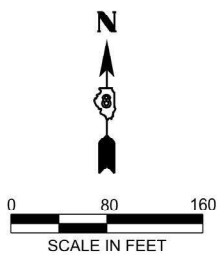
MODEL: Sheet
 FILE NAME: C:\OneDrive\Greene & Bradford Inc\G&B - Projects\2025\25101 - PTB 213-49 D8 Permit Prime\ W04#1 GBI - Project\10 Special Pavement Markings\25101 - Special Pavement Markings\25101 - S Parkway & IL 159_S Parkway & IL 159_Fullerton Rd.dgn



LOCATION # 25
 IL 159 @ S. PARKWAY DR. & METROLINK DR. - SWANSEA
 INTERSECTION ID # 3990



LOCATION # 26
 IL 159 @ FULLERTON RD. - SWANSEA
 INTERSECTION ID # 4000



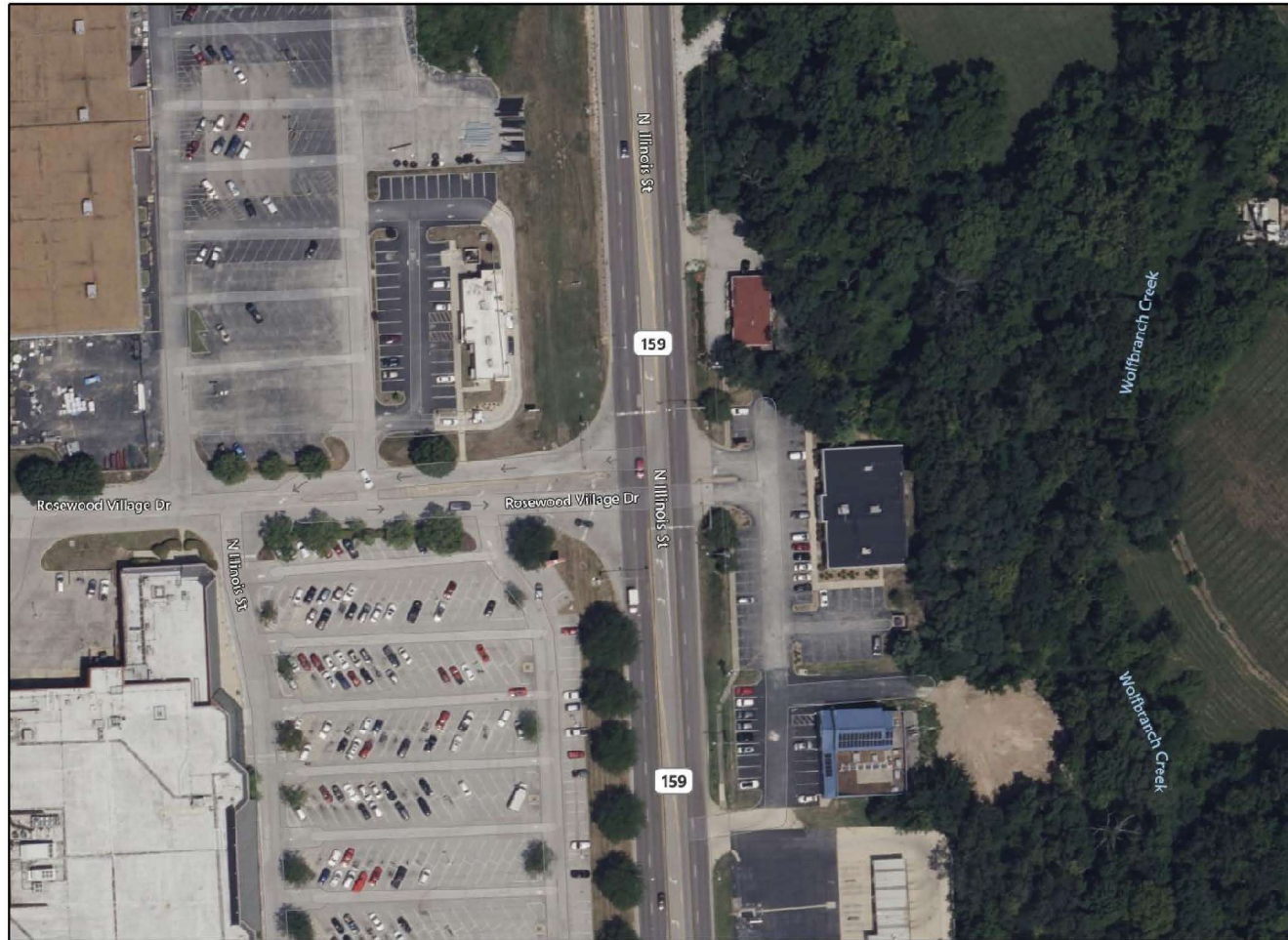
USER NAME = AlexTrost	DESIGNED -	REVISED -
	DRAWN -	REVISED -
	CHECKED -	REVISED -
PLOT DATE = 9/5/2025	DATE -	REVISED -

**STATE OF ILLINOIS
 DEPARTMENT OF TRANSPORTATION**

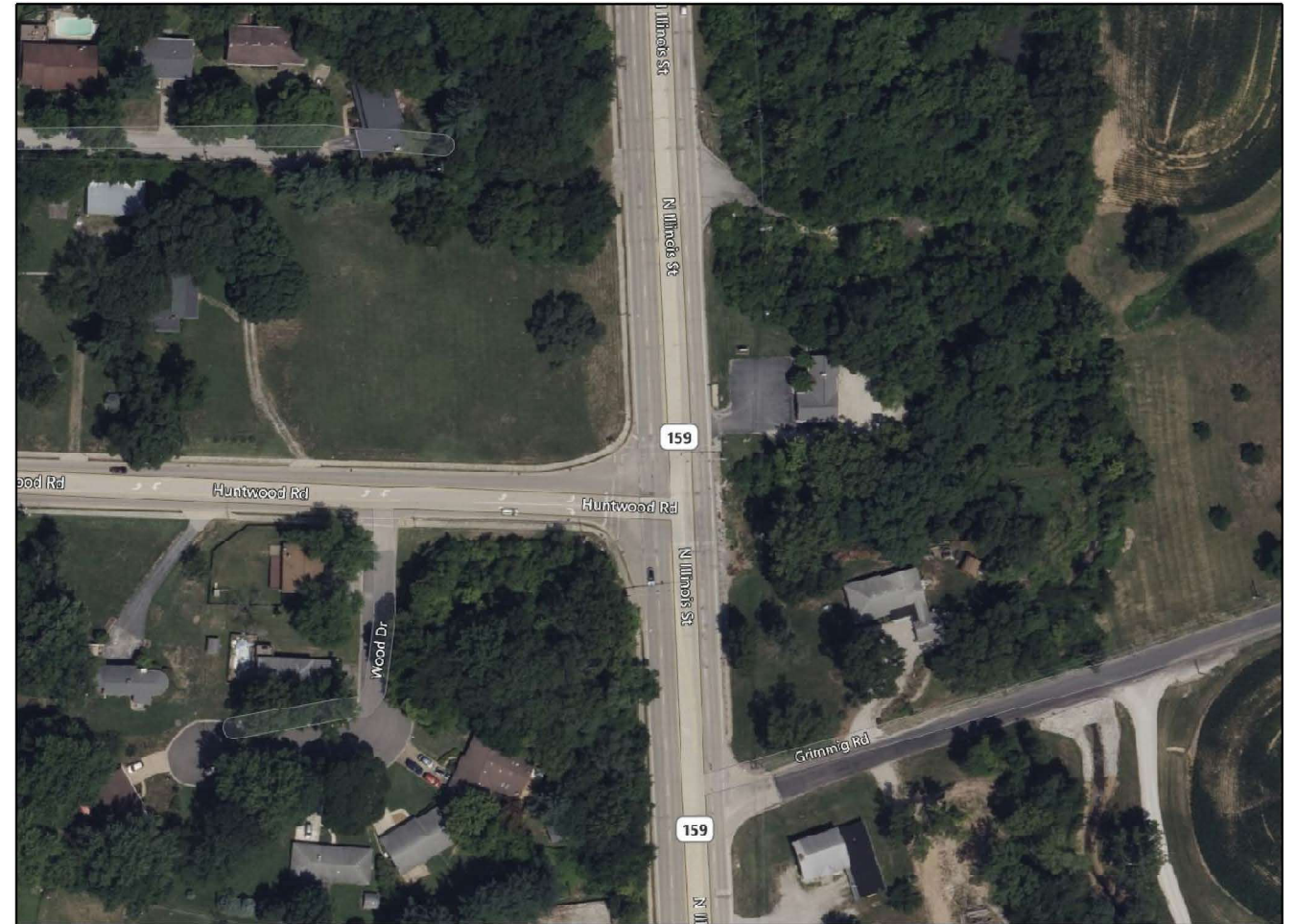
LOCATION MAPS ST. CLAIR COUNTY			
SCALE:	SHEET 23	OF 37 SHEETS	STA. TO STA.

F.A. RTE.	SECTION	COUNTY	TOTAL SHEETS	SHEET NO.
IL 159	D 8 HT PVMNT MRK RPR 26-07	ST. CLAIR	37	23
CONTRACT NO. 46670				
		ILLINOIS	FED. AID PROJECT	

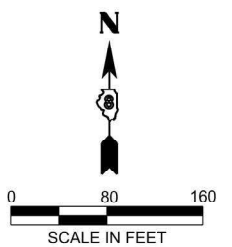
MODEL: Sheet
 FILE NAME: C:\OneDrive\Greene & Bradford Inc\G&B - Projects\2025\25101 - PTB 213-49 D8 Permit\Frma\ W04#1 GBI - Project\10 Special Pavement Markings\25101 - Special Pavement Markings\24-27-28 IL 159 - Rosewood & IL 159 - Huntwood.dgn



LOCATION # 27
 IL 159 @ ROSEWOOD VILLAGE DR. - SWANSEA
 INTERSECTION ID # 4005



LOCATION # 28
 IL 159 @ HUNTWOOD RD. - SWANSEA
 INTERSECTION ID # 4007



USER NAME = BenjaminBell	DESIGNED -	REVISED -
	DRAWN -	REVISED -
	CHECKED -	REVISED -
PLOT DATE = 9/5/2025	DATE -	REVISED -

**STATE OF ILLINOIS
 DEPARTMENT OF TRANSPORTATION**

**LOCATION MAPS
 ST. CLAIR COUNTY**

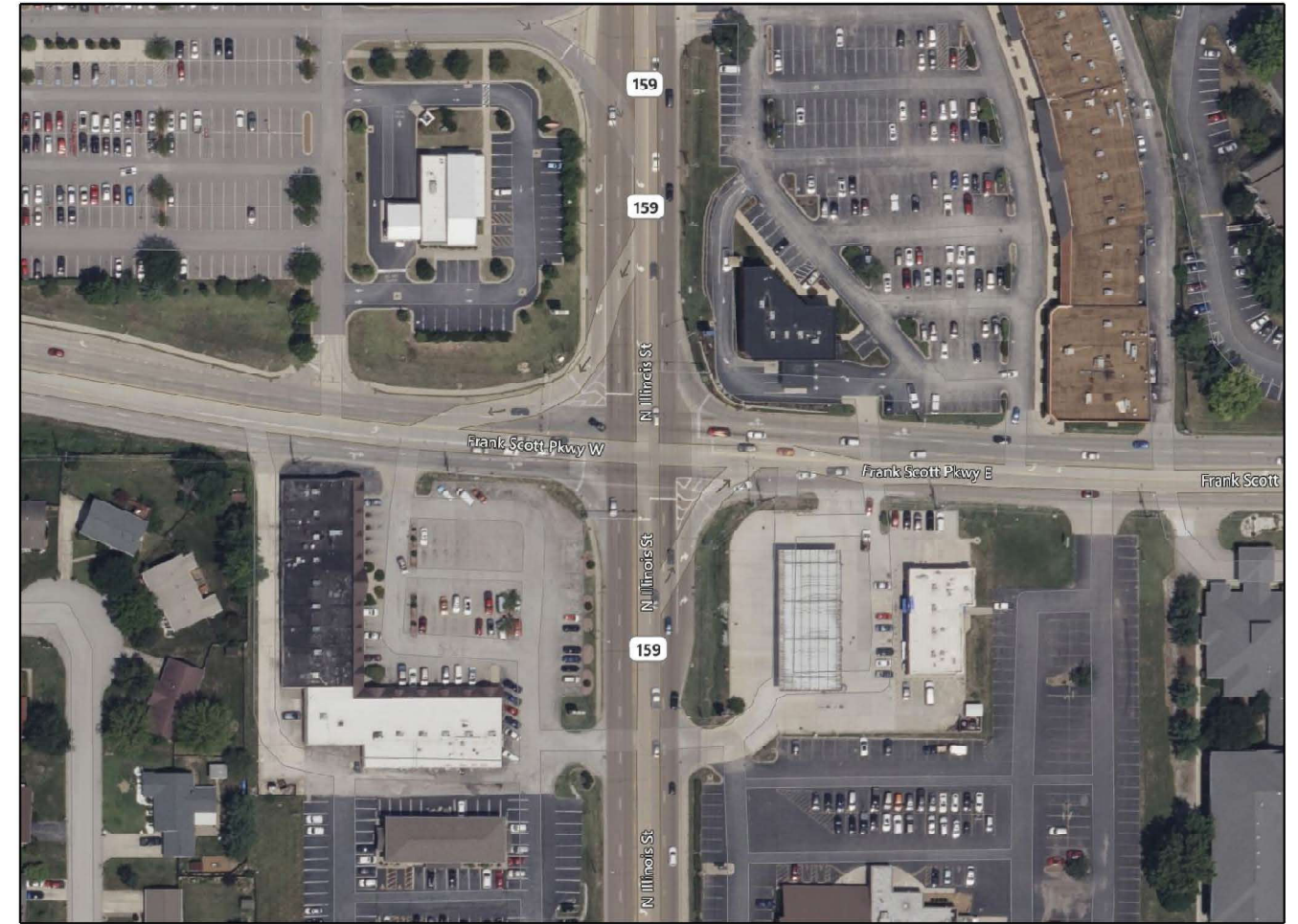
SCALE: SHEET 24 OF 37 SHEETS STA. TO STA.

F.A. RTE.	SECTION	COUNTY	TOTAL SHEETS	SHEET NO.
IL 159	D 8 HT PVMNT MRK RPR 26-07	ST. CLAIR	37	24
CONTRACT NO. 46670				
ILLINOIS FED. AID PROJECT				

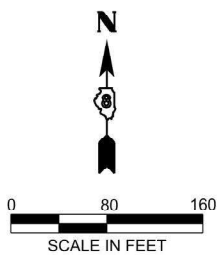
MODEL: Sheet
 FILE NAME: C:\OneDrive\Greene & Bradford Inc\G&B - Projects\2025\25101 - PTB 213-49 D8 Permit Prime\ W04#1 GBI - Project\10 Special Pavement Markings\25101 - Special Pavement Markings\25101 - 159 Frank Scott Pkwy.dgn



LOCATION # 29
 IL 159 @ GREEN HAVEN DR. - SWANSEA
 INTERSECTION ID # 4008



LOCATION # 30
 IL 159 @ FRANK SCOTT PKWY. - SWANSEA/FAIRVIEW HEIGHTS
 INTERSECTION ID # 4010



USER NAME = BenjaminBell	DESIGNED -	REVISED -
	DRAWN -	REVISED -
	CHECKED -	REVISED -
PLOT DATE = 9/5/2025	DATE -	REVISED -

**STATE OF ILLINOIS
 DEPARTMENT OF TRANSPORTATION**

**LOCATION MAPS
 ST. CLAIR COUNTY**

SCALE: SHEET 25 OF 37 SHEETS STA. TO STA.

F.A. RTE.	SECTION	COUNTY	TOTAL SHEETS	SHEET NO.
IL 159	D 8 HT PVMNT MRK RPR 26-07	ST. CLAIR	37	25
CONTRACT NO. 46670				
		ILLINOIS	FED. AID PROJECT	

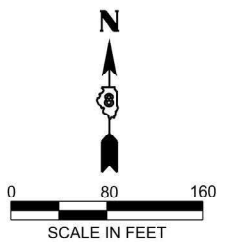
MODEL: Sheet
 FILE NAME: C:\OneDrive\Greene & Bradford Inc\G&B - Projects\2025\25101 - PTB 213-49 D8 Permit Prime\ W04#1 GBI - Project\10 Special Pavement Markings\25101 - Special Pavement Markings\25101-32 IL 159 Chateau & IL 159 Long Acre Dr.dgn



LOCATION # 31
 IL 159 @ CHATEAU DR. - FAIRVIEW HEIGHTS
 INTERSECTION ID # 4015



LOCATION # 32
 IL 159 @ LONG ACRE DR. - FAIRVIEW HEIGHTS
 INTERSECTION ID # 4020



USER NAME = BenjaminBell	DESIGNED -	REVISED -
	DRAWN -	REVISED -
	CHECKED -	REVISED -
PLOT DATE = 9/5/2025	DATE -	REVISED -

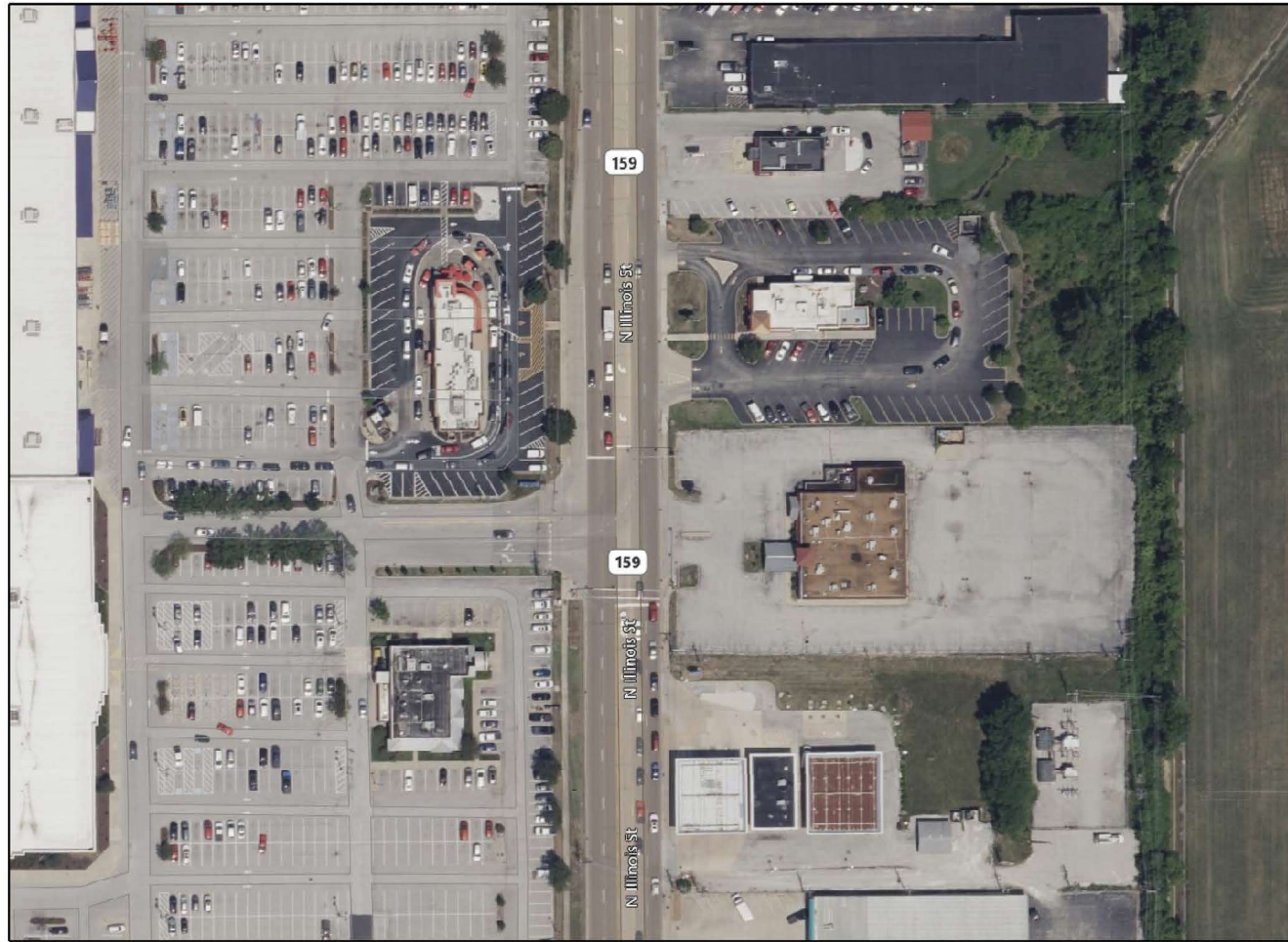
**STATE OF ILLINOIS
 DEPARTMENT OF TRANSPORTATION**

**LOCATION MAPS
 ST. CLAIR COUNTY**

SCALE: SHEET 26 OF 37 SHEETS STA. TO STA.

F.A. RTE.	SECTION	COUNTY	TOTAL SHEETS	SHEET NO.
IL 159	D 8 HT PVMNT MRK RPR 26-07	ST. CLAIR	37	26
CONTRACT NO. 46670				
		ILLINOIS	FED. AID PROJECT	

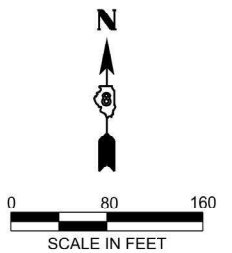
MODEL: Sheet
 FILE NAME: C:\OneDrive\Greene & Bradford Inc\G&B - Projects\2025\25101 - PTB 213-49 D8 Permit Prime\ W04#1 GBI - Projects\10 Special Pavement Markings\25101 - Special Pavement Markings\25101-33-34 IL 159 Lincoln Place & IL 159 Lincoln Trail.dgn



LOCATION # 33
 IL 159 @ LINCOLN PLACE - FAIRVIEW HEIGHTS
 INTERSECTION ID # 4030



LOCATION # 34
 IL 159 @ LINCOLN TRAIL - FAIRVIEW HEIGHTS
 INTERSECTION ID # 4040



USER NAME = BenjaminBell	DESIGNED -	REVISED -
	DRAWN -	REVISED -
	CHECKED -	REVISED -
PLOT DATE = 9/5/2025	DATE -	REVISED -

**STATE OF ILLINOIS
 DEPARTMENT OF TRANSPORTATION**

**LOCATION MAPS
 ST. CLAIR COUNTY**

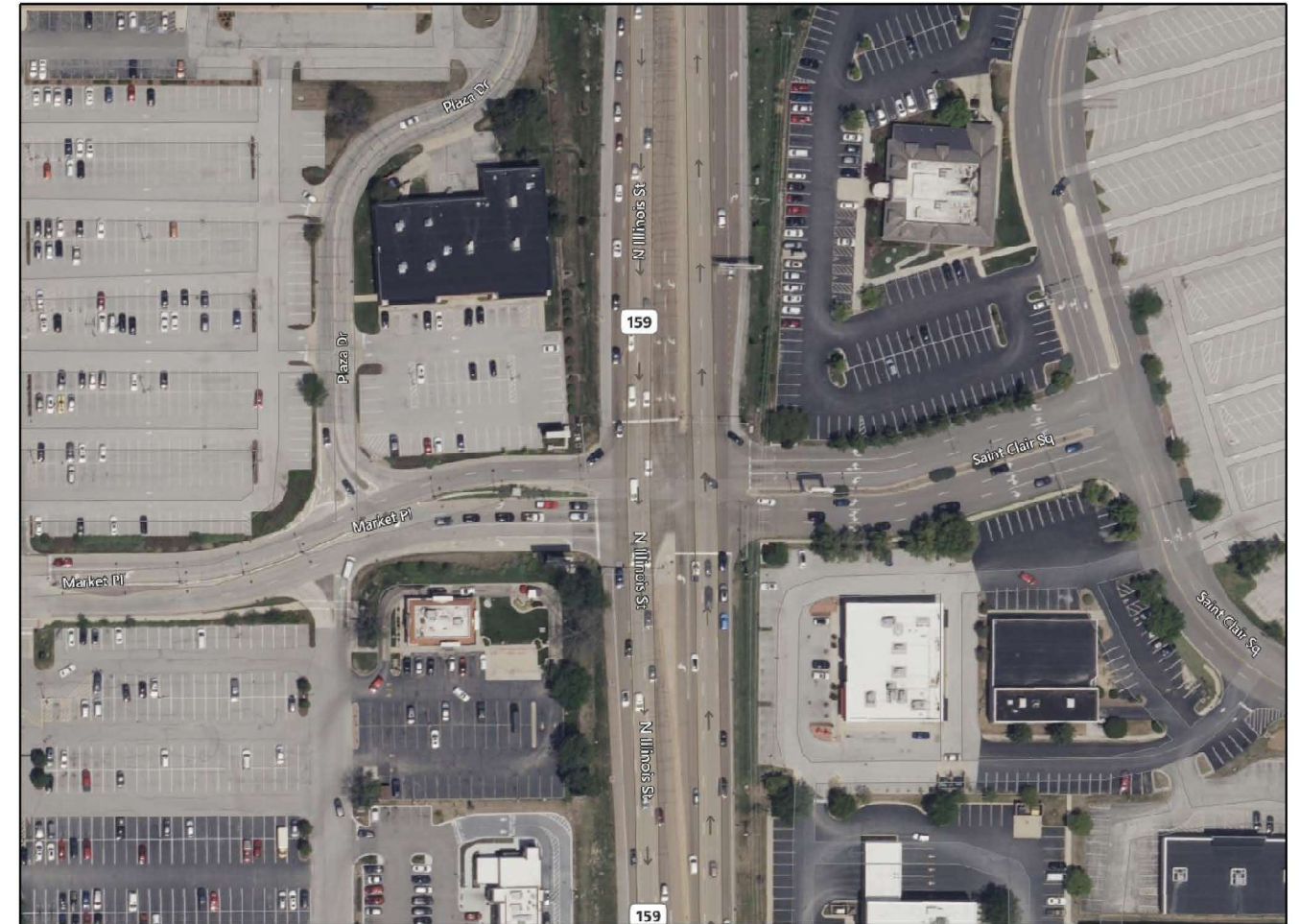
SCALE: SHEET 27 OF 37 SHEETS STA. TO STA.

F.A. RTE.	SECTION	COUNTY	TOTAL SHEETS	SHEET NO.
IL 159	D 8 HT PVMNT MRK RPR 26-07	ST. CLAIR	37	27
CONTRACT NO. 46670				
		ILLINOIS	FED. AID PROJECT	

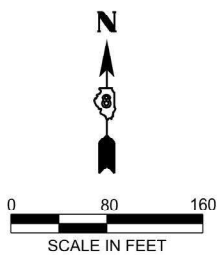
MODEL: Sheet
 FILE NAME: C:\OneDrive\Greene & Bradford Inc\G&B - Projects\2025\25101 - PTB 213-49 D8 Permit Prime\ W04 1 GBI - Project\10 Special Pavement Markings\25101 - Special Pavement Markings\25101 - IL 159 St Clair Square S & IL 159 St Clair Square N.dgn



LOCATION # 35
 IL 159 @ ST. CLAIR SQUARE (S. ENTRANCE) - FAIRVIEW HEIGHTS
 INTERSECTION ID # 4060



LOCATION # 36
 IL 159 @ MARKET PLACE (N. ENTRANCE) - FAIRVIEW HEIGHTS
 INTERSECTION ID # 4080



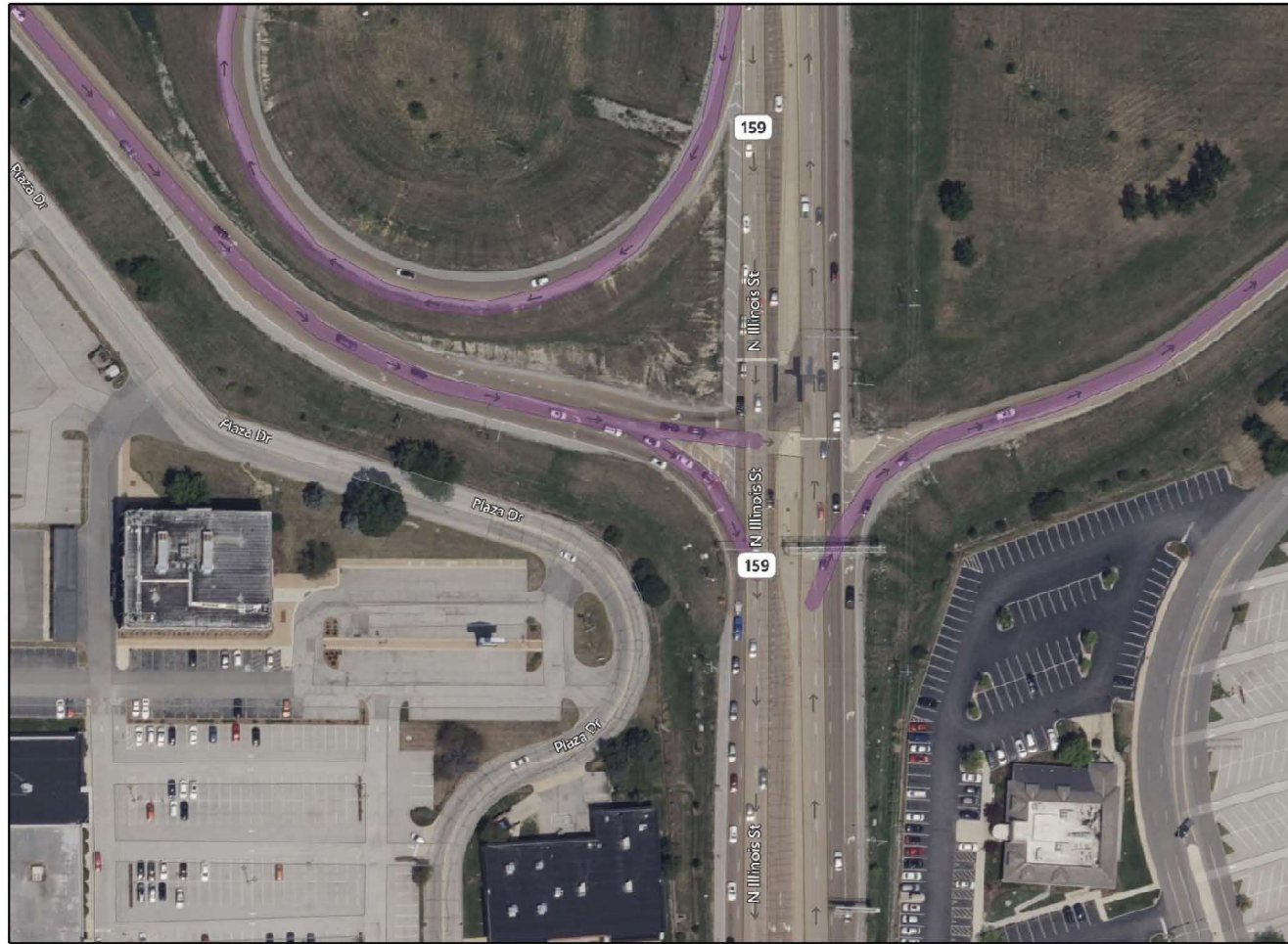
USER NAME = BenjaminBell	DESIGNED -	REVISED -
	DRAWN -	REVISED -
	CHECKED -	REVISED -
PLOT DATE = 9/5/2025	DATE -	REVISED -

**STATE OF ILLINOIS
 DEPARTMENT OF TRANSPORTATION**

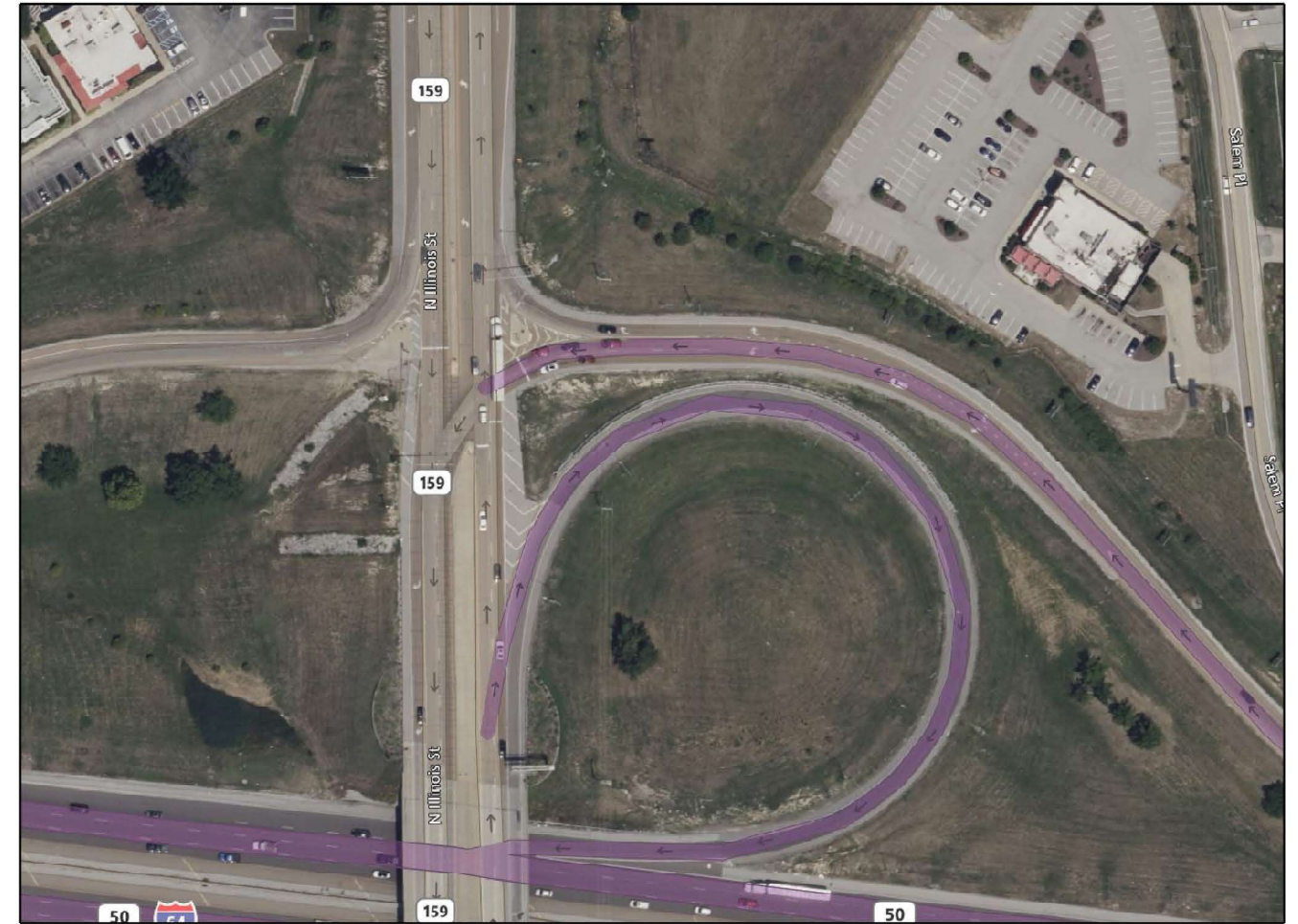
LOCATION MAPS ST. CLAIR COUNTY			
SCALE:	SHEET 28	OF 37 SHEETS	STA. TO STA.

F.A. RTE.	SECTION	COUNTY	TOTAL SHEETS	SHEET NO.
IL 159	D 8 HT PVMNT MRK RPR 26-07	ST. CLAIR	37	28
CONTRACT NO. 46670				
ILLINOIS FED. AID PROJECT				

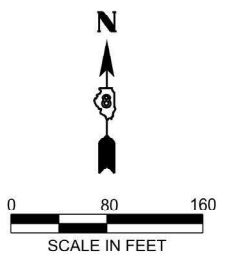
MODEL: Sheet
 FILE NAME: C:\OneDrive\Greene & Bradford Inc\G&B - Projects\2025\25101 - PTB 213-49 D8 Permit Prime\ W04 1 GBI - Project\10 Special Pavement Markings\25101 - Special Pavement Markings\25101 - S. JUNCTION & I-159 I-64 S. JUNCTION & I-159 N. JUNCTION.dgn



LOCATION # 37
 IL 159 @ I-64 (S. JUNCTION) - FAIRVIEW HEIGHTS
 INTERSECTION ID # 4100



LOCATION # 38
 IL 159 @ NORTH JUNCTION I-64 - FAIRVIEW HEIGHTS
 INTERSECTION ID # 4120



USER NAME = BenjaminBell	DESIGNED -	REVISED -
	DRAWN -	REVISED -
	CHECKED -	REVISED -
PLOT DATE = 9/5/2025	DATE -	REVISED -

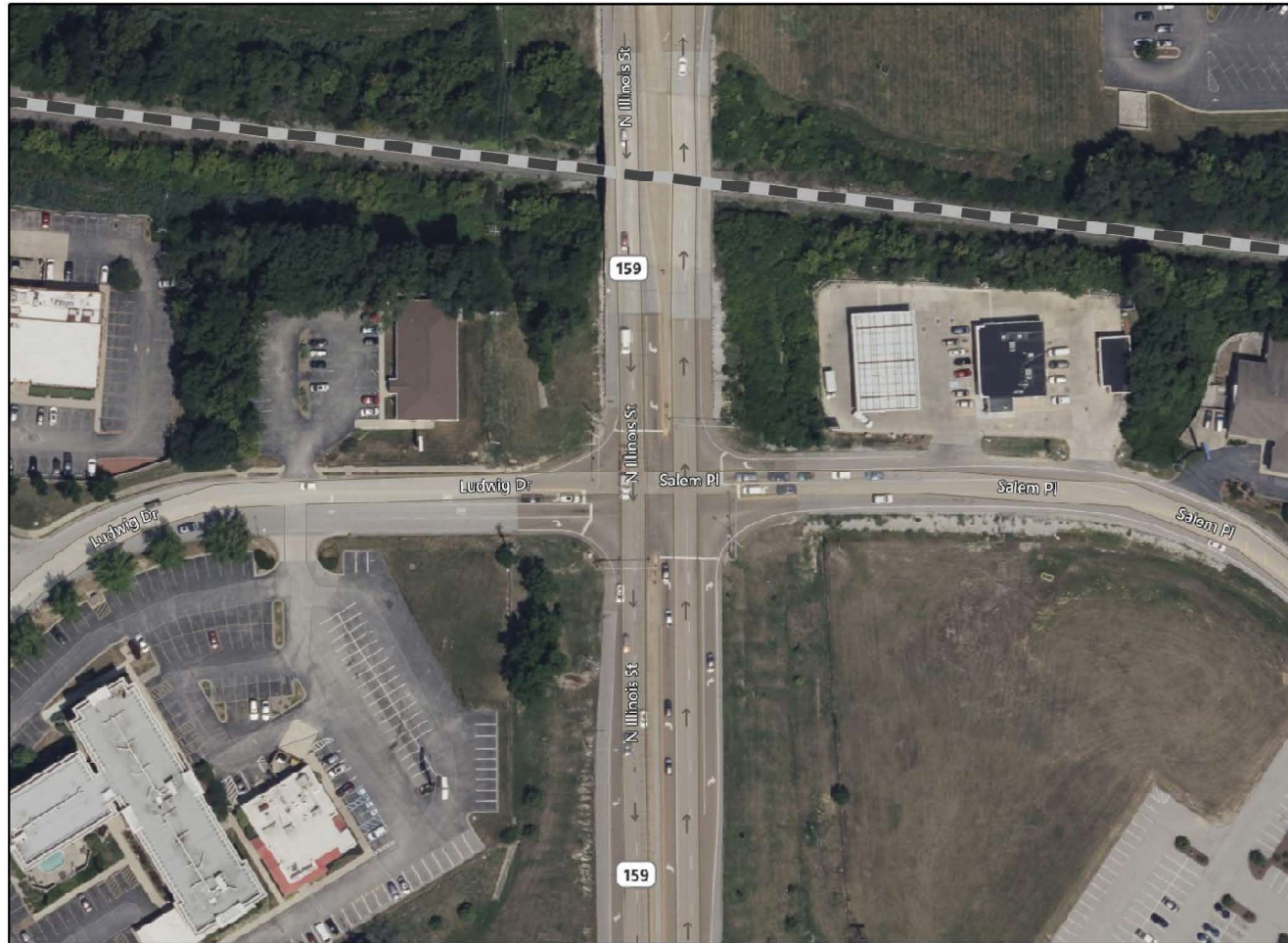
**STATE OF ILLINOIS
 DEPARTMENT OF TRANSPORTATION**

**LOCATION MAPS
 ST. CLAIR COUNTY**

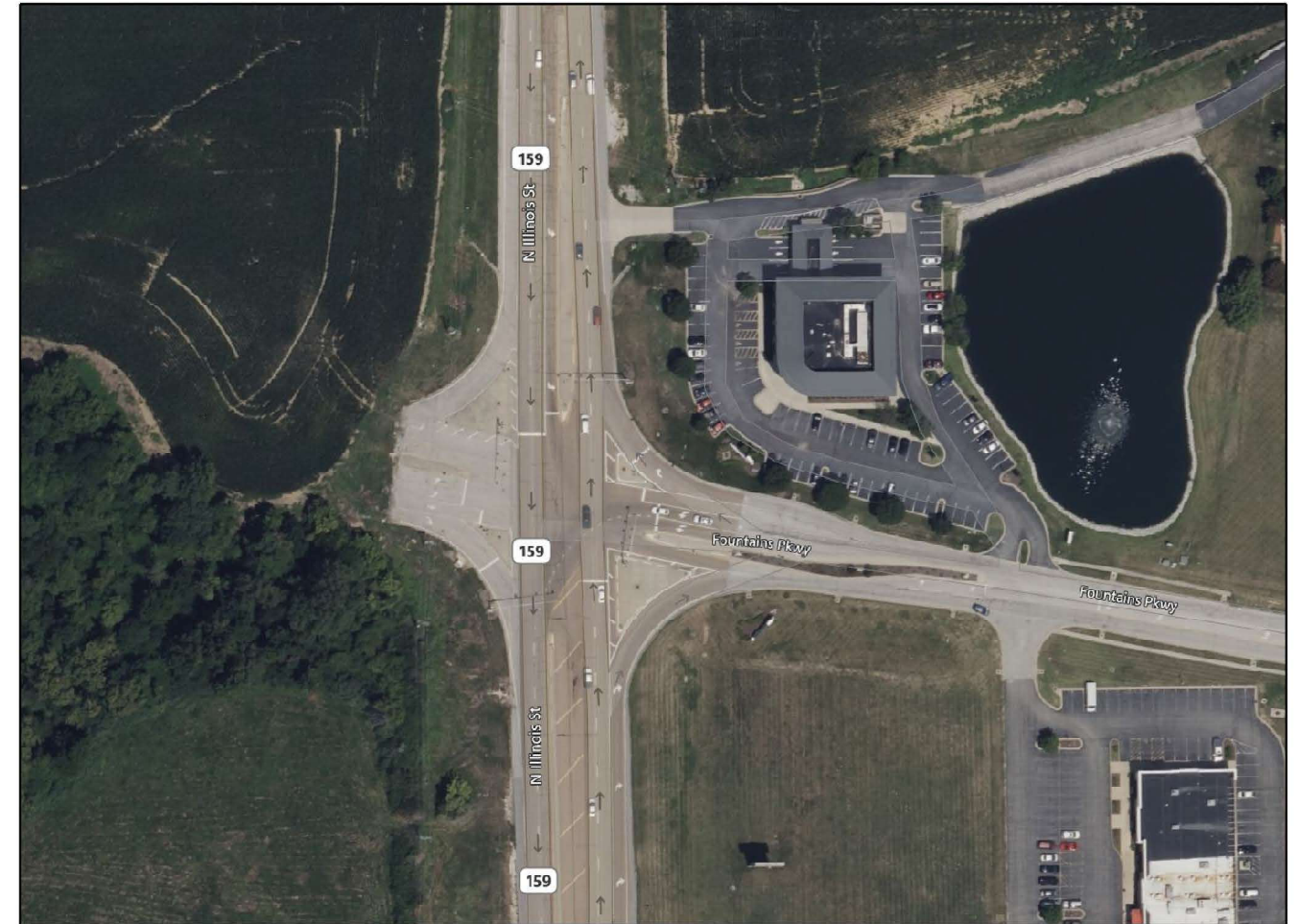
SCALE: SHEET 29 OF 37 SHEETS STA. TO STA.

F.A. RTE.	SECTION	COUNTY	TOTAL SHEETS	SHEET NO.
IL 159	D 8 HT PVMNT MRK RPR 26-07	ST. CLAIR	37	29
CONTRACT NO. 46670				
ILLINOIS FED. AID PROJECT				

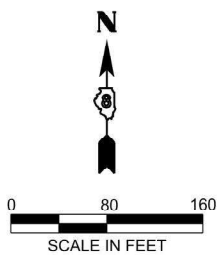
MODEL: Sheet
 FILE NAME: C:\OneDrive\Greene & Bradford Inc\G&B - Projects\2025\25101 - PTB 213-49 D8 Permit Prime\ W04-1 GBI - Project\10 Special Pavement Markings\25101 - Special Pavement Markings\25101-159 Ludwig & IL 159 Fountains Pkwy.dgn



LOCATION # 39
 IL 159 @ LUDWIG DR. - FAIRVIEW HEIGHTS
 INTERSECTION ID # 4140



LOCATION # 40
 IL 159 @ FOUNTAINS PKWY. - FAIRVIEW HEIGHTS
 INTERSECTION ID # 4150



USER NAME = BenjaminBell	DESIGNED -	REVISED -
	DRAWN -	REVISED -
	CHECKED -	REVISED -
PLOT DATE = 9/5/2025	DATE -	REVISED -

**STATE OF ILLINOIS
 DEPARTMENT OF TRANSPORTATION**

**LOCATION MAPS
 ST. CLAIR COUNTY**

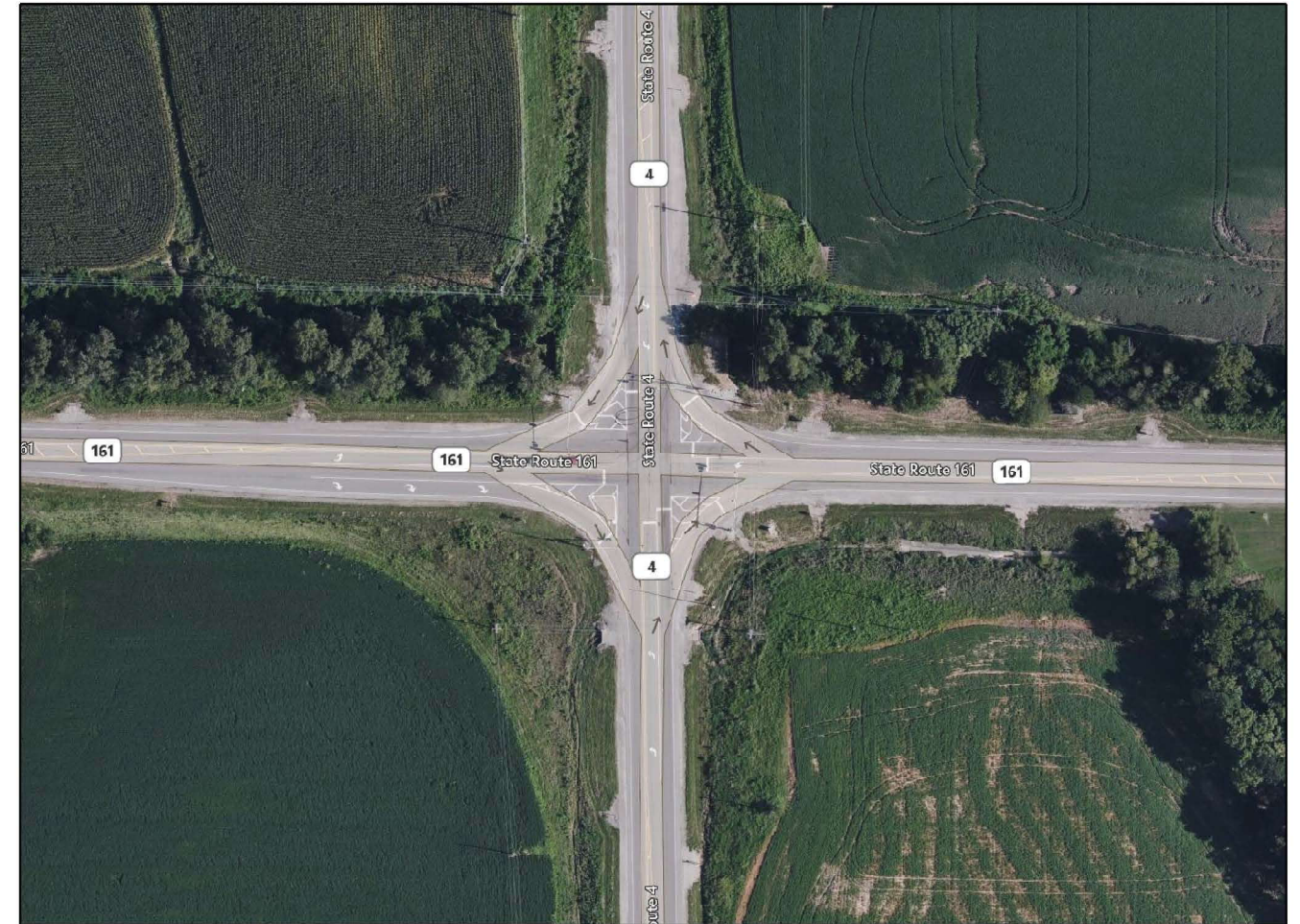
SCALE: SHEET 30 OF 37 SHEETS STA. TO STA.

F.A. RTE.	SECTION	COUNTY	TOTAL SHEETS	SHEET NO.
IL 159	D 8 HT PVMNT MRK RPR 26-07	ST. CLAIR	37	30
CONTRACT NO. 46670				
		ILLINOIS	FED. AID PROJECT	

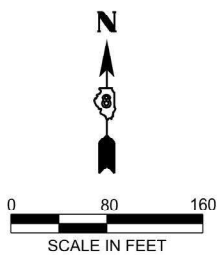
MODEL: Sheet
 FILE NAME: C:\OneDrive\Greene & Bradford Inc\G&B - Projects\2025\25101 - PTB 213-49 D8 Permit\Frma\ WOC# 1 GBI - Project\10 Special Pavement Markings\31-41-42 IL 161 North Belt West-Fullerton Rd & IL 4 IL 161.dgn



LOCATION # 41
 IL 161 @ NORTH BELT WEST/FULLERTON RD. - SWANSEA
 INTERSECTION ID # 4620



LOCATION # 42
 IL 4 @ IL 161 - MASCOUTAH
 INTERSECTION ID # 650



USER NAME = BenjaminBell	DESIGNED -	REVISED -
	DRAWN -	REVISED -
	CHECKED -	REVISED -
PLOT DATE = 9/5/2025	DATE -	REVISED -

**STATE OF ILLINOIS
 DEPARTMENT OF TRANSPORTATION**

**LOCATION MAPS
 ST. CLAIR COUNTY**

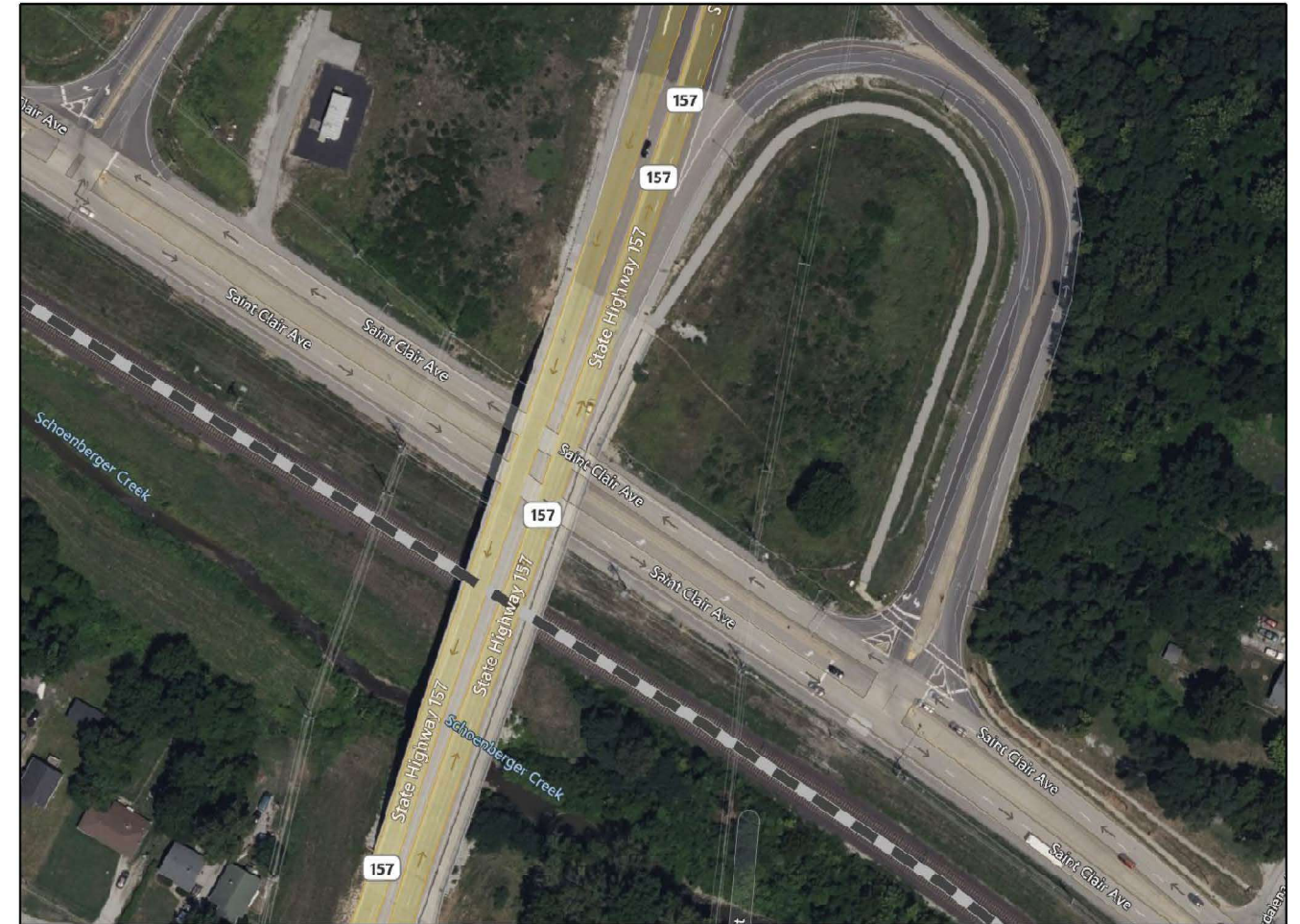
SCALE: SHEET 31 OF 37 SHEETS STA. TO STA.

F.A. RTE.	SECTION	COUNTY	TOTAL SHEETS	SHEET NO.
IL 161	D 8 HT PVMNT MRK RPR 26-07	ST. CLAIR	37	31
CONTRACT NO. 46670				
		ILLINOIS	FED. AID PROJECT	

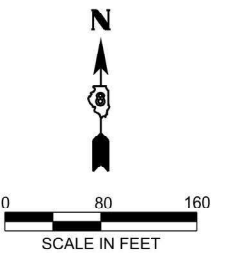
MODEL: Sheet
 FILE NAME: C:\OneDrive\Greene & Bradford Inc\G&B - Projects\2025\25101 - PTB 213-49 D8 Permit\Frma\ W0#1 GBI - Project\10 Special Pavement Markings\25101 - Special Pavement Markings\25101-4-164 & IL 157 East Junction.dgn



LOCATION # 43
 IL 4 @ I-64 (S. JUNCTION) - MASCOUTAH
 INTERSECTION ID # 652



LOCATION # 44
 IL 157 @ EAST JUNCTION OF ST. CLAIR AVE. - FAIRVIEW HEIGHTS
 INTERSECTION ID # 3340



USER NAME = BenjaminBell	DESIGNED -	REVISED -
	DRAWN -	REVISED -
	CHECKED -	REVISED -
PLOT DATE = 9/5/2025	DATE -	REVISED -

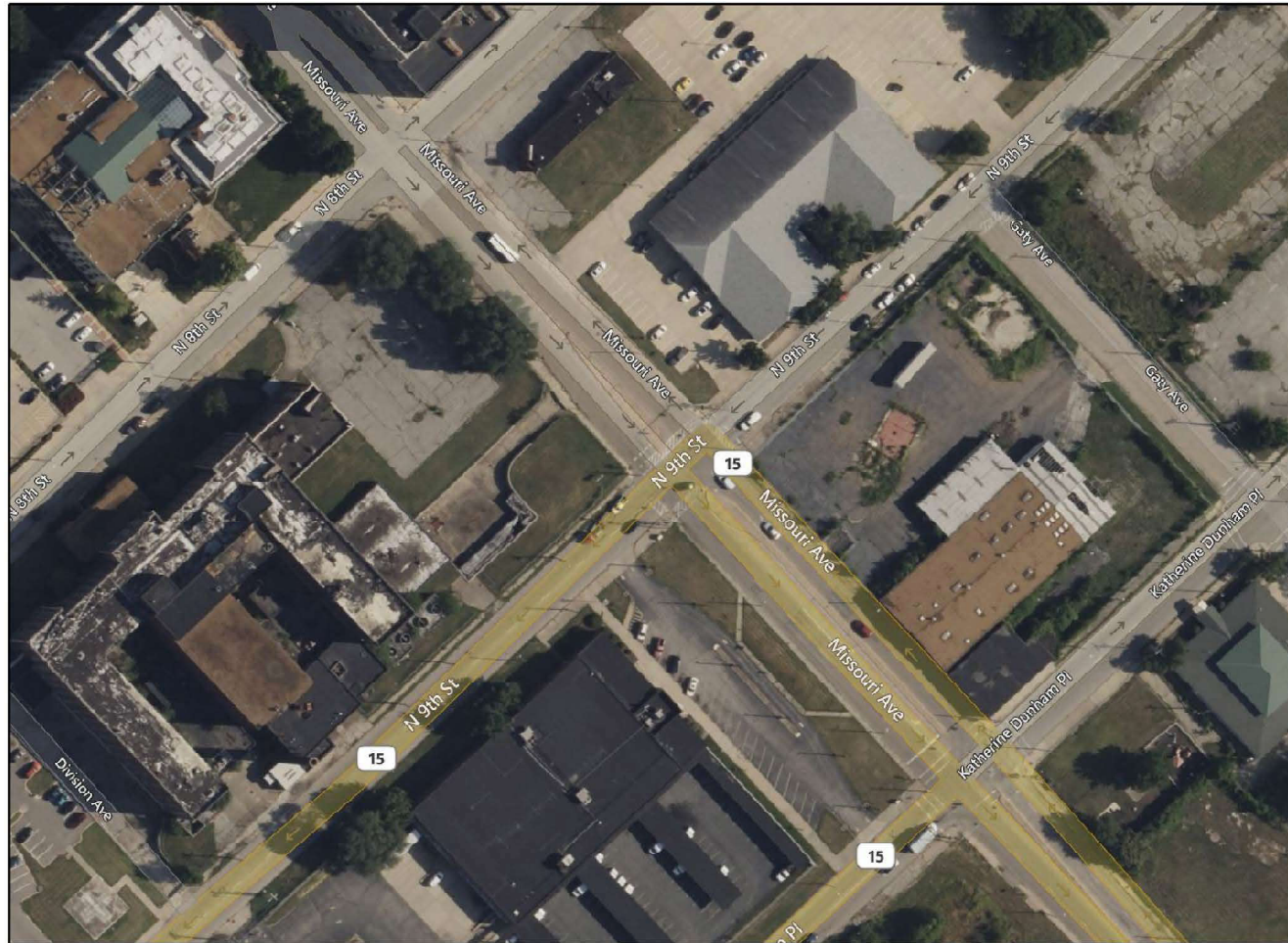
**STATE OF ILLINOIS
 DEPARTMENT OF TRANSPORTATION**

**LOCATION MAPS
 ST. CLAIR COUNTY**

SCALE: SHEET 32 OF 37 SHEETS STA. TO STA.

F.A. RTE.	SECTION	COUNTY	TOTAL SHEETS	SHEET NO.
*	D 8 HT PVMNT MRK RPR 26-07	ST. CLAIR	37	32
*VARIOUS			CONTRACT NO. 46670	
ILLINOIS		FED. AID PROJECT		

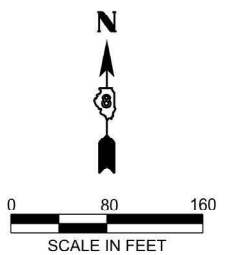
MODEL: Sheet
 FILE NAME: C:\OneDrive\Greene & Bradford Inc\G&B - Projects\2025\25101 - PTB 213-49 D8 Permit Prime\ W04#1 GBI - Project\10 Special Pavement Markings\25101 - Special Pavement Markings\25101 - L 15 9th St & L 15 10th St.dwg



LOCATION # 45
 IL 15/MISSOURI AVE. @ N. 9TH ST. - EAST ST. LOUIS
 INTERSECTION ID # 740



LOCATION # 46
 IL 15/MISSOURI AVE. @ N. 10TH ST. - EAST ST. LOUIS
 INTERSECTION ID # 780



USER NAME = BenjaminBell	DESIGNED -	REVISED -
	DRAWN -	REVISED -
	CHECKED -	REVISED -
PLOT DATE = 9/5/2025	DATE -	REVISED -

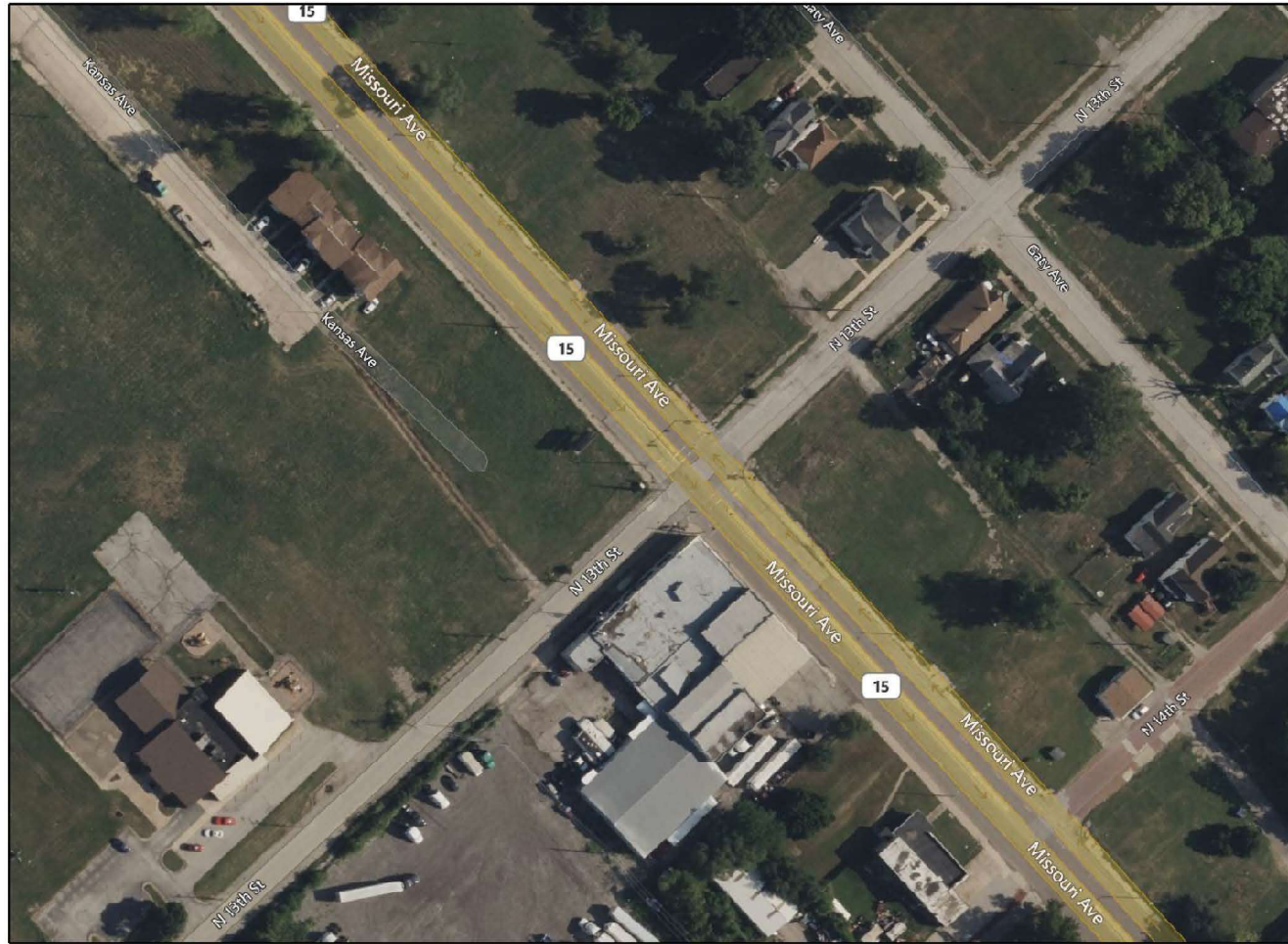
**STATE OF ILLINOIS
 DEPARTMENT OF TRANSPORTATION**

**LOCATION MAPS
 ST. CLAIR COUNTY**

SCALE: SHEET 33 OF 37 SHEETS STA. TO STA.

F.A. RTE.	SECTION	COUNTY	TOTAL SHEETS	SHEET NO.
IL 15	D 8 HT PVMNT MRK RPR 26-07	ST. CLAIR	37	33
CONTRACT NO. 46670				
ILLINOIS FED. AID PROJECT				

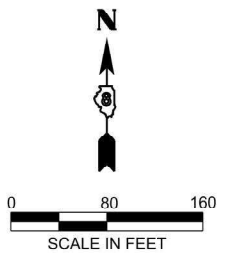
MODEL: Sheet
 FILE NAME: C:\OneDrive\Greene & Bradford Inc\G&B - Projects\2025\25101 - PTB 213-49 D8 Permit Prime\ W0#1 GBI - Project\10 Special Pavement Markings\25101 - Special Pavement Markings\25101 - IL 15, N 13th St & IL 15, 15th St.dgn



LOCATION # 47
 IL 15/MISSOURI AVE. @ N. 13TH ST. - EAST ST. LOUIS
 INTERSECTION ID # 840



LOCATION # 48
 IL 15/MISSOURI AVE. @ N. 15TH ST. - EAST ST. LOUIS
 INTERSECTION ID # 1040



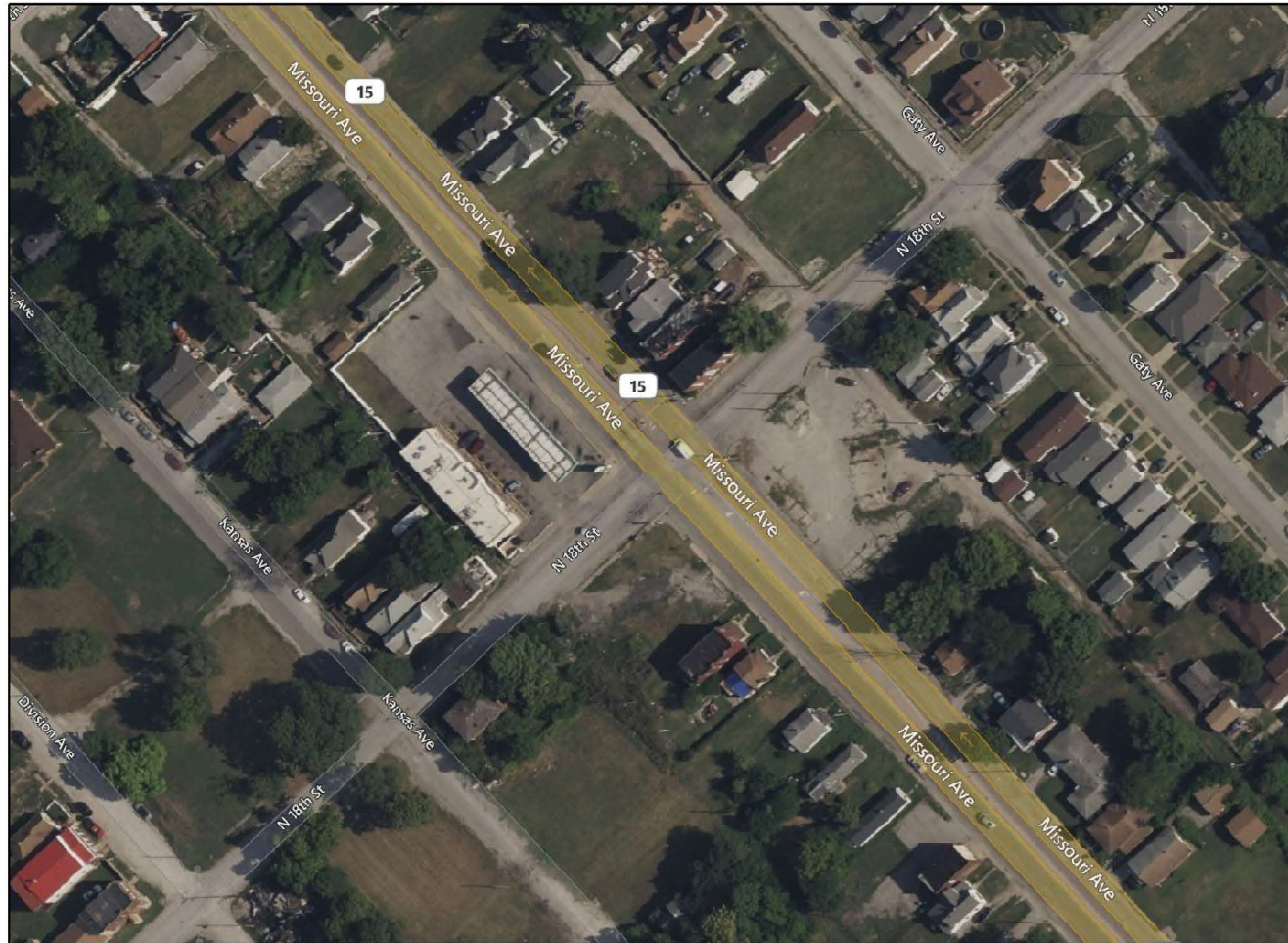
USER NAME = BenjaminBell	DESIGNED -	REVISED -
	DRAWN -	REVISED -
	CHECKED -	REVISED -
PLOT DATE = 9/5/2025	DATE -	REVISED -

**STATE OF ILLINOIS
 DEPARTMENT OF TRANSPORTATION**

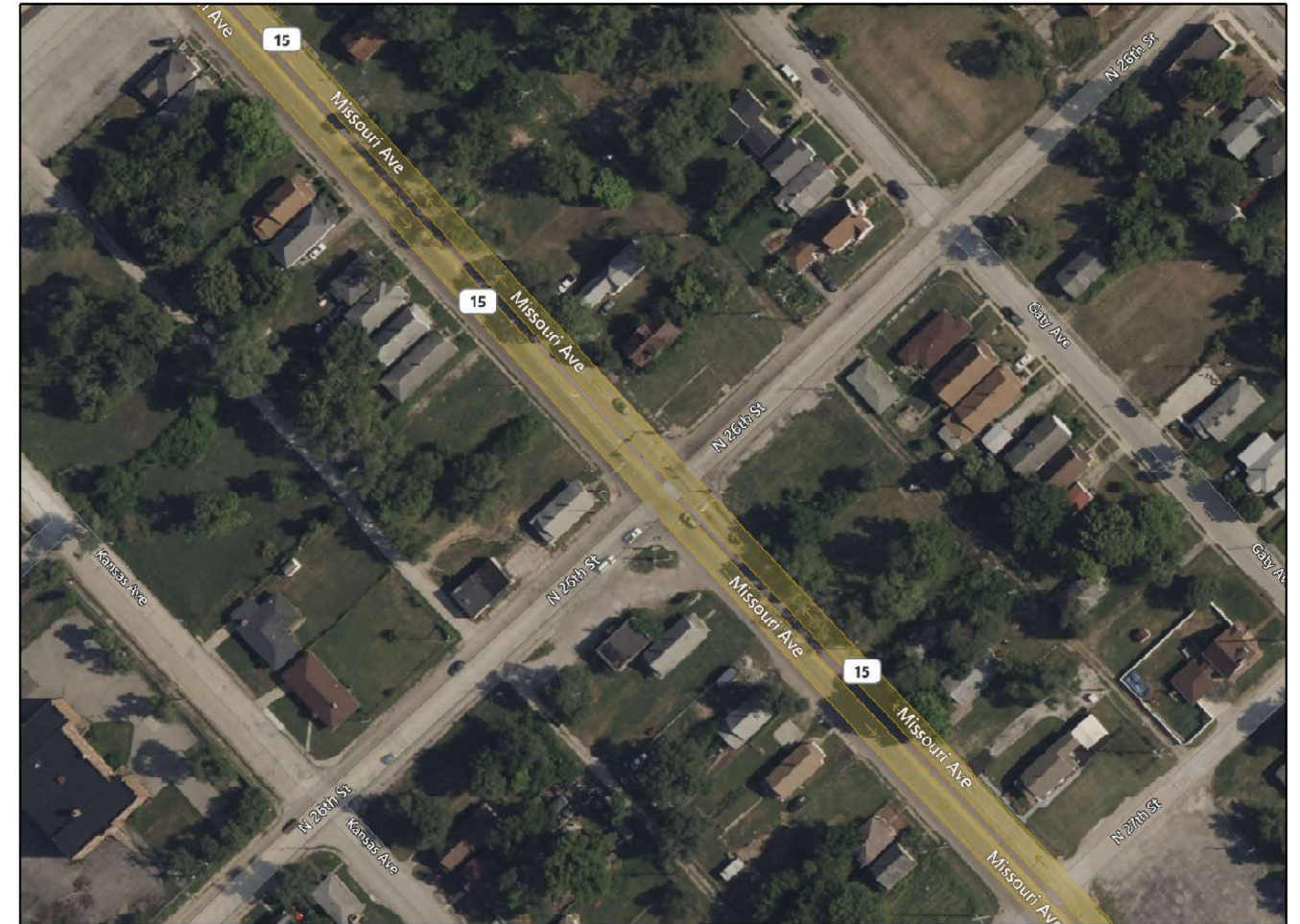
LOCATION MAPS ST. CLAIR COUNTY			
SCALE:	SHEET 34	OF 37 SHEETS	STA. TO STA.

F.A. RTE.	SECTION	COUNTY	TOTAL SHEETS	SHEET NO.
IL 15	D 8 HT PVMNT MRK RPR 26-07	ST. CLAIR	37	34
CONTRACT NO. 46670				
		ILLINOIS	FED. AID PROJECT	

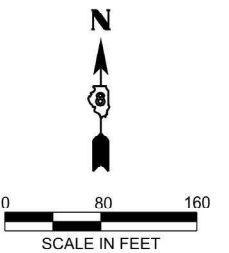
MODEL: Sheet
 FILE NAME: C:\OneDrive\Greene & Bradford Inc\G&B - Projects\2025\25101 - PTB 213-49 D8 Permit\Frma\ W0#1 GBI - Project\10 Special Pavement Markings\25101 - Special Pavement Markings\25101 - IL 15, N 18th St & IL 15 26th St.dgn



LOCATION # 49
 IL 15/MISSOURI AVE. @ N. 18TH ST. - EAST ST. LOUIS
 INTERSECTION ID # 1100



LOCATION # 50
 IL 15/MISSOURI AVE. @ N. 26TH ST. - EAST ST. LOUIS
 INTERSECTION ID # 1220



USER NAME = BenjaminBell	DESIGNED -	REVISED -
	DRAWN -	REVISED -
	CHECKED -	REVISED -
PLOT DATE = 9/5/2025	DATE -	REVISED -

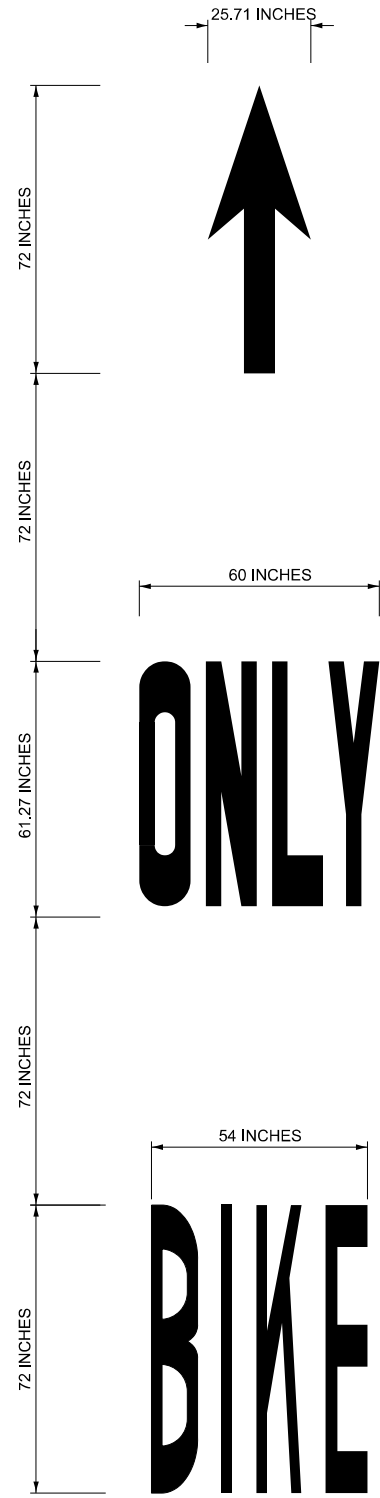
**STATE OF ILLINOIS
 DEPARTMENT OF TRANSPORTATION**

**LOCATION MAPS
 ST. CLAIR COUNTY**

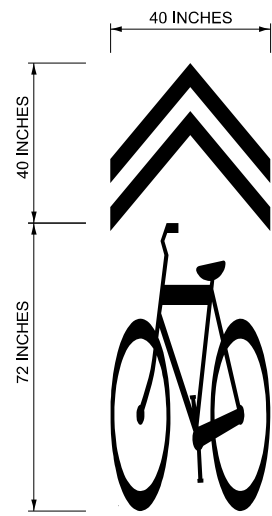
SCALE: SHEET 35 OF 37 SHEETS STA. TO STA.

F.A. RTE.	SECTION	COUNTY	TOTAL SHEETS	SHEET NO.
IL 15	D 8 HT PVMNT MRK RPR 26-07	ST. CLAIR	37	35
CONTRACT NO. 46670				
		ILLINOIS	FED. AID PROJECT	

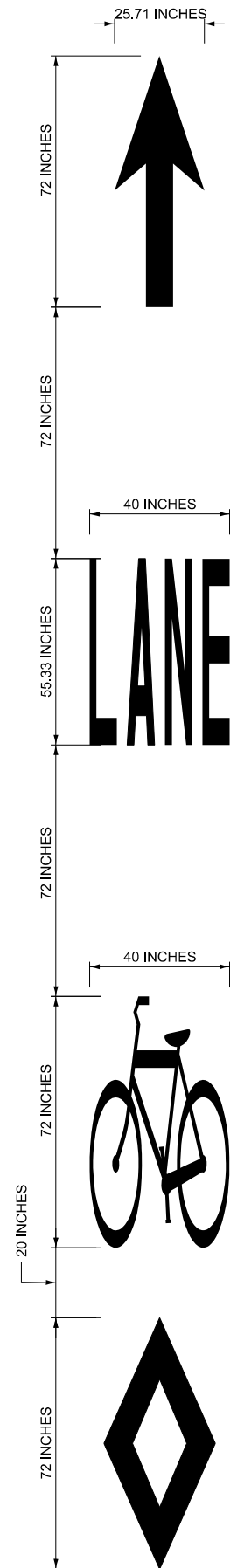
MODEL: Default
 FILE NAME: C:\OneDrive\Greene & Bradford Inc\G&B - Projects\2025\25101 - PTB 213-49 D8 Permit Prime\WOC#1 GBI - Project\10 Special Pavement Markings\25101 - Special Pavement Markings\dgn\36 Details.dgn



**IL 100
 BIKE TRAIL MARKING
 23.0 SQ. FT.**



**IL 100
 SHARED LANE MARKING
 12.7 SQ. FT.**



**CLARK BRIDGE
 BIKE TRAIL MARKING
 29.8 SQ. FT.**

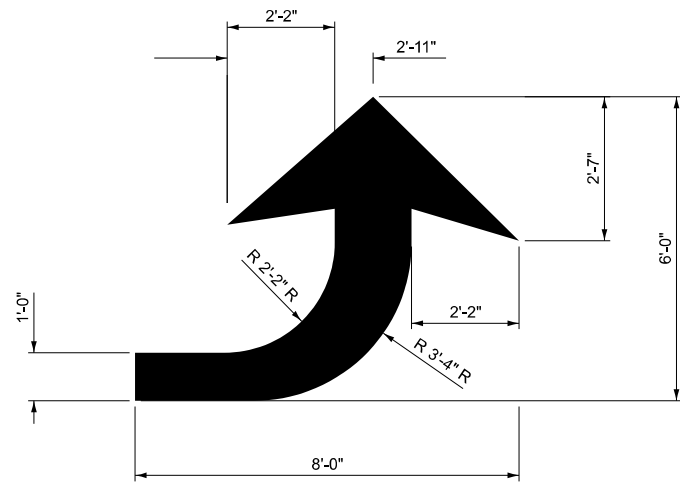
**STATE OF ILLINOIS
 DEPARTMENT OF TRANSPORTATION**

DETAIL PAVEMENT MARKINGS

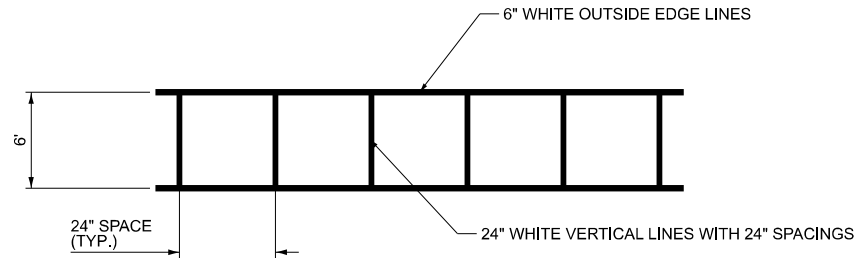
SCALE: SHEET 36 OF 37 SHEETS STA. TO STA.

F.A. RTE.	SECTION	COUNTY	TOTAL SHEETS	SHEET NO.
*	D 8 HT PVMNT MRK RPR 26-07	VARIOUS	37	36
*VARIOUS			CONTRACT NO. 46670	
		ILLINOIS	FED. AID PROJECT	

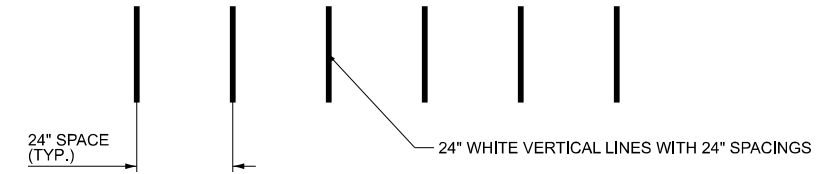
MODEL: Default
 FILE NAME: C:\OneDrive\Greene & Bradford Inc\G&B - Projects\2025\25101 - PTB 213-49 D8 Permit\Prime\WOC#1 GBI - Project\10 Special Pavement Markings\dgn\37 Details.dgn



LEFT ARROW
 REVERSE FOR RIGHT ARROW
 AREA = 15.6 SQ. FT. (1.47 m)
 (WHITE)



**TYPICAL LADDER
 CROSSWALKS**



**CONTINENTAL
 CROSSWALKS**

GENERAL NOTES:

1. USE LARGE ARROW SIZE FOR BOTH RURAL AND URBAN LOCATIONS. (SEE LAST PAGE OF SECTION 780x FOR SYMBOL TABLE).
2. ALL STOP BARS SHALL BE 4' IN ADVANCE OF ANY STYLE CROSSWALK.

USER NAME = BenjaminBell	DESIGNED -	REVISED -
	DRAWN -	REVISED -
	CHECKED -	REVISED -
PLOT DATE = 9/9/2025	DATE -	REVISED -

**STATE OF ILLINOIS
 DEPARTMENT OF TRANSPORTATION**

DETAIL PAVEMENT MARKINGS

SCALE: SHEET 37 OF 37 SHEETS STA. TO STA.

F.A. RTE.	SECTION	COUNTY	TOTAL SHEETS	SHEET NO.
*	D 8 HT PVMNT MRK RPR 26-07	VARIOUS	37	37
*VARIOUS			CONTRACT NO. 46670	
ILLINOIS		FED. AID PROJECT		