

STATE OF ILLINOIS
DEPARTMENT OF TRANSPORTATION

F.A.P. RTE.	SECTION	COUNTY	TOTAL SHEETS	SHEET NO.
690	(4,5)RS-3	WASHINGTON	10	1
		ILLINOIS	CONTRACT NO. 76N37	

FOR INDEX OF SHEETS, SEE SHEET NO. 2

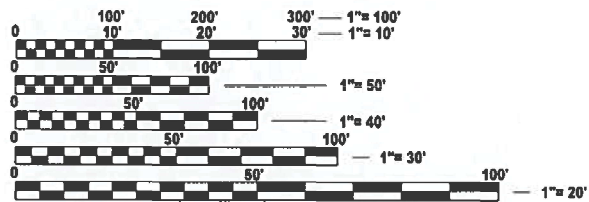
PROPOSED HIGHWAY PLANS

FAP ROUTE 690 (IL 160/IL 177)
SECTION (4,5)RS-3
PROJECT STP-YGXB(532)
DESIGNED OVERLAY
WASHINGTON COUNTY
C-98-077-20

TRAFFIC DATA

FROM CLINTON CO LINE TO NIGHTINGALE RD.
2023 ADT = 1750 (ACTUAL)
2026 ADT = 1800 (ESTIMATED)
2046 ADT = 2200 (ESTIMATED)
SU = 5.1%
MU = 5.1%

FROM NIGHTINGALE RD. TO WCL OF OKAWVILLE
2023 ADT = 1500 (ACTUAL)
2026 ADT = 1550 (ESTIMATED)
2046 ADT = 1900 (ESTIMATED)
SU = 4.0%
MU = 4.7%

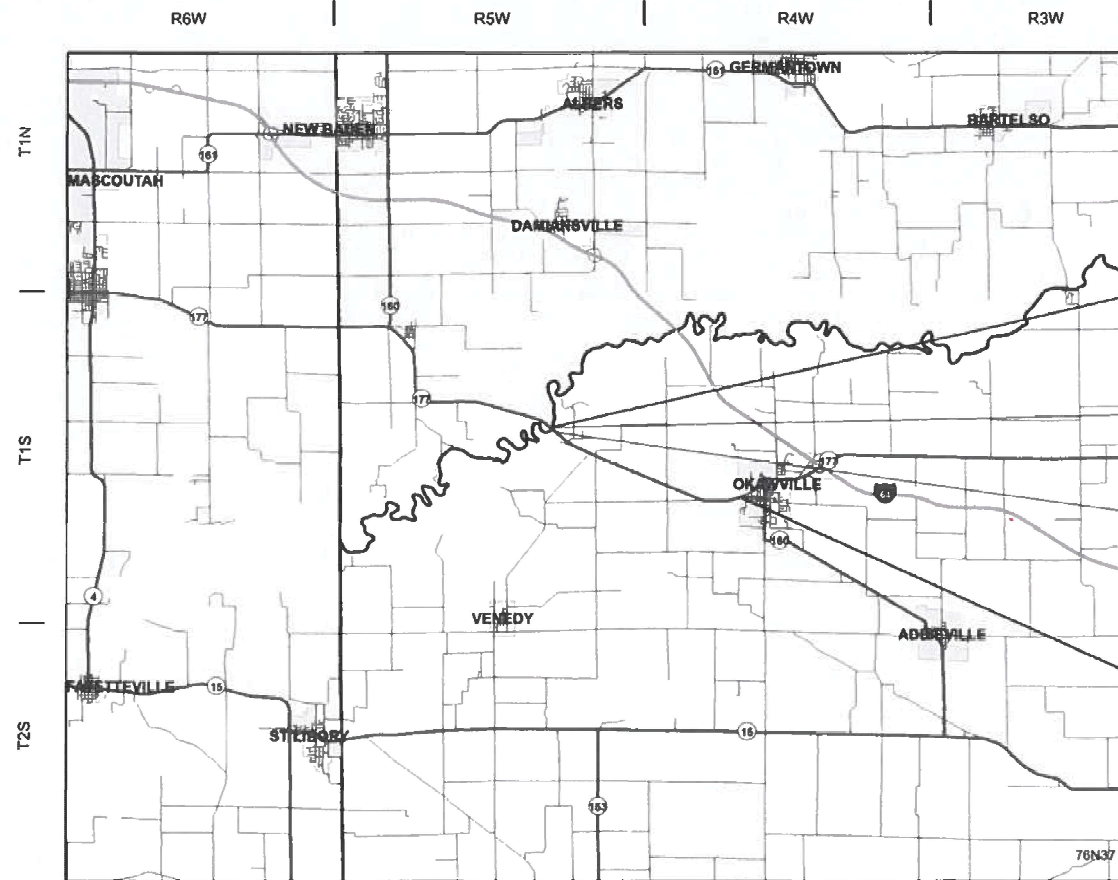


FULL SIZE PLANS HAVE BEEN PREPARED USING STANDARD ENGINEERING SCALES. REDUCED SIZED PLANS WILL NOT CONFORM TO STANDARD SCALES. IN MAKING MEASUREMENTS ON REDUCED PLANS, THE ABOVE SCALES MAY BE USED.

J.U.L.I.E.
JOINT UTILITY LOCATION INFORMATION FOR EXCAVATION
1-800-892-0123
OR 811

PROJECT ENGINEER: BILLIE OWEN
PROJECT MANAGER: MIKE BERG

CONTRACT NO. 76N37



BEGIN PROJECT
CLINTON COUNTY LINE
0.00 M.S.
LATITUDE: 38.45058
LONGITUDE: -98.62738

STRUCTURE OMISSION
095-0073
0.00 M.S. - 0.03 M.S.

STRUCTURE OMISSION
095-0074
0.11 M.S. - 0.22 M.S.

END PROJECT
WEST CITY LIMITS @ OKAWVILLE
4.03 M.S.
LATITUDE: 38.46075
LONGITUDE: -89.56009

GROSS LENGTH = 21,278 FT. = 4.03 MILE
NET LENGTH = 20,539 FT. = 3.89 MILE
NOT TO SCALE

D-98-063-20



LOCATION OF SECTION INDICATED THUS: - [thick black line] -

STATE OF ILLINOIS
DEPARTMENT OF TRANSPORTATION

SUBMITTED DEC 5 20 26
[Signature] REGIONAL ENGINEER
March 20 20 26
[Signature] ENGINEER OF DESIGN AND ENVIRONMENT
March 20 20 26
[Signature] DIRECTOR OF HIGHWAYS PROJECT IMPLEMENTATION

PRINTED BY THE AUTHORITY
OF THE STATE OF ILLINOIS

INDEX OF SHEETS

1. COVER SHEET
2. INDEX OF SHEETS, HIGHWAY STANDARDS, GENERAL NOTES, MIXTURE REQUIREMENTS & COMMITMENTS
- 3-4. SUMMARY OF QUANTITIES
- 5-6. TYPICAL SECTIONS
- 7-8. SCHEDULES OF QUANTITIES
9. LOCATION MAP
10. SURVEY MARKER DETAILS

HIGHWAY STANDARDS

000001-09	STANDARD SYMBOLS, ABBREVIATIONS AND PATTERNS
001006	DECIMAL OF AN INCH AND OF A FOOT
442101-09	CLASS B PATCHES
630001-13	STEEL PLATE BEAM GUARDRAIL
630301-09	SHOULDER WIDENING FOR TYPE 1 (SPECIAL) TERMINALS
642006-01	SHOULDER RUMBLE STRIPS, 8 INCH
701006-05	OFF-ROAD OPERATIONS, 2L, 2W 15' (4.5m) TO 24" (600mm) FROM PAVEMENT EDGE
701011-04	OFF-ROAD MOVING OPERATIONS, 2L, 2W, DAY ONLY
701201-05	LANE CLOSURE, 2L, 2W, DAY ONLY FOR SPEEDS ≥ 45MPH
701301-04	LANE CLOSURE, 2L, 2W SHORT TIME OPERATIONS
701306-04	LANE CLOSURE, 2L, 2W, SLOW MOVING OPERATIONS DAY ONLY, FOR SPEEDS ≥ 45 MPH
701311-03	LANE CLOSURE, 2L, 2W, MOVING OPERATIONS - DAY ONLY
701326-04	LANE CLOSURE, 2L, 2W, PAVEMENT WIDENING 45MPH OR MORE
701336-07	LANE CLOSURE, 2L, 2W, WORK AREAS IN SERIES FOR SPEEDS ≥ 45 MPH
701901-11	TRAFFIC CONTROL DEVICES
725001-01	OBJECT AND TERMINAL MARKERS
780001-05	TYPICAL PAVEMENT MARKINGS
781001-04	TYPICAL APPLICATIONS RAISED REFLECTIVE PAVEMENT MARKERS
782006-01	GUARDRAIL AND BARRIER WALL REFLECTOR MOUNTING DETAILS

GENERAL NOTES

1. UTILITIES KNOW TO HAVE FACILITIES WITHIN THE PROJECT AREA:

	ABOVE GROUND	BELOW GROUND
AMEREN ILLINOIS	X	X
CHARTER COMMUNICATIONS, INC.	X	X
CLEARWAVE FIBER LLC	X	X
FRONTIER COMMUNICATIONS	X	X
VILLAGE OF OKAWVILLE	X	X
WASHINGTON COUNTY WATER CO.		X

2. NO SURVEY WAS PERFORMED FOR THIS PROJECT AND THE PLANS ARE CREATED USING MICROFILM AND FIELD MEASUREMENTS.
3. THE PROPOSED PAVEMENT MARKING SHALL MATCH THE LOCATIONS OF THE EXISTING PAVEMENT MARKING, AS DIRECTED BY THE ENGINEER.
4. IF THE CONTRACTOR, FOR HIS CONSTRUCTION ACTIVITY, REMOVES TREES WITHIN THE RIGHT-OF-WAY LIMITS WHICH ARE NOT DESIGNATED ON THE PLANS FOR REMOVAL, I.E. IN ORDER TO GAIN ACCESS TO THE PROJECT SITE; IT WILL BE HIS RESPONSIBILITY TO REPLACE THE TREES AT A 1:1 RATIO. THE TREES WILL BE REPLACED WITH A 1 GALLON NATIVE ILLINOIS TREE SPECIES AND SHALL BE APPROVED BY THE ENGINEER. THE TREE REMOVAL AND TREE REPLACEMENT WILL BE AT THE CONTRACTOR'S EXPENSE, AND NO ADDITIONAL COMPENSATION WILL BE ALLOWED.
5. ALL TURF AREAS DISTURBED BY THE CONTRACTOR SHALL BE SEEDED WITH THE APPROPRIATE EROSION CONTROL, AS DIRECTED BY THE ENGINEER, AT THE CONTRACTOR'S EXPENSE.
6. ONLY SHORT TERM PAVEMENT MARKING REMOVAL FROM THE FINAL SURFACE SHALL BE PAID FOR AS "SHORT TERM PAVEMENT MARKING REMOVAL."
7. MATERIAL TRANSFER DEVICE (MTD) CAN OPERATE IN AN UNLOADED CONDITION WITH A MAXIMUM GROSS WEIGHT OF 40 TONS FOR THE FOLLOWING STRUCTURES:
 - 095-0073
 - 095-0074
 - 095-2434
 - 095-2435
 - 095-2436
 - 095-2437
 - 095-2438
 - 095-2439
8. NO TRAFFIC IS ALLOWED ON FINAL MILLED SURFACE.

9. TWO CHANGEABLE MESSAGE BOARDS SHALL BE REQUIRED FOR THIS PROJECT. THEY SHALL BE PLACED TWO WEEKS PRIOR TO ANY LANE CLOSURE AND SHALL REMAIN UP FOR THE DURATION OF THIS PROJECT. THE CHANGEABLE MESSAGE BOARDS SHALL BE PLACED ALONG IL 160/ IL 177 OR AT THE DIRECTION OF THE ENGINEER.

MIXTURE REQUIREMENTS

ROUTE	FAP 690
SECTION	(4.5)RS-3
COUNTY	Washington
CONTRACT	76N37

ADT (CONSTRUCTION YR)	2100
MU %	5.7
SU%	5.2
20 YR. ESAL'S:	0.79

DESCRIPTION:	Designed Overlay - IL 160/ IL 177 from Clinton County Line to WCL of Okawville
--------------	--

MIXTURE USE	BINDER	SURFACE	SHOULDER ≤ 8 FEET WIDE	
			SHOULDER (lower)	SHOULDER (surface)
AC/PG	PG 64-22	PG 64-22	PG 64-22	PG 64-22
DESIGN AIR VOIDS	4.0% @ Ndes = 70	4.0% @ Ndes = 70	4.0% @ Ndes = 30	4.0% @ Ndes = 30
MIX COMPOSITION (Gradation)	IL 19.0	IL 9.5	IL 19.0L	IL 9.5L
FRICITION AGG	MIXTURE "B"	MIXTURE "C"		
QUALITY MGMT PROGRAM	QCP	QCP	QC/QA	QC/QA
MatTranDev Required?	YES	YES	NO	NO

MIXTURE USE	BINDER	SURFACE	SHOULDER (lower)	SHOULDER (surface)
AC/PG	PG 64-22	PG 64-22		
DESIGN AIR VOIDS	4.0% @ Ndes = 70			
MIX COMPOSITION (Gradation)	IL 19.0			
FRICITION AGG	MIXTURE "B"			
QUALITY MGMT PROGRAM	QC/QA			
MatTranDev Required?	NO			

Plan quantities for Hot-Mix Asphalt items are calculated using a unit weight of 112 lb/sq yd/ in (59.8 kg/sq m/25 mm thickness). Any QCP Pay Item that has a quantity of 1600 tons or less will have sublots each of which will be half of the Plan Quantity or half of the Adjusted Quantity by the Resident Engineer/Technician.

COMMITMENTS

NONE

STATE OF ILLINOIS
DEPARTMENT OF TRANSPORTATION

INDEX OF SHEETS, HIGHWAY STANDARDS
GENERAL NOTES, MIXTURE REQUIREMENTS & COMMITMENTS

F.A.P. RTE.	SECTION	COUNTY	TOTAL SHEETS	SHEET NO.
690	(4.5)RS-3	WASHINGTON	10	2
CONTRACT NO. 76N37				
ILLINOIS			FED. AID PROJECT	

SCALE: SHEET 1 OF 1 SHEETS STA. TO STA.

CODE NO.	ITEM	UNIT	TOTAL QUANTITY	CONSTR. CODE
				80% FEDERAL
				20% STATE
				ROADWAY
				0005
				RURAL
20200600	EXCAVATING AND GRADING EXISTING SHOULDER	UNIT	386	386
40600290	BITUMINOUS MATERIALS (TACK COAT)	POUND	40053	40053
40600370	LONGITUDINAL JOINT SEALANT	FOOT	20539	20539
40600405	MATERIAL TRANSFER DEVICE	TON	10543.4	10543.4
40603085	HOT-MIX ASPHALT BINDER COURSE, IL-19.0, N70	TON	6326.1	6326.1
40604052	HOT-MIX ASPHALT SURFACE COURSE, IL-9.5, MIX "C", N70	TON	4217.3	4217.3
44000164	HOT-MIX ASPHALT SURFACE REMOVAL, 3 3/4"	SQ YD	50207	50207
44000500	COMBINATION CURB AND GUTTER REMOVAL	FOOT	365	365
44004250	PAVED SHOULDER REMOVAL	SQ YD	5374	5374
44200050	WELDED WIRE REINFORCEMENT	SQ YD	314	314
44201007	CLASS B PATCHES, TYPE II, 13 INCH	SQ YD	112	112
44201011	CLASS B PATCHES, TYPE III, 13 INCH	SQ YD	43	43
44201013	CLASS B PATCHES, TYPE IV, 13 INCH	SQ YD	272	272
44201299	DOWEL BARS 1 1/2"	EACH	245	245
44213200	SAW CUTS	FOOT	2262	2262

CODE NO.	ITEM	UNIT	TOTAL QUANTITY	CONSTR. CODE
				80% FEDERAL
				20% STATE
				ROADWAY
				0005
				RURAL
44213204	TIE BARS 3/4"	EACH	194	194
48102100	AGGREGATE WEDGE SHOULDER, TYPE B	TON	1199	1199
48203029	HOT-MIX ASPHALT SHOULDERS, 8"	SQ YD	18421	18421
* 63000007	STEEL PLATE BEAM GUARDRAIL, TYPE B, 6 FOOT POSTS	FOOT	2138	2138
* 63100167	TRAFFIC BARRIER TERMINAL, TYPE 1 (SPECIAL) TANGENT	EACH	8	8
63200310	GUARDRAIL REMOVAL	FOOT	2338	2338
64200108	SHOULDER RUMBLE STRIPS, 8 INCH	FOOT	41078	41078
67000400	ENGINEER'S FIELD OFFICE, TYPE A	CAL MO	5	5
67100100	MOBILIZATION	L SUM	1	1
70100450	TRAFFIC CONTROL AND PROTECTION, STANDARD 701201	L SUM	1	1
70100460	TRAFFIC CONTROL AND PROTECTION, STANDARD 701306	L SUM	1	1
70100500	TRAFFIC CONTROL AND PROTECTION, STANDARD 701326	L SUM	1	1
70100600	TRAFFIC CONTROL AND PROTECTION, STANDARD 701336	L SUM	1	1
70107025	CHANGEABLE MESSAGE SIGN	CAL DA	110	110

* SPECIALTY ITEM

MODEL: Summary1 (Sheet)
FILE NAME: c:\pwworking\dmurray\dwg\085207\085207-sh-SQC.dgn

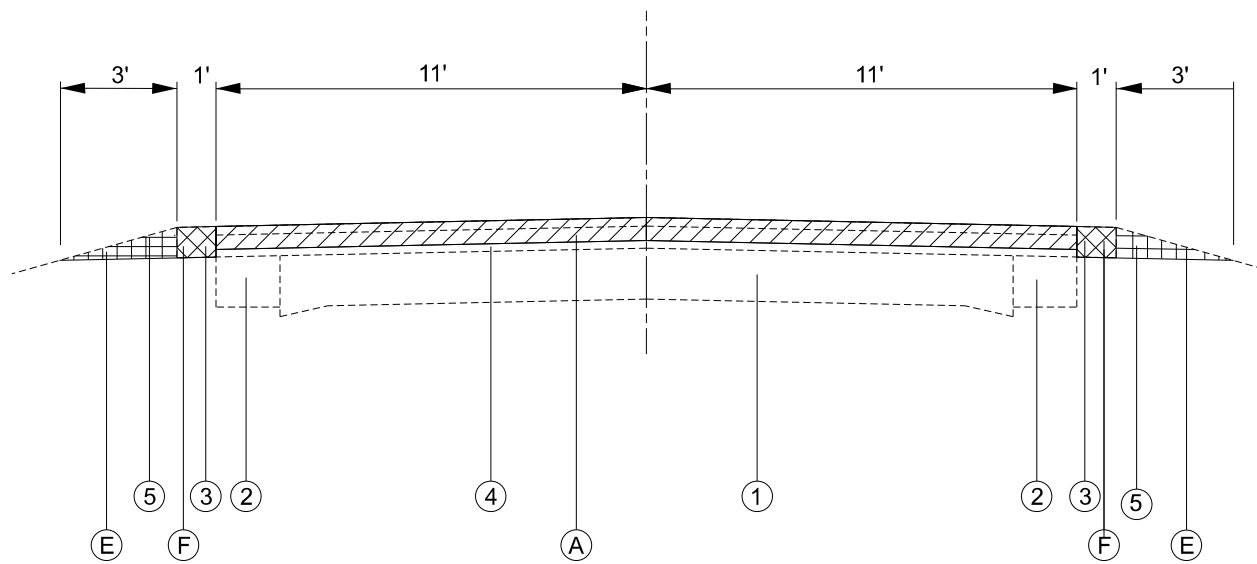
USER NAME = Diana.Murray	DESIGNED -	REVISED -
	DRAWN -	REVISED -
	CHECKED -	REVISED -
PLOT DATE = 12/6/2025	DATE -	REVISED -

**STATE OF ILLINOIS
DEPARTMENT OF TRANSPORTATION**

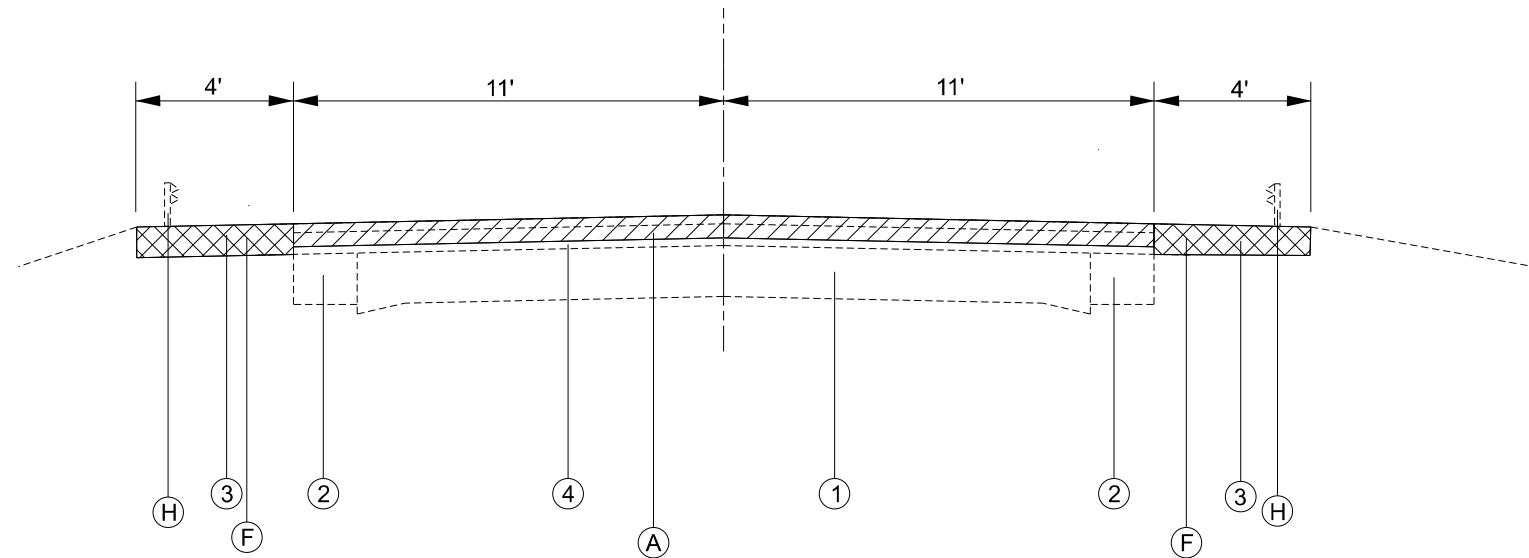
SUMMARY OF QUANTITIES

SCALE: SHEET 1 OF 1 SHEETS STA. TO STA.

F.A.P. RTE.	SECTION	COUNTY	TOTAL SHEETS	SHEET NO.
690	(4,5)RS-3	WASHINGTON	10	3
CONTRACT NO. 76N37				
ILLINOIS FED. AID PROJECT				



EXISTING TYPICAL SECTION
 M.S. 0.03 TO M.S. 0.11
 M.S. 0.22 TO M.S. 0.24
 M.S. 0.27 TO M.S. 0.59
 M.S. 0.79 TO M.S. 4.03



EXISTING TYPICAL SECTION
 M.S. 0.24 TO M.S. 0.27
 M.S. 0.59 TO M.S. 0.79

LEGEND

- ① EXISTING PAVEMENT 9"-6"-9"
- ② EXISTING HOT-MIX ASPHALT WIDENING
- ③ EXISTING HOT-MIX ASPHALT SHOULDER
- ④ EXISTING RESURFACING, VARIES
- ⑤ EXISTING AGGREGATE SHOULDER
- (A) PROPOSED HOT-MIX ASPHALT REMOVAL, 3¾"
- (B) PROPOSED HOT-MIX ASPHALT BINDER, 2¼"
- (C) PROPOSED HOT-MIX ASPHALT SURFACE, 1½"
- (D) PROPOSED BITUMINOUS MATERIALS (TACK COAT)
- (E) PROPOSED EXCAVATING AND GRADING EXISTING SHOULDER, 8"
- (F) PROPOSED PAVED SHOULDER REMOVAL, 8"
- (G) PROPOSED HOT-MIX ASPHALT SHOULDER, 8"
- (H) PROPOSED GUARDRAIL REMOVAL
- (I) PROPOSED STEEL PLATE BEAM GUARDRAIL, 6 POSTS
- (J) PROPOSED AGGREGATE WEDGE, TYPE B
- (K) PROPOSED THERMOPLASTIC PAVEMENT MARKING, 6"

MODEL: Typical (Sheet)
 FILE NAME: c:\p\work\76n37\murray\082077\082077\082077-shr-typical.dgn

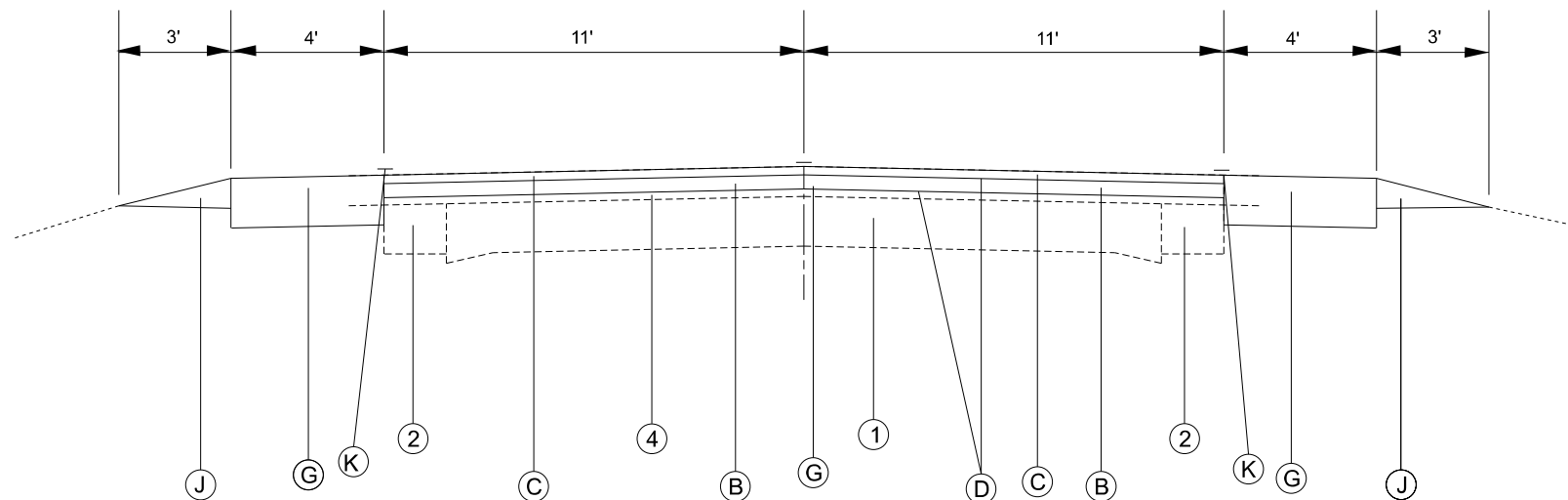
USER NAME = Diana.Murray	DESIGNED -	REVISED -
	DRAWN -	REVISED -
	CHECKED -	REVISED -
PLOT DATE = 12/8/2025	DATE -	REVISED -

STATE OF ILLINOIS
 DEPARTMENT OF TRANSPORTATION

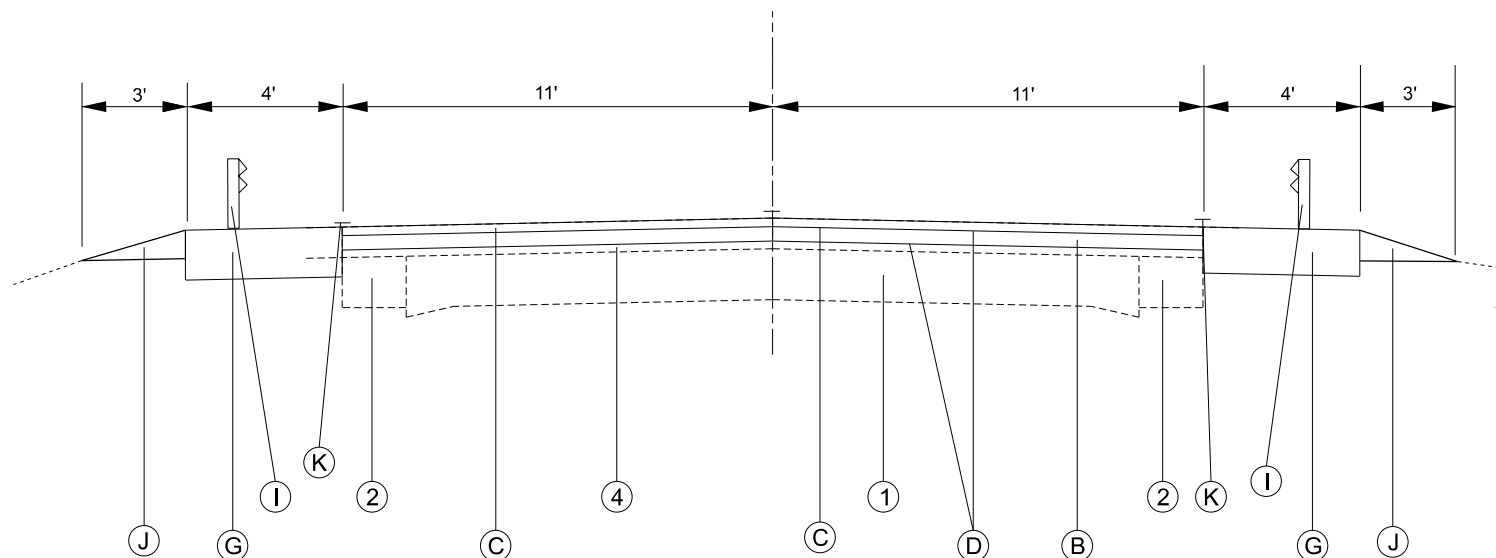
TYPICAL SECTIONS

SCALE: SHEET 1 OF 2 SHEETS STA. TO STA.

F.A.P. RTE.	SECTION	COUNTY	TOTAL SHEETS	SHEET NO.
690	(4,5)RS-3	WASHINGTON	10	5
CONTRACT NO. 76N37				
ILLINOIS FED. AID PROJECT				



PROPOSED TYPICAL SECTION
 M.S. 0.03 TO M.S. 0.11
 M.S. 0.22 TO M.S. 0.24
 M.S. 0.27 TO M.S. 0.59
 M.S. 0.79 TO M.S. 4.03



PROPOSED TYPICAL SECTION
 M.S. 0.24 TO M.S. 0.27
 M.S. 0.59 TO M.S. 0.79

LEGEND

- ① EXISTING PAVEMENT 9"-6"-9"
- ② EXISTING HOT-MIX ASPHALT WIDENING
- ③ EXISTING HOT-MIX ASPHALT SHOULDER
- ④ EXISTING RESURFACING, VARIES
- ⑤ EXISTING AGGREGATE SHOULDER
- (A) PROPOSED HOT-MIX ASPHALT REMOVAL, 3¾"
- (B) PROPOSED HOT-MIX ASPHALT BINDER, 2¼"
- (C) PROPOSED HOT-MIX ASPHALT SURFACE, 1½"
- (D) PROPOSED BITUMINOUS MATERIALS (TACK COAT)
- (E) PROPOSED EXCAVATING AND GRADING EXISTING SHOULDER, 8"
- (F) PROPOSED PAVED SHOULDER REMOVAL, 8"
- (G) PROPOSED HOT-MIX ASPHALT SHOULDER, 8"
- (H) PROPOSED GUARDRAIL REMOVAL
- (I) PROPOSED STEEL PLATE BEAM GUARDRAIL, 6 POSTS
- (J) PROPOSED AGGREGATE WEDGE, TYPE B
- (K) PROPOSED THERMOPLASTIC PAVEMENT MARKING, 6"

MODEL: Typical=2 (Sheet)
 FILE NAME: c:\pwworking\dmurray\dwg\065207\0876N37-shr-typical.dgn

USER NAME = Diana.Murray	DESIGNED -	REVISED -
	DRAWN -	REVISED -
	CHECKED -	REVISED -
PLOT DATE = 12/5/2025	DATE -	REVISED -

**STATE OF ILLINOIS
 DEPARTMENT OF TRANSPORTATION**

TYPICAL SECTIONS

SCALE: SHEET 2 OF 2 SHEETS STA. TO STA.

F.A.P. RTE.	SECTION	COUNTY	TOTAL SHEETS	SHEET NO.
690	(4,5)RS-3	WASHINGTON	10	6
CONTRACT NO. 76N37				
ILLINOIS FED. AID PROJECT				

SHOULDER SCHEDULE									
MILE STATION TO MILE STATION	DIMENSION			PAVED SHOULDER REMOVAL	EXCAVATING AND GRADING EXISTING SHOULDER	BITUMINOUS MATERIALS (TACK COAT)	HMA SHOULDERS 8"	AGGREGATE WEDGE SHOULDER TYPE B	SHOULDER RUMBLE STRIPS, 8"
	WIDTH								
	FOOT	UNIT	POUND						
SN 095-0073 (BRIDGE OMISSION)									
0.03	-	0.11	4	94	8	127	375.5	24.6	845
SN 095-0074 (BRIDGE OMISSION)									
0.22	-	0.24	4	23	2	32	93.9	6.2	211
0.24		0.27	4	141		48	140.8	9.2	317
0.27		0.59	4	375	34	507	1501.9	98.6	3379
0.59		0.79	4	939		317	938.7	61.6	2112
0.79		4.03	4	3802	342	5132	15206.4	997.9	34214
TOTAL:				5374	386	6163	18258	1199	41078

RESURFACING SCHEDULE								
MILE STATION TO MILE STATION	DIMENSION		HMA SURFACE REMOVAL 3.75 "	BITUMINOUS MATERIALS (TACK COAT)	LONGITUDINAL JOINT SEALANT	HMA BINDER COURSE MIX B N70	HMA SURFACE COURSE, MIX C, N70	
	WIDTH							
	FOOT	SQ YD						POUND
SN 095-0073 (BRIDGE OMISSION)								
0.03	-	0.11	22	1033	697	422	130.1	86.7
SN 095 - 0074 (BRIDGE OMISSION)								
0.22	-	4.03	22	49174	33193	20117	6196.0	4130.6
TOTAL:				50207	33890	20539	6326.1	4217.3

GUARDRAIL SCHEDULE						
MILE STATION	EB/WB	STEEL PLATE BEAM GUARDRAIL, TYPE B, 6 FOOT POSTS	TRAFFIC BARRIER TERMINAL, TYPE 1, (SPECIAL) TANGENT	GUARDRAIL REFLECTORS, TYPE A	TERMINAL MARKER - DIRECT APPLIED	GUARDRAIL REMOVAL
0.24	EB	50	2	1	2	100
0.25	WB	62.5	2	1	2	113
0.59	EB	1000	2	14	2	1050
0.59	WB	1025	2	14	2	1075
TOTAL:		2138	8	30	8	2338

CURB AND GUTTER SCHEDULE				
MILE STATION	MILE STATION	EB/WB	CURB AND GUTTER REMOVAL	HMA SHOULDERS 8"
				FOOT
CATTLE PENN RD.	1.03	EB	40	18
CATTLE PENN RD.	1.03	EB	40	18
BOTTOM PRAIRIE RD.	2.55	EB	40	18
BOTTOM PRAIRIE RD.	2.55	EB	45	20
BOTTOM PRAIRIE RD.	2.55	WB	35	16
BOTTOM PRAIRIE RD.	2.55	WB	50	22
NIGHTINGALE	3.31	EB	50	22
NIGHTINGALE	3.31	EB	65	29
TOTAL:			365	163

PAVEMENT PATCHING SCHEDULE										
MILE STATION	LOCATION	DIMENSIONS		CLASS B PATCHES- 13"			SAW CUTS	DOWEL BARS 1 1/2"	TIE BARS 3/4", NO 6	WELDED WIRE REINFORCEMENT
		LENGTH	WIDTH	TYPE II	TYPE III	TYPE IV				
0.20	EB	15	11			19		57	16	19
0.20	WB	15	11			19		67	16	19
0.20	WB	6	11	8				40	16	
0.30	WB	6	11	8				40	16	
0.50	EB	6	11	8				40	16	
0.60	EB	140	6			94		442	10	93
0.66	EB - SN 095-2439/2438	60	11			74		202	16	40
0.66	WB - SN 095-2439/2439	60	11			74		202	16	40
0.90	WB	12	11	15				58	16	
1.30	EB	6	11	8				18	16	
1.90	EB	6	11	8				18	16	
2.20	WB	6	11	8				18	16	
3.06	EB - SN 095-2436	12	11	15				36	16	
3.06	WB - SN 095-2436	12	11	15				36	16	
SUBTOTAL				93	38	242	1274	218	173	280
20% SUBTOTAL*				19	5	30	153	27	21	34
TOTAL				112	43	272	1427	245	194	314

*NOTE: AN ADDITIONAL 20% HAS BEEN ADDED TO THE FINAL PATCHING QUANTITY TO ALLOW FOR WINTER DAMAGE.

MODEL: Schedules-2 [Sheet]
FILE NAME: c:\pwworking\dmurray\0852077\0876N37-shl-schedules.dgn

USER NAME = Diana.Murray	DESIGNED -	REVISED -
	DRAWN -	REVISED -
	CHECKED -	REVISED -
PLOT DATE = 12/8/2025	DATE -	REVISED -

STATE OF ILLINOIS
DEPARTMENT OF TRANSPORTATION

SCHEDULE OF QUANTITIES

SCALE: SHEET 1 OF 2 SHEETS STA. TO STA.

F.A.P. RTE.	SECTION	COUNTY	TOTAL SHEETS	SHEET NO.
690	(4.5)RS-3	WASHINGTON	10	7
CONTRACT NO. 76N37				
ILLINOIS FED. AID PROJECT				

PAVEMENT MARKING SCHEDULE

MILE STATION TO MILE STATION	LENGTH	SHORT TERM PAVEMENT MARKING	TEMPORARY PAVEMENT MARKING				RAISED REFLECTIVE PAVEMENT MARKER REMOVAL	RAISED REFLECTIVE PAVEMENT MARKERS CRYSTAL	THERMOPLASTIC PAVEMENT MARKING				SHORT TERM PAVEMENT MARKING REMOVAL	
		4" SKIP-DASH YELLOW	6" SOLID WHITE	6" SKIP-DASH YELLOW	NO PASSING ZONE				6" SOLID WHITE	6 SKIP-DASH YELLOW	NO PASSING ZONE			
					DIR	FOOT					DIR	FOOT		
FT	FOOT	FOOT	FOOT	FOOT	DIR	FOOT	EACH	EACH	FOOT	FOOT	DIR	FOOT	SQ FT	
SN 095-0073 (BRIDGE OMISSION)														
0.03	-	0.11	422	160	845	110			5	5	845	110		14
SN 095-0074 (BRIDGE OMISSION)														
0.22	-	0.26	211	80	422	60			3	3	422	60		7
0.26	-	0.41	792	320	1584	200	EB	792	10	10	1584	200	EB	792
0.41	-	0.43	106	40	106	30	EB	106	1	1	106	30	EB	106
0.43	-	0.47	211	80	422	60	EB	211	3	3	422	60	EB	211
0.47	-	0.49	106	40	211		BOTH	211	1	1	211		BOTH	211
0.49	-	0.74	1320	480	2640	330	WB	1320	17	17	2640	330	WB	1320
0.74	-	0.85	581	240	581	150			7	7	581	150		20
0.85	-	0.87	106	40	106	30			1	1	106	30		4
0.87	-	0.88	53	40	106	20			1	1	106	20		4
0.88	-	0.89	53	40	53	20			1	1	53	20		4
0.89	-	0.98	475	200	950	120			6	6	950	120		17
0.98	-	0.99	53	40	53	20			1	1	53	20		4
0.99	-	1.00	53	40		20			1	1		20		4
1.00	-	1.10	528	200	1056	140			7	7	1056	140		17
1.10	-	1.25	792	320	1584	200	EB	792	10	10	1584	200	EB	792
1.25	-	1.47	1162	440	2323	300	WB	1162	15	15	2323	300	WB	1162
1.47	-	2.49	5386	1960	10771	1350			67	67	10771	1350		164
2.49	-	2.51	106	40	211	30	EB	106	1	1	211	30	EB	106
2.51	-	2.52	50	40	50	20	EB	50	1	1	50	20	EB	50
2.52	-	2.52	3	40		10	EB	3				10	EB	3
2.52	-	2.53	53	40	106	20	EB	53	1	1	106	20	EB	53
2.53	-	2.64	581	240	1162	150	EB	581	7	7	1162	150	EB	581
2.64	-	2.70	317	120	634	80			4	4	634	80		10
2.70	-	2.79	475	200	950	120	WB	475	6	6	950	120	WB	475
2.79	-	2.84	264	120	528		BOTH	528	3	3	528		BOTH	528
2.84	-	2.92	422	160	845	110	EB	422	5	5	845	110	EB	422
2.92	-	3.00	422	160	845	110			5	5	845	110		14
3.00	-	3.04	211	80	422	60	WB	211	3	3	422	60	WB	211
3.04	-	3.13	475	200	950		BOTH	950	6	6	950		BOTH	950
3.13	-	3.23	528	200	1056	140	EB	528	7	7	1056	140	EB	528
3.23	-	3.24	53	40	106		BOTH	106	1	1	106		BOTH	106
3.24	-	3.25	53	40	53		BOTH	106	1	1	53		BOTH	106
3.25	-	3.25	21	40	21	10	WB	21			21	10	WB	21
3.25	-	3.46	1088	400	2175	280	WB	1088	14	14	2175	280	WB	1088
3.46	-	3.61	792	320	1584	200			10	10	1584	200		27
3.61	-	3.70	475	200	950	120	EB	475	6	6	950	120	EB	475
3.70	-	3.78	422	160	845		BOTH	845	5	5	845		BOTH	845
3.78	-	3.93	792	320	1584	200	WB	792	10	10	1584	200	WB	792
3.93	-	3.99	317	120	634	80			4	4	634	80		10
3.99	-	4.01	106	40	106	30			1	1	106	30		4
4.01	-	4.03	106	40	211	30		211	1	1	211	30		4
SUBTOTAL			8120	39840	4960			12144	256	256	39840	4960		12144
TOTAL			8120	39840	4960			12144	256	256	39840	4960		12144

MODEL: Schedules (Sheet)
FILE NAME: c:\pwworking\murray\murray\0852077\0876N37-shl-schedules.dgn

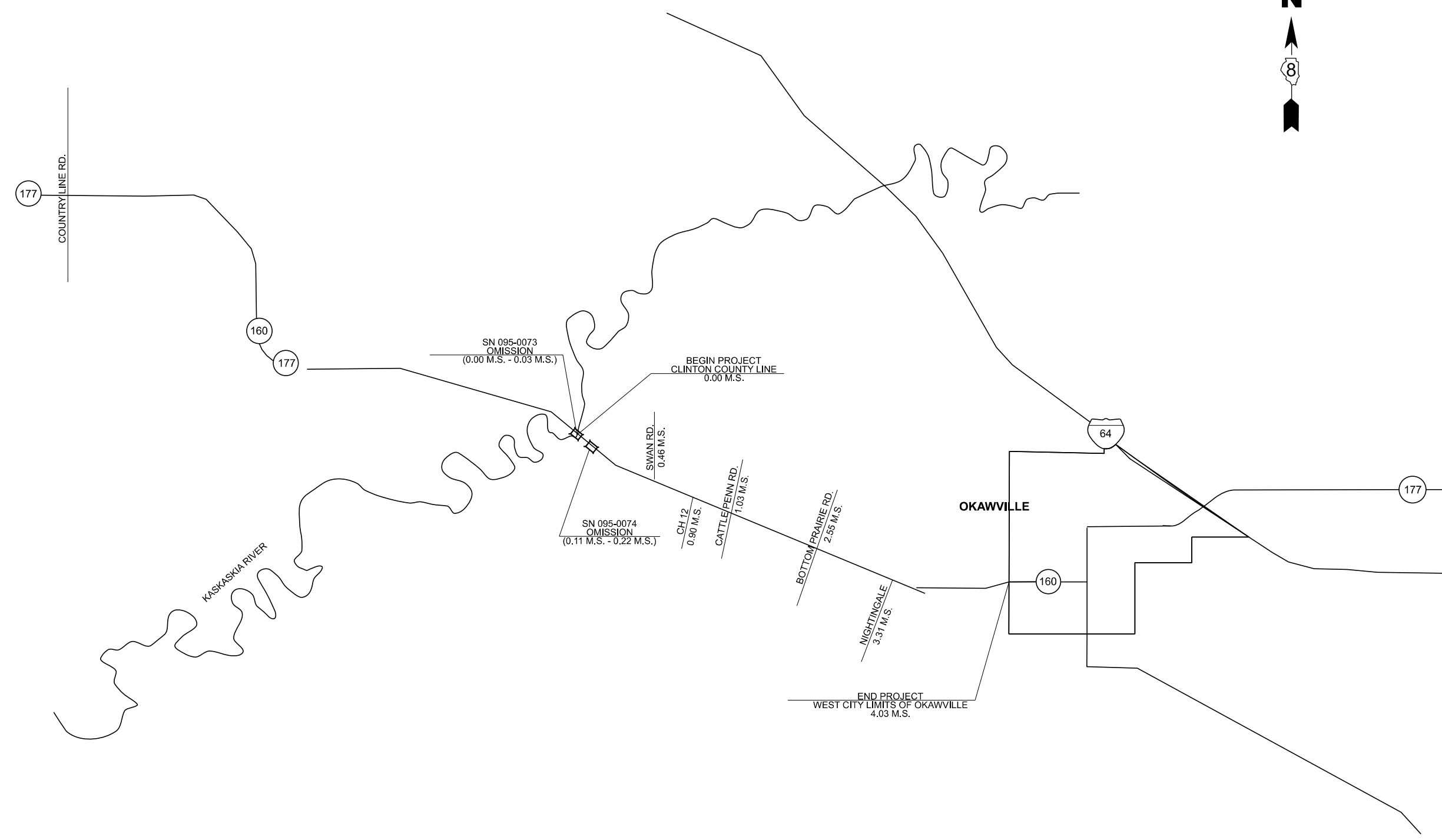
USER NAME = Diana.Murray	DESIGNED -	REVISED -
	DRAWN -	REVISED -
	CHECKED -	REVISED -
PLOT DATE = 12/5/2025	DATE -	REVISED -

**STATE OF ILLINOIS
DEPARTMENT OF TRANSPORTATION**

SCHEDULE OF QUANTITIES

SCALE: SHEET 2 OF 2 SHEETS STA. TO STA.

F.A.P. RTE.	SECTION	COUNTY	TOTAL SHEETS	SHEET NO.
690	(4,5)RS-3	WASHINGTON	10	8
CONTRACT NO. 76N37				
ILLINOIS FED. AID PROJECT				



NOT TO SCALE

MODEL: Detail [Sheet]
 FILE NAME: c:\p\work\okawville\murray\ia\065207\0376N37-sh1-details.dgn

USER NAME = Diana.Murray	DESIGNED -	REVISED -
	DRAWN -	REVISED -
	CHECKED -	REVISED -
PLOT DATE = 12/5/2025	DATE -	REVISED -

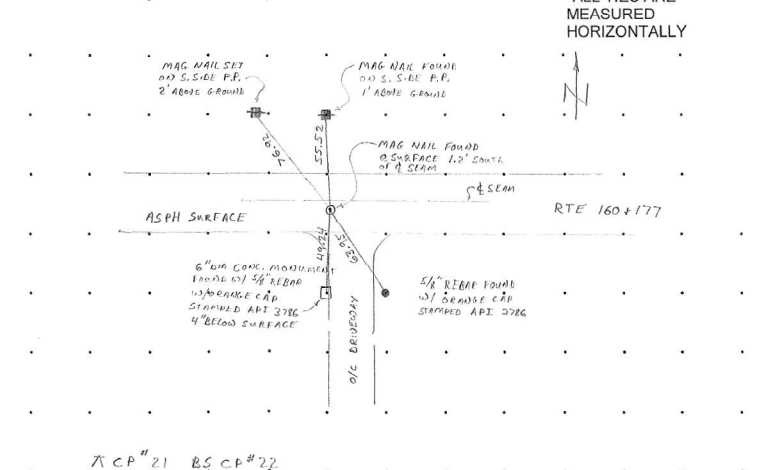
**STATE OF ILLINOIS
 DEPARTMENT OF TRANSPORTATION**

LOCATION MAP

SCALE: SHEET 1 OF 1 SHEETS STA. TO STA.

F.A.P. RTE.	SECTION	COUNTY	TOTAL SHEETS	SHEET NO.
690	(4.5)RS-3	WASHINGTON	10	9
CONTRACT NO. 76N37				
ILLINOIS FED. AID PROJECT				

Section: FAP 690 (IL160/IL177) Job: D-98-063-20/C-98-077-20 Contract#: 76N37
 WASHINGTON COUNTY IL FROM CLINTON CO LINE TO 0.1 mi E OF R&R RD SECTION (4,5,109) RS-3
 Point#: 101 Description: MAG NAIL FOUND Crew: MB/CW Date: 3-19-25
 FROM PLAT RECORDED CAB 3 SLIDE 129

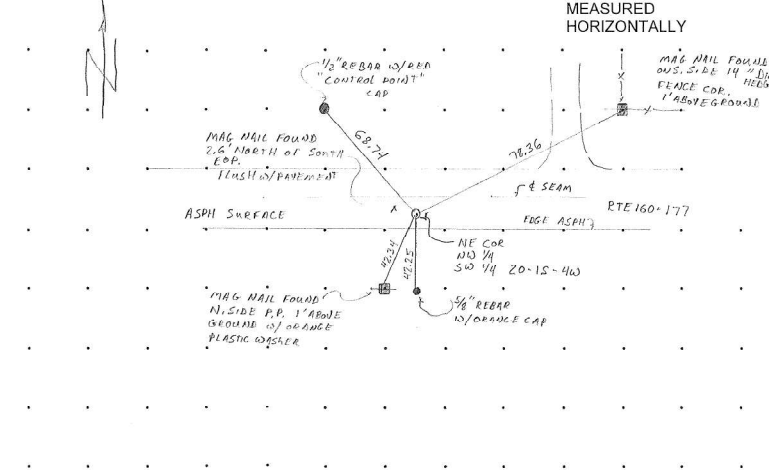


*ALL TIES ARE MEASURED HORIZONTALLY

6\"/>

1279-114-0001
HA HENEGHAN AND ASSOCIATES, P.C.
 1004 STATE HWY. 16
 JERSEYVILLE, ILLINOIS 62052
 PHONE NO. (618) 498-6418
 FAX NO. (618) 498-6410
 ENGINEERS-SURVEYORS www.haengr.com
 DESIGN FIRM NUMBER 184-002692, EXPIRES APRIL 30, 2027

Section: FAP 690 (IL160/IL177) Job: D-98-063-20/C-98-077-20 Contract#: 76N37
 WASHINGTON COUNTY IL FROM CLINTON CO LINE TO 0.1 mi E OF R&R RD SECTION (4,5,109) RS-3
 Point#: 102 Description: MAG NAIL FOUND Crew: MB/CW Date: 3-19-25
 FROM PLAT RECORDED CAB 3 SLIDE 129

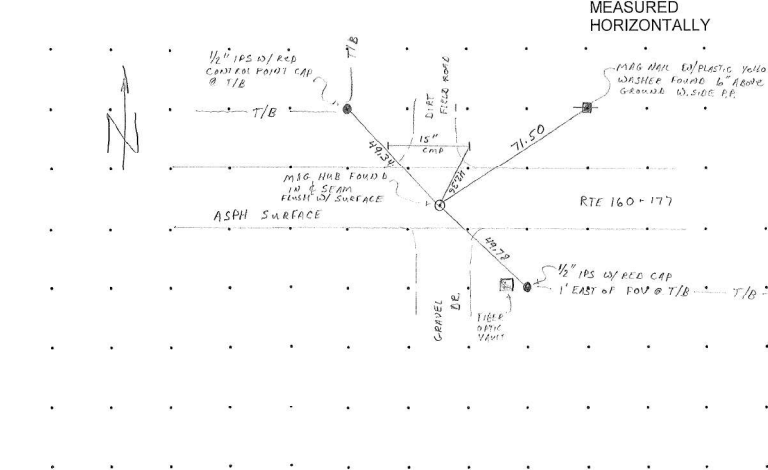


*ALL TIES ARE MEASURED HORIZONTALLY

1/2\"/>

1279-114-0001
HA HENEGHAN AND ASSOCIATES, P.C.
 1004 STATE HWY. 16
 JERSEYVILLE, ILLINOIS 62052
 PHONE NO. (618) 498-6418
 FAX NO. (618) 498-6410
 ENGINEERS-SURVEYORS www.haengr.com
 DESIGN FIRM NUMBER 184-002692, EXPIRES APRIL 30, 2027

Section: FAP 690 (IL160/IL177) Job: D-98-063-20/C-98-077-20 Contract#: 76N37
 WASHINGTON COUNTY IL FROM CLINTON CO LINE TO 0.1 mi E OF R&R RD SECTION (4,5,109) RS-3
 Point#: 111 Description: MAG NAIL @ Crew: MB/CW Date: 3-19-25
 PASSAGE W/ 1/4\"/>



*ALL TIES ARE MEASURED HORIZONTALLY

1/2\"/>

1279-114-0001
HA HENEGHAN AND ASSOCIATES, P.C.
 1004 STATE HWY. 16
 JERSEYVILLE, ILLINOIS 62052
 PHONE NO. (618) 498-6418
 FAX NO. (618) 498-6410
 ENGINEERS-SURVEYORS www.haengr.com
 DESIGN FIRM NUMBER 184-002692, EXPIRES APRIL 30, 2027

MODEL: Detail-2 (Sheet)
 FILE NAME: c:\p\work\washingtonmurray\04065207\0876N37-sh-detailed.dgn

USER NAME = Diana.Murray	DESIGNED -	REVISED -
	DRAWN -	REVISED -
	CHECKED -	REVISED -
PLOT DATE = 10/15/2025	DATE -	REVISED -

STATE OF ILLINOIS
 DEPARTMENT OF TRANSPORTATION

SURVEY MARKER DETAILS

SCALE: SHEET 1 OF 1 SHEETS STA. TO STA.

F.A.P. RTE.	SECTION	COUNTY	TOTAL SHEETS	SHEET NO.
690	(4,5)RS-3	WASHINGTON	10	10
CONTRACT NO. 76N37				
ILLINOIS FED. AID PROJECT				