



## INDEX OF SHEETS

- 1 COVER SHEET
- 2 INDEX OF SHEETS, STANDARDS, GENERAL NOTES, AND COMMITMENTS
- 3 SUMMARY OF QUANTITIES
- 4 TRAFFIC CONTROL AND PROTECTION, STANDARD 701401 (SPECIAL)
- 5 TRAFFIC CONTROL AND PROTECTION, STANDARD (SPECIAL)
- 6-10 STRUCTURE DETAILS - SN 060-0215

## HIGHWAY STANDARDS

- 000001-09 STANDARD SYMBOLS, ABBREVIATIONS AND PATTERNS
- 001006 DECIMAL OF AN INCH AND OF A FOOT
- 701101-05 OFF-RD OPERATIONS, MULTILANE, 15' (4.5 M) TO 24" (600 MM) FROM PAVEMENT EDGE
- 701106-02 OFF-RD OPERATIONS, MULTILANE, MORE THAN 15' (4.5 M) AWAY
- 701400-12 APPROACH TO LANE CLOSURE, FREEWAY/EXPRESSWAY
- 701401-13 LANE CLOSURE, FREEWAY/EXPRESSWAY
- 701411-09 LANE CLOSURE, MULTILANE, AT ENTRANCE OR EXIT RAMP, FOR SPEEDS ≥ 45 MPH
- 701446-11 TWO LANE CLOSURE, FREEWAY/EXPRESSWAY
- 701901-11 TRAFFIC CONTROL DEVICES

## GENERAL NOTES

- UTILITIES KNOWN TO HAVE FACILITIES WITHIN THE PROJECT AREA ARE AS FOLLOWS:

UTILITY	ABOVE GROUND	BELOW GROUND
AMEREN ILLINOIS (GAS & ELECTRIC)	X	X
AT&T ILLINOIS (COMMUNICATIONS)	X	X
DEPARTMENT OF CENTRAL MANAGEMENT SERVICES	X	X
CITY OF COLLINSVILLE (WATER & SANITARY SEWER)		X

- NO SURVEY WAS PERFORMED FOR THIS PROJECT AND THE PLANS WERE CREATED USING MICROFILM AND FIELD MEASUREMENTS.
- ALL TURF AREAS DISTURBED BY THE CONTRACTOR SHALL BE SEEDED WITH THE APPROPRIATE EROSION CONTROL, AS DIRECTED BY THE ENGINEER, AT THE CONTRACTOR'S EXPENSE.

- THE RESIDENT ENGINEER SHALL VERIFY THE EXISTENCE OF HIGHWAY LIGHTING, INTELLIGENT TRANSPORTATION SYSTEMS (I.T.S.) UTILITIES, AND/OR ELECTRICAL CABLES ASSOCIATED WITH TRAFFIC SIGNALS WITHIN THE PROJECT LIMITS. IF ANY OF THESE EXIST WITHIN THE PROJECT LIMITS, AND IF THESE ITEMS REQUIRE LOCATING, THE CONTRACTOR SHALL BE DIRECTED TO DO SO ACCORDING TO SECTION 803 OF THE STANDARD SPECIFICATIONS. THIS WORK SHALL BE PAID FOR ACCORDING TO ARTICLE 109.04 OF THE STANDARD SPECIFICATIONS.
- THE DEPARTMENT STRONGLY ENCOURAGES THE PRIME CONTRACTOR AND THEIR APPROVED SUB-CONTRACTORS TO HIRE MINORITY, WOMEN AND DISADVANTAGED INDIVIDUALS FROM ITS FEDERALLY FUNDED HIGHWAY CONSTRUCTION CAREERS TRAINING PROGRAM (HCCTP) TO HELP MEET WORKFORCE AND TRAINEE GOALS. THIS PROGRAM IS TRAINING MINORITIES, WOMEN AND DISADVANTAGED INDIVIDUALS IN HIGHWAY CONSTRUCTION-RELATED SKILLS, E.G., MATH FOR THE TRADES, JOB READINESS, TECHNICAL SKILLS COURSEWORK (CARPENTRY, CONCRETE FLATWORK, BLUEPRINT READING, SITE WORK, TOOLS USE, ETC.) AND OSHA 10 HOUR CERTIFICATION, TO PREPARE THEM FOR A CAREER IN THE HIGHWAY CONSTRUCTION TRADES. GRADUATES ARE WELL-TRAINED AND READY TO BECOME PRODUCTIVE ENTRY-LEVEL CONSTRUCTION WORKERS. CONTACT THE DISTRICT 8 EEO OFFICE AT 618-346-3360 AND/OR THE HCCTP COORDINATOR AT 618-874-6528 TO LEARN MORE ABOUT THE PROGRAM AND FOR ASSISTANCE I MEETING WORKFORCE AND TRAINEE GOALS.
- TWO CHANGEABLE MESSAGE SIGNS SHALL BE REQUIRED FOR THIS PROJECT. IT SHALL BE PLACED TWO WEEKS PRIOR TO ANY LANE CLOSURE AND SHALL REMAIN UP FOR THE DURATION OF THE PROJECT. THE CHANGEABLE MESSAGE SIGNS SHALL BE PLACED ALONG I-255 OR AT THE DIRECTION OF THE ENGINEER.
- SSPC QP1 AND QP2 CONTRACTOR CERTIFICATIONS ARE REQUIRED FOR THIS CONTRACT.
- CLEANING AND PAINTING OF THE EXISTING STEEL SHALL BE AS SPECIFIED IN THE SPECIAL PROVISION FOR "CLEANING AND PAINTING EXISTING STEEL STRUCTURES". ALL BEAMS, BEARINGS, AND OTHER STRUCTURAL STEEL SHALL BE CLEANED PER NEAR WHITE BLAST CLEANING (SSPC-SP10).
- THE AREAS CLEANED PER NEAR WHITE BLAST CLEANING SHALL BE PAINTED ACCORDING TO THE REQUIREMENTS OF SYSTEM 1-OZ/E/U. THE COLOR OF THE FINAL FINISH COAT FOR ALL INTERIOR STEEL SURFACES SHALL BE GRAY (MUNSELL NO 5B 7/1). THE COLOR OF THE FINAL FINISH COAT FOR THE EXTERIOR AND BOTTOM FLANGE OF THE FASCIA BEAMS SHALL BE REDDISH BROWN (MUNSELL NO 2.5 YR 3/4)
- A MINIMUM OF 2 AIR MONITORS WILL BE REQUIRED TO MONITOR ABRASIVE BLASTING OPERATIONS AT THIS SITE. SEE SPECIAL PROVISION FOR "CONTAINMENT AND DISPOSAL OF LEAD PAINT CLEANING RESIDUES".

## COMMITMENTS

NONE

MODEL: General Notes (Sheet)  
FILE NAME: c:\p\work\collinsville\154079\0676U84-sh-gennote.dgn

USER NAME = Joseph.Arteen	DESIGNED -	REVISED -
	DRAWN -	REVISED -
	CHECKED -	REVISED -
PLOT DATE = 1/27/2026	DATE -	REVISED -

STATE OF ILLINOIS  
DEPARTMENT OF TRANSPORTATION

INDEX OF SHEETS, HIGHWAY STANDARDS,  
GENERAL NOTES, AND COMMITMENTS

SCALE: SHEET 1 OF 1 SHEETS STA. TO STA.

F.A.I RTE.	SECTION	COUNTY	TOTAL SHEETS	SHEET NO.
255	60-8P	MADISON	10	2
CONTRACT NO. 76U84				
ILLINOIS FED. AID PROJECT				

90% FED  
10% STATE

CODE NO.	ITEM	UNIT	TOTAL QUANTITY	CONSTR. CODE
				BRIDGE 0047 S.N. 060-0215
67100100	MOBILIZATION	L SUM	1	1
70100420	TRAFFIC CONTROL AND PROTECTION, STANDARD 701411	EACH	2	2
70107025	CHANGEABLE MESSAGE SIGN	CAL DA	64	64
70200100	NIGHTTIME WORK ZONE LIGHTING	L SUM	1	1
X7010001	MOBILE BARRIER TRAILER	L SUM	1	1
X7010216	TRAFFIC CONTROL AND PROTECTION, (SPECIAL)	L SUM	1	1
X7010805	TRAFFIC CONTROL AND PROTECTION, STANDARD 701401 (SPECIAL)	L SUM	1	1
Z0007101	CONTAINMENT AND DISPOSAL OF LEAD PAINT CLEANING RESIDUES NO. 1	L SUM	1	1
Z0010501	CLEANING AND PAINTING STEEL BRIDGE NO. 1	L SUM	1	1

MODEL: SOO (Sheet)  
FILE NAME: c:\p\work\wv\illiantest\p1154079\0676U84-sh-SOO.dgn

USER NAME = Joseph.Arteen	DESIGNED -	REVISED -
	DRAWN -	REVISED -
	CHECKED -	REVISED -
PLOT DATE = 1/27/2026	DATE -	REVISED -

**STATE OF ILLINOIS  
DEPARTMENT OF TRANSPORTATION**

**SUMMARY OF QUANTITIES**

SCALE: SHEET 1 OF 1 SHEETS STA. TO STA.

F.A.I RTE.	SECTION	COUNTY	TOTAL SHEETS	SHEET NO.
255	60-8P	MADISON	10	3
CONTRACT NO. 76U84				
ILLINOIS FED. AID PROJECT				





W4-2R(O)-48

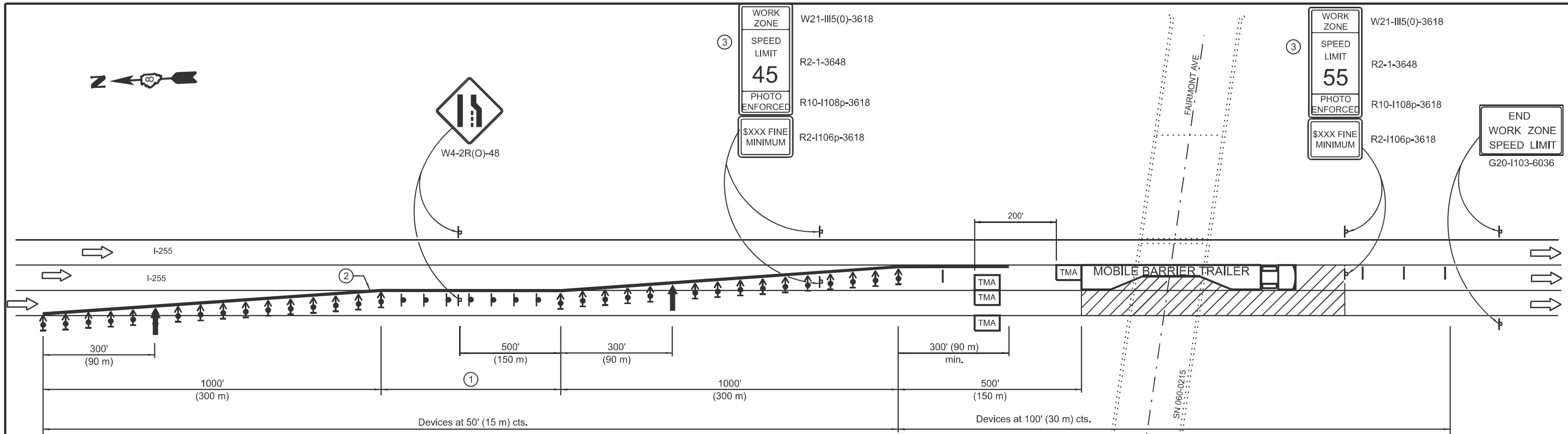
③

WORK ZONE	W21-III5(0)-3618
SPEED LIMIT	R2-1-3648
45	
PHOTO ENFORCED	R10-I108p-3618
\$XXX FINE MINIMUM	R2-I106p-3618

③

WORK ZONE	W21-III5(0)-3618
SPEED LIMIT	R2-1-3648
55	
PHOTO ENFORCED	R10-I108p-3618
\$XXX FINE MINIMUM	R2-I106p-3618

END WORK ZONE SPEED LIMIT
G20-I103-6036



See Standard 701400 for approach Start of lane closure taper

**SYMBOLS**

- Arrow board
- Work area
- Sign
- Direction indicator barricade with steady burn monodirectional light
- Type II barricade, drum, or vertical barricade with steady burn monodirectional light
- Type II barricade, drum, or vertical barricade
- MOBILE BARRIER TRAILER
- TRUCK/TRAILER MOUNTED ATTENUATOR

① The length of the tangent section shall be:

Duration of Closure	Length of Tangent Section
< 14 Days	1000' (300 m)
≥ 14 Days	2000' (600 m)

② ReflectORIZED temporary pavement marking tape shall be placed throughout the tapers and for 300' (90 m) along-side the work area when the closure time is greater than fourteen days. The edge line shall be white for right lane closures and yellow for left lane closures.

③ Work zone speed limits signs shall be moved as necessary to maintain the required spacing between the signs and the workers in each separate work activity. Work Zone Speed Limit 55 Photo Enforced sign shall be omitted when the work area dictates that placement of the sign array within 500' (150 m) of the End Work Zone Speed Limit sign.

**GENERAL NOTES**

THIS DETAIL IS USED WHERE AT ANY TIME ANY VEHICLE, EQUIPMENT, WORKERS OR THEIR ACTIVITIES WILL ENCROACH ON TWO LANES OF A FREEWAY/EXPRESSWAY.

THIS DETAIL MUST ALWAYS BE USED IN COMBINATION WITH STANDARD 701400.

THIS DETAIL ALSO APPLIES WHEN WORK IS BEING PERFORMED IN THE LEFT LANES. UNDER THESE CONDITIONS, THE SET UP WOULD BE A MIRROR IMAGE TO WHAT IS SHOWN.

CHECK BARRICADES SHALL BE PLACED IN THE MIDDLE OF THE CLOSED LANES AT 1000' (300 M) CENTERS.

ALL DIMENSIONS ARE IN INCHES (MILLIMETERS) UNLESS OTHERWISE SHOWN.

THIS DETAIL IS USED TO CLOSE TWO OR THREE LANES ON I-255.

THIS DETAIL ALSO APPLIES WHEN WORK IS BEING PERFORMED ON THE NORTH BOUND. UNDER THESE CONDITIONS, THE SETUP WOULD BE A MIRROR IMAGE TO WHAT IS SHOWN.

**TWO LANE CLOSURE,  
FREEWAY/EXPRESSWAY**

**DETAIL**

MODEL: Traffic Control (Sheet)  
FILE NAME: c:\pwworking\dotlanetemp\id1154079\0676\U84-shh-staging.dgn

USER NAME = Joseph.Arteen	DESIGNED -	REVISED -
	DRAWN -	REVISED -
	CHECKED -	REVISED -
PLOT DATE = 1/27/2026	DATE -	REVISED -

**STATE OF ILLINOIS  
DEPARTMENT OF TRANSPORTATION**

**TRAFFIC CONTROL AND PROTECTION, (SPECIAL)**

SCALE: NTS    SHEET 2 OF 2 SHEETS    STA.    TO STA.

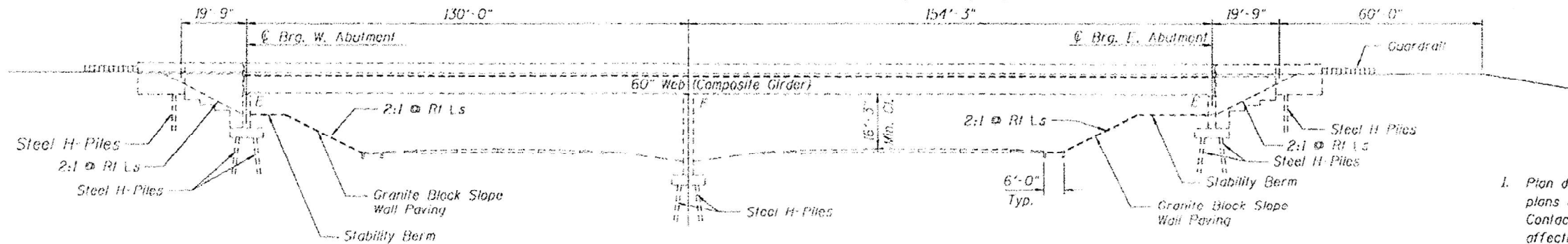
F.A.I. RTE.	SECTION	COUNTY	TOTAL SHEETS	SHEET NO.
255	60-8P	MADISON	10	5
CONTRACT NO. 76U84				
ILLINOIS FED. AID PROJECT				

Bench Mark: B.M. "A" R.R Spike in P.P. at Sta. 1334+00 - 730' L.L., Elev. 422.22

Existing Structure: The original structure was constructed in 1986 as FAI Route 255, Section 60 B/B.

The bridge superstructure consists of a continuous two span composite welded plate girder bridge with a 1/2" deck. The substructures consist of sand filled vaulted abutments and a concrete pier all supported on steel piles. The abutment slabs are 12" thick. The back-to-back of abutment dimension is 324'-9" with an out-to-out deck dimension of 33'-2". The span lengths (Cl bearing to Cl bearing) are 130'-0" and 154'-3". The bridge has a left forward skew of 2° 13' 15". Two lanes of traffic will be maintained on the bridge utilizing stage construction.

FOR INFORMATION ONLY



ELEVATION

GENERAL NOTES

1. Plan dimensions, elevations and details relative to existing plans are subject to nominal construction variations. The Contractor shall field verify existing dimensions and details affecting new construction and make necessary approved adjustments prior to construction or ordering of materials. Such variations shall not be cause for additional compensation for a change in scope of the work, however, the Contractor will be paid for the quantity actually furnished at the unit price bid for the work.

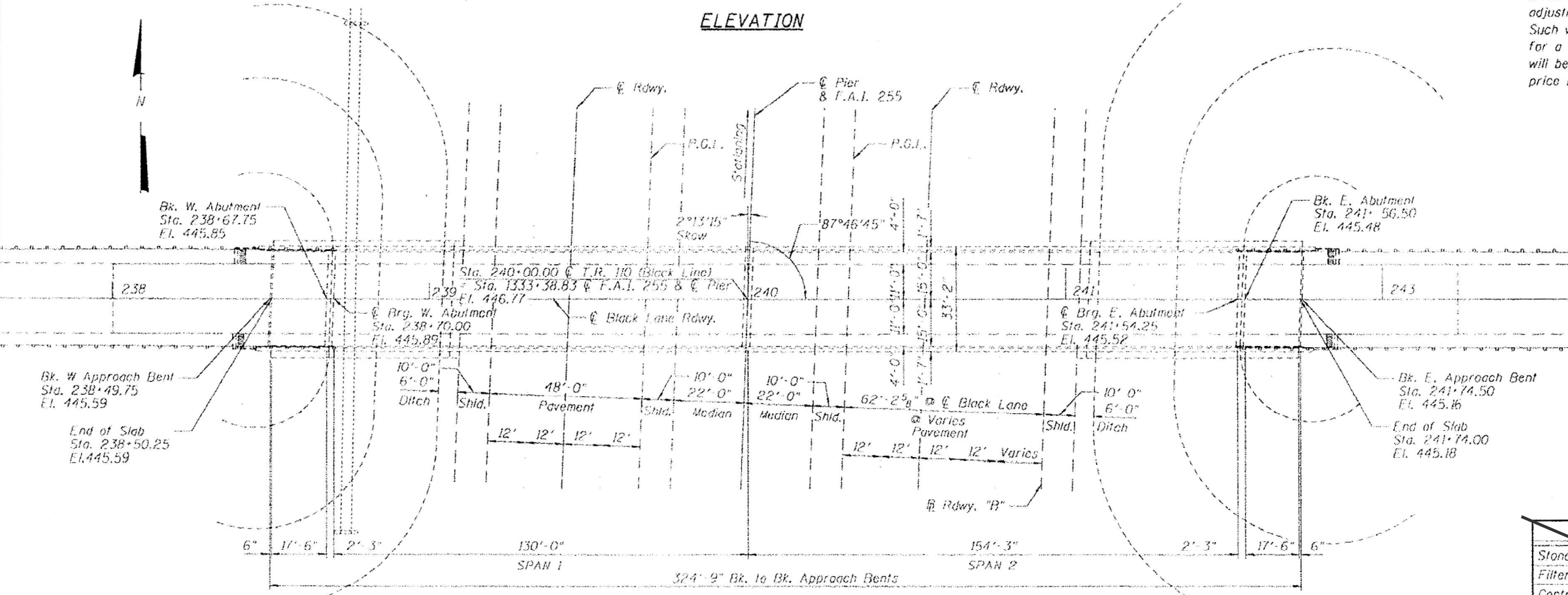
Apply Concrete sealer per Article 587 of the standard Specifications to the bridge deck, top and inside vertical faces of the parapets, end posts, and wing walls.

INDEX OF SHEETS

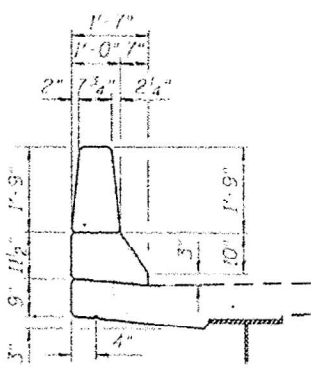
1. General Plan and Elevation
2. Slope wall repairs East Abutment
3. Slope wall repairs West Abutment
4. Seismic Bumpers

TOTAL BILL OF MATERIAL

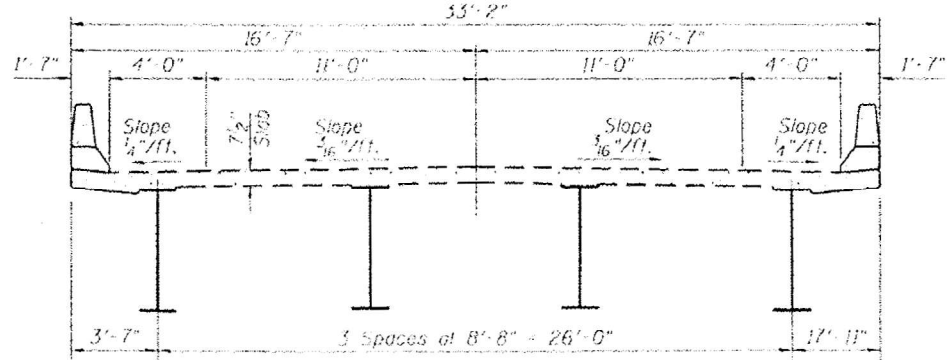
ITEM	UNIT	TOTAL
Stone Riprap, Class A-5	Ton	5
Filter Fabric	Sq Yd	6
Controlled low strength material	Cu Yd	15
Concrete Sealer	Sq Ft	12,157
Granite Block replacement	Sq Ft	98
Furnish & Erect Structural Steel	Ton	450



PLAN



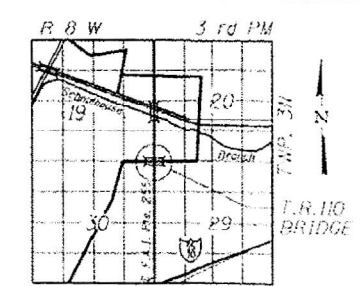
PARAPET DETAIL



CROSS SECTION



DATE: 03/09/2012  
 Francis A. Smith, Jr.  
 F. ALLEN SMITH, P.E., S.E.  
 NO. 081-005860  
 EXP. DATE 11/30/2012



LOCATION SKETCH

MODEL: Project Detail Sheet (Sheet)  
 FILE NAME: c:\p\work\project\sheet\154079\0676184-shd-details.dgn

USER NAME = Joseph.Artean	DESIGNED -	REVISED -
	DRAWN -	REVISED -
	CHECKED -	REVISED -
PLOT DATE = 12/9/2025	DATE -	REVISED -

STATE OF ILLINOIS  
 DEPARTMENT OF TRANSPORTATION

STRUCTURE DETAILS - SN 060-0215

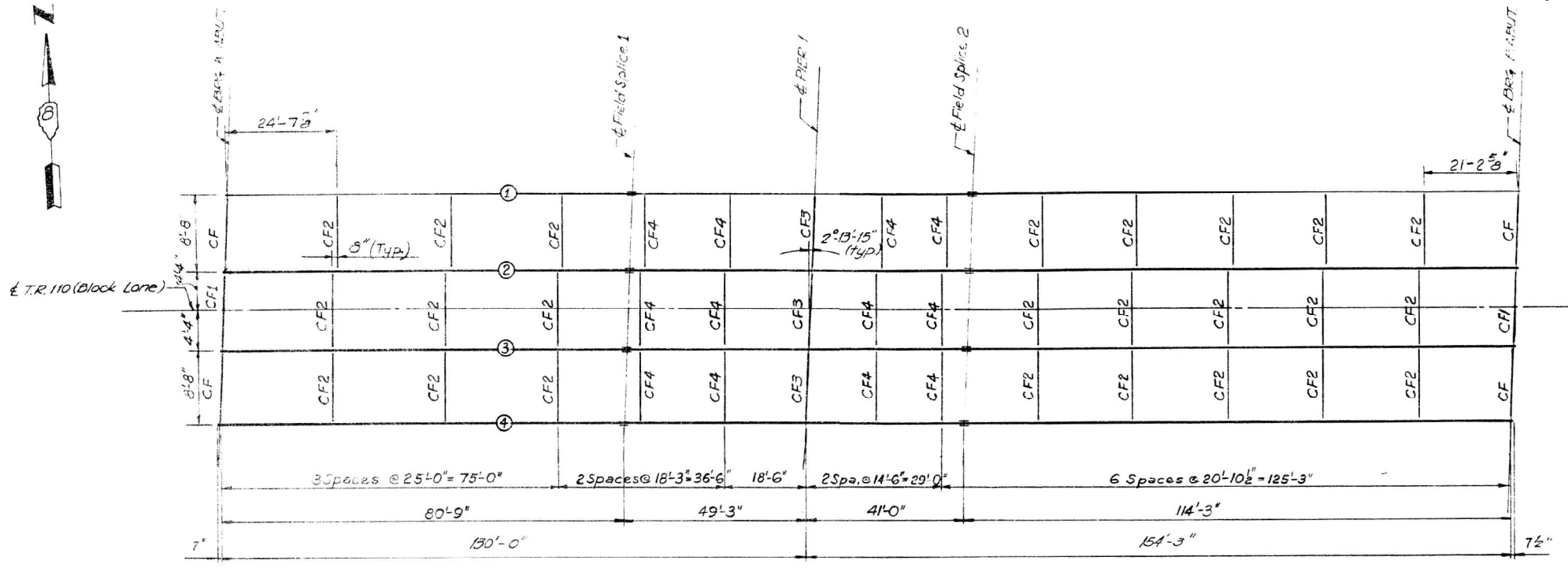
SCALE: SHEET 1 OF 5 SHEETS STA. TO STA.

FAI RTE.	SECTION	COUNTY	TOTAL SHEETS	SHEET NO.
255	60-8P	MADISON	10	6
CONTRACT NO. 76U84				
ILLINOIS FED. AID PROJECT				

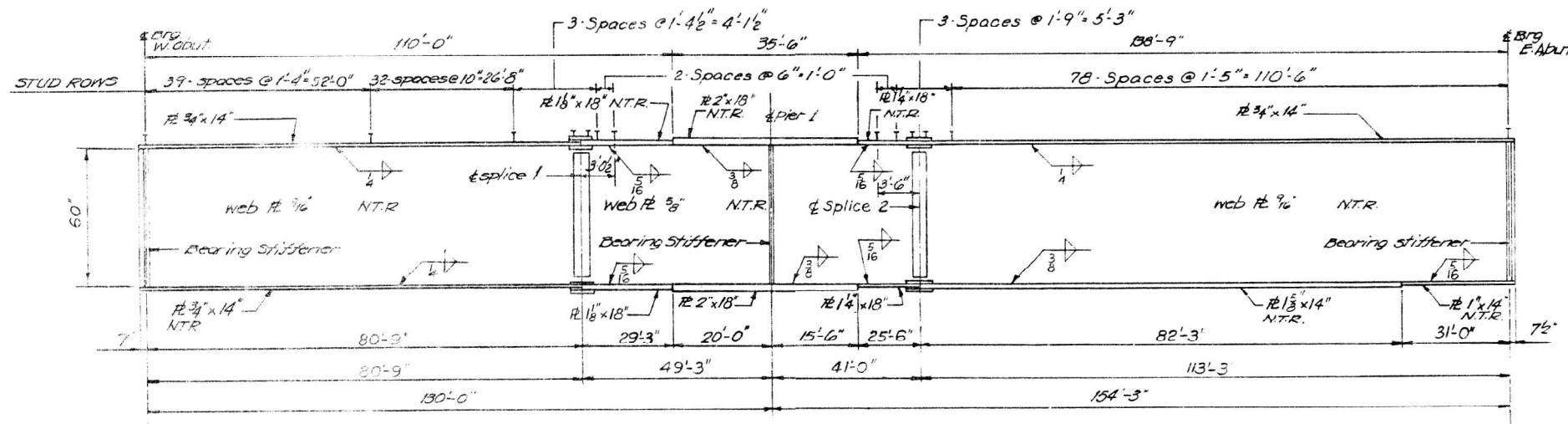


FOR INFORMATION ONLY

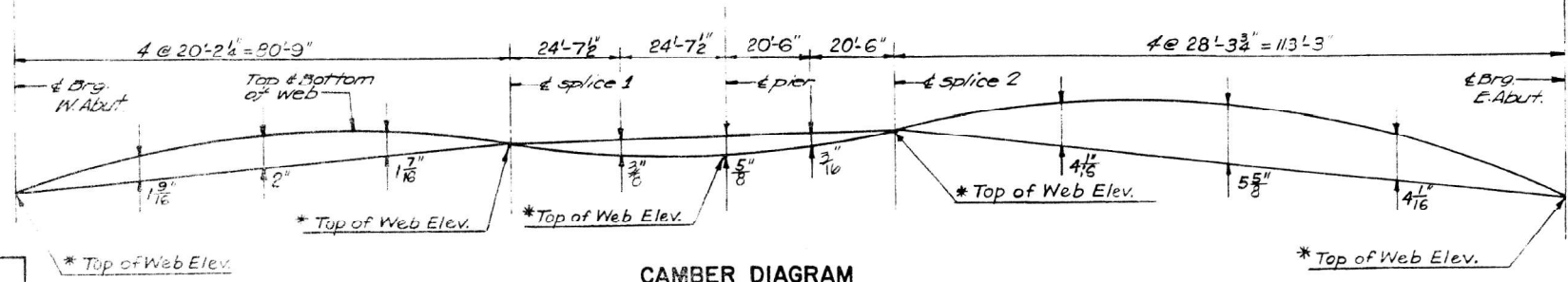
ROUTE NO.	SECTION	COUNTY	TOTAL SHEETS	SHEET NO.
F.A.1-255	60-BHB	MADISON	35	24
FED. ROAD DIV No 7		ILLINOIS PROJECT		



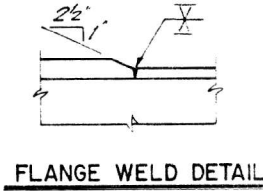
FRAMING PLAN



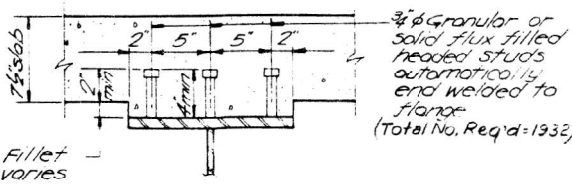
TYPICAL STRINGER ELEVATION



CAMBER DIAGRAM



FLANGE WELD DETAIL



TYPICAL SPACING STUDS PER ROW

**GIRDER MOMENT TABLE**

	0.4 Sp. 1	Pier	0.6 Sp. 2
$I_s$ (in <sup>4</sup> )	29,510	80,466	39,229
$I_c$ (in <sup>4</sup> )	68,741	—	98,377
$S_s$ (in <sup>3</sup> )	959.6	2514.6	1513.4
$S_c$ (in <sup>3</sup> )	1346.6	—	2070.0
$Z$ (in <sup>3</sup> )	—	—	—
$\phi$ (K/I)	1.03	1.63	1.07
$M\phi$ (K)	837.0	4494.4	1790
$s\phi$ (K/I)	0.41	—	0.41
$M_s\phi$ (K)	433.8	—	768
$M\phi$ (K)	1324.7	1623.3	1,626.5
$M_{imp}$ (K)	259.7	303.5	291.2
$S_3(M\phi + I)$ (K)	2623.0	3,211.3	3,196.2
$M_a$ (K)	505.6	10,017.4	7480.5
$M_u$ (K)	—	10,330.6	—
$f_s \phi$ non-comp (k.s.i.)	10.5	21.4	14.2
$f_s \phi$ (comp) (k.s.i.)	3.8	—	4.5
$f_s S_3 (\phi + I)$ (k.s.i.)	23.5	15.3	18.5
$f_s$ (Overload) (k.s.i.)	37.8	36.7	37.8
$f_s$ (Total) (k.s.i.)	47.9	47.8	48.6
VR (K)	68.7	—	67.6

**GIRDER REACTION TABLE**

	W. ABUT	PIER	E. ABUT
R $\phi$ (K)	60.8	281.7	85.1
R $\phi$ (K)	55.9	134.5	58.6
IMP (K)	11.0	21.2	10.4
R Total (K)	127.7	437.4	154.1

$I_s$  and  $S_s$  are the moment of Inertia and Section Modulus of the steel section used in computing  $f_s$  Total.  
 $I_c$  and  $S_c$  are the moment of Inertia and Section Modulus of the composite section used in computing  $f_s$  Total.  
 VR is the maximum  $\phi$  + Impact shear range in Span.  
 $M_u$  = Maximum Moment Capacity  
 $M_a$  (Applied Moment) =  $1.3 [M\phi + M_s\phi - S_3 (M\phi + I)]$

**\* TOP OF WEB ELEVATIONS**

LOCATION	W. ABUT.	SPLICE #1	PIER	SPLICE #2	E. ABUT.
1 & 4	444.91	445.64	445.70	445.83	445.55
2 & 3	445.06	445.79	445.85	445.97	444.70

\* For Fabrication Only

DESIGNED	K.J.B.
CHECKED	R.W.C.
DRAWN	J.W.H.
CHECKED	J.M.F.

USER NAME = Joseph.Arten	DESIGNED -	REVISED -
	DRAWN -	REVISED -
	CHECKED -	REVISED -
PLOT DATE = 1/27/2026	DATE -	REVISED -

STATE OF ILLINOIS  
DEPARTMENT OF TRANSPORTATION

STRUCTURE DETAILS - SN 060-0215

SCALE: SHEET 3 OF 5 SHEETS STA. TO STA.

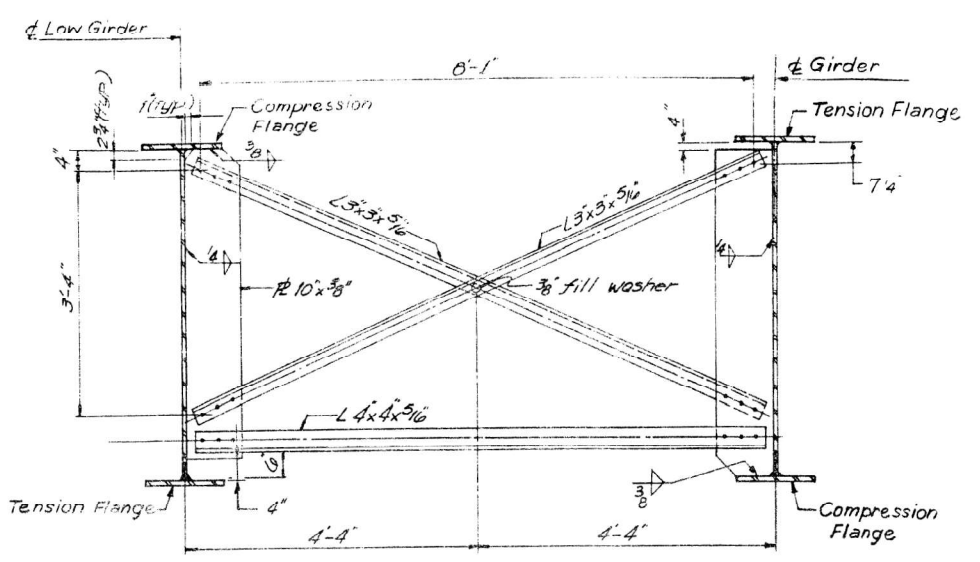
F.A.I. RTE.	SECTION	COUNTY	TOTAL SHEETS	SHEET NO.
255	60-8P	MADISON	10	8
CONTRACT NO. 76U84			ILLINOIS FED. AID PROJECT	

STATE OF ILLINOIS  
DEPARTMENT OF TRANSPORTATION  
**STEEL DETAILS I**  
T.R. 110 (BLACK LANE)  
OVER F.A.I. 255  
SECTION 60-8HB  
MADISON COUNTY  
H. W. LOCHNER, INC.  
ENGINEERS  
CHICAGO, ILL.

MODEL: Structure details-1 [Sheet]  
FILE NAME: c:\pwworking\lochner\proj\154079\060-0215-01-01-01.dgn

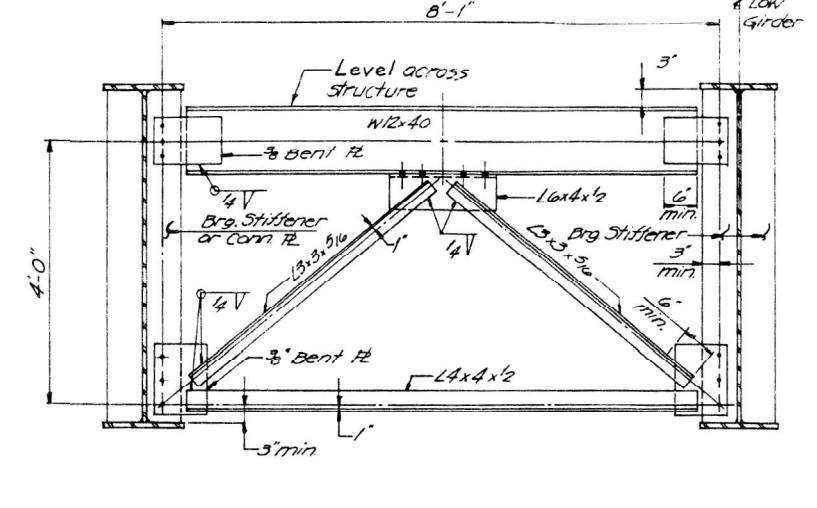
ROUTE NO.	SECTION	COUNTY	TOTAL SHEETS	SHEET NO.
F.A.I-255	60-8HS	MADISON	35	23
FA				
FED. ROAD DIV No. 7	ILLINOIS	PROJECT		

FOR INFORMATION ONLY



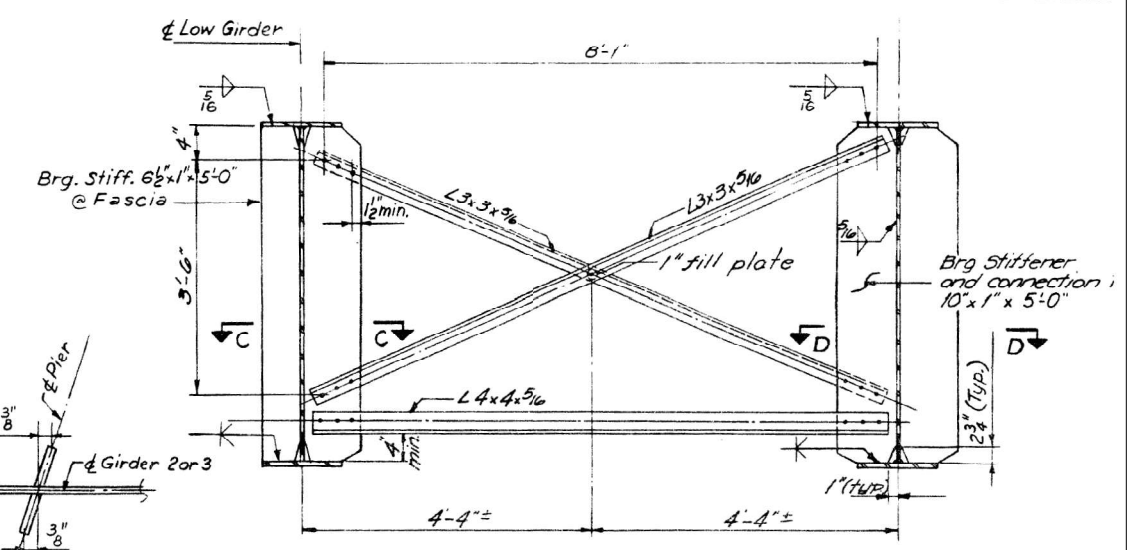
CF-2 (Near Mid-Span) CF-4 (Near Pier)  
**TYPICAL INTERIOR CROSS FRAME**

NOTE: Use 1/4" holes for all 3/8" bolts @ C.F.S 2 & 3  
Hardened washers shall be req'd over all holes @ C.F.S 2 & 3



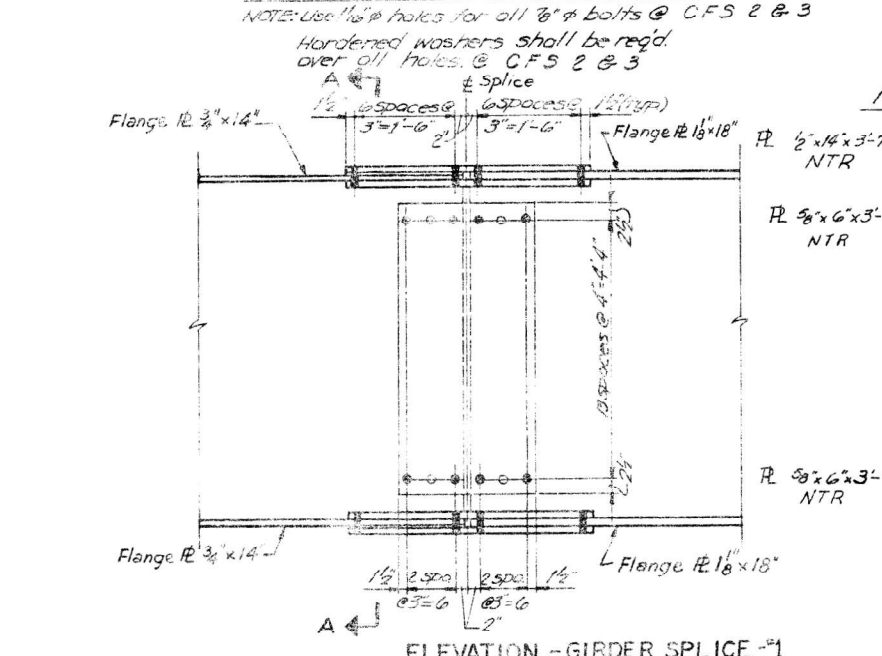
**END CROSS FRAME CF**

NOTE: Use 1/4" holes for all 3/8" bolts @ CF  
Hardened washers shall be req'd over all holes @ CF

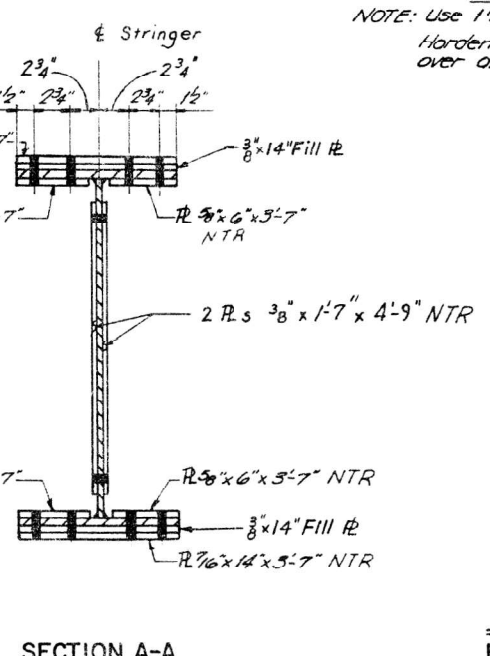


**TYPICAL PIER CROSS FRAME CF-3**

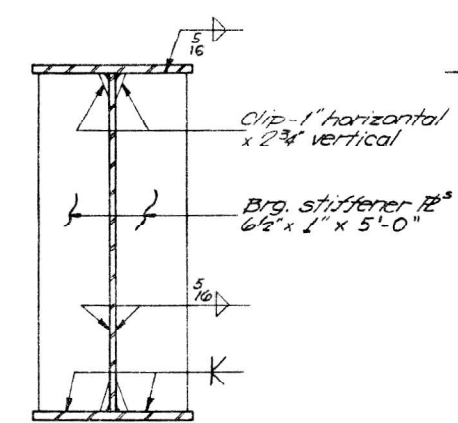
NOTE: Use 1/4" holes for 3/8" bolts @ C.F. 3  
Hardened washers shall be req'd over all holes @ C.F. 3



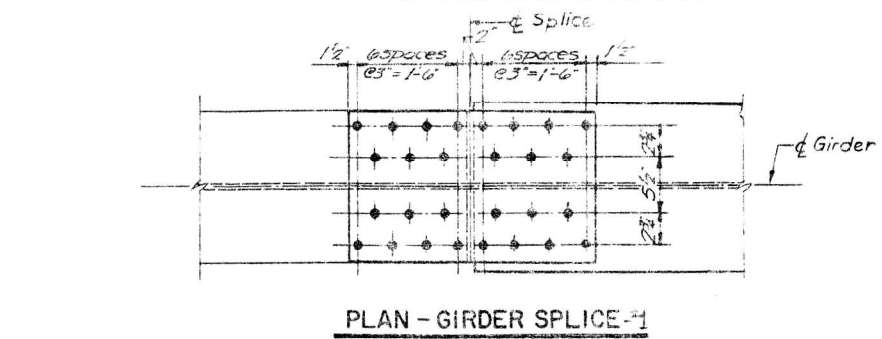
**ELEVATION - GIRDER SPLICE #1**



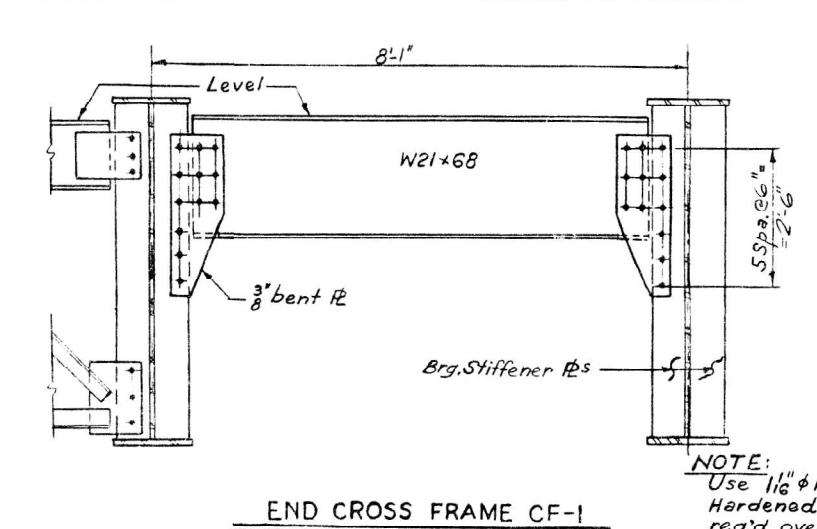
**SECTION A-A**



**ABUTMENT BEARING STIFFENER**



**PLAN - GIRDER SPLICE #1**

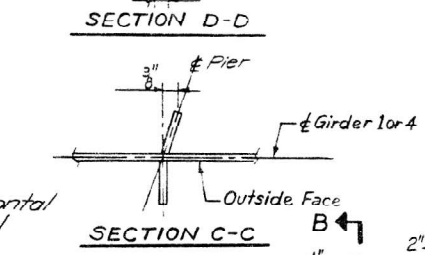


**END CROSS FRAME CF-1**

NOTE: Use 1/4" holes for all 3/8" bolts for CF 1  
Hardened Washers shall be req'd over all holes @ CF 1

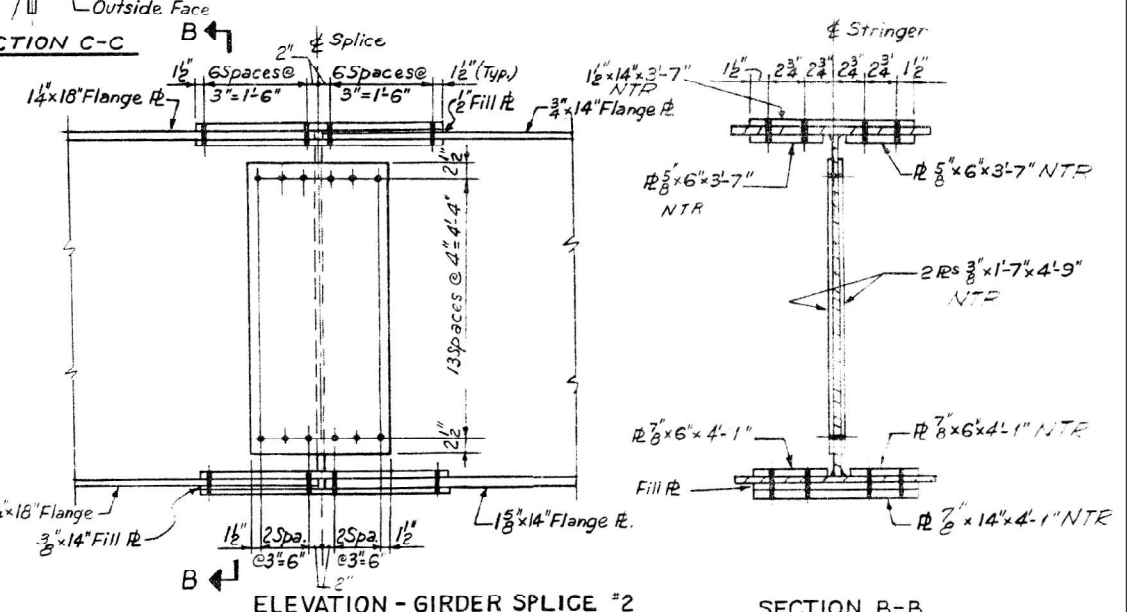
DESIGNED	SKL
CHECKED	R.W.C.
DRAWN	J.W.H.
CHECKED	J.M.P.

All bolts for splice = 3/8" H.S.  
All holes for splice = 1/4"  
NTR indicates Notch Toughness Requirements.



**SECTION D-D**

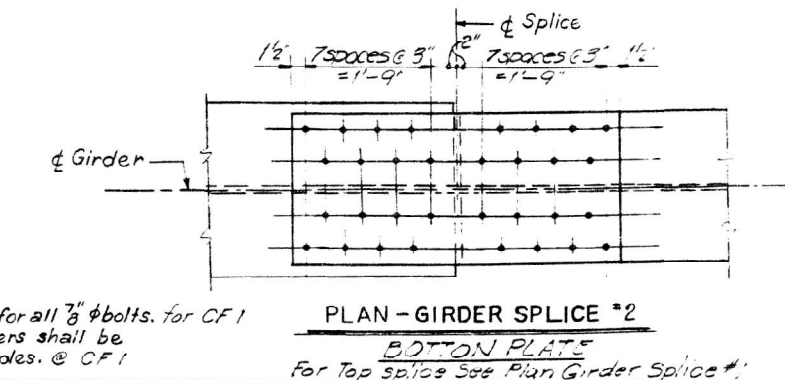
**SECTION C-C**



**ELEVATION - GIRDER SPLICE #2**

**SECTION B-B**

All bolts for splice = 3/8" H.S.  
All holes for splice = 1/4"



**PLAN - GIRDER SPLICE #2**

**BOTTOM PLATE**  
For Top splice See Plan Girder Splice #1

STATE OF ILLINOIS  
DEPARTMENT OF TRANSPORTATION

**STEEL DETAILS II**

T. R. IIO (BLACK LANE)  
OVER F.A.I. 255  
SECTION 60-8HS  
MADISON COUNTY

H. W. LOCHNER, INC.  
ENGINEERS  
CHICAGO, ILL.

USER NAME = Joseph.Arten	DESIGNED -	REVISED -
	DRAWN -	REVISED -
	CHECKED -	REVISED -
PLOT DATE = 1/27/2026	DATE -	REVISED -

STATE OF ILLINOIS  
DEPARTMENT OF TRANSPORTATION

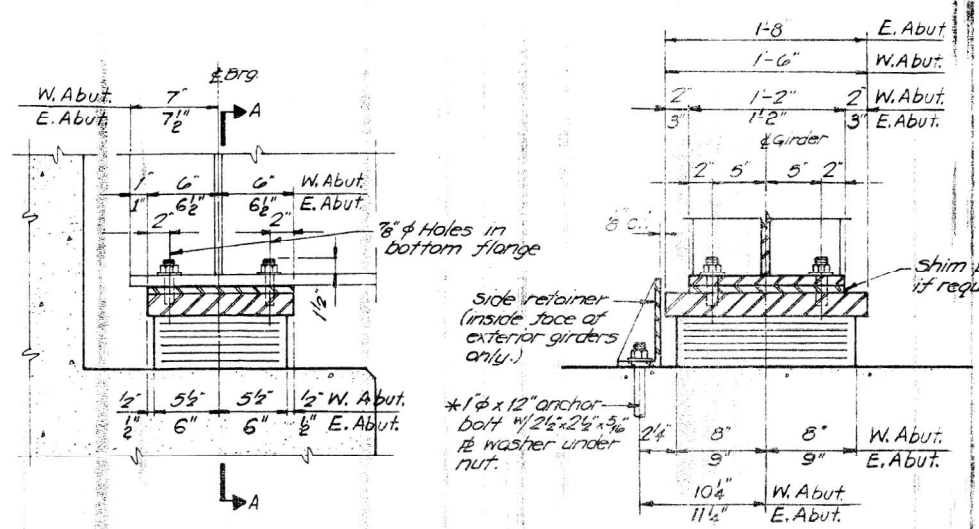
STRUCTURE DETAILS - SN 060-0215

SCALE: SHEET 4 OF 5 SHEETS STA. TO STA.

F.A.I. RTE.	SECTION	COUNTY	TOTAL SHEETS	SHEET NO.
255	60-8P	MADISON	10	9
CONTRACT NO. 76U84				
ILLINOIS FED. AID PROJECT				

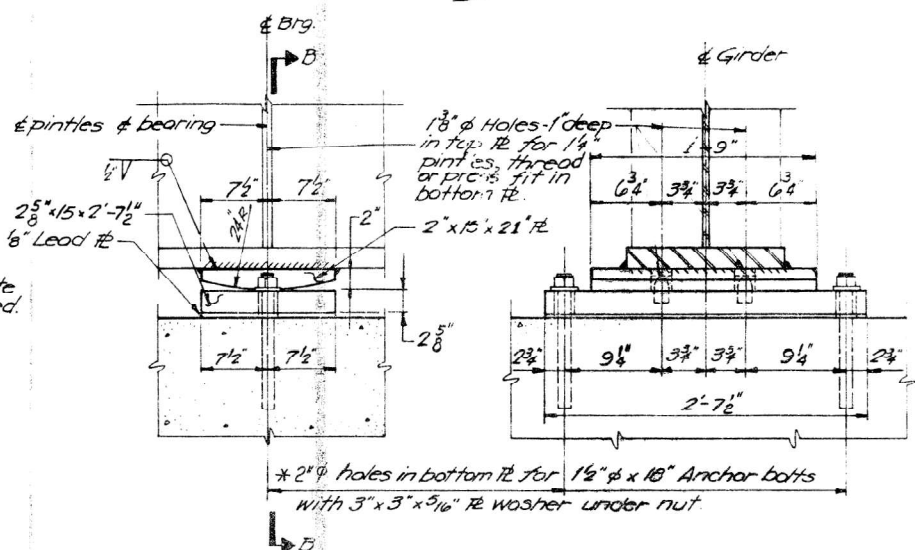
MODEL: Structure details-2 (Sheet)  
FILE NAME: c:\p\work\illinois\sn060-0215\060-0215-08-4-sh-detailed.dgn

ROUTE NO.	SECTION	COUNTY	TOTAL SHEETS	SHEET NO.
F.A.I-255	60-84B	MADISON	35	26
F.A.				
FED. ROAD DIV.	No. 7	ILLINOIS	PROJECT	



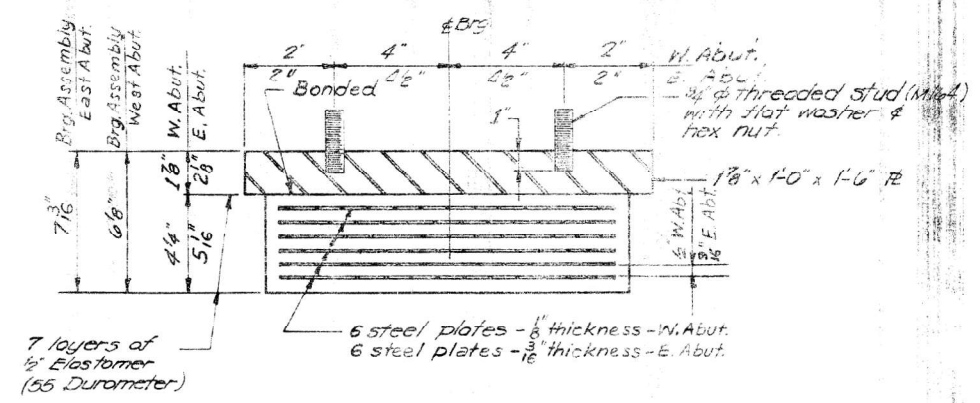
**SECTION AT ABUTMENTS**

**SECTION A-A**



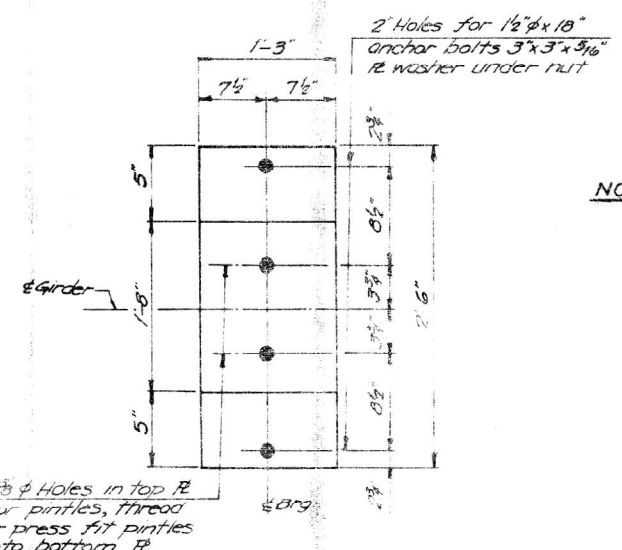
**ELEVATION AT PIER**  
(4 FIXED BRGS. REQ'D)

**SECTION B-B**



**BEARING ASSEMBLY**

(4 Req'd - W. Abut., 4-Req'd - E. Abut.)  
NOTE: Shim plates shall not be placed under bearing assembly



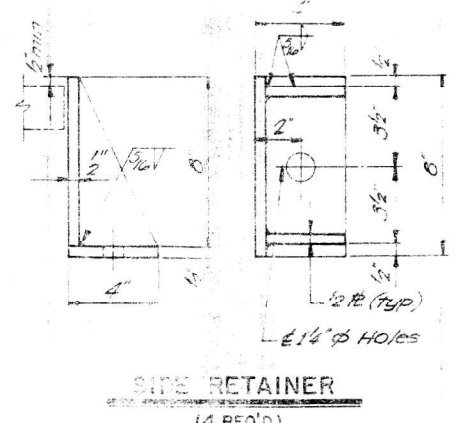
**PLAN AT PIER**

**NOTE:** After girders have been erected holes at expansion brg. shall be drilled and anchor bolts grouted in place. Anchor bolts at fixed bearing may be built into the masonry.

FOR INFORMATION ONLY



**DETAIL OF PINTLE**



**SIDE RETAINER**  
(4 REQ'D)

DESIGNED	SKL
CHECKED	RWC
DRAWN	JWH
CHECKED	JMP

USER NAME = Joseph.Arten	DESIGNED -	REVISED -
	DRAWN -	REVISED -
	CHECKED -	REVISED -
PLOT DATE = 1/27/2026	DATE -	REVISED -

STATE OF ILLINOIS  
DEPARTMENT OF TRANSPORTATION

STRUCTURE DETAILS - SN 060-0215

SCALE: SHEET 5 OF 5 SHEETS STA. TO STA.

STATE OF ILLINOIS  
DEPARTMENT OF TRANSPORTATION  
  
BEARING DETAILS  
  
T.R. 110 (BLACK LANE)  
OVER F.A.I. 255  
SECTION 60-84B  
MADISON COUNTY  
  
H. W. LOCHNER, INC.  
ENGINEERS  
CHICAGO, ILL.

F.A.I. RTE.	SECTION	COUNTY	TOTAL SHEETS	SHEET NO.
255	60-84B	MADISON	10	10
CONTRACT NO. 76U84				
ILLINOIS FED. AID PROJECT				

MODEL: Structure details-3 (Sheet)  
FILE NAME: c:\p\work\p\structure\sn060-0215\060-0215-26.dwg