

STATE OF ILLINOIS  
DEPARTMENT OF TRANSPORTATION

F.A.P. RTE.	SECTION	COUNTY	TOTAL SHEETS	SHEET NO.
789	2P	MADISON	7	1
		ILLINOIS	CONTRACT NO. 76U85	

FOR INDEX OF SHEETS, SEE SHEET NO. 2

# PROPOSED HIGHWAY PLANS

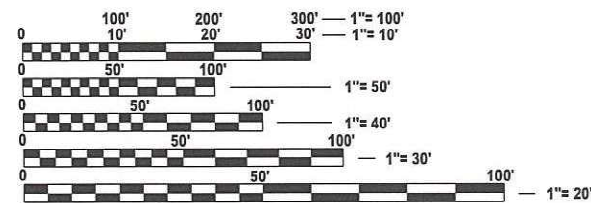
FAP ROUTE 789 (IL 003)  
SECTION 2P  
PROJECT NHPP-3TEY(033)  
BRIDGE PAINTING  
MADISON COUNTY

C-98-149-25

D-98-081-25

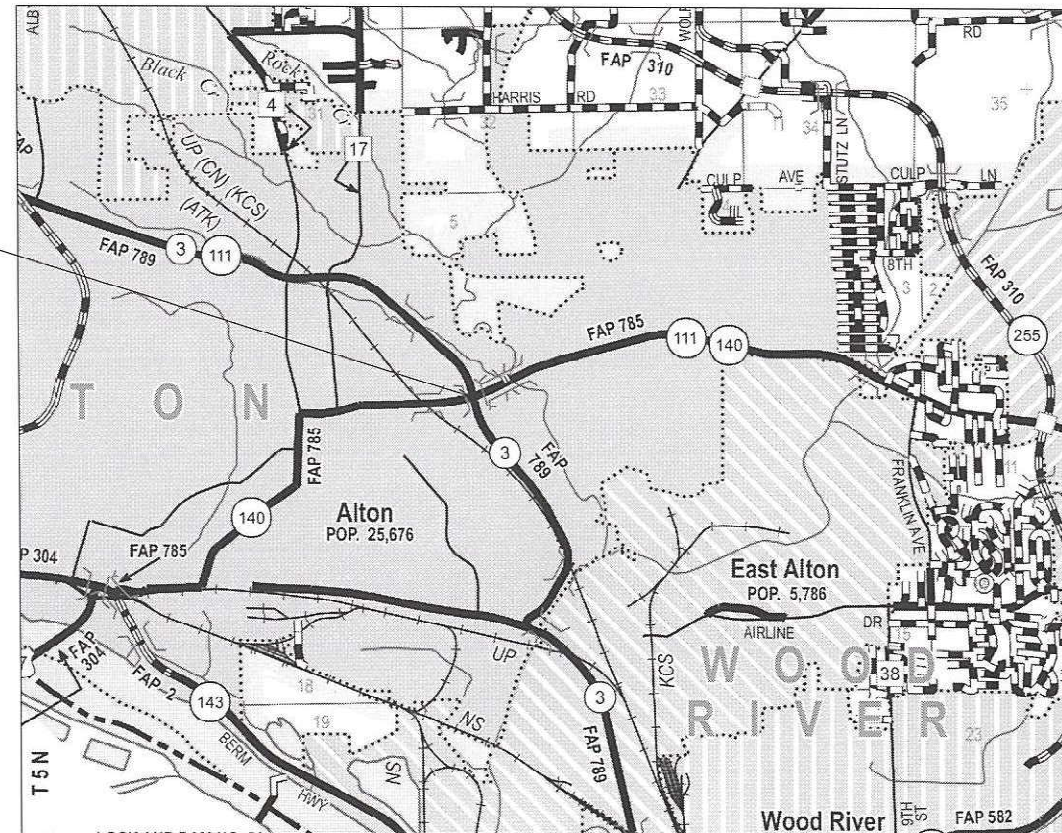


SN : 060-0213  
LAT : 38° 54' 17.66" N  
LON : 90° 7' 46.98" W



FULL SIZE PLANS HAVE BEEN PREPARED USING STANDARD ENGINEERING SCALES. REDUCED SIZED PLANS WILL NOT CONFORM TO STANDARD SCALES. IN MAKING MEASUREMENTS ON REDUCED PLANS, THE ABOVE SCALES MAY BE USED.

J.U.L.I.E.  
JOINT UTILITY LOCATION INFORMATION FOR EXCAVATION  
1-800-892-0123  
OR 811



GROSS/NET LENGTH = 232 FT. = .044 MILE

PROJECT ENGINEER : BILLIE OWEN  
PROJECT MANAGER : MIKE BERG

CONTRACT NO. 76U85

STATE OF ILLINOIS  
DEPARTMENT OF TRANSPORTATION

SUBMITTED July 23, 2026

[Signature]  
REGIONAL ENGINEER

March 20, 2026

[Signature]  
ENGINEER OF DESIGN AND ENVIRONMENT

March 20, 2026

[Signature]  
DIRECTOR OF HIGHWAYS PROJECT IMPLEMENTATION

PRINTED BY THE AUTHORITY  
OF THE STATE OF ILLINOIS

**INDEX OF SHEETS**

- 1. COVER SHEET
- 2. INDEX OF SHEETS, HIGHWAY STANDARDS, GENERAL NOTES, COMMITMENTS
- 3. SUMMARY OF QUANTITIES
- 4-7. TRAFFIC CONTROL AND PROTECTION (SPECIAL)

**HIGHWAY STANDARDS**

- 000001-09 STANDARD SYMBOLS, ABBREVIATIONS AND PATTERNS
- 001006 DECIMAL OF AN INCH AND OF A FOOT
- 701001-02 OFF-RD OPERATIONS 2L 2W MORE THAN 15FT
- 701006-05 OFF-RD OPERATIONS 2L 2W 15' TO 24" FROM PAVEMENT EDGE
- 701101-05 OFF-RD OPERATIONS, MULTILANE, 15' TO 24" FROM PAVEMENT EDGE
- 701106-02 OFF-RD OPERATIONS, MULTILANE, MORE THAN 15' AWAY
- 701400-12 APPROACH TO LANE CLOSURE FREEWAY/EXPRESSWAY
- 701428-01 TRAFFIC CONTROL SETUP AND REMOVAL FREEWAY/EXPRESSWAY
- 701901-11 TRAFFIC CONTROL DEVICES

**GENERAL NOTES**

- 1. UTILITIES KNOWN TO HAVE FACILITIES WITHIN THE PROJECT AREA:  
  
 AMEREN ILLINOIS  
 AT&T ILLINOIS  
 CLEARWAVE FIBER LLC  
 ILLINOIS AMERICAN WATER COMPANY  
 LEVEL 3 COMMUNICATIONS, LLC  
 CITY OF MADISON  
 METRO EAST SANITARY DISTRICT  
 SPRINT  
 ZAYO GROUP LLC
- 2. THE RESIDENT ENGINEER SHALL VERIFY THE EXISTENCE OF HIGHWAY LIGHTING AND/OR INTELLIGENT TRANSPORTATION SYSTEMS (I.T.S.) UTILITIES WITHIN THE PROJECT LIMITS. IF HIGHWAY LIGHTING AND/OR I.T.S. EXISTS WITHIN THE PROJECT LIMITS, AND IF THESE ITEMS REQUIRE LOCATING, THE CONTRACTOR SHALL BE DIRECTED TO DO SO ACCORDING TO SECTION 803 OF THE STANDARD SPECIFICATIONS. THIS WORK SHALL BE PAID FOR ACCORDING TO ARTICLE 109.04 OF THE STANDARD SPECIFICATIONS.
- 3. THE DEPARTMENT STRONGLY ENCOURAGES THE PRIME CONTRACTOR AND THEIR APPROVED SUB-CONTRACTORS TO HIRE MINORITY, WOMEN AND DISADVANTAGED INDIVIDUALS FROM ITS FEDERALLY FUNDED HIGHWAY CONSTRUCTION CAREERS PROGRAM (HCCTP) TO HELP MEET WORKFORCE AND TRAINEE GOALS. THIS PROGRAM IS TRAINING MINORITIES, WOMEN, AND DISADVANTAGED INDIVIDUALS IN HIGHWAY CONSTRUCTION-RELATED SKILLS, E.G., MATH FOR THE TRADES, JOB READINESS, TECHNICAL SKILLS COURSEWORK (CARPENTRY, CONCRETE FLATWORK, BLUEPRINT READING, SITE PLANS, SITE WORK, TOOLS USE, ETC.) AND OSHA 10 HOUR CERTIFICATION, TO PREPARE THEM FOR A CAREER IN THE HIGHWAY CONSTRUCTION TRADES. GRADUATES ARE WELL-TRAINED AND READY TO BECOME PRODUCTIVE ENTRY-LEVEL CONSTRUCTION WORKERS. CONTACT THE DISTRICT 8 EEO OFFICE AT 618-346-3360 AND/OR THE HCCTP COORDINATOR AT 618-874-6528 TO LEARN MORE ABOUT THE PROGRAM AND FOR ASSISTANCE IN MEETING WORKFORCE AND TRAINEE GOALS.

- 4. SSPC QP1 AND QP2 CERTIFICATION IS REQUIRED FOR THIS CONTRACT.
- 5. A MINIMUM OF THREE AIR MONITORS WILL BE REQUIRED TO MONITOR THE ABRASIVE BLASTING OPERATIONS AT EACH SITE. SEE SPECIAL PROVISION FOR "CONTAINMENT AND DISPOSAL OF LEAD PAINT CLEANING RESIDUES".
- 6. CLEANING AND PAINTING OF THE EXISTING STEEL SHALL BE AS SPECIFIED IN THE SPECIAL PROVISION FOR "CLEANING AND PAINTING EXISTING STEEL STRUCTURES". ALL BEAMS, BEARINGS, AND OTHER STRUCTURAL STEEL SHALL BE CLEANED FOR NEAR WHITE BLAST CLEANING - SSPC-SP10. THE AREA CLEANED PER NEAR WHITE BLAST CLEANING - SSPC-SP10 SHALL BE PAINTED ACCORDING TO THE REQUIREMENTS OF PAINT SYSTEM 1-OZ/E/U. THE COLOR OF THE FINISH COAT FOR ALL STEEL SURFACES SHALL BE GREY, MUNSELL NO. SB 7/1.
- 7. FOUR CHANGEABLE MESSAGE SIGNS SHALL BE REQUIRED FOR THIS PROJECT. THEY WILL BE REQUIRED TWO WEEKS PRIOR TO ANY LANE CLOSURE. LOCATIONS SHALL BE AT THE DIRECTION OF THE RESIDENT ENGINEER.

**COMMITMENTS**

NONE

MODEL: General Notes (Sheet)  
 FILE NAME: c:\pwworking\dwg\robert.hughes\illinois.gov\1143704\108761\85-sh-gennote.dgn

USER NAME = Robert.Hughes	DESIGNED -	REVISED -	<b>STATE OF ILLINOIS DEPARTMENT OF TRANSPORTATION</b>	<b>INDEX OF SHEETS, HIGHWAY STANDARDS, GENERAL NOTES COMMITMENTS</b>		F.A.P. RTE.	SECTION	COUNTY	TOTAL SHEETS	SHEET NO.
	DRAWN -	REVISED -				789	2P	MADISON	7	2
	CHECKED -	REVISED -		CONTRACT NO. 76U85						
PLOT DATE = 1/28/2026	DATE -	REVISED -		SCALE:	SHEET 1	OF 1	SHEETS	STA.	TO STA.	ILLINOIS

80% FED  
20% STATE

CONSTR. CODE

CODE NO.	ITEM	UNIT	TOTAL QUANTITY	BRIDGE
				0047 S.N. 060-0213
67100100	MOBILIZATION	L SUM	1	1
70107024	PAVEMENT MARKING BLACKOUT TAPE, 24"	FOOT	200	200
70107025	CHANGEABLE MESSAGE SIGN	CAL DA	296	296
70200100	NIGHTTIME WORK ZONE LIGHTING	L SUM	1	1
X7010001	MOBILE BARRIER TRAILER	L SUM	1	1
X7010216	TRAFFIC CONTROL AND PROTECTION, (SPECIAL)	L SUM	1	1
Z0007101	CONTAINMENT AND DISPOSAL OF LEAD PAINT CLEANING RESIDUES NO. 1	L SUM	1	1
Z0010501	CLEANING AND PAINTING STEEL BRIDGE NO. 1	L SUM	1	1

MODEL: I:\united [Sheet]  
FILE NAME: c:\pw\work\pwr\robert.hughes@illinois.gov\114370\1D876\85-shr-SOC.dgn

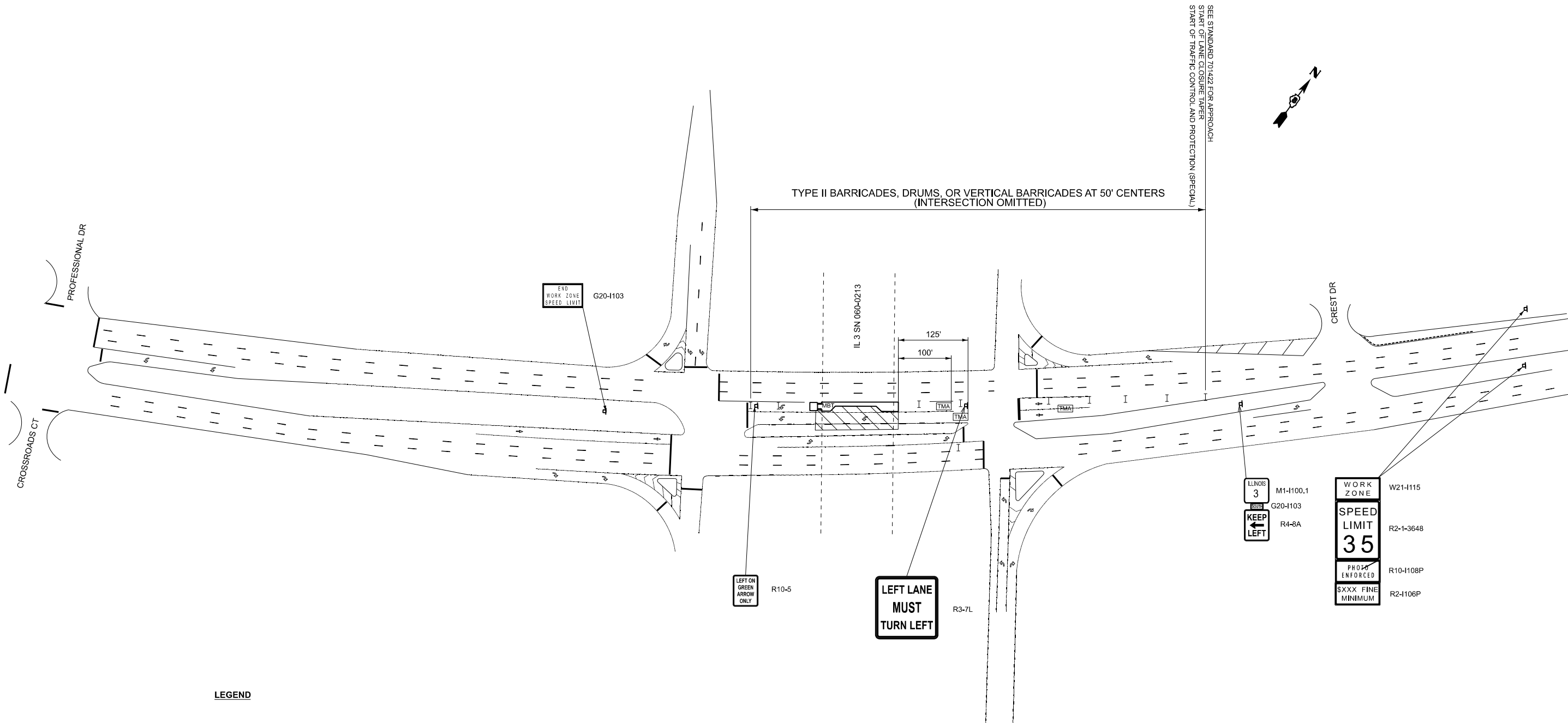
REV - MS

USER NAME = Robert.Hughes	DESIGNED -	REVISED -	<b>STATE OF ILLINOIS DEPARTMENT OF TRANSPORTATION</b>	<b>SUMMARY OF QUANTITIES</b>			F.A.P. RTE.	SECTION	COUNTY	TOTAL SHEETS	SHEET NO.
	DRAWN -	REVISED -					789	2P	MADISON	7	3
	CHECKED -	REVISED -		CONTRACT NO. 76U85							
PLOT DATE = 1/21/2026	DATE -	REVISED -		SCALE:	SHEET 1	OF 1	SHEETS	STA.	TO STA.	ILLINOIS   FED. AID PROJECT	









SEE STANDARD 701422 FOR APPROACH  
 START OF LANE CLOSURE TAPER  
 START OF TRAFFIC CONTROL AND PROTECTION (SPECIAL)

**LEGEND**

- DIRECTION INDICATOR BARRICADE WITH STEADY BURN MONODIRECTIONAL LIGHT
- WORK AREA
- TRUCK/TRAILER MOUNTED ATTENUATOR
- SIGN
- TYPE II BARRICADE, DRUM, OR VERTICAL BARRICADE
- ARROW BOARD
- PAVEMENT MARKING BLACKOUT
- MOBILE BARRIER TRAILER

**NOTES**

FINAL PLACEMENT OF ALL TRAFFIC CONTROL DEVICES WILL BE AT THE DIRECTION OF THE RESIDENT ENGINEER

MODEL: I:\utils\ed-3 [Sheet]  
 FILE NAME: c:\pw\work\pvid\robert.hughes@illinois.gov\1143704\10876\85-shr-stage4.dgn

USER NAME = Robert,Hughes	DESIGNED -	REVISED -
	DRAWN -	REVISED -
	CHECKED -	REVISED -
PLOT DATE = 1/29/2026	DATE -	REVISED -

**STATE OF ILLINOIS  
 DEPARTMENT OF TRANSPORTATION**

**TRAFFIC CONTROL AND PROTECTION (SPECIAL)**

SCALE: SHEET 4 OF 4 SHEETS STA. TO STA.

F.A.P. RTE.	SECTION	COUNTY	TOTAL SHEETS	SHEET NO.
789	2P	MADISON	7	7
CONTRACT NO. 76U85				
ILLINOIS FED. AID PROJECT				