

STATE OF ILLINOIS
DEPARTMENT OF TRANSPORTATION

F.A.I. RTE.	SECTION	COUNTY	TOTAL SHEETS	SHEET NO.
057	61-(1-1,1-2,2,3,3-1,4,5,5-1,6)PP-1	MARION	11	1
		ILLINOIS	CONTRACT NO. 76V10	

FOR INDEX OF SHEETS, SEE SHEET NO. 2

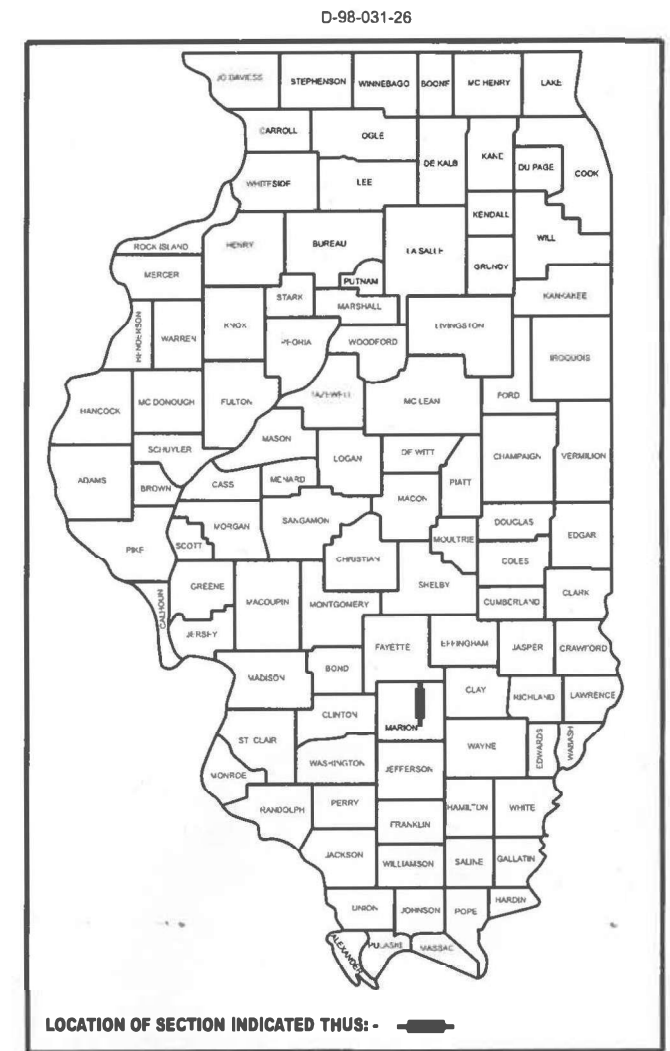
PROPOSED HIGHWAY PLANS

FAI ROUTE 57 (I-57)
SECTION 61-(1-1,1-2,2,3,3-1,4,5,5-1,6)PP-1
PATCHING
MARION COUNTY

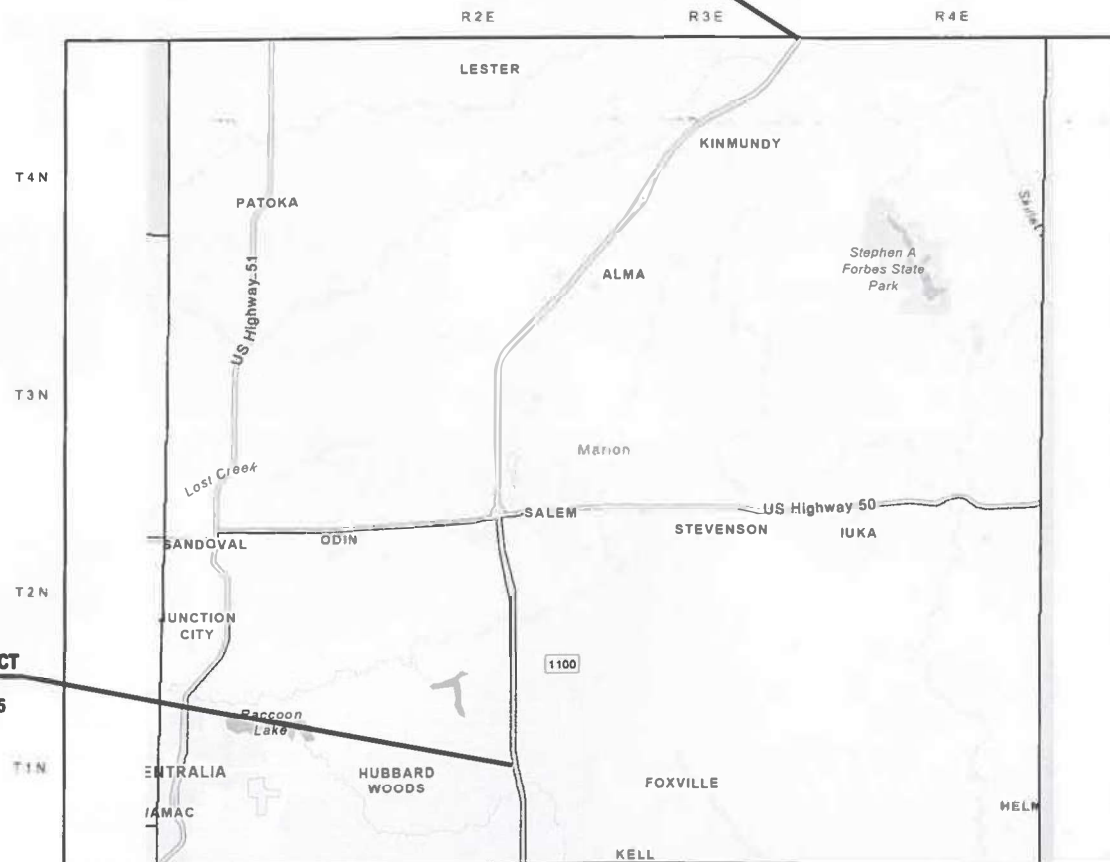
C-98-079-26

TRAFFIC DATA

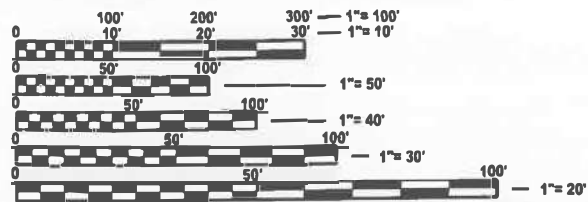
CO. LINE TO CO. RD 1050	
LOCATION	FAI 57
2024 ADT	19400
2044 ADT	23700
SU%	2.7
MU%	42.2
CO. RD 1050 TO US 50	
LOCATION	FAI 57
2024 ADT	20300
2044 ADT	24800
SU%	2.9
MU%	50.7
US 50 TO IL 161	
LOCATION	FAI 57
2024 ADT	21700
2044 ADT	26500
SU%	2.3
MU%	45.1



END PROJECT
LAT: 38.83188
LONG: -88.78804



BEGIN PROJECT
LAT: 38.52991
LONG: -88.96425



FULL SIZE PLANS HAVE BEEN PREPARED USING STANDARD ENGINEERING SCALES. REDUCED SIZED PLANS WILL NOT CONFORM TO STANDARD SCALES. IN MAKING MEASUREMENTS ON REDUCED PLANS, THE ABOVE SCALES MAY BE USED.

J.U.L.I.E.
JOINT UTILITY LOCATION INFORMATION FOR EXCAVATION
1-800-892-0123
OR 811

PROJECT ENGINEER CHERYL KEPLAR
PROJECT MANAGER BRANDON HUMPHREYS

CONTRACT NO. 76V10

GROSS LENGTH = 129179 FT. = 24.47 MILE
NET LENGTH = 129179 FT. = 24.47 MILE

STATE OF ILLINOIS
DEPARTMENT OF TRANSPORTATION

SUBMITTED Feb 4 2026
Lee J. [Signature] REGIONAL ENGINEER

March 20 2026
[Signature] ENGINEER OF DESIGN AND ENVIRONMENT

March 20 2026
[Signature] DIRECTOR OF HIGHWAYS PROJECT IMPLEMENTATION

PRINTED BY THE AUTHORITY
OF THE STATE OF ILLINOIS

INDEX OF SHEETS

1. COVER SHEET
2. INDEX OF SHEETS, HIGHWAY STANDARDS, GENERAL NOTES & COMMITMENTS
3. SUMMARY OF QUANTITIES
- 4.-6. TYPICAL SECTIONS
- 7.-9. SCHEDULES
- 10.-11. CLASS A (SPECIAL) DETAILS

HIGHWAY STANDARDS

000001-09	STANDARD SYMBOLS, ABBREVIATIONS AND PATTERNS
001001-02	AREAS OF REINFORCEMENT BARS
001006	DECIMAL OF AN INCH AND OF A FOOT
442001-04	CLASS A PATCHES
701400-12	APPROACH TO LANE CLOSURE, FREEWAY/EXPRESSWAY
701401-13	LANE CLOSURE, FREEWAY/EXPRESSWAY
701406-13	LANE CLOSURE, FREEWAY/EXPRESSWAY, DAY OPERATIONS ONLY
701411-09	LANE CLOSURE, MULTILANE, AT ENTRANCE OR EXIT RAMP, FOR SPEEDS ≥ 45 MPH
701426-09	LANE CLOSURE, MULTILANE, INTERMITTENT OR MOVING OPERATION, FOR SPEEDS ≥ 45 MPH
701428-01	TRAFFIC CONTROL, SETUP AND REMOVAL, FREEWAY/EXPRESSWAY
701901-11	TRAFFIC CONTROL DEVICES

GENERAL NOTES

1. THE UTILITIES KNOWN TO HAVE FACILITIES WITHIN THE PROJECT AREA ARE AS FOLLOWS:
 - AMEREN ILLINOIS
 - AT&T ILLINOIS
 - CHARTER COMMUNICATIONS, INC.
 - BP PIPELINES (NORTH AMERICA) INC.
 - COUNTRYMARK COOPERATIVE, LLP
 - VILLAGE OF ALMA
 - ENERGY TRANSFER CRUDE OIL COMPANY, INC.
 - FMC WATER COMPANY
 - FRONTIER COMMUNICATIONS
 - GATEWAY REGIONAL WATER COMPANY, INC.
 - CITY OF KINMUNDY
 - LIBERTY UTILITIES
 - MARATHON PIPE LINE LLC
 - NORTHEAST MARION COUNTY WATER COMPANY
 - VILLAGE OF ODIN
 - RACCOON WATER COMPANY
 - CITY OF SALEM
 - TRI-COUNTY ELECTRIC COOPERATIVE, INC.
 - WABASHCOM
2. NO SURVEY WAS PERFORMED FOR THIS PROJECT AND THE PLANS WERE CREATED USING MICROFILM AND FIELD MEASUREMENTS.
3. THE RESIDENT ENGINEER SHALL VERIFY THE EXISTENCE OF HIGHWAY LIGHTING, INTELLIGENT TRANSPORTATION SYSTEMS (I.T.S.) UTILITIES, AND/OR ELECTRICAL CABLES ASSOCIATED WITH TRAFFIC SIGNALS WITHIN THE PROJECT LIMITS. IF ANY OF THESE EXIST WITHIN THE PROJECT LIMITS, AND IF THESE ITEMS REQUIRE LOCATING, THE CONTRACTOR SHALL BE DIRECTED TO DO SO ACCORDING TO SECTION 803 OF THE STANDARD SPECIFICATIONS. THIS WORK SHALL BE PAID FOR ACCORDING TO ARTICLE 109.04 OF THE STANDARD SPECIFICATIONS.
4. FOUR CHANGEABLE MESSAGE SIGNS SHALL BE REQUIRED FOR THIS PROJECT. THEY SHALL BE PLACED AT THE BEGINNING OF THE PROJECT, AND AT THE END OF THE PROJECT TWO WEEKS PRIOR TO ANY LANE CLOSURE. THEY SHALL REMAIN UP FOR THE DURATION OF THE PROJECT.
5. DUE TO THE AGE/CONDITION OF THE EXISTING PAVEMENT ONLY HAND TOOLS WILL BE ALLOWED TO DRILL HOLES FOR TIE BARS. NO GANG DRILLS WILL BE ALLOWED.

COMMITMENTS

NONE

MODEL: General Notes (Sheet)
FILE NAME: c:\p\work\wis\odid\intel\main\id1191205176V10-plan_sheet.dgn

	USER NAME = Jon.Dirtelman	DESIGNED -	REVISED -	STATE OF ILLINOIS DEPARTMENT OF TRANSPORTATION	INDEX OF SHEETS, STANDARDS, COMMITMENTS & GENERAL NOTES	F.A.I. RTE.	SECTION	COUNTY	TOTAL SHEETS	SHEET NO.
		DRAWN -	REVISED -			057	61-1-1,1-2,2,3,3-1,4,5,5-1,6)PP-1	MARION	11	2
		CHECKED -	REVISED -			CONTRACT NO. 76V10				
	PLOT DATE = 2/6/2026	DATE -	REVISED -		SCALE:	SHEET	OF	SHEETS	STA.	TO STA.
								ILLINOIS	FED. AID PROJECT	

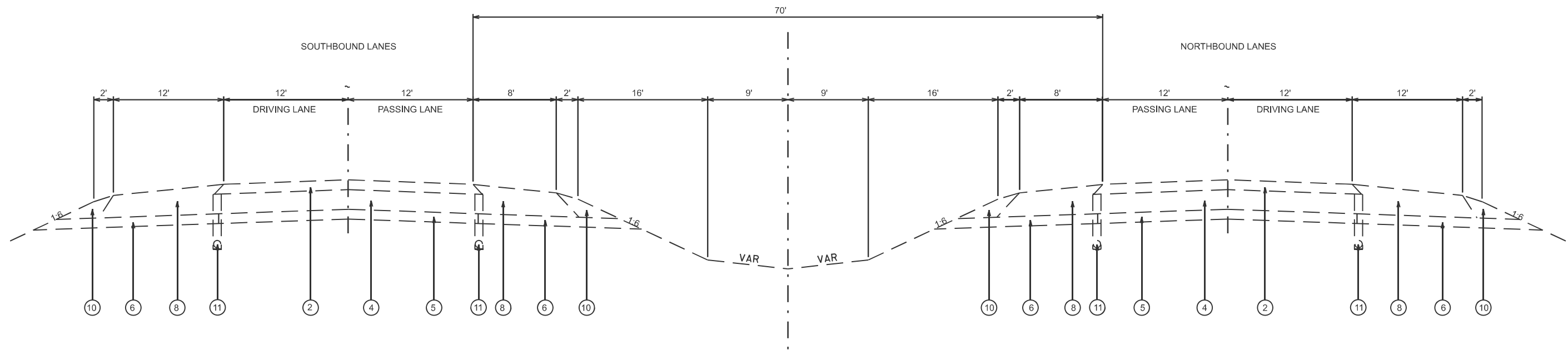
CODE NO.	ITEM	UNIT	TOTAL QUANTITY	CONSTR. CODE	
				100% STATE	ROADWAY 0006 RURAL
44213000	PATCHING REINFORCEMENT	SQ YD	5643	5643	
44213200	SAW CUTS	FOOT	15790	15790	
44213204	TIE BARS 3/4"	EACH	1641	1641	
67100100	MOBILIZATION	L SUM	1	1	
70100420	TRAFFIC CONTROL AND PROTECTION, STANDARD 701411	EACH	14	14	
70100700	TRAFFIC CONTROL AND PROTECTION, STANDARD 701406	L SUM	1	1	
70100800	TRAFFIC CONTROL AND PROTECTION, STANDARD 701401	L SUM	1	1	
70107025	CHANGEABLE MESSAGE SIGN	CAL DA	320	320	
* 78001130	PAINT PAVEMENT MARKING - LINE 6"	FOOT	5459	5459	
* 78100100	RAISED REFLECTIVE PAVEMENT MARKER	EACH	172	172	
X4420583	CLASS A PATCHES, TYPE II, 13 INCH (SPECIAL)	SQ YD	400	400	
X4420585	CLASS A PATCHES, TYPE III, 13 INCH (SPECIAL)	SQ YD	837	837	
∅ Z0076604	TRAINEES TRAINING PROGRAM GRADUATE	HOUR	1000	1000	
X4420587	CLASS A PATCHES, TYPE IV, 13 INCH (SPECIAL)	SQ YD	4405	4405	

* SPECIALTY ITEM
∅ 0042

MODEL: SOQ (Sheet)
FILE NAME: c:\p\work\wisconsin\intel\main\hd1191205176V10-plan_sheet.dgn

REV - MS

USER NAME = Jon.Dintelman	DESIGNED -	REVISED -	STATE OF ILLINOIS DEPARTMENT OF TRANSPORTATION	SUMMARY OF QUANTITIES			F.A.I. RTE.	SECTION	COUNTY	TOTAL SHEETS	SHEET NO.
	DRAWN -	REVISED -					057	61-(1-1,1-2,2,3,3-1,4,5,5-1,6)PP-1	MARION	11	3
	CHECKED -	REVISED -		SCALE: SHEET SOQ OF SHEETS STA. TO STA.			CONTRACT NO. 76V10				
PLOT DATE = 2/4/2026	DATE -	REVISED -					ILLINOIS FED. AID PROJECT				



EXISTING TYPICAL SECTION I-057

STA. 1571+00.00 TO STA. 1575+00.00

LEGEND

- ① EXISTING H.M.A. SURFACING (3 1/4")
- ② EXISTING H.M.A. SURFACING (4 1/2")
- ③ EXISTING H.M.A. SURFACING (4 3/4")
- ④ EXISTING C.R.P.C.C. PAVEMENT (8")
- ⑤ EXISTING STABILIZED SUB-BASE BITUMINOUS AGGREGATE MIXTURE (4")
- ⑥ EXISTING SUB-BASE GRANULAR MATERIAL, TYPE C (4")
- ⑦ EXISTING H.M.A. SHOULDERS (11 1/4")
- ⑧ EXISTING H.M.A. SHOULDERS (12 1/2")
- ⑨ EXISTING H.M.A. SHOULDERS (12 3/4")
- ⑩ EXISTING AGGREGATE SHOULDER WEDGE
- ⑪ EXISTING PIPE UNDERDRAINS (4")

MODEL: Typical 1 (Sheet)
FILE NAME: c:\pwworking\jondintelman\1191205176V10-plan sheet.dgn

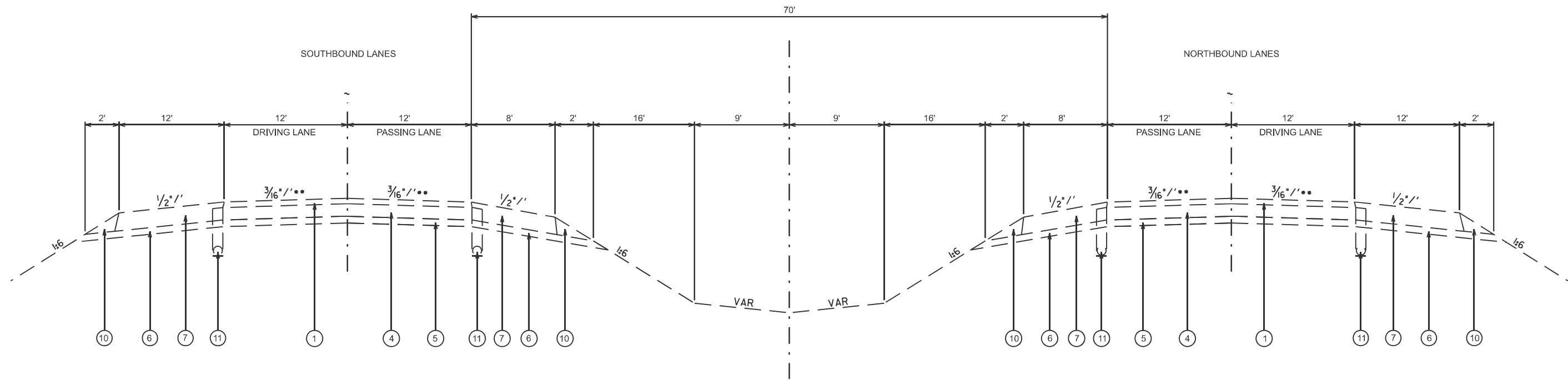
USER NAME = Jon.Dintelman	DESIGNED -	REVISED -
	DRAWN -	REVISED -
	CHECKED -	REVISED -
PLOT DATE = 2/4/2026	DATE -	REVISED -

**STATE OF ILLINOIS
DEPARTMENT OF TRANSPORTATION**

TYPICALS

SCALE: SHEET Typical 1 OF SHEETS STA. TO STA.

F.A.P. RTE.	SECTION	COUNTY	TOTAL SHEETS	SHEET NO.
057	61-(1-1,1-2,2,3,3-1,4,5,5-1,6)PP-1	MARION	11	4
CONTRACT NO. 76V10				
ILLINOIS FED. AID PROJECT				



EXISTING TYPICAL SECTION I-057
 STA. 1575+00.00 TO STA. 1874+15.00

LEGEND

- ① EXISTING H.M.A. SURFACING (3 1/4")
- ② EXISTING H.M.A. SURFACING (4 1/2")
- ③ EXISTING H.M.A. SURFACING (4 3/4")
- ④ EXISTING C.R.P.C.C. PAVEMENT (8")
- ⑤ EXISTING STABILIZED SUB-BASE BITUMINOUS AGGREGATE MIXTURE (4")
- ⑥ EXISTING SUB-BASE GRANULAR MATERIAL, TYPE C (4")
- ⑦ EXISTING H.M.A. SHOULDERS (11 1/4")
- ⑧ EXISTING H.M.A. SHOULDERS (12 1/2")
- ⑨ EXISTING H.M.A. SHOULDERS (12 3/4")
- ⑩ EXISTING AGGREGATE SHOULDER WEDGE
- ⑪ EXISTING PIPE UNDERDRAINS (4")

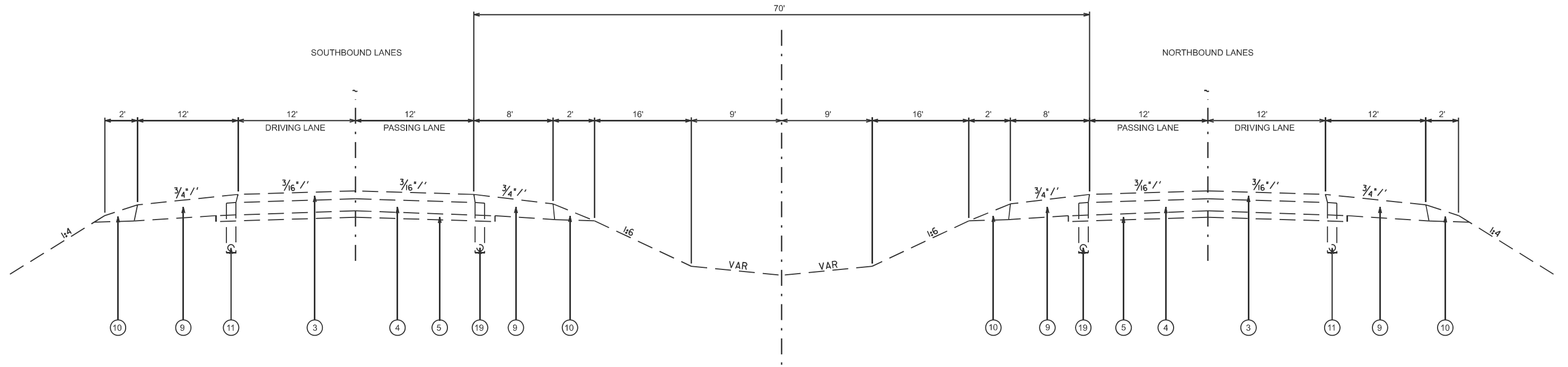
MODEL: Typical 2 (Sheet)
 FILE NAME: c:\p\work\wis\illinois\main\1191205176V10-plan_sheet.dgn

USER NAME = Jon.Dintelman	DESIGNED -	REVISED -
	DRAWN -	REVISED -
	CHECKED -	REVISED -
PLOT DATE = 2/4/2026	DATE -	REVISED -

**STATE OF ILLINOIS
 DEPARTMENT OF TRANSPORTATION**

TYPICALS	
SCALE:	SHEET Typical 2 OF SHEETS STA. TO STA.

F.A.I. RTE.	SECTION	COUNTY	TOTAL SHEETS	SHEET NO.
057	61-(1-1,1-2,2,3,3-1,4,5,5-1,6)PP-1	MARION	11	5
CONTRACT NO. 76V10				
ILLINOIS FED. AID PROJECT				



EXISTING TYPICAL SECTION I-057

STA. 1874+15.00 TO STA. 2862+79.00

LEGEND

- ① EXISTING H.M.A. SURFACING (3 1/4")
- ② EXISTING H.M.A. SURFACING (4 1/2")
- ③ EXISTING H.M.A. SURFACING (4 3/4")
- ④ EXISTING C.R.P.C.C. PAVEMENT (8")
- ⑤ EXISTING STABILIZED SUB-BASE BITUMINOUS AGGREGATE MIXTURE (4")
- ⑥ EXISTING SUB-BASE GRANULAR MATERIAL, TYPE C (4")
- ⑦ EXISTING H.M.A. SHOULDERS (11 1/4")
- ⑧ EXISTING H.M.A. SHOULDERS (12 1/2")
- ⑨ EXISTING H.M.A. SHOULDERS (12 3/4")
- ⑩ EXISTING AGGREGATE SHOULDER WEDGE
- ⑪ EXISTING PIPE UNDERDRAINS (4")

MODEL: Typical 3 (Sheet)
 FILE NAME: c:\p\work\road\dm\main\1191205176V10-plan_sheet.dgn

USER NAME = Jon.Dintelman	DESIGNED -	REVISED -
	DRAWN -	REVISED -
	CHECKED -	REVISED -
PLOT DATE = 2/4/2026	DATE -	REVISED -

**STATE OF ILLINOIS
DEPARTMENT OF TRANSPORTATION**

TYPICALS

SCALE: SHEET Typical 3 OF SHEETS STA. TO STA.

F.A.P. RTE.	SECTION	COUNTY	TOTAL SHEETS	SHEET NO.
057	61-(1-1,1-2,2,3,3-1,4,5,5-1,6)PP-1	MARION	11	6
CONTRACT NO. 76V10				
ILLINOIS FED. AID PROJECT				

MODEL: Schedule 2 (Sheet)
 FILE NAME: c:\pwworking\dmintelman\11912051761\0-dlan_sheet.dgn

Direction NB/SB	Driving Lane /Passing Lane	MM	Length	Width	CLASS A (SPECIAL) PATCHIES 13 INCH			SAW CUTS FOOT	PATCHING REINFORCEMENT SQ YD	TIE BARS 3/4" EACH	PAINT PAVEMENT MARKING - LINE 6"		RAISED REFLECTIVE PAVEMENT MARKER EACH
					Type II SQ YD	Type III SQ YD	Type IV SQ YD				SOLID FOOT	SKIP DASH FOOT	
SB	DL	133.9	55	12			73.3	194	73.3	11	55	14	1
SB	DL	133.0	15	12		20.0		54	20.0	11	15	4	1
SB	DL	132.9	12	12		16.0		48	16.0	11	12	3	1
SB	DL	132.9	12	12		16.0		48	16.0	11	12	3	1
SB	DL	132.5	15	12		20.0		54	20.0	11	15	4	1
SB	DL	132.5	10	12	13.3			44	13.3	11	10	3	1
SB	DL	132.5	8	12	10.7			40	10.7	11	8	2	1
SB	DI	132.4	8	12	10.7			40	10.7	11	8	2	1
SB	DL	132.4	15	12		20.0		54	20.0	11	15	4	1
SB	DL	132.4	25	12			33.3	98	33.3	11	25	6	1
SB	PL	132.4	15	12		20.0		54	20.0	11	15	4	1
SB	PL	132.4	12	12		16.0		48	16.0	11	12	3	1
SB	DL	132.3	35	12			46.7	130	46.7	11	35	9	1
SB	DL	132.3	20	12			26.7	64	26.7	11	20	5	1
SB	DL	132.3	20	12			26.7	64	26.7	11	20	5	1
SB	DL	132.2	30	12			40.0	120	40.0	11	30	8	1
SB	DL	132.2	8	12	10.7			40	10.7	11	8	2	1
SB	DL	132.2	12	12		16.0		48	16.0	11	12	3	1
SB	DL	132.2	15	12		20.0		54	20.0	11	15	4	1
SB	DL	132.2	8	12	10.7			40	10.7	11	8	2	1
SB	DL	132.2	20	12			26.7	64	26.7	11	20	5	1
SB	DL	132.1	15	12		20.0		54	20.0	11	15	4	1
SB	DL	132.1	15	12		20.0		54	20.0	11	15	4	1
SB	DL	132.1	10	12	13.3			44	13.3	11	10	3	1
SB	DL	132.0	10	12	13.3			44	13.3	11	10	3	1
SB	DL	132.0	40	12			53.3	152	53.3	11	40	10	1
SB	PL	131.9	22	12			29.3	92	29.3	11	22	6	1
SB	DL	131.9	30	12			40.0	120	40.0	11	30	8	1
SB	DL	131.9	15	12		20.0		54	20.0	11	15	4	1
SB	DL	131.8	15	12		20.0		54	20.0	11	15	4	1
SB	DL	131.8	25	12			33.3	98	33.3	11	25	6	1
SB	PL	131.8	10	12	13.3			44	13.3	11	10	3	1
SB	DL	131.8	45	12			60.0	162	60.0	11	45	11	1
SB	DL	131.8	65	12			86.7	226	86.7	11	65	16	2
SB	DL	131.8	50	6			33.3	142	33.3	11	50	13	1
SB	DL	131.7	12	12		16.0		48	16.0	5	12	3	1
SB	DL	131.7	55	12			73.3	194	73.3	11	55	14	1
SB	PL	131.7	12	12		16.0		48	16.0	11	12	3	2
SB	DL	131.7	80	12			106.7	280	106.7	11	80	20	1
SB	DL	131.7	35	6		23.3		100	23.3	11	35	9	1
SB	DL	131.7	20	12			26.7	64	26.7	5	20	5	1
SB	DL	131.6	10	12	13.3			44	13.3	11	10	3	1
SB	DL	131.6	20	12			26.7	64	26.7	11	20	5	1
SB	PL	131.6	25	12			33.3	98	33.3	11	25	6	1
SB	DL	131.6	40	12			53.3	152	53.3	11	40	10	1
SB	PL	131.6	60	12			80.0	216	80.0	11	60	15	2
SB	DL	131.6	40	12			53.3	152	53.3	11	40	10	1
SB	DL	131.6	80	12			106.7	280	106.7	11	80	20	1
SB	DL	131.5	15	12		20.0		54	20.0	11	15	4	1
SB	DL	131.5	35	12			46.7	130	46.7	11	35	9	1
SB	DL	131.5	20	12			26.7	64	26.7	11	20	5	1
SB	DL	131.5	50	12			66.7	184	66.7	11	50	13	1
SB	DL	130.8	65	12			86.7	226	86.7	11	65	16	2
SB	DL	130.7	30	12			40.0	120	40.0	11	30	8	1
SB	DL	130.7	10	12	13.3			44	13.3	11	10	3	1
SB	DL	130.6	15	12		20.0		54	20.0	11	15	4	1
SB	DL	130.5	35	12			46.7	130	46.7	11	35	9	1
SB	DL	130.5	30	12			40.0	120	40.0	11	30	8	1
SB	DL	130.5	35	12			46.7	130	46.7	11	35	9	1
SB	DL	130.5	18	12		24.0		60	24.0	11	18	5	1
SB	DL	130.5	22	12			29.3	92	29.3	11	22	6	1
SB	DL	130.5	15	12		20.0		54	20.0	11	15	4	1
SB	DL	130.4	25	12			33.3	98	33.3	11	25	6	1
SB	DL	130.4	35	12			46.7	130	46.7	11	35	9	1
SB	DL	130.3	55	12			73.3	194	73.3	11	55	14	2
SB	DL	130.3	20	12			26.7	64	26.7	11	20	5	1
SB	DL	130.3	18	12		24.0		60	24.0	11	18	5	1
SB	DL	130.2	12	12		16.0		48	16.0	11	12	3	1
SB	DL	130.2	65	12			86.7	226	86.7	11	65	16	2
SB	DL	130.2	30	12			40.0	120	40.0	11	30	8	1
SB	PL	130.1	55	12			73.3	194	73.3	11	55	14	2
SB	DL	130.1	100	12			133.3	344	133.3	11	100	25	2
SB	DL	130.1	18	12		24.0		60	24.0	11	18	5	1

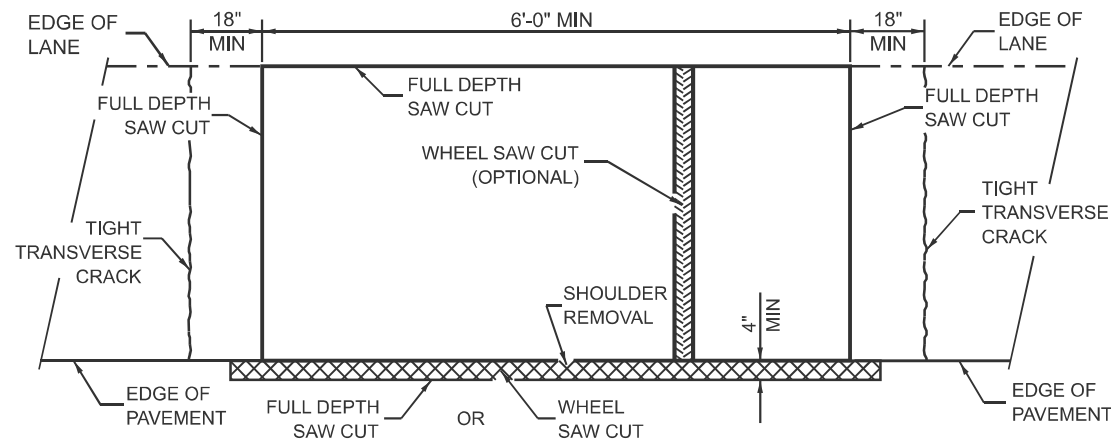
USER NAME = Jon.Dintelman	DESIGNED -	REVISED -
	DRAWN -	REVISED -
	CHECKED -	REVISED -
PLOT DATE = 2/4/2026	DATE -	REVISED -

**STATE OF ILLINOIS
DEPARTMENT OF TRANSPORTATION**

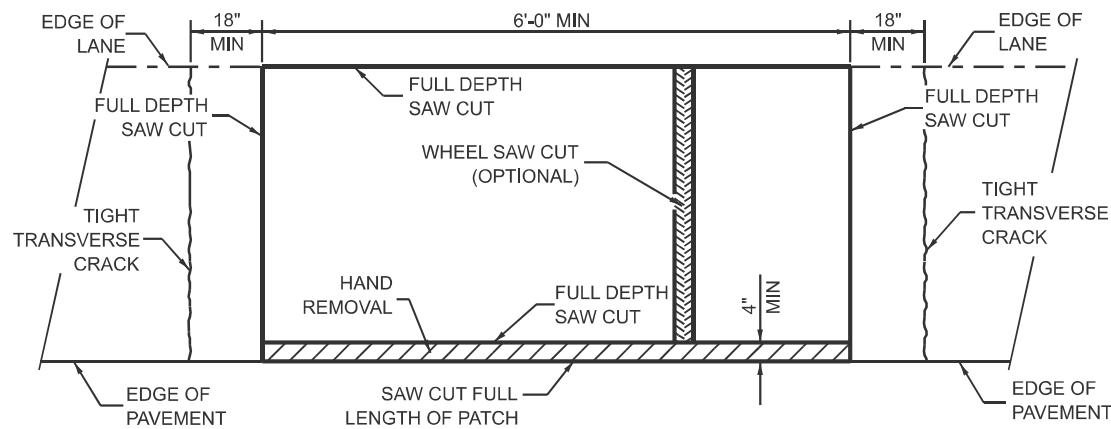
SCHEDULES

SCALE: SHEET Schedule 2 OF SHEETS STA. TO STA.

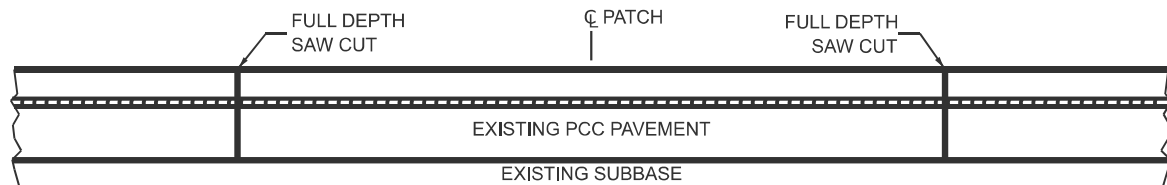
F.A.I. RTE.	SECTION	COUNTY	TOTAL SHEETS	SHEET NO.
057	61-1-1,1-2,2,3,3-1,4,5,5-1,6)PP-1	MARION	11	8
CONTRACT NO.				
ILLINOIS		FED. AID PROJECT		



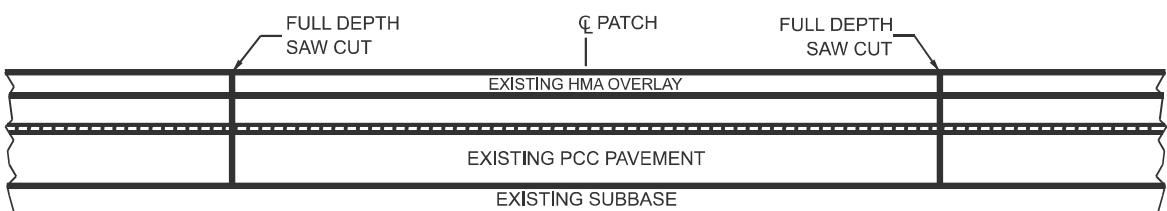
**PAVEMENT SAWING DETAIL
(HMA SHOULDER)**



**PAVEMENT SAWING DETAIL
(PCC SHOULDER)**

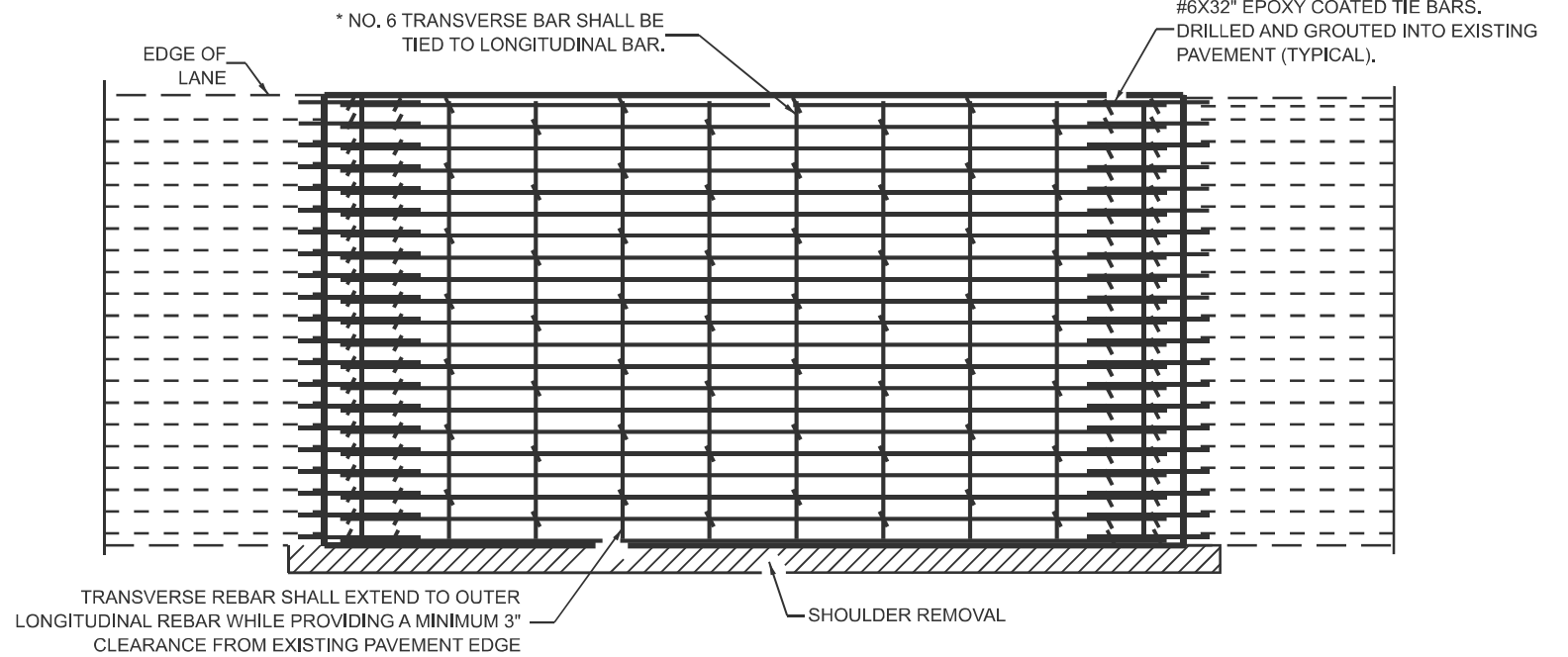


EXISTING PAVEMENT WITHOUT HMA SURFACE

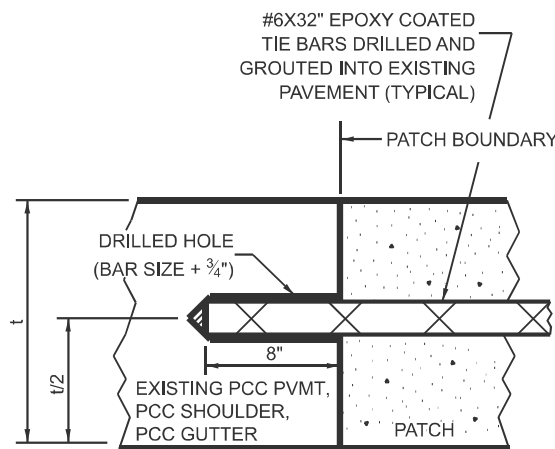


EXISTING PAVEMENT WITH HMA SURFACE

**PAVEMENT SAWING DETAIL FOR CLASS A PATCHING
(CRC PAVEMENT)**



PAVEMENT REINFORCEMENT DETAIL



LONGITUDINAL CONSTRUCTION JOINT

PATCHES MORE THAN 20' IN LENGTH SHALL BE TIED TO ADJACENT PAVEMENT, PCC SHOULDERS OR PCC CURB AND GUTTER WITH #6x32" EPOXY COATED TIE BARS AT 36" CENTERS.

NOTES:

EXISTING LONGITUDINAL REINFORCEMENT SPACING; $\pm 6\frac{1}{2}"$.

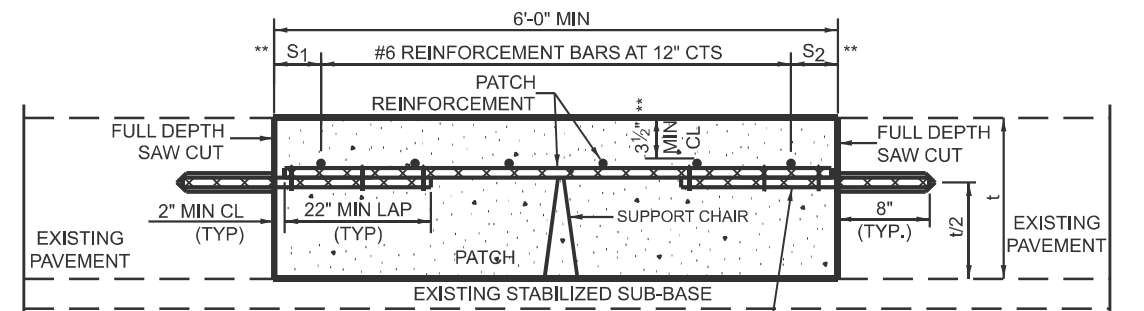
SPACING OF NEW LONGITUDINAL REINFORCEMENT AND NEW LONGITUDINAL TIE BARS SHALL MATCH SPACING OF EXISTING REINFORCEMENT AND SHALL BE TIED TOGETHER WITH A MINIMUM OF TWO TIES PER BAR.

SUPPORT CHAIRS SHALL BE REQUIRED WHENEVER PATCH LENGTH EXCEEDS 6'-0"

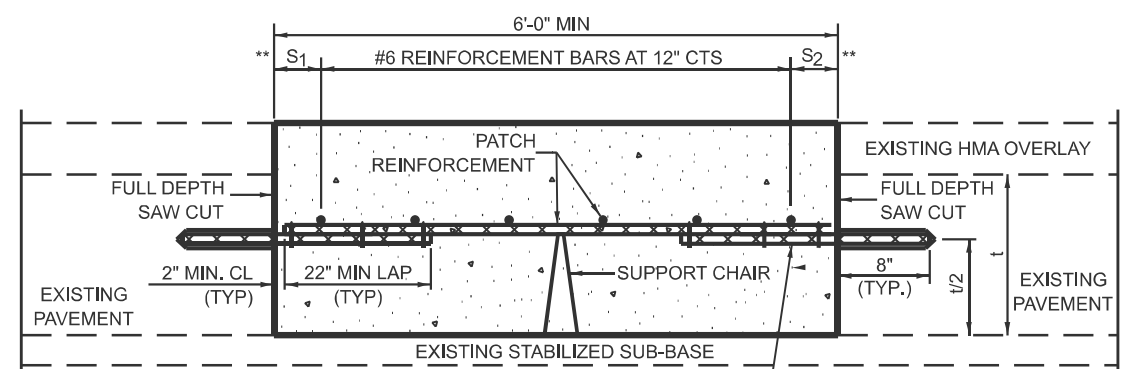
PATCHES GREATER THAN 20 FEET IN LENGTH SHALL REQUIRE AN ADDITIONAL TRANSVERSE SAW CUT EVERY 10 FEET.

* EVERY THIRD INTERSECTION MUST BE TIED. WHEN THE MINIMUM CLEARANCE CANNOT BE OBTAINED WITH THE TRANSVERSE REBAR ON TOP, THEN THE TRANSVERSE REBAR SHALL BE TIED TO THE BOTTOM OF THE LONGITUDINAL REBAR.

** VARIABLES WHERE S₁ AND S₂ ARE 2½" MIN. AND 12" MAX.



WITHOUT HMA OVERLAY



WITH HMA OVERLAY

**PATCHING DETAIL FOR CLASS A PATCHING
(CRC PAVEMENT)**

MODEL: Detail 1a (Sheet)
FILE NAME: c:\pva\work\auto\detail\main\1191205176V10-plan_sheet.dgn

USER NAME = Jon.Dintelman	DESIGNED -	REVISED -
	DRAWN -	REVISED -
	CHECKED -	REVISED -
PLOT DATE = 2/4/2026	DATE -	REVISED -

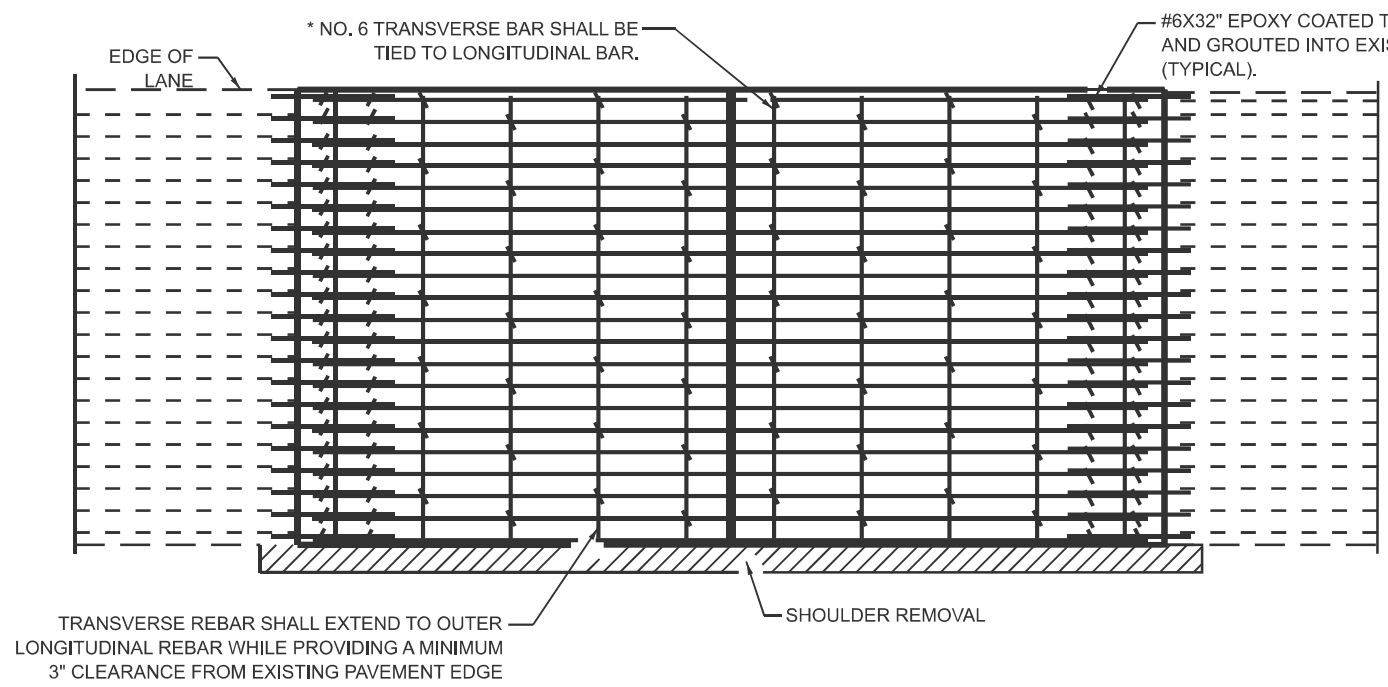
**STATE OF ILLINOIS
DEPARTMENT OF TRANSPORTATION**

CLASS A PATCH (SPECIAL) DETAIL

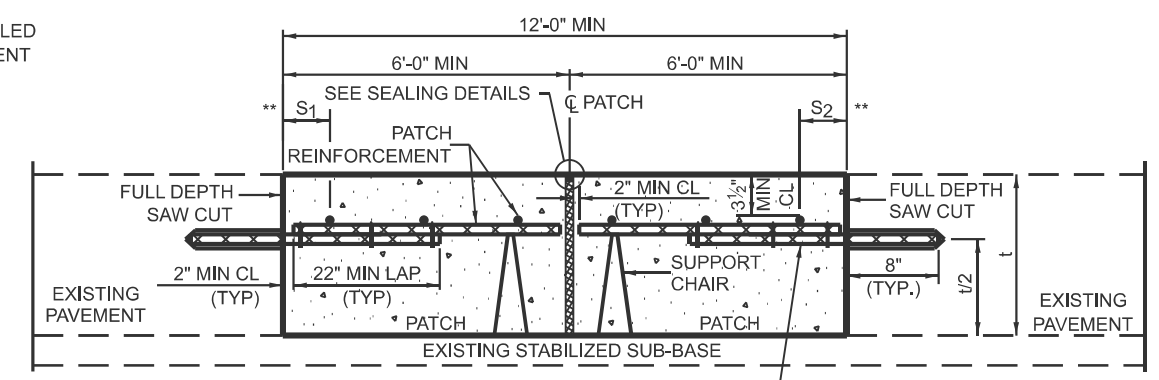
SCALE: SHEET OF SHEETS STA. TO STA.

F.A.I. RTE.	SECTION	COUNTY	TOTAL SHEETS	SHEET NO.
057	61-(1-1,1-2,2,3,3-1,4,5,5-1,6)PP-1	MARION	11	10
CONTRACT NO. 76V10				
ILLINOIS FED. AID PROJECT				

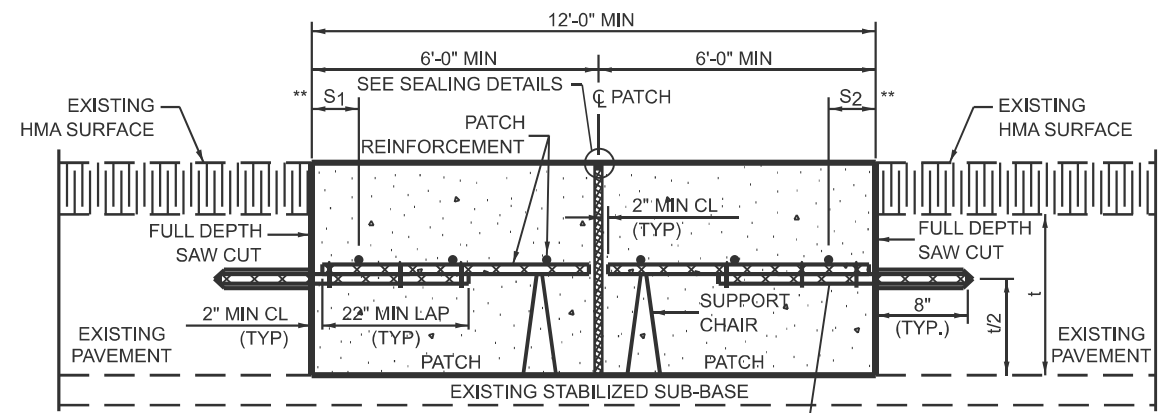
TRANSVERSE EXPANSION JOINTS



PAVEMENT REINFORCEMENT DETAIL

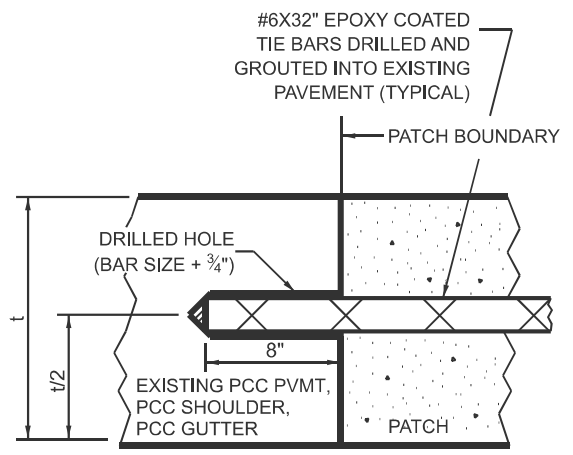


WITHOUT HMA OVERLAY



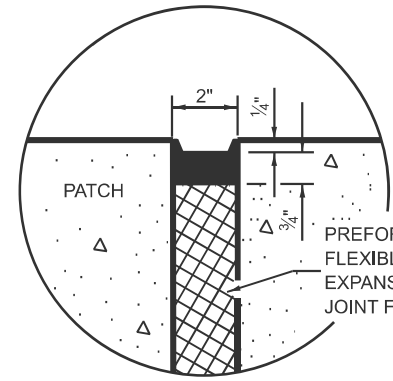
WITH HMA OVERLAY

CLASS A PATCH WITH EXPANSION JOINT

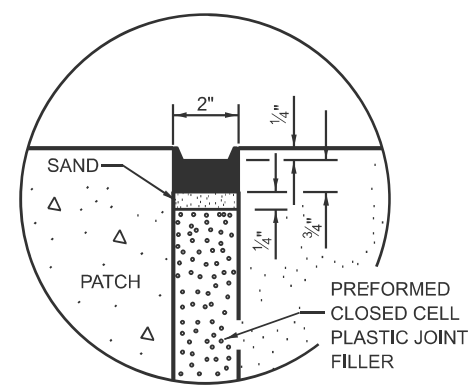


LONGITUDINAL CONSTRUCTION JOINT

PATCHES MORE THAN 20' IN LENGTH SHALL BE TIED TO ADJACENT PAVEMENT, PCC SHOULDERS OR PCC CURB AND GUTTER WITH #6x32" EPOXY COATED TIE BARS AT 36" CENTERS.



SEALING DETAIL



SEALING DETAIL

NOTES:

- EXISTING LONGITUDINAL REINFORCEMENT SPACING; $\pm 6\frac{1}{2}$ ".
- SPACING OF NEW LONGITUDINAL REINFORCEMENT AND NEW LONGITUDINAL TIE BARS SHALL MATCH SPACING OF EXISTING REINFORCEMENT AND SHALL BE TIED TOGETHER WITH A MINIMUM OF TWO TIES PER BAR.
- SUPPORT CHAIRS SHALL BE REQUIRED WHENEVER PATCH LENGTH EXCEEDS 6'-0"
- PATCHES GREATER THAN 20 FEET IN LENGTH SHALL REQUIRE AN ADDITIONAL TRANSVERSE SAW CUT EVERY 10 FEET.
- * EVERY THIRD INTERSECTION MUST BE TIED. WHEN THE MINIMUM CLEARANCE CANNOT BE OBTAINED WITH THE TRANSVERSE REBAR ON TOP, THEN THE TRANSVERSE REBAR SHALL BE TIED TO THE BOTTOM OF THE LONGITUDINAL REBAR.
- ** VARIABLES WHERE S₁ AND S₂ ARE 2½" MIN. AND 12" MAX.

MODEL: Detail 2 (Sheet)
FILE NAME: c:\pwr\work\wisconsin\main\1191205176170-clam_sheet.dgn

USER NAME = Jon.Dintelman	DESIGNED -	REVISED -
	DRAWN -	REVISED -
	CHECKED -	REVISED -
PLOT DATE = 2/4/2026	DATE -	REVISED -

**STATE OF ILLINOIS
DEPARTMENT OF TRANSPORTATION**

CLASS A PATCH (SPECIAL) DETAIL			
SCALE:	SHEET	OF SHEETS	STA. TO STA.

F.A.I. RTE.	SECTION	COUNTY	TOTAL SHEETS	SHEET NO.
057	61-1(1-1,1-2,2,3,3-1,4,5,5-1,6)PP-1	MARION	11	11
CONTRACT NO. 76V10				
ILLINOIS FED. AID PROJECT				