

FAU RTE.	SECTION	COUNTY	TOTAL SHEETS	SHEET NO.
8380	24-00031-00-SW	ST. CLAIR	24	1
FED. ROAD DIST. NO.	ILLINOIS	CONTRACT NO. 87687		

**INDEX OF SHEETS**

04-24-2026 LETTING ITEM 190

SHEET NO. ITEM

- 1 COVER SHEET
- 2 GENERAL NOTES, UTILITIES & COMMITMENTS
- 3-4 SUMMARY OF QUANTITIES
- 5 TYPICAL SECTION
- 6 SCHEDULE OF QUANTITIES
- 7-8 PLAN SHEETS
- 9-10 REMOVAL PLAN SHEETS
- 11-13 EROSION CONTROL, PAVEMENT MARKINGS, AND SIGNAGE SHEETS
- 14-16 GRADING DETAILS
- 17 CONSTRUCTION DETAILS
- 18-22 DRAINAGE DETAILS
- 23-24 EROSION CONTROL DETAILS

# PLANS FOR PROPOSED

**CITY OF MASCOUTAH, ILLINOIS**  
**SRTS MASCOUTAH BUMP-OUTS**  
**N COUNTY RD (FAU 9380)**  
**ST. CLAIR COUNTY**  
**SAFE ROUTES TO SCHOOL FUNDING**  
**SECTION 24-00031-00-SW**  
**PROJECT NO. MH6S(492)**  
**JOB NO. C-98-084-25**

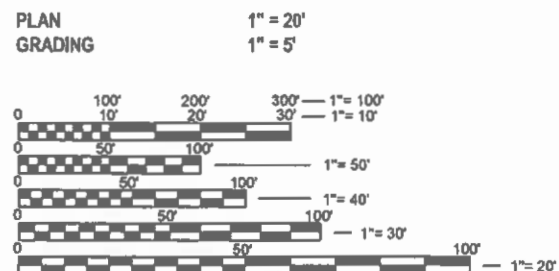


LOCATION OF SECTION INDICATED THUS:

**HIGHWAY STANDARDS**

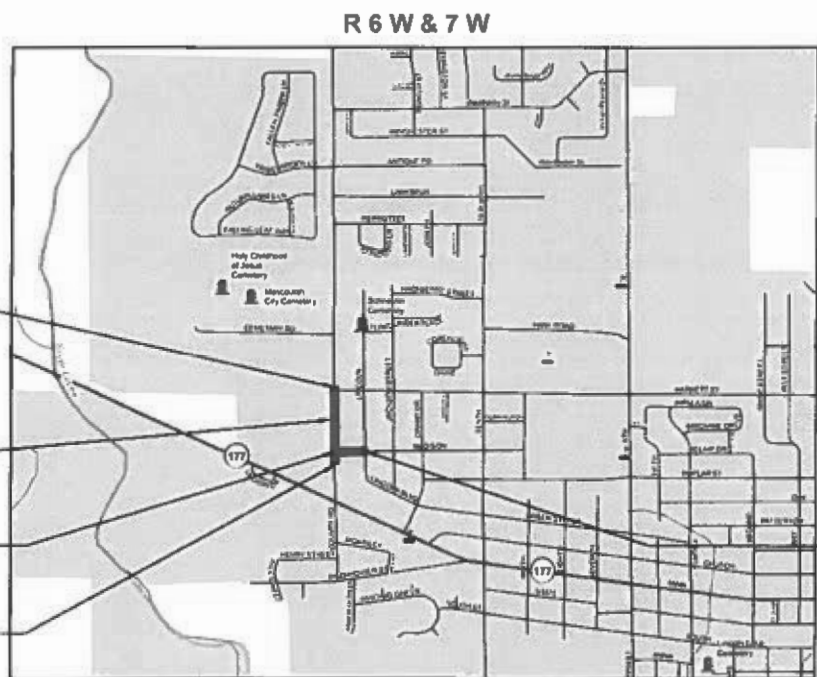
- 000001-09 STANDARD SYMBOLS, ABBREVIATIONS AND PATTERNS
- 001001-02 AREAS OF REINFORCEMENT BARS
- 001006 DECIMAL OF AN INCH AND OF A FOOT
- 280001-07 TEMPORARY EROSION CONTROL SYSTEMS
- 424001-12 PERPENDICULAR CURB RAMPS FOR SIDEWALKS
- 424016-06 MID-BLOCK CURB RAMPS FOR SIDEWALKS
- 442201-04 CLASS C&D PATCHES
- 602301-04 INLET TYPE A
- 602401-07 PRECAST MANHOLE TYPE A 4' DIAMETER
- 602601-06 PRECAST REINFORCED CONCRETE FLAT SLAB TOP
- 602701-02 MANHOLE STEPS
- 604006-05 FRAME AND GRATE TYPE 3
- 604021-04 BASE FRAME AND LID TYPE 5
- 606001-09 CONCRETE CURB TYPE B AND COMBINATION CONCRETE CURB AND GUTTER
- 701006-05 OFF-RD OPERATIONS 2L 2W 15' TO 24' FROM PAVEMENT EDGE
- 701301-04 LANE CLOSURE, 2L 2W, SHORT TIME OPERATIONS
- 701501-06 URBAN LANE CLOSURE, 2L 2W, UNDIVIDED
- 701801-06 SIDEWALK, CORNER OR CROSSWALK CLOSURE
- 701901-11 TRAFFIC CONTROL DEVICES
- 720001-01 SIGN PANEL MOUNTING DETAILS
- 720006-04 SIGN PANEL ERECTION DETAILS
- 720011-01 METAL POSTS FOR SIGNS MARKERS AND DELINEATORS
- 729001-01 APPLICATIONS OF TYPE A AND B METAL POSTS
- 780001-05 TYPICAL PAVEMENT MARKINGS
- B.L.R. 17-4 TRAFFIC CONTROL DEVICES - DAY LABOR CONSTRUCTION
- B.L.R. 18-6 TRAFFIC CONTROL DEVICES - DAY LABOR MAINTENANCE
- B.L.R. 21-9 TYPICAL APPLICATION OF TRAFFIC CONTROL DEVICES FOR CONSTRUCTION ON RURAL LOCAL HIGHWAYS

**SCALE IN FEET**



FULL SIZE PLANS HAVE BEEN PREPARED USING STANDARD ENGINEERING SCALES. REDUCED SIZED PLANS WILL NOT CONFORM TO STANDARD SCALES. IN MAKING MEASUREMENTS ON REDUCED PLANS, THE ABOVE SCALES MAY BE USED.

J.U.L.I.E.  
 JOINT UTILITY LOCATION INFORMATION FOR EXCAVATION  
 1-800-892-0123  
 OR 811



**LOCATION MAP**

SCALE: 1" = 1000'



PROJECT LOCATION

END IMPROVEMENTS  
 N COUNTY RD  
 STA. 22+96

BEGIN IMPROVEMENTS  
 W MADISON ST  
 STA. 100+00

BEGIN IMPROVEMENTS  
 N COUNTY RD  
 STA. 9+34

T 1 N

END IMPROVEMENTS  
 W MADISON ST  
 STA. 103+49.96

CITY OF MASCOUTAH	
APPROVED	<u>12/18/25</u> (Date) <i>Walter Battas</i> (Signature) WALTER BATTAS, MAYOR
PASSED	<u>12/22/25</u> (Date) <i>[Signature]</i> (Signature) District # 8 Engineer of Local Roads & Streets
RELEASING FOR BID BASED ON LIMITED REVIEW	<u>122225</u> (Date) <i>Kansil A. Garnatt</i> (Signature) Deputy Director of Highways, Region # 5 Engineer



1 South Church  
 Street, Suite 200  
 Belleville IL 62220  
 618.416.4688  
 www.oatesassociates.com  
 Collinsville St. Louis Belleville St. Charles  
 ILLINOIS DESIGN FIRM LICENSE NO. 164.001118

LICENSE EXPIRES: 11/30/2027 BRANDON B. BECKEMEYER DATE: 11/26/2025

# GENERAL NOTES

## UTILITIES

- EXISTING UNDERGROUND FACILITIES, STRUCTURES AND UTILITIES HAVE BEEN PLOTTED FROM AVAILABLE SURVEYS AND RECORDS. THEIR LOCATIONS MUST BE CONSIDERED TO BE APPROXIMATE ONLY. IT IS POSSIBLE THERE MAY BE OTHERS, THE EXISTENCE OF WHICH IS NOT PRESENTLY KNOWN OR SHOWN. IT IS THE CONTRACTORS RESPONSIBILITY TO DETERMINE THEIR EXISTENCE AND EXACT LOCATION AND TO AVOID DAMAGE THERETO. ILLINOIS LAW REQUIRES A MINIMUM 48-HOUR NOTICE TO ALL UTILITY COMPANIES BEFORE DIGGING. FIELD LOCATIONS OF UNDERGROUND FACILITIES MAY BE OBTAINED BY CALLING THE J.U.L.I.E. SYSTEM AT 800-892-0123 AND PROVIDING 72 HOURS ADVANCE NOTICE. NON-J.U.L.I.E. MEMBERS MUST BE CONTACTED DIRECTLY. AGENCIES KNOWN TO HAVE FACILITIES WITHIN THE PROJECT LIMITS ARE LISTED BELOW.
- ANY FACILITIES OR APPURTENANCES WHICH ARE THE PROPERTY OF ANY PUBLIC UTILITY LOCATED WITHIN THE LIMITS OF CONSTRUCTION SHALL BE RELOCATED OR ADJUSTED BY THEIR RESPECTIVE OWNERS. THE CONTRACTOR SHALL NOTIFY AND COOPERATE WITH THE OWNERS OF ANY SUCH FACILITY IN THEIR REMOVAL AND REARRANGEMENT OPERATIONS IN ORDER THAT THESE OPERATIONS AND THE CONSTRUCTION OF THIS PROJECT MAY PROGRESS IN A REASONABLE MANNER. THE COST OF ANY NECESSARY RELOCATIONS SHALL BE INCURRED BY THE OWNER UNLESS NOTED OTHERWISE AND IF PRIOR AGREEMENTS ARE NOT IN PLACE.
- THE FOLLOWING UTILITY COMPANIES MAY HAVE FACILITIES LOCATED WITHIN THE LIMITS OF CONSTRUCTION WHICH MAY REQUIRE ADJUSTMENT, RELOCATION OR REMOVAL. ALL ARE MEMBERS OF J.U.L.I.E. UNLESS NOTED OTHERWISE.

AMEREN ILLINOIS (GAS AND GAS)  
1050 WEST BOULEVARD  
BELLEVILLE, IL 62221  
(618) 236-6279

CHARTER COMMUNICATIONS (CABLE TV)  
20 CARLYLE PLAZA DR  
BELLEVILLE, IL 62221  
(618) 663-3075

FRONTIER (COMMUNICATIONS)  
111 STATE STREET  
MASCOUTAH, IL 62258  
(618) 566-9815

CITY OF MASCOUTAH (WATER, SANITARY, STORM, & ELECTRIC)  
3 WEST MAIN STREET  
MASCOUTAH, IL 62258  
(618) 566-2964

CLEARWAVE AND FIDELITY (COMMUNICATIONS)  
2 N VINE STREET  
HARRISBURG, IL 62946  
(912) 755-1527

THE ABOVE INFORMATION REPRESENTS THE BEST INFORMATION AVAILABLE TO THE OWNER AND IS ONLY INCLUDED FOR THE CONVENIENCE OF THE BIDDER. IT IS UNDERSTOOD AND AGREED THAT THE CONTRACTOR HAS TAKEN THE FOREGOING INTO CONSIDERATION IN PREPARING HIS/HER BID, AND NO ADDITIONAL COMPENSATION WILL BE ALLOWED FOR ANY DELAYS OR INCONVENIENCE CAUSED BY SAME.

JOINT UTILITY LOCATING INFORMATION FOR EXCAVATIONS  
800-892-0123

## GENERAL

- THE CONTRACTOR SHALL VERIFY ALL DIMENSIONS AND CONDITIONS IN THE FIELD PRIOR TO ORDERING MATERIALS AND COMMENCING CONSTRUCTION.
- THE CONTRACTOR SHALL CONFINE ALL OPERATIONS TO THE CONSTRUCTION LIMITS LINE SHOWN ON THE PLANS. ANY AREA DISTURBED BEYOND THESE LIMITS SHALL BE RESTORED TO ITS ORIGINAL CONDITION AT THE CONTRACTOR'S EXPENSE.
- THE CONTRACTOR SHALL FERTILIZE, SEED AND MULCH ALL EARTH SURFACES DISTURBED BY CONSTRUCTION. FERTILIZER, SEEDING AND MULCH WITHIN THE CONSTRUCTION LIMITS WILL BE PAID FOR AS PROVIDED IN THE CONTRACT. FERTILIZER, SEEDING AND MULCH OUTSIDE THESE LIMITS WILL NOT BE MEASURED FOR PAYMENT. SEE THE SEEDING SCHEDULE FOR ESTIMATED PLAN QUANTITIES.
- WHERE TREE REMOVAL CONFLICTS WITH EXISTING UNDERGROUND UTILITIES, THE CONTRACTOR SHALL CUT THE TREE OFF AT THE GROUND LINE AND GRIND THE STUMP AS DIRECTED BY THE ENGINEER. THE COST OF THIS WORK WILL NOT BE PAID FOR SEPARATELY, BUT SHALL BE CONSIDERED AS INCLUDED IN THE CONTRACT UNIT PRICE FOR THE VARIOUS TREE REMOVAL ITEMS INCLUDED IN THE CONTRACT.

## PAVING

- AT VARIOUS LOCATIONS, IT MAY BE NECESSARY TO TRANSITION PROPOSED COMBINATION CONCRETE CURB AND GUTTER TO MEET EXISTING CURBS OR GUTTERS. THE MINIMUM LENGTH OF TRANSITIONAL COMBINATION CURB AND GUTTER SHALL BE 10 FEET, UNLESS DIRECTED OTHERWISE BY THE ENGINEER.

## DRAINAGE

- STORM SEWER INVERTS SHOWN ON THE PLANS HAVE BEEN CALCULATED TO THE CENTER OF THE STRUCTURE. THE STORM SEWER SLOPES SHOWN ON THE PLANS ARE THE PERCENT GRADE FROM CENTER TO CENTER OF STRUCTURE. THE LENGTH OF STORM SEWERS SHOWN ON THE PLANS IS THE DISTANCE FROM CENTER TO CENTER OF STRUCTURE. STORM SEWER WILL BE MEASURED AND PAID FOR AS SPECIFIED IN ARTICLES 550.09 AND 550.10 OF THE "STANDARD SPECIFICATIONS FOR ROAD AND BRIDGE CONSTRUCTION."
- THE OFFSETS TO ALL INLETS AND MANHOLES ARE GIVEN TO THE CENTER OF THE OPENING AT THE BASE OF THE FRAME AND GRATE OR LID. CONCENTRIC DRAINAGE STRUCTURES WERE ASSUMED WHEN CALCULATING THESE DIMENSIONS.
- THE CONTRACTOR SHALL INCLUDE THE COST OF MAKING CONNECTIONS TO EXISTING DRAINAGE STRUCTURES IN THE CONTRACT UNIT PRICE FOR THE STORM SEWER ITEMS INVOLVED.

## PAVEMENT MARKING

- THE PAVEMENT MARKING LOCATIONS SHOWN IN THE PLANS ARE APPROXIMATE. PROPOSED CROSSWALKS AND STOP BARS SHALL BE ADJUSTED AS DIRECTED BY THE ENGINEER, IF NECESSARY, TO MATCH FIELD CONDITIONS.

## APPROXIMATE QUANTITIES

- THE FOLLOWING ITEMS AND APPROXIMATE QUANTITIES ARE INCLUDED IN THE "SUMMARY OF QUANTITIES" IN ORDER TO ESTABLISH A UNIT COST FOR WORK WHICH MAY BE REQUIRED TO CONSTRUCT THIS SECTION. THE ACTUAL QUANTITY OF EACH ITEM SHALL BE DETERMINED BY THE ENGINEER IN THE FIELD.

POTHOLING 5 EACH  
TOPSOIL F & P SPL 30 CU YD

## COMMITMENTS

NONE

## ABBREVIATIONS

AD ALGEBRAIC DIFFERENCE IN GRADE  
ADJ ADJACENT  
AGG AGGREGATE  
AI AREA INLET  
ALT ALTERNATE  
APPROX APPROXIMATE  
BC BACK OF CURB  
BIT BITUMINOUS  
BLDG BUILDING  
BLRD BOLLARD  
BM BENCHMARK  
BO BY OTHERS (USED IN CONJUNCTION WITH TBA & TBR)  
BVCE BEGINNING OF VERTICAL CURVE ELEVATION  
BVCS BEGINNING OF VERTICAL CURVE STATION  
BW BOTTOM OF WALL  
CATV CABLE TELEVISION  
CB CATCH BASIN  
CI CURB INLET  
CIPP CURED IN-PLACE PIPE (LINER)  
CJ CONTROL JOINT  
CL CENTERLINE  
CLF CHAIN LINK FENCE  
CMP CORRUGATED METAL PIPE  
CMU CONCRETE MASONRY BLOCK  
CO CLEANOUT  
COM COMMUNICATIONS  
CONC CONCRETE  
CONST CONSTRUCTION  
CP CONTROL POINT

CTR CENTER  
CY CUBIC YARD  
DIA DIAMETER  
DND DO NOT DISTURB  
DS DOWN SPOUT  
DTL DETAIL  
E EAST  
EA EACH  
EJ EXPANSION JOINT  
EL ELEVATION  
ELEC ELECTRIC  
ENGR ENGINEER  
EOP EDGE OF PAVEMENT  
EQ EQUAL  
ESMT EASEMENT  
ETR EXISTING TO REMAIN STATION  
EVCE END OF VERTICAL CURVE ELEVATION  
EVCS END OF VERTICAL CURVE STATION  
EX EXISTING  
EXP EXPANSION  
FES FLARED END SECTION  
FF FINISHED FLOOR  
FL FLOW LINE  
FO FIBER OPTIC  
FT FEET  
FV FIELD VERIFY  
GI GRATE INLET  
GND GROUND  
HDPE HIGH DENSITY POLYETHYLENE  
HMA HOT-MIX-ASPHALT  
HT HEIGHT  
HVAC HEATING/ VENTILATION/AIR

ID INSIDE DIAMETER  
IN INCHES  
INV INVERT  
JB JUNCTION BOX  
K LENGTH OF VERTICAL CURVE PER PERCENT GRADE DIFFERENCE  
LF LINEAR FEET  
MAT MATERIAL  
MAX MAXIMUM  
MECH MECHANICAL  
MH MANHOLE  
MIN MINIMUM  
MISC MISCELLANEOUS  
N NORTH  
NF NOW OR FORMERLY  
NIC NOT IN CONTRACT  
NO NUMBER  
NTS NOT TO SCALE  
OC OIL AND CHIP  
OC ON CENTER  
OD OUTSIDE DIAMETER  
PERM PERMANENT  
PL PROPERTY LINE  
PVC POLYVINYL CHLORIDE PIPE  
PVI POINT OF VERTICAL INTERSECTION  
PVMT PAVEMENT  
QTY QUANTITY  
R RADIUS  
RCP REINFORCED CONCRETE PIPE  
RD ROOF DRAIN  
ROW RIGHT OF WAY

## LEGEND

EX	NEW	
		SIGN (TRAFFIC)
		SIGN (ADVERTISEMENT)
		TELEPHONE / POWER POLE
		LIGHT POLE
		ANCHOR POLE
		GUY WIRE
		FIRE HYDRANT
		GAS VALVE
		WATER VALVE
		ELECTRIC METER
		GAS METER
		TELEPHONE BOX
		ELECTRIC BOX
		MAILBOX
		CLEANOUT

EX	NEW	
		AREA INLET
		CATCH BASIN
		CURB INLET
		MANHOLE
		TRAFFIC SIGNAL BOX
		TRAFFIC SIGNAL
		HANDHOLE
		SHRUB
		TREE (DECIDUOUS)
		TREE (EVERGREEN)
		CONTROL POINT
		BENCHMARK

## LINETYPES

EX		NEW
	WATER LINE	
	GAS LINE	
	TELEPHONE LINE	
	OVERHEAD ELECTRIC LINE	
	ELECTRIC LINE	
	FIBER OPTIC LINE	
	STORM SEWER	
	SANITARY SEWER	
	FENCE LINE	
	TREE LINE	
	CONTOUR LINE	
	LIMITS OF CONST	

FILE NAME = 222157.008 - COVER SHEET.DWG



USER NAME = CAMERON RAMIREZ	DESIGNED - BRB	REVISED -
PLOT SCALE = 1" = 1'	DRAWN - CJR	REVISED -
PLOT DATE = 2025-12-22	CHECKED - TLC	REVISED -
	DATE - 2025-12-22	REVISED -

CITY OF MASCOUTAH

## GENERAL NOTES, UTILITIES, & COMMITMENTS

SCALE: SHEET NO. 1 OF 1 SHEETS STA. TO STA.

F.A.U RTE.	SECTION	COUNTY	TOTAL SHEETS	SHEET NO.
9380	24-00031-00-SW	ST. CLAIR	24	2
SRTS MASCOUTAH BUMP-OUTS			CONTRACT NO. 97887	
FED. ROAD DIST. NO. ILLINOIS				

FILE NAME = 222157.008 - COVER SHEET.DWG

SI	SP	CODE NO.	ITEM	UNIT	TOTAL QUANTITY
	*	20100210	TREE REMOVAL (OVER 15 UNITS DIAMETER)	UNIT	30
	*	20800150	TRENCH BACKFILL	CU YD	20
	*	21400100	GRADING AND SHAPING DITCHES	FOOT	20
		28000500	INLET AND PIPE PROTECTION	EACH	15
		31101200	SUBBASE GRANULAR MATERIAL, TYPE B 4"	SQ YD	274
		42400100	PCC CONCRETE SIDEWALK, 4 INCH	SQ FT	2083
		42400300	PCC CONCRETE SIDEWALK, 6 INCH	SQ FT	380
	*	42400800	DETECTABLE WARNINGS	SQ FT	102
		44000100	PAVEMENT REMOVAL	SQ YD	87
		44000500	COMBINATION CURB AND GUTTER REMOVAL	FOOT	193
		44000600	SIDEWALK REMOVAL	SQ FT	1881
	*	44201745	CLASS D PATCHES, TYPE III, 8 INCH	SQ YD	21
	*	50105220	PIPE CULVERT REMOVAL	FOOT	20

SI	SP	CODE NO.	ITEM	UNIT	TOTAL QUANTITY
		54248510	CONCRETE COLLAR	CU YD	3
	*	55100700	STORM SEWER REMOVAL 15"	FOOT	24
	*	60218500	MANHOLES, TYPE A, 4'-DIAMETER, TYPE 3 FRAME AND GRATE	EACH	1
		60604400	CONCRETE CURB AND GUTTER, TYPE B-6.18	FOOT	250
		67100100	MOBILIZATION	L SUM	1
	*	72000100	SIGN PANEL TYPE 1	SQ FT	132
		72400100	REMOVE SIGN PANEL ASSEMBLY - TYPE A	EACH	2
	*	72900100	METAL POST - TYPE A	FOOT	56
	*	73000100	WOOD SIGN SUPPORT	FOOT	56
	*	78000200	THERMOPLASTIC PAVEMENT MARKING - LINE 4"	FOOT	172
	*	78000600	THERMOPLASTIC PAVEMENT MARKING - LINE 12"	FOOT	13
	*	78000650	THERMOPLASTIC PAVEMENT MARKING - LINE 24"	FOOT	371
	*	550A0050	STORM SEWERS, CLASS A, TYPE 1 12"	FOOT	58

NOTES: SP - SEE PROJECT SPECIFIC SPECIAL PROVISIONS  
SI - SPECIALTY ITEM



USER NAME =	CAMERON RAMIREZ	DESIGNED -	BRB	REVISED -	
		DRAWN -	CJR	REVISED -	
PLOT SCALE =	1' = 1'	CHECKED -	TLC	REVISED -	
PLOT DATE =	2025-12-22	DATE -	2025-12-22	REVISED -	

CITY OF MASCOUATAH

**SUMMARY OF QUANTITIES**

SCALE: SHEET NO. 1 OF 2 SHEETS STA. \_\_\_\_\_ TO STA. \_\_\_\_\_

F.A.U. RTE.	SECTION	COUNTY	TOTAL SHEETS	SHEET NO.
9380	24-00031-00-SW	ST. CLAIR	24	3
SRTS MASCOUATAH BUMP-OUTS			CONTRACT NO. 97887	
FED. ROAD DIST. NO. _____		ILLINOIS		

SI	SP	CODE NO.	ITEM	UNIT	TOTAL QUANTITY
	*	550A0070	STORM SEWERS, CLASS A, TYPE 1 15"	FOOT	44
	*	X0320050	CONSTRUCTION LAYOUT (SPECIAL)	L SUM	1
	*	X1200073	MANHOLE REMOVAL	EACH	1
	*	X1700066	POTHOLING	EACH	5
	*	X2110100	TOPSOIL FURNISH AND PLACE (SPECIAL)	CU YD	30
	*	X2500920	SEEDING, CLASS 1A (SPECIAL)	ACRE	0.25
	*	X6010202	TRENCH DRAIN	EACH	1
	*	X6023212	INLETS, TYPE A, WITH SPECIAL FRAME AND GRATE (SPECIAL)	EACH	1
	*	X6024242	INLETS, SPECIAL, NO. 1	EACH	1
	*	X6024244	INLETS, SPECIAL, NO. 2	EACH	1
	*	X6024246	INLETS, SPECIAL, NO. 3	EACH	1
	*	X6050310	FILLING INLETS (SPECIAL)	EACH	1
	*	X6050500	REMOVE FRAME AND GRATES (SPECIAL)	EACH	1

SI	SP	CODE NO.	ITEM	UNIT	TOTAL QUANTITY
	*	X7010216	TRAFFIC CONTROL AND PROTECTION (SPECIAL)	L SUM	1
*	*	Z0033058	POST MOUNTED FLASHING BEACON INSTALLATION (SPECIAL)	EACH	4
	*	XX009748	POP-UP ROOF DRAINS	EACH	1

NOTES: SP - SEE PROJECT SPECIFIC SPECIAL PROVISIONS  
SI - SPECIALTY ITEM

FILE NAME = 222157.008 - COVER SHEET.DWG



USER NAME = CAMERON RAMIREZ	DESIGNED - BRB	REVISED -
PLOT SCALE = 1' = 1'	DRAWN - CJR	REVISED -
PLOT DATE = 2025-12-22	CHECKED - TLC	REVISED -
	DATE - 2025-12-22	REVISED -

CITY OF MASCOUTAH

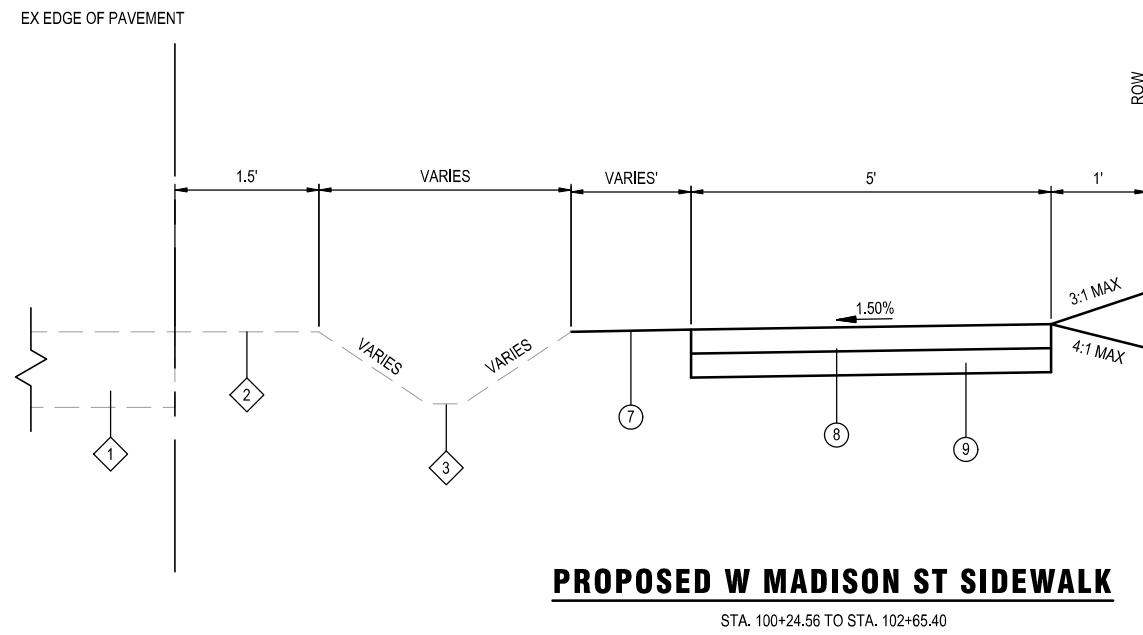
**SUMMARY OF QUANTITIES**

SCALE: SHEET NO. 2 OF 2 SHEETS STA. \_\_\_\_\_ TO STA. \_\_\_\_\_

F.A.U. RTE. 9380	SECTION 24-00031-00-SW	COUNTY ST. CLAIR	TOTAL SHEETS 24	SHEET NO. 4
SRTS MASCOUTAH BUMP-OUTS			CONTRACT NO. 97887	
FED. ROAD DIST. NO. _____		ILLINOIS		

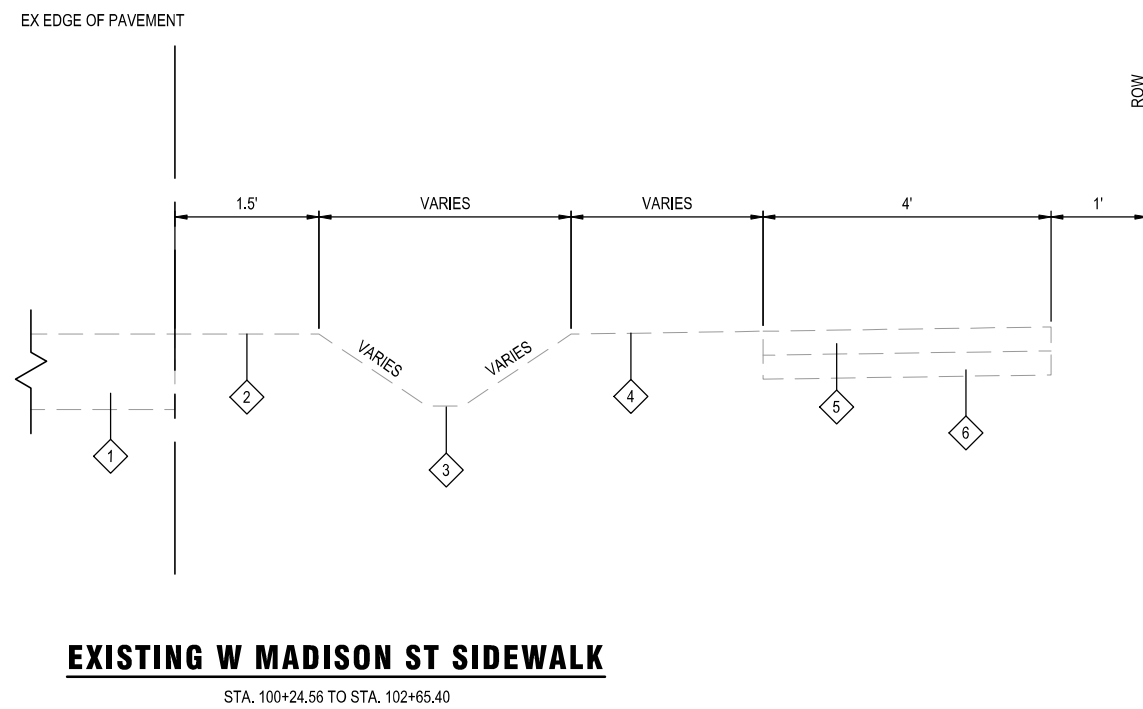
**TYPICAL SECTION LEGEND**

- 1 EXISTING OIL AND CHIP PAVEMENT
- 2 EXISTING SHOULDER
- 3 EXISTING EARTHEN DITCH
- 4 EXISTING TOPSOIL
- 5 EXISTING PC CONC SIDEWALK
- 6 EXISTING SUB GRAN MAT B
- 7 PROPOSED TOPSOIL FURNISH & PLACE
- 8 PROPOSED PC CONC SIDEWALK 4"
- 9 PROPOSED SUB GRAN MAT B 4"



**PROPOSED W MADISON ST SIDEWALK**

STA. 100+24.56 TO STA. 102+65.40



**EXISTING W MADISON ST SIDEWALK**

STA. 100+24.56 TO STA. 102+65.40

LOCATION	SURFACE COURSE
MIXTURE USE	HMA SURFACING
THICKNESS	8"
AC/PG	PG 64-22
RAP % (MAX)	5%
DESIGN AIR VOIDS	4.0% @ NDES = 70
MIX COMPOSITION	IL-9.5
FRICTION AGG	MIXTURE "C"
MIXTURE WEIGHT	112.0 LB/SQ YD/IN
QMP	QC/QA
SUBLOT SIZE	N/A
MTD	N/A

**HMA MIXTURES TABLE**

FILE NAME = 222157.008 - SRTS BUMP-OUT DESIGN.DWG

**OATES ASSOCIATES**  
www.oatesassociates.com  
ILLINOIS DESIGN FIRM LICENSE NO.: 184.001115

USER NAME =	CAMERON RAMIREZ	DESIGNED -	BRB	REVISED -	
PLOT SCALE =	1' = 1'	DRAWN -	CJR	REVISED -	
PLOT DATE =	2025-12-22	CHECKED -	TLC	REVISED -	
		DATE -	2025-12-22	REVISED -	

CITY OF MASCOUTAH

**TYPICAL SECTIONS**

SCALE: SHEET NO. 1 OF 1 SHEETS STA. \_\_\_\_\_ TO STA. \_\_\_\_\_

F.A.U RTE.	SECTION	COUNTY	TOTAL SHEETS	SHEET NO.
9380	24-00031-00-SW	ST. CLAIR	24	5
SRTS MASCOUTAH BUMP-OUTS			CONTRACT NO. 97887	
FED. ROAD DIST. NO. _____ ILLINOIS				

**SIDEWALK**

STATION	STATION	OFFSET	SUB GRAN MAT B 4 (SQ YD)	PC CONC SIDEWALK 4 (SQ FT)	PC CONC SIDEWALK 6 (SQ FT)	DETECTABLE WARNINGS (SQ FT)	SIDEWALK REM (SQ FT)
10+00	10+50	RT	10	68	22	10	77
11+75	12+40	RT	24	124	91	18	148
12+00	12+40	LT	17	71	82	18	178
16+40	17+65	RT	49	324	117	36	338
100+15	103+50	RT	174	1497	68	20	1141
<b>TOTAL</b>			<b>274</b>	<b>2,083</b>	<b>380</b>	<b>102</b>	<b>1,881</b>

**SIDEWALK NOTES:**

1. PRIOR TO CONSTRUCTION, THE CONTRACTOR SHALL CONTACT EACH PROPERTY OWNER AND VERIFY THE LOCATION AND WIDTH OF ALL APPROACH WALKWAYS.
2. SEE CONSTRUCTION DETAILS SHEET AND HIGHWAY STANDARD 424001 FOR CURB RAMP DETAILS.

**PAVEMENT MARKING**

STATION	STATION	OFFSET	THPL PVT MK LINE 4 (YELLOW) (NOTE 1) (FOOT)	THPL PVT MK LINE 12 (WHITE) (NOTE 1) (FOOT)	THPL PVT MK LINE 24 (WHITE/PURPLE) (NOTE 1) (FOOT)
10+36	10+62	RT			65
12+00	12+20	LT/RT			117
16+00	22+96	CL	172		
16+75	17+00	LT/RT			104
16+90	17+45	RT		13	85
<b>TOTAL</b>			<b>172</b>	<b>13</b>	<b>371</b>

**PAVEMENT MARKING NOTES:**

1. SEE HIGHWAY STANDARD 780001 FOR PAVEMENT MARKING DETAILS.

**SEEDING**

STATION	STATION	OFFSET	SEEDING CL 1A (SPECIAL) (ACRE)	NITROGEN FERT NUTR (NOTE 1) (POUND)	PHOSPHORUS FERT NUTR (NOTE 1) (POUND)	POTASSIUM FERT NUTR (NOTE 1) (POUND)	MULCH METHOD 2 (ACRE)
10+00	10+50	RT	0.010	1	1	1	0.010
11+75	12+40	RT	0.007	1	1	1	0.007
12+00	12+40	LT	0.003	0	0	0	0.003
16+40	17+65	RT	0.013	1	1	1	0.013
100+15	103+50	RT	0.024	2	2	2	0.024
<b>TOTAL</b>			<b>0.25</b>	<b>6</b>	<b>6</b>	<b>6</b>	<b>0.25</b>

**SEEDING NOTES:**

1. FERTILIZER AND MULCH QUANTITIES ARE SHOWN FOR INFORMATION ONLY.

**CURB & GUTTER**

STATION	STATION	OFFSET	COMB CURB GUTTER REM (FOOT)	COMB CC & G TB6.18 (FOOT)
10+00	10+50	RT	44	64
11+75	12+40	RT	45	50
12+00	12+40	LT	15	32
16+40	17+65	RT	89	104
<b>TOTAL</b>			<b>193</b>	<b>250</b>

**CURB & GUTTER NOTES:**

1. THE TRANSITION FROM CURB AND GUTTER SPECIAL TO BARRIER CURB SHALL BE IN THE LUMP SUM PRICE.

**SIGN**

STATION	OFFSET	TYPE	DESCRIPTION	COLORS	SIZE (IN X IN)	SIGN PANEL T1 (SQ FT)	REMOV SIN PAN ASSY TA (EACH)	WOOD SIN SUPPORT (FOOT)	METAL POST TYA (FOOT)
09+36	RT	S1-1	SCHOOL CROSSING	YELLOW - GREEN W/BLACK	36 X 36	9.0			14
09+36	RT	W16-9P	AHEAD	YELLOW - GREEN W/BLACK	24 X 12	2.0			
12+03	LT	S1-1	SCHOOL CROSSING	YELLOW - GREEN W/BLACK	36 X 36	9.0	1	14	
12+03	LT	W16-7P	DOWNWARD DIAGONAL ARROW	YELLOW - GREEN W/BLACK	21 X 15	2.25			
12+03	LT	S1-1	SCHOOL CROSSING	YELLOW - GREEN W/BLACK	36 X 36	9.0			
12+03	LT	W16-7P	DOWNWARD DIAGONAL ARROW	YELLOW - GREEN W/BLACK	21 X 15	2.25			
12+03	RT	S1-1	SCHOOL CROSSING	YELLOW - GREEN W/BLACK	36 X 36	9.0	1	14	
12+03	RT	W16-7P	DOWNWARD DIAGONAL ARROW	YELLOW - GREEN W/BLACK	21 X 15	2.25			
12+03	RT	S1-1	SCHOOL CROSSING	YELLOW - GREEN W/BLACK	36 X 36	9.0			
12+03	RT	W16-7P	DOWNWARD DIAGONAL ARROW	YELLOW - GREEN W/BLACK	21 X 15	2.25			
14+46	LT	S1-1	SCHOOL CROSSING	YELLOW - GREEN W/BLACK	36 X 36	9.0			14
14+46	LT	W16-9P	AHEAD	YELLOW - GREEN W/BLACK	24 X 12	2.0			
14+81	RT	S1-1	SCHOOL CROSSING	YELLOW - GREEN W/BLACK	36 X 36	9.0			14
14+81	RT	W16-9P	AHEAD	YELLOW - GREEN W/BLACK	24 X 12	2.0			
16+81	LT	S1-1	SCHOOL CROSSING	YELLOW - GREEN W/BLACK	36 X 36	9.0		14	
16+81	LT	W16-7P	DOWNWARD DIAGONAL ARROW	YELLOW - GREEN W/BLACK	21 X 15	2.25			
16+81	LT	S1-1	SCHOOL CROSSING	YELLOW - GREEN W/BLACK	36 X 36	9.0			
16+81	LT	W16-7P	DOWNWARD DIAGONAL ARROW	YELLOW - GREEN W/BLACK	21 X 15	2.25			
16+81	RT	S1-1	SCHOOL CROSSING	YELLOW - GREEN W/BLACK	36 X 36	9.0		14	
16+81	RT	W16-7P	DOWNWARD DIAGONAL ARROW	YELLOW - GREEN W/BLACK	21 X 15	2.25			
16+81	RT	S1-1	SCHOOL CROSSING	YELLOW - GREEN W/BLACK	36 X 36	9.0			
16+81	RT	W16-7P	DOWNWARD DIAGONAL ARROW	YELLOW - GREEN W/BLACK	21 X 15	2.25			
18+84	LT	S1-1	SCHOOL CROSSING	YELLOW - GREEN W/BLACK	36 X 36	9.0			14
18+84	LT	W16-9P	AHEAD	YELLOW - GREEN W/BLACK	24 X 12	2.0			
<b>TOTAL</b>						<b>134.00</b>	<b>2</b>	<b>56</b>	<b>56</b>

**EARTHWORK**

STATION	STATION	OFFSET	TOP SOIL F & P SPL (CU YD)
10+00	10+50	RT	6
11+75	12+40	RT	4
12+00	12+40	LT	2
16+40	17+65	RT	5
100+15	103+50	RT	13
<b>TOTAL</b>			<b>30</b>

**EARTHWORK NOTES:**

1. THIS IS AN ESTIMATED QUANTITY AND SHALL BE PLACED AS DIRECTED BY THE ENGINEER

FILE NAME = 222157.008 - COVER SHEET.DWG



USER NAME =	CAMERON RAMIREZ	DESIGNED -	BRB	REVISED -	
		DRAWN -	CJR	REVISED -	
PLOT SCALE =	1' = 1'	CHECKED -	TLC	REVISED -	
PLOT DATE =	2025-12-22	DATE -	2025-12-22	REVISED -	

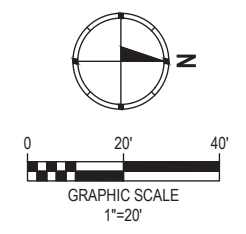
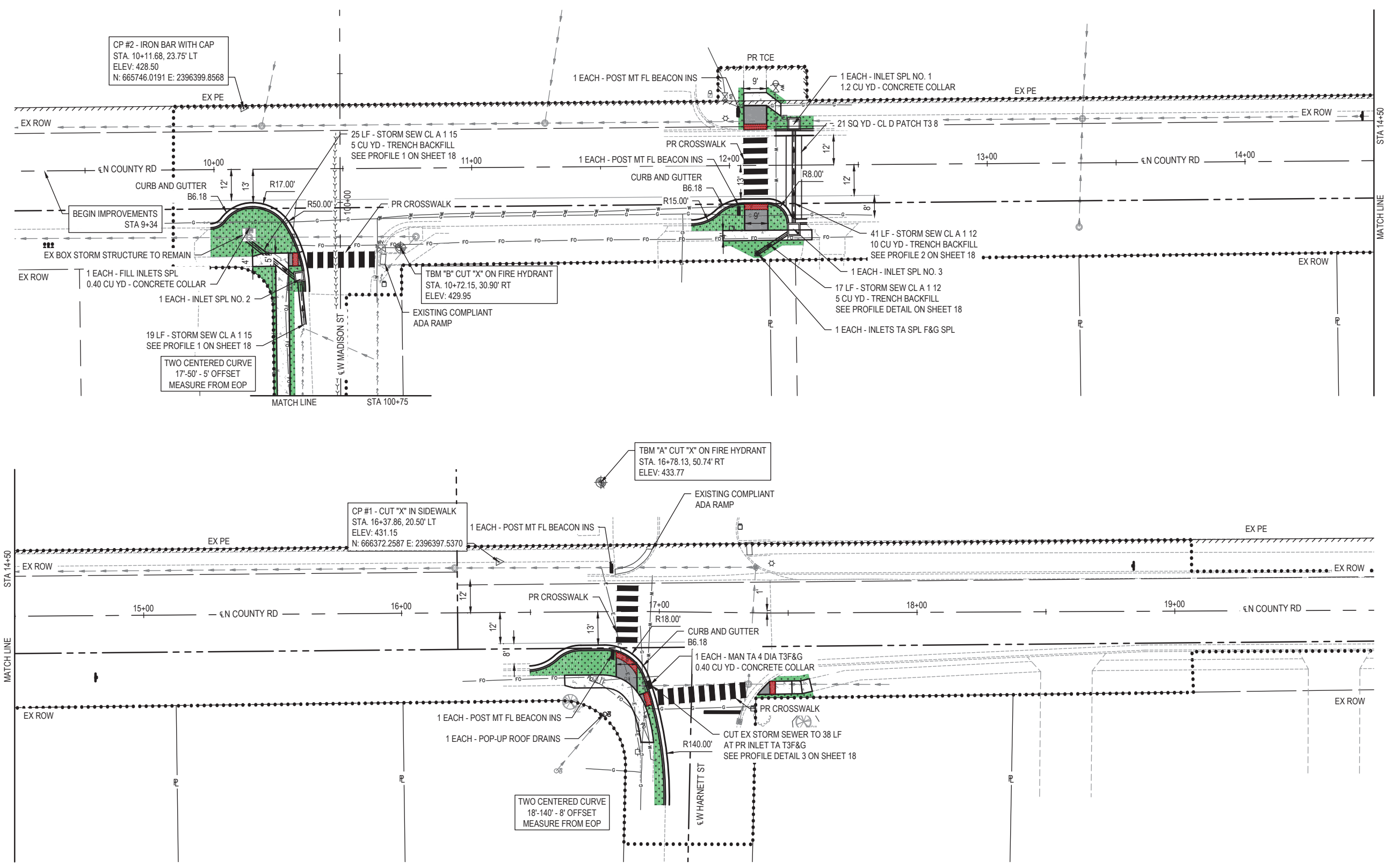
CITY OF MASCOUTAH

**SCHEDULE OF QUANTITIES**

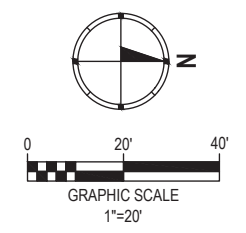
SCALE: SHEET NO. 1 OF 1 SHEETS STA. \_\_\_\_\_ TO STA. \_\_\_\_\_

F.A.U RTE.	SECTION	COUNTY	TOTAL SHEETS	SHEET NO.
9380	24-00031-00-SW	ST. CLAIR	24	6
SRTS MASCOUTAH BUMP-OUTS			CONTRACT NO. 97887	
FED. ROAD DIST. NO. _____		ILLINOIS		

FILE NAME = 222157\_008 - SRTS BUMP-OUT DESIGN.DWG



- LEGEND**
- PROPERTY LINE
  - PROPERTY LINE
  - EX ROW
  - SECTION LINE
  - PC CONC SIDEWALK 4
  - PC CONC SIDEWALK 6
  - DETECTABLE WARNING
  - SEEDING CL 1
  - TOPSOIL F & P SPL
  - ..... LIMITS OF CONSTRUCTION



- LEGEND**
- PROPERTY LINE
  - PROPERTY LINE
  - EX ROW
  - SECTION LINE
  - PC CONC SIDEWALK 4
  - PC CONC SIDEWALK 6
  - DETECTABLE WARNING
  - SEEDING CL 1
  - TOPSOIL F & P SPL
  - ..... LIMITS OF CONSTRUCTION

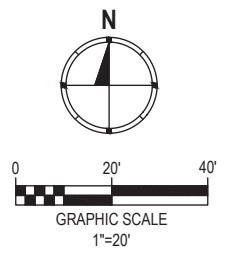
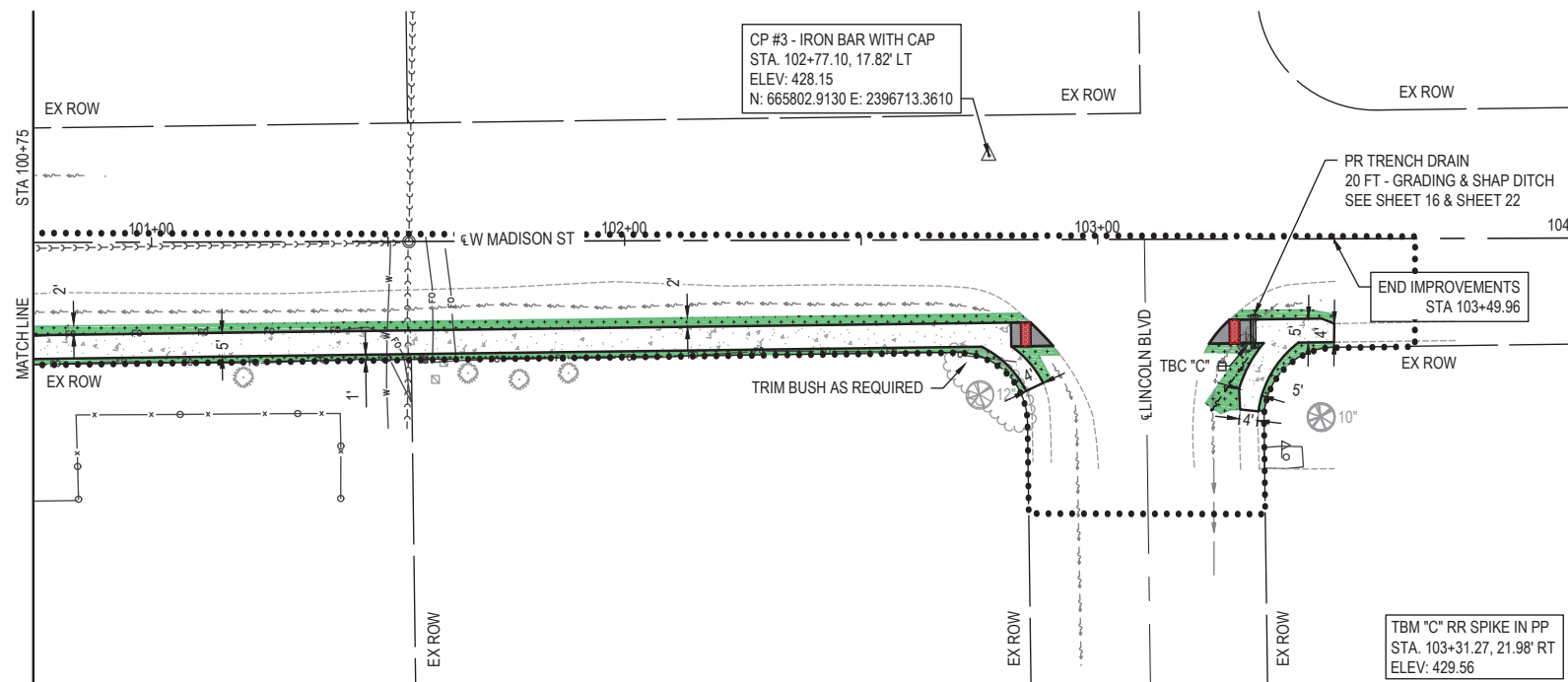


USER NAME =	CAMERON RAMIREZ	DESIGNED -	BRB	REVISED -	
PLOT SCALE =	1" = 1'	DRAWN -	CJR	REVISED -	
PLOT DATE =	2025-12-17	CHECKED -	TLC	REVISED -	
		DATE -	2025-12-17	REVISED -	

CITY OF MASCOUTAH

<b>PLAN SHEETS</b>		
SCALE: 1" = 20'	SHEET NO. 1 OF 2 SHEETS	STA. 9+22.60 TO STA. 19+77.20

F.A.U. RTE.	SECTION	COUNTY	TOTAL SHEETS	SHEET NO.
9380	24-00031-00-SW	ST. CLAIR	24	7
SRTS MASCOUTAH BUMP-OUTS			CONTRACT NO. 97887	
FED. ROAD DIST. NO. -			ILLINOIS	



- LEGEND**
- PROPERTY LINE
  - - - PROPERTY LINE
  - - - EX ROW
  - - - SECTION LINE
  - ▭ PC CONC SIDEWALK 4
  - ▭ PC CONC SIDEWALK 6
  - ▭ DETECTABLE WARNING
  - ▭ SEEDING CL 1
  - ▭ TOPSOIL F & P SPL
  - LIMITS OF CONSTRUCTION

FILE NAME = 222157\_008 - SRTS BUMP/OUT DESIGN.DWG

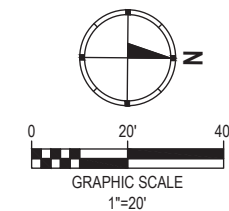
**OATES ASSOCIATES**  
 ILLINOIS DESIGN FIRM LICENSE NO.: 184.001115

USER NAME =	CAMERON RAMIREZ	DESIGNED -	BRB	REVISED -	
		DRAWN -	CJR	REVISED -	
PLOT SCALE =	1' = 1'	CHECKED -	TLC	REVISED -	
PLOT DATE =	2025-12-17	DATE -	2025-12-17	REVISED -	

**CITY OF MASCOUTAH**

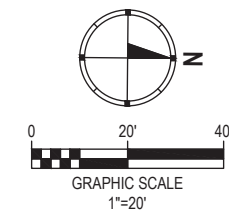
<b>PLAN SHEETS</b>		
SCALE: 1" = 20'	SHEET NO. 2 OF 2 SHEETS	STA. 99+50 TO STA. 104+00

F.A.U. RTE.	SECTION	COUNTY	TOTAL SHEETS	SHEET NO.
9380	24-00031-00-SW	ST. CLAIR	24	8
SRTS MASCOUTAH BUMP-OUTS			CONTRACT NO. 97887	
FED. ROAD DIST. NO. ILLINOIS				



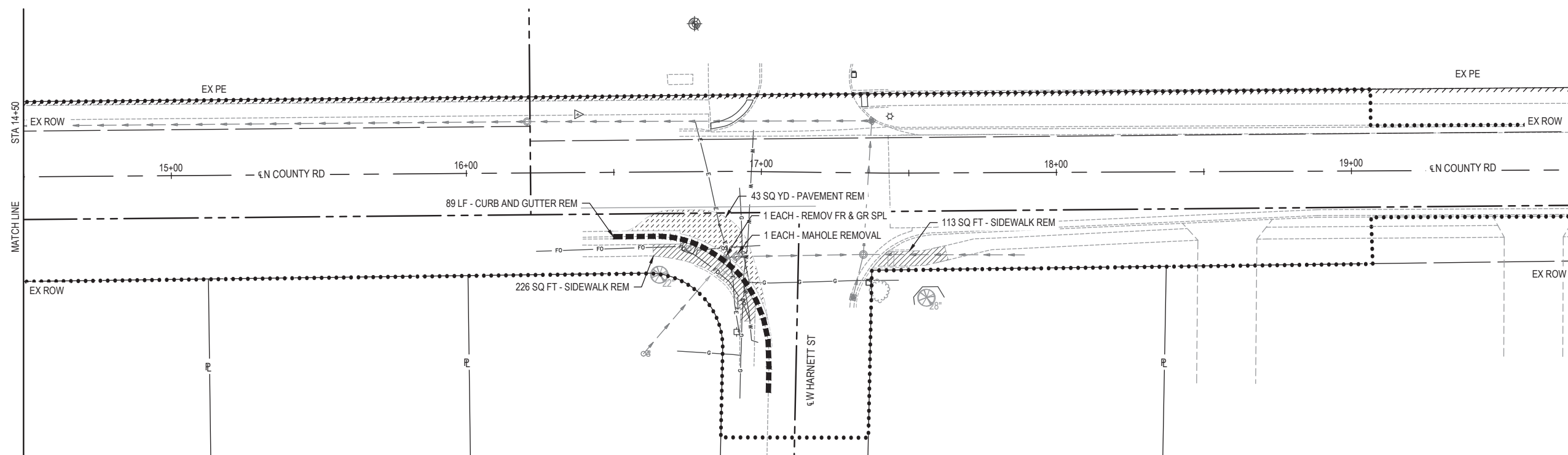
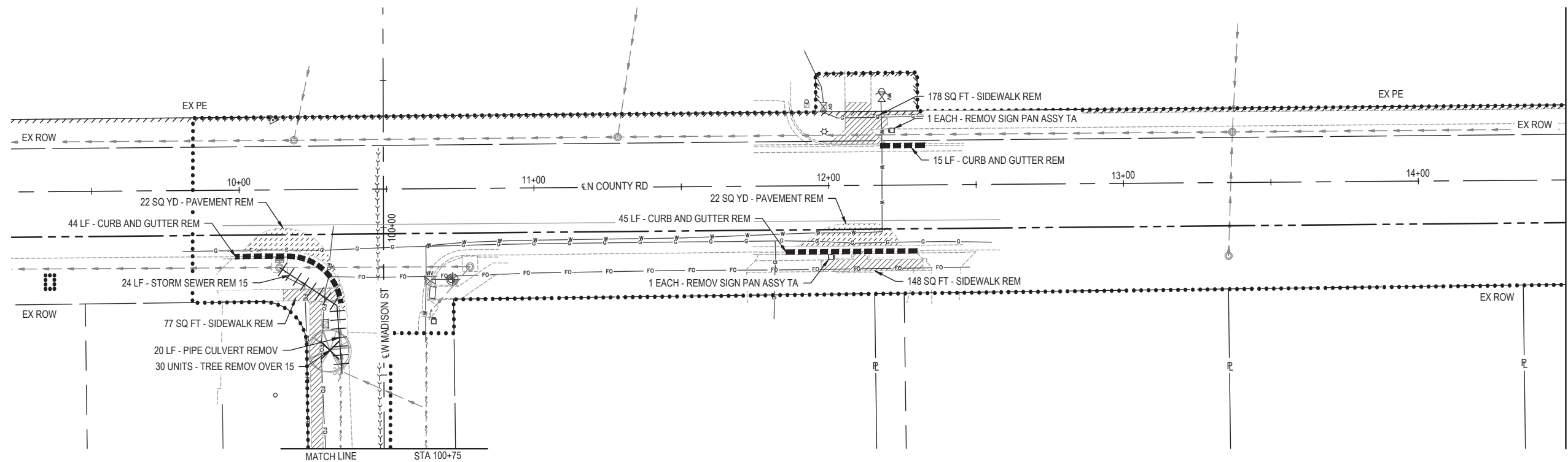
**REMOVAL LEGEND**

- COMB CURB GUTTER REM
- PIPE CULVERT REM  
STORM SEWER REM 15
- TREE REMOV OVER 15
- PAVEMENT REM
- SIDEWALK REM



**REMOVAL LEGEND**

- COMB CURB GUTTER REM
- PIPE CULVERT REM  
STORM SEWER REM 15
- TREE REMOV OVER 15
- PAVEMENT REM
- SIDEWALK REM



FILE NAME = 222157\_008 - SRTS BUMP-OUT DESIGN.DWG



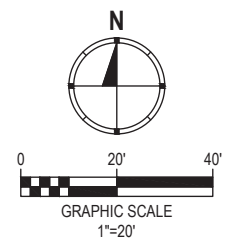
USER NAME =	CAMERON RAMIREZ	DESIGNED -	BRB	REVISED -	
		DRAWN -	CJR	REVISED -	
PLOT SCALE =	1" = 1'	CHECKED -	TLC	REVISED -	
PLOT DATE =	2025-12-17	DATE -	2025-12-17	REVISED -	

CITY OF MASCOUTAH

**REMOVAL PLAN SHEETS**

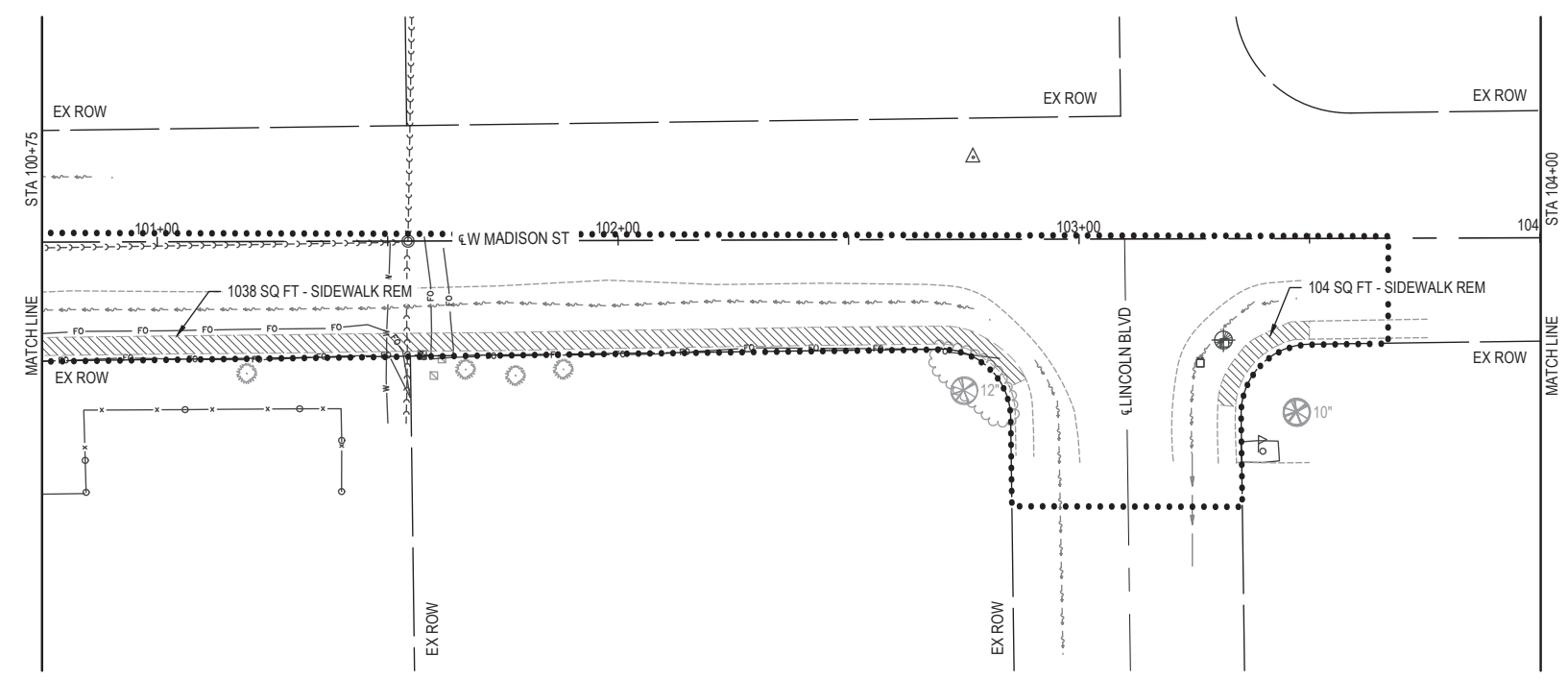
SCALE: 1" = 20' SHEET NO. 1 OF 2 SHEETS STA. \_\_\_\_\_ TO STA. \_\_\_\_\_

F.A.U. RTE.	SECTION	COUNTY	TOTAL SHEETS	SHEET NO.
9380	24-00031-00-SW	ST. CLAIR	24	9
SRTS MASCOUTAH BUMP-OUTS			CONTRACT NO. 97887	
FED. ROAD DIST. NO. _____			ILLINOIS	



**REMOVAL LEGEND**

- COMB CURB GUTTER REM
- PIPE CULVERT REM  
 STORM SEWER REM 15
- TREE REMOV OVER 15
- PAVEMENT REM
- SIDEWALK REM



FILE NAME = 222157.008 - SRTS BUMP-OUT DESIGN.DWG



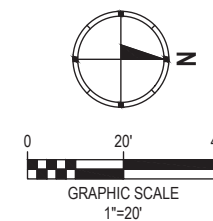
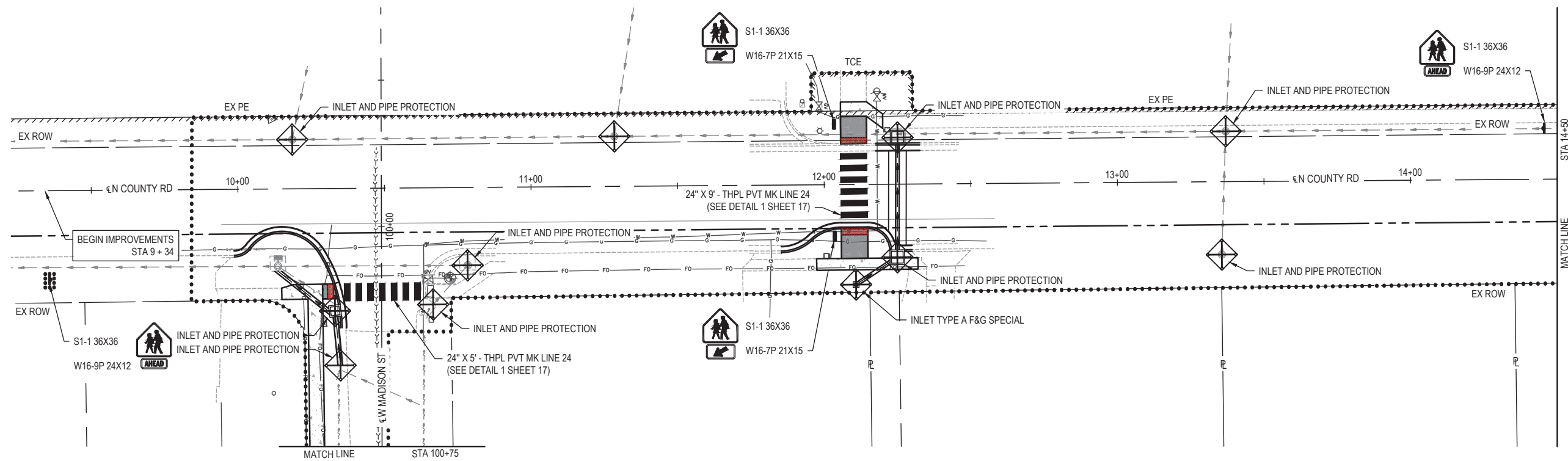
USER NAME =	CAMERON RAMIREZ	DESIGNED -	BRB	REVISED -	
		DRAWN -	CJR	REVISED -	
PLOT SCALE =	1' = 1'	CHECKED -	TLC	REVISED -	
PLOT DATE =	2025-12-17	DATE -	2025-12-17	REVISED -	



CITY OF MASCOUTAH

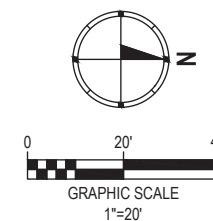
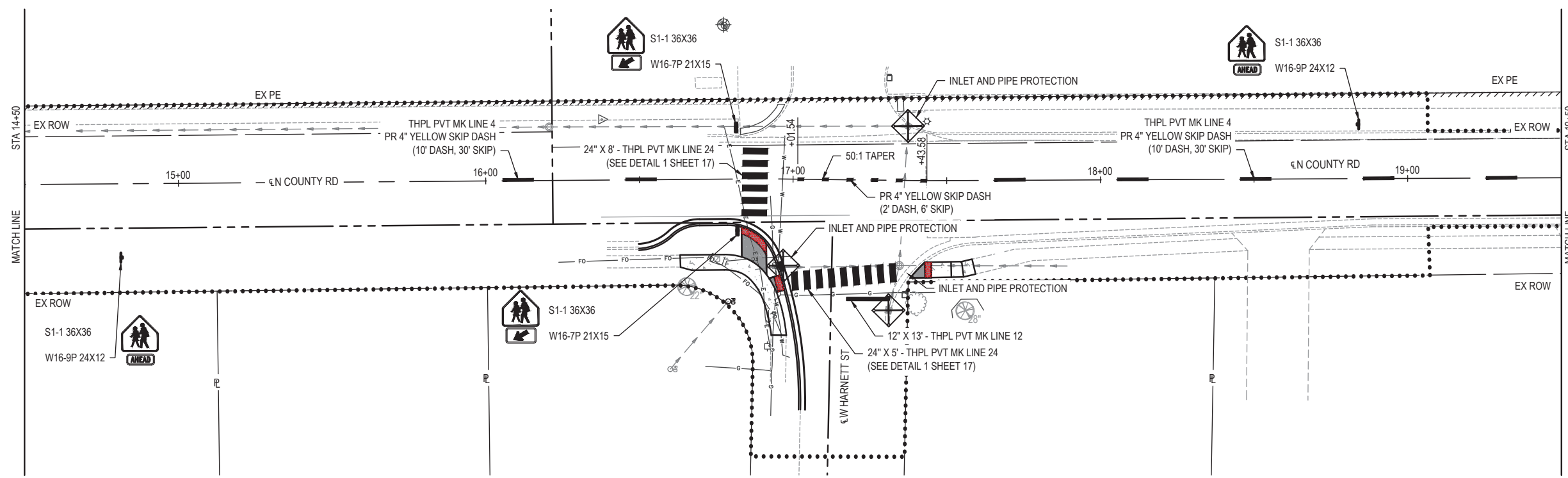
**REMOVAL PLAN SHEETS**



SCALE: 1" = 20'    SHEET NO. 2 OF 2 SHEETS    STA. \_\_\_\_\_ TO STA. \_\_\_\_\_

F.A.U. RTE.	SECTION	COUNTY	TOTAL SHEETS	SHEET NO.
9380	24-00031-00-SW	ST. CLAIR	24	10
SRTS MASCOUTAH BUMP-OUTS			CONTRACT NO. 97887	
FED. ROAD DIST. NO. -		ILLINOIS		



- LEGEND**
-  INLET AND PIPE PROTECTION
  -  LIMITS OF CONSTRUCTION



- LEGEND**
-  INLET AND PIPE PROTECTION
  -  LIMITS OF CONSTRUCTION

FILE NAME = 222157\_008 - SRTS BUMPOUT DESIGN.DWG



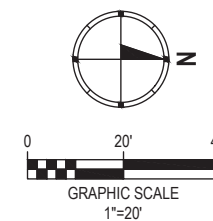
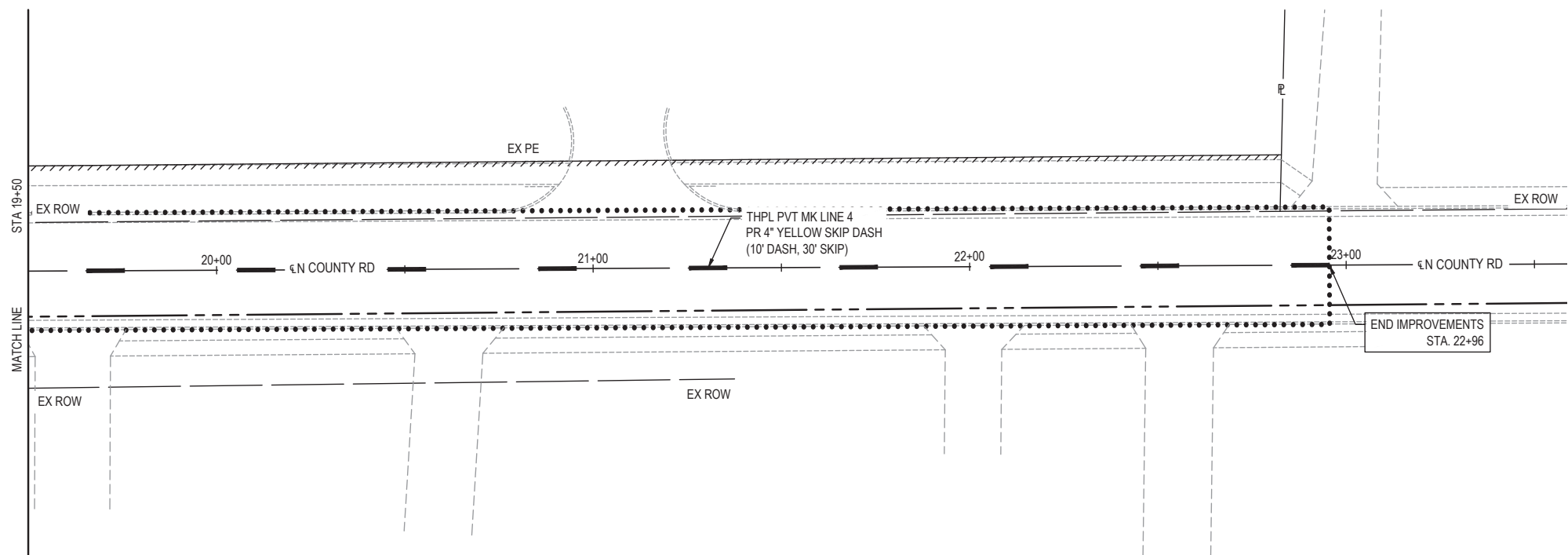
USER NAME =	CAMERON RAMIREZ	DESIGNED -	BRB	REVISED -	
PLOT SCALE =	1" = 1'	DRAWN -	CJR	REVISED -	
PLOT DATE =	2025-12-17	CHECKED -	TLC	REVISED -	
		DATE -	2025-12-17	REVISED -	



CITY OF MASCOUHAH

**EROSION CONTROL, PAVEMENT MARKING, AND SIGNAGE SHEETS**

SCALE: 1" = 20'    SHEET NO. 1 OF 3 SHEETS    STA. \_\_\_\_\_ TO STA. \_\_\_\_\_

F.A.U. RTE.	SECTION	COUNTY	TOTAL SHEETS	SHEET NO.
9380	24-00031-00-SW	ST. CLAIR	24	11
SRTS MASCOUHAH BUMPOUTS			CONTRACT NO. 97887	
FED. ROAD DIST. NO. _____			ILLINOIS	



- LEGEND**
-  INLET AND PIPE PROTECTION
  -  LIMITS OF CONSTRUCTION

FILE NAME = 222157.008 - SRTS BUMP-OUT DESIGN.DWG

**OATES ASSOCIATES**  
 ILLINOIS DESIGN FIRM LICENSE NO.: 184.001115

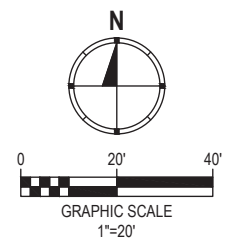
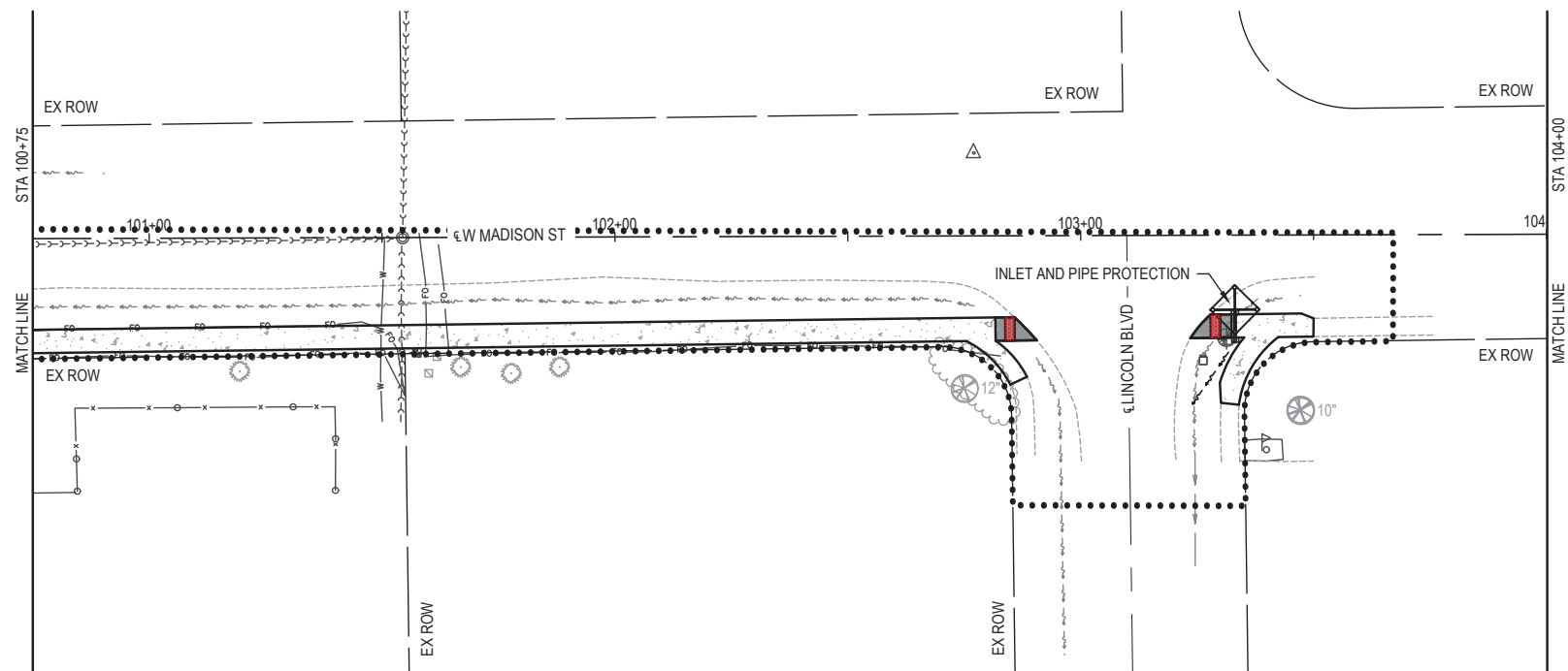
USER NAME = CAMERON RAMIREZ	DESIGNED - BRB	REVISED -
PLOT SCALE = 1" = 1'	DRAWN - CJR	REVISED -
PLOT DATE = 2025-12-17	CHECKED - TLC	REVISED -
	DATE - 2025-12-17	REVISED -



CITY OF MASCOUHAH

**EROSION CONTROL, PAVEMENT MARKING, AND SIGNAGE SHEETS**

SCALE: 1" = 20' SHEET NO. 2 OF 3 SHEETS STA. \_\_\_\_\_ TO STA. \_\_\_\_\_

F.A.U. RTE.	SECTION	COUNTY	TOTAL SHEETS	SHEET NO.
9380	24-00031-00-SW	ST. CLAIR	24	12
SRTS MASCOUHAH BUMP-OUTS			CONTRACT NO. 97887	
FED. ROAD DIST. NO. _____		ILLINOIS		



- LEGEND**
-  INLET AND PIPE PROTECTION
  -  LIMITS OF CONSTRUCTION

FILE NAME = 222157\_008 - SRTS BUMP-OUT DESIGN.DWG



USER NAME =	CAMERON RAMIREZ	DESIGNED -	BRB	REVISED -	
PLOT SCALE =	1' = 1'	DRAWN -	CJR	REVISED -	
PLOT DATE =	2025-12-17	CHECKED -	TLC	REVISED -	
		DATE -	2025-12-17	REVISED -	

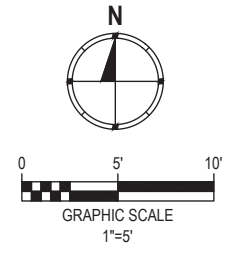
CITY OF MASCOUTAH

**EROSION CONTROL, PAVEMENT MARKING, AND SIGNAGE SHEETS**

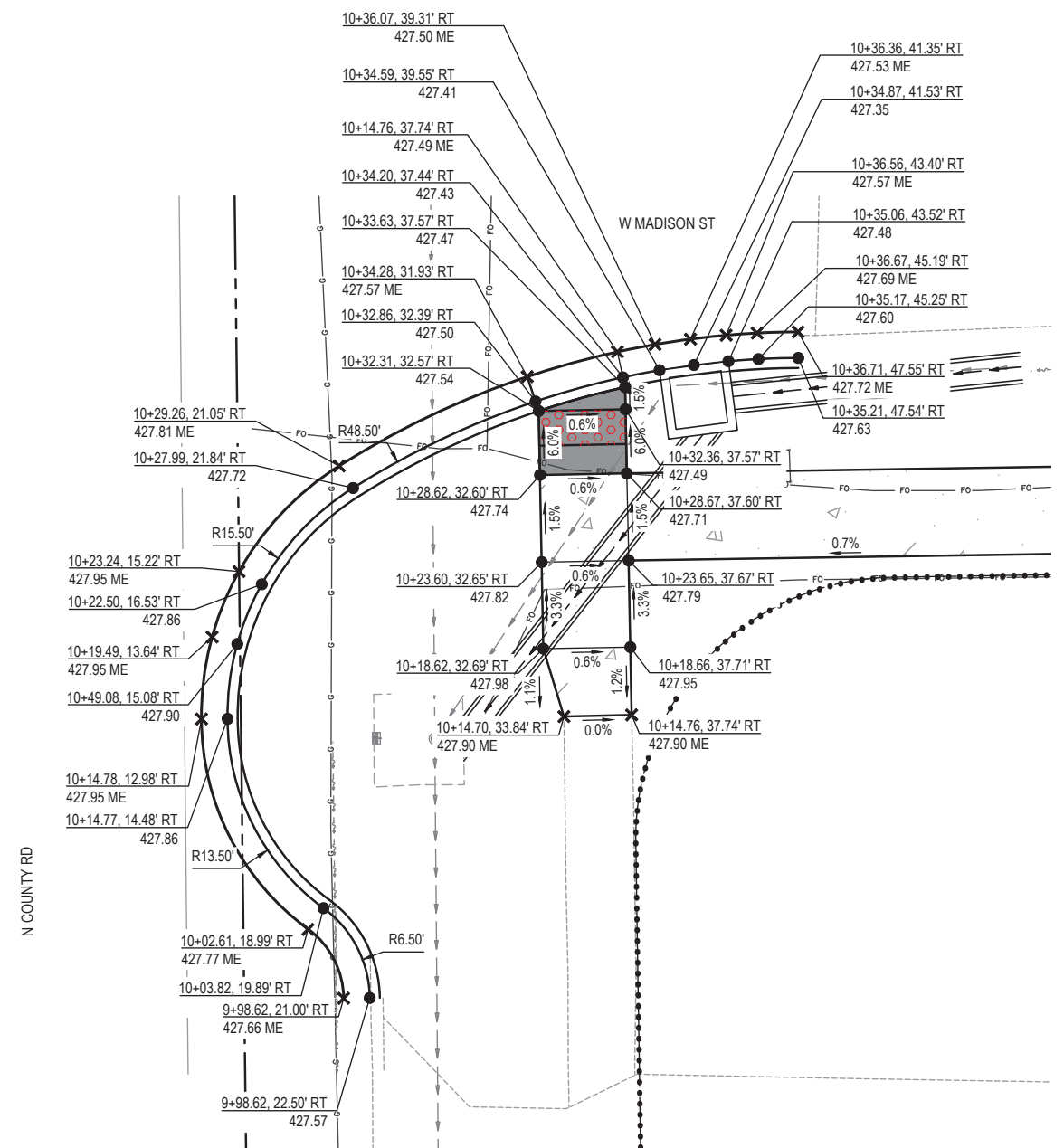
SCALE: 1" = 20'    SHEET NO. 3 OF 3 SHEETS    STA. \_\_\_\_\_ TO STA. \_\_\_\_\_

F.A.U. RTE.	SECTION	COUNTY	TOTAL SHEETS	SHEET NO.
9380	24-00031-00-SW	ST. CLAIR	24	13
SRTS MASCOUTAH BUMP-OUTS			CONTRACT NO. 97887	
FED. ROAD DIST. NO. -		ILLINOIS		

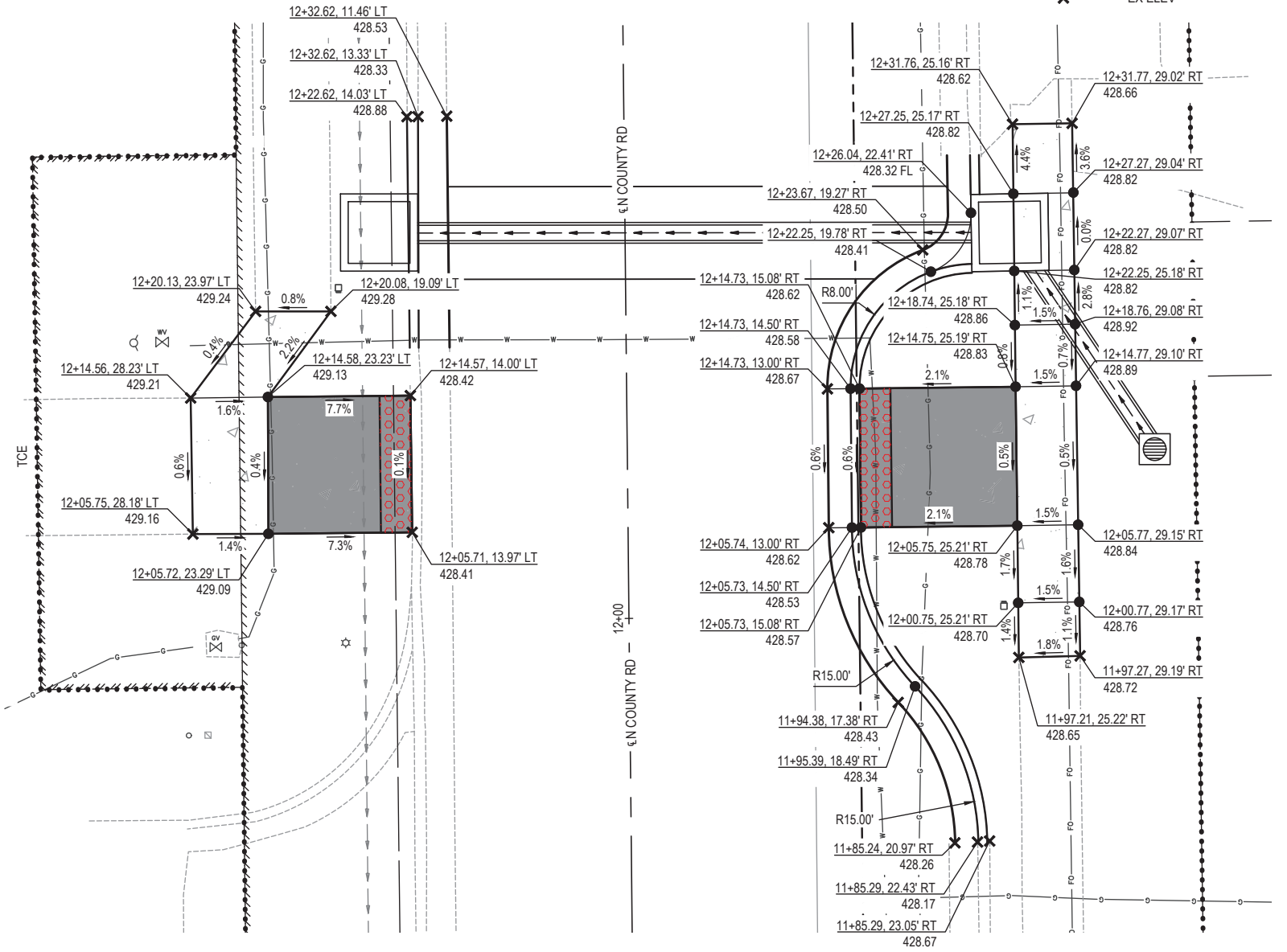
DETAIL LEGEND



- PC CONC SIDEWALK 4
- PC CONC SIDEWALK 6
- DETECTABLE WARNING
- PR ELEV
- EX ELEV



INTERSECTION DETAIL @ SE QUADRANT OF N COUNTY RD AND W MADISON ST



MID-BLOCK CROSSING DETAIL @ N COUNTY RD NEAR STA 12+05

FILE NAME = 222157.008 - SRTS BUMP-OUT DESIGN.DWG



USER NAME = CAMERON RAMIREZ	DESIGNED - BRB	REVISED -
PLOT SCALE = 1" = 1'	DRAWN - CJR	REVISED -
PLOT DATE = 2025-12-17	CHECKED - TLC	REVISED -
	DATE - 2025-12-17	REVISED -

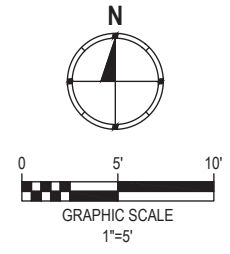
CITY OF MASCOUTAH

GRADING DETAILS

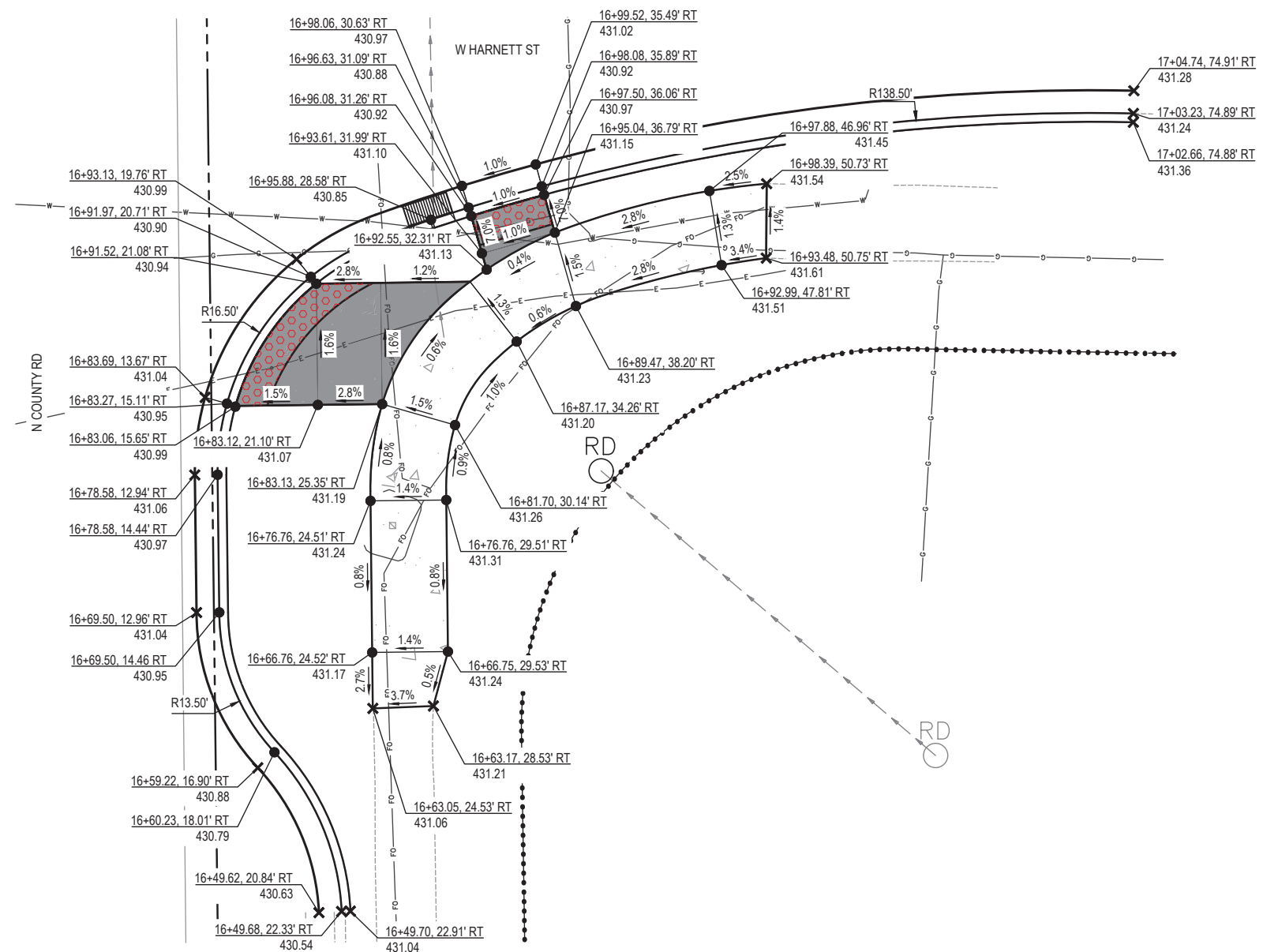
SCALE: 1" = 5' SHEET NO. 1 OF 3 SHEETS STA. \_\_\_\_\_ TO STA. \_\_\_\_\_

F.A.U. RTE.	SECTION	COUNTY	TOTAL SHEETS	SHEET NO.
9380	24-00031-00-SW	ST. CLAIR	24	14
SRTS MASCOUTAH BUMP-OUTS			CONTRACT NO. 97887	
FED. ROAD DIST. NO. _____		ILLINOIS		

**DETAIL LEGEND**



- PC CONC SIDEWALK 4
- PC CONC SIDEWALK 6
- DETECTABLE WARNING
- PR ELEV
- EX ELEV



**INTERSECTION DETAIL @ SE QUADRANT OF N COUNTY RD AND W HARNETT ST**



**INTERSECTION DETAIL @ NE QUADRANT OF N COUNTY RD AND W HARNETT ST**

FILE NAME = 222157.008 - SRTS BUMP-OUT DESIGN.DWG



USER NAME =	CAMERON RAMIREZ	DESIGNED -	BRB
		DRAWN -	CJR
PLOT SCALE =	1" = 1'	CHECKED -	TLC
PLOT DATE =	2025-12-17	DATE -	2025-12-17
		REVISED -	

CITY OF MASCOUTAH

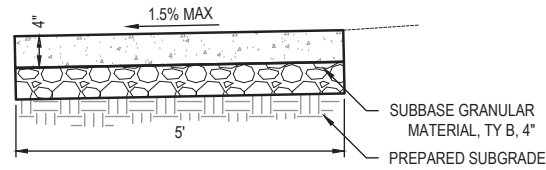
GRADING DETAILS		
SCALE: 1" = 5'	SHEET NO. 2 OF 3 SHEETS	STA. _____ TO STA. _____

F.A.U. RTE.	SECTION	COUNTY	TOTAL SHEETS	SHEET NO.
9380	24-00031-00-SW	ST. CLAIR	24	15
SRTS MASCOUTAH BUMP-OUTS			CONTRACT NO. 97887	
FED. ROAD DIST. NO. _____			ILLINOIS	



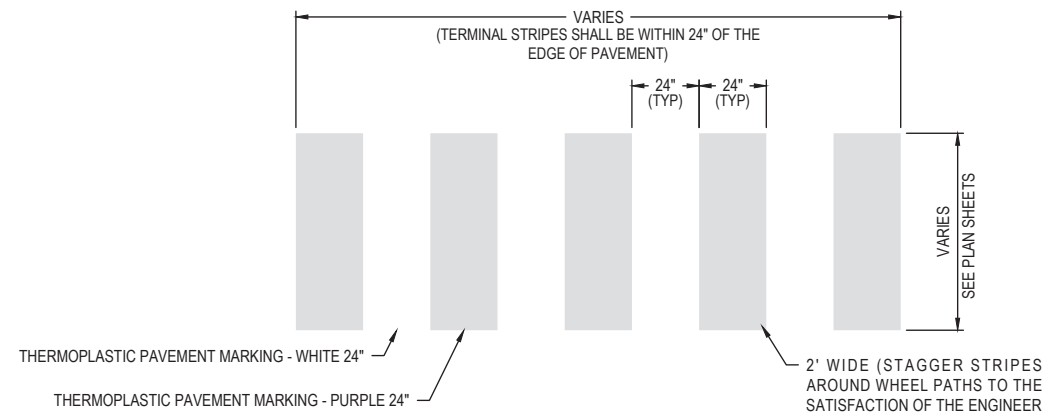
NOTES:

1. CONTRACTION JOINTS ARE TO BE ON ±5' CENTERS
2. EXPANSION JOINTS ARE TO BE ON ±100' CENTERS AND AT POINTS OF CURVATURE.
3. EXPANSION JOINT REQUIRED BETWEEN THE SIDEWALK AND EXISTING PAVEMENT OR STRUCTURES.
4. ALL EXPANSION JOINTS SHALL BE SEALED WITH GUN GRADE SEALANT.

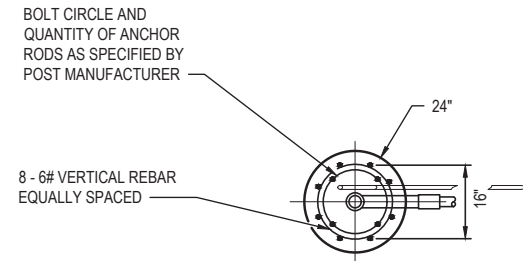


**PC CONCRETE SIDEWALK DETAIL**

(NOT TO SCALE)



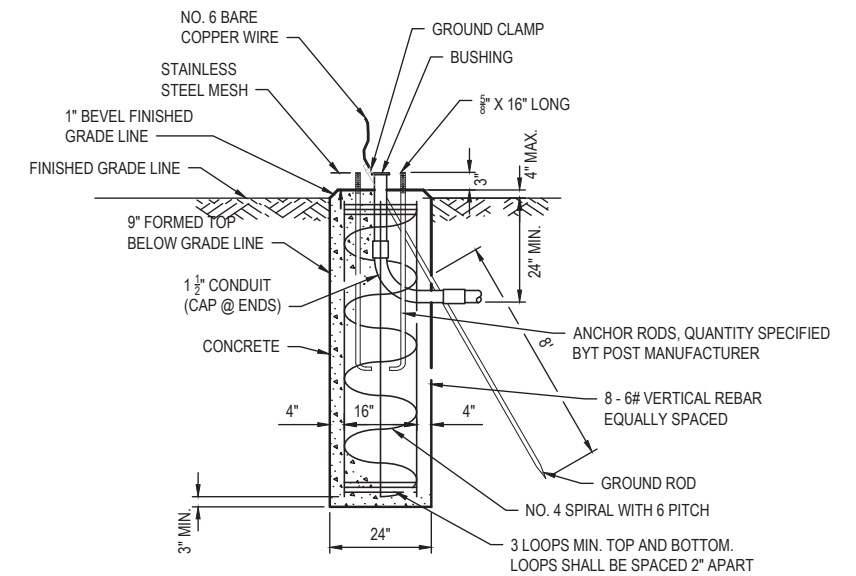
**CROSSWALK DETAIL**  
SCALE: NO SCALE



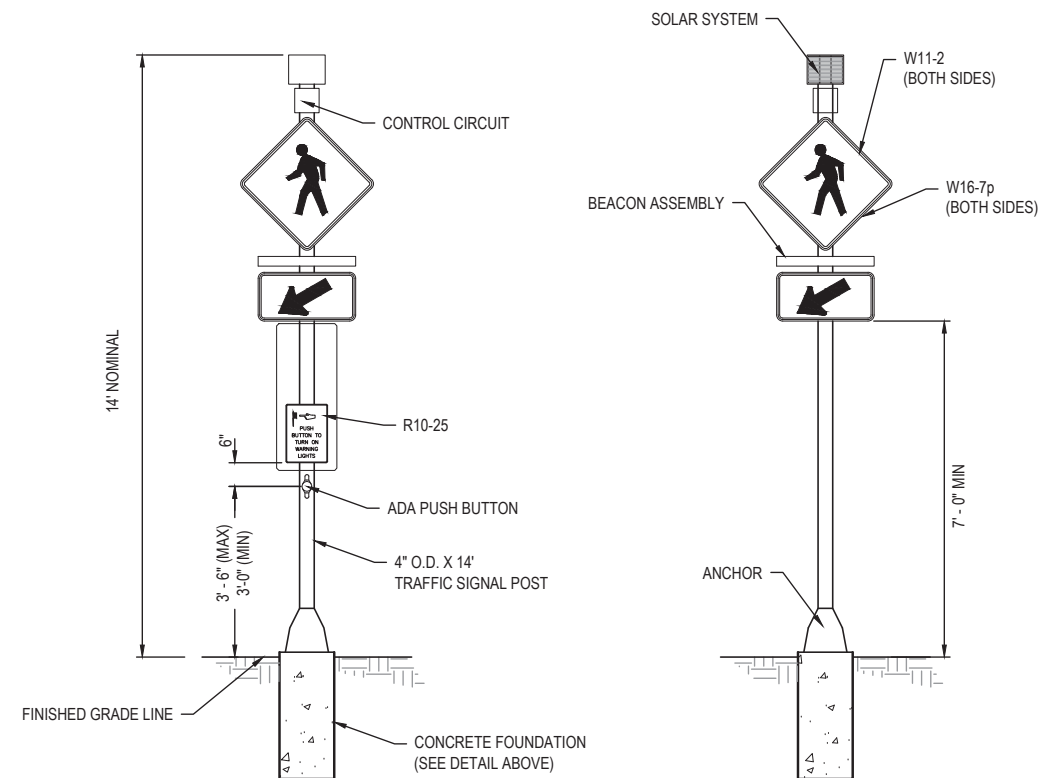
**TOP VIEW**  
(NOT TO SCALE)

NOTES:

1. SEE SPECIAL PROVISION FOR RECTANGULAR RAPID FLASHING BEACON INSTALLATION. CONCRETE FOUNDATIONS, CONTROL CIRCUITS, ETC SHALL BE INCLUDED IN THE COST OF THE ENTIRE ASSEMBLY.
2. POST AND FOUNDATION SHALL BE ACCORDING TO ARTICLE 1077.01 OF THE STANDARD SPECIFICATIONS FOR ROAD AND BRIDGE CONSTRUCTION.
3. FOUNDATIONS SHALL BE PLACED ADJACENT TO THE EDGE OF SIDEWALK AT THE STATIONS INDICATED ON THE PLANS.



**CONCRETE FOUNDATION**  
(NOT TO SCALE)



**FRONT VIEW**  
(NOT TO SCALE)

**BACK VIEW**  
(NOT TO SCALE)

**POST MOUNTED FLASH BEACON INSTALLATION**  
SCALE: NO SCALE

FILE NAME = 222157\_008 - SRTS BUMP/OUT DESIGN.DWG



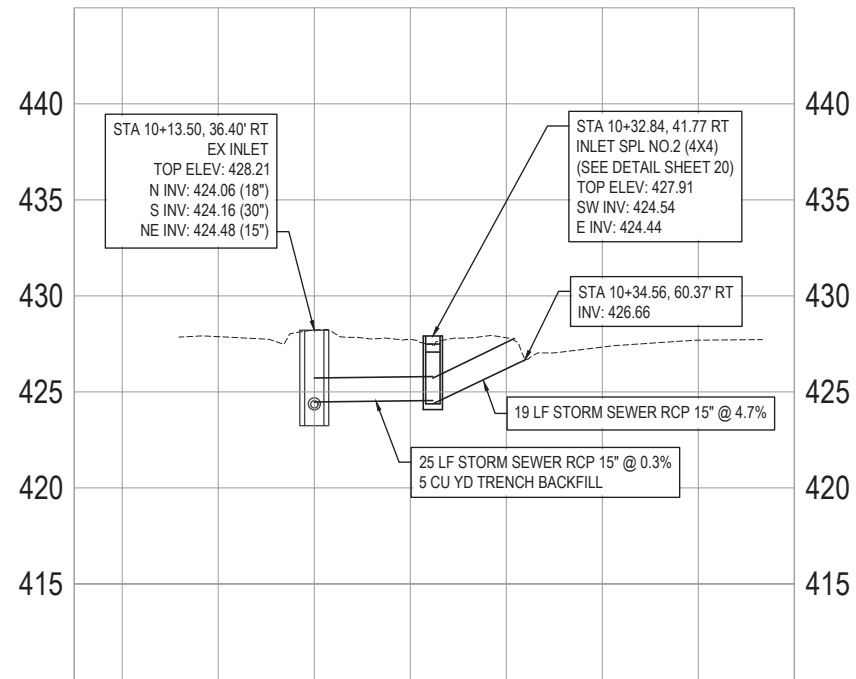
USER NAME =	CAMERON RAMIREZ	DESIGNED -	BRB	REVISED -	
PLOT SCALE =	1' = 1'	DRAWN -	CJR	REVISED -	
PLOT DATE =	2025-12-17	CHECKED -	TLC	REVISED -	
		DATE -	2025-12-17	REVISED -	

CITY OF MASCOUTAH

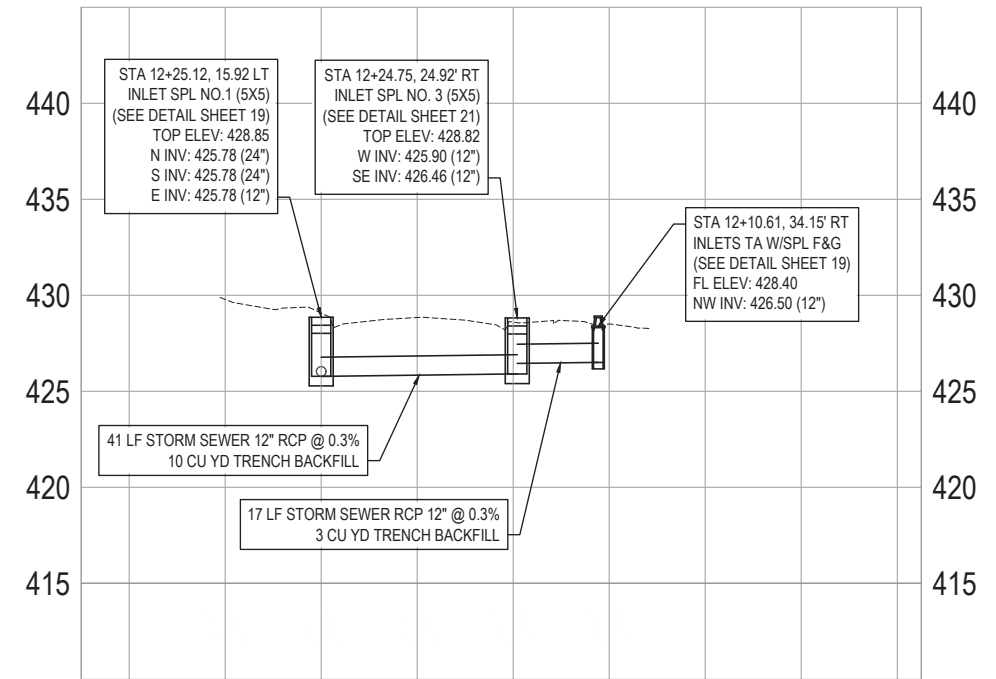
**CONSTRUCTION DETAILS**

SCALE: SHEET NO. \_\_\_ OF \_\_\_ SHEETS STA. \_\_\_\_\_ TO STA. \_\_\_\_\_

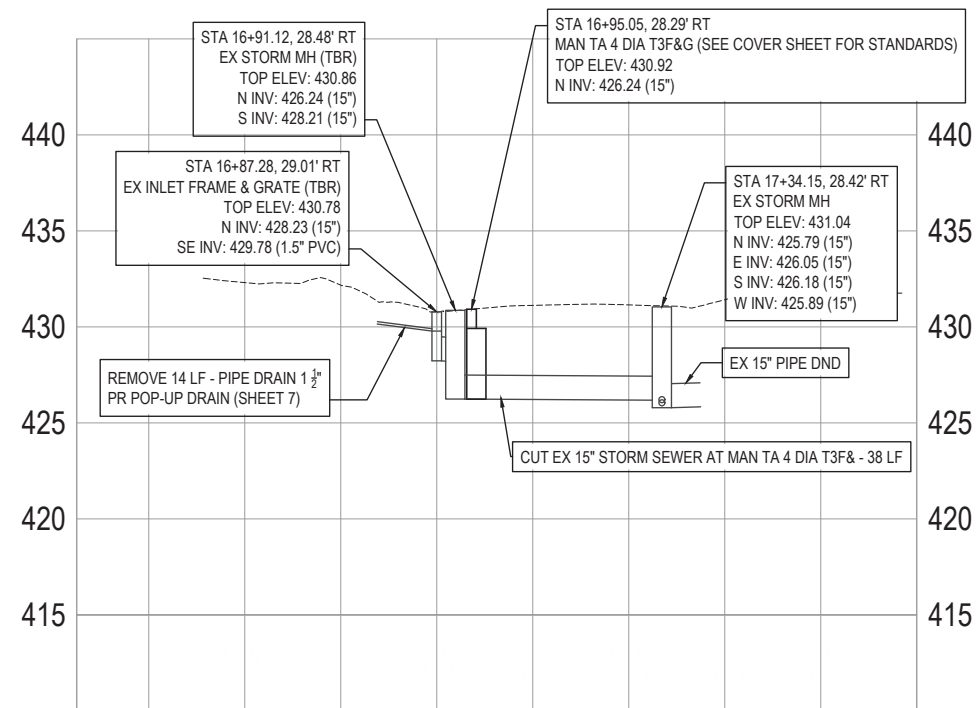
F.A.U. RTE.	SECTION	COUNTY	TOTAL SHEETS	SHEET NO.
9380	24-00031-00-SW	ST. CLAIR	24	17
SRTS MASCOUTAH BUMP-OUTS			CONTRACT NO. 97887	
FED. ROAD DIST. NO. _____			ILLINOIS	



**INLETS, SPECIAL NO.2 PROFILE - (PROFILE 1)**  
(NOT TO SCALE)



**INLETS, SPECIAL NO.1 PROFILE - (PROFILE 2)**  
(NOT TO SCALE)



**INLETS, TYPE A, TYPE 3 FRAME AND GRATE PROFILE - (PROFILE 3)**  
(NOT TO SCALE)

FILE NAME = 222157.008 - SRTS BUMP/OUT DESIGN.DWG



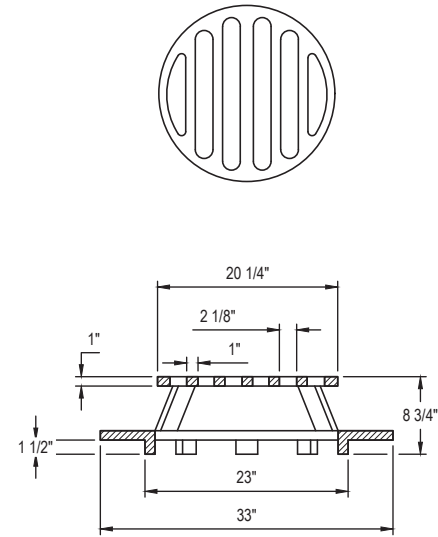
USER NAME =	CAMERON RAMIREZ	DESIGNED -	BRB	REVISED -	
PLOT SCALE =	1' = 1'	DRAWN -	CJR	REVISED -	
PLOT DATE =	2025-12-17	CHECKED -	TLC	REVISED -	
		DATE -	2025-12-17	REVISED -	

CITY OF MASCOUTAH

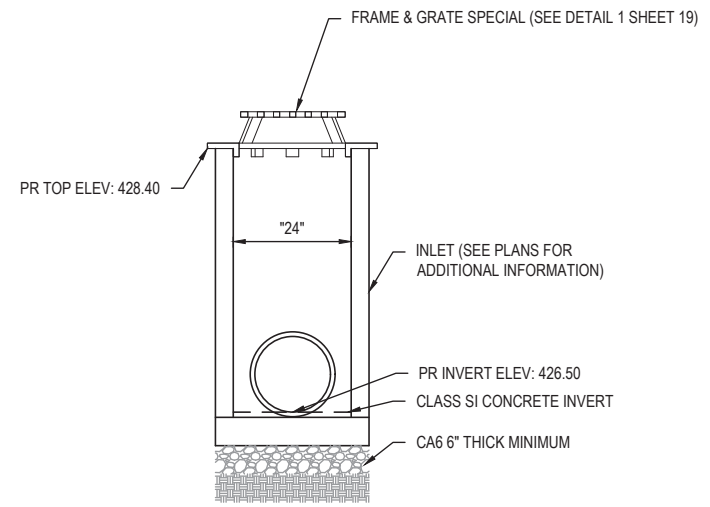
**DRAINAGE DETAILS**

SCALE: SHEET NO. 1 OF 5 SHEETS STA. \_\_\_\_\_ TO STA. \_\_\_\_\_

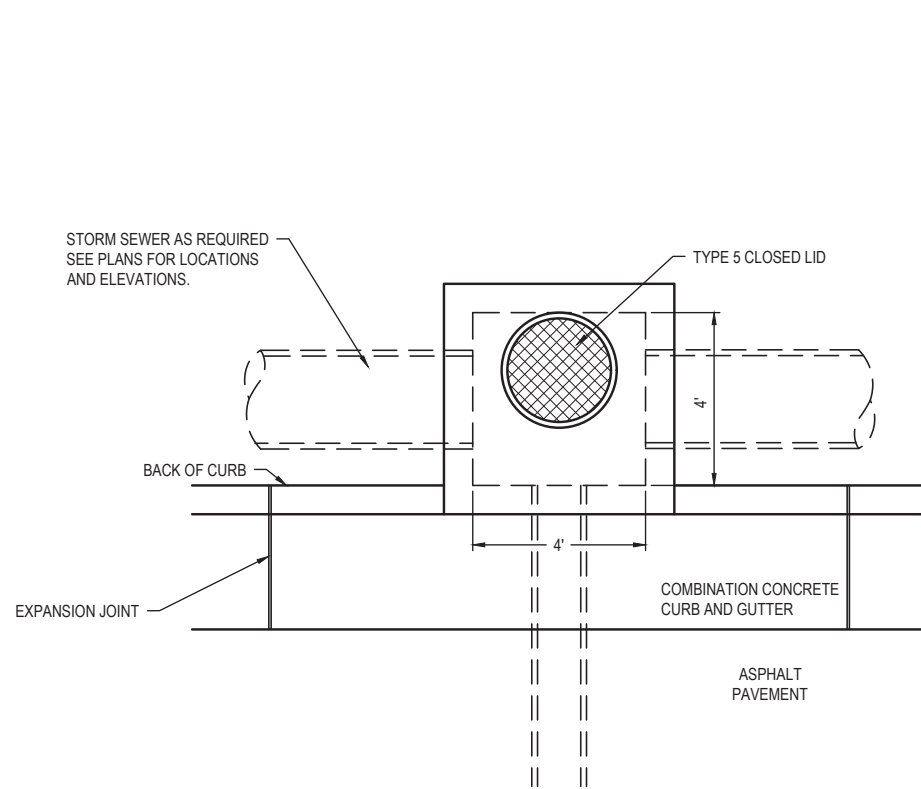
F.A.U. RTE.	SECTION	COUNTY	TOTAL SHEETS	SHEET NO.
9380	24-00031-00-SW	ST. CLAIR	24	18
SRTS MASCOUTAH BUMP-OUTS			CONTRACT NO. 97887	
FED. ROAD DIST. NO. _____		ILLINOIS		



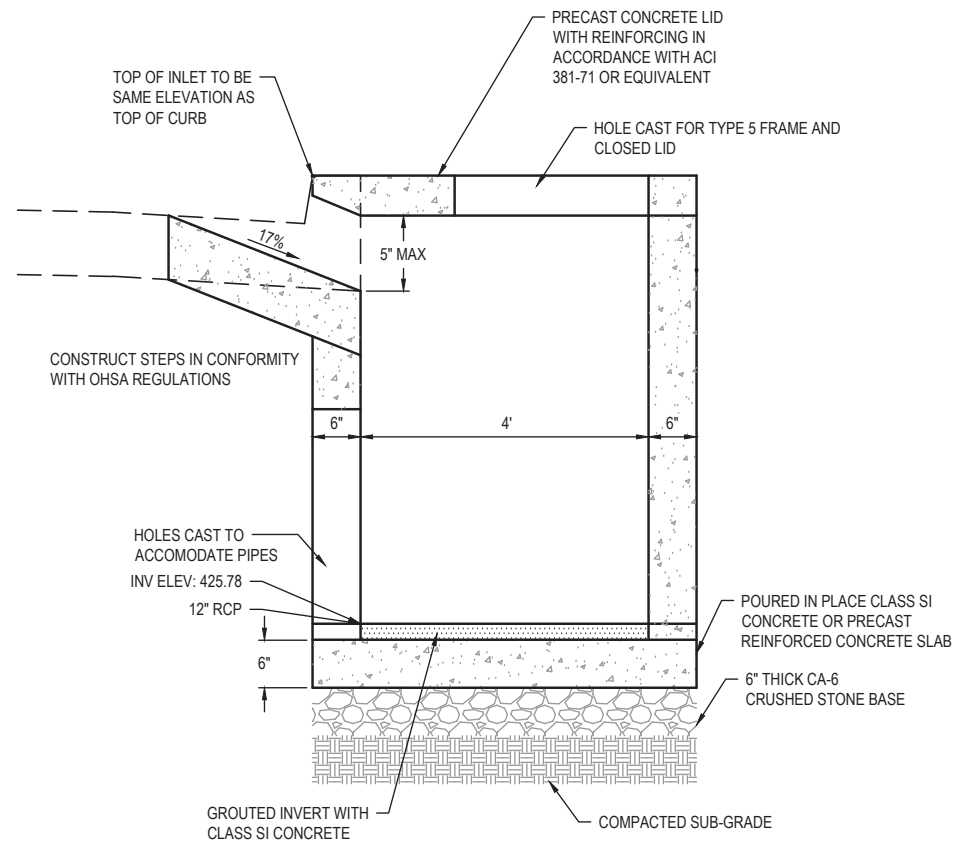
1  
19 **FRAME & GRATE SPECIAL**  
SCALE: NO SCALE



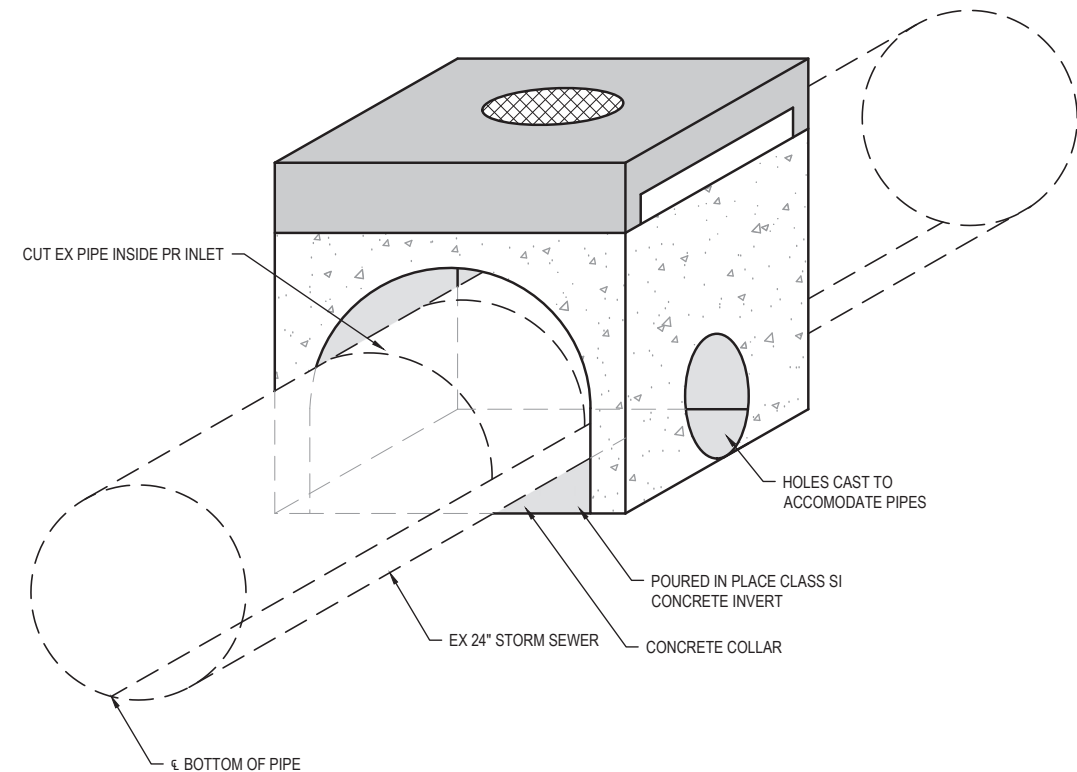
2  
19 **INLET TA WITH SPECIAL FRAME & GRATE (@ STA 12+10.61, 34.15 RT)**  
SCALE: NO SCALE



**PLAN VIEW**



**SIDE VIEW**



**ISOMETRIC VIEW**

3  
19 **INLETS, SPECIAL NO.1**  
SCALE: NO SCALE

FILE NAME = 222157\_008 - SRTS BUMP-OUT DESIGN.DWG



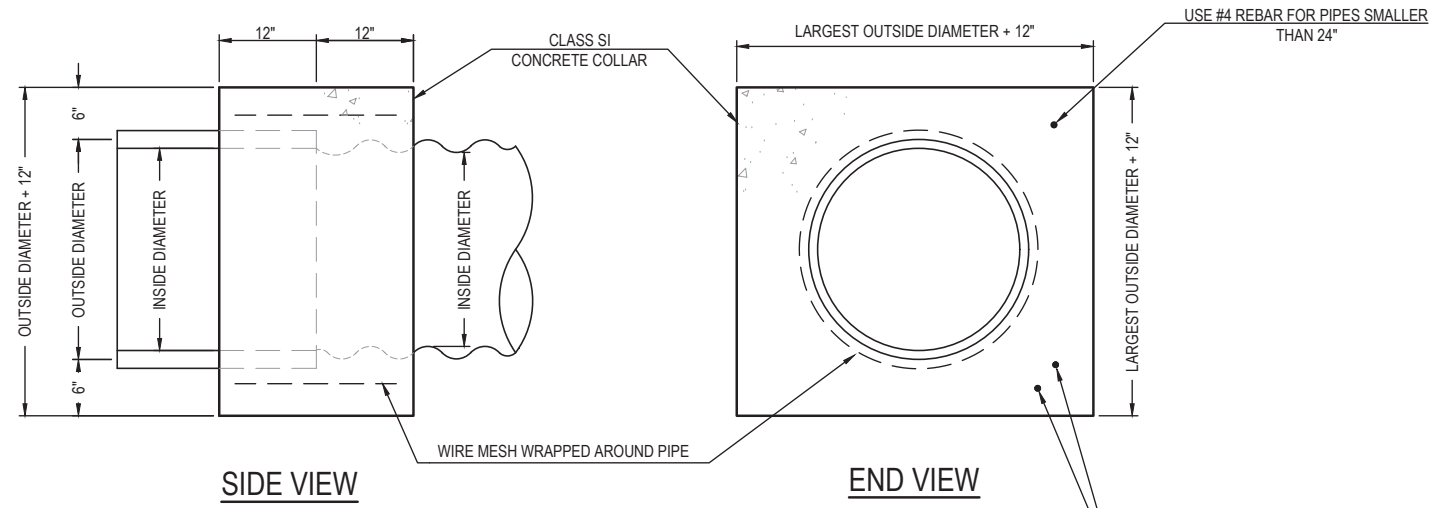
USER NAME =	CAMERON RAMIREZ	DESIGNED -	BRB	REVISED -	
PLOT SCALE =	1' = 1'	DRAWN -	CJR	REVISED -	
PLOT DATE =	2025-12-17	CHECKED -	TLC	REVISED -	
		DATE -	2025-12-17	REVISED -	

CITY OF MASCOUTAH

**DRAINAGE DETAILS**

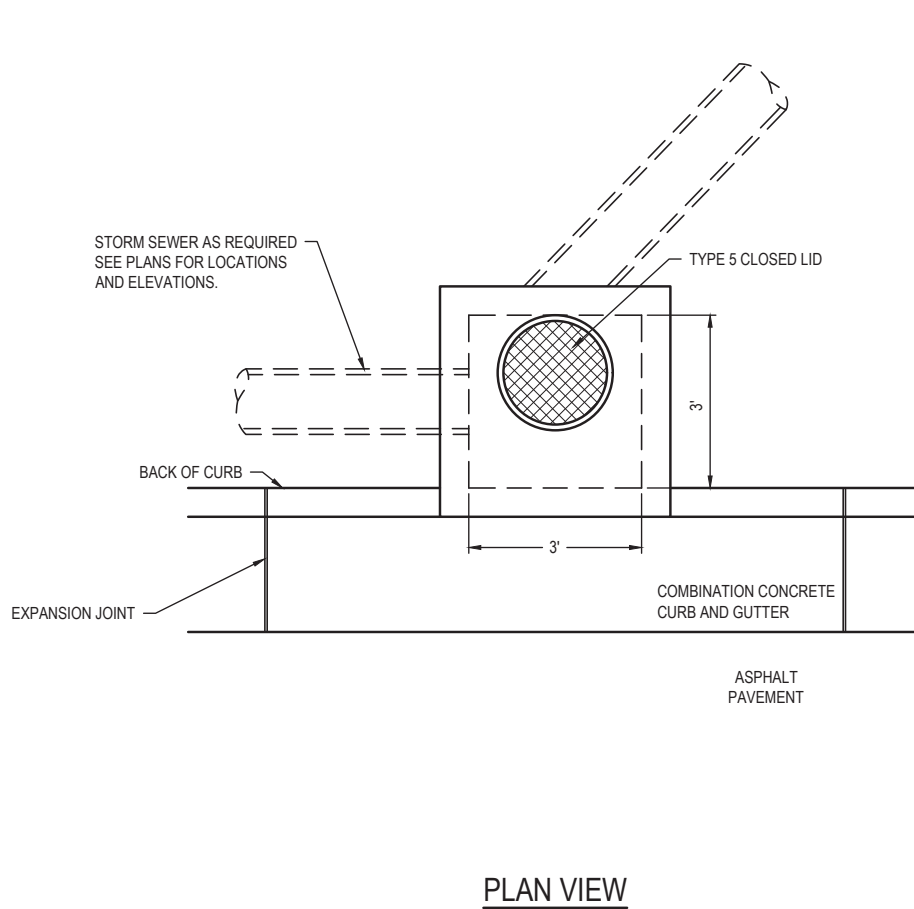
SCALE: SHEET NO. 2 OF 5 SHEETS STA. \_\_\_\_\_ TO STA. \_\_\_\_\_

F.A.U. RTE.	SECTION	COUNTY	TOTAL SHEETS	SHEET NO.
9380	24-00031-00-SW	ST. CLAIR	24	19
SRTS MASCOUTAH BUMP-OUTS			CONTRACT NO. 97887	
FED. ROAD DIST. NO. -		ILLINOIS		

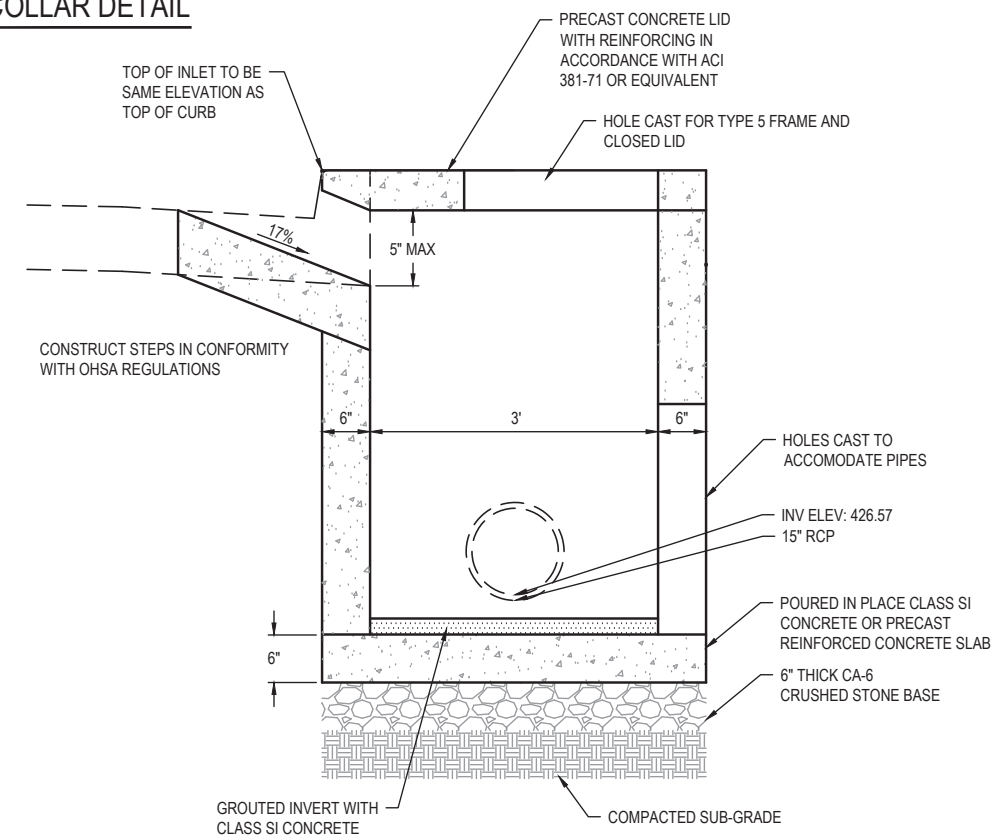


INSIDE DIAMETER OF PIPE	ESTIMATED CLASS SI CONCRETE REQUIRED
INCH	CU. YD.
12"	0.30
15"	0.40
18"	0.45
24"	0.60
30"	0.80
36"	0.95
42"	1.25
48"	1.45
54"	1.70
60"	1.95
72"	2.50
84"	3.10
96"	3.80
108"	4.55

- GENERAL NOTES**
1. CLASS SI CONCRETE SHALL BE USED THROUGHOUT.
  2. WHEN CONCRETE COLLARS ARE USED TO CONNECT PIPES OF DIFFERENT OUTSIDE DIAMETERS, THE CONCRETE COLLAR SHALL BE FORMED USING THE LARGEST OUTSIDE DIAMETER (SEE END VIEW).
  3. THE WIRE MESH SHALL WEIGH NOT LESS THAN 54#/100 SQ. FT. (2.63 kg/m).
  4. WHEN CONCRETE COLLARS ARE CONSTRUCTED ADJACENT TO AN EXISTING CONCRETE STRUCTURE (HEADWALLS, ETC.) REBAR, SHALL BE USED AND WILL NOT BE PAID FOR SEPARATELY BUT INCLUDED IN THE PRICE OF THE CONCRETE COLLAR.



**1 CONCRETE COLLAR DETAIL**  
SCALE: NO SCALE



**2 INLETS, SPECIAL NO. 2**  
SCALE: NO SCALE

**SIDE VIEW**

FILE NAME = 222157.008 - SRTS BUMP/OUT DESIGN.DWG



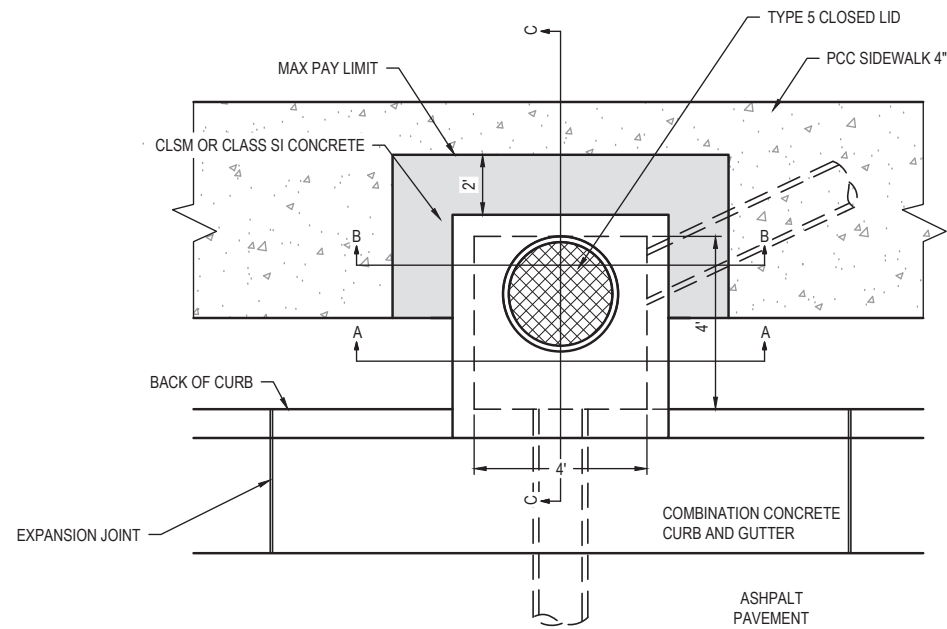
USER NAME = CAMERON RAMIREZ	DESIGNED - BRB	REVISIONS
PLOT SCALE = 1' = 1'	DRAWN - CJR	REVISIONS
PLOT DATE = 2025-12-17	CHECKED - TLC	REVISIONS
	DATE - 2025-12-17	REVISIONS

CITY OF MASCOUTAH

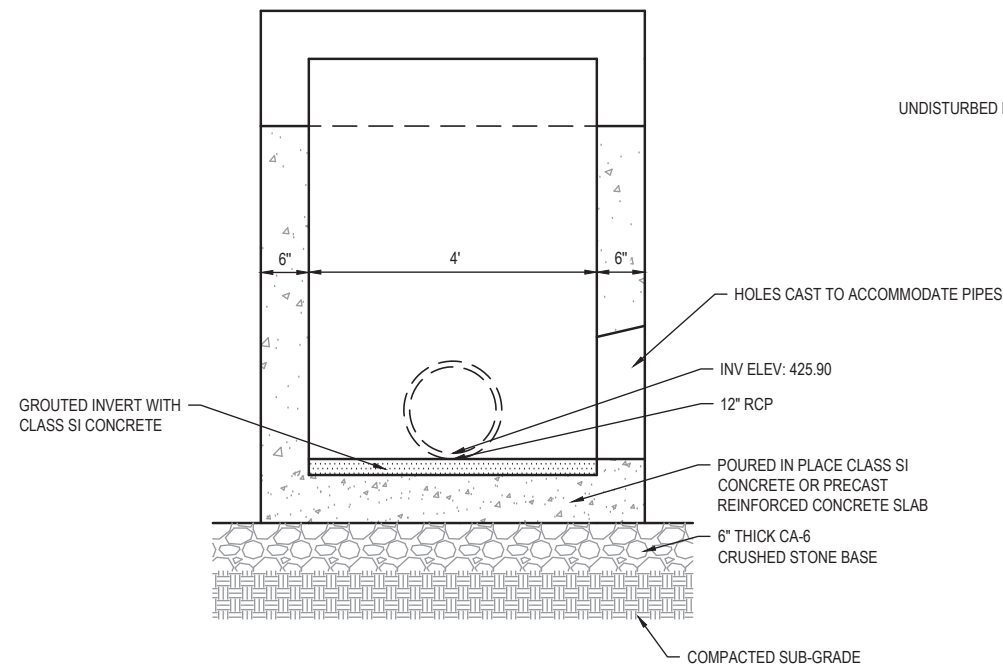
**DRAINAGE DETAILS**

SCALE:	SHEET NO. 3 OF 5 SHEETS	STA. _____ TO STA. _____
--------	-------------------------	--------------------------

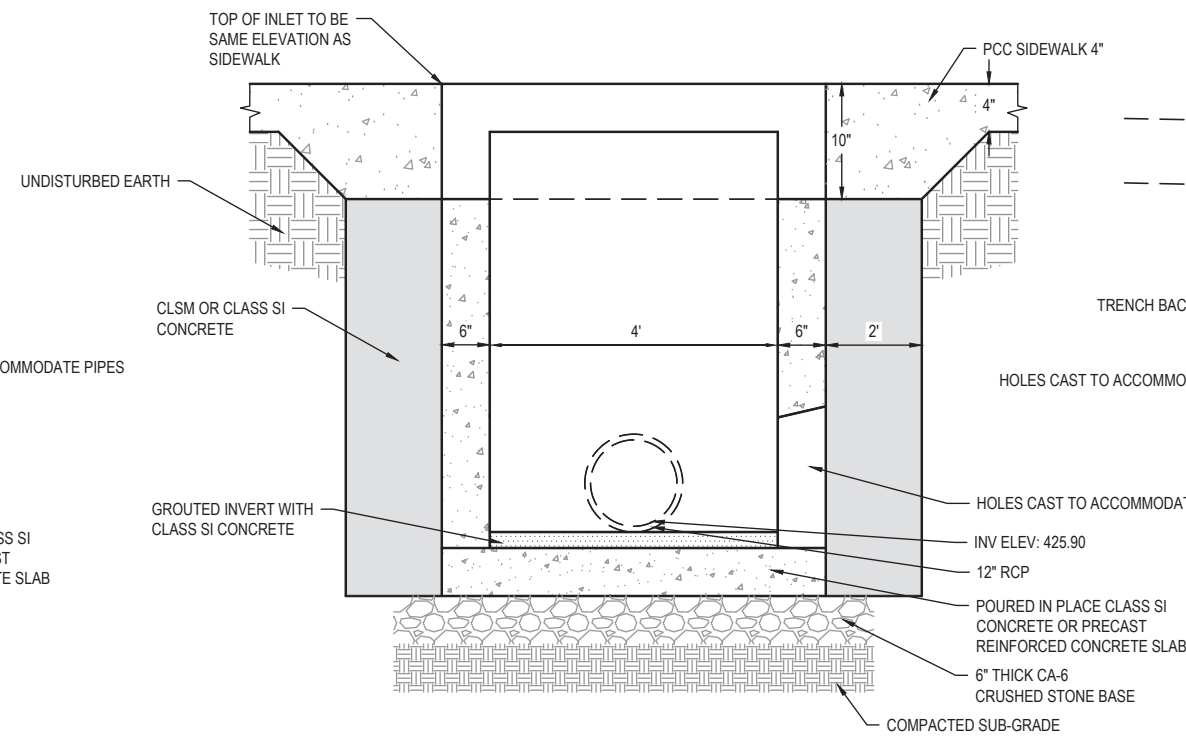
F.A.U. RTE. 9380	SECTION 24-00031-00-SW	COUNTY ST. CLAIR	TOTAL SHEETS 24	SHEET NO. 20
SRTS MASCOUTAH BUMP-OUTS			CONTRACT NO. 97887	
FED. ROAD DIST. NO. _____		ILLINOIS		



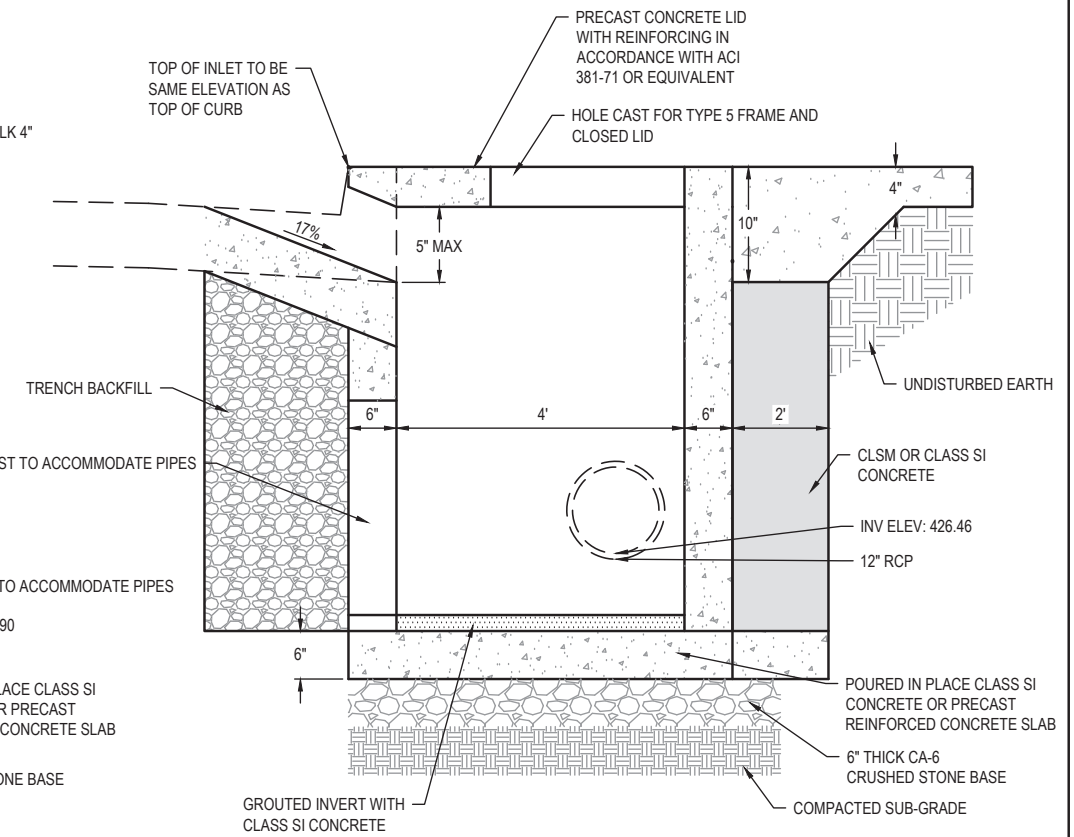
PLAN VIEW



SECTION A - A



SECTION B - B



SECTION C - C

1 INLETS, SPECIAL NO. 3 (STA 12+25, RT)  
21 SCALE: NO SCALE

FILE NAME = 222157.008 - SRTS BUMP-OUT DESIGN.DWG



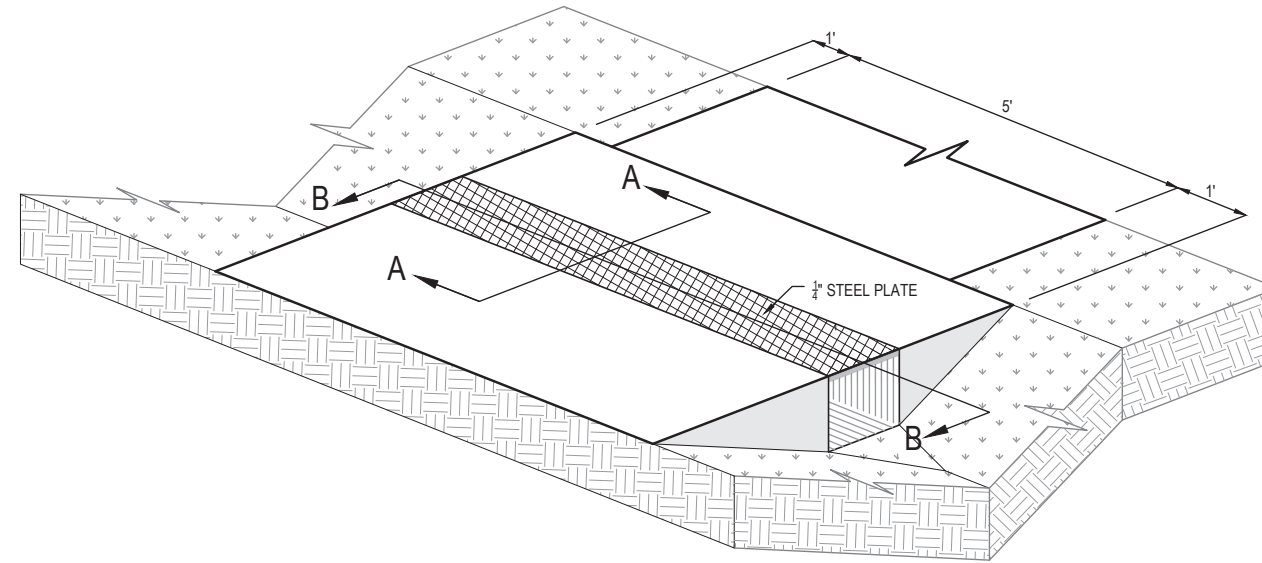
USER NAME =	CAMERON RAMIREZ	DESIGNED -	BRB	REVISED -	
PLOT SCALE =	1' = 1'	DRAWN -	CJR	REVISED -	
PLOT DATE =	2025-12-17	CHECKED -	TLC	REVISED -	
		DATE -	2025-12-17	REVISED -	

CITY OF MASCOUTAH

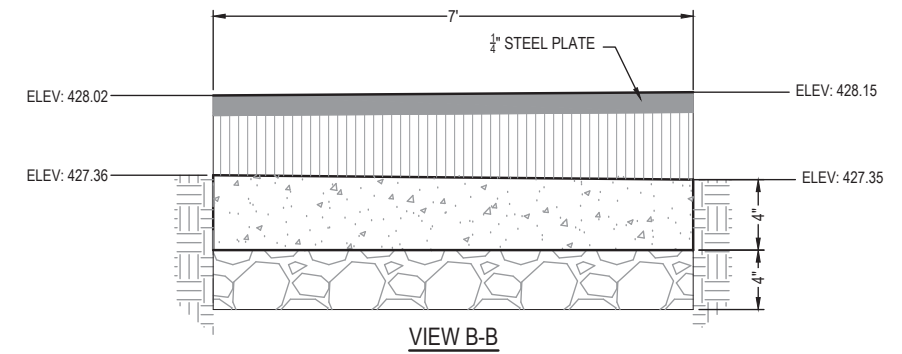
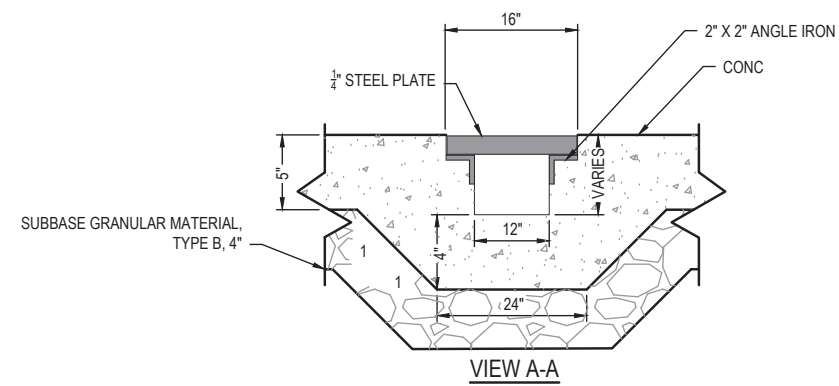
DRAINAGE DETAILS

SCALE: SHEET NO. 4 OF 5 SHEETS STA. TO STA.

F.A.U. RTE.	SECTION	COUNTY	TOTAL SHEETS	SHEET NO.
9380	24-00031-00-SW	ST. CLAIR	24	21
SRTS MASCOUTAH BUMP-OUTS			CONTRACT NO. 97887	
FED. ROAD DIST. NO.		ILLINOIS		



1  
22 TRENCH DRAIN DETAIL  
SCALE: NO SCALE



FILE NAME = 222157\_008 - SRTS BUMP-OUT DESIGN.DWG

**OATES ASSOCIATES**  
www.oatesassociates.com  
ILLINOIS DESIGN FIRM LICENSE NO.: 184.001115

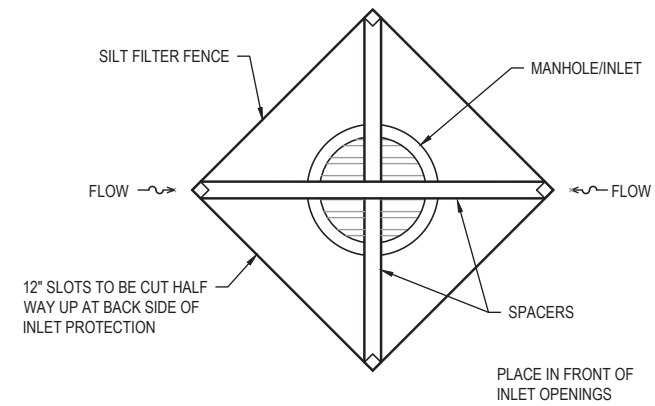
USER NAME =	CAMERON RAMIREZ	DESIGNED -	BRB	REVISED -	
PLOT SCALE =	1' = 1'	DRAWN -	CJR	REVISED -	
PLOT DATE =	2025-12-17	CHECKED -	TLC	REVISED -	
		DATE -	2025-12-17	REVISED -	

CITY OF MASCOUHAH

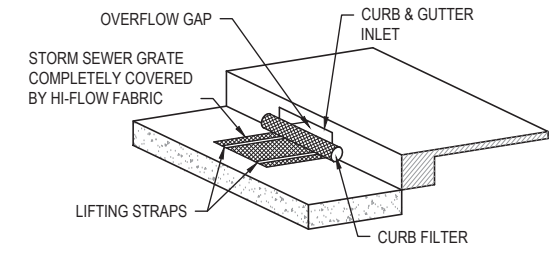
<b>DRAINAGE DETAILS</b>	
SCALE:	SHEET NO. 5 OF 5 SHEETS
STA. _____ TO STA. _____	

F.A.U. RTE.	SECTION	COUNTY	TOTAL SHEETS	SHEET NO.
9380	24-00031-00-SW	ST. CLAIR	24	22
SRTS MASCOUHAH BUMP-OUTS			CONTRACT NO. 97887	
FED. ROAD DIST. NO. _____			ILLINOIS	

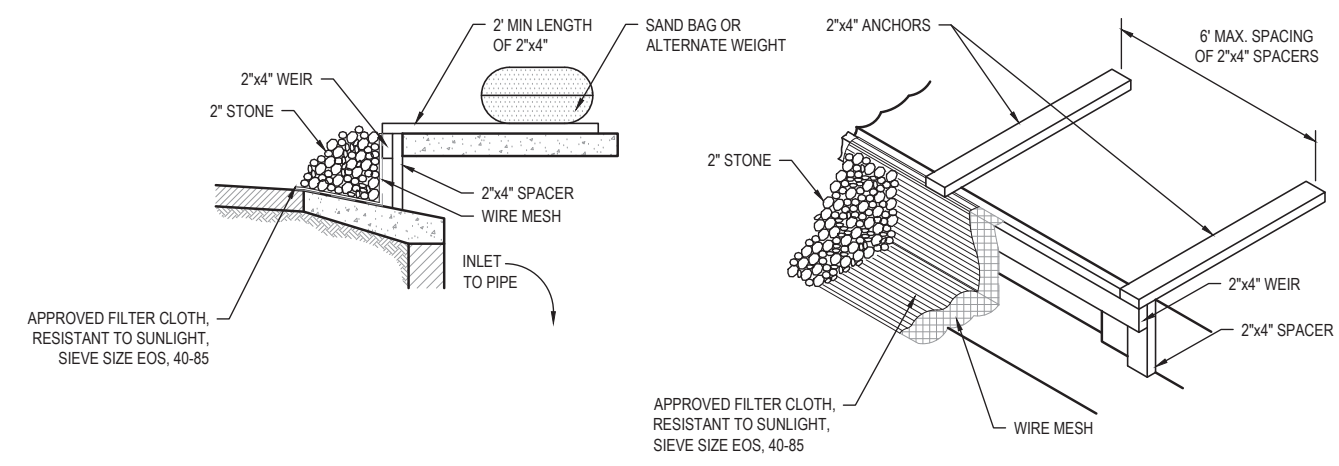




1  
24 INLET PROTECTION  
SCALE: NO SCALE



2  
24 CURB INLET PROTECTION  
SCALE: NO SCALE



3  
24 INLET PROTECTION DETAIL FOR OPEN THROAT  
SCALE: NO SCALE

FILE NAME = 222157.008 - SRTS BUMP-OUT DESIGN.DWG



USER NAME =	CAMERON RAMIREZ	DESIGNED -	BRB	REVISED -	
		DRAWN -	CJR	REVISED -	
PLOT SCALE =	1' = 1'	CHECKED -	TLC	REVISED -	
PLOT DATE =	2025-12-17	DATE -	2025-12-17	REVISED -	

CITY OF MASCOUTAH

**EROSION CONTROL DETAILS**

SCALE: SHEET NO. 2 OF 2 SHEETS STA. \_\_\_\_\_ TO STA. \_\_\_\_\_

F.A.U. RTE.	SECTION	COUNTY	TOTAL SHEETS	SHEET NO.
9380	24-00031-00-SW	ST. CLAIR	24	24
SRTS MASCOUTAH BUMP-OUTS			CONTRACT NO. 97887	
FED. ROAD DIST. NO. -			ILLINOIS	